

V&V Reference Report

L2 ASCDS Version : 8.4.4

Observation 9546 - L2 Version 2
Chandra X-Ray Center

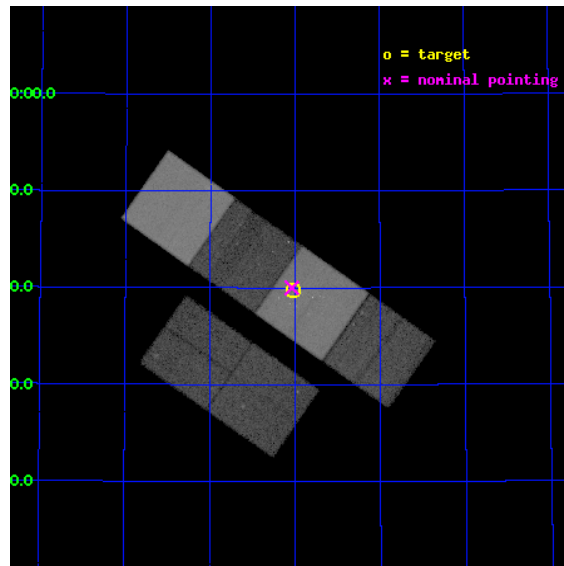
L2 Processing Date : May 5 2012

Contents

1	Front	2
2	OBI	3
2.1	OBI	3
2.1.1	Images	3
2.1.2	Bias	3
2.1.3	Parameters	4
2.1.4	Events	4
2.2	Compared Parameters	5
2.3	Aspect	6
2.4	Star Slots	9
2.4.1	Slot 3	9
2.4.2	Slot 4	10
2.4.3	Slot 5	11
2.4.4	Slot 6	12
2.4.5	Slot 7	13
2.5	FID Slots	14
2.5.1	Slot 0	14
2.5.2	Slot 1	15
2.5.3	Slot 2	16
A	Summary	17
A.1	Status	17
A.2	Comments	17

1 Front

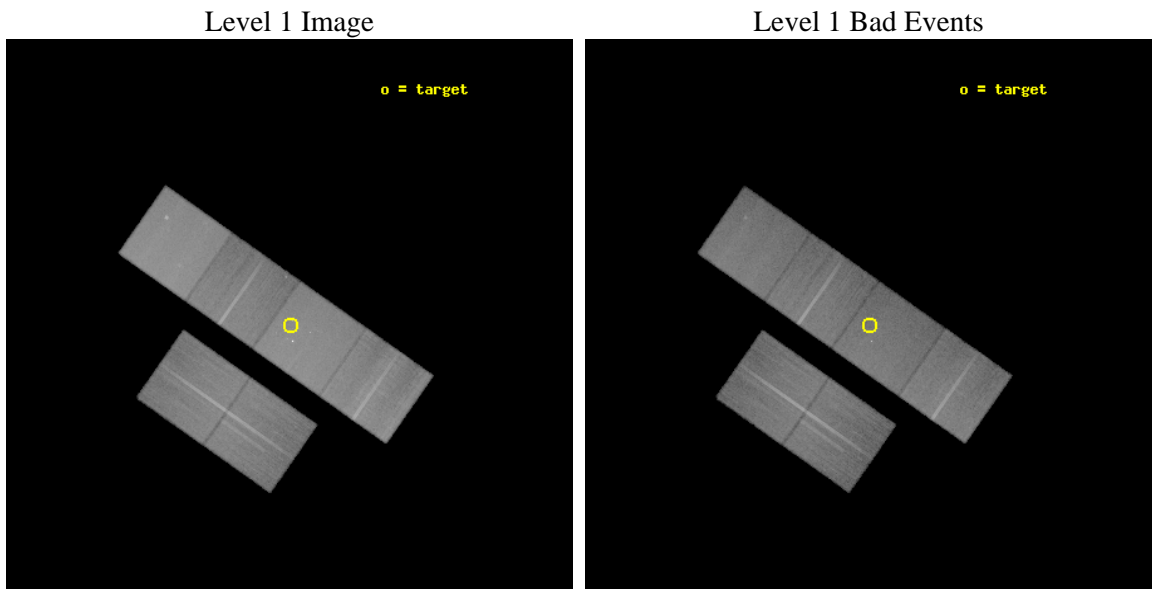
seq_num	600687	Sequence number
obs_id	9546	Observation id
title	Galaxies across the Octaves: A Chandra Legacy Survey of SINGS Galaxies	Proposal title
observer	Dr Leigh Jenkins	Principal investigator
object	NGC 5474	Source name
dtycycle	0	
cycle	P	events from which exps? Prim/Second/Both
ra_targ	211.25625	Observer's specified target RA [deg]
dec_targ	53.662389	Observer's specified target Dec [deg]
ra_nom	211.2594862653	Nominal RA [deg]
dec_nom	53.666821275577	Nominal Dec [deg]
roll_nom	35.048309481507	Nominal Roll [deg]
revision	2	Processing version of data
ontime	30169.599887669	Sum of GTIs [s]
livetime	29787.574247939	Livetime [s]
ontime2	30169.599887669	Sum of GTIs [s]
ontime3	30169.599887669	Sum of GTIs [s]
ontime5	30169.599887669	Sum of GTIs [s]
ontime6	30169.599887669	Sum of GTIs [s]
ontime7	30169.599887669	Sum of GTIs [s]
ontime8	30169.599887669	Sum of GTIs [s]
l2events	504242	Number of level 2 events



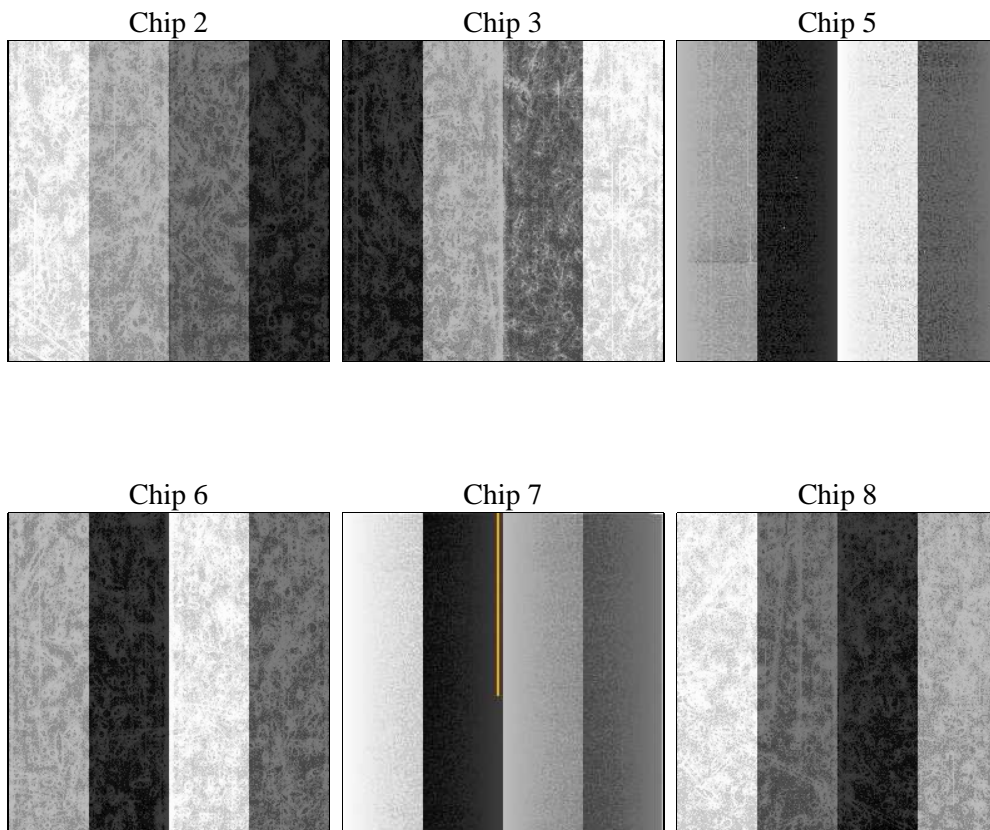
2 OBI

2.1 OBI

2.1.1 Images



2.1.2 Bias



2.1.3 Parameters

obi_num	0	Obi number	sched_exp_time	30000.000000	[s] Scheduled observation exposure time
ascdsver	8.4.4	Processing system revision	ontime	30169.599887669	Sum of GTIs [s]
caldbver	4.4.9	 	ontime2	30169.599887669	Sum of GTIs [s]
date	2012-05-05T21:44:18	Date and time of file creation	ontime3	30169.599887669	Sum of GTIs [s]
revision	2	Processing version of data	ontime5	30169.599887669	Sum of GTIs [s]
			ontime6	30169.599887669	Sum of GTIs [s]
			ontime7	30169.599887669	Sum of GTIs [s]
			ontime8	30169.599887669	Sum of GTIs [s]
			l1events	2137525	Number of level 1 events

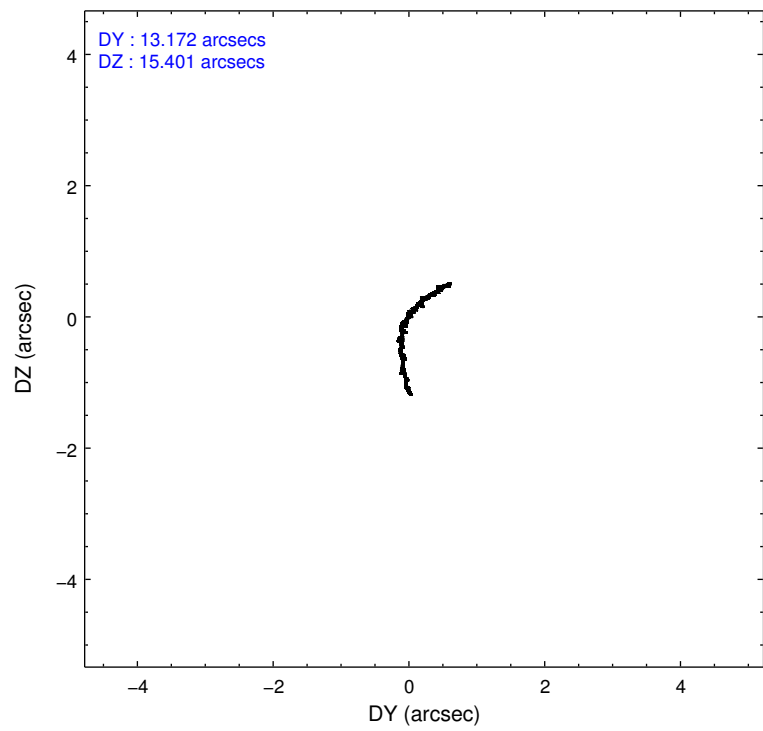
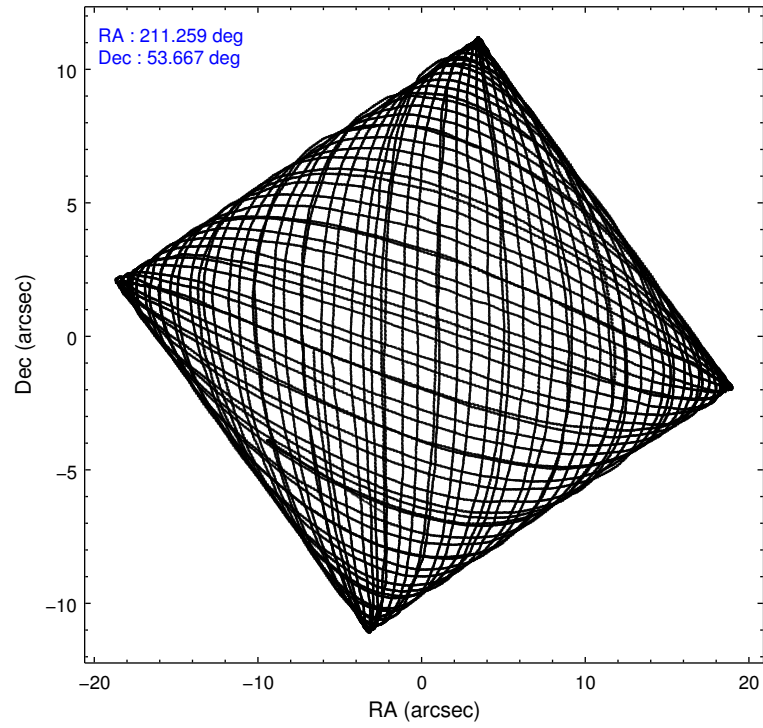
2.1.4 Events

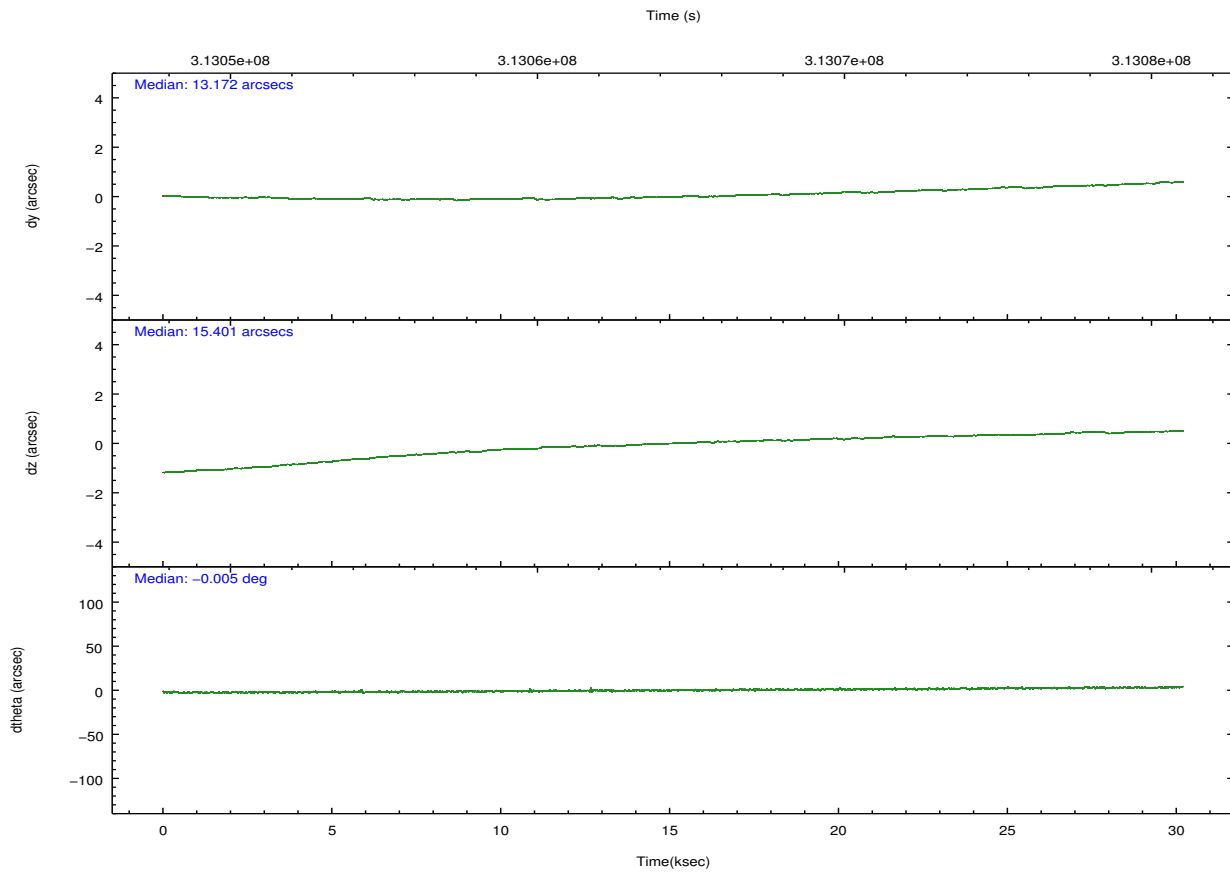
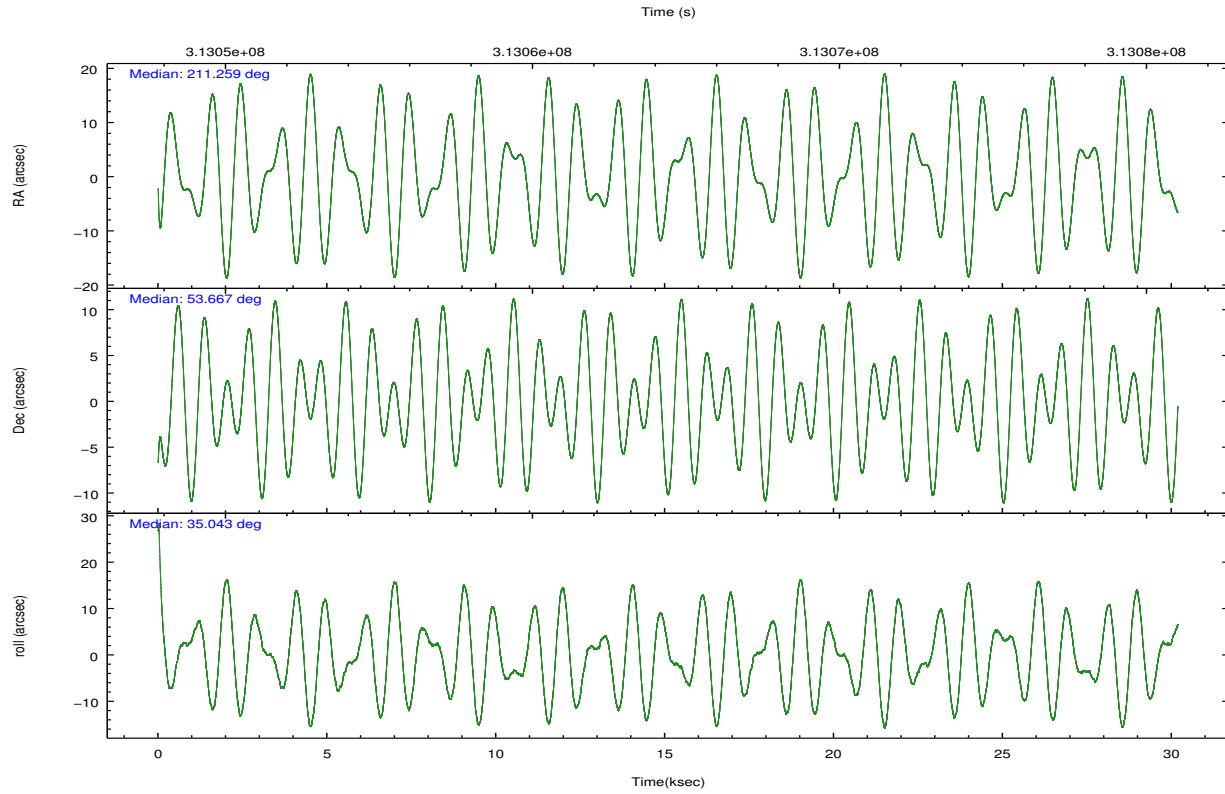
	ccd 2	ccd 3	ccd 5	ccd 6	ccd 7	ccd 8		ccd 2	ccd 3	ccd 5	ccd 6	ccd 7	ccd 8
level 1 events	300598	286139	451964	300138	417830	380856	grade 0 events	15752	15149	13869	13785	16855	27758
rejected events	264335	251498	246196	264519	238721	292726		5%	5%	3%	4%	4%	7%
rejected %	87%	87%	54%	88%	57%	76%	grade 1 events	235	195	987	167	519	314
								0%	0%	0%	0%	0%	0%
							grade 2 events	7680	6773	63881	7918	37063	20058
								2%	2%	14%	2%	8%	5%
							grade 3 events	3372	3312	7959	3285	15477	9119
								1%	1%	1%	1%	3%	2%
							grade 4 events	3376	3218	7566	3374	15418	8516
								1%	1%	1%	1%	3%	2%
							grade 5 events	12126	13436	32633	14201	39215	18776
								4%	4%	7%	4%	9%	4%
							grade 6 events	6088	6194	112524	7264	94315	22710
								2%	2%	24%	2%	22%	5%
							grade 7 events	251969	237862	212545	250144	198968	273605
								83%	83%	47%	83%	47%	71%

2.2 Compared Parameters

Parameter	Planned	Actual	Parameter	Planned	Actual
Instrument	ACIS	ACIS	Obspar format version number	7	7
Detector	ACIS-235678	ACIS-235678	Obspar file type	PREDICTED	ACTUAL
Grating	NONE	NONE	Obspar update status	NONE	UPDATED
Data mode	FAINT	FAINT	CCD I0 on	N	N
Observation mode	POINTING	POINTING	CCD I1 on	N	N
[deg] Pointing RA	211.240608	211.2594862652977	CCD I2 on	O1	Y
[deg] Pointing Dec	53.641887	53.66682127557687	CCD I3 on	O2	Y
[deg] Pointing Roll	34.906879	35.04830948150683	CCD S0 on	N	N
[mm] SIM focus pos	-0.684267	-0.6828225247311905	CCD S1 on	Y	Y
[mm] SIM defocus	0	0.001444936568705701	CCD S2 on	Y	Y
[mm] SIM translation stage pos	-190.132523	-190.1400660498719	CCD S3 on	Y	Y
[mm] SIM translation stage offset	0	0.00754346686406393	CCD S4 on	Y	Y
[s] Observation start time (MET)	313049509.184000	313048439.33273	CCD S5 on	N	N
Observation start date	2007-12-03T06:10:44	2007-12-03T05:53:59	Number of optional ACIS chips dropped	0	0
[s] Observation end time (MET)	313079509.184000	313080277.88427	On-chip summing requested	N	N
Observation end date	2007-12-03T14:30:44	2007-12-03T14:44:37	Subarray requested	NONE	NONE
Read mode	TIMED	TIMED	Alternating exposures requested	N	N
			[s] Primary exposure time	0.000000	3.2

2.3 Aspect



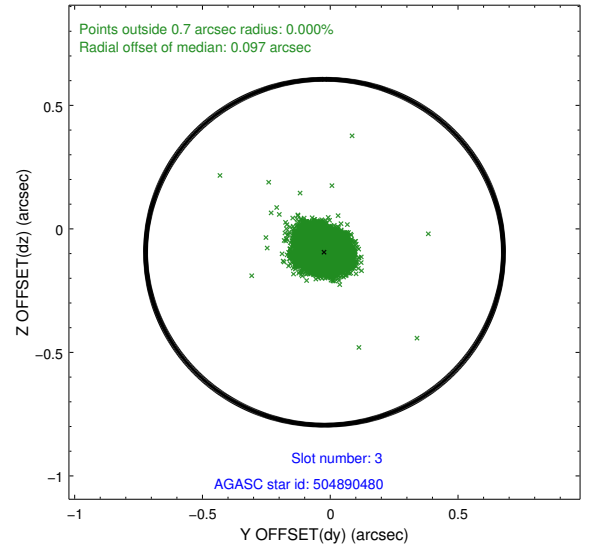
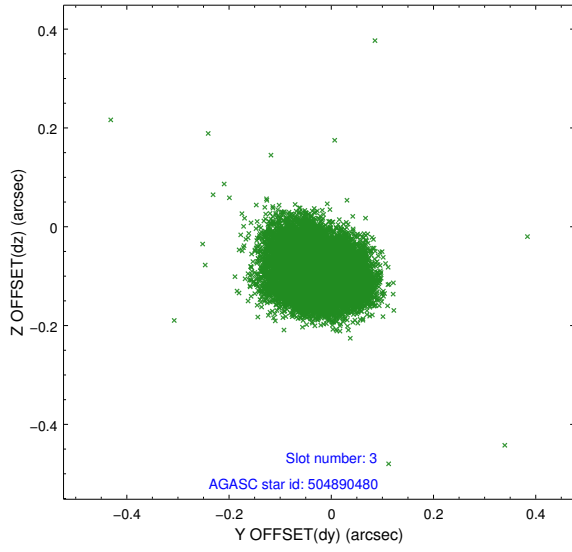


Slot Statistics

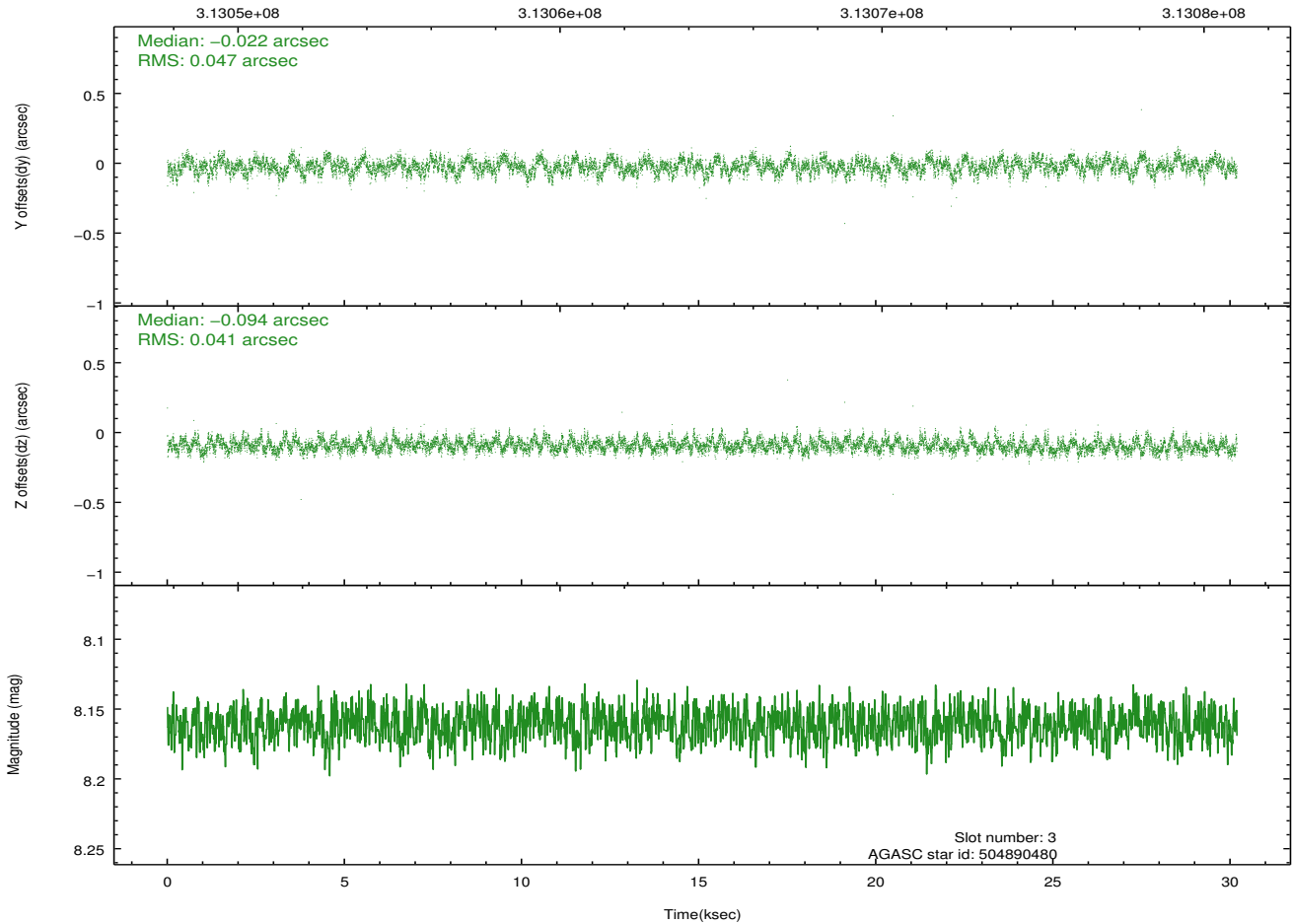
slot	status	id	mag	n_pts	med_dy	med_dz	dr1	dr2	ra	dec	mean_y	mean_z
0	FID	ACIS-S-1	7.19	7363	0.088	-0.058	0.019	0.055	0.000000	0.000000	929.92	-1732.35
1	FID	ACIS-S-2	7.09	7364	-0.096	-0.013	0.013	0.021	0.000000	0.000000	-766.13	-1736.92
2	FID	ACIS-S-6	7.32	7362	-0.014	0.069	0.016	0.037	0.000000	0.000000	395.47	809.04
3	GUIDE	504890480	8.16	14727	-0.022	-0.094	0.066	0.107	210.132463	53.768436	-1663.33	1737.72
4	GUIDE	504890688	9.16	14712	0.018	-0.050	0.113	0.172	211.697686	53.837149	1200.64	23.13
5	GUIDE	504894408	9.27	14704	-0.060	-0.021	0.099	0.160	211.942794	54.047749	2057.68	355.45
6	GUIDE	504894936	7.02	14727	-0.070	0.176	0.055	0.088	211.671952	53.312308	84.26	-1500.93
7	GUIDE	504898912	9.76	14573	0.137	-0.017	0.102	0.170	210.501433	53.478547	-1630.22	430.98

2.4 Star Slots

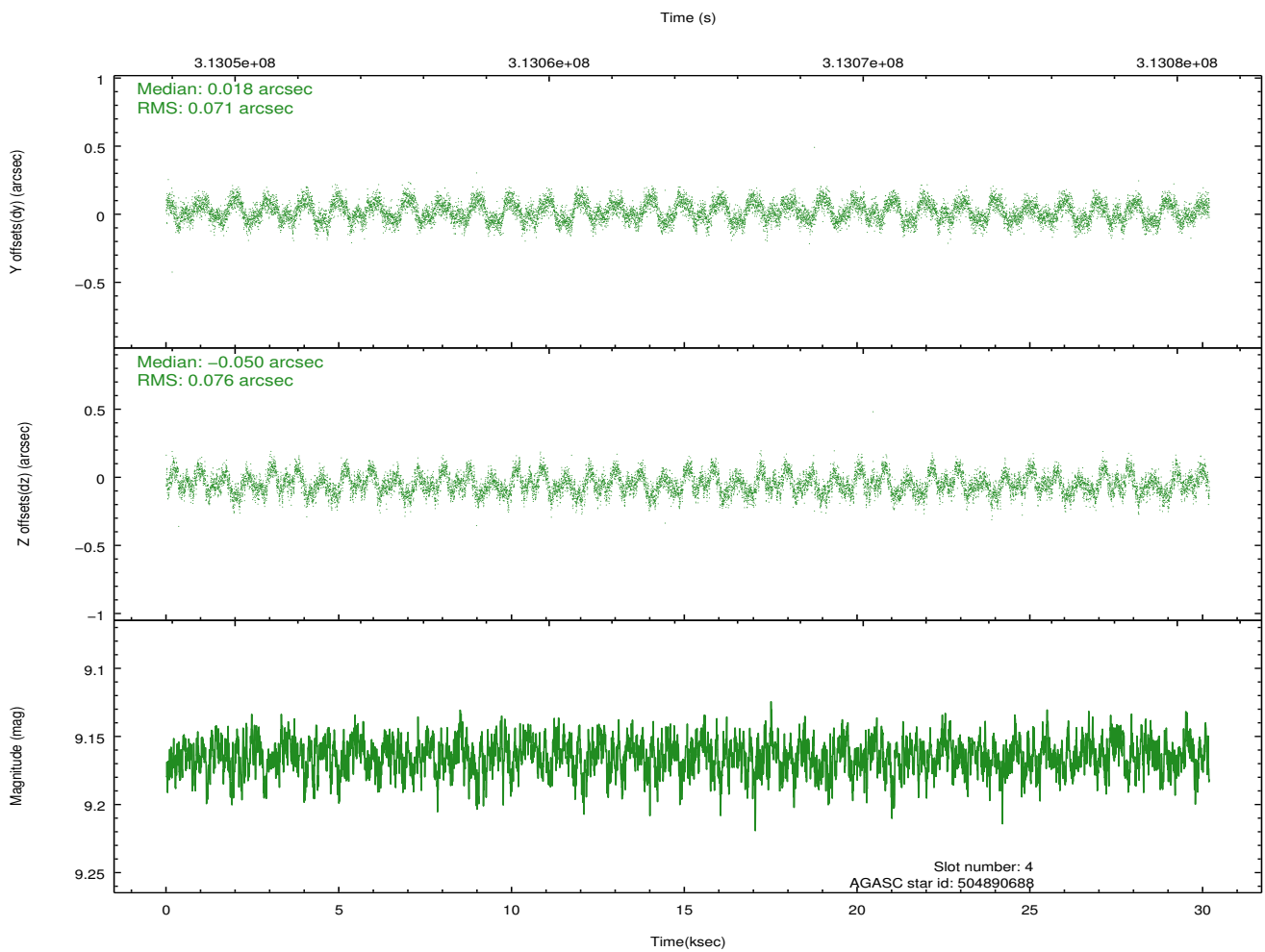
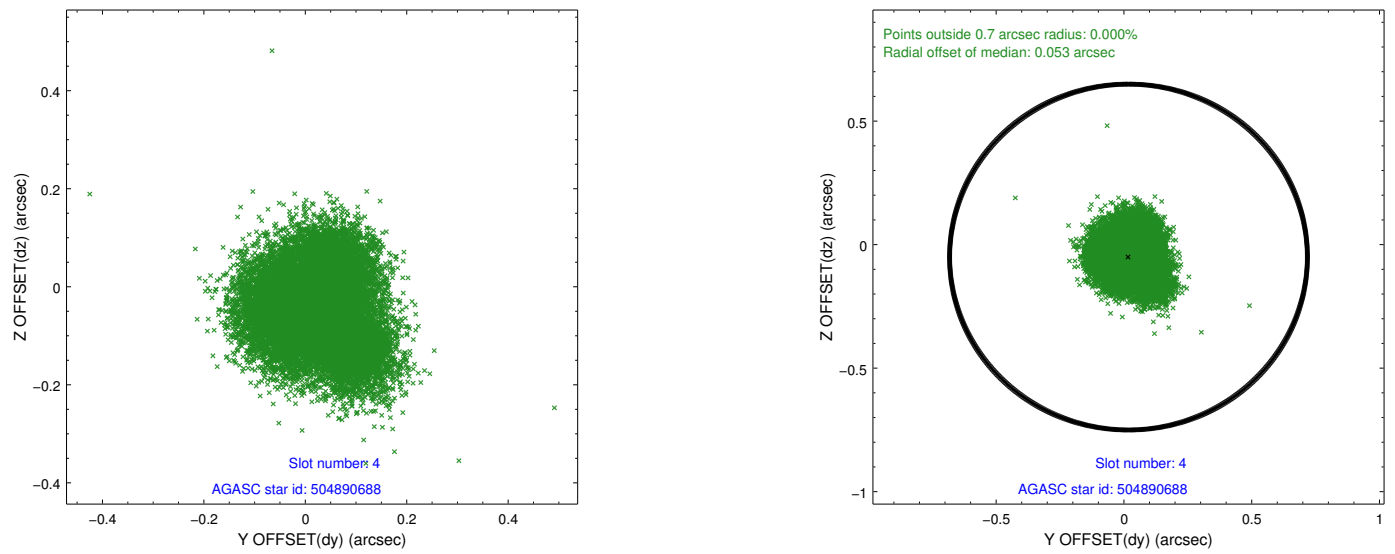
2.4.1 Slot 3



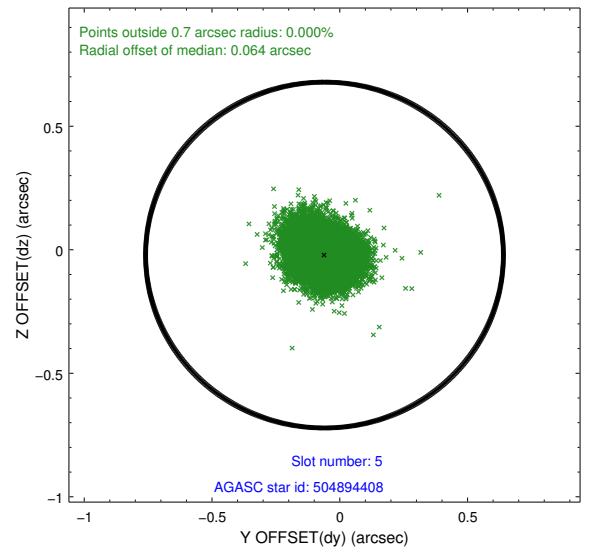
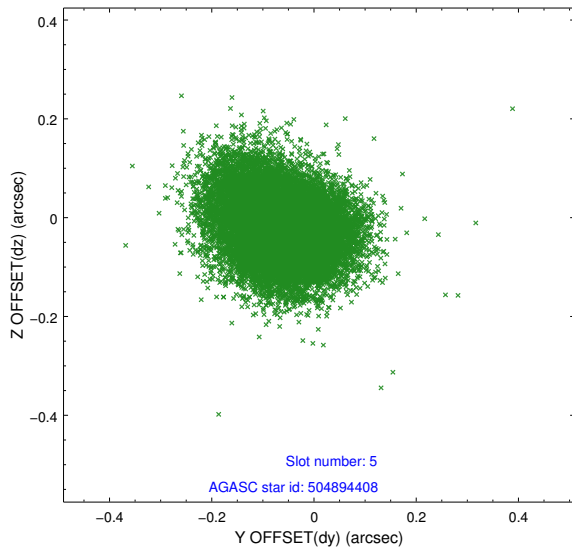
Time (s)



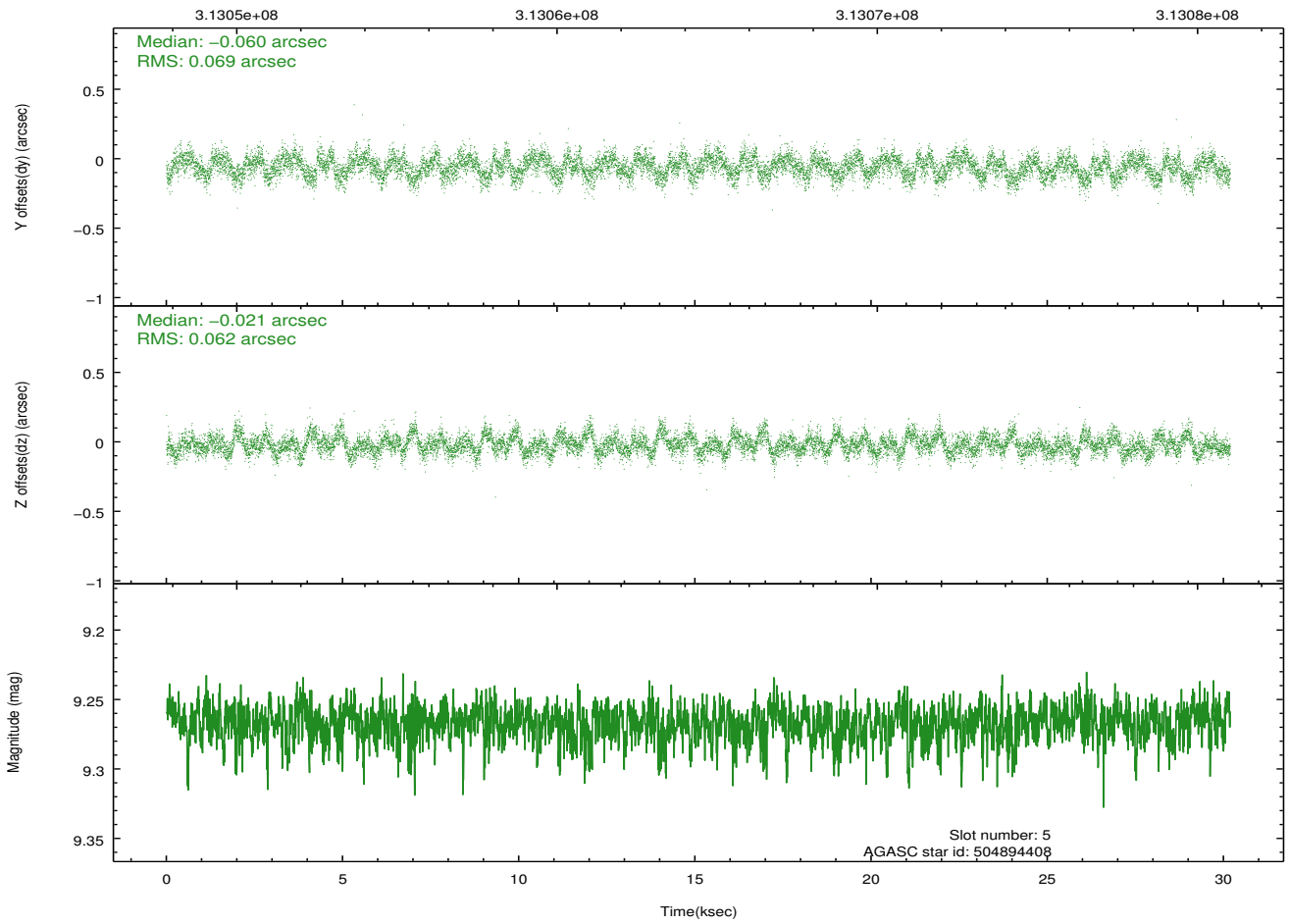
2.4.2 Slot 4



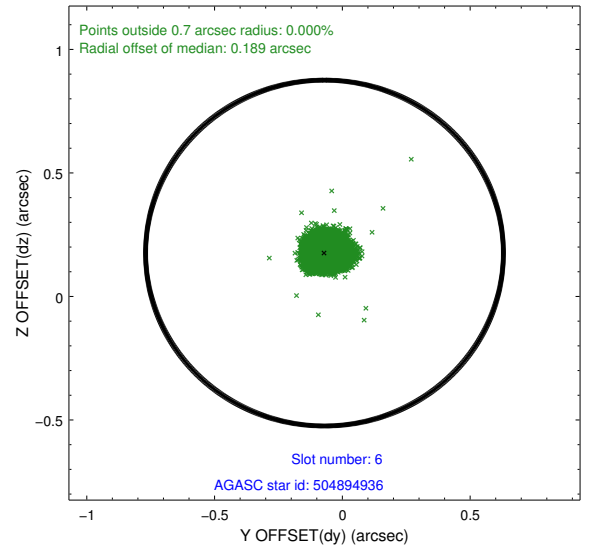
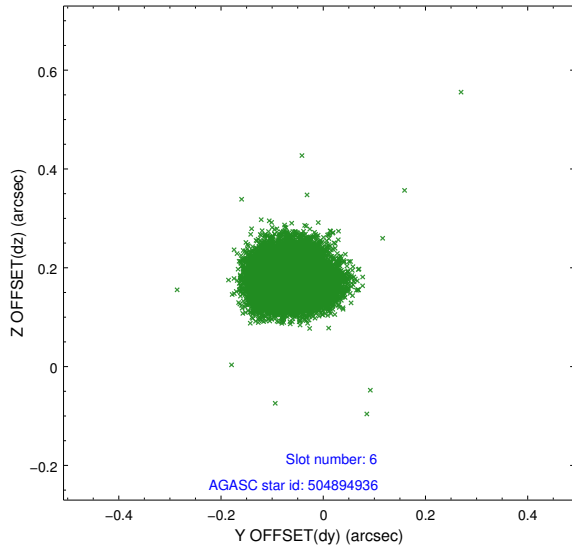
2.4.3 Slot 5



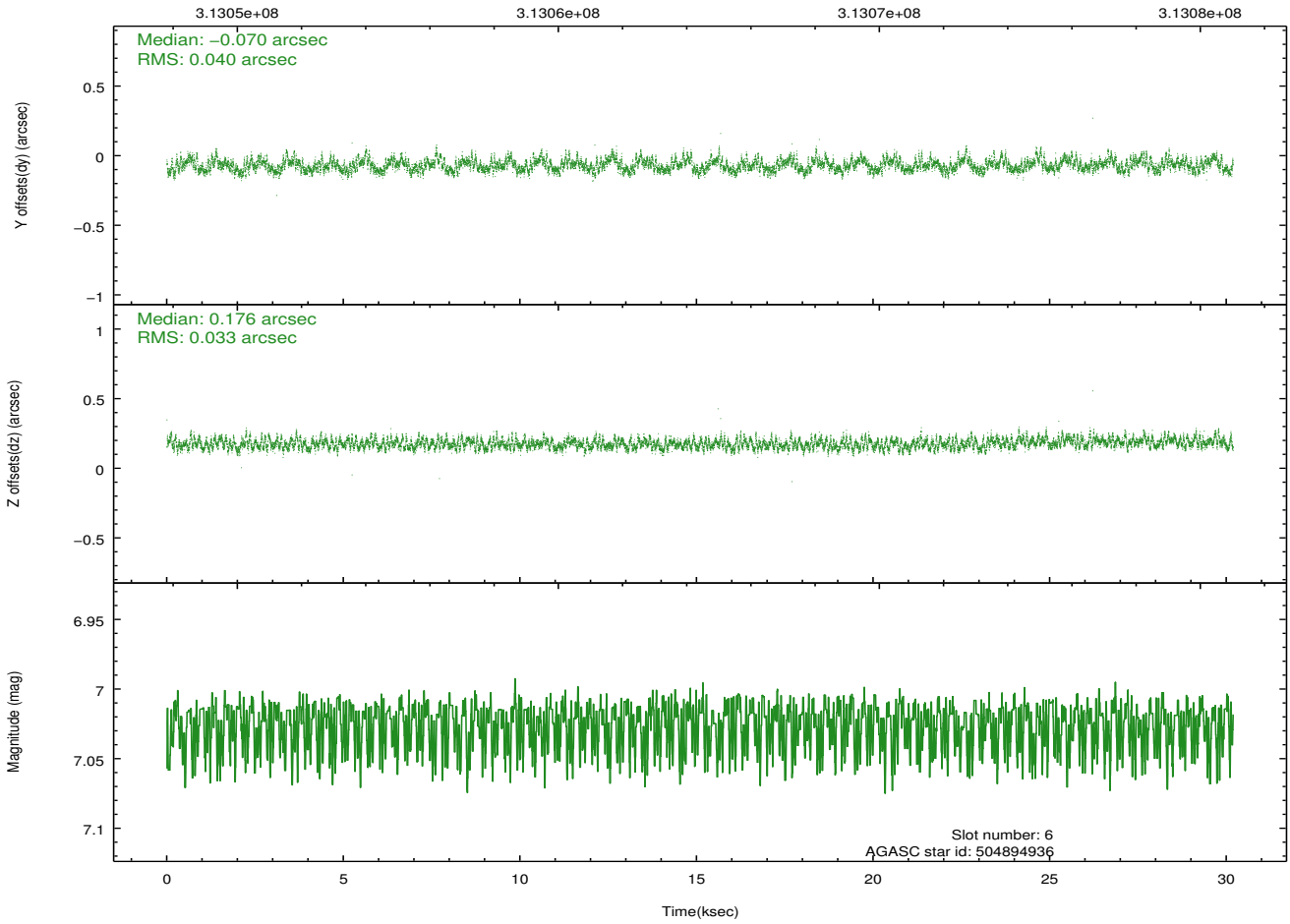
Time (s)



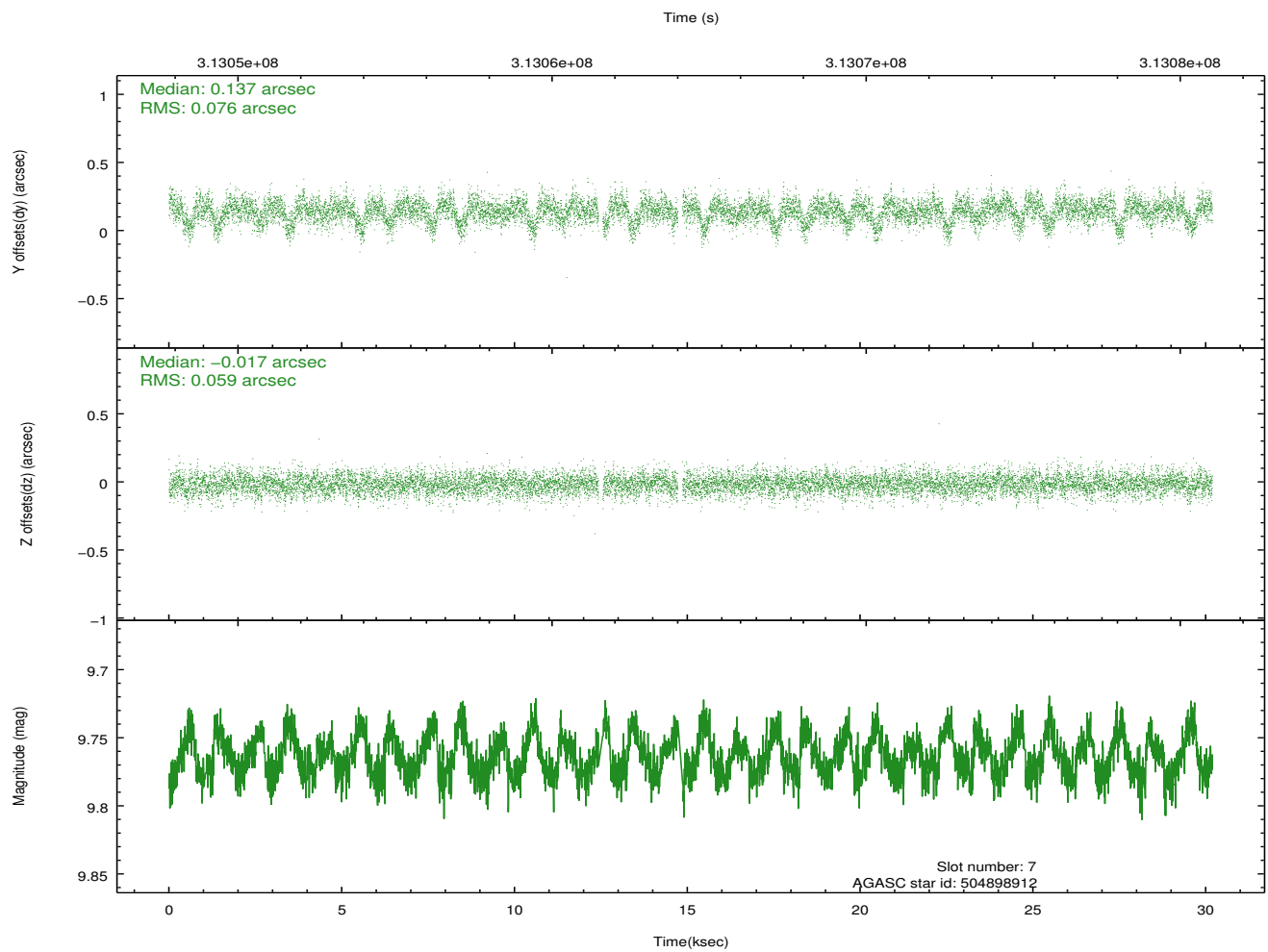
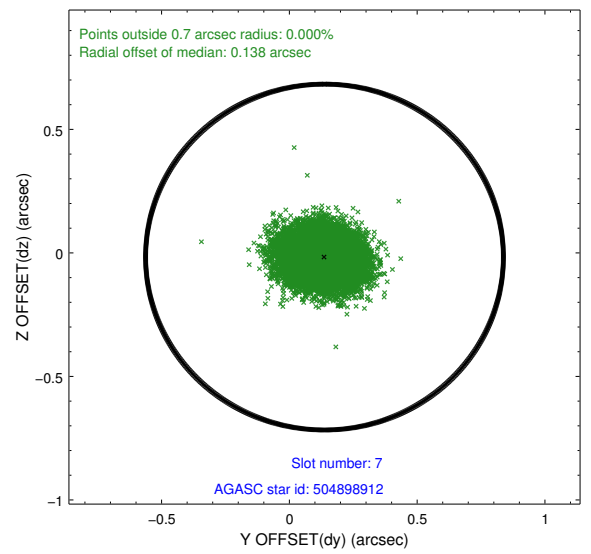
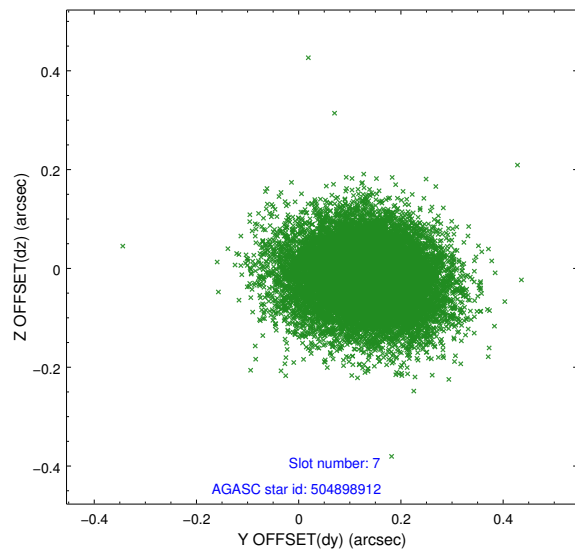
2.4.4 Slot 6



Time (s)

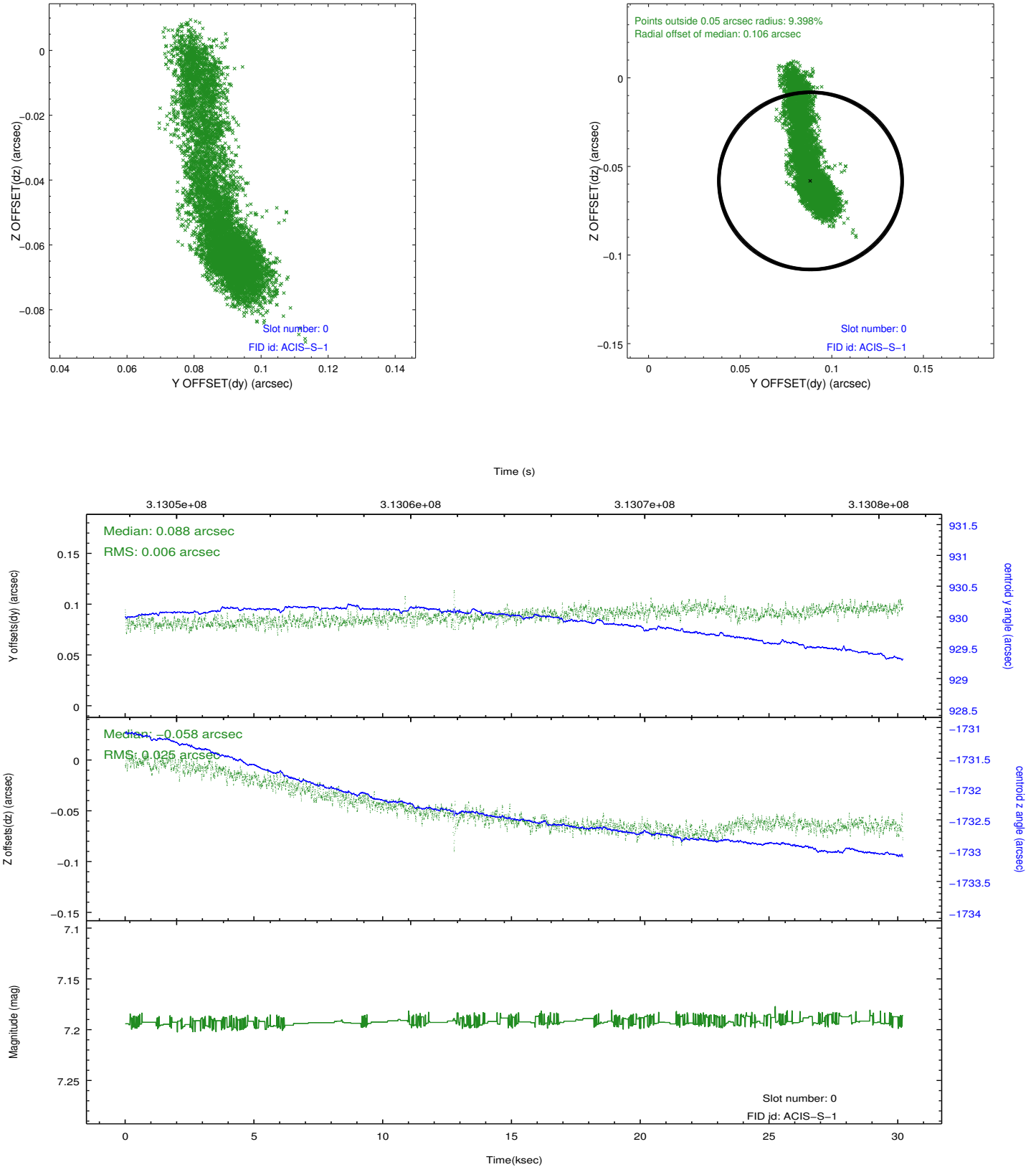


2.4.5 Slot 7

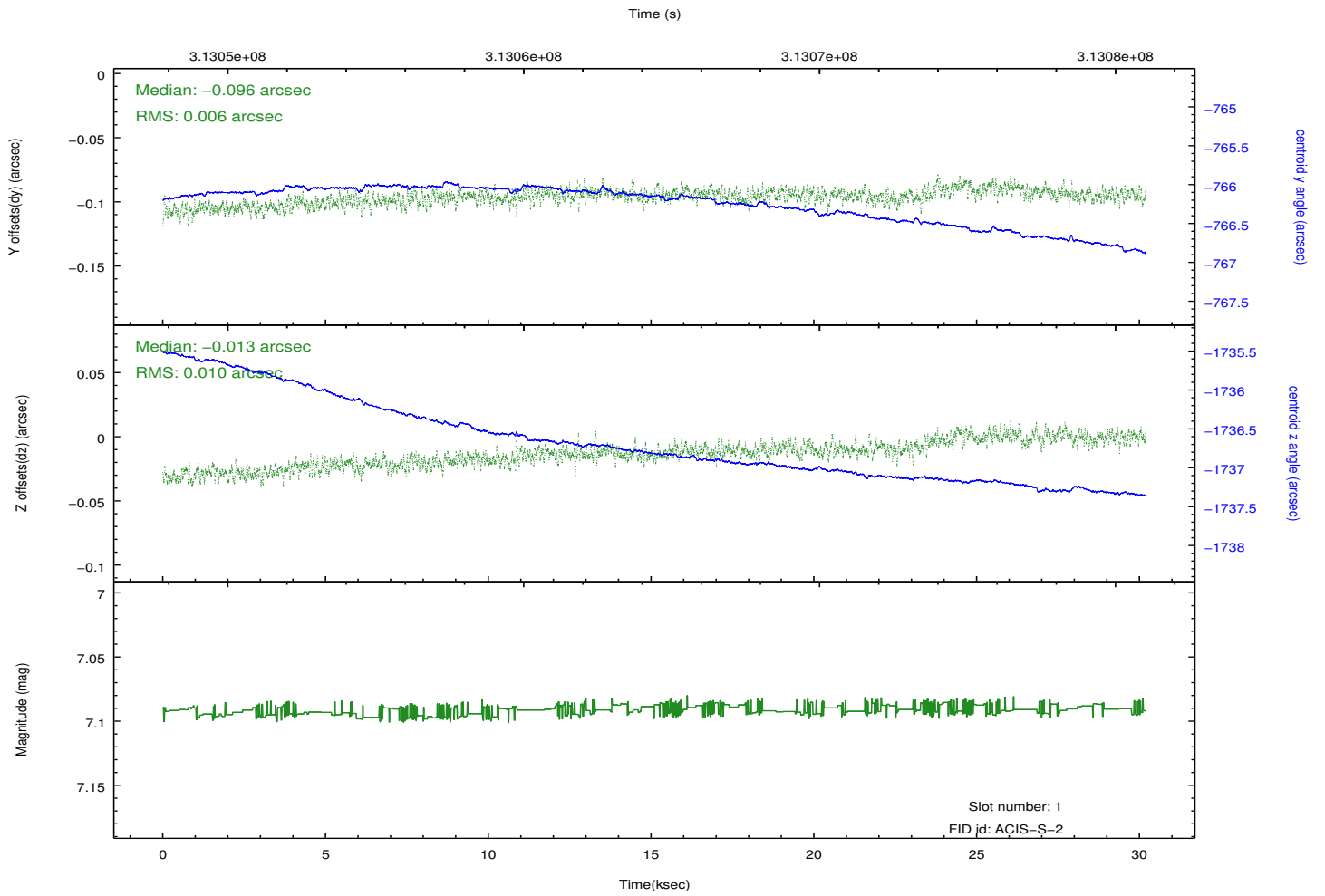
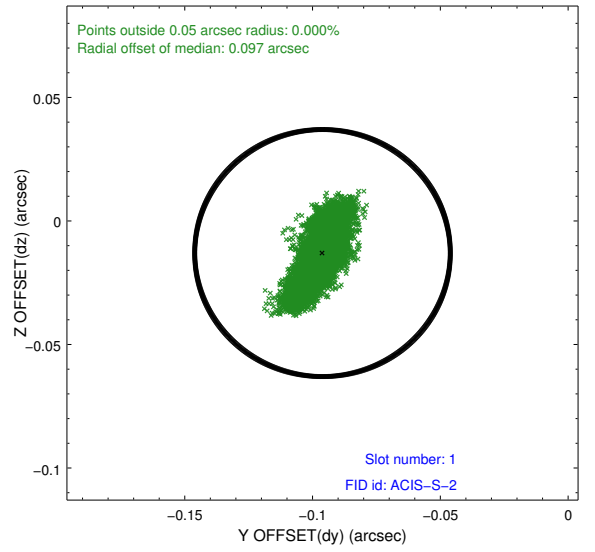
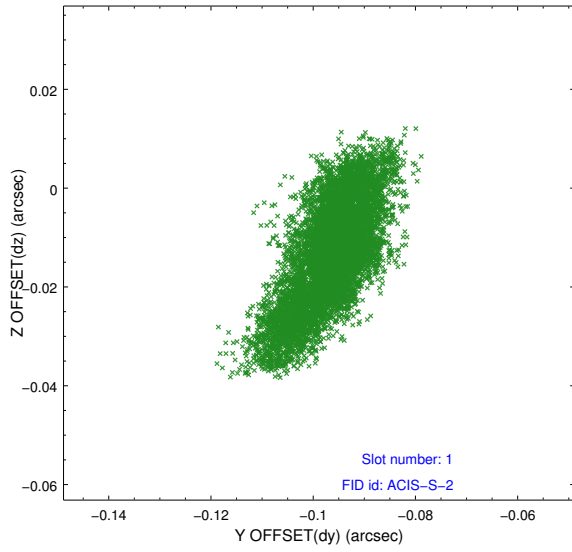


2.5 FID Slots

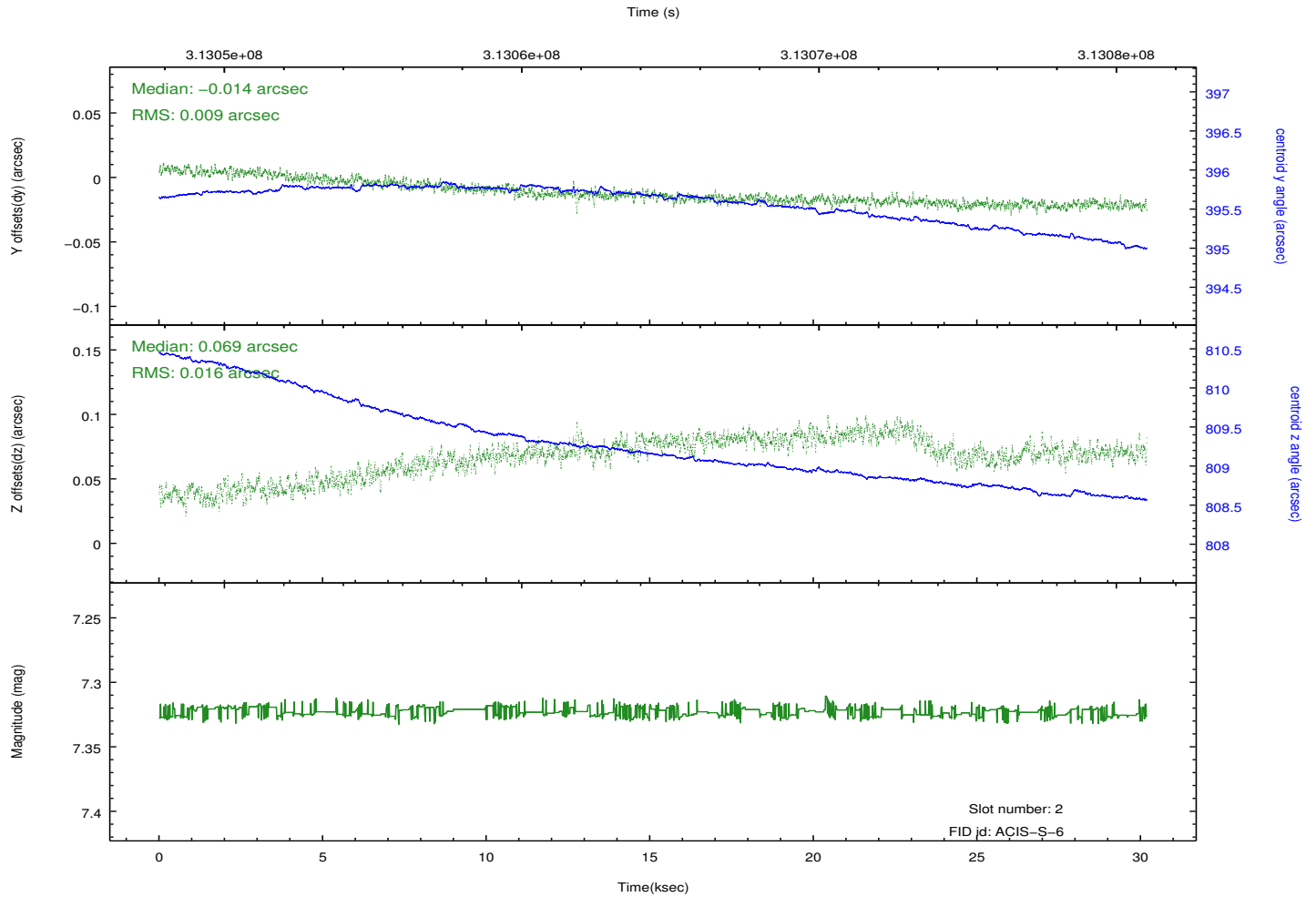
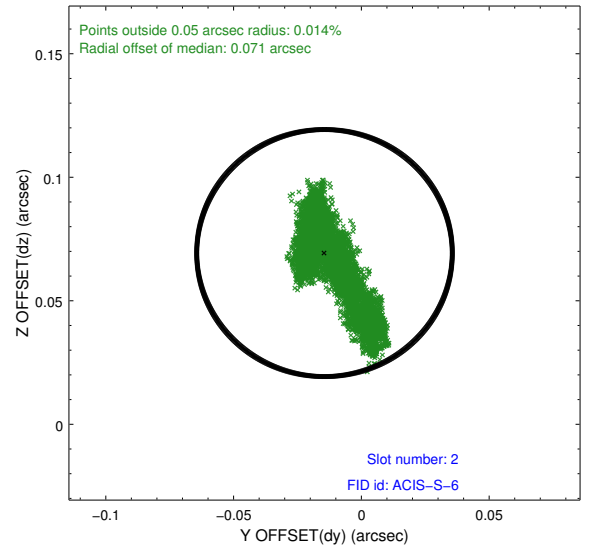
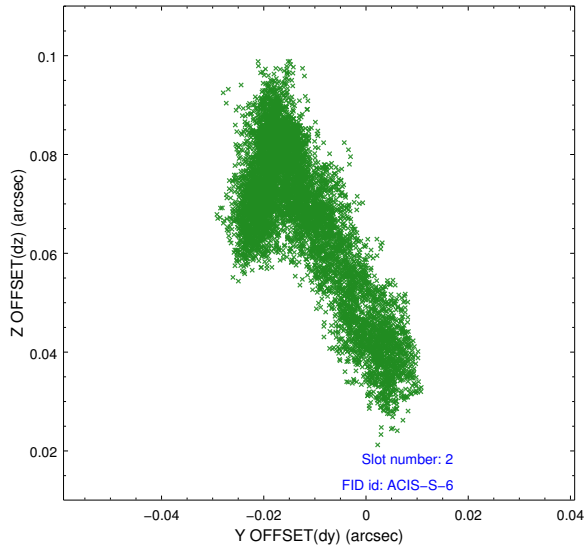
2.5.1 Slot 0



2.5.2 Slot 1



2.5.3 Slot 2



A Summary

A.1 Status

V&V Scientist	Jen Lauer
V&V Date (YYYY-MM-DD)	2012.05.08
V&V Edition	1
V&V Disposition and Status	OK
V&V Charge Time	30.1695998

A.2 Comments