

V&V Reference Report

L2 ASCDS Version : 8.4.5

Observation 956 - L2 Version 4
Chandra X-Ray Center

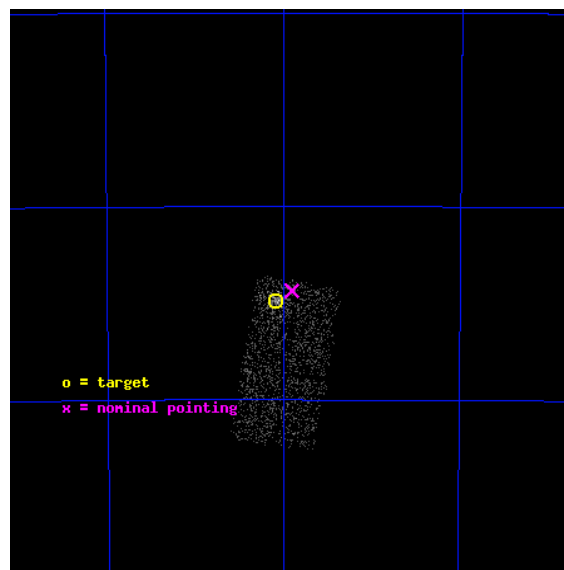
L2 Processing Date : Aug 24 2012

Contents

1	Front	2
2	OBI	3
2.1	OBI	3
2.1.1	Images	3
2.1.2	Bias	3
2.1.3	Parameters	4
2.1.4	Events	4
2.2	Compared Parameters	5
2.3	Aspect	6
2.4	Star Slots	9
2.4.1	Slot 3	9
2.4.2	Slot 4	10
2.4.3	Slot 5	11
2.4.4	Slot 6	12
2.4.5	Slot 7	13
2.5	FID Slots	14
2.5.1	Slot 0	14
2.5.2	Slot 1	15
2.5.3	Slot 2	16
A	Summary	17
A.1	Status	17
A.2	Comments	17

1 Front

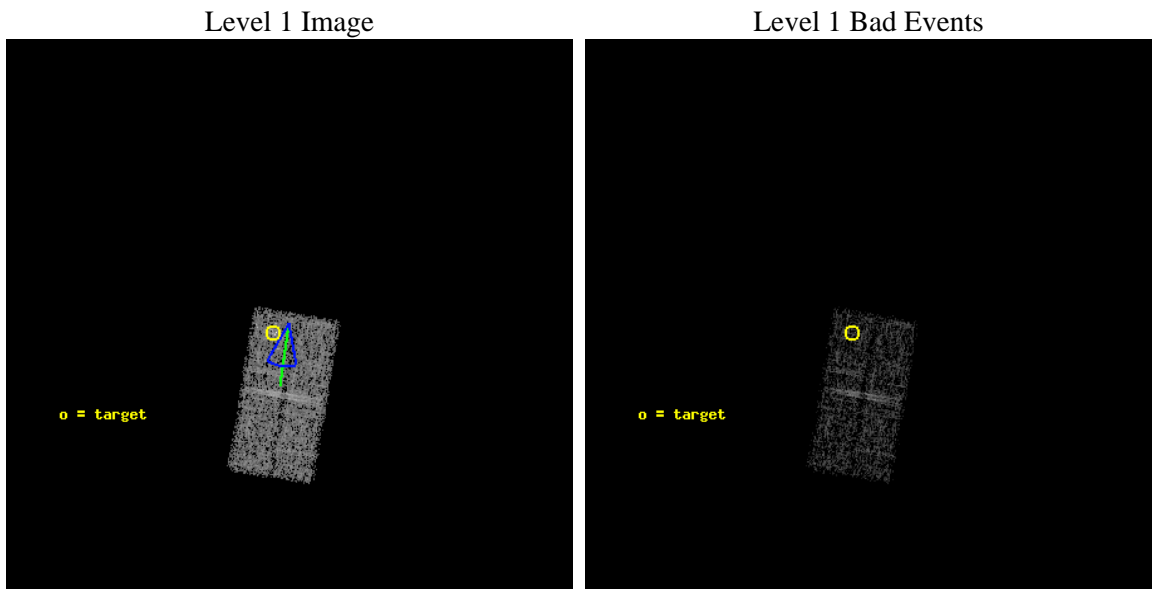
seq_num	300031	Sequence number
obs_id	956	Observation id
title	DIFFUSE X-RAY EMISSION IN GLOBULARS: HOT GAS VS. NON-THERMAL EMISSION IN 47 TUC	Proposal title
observer	Dr. Stephen Murray	Principal investigator
object	47 TUC	Source name
dtcycle	0	
cycle	P	events from which exps? Prim/Second/Both
ra_targ	6.0243	Observer's specified target RA [deg]
dec_targ	-72.0809	Observer's specified target Dec [deg]
ra_nom	5.9770041206993	Nominal RA [deg]
dec_nom	-72.072823541653	Nominal Dec [deg]
roll_nom	189.54548568155	Nominal Roll [deg]
revision	4	Processing version of data
ontime	4905.0000324845	Sum of GTIs [s]
livetime	4691.0864886042	Livetime [s]
ontime2	4905.0000324845	Sum of GTIs [s]
ontime3	4905.0000324845	Sum of GTIs [s]
l2events	3344	Number of level 2 events



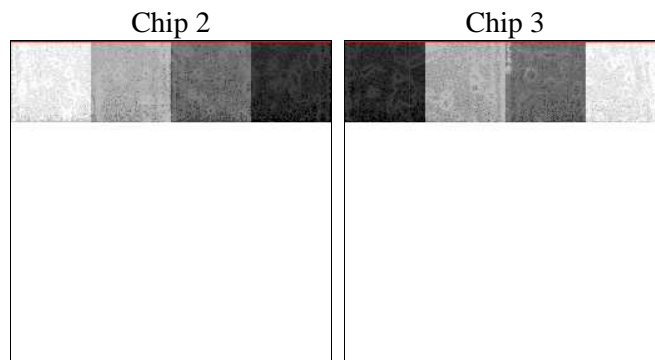
2 OBI

2.1 OBI

2.1.1 Images



2.1.2 Bias



2.1.3 Parameters

obi_num	0	Obi number	sched_exp_time	5000.000000	[s] Scheduled observation exposure time
ascdsver	8.4.5	Processing system revision	ontime	4905.0000324845	Sum of GTIs [s]
caldbver	4.5.1.1	 	ontime2	4905.0000324845	Sum of GTIs [s]
date	2012-08-24T13:39:49	Date and time of file creation	ontime3	4905.0000324845	Sum of GTIs [s]
revision	4	Processing version of data	l1events	26452	Number of level 1 events

2.1.4 Events

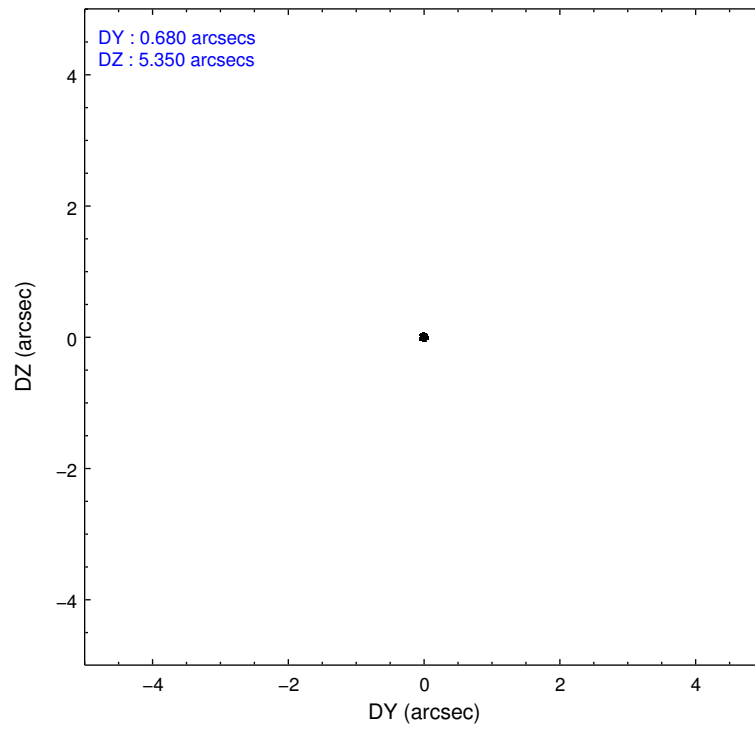
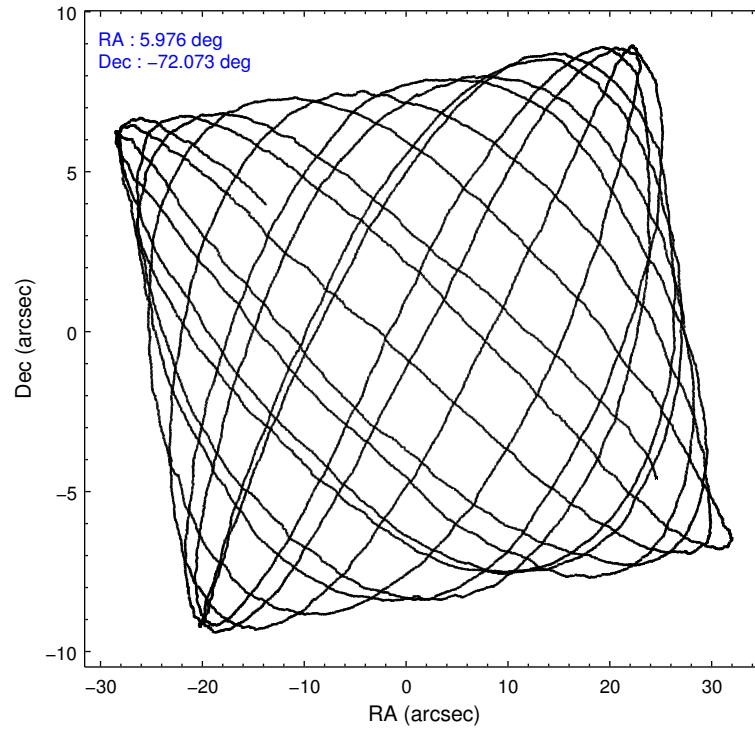
	ccd 2	ccd 3
level 1 events	12602	13850
rejected events	11426	11151
rejected %	90%	80%

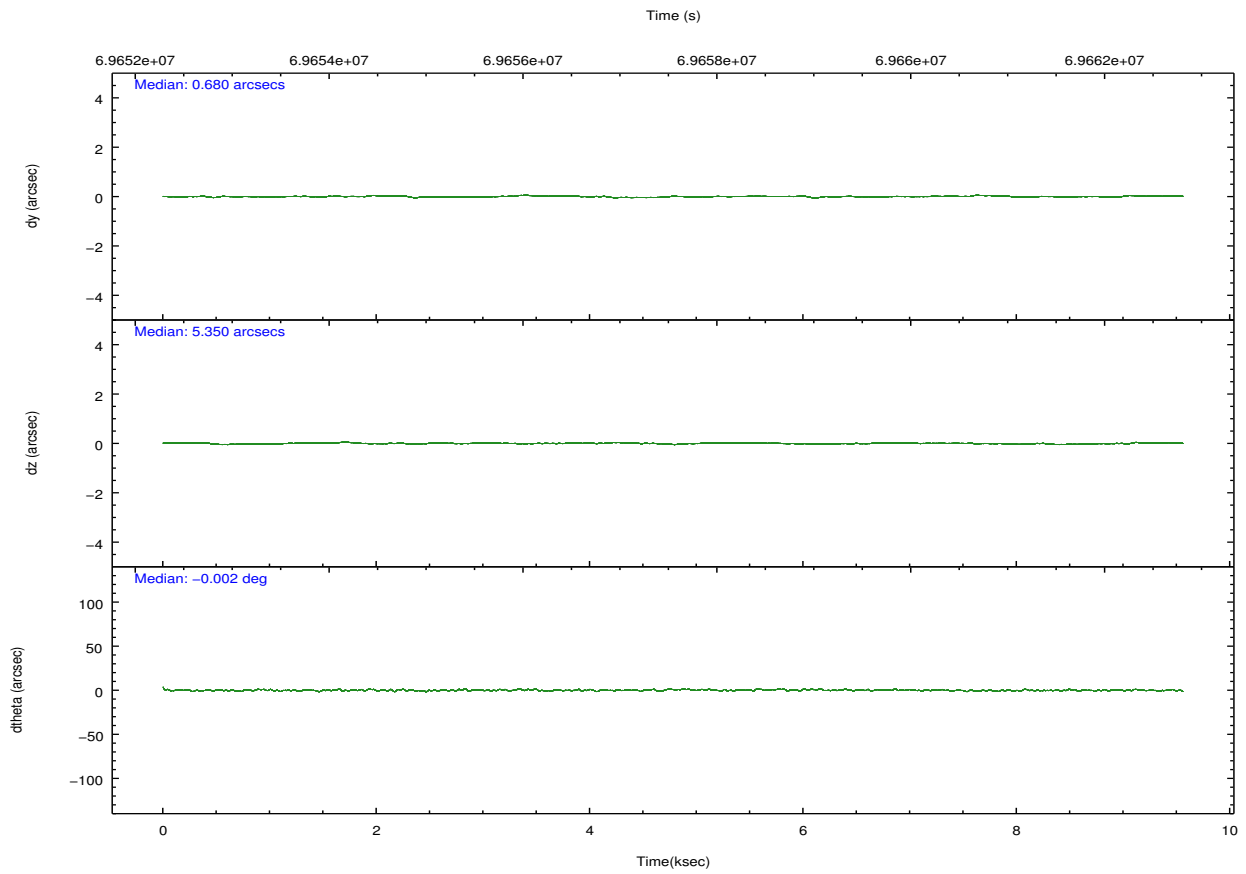
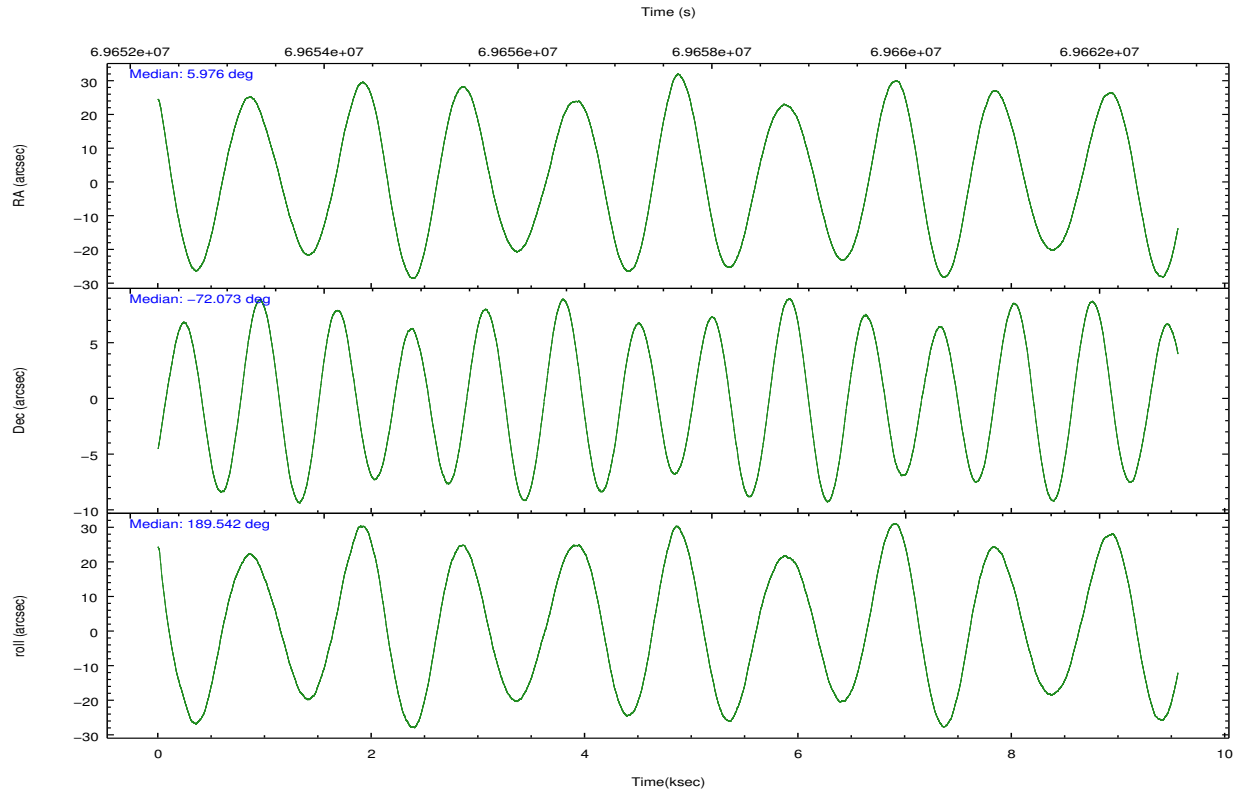
	ccd 2	ccd 3
grade 0 events	418	1719
	3%	12%
grade 1 events	4	19
	0%	0%
grade 2 events	220	288
	1%	2%
grade 3 events	177	245
	1%	1%
grade 4 events	191	222
	1%	1%
grade 5 events	247	307
	1%	2%
grade 6 events	170	225
	1%	1%
grade 7 events	11175	10825
	88%	78%

2.2 Compared Parameters

Parameter	Planned	Actual	Parameter	Planned	Actual
Instrument	ACIS	ACIS	Obspar format version number	7	7
Detector	ACIS-23	ACIS-23	Obspar file type	PREDICTED	ACTUAL
Grating	NONE	NONE	Obspar update status	NONE	UPDATED
Data mode	FAINT	FAINT	Number of optional ACIS chips dropped	0	0
Observation mode	POINTING	POINTING	On-chip summing requested	N	N
[deg] Pointing RA	6.046811	5.977004120699291	Subarray requested	CUSTOM	1/4
[deg] Pointing Dec	-72.055421	-72.07282354165312	Subarray start row	768	768
[deg] Pointing Roll	189.403221	189.5454856815541	Subarray row count	256	256
[deg] Roll angle	190.000000	190.000000	Alternating exposures requested	N	N
[deg] Roll tolerance	20.000000	20.000000	[s] Primary exposure time	0.000000	0.9
Roll constraint allows 180D rotation	N	N			
[mm] SIM focus pos	-0.782348	-0.7809083437167272			
[mm] SIM defocus	0	0.001439871863259334			
[mm] SIM translation stage pos	-233.592463	-233.5874344608287			
[mm] SIM translation stage offset	0	-0.005018542100998502			
[s] Observation start time (MET)	69653250.184000	69652583.79144099			
Observation start date	2000-03-17T04:06:26	2000-03-17T03:56:23			
[s] Observation end time (MET)	69658250.184000	69663087.479325			
Observation end date	2000-03-17T05:29:46	2000-03-17T06:51:27			
Read mode	TIMED	TIMED			

2.3 Aspect



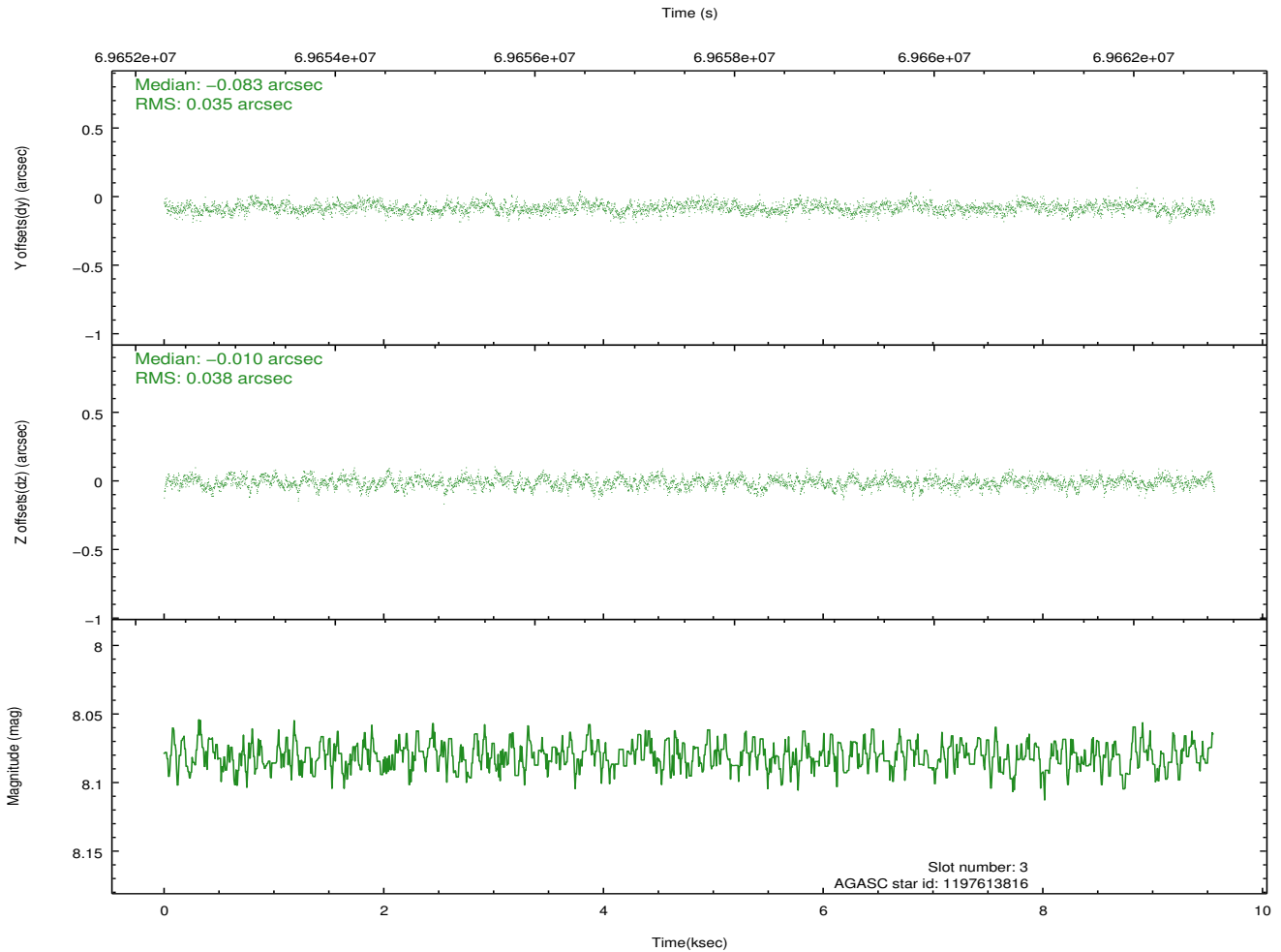
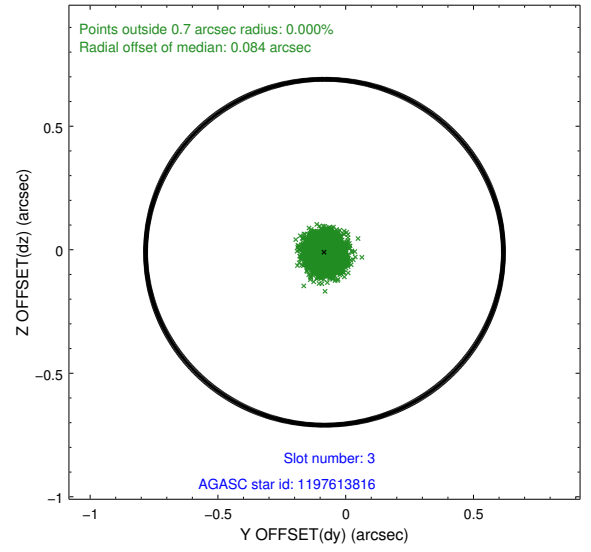
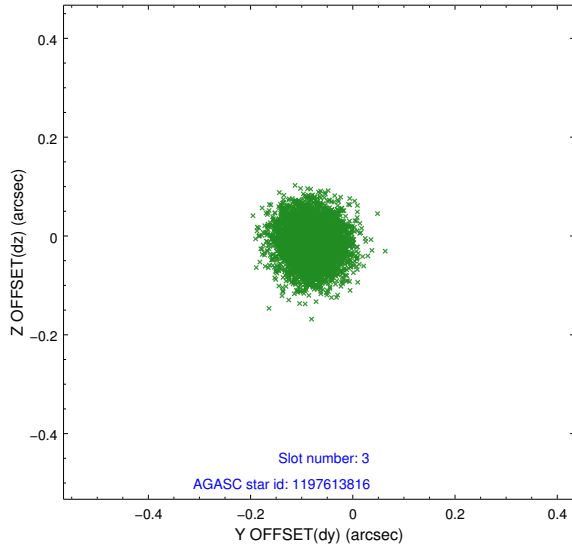


Slot Statistics

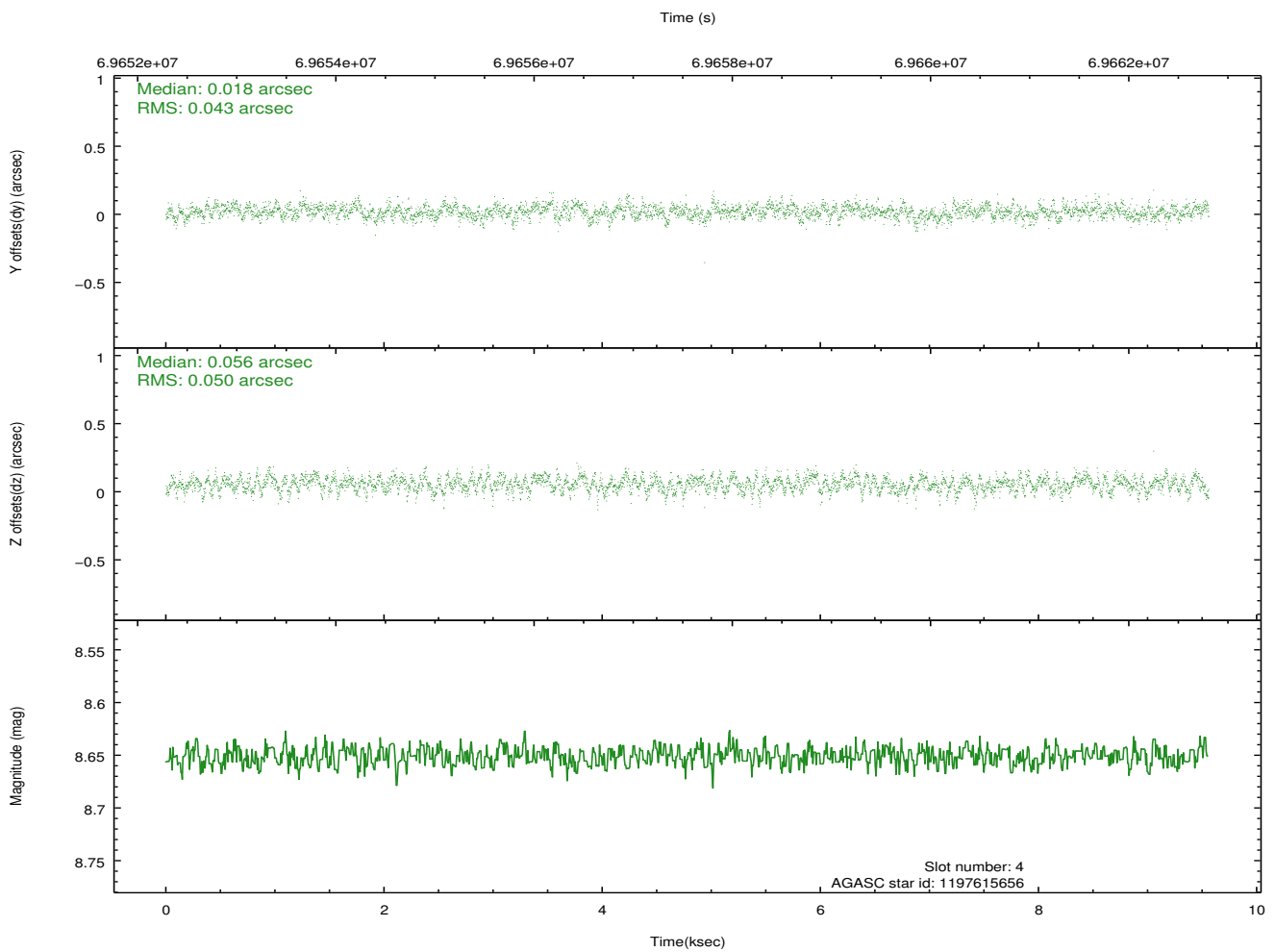
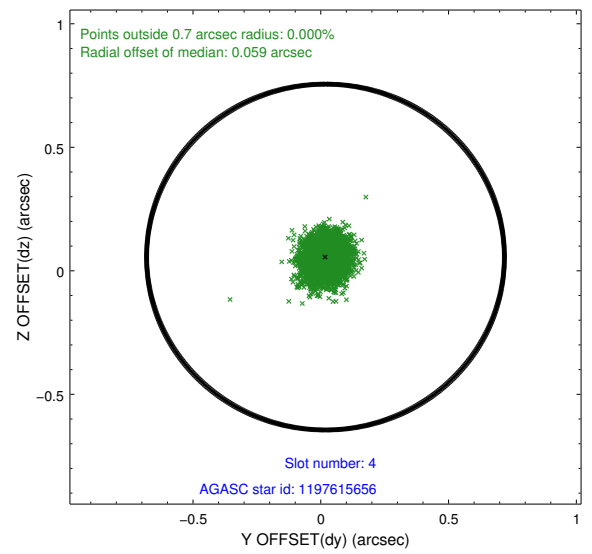
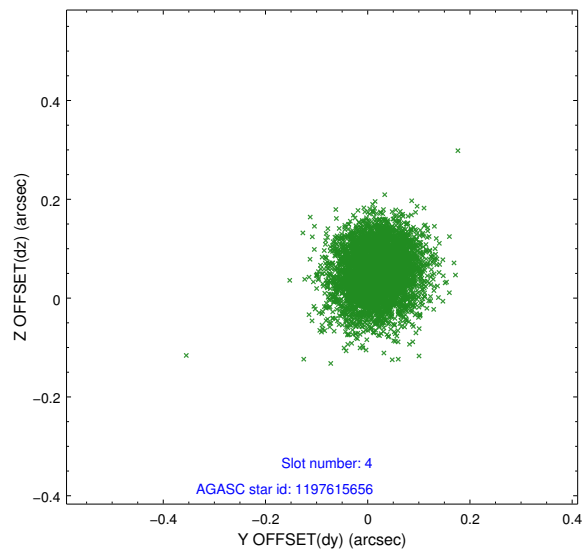
slot	status	id	mag	n_pts	med_dy	med_dz	dr1	dr2	ra	dec	mean_y	mean_z
0	FID	ACIS-I-2	7.16	2332	-0.029	-0.037	0.009	0.017	0.000000	0.000000	-755.03	-835.10
1	FID	ACIS-I-4	7.19	2332	-0.039	0.035	0.006	0.011	0.000000	0.000000	2158.77	1070.86
2	FID	ACIS-I-5	7.23	2332	-0.033	0.071	0.009	0.016	0.000000	0.000000	-1808.13	1069.40
3	GUIDE	1197613816	8.08	4664	-0.083	-0.010	0.055	0.088	5.181461	-71.977993	905.44	-424.80
4	GUIDE	1197615656	8.65	4660	0.018	0.056	0.070	0.114	6.909375	-71.882658	-1053.77	-448.29
5	GUIDE	1197607928	9.62	4661	0.080	-0.021	0.096	0.153	7.837743	-72.165759	-1879.17	744.04
6	GUIDE	1197619752	10.02	4661	0.040	0.022	0.108	0.177	4.510721	-71.856694	1584.14	-964.42
7	GUIDE	1197608712	10.07	4658	-0.057	-0.046	0.106	0.174	5.990463	-72.316052	213.45	916.19

2.4 Star Slots

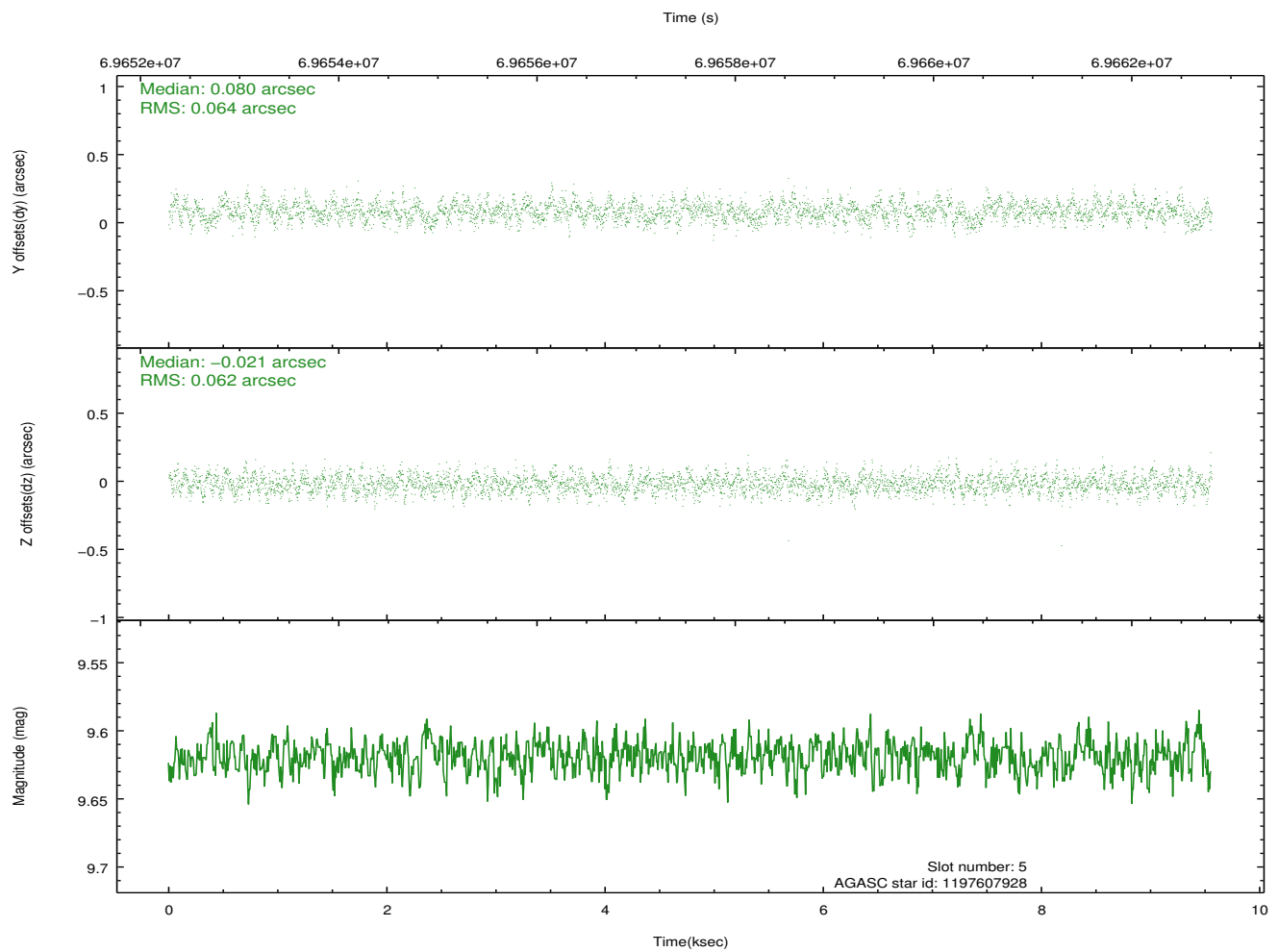
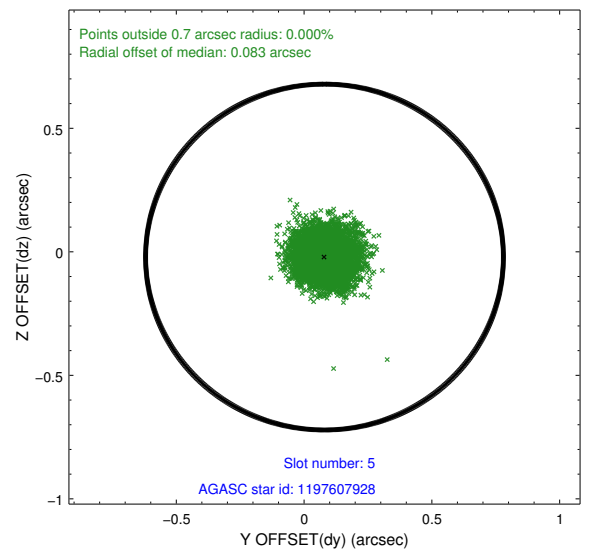
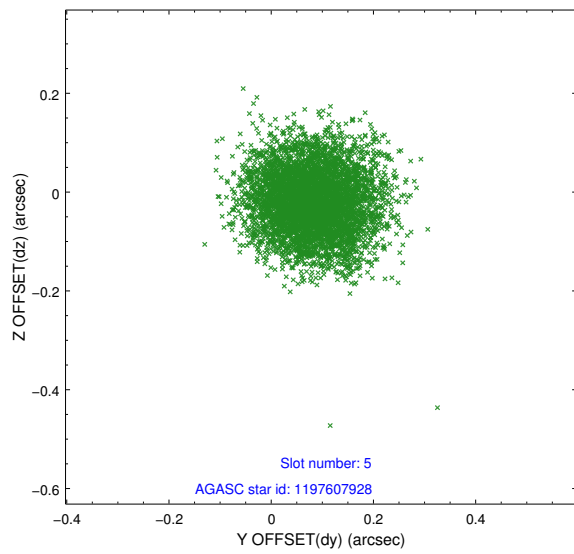
2.4.1 Slot 3



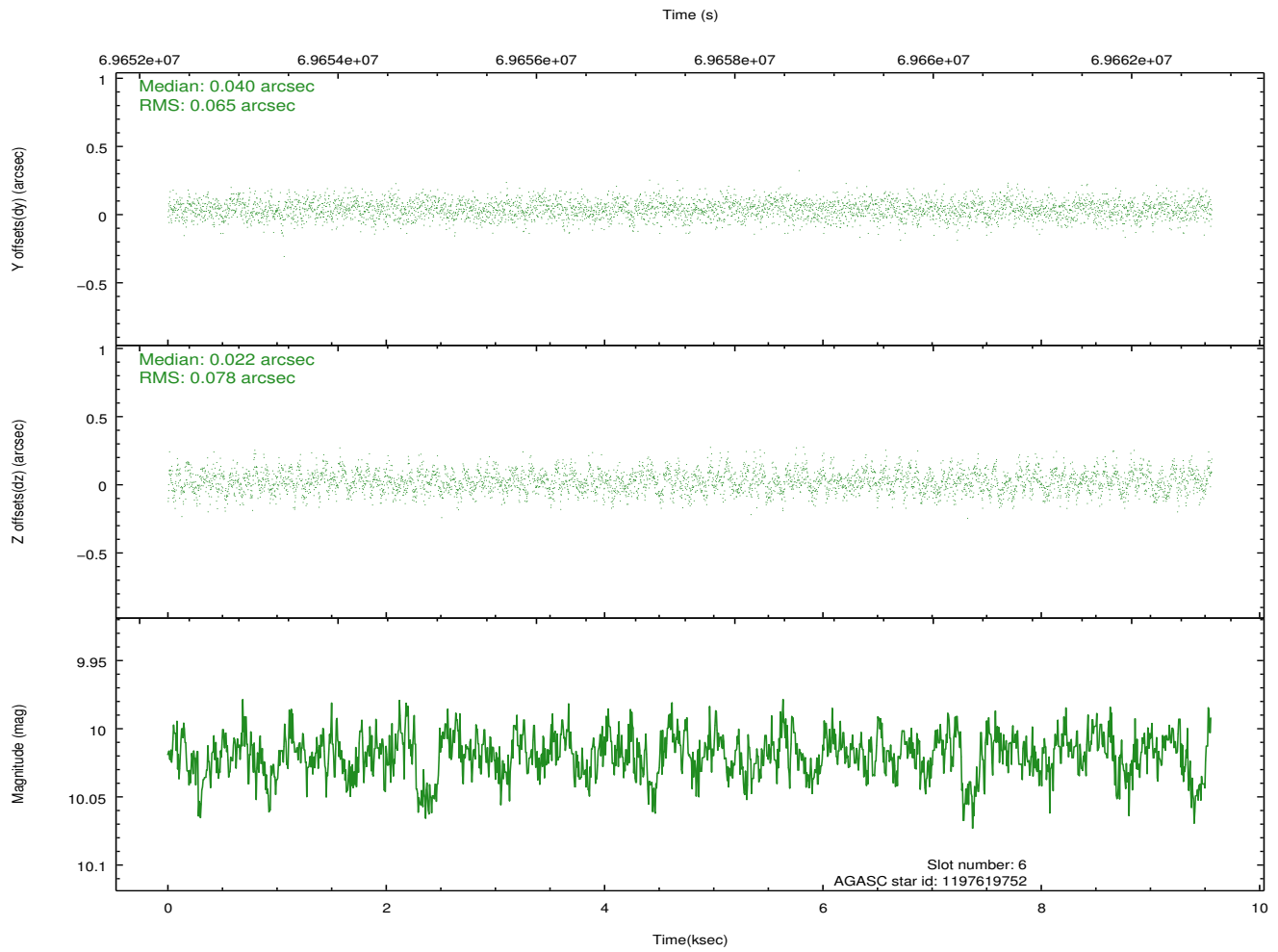
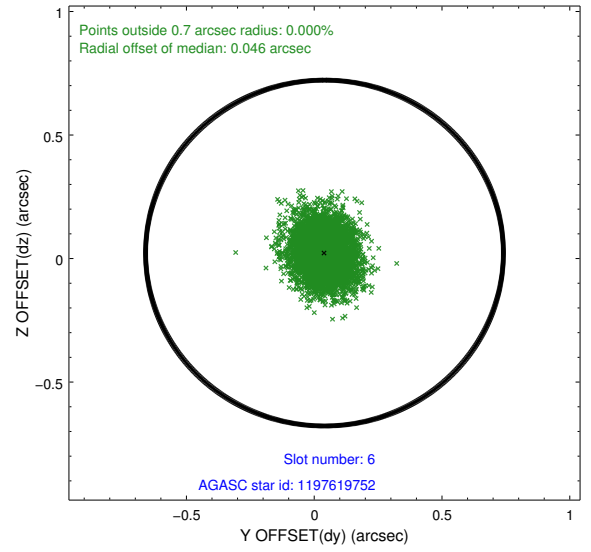
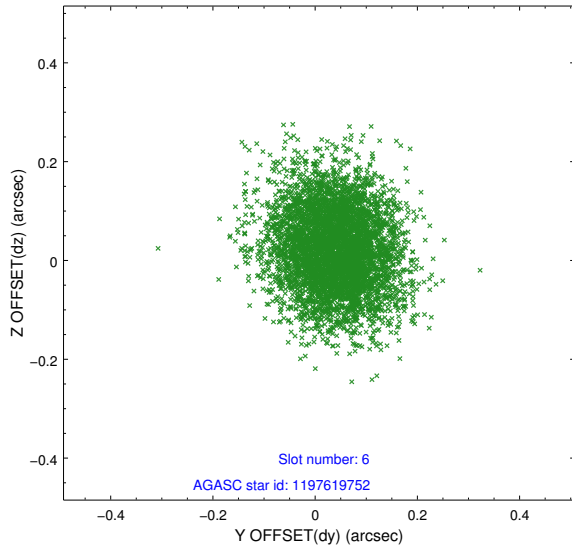
2.4.2 Slot 4



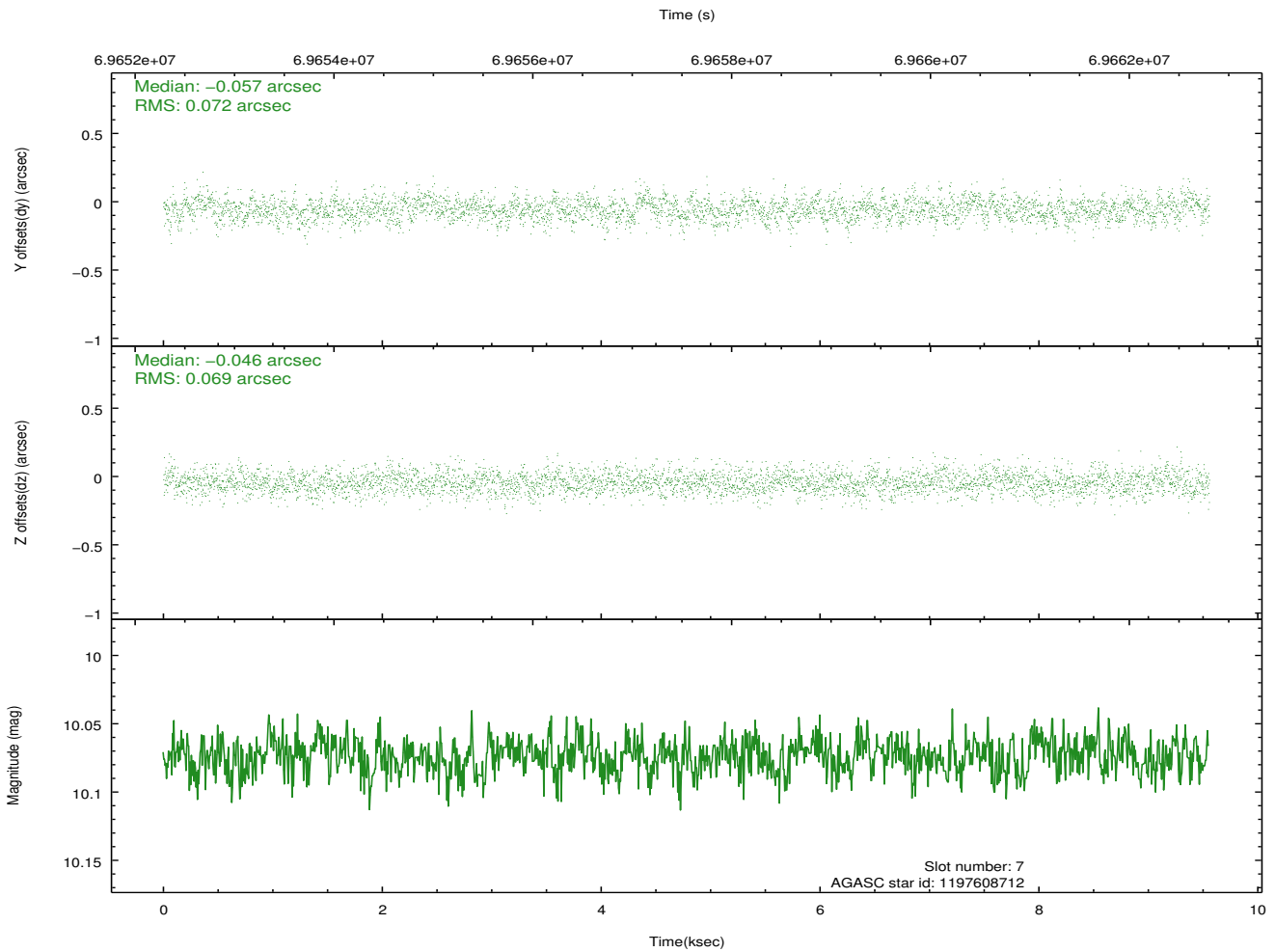
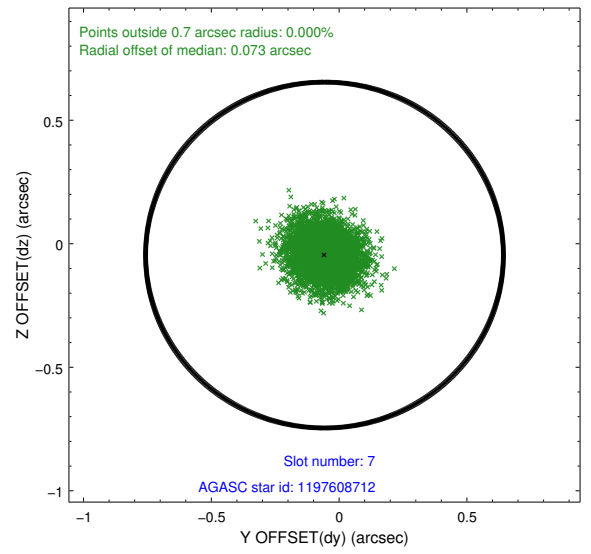
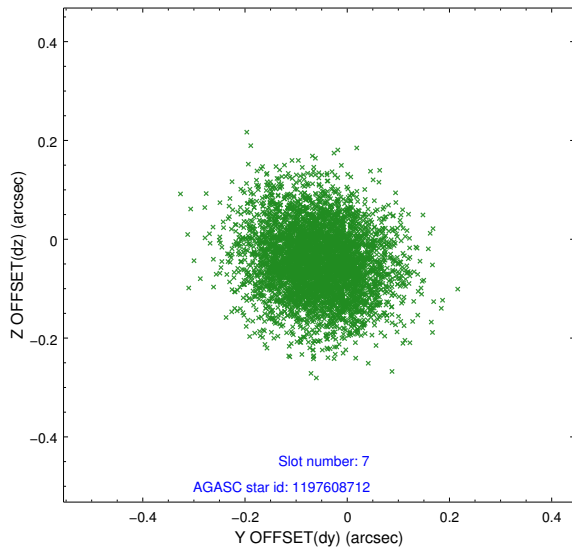
2.4.3 Slot 5



2.4.4 Slot 6

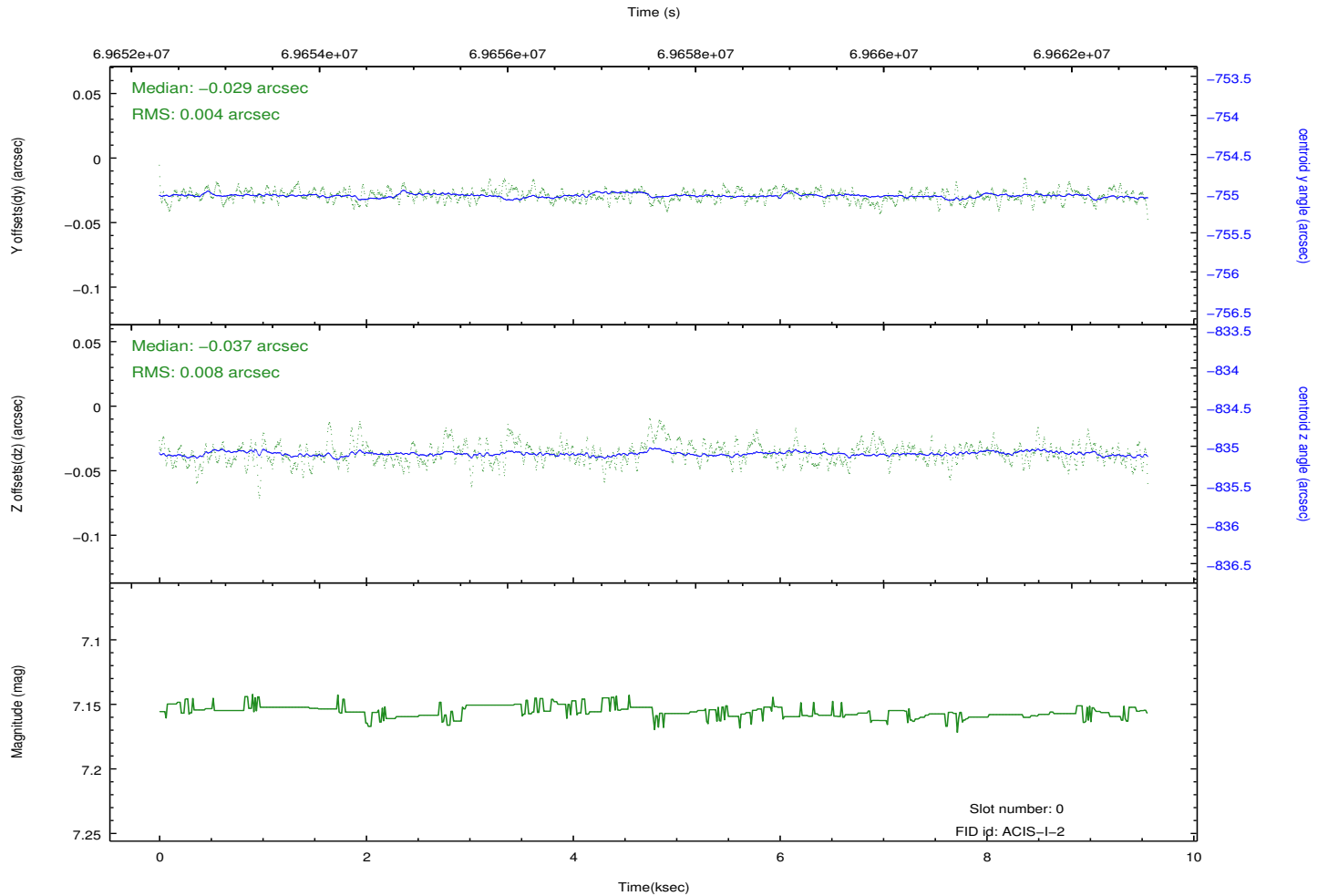
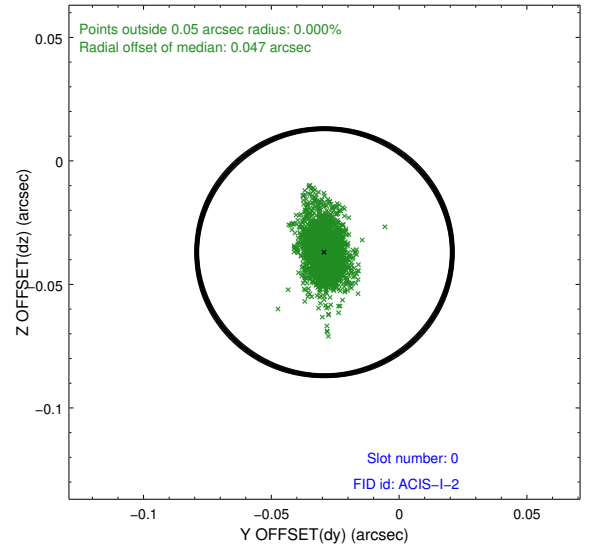
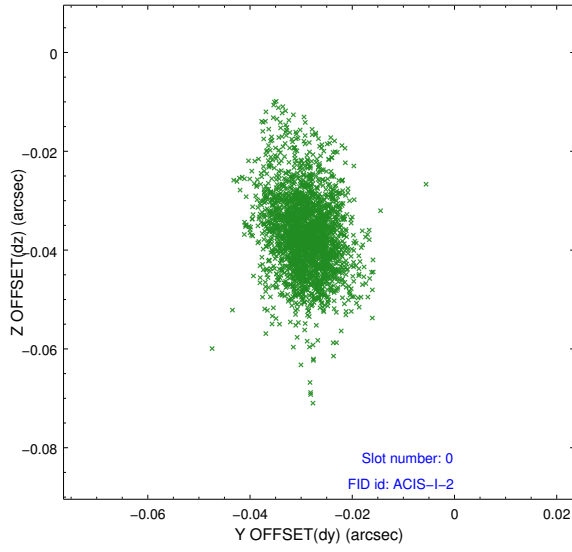


2.4.5 Slot 7

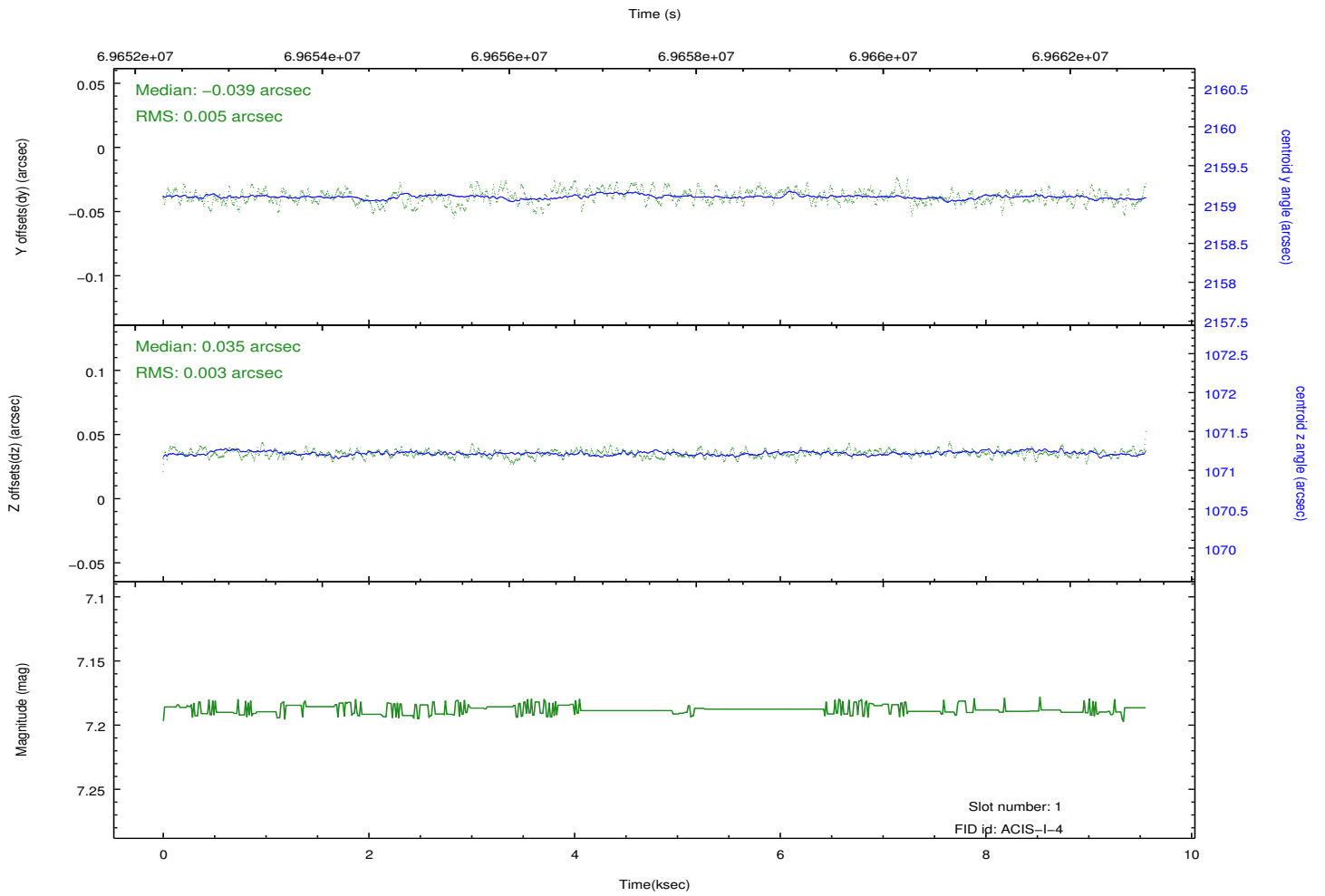
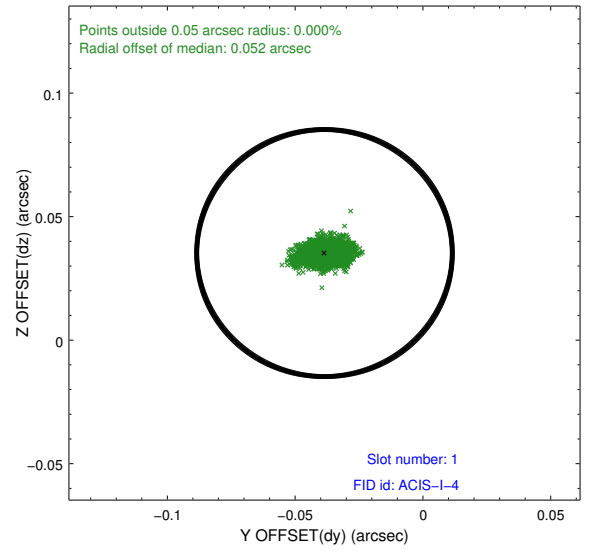
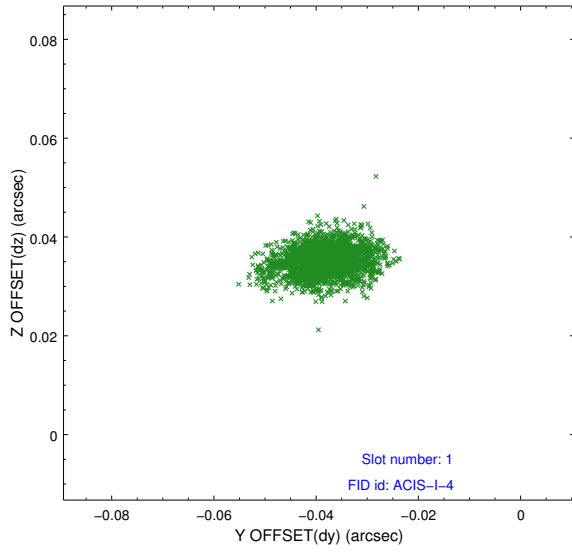


2.5 FID Slots

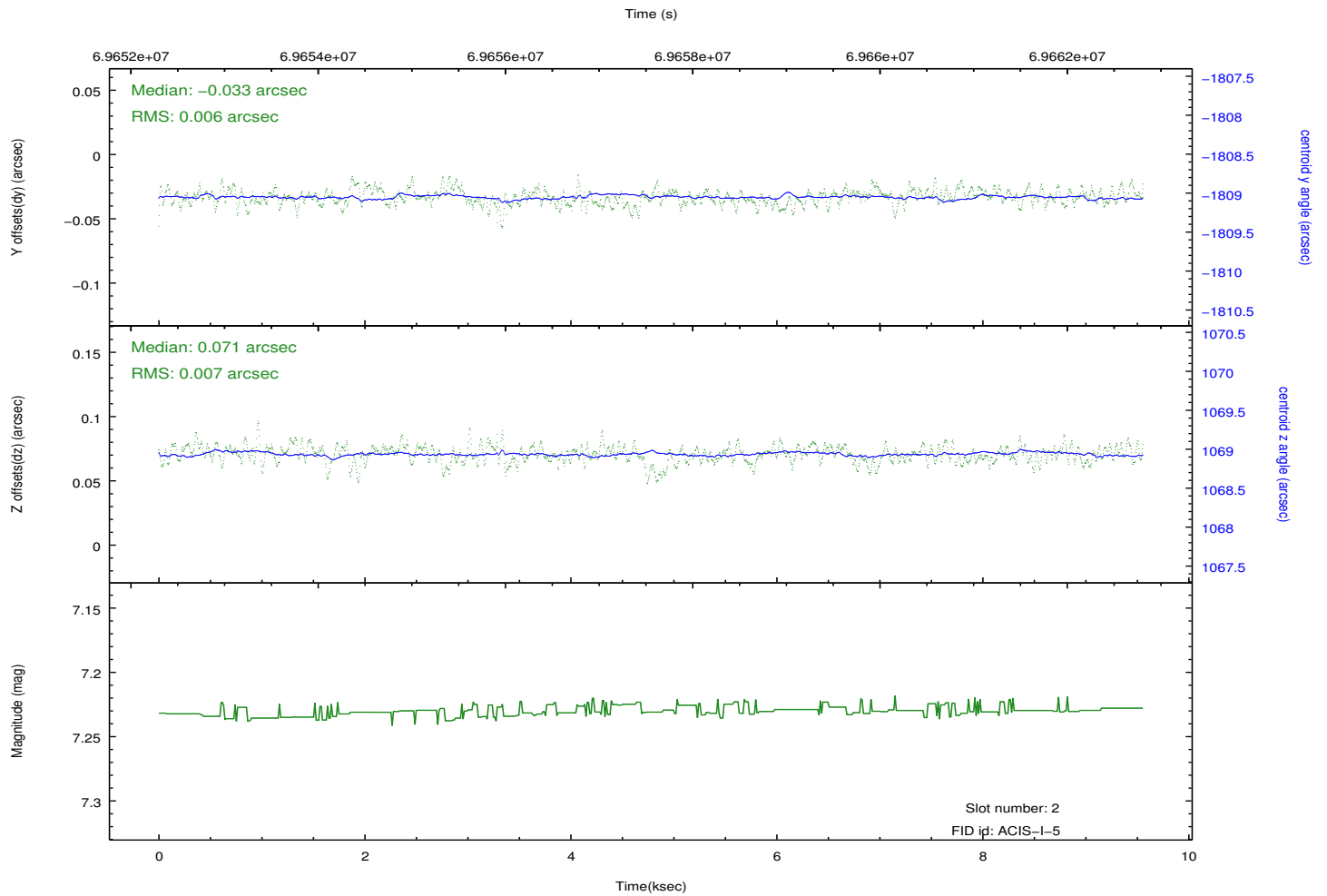
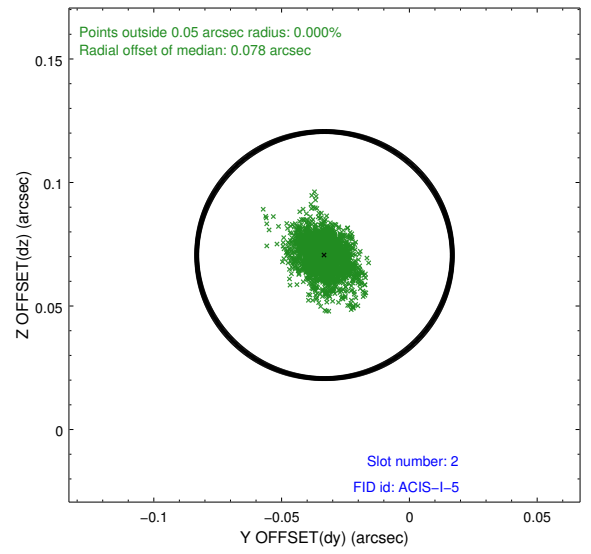
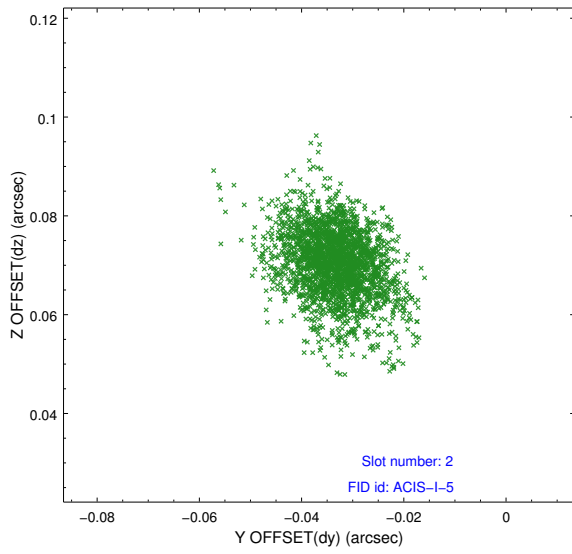
2.5.1 Slot 0



2.5.2 Slot 1



2.5.3 Slot 2



A Summary

A.1 Status

V&V Scientist	Jen Lauer
V&V Date (YYYY-MM-DD)	2012.08.27
V&V Edition	1
V&V Disposition and Status	OK
V&V Charge Time	4.905

A.2 Comments

Roll constraint met. Monitor constraint met.