

V&V Reference Report

L2 ASCDS Version : 8.4.4

Observation 9866 - L2 Version 2
Chandra X-Ray Center

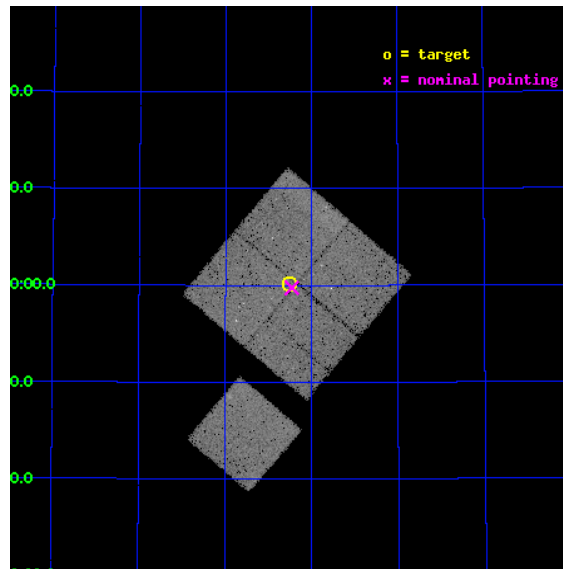
L2 Processing Date : May 16 2012

Contents

1	Front	2
2	OBI	3
2.1	OBI	3
2.1.1	Images	3
2.1.2	Bias	3
2.1.3	Parameters	4
2.1.4	Events	4
2.2	Compared Parameters	5
2.3	Aspect	6
2.4	Star Slots	9
2.4.1	Slot 3	9
2.4.2	Slot 4	10
2.4.3	Slot 5	11
2.4.4	Slot 6	12
2.4.5	Slot 7	13
2.5	FID Slots	14
2.5.1	Slot 0	14
2.5.2	Slot 1	15
2.5.3	Slot 2	16
A	Summary	17
A.1	Status	17
A.2	Comments	17

1 Front

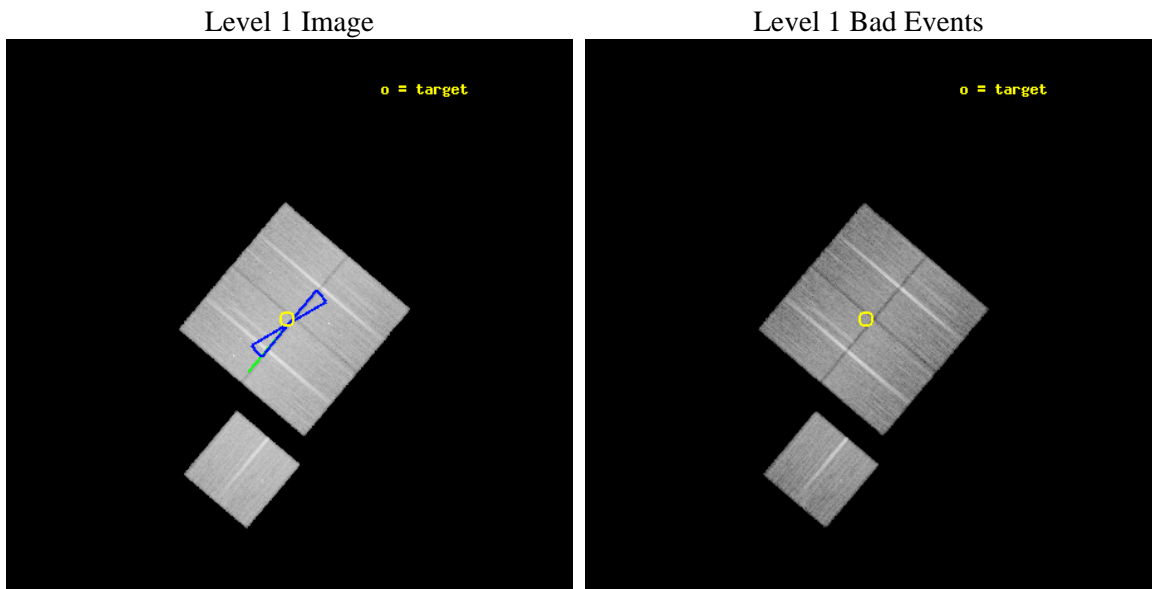
seq_num	900796	Sequence number
obs_id	9866	Observation id
title	The Evolution of Faint AGN at High Redshift	Proposal title
observer	Prof Kirpal Nandra	Principal investigator
object	AEGIS-1	Source name
dtcycle	0	
cycle	P	events from which exps? Prim/Second/Both
ra_targ	215.064583	Observer's specified target RA [deg]
dec_targ	53.002694	Observer's specified target Dec [deg]
ra_nom	215.05737065457	Nominal RA [deg]
dec_nom	52.995877981749	Nominal Dec [deg]
roll_nom	220.2144589529	Nominal Roll [deg]
revision	2	Processing version of data
ontime	26168.683310509	Sum of GTIs [s]
livetime	25826.770197953	Livetime [s]
ontime0	26165.41922009	Sum of GTIs [s]
ontime1	26178.024171472	Sum of GTIs [s]
ontime2	26171.783240974	Sum of GTIs [s]
ontime3	26168.683310509	Sum of GTIs [s]
ontime6	26177.942091465	Sum of GTIs [s]
l2events	88572	Number of level 2 events



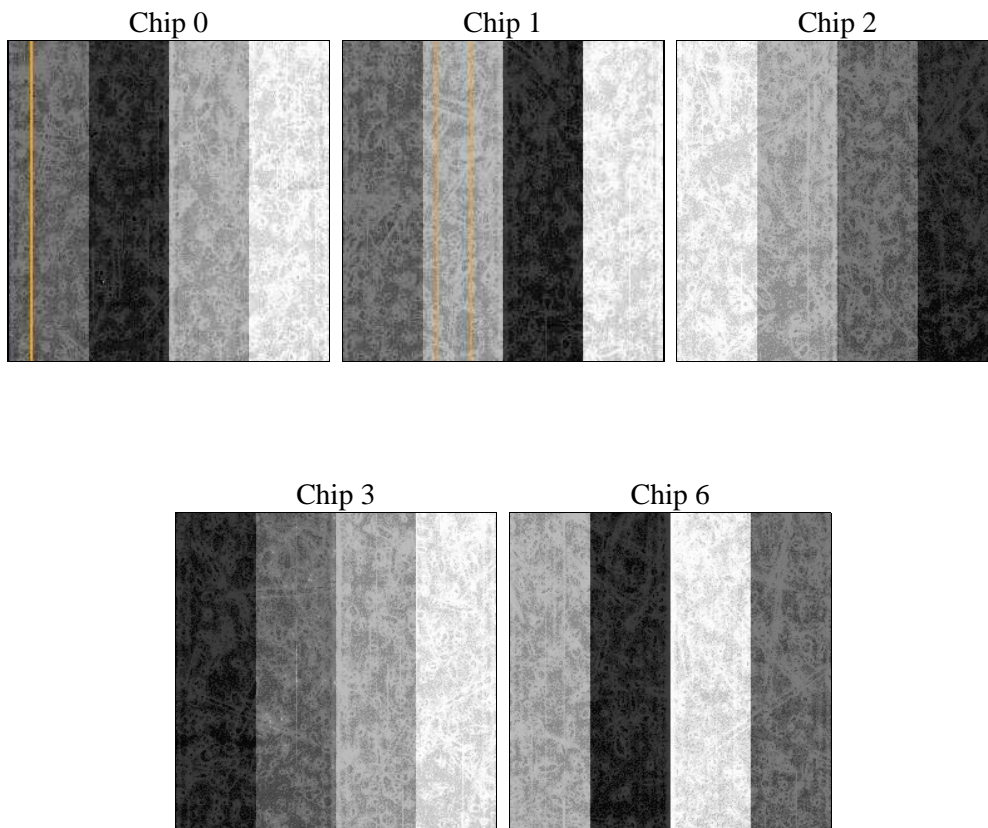
2 OBI

2.1 OBI

2.1.1 Images



2.1.2 Bias



2.1.3 Parameters

obi_num	0	Obi number	sched_exp_time	26040.000000	[s] Scheduled observation exposure time
ascdsver	8.4.4	Processing system revision	ontime	26168.683310509	Sum of GTIs [s]
caldbver	4.4.9	 	ontime0	26165.41922009	Sum of GTIs [s]
date	2012-05-16T03:37:09	Date and time of file creation	ontime1	26178.024171472	Sum of GTIs [s]
revision	2	Processing version of data	ontime2	26171.783240974	Sum of GTIs [s]
			ontime3	26168.683310509	Sum of GTIs [s]
			ontime6	26177.942091465	Sum of GTIs [s]
			l1events	1008074	Number of level 1 events

2.1.4 Events

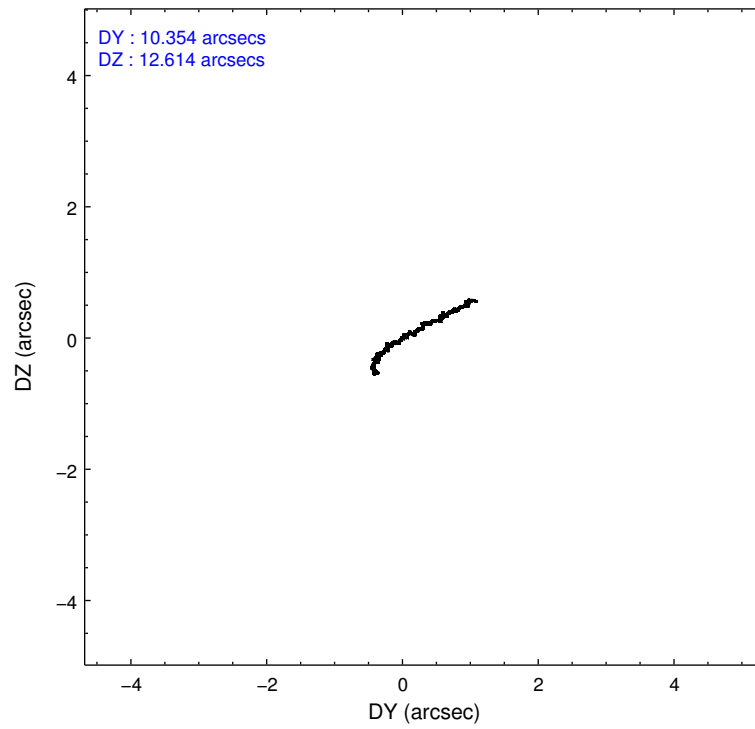
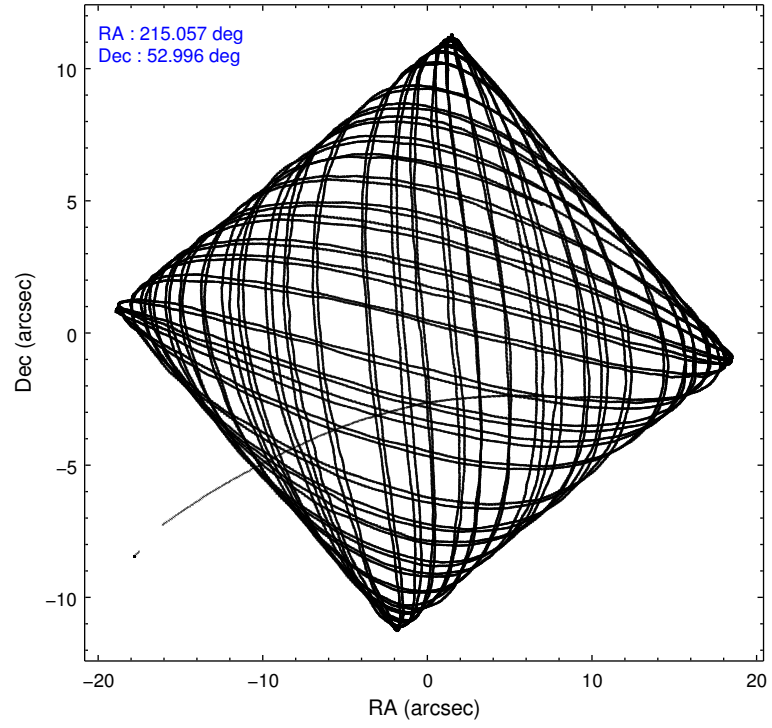
	ccd 0	ccd 1	ccd 2	ccd 3	ccd 6
level 1 events	190759	186614	212601	206878	211222
rejected events	169359	163247	192324	186521	190017
rejected %	88%	87%	90%	90%	89%

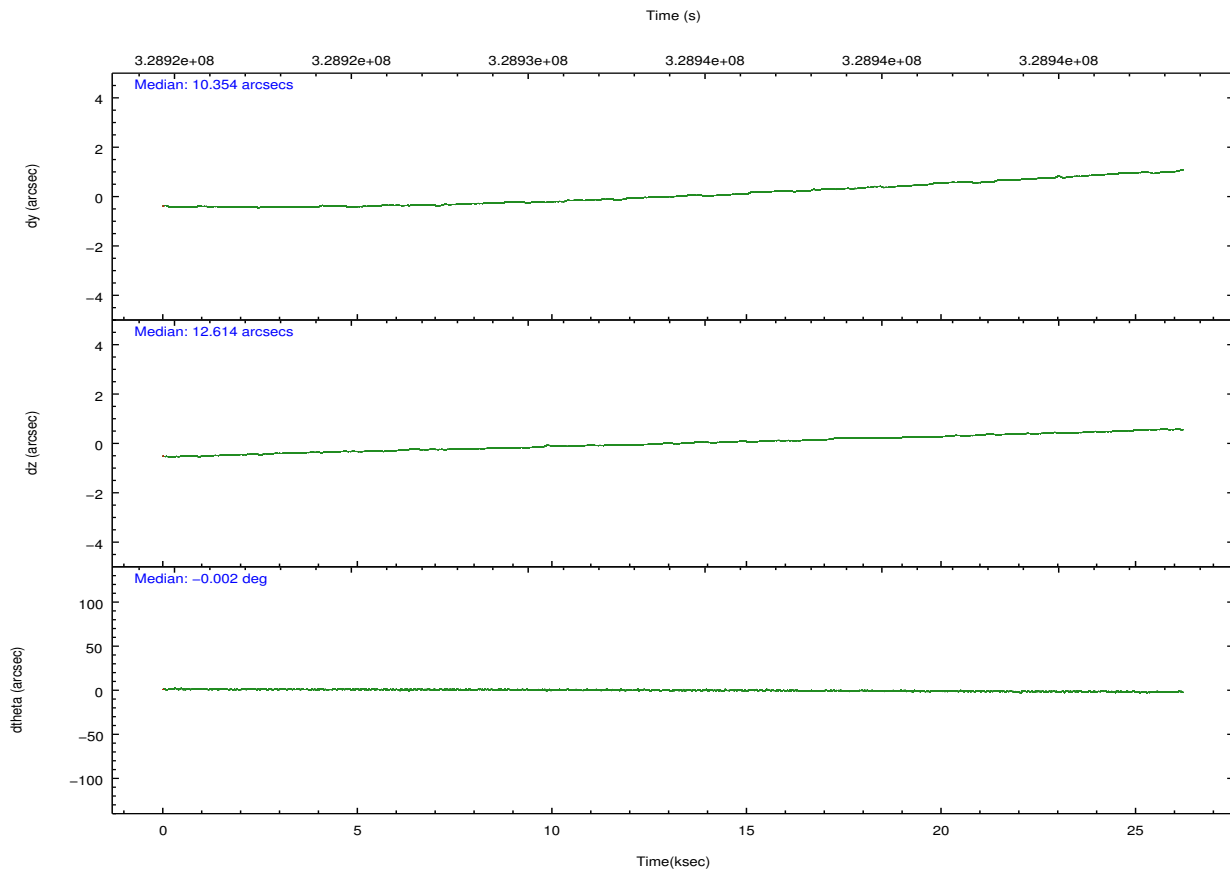
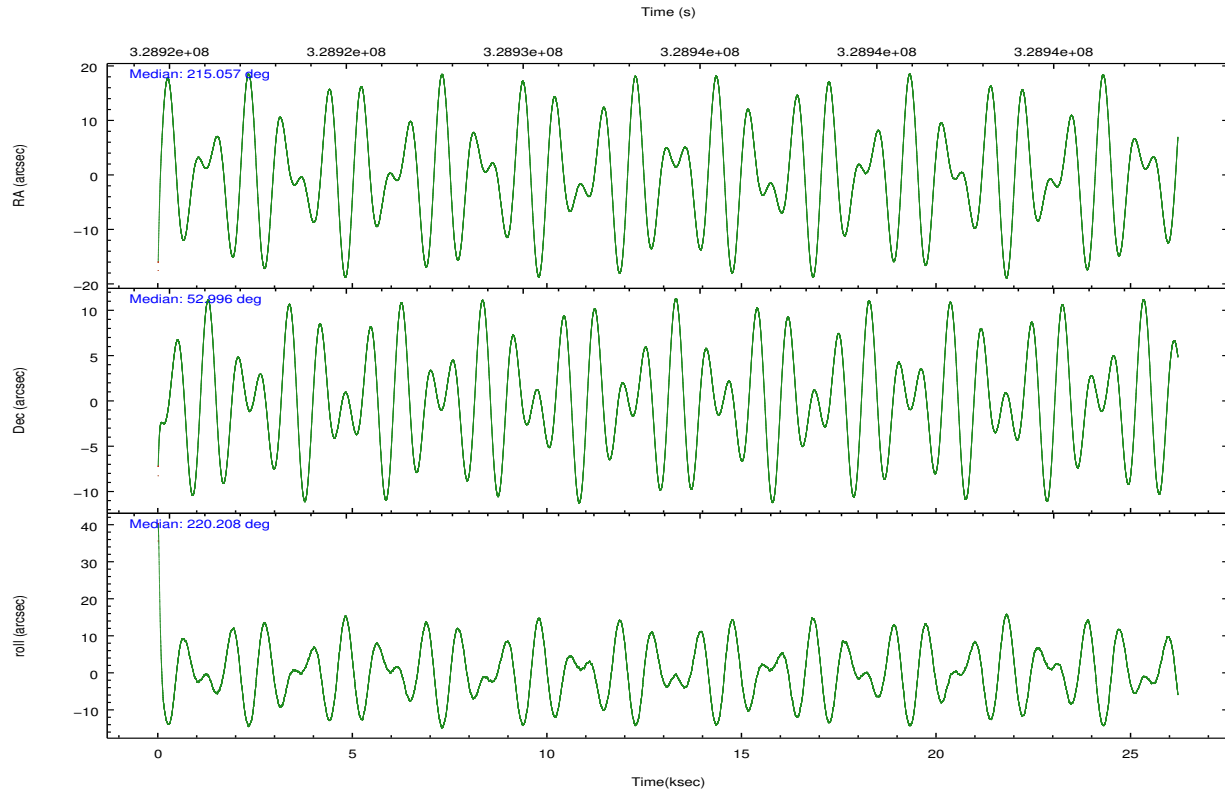
	ccd 0	ccd 1	ccd 2	ccd 3	ccd 6
grade 0 events	7668	8531	7165	7365	7343
	4%	4%	3%	3%	3%
grade 1 events	100	106	143	118	136
	0%	0%	0%	0%	0%
grade 2 events	5132	5342	5000	4487	4696
	2%	2%	2%	2%	2%
grade 3 events	2382	2444	2139	2207	2406
	1%	1%	1%	1%	1%
grade 4 events	2182	2472	2185	2188	2191
	1%	1%	1%	1%	1%
grade 5 events	7299	8118	6936	8662	8477
	3%	4%	3%	4%	4%
grade 6 events	4041	4583	3792	4115	4572
	2%	2%	1%	1%	2%
grade 7 events	161955	155018	185241	177736	181401
	84%	83%	87%	85%	85%

2.2 Compared Parameters

Parameter	Planned	Actual	Parameter	Planned	Actual
Instrument	ACIS	ACIS	Obspar format version number	7	7
Detector	ACIS-01236	ACIS-01236	Obspar file type	PREDICTED	ACTUAL
Grating	NONE	NONE	Obspar update status	NONE	UPDATED
Data mode	VFAINT	VFAINT	CCD I0 on	Y	Y
Observation mode	POINTING	POINTING	CCD I1 on	Y	Y
[deg] Pointing RA	215.072665	215.0573706545727	CCD I2 on	Y	Y
[deg] Pointing Dec	53.021792	52.99587798174895	CCD I3 on	Y	Y
[deg] Pointing Roll	219.993539	220.214458952898	CCD S0 on	N	N
[deg] Roll angle	50.000000	50.000000	CCD S1 on	N	N
[deg] Roll tolerance	10.000000	10.000000	CCD S2 on	O1	Y
Roll constraint allows 180D rotation	Y	Y	CCD S3 on	N	N
[mm] SIM focus pos	-0.782348	-0.7809083437167272	CCD S4 on	N	N
[mm] SIM defocus	0	0.001439871863259334	CCD S5 on	N	N
[mm] SIM translation stage pos	-233.592463	-233.5874344608287	Number of optional ACIS chips dropped	0	0
[mm] SIM translation stage offset	0	-0.005018542100998502	On-chip summing requested	N	N
[s] Observation start time (MET)	328921170.184000	328920194.56633	Subarray requested	NONE	NONE
Observation start date	2008-06-03T22:58:25	2008-06-03T22:43:14	Alternating exposures requested	N	N
[s] Observation end time (MET)	328947210.184000	328948181.16769	[s] Primary exposure time	0.000000	3.1
Observation end date	2008-06-04T06:12:25	2008-06-04T06:29:41			
Read mode	TIMED	TIMED			

2.3 Aspect



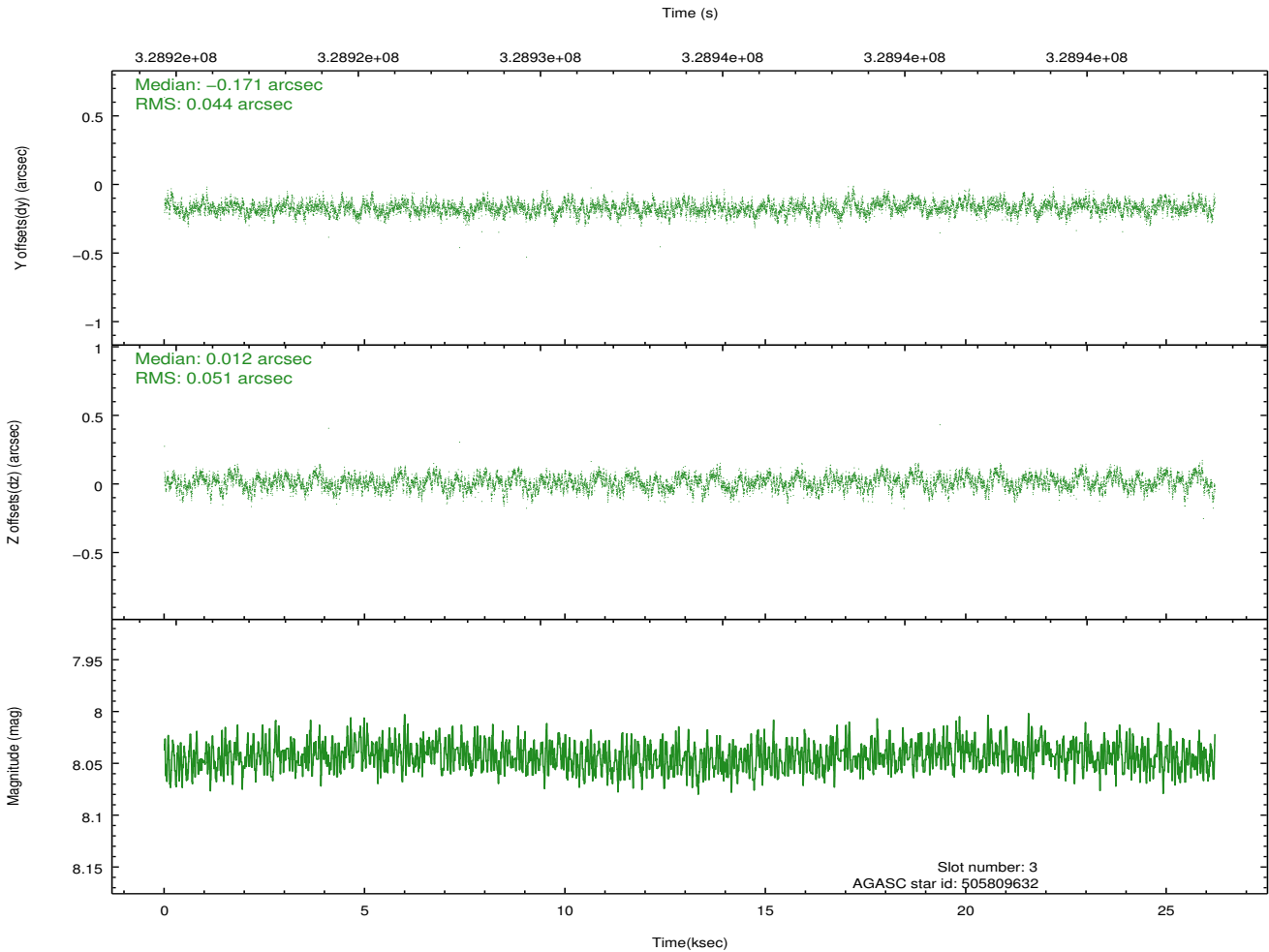
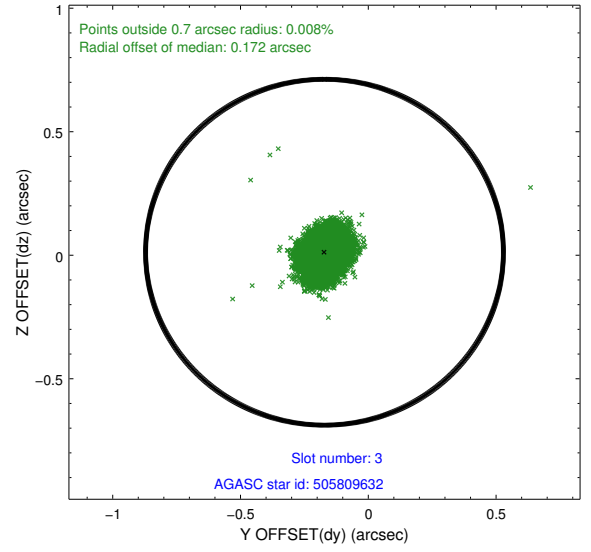
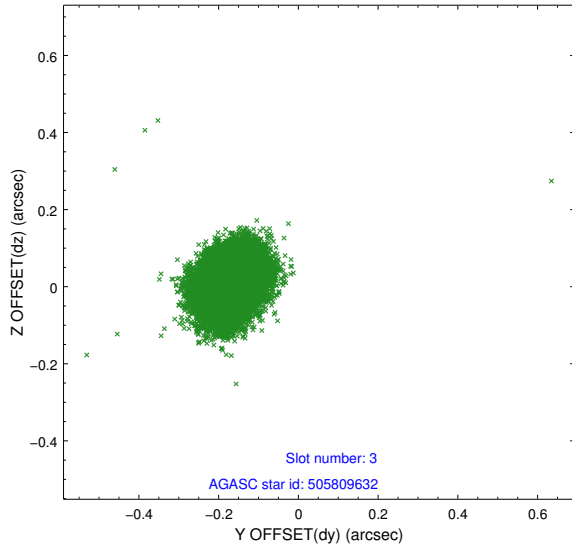


Slot Statistics

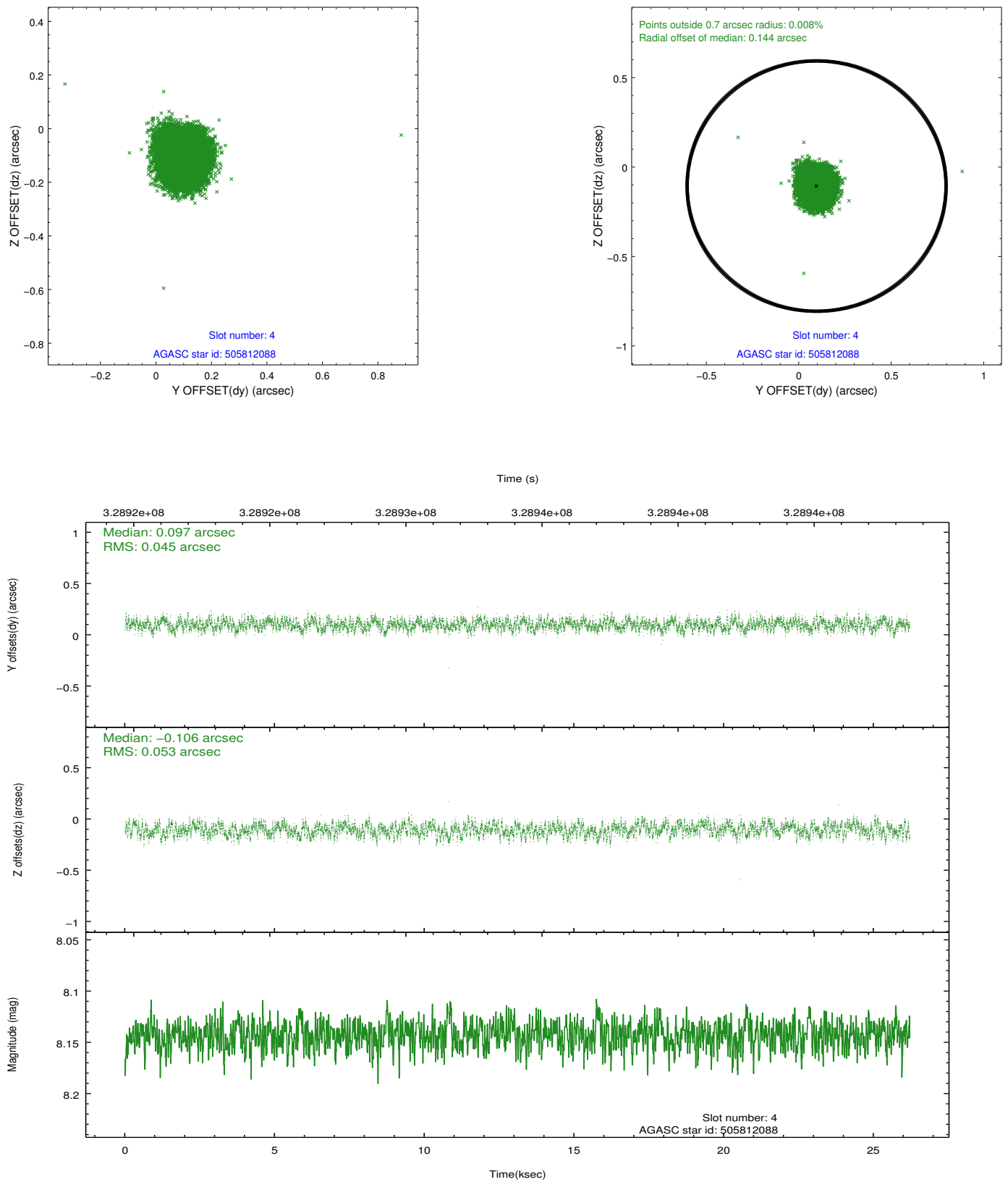
slot	status	id	mag	n_pts	med_dy	med_dz	dr1	dr2	ra	dec	mean_y	mean_z
0	FID	ACIS-I-1	7.06	6393	0.051	-0.000	0.030	0.044	0.000000	0.000000	929.17	-836.16
1	FID	ACIS-I-5	7.04	6393	-0.191	0.065	0.025	0.039	0.000000	0.000000	-1819.10	1061.35
2	FID	ACIS-I-6	7.04	6392	0.048	0.005	0.012	0.019	0.000000	0.000000	394.61	1705.90
3	GUIDE	505809632	8.04	12777	-0.171	0.012	0.072	0.113	215.499426	53.521185	-1856.82	-792.47
4	GUIDE	505812088	8.14	12781	0.097	-0.106	0.075	0.115	214.186617	53.263562	895.12	-1902.00
5	GUIDE	505812376	7.69	12782	0.128	-0.157	0.080	0.117	214.039537	52.937930	1901.48	-1221.66
6	GUIDE	505815928	8.32	12784	-0.164	0.066	0.056	0.094	216.234742	53.074559	-2060.55	1454.03
7	GUIDE	455871352	8.10	12781	0.109	0.186	0.061	0.097	215.099961	52.172669	1918.49	2381.33

2.4 Star Slots

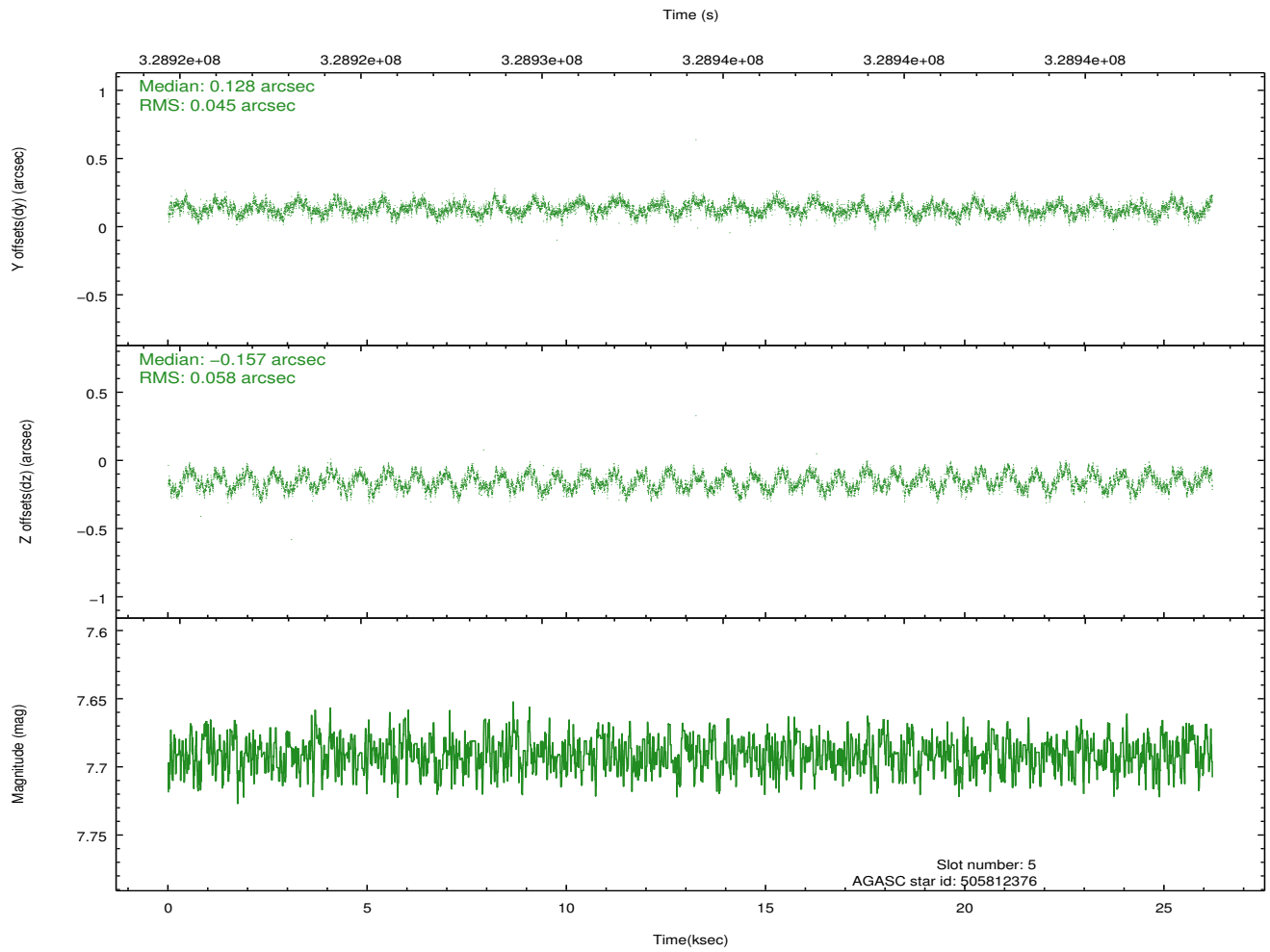
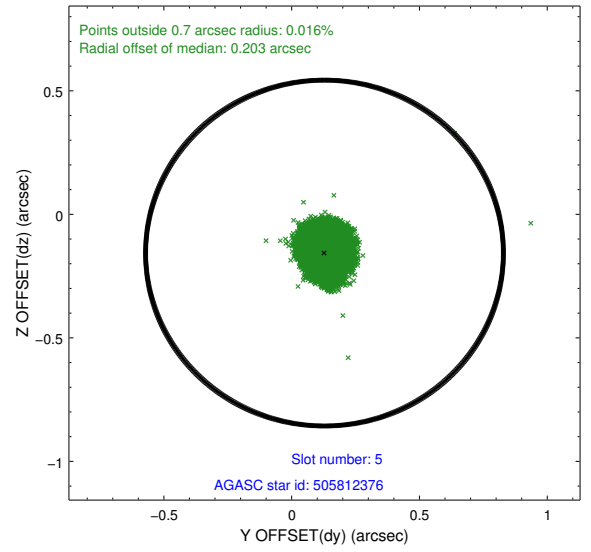
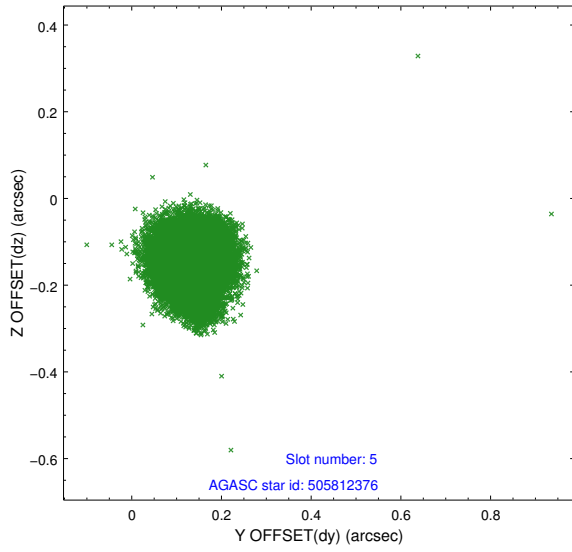
2.4.1 Slot 3



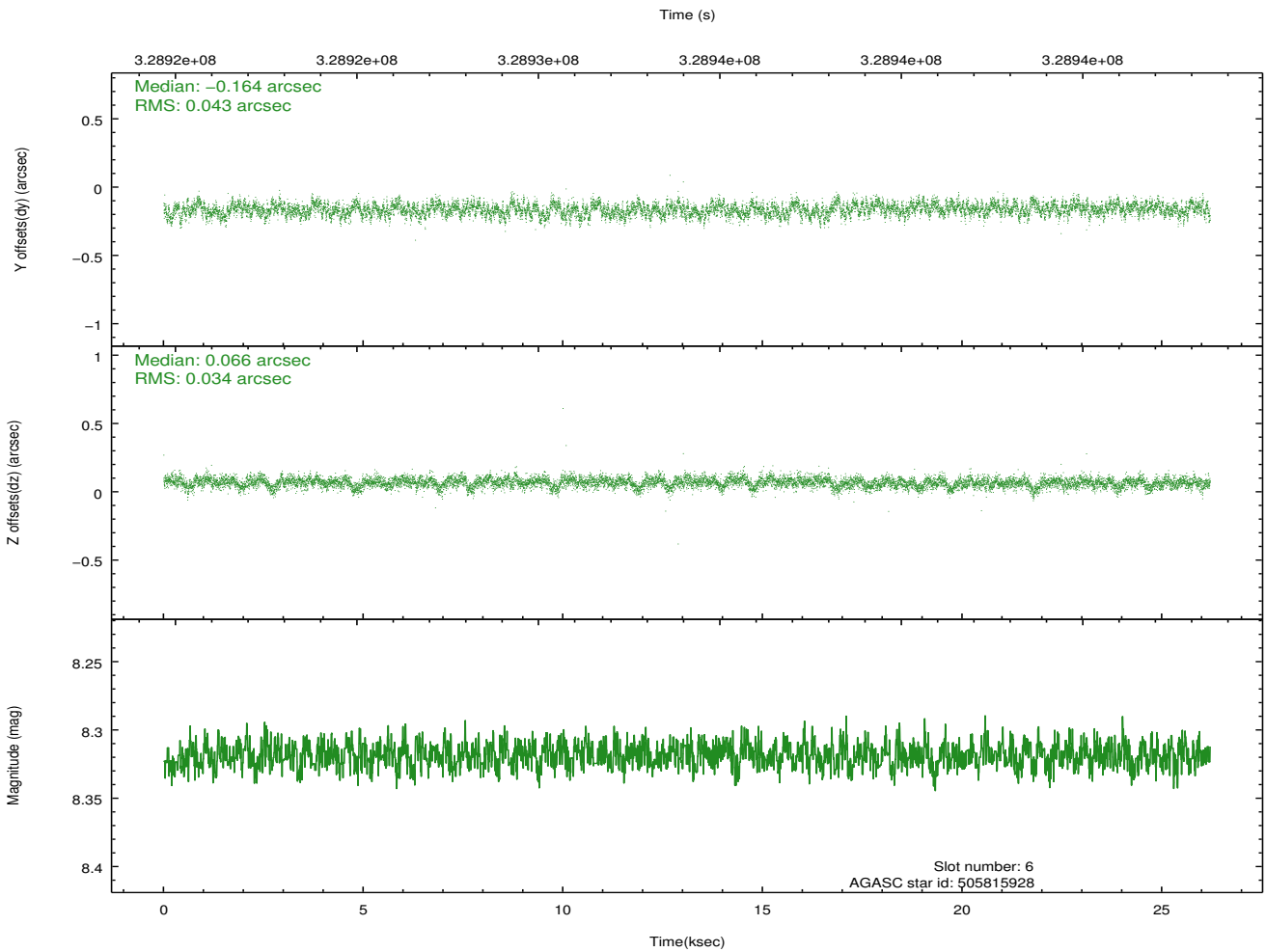
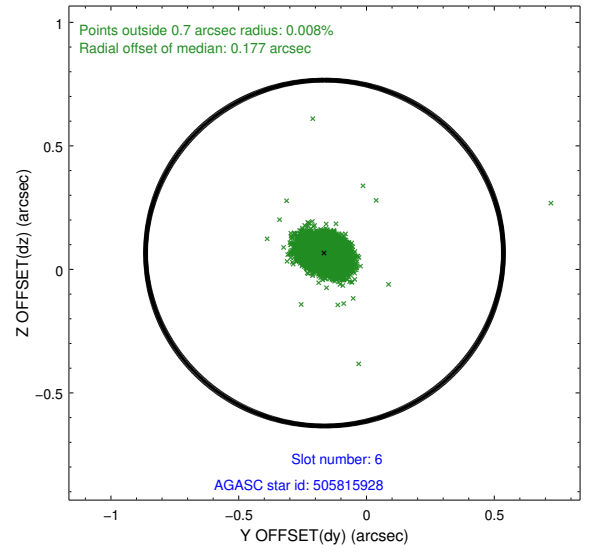
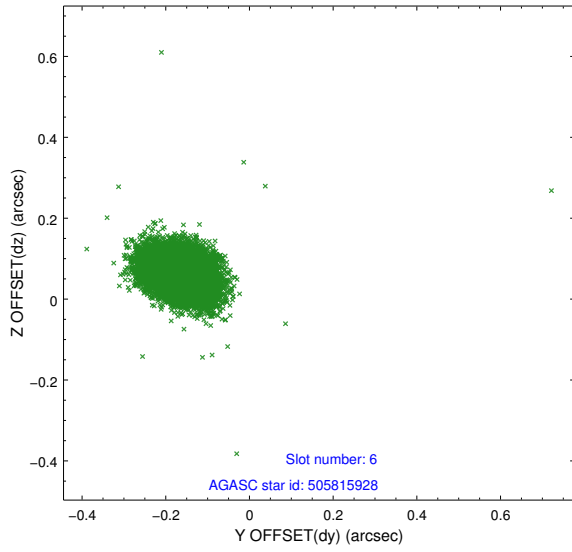
2.4.2 Slot 4



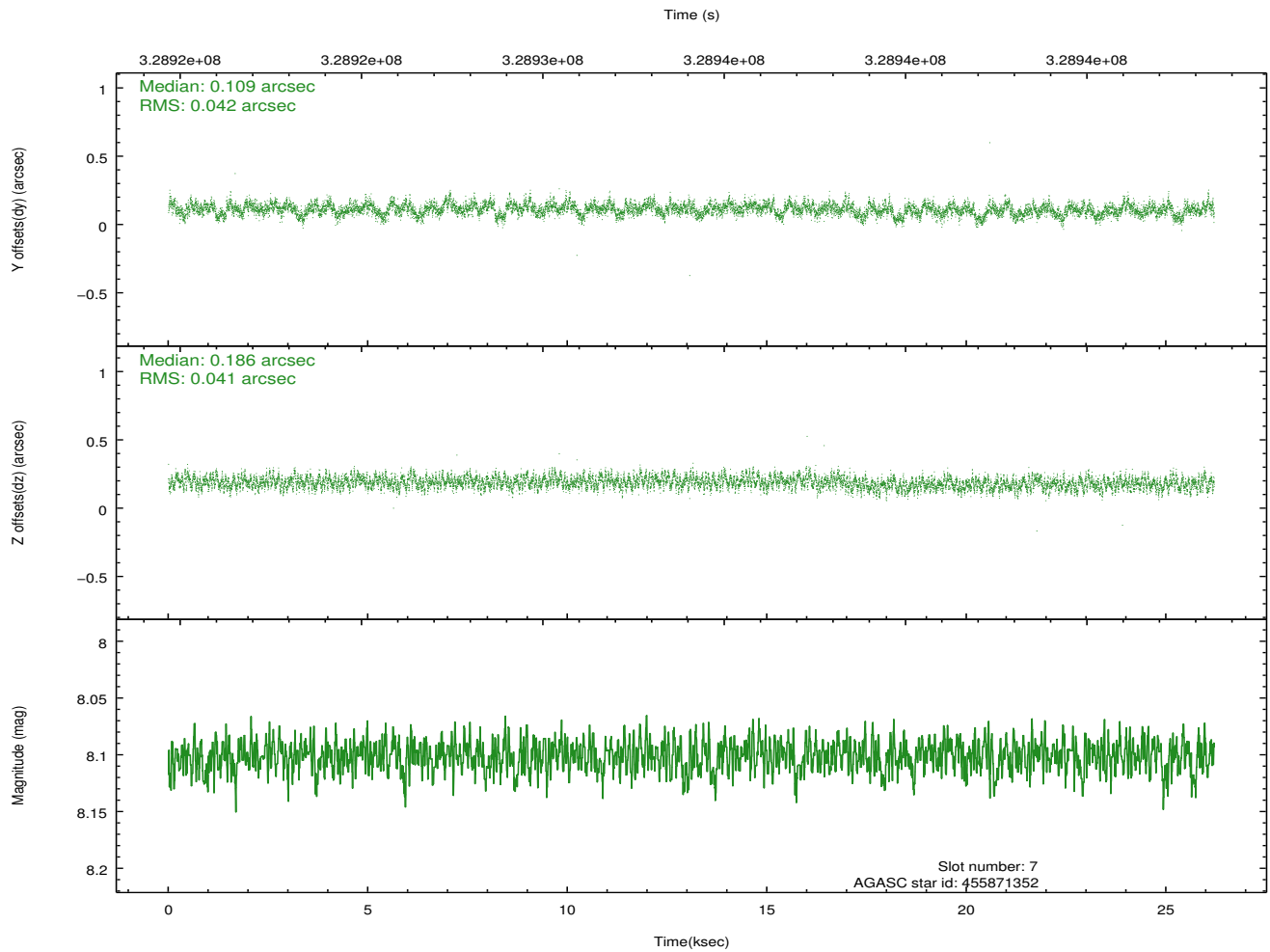
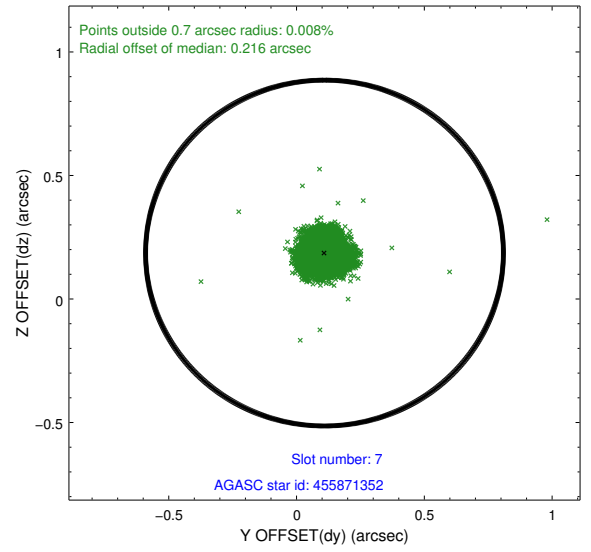
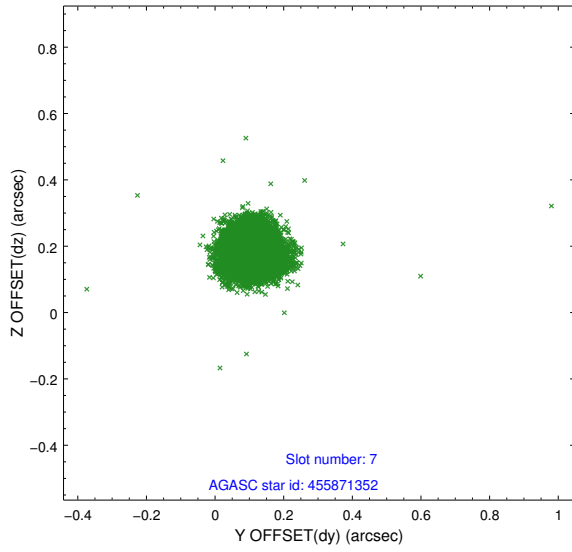
2.4.3 Slot 5



2.4.4 Slot 6

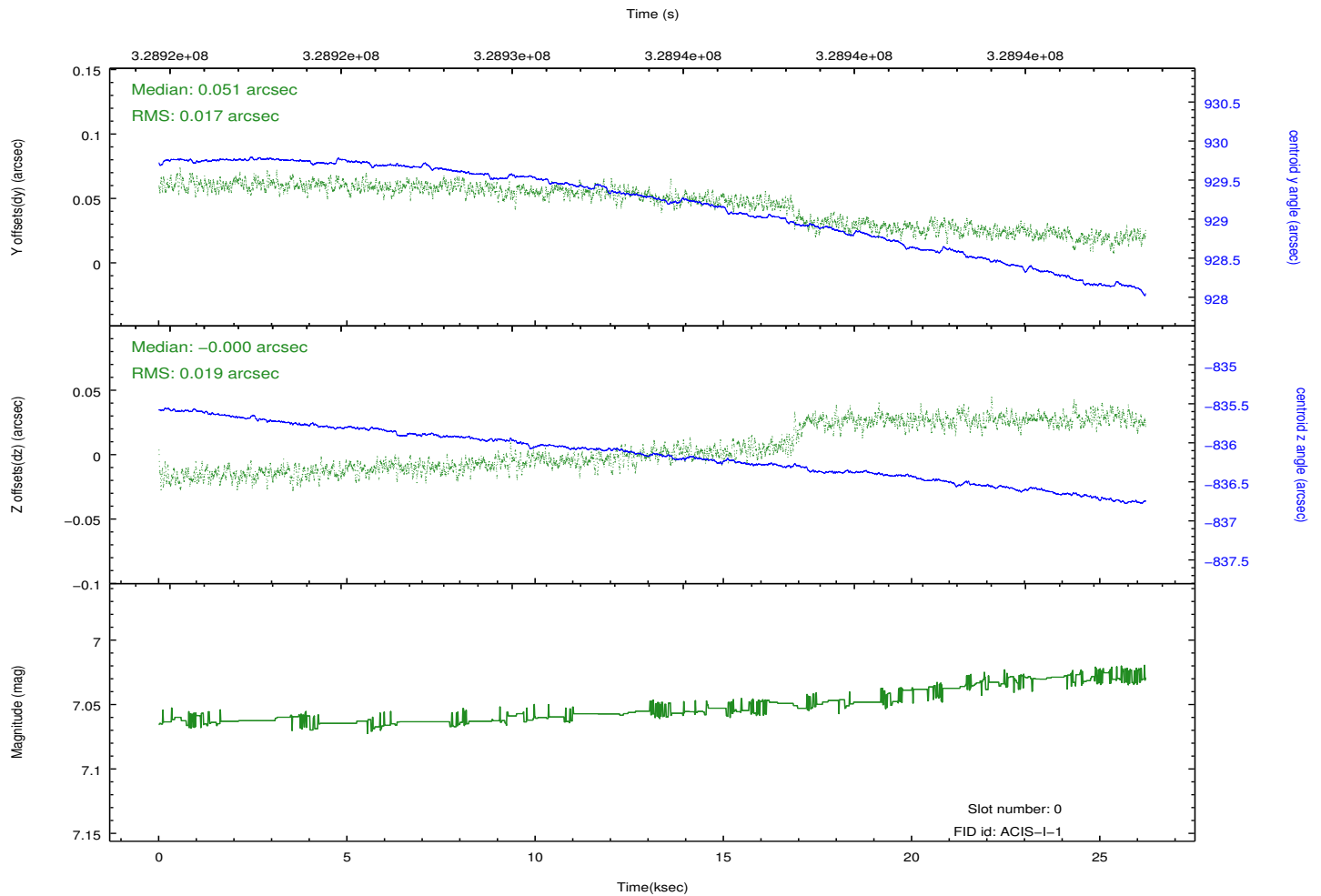
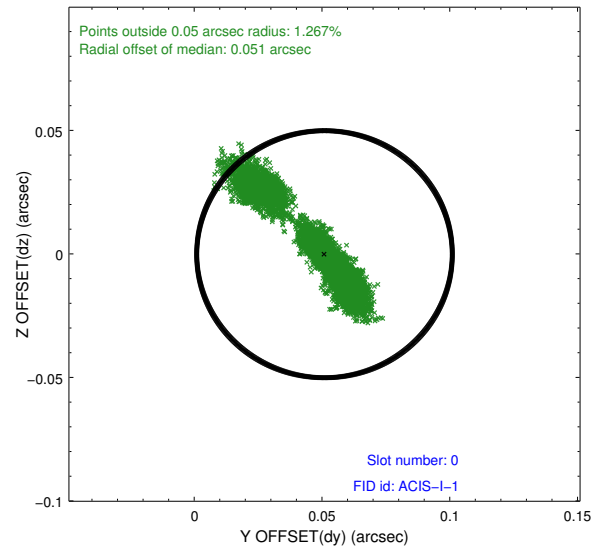
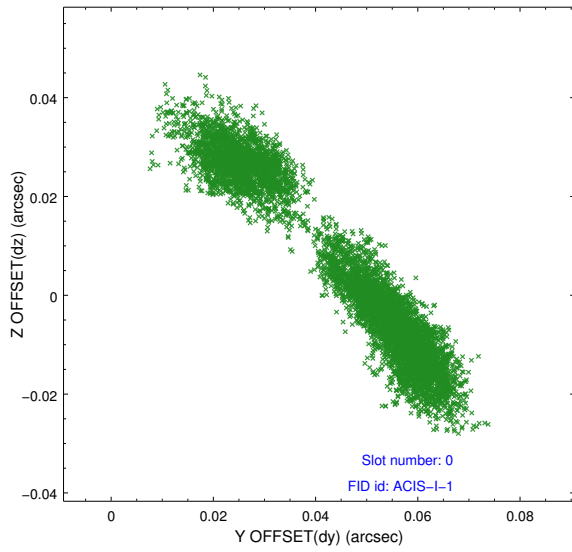


2.4.5 Slot 7

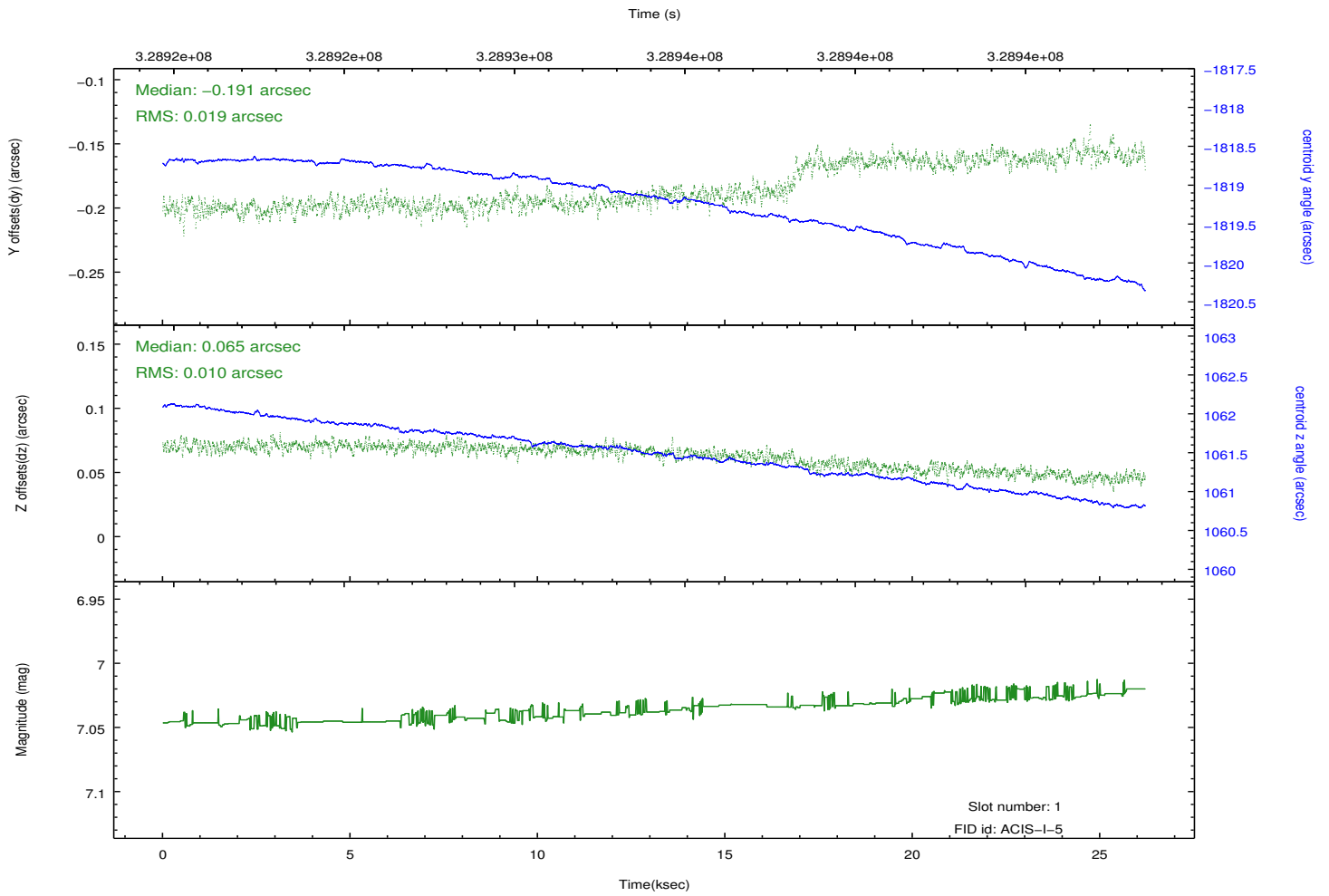
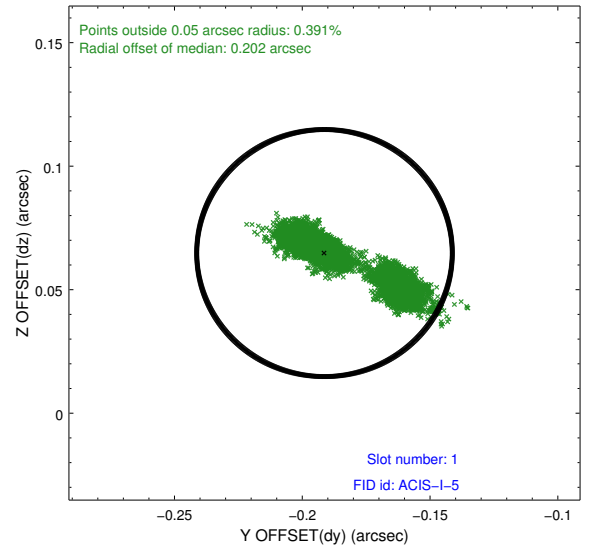
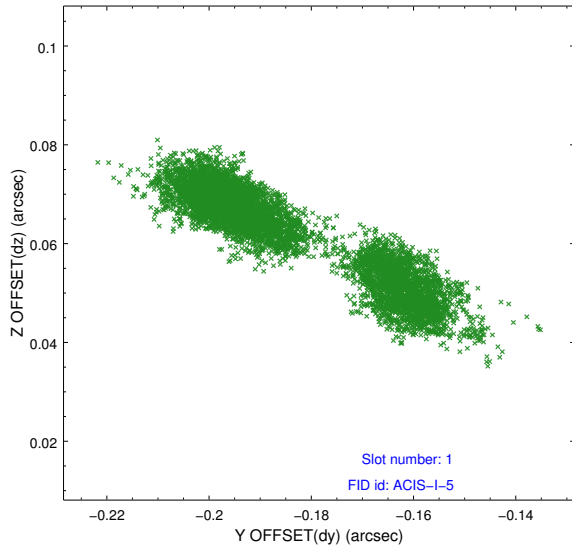


2.5 FID Slots

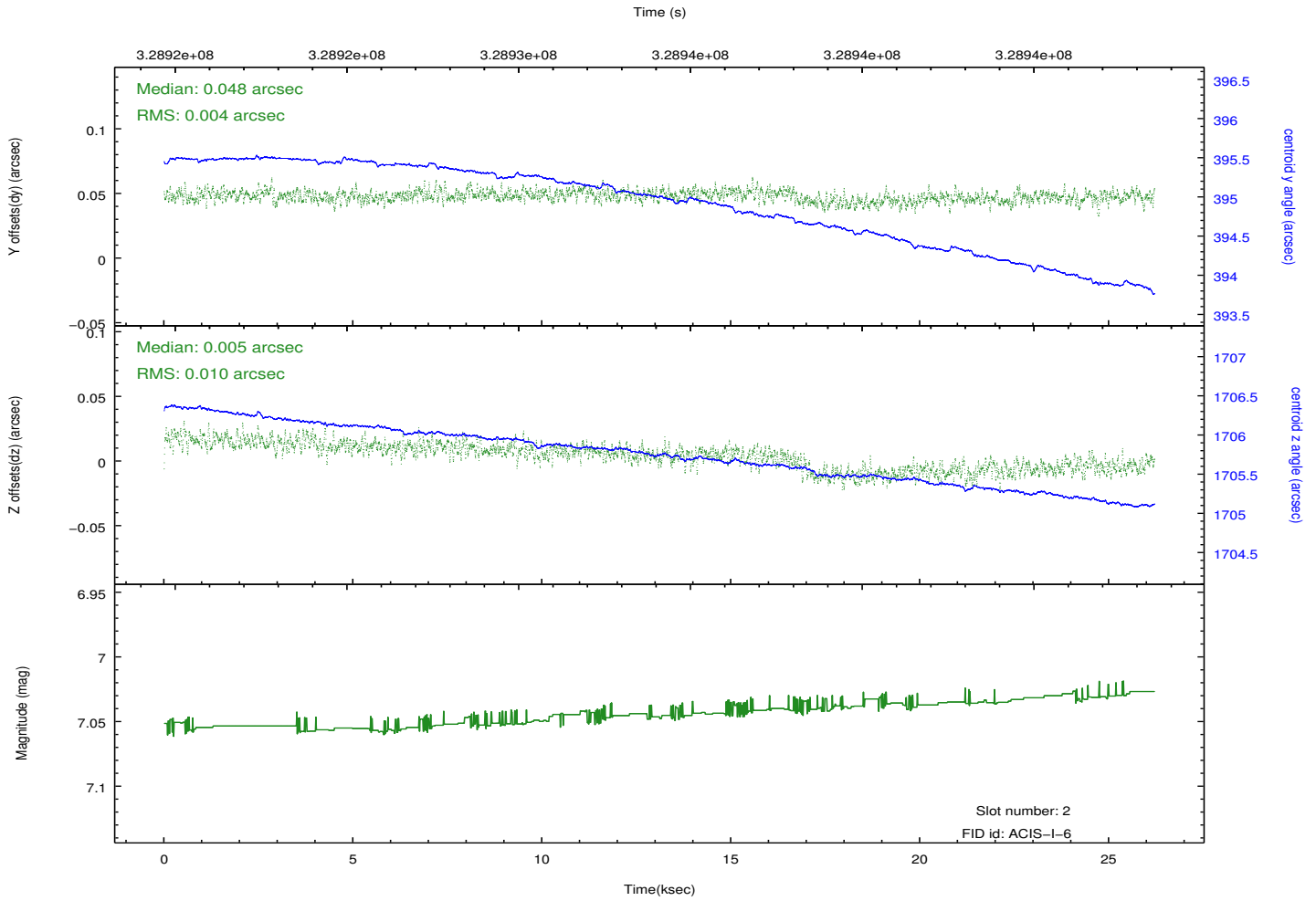
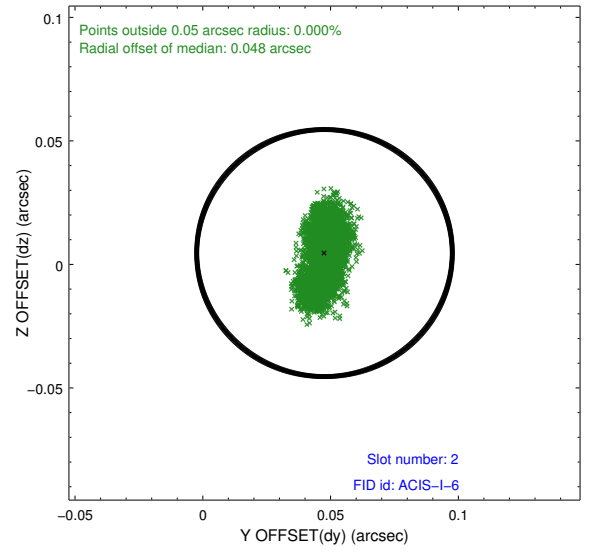
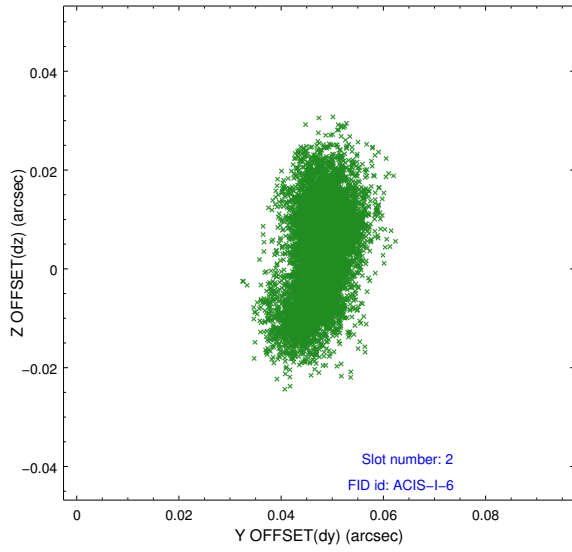
2.5.1 Slot 0



2.5.2 Slot 1



2.5.3 Slot 2



A Summary

A.1 Status

V&V Scientist	Jen Lauer
V&V Date (YYYY-MM-DD)	2012.05.22
V&V Edition	1
V&V Disposition and Status	OK
V&V Charge Time	26.1700772

A.2 Comments

Joint Proposal: Spitzer. Roll constraint met.