

V&V Reference Report

L2 ASCDS Version : 8.4.5

Observation 9906 - L2 Version 2
Chandra X-Ray Center

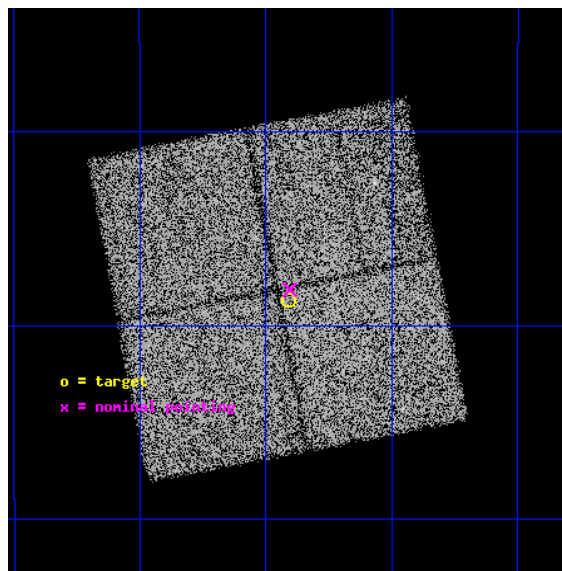
L2 Processing Date : Jun 7 2012

Contents

1	Front	2
2	OBI	3
2.1	OBI	3
2.1.1	Images	3
2.1.2	Bias	3
2.1.3	Parameters	4
2.1.4	Events	4
2.2	Compared Parameters	5
2.3	Aspect	6
2.4	Star Slots	9
2.4.1	Slot 3	9
2.4.2	Slot 4	10
2.4.3	Slot 5	11
2.4.4	Slot 6	12
2.4.5	Slot 7	13
2.5	FID Slots	14
2.5.1	Slot 0	14
2.5.2	Slot 1	15
2.5.3	Slot 2	16
A	Summary	17
A.1	Status	17
A.2	Comments	17

1 Front

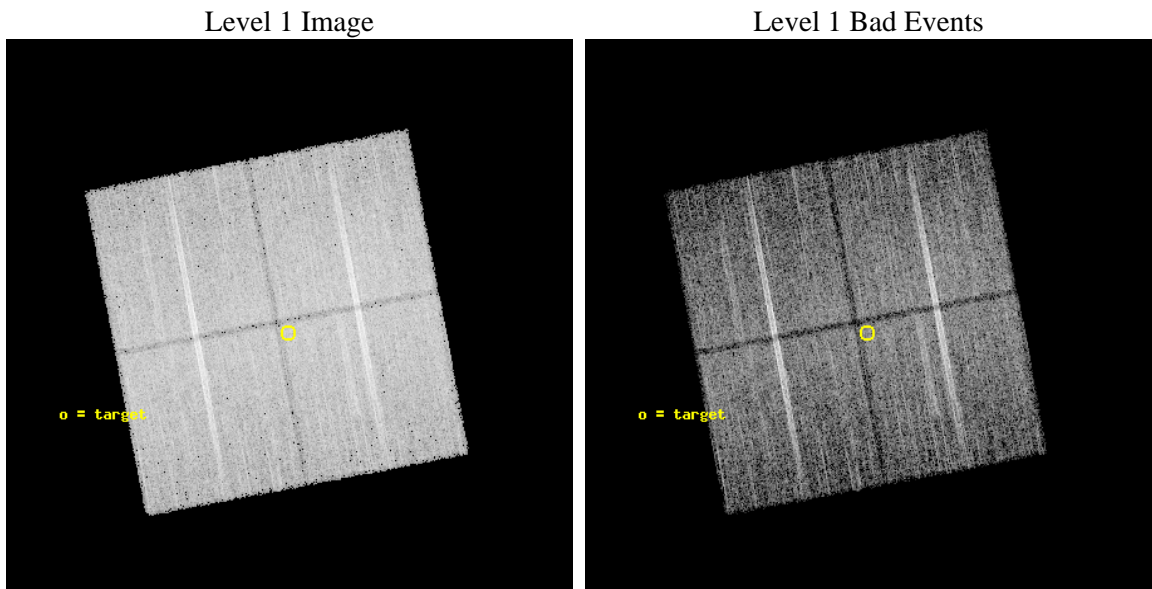
seq_num	600718	Sequence number
obs_id	9906	Observation id
title	Completing the Galactic Bulge Latitude Survey (BLS)	Proposal title
observer	Professor Johnathan Grindlay	Principal investigator
object	GBW32	Source name
dtycycle	0	
cycle	P	events from which exps? Prim/Second/Both
ra_targ	265.102083	Observer's specified target RA [deg]
dec_targ	-28.477361	Observer's specified target Dec [deg]
ra_nom	265.10106288215	Nominal RA [deg]
dec_nom	-28.469351353771	Nominal Dec [deg]
roll_nom	79.208204545305	Nominal Roll [deg]
revision	2	Processing version of data
ontime	14796.300113797	Sum of GTIs [s]
livetime	14602.975559933	Livetime [s]
ontime0	14793.159123421	Sum of GTIs [s]
ontime1	14796.300113797	Sum of GTIs [s]
ontime2	14796.300113797	Sum of GTIs [s]
ontime3	14796.300113797	Sum of GTIs [s]
l2events	73627	Number of level 2 events



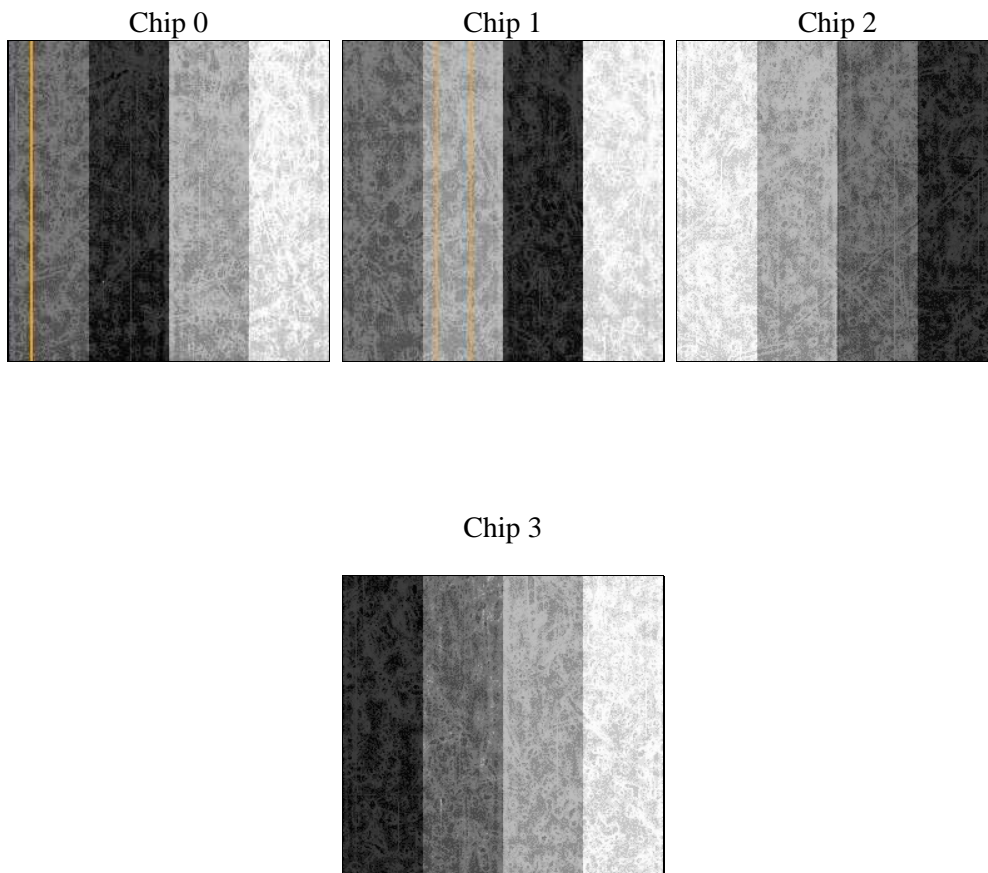
2 OBI

2.1 OBI

2.1.1 Images



2.1.2 Bias



2.1.3 Parameters

obi_num	0	Obi number	sched_exp_time	15005.673000	[s] Scheduled observation exposure time
ascdsver	8.4.5	Processing system revision	ontime	14796.300113797	Sum of GTIs [s]
caldsver	4.4.10	 	ontime0	14793.159123421	Sum of GTIs [s]
date	2012-06-07T15:36:18	Date and time of file creation	ontime1	14796.300113797	Sum of GTIs [s]
revision	2	Processing version of data	ontime2	14796.300113797	Sum of GTIs [s]
			ontime3	14796.300113797	Sum of GTIs [s]
			l1events	594922	Number of level 1 events

2.1.4 Events

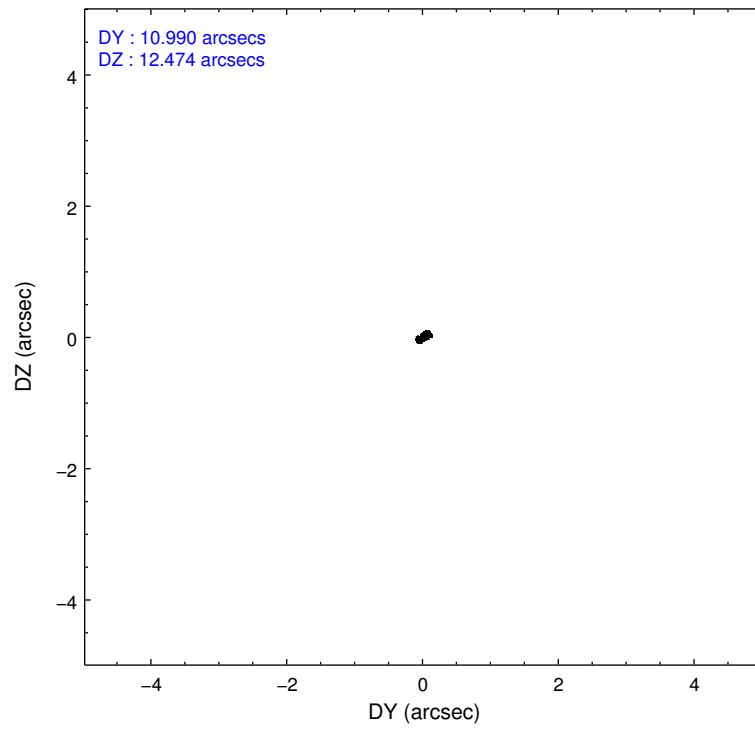
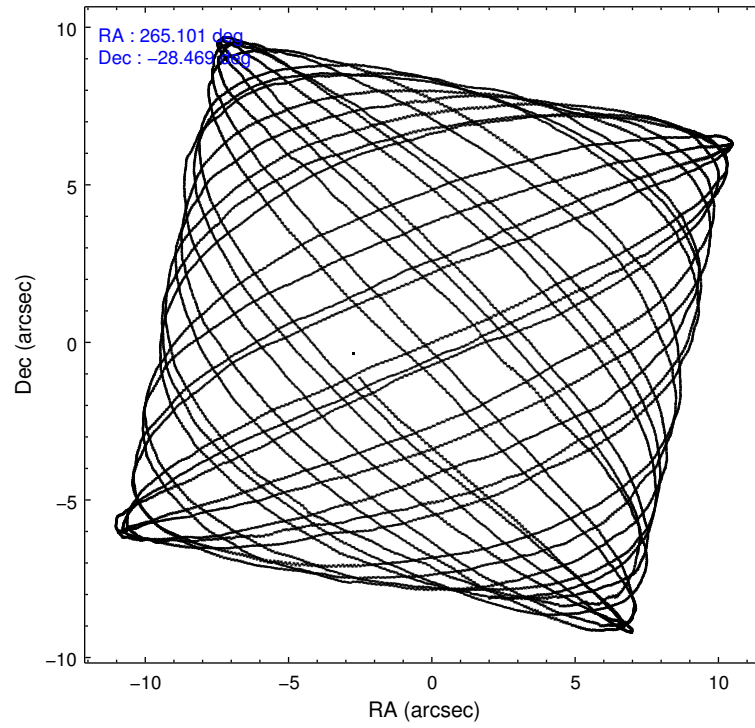
	ccd 0	ccd 1	ccd 2	ccd 3
level 1 events	141442	144622	155093	153765
rejected events	120069	122592	134710	132770
rejected %	84%	84%	86%	86%

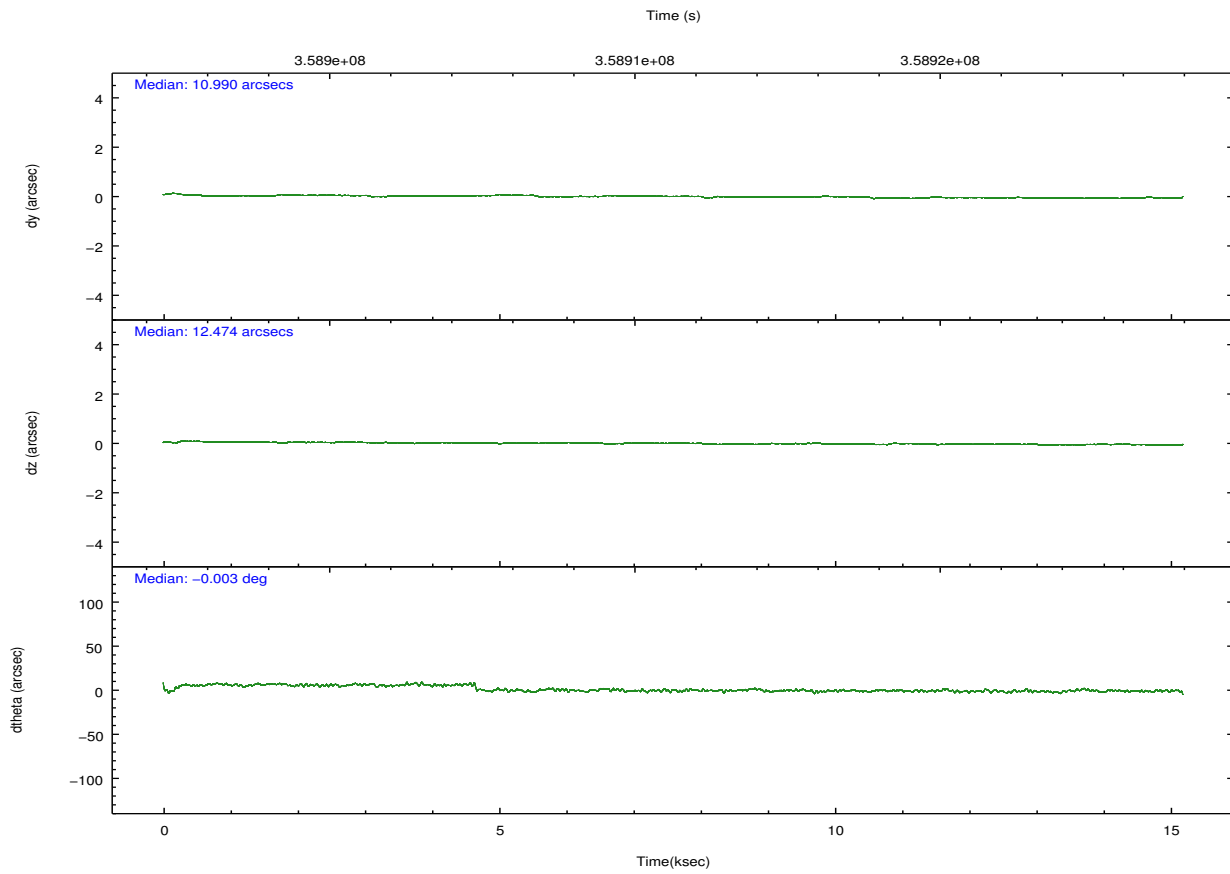
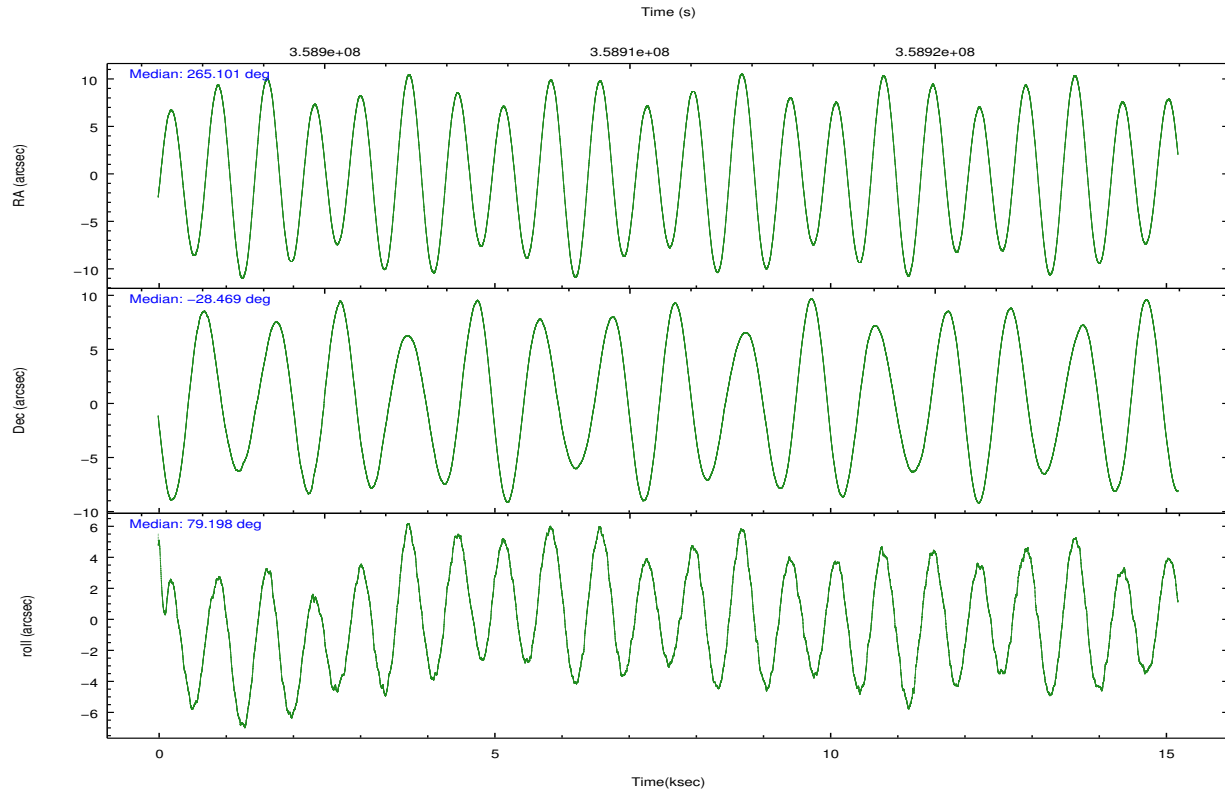
	ccd 0	ccd 1	ccd 2	ccd 3
grade 0 events	9803	9101	9329	9748
	6%	6%	6%	6%
grade 1 events	95	92	108	128
	0%	0%	0%	0%
grade 2 events	4567	4980	4300	4011
	3%	3%	2%	2%
grade 3 events	1823	1933	1815	1869
	1%	1%	1%	1%
grade 4 events	1747	1906	1794	1883
	1%	1%	1%	1%
grade 5 events	6513	7048	6389	7467
	4%	4%	4%	4%
grade 6 events	3444	4117	3154	3495
	2%	2%	2%	2%
grade 7 events	113450	115445	128204	125164
	80%	79%	82%	81%

2.2 Compared Parameters

Parameter	Planned	Actual	Parameter	Planned	Actual
Instrument	ACIS	ACIS	Obspar format version number	7	7
Detector	ACIS-0123	ACIS-0123	Obspar file type	PREDICTED	ACTUAL
Grating	NONE	NONE	Obspar update status	NONE	UPDATED
Data mode	VFAINT	VFAINT	Number of optional ACIS chips dropped	0	0
Observation mode	POINTING	POINTING	On-chip summing requested	N	N
[deg] Pointing RA	265.111455	265.1010628821519	Subarray requested	NONE	NONE
[deg] Pointing Dec	-28.495262	-28.46935135377114	Alternating exposures requested	N	N
[deg] Pointing Roll	79.004482	79.20820454530539	[s] Primary exposure time	0.000000	3.1
[mm] SIM focus pos	-0.782348	-0.7809083437167272			
[mm] SIM defocus	0	0.001439871863259334			
[mm] SIM translation stage pos	-233.592463	-233.5874344608287			
[mm] SIM translation stage offset	0	-0.005018542100998502			
[s] Observation start time (MET)	358903206.184000	358902829.5686			
Observation start date	2009-05-16T23:19:00	2009-05-16T23:13:49			
[s] Observation end time (MET)	358918211.184000	358918448.51938			
Observation end date	2009-05-17T03:29:05	2009-05-17T03:34:08			
Read mode	TIMED	TIMED			

2.3 Aspect



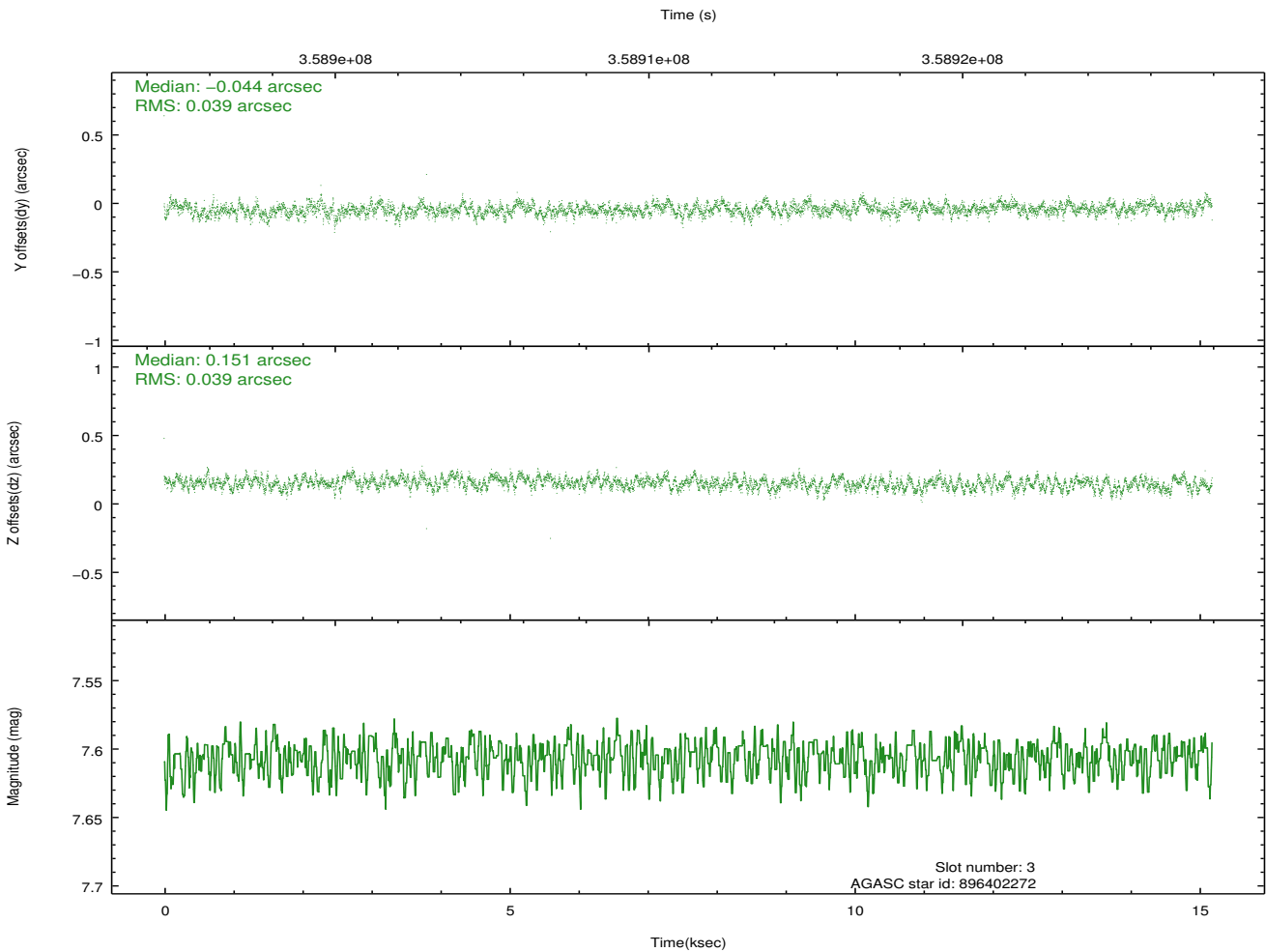
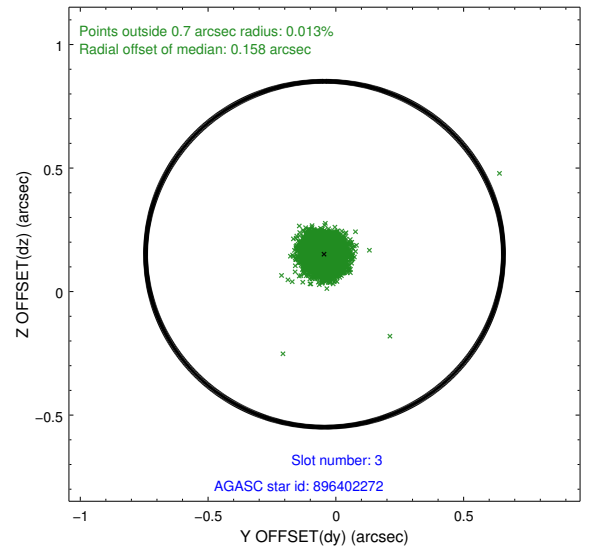
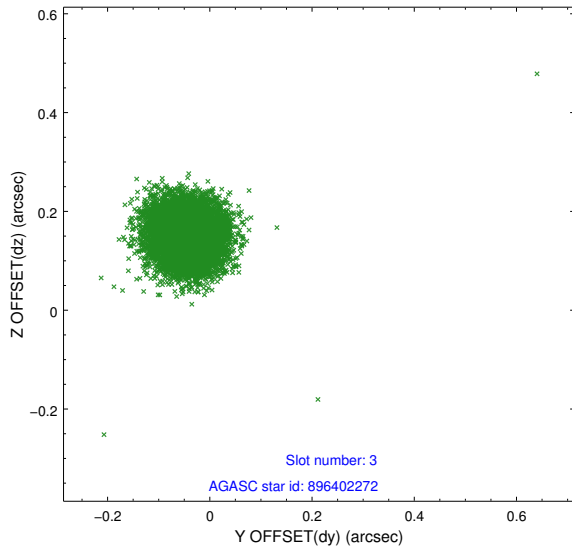


Slot Statistics

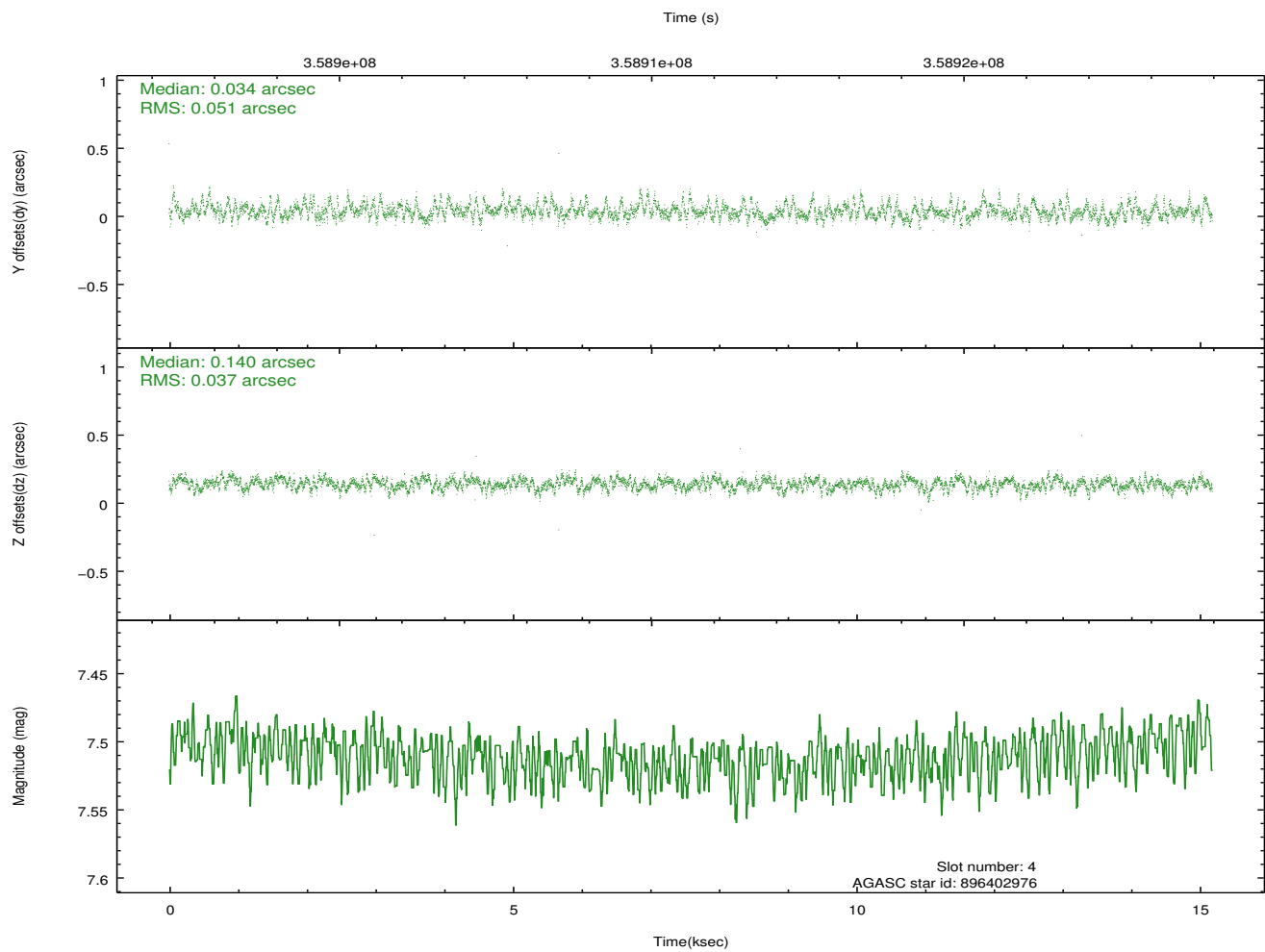
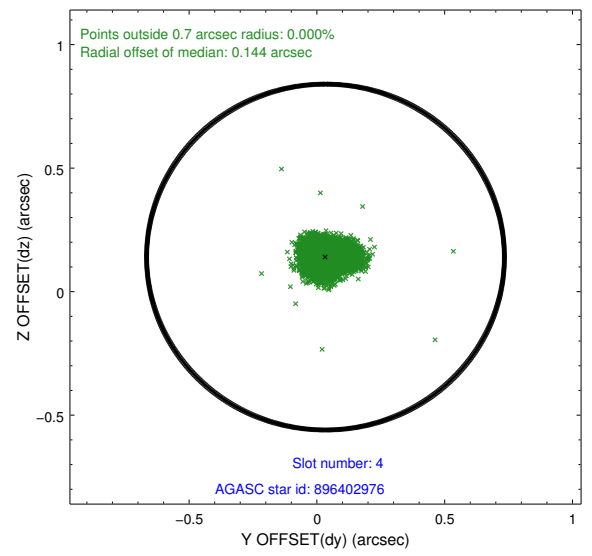
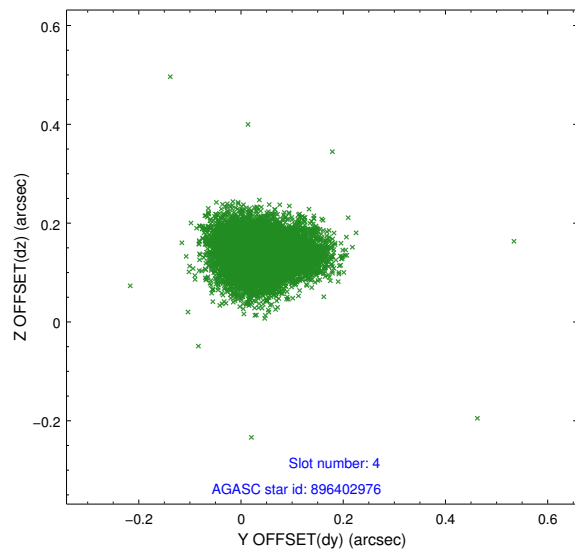
slot	status	id	mag	n_pts	med_dy	med_dz	dr1	dr2	ra	dec	mean_y	mean_z
0	FID	ACIS-I-1	7.10	3704	-0.020	0.004	0.023	0.048	0.000000	0.000000	928.57	-835.99
1	FID	ACIS-I-2	6.99	3704	-0.188	-0.068	0.016	0.024	0.000000	0.000000	-765.52	-842.67
2	FID	ACIS-I-4	7.01	3701	0.111	0.131	0.021	0.047	0.000000	0.000000	2148.44	1063.78
3	GUIDE	896402272	7.61	7409	-0.044	0.151	0.059	0.091	265.637294	-28.313189	958.27	-1511.09
4	GUIDE	896402976	7.51	7409	0.034	0.140	0.065	0.110	265.099474	-28.923203	-1519.00	-256.91
5	GUIDE	896404568	7.86	7405	-0.035	0.142	0.059	0.096	265.687293	-28.431080	570.62	-1745.84
6	GUIDE	896405976	9.10	7402	0.046	-0.148	0.074	0.120	264.638127	-28.604395	-673.75	1392.76
7	GUIDE	896406568	8.26	7404	-0.005	-0.284	0.074	0.120	264.435951	-28.437282	-209.07	2137.88

2.4 Star Slots

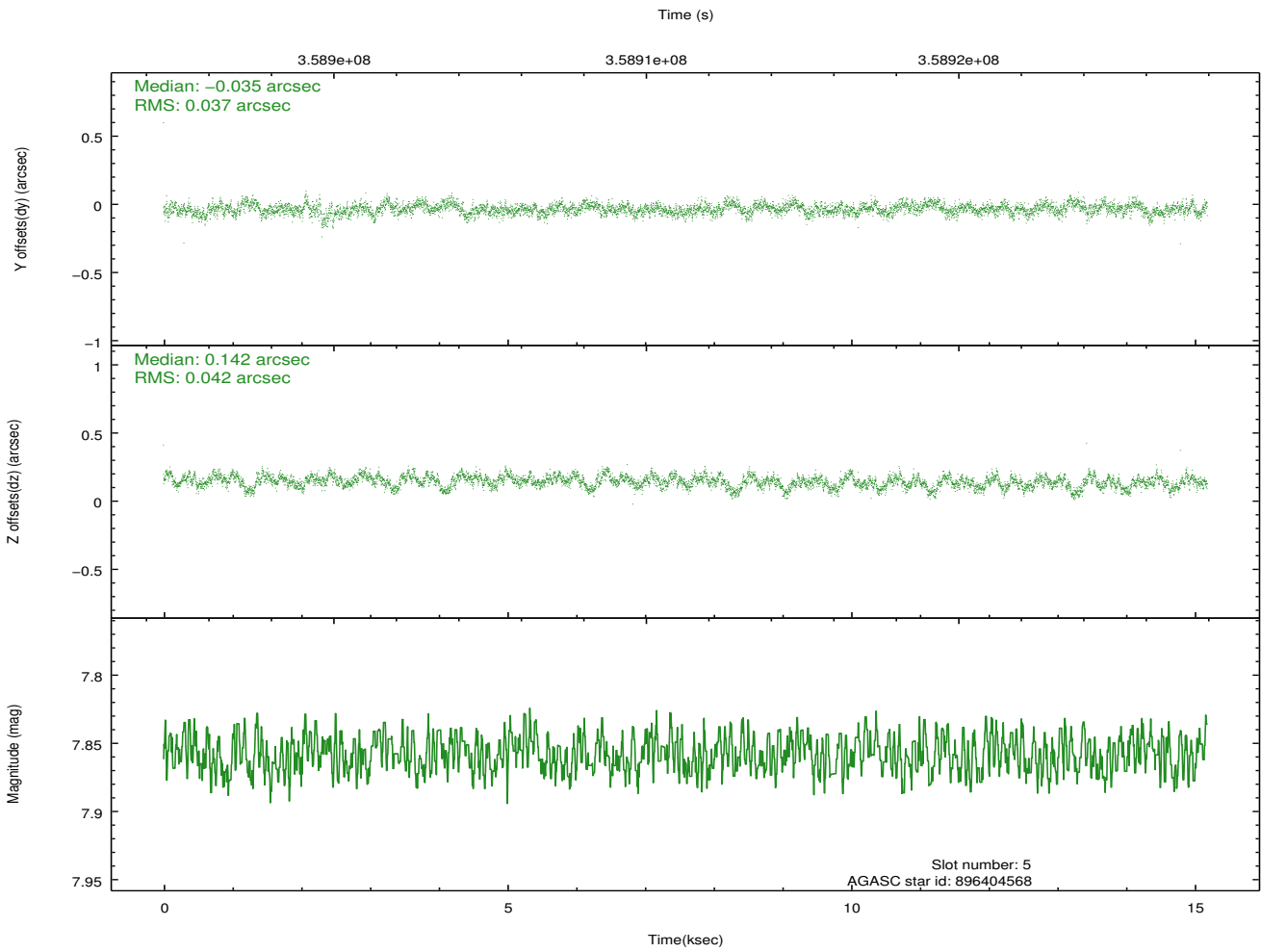
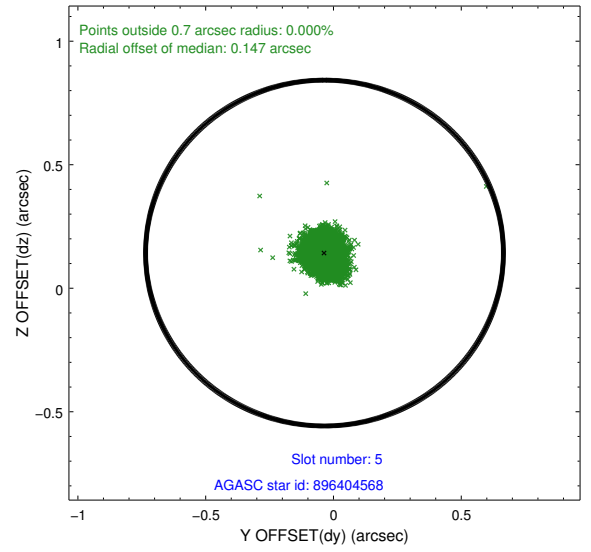
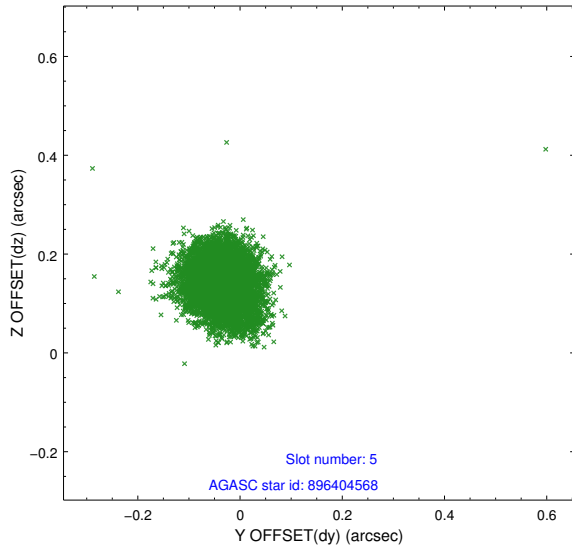
2.4.1 Slot 3



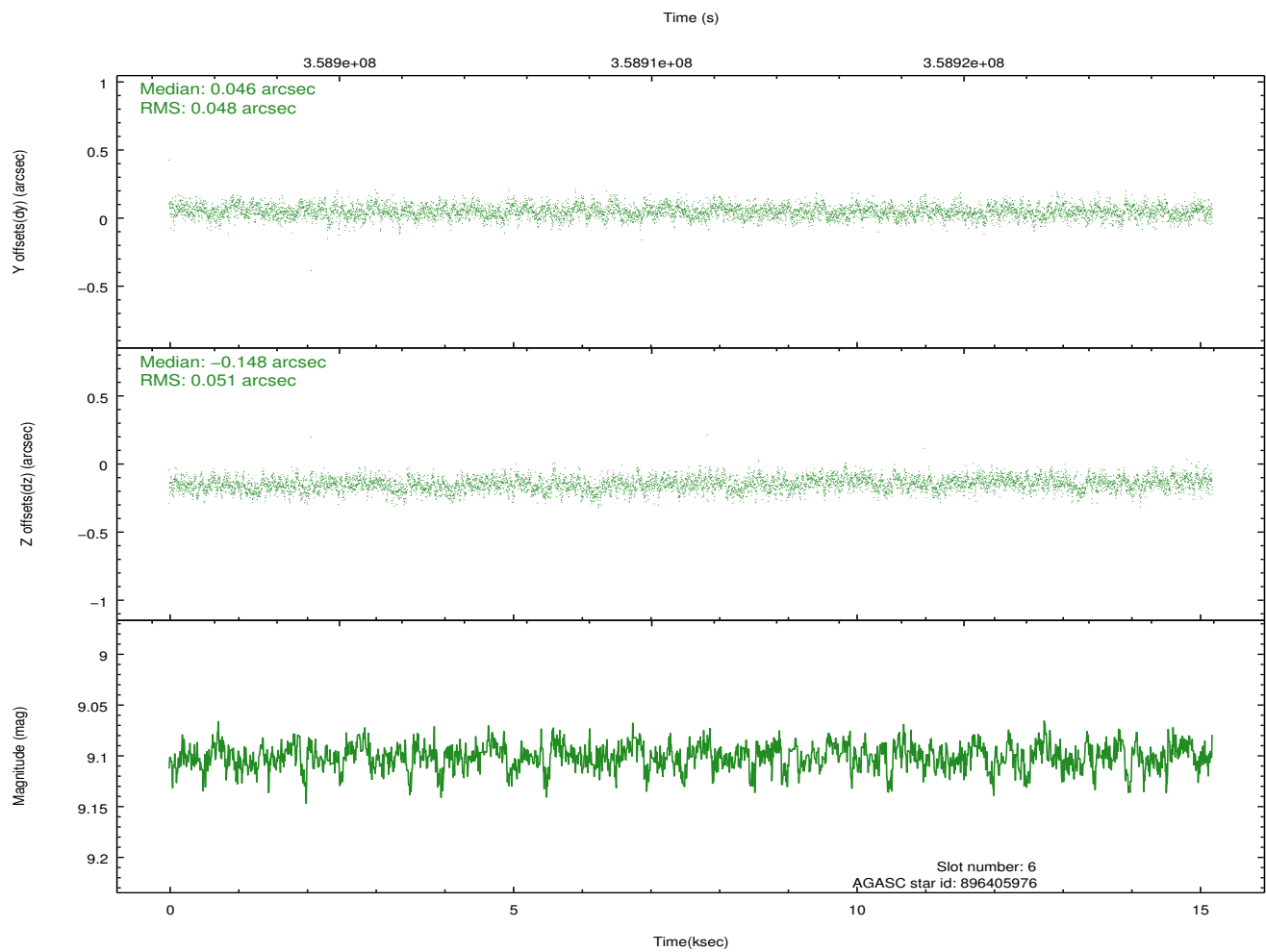
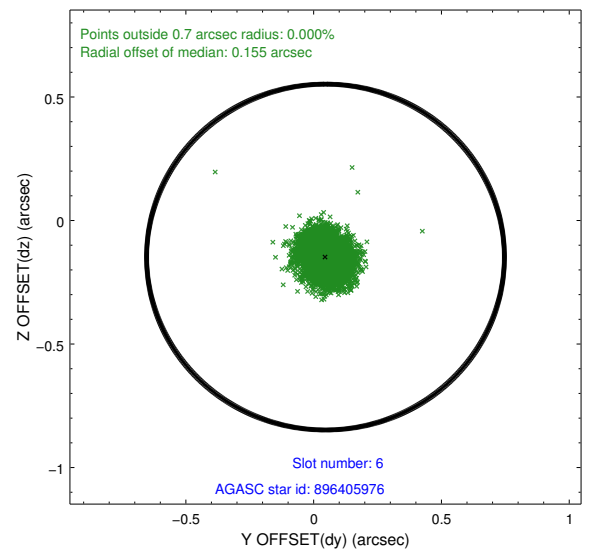
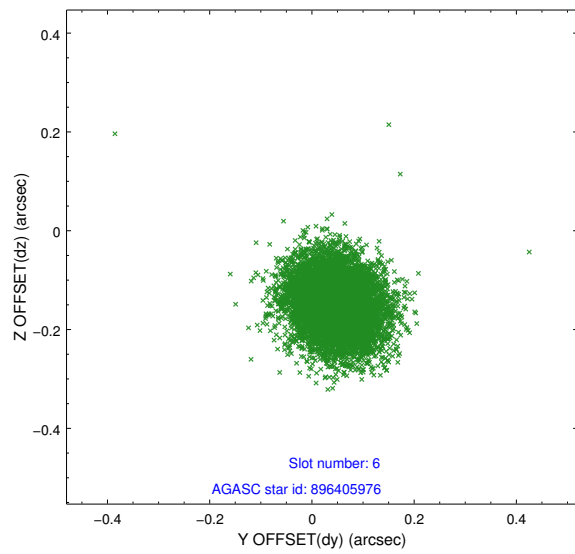
2.4.2 Slot 4



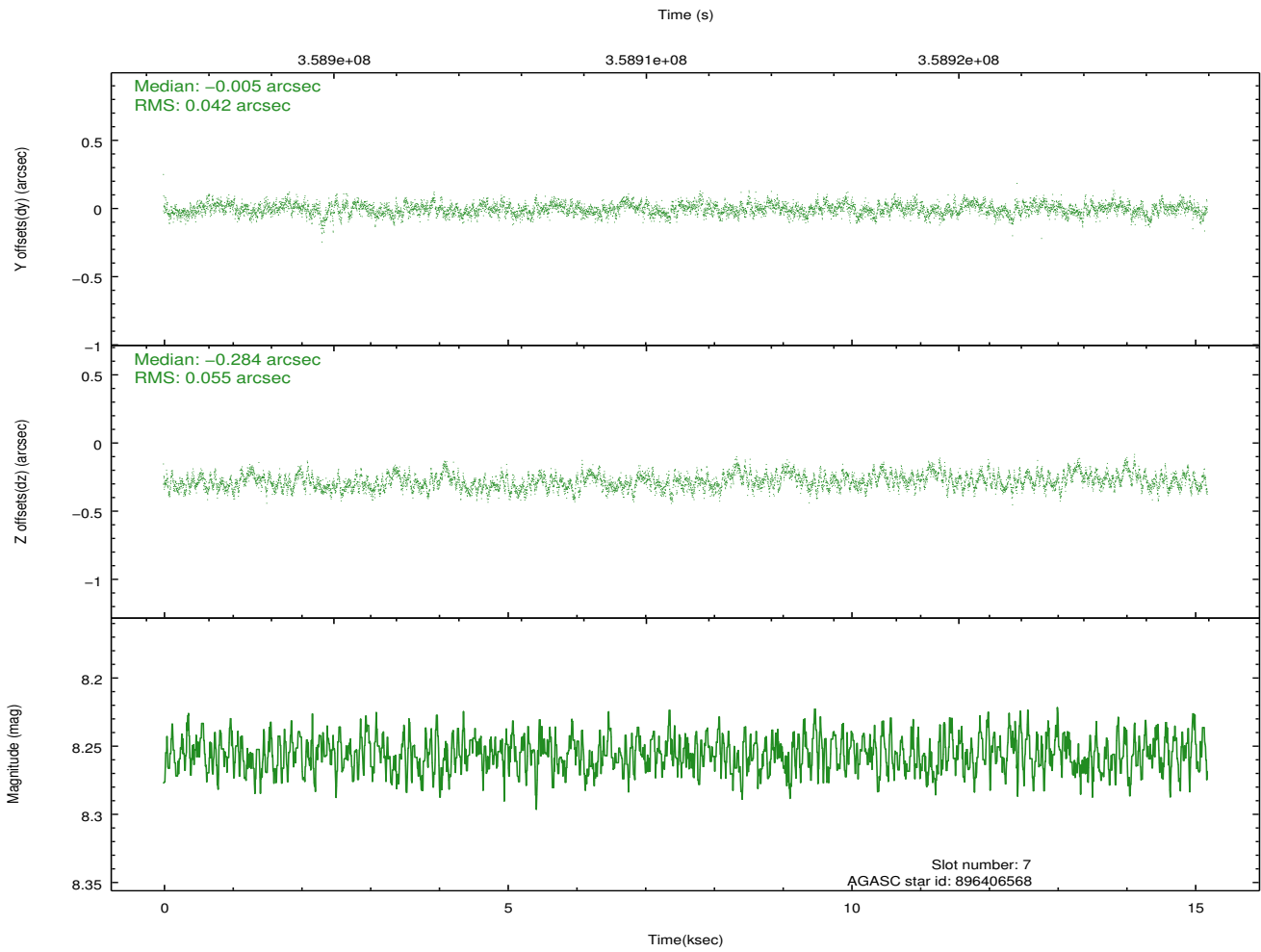
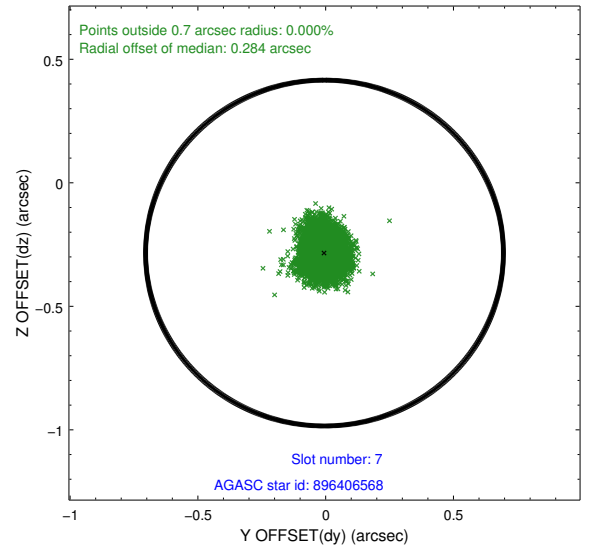
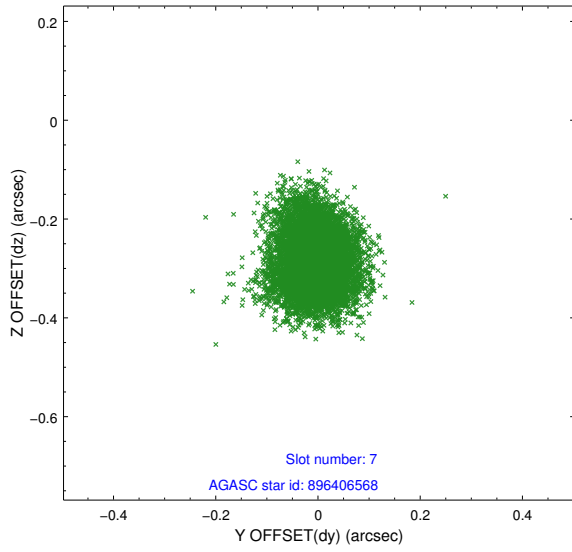
2.4.3 Slot 5



2.4.4 Slot 6

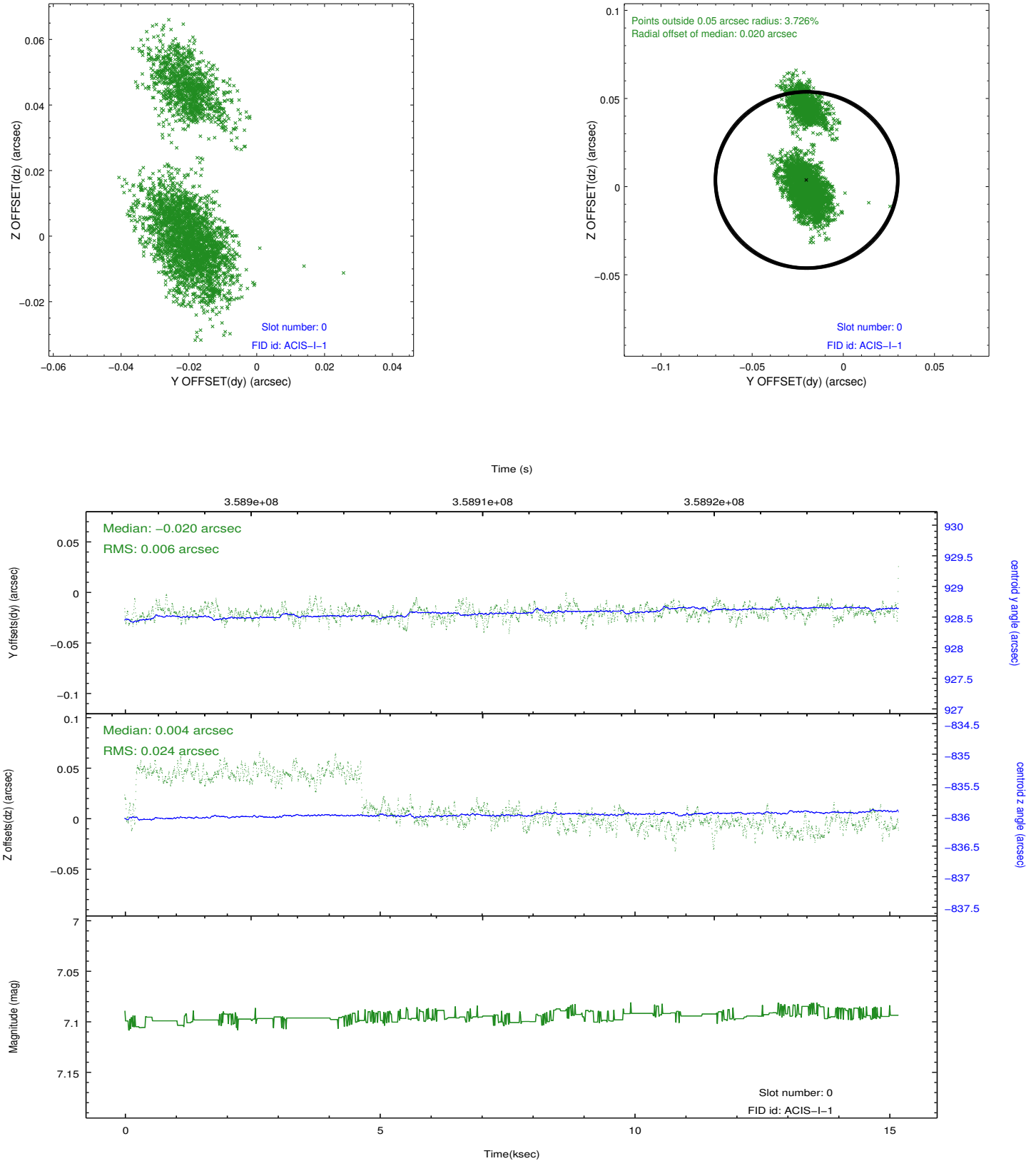


2.4.5 Slot 7

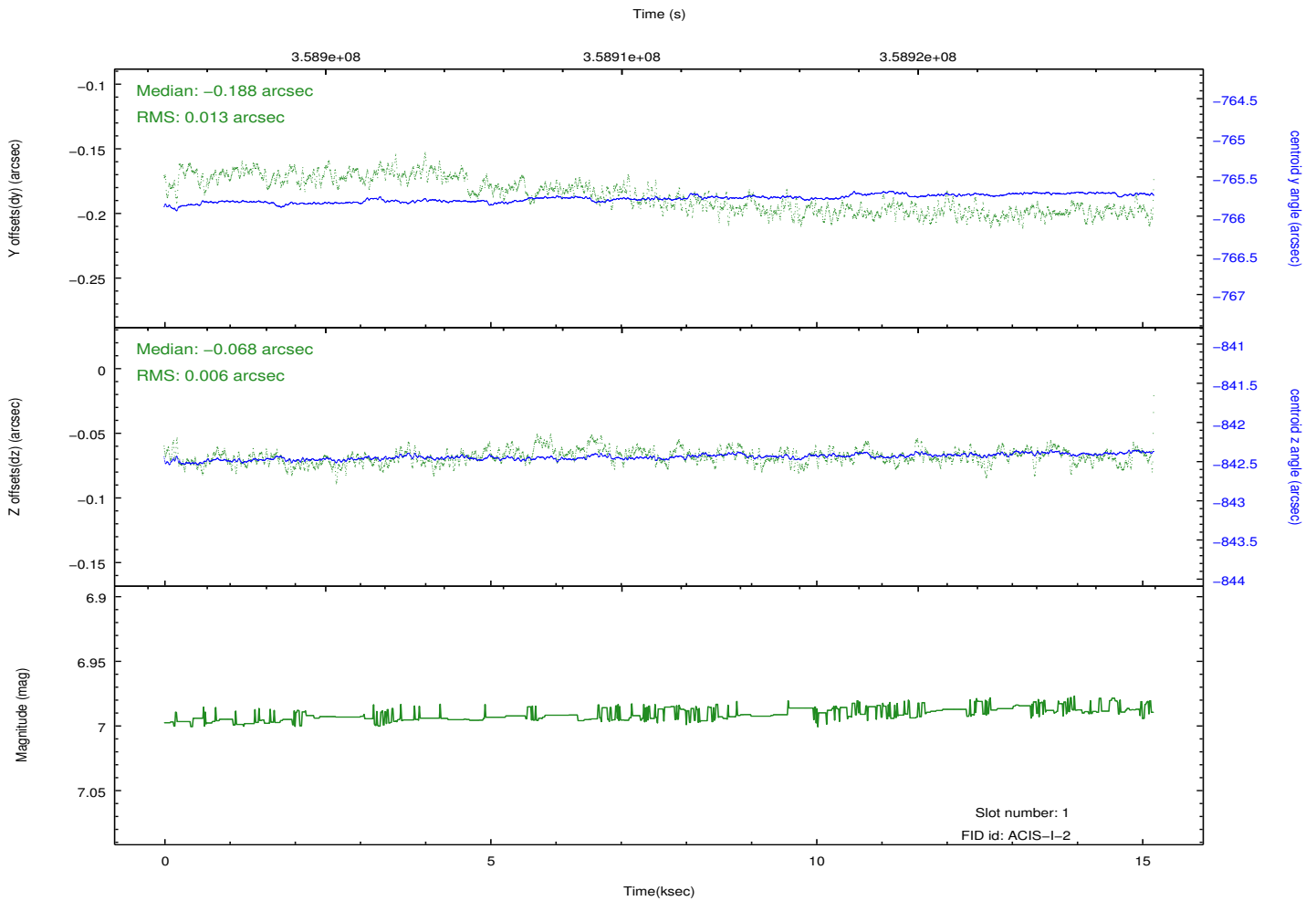
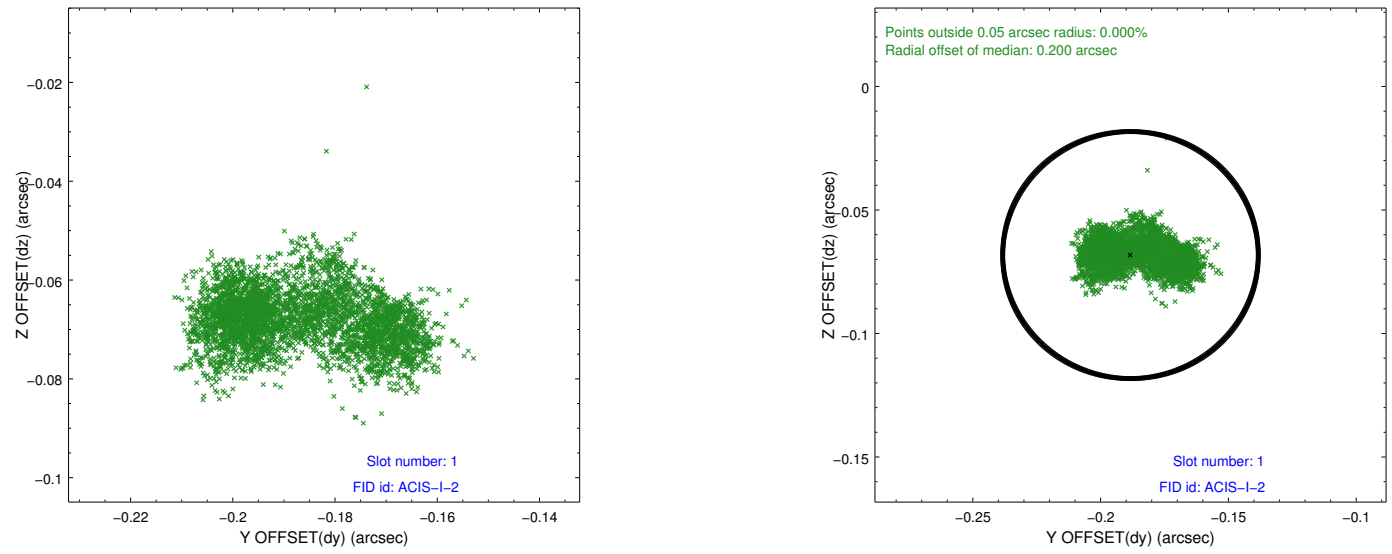


2.5 FID Slots

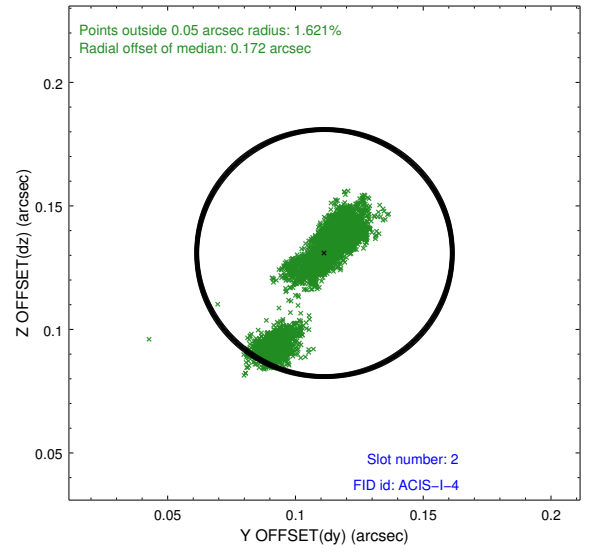
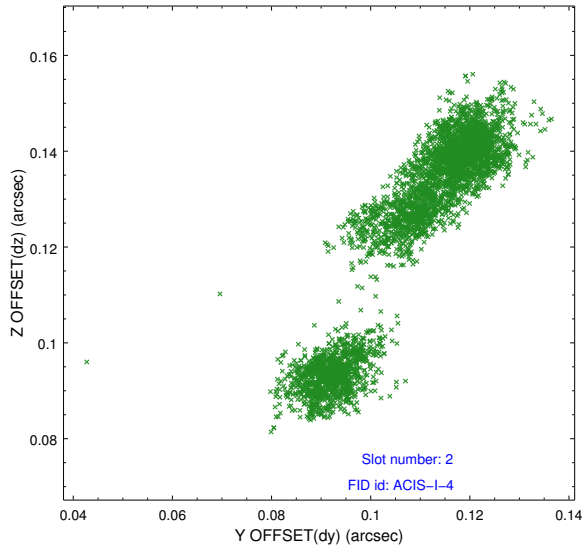
2.5.1 Slot 0



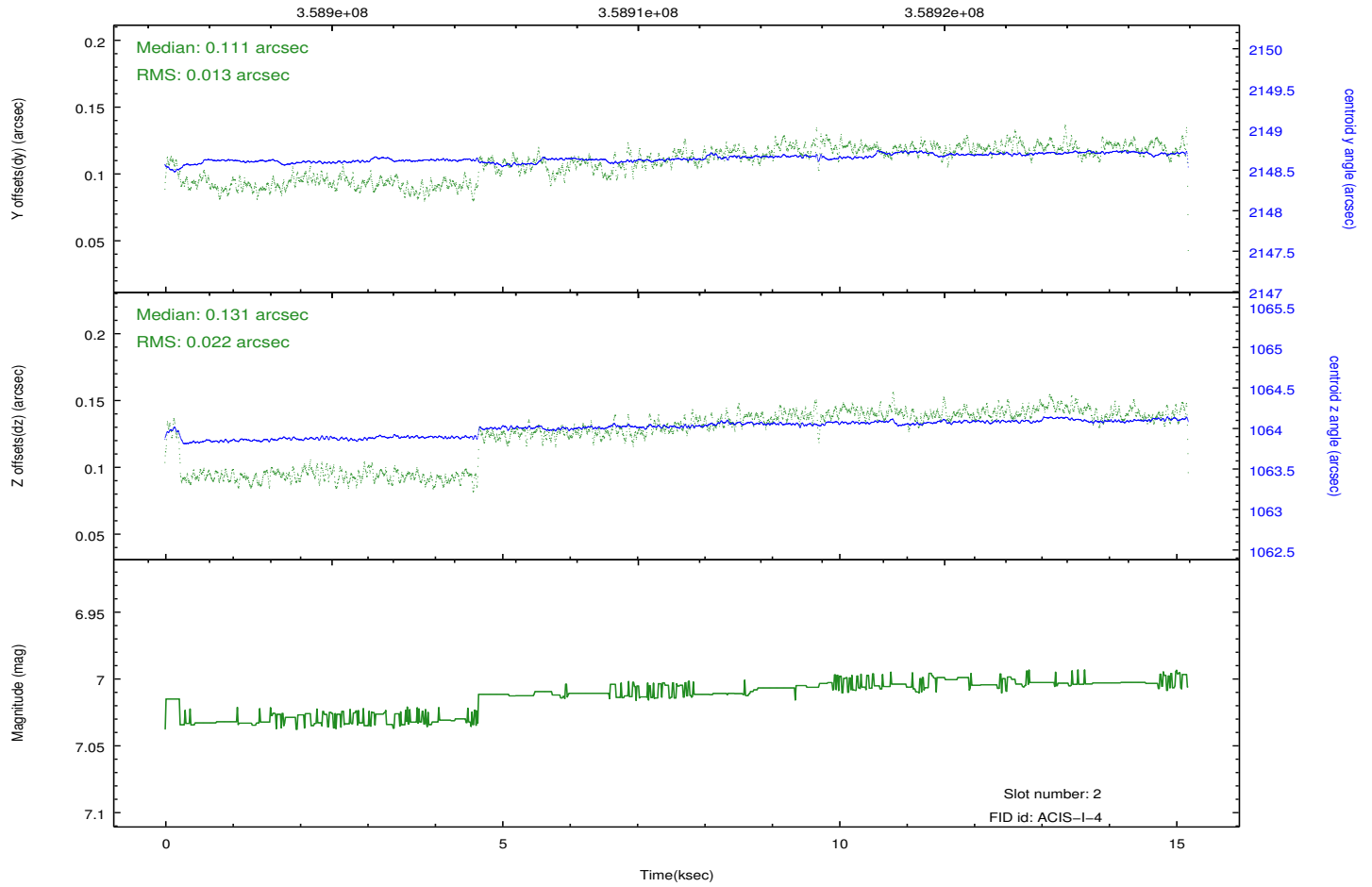
2.5.2 Slot 1



2.5.3 Slot 2



Time (s)



A Summary

A.1 Status

V&V Scientist	Beth Sundheim
V&V Date (YYYY-MM-DD)	2012.06.11
V&V Edition	1
V&V Disposition and Status	OK
V&V Charge Time	14.7963001

A.2 Comments

Joint proposal with NOAO.