

# V&V Reference Report

## L2 ASCDS Version : 8.4.5

Observation 10067 - L2 Version 2  
Chandra X-Ray Center

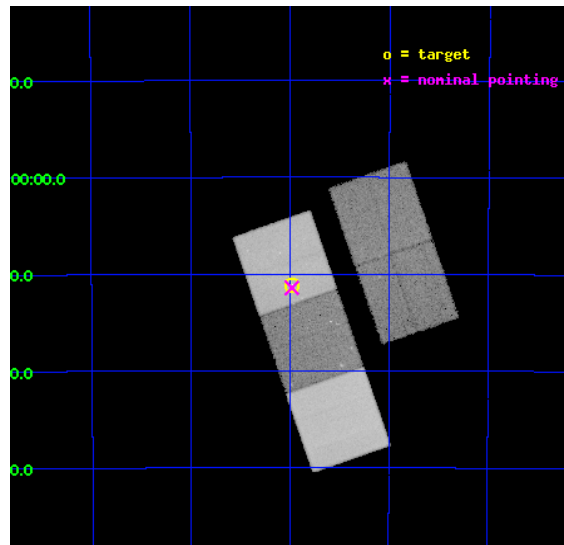
L2 Processing Date : Jun 15 2012

## Contents

<b>1</b>	<b>Front</b>	<b>2</b>
<b>2</b>	<b>OBI</b>	<b>3</b>
2.1	OBI . . . . .	3
2.1.1	Images . . . . .	3
2.1.2	Bias . . . . .	3
2.1.3	Parameters . . . . .	4
2.1.4	Events . . . . .	4
2.2	Compared Parameters . . . . .	5
2.3	Aspect . . . . .	6
2.4	Star Slots . . . . .	9
2.4.1	Slot 3 . . . . .	9
2.4.2	Slot 4 . . . . .	10
2.4.3	Slot 5 . . . . .	11
2.4.4	Slot 6 . . . . .	12
2.4.5	Slot 7 . . . . .	13
2.5	FID Slots . . . . .	14
2.5.1	Slot 0 . . . . .	14
2.5.2	Slot 1 . . . . .	15
2.5.3	Slot 2 . . . . .	16
<b>A</b>	<b>Summary</b>	<b>17</b>
A.1	Status . . . . .	17
A.2	Comments . . . . .	17

# 1 Front

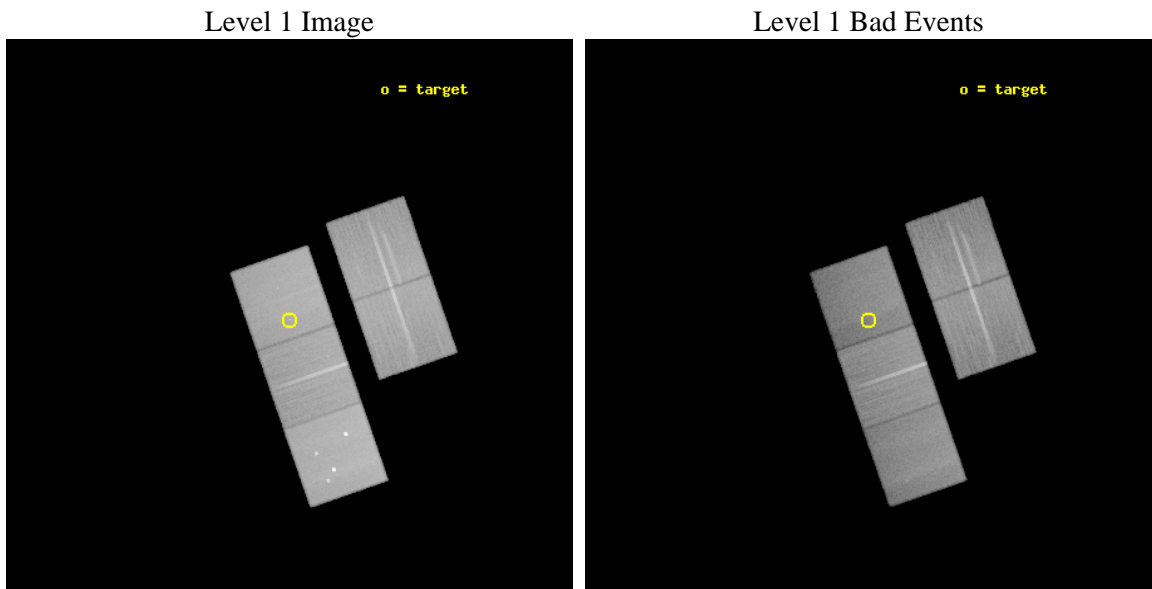
seq_num	401031	Sequence number
obs_id	10067	Observation id
title	The cooling neutron star in the super-Eddington accretor XTE J1701-462	Proposal title
observer	Dr Jeroen Homan	Principal investigator
object	XTE J1701-462	Source name
dtcycle	0	&#160
cycle	P	events from which exps? Prim/Second/Both
ra_targ	255.24375	Observer's specified target RA [deg]
dec_targ	-46.185722	Observer's specified target Dec [deg]
ra_nom	255.24526653991	Nominal RA [deg]
dec_nom	-46.190444680872	Nominal Dec [deg]
roll_nom	250.85772868747	Nominal Roll [deg]
revision	2	Processing version of data
ontime	44140.900339484	Sum of GTIs [s]
livetime	43564.166980491	Livetime [s]
ontime2	44137.759369135	Sum of GTIs [s]
ontime3	44134.618388891	Sum of GTIs [s]
ontime5	44140.900339484	Sum of GTIs [s]
ontime6	44134.61840868	Sum of GTIs [s]
ontime7	44140.900339484	Sum of GTIs [s]
l2events	551509	Number of level 2 events



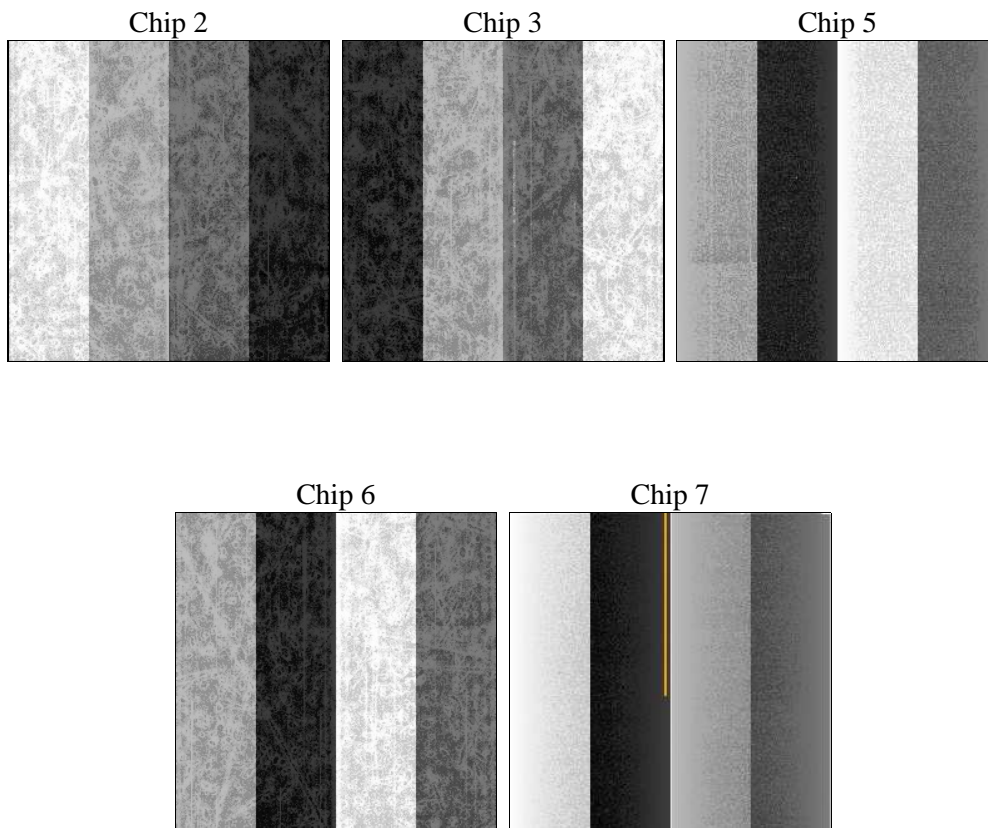
## 2 OBI

### 2.1 OBI

#### 2.1.1 Images



#### 2.1.2 Bias



### 2.1.3 Parameters

obi_num	0	Obi number	sched_exp_time	44000.000000	[s] Scheduled observation exposure time
ascdsver	8.4.5	Processing system revision	ontime	44140.900339484	Sum of GTIs [s]
caldbver	4.4.10	&#160	ontime2	44137.759369135	Sum of GTIs [s]
date	2012-06-15T14:23:50	Date and time of file creation	ontime3	44134.618388891	Sum of GTIs [s]
revision	2	Processing version of data	ontime5	44140.900339484	Sum of GTIs [s]
			ontime6	44134.61840868	Sum of GTIs [s]
			ontime7	44140.900339484	Sum of GTIs [s]
			l1events	2189785	Number of level 1 events

### 2.1.4 Events

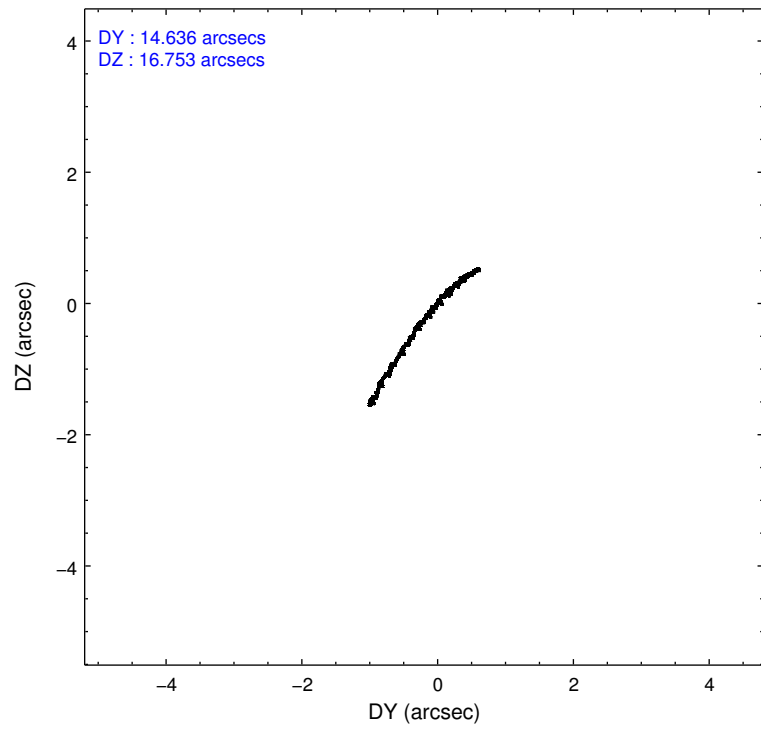
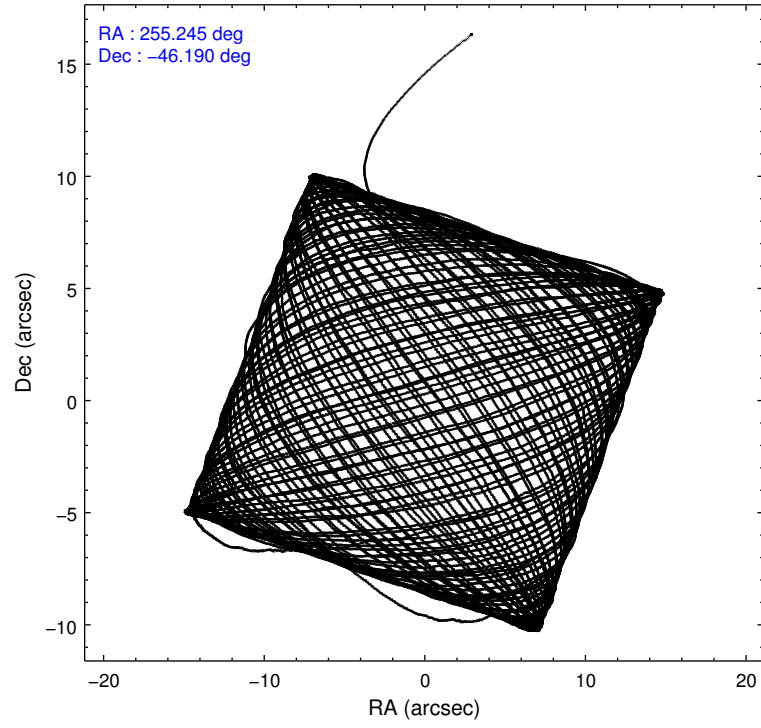
	ccd 2	ccd 3	ccd 5	ccd 6	ccd 7
level 1 events	399143	378835	568832	396582	446393
rejected events	360562	341203	283206	354519	244930
rejected %	90%	90%	49%	89%	54%

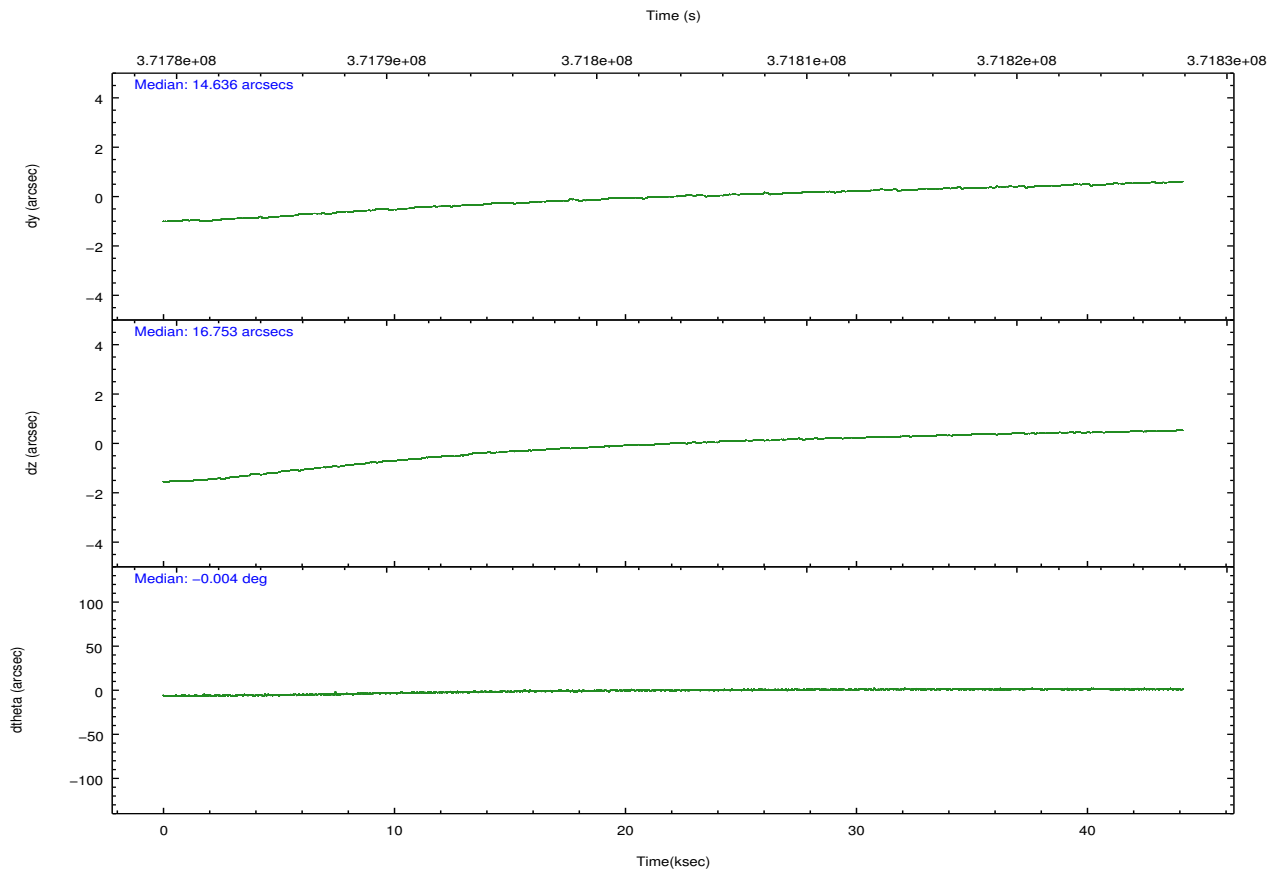
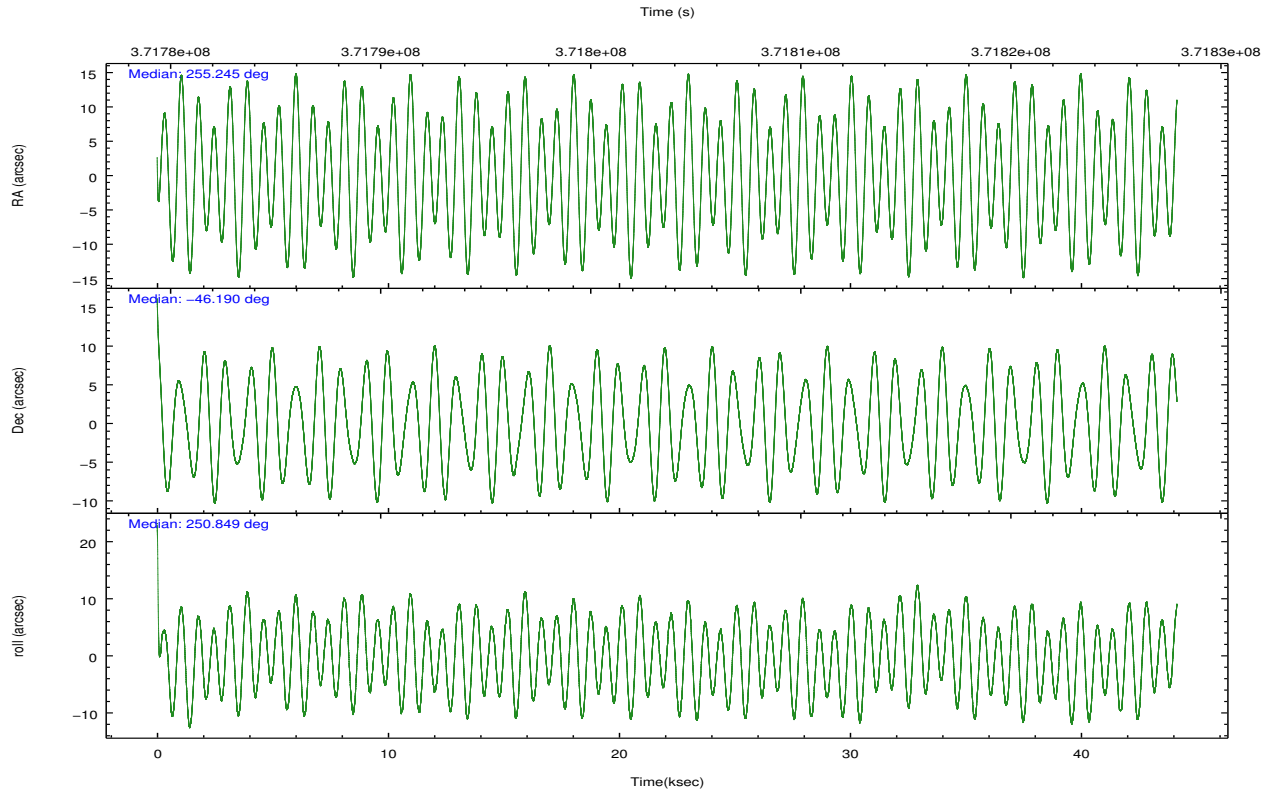
	ccd 2	ccd 3	ccd 5	ccd 6	ccd 7
grade 0 events	14142	13608	41492	15427	18865
	3%	3%	7%	3%	4%
grade 1 events	214	211	1053	241	604
	0%	0%	0%	0%	0%
grade 2 events	9402	8091	82629	9660	41911
	2%	2%	14%	2%	9%
grade 3 events	3968	4368	10665	4460	18401
	0%	1%	1%	1%	4%
grade 4 events	4190	4165	10239	4418	17997
	1%	1%	1%	1%	4%
grade 5 events	13027	16161	42573	16337	46402
	3%	4%	7%	4%	10%
grade 6 events	7224	7728	143839	8864	106257
	1%	2%	25%	2%	23%
grade 7 events	346976	324503	236342	337175	195956
	86%	85%	41%	85%	43%

## 2.2 Compared Parameters

Parameter	Planned	Actual	Parameter	Planned	Actual
Instrument	ACIS	ACIS	Obspar format version number	7	7
Detector	ACIS-23567	ACIS-23567	Obspar file type	PREDICTED	ACTUAL
Grating	NONE	NONE	Obspar update status	NONE	UPDATED
Data mode	VFAINT	VFAINT	Number of optional ACIS chips dropped	0	0
Observation mode	POINTING	POINTING	On-chip summing requested	N	N
[deg] Pointing RA	255.237309	255.2452665399124	Subarray requested	NONE	NONE
[deg] Pointing Dec	-46.163680	-46.19044468087165	Alternating exposures requested	N	N
[deg] Pointing Roll	250.695356	250.857728687473	[s] Primary exposure time	0.000000	3.1
[s] Window start time (MET)	371736066.184000	371736066.184000			
[s] Window stop time (MET)	372254466.184000	372254466.184000			
[mm] SIM focus pos	-0.684267	-0.6828225247311905			
[mm] SIM defocus	0	0.001444936568705701			
[mm] SIM translation stage pos	-190.132523	-190.1400660498719			
[mm] SIM translation stage offset	0	0.00754346686406393			
[s] Observation start time (MET)	371781701.184000	371780509.45067			
Observation start date	2009-10-13T00:40:35	2009-10-13T00:21:49			
[s] Observation end time (MET)	371825701.184000	371826665.71549			
Observation end date	2009-10-13T12:53:55	2009-10-13T13:11:05			
Read mode	TIMED	TIMED			

## 2.3 Aspect



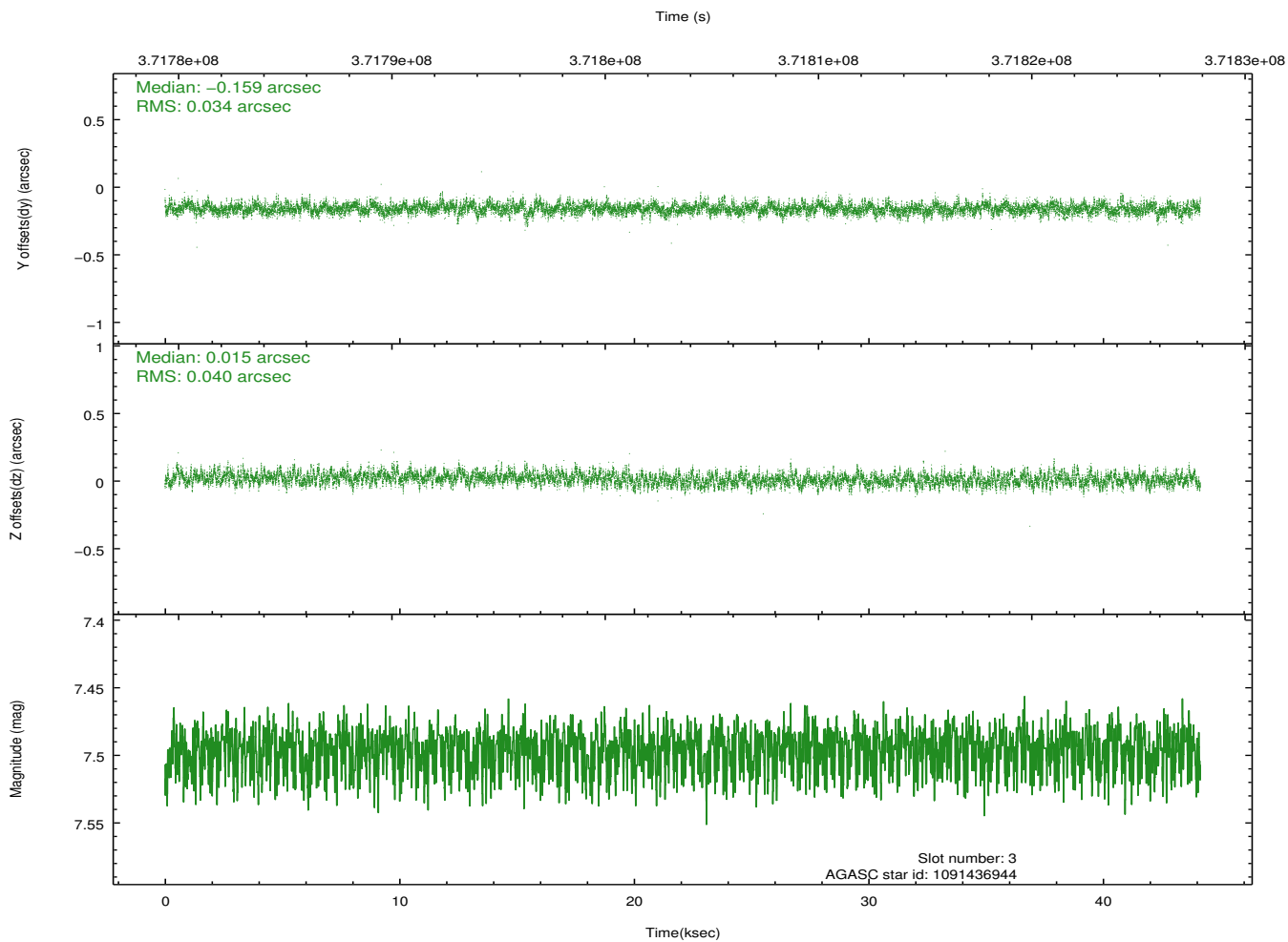
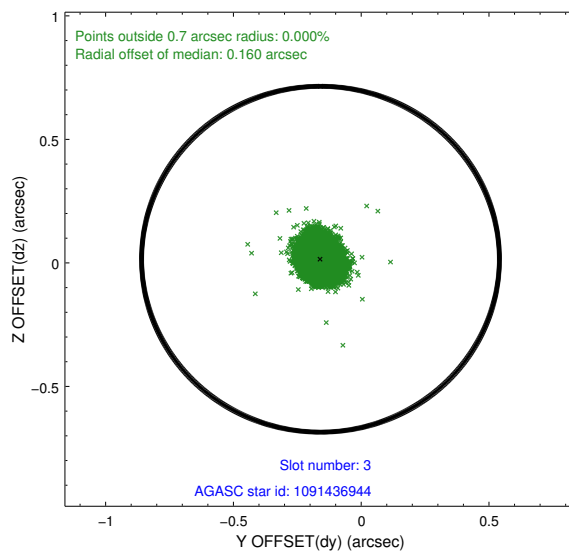
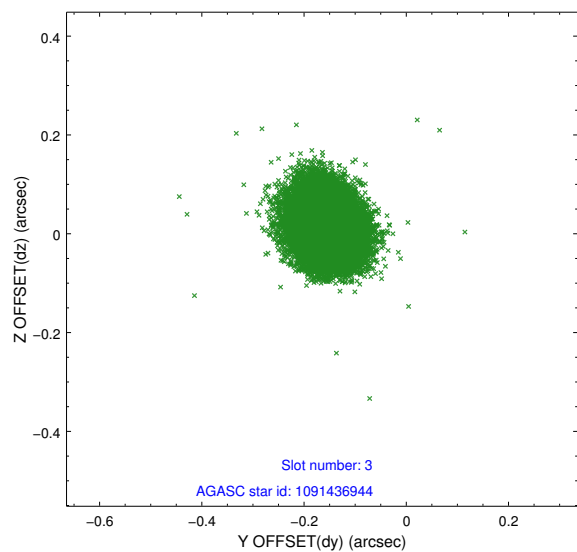


### Slot Statistics

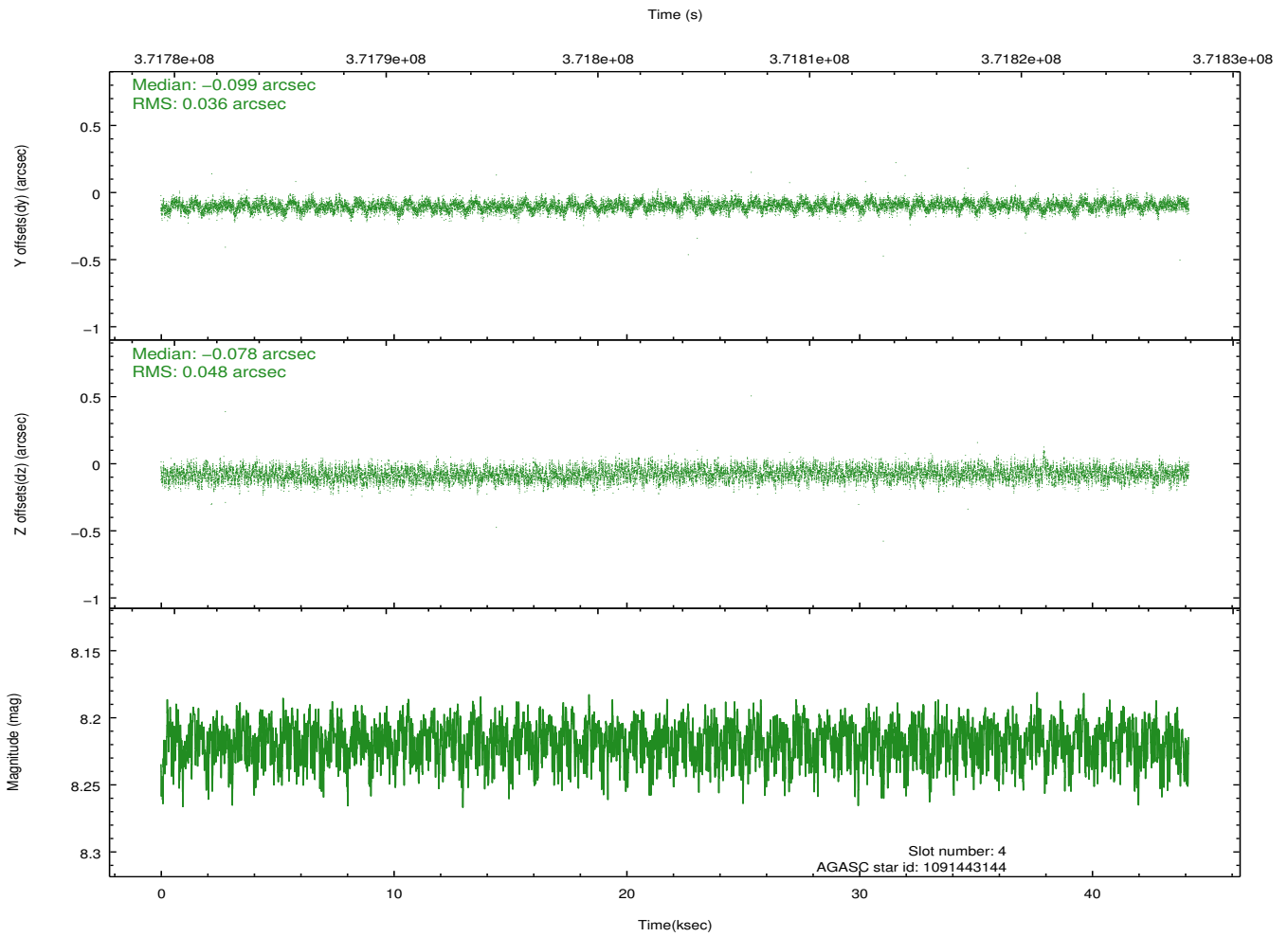
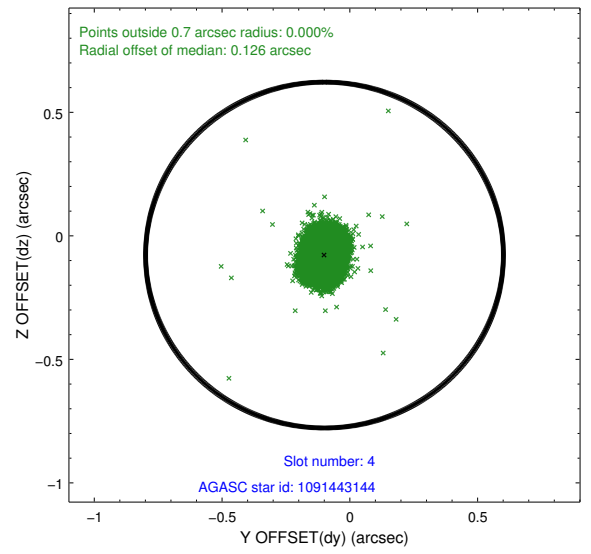
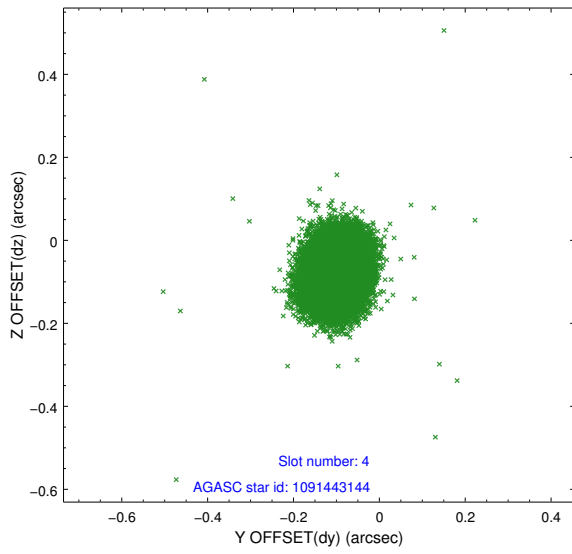
slot	status	id	mag	n_pts	med_dy	med_dz	dr1	dr2	ra	dec	mean_y	mean_z
0	FID	ACIS-S-1	6.92	10767	0.080	-0.060	0.017	0.032	0.000000	0.000000	928.59	-1733.68
1	FID	ACIS-S-5	6.96	10768	-0.141	0.049	0.020	0.026	0.000000	0.000000	-1820.60	164.02
2	FID	ACIS-S-6	7.07	10767	0.041	0.025	0.026	0.035	0.000000	0.000000	394.14	807.93
3	GUIDE	1091436944	7.50	21536	-0.159	0.015	0.056	0.091	255.747540	-46.187588	-335.20	1230.17
4	GUIDE	1091443144	8.22	21530	-0.099	-0.078	0.063	0.102	254.556494	-45.731344	-895.81	-2126.63
5	GUIDE	1091447448	8.17	21529	0.116	0.043	0.079	0.126	254.918350	-46.482919	1348.11	-365.34
6	GUIDE	1091446248	8.67	21519	0.248	-0.173	0.082	0.129	254.157495	-46.281563	1307.07	-2388.89
7	GUIDE	1091439576	8.93	21458	-0.107	0.197	0.077	0.125	255.346021	-45.503499	-2333.07	-526.75

## 2.4 Star Slots

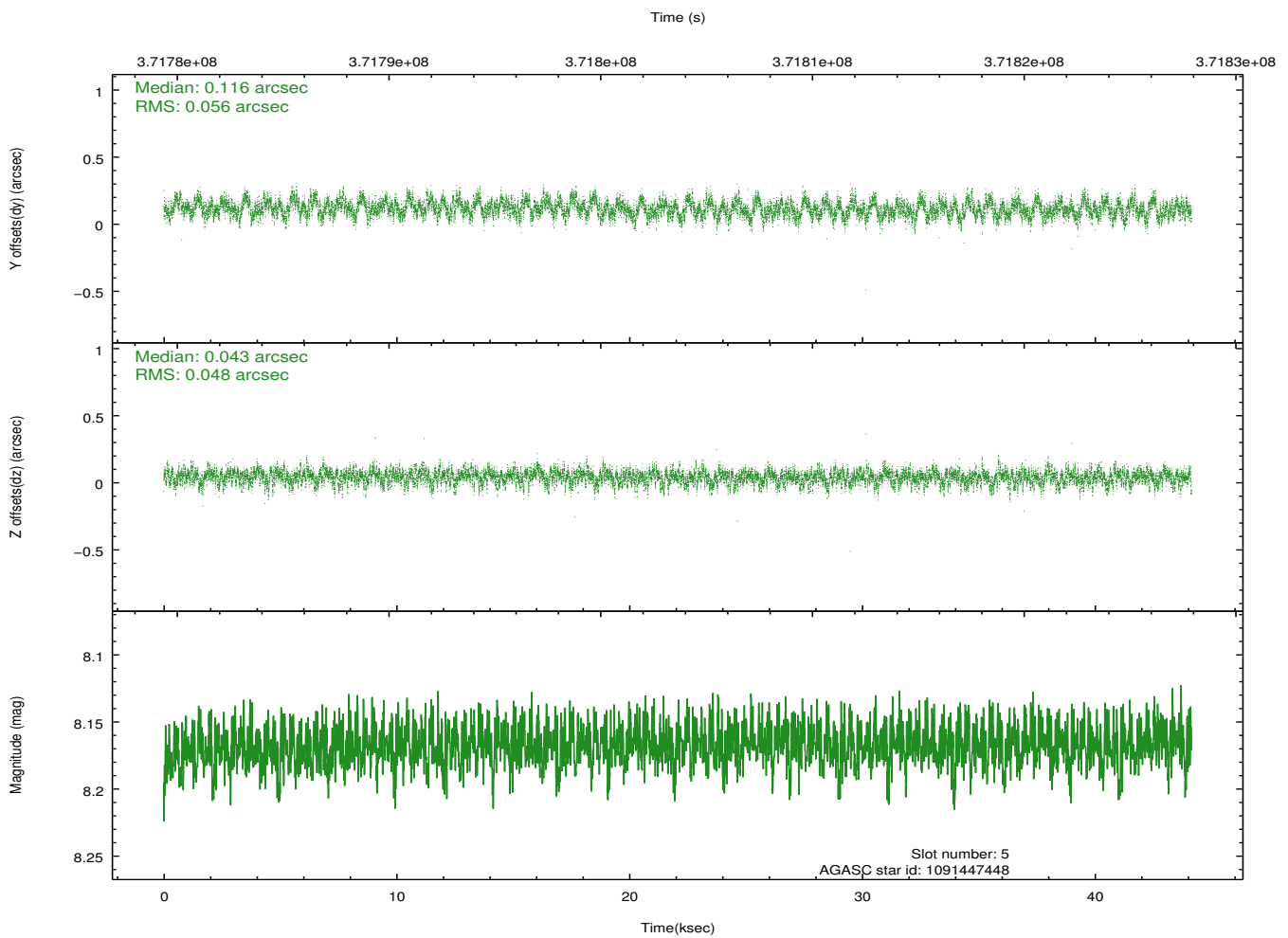
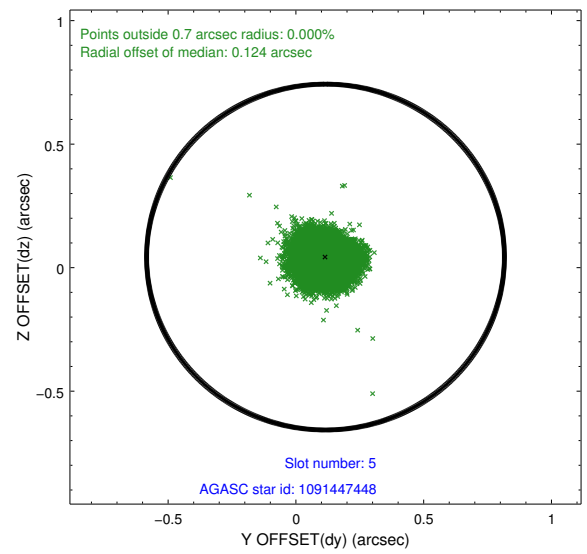
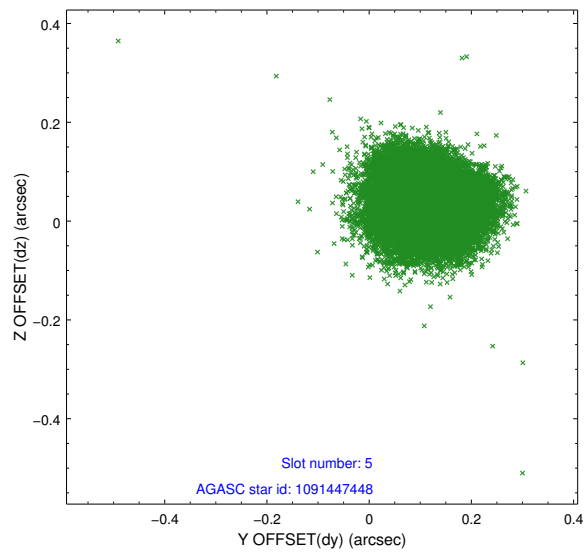
### 2.4.1 Slot 3



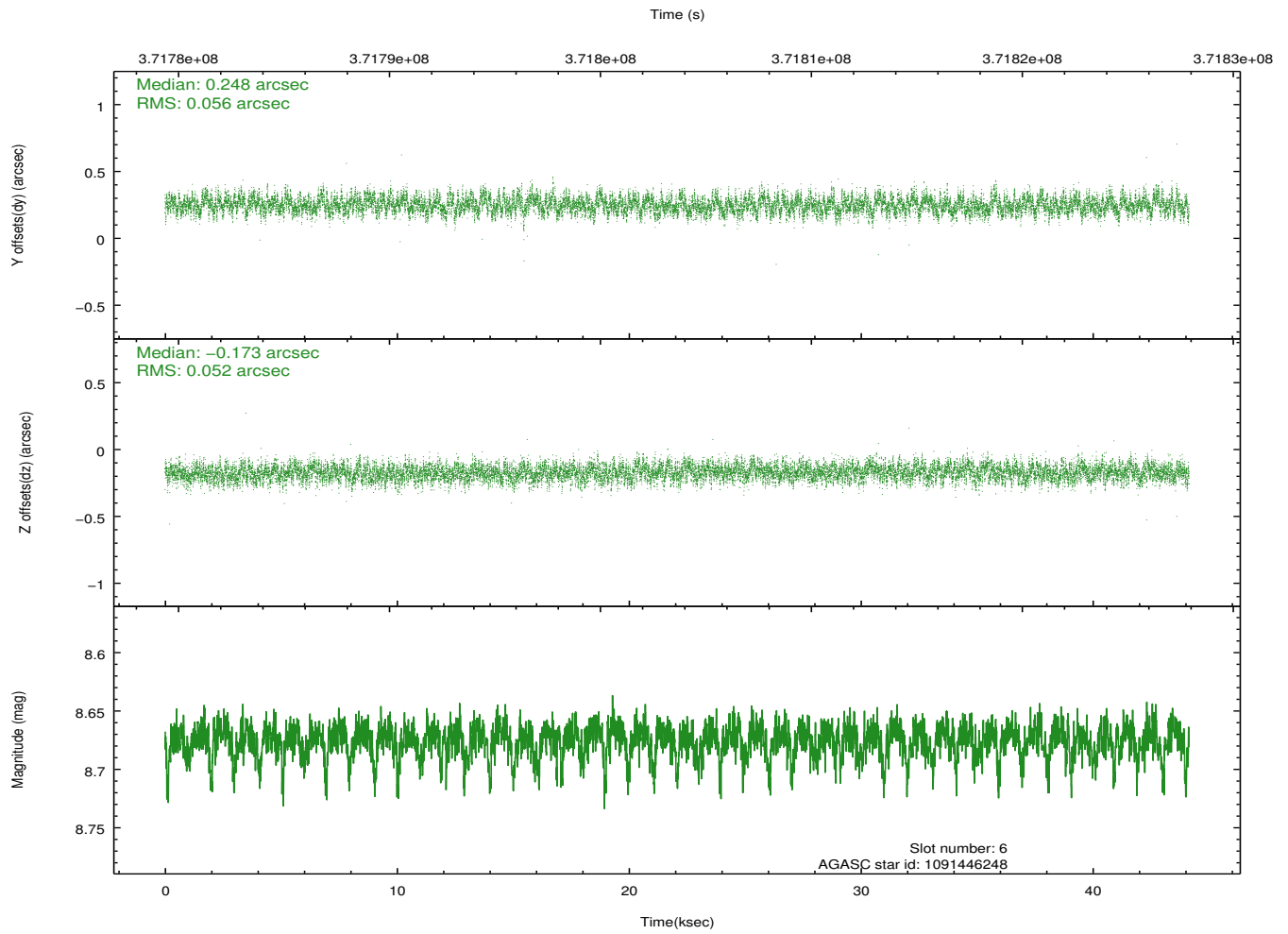
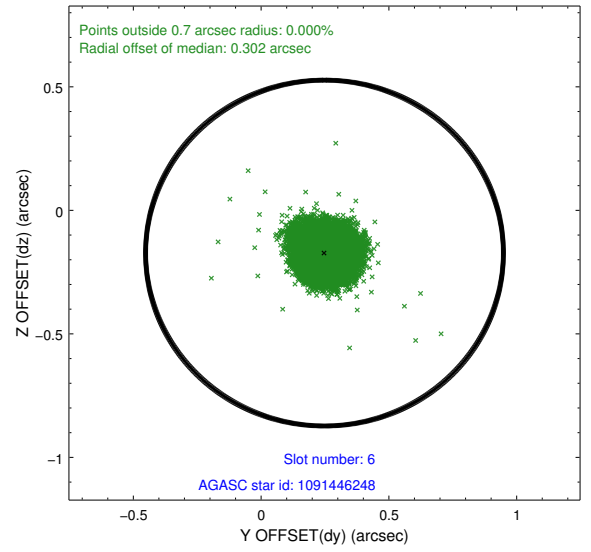
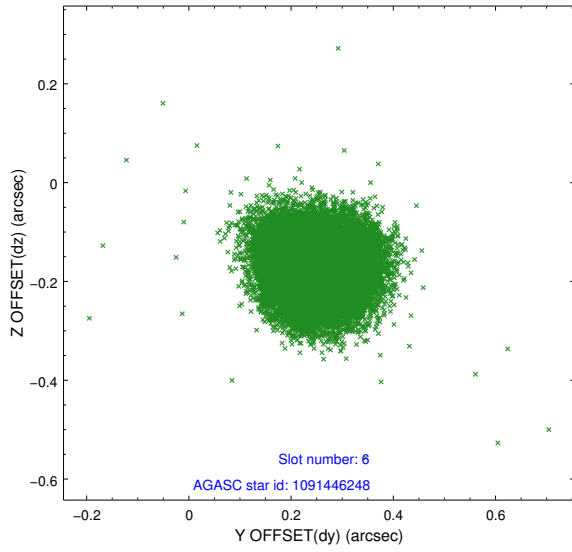
## 2.4.2 Slot 4



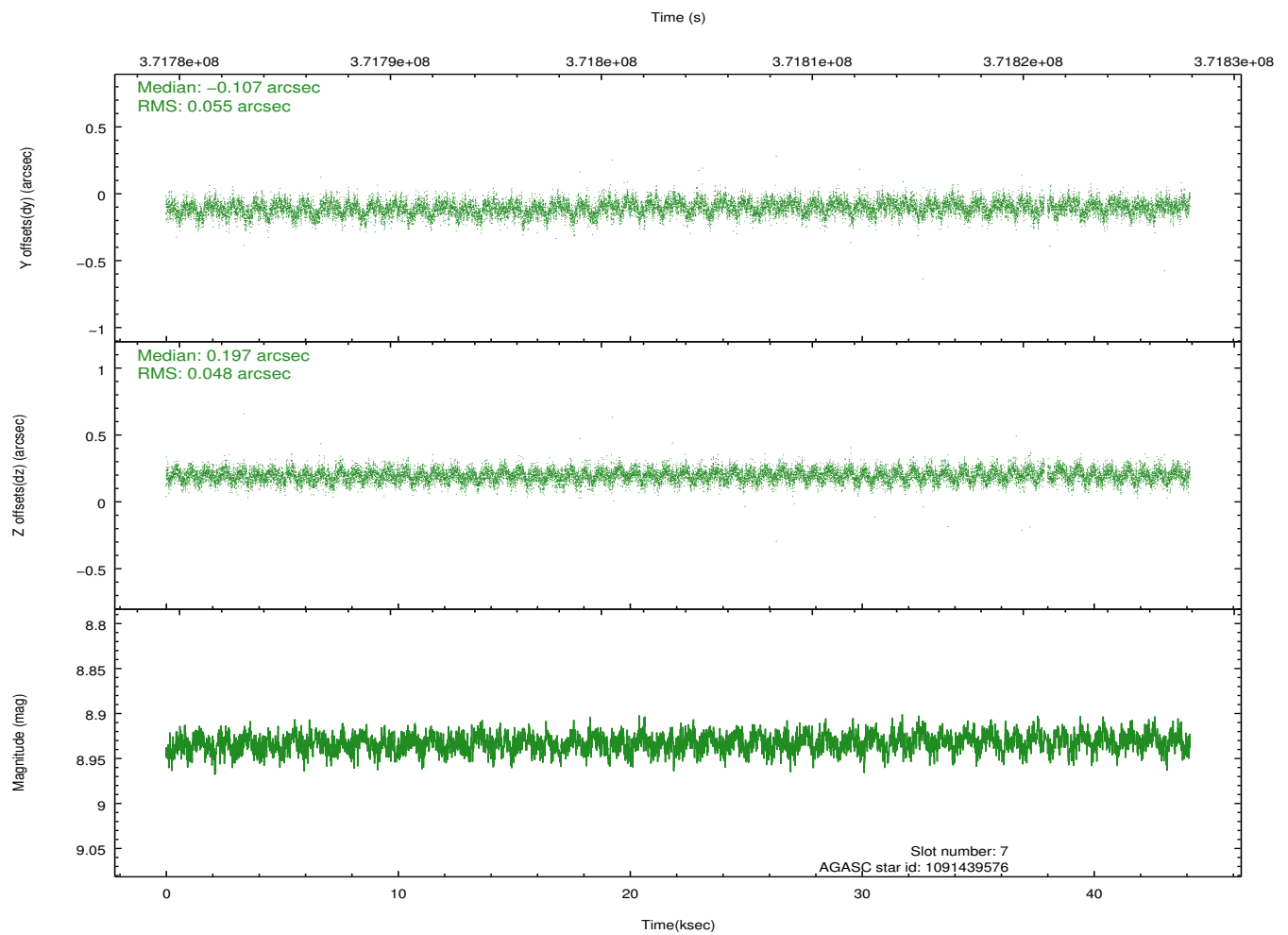
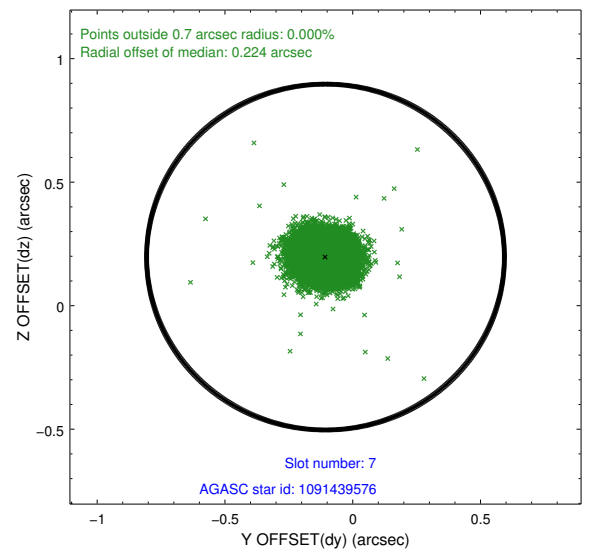
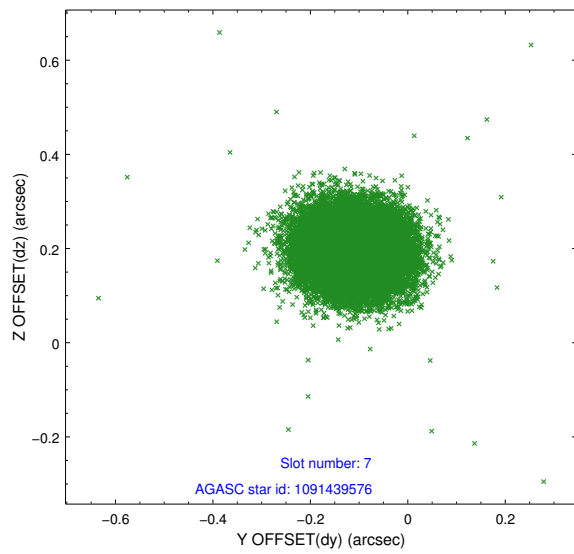
### 2.4.3 Slot 5



### 2.4.4 Slot 6

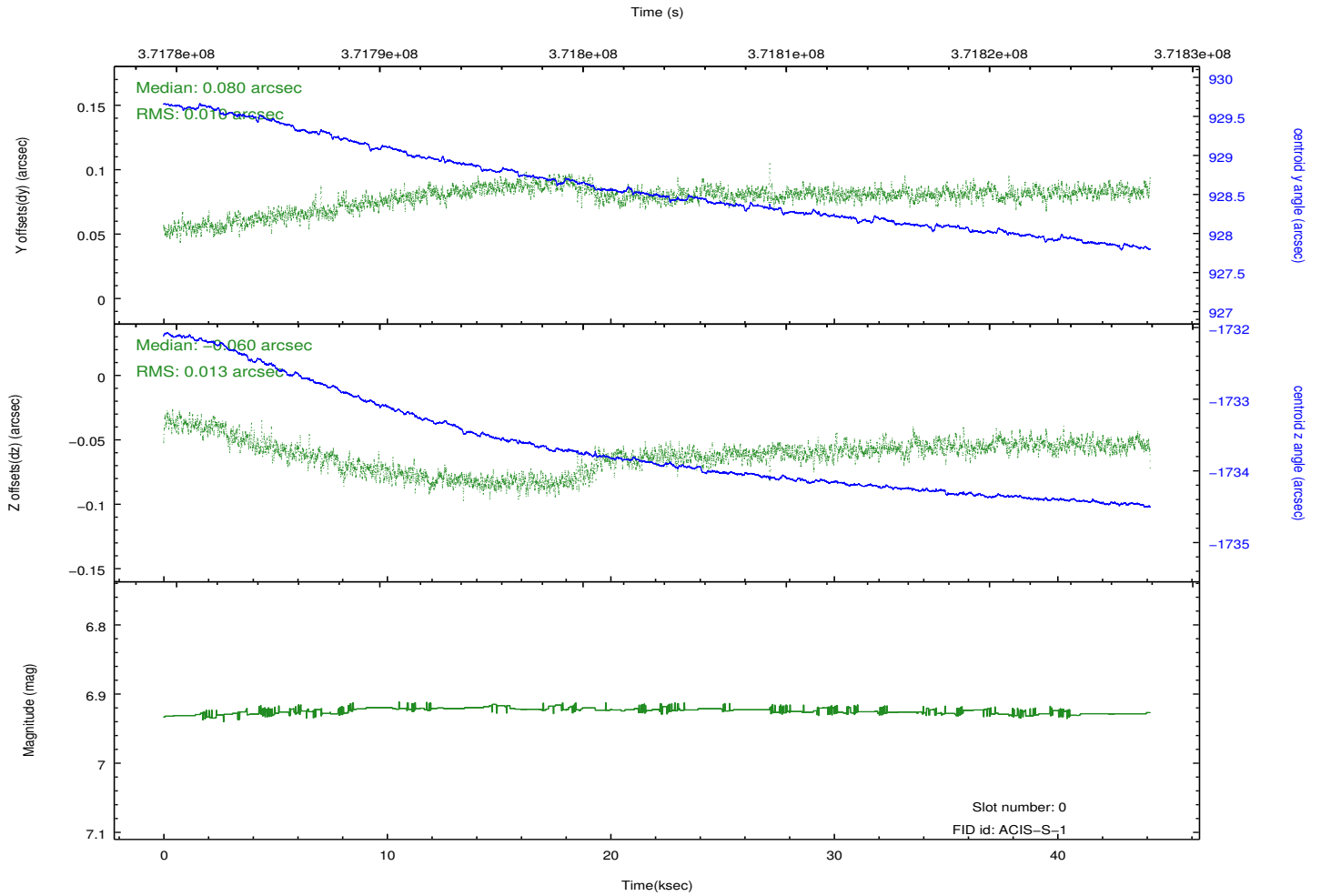
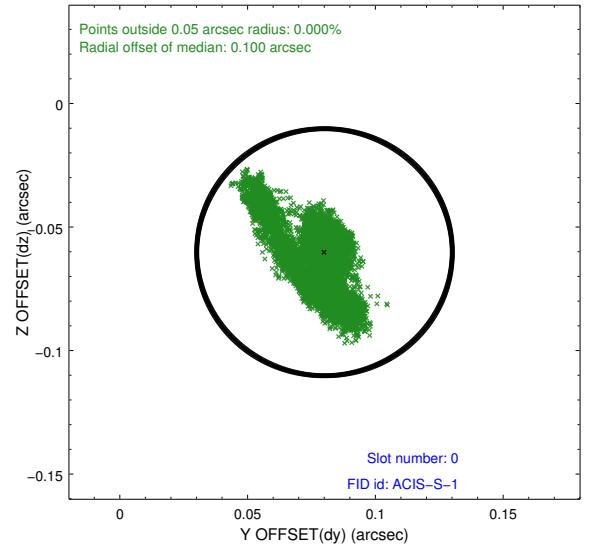
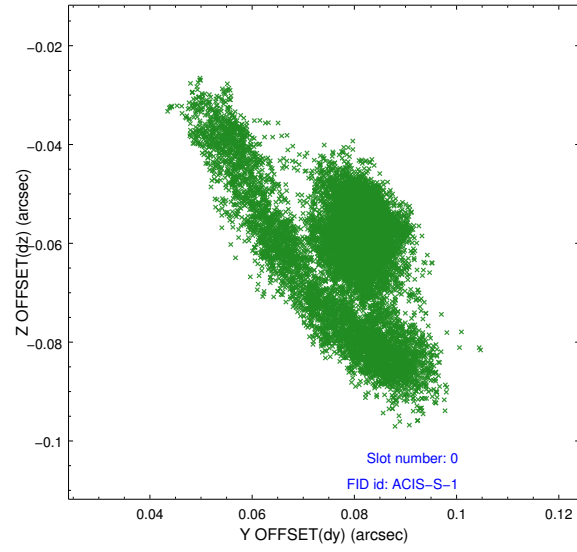


## 2.4.5 Slot 7

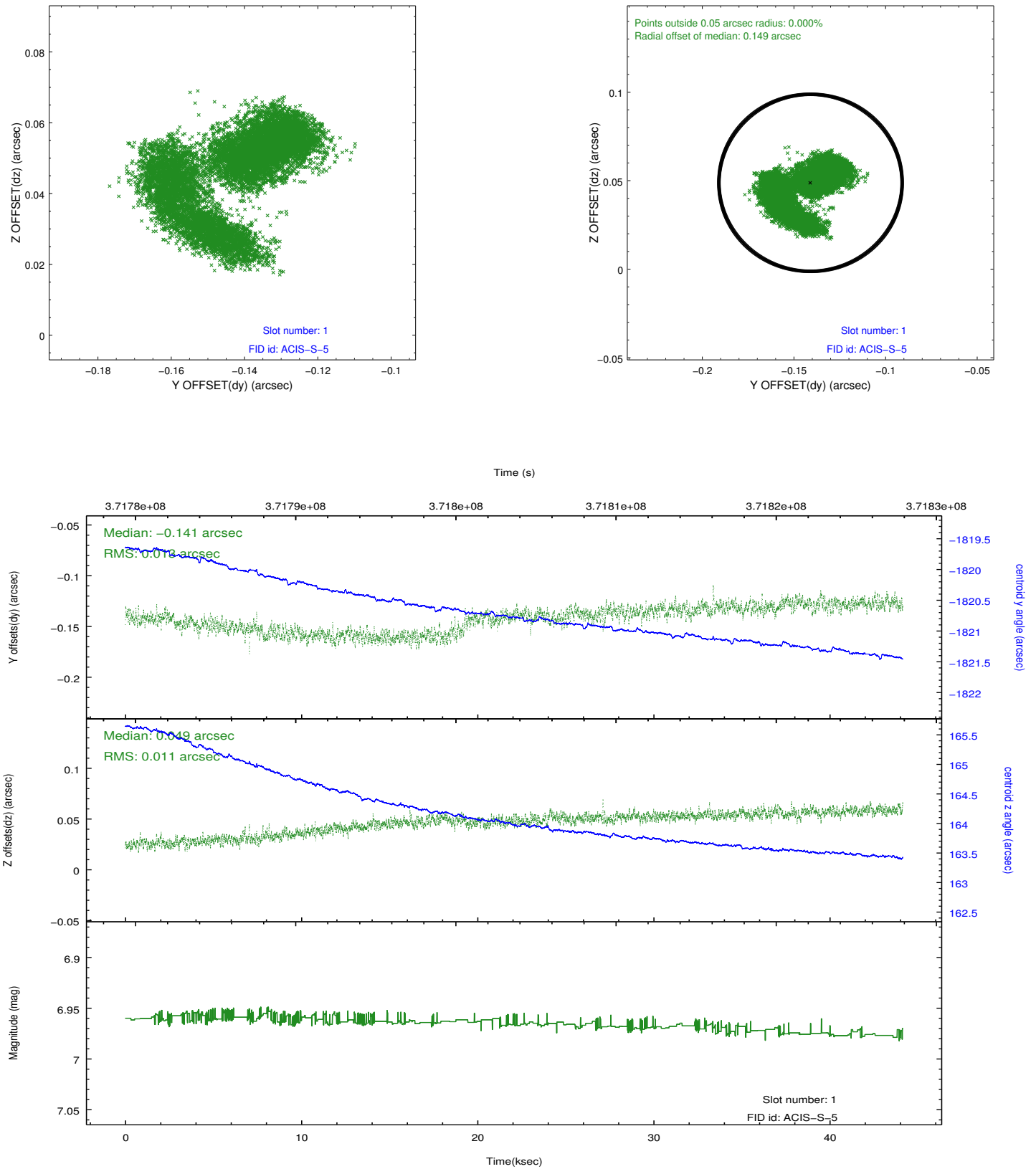


## 2.5 FID Slots

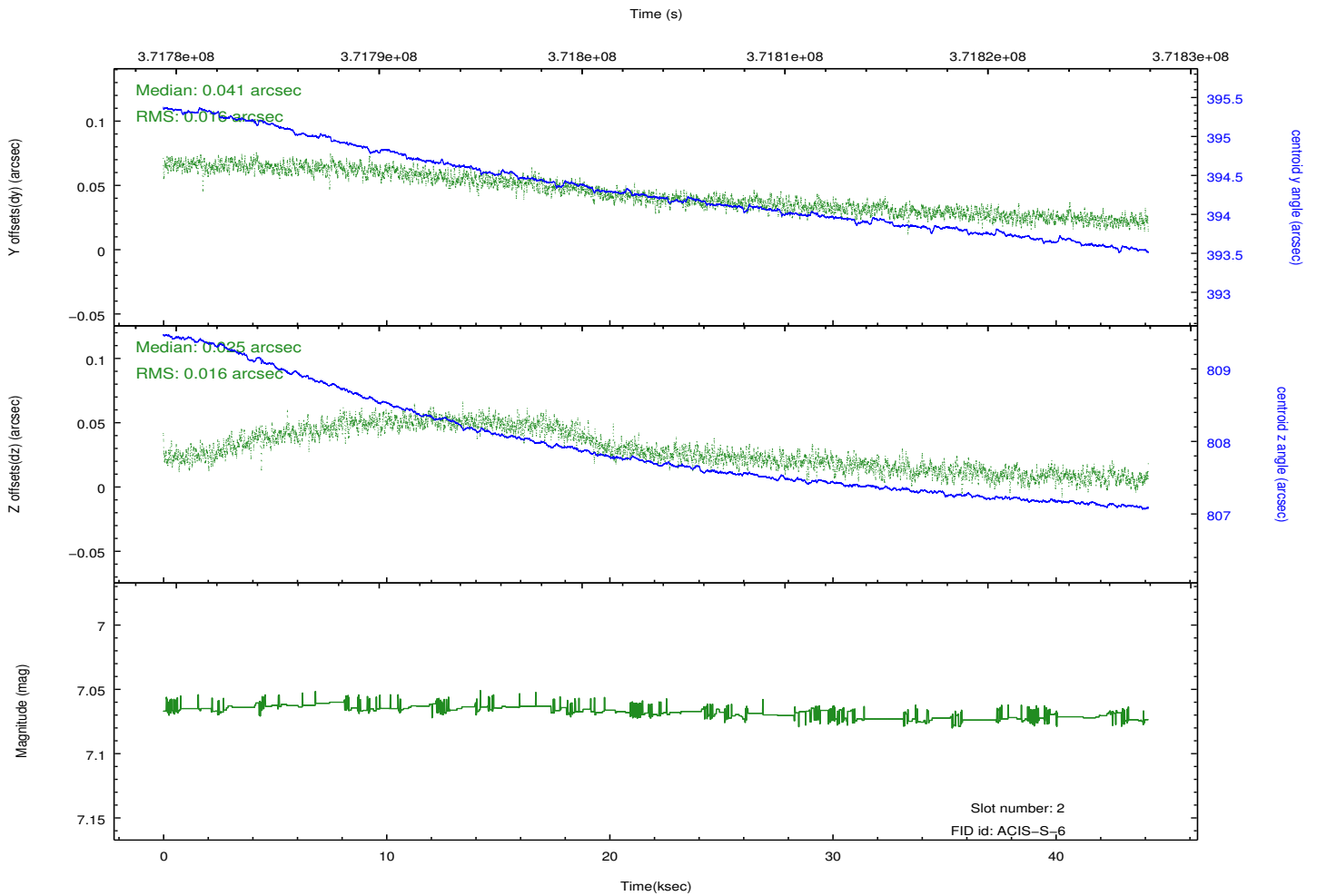
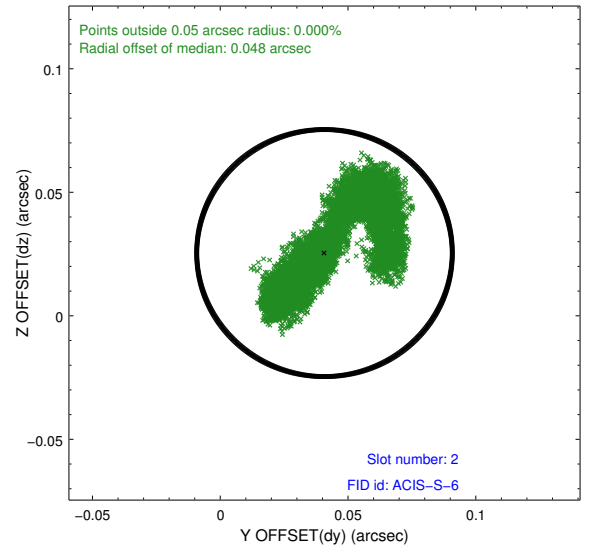
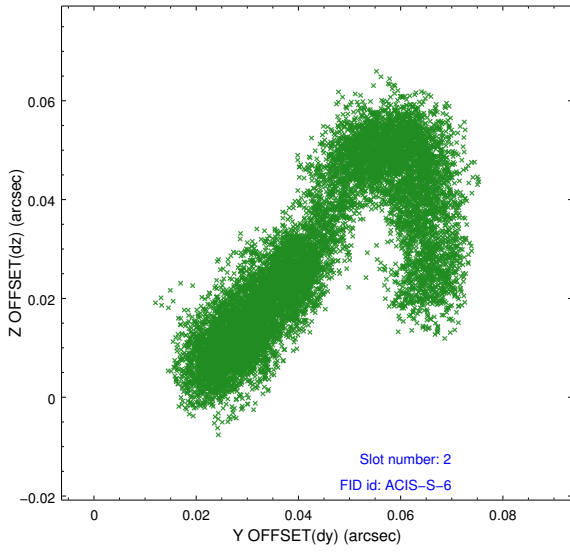
### 2.5.1 Slot 0



## 2.5.2 Slot 1



### 2.5.3 Slot 2



# A Summary

## A.1 Status

V&V Scientist	Jen Lauer
V&V Date (YYYY-MM-DD)	2012.06.19
V&V Edition	1
V&V Disposition and Status	OK
V&V Charge Time	44.140900339484

## A.2 Comments

Window constraint met.