

V&V Reference Report

L2 ASCDS Version : 8.4.4

Observation 10227 - L2 Version 4
Chandra X-Ray Center

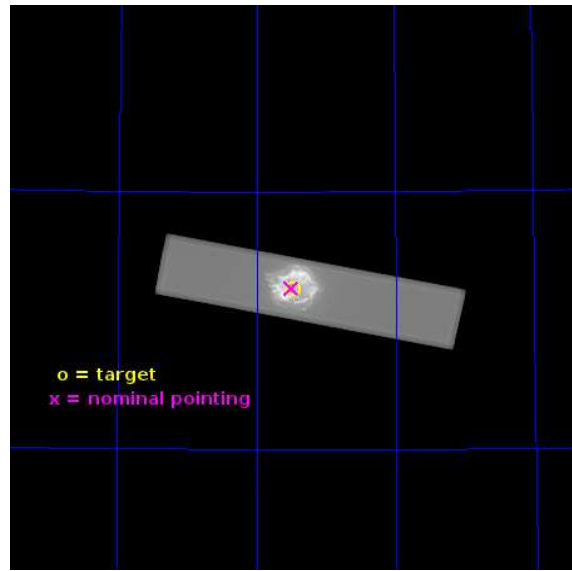
L2 Processing Date : Jun 29 2013

Contents

1	Front	2
2	OBI	3
2.1	OBI	3
2.1.1	Images	3
2.1.2	Parameters	4
2.1.3	Events	4
2.2	Compared Parameters	5
2.3	Aspect	6
2.4	Star Slots	9
2.4.1	Slot 3	9
2.4.2	Slot 4	10
2.4.3	Slot 5	11
2.4.4	Slot 6	12
2.4.5	Slot 7	13
2.5	FID Slots	14
2.5.1	Slot 0	14
2.5.2	Slot 1	15
2.5.3	Slot 2	16
A	Summary	17
A.1	Status	17
A.2	Comments	17

1 Front

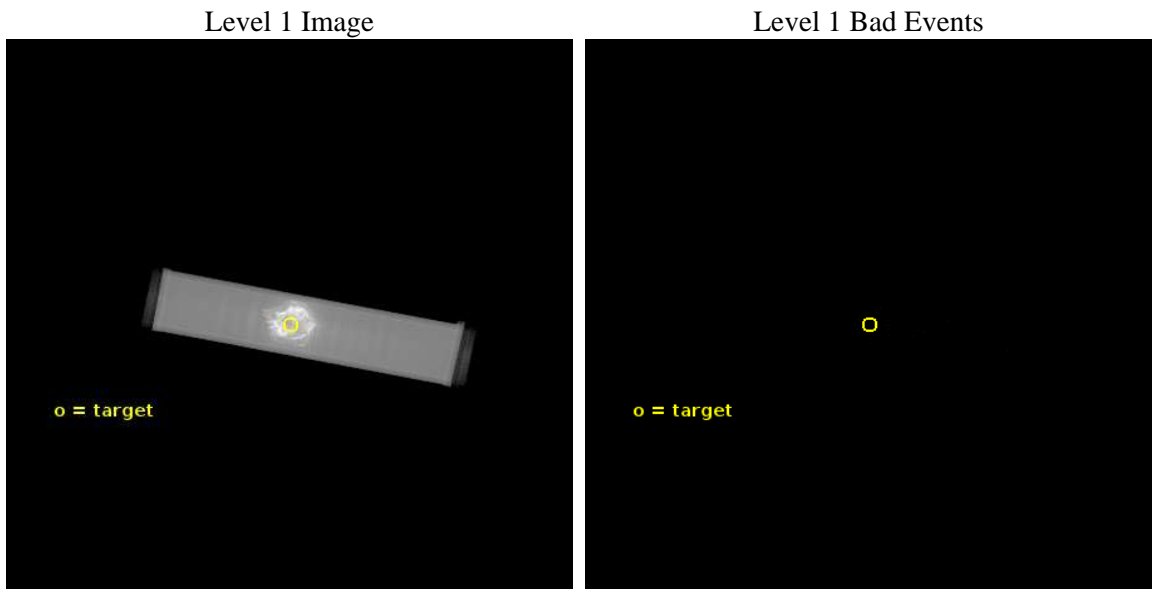
seq_num	501151	Sequence number
obs_id	10227	Observation id
title	Search for a Period in the Cas-A CCO	Proposal title
observer	Dr. Stephen Murray	Principal investigator
object	Cas A CCO	Source name
ra_targ	350.86625	Observer's specified target RA [deg]
dec_targ	58.811806	Observer's specified target Dec [deg]
ra_nom	350.87532939023	Nominal RA [deg]
dec_nom	58.812655629811	Nominal Dec [deg]
roll_nom	10.99784134134	Nominal Roll [deg]
revision	4	Processing version of data
ontime	132349.2878263	[s]
livetime	130856.20963635	Ontime multiplied by DTCOR
l2events	18386542	Number of level 2 events



2 OBI

2.1 OBI

2.1.1 Images



2.1.2 Parameters

obi_num	0	Obi number	sched_exp_time	132202.000000	[s] Scheduled observation exposure time
ascdsver	10	Processing system revision	ontime	132349.2878263	[s]
caldbver	4.5.7	 	l1events	21321353	Number of level 1 events
date	2013-06-29T05:30:43	Date and time of file creation			
revision	4	Processing version of data			

2.1.3 Events

Level 1 Events

	segment 1	segment 2	segment 3
level 1 events	11556	21309763	34
rejected events	79	86270	5
rejected %	0%	0%	14%

2.2 Compared Parameters

Parameter	Planned	Actual	Parameter	Planned	Actual
Instrument	HRC	HRC	Obspar format version number	7	7
Detector	HRC-S	HRC-S	Obspar file type	PREDICTED	ACTUAL
Grating	NONE	NONE	Obspar update status	NONE	UPDATED
Data mode	OBSERVING	OBSERVING			
Observation mode	POINTING	POINTING			
[deg] Pointing RA	350.835357	350.8753293902275			
[deg] Pointing Dec	58.792760	58.81265562981093			
[deg] Pointing Roll	10.964699	10.99784134133953			
[mm] SIM focus pos	-1.533336	-1.526339935833849			
[mm] SIM defocus	7.710433287538843e-07	0.006996703570447904			
[mm] SIM translation stage pos	250.455976	250.466033080201			
[mm] SIM translation stage offset	0	-0.01005468664627074			
[s] Observation start time (MET)	353973623.184000	353972615.71063			
Observation start date	2009-03-20T21:59:17	2009-03-20T21:43:35			
[s] Observation end time (MET)	354105825.184000	354106813.3298			
Observation end date	2009-03-22T10:42:39	2009-03-22T11:00:13			

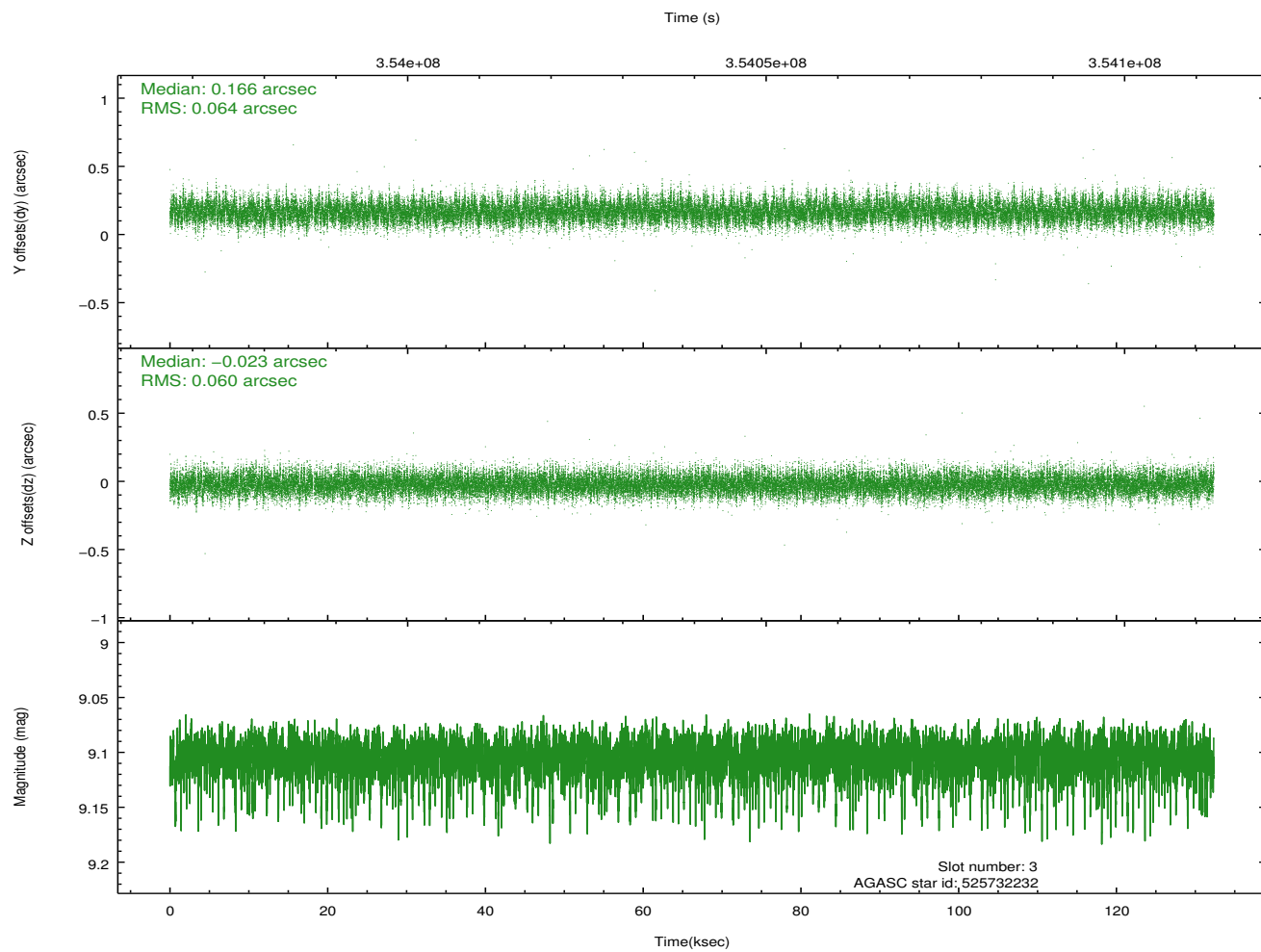
2.3 Aspect

Slot Statistics

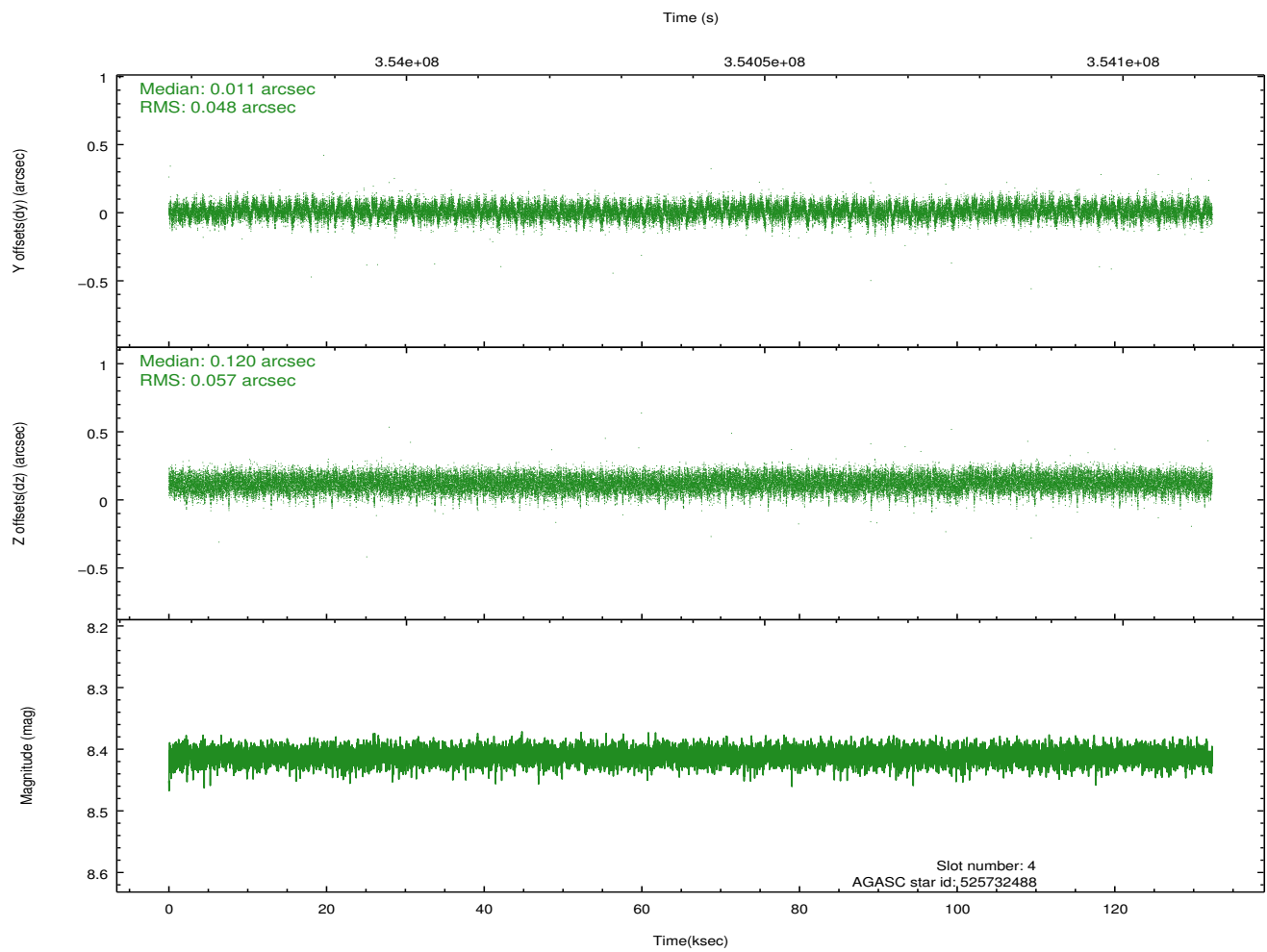
slot	status	id	mag	n_pts	med_dy	med_dz	dr1	dr2	ra	dec	mean_y	mean_z
0	FID	HRC-S-1	6.99	32280	0.064	-0.150	0.024	0.069	0.000000	0.000000	-1169.85	-465.75
1	FID	HRC-S-2	6.98	32279	0.217	-0.109	0.025	0.036	0.000000	0.000000	1229.93	-458.32
2	FID	HRC-S-3	7.00	32278	0.109	-0.043	0.024	0.065	0.000000	0.000000	-1172.50	563.88
3	GUIDE	525732232	9.10	64406	0.166	-0.023	0.093	0.150	351.669550	58.757012	1507.76	-414.04
4	GUIDE	525732488	8.41	64538	0.011	0.120	0.079	0.126	350.087090	58.516915	-1568.14	-699.43
5	GUIDE	525735456	7.07	64557	-0.110	-0.202	0.057	0.092	350.628183	59.307249	-21.58	1891.29
6	GUIDE	525735976	8.84	64500	0.002	0.111	0.086	0.138	350.142956	58.277622	-1638.02	-1564.57
7	GUIDE	525732528	9.35	64413	-0.071	-0.002	0.093	0.153	351.607241	59.298932	1740.82	1527.47

2.4 Star Slots

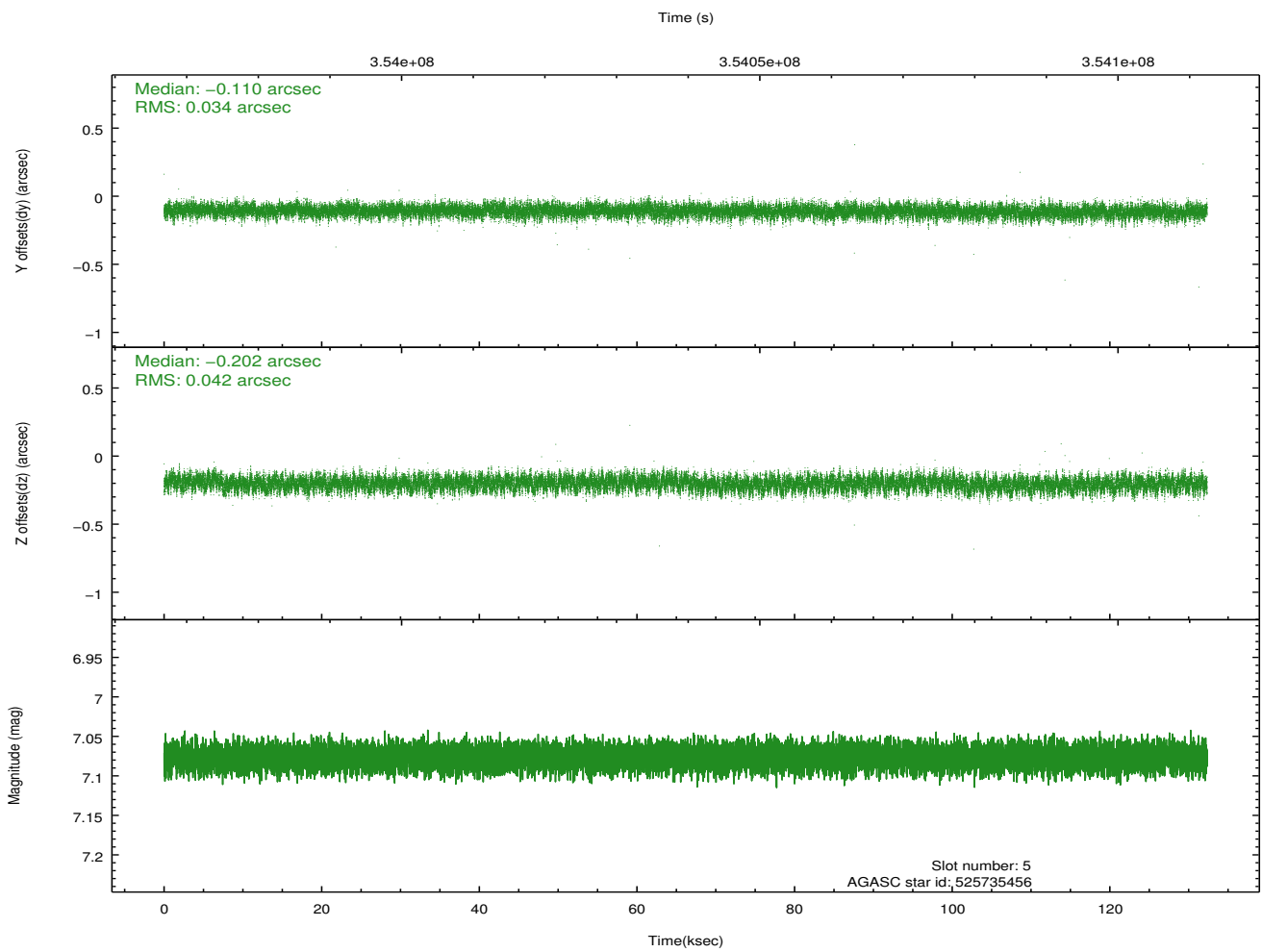
2.4.1 Slot 3



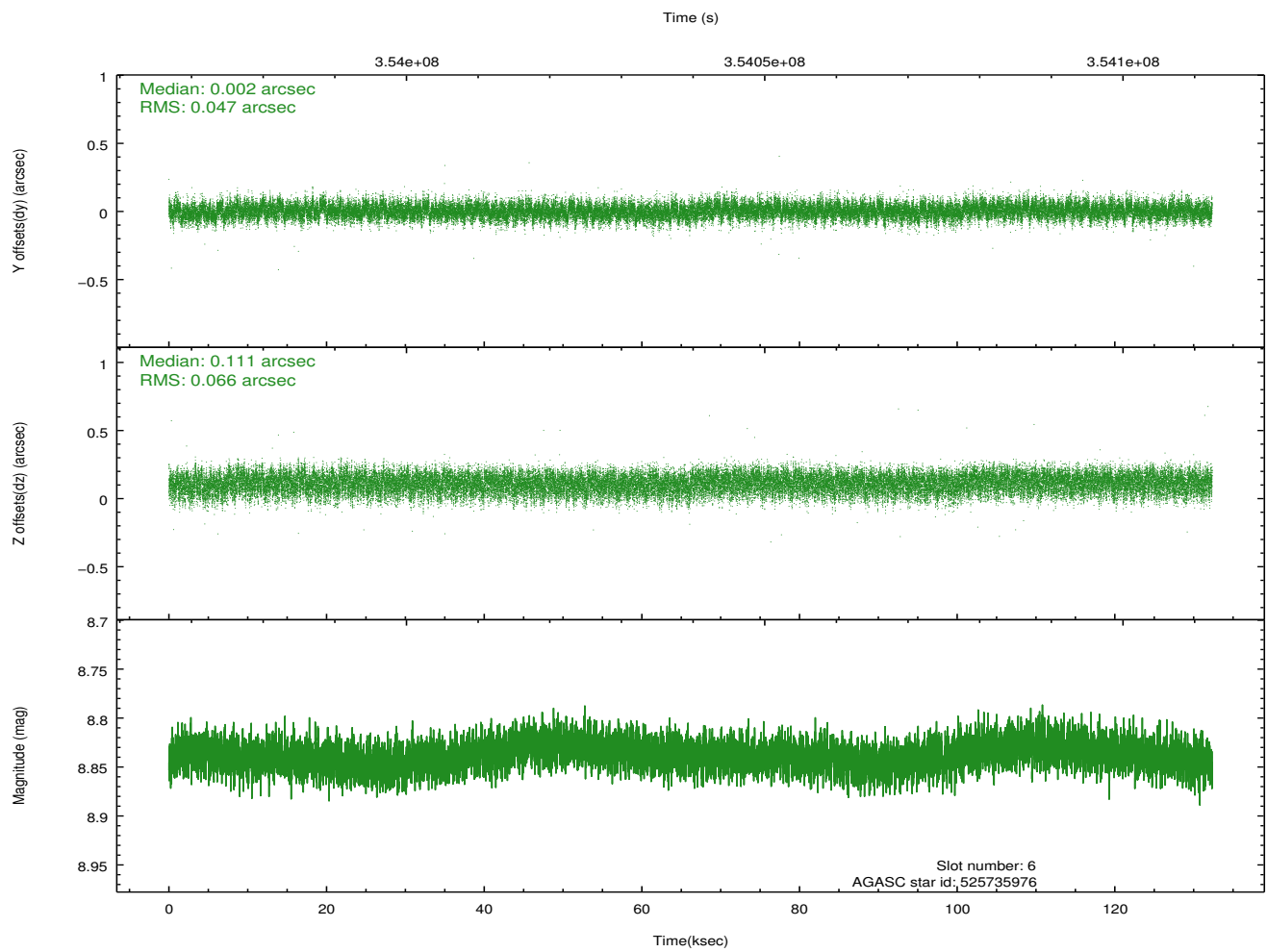
2.4.2 Slot 4



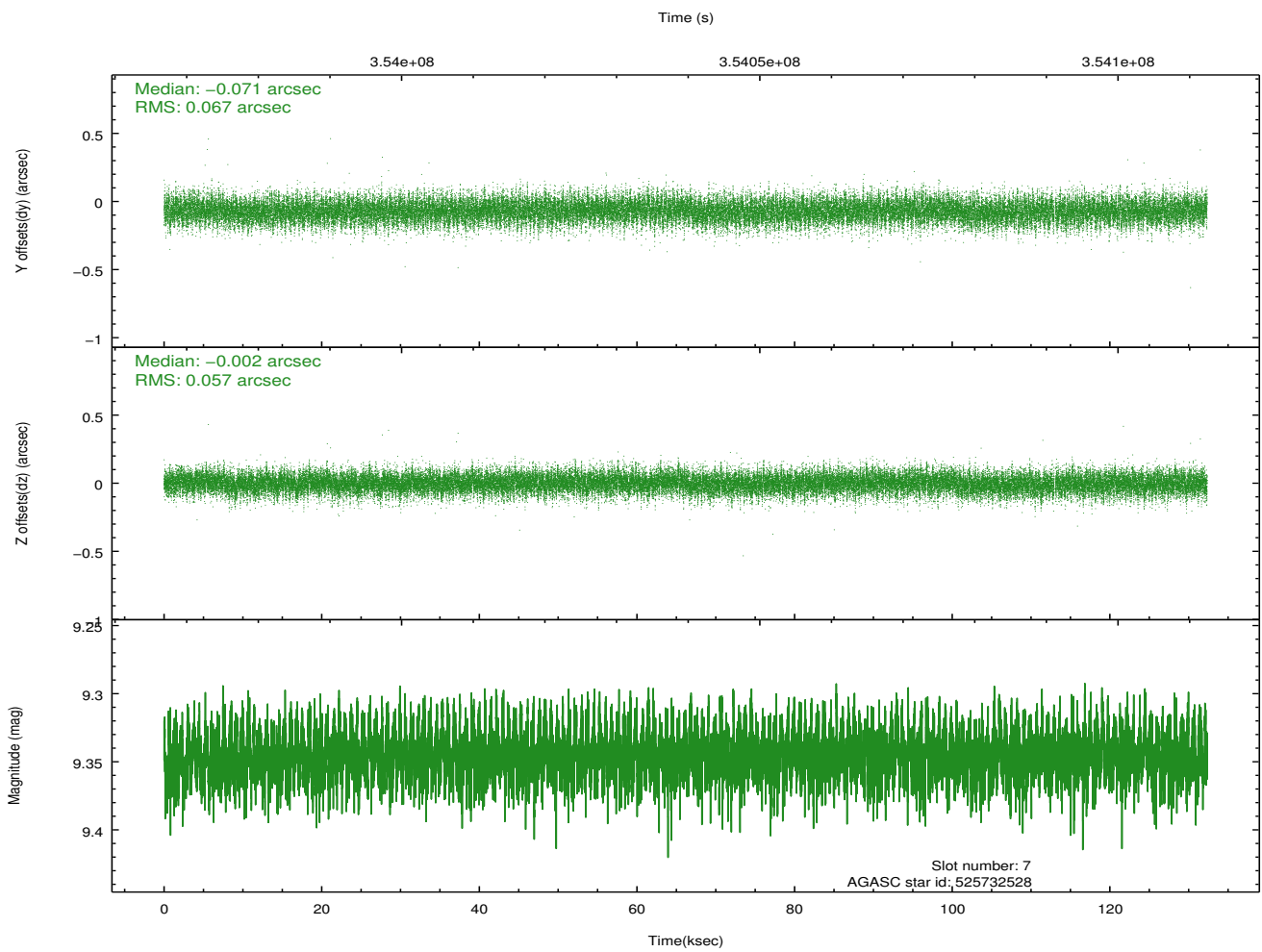
2.4.3 Slot 5



2.4.4 Slot 6

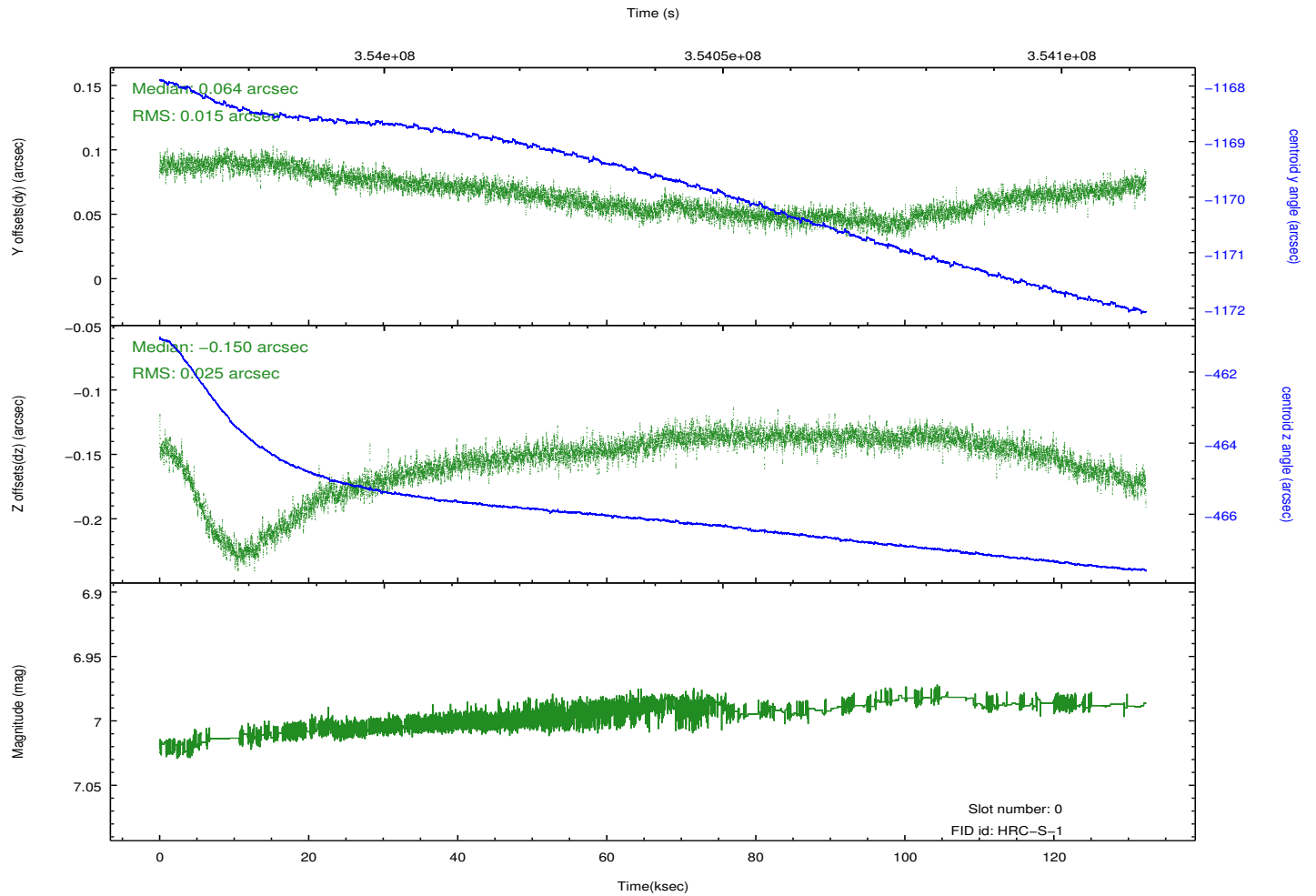
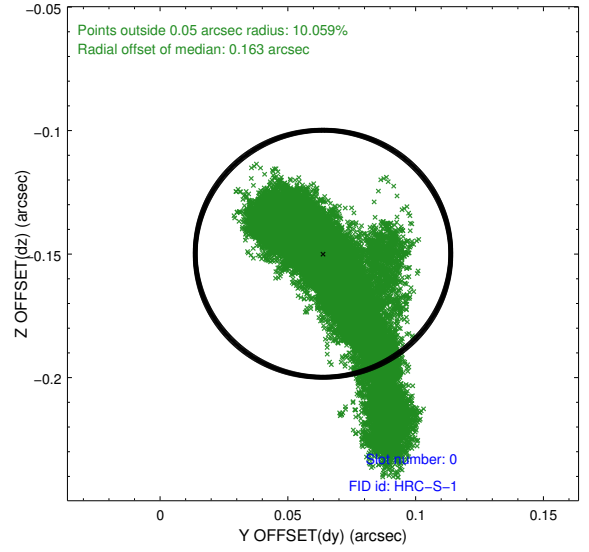
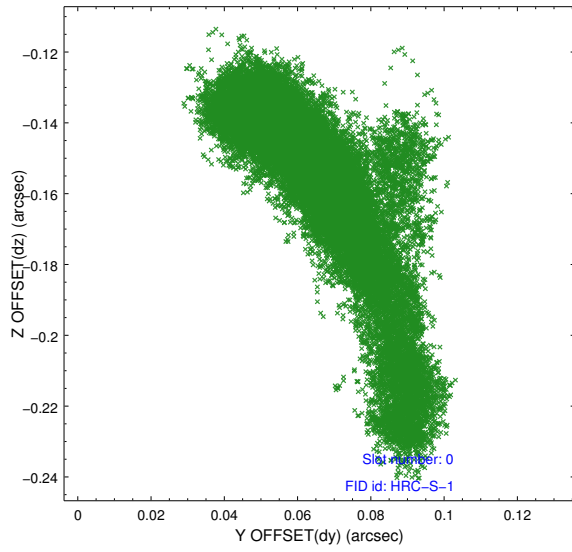


2.4.5 Slot 7

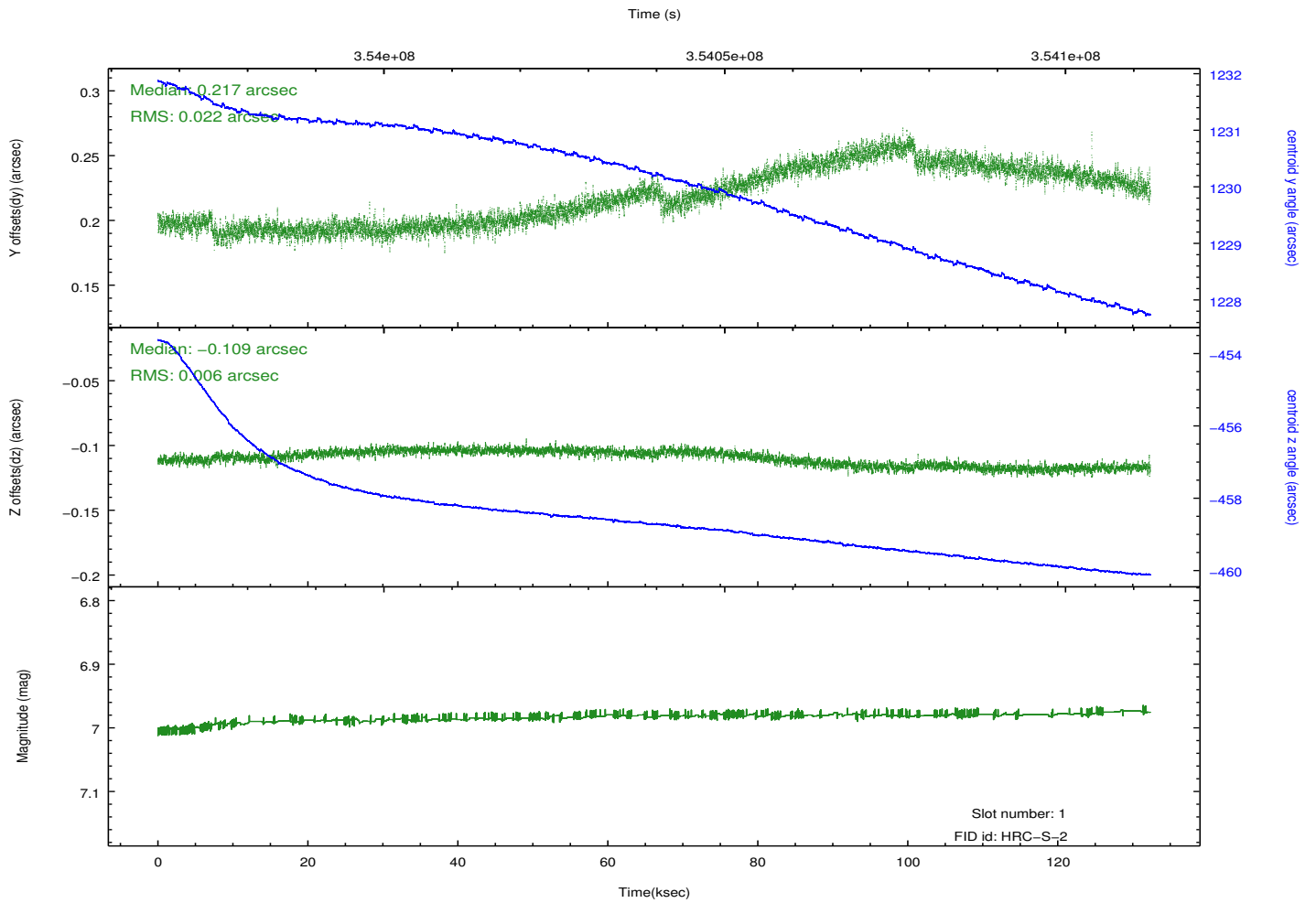
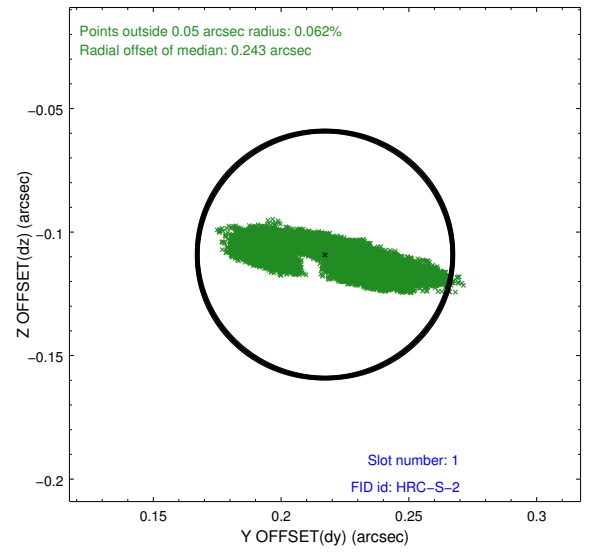
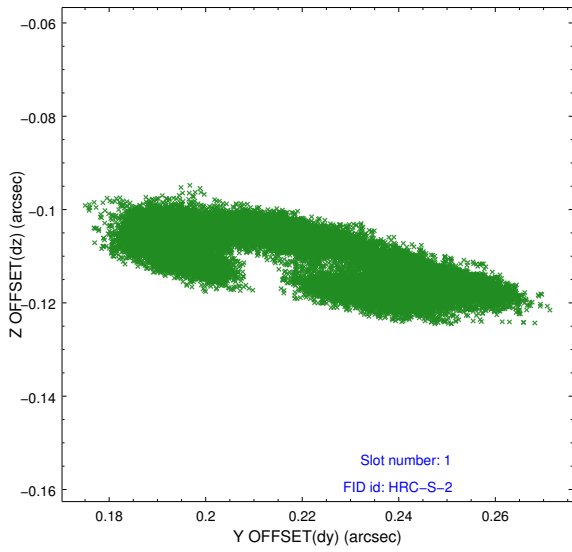


2.5 FID Slots

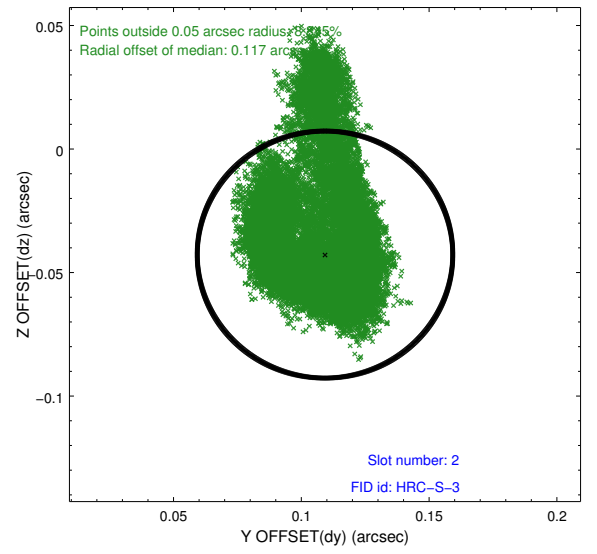
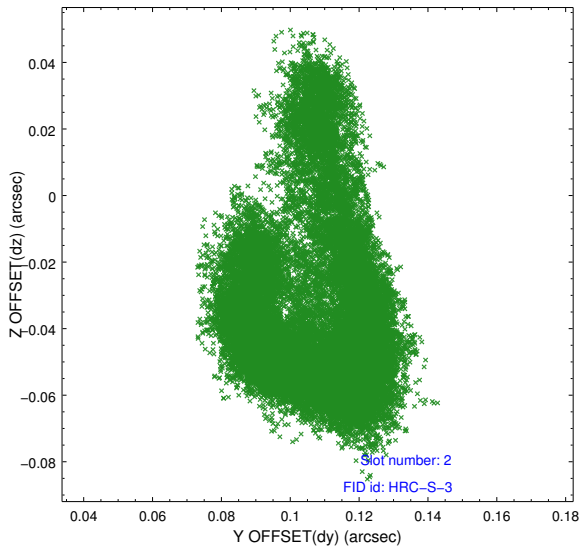
2.5.1 Slot 0



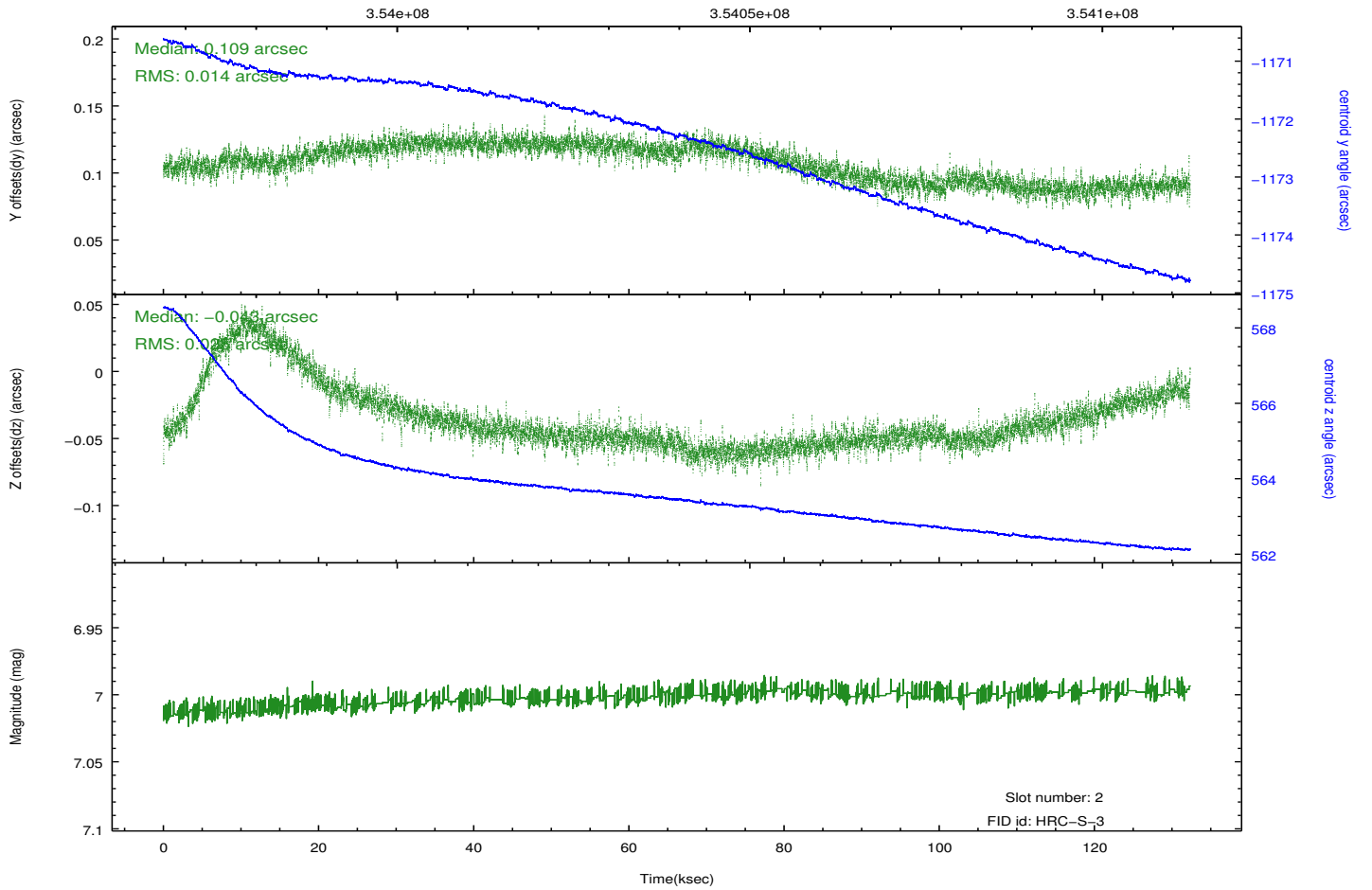
2.5.2 Slot 1



2.5.3 Slot 2



Time (s)



A Summary

A.1 Status

V&V Scientist	Beth Sundheim
V&V Date (YYYY-MM-DD)	2013.07.02
V&V Edition	1
V&V Disposition and Status	OK
V&V Charge Time	132.349287

A.2 Comments