

V&V Reference Report

L2 ASCDS Version : 8.4.4

Observation 10407 - L2 Version 3
Chandra X-Ray Center

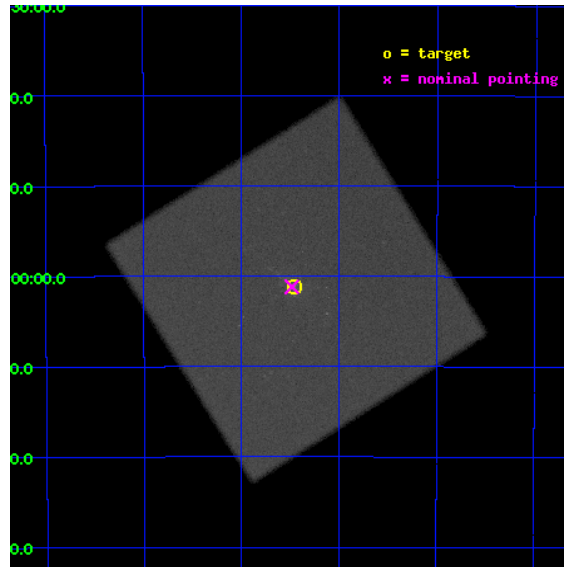
L2 Processing Date : Aug 13 2012

Contents

1	Front	2
2	OBI	3
2.1	OBI	3
2.1.1	Images	3
2.1.2	Parameters	4
2.1.3	Events	4
2.2	Compared Parameters	5
2.3	Aspect	6
2.4	Star Slots	9
2.4.1	Slot 3	9
2.4.2	Slot 4	10
2.4.3	Slot 5	11
2.4.4	Slot 6	12
2.4.5	Slot 7	13
2.5	FID Slots	14
2.5.1	Slot 0	14
2.5.2	Slot 1	15
2.5.3	Slot 2	16
A	Summary	17
A.1	Status	17
A.2	Comments	17

1 Front

seq_num	701948	Sequence number
obs_id	10407	Observation id
title	Mapping the Centaurus A Nuclear Region	Proposal title
observer	DR. MARGARITA KAROVSKA	Principal investigator
object	CEN A	Source name
ra_targ	201.365062	Observer's specified target RA [deg]
dec_targ	-43.019114	Observer's specified target Dec [deg]
ra_nom	201.37076216743	Nominal RA [deg]
dec_nom	-43.019694867458	Nominal Dec [deg]
roll_nom	12.977951018625	Nominal Roll [deg]
revision	3	Processing version of data
ontime	15163.082004189	[s]
livetime	14981.523987165	Ontime multiplied by DTCOR
l2events	1119869	Number of level 2 events

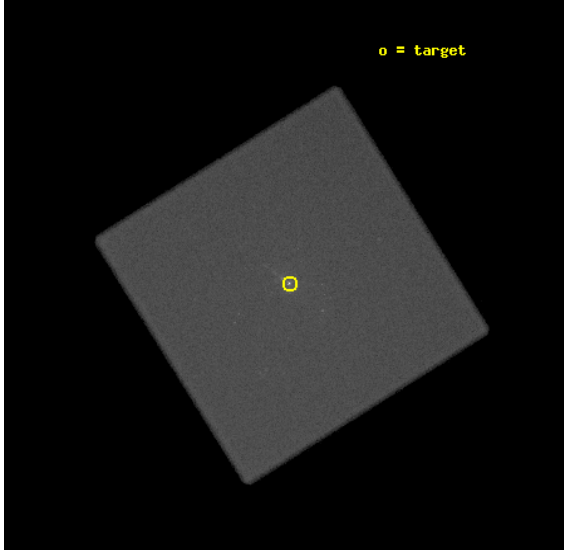


2 OBI

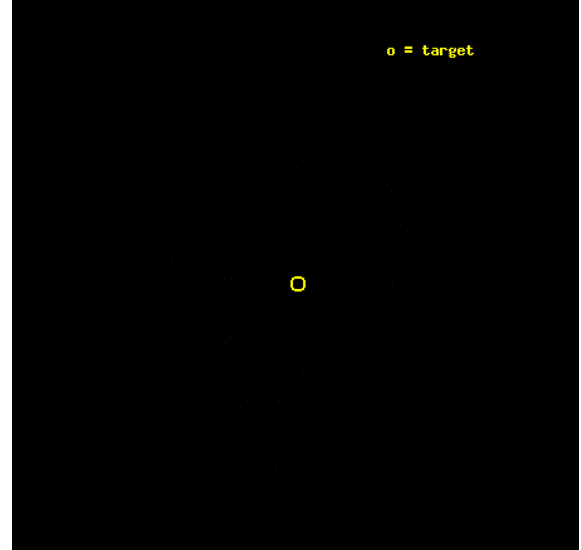
2.1 OBI

2.1.1 Images

Level 1 Image



Level 1 Bad Events



2.1.2 Parameters

obi_num	0	Obi number	sched_exp_time	15000.000000	[s] Scheduled observation exposure time
ascdsver	8.4.5	Processing system revision	ontime	15163.082004189	[s]
caldbver	4.5.1.1	 	l1events	1782820	Number of level 1 events
date	2012-08-13T06:58:44	Date and time of file creation			
revision	3	Processing version of data			

2.1.3 Events

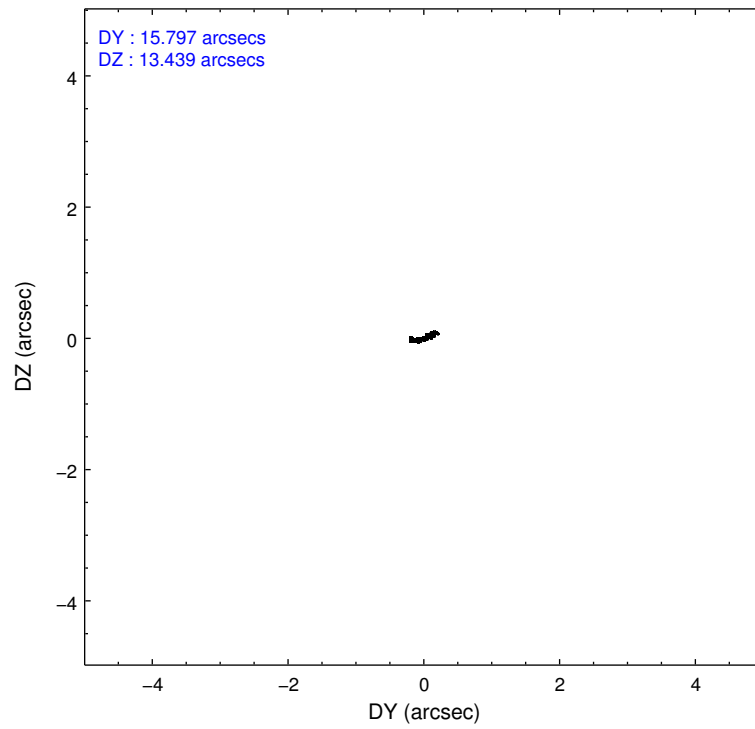
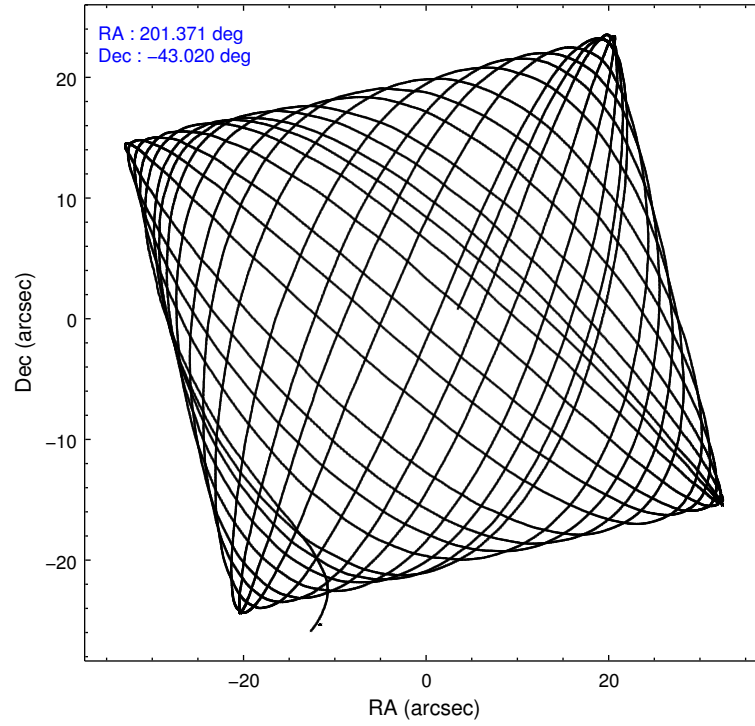
Level 1 Events

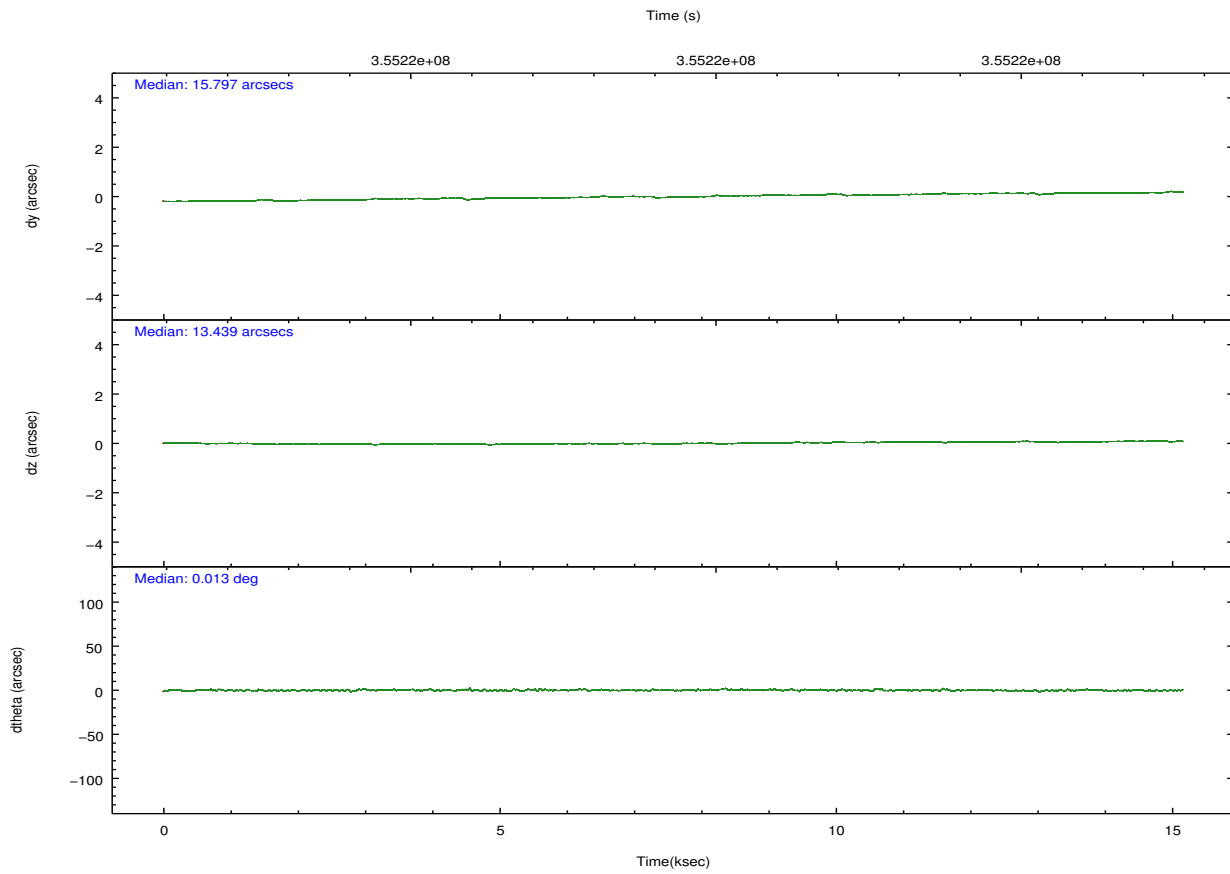
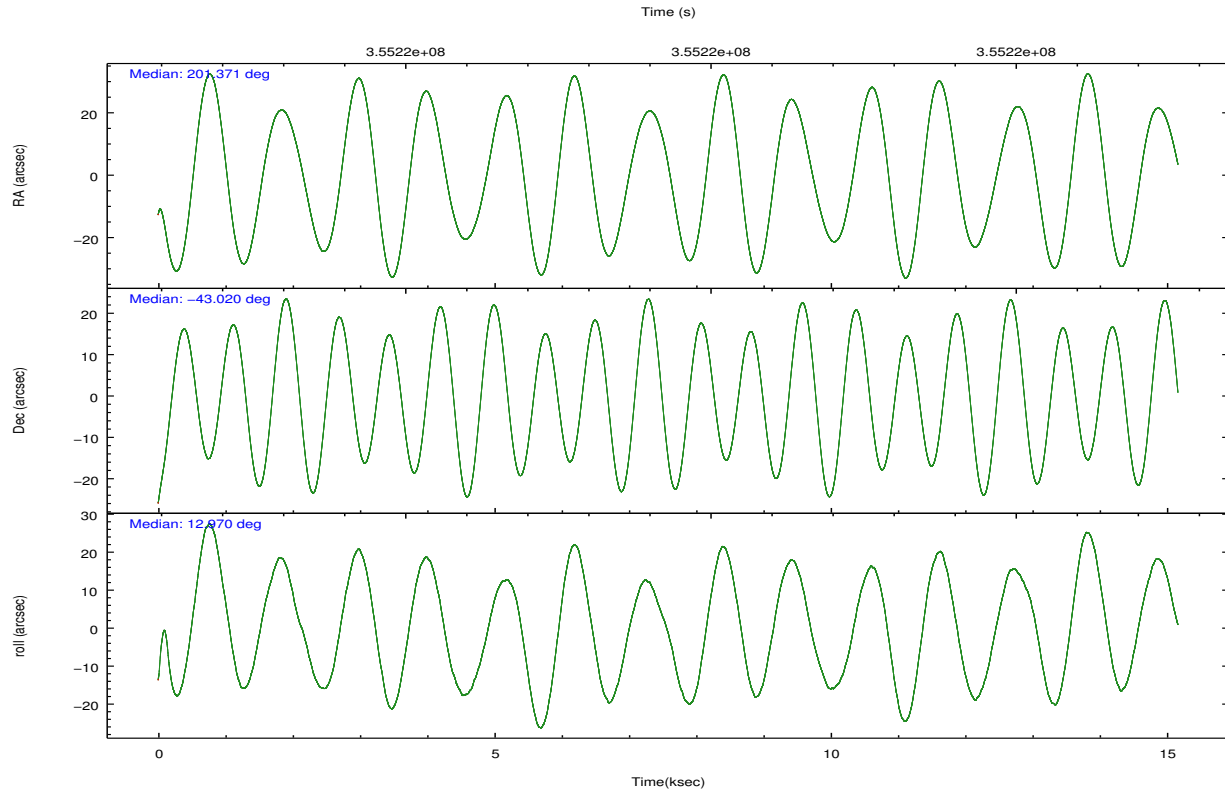
	segment 0
level 1 events	1782820
rejected events	159492
rejected %	8%

2.2 Compared Parameters

Parameter	Planned	Actual	Parameter	Planned	Actual
Instrument	HRC	HRC	Obspar format version number	7	7
Detector	HRC-I	HRC-I	Obspar file type	PREDICTED	ACTUAL
Grating	NONE	NONE	Obspar update status	NONE	UPDATED
Data mode	OBSERVING	OBSERVING			
Observation mode	POINTING	POINTING			
[deg] Pointing RA	201.344141	201.3707621674307			
[deg] Pointing Dec	-43.038749	-43.019694867458			
[deg] Pointing Roll	13.055285	12.97795101862453			
[mm] SIM focus pos	-1.040293	-1.038866356238299			
[mm] SIM defocus	0	0.001426264420575141			
[mm] SIM translation stage pos	126.985494	126.9829799899862			
[mm] SIM translation stage offset	0	0.002508901615314585			
[s] Observation start time (MET)	355211866.184000	355210226.90967			
Observation start date	2009-04-04T05:56:40	2009-04-04T05:30:26			
[s] Observation end time (MET)	355226866.184000	355228089.07306			
Observation end date	2009-04-04T10:06:40	2009-04-04T10:28:09			

2.3 Aspect



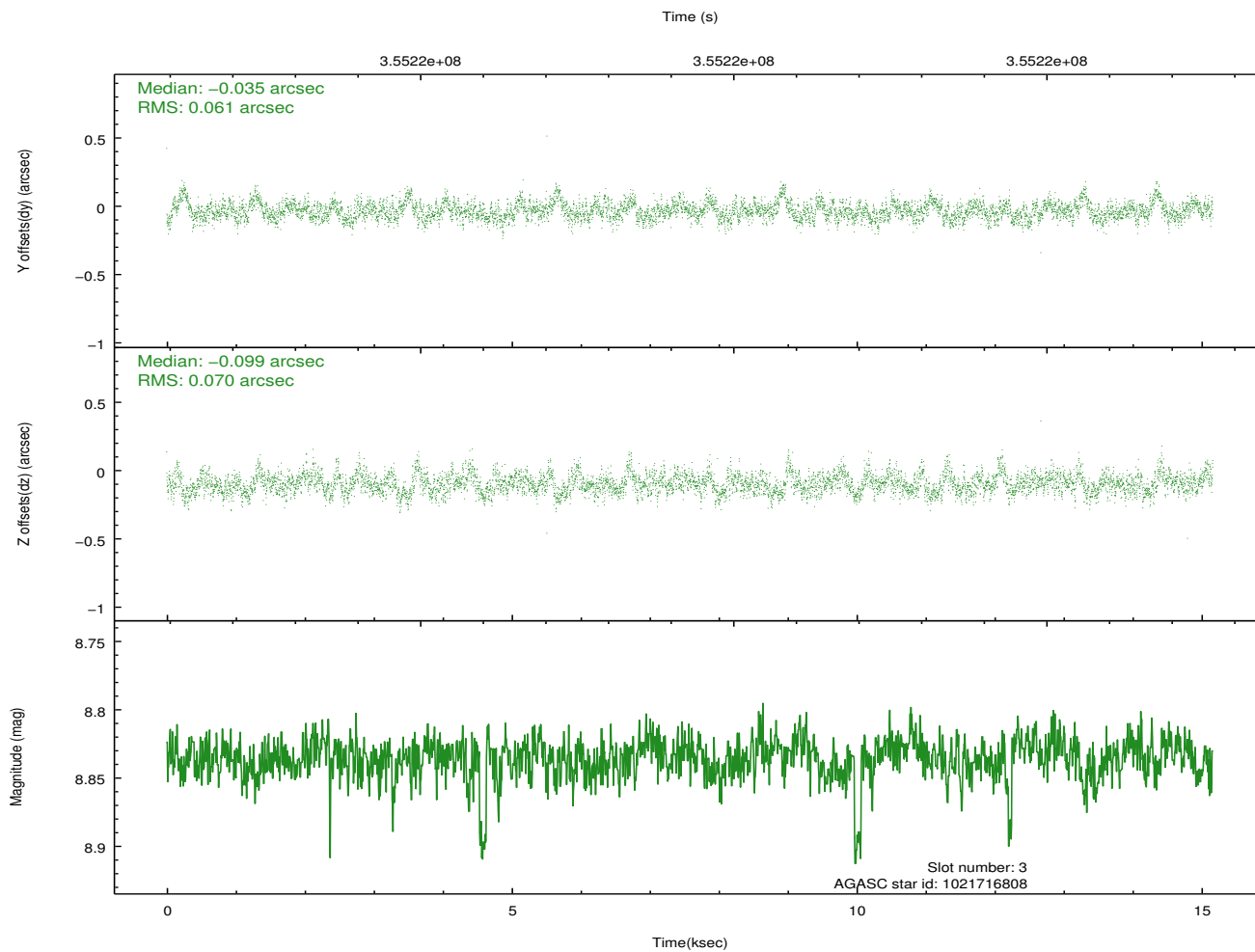
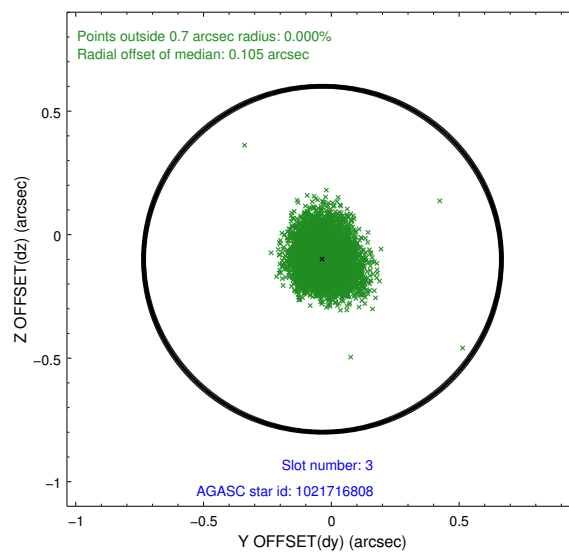
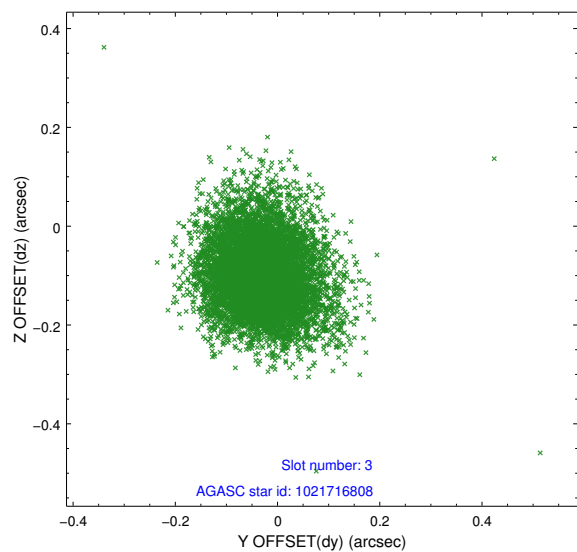


Slot Statistics

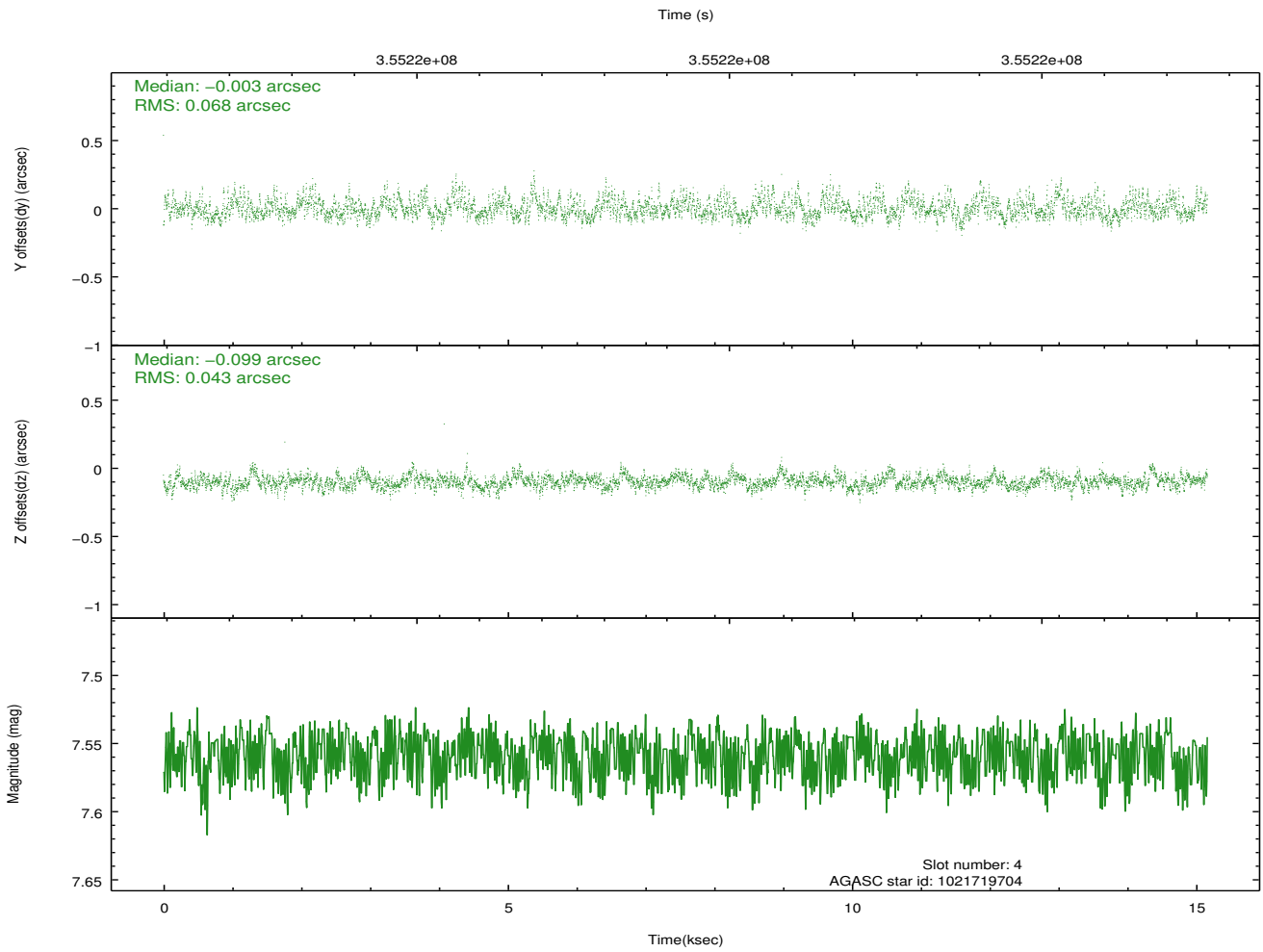
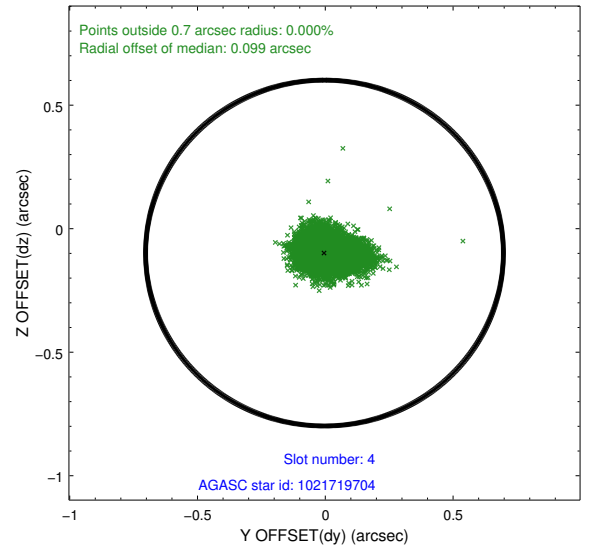
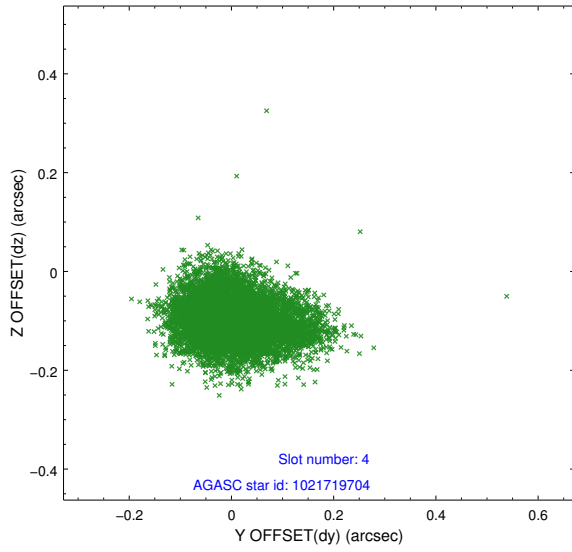
slot	status	id	mag	n_pts	med_dy	med_dz	dr1	dr2	ra	dec	mean_y	mean_z
0	FID	HRC-I-1	7.04	3699	0.004	-0.053	0.008	0.015	0.000000	0.000000	-771.71	-1301.49
1	FID	HRC-I-3	7.12	3699	-0.104	-0.041	0.009	0.019	0.000000	0.000000	-1200.35	1002.77
2	FID	HRC-I-4	7.06	3699	0.214	0.005	0.009	0.015	0.000000	0.000000	1271.13	1000.87
3	GUIDE	1021716808	8.83	7390	-0.035	-0.099	0.097	0.163	200.901189	-42.531395	-733.11	2041.50
4	GUIDE	1021719704	7.56	7395	-0.003	-0.099	0.083	0.143	200.511976	-43.050426	-2144.29	442.83
5	GUIDE	1021721672	9.52	7373	0.020	0.232	0.118	0.190	201.740358	-43.079729	981.01	-380.94
6	GUIDE	1022235840	9.44	7387	-0.041	-0.267	0.143	0.249	201.679306	-43.544276	441.17	-1972.29
7	GUIDE	1022238048	9.47	7379	0.045	0.233	0.132	0.215	200.760188	-43.821427	-2114.91	-2407.72

2.4 Star Slots

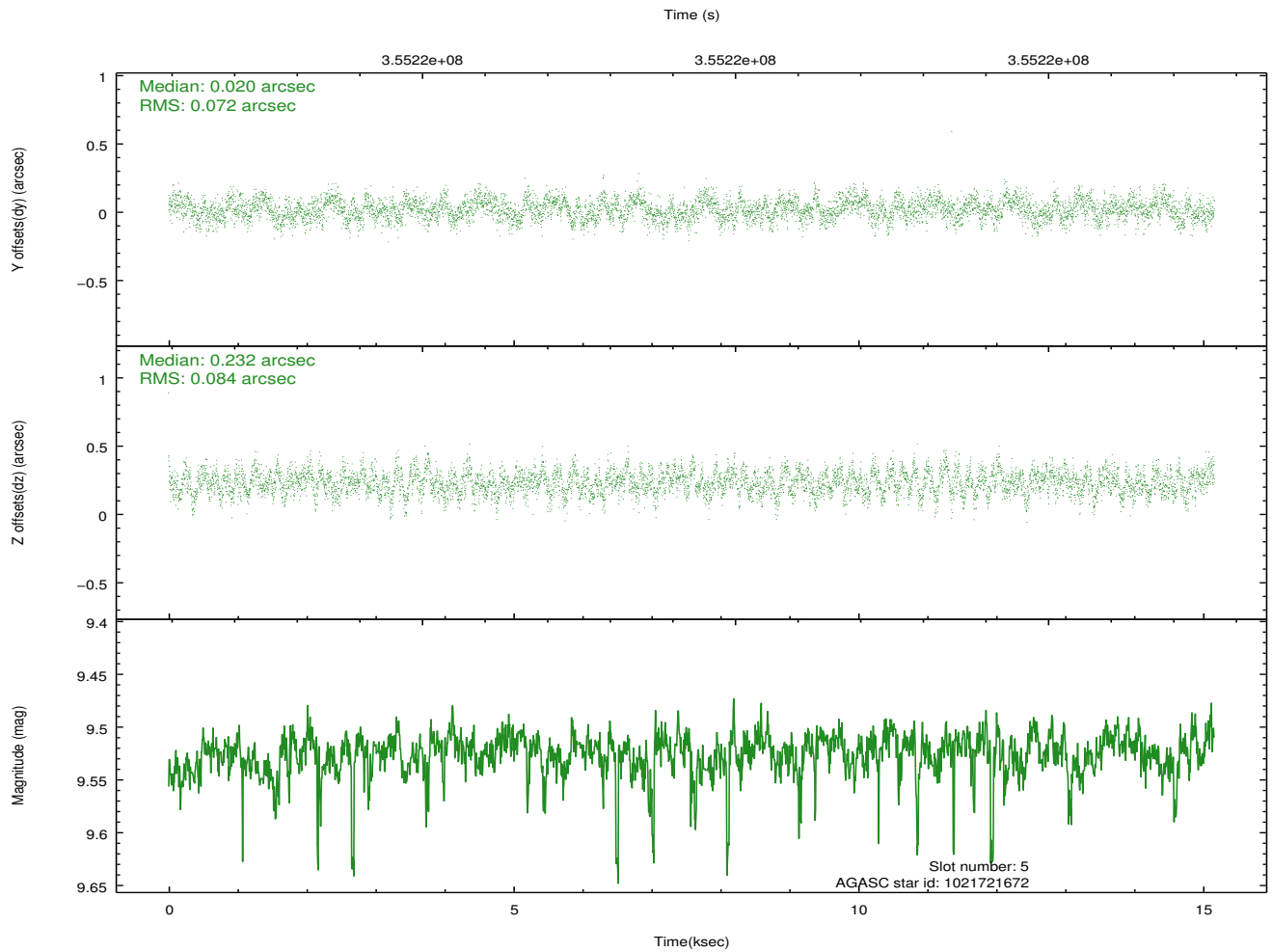
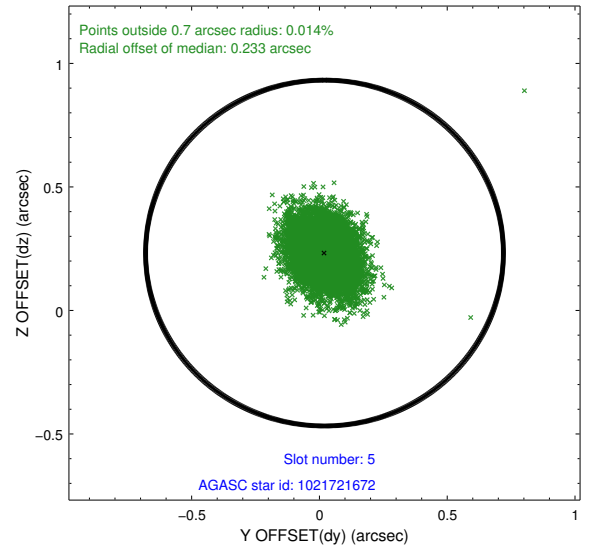
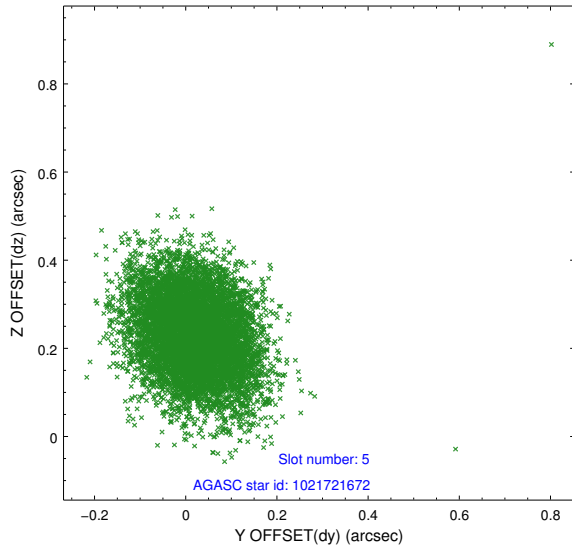
2.4.1 Slot 3



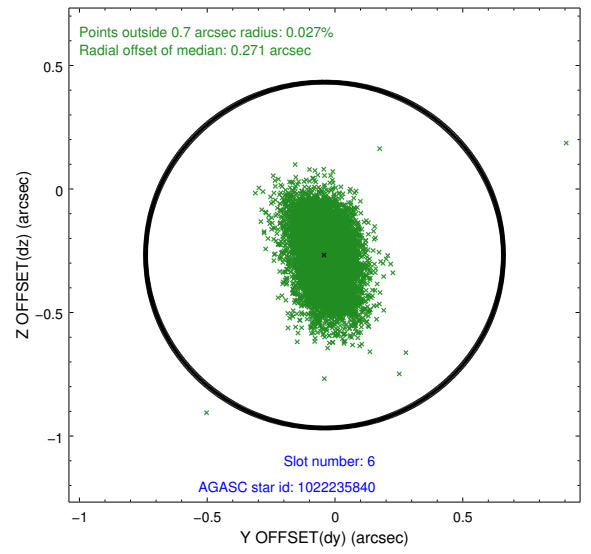
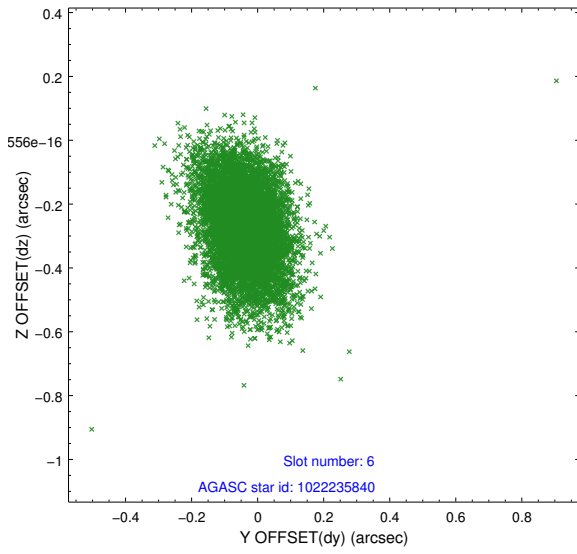
2.4.2 Slot 4



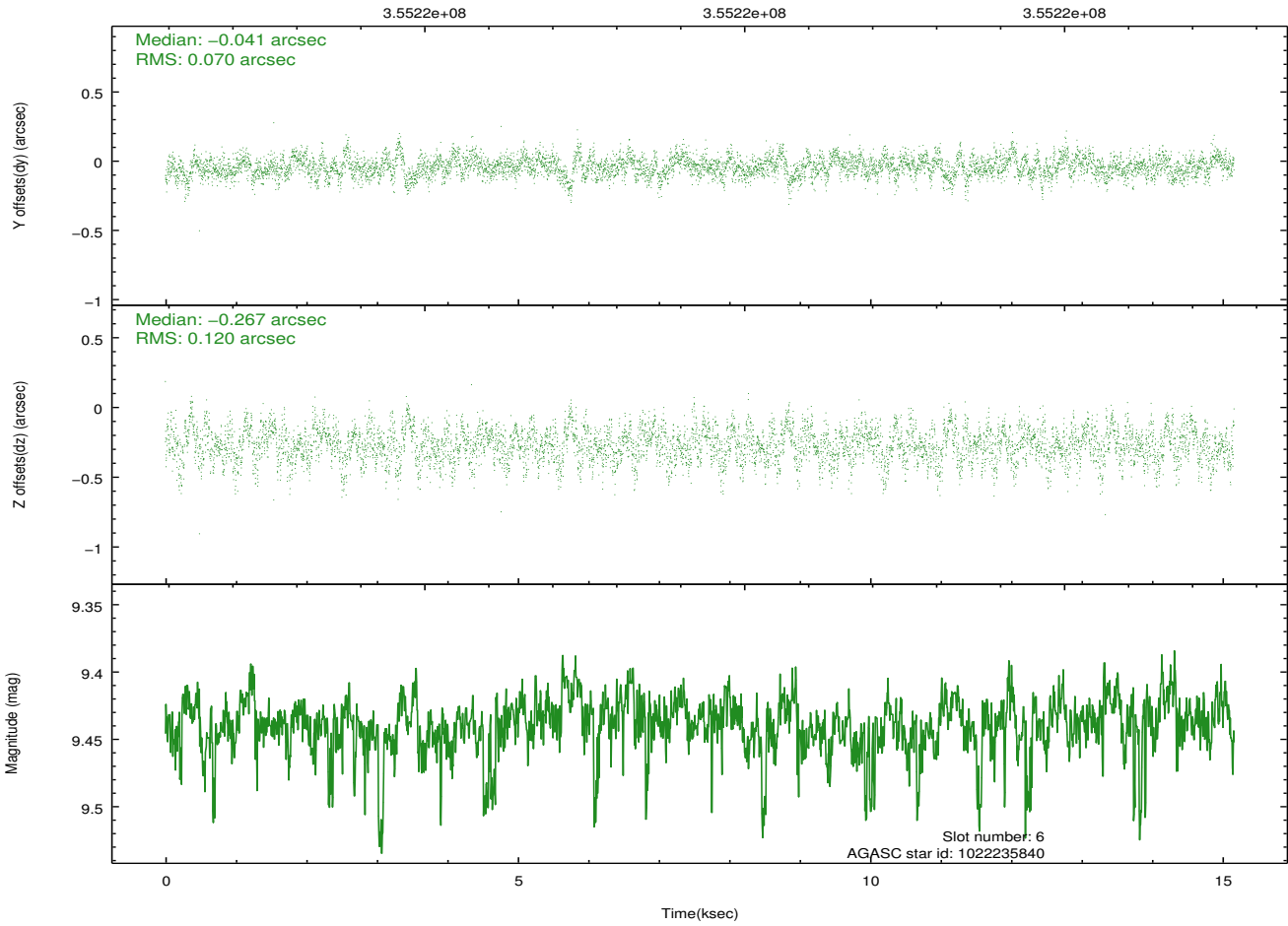
2.4.3 Slot 5



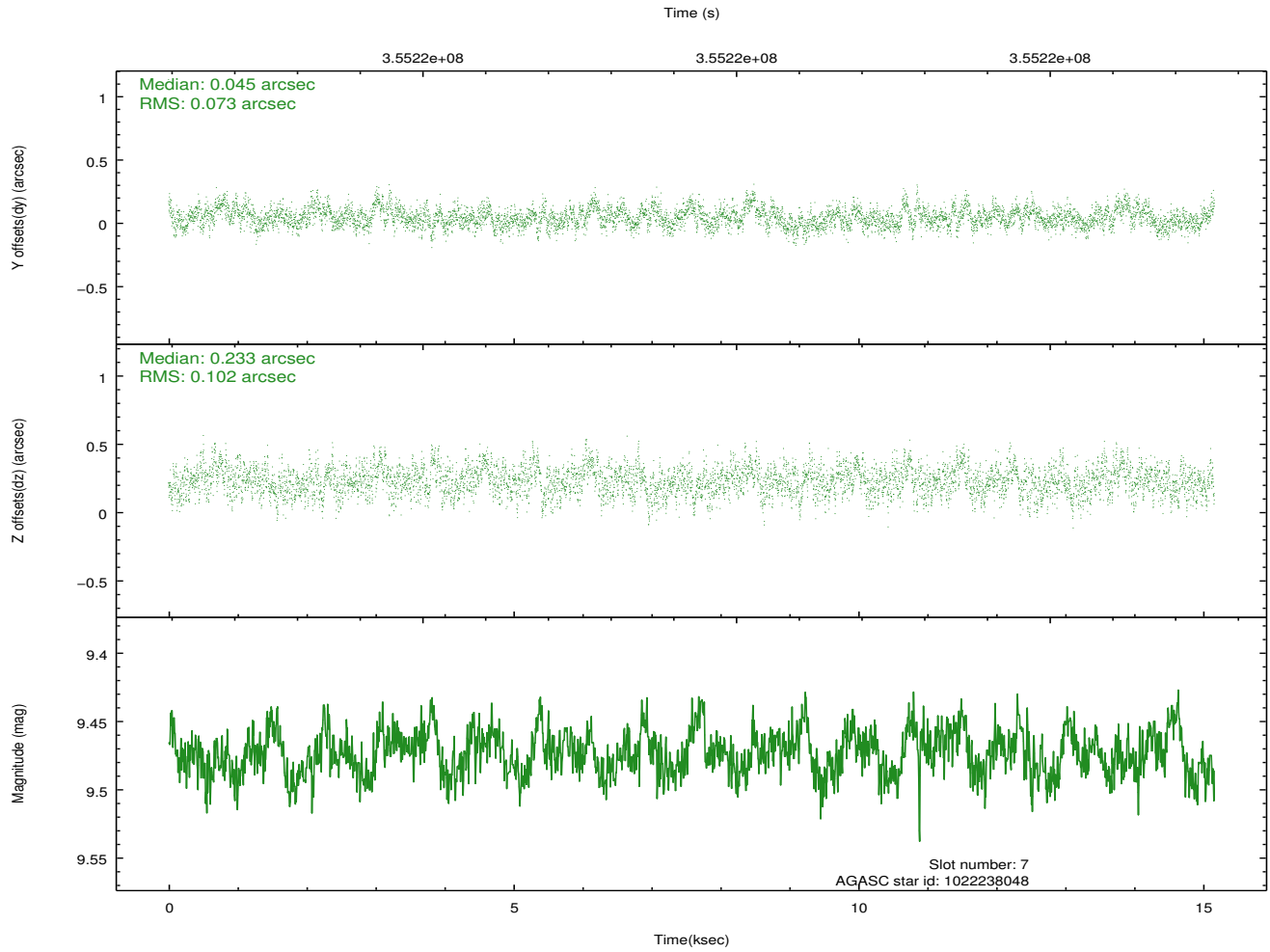
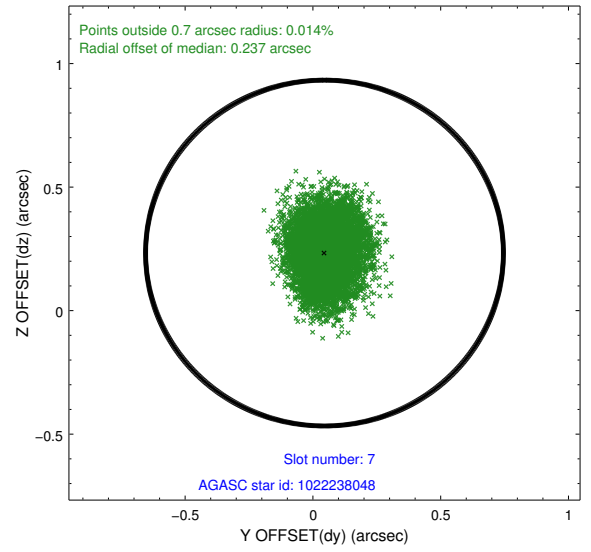
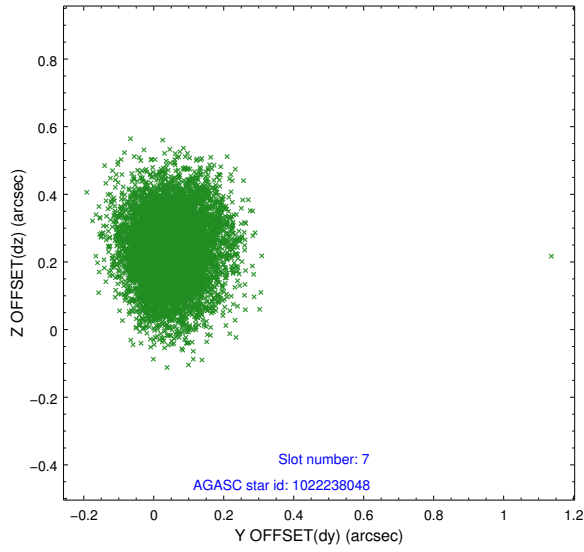
2.4.4 Slot 6



Time (s)

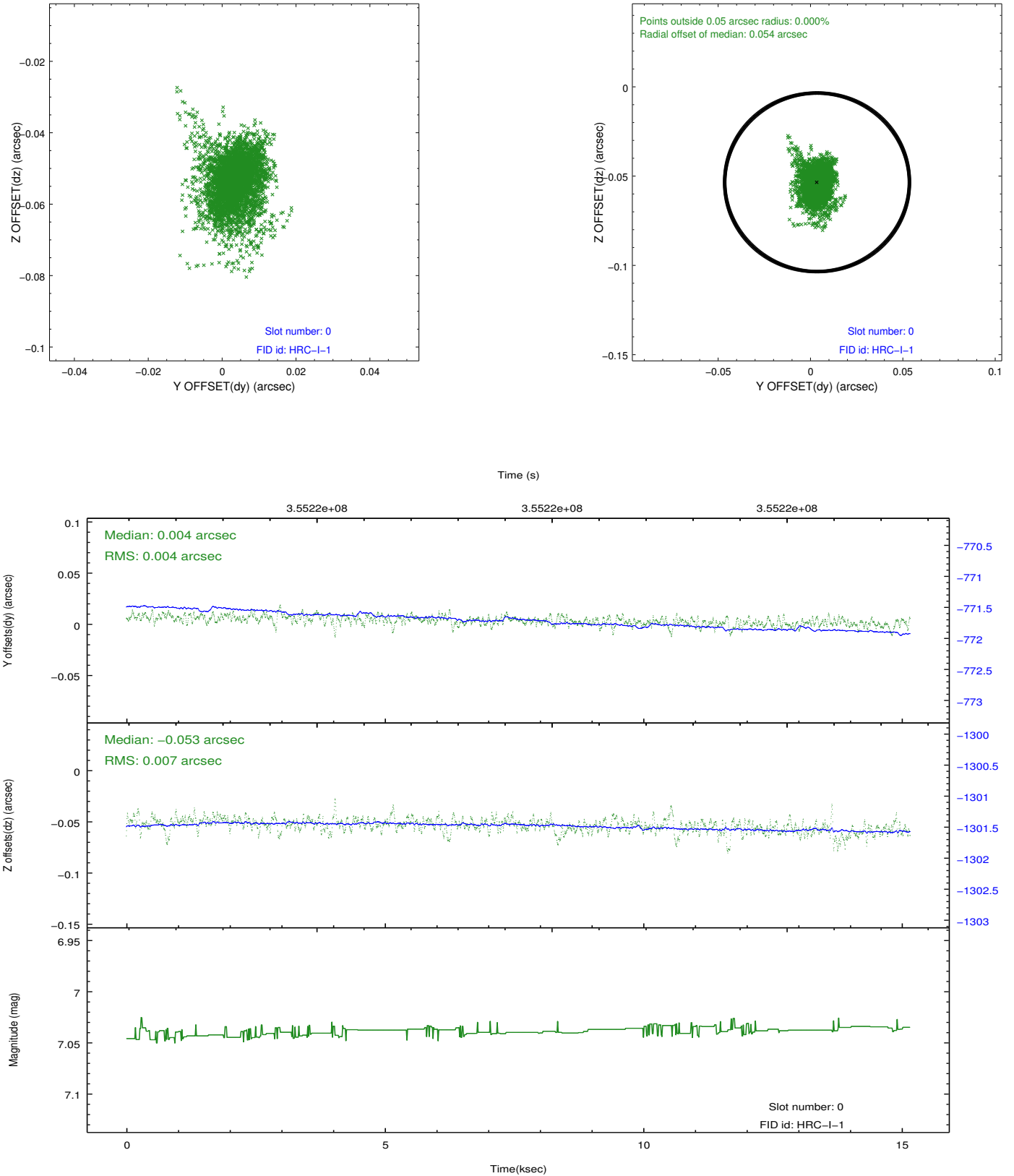


2.4.5 Slot 7

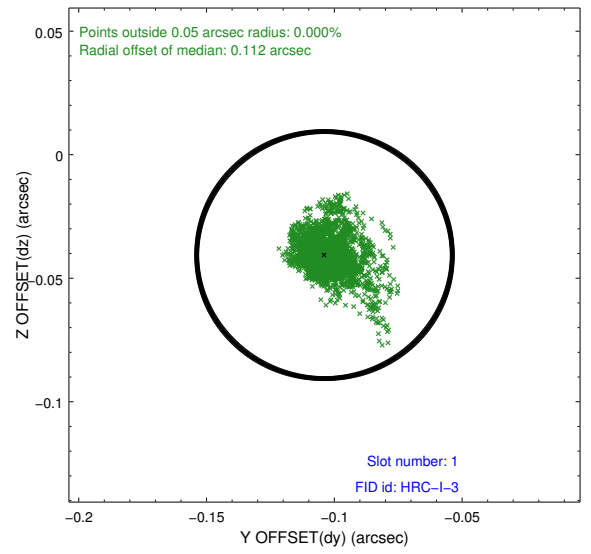
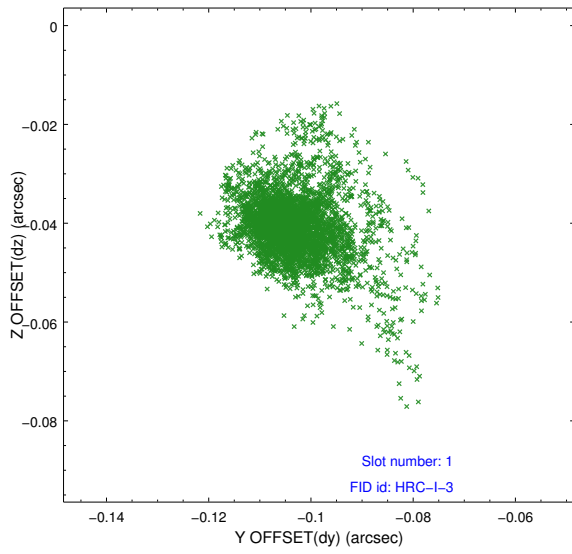


2.5 FID Slots

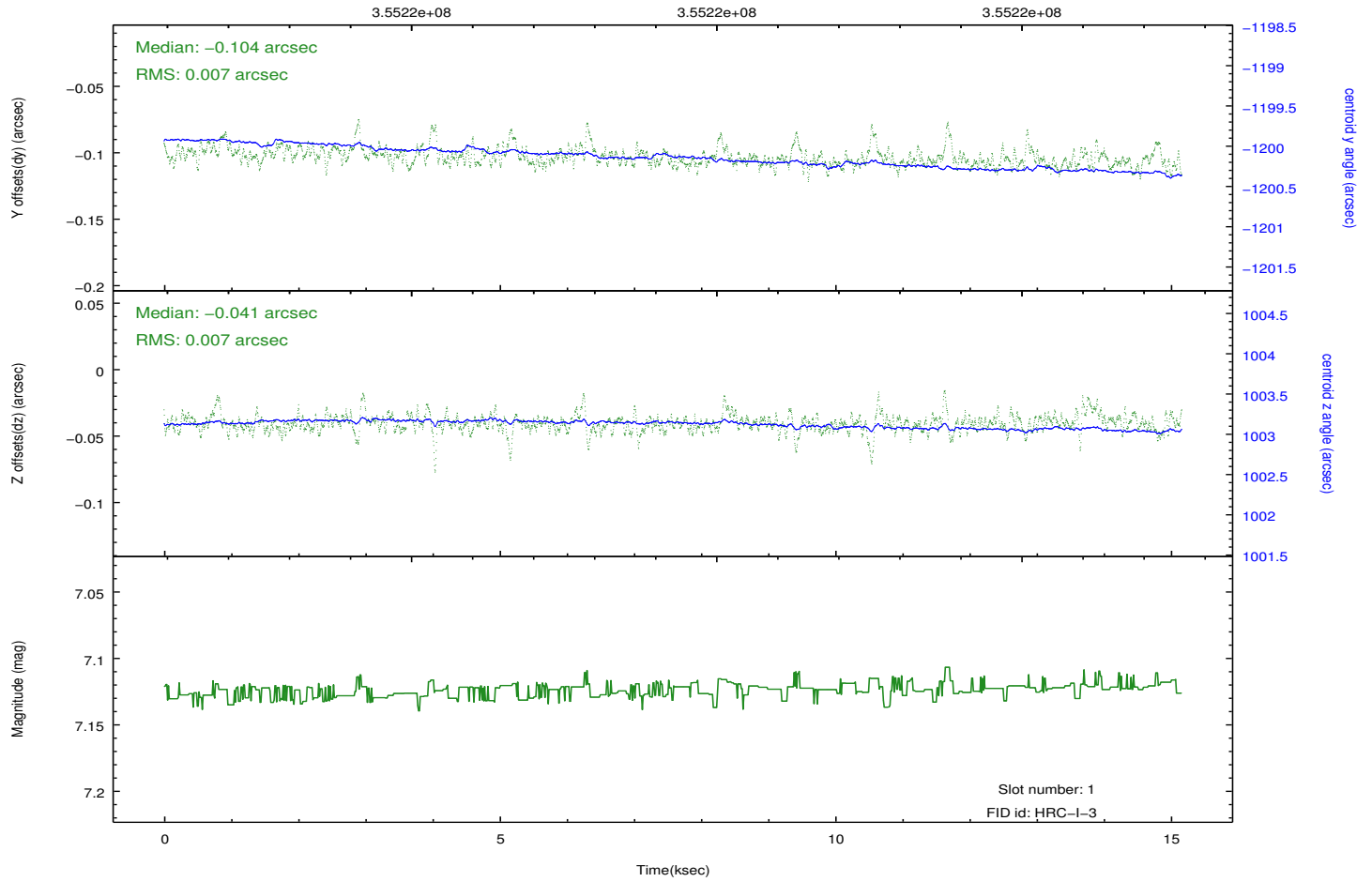
2.5.1 Slot 0



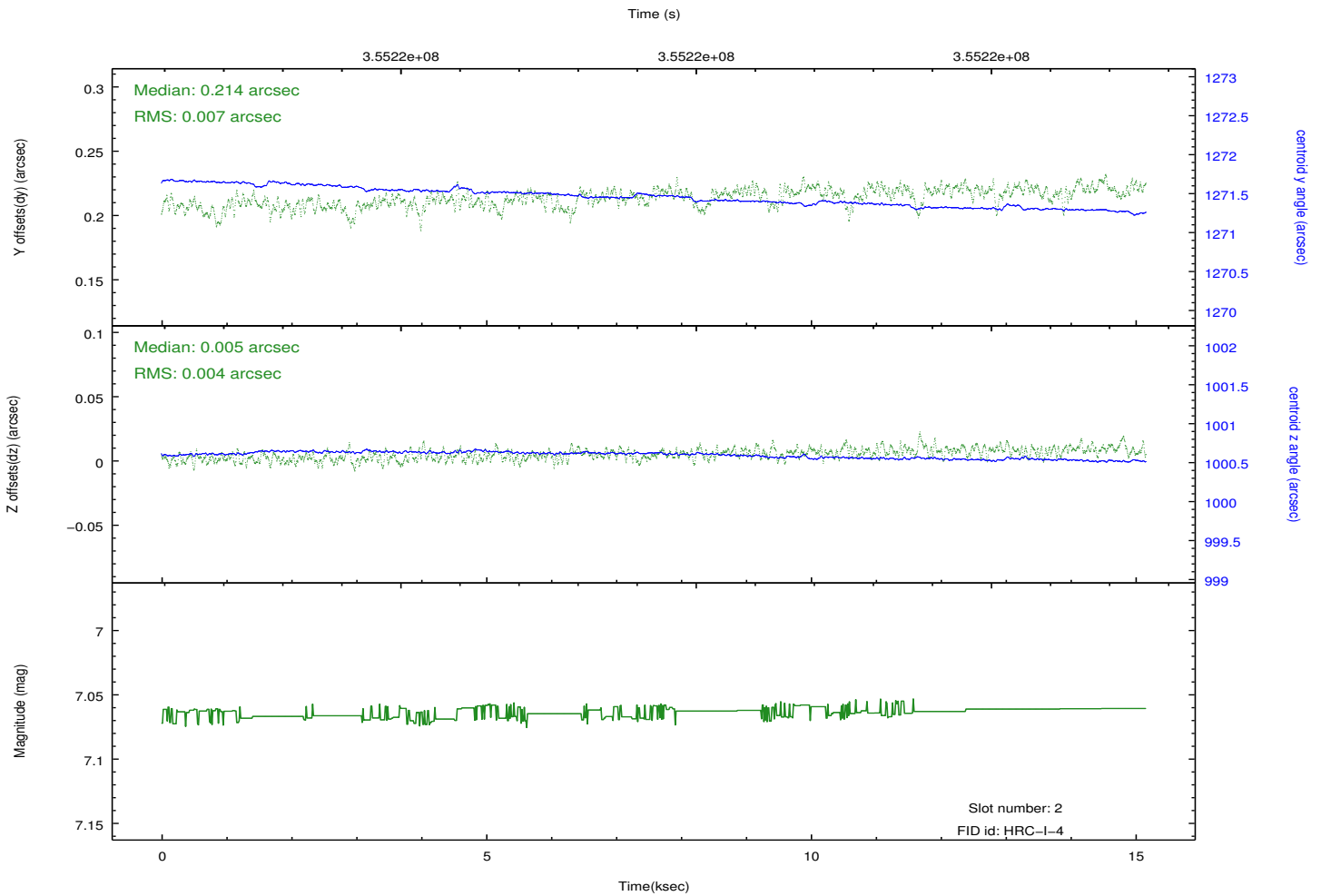
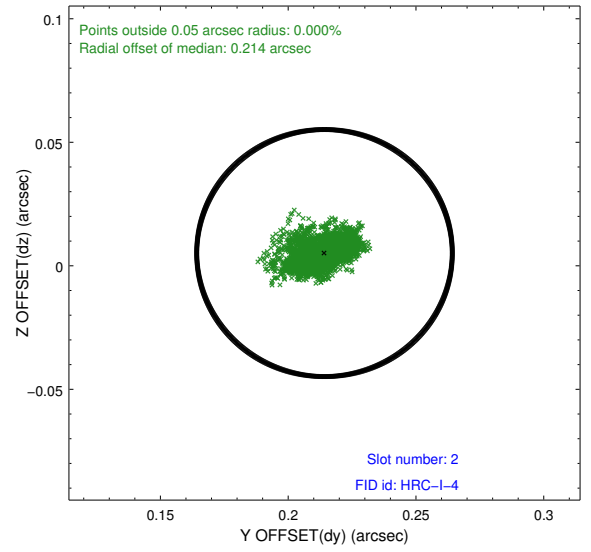
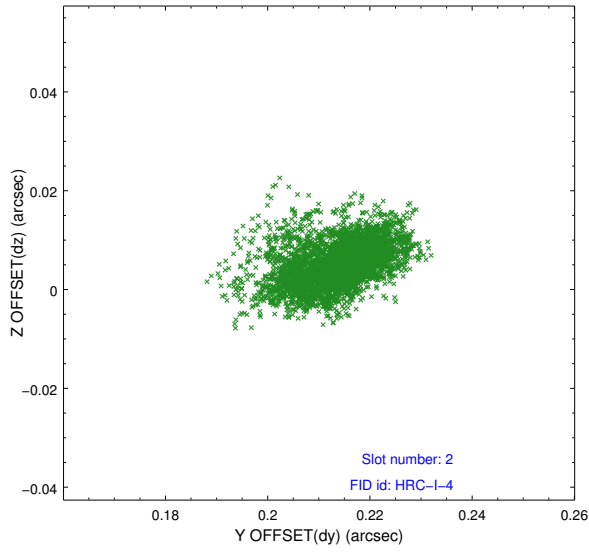
2.5.2 Slot 1



Time (s)



2.5.3 Slot 2



A Summary

A.1 Status

V&V Scientist	Jen Lauer
V&V Date (YYYY-MM-DD)	2012.08.20
V&V Edition	1
V&V Disposition and Status	OK
V&V Charge Time	15.163082

A.2 Comments