

V&V Reference Report

L2 ASCDS Version : 8.4.4

Observation 10447 - L2 Version 2
Chandra X-Ray Center

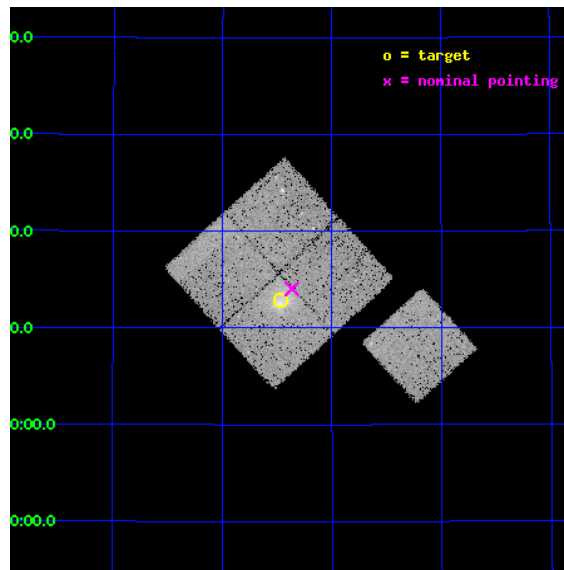
L2 Processing Date : May 31 2012

Contents

1	Front	2
2	OBI	3
2.1	OBI	3
2.1.1	Images	3
2.1.2	Bias	3
2.1.3	Parameters	4
2.1.4	Events	4
2.2	Compared Parameters	5
2.3	Aspect	6
2.4	Star Slots	9
2.4.1	Slot 3	9
2.4.2	Slot 4	10
2.4.3	Slot 5	11
2.4.4	Slot 6	12
2.4.5	Slot 7	13
2.5	FID Slots	14
2.5.1	Slot 0	14
2.5.2	Slot 1	15
2.5.3	Slot 2	16
A	Summary	17
A.1	Status	17
A.2	Comments	17

1 Front

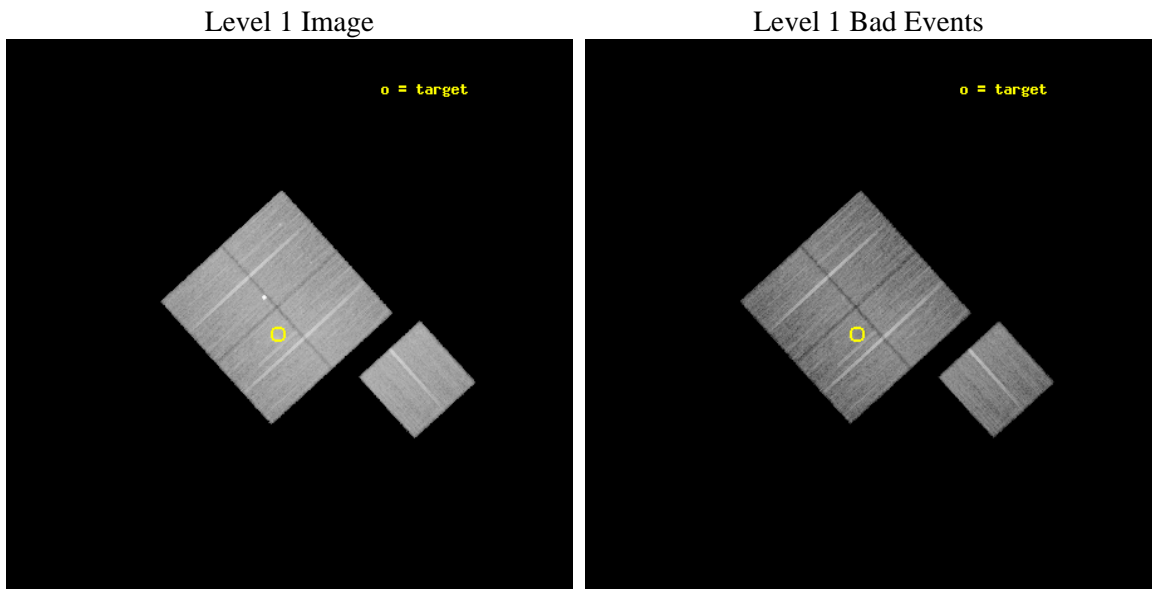
seq_num	800808	Sequence number
obs_id	10447	Observation id
title	The distribution and interactions of luminous and dark matter in strong-lensing clusters at $z > 0.3$	Proposal title
observer	Dr. Harald Ebeling	Principal investigator
object	MACSJ1218.4+4012	Source name
dtcycle	0	
cycle	P	events from which exps? Prim/Second/Both
ra_targ	184.616667	Observer's specified target RA [deg]
dec_targ	40.214167	Observer's specified target Dec [deg]
ra_nom	184.59143412658	Nominal RA [deg]
dec_nom	40.234161124805	Nominal Dec [deg]
roll_nom	137.72500388342	Nominal Roll [deg]
revision	2	Processing version of data
ontime	19133.200147152	Sum of GTIs [s]
livetime	18883.210801572	Livetime [s]
ontime0	19126.918146372	Sum of GTIs [s]
ontime1	19133.200147152	Sum of GTIs [s]
ontime2	19130.059146821	Sum of GTIs [s]
ontime3	19133.200147152	Sum of GTIs [s]
ontime6	19130.059126854	Sum of GTIs [s]
l2events	74014	Number of level 2 events



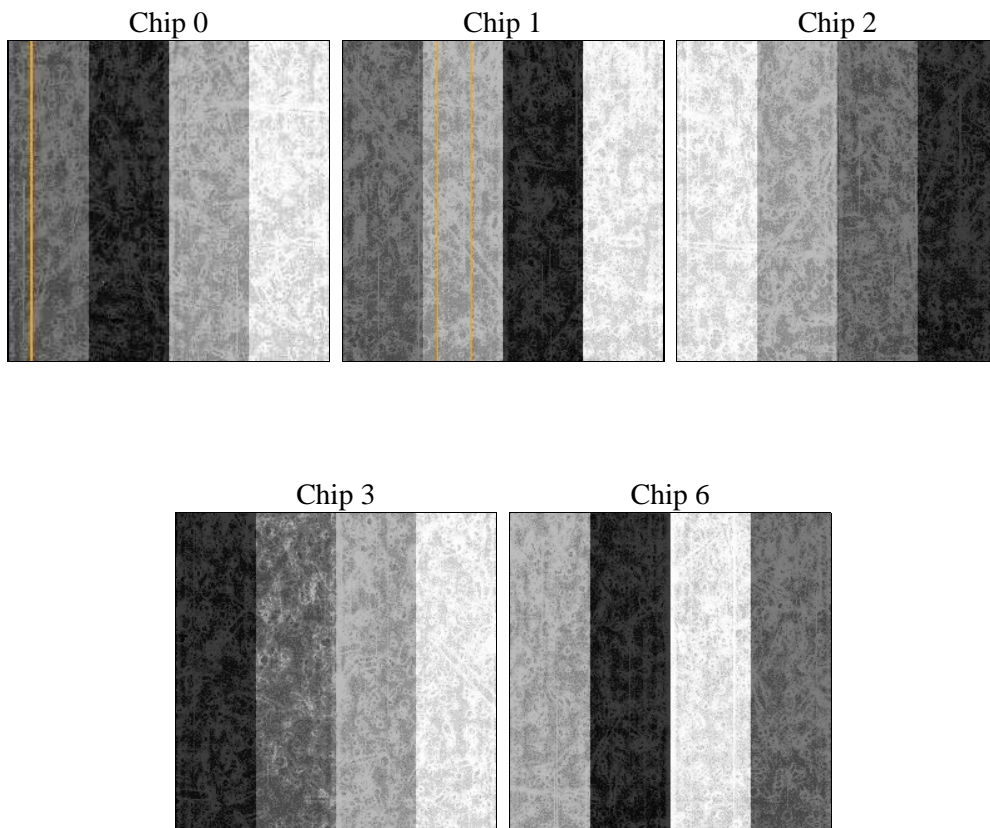
2 OBI

2.1 OBI

2.1.1 Images



2.1.2 Bias



2.1.3 Parameters

obi_num	0	Obi number	sched_exp_time	19000.000000	[s] Scheduled observation exposure time
ascdsver	8.4.4	Processing system revision	ontime	19133.200147152	Sum of GTIs [s]
caldbver	4.4.9	 	ontime0	19126.918146372	Sum of GTIs [s]
date	2012-05-31T15:06:48	Date and time of file creation	ontime1	19133.200147152	Sum of GTIs [s]
revision	2	Processing version of data	ontime2	19130.059146821	Sum of GTIs [s]
			ontime3	19133.200147152	Sum of GTIs [s]
			ontime6	19130.059126854	Sum of GTIs [s]
			l1events	865228	Number of level 1 events

2.1.4 Events

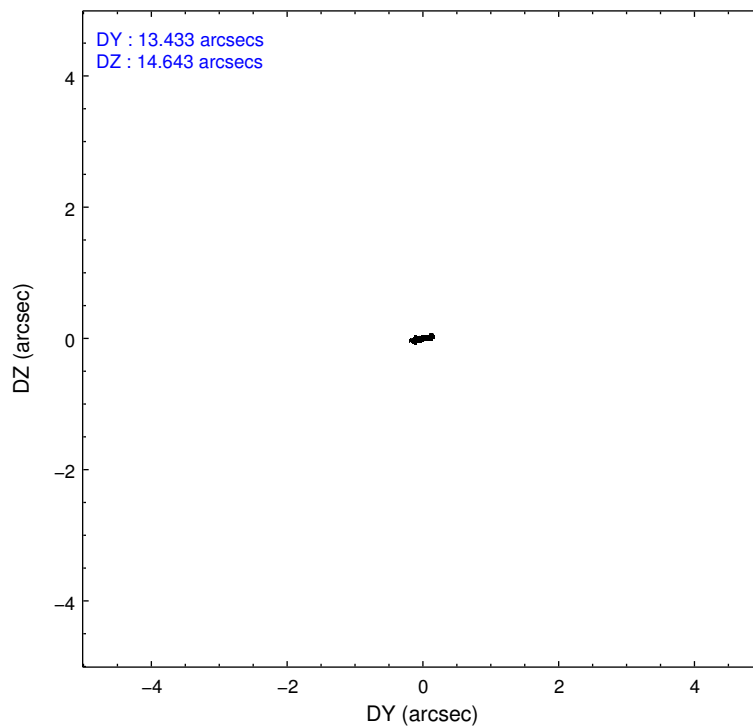
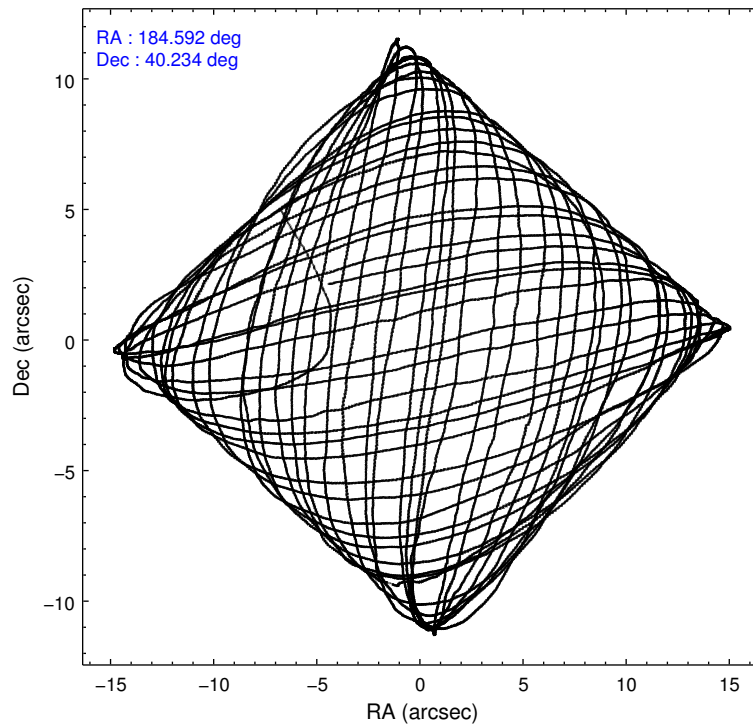
	ccd 0	ccd 1	ccd 2	ccd 3	ccd 6
level 1 events	164884	169778	180116	174440	176010
rejected events	147921	145792	163967	154578	158992
rejected %	89%	85%	91%	88%	90%

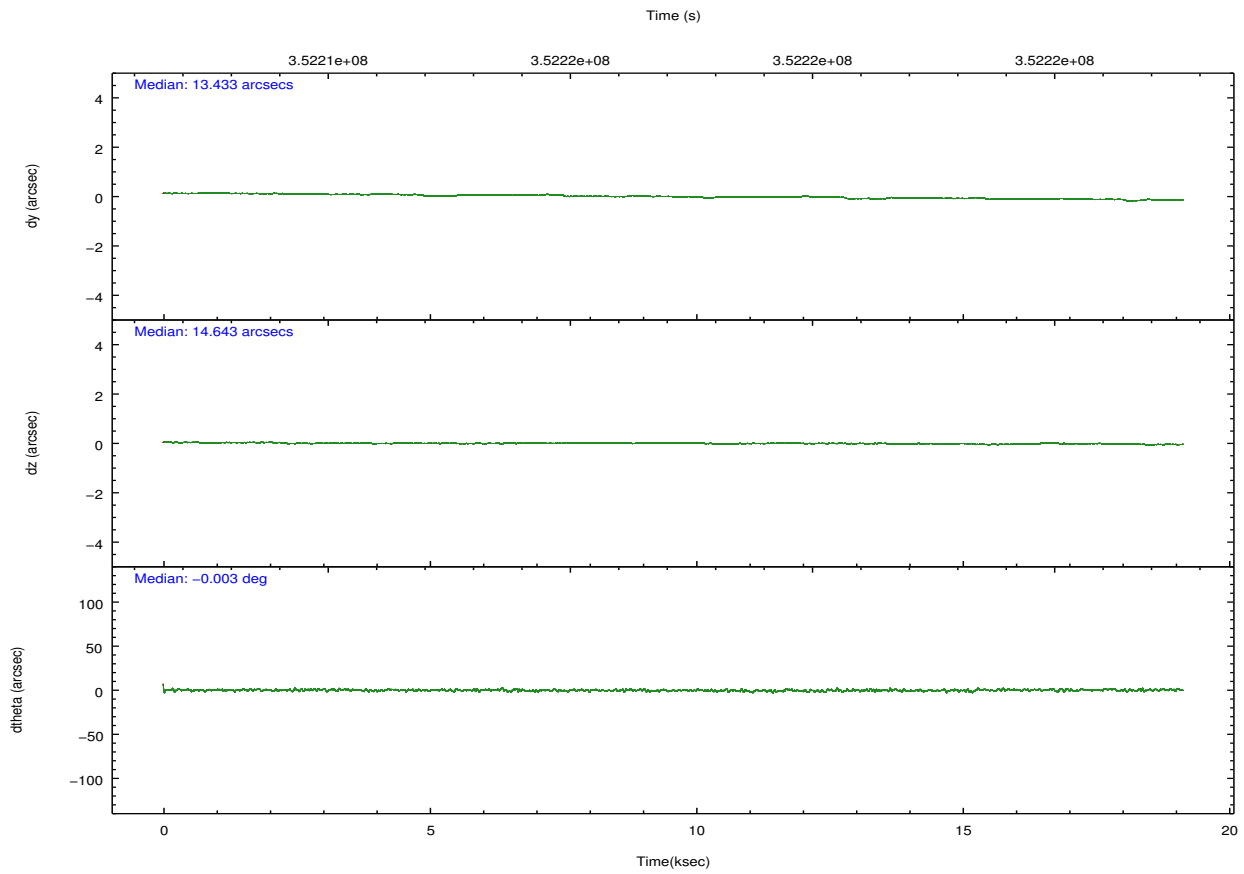
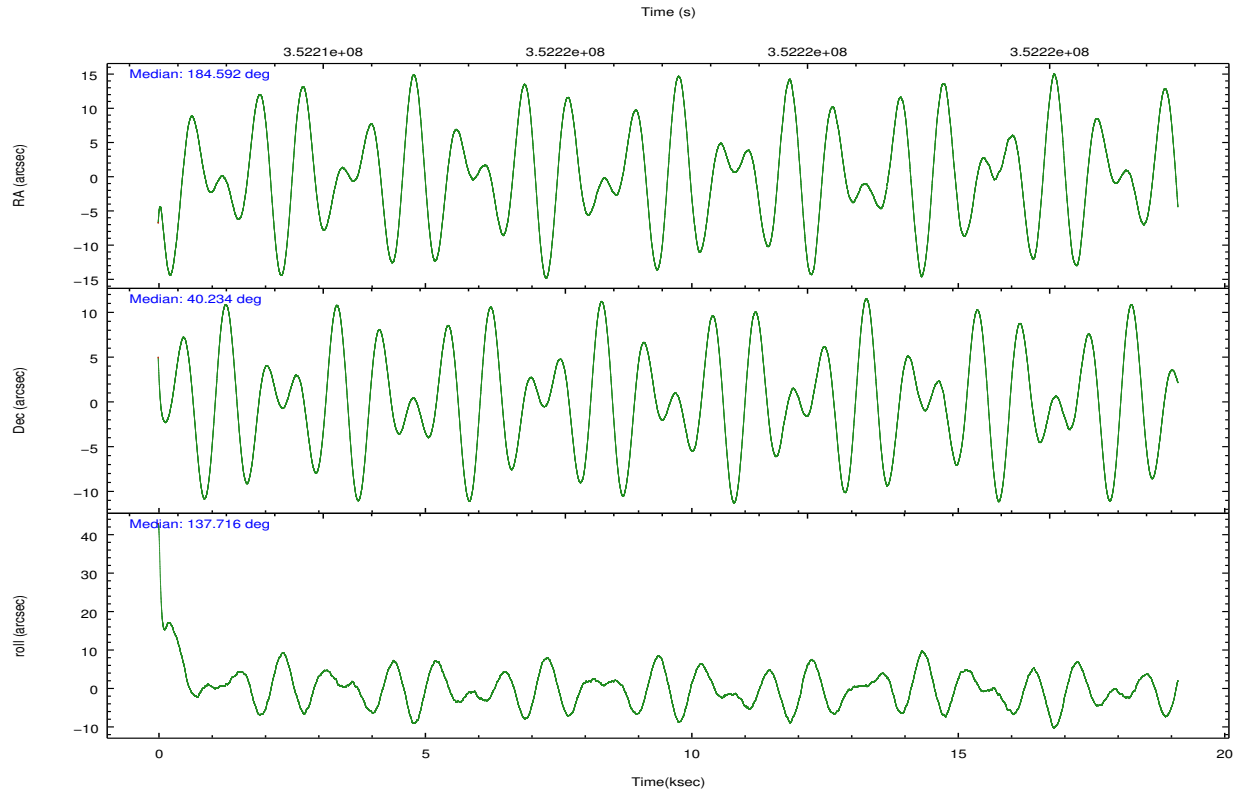
	ccd 0	ccd 1	ccd 2	ccd 3	ccd 6
grade 0 events	6416	13079	6315	9474	6471
	3%	7%	3%	5%	3%
grade 1 events	114	134	107	116	93
	0%	0%	0%	0%	0%
grade 2 events	4441	4543	4143	4086	4122
	2%	2%	2%	2%	2%
grade 3 events	1977	2079	1821	1998	1929
	1%	1%	1%	1%	1%
grade 4 events	1907	2063	1846	1996	1910
	1%	1%	1%	1%	1%
grade 5 events	6344	6867	5990	7172	7123
	3%	4%	3%	4%	4%
grade 6 events	3450	4029	3228	3513	3919
	2%	2%	1%	2%	2%
grade 7 events	140235	136984	156666	146085	150443
	85%	80%	86%	83%	85%

2.2 Compared Parameters

Parameter	Planned	Actual	Parameter	Planned	Actual
Instrument	ACIS	ACIS	Obspar format version number	7	7
Detector	ACIS-01236	ACIS-01236	Obspar file type	PREDICTED	ACTUAL
Grating	NONE	NONE	Obspar update status	NONE	UPDATED
Data mode	VFAINT	VFAINT	Number of optional ACIS chips dropped	0	0
Observation mode	POINTING	POINTING	On-chip summing requested	N	N
[deg] Pointing RA	184.626671	184.5914341265771	Subarray requested	NONE	NONE
[deg] Pointing Dec	40.228425	40.23416112480474	Alternating exposures requested	N	N
[deg] Pointing Roll	137.493539	137.7250038834167	[s] Primary exposure time	0.000000	3.1
[mm] SIM focus pos	-0.782348	-0.7809083437167272			
[mm] SIM defocus	0	0.001439871863259334			
[mm] SIM translation stage pos	-229.442463	-229.4438428438578			
[mm] SIM translation stage offset	-4.15	-4.148610159071865			
[s] Observation start time (MET)	352207674.184000	352205939.9729			
Observation start date	2009-02-28T11:26:48	2009-02-28T10:58:59			
[s] Observation end time (MET)	352226674.184000	352227334.28646			
Observation end date	2009-02-28T16:43:28	2009-02-28T16:55:34			
Read mode	TIMED	TIMED			

2.3 Aspect



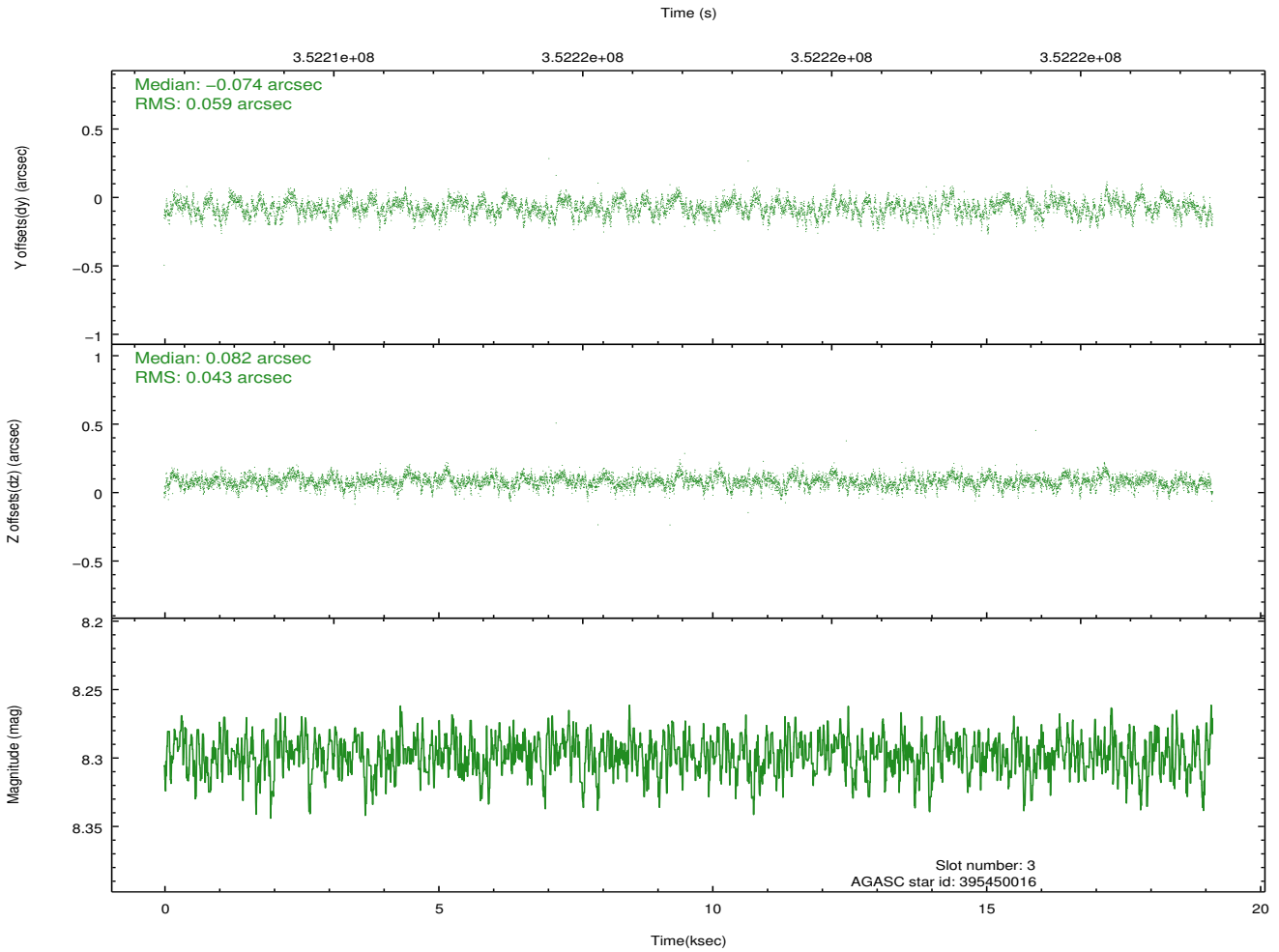
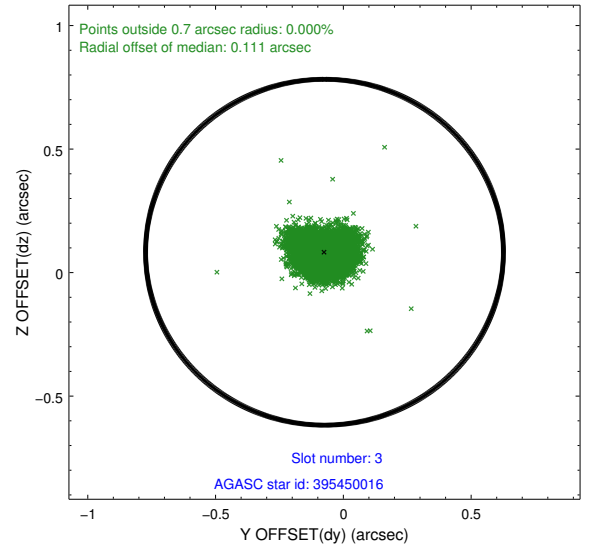
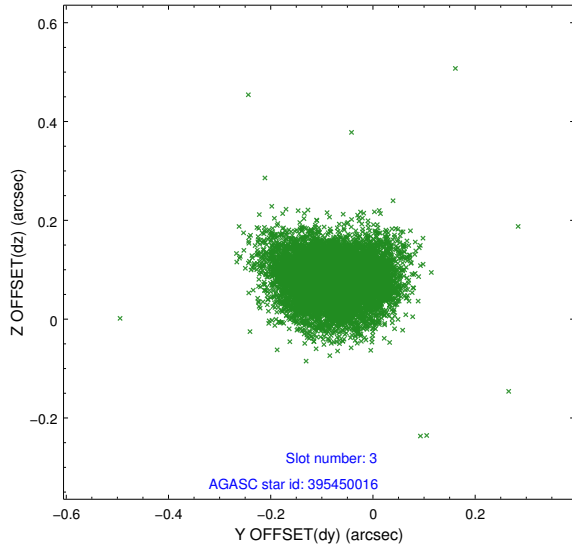


Slot Statistics

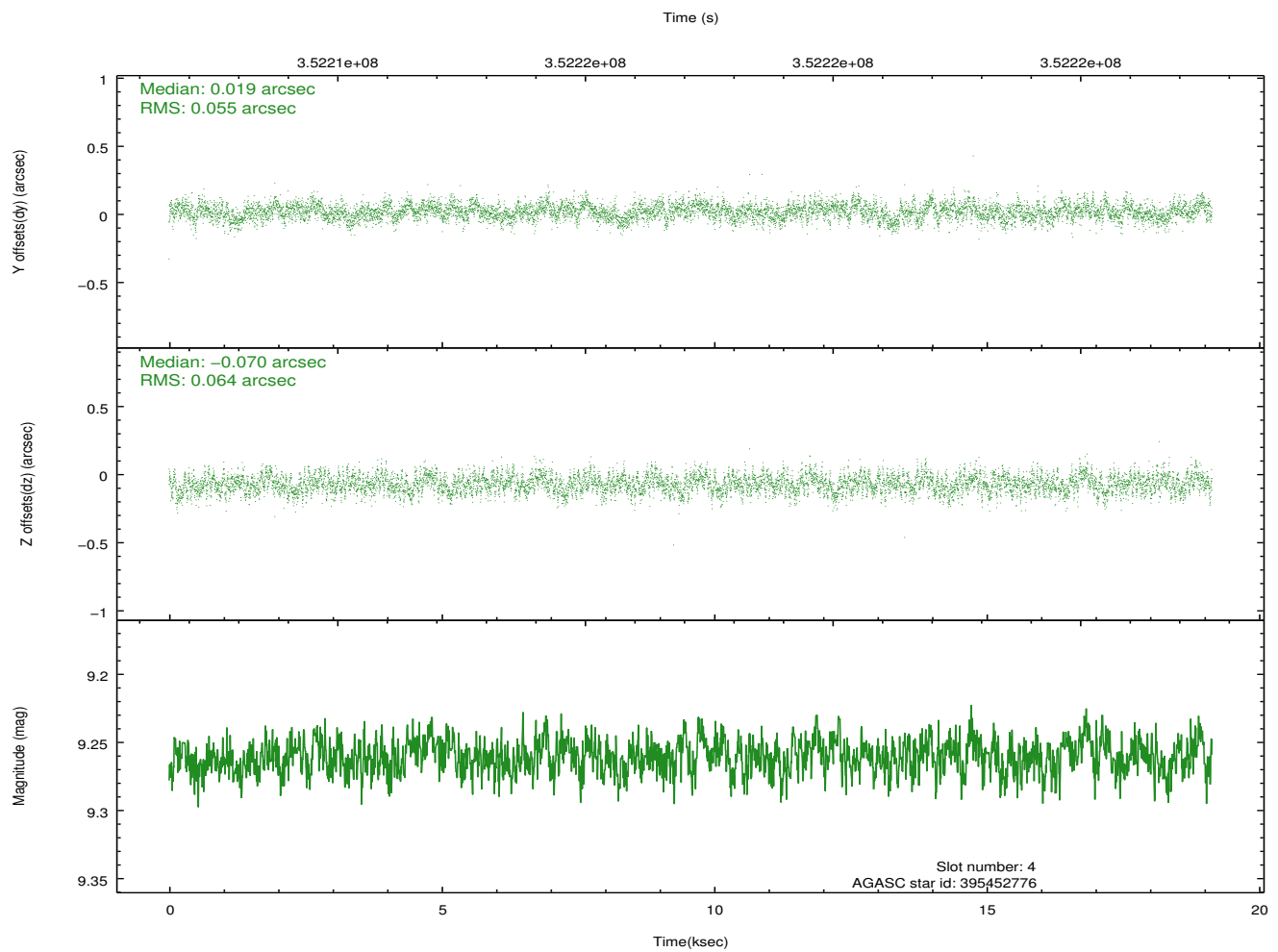
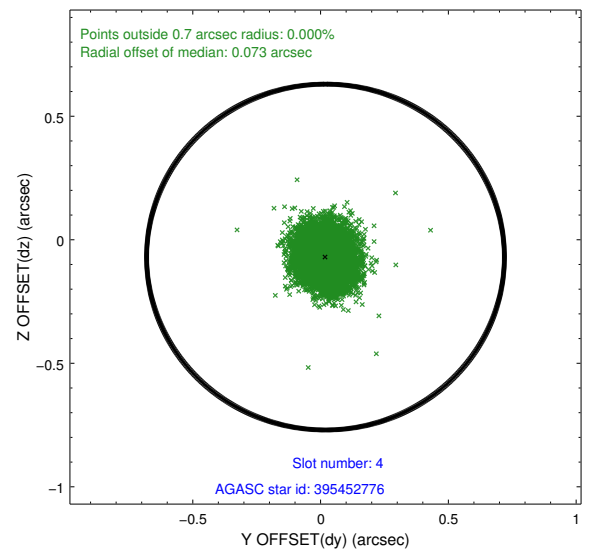
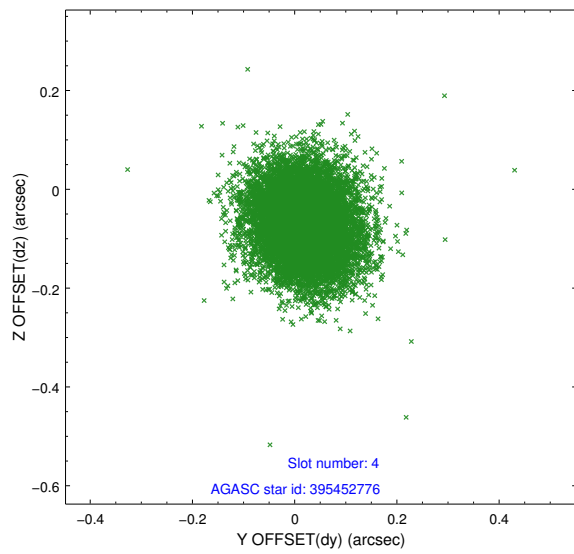
slot	status	id	mag	n_pts	med_dy	med_dz	dr1	dr2	ra	dec	mean_y	mean_z
0	FID	ACIS-I-1	7.10	4668	0.026	-0.022	0.009	0.015	0.000000	0.000000	926.04	-923.35
1	FID	ACIS-I-2	7.03	4667	-0.195	-0.030	0.006	0.011	0.000000	0.000000	-768.38	-929.40
2	FID	ACIS-I-4	6.99	4667	0.071	0.119	0.006	0.011	0.000000	0.000000	2145.60	977.02
3	GUIDE	395450016	8.30	9329	-0.074	0.082	0.077	0.125	184.649839	40.916370	1627.38	-1867.84
4	GUIDE	395452776	9.26	9323	0.019	-0.070	0.090	0.144	184.310111	39.827181	-330.88	1655.60
5	GUIDE	395454552	7.08	9335	-0.015	0.037	0.060	0.098	184.776872	40.312788	-98.16	-502.22
6	GUIDE	395456352	8.43	9332	0.037	-0.061	0.063	0.105	184.853411	39.624699	-1930.42	1177.55
7	GUIDE	395458000	9.40	9319	0.032	0.009	0.097	0.160	184.602977	39.801316	-991.03	1178.08

2.4 Star Slots

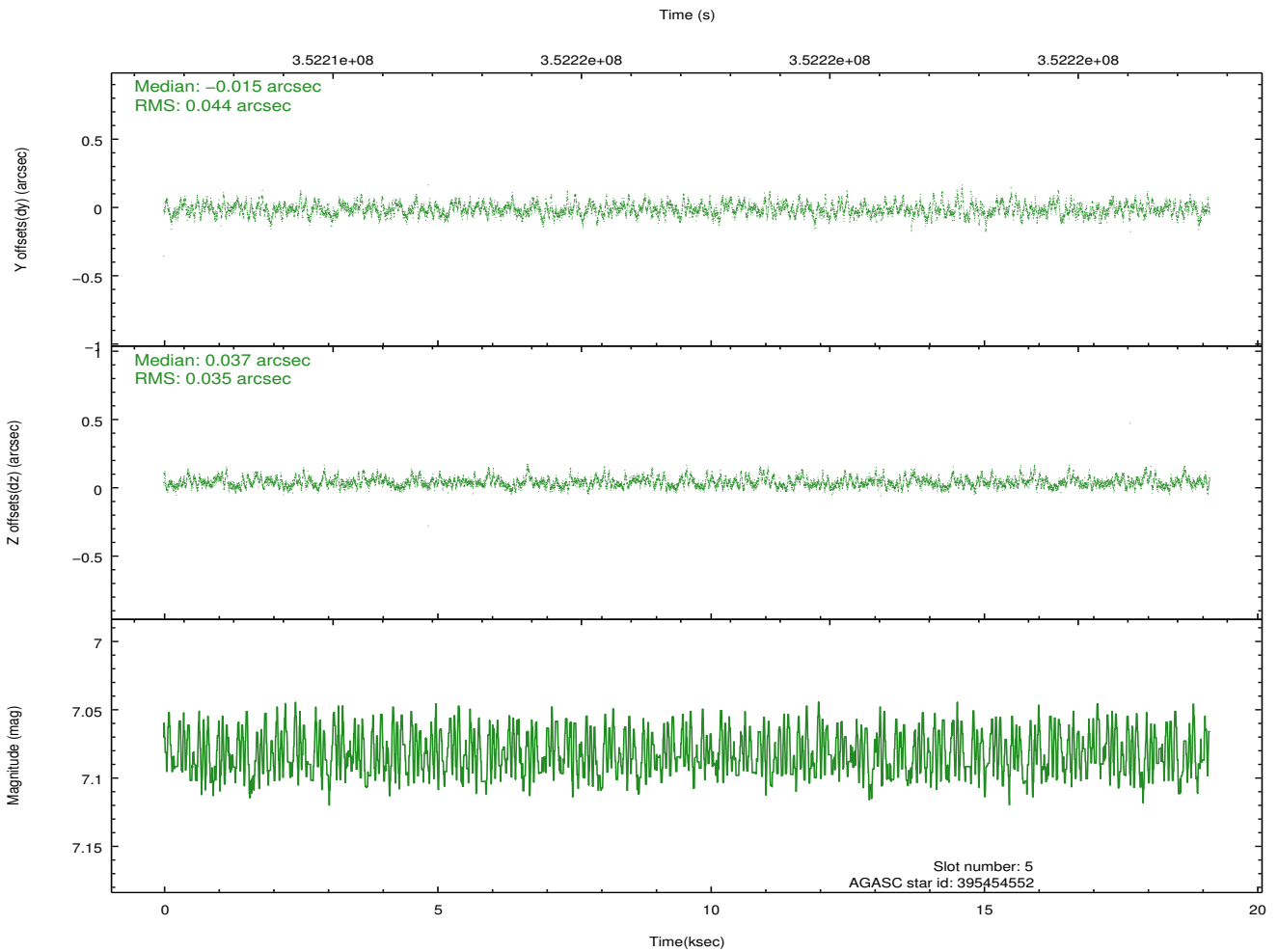
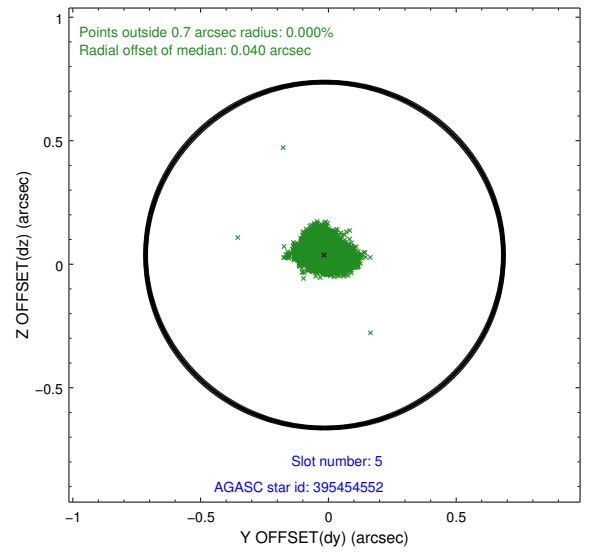
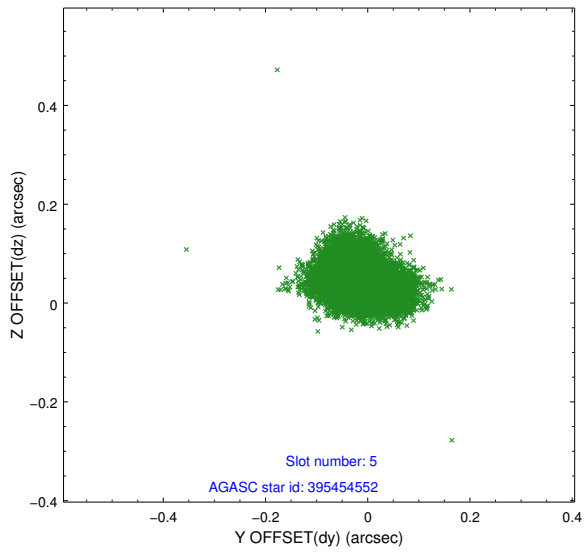
2.4.1 Slot 3



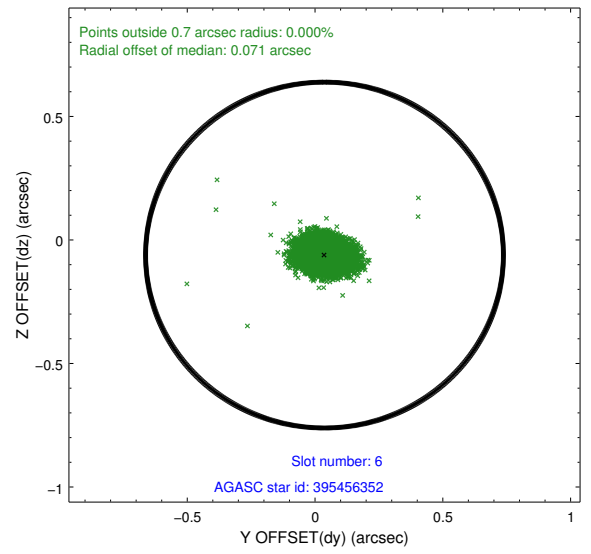
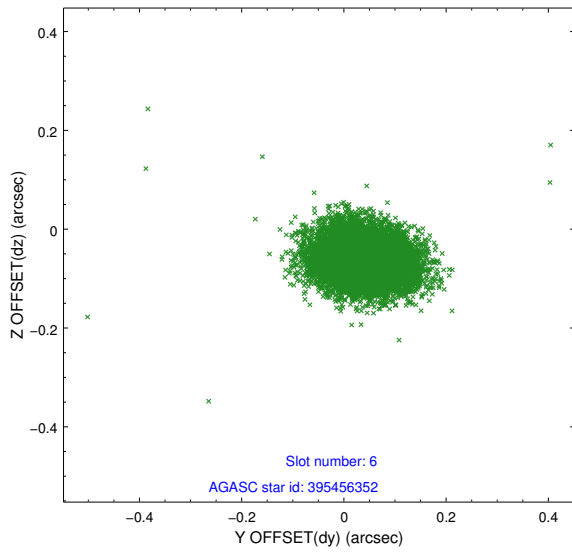
2.4.2 Slot 4



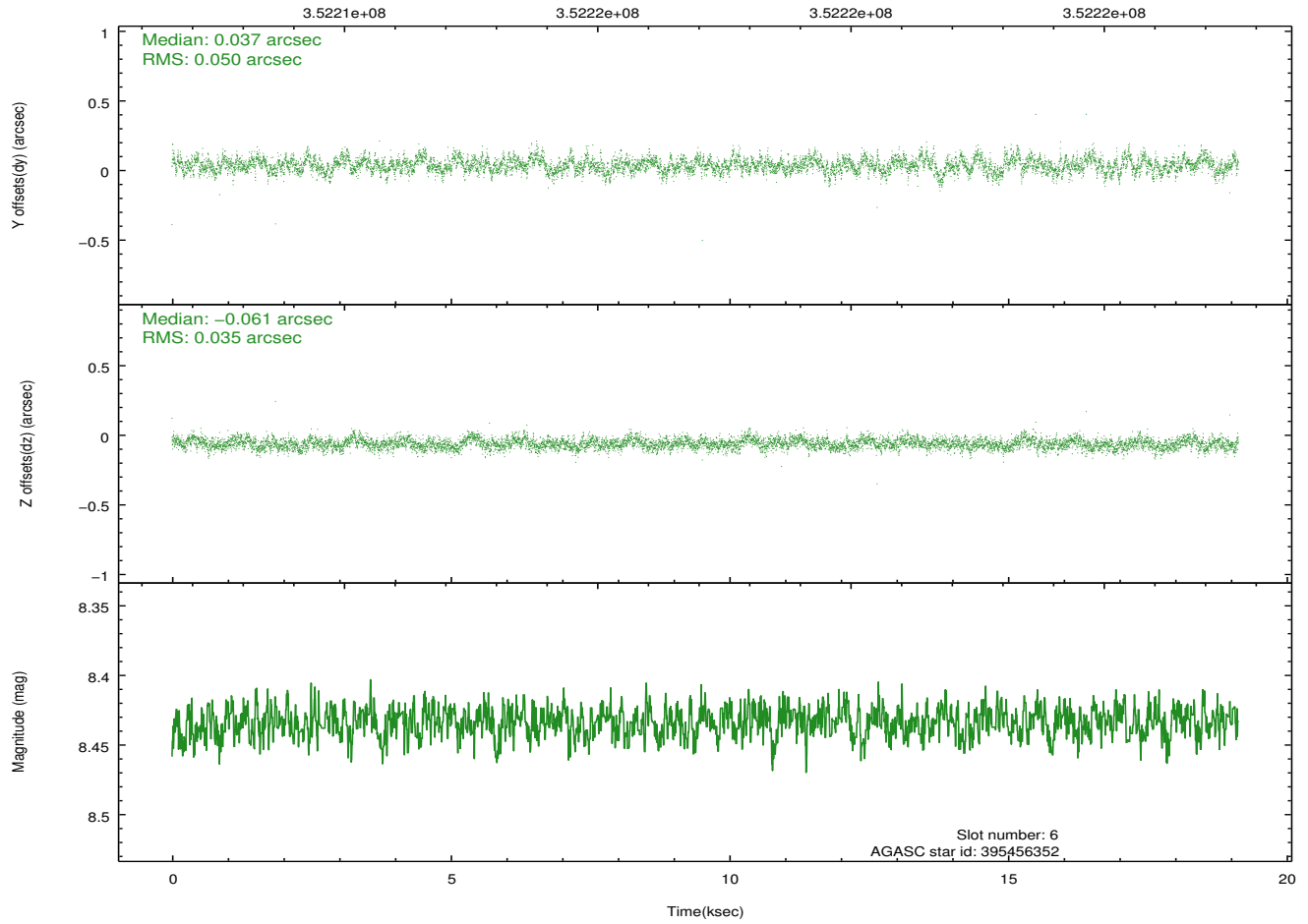
2.4.3 Slot 5



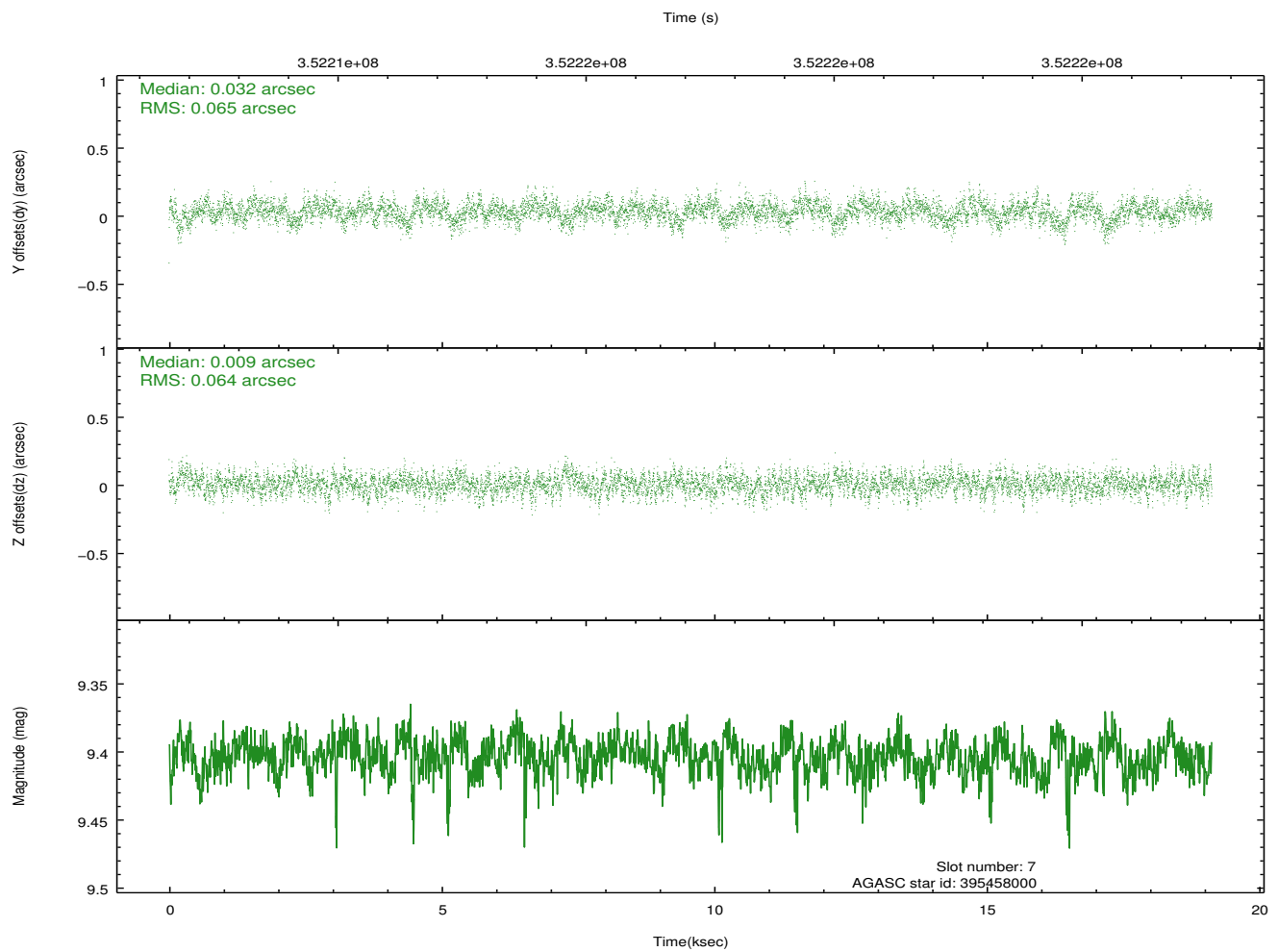
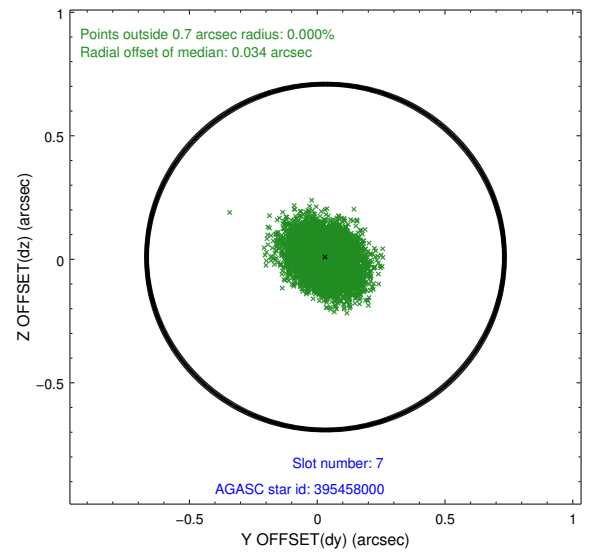
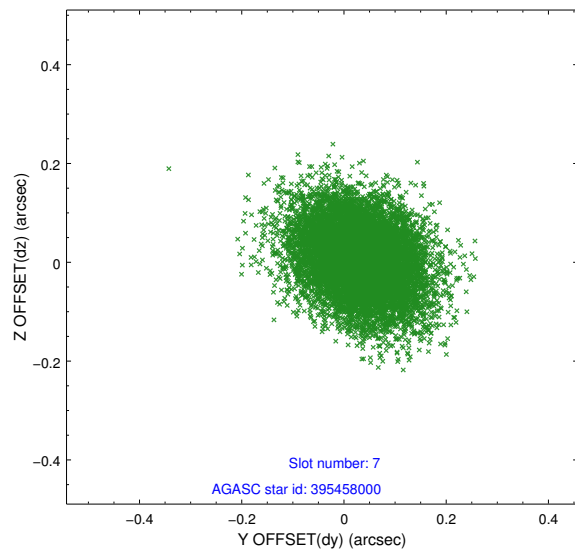
2.4.4 Slot 6



Time (s)

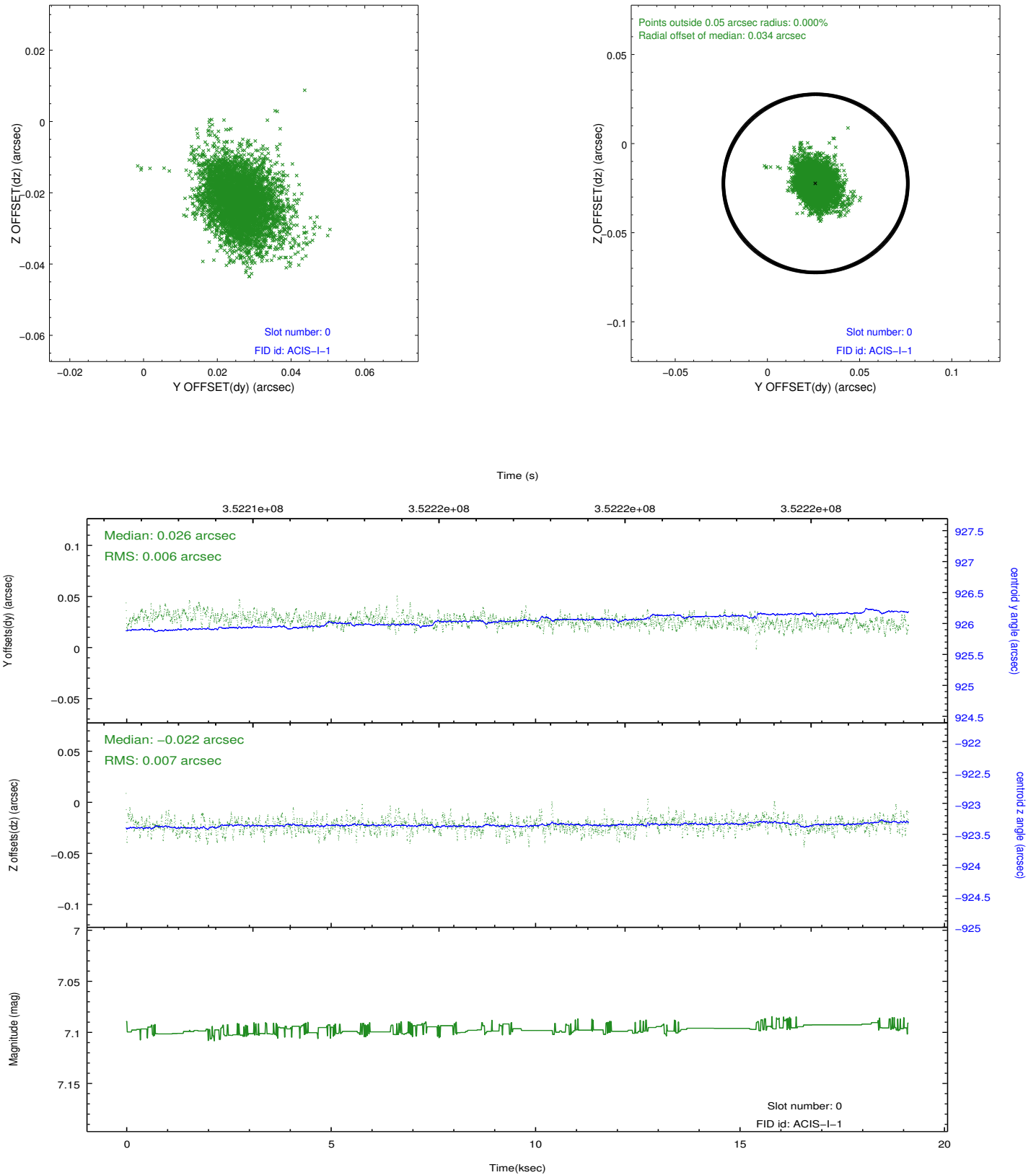


2.4.5 Slot 7

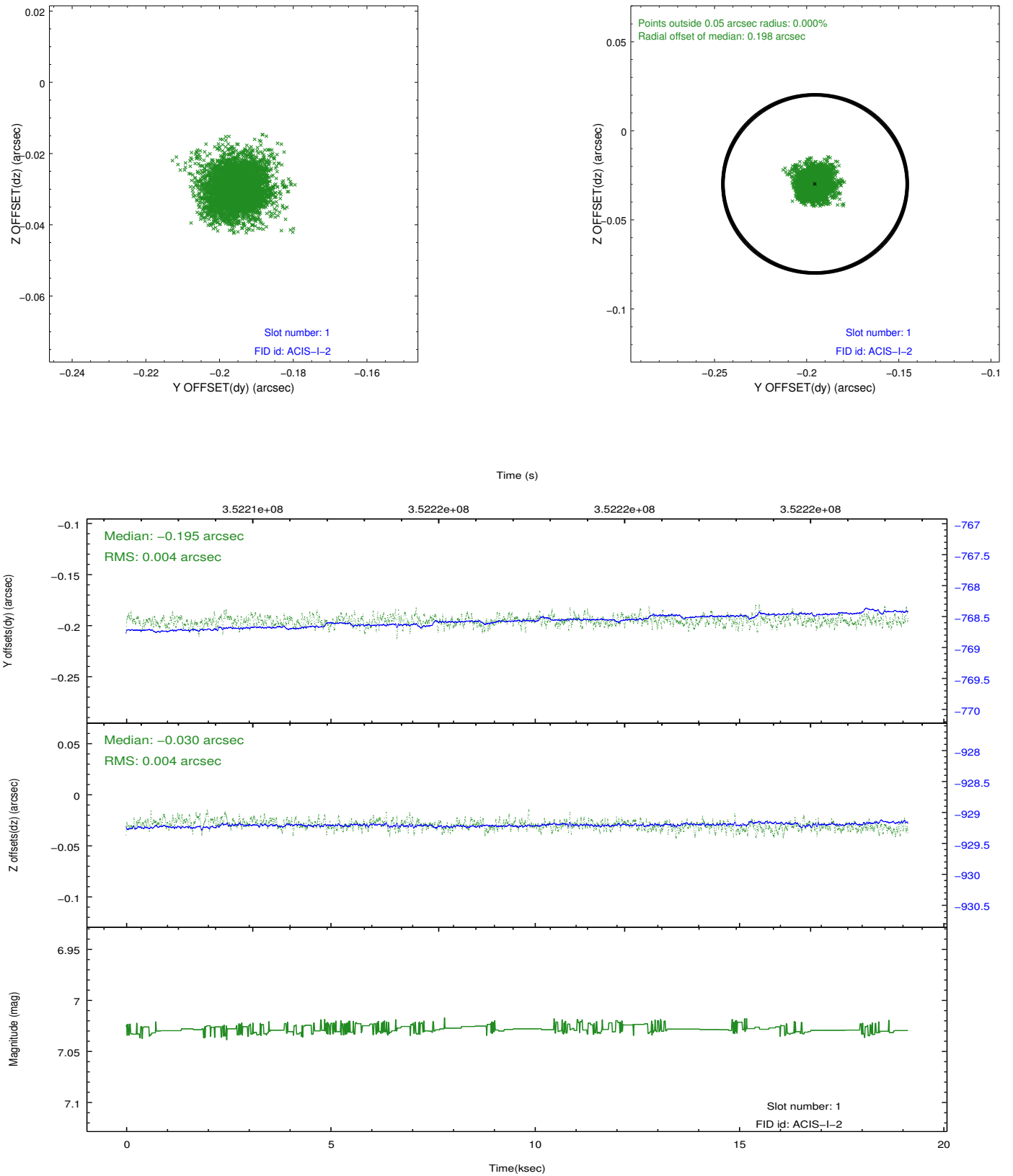


2.5 FID Slots

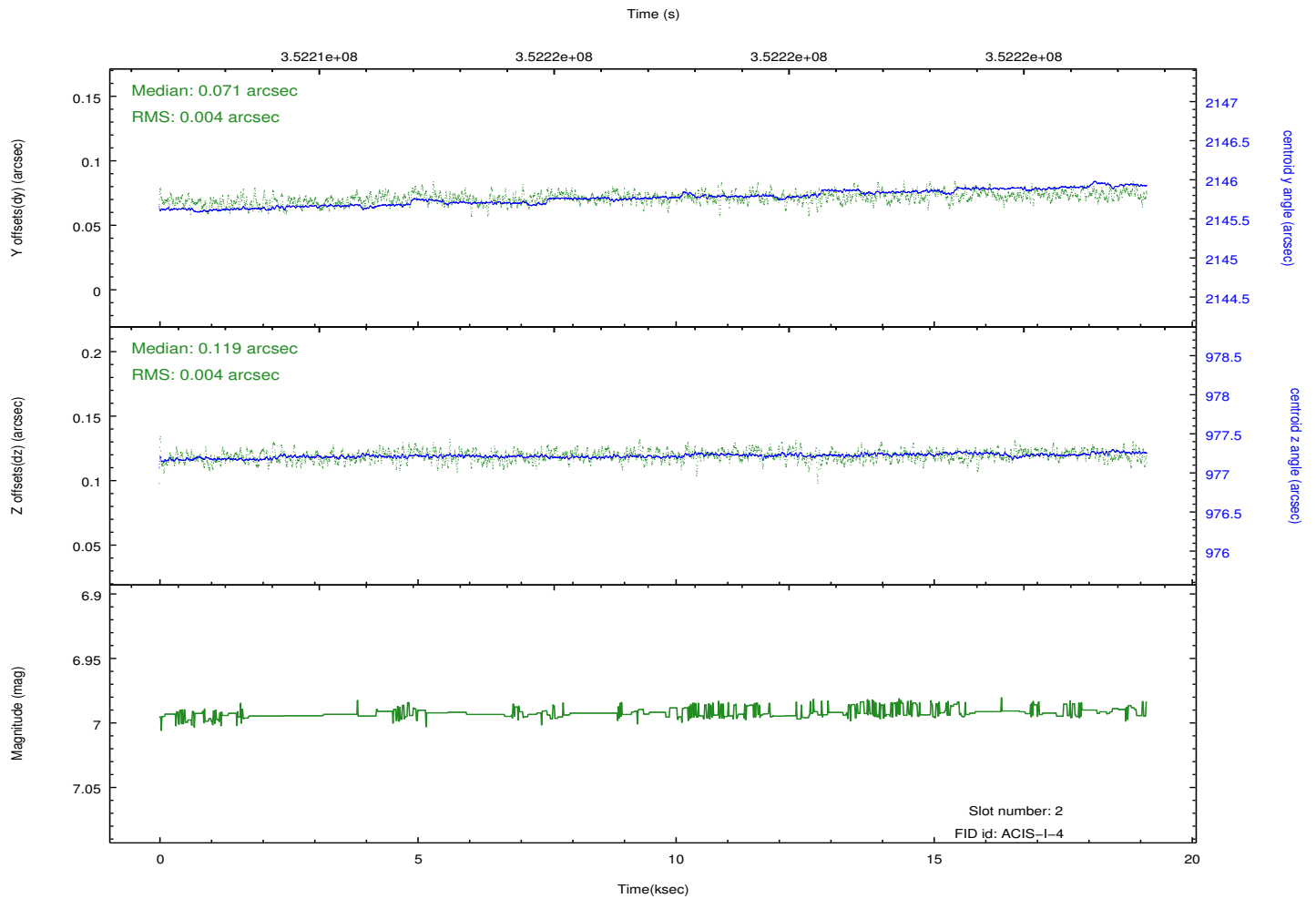
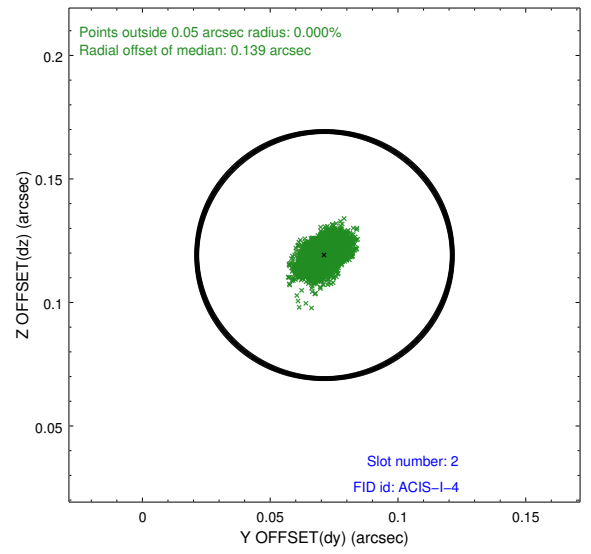
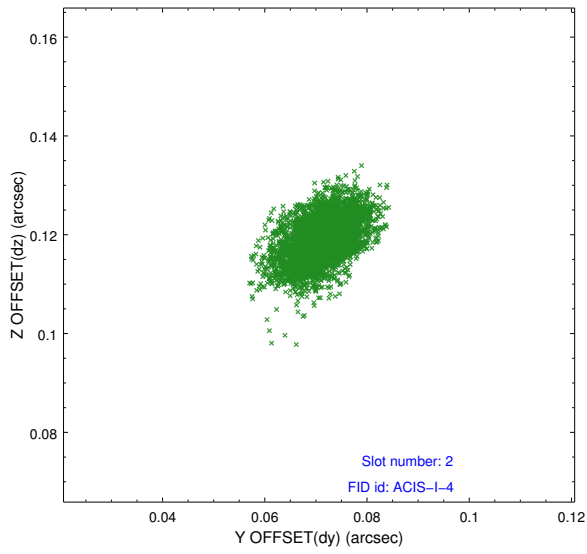
2.5.1 Slot 0



2.5.2 Slot 1



2.5.3 Slot 2



A Summary

A.1 Status

V&V Scientist	Joy Nichols
V&V Date (YYYY-MM-DD)	2012.06.06
V&V Edition	1
V&V Disposition and Status	OK
V&V Charge Time	19.1332001

A.2 Comments