

V&V Reference Report

L2 ASCDS Version : 8.4.5

Observation 1047 - L2 Version 3
Chandra X-Ray Center

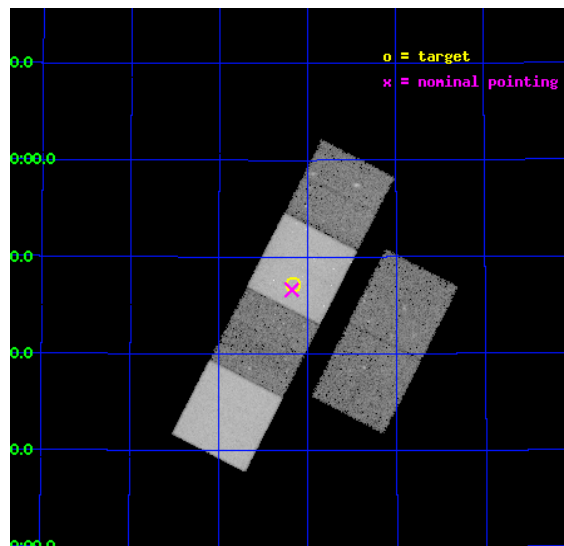
L2 Processing Date : Sep 2 2012

Contents

1	Front	2
2	OBI	3
2.1	OBI	3
2.1.1	Images	3
2.1.2	Bias	3
2.1.3	Parameters	4
2.1.4	Events	4
2.2	Compared Parameters	5
2.3	Aspect	6
2.4	Star Slots	9
2.4.1	Slot 3	9
2.4.2	Slot 4	10
2.4.3	Slot 5	11
2.4.4	Slot 6	12
2.4.5	Slot 7	13
2.5	FID Slots	14
2.5.1	Slot 0	14
2.5.2	Slot 1	15
2.5.3	Slot 2	16
A	Summary	17
A.1	Status	17
A.2	Comments	17

1 Front

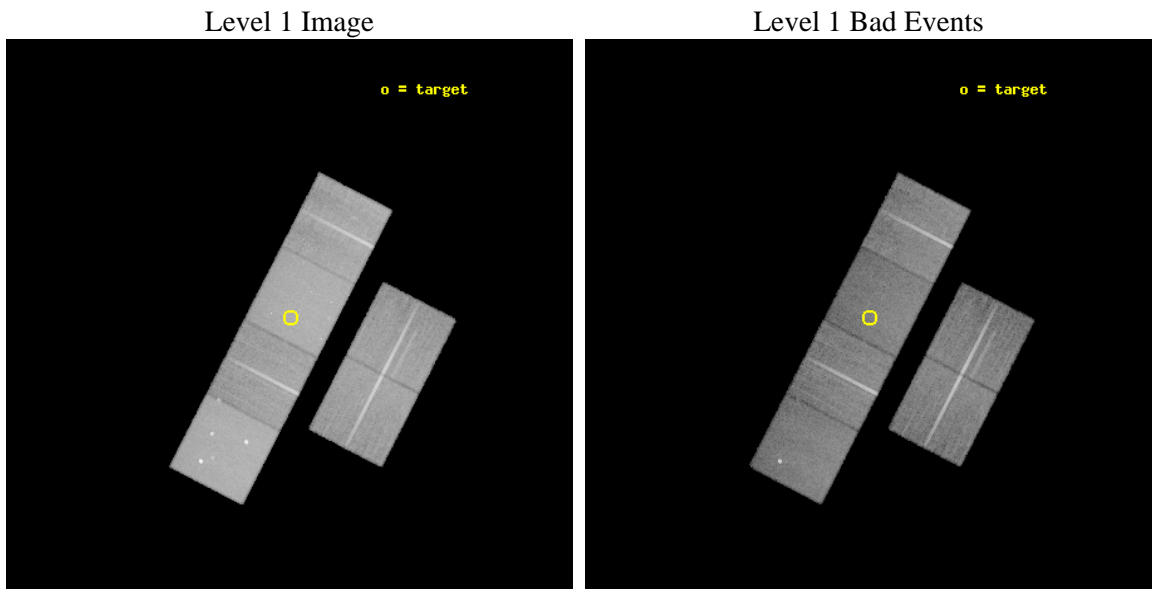
seq_num	500113	Sequence number
obs_id	1047	Observation id
title	GAMMA-RAY BURSTS: DISCOVERING THE PROGENITORS AND UNDERSTANDING THE EXPLOSION	Proposal title
observer	Prof. Shrinivas Kulkarni	Principal investigator
object	GRB 000926	Source name
dtcycle	0	
cycle	P	events from which exps? Prim/Second/Both
ra_targ	256.04	Observer's specified target RA [deg]
dec_targ	51.786444	Observer's specified target Dec [deg]
ra_nom	256.04460179162	Nominal RA [deg]
dec_nom	51.776934817745	Nominal Dec [deg]
roll_nom	297.21131379967	Nominal Roll [deg]
revision	3	Processing version of data
ontime	32648.740745127	Sum of GTIs [s]
livetime	32235.322731101	Livetime [s]
ontime2	32648.781785131	Sum of GTIs [s]
ontime3	32648.617625132	Sum of GTIs [s]
ontime5	32648.699705124	Sum of GTIs [s]
ontime6	32648.658665136	Sum of GTIs [s]
ontime7	32648.740745127	Sum of GTIs [s]
ontime8	32645.33565481	Sum of GTIs [s]
l2events	367464	Number of level 2 events



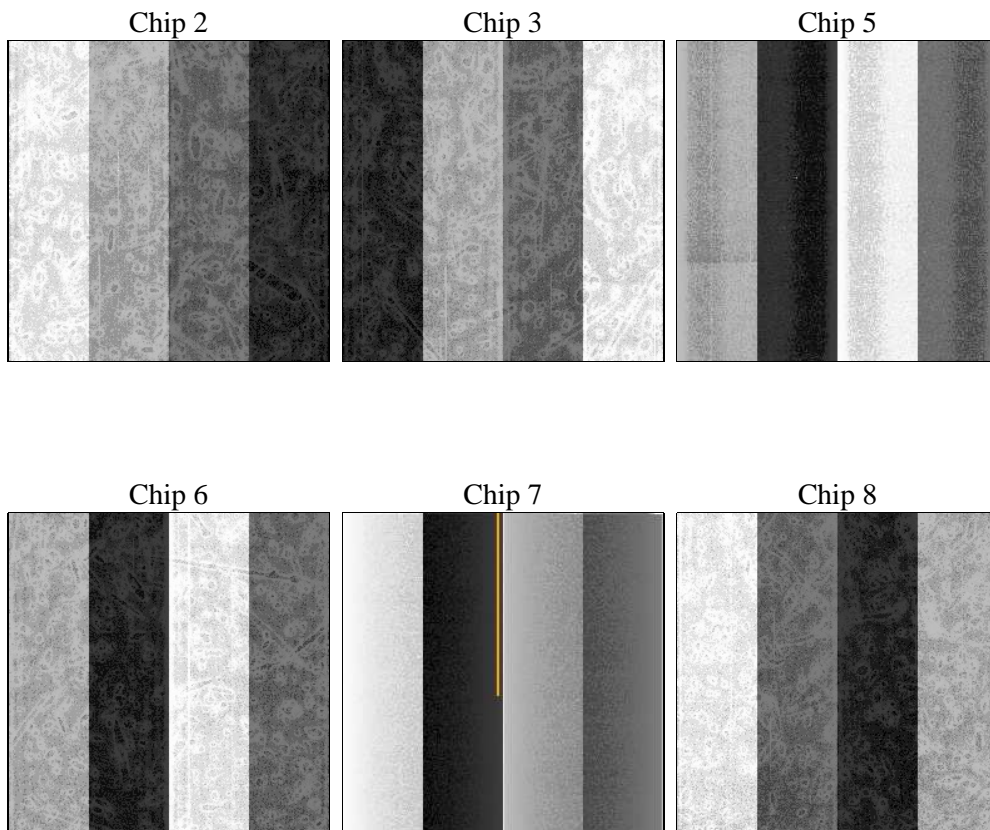
2 OBI

2.1 OBI

2.1.1 Images



2.1.2 Bias



2.1.3 Parameters

obi_num	0	Obi number	sched_exp_time	32889.030000	[s] Scheduled observation exposure time
ascdsver	8.4.5	Processing system revision	ontime	32648.740745127	Sum of GTIs [s]
caldbver	4.5.1.1	 	ontime2	32648.781785131	Sum of GTIs [s]
date	2012-09-02T09:59:05	Date and time of file creation	ontime3	32648.617625132	Sum of GTIs [s]
revision	3	Processing version of data	ontime5	32648.699705124	Sum of GTIs [s]
			ontime6	32648.658665136	Sum of GTIs [s]
			ontime7	32648.740745127	Sum of GTIs [s]
			ontime8	32645.33565481	Sum of GTIs [s]
			l1events	1432313	Number of level 1 events

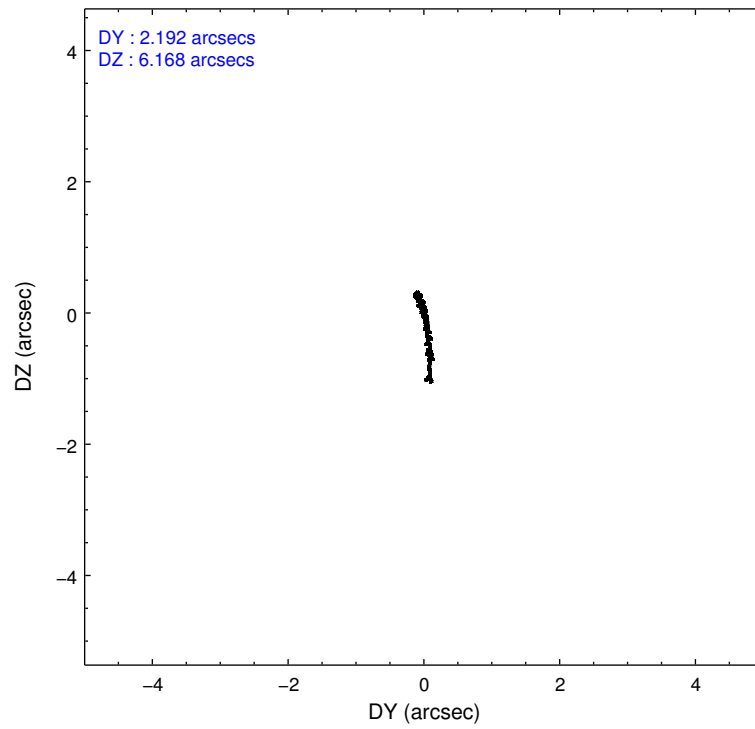
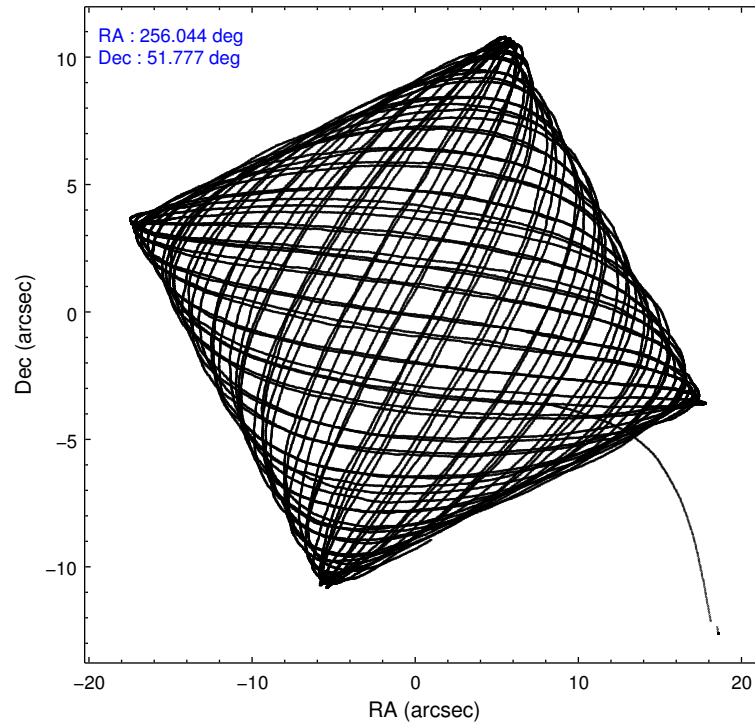
2.1.4 Events

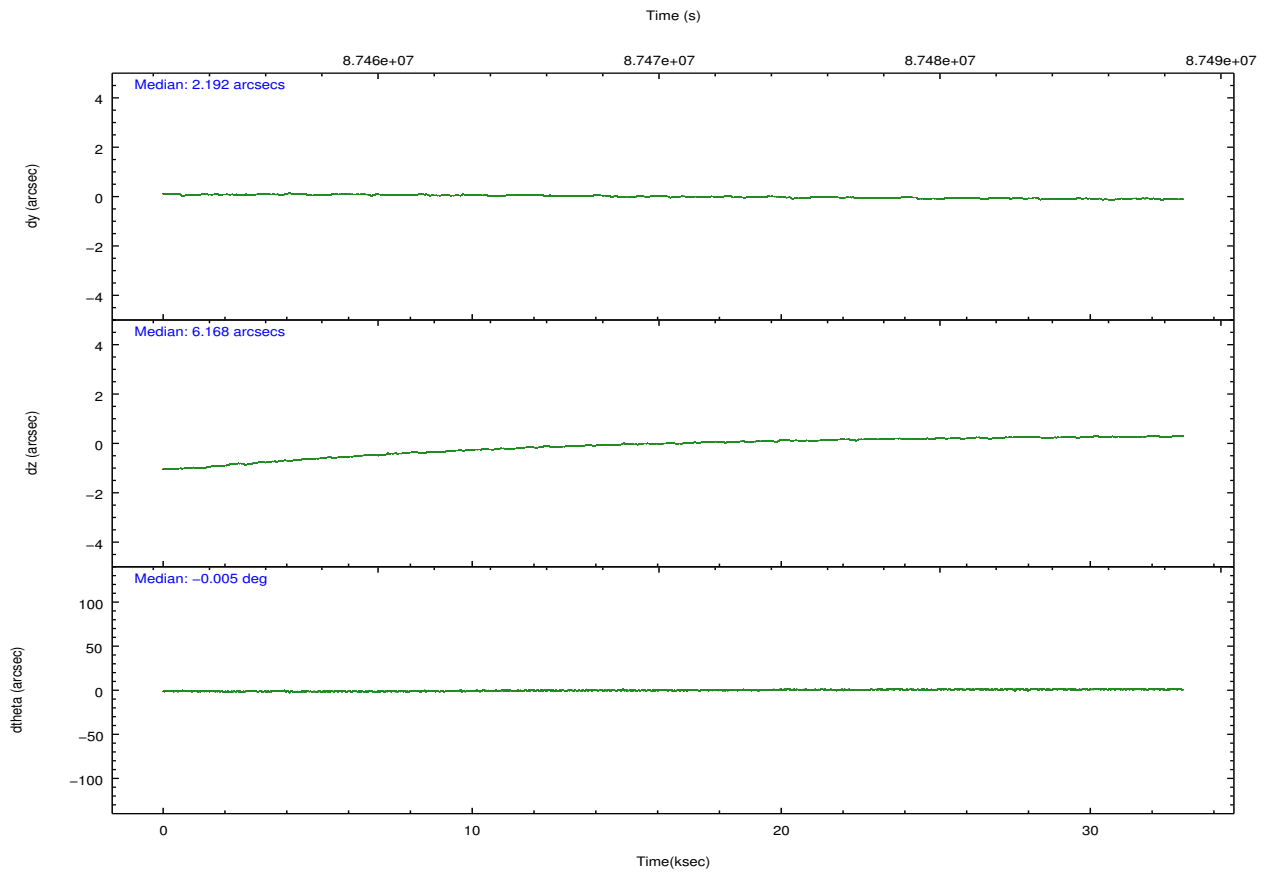
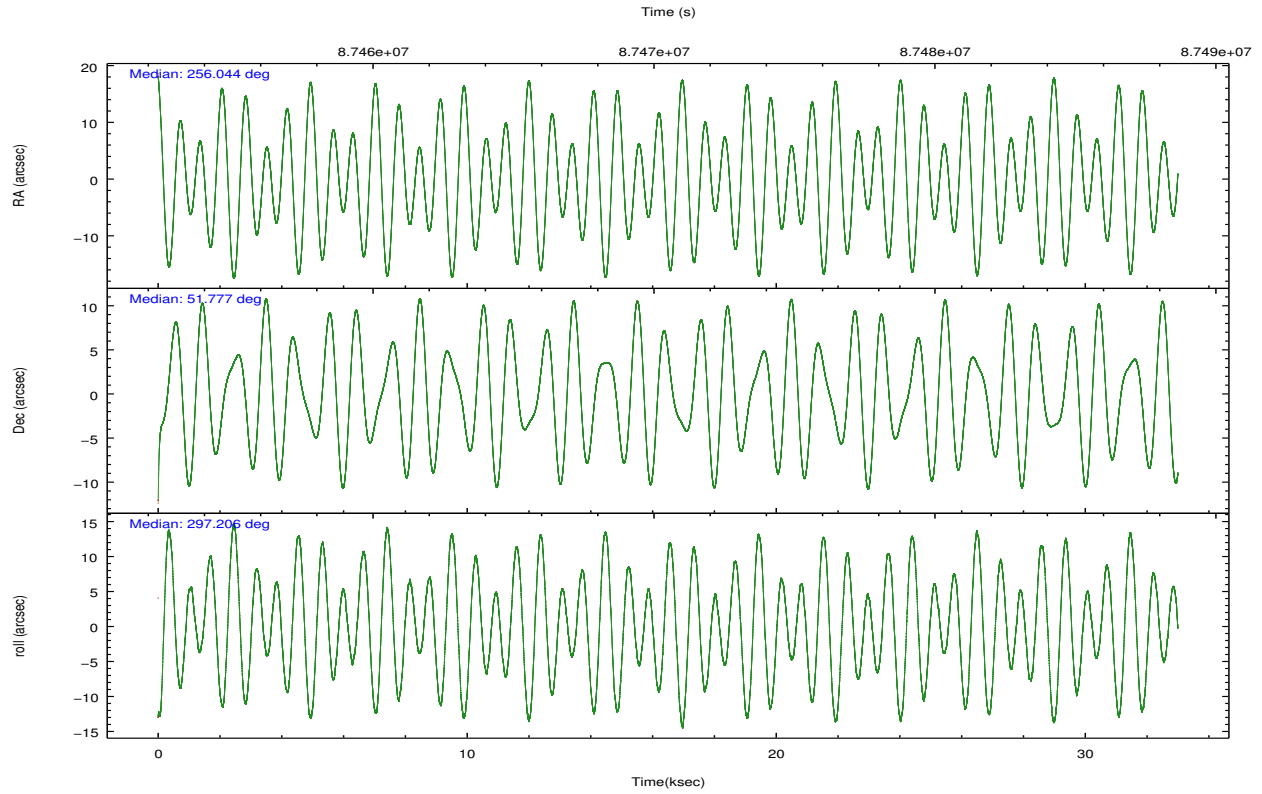
	ccd 2	ccd 3	ccd 5	ccd 6	ccd 7	ccd 8		ccd 2	ccd 3	ccd 5	ccd 6	ccd 7	ccd 8
level 1 events	199996	186034	314898	201301	284078	246006	grade 0 events	9272	9290	27001	9369	17674	15328
rejected events	178109	165114	150085	179052	142248	198380		4%	4%	8%	4%	6%	6%
rejected %	89%	88%	47%	88%	50%	80%	grade 1 events	80	90	344	96	245	141
								0%	0%	0%	0%	0%	0%
							grade 2 events	4618	3876	47110	4325	28309	10325
								2%	2%	14%	2%	9%	4%
							grade 3 events	2084	2049	8229	2209	12898	4992
								1%	1%	2%	1%	4%	2%
							grade 4 events	2079	2058	7871	2177	12831	4625
								1%	1%	2%	1%	4%	1%
							grade 5 events	6606	7252	21817	8001	23721	10187
								3%	3%	6%	3%	8%	4%
							grade 6 events	3836	3650	74628	4174	70133	12358
								1%	1%	23%	2%	24%	5%
							grade 7 events	171421	157769	127898	170950	118267	188050
								85%	84%	40%	84%	41%	76%

2.2 Compared Parameters

Parameter	Planned	Actual	Parameter	Planned	Actual
Instrument	ACIS	ACIS	Obspar format version number	7	7
Detector	ACIS-235678	ACIS-235678	Obspar file type	PREDICTED	ACTUAL
Grating	NONE	NONE	Obspar update status	NONE	UPDATED
Data mode	FAINT	FAINT	Number of optional ACIS chips dropped	0	0
Observation mode	POINTING	POINTING	On-chip summing requested	N	N
[deg] Pointing RA	256.007279	256.0446017916199	Subarray requested	NONE	NONE
[deg] Pointing Dec	51.791594	51.77693481774457	Alternating exposures requested	N	N
[deg] Pointing Roll	297.084015	297.2113137996652	[s] Primary exposure time	0.000000	3.2
[mm] SIM focus pos	-0.684267	-0.6828225247311905			
[mm] SIM defocus	0	0.001444936568705701			
[mm] SIM translation stage pos	-190.132523	-190.1425803651734			
[mm] SIM translation stage offset	0	0.01005778216563158			
[s] Observation start time (MET)	87454108.184000	87452025.150739			
Observation start date	2000-10-09T04:47:24	2000-10-09T04:13:45			
[s] Observation end time (MET)	87486997.184000	87487311.80207101			
Observation end date	2000-10-09T13:55:33	2000-10-09T14:01:51			
Read mode	TIMED	TIMED			

2.3 Aspect



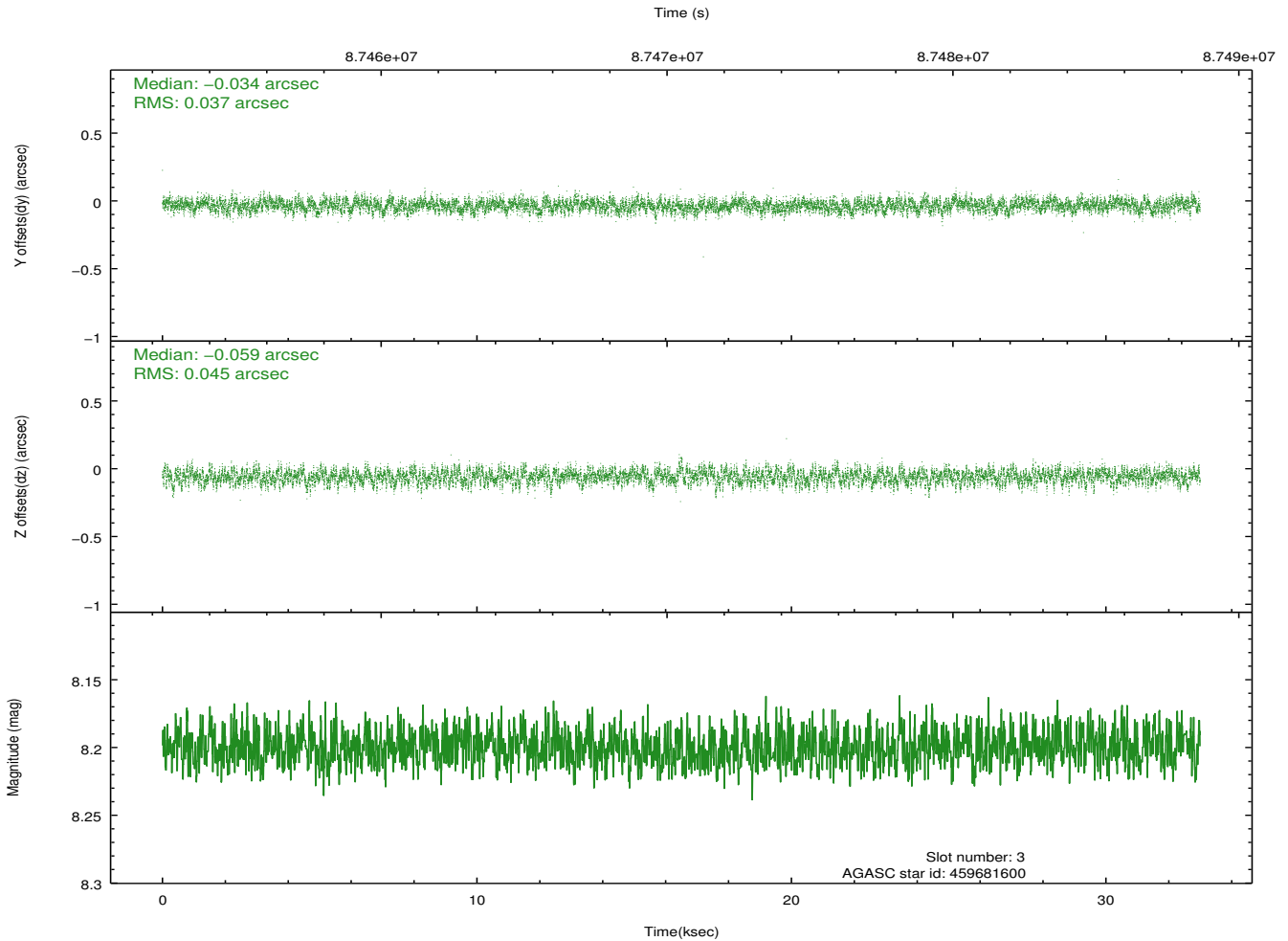
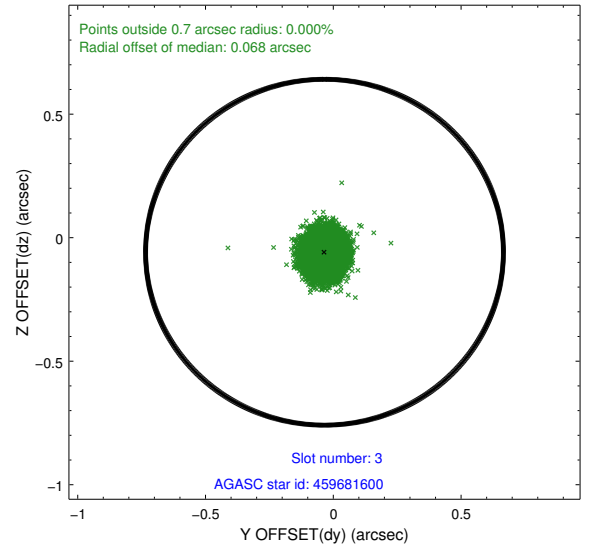
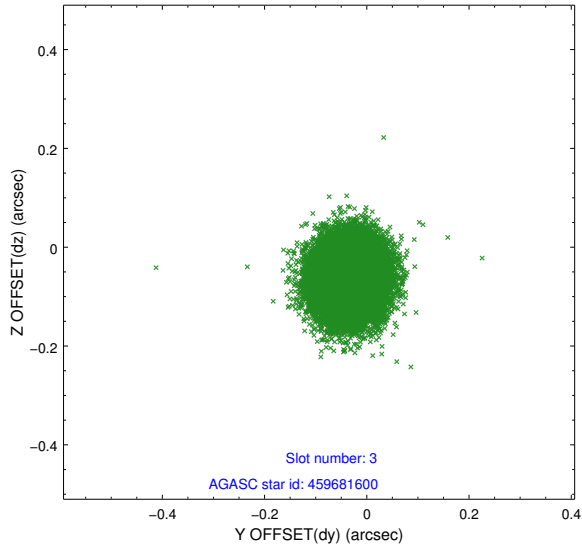


Slot Statistics

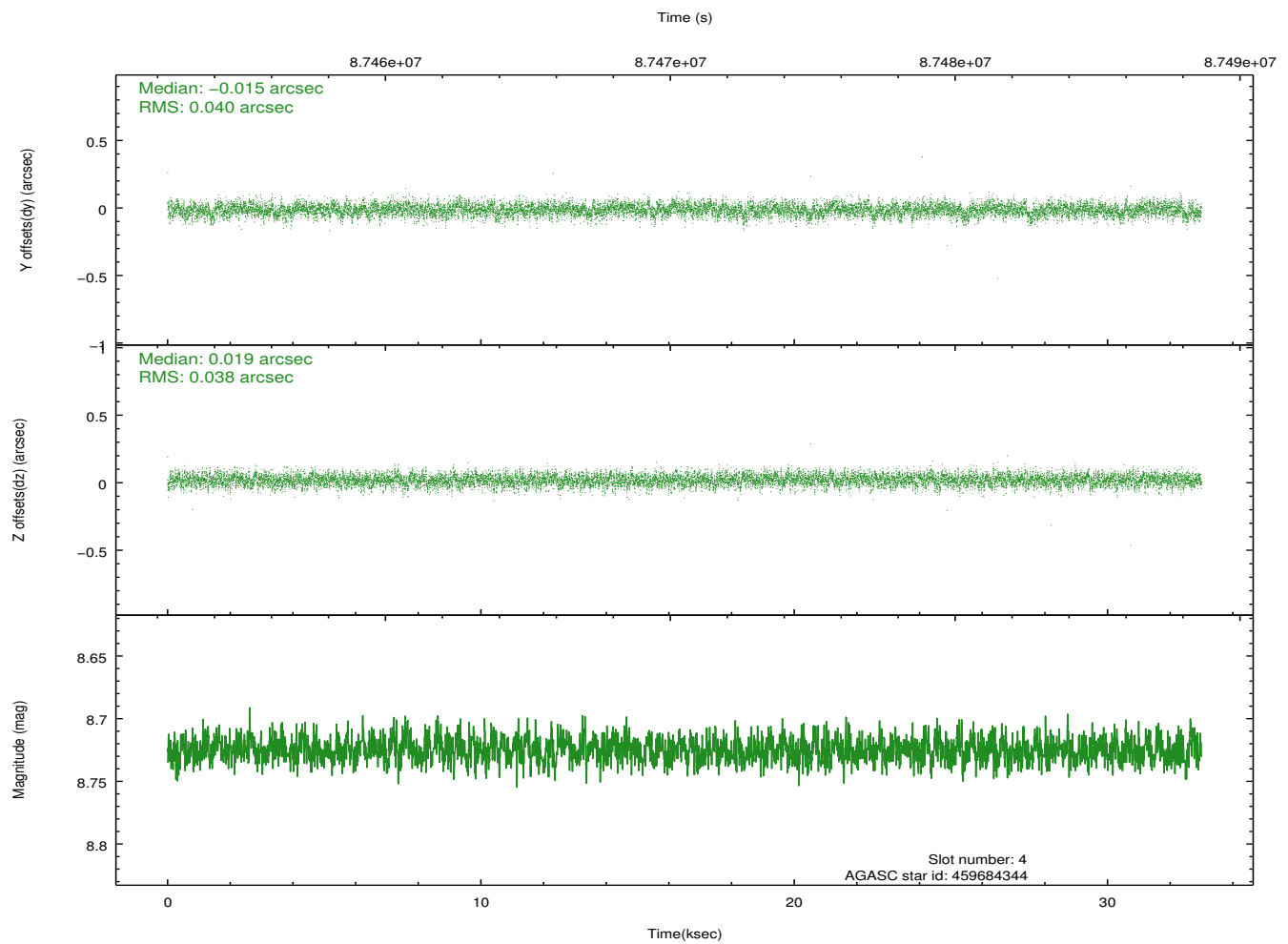
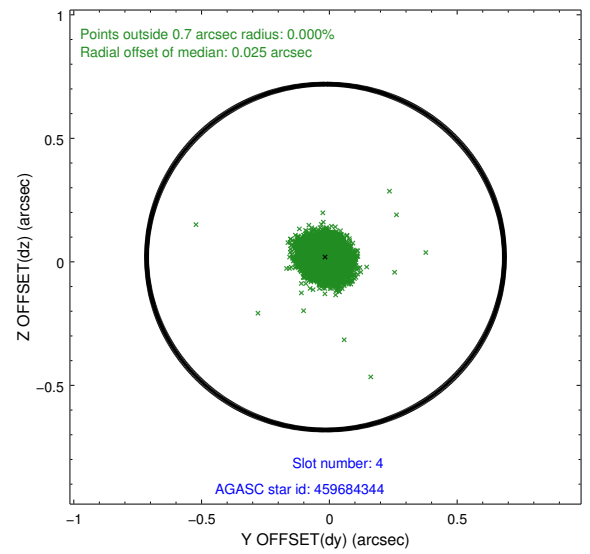
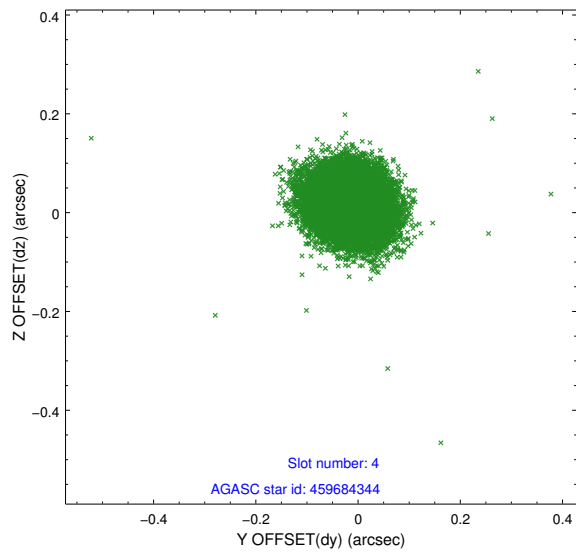
slot	status	id	mag	n_pts	med_dy	med_dz	dr1	dr2	ra	dec	mean_y	mean_z
0	FID	ACIS-S-2	7.11	8047	-0.043	-0.005	0.007	0.012	0.000000	0.000000	-754.83	-1727.14
1	FID	ACIS-S-4	7.20	8048	-0.008	0.022	0.009	0.018	0.000000	0.000000	2158.43	181.35
2	FID	ACIS-S-5	7.23	8048	0.019	-0.008	0.008	0.015	0.000000	0.000000	-1807.57	175.00
3	GUIDE	459681600	8.20	16094	-0.034	-0.059	0.062	0.097	255.534425	51.942325	-963.82	-685.55
4	GUIDE	459684344	8.73	16093	-0.015	0.019	0.058	0.094	255.938505	51.246844	1675.49	-1030.42
5	GUIDE	459670288	8.66	16094	-0.019	-0.015	0.065	0.105	256.126653	52.161685	-1066.37	841.56
6	GUIDE	459669760	8.72	16093	-0.020	0.046	0.064	0.104	256.337901	52.193890	-958.89	1310.08
7	GUIDE	459672016	9.39	16086	0.089	0.011	0.083	0.135	256.647891	51.557718	1396.84	896.64

2.4 Star Slots

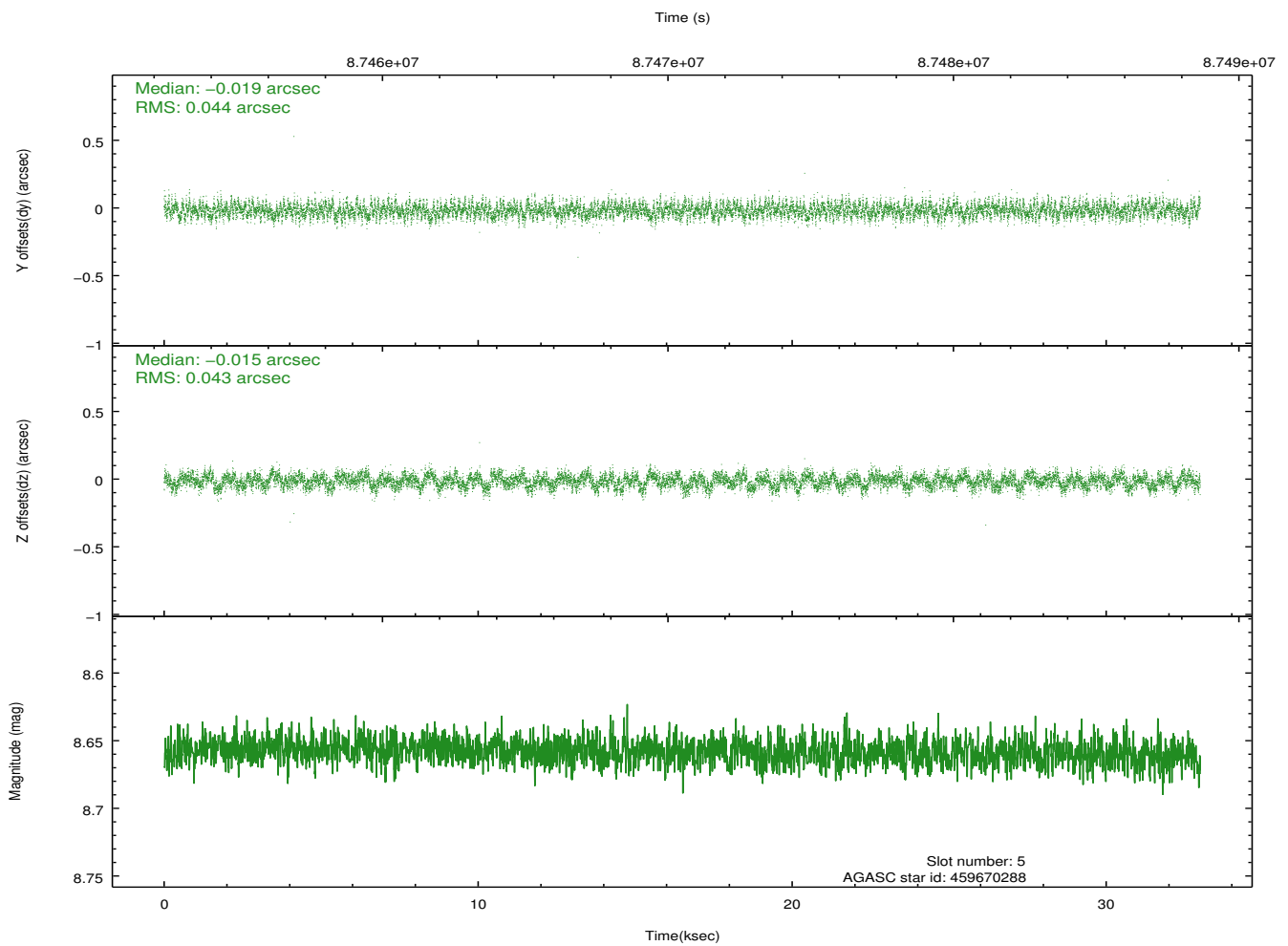
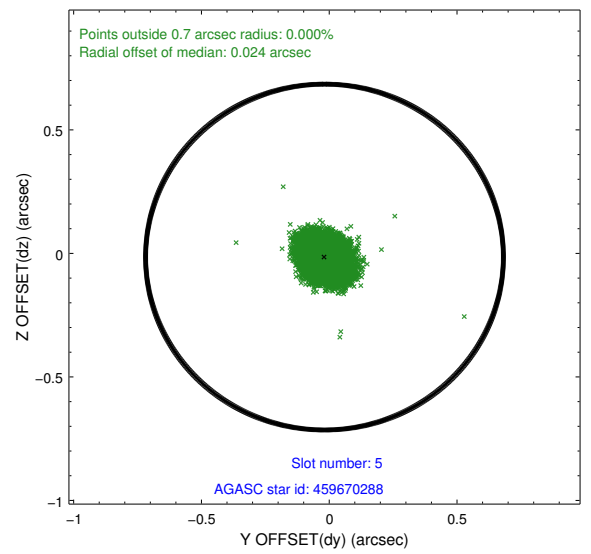
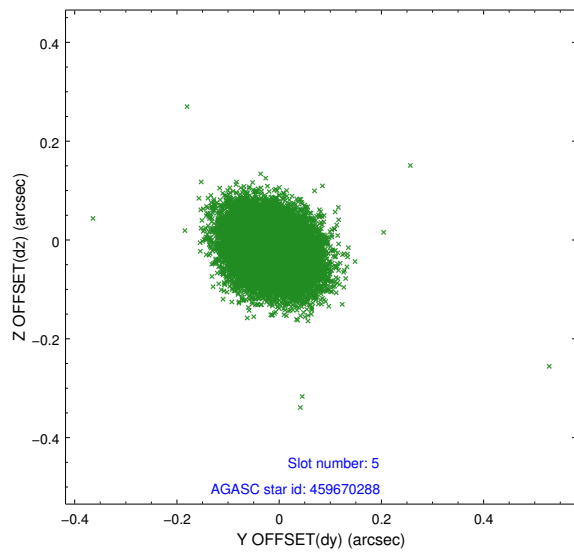
2.4.1 Slot 3



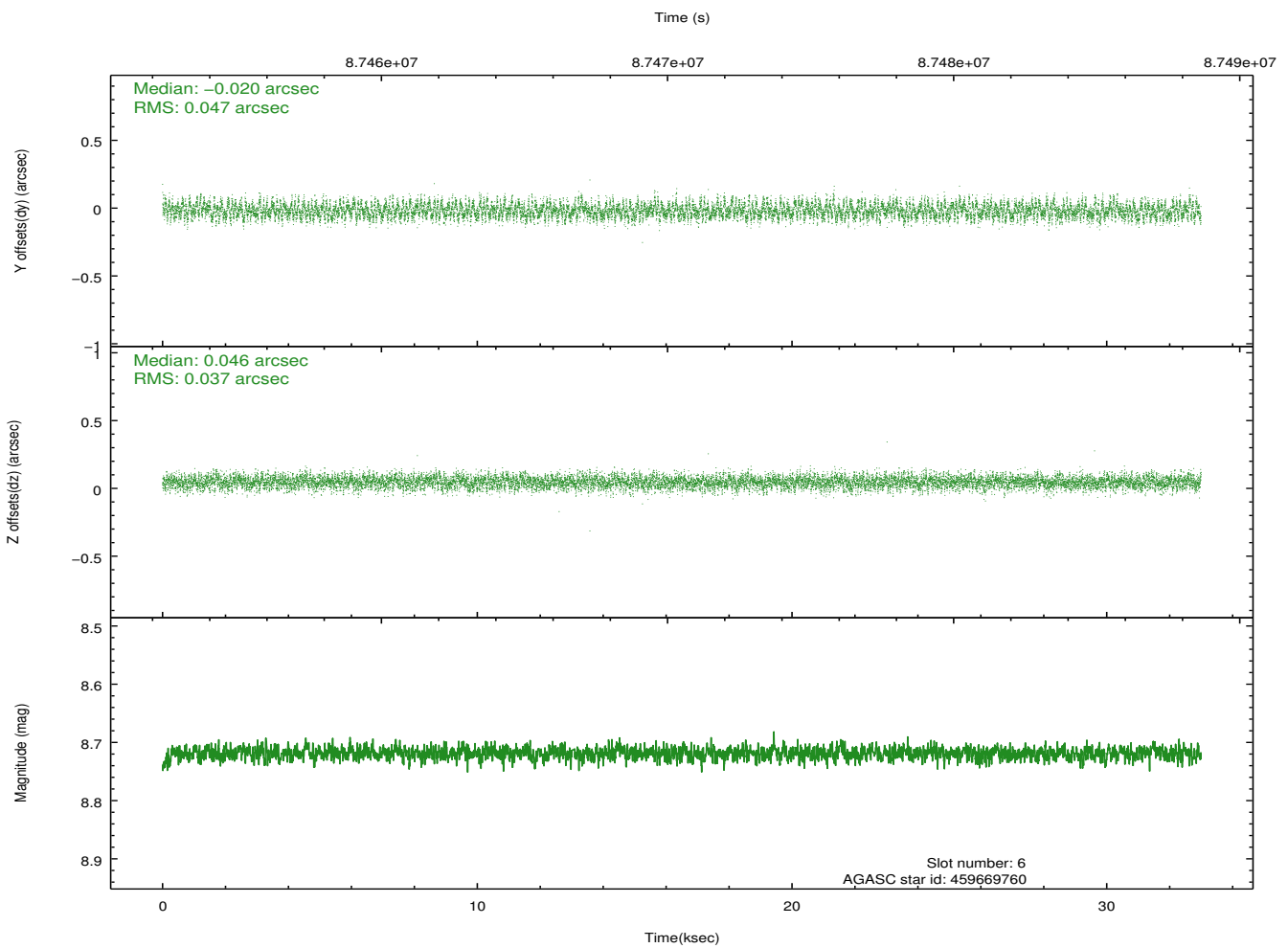
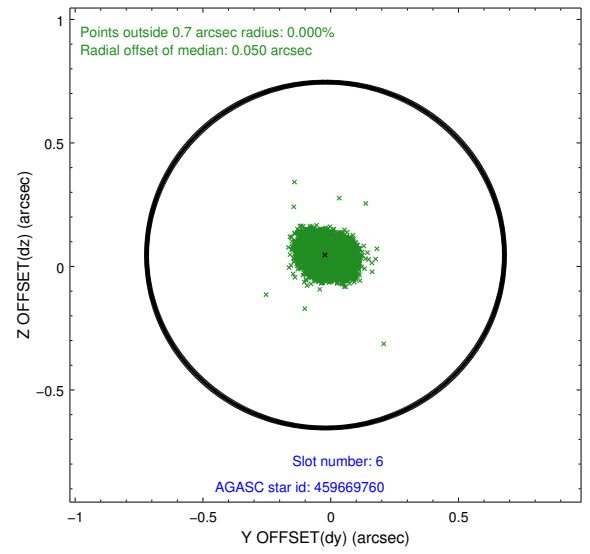
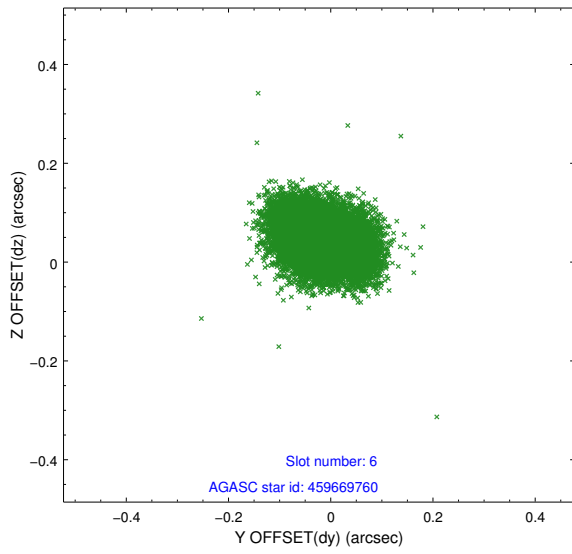
2.4.2 Slot 4



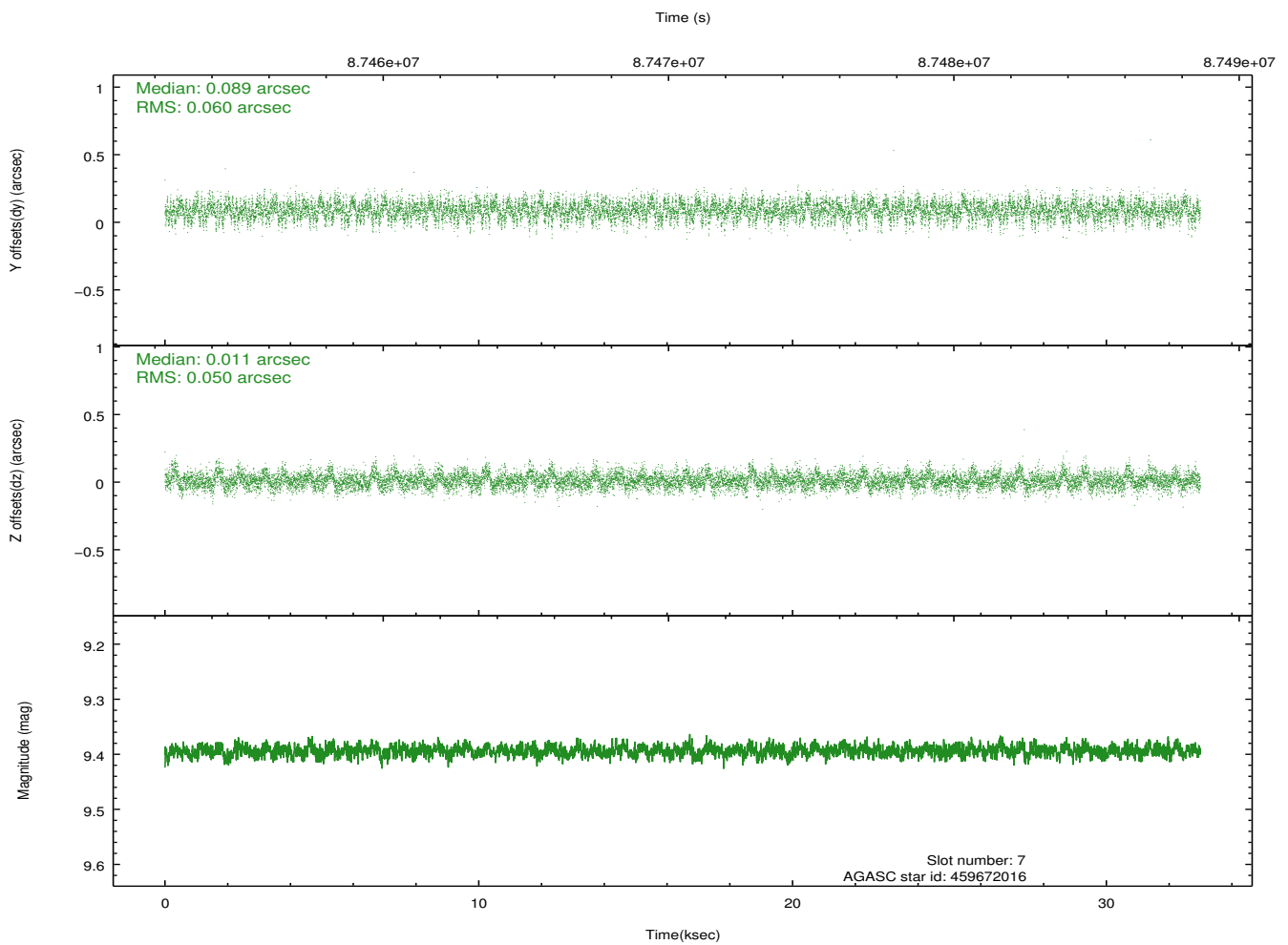
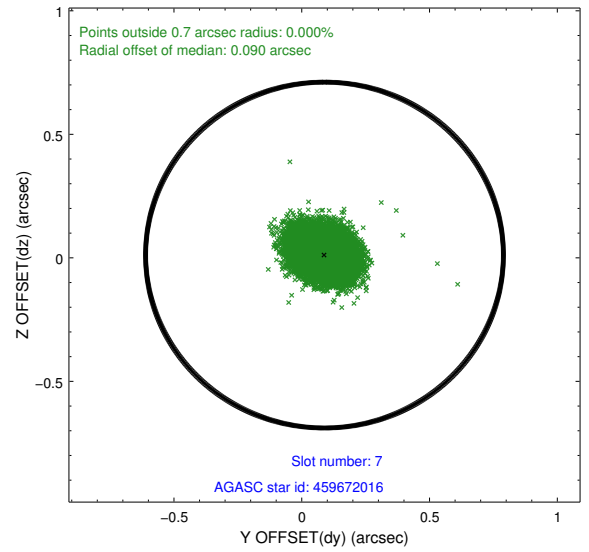
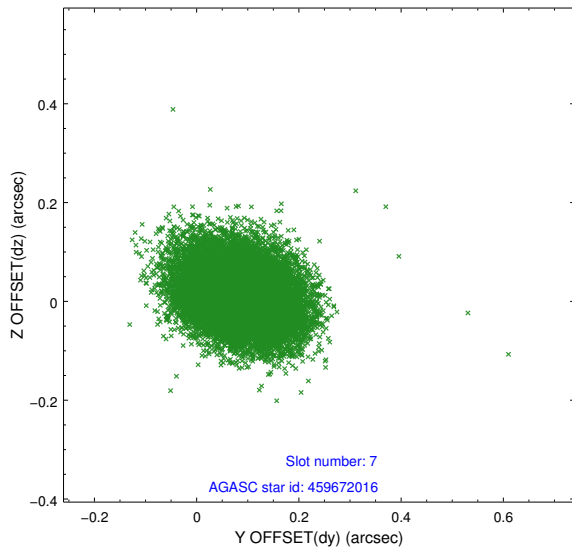
2.4.3 Slot 5



2.4.4 Slot 6

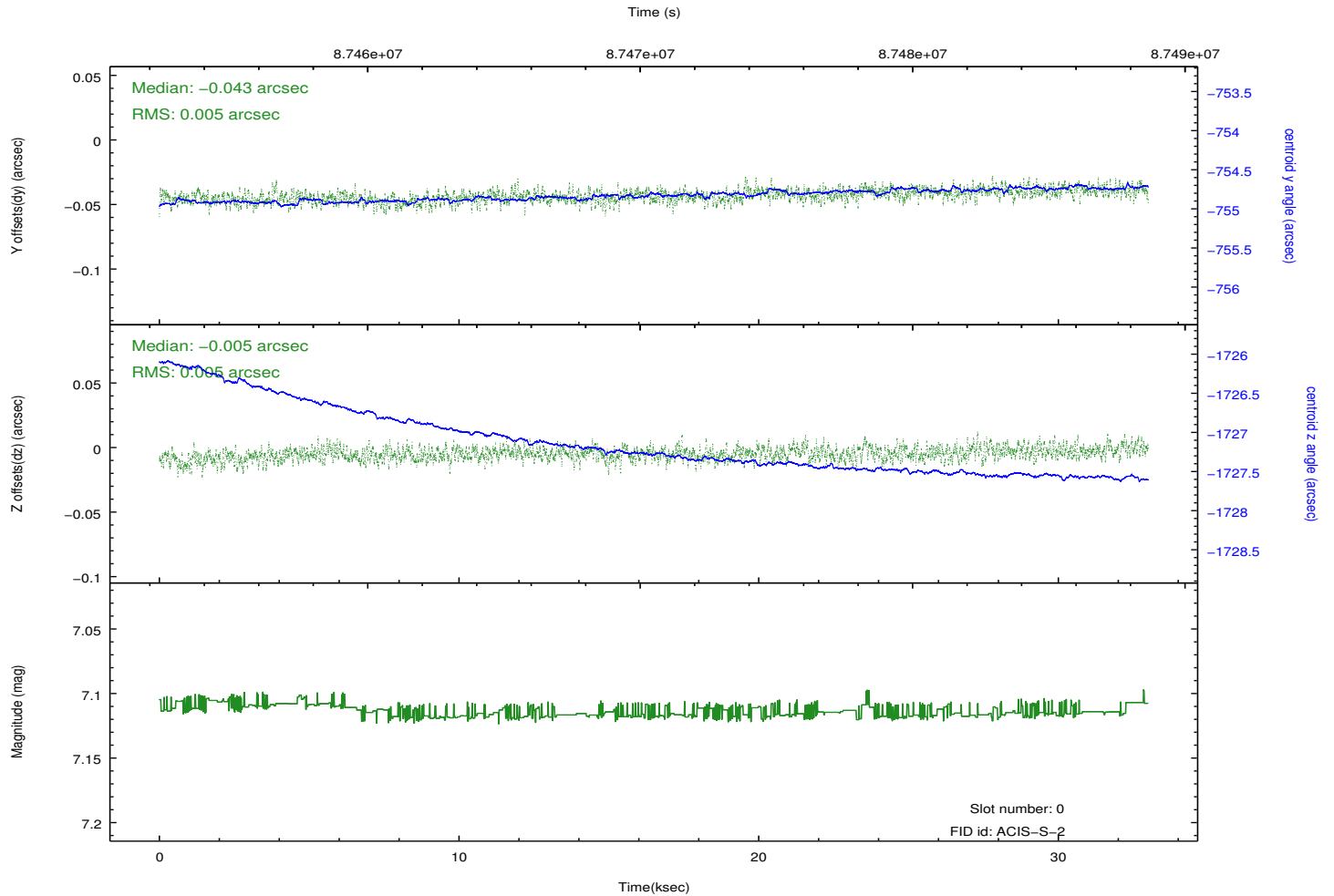
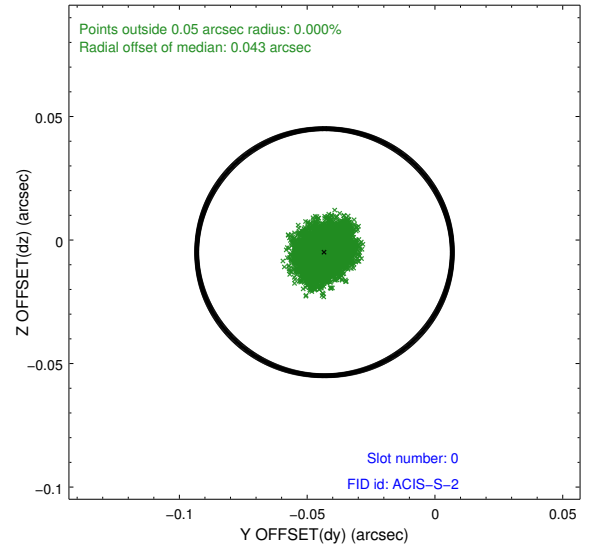
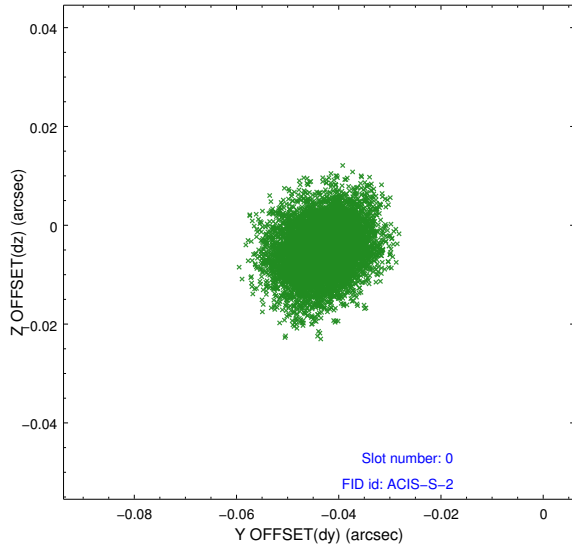


2.4.5 Slot 7

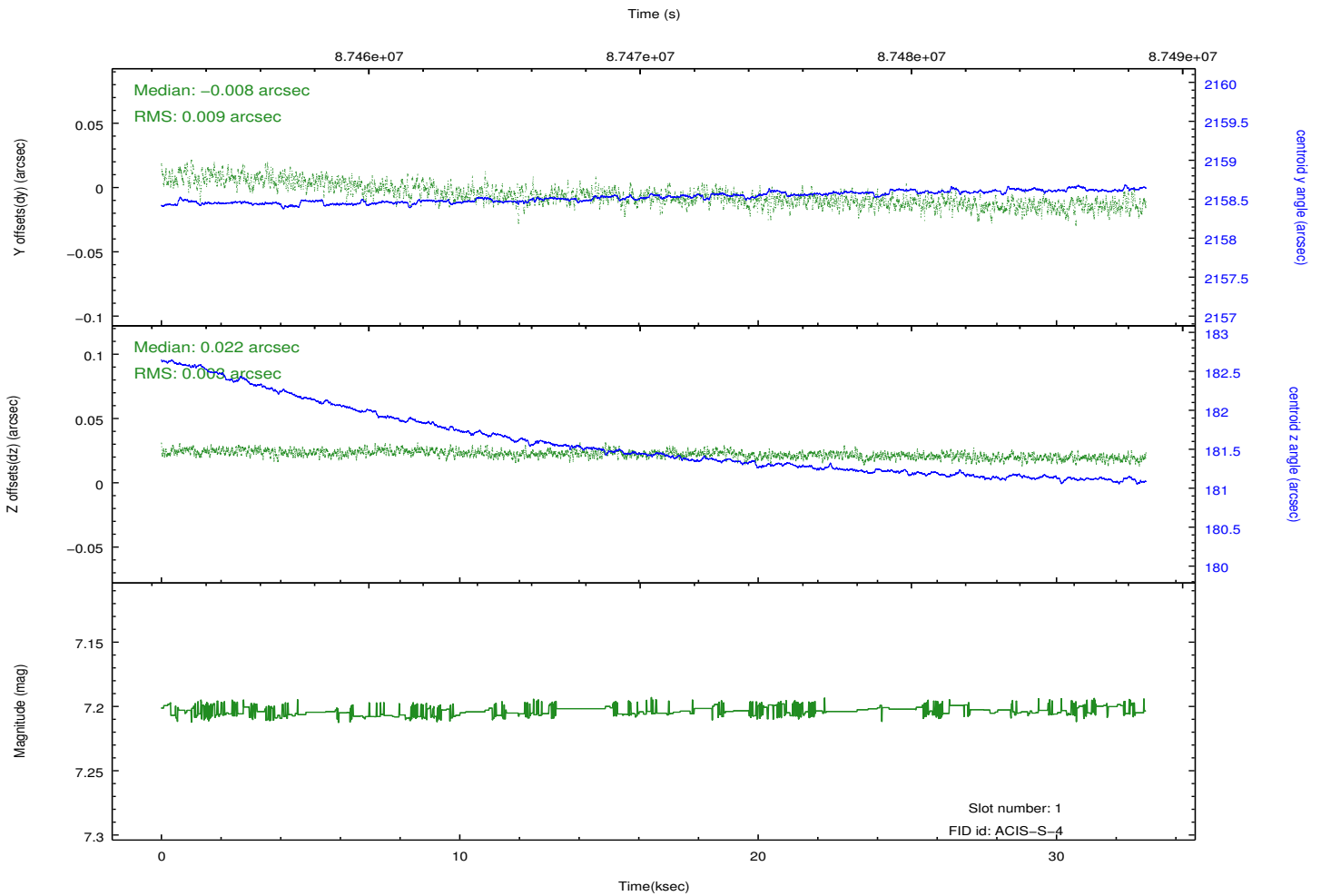
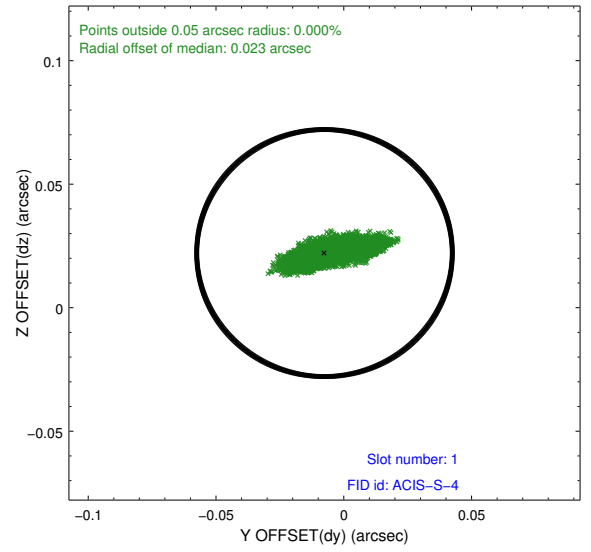
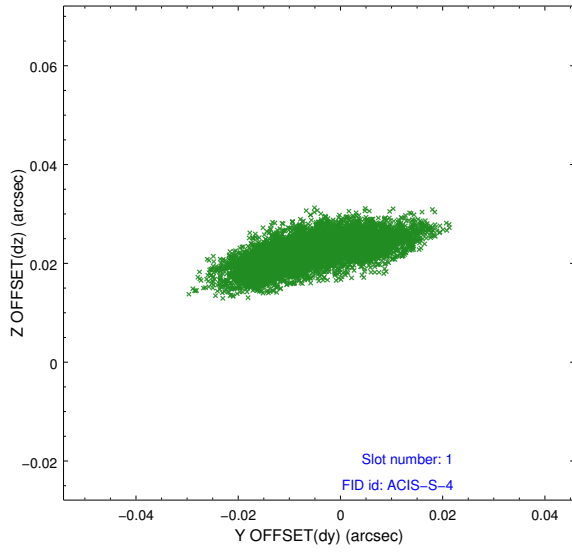


2.5 FID Slots

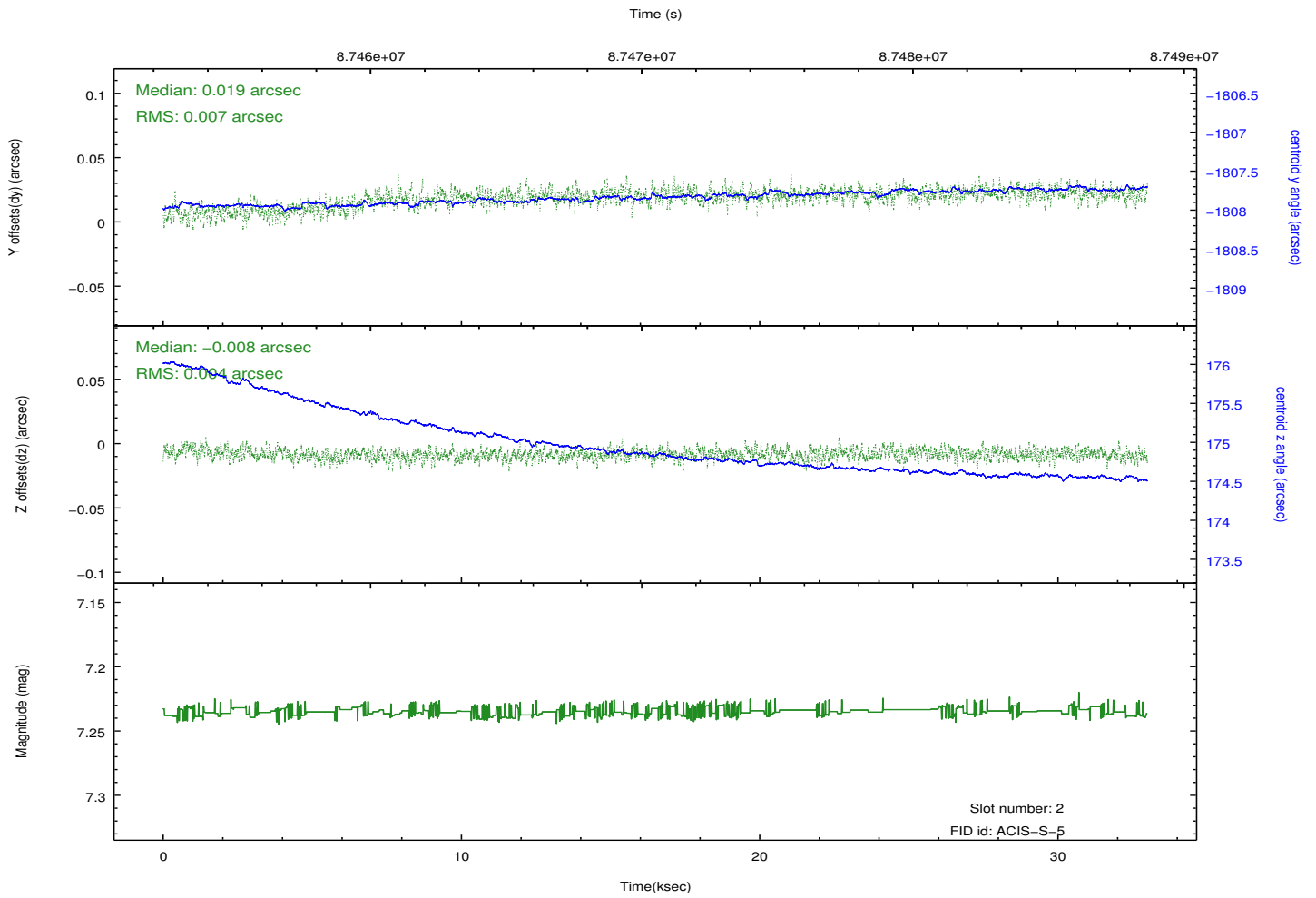
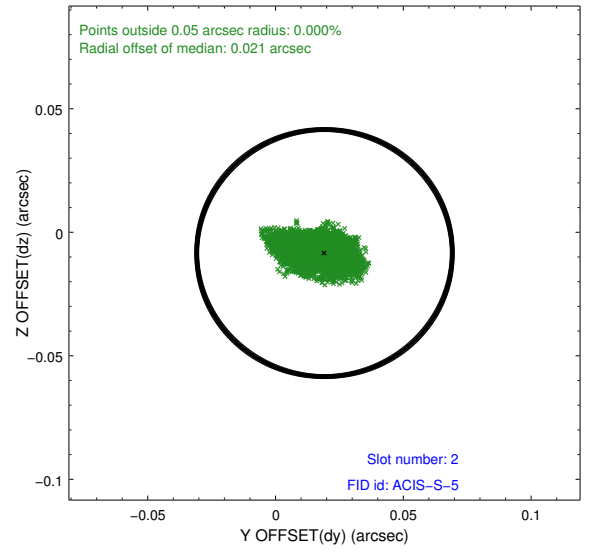
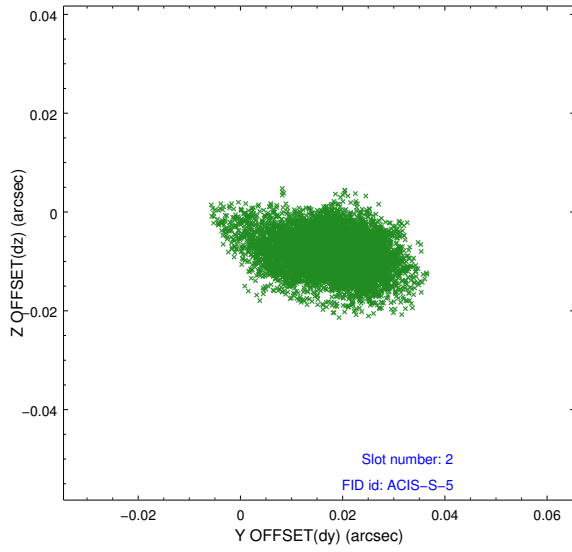
2.5.1 Slot 0



2.5.2 Slot 1



2.5.3 Slot 2



A Summary

A.1 Status

V&V Scientist	Jen Lauer
V&V Date (YYYY-MM-DD)	2012.09.10
V&V Edition	1
V&V Disposition and Status	OK
V&V Charge Time	32.649

A.2 Comments

Joint proposal with HST.