

V&V Reference Report

L2 ASCDS Version : 8.4.4

Observation 10487 - L2 Version 2
Chandra X-Ray Center

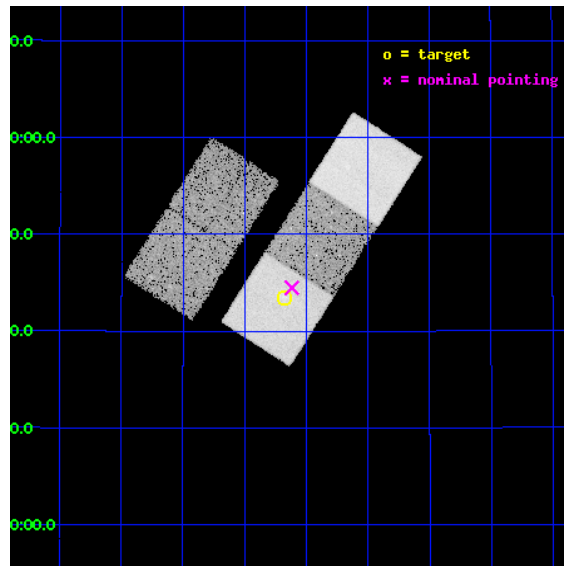
L2 Processing Date : Jun 1 2012

Contents

1	Front	2
2	OBI	3
2.1	OBI	3
2.1.1	Images	3
2.1.2	Bias	3
2.1.3	Parameters	4
2.1.4	Events	4
2.2	Compared Parameters	5
2.3	Aspect	6
2.4	Star Slots	9
2.4.1	Slot 3	9
2.4.2	Slot 4	10
2.4.3	Slot 5	11
2.4.4	Slot 6	12
2.4.5	Slot 7	13
2.5	FID Slots	14
2.5.1	Slot 0	14
2.5.2	Slot 1	15
2.5.3	Slot 2	16
A	Summary	17
A.1	Status	17
A.2	Comments	17

1 Front

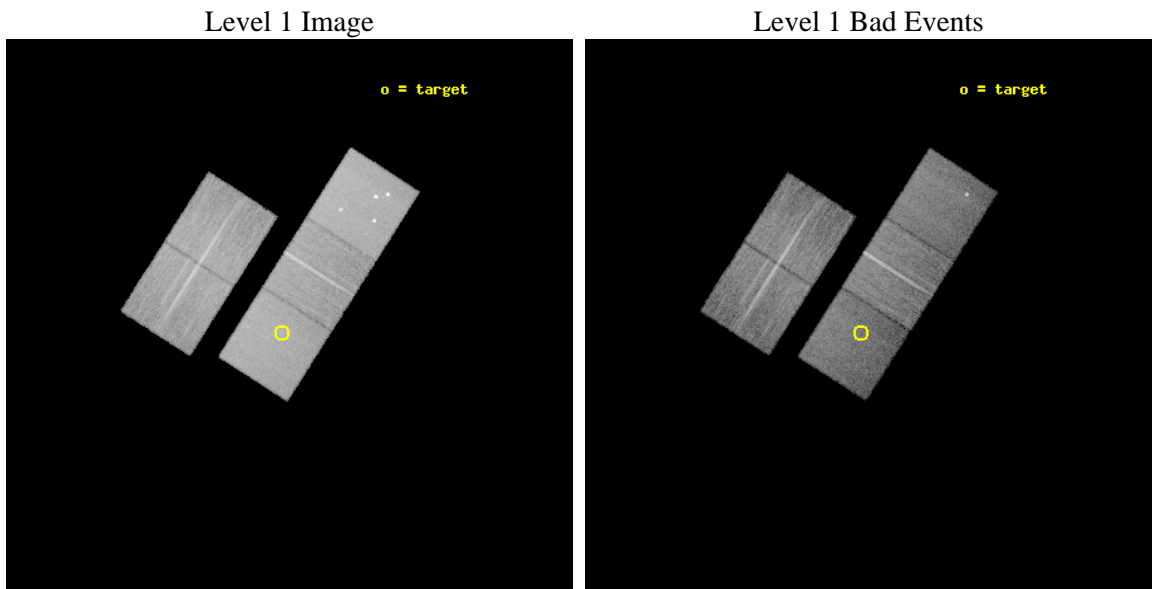
seq_num	800842	Sequence number
obs_id	10487	Observation id
title	Deciphering Cluster Observables: Tracing the Baryons in Clusters of Galaxies	Proposal title
observer	Dr. Amalia Hicks	Principal investigator
object	RCS1330+3043	Source name
dtcycle	0	
cycle	P	events from which exps? Prim/Second/Both
ra_targ	202.544583	Observer's specified target RA [deg]
dec_targ	30.725167	Observer's specified target Dec [deg]
ra_nom	202.52910853395	Nominal RA [deg]
dec_nom	30.741386209721	Nominal Dec [deg]
roll_nom	122.51948689843	Nominal Roll [deg]
revision	2	Processing version of data
ontime	16032.548877895	Sum of GTIs [s]
livetime	15823.071823814	Livetime [s]
ontime2	16029.243717611	Sum of GTIs [s]
ontime3	16032.425757885	Sum of GTIs [s]
ontime5	16032.507837892	Sum of GTIs [s]
ontime6	16029.325807512	Sum of GTIs [s]
ontime7	16032.548877895	Sum of GTIs [s]
l2events	195572	Number of level 2 events



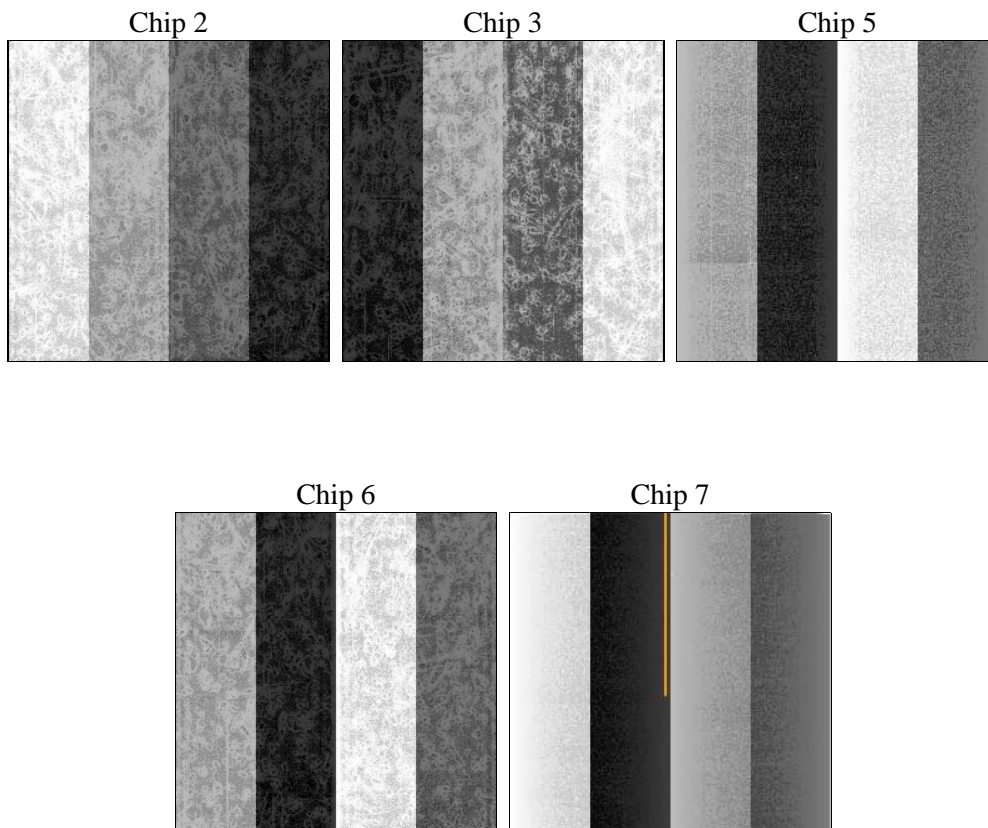
2 OBI

2.1 OBI

2.1.1 Images



2.1.2 Bias



2.1.3 Parameters

obi_num	0	Obi number	sched_exp_time	16000.000000	[s] Scheduled observation exposure time
ascdsver	8.4.4	Processing system revision	ontime	16032.548877895	Sum of GTIs [s]
caldbver	4.4.9	 	ontime2	16029.243717611	Sum of GTIs [s]
date	2012-06-02T00:51:05	Date and time of file creation	ontime3	16032.425757885	Sum of GTIs [s]
revision	2	Processing version of data	ontime5	16032.507837892	Sum of GTIs [s]
			ontime6	16029.325807512	Sum of GTIs [s]
			ontime7	16032.548877895	Sum of GTIs [s]
			l1events	775982	Number of level 1 events

2.1.4 Events

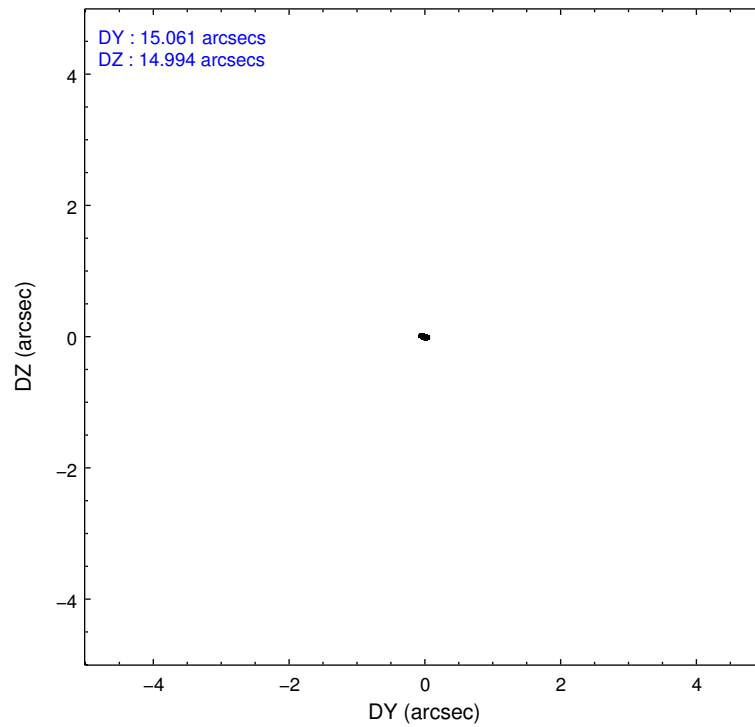
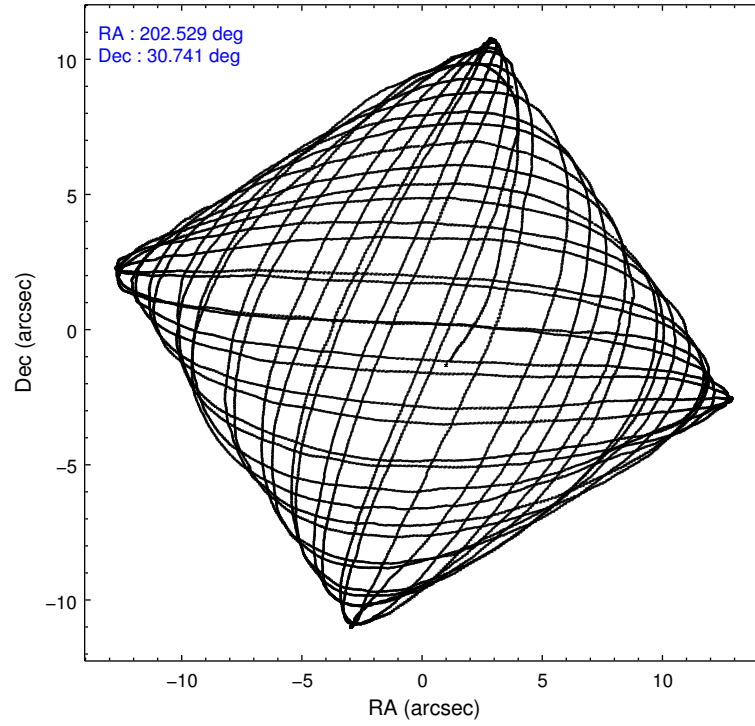
	ccd 2	ccd 3	ccd 5	ccd 6	ccd 7
level 1 events	141696	135119	201858	139077	158232
rejected events	128310	122304	99414	124211	85857
rejected %	90%	90%	49%	89%	54%

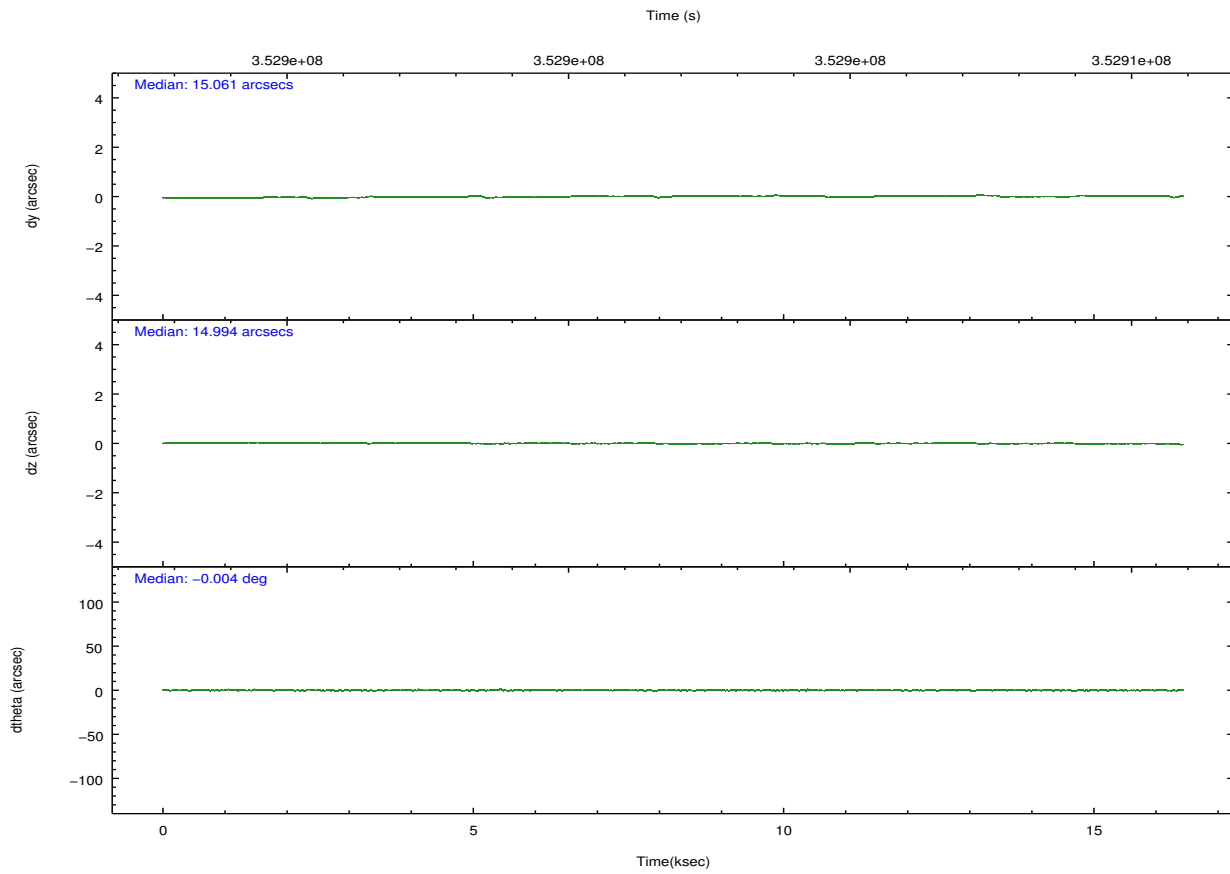
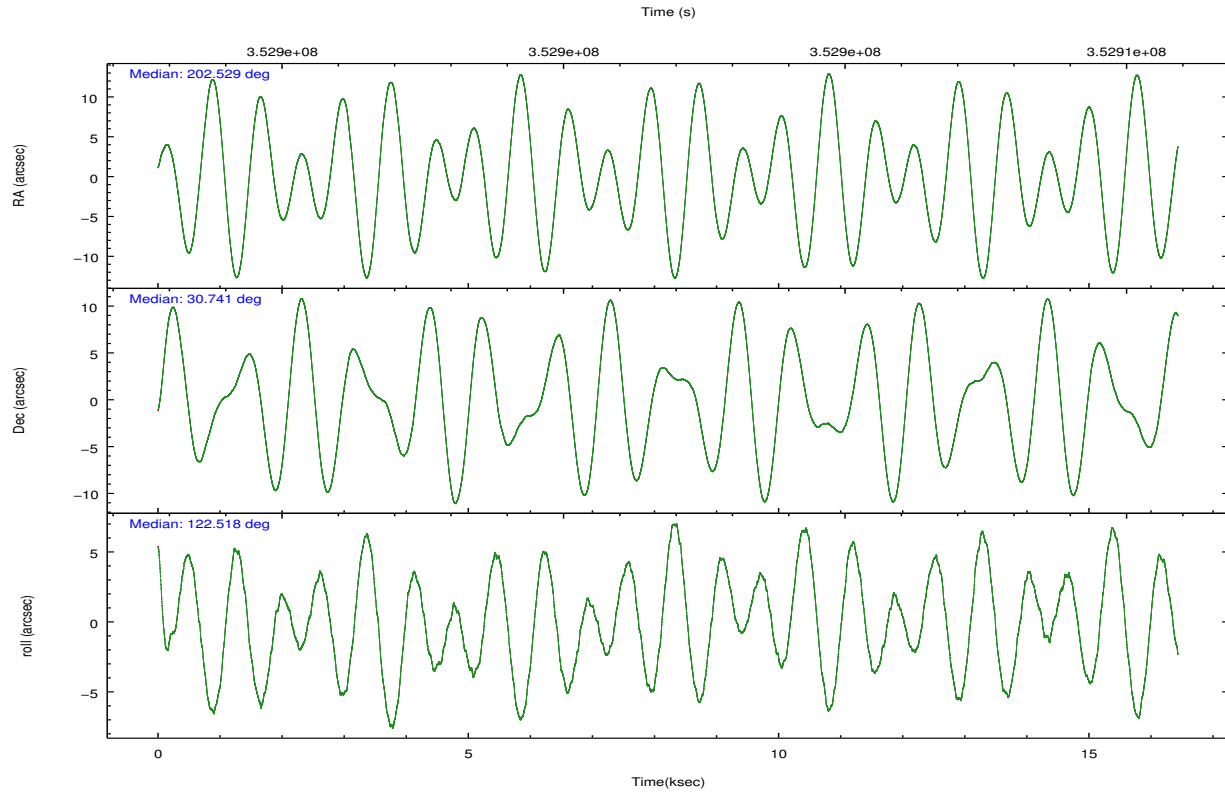
	ccd 2	ccd 3	ccd 5	ccd 6	ccd 7
grade 0 events	4692	4604	14159	5262	7060
	3%	3%	7%	3%	4%
grade 1 events	88	61	366	72	208
	0%	0%	0%	0%	0%
grade 2 events	3209	2761	30602	3379	14899
	2%	2%	15%	2%	9%
grade 3 events	1422	1447	3775	1551	6600
	1%	1%	1%	1%	4%
grade 4 events	1442	1427	3648	1522	6546
	1%	1%	1%	1%	4%
grade 5 events	4659	5479	15350	5729	16327
	3%	4%	7%	4%	10%
grade 6 events	2631	2578	50306	3154	37297
	1%	1%	24%	2%	23%
grade 7 events	123553	116762	83652	118408	69295
	87%	86%	41%	85%	43%

2.2 Compared Parameters

Parameter	Planned	Actual	Parameter	Planned	Actual
Instrument	ACIS	ACIS	Obspar format version number	7	7
Detector	ACIS-23567	ACIS-23567	Obspar file type	PREDICTED	ACTUAL
Grating	NONE	NONE	Obspar update status	NONE	UPDATED
Data mode	VFAINT	VFAINT	CCD I0 on	N	N
Observation mode	POINTING	POINTING	CCD I1 on	N	N
[deg] Pointing RA	202.557548	202.5291085339549	CCD I2 on	O1	Y
[deg] Pointing Dec	30.729071	30.74138620972135	CCD I3 on	O2	Y
[deg] Pointing Roll	122.348324	122.5194868984295	CCD S0 on	N	N
[mm] SIM focus pos	-0.684267	-0.6828225247311905	CCD S1 on	O4	Y
[mm] SIM defocus	0	0.001444936568705701	CCD S2 on	O3	Y
[mm] SIM translation stage pos	-190.132523	-190.1400660498719	CCD S3 on	Y	Y
[mm] SIM translation stage offset	0	0.00754346686406393	CCD S4 on	N	N
[s] Observation start time (MET)	352894067.184000	352893014.4195	CCD S5 on	N	N
Observation start date	2009-03-08T10:06:41	2009-03-08T09:50:14	Number of optional ACIS chips dropped	0	0
[s] Observation end time (MET)	352910067.184000	352910660.30788	On-chip summing requested	N	N
Observation end date	2009-03-08T14:33:21	2009-03-08T14:44:20	Subarray requested	NONE	NONE
Read mode	TIMED	TIMED	Alternating exposures requested	N	N
			[s] Primary exposure time	0.000000	3.1

2.3 Aspect



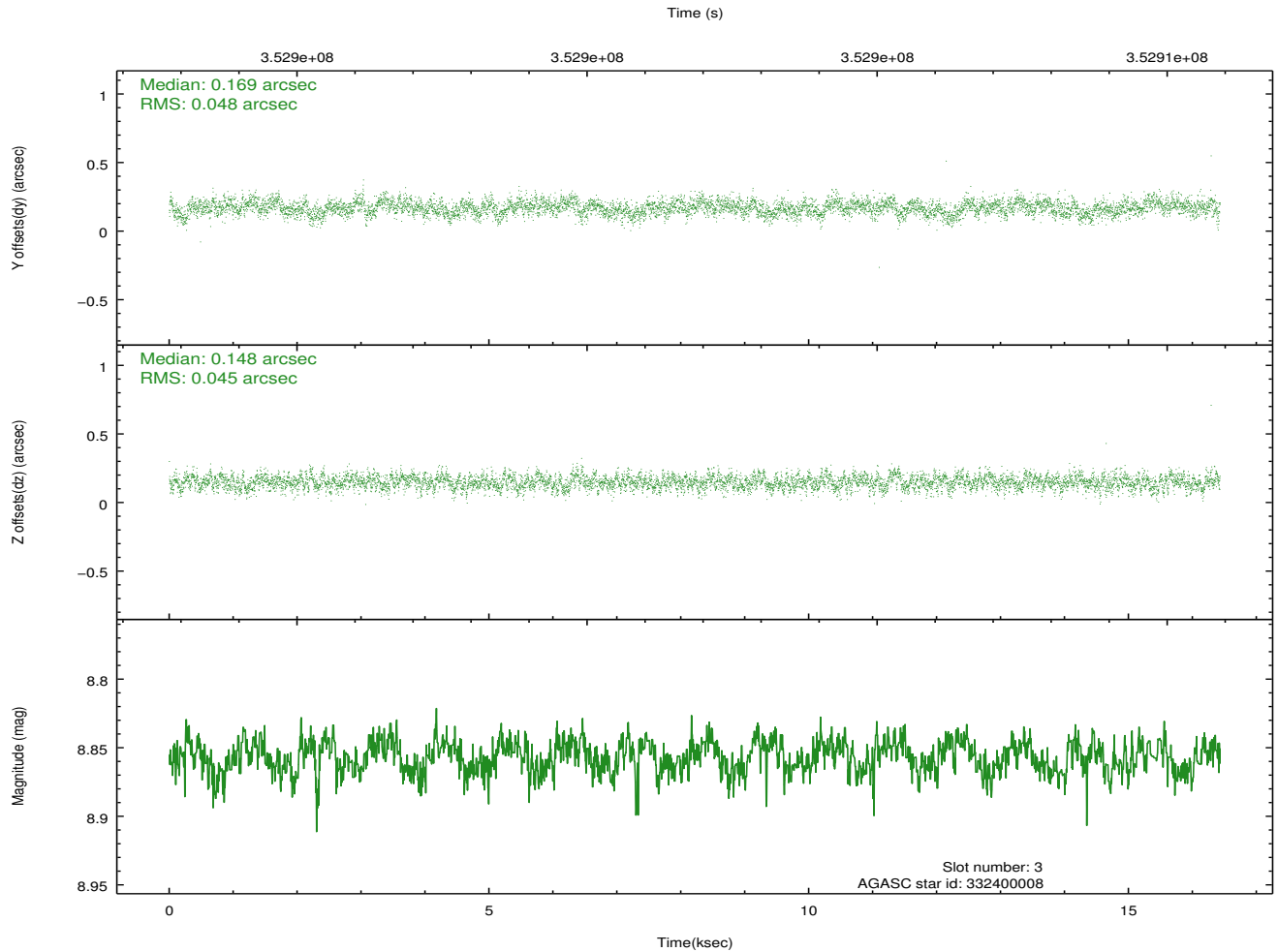
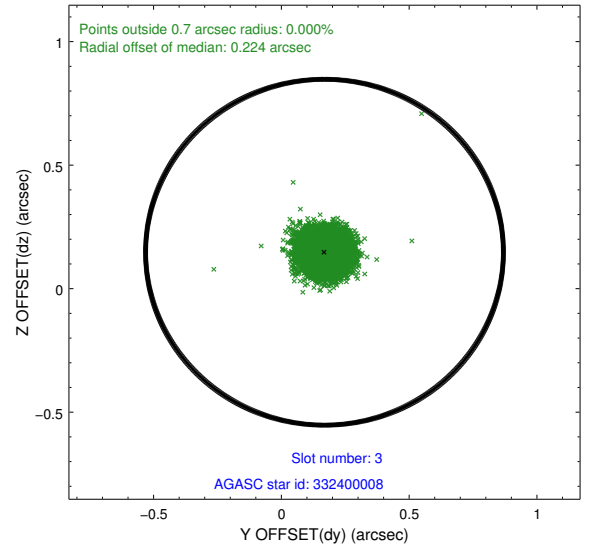
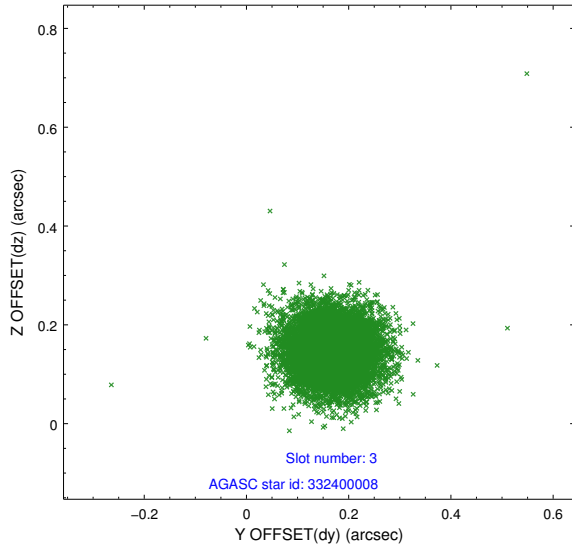


Slot Statistics

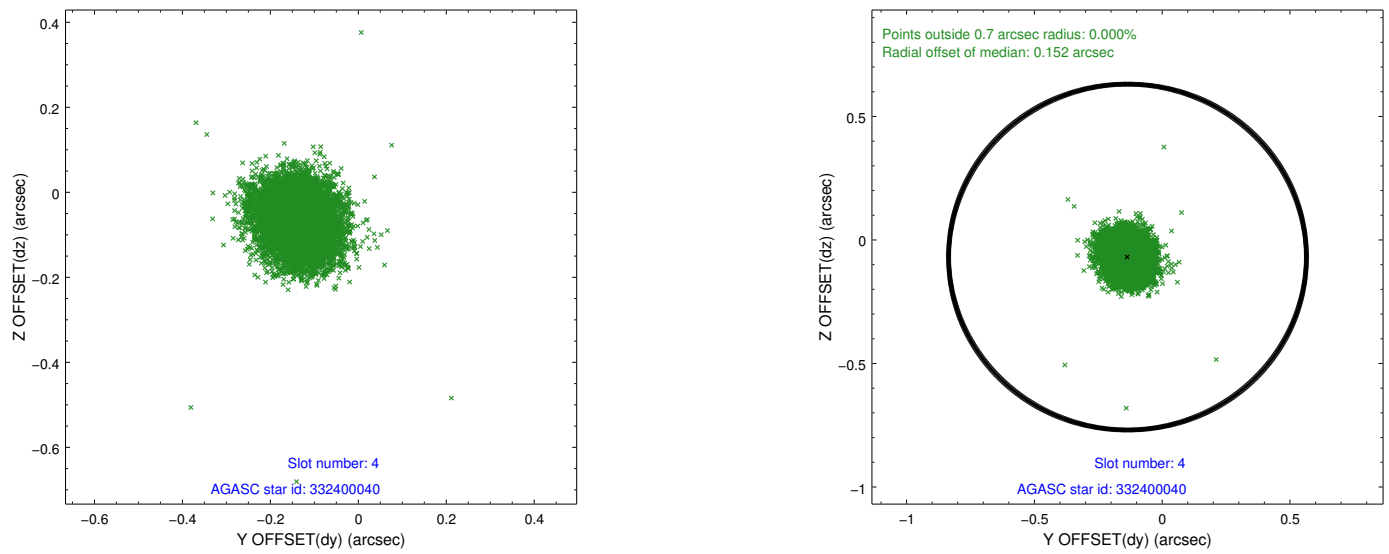
slot	status	id	mag	n_pts	med_dy	med_dz	dr1	dr2	ra	dec	mean_y	mean_z
0	FID	ACIS-S-2	6.97	4008	-0.105	-0.038	0.006	0.011	0.000000	0.000000	-768.12	-1736.42
1	FID	ACIS-S-4	7.06	4007	0.228	0.061	0.006	0.010	0.000000	0.000000	2145.36	171.91
2	FID	ACIS-S-5	7.09	4008	-0.154	-0.014	0.006	0.010	0.000000	0.000000	-1820.69	165.78
3	GUIDE	332400008	8.86	8003	0.169	0.148	0.070	0.113	203.197774	30.321360	-2299.49	-898.30
4	GUIDE	332400040	8.89	8011	-0.136	-0.069	0.076	0.122	201.663081	30.837002	1816.56	2122.28
5	GUIDE	332401992	6.56	8015	-0.227	-0.109	0.049	0.080	202.078139	31.149230	2070.87	437.16
6	GUIDE	332402816	7.39	8013	0.069	-0.049	0.053	0.084	203.199728	30.748307	-999.37	-1718.52
7	GUIDE	332404960	8.53	8010	0.127	0.078	0.068	0.107	203.086092	30.473272	-1652.06	-894.59

2.4 Star Slots

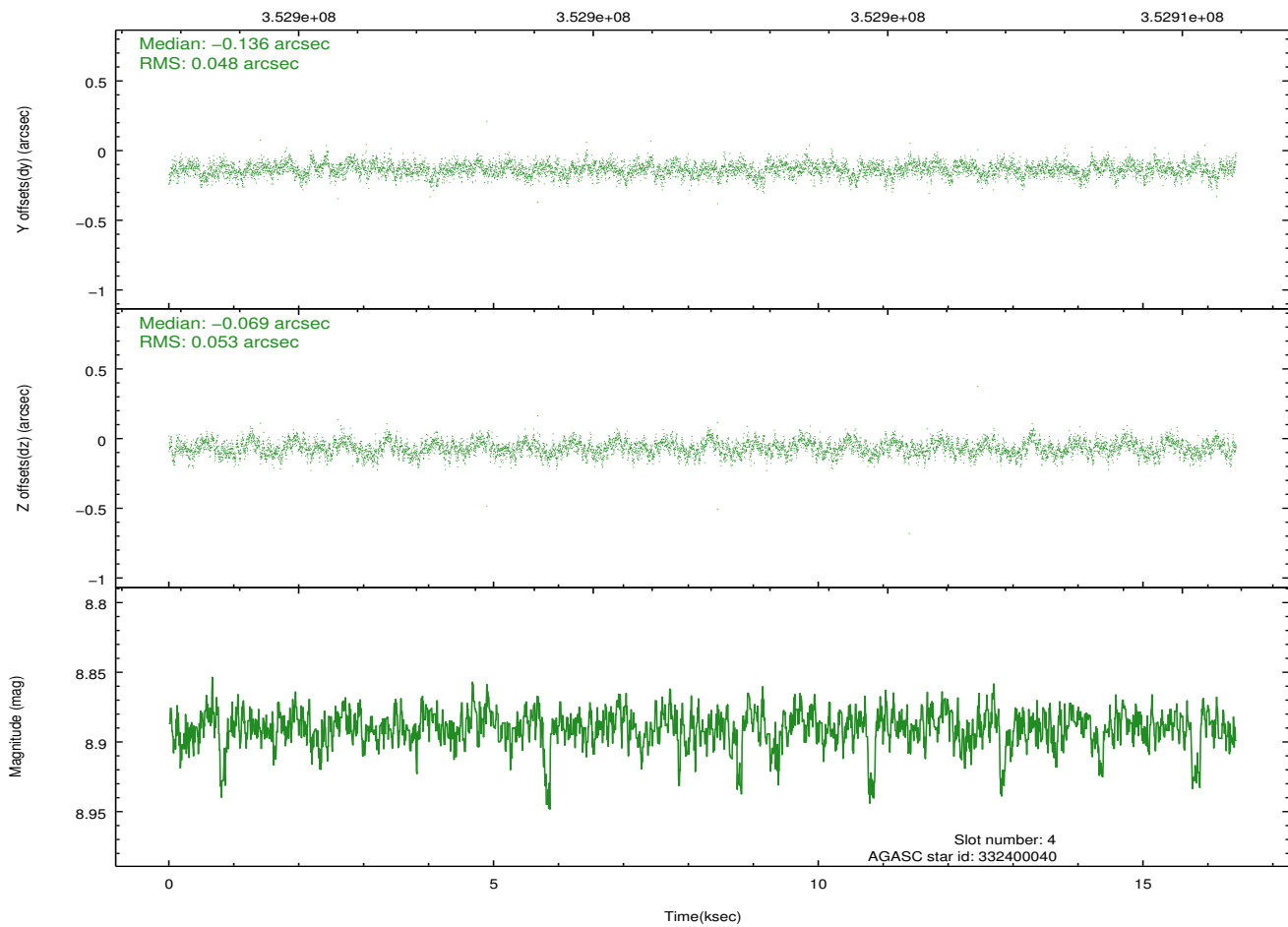
2.4.1 Slot 3



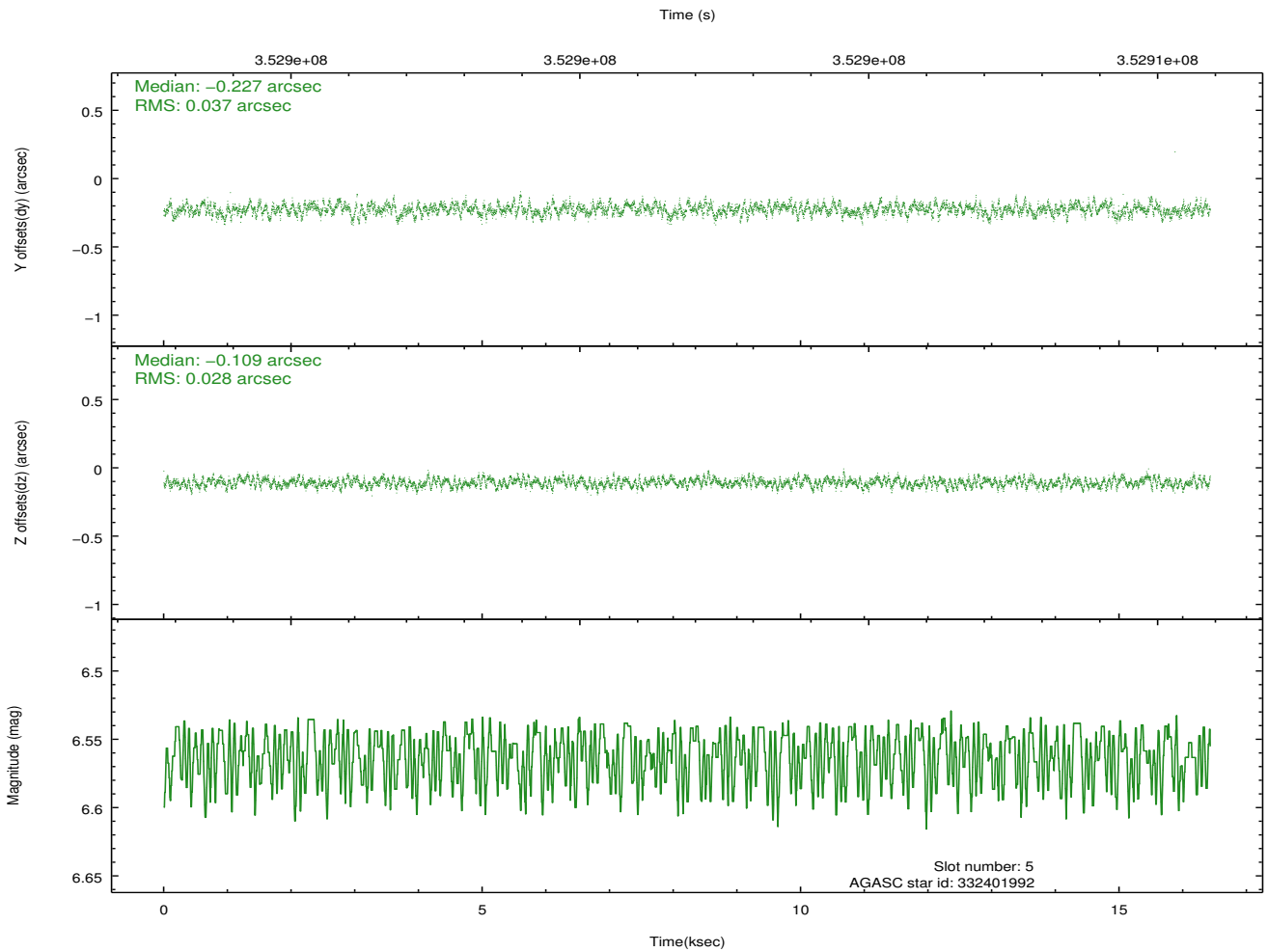
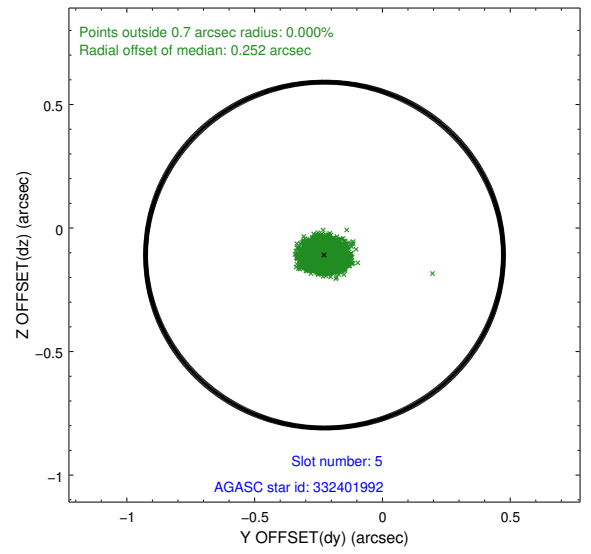
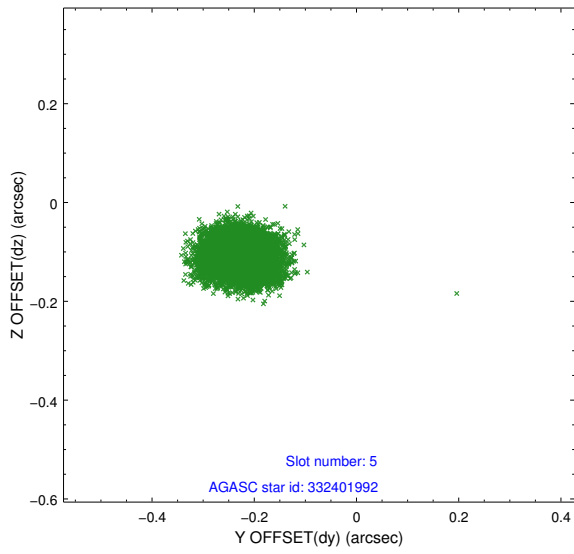
2.4.2 Slot 4



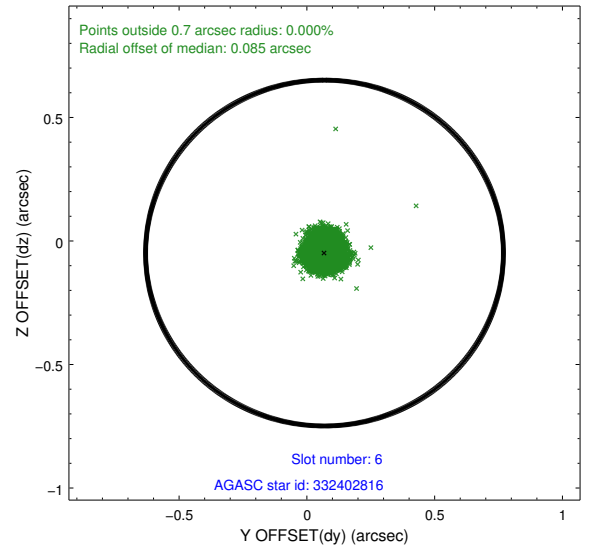
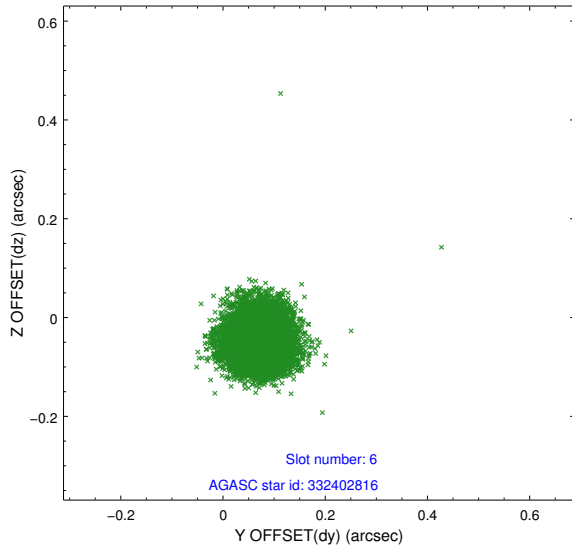
Time (s)



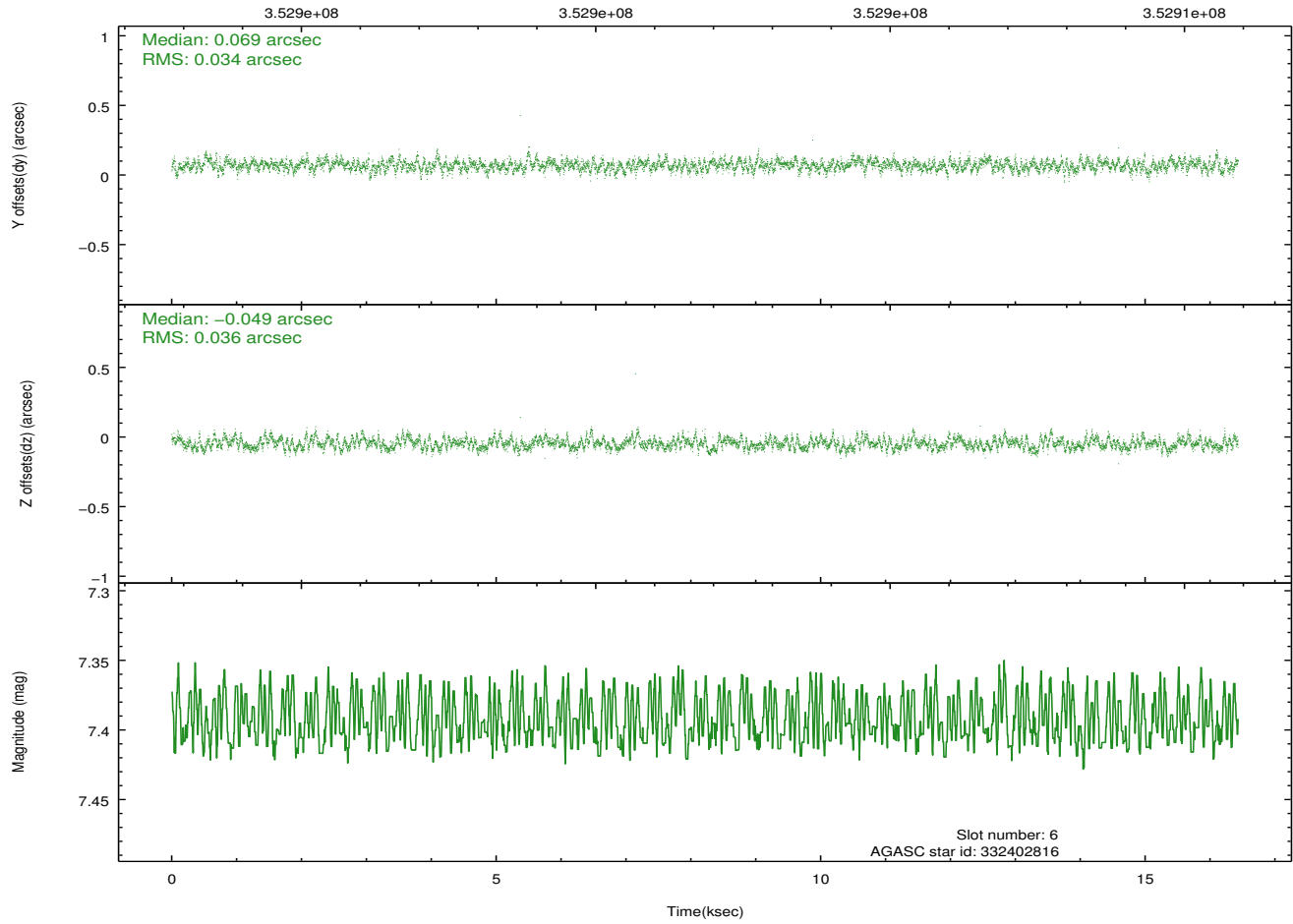
2.4.3 Slot 5



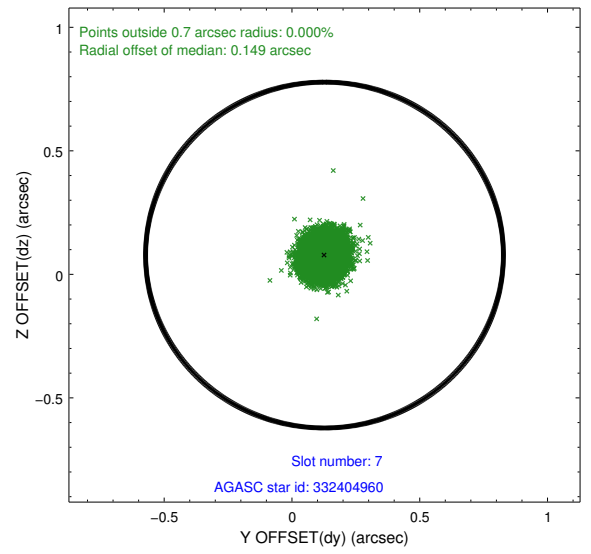
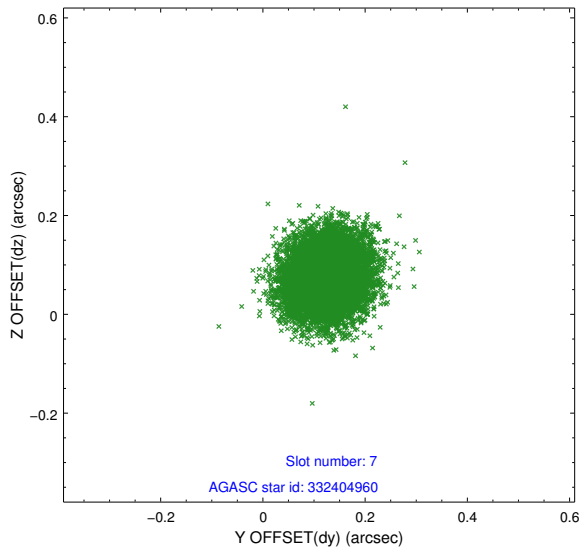
2.4.4 Slot 6



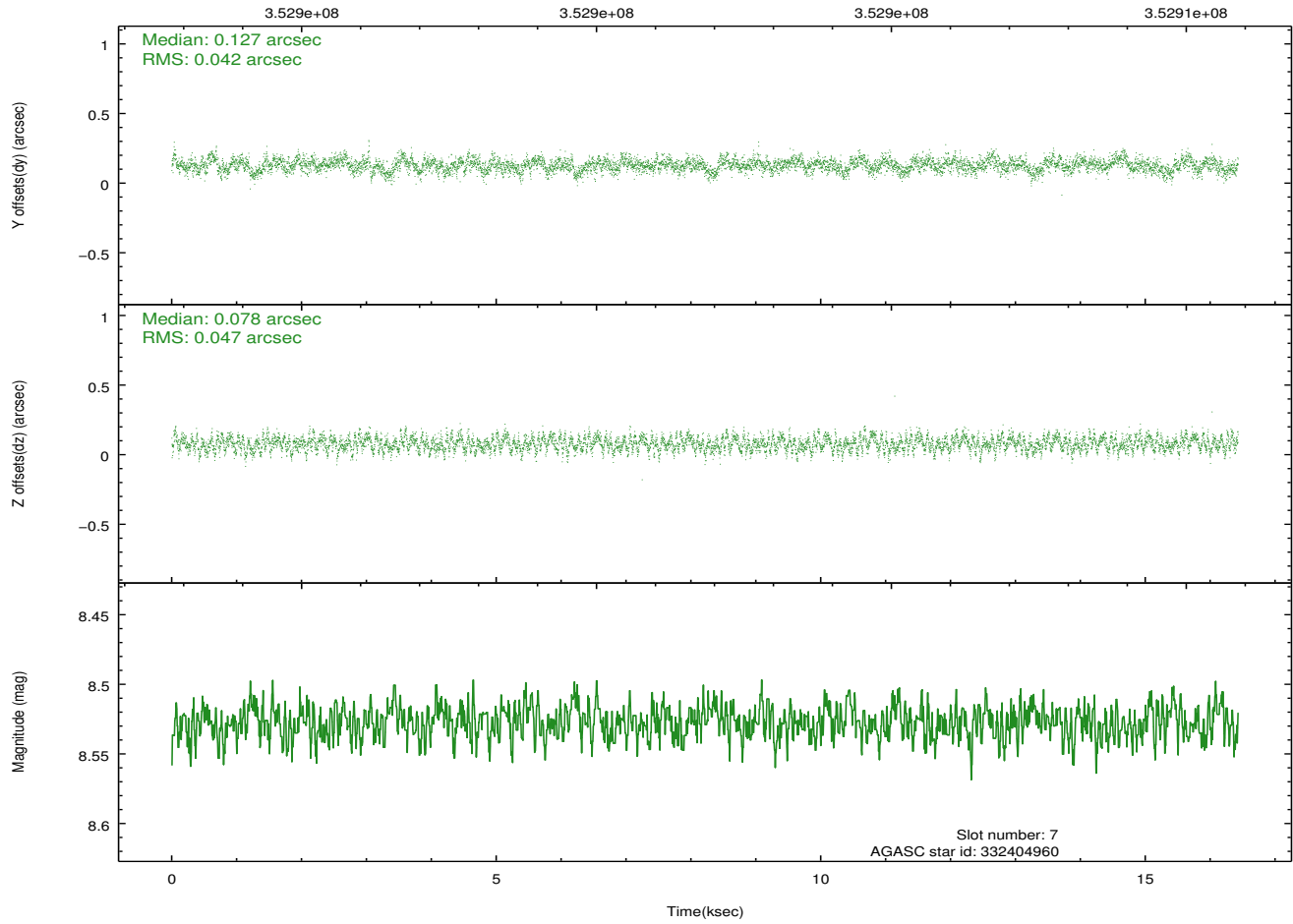
Time (s)



2.4.5 Slot 7

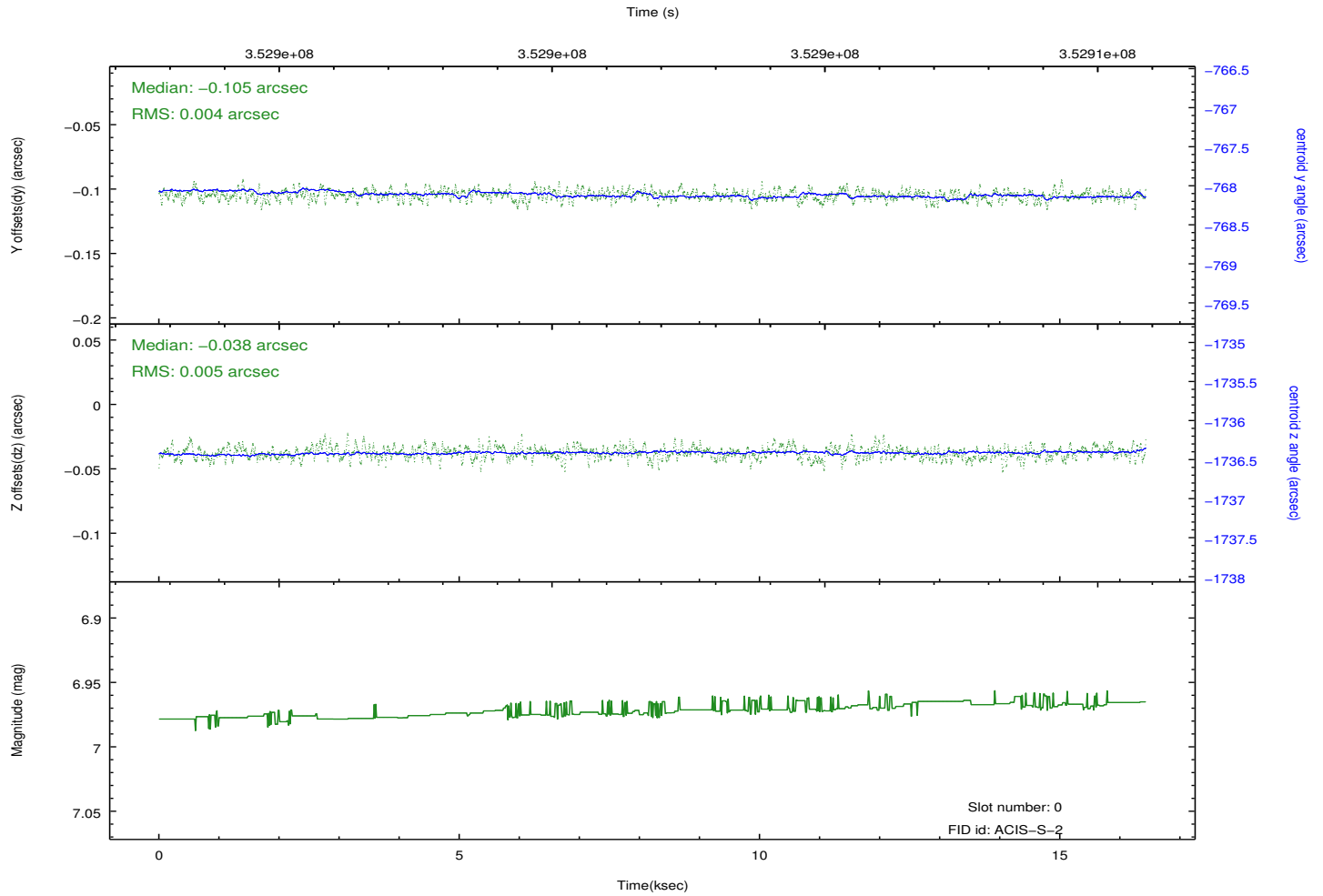
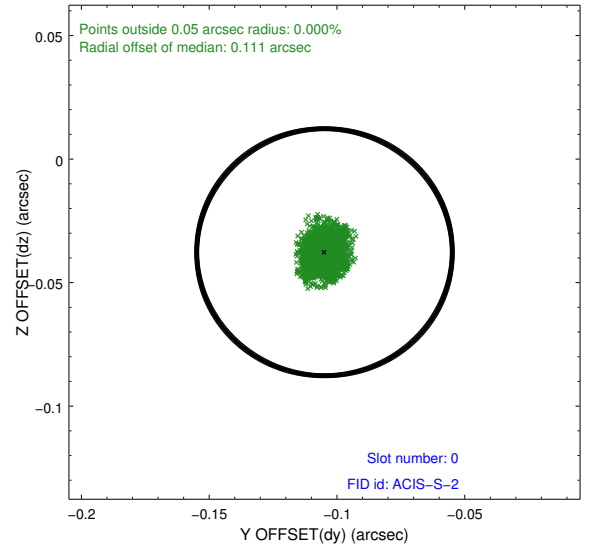
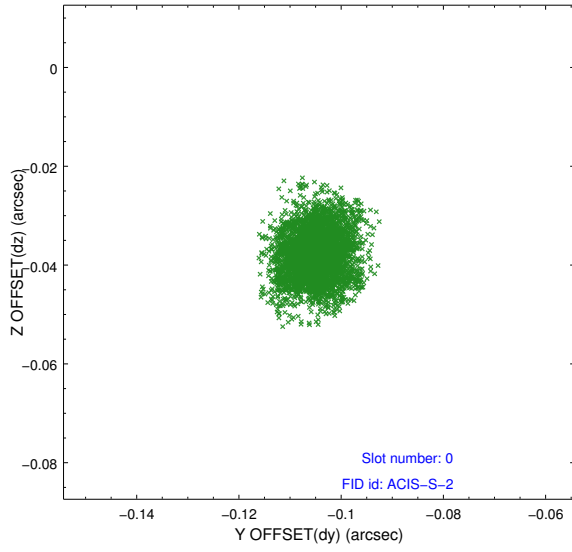


Time (s)

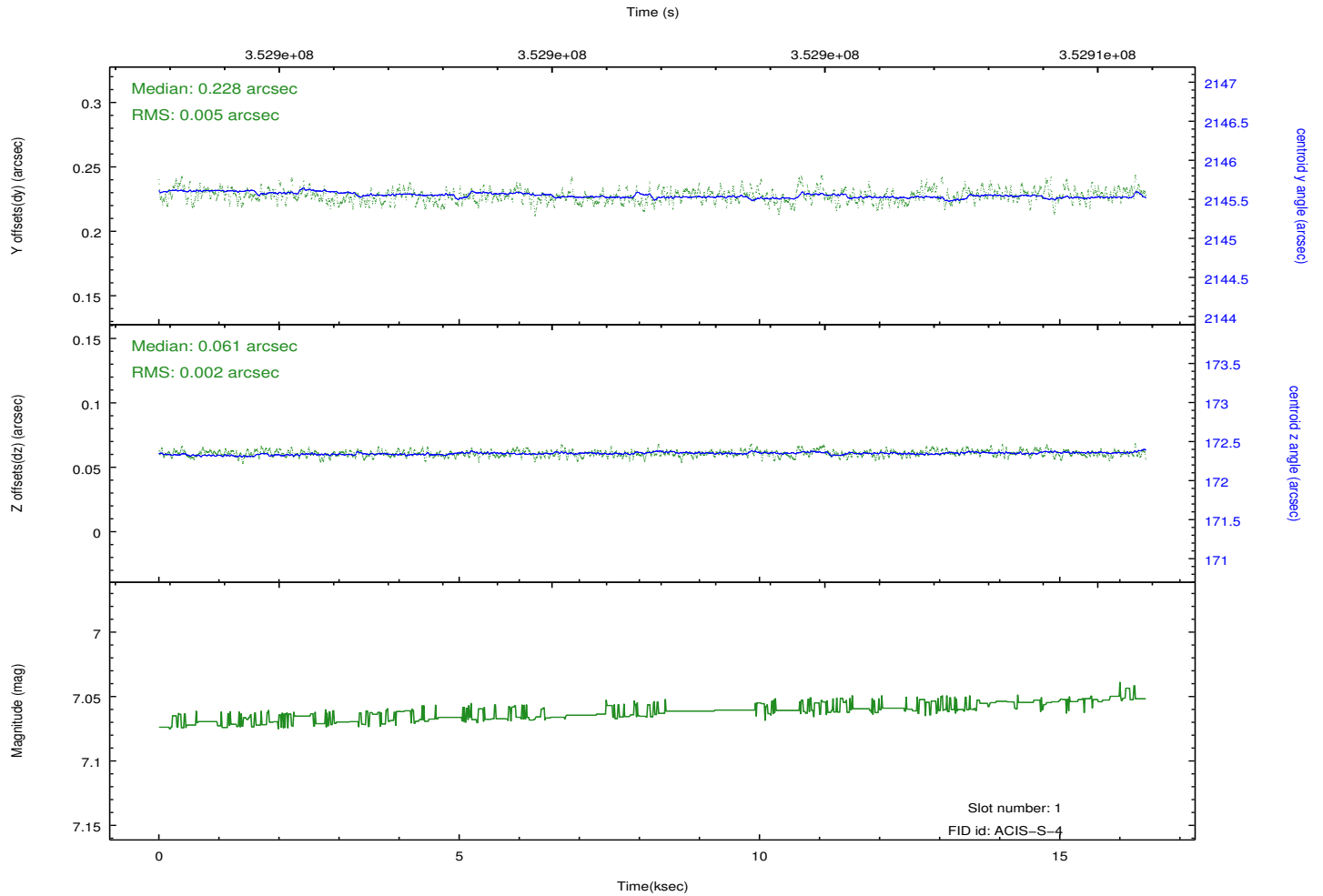
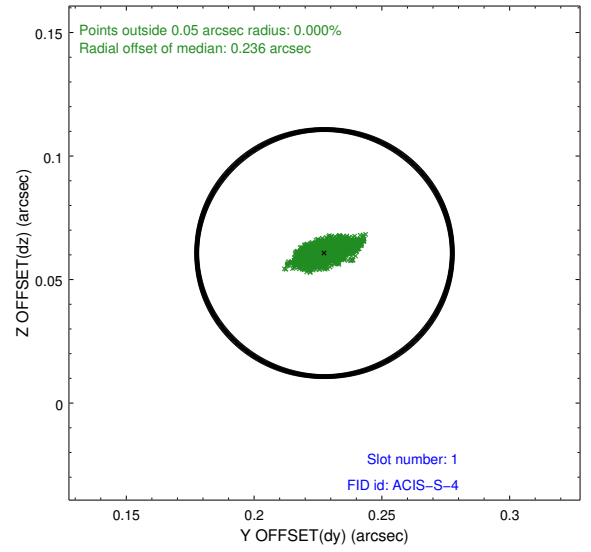
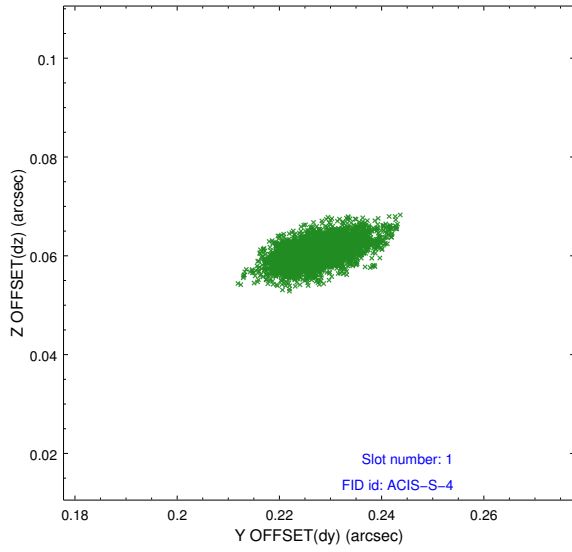


2.5 FID Slots

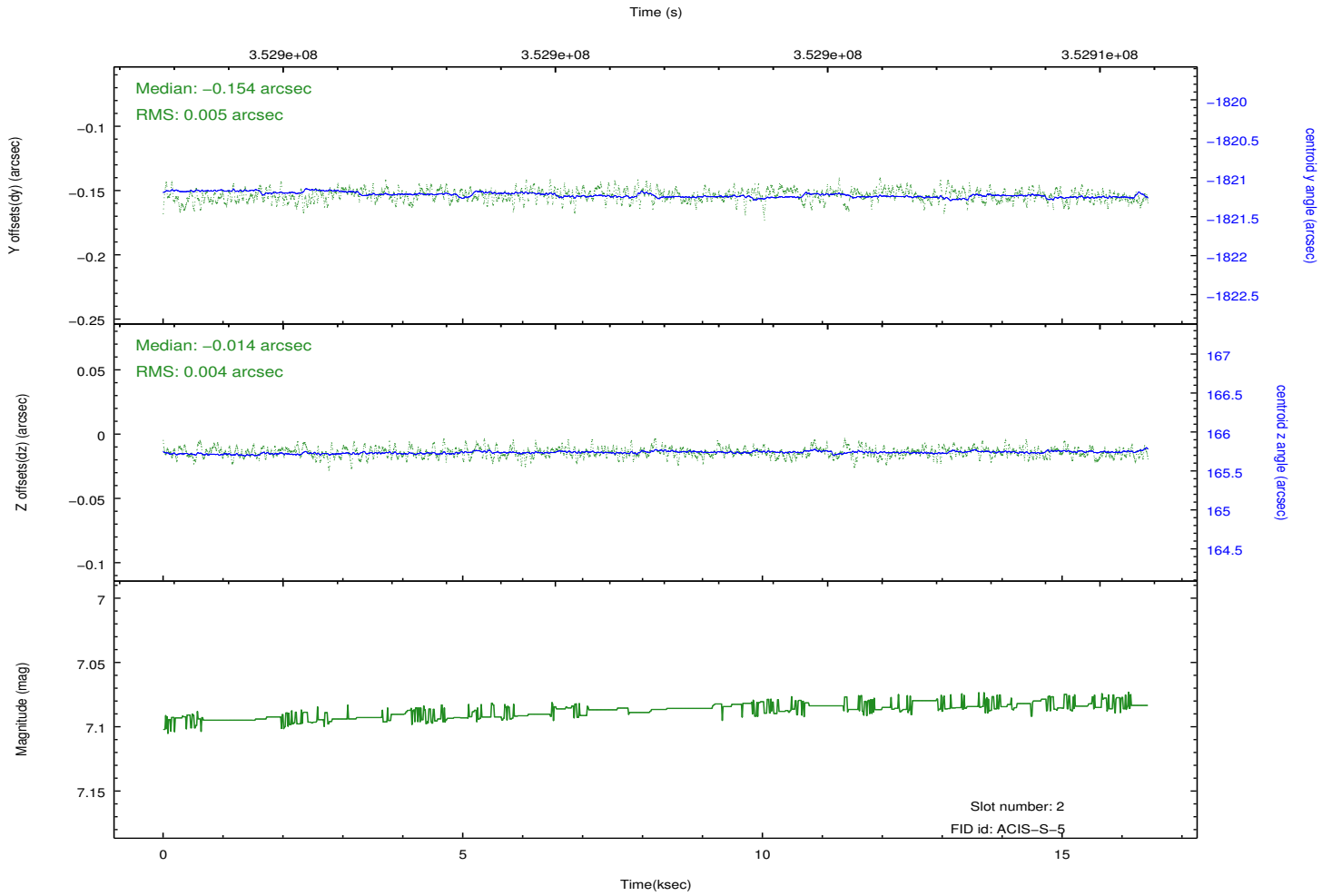
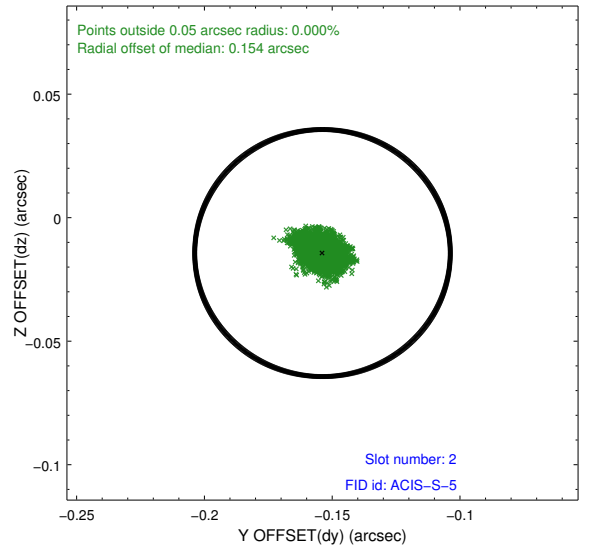
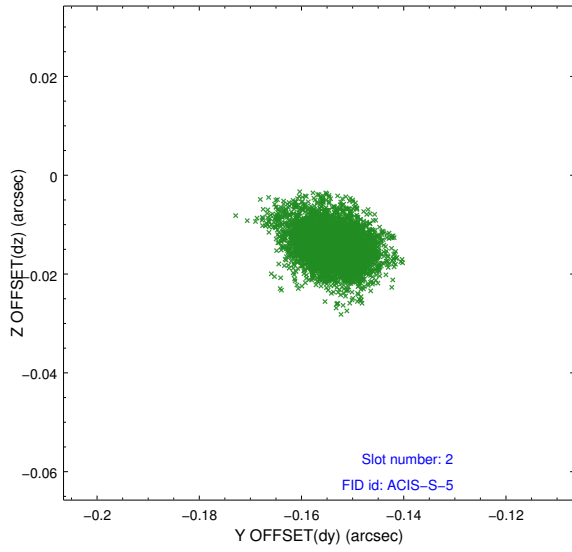
2.5.1 Slot 0



2.5.2 Slot 1



2.5.3 Slot 2



A Summary

A.1 Status

V&V Scientist	Jen Lauer
V&V Date (YYYY-MM-DD)	2012.06.07
V&V Edition	1
V&V Disposition and Status	OK
V&V Charge Time	16.0332001

A.2 Comments