

V&V Reference Report

L2 ASCDS Version : 8.4.5

Observation 10537 - L2 Version 2
Chandra X-Ray Center

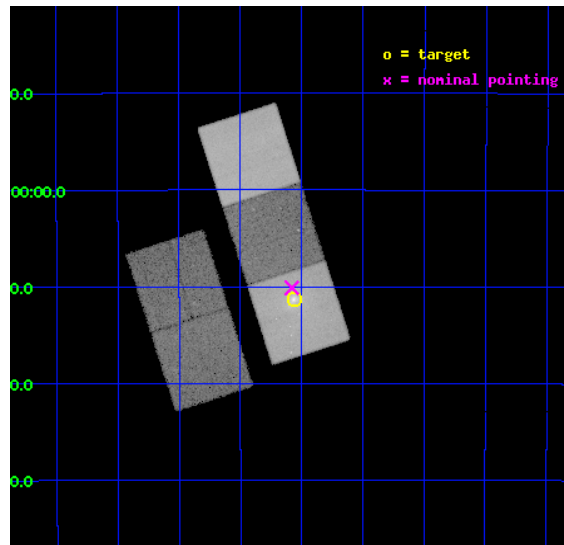
L2 Processing Date : Jun 13 2012

Contents

1	Front	2
2	OBI	3
2.1	OBI	3
2.1.1	Images	3
2.1.2	Bias	3
2.1.3	Parameters	4
2.1.4	Events	4
2.2	Compared Parameters	5
2.3	Aspect	6
2.4	Star Slots	9
2.4.1	Slot 3	9
2.4.2	Slot 4	10
2.4.3	Slot 5	11
2.4.4	Slot 6	12
2.4.5	Slot 7	13
2.5	FID Slots	14
2.5.1	Slot 0	14
2.5.2	Slot 1	15
2.5.3	Slot 2	16
A	Summary	17
A.1	Status	17
A.2	Comments	17

1 Front

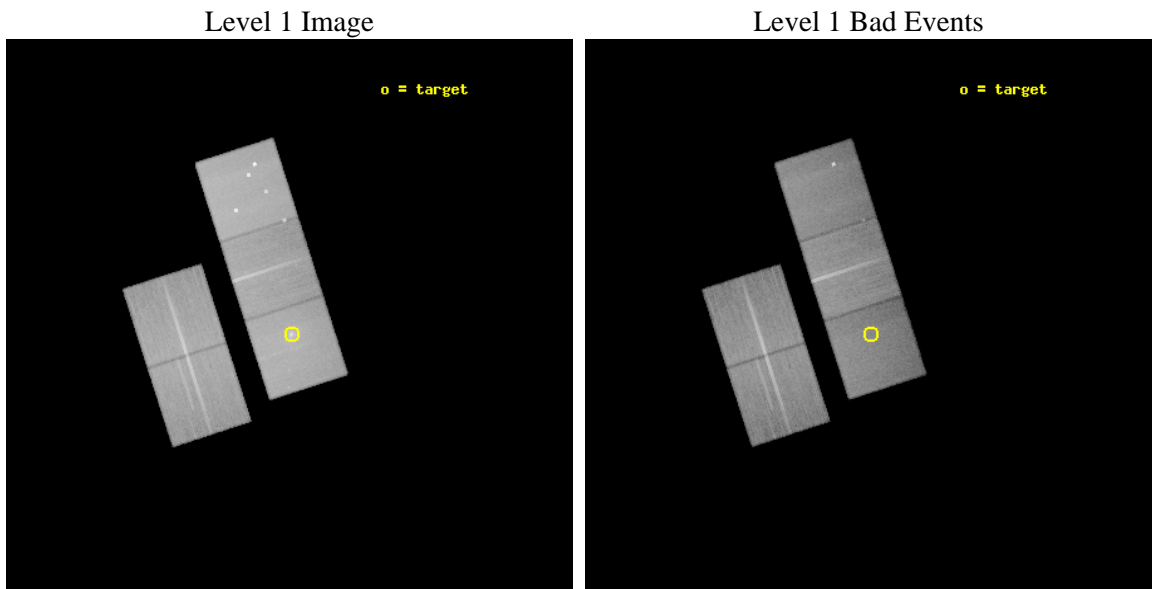
seq_num	600730	Sequence number
obs_id	10537	Observation id
title	Bondi accretion and jet power in a complete sample of elliptical galaxies	Proposal title
observer	Prof. Steven Allen	Principal investigator
object	IC 1860	Source name
dtcycle	0	
cycle	P	events from which exps? Prim/Second/Both
ra_targ	42.390417	Observer's specified target RA [deg]
dec_targ	-31.189167	Observer's specified target Dec [deg]
ra_nom	42.395059839302	Nominal RA [deg]
dec_nom	-31.168614824707	Nominal Dec [deg]
roll_nom	72.203591047328	Nominal Roll [deg]
revision	2	Processing version of data
ontime	37772.327469349	Sum of GTIs [s]
livetime	37278.804203379	Livetime [s]
ontime2	37756.458377361	Sum of GTIs [s]
ontime3	37762.781358302	Sum of GTIs [s]
ontime5	37772.286429346	Sum of GTIs [s]
ontime6	37772.245399237	Sum of GTIs [s]
ontime7	37772.327469349	Sum of GTIs [s]
l2events	506183	Number of level 2 events



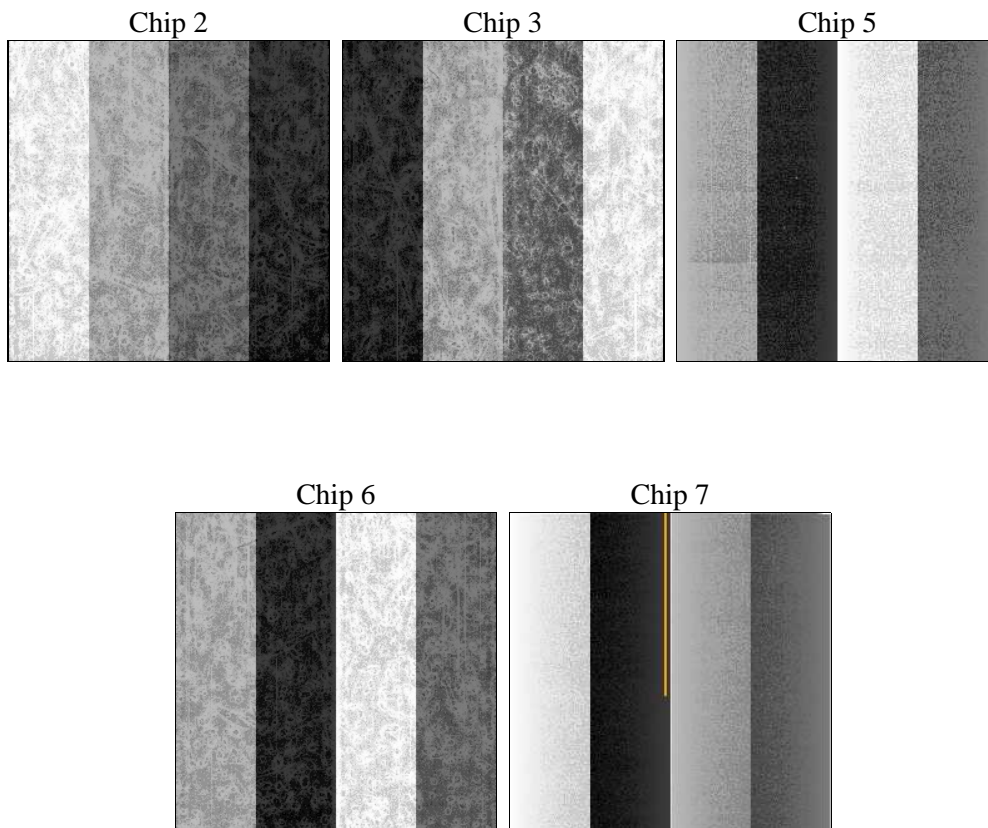
2 OBI

2.1 OBI

2.1.1 Images



2.1.2 Bias



2.1.3 Parameters

obi_num	0	Obi number	sched_exp_time	38000.000000	[s] Scheduled observation exposure time
ascdsver	8.4.5	Processing system revision	ontime	37772.327469349	Sum of GTIs [s]
caldbver	4.4.10	 	ontime2	37756.458377361	Sum of GTIs [s]
date	2012-06-13T05:07:46	Date and time of file creation	ontime3	37762.781358302	Sum of GTIs [s]
revision	2	Processing version of data	ontime5	37772.286429346	Sum of GTIs [s]
			ontime6	37772.245399237	Sum of GTIs [s]
			ontime7	37772.327469349	Sum of GTIs [s]
			l1events	1895230	Number of level 1 events

2.1.4 Events

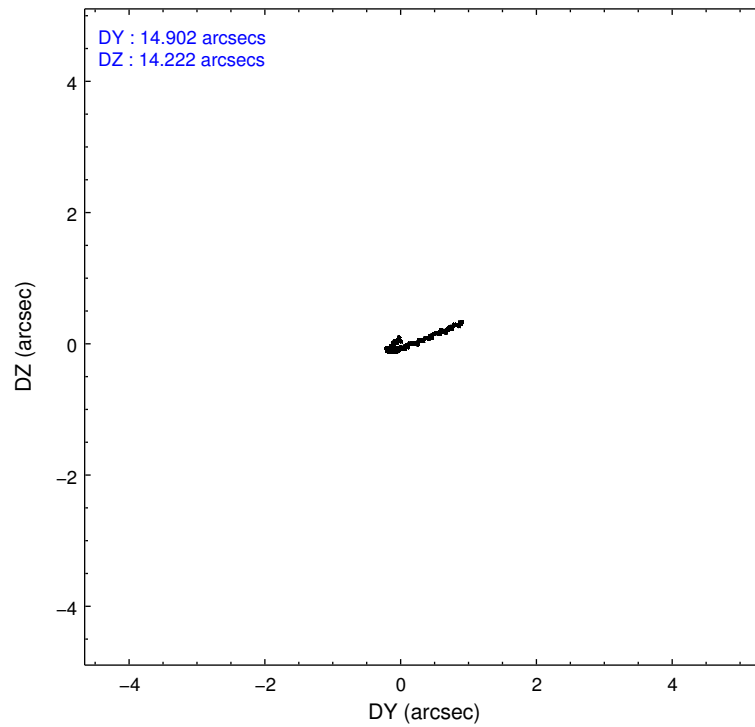
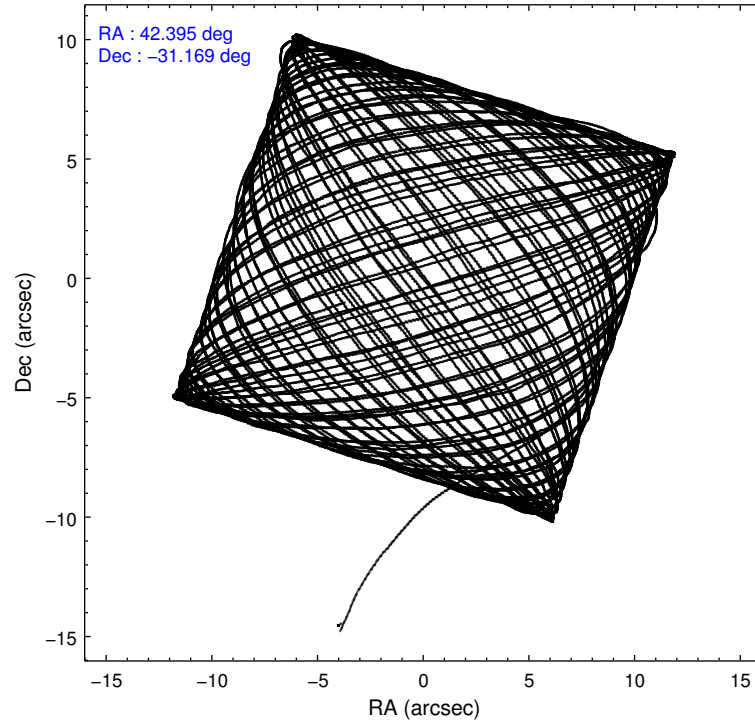
	ccd 2	ccd 3	ccd 5	ccd 6	ccd 7
level 1 events	339505	320853	485773	335643	413456
rejected events	307085	289317	240018	298162	207095
rejected %	90%	90%	49%	88%	50%

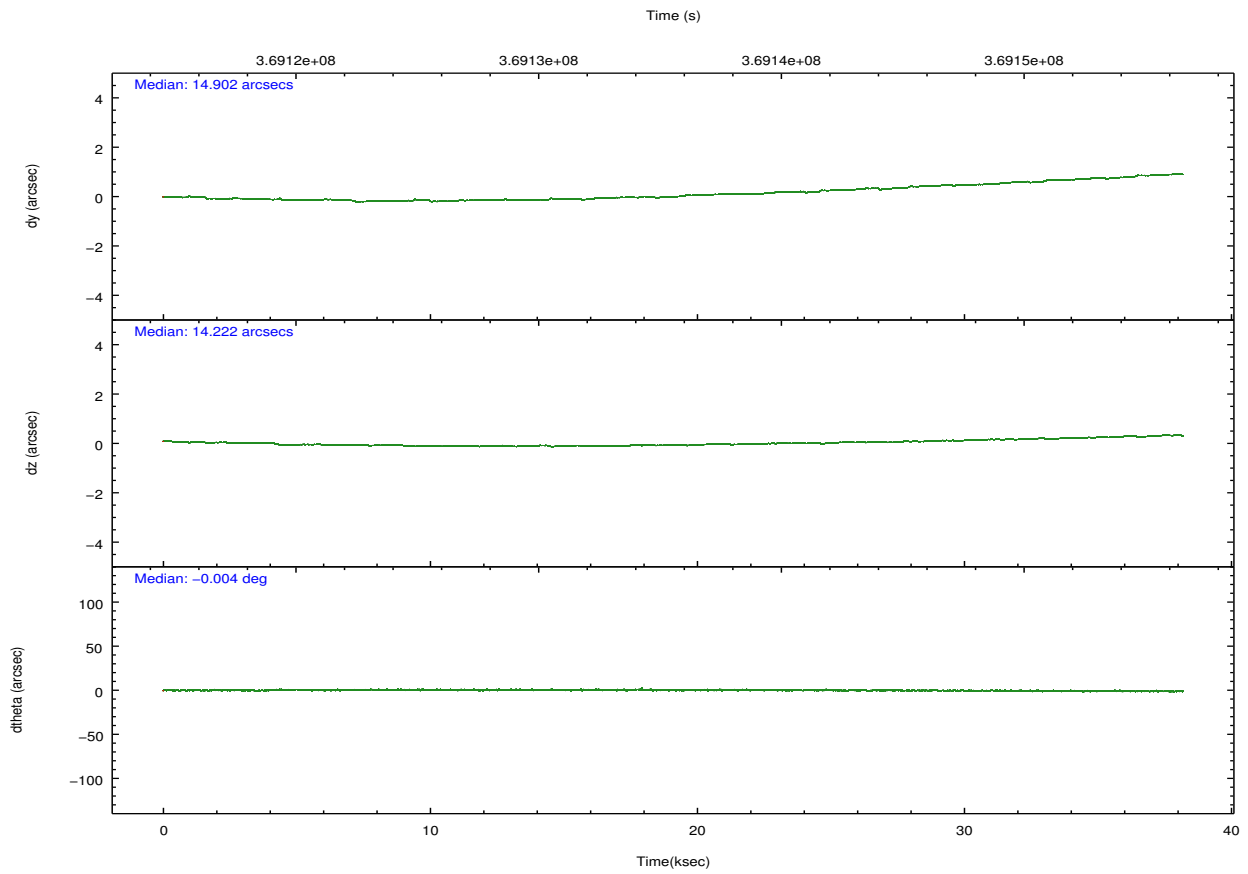
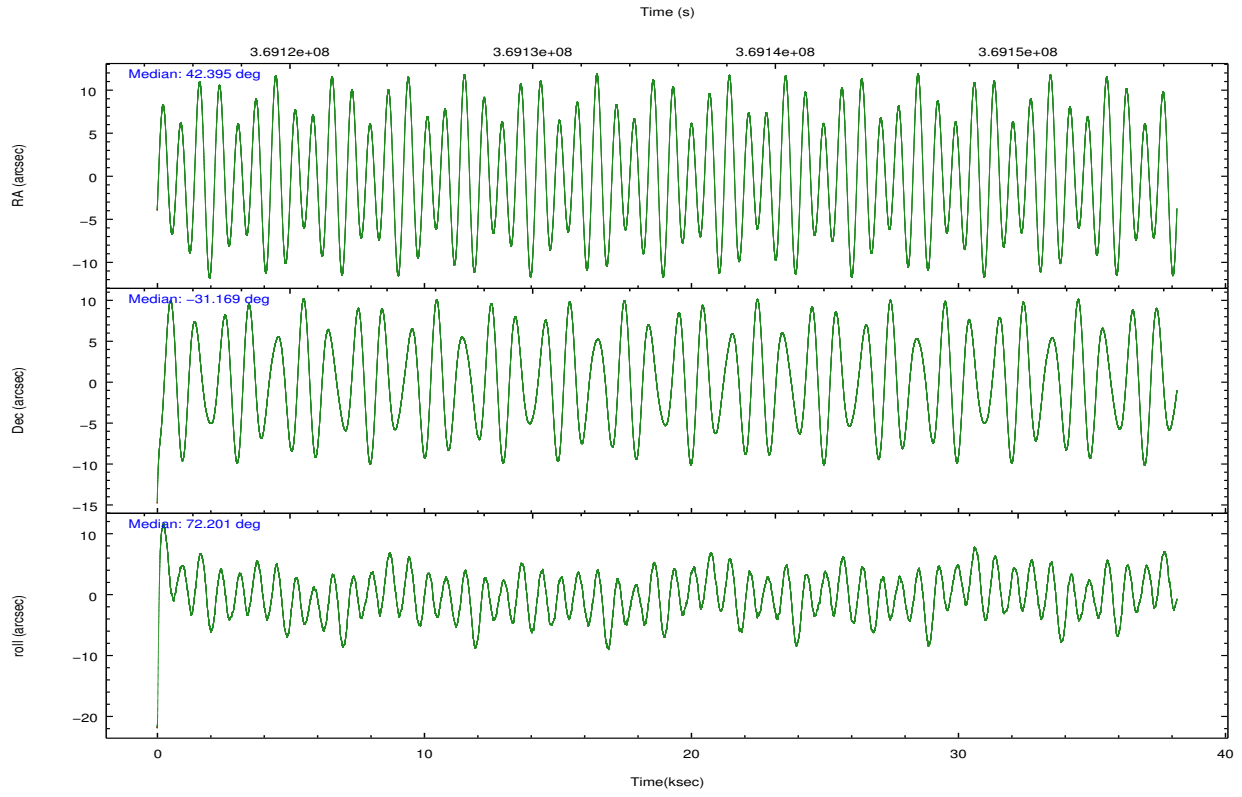
	ccd 2	ccd 3	ccd 5	ccd 6	ccd 7
grade 0 events	11906	11196	32775	14659	27074
	3%	3%	6%	4%	6%
grade 1 events	184	171	984	185	525
	0%	0%	0%	0%	0%
grade 2 events	7799	7063	72939	7850	44581
	2%	2%	15%	2%	10%
grade 3 events	3392	3465	9410	3730	19524
	0%	1%	1%	1%	4%
grade 4 events	3510	3488	9111	3682	19448
	1%	1%	1%	1%	4%
grade 5 events	10976	13403	37376	13574	39835
	3%	4%	7%	4%	9%
grade 6 events	5818	6329	121563	7565	95744
	1%	1%	25%	2%	23%
grade 7 events	295920	275738	201615	284398	166725
	87%	85%	41%	84%	40%

2.2 Compared Parameters

Parameter	Planned	Actual	Parameter	Planned	Actual
Instrument	ACIS	ACIS	Obspar format version number	7	7
Detector	ACIS-23567	ACIS-23567	Obspar file type	PREDICTED	ACTUAL
Grating	NONE	NONE	Obspar update status	NONE	UPDATED
Data mode	VFAINT	VFAINT	CCD I0 on	N	N
Observation mode	POINTING	POINTING	CCD I1 on	N	N
[deg] Pointing RA	42.402238	42.39505983930249	CCD I2 on	O1	Y
[deg] Pointing Dec	-31.195250	-31.16861482470656	CCD I3 on	Y	Y
[deg] Pointing Roll	72.050690	72.20359104732779	CCD S0 on	N	N
[mm] SIM focus pos	-0.684267	-0.6828225247311905	CCD S1 on	Y	Y
[mm] SIM defocus	0	0.001444936568705701	CCD S2 on	Y	Y
[mm] SIM translation stage pos	-190.132523	-190.1400660498719	CCD S3 on	Y	Y
[mm] SIM translation stage offset	0	0.00754346686406393	CCD S4 on	N	N
[s] Observation start time (MET)	369116629.184000	369115720.46675	CCD S5 on	N	N
Observation start date	2009-09-12T04:22:43	2009-09-12T04:08:40	Number of optional ACIS chips dropped	0	0
[s] Observation end time (MET)	369154629.184000	369155558.11875	On-chip summing requested	N	N
Observation end date	2009-09-12T14:56:03	2009-09-12T15:12:38	Subarray requested	NONE	NONE
Read mode	TIMED	TIMED	Alternating exposures requested	N	N
			[s] Primary exposure time	0.000000	3.1

2.3 Aspect



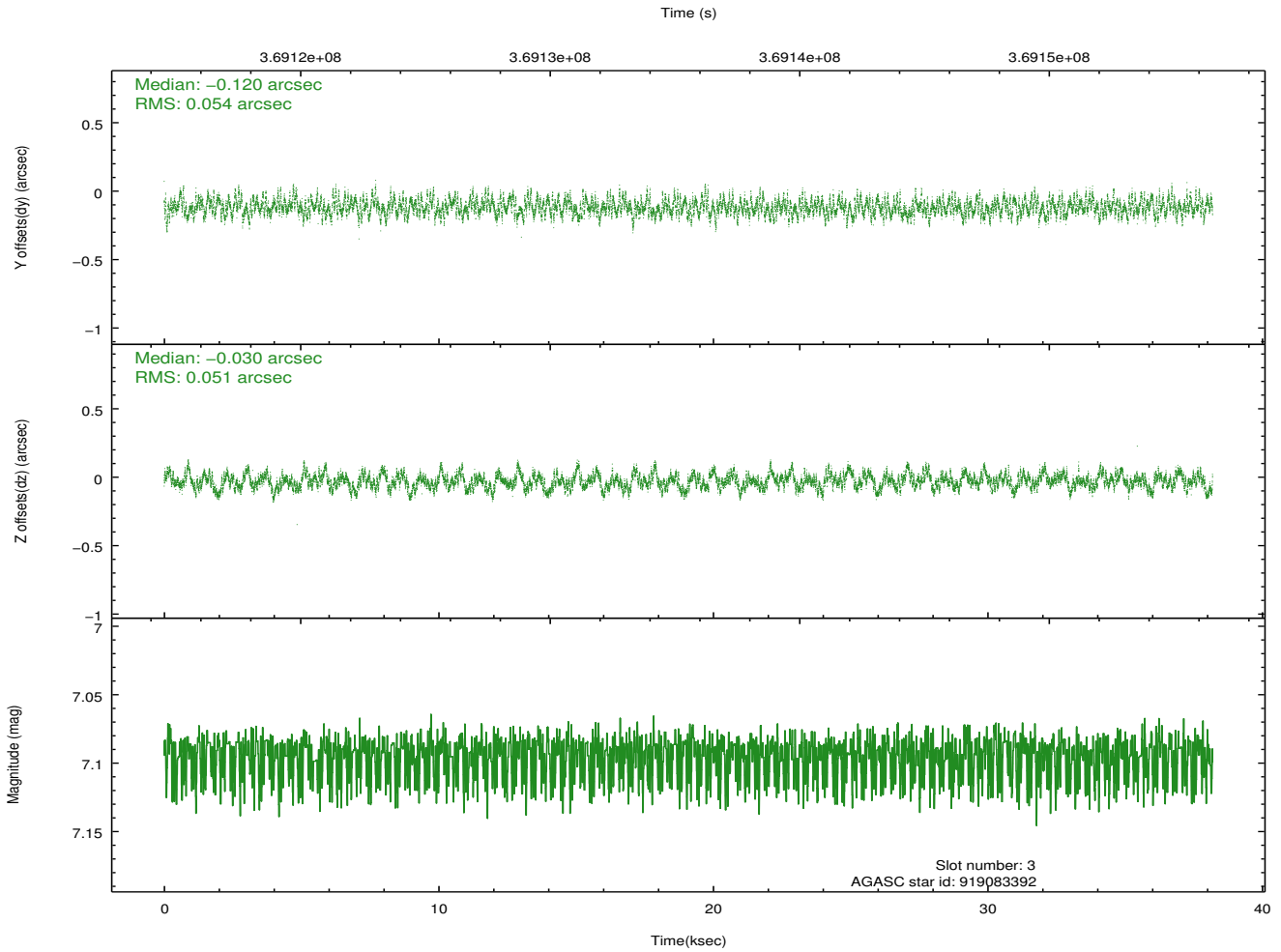
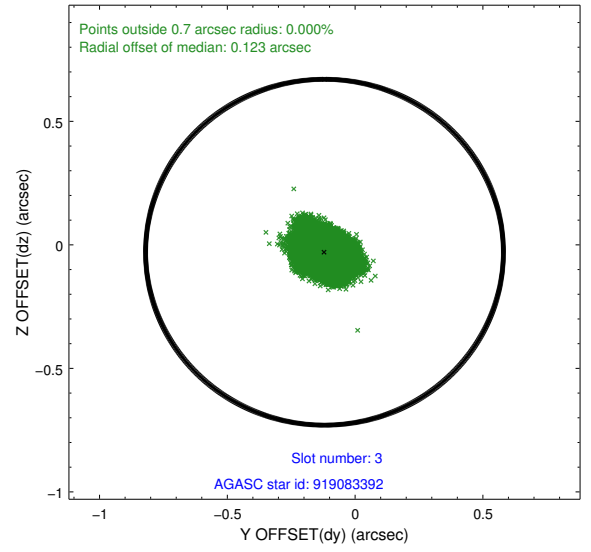
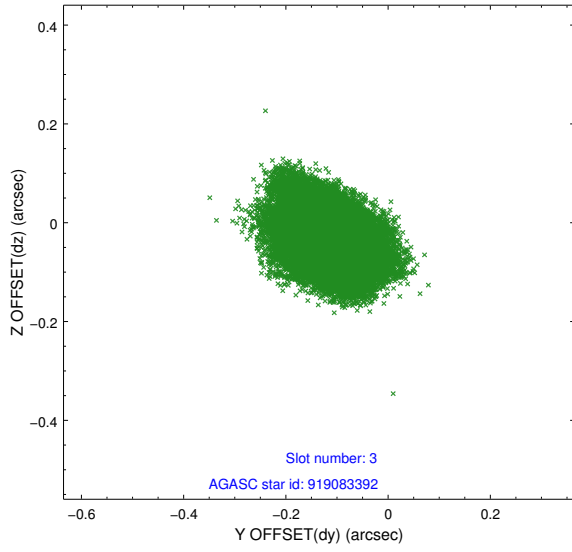


Slot Statistics

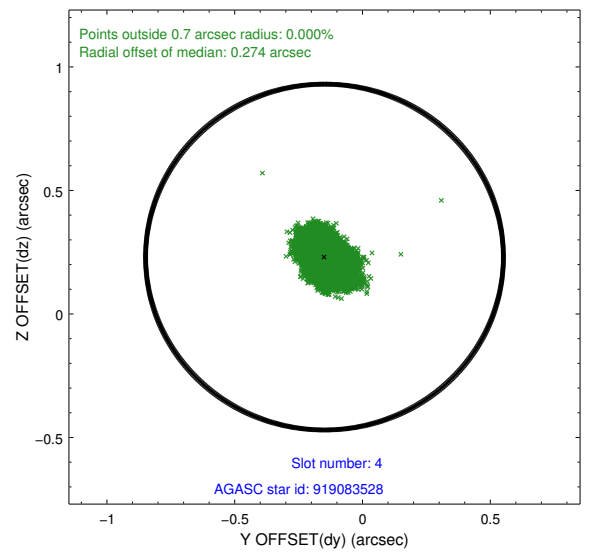
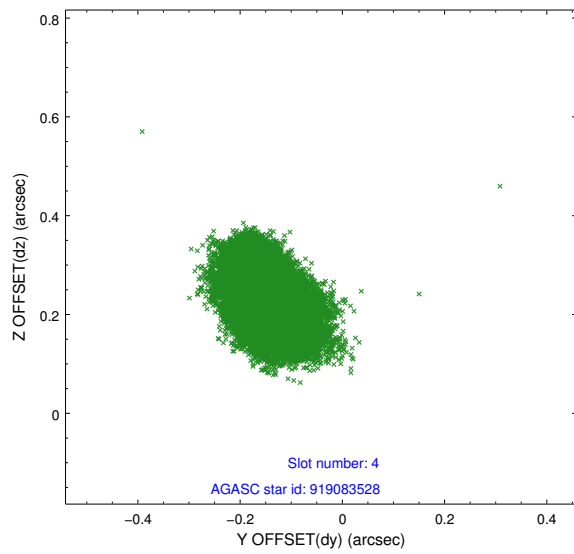
slot	status	id	mag	n_pts	med_dy	med_dz	dr1	dr2	ra	dec	mean_y	mean_z
0	FID	ACIS-S-2	6.90	9316	-0.090	-0.057	0.010	0.022	0.000000	0.000000	-768.12	-1735.66
1	FID	ACIS-S-4	6.98	9316	0.222	0.058	0.008	0.024	0.000000	0.000000	2145.46	172.91
2	FID	ACIS-S-5	7.01	9316	-0.165	0.007	0.012	0.037	0.000000	0.000000	-1821.00	166.56
3	GUIDE	919083392	7.09	18628	-0.120	-0.030	0.081	0.128	42.037399	-31.423137	-1128.42	812.96
4	GUIDE	919083528	6.58	18630	-0.149	0.230	0.075	0.120	42.984357	-30.814519	1855.42	-1291.45
5	GUIDE	919083704	9.28	18607	0.047	-0.040	0.112	0.172	42.225333	-31.565962	-1437.46	104.87
6	GUIDE	919084528	8.15	18626	-0.053	-0.109	0.073	0.118	42.357016	-30.812891	1266.75	557.28
7	GUIDE	918946272	10.26	18584	0.270	-0.053	0.232	0.370	41.707540	-31.612378	-2090.95	1561.58

2.4 Star Slots

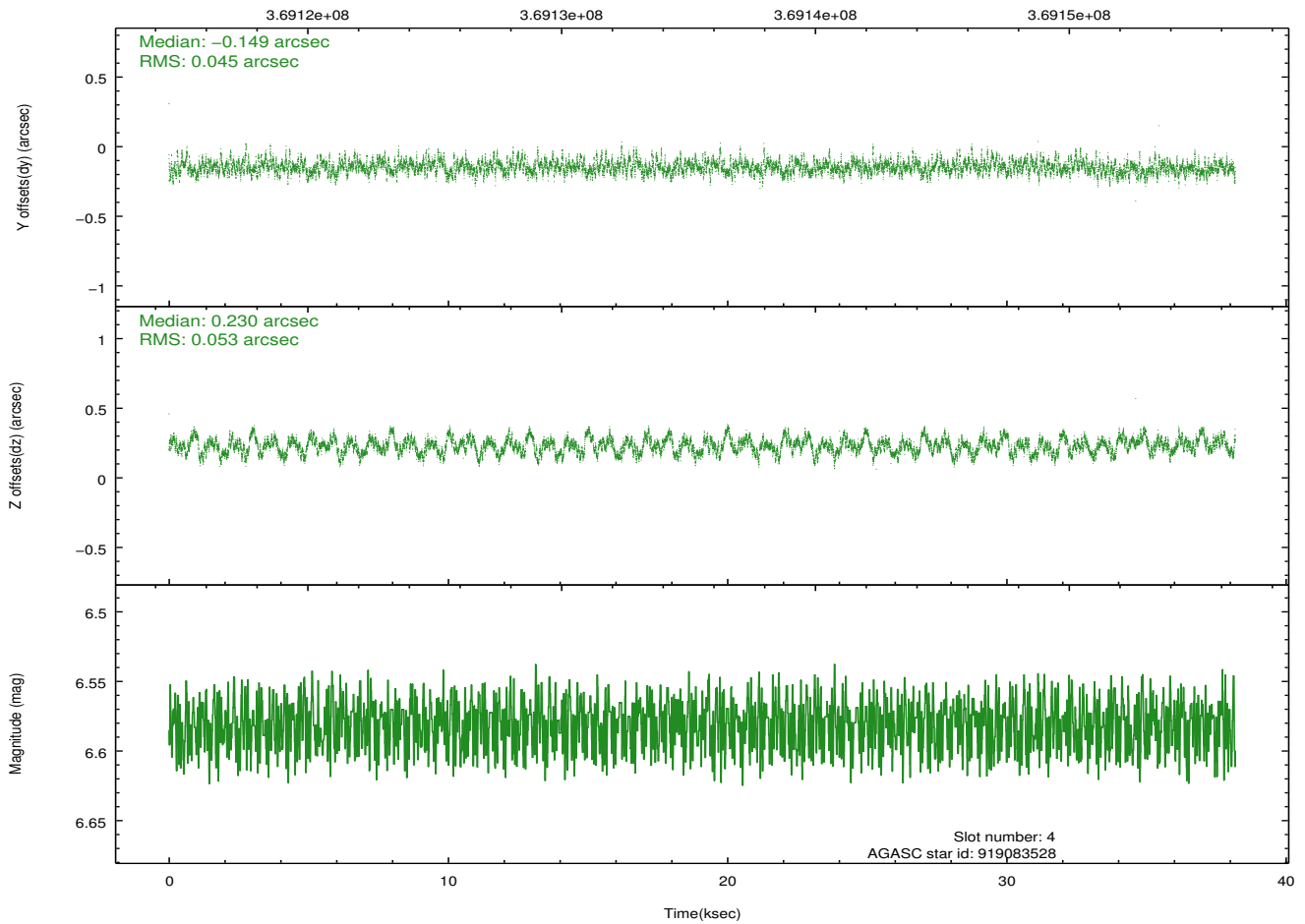
2.4.1 Slot 3



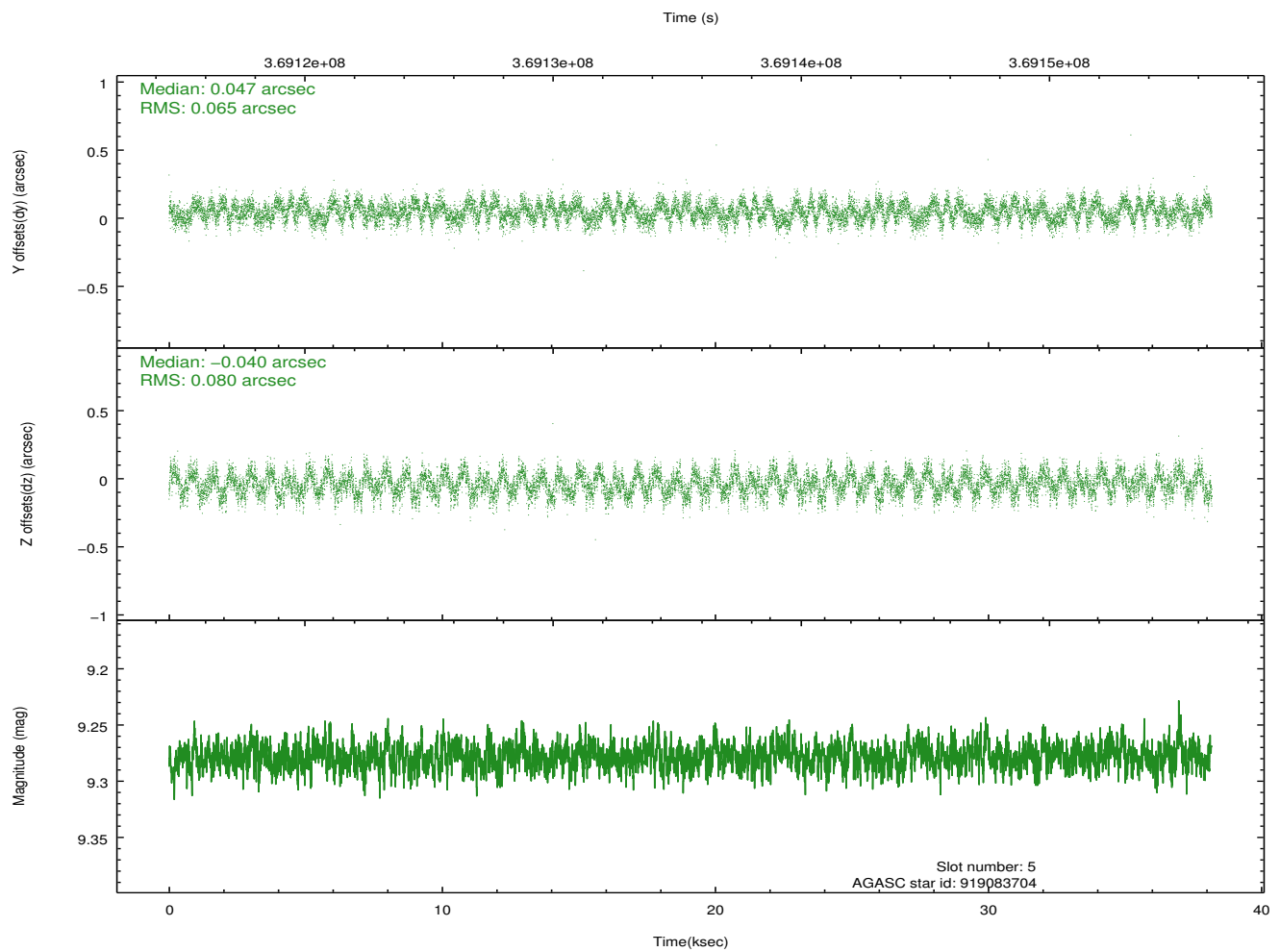
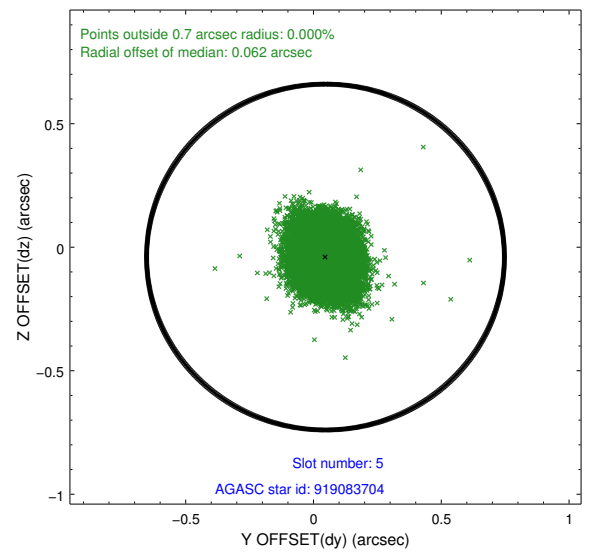
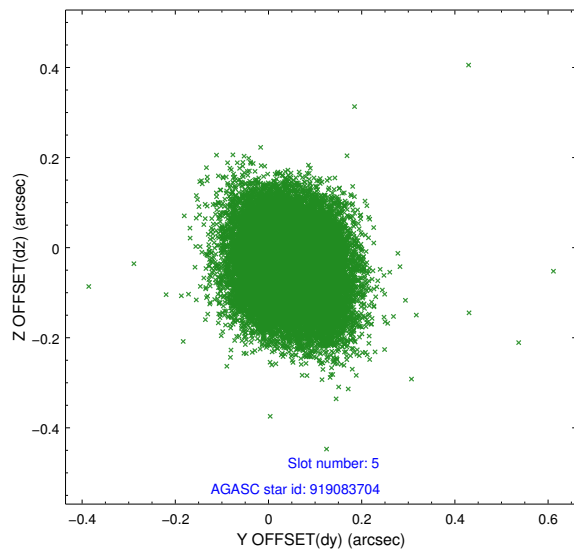
2.4.2 Slot 4



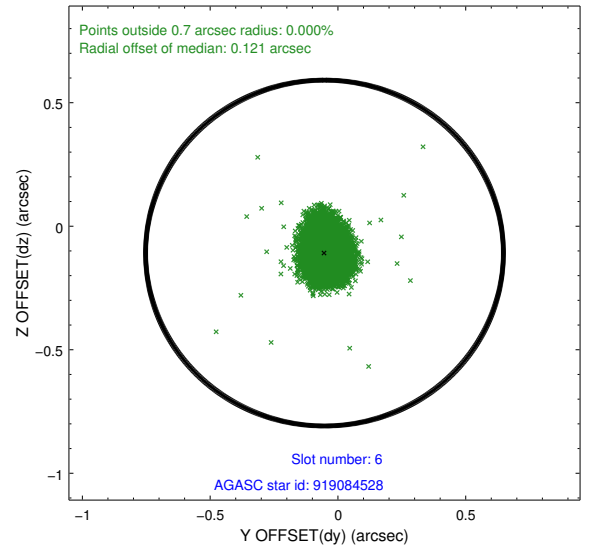
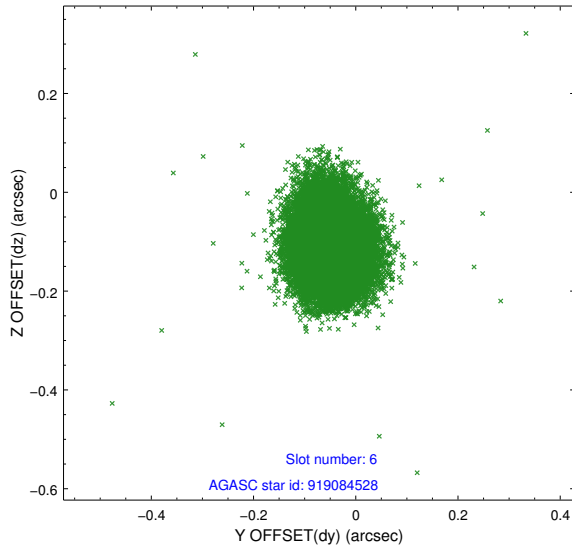
Time (s)



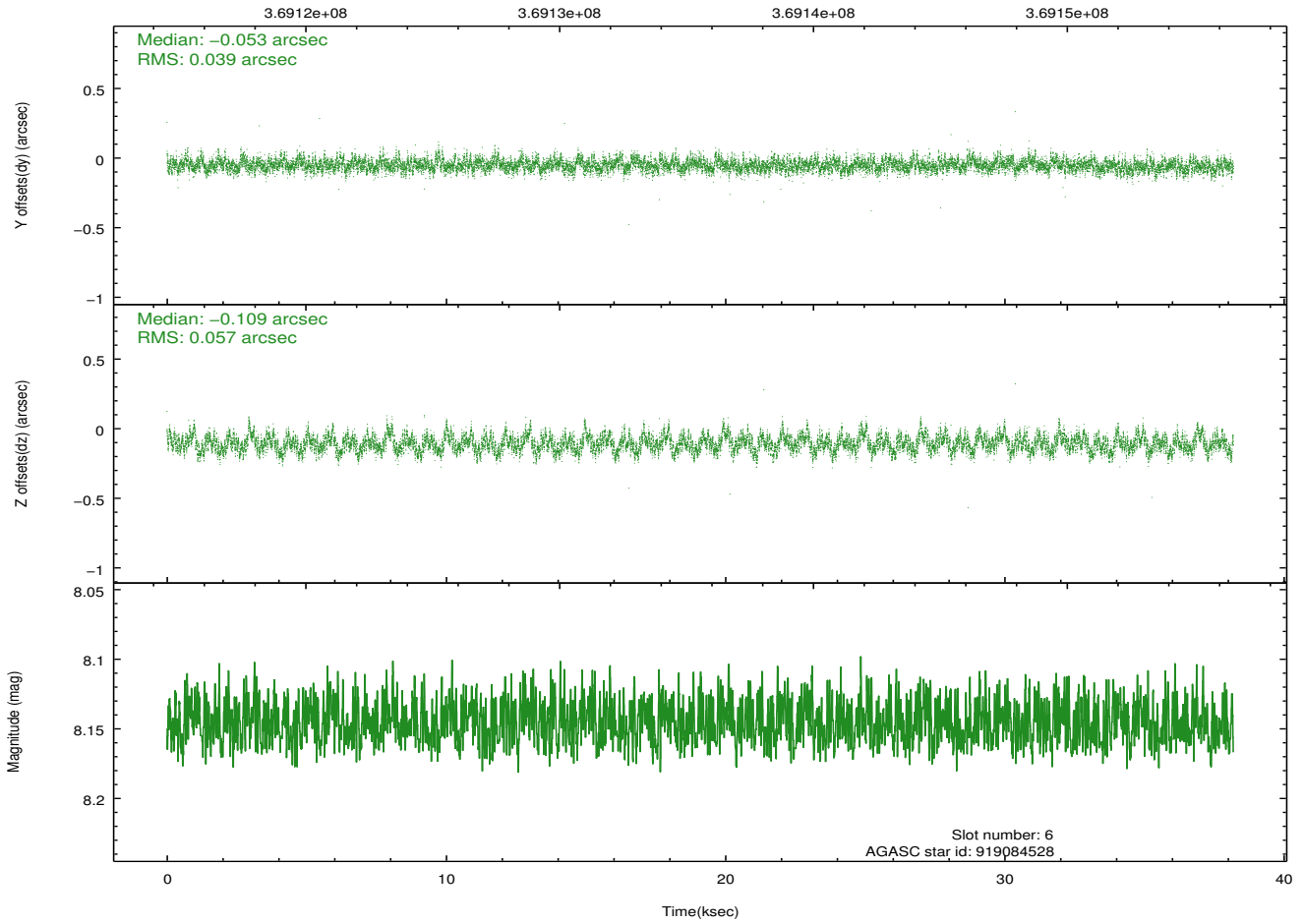
2.4.3 Slot 5



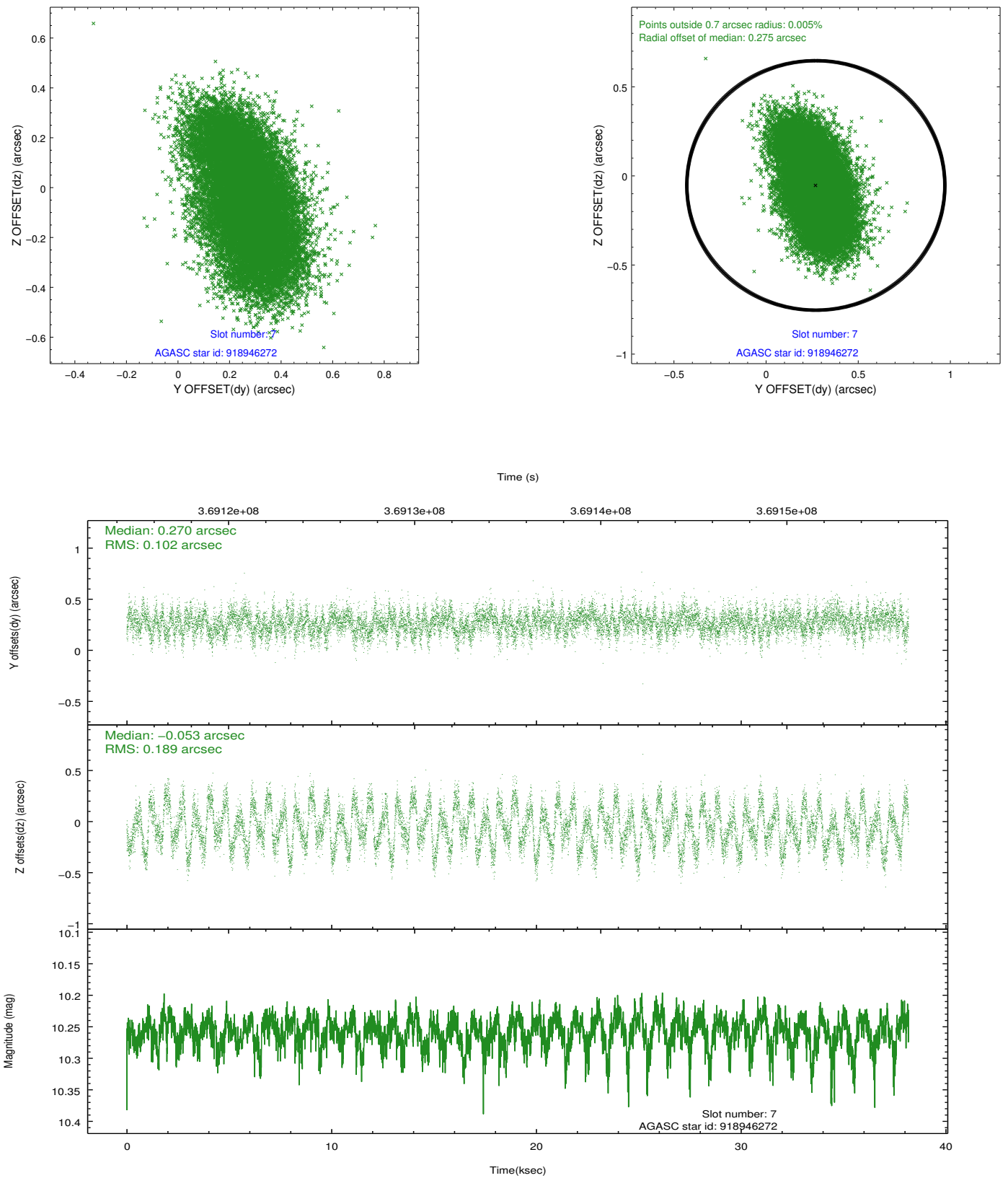
2.4.4 Slot 6



Time (s)

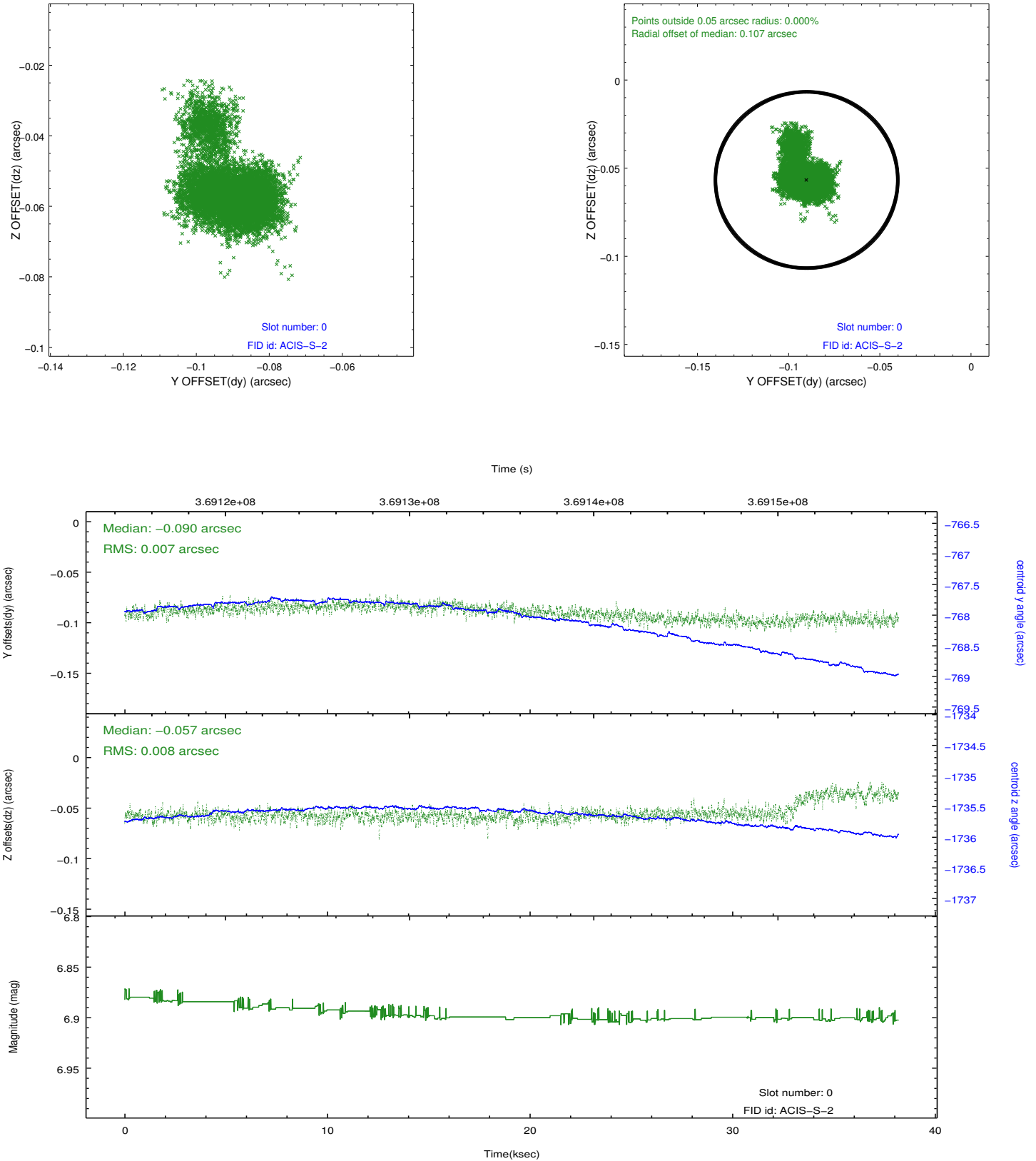


2.4.5 Slot 7

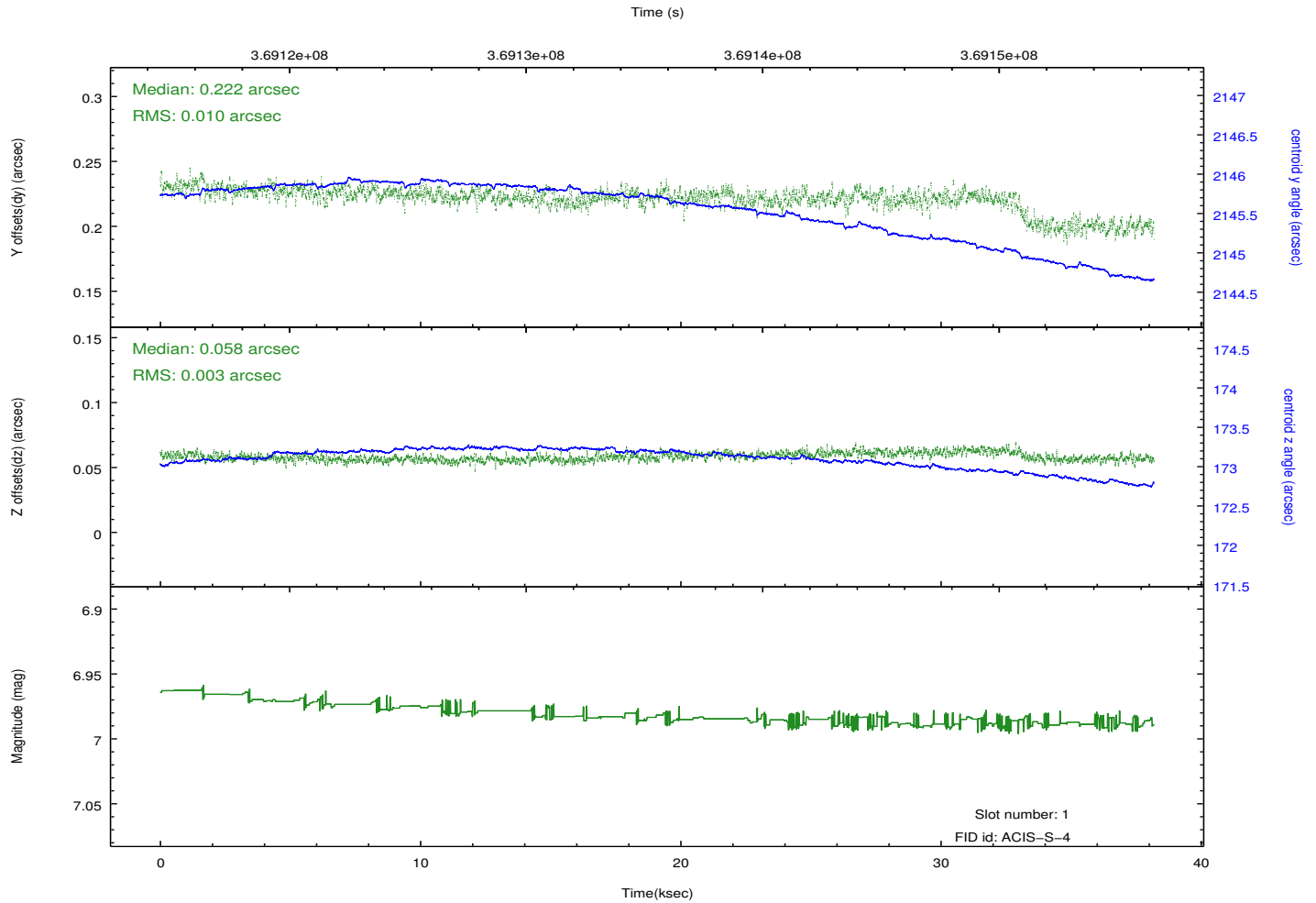
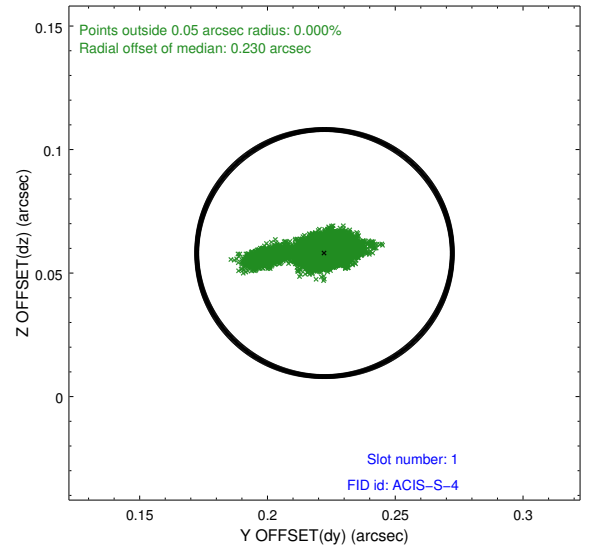
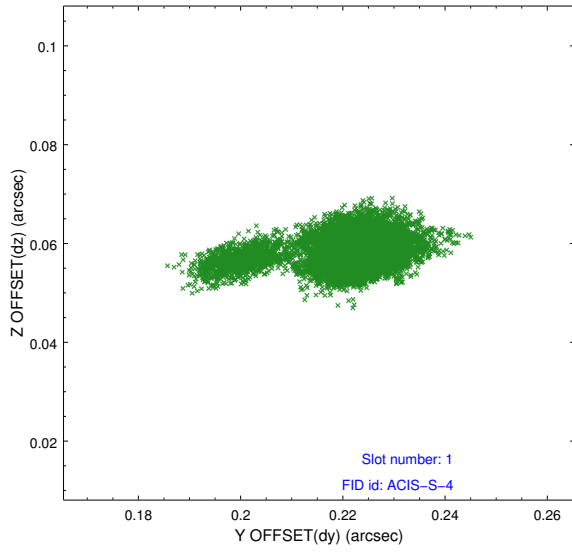


2.5 FID Slots

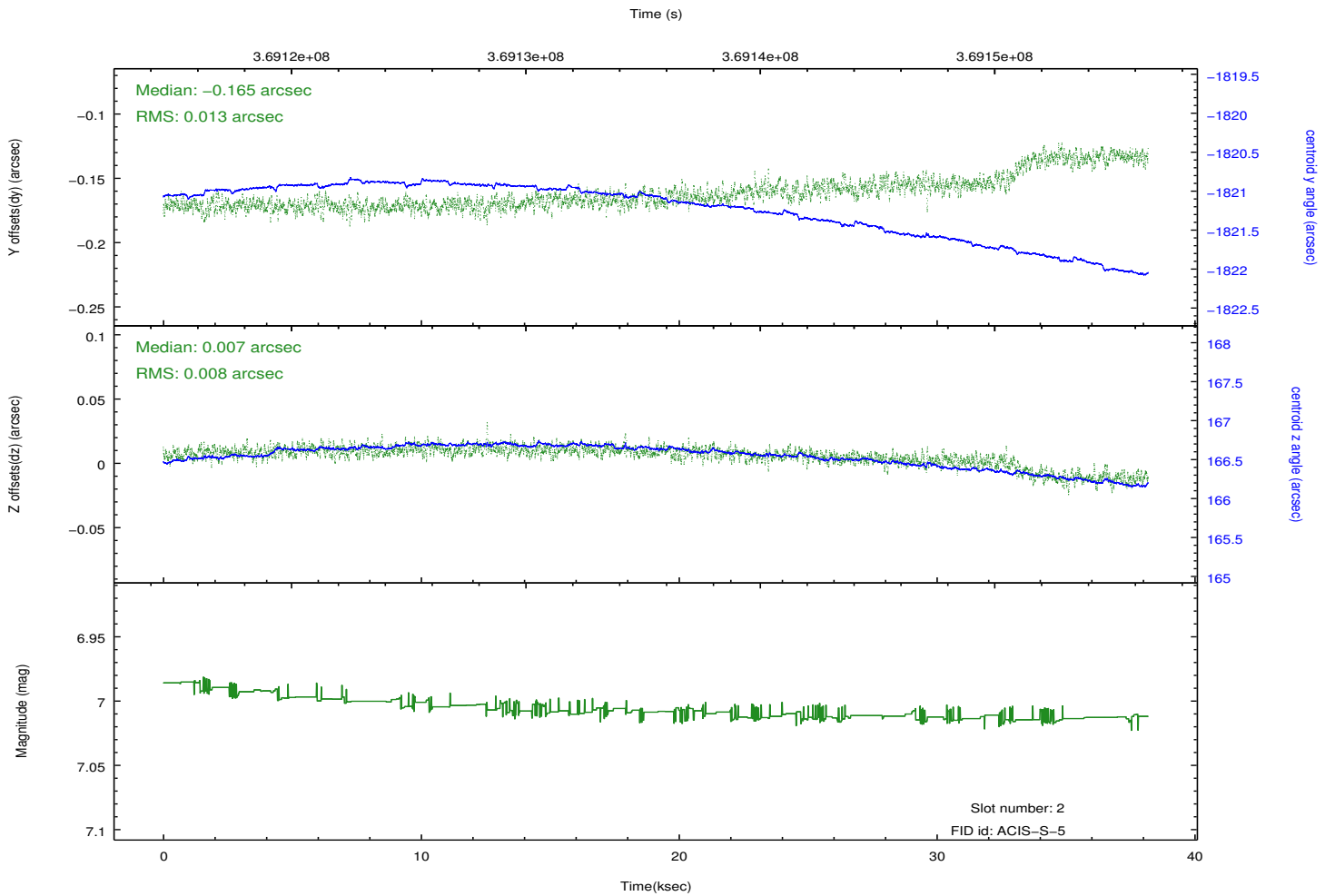
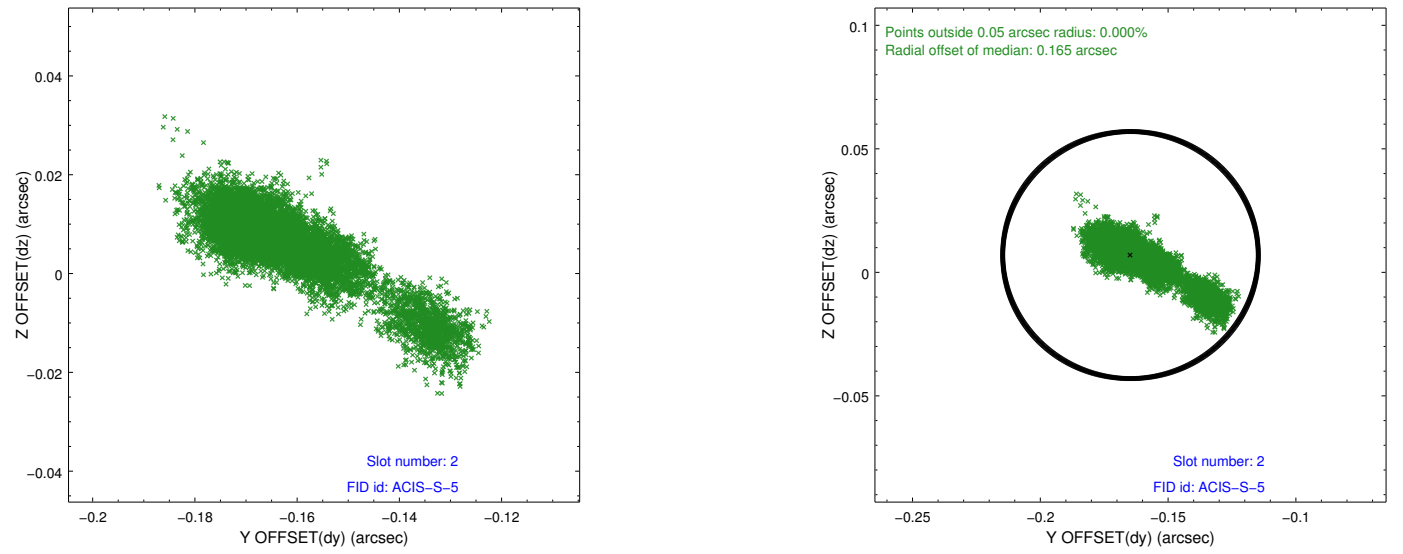
2.5.1 Slot 0



2.5.2 Slot 1



2.5.3 Slot 2



A Summary

A.1 Status

V&V Scientist	Jen Lauer
V&V Date (YYYY-MM-DD)	2012.06.17
V&V Edition	1
V&V Disposition and Status	OK
V&V Charge Time	37.772327473938

A.2 Comments