

# V&V Reference Report

## L2 ASCDS Version : 8.4.4

Observation 10727 - L2 Version 2  
Chandra X-Ray Center

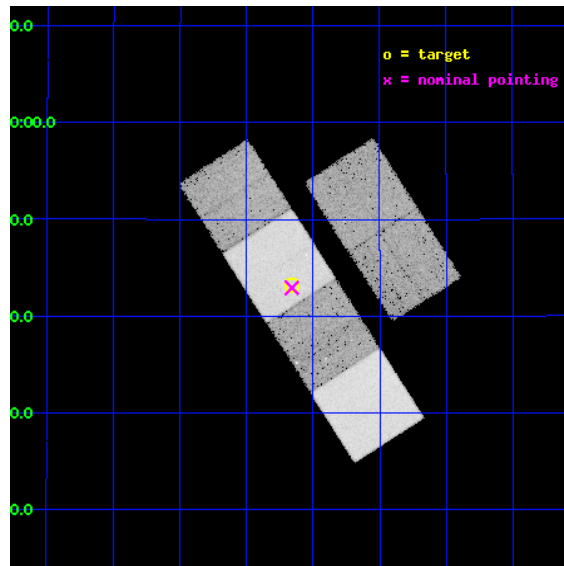
L2 Processing Date : Jun 2 2012

## Contents

<b>1</b>	<b>Front</b>	<b>2</b>
<b>2</b>	<b>OBI</b>	<b>3</b>
2.1	OBI . . . . .	3
2.1.1	Images . . . . .	3
2.1.2	Bias . . . . .	3
2.1.3	Parameters . . . . .	4
2.1.4	Events . . . . .	4
2.2	Compared Parameters . . . . .	5
2.3	Aspect . . . . .	6
2.4	Star Slots . . . . .	9
2.4.1	Slot 3 . . . . .	9
2.4.2	Slot 4 . . . . .	10
2.4.3	Slot 5 . . . . .	11
2.4.4	Slot 6 . . . . .	12
2.4.5	Slot 7 . . . . .	13
2.5	FID Slots . . . . .	14
2.5.1	Slot 0 . . . . .	14
2.5.2	Slot 1 . . . . .	15
2.5.3	Slot 2 . . . . .	16
<b>A</b>	<b>Summary</b>	<b>17</b>
A.1	Status . . . . .	17
A.2	Comments . . . . .	17

# 1 Front

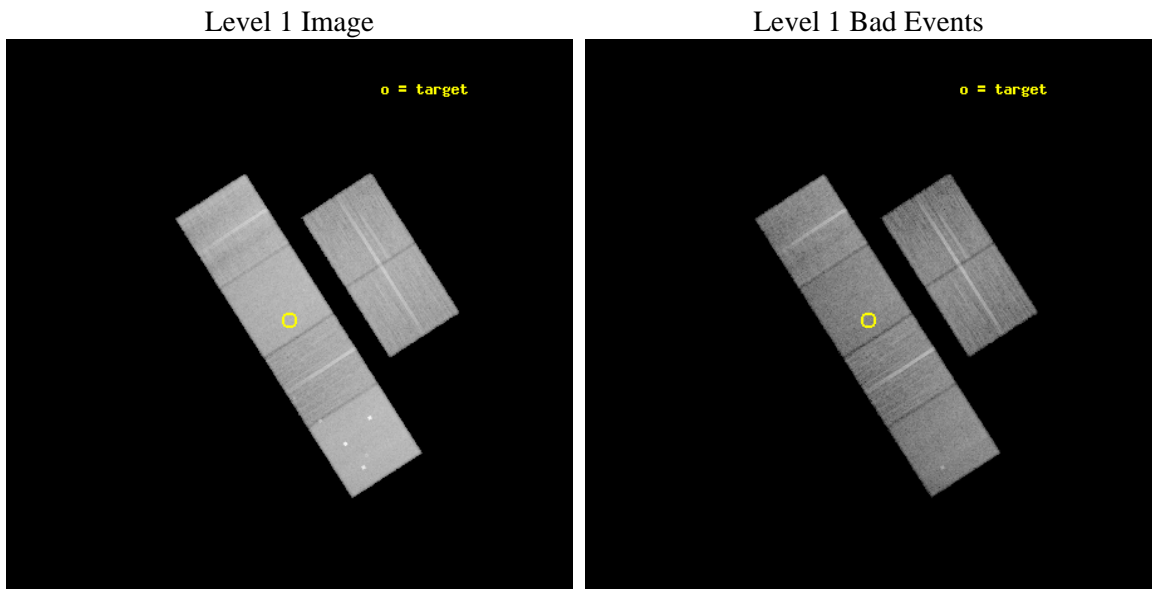
seq_num	701957	Sequence number
obs_id	10727	Observation id
title	Flaring galaxies with strong emission-line light echo	Proposal tit
observer	Dr. Peter Predehl	Principal investigator
object	SDSSJ095209.56+214313.3	Source name
dtycle	0	&#160
cycle	P	events from which exps? Prim/Second/Both
ra_targ	148.04	Observer's specified target RA [deg]
dec_targ	21.720361	Observer's specified target Dec [deg]
ra_nom	148.03990122641	Nominal RA [deg]
dec_nom	21.71548421271	Nominal Dec [deg]
roll_nom	237.34496601659	Nominal Roll [deg]
revision	2	Processing version of data
ontime	16949.815058887	Sum of GTIs [s]
lvertime	16735.186294658	Livetime [s]
ontime2	16949.85609889	Sum of GTIs [s]
ontime3	16949.691938877	Sum of GTIs [s]
ontime5	16949.774018884	Sum of GTIs [s]
ontime6	16949.73297888	Sum of GTIs [s]
ontime7	16949.815058887	Sum of GTIs [s]
ontime8	16949.650898874	Sum of GTIs [s]
l2events	291491	Number of level 2 events



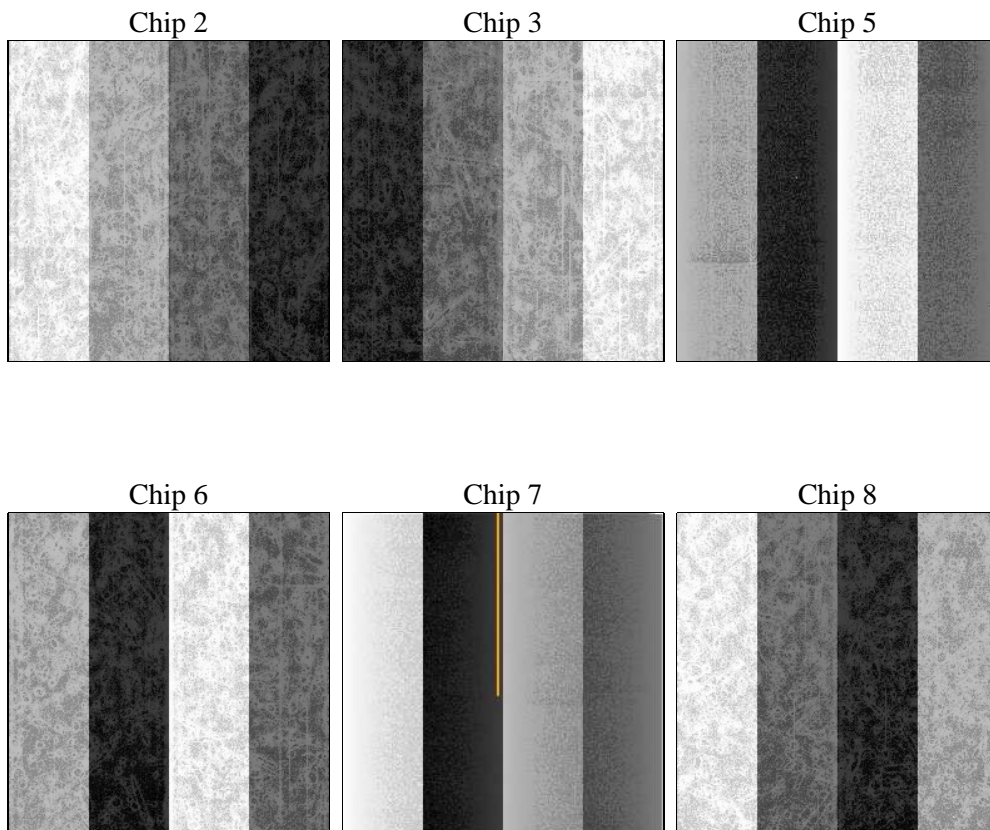
## 2 OBI

### 2.1 OBI

#### 2.1.1 Images



#### 2.1.2 Bias



### 2.1.3 Parameters

obi_num	0	Obi number	sched_exp_time	17000.000000	[s] Scheduled observation exposure time
ascdsver	8.4.4	Processing system revision	ontime	16949.815058887	Sum of GTIs [s]
caldbver	4.4.9	&#160	ontime2	16949.856098889	Sum of GTIs [s]
date	2012-06-02T15:08:27	Date and time of file creation	ontime3	16949.691938877	Sum of GTIs [s]
revision	2	Processing version of data	ontime5	16949.774018884	Sum of GTIs [s]
			ontime6	16949.73297888	Sum of GTIs [s]
			ontime7	16949.815058887	Sum of GTIs [s]
			ontime8	16949.650898874	Sum of GTIs [s]
			l1events	1268372	Number of level 1 events

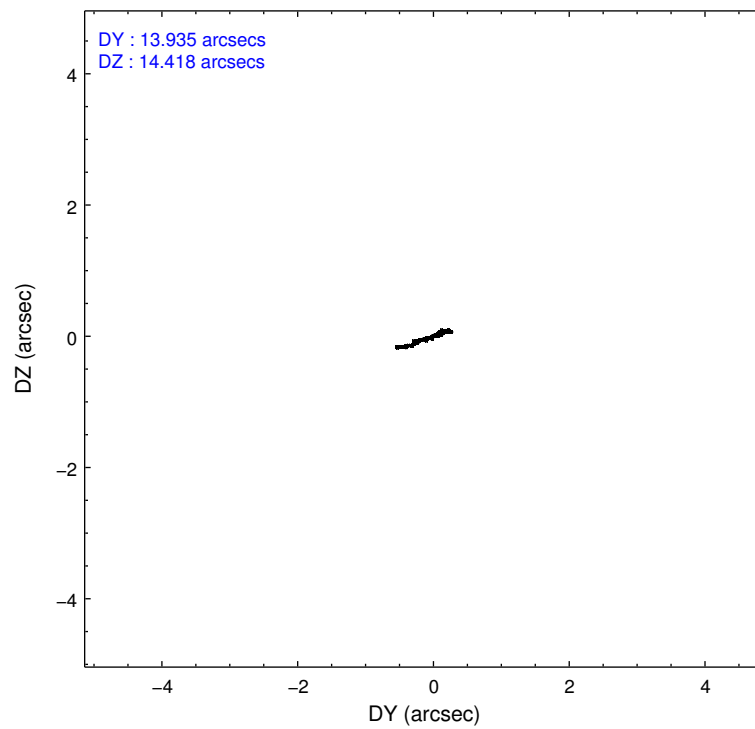
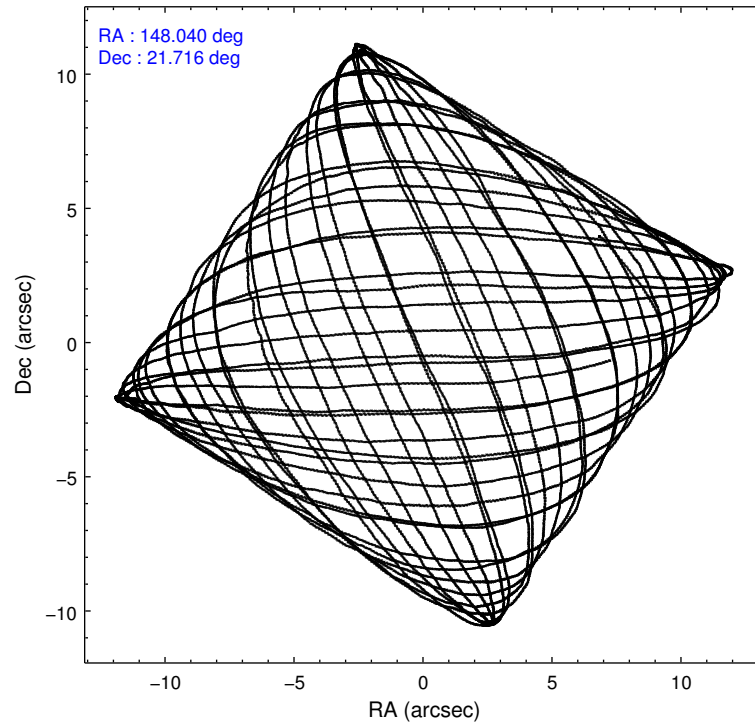
### 2.1.4 Events

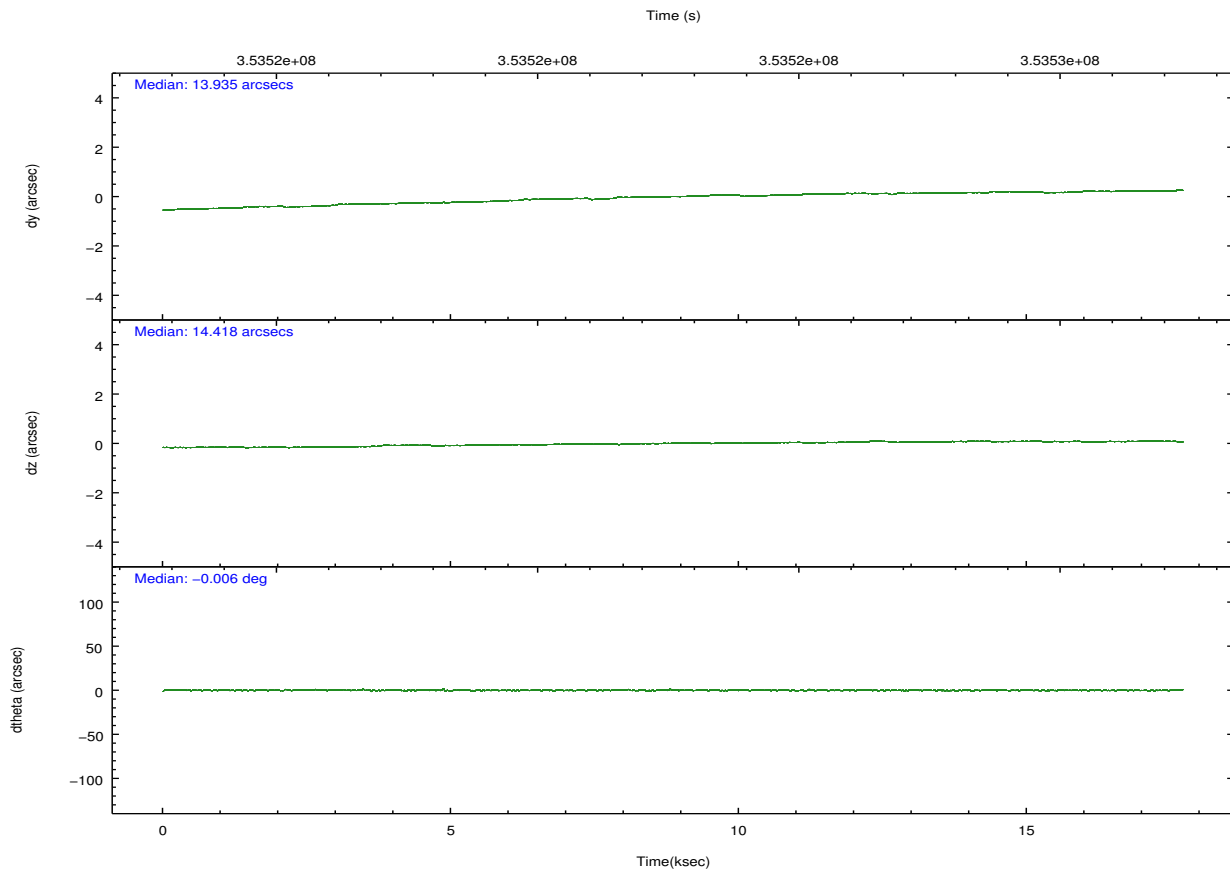
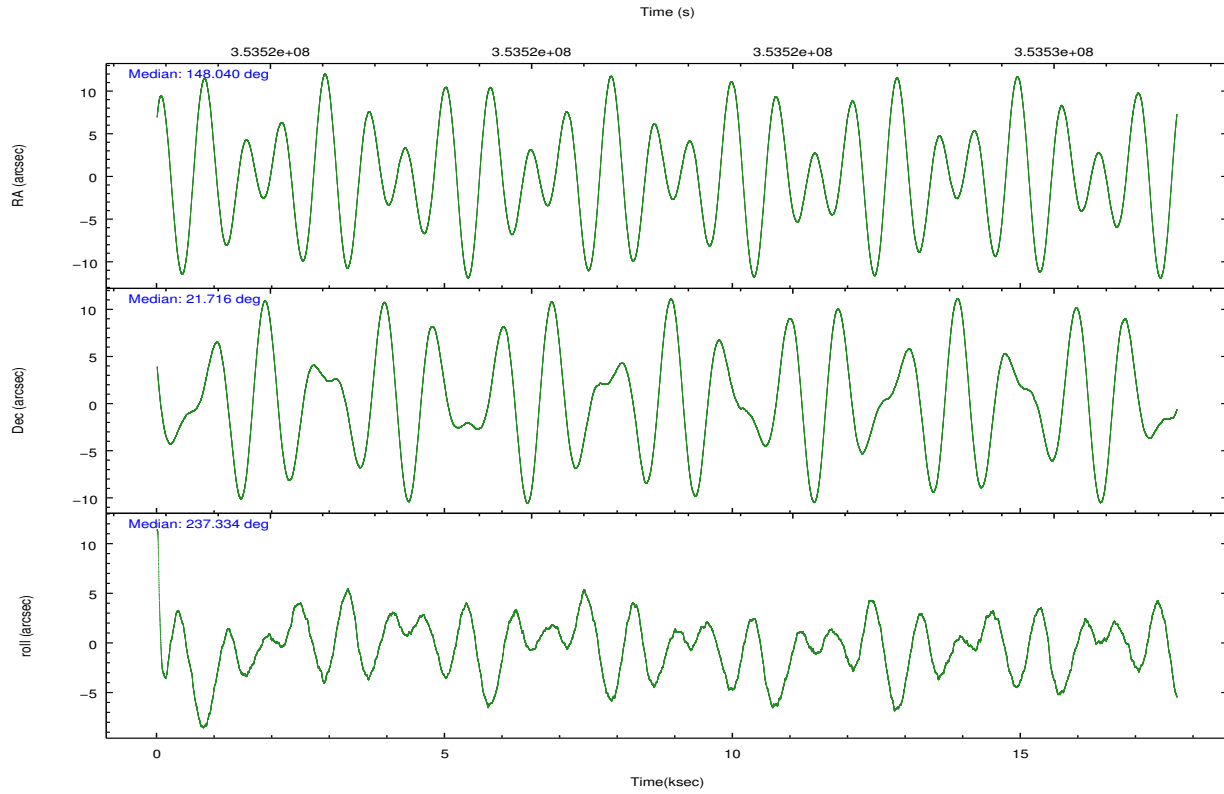
	ccd 2	ccd 3	ccd 5	ccd 6	ccd 7	ccd 8		ccd 2	ccd 3	ccd 5	ccd 6	ccd 7	ccd 8
level 1 events	177719	171936	277201	174324	243843	223349	grade 0 events	8554	8995	15457	8406	8326	16208
rejected events	157252	151142	146963	152867	143483	172150		4%	5%	5%	4%	3%	7%
rejected %	88%	87%	53%	87%	58%	77%	grade 1 events	124	105	417	116	265	180
								0%	0%	0%	0%	0%	0%
							grade 2 events	4526	4211	39635	4774	20613	11822
								2%	2%	14%	2%	8%	5%
							grade 3 events	1930	1943	4404	1940	8310	5332
								1%	1%	1%	1%	3%	2%
							grade 4 events	1904	1890	4524	1958	8393	4977
								1%	1%	1%	1%	3%	2%
							grade 5 events	7435	8205	19237	8570	22922	11281
								4%	4%	6%	4%	9%	5%
							grade 6 events	3554	3756	66241	4382	54737	12860
								1%	2%	23%	2%	22%	5%
							grade 7 events	149692	142831	127286	144178	120277	160689
								84%	83%	45%	82%	49%	71%

## 2.2 Compared Parameters

Parameter	Planned	Actual	Parameter	Planned	Actual
Instrument	ACIS	ACIS	Obspar format version number	7	7
Detector	ACIS-235678	ACIS-235678	Obspar file type	PREDICTED	ACTUAL
Grating	NONE	NONE	Obspar update status	NONE	UPDATED
Data mode	FAINT	FAINT	CCD I0 on	N	N
Observation mode	POINTING	POINTING	CCD I1 on	N	N
[deg] Pointing RA	148.040873	148.0399012264066	CCD I2 on	O2	Y
[deg] Pointing Dec	21.742835	21.71548421270952	CCD I3 on	O3	Y
[deg] Pointing Roll	237.187972	237.3449660165925	CCD S0 on	N	N
[mm] SIM focus pos	-0.684267	-0.6828225247311905	CCD S1 on	O1	Y
[mm] SIM defocus	0	0.001444936568705701	CCD S2 on	O4	Y
[mm] SIM translation stage pos	-190.132523	-190.1400660498719	CCD S3 on	Y	Y
[mm] SIM translation stage offset	0	0.00754346686406393	CCD S4 on	O5	Y
[s] Observation start time (MET)	353514450.184000	353513224.52531	CCD S5 on	N	N
Observation start date	2009-03-15T14:26:24	2009-03-15T14:07:04	Number of optional ACIS chips dropped	0	0
[s] Observation end time (MET)	353531450.184000	353532360.25126	On-chip summing requested	N	N
Observation end date	2009-03-15T19:09:44	2009-03-15T19:26:00	Subarray requested	NONE	NONE
Read mode	TIMED	TIMED	Alternating exposures requested	N	N
			[s] Primary exposure time	0.000000	3.2

## 2.3 Aspect



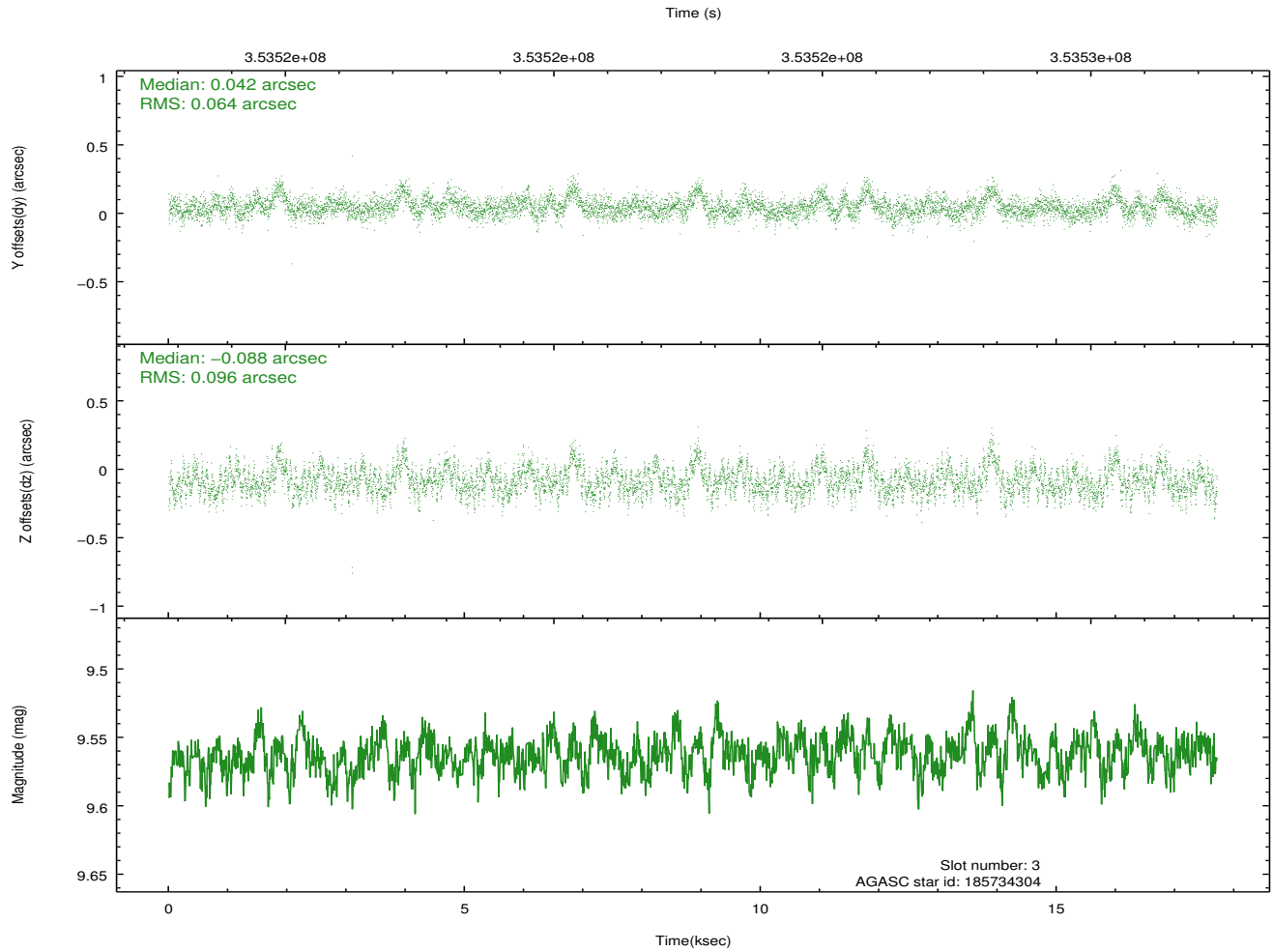
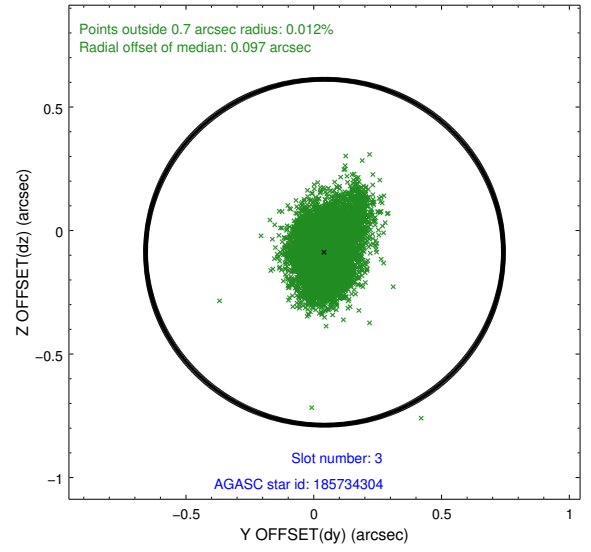
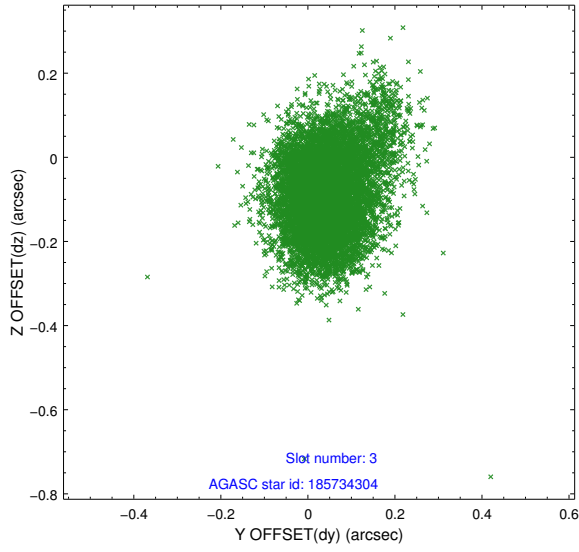


### Slot Statistics

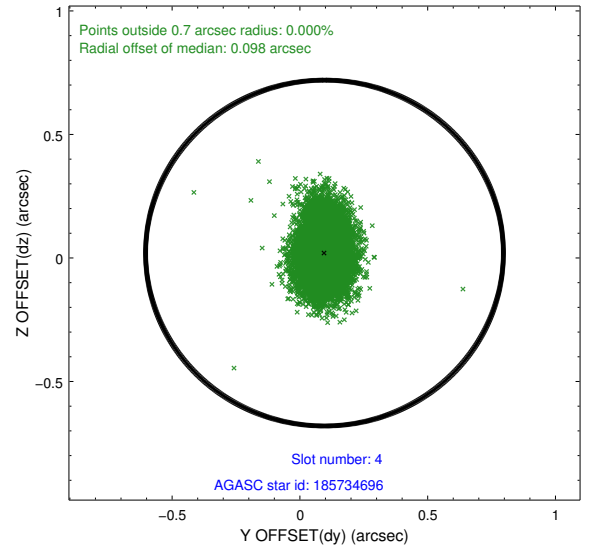
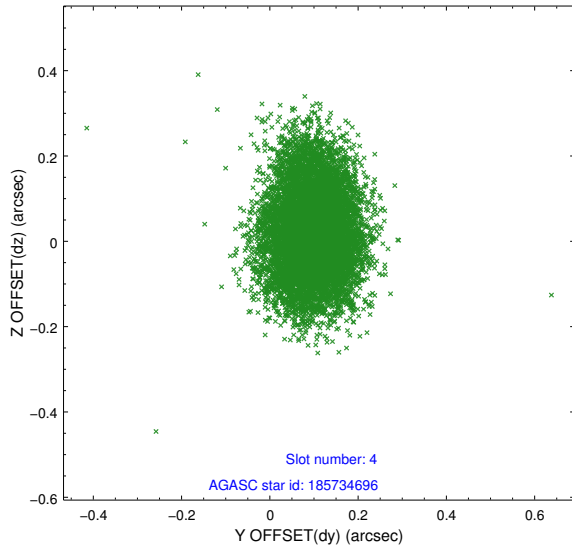
slot	status	id	mag	n_pts	med_dy	med_dz	dr1	dr2	ra	dec	mean_y	mean_z
0	FID	ACIS-S-1	7.03	4320	0.039	-0.018	0.010	0.015	0.000000	0.000000	929.27	-1731.41
1	FID	ACIS-S-4	7.03	4320	0.155	-0.001	0.013	0.026	0.000000	0.000000	2146.90	172.54
2	FID	ACIS-S-5	7.06	4317	-0.219	0.032	0.008	0.017	0.000000	0.000000	-1819.58	166.40
3	GUIDE	185734304	9.56	8623	0.042	-0.088	0.118	0.206	147.715865	22.199116	-793.79	-1800.75
4	GUIDE	185734696	9.41	8635	0.096	0.020	0.116	0.195	147.590211	22.131057	-361.55	-2021.52
5	GUIDE	185734736	7.14	8640	-0.203	0.074	0.059	0.093	148.268421	22.123316	-1562.96	-104.86
6	GUIDE	185735080	9.24	8631	-0.015	0.001	0.102	0.169	147.474948	21.951535	390.95	-1995.46
7	GUIDE	185740088	9.63	8625	0.077	-0.013	0.129	0.215	148.610598	21.452588	-159.07	2168.41

## 2.4 Star Slots

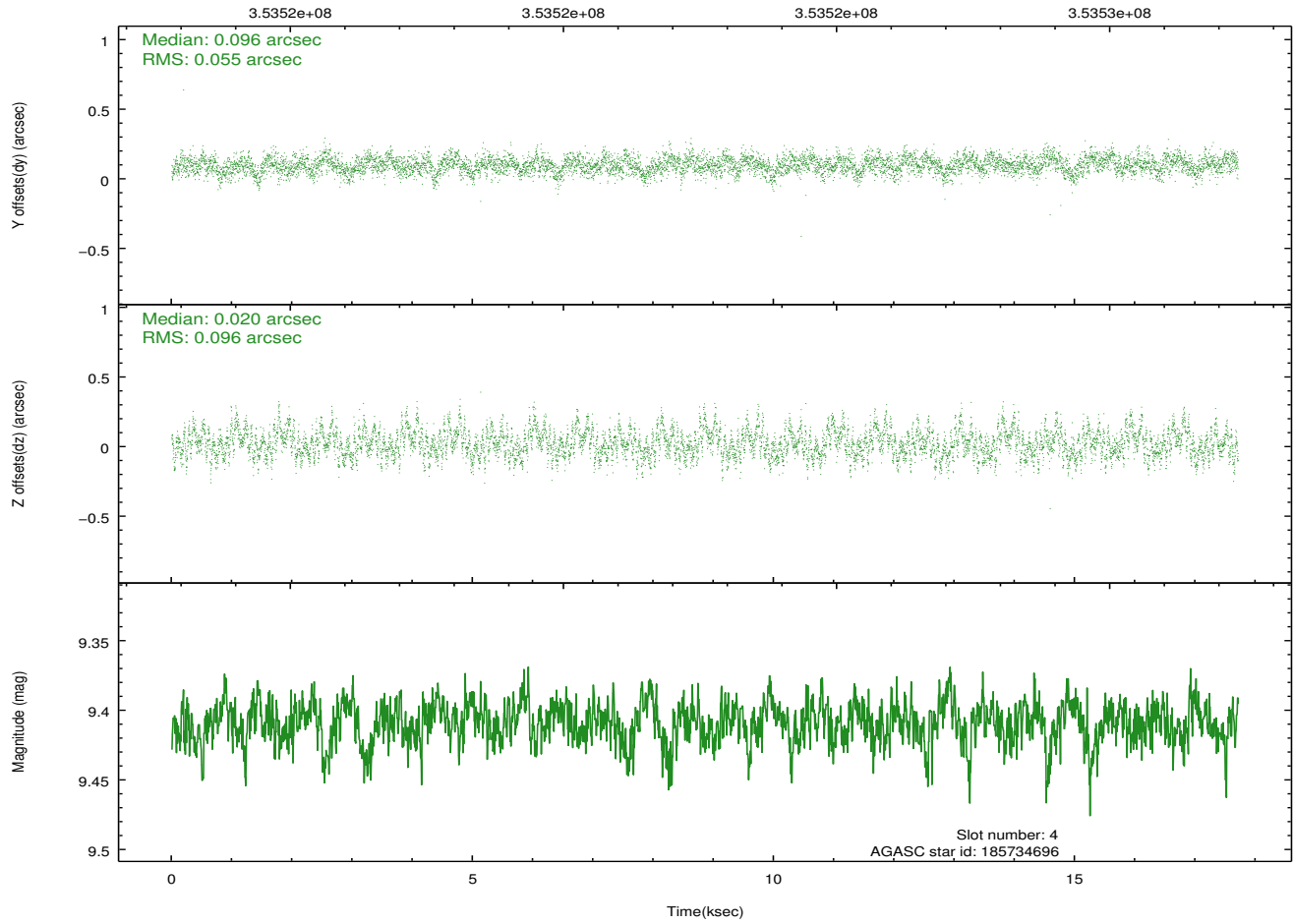
### 2.4.1 Slot 3



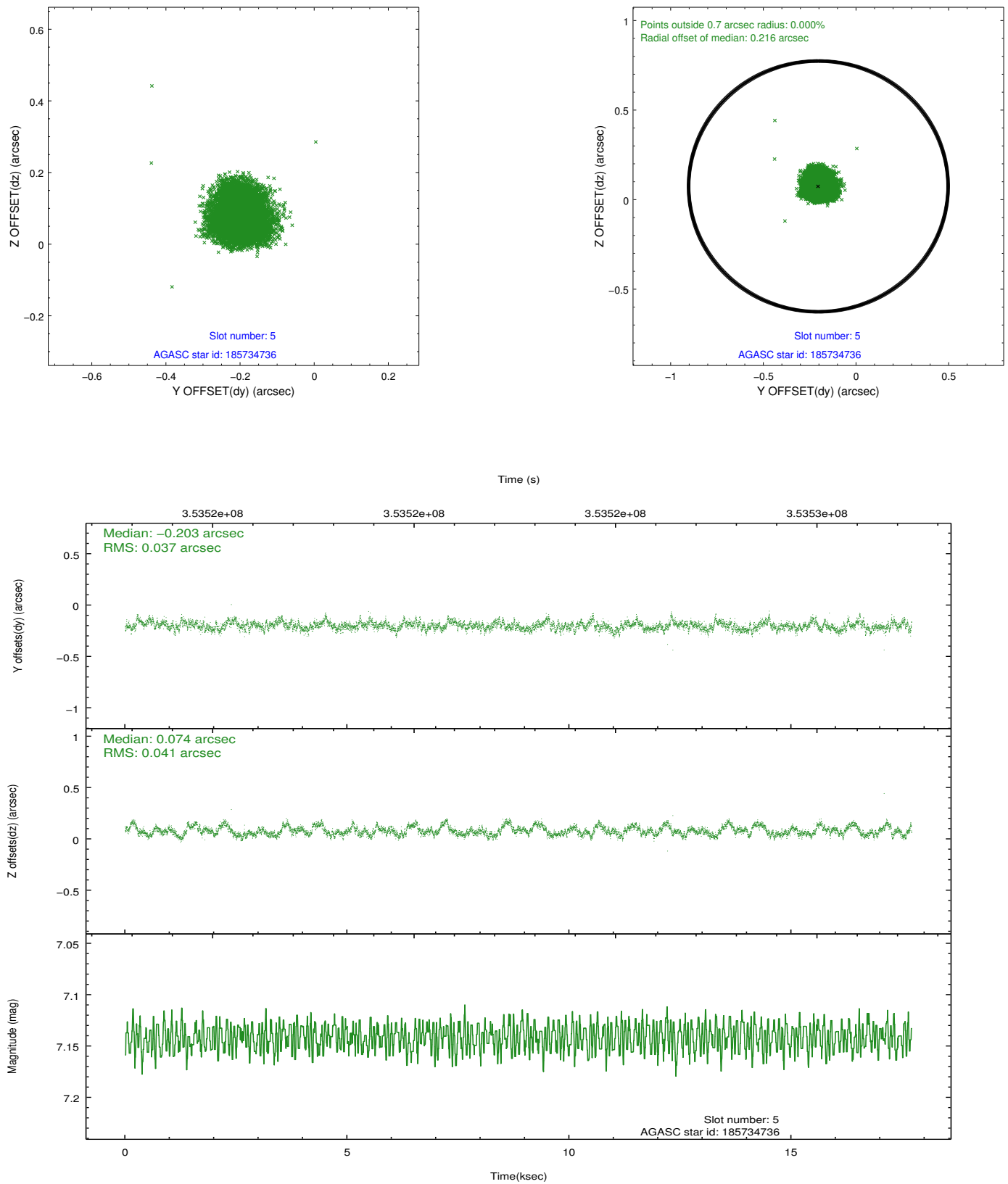
## 2.4.2 Slot 4



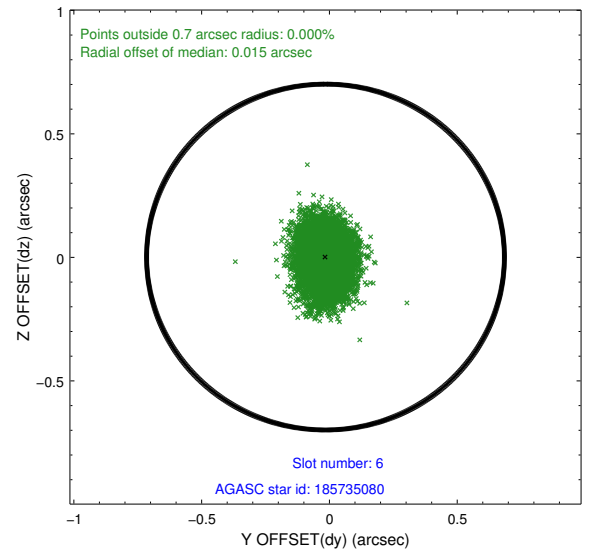
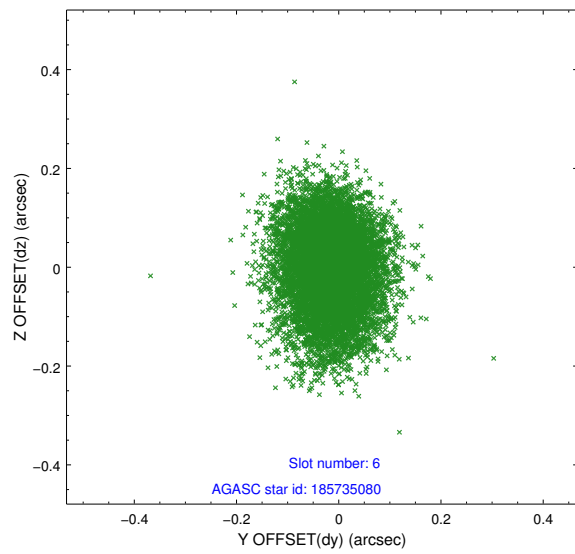
Time (s)



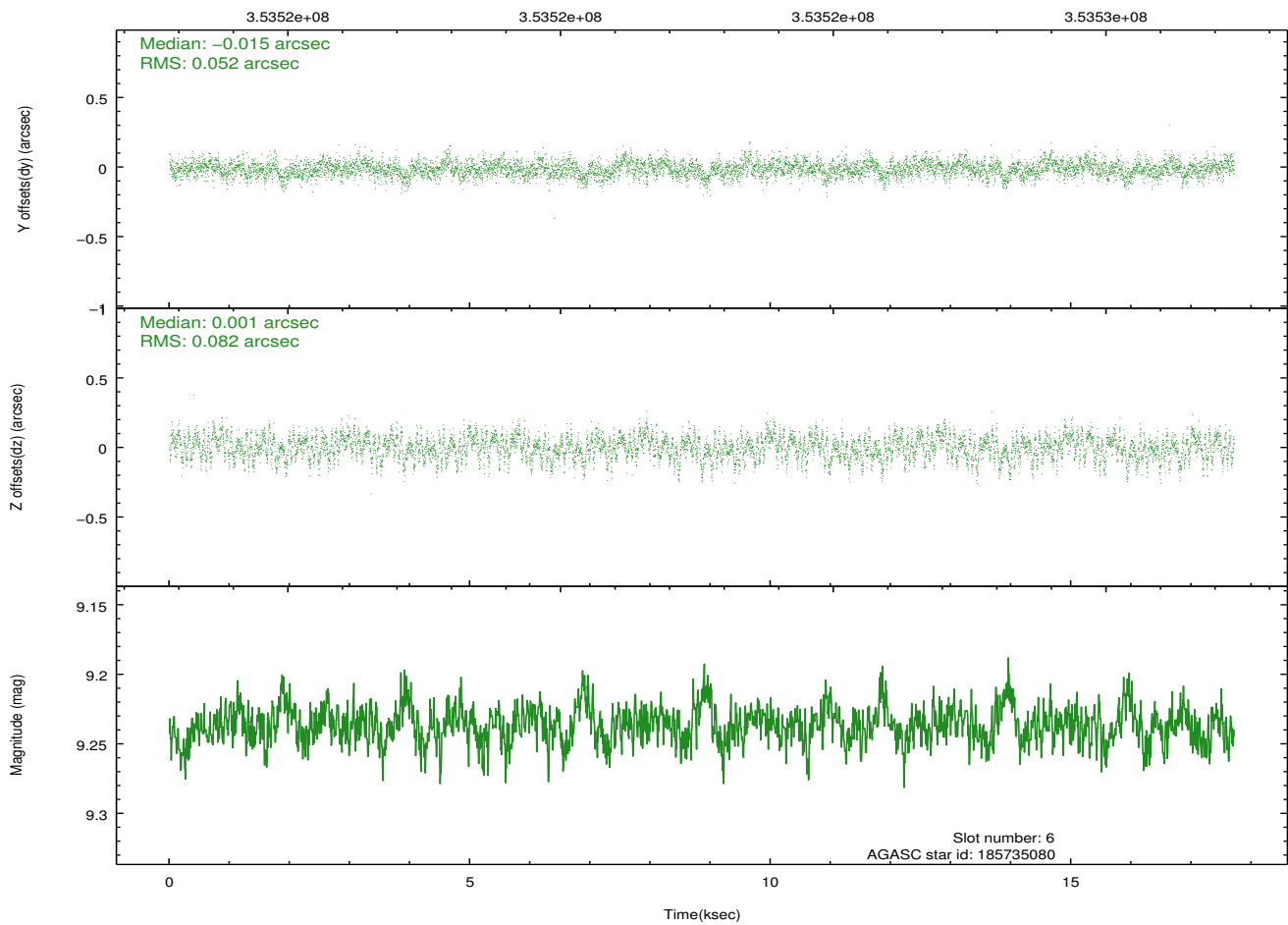
### 2.4.3 Slot 5



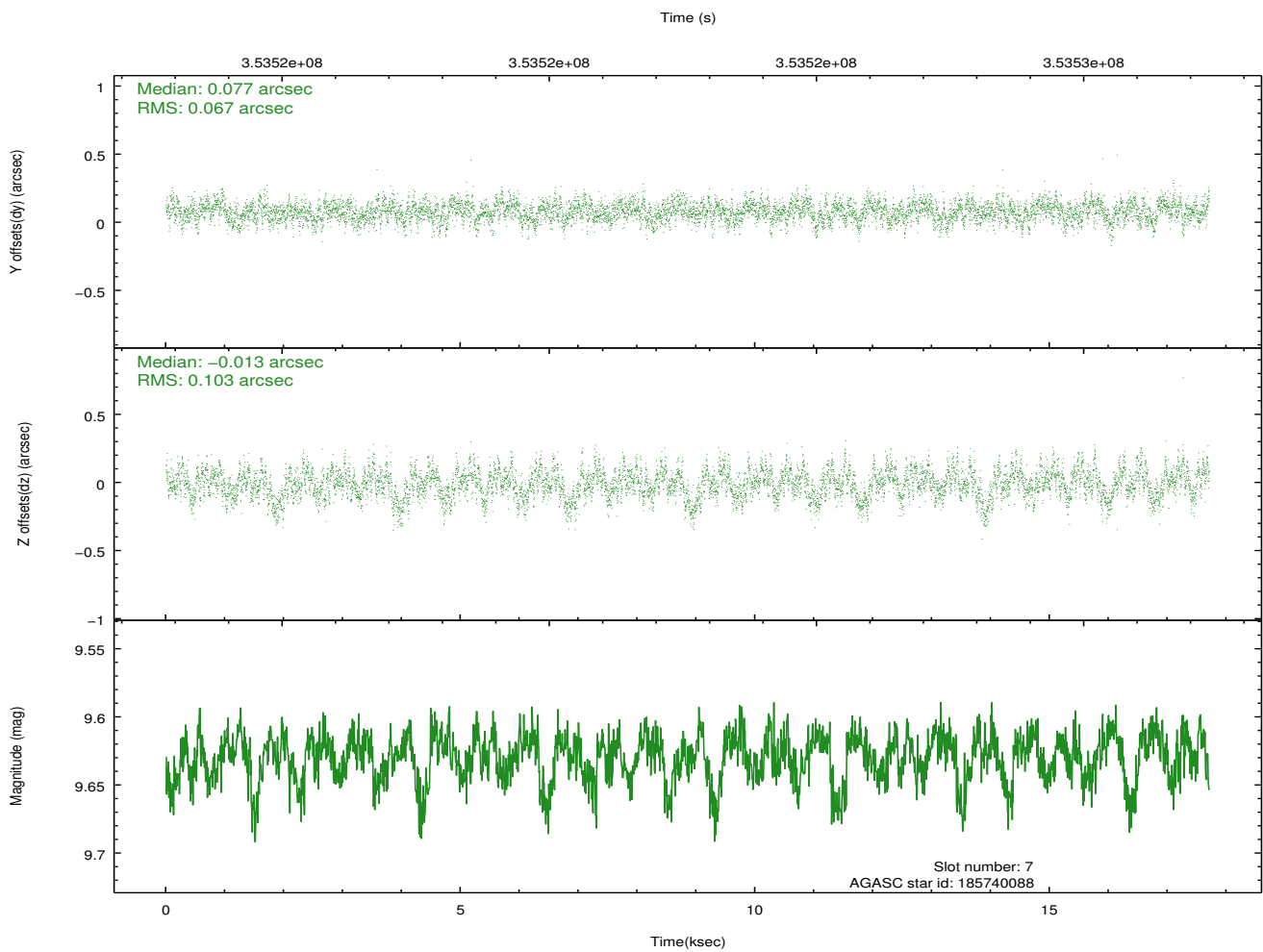
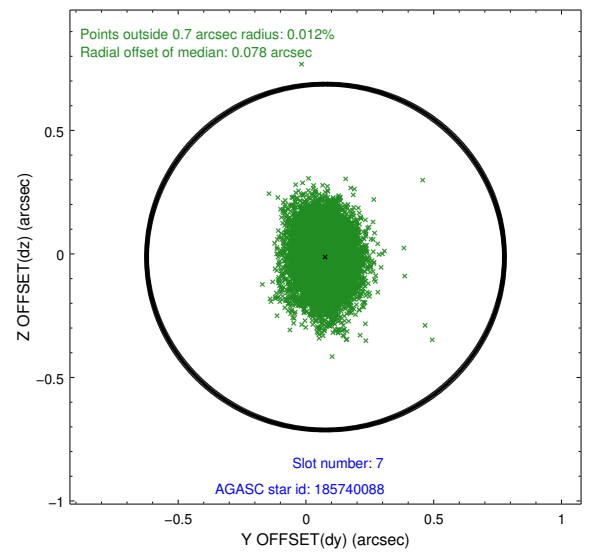
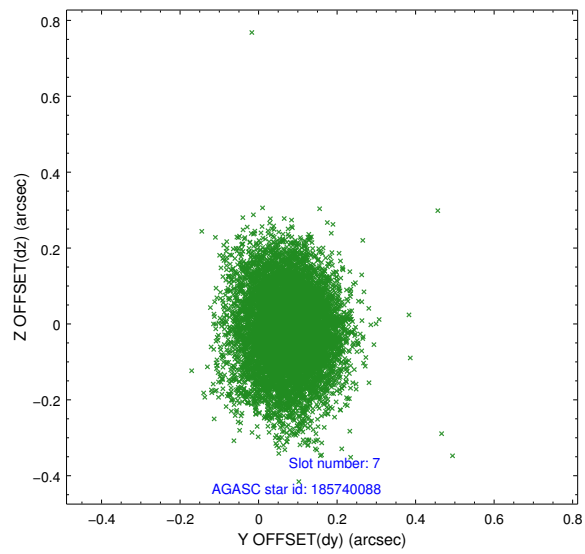
## 2.4.4 Slot 6



Time (s)

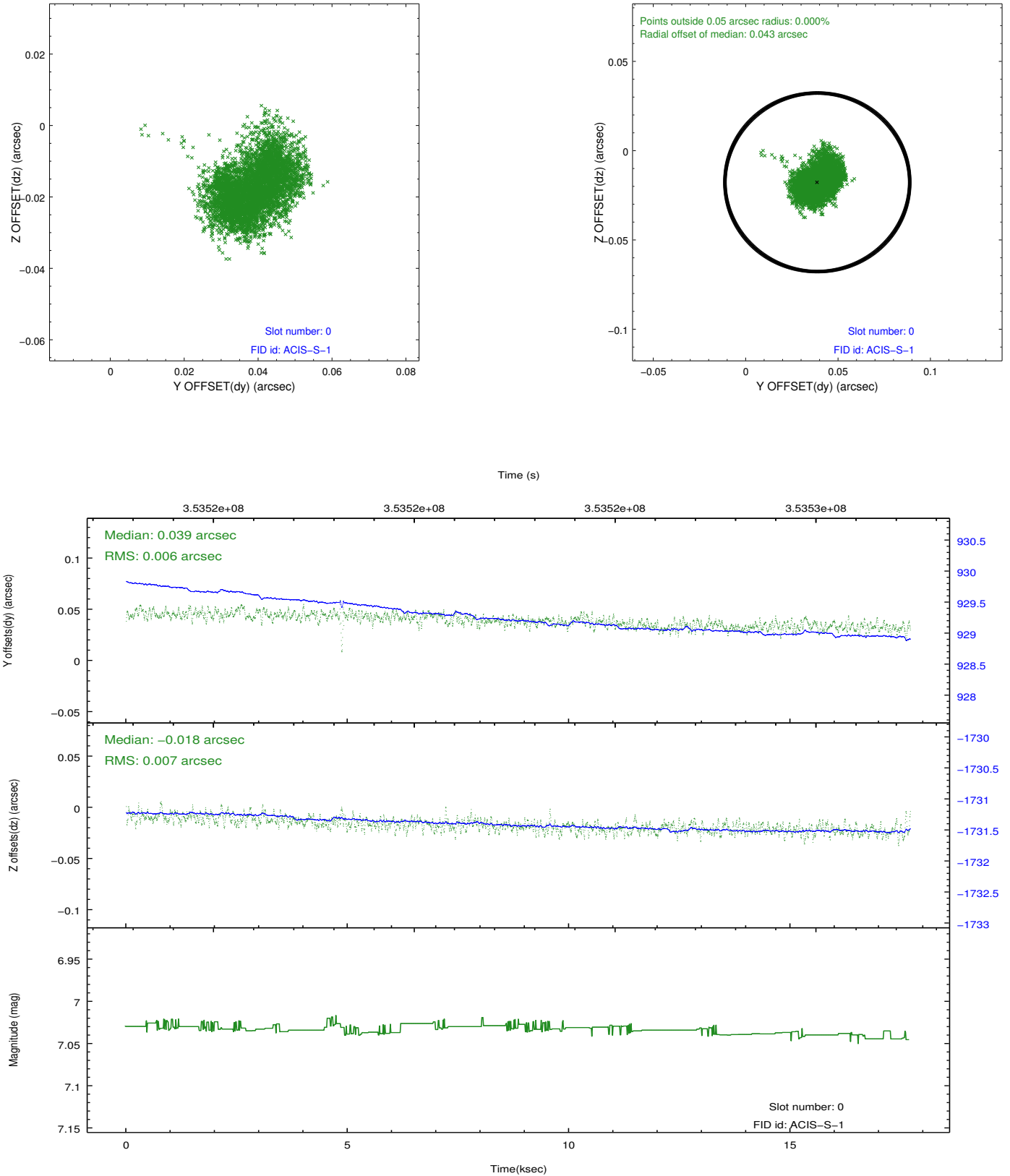


## 2.4.5 Slot 7

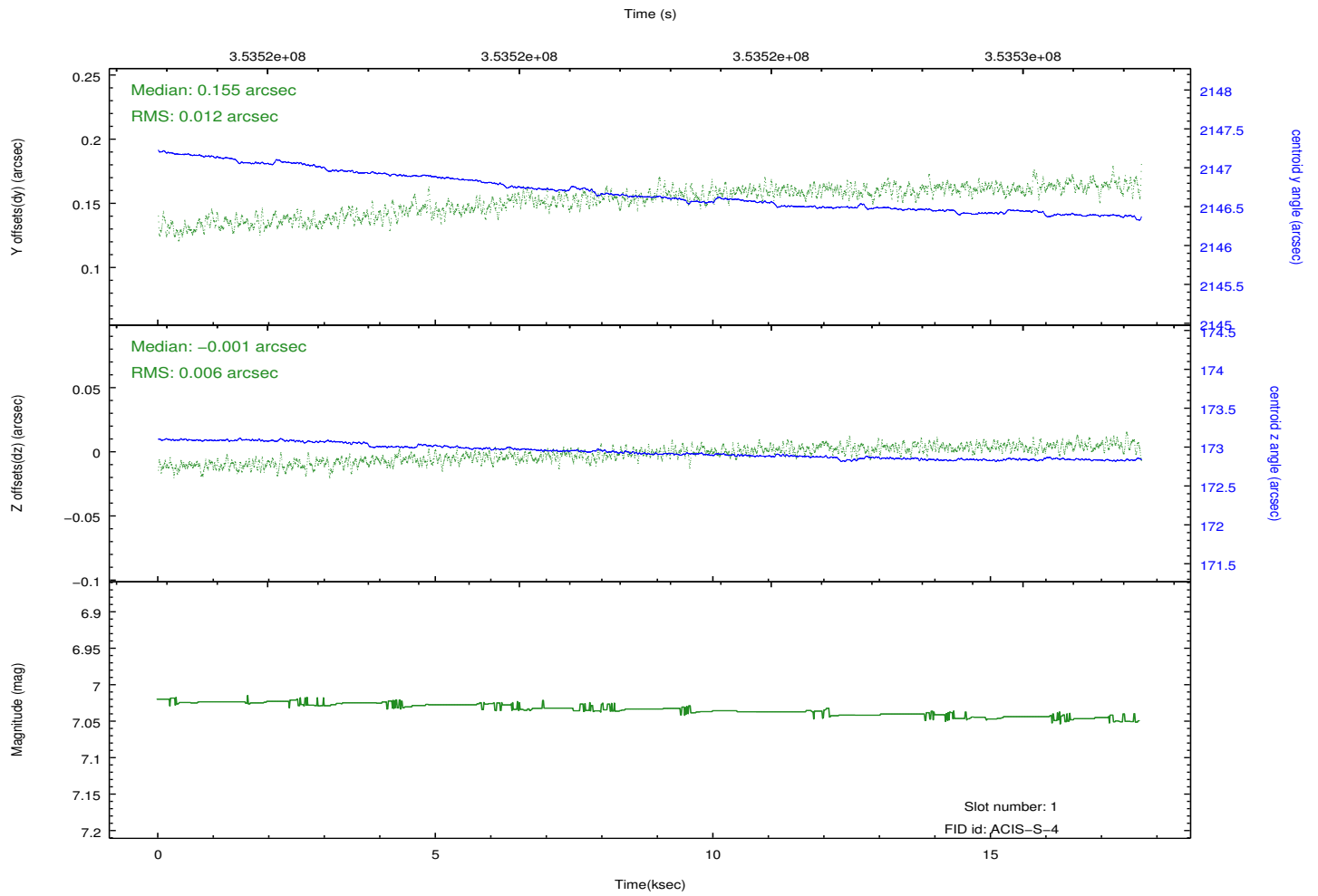
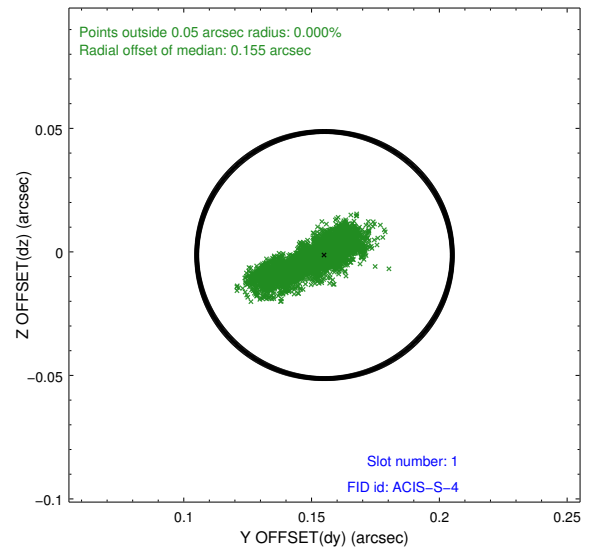
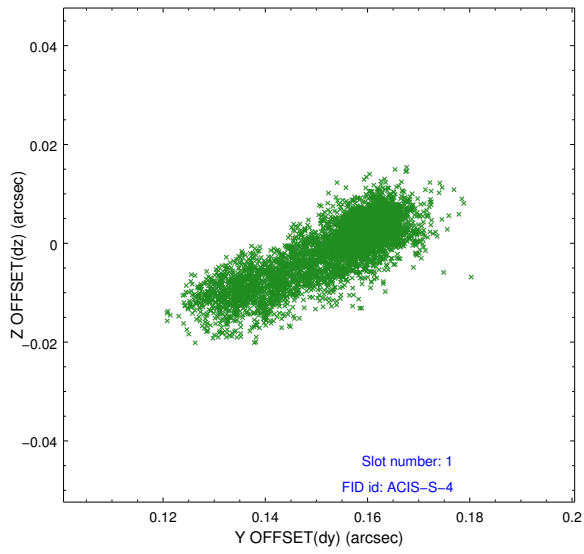


## 2.5 FID Slots

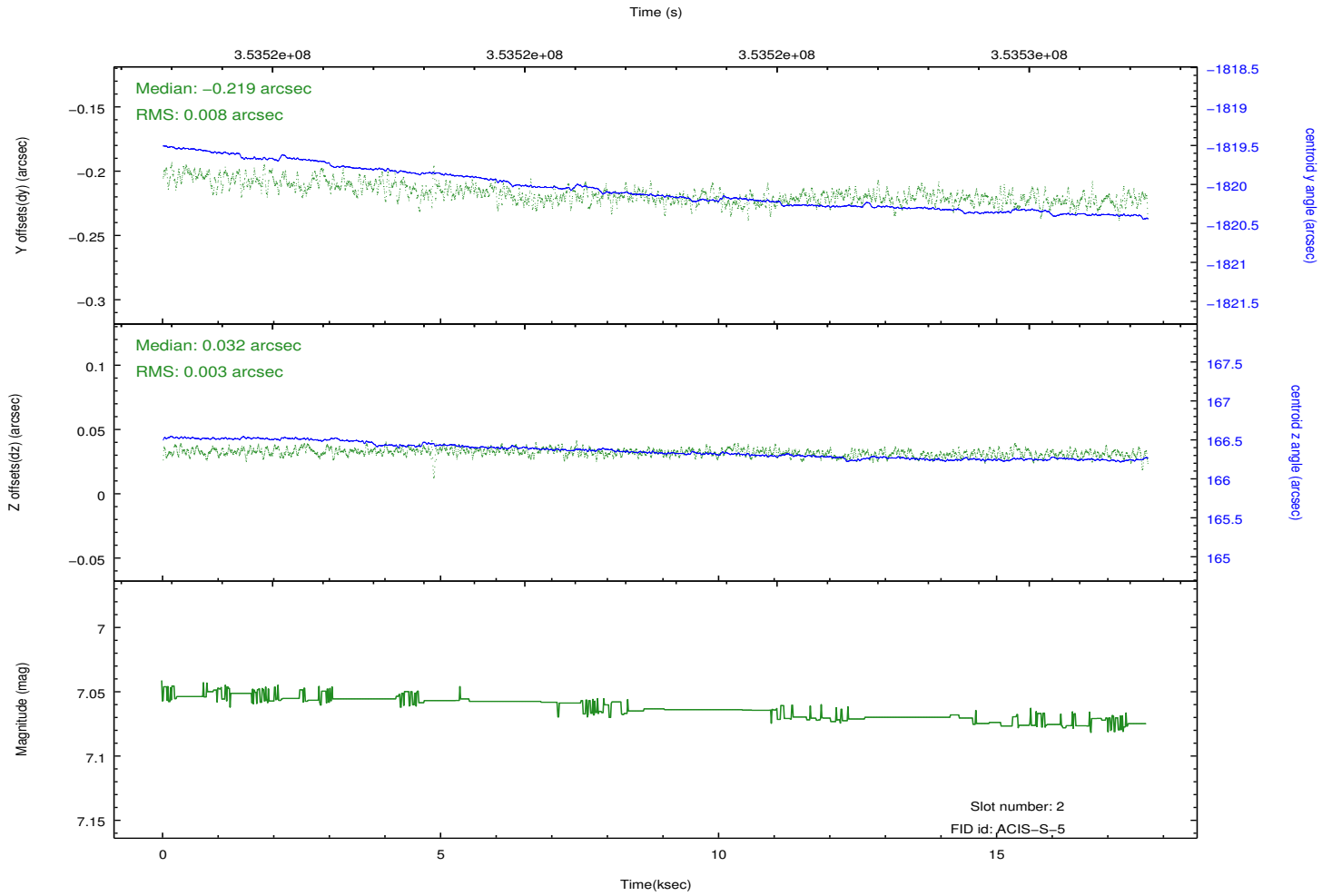
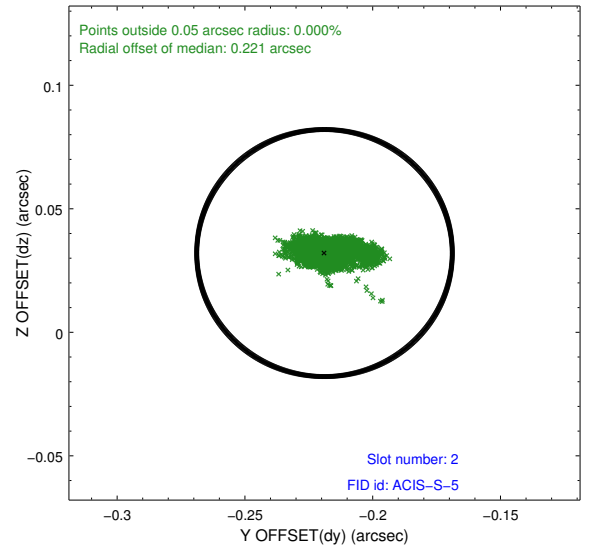
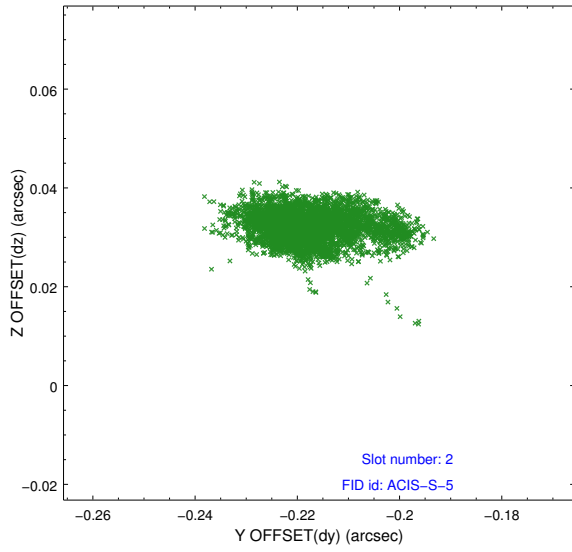
### 2.5.1 Slot 0



## 2.5.2 Slot 1



### 2.5.3 Slot 2



# A Summary

## A.1 Status

V&V Scientist	Joy Nichols
V&V Date (YYYY-MM-DD)	2012.06.07
V&V Edition	1
V&V Disposition and Status	OK
V&V Charge Time	16.9503999

## A.2 Comments