

V&V Reference Report

L2 ASCDS Version : 8.4.5

Observation 10747 - L2 Version 2
Chandra X-Ray Center

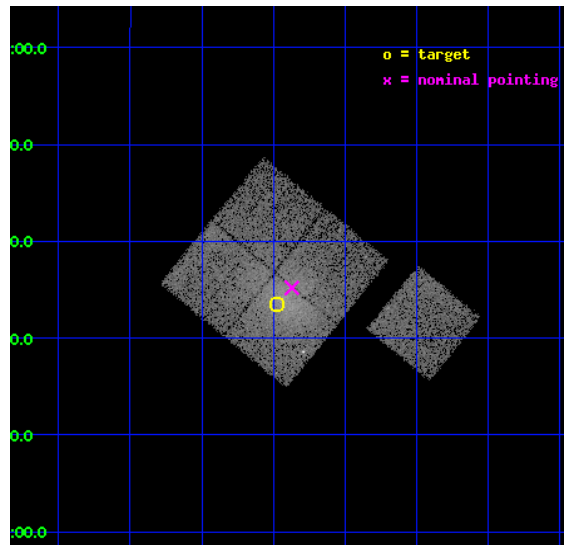
L2 Processing Date : Jun 9 2012

Contents

1	Front	2
2	OBI	3
2.1	OBI	3
2.1.1	Images	3
2.1.2	Bias	3
2.1.3	Parameters	4
2.1.4	Events	4
2.2	Compared Parameters	5
2.3	Aspect	6
2.4	Star Slots	9
2.4.1	Slot 3	9
2.4.2	Slot 4	10
2.4.3	Slot 5	11
2.4.4	Slot 6	12
2.4.5	Slot 7	13
2.5	FID Slots	14
2.5.1	Slot 0	14
2.5.2	Slot 1	15
2.5.3	Slot 2	16
A	Summary	17
A.1	Status	17
A.2	Comments	17

1 Front

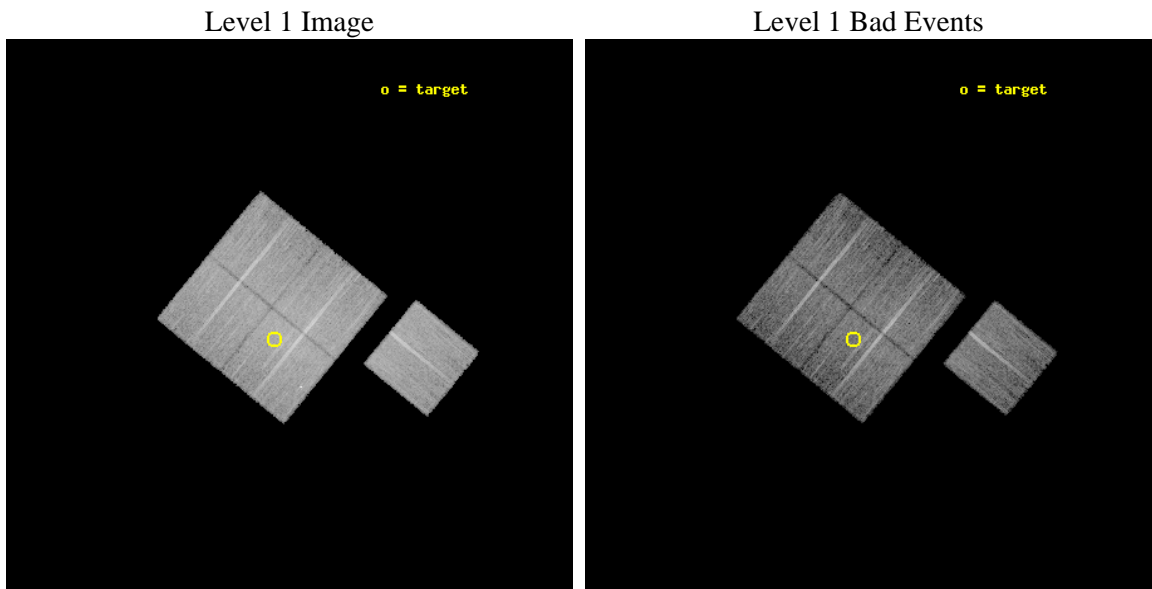
seq_num	800848	Sequence number
obs_id	10747	Observation id
title	Chandra observations of flux-limited sample of low-redshift galaxy clusters	Proposal title
observer	Dr. Stephen Murray	Principal investigator
object	IC1365	Source name
dtycle	0	
cycle	P	events from which exps? Prim/Second/Both
ra_targ	318.493333	Observer's specified target RA [deg]
dec_targ	2.558889	Observer's specified target Dec [deg]
ra_nom	318.46759434909	Nominal RA [deg]
dec_nom	2.5866133703332	Nominal Dec [deg]
roll_nom	129.27028038444	Nominal Roll [deg]
revision	2	Processing version of data
ontime	10140.100077987	Sum of GTIs [s]
livetime	10007.612205435	Livetime [s]
ontime0	10140.100077987	Sum of GTIs [s]
ontime1	10140.100077987	Sum of GTIs [s]
ontime2	10140.100077987	Sum of GTIs [s]
ontime3	10140.100077987	Sum of GTIs [s]
ontime6	10140.100077987	Sum of GTIs [s]
l2events	54050	Number of level 2 events



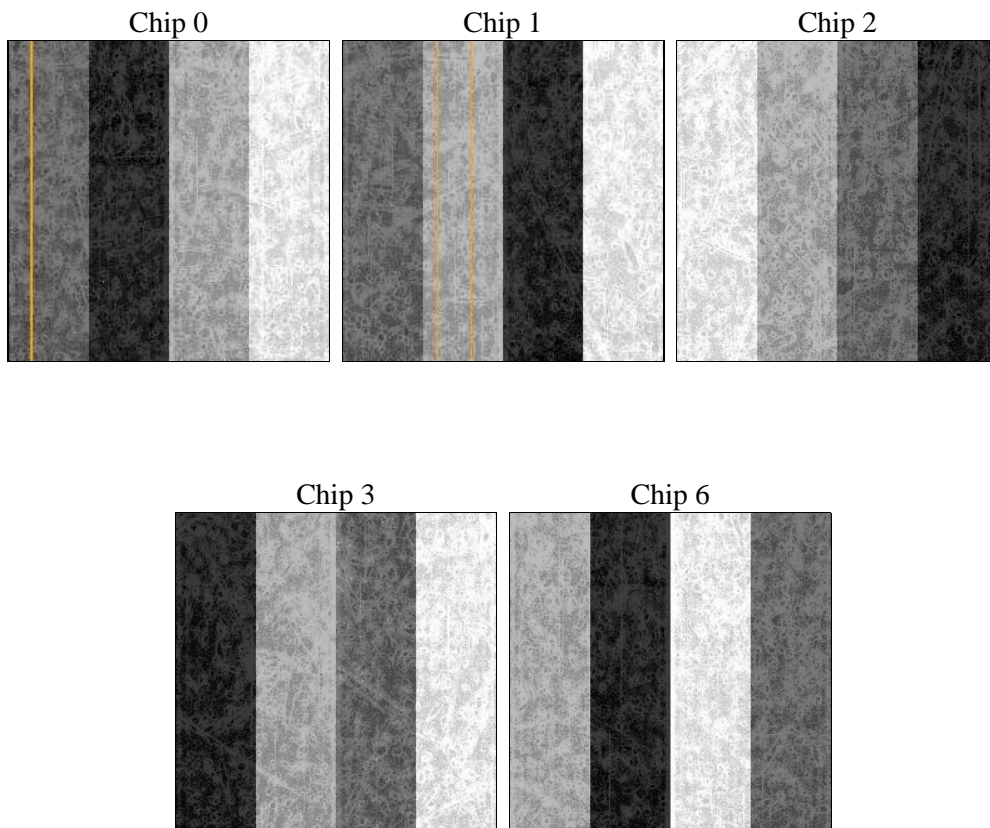
2 OBI

2.1 OBI

2.1.1 Images



2.1.2 Bias



2.1.3 Parameters

obi_num	0	Obi number	sched_exp_time	10000.000000	[s] Scheduled observation exposure time
ascdsver	8.4.5	Processing system revision	ontime	10140.100077987	Sum of GTIs [s]
caldbver	4.4.10	 	ontime0	10140.100077987	Sum of GTIs [s]
date	2012-06-09T21:54:05	Date and time of file creation	ontime1	10140.100077987	Sum of GTIs [s]
revision	2	Processing version of data	ontime2	10140.100077987	Sum of GTIs [s]
			ontime3	10140.100077987	Sum of GTIs [s]
			ontime6	10140.100077987	Sum of GTIs [s]
			l1events	476479	Number of level 1 events

2.1.4 Events

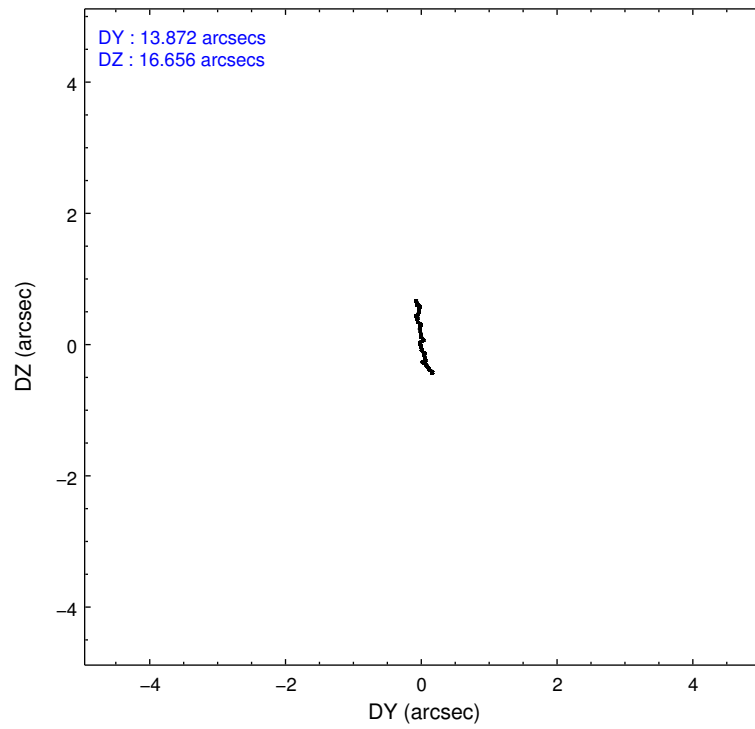
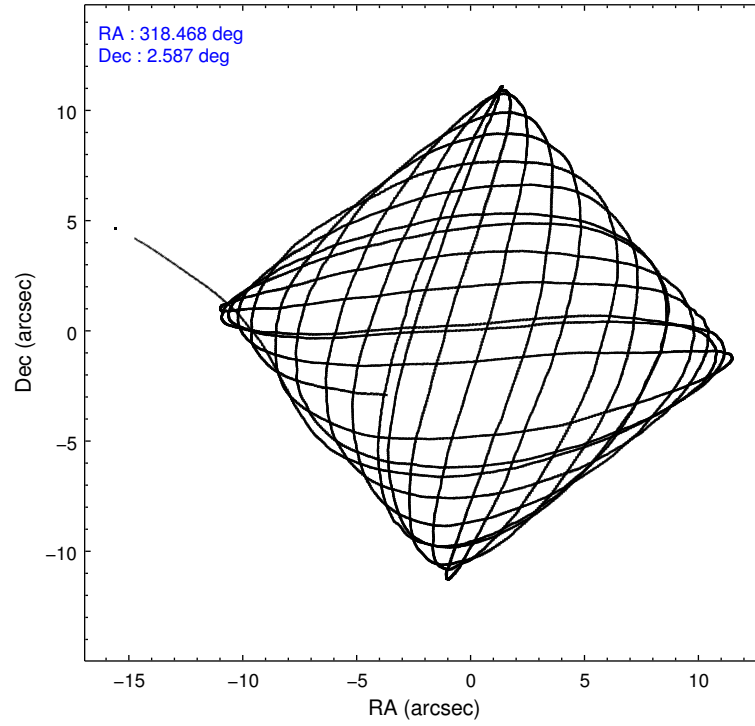
	ccd 0	ccd 1	ccd 2	ccd 3	ccd 6
level 1 events	87096	89363	101679	104375	93966
rejected events	77060	76384	89911	86196	84511
rejected %	88%	85%	88%	82%	89%

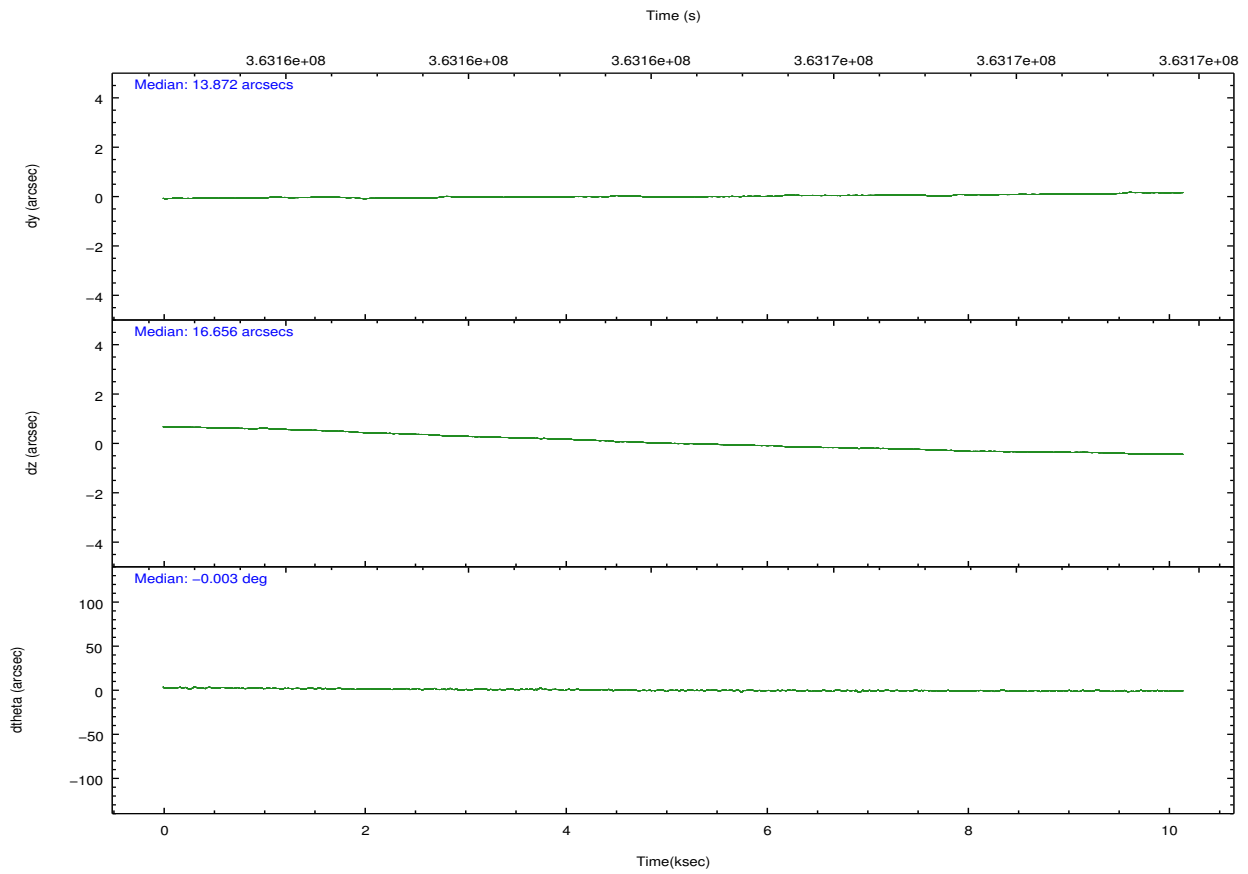
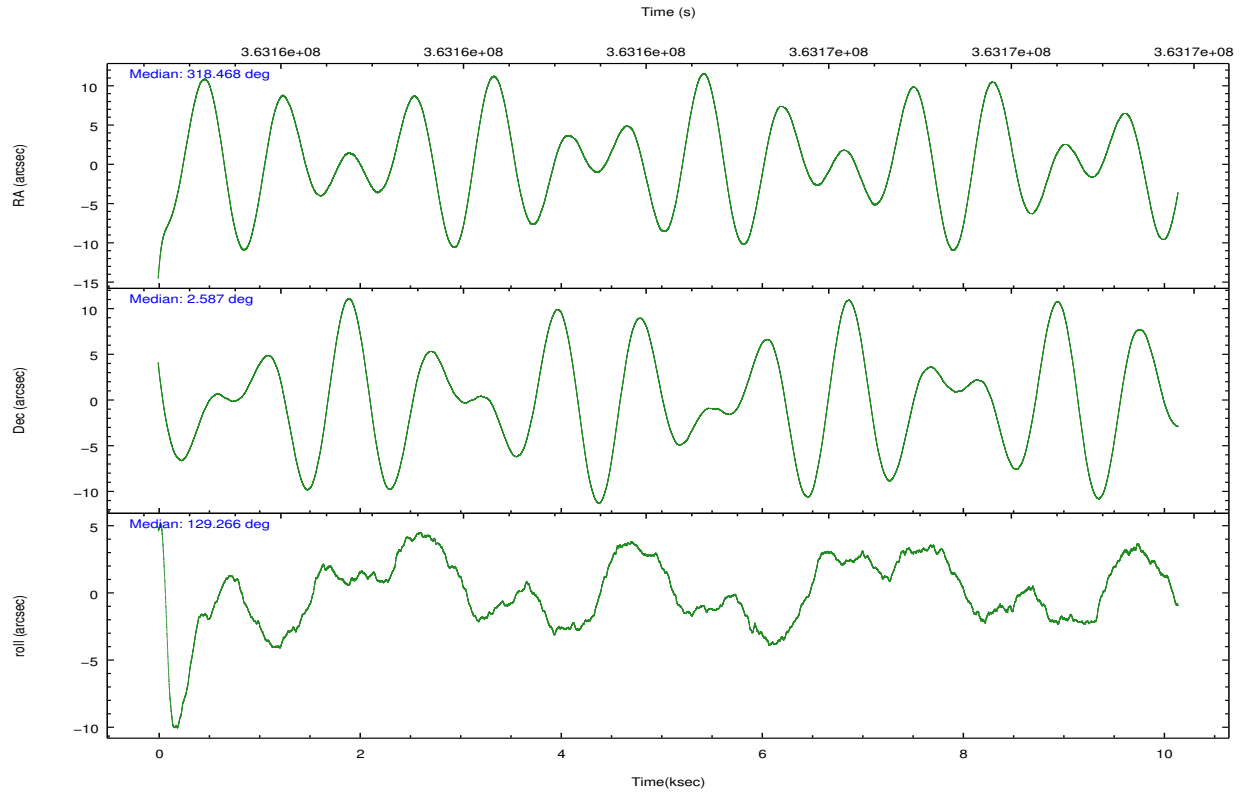
	ccd 0	ccd 1	ccd 2	ccd 3	ccd 6
grade 0 events	4174	6219	5768	11164	3718
	4%	6%	5%	10%	3%
grade 1 events	59	63	80	104	53
	0%	0%	0%	0%	0%
grade 2 events	2508	2758	2585	2991	2193
	2%	3%	2%	2%	2%
grade 3 events	1054	1223	1120	1324	1059
	1%	1%	1%	1%	1%
grade 4 events	990	1206	1010	1365	997
	1%	1%	0%	1%	1%
grade 5 events	3424	3612	3351	3995	3721
	3%	4%	3%	3%	3%
grade 6 events	1904	2254	1897	2060	2082
	2%	2%	1%	1%	2%
grade 7 events	72983	72028	85868	81372	80143
	83%	80%	84%	77%	85%

2.2 Compared Parameters

Parameter	Planned	Actual	Parameter	Planned	Actual
Instrument	ACIS	ACIS	Obspar format version number	7	7
Detector	ACIS-01236	ACIS-01236	Obspar file type	PREDICTED	ACTUAL
Grating	NONE	NONE	Obspar update status	NONE	UPDATED
Data mode	VFAINT	VFAINT	CCD I0 on	Y	Y
Observation mode	POINTING	POINTING	CCD I1 on	Y	Y
[deg] Pointing RA	318.493442	318.4675943490906	CCD I2 on	Y	Y
[deg] Pointing Dec	2.577002	2.586613370333165	CCD I3 on	Y	Y
[deg] Pointing Roll	129.060412	129.2702803844438	CCD S0 on	N	N
[mm] SIM focus pos	-0.782348	-0.7809083437167272	CCD S1 on	N	N
[mm] SIM defocus	0	0.001439871863259334	CCD S2 on	O1	Y
[mm] SIM translation stage pos	-228.592463	-228.5990329025337	CCD S3 on	N	N
[mm] SIM translation stage offset	-5	-4.993420100396037	CCD S4 on	N	N
[s] Observation start time (MET)	363159302.184000	363158018.88089	CCD S5 on	N	N
Observation start date	2009-07-05T05:33:56	2009-07-05T05:13:38	Number of optional ACIS chips dropped	0	0
[s] Observation end time (MET)	363169302.184000	363169690.55647	On-chip summing requested	N	N
Observation end date	2009-07-05T08:20:36	2009-07-05T08:28:10	Subarray requested	NONE	NONE
Read mode	TIMED	TIMED	Alternating exposures requested	N	N
			[s] Primary exposure time	0.000000	3.1

2.3 Aspect



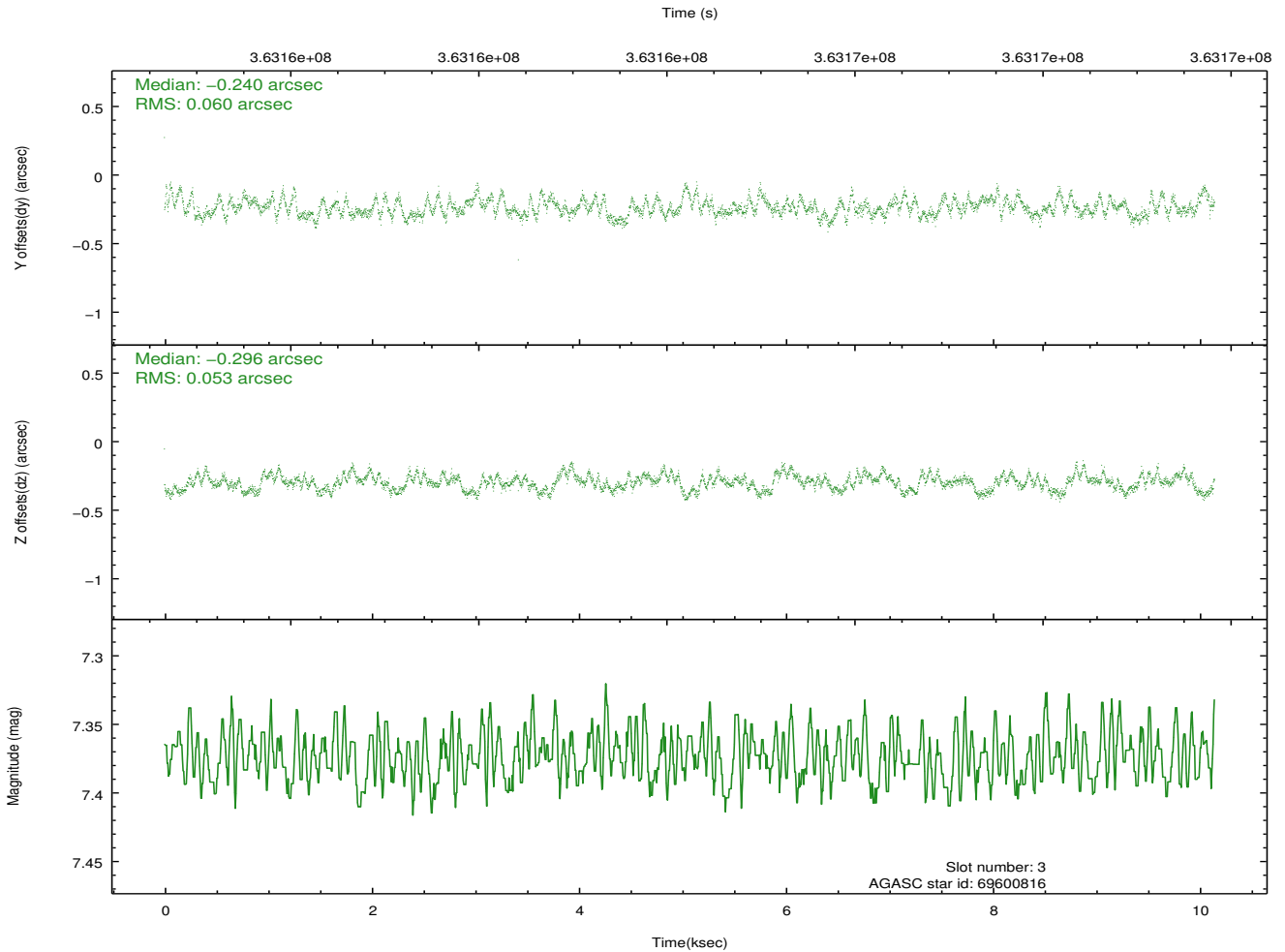
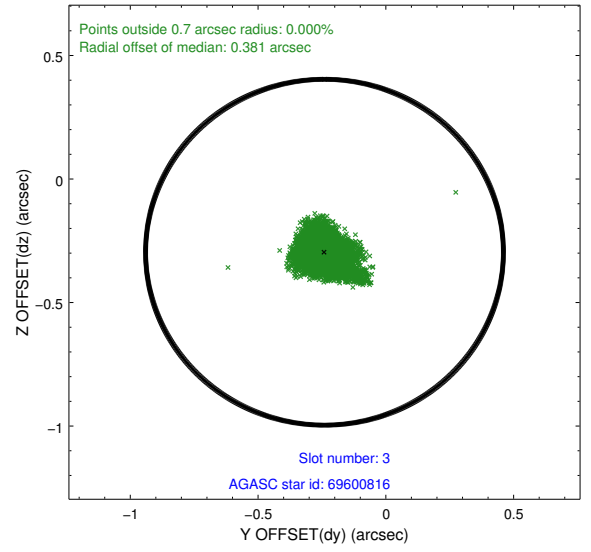
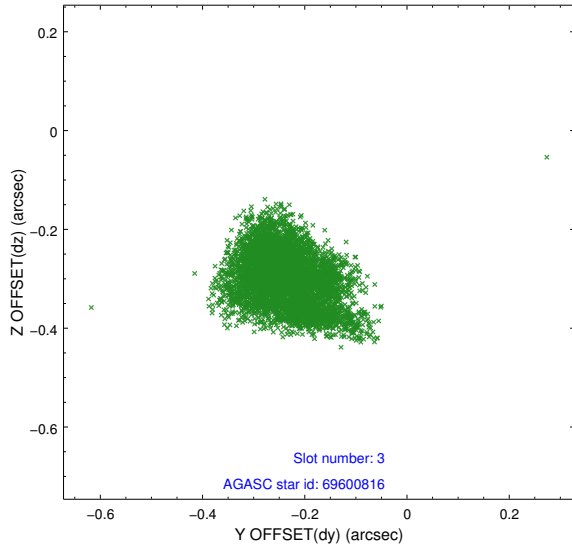


Slot Statistics

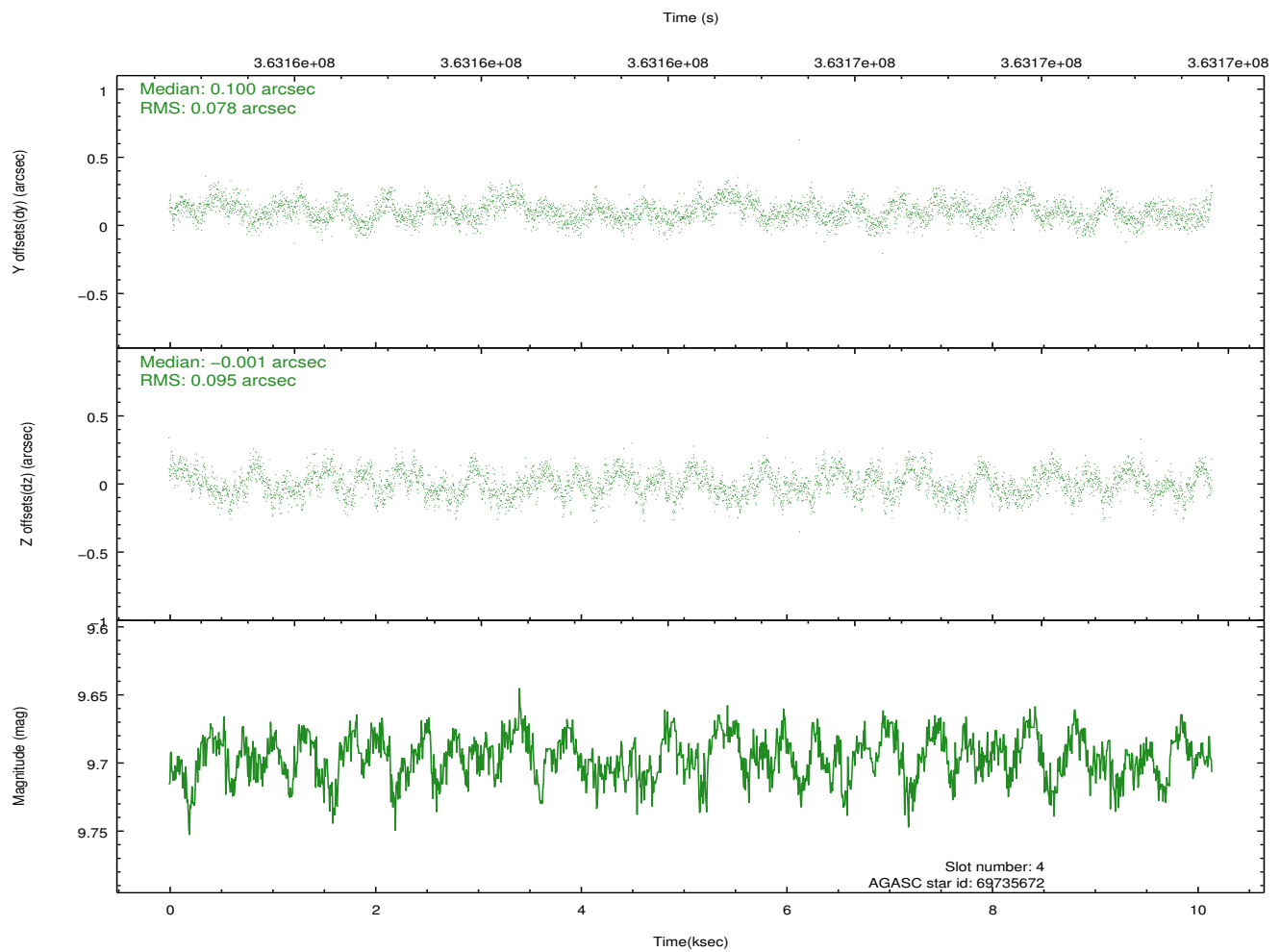
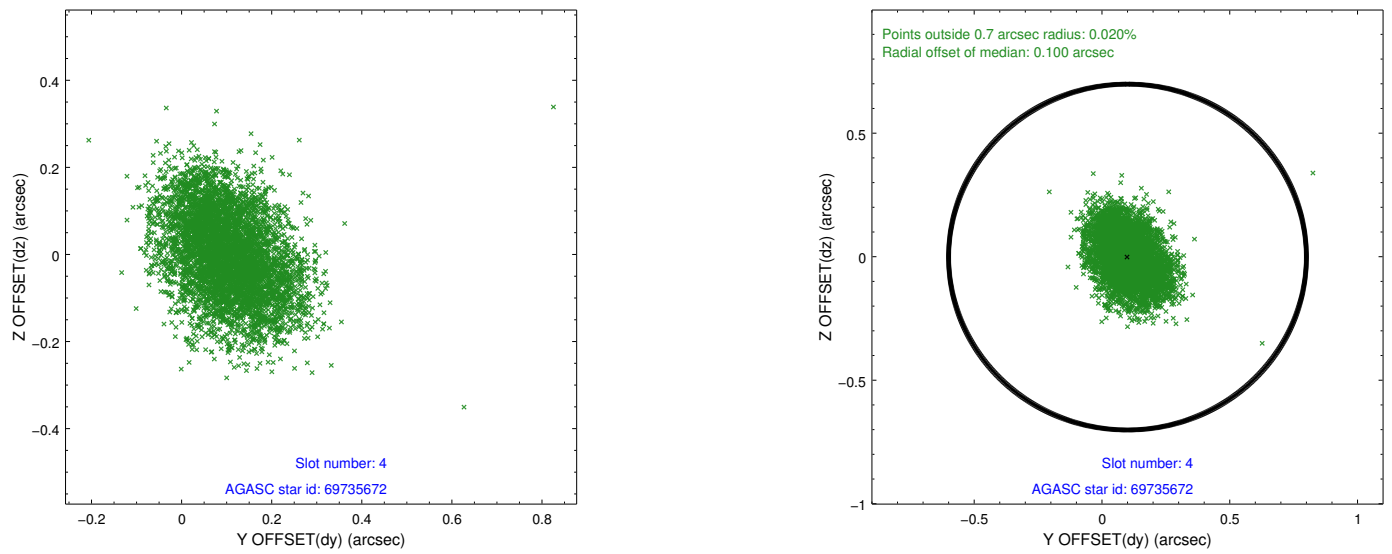
slot	status	id	mag	n_pts	med_dy	med_dz	dr1	dr2	ra	dec	mean_y	mean_z
0	FID	ACIS-I-1	7.03	2475	0.072	-0.016	0.012	0.022	0.000000	0.000000	925.60	-942.83
1	FID	ACIS-I-5	7.00	2475	-0.239	0.072	0.008	0.013	0.000000	0.000000	-1822.57	954.39
2	FID	ACIS-I-6	7.02	2475	0.076	0.015	0.011	0.017	0.000000	0.000000	390.53	1599.47
3	GUIDE	69600816	7.37	4950	-0.240	-0.296	0.085	0.134	318.188852	2.642739	874.13	701.51
4	GUIDE	69735672	9.70	4943	0.100	-0.001	0.131	0.208	318.799779	2.775533	-138.56	-1305.31
5	GUIDE	69736648	9.82	4944	0.137	0.175	0.136	0.215	319.118310	2.690130	-1098.78	-2001.85
6	GUIDE	69737960	9.80	4935	0.077	0.101	0.127	0.207	318.784877	2.434670	-1058.29	-491.79
7	GUIDE	69740064	9.37	4946	-0.078	0.028	0.094	0.148	318.808740	2.249245	-1630.95	-137.01

2.4 Star Slots

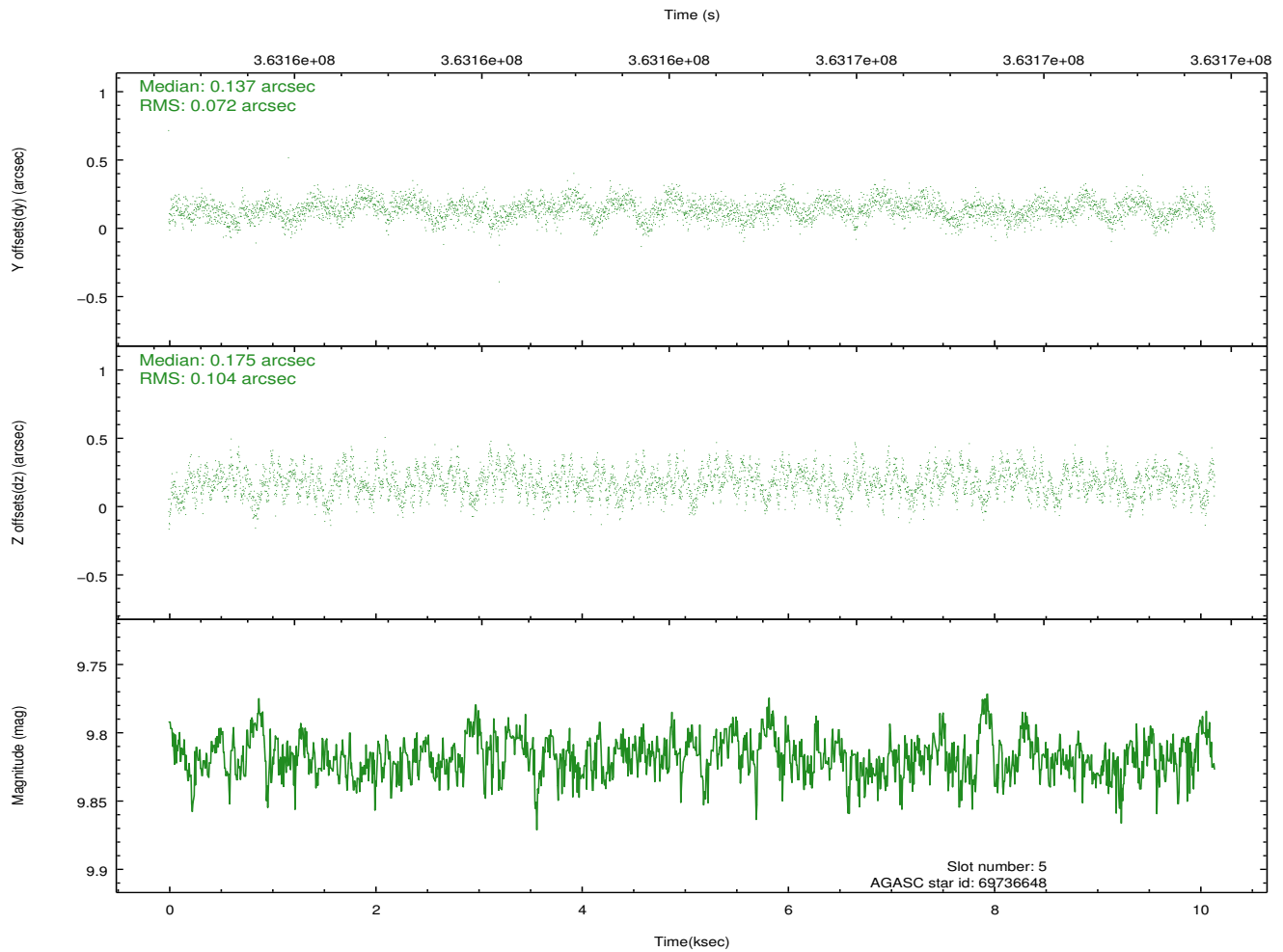
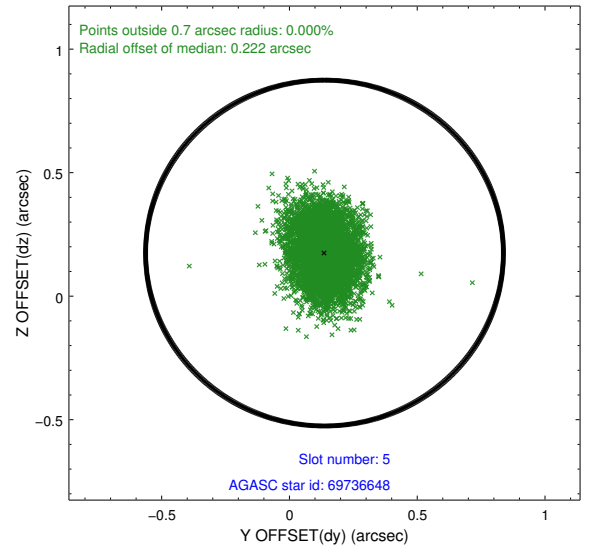
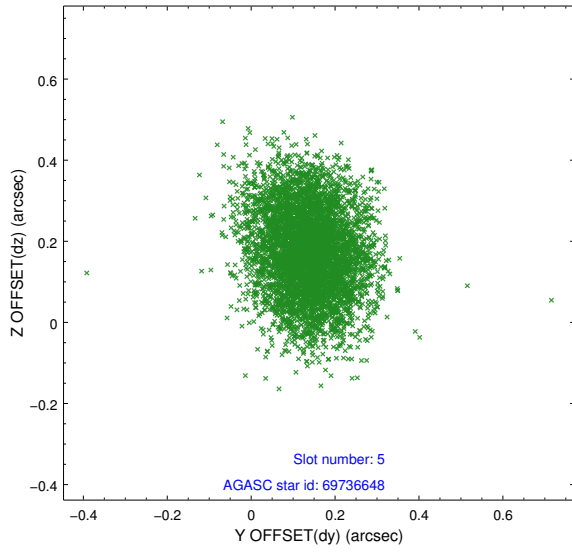
2.4.1 Slot 3



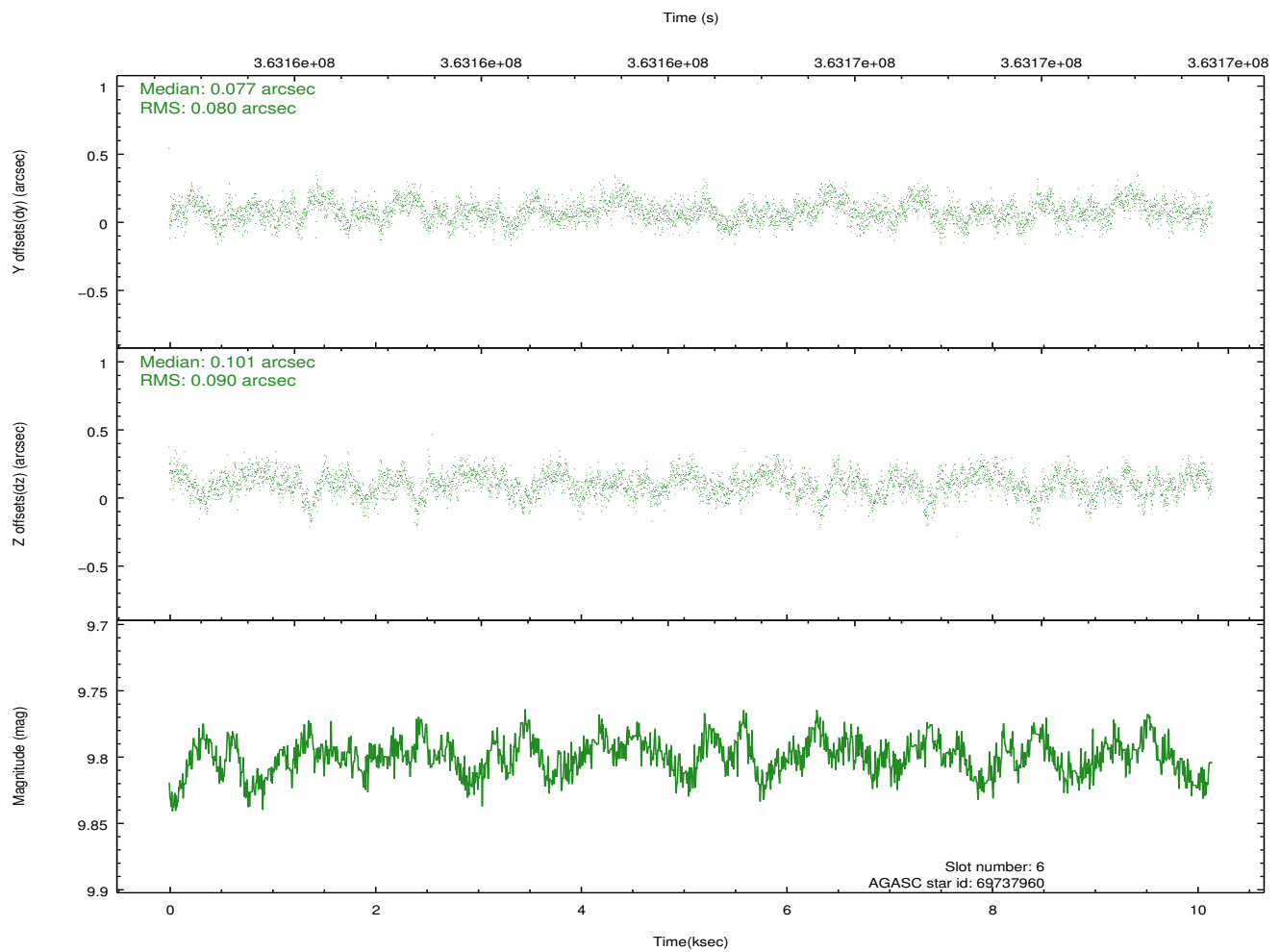
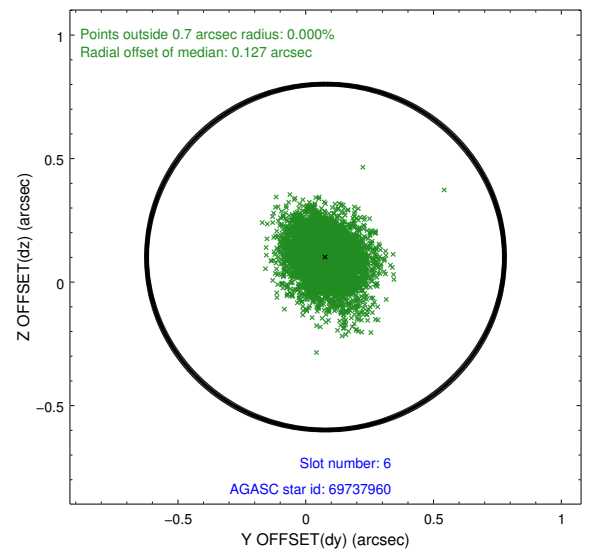
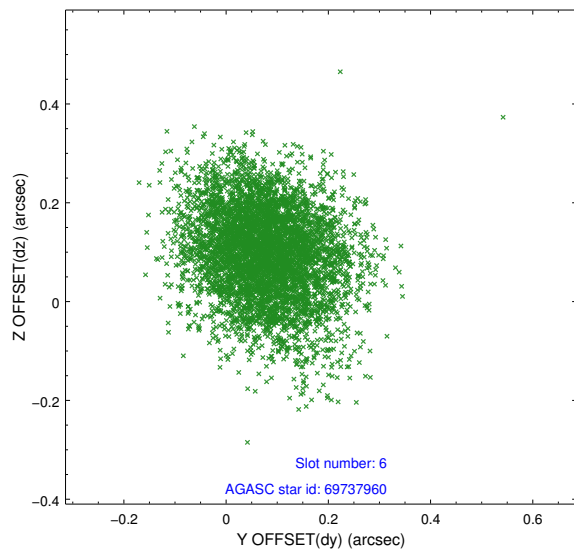
2.4.2 Slot 4



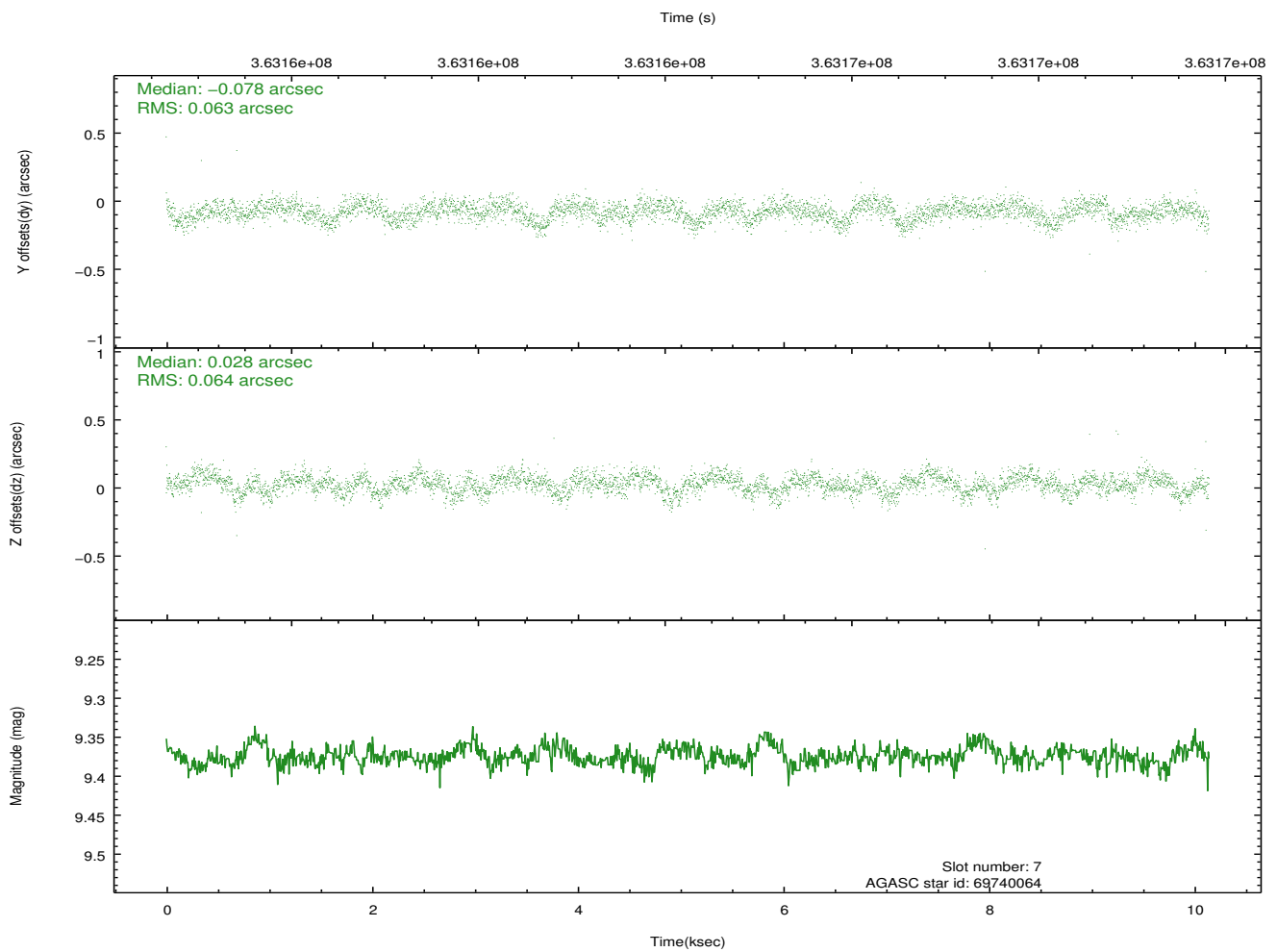
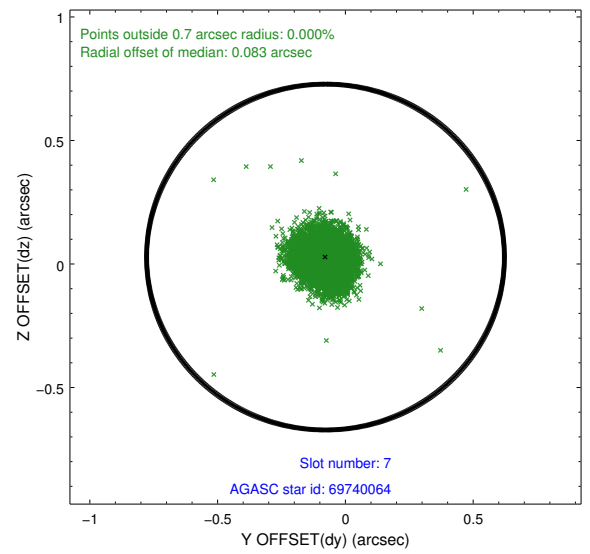
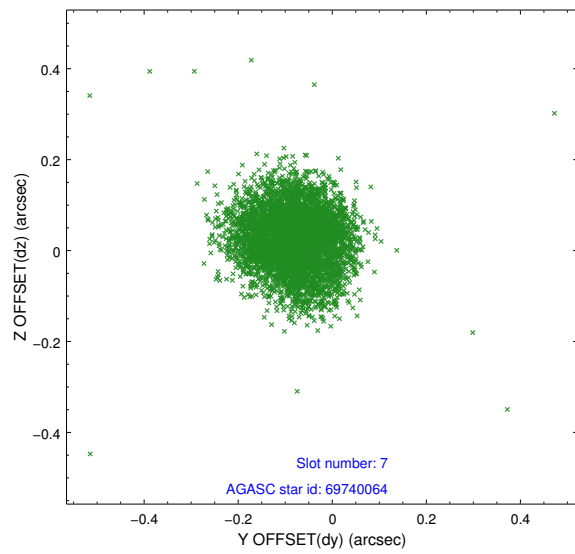
2.4.3 Slot 5



2.4.4 Slot 6

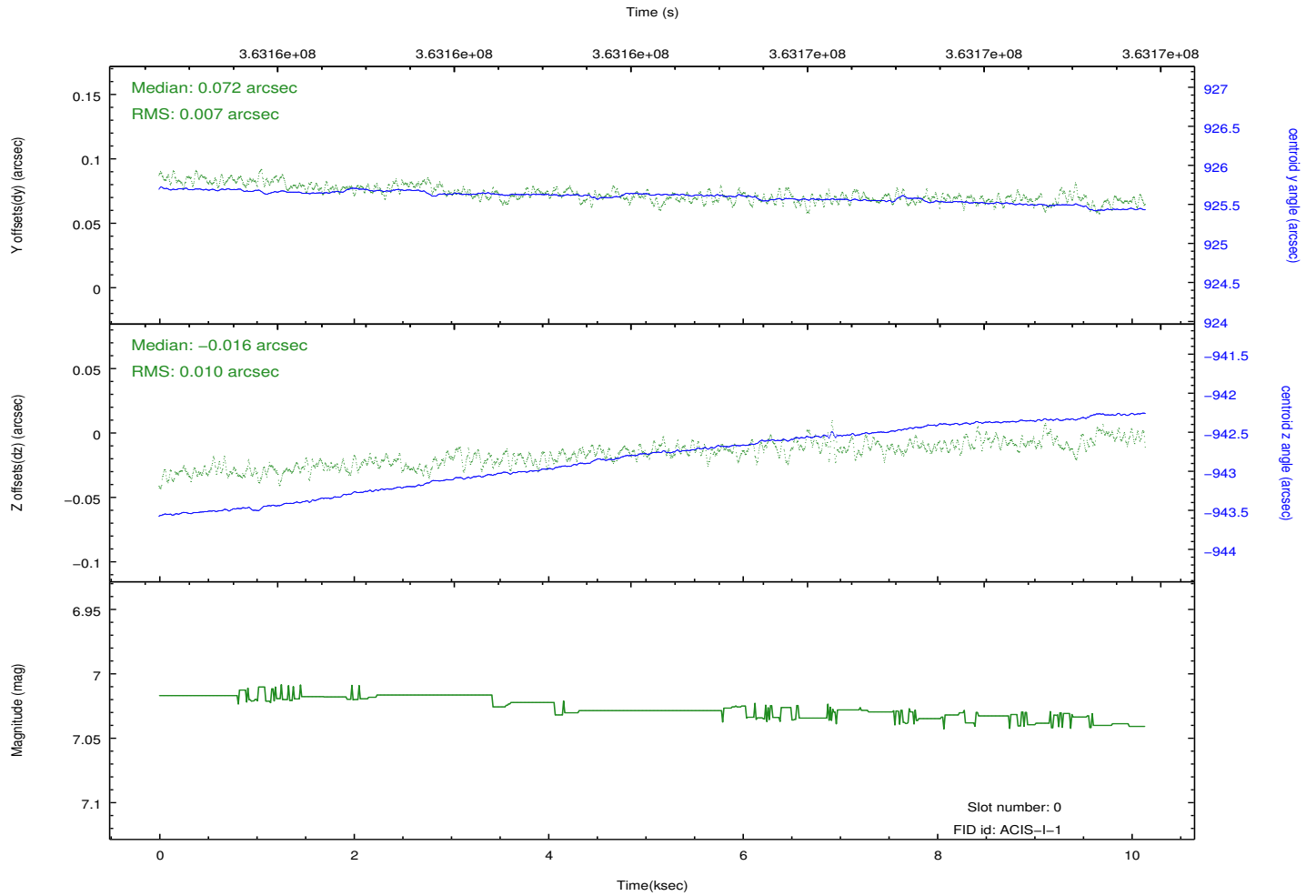
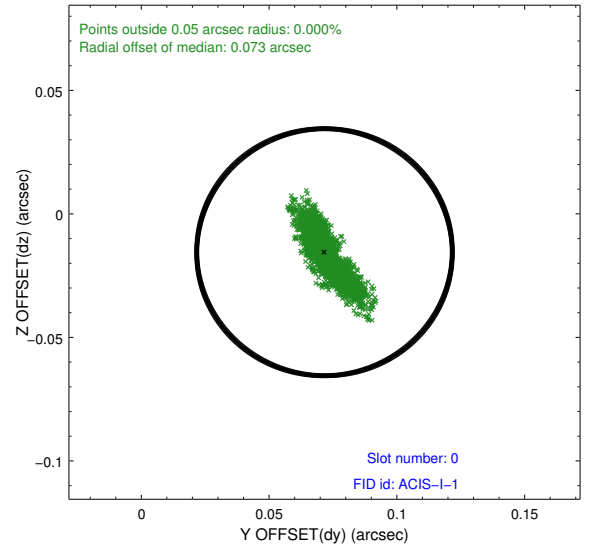
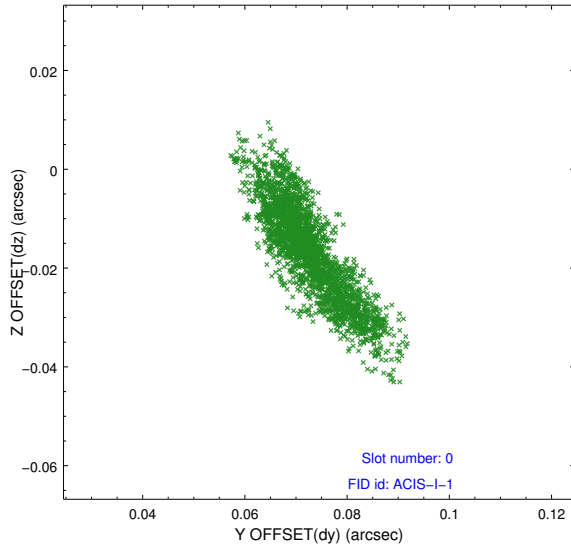


2.4.5 Slot 7

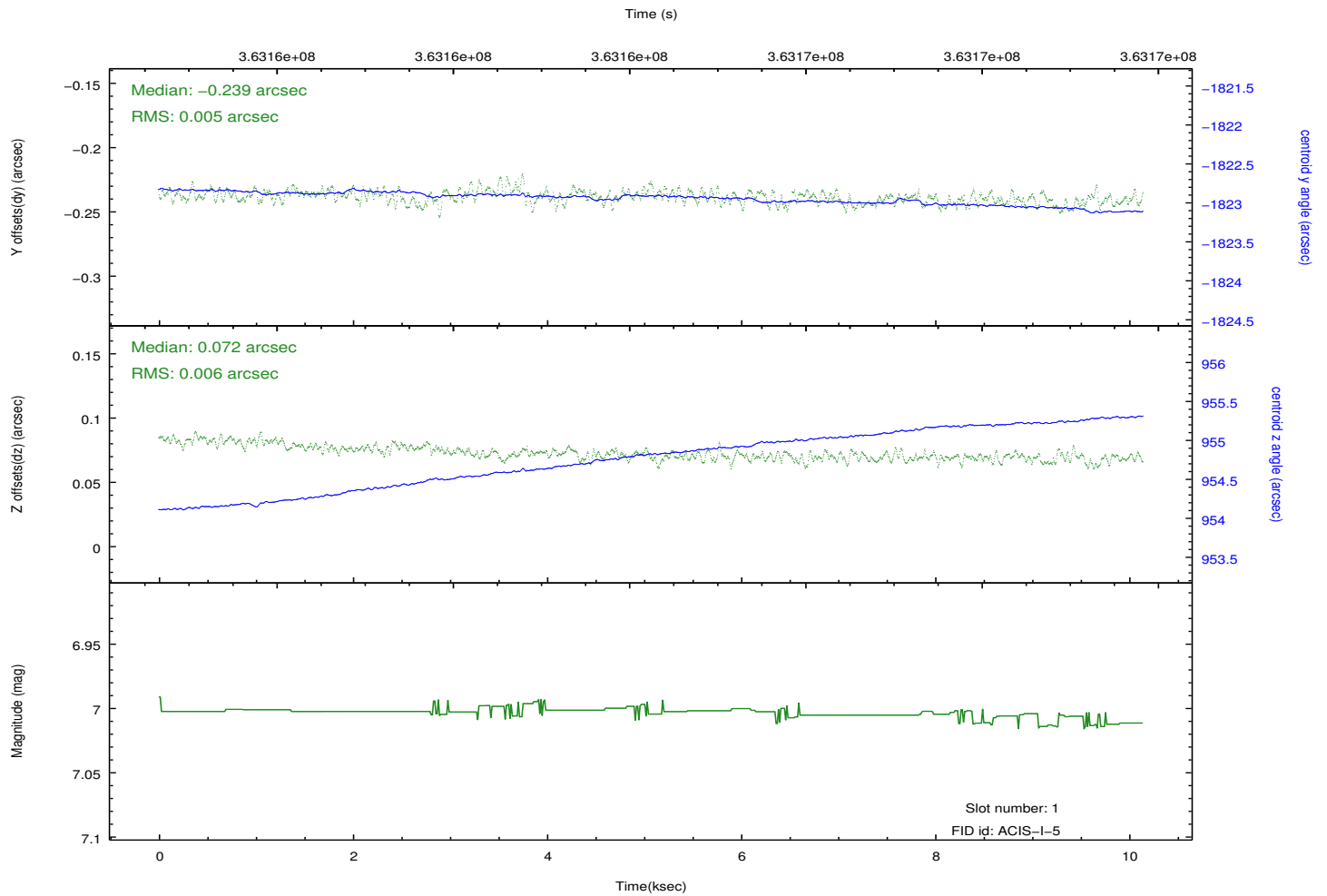
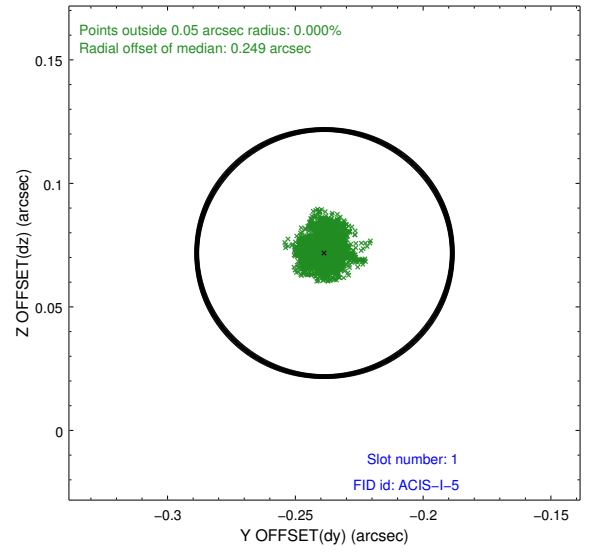
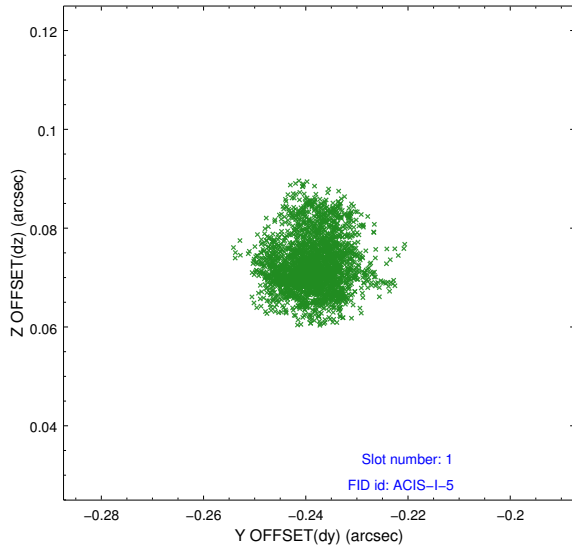


2.5 FID Slots

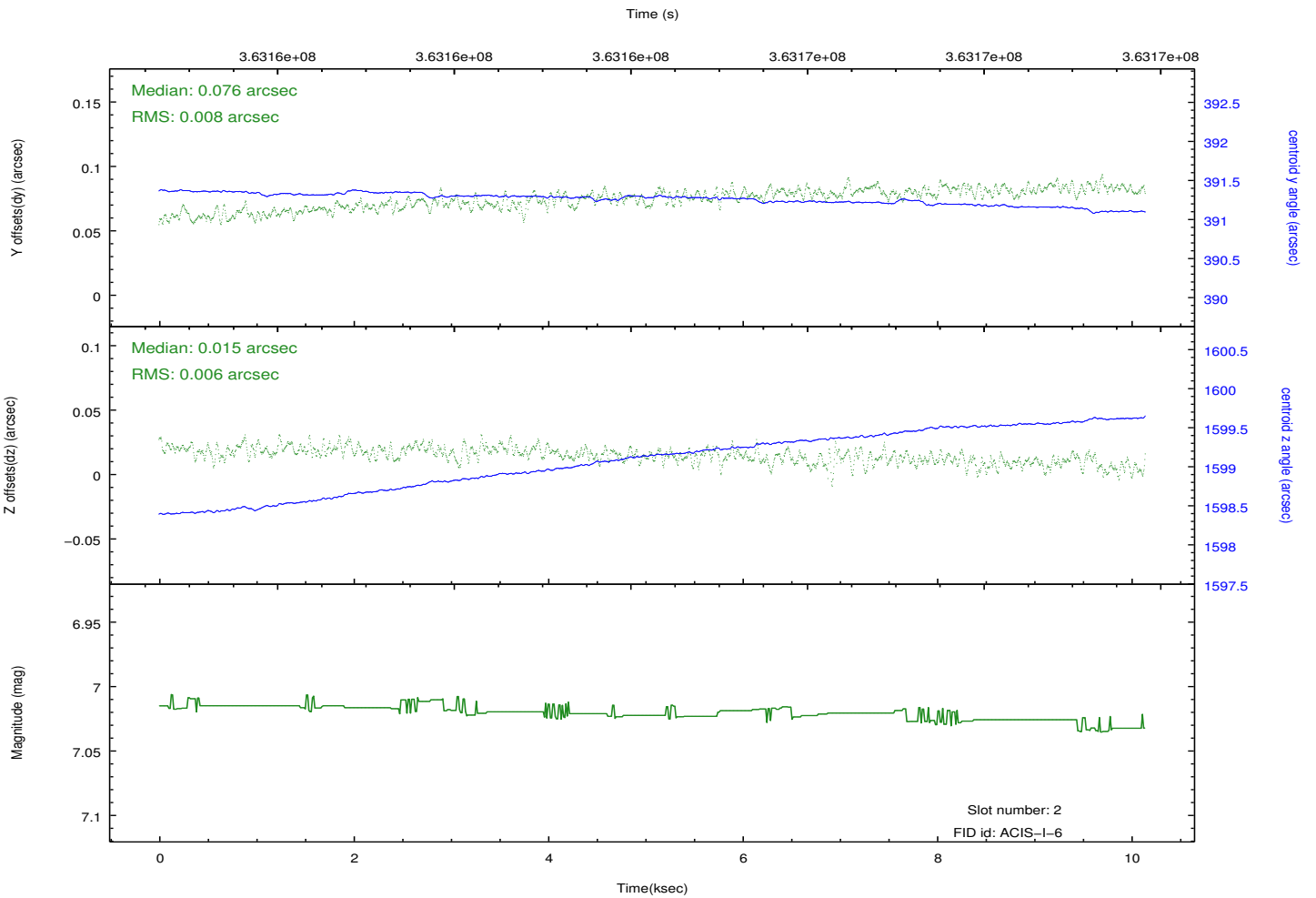
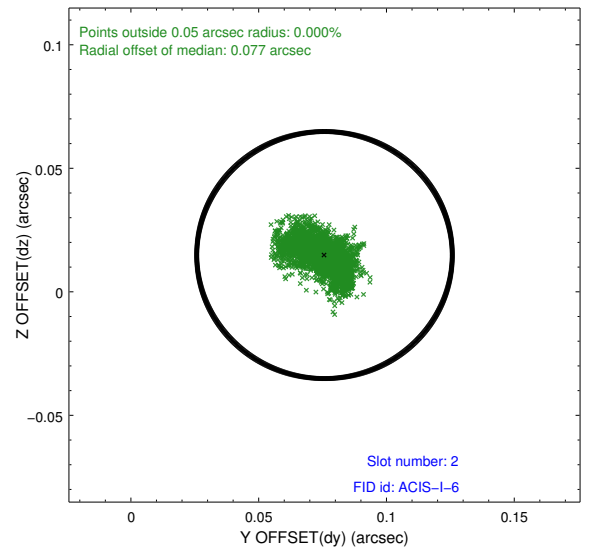
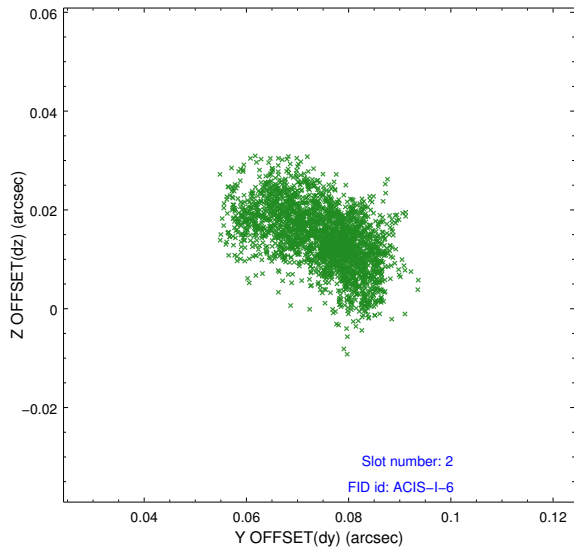
2.5.1 Slot 0



2.5.2 Slot 1



2.5.3 Slot 2



A Summary

A.1 Status

V&V Scientist	Jen Lauer
V&V Date (YYYY-MM-DD)	2012.06.13
V&V Edition	1
V&V Disposition and Status	OK
V&V Charge Time	10.1401

A.2 Comments