

V&V Reference Report

L2 ASCDS Version : 8.4.5

Observation 10967 - L2 Version 2
Chandra X-Ray Center

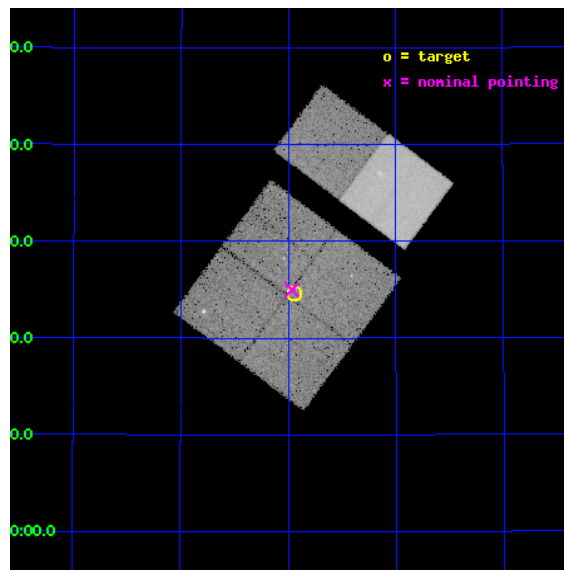
L2 Processing Date : Jun 22 2012

Contents

1	Front	2
2	OBI	3
2.1	OBI	3
2.1.1	Images	3
2.1.2	Bias	3
2.1.3	Parameters	4
2.1.4	Events	4
2.2	Compared Parameters	5
2.3	Aspect	6
2.4	Star Slots	9
2.4.1	Slot 3	9
2.4.2	Slot 4	10
2.4.3	Slot 5	11
2.4.4	Slot 6	12
2.4.5	Slot 7	13
2.5	FID Slots	14
2.5.1	Slot 0	14
2.5.2	Slot 1	15
2.5.3	Slot 2	16
A	Summary	17
A.1	Status	17
A.2	Comments	17

1 Front

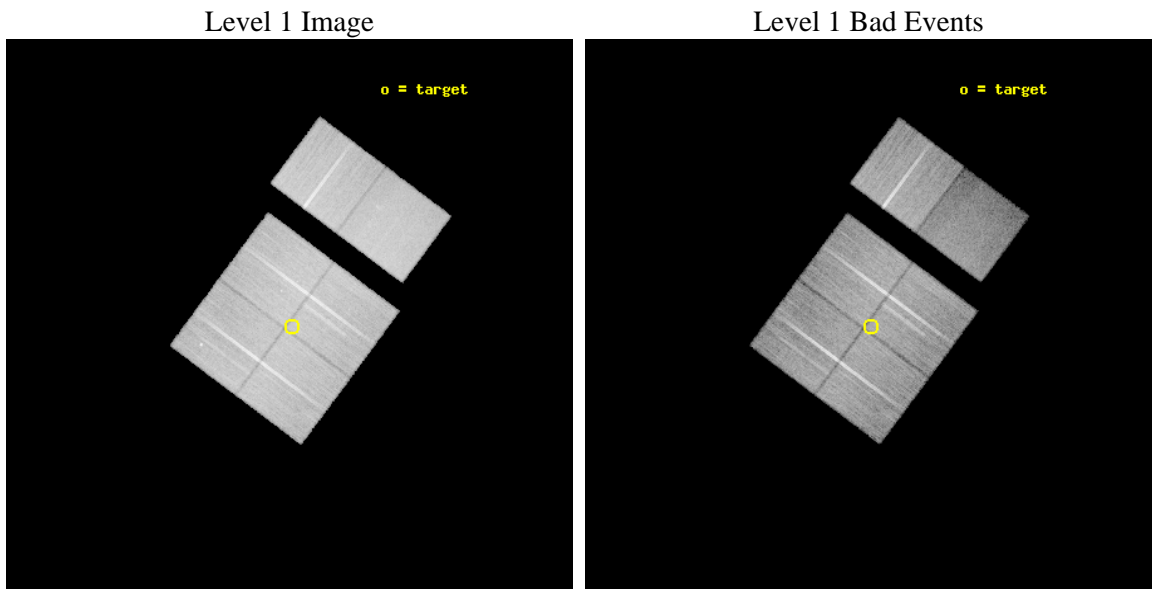
seq_num	200599	Sequence number
obs_id	10967	Observation id
title	The Chandra Cygnus OB2 Survey	Proposal title
observer	Dr. Jeremy Drake	Principal investigator
object	Cygnus OB2	Source name
dtcycle	0	
cycle	P	events from which exps? Prim/Second/Both
ra_targ	308.735307	Observer's specified target RA [deg]
dec_targ	41.410072	Observer's specified target Dec [deg]
ra_nom	308.74162267448	Nominal RA [deg]
dec_nom	41.41659987555	Nominal Dec [deg]
roll_nom	36.704503987711	Nominal Roll [deg]
revision	2	Processing version of data
ontime	29254.289126635	Sum of GTIs [s]
livetime	28883.853702895	Livetime [s]
ontime0	29254.166006625	Sum of GTIs [s]
ontime1	29254.207046628	Sum of GTIs [s]
ontime2	29251.007126331	Sum of GTIs [s]
ontime3	29254.289126635	Sum of GTIs [s]
ontime6	29251.130246282	Sum of GTIs [s]
ontime7	29254.330166638	Sum of GTIs [s]
l2events	211506	Number of level 2 events



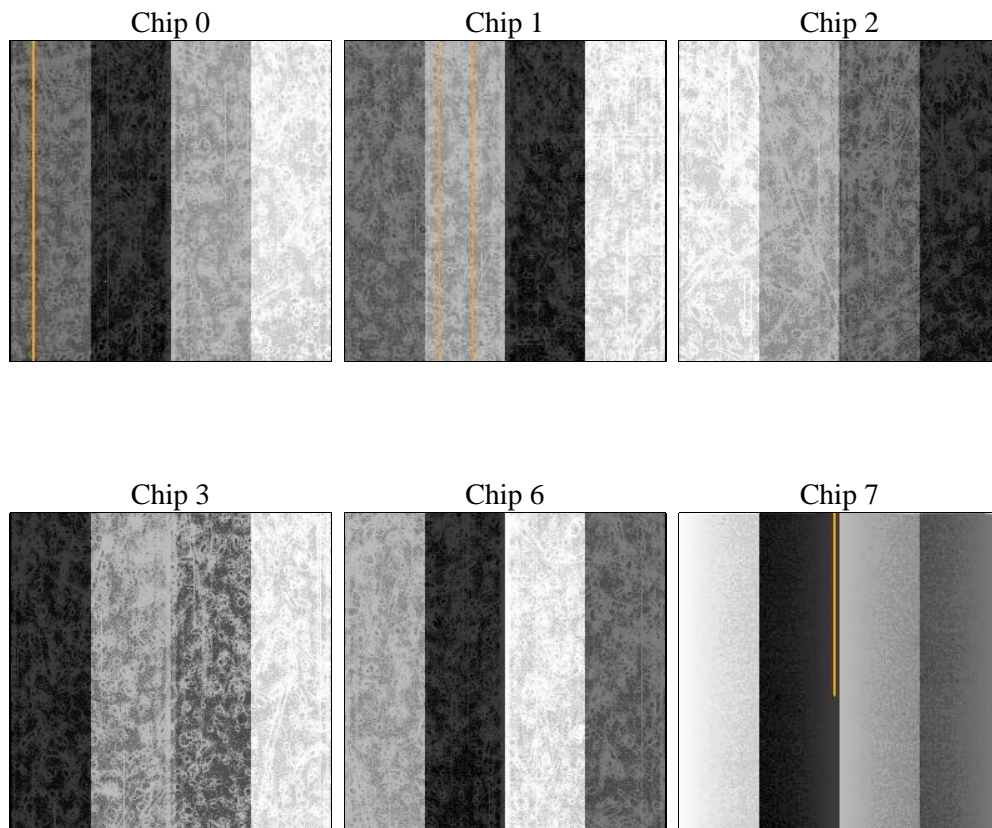
2 OBI

2.1 OBI

2.1.1 Images



2.1.2 Bias



2.1.3 Parameters

obi_num	0	Obi number	sched_exp_time	29500.000000	[s] Scheduled observation exposure time
ascdsver	8.4.5	Processing system revision	ontime	29254.289126635	Sum of GTIs [s]
caldsver	4.4.10	 	ontime0	29254.166006625	Sum of GTIs [s]
date	2012-06-22T04:20:09	Date and time of file creation	ontime1	29254.207046628	Sum of GTIs [s]
revision	2	Processing version of data	ontime2	29251.007126331	Sum of GTIs [s]
			ontime3	29254.289126635	Sum of GTIs [s]
			ontime6	29251.130246282	Sum of GTIs [s]
			ontime7	29254.330166638	Sum of GTIs [s]
			l1events	1319075	Number of level 1 events

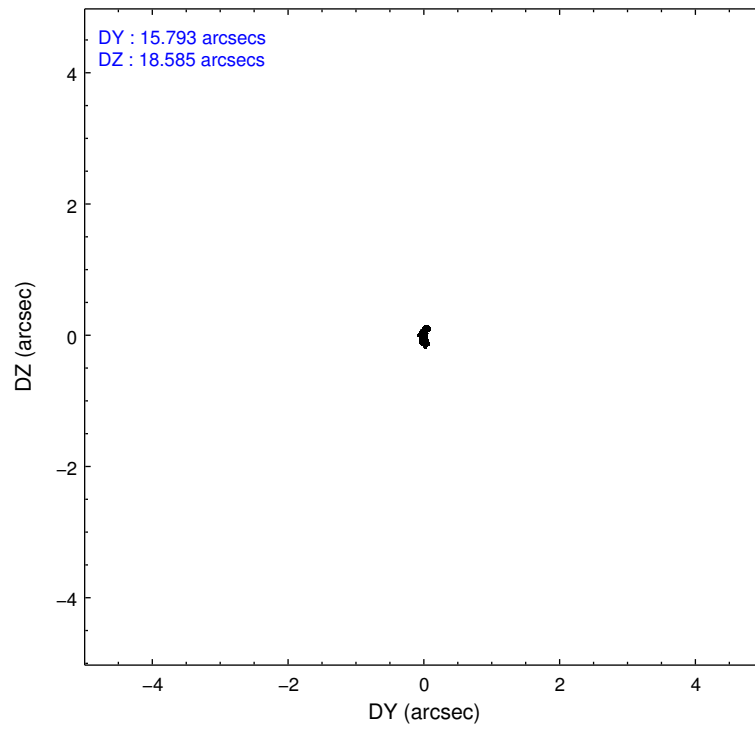
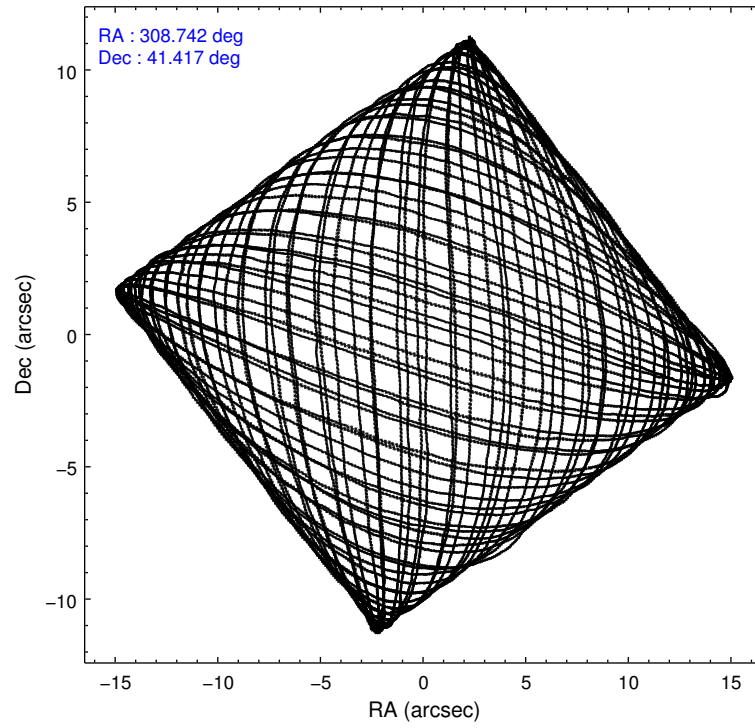
2.1.4 Events

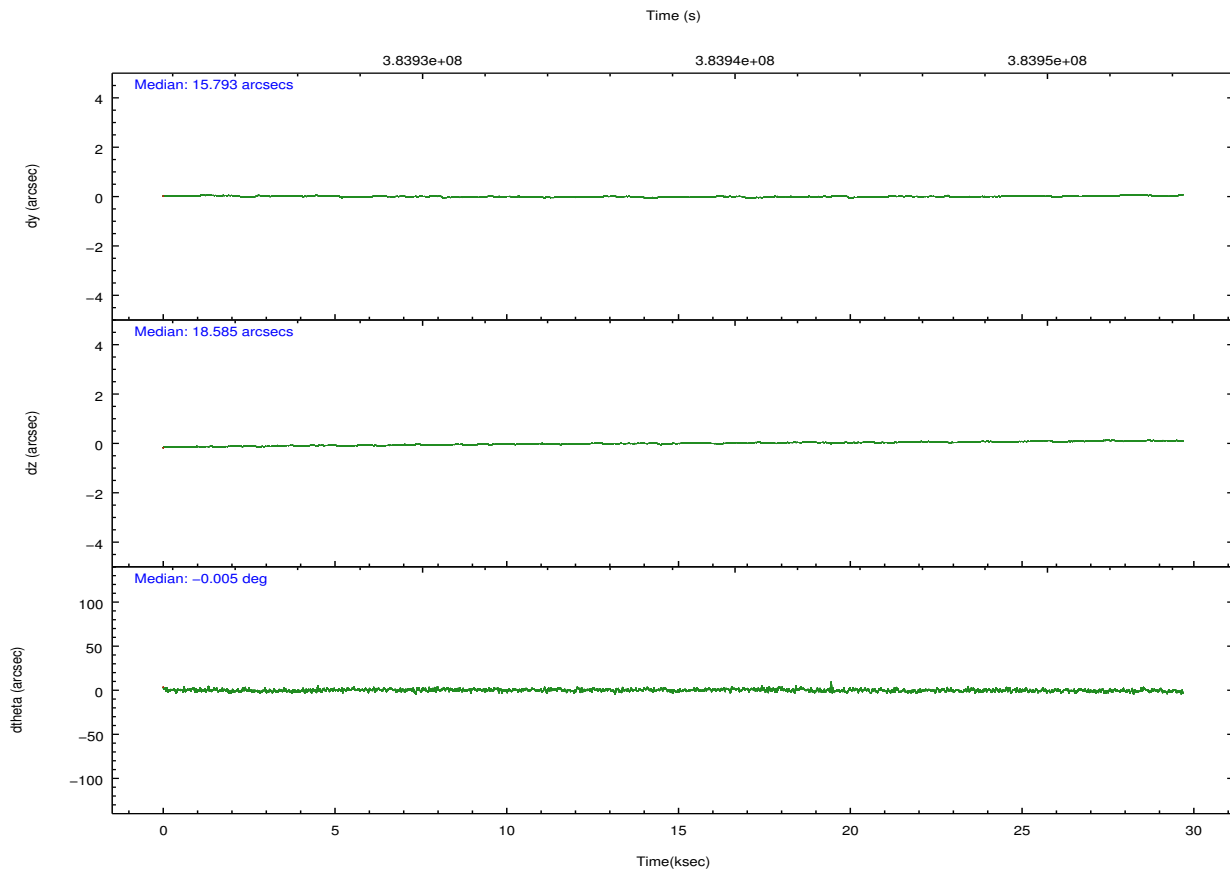
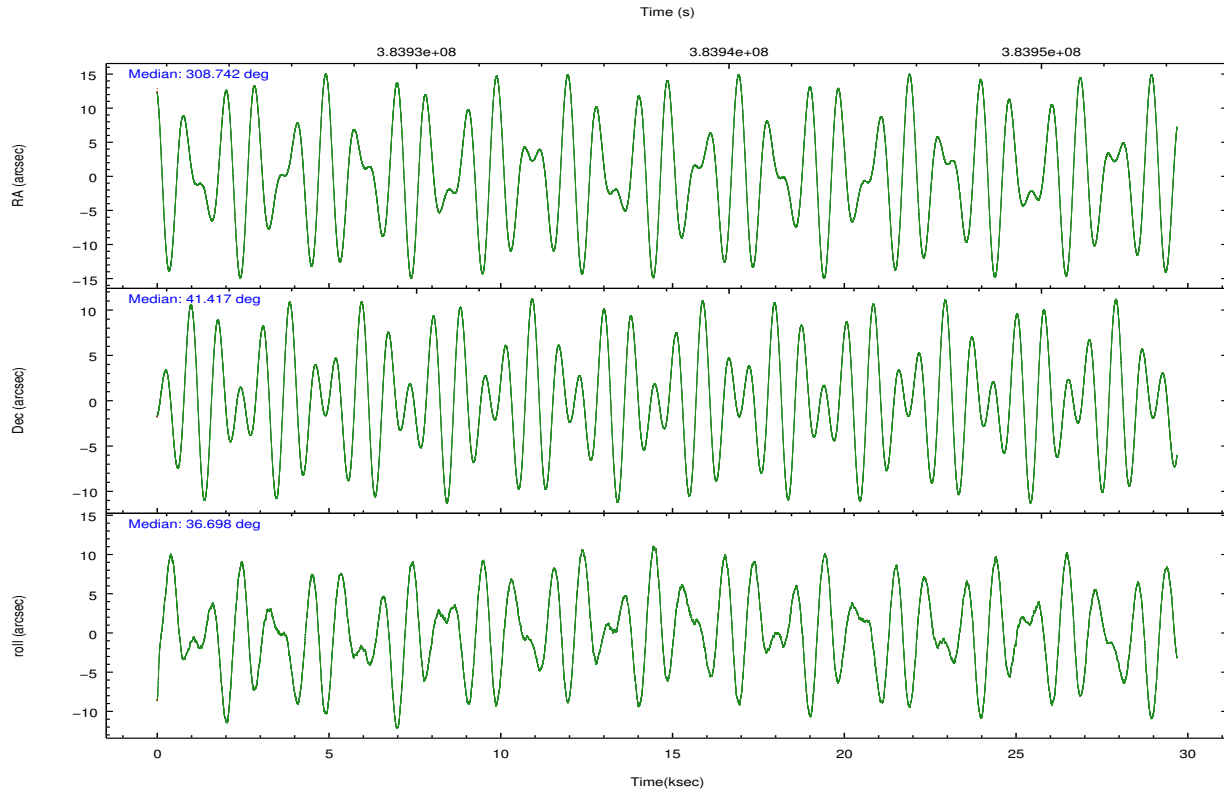
	ccd 0	ccd 1	ccd 2	ccd 3	ccd 6	ccd 7		ccd 0	ccd 1	ccd 2	ccd 3	ccd 6	ccd 7
level 1 events	202548	210698	228959	220741	228648	227481	grade 0 events	9869	9003	9782	9606	9434	11651
rejected events	177470	185776	204675	197025	203515	115200		4%	4%	4%	4%	4%	5%
rejected %	87%	88%	89%	89%	89%	50%	grade 1 events	148	128	147	150	144	425
								0%	0%	0%	0%	0%	0%
							grade 2 events	5865	5696	5696	5013	5587	24199
								2%	2%	2%	2%	2%	10%
							grade 3 events	2582	2621	2324	2483	2573	10421
								1%	1%	1%	1%	1%	4%
							grade 4 events	2415	2661	2380	2414	2554	10317
								1%	1%	1%	1%	1%	4%
							grade 5 events	7159	7875	6928	8055	8452	23794
								3%	3%	3%	3%	3%	10%
							grade 6 events	4352	4945	4109	4207	4989	55722
								2%	2%	1%	1%	2%	24%
							grade 7 events	170158	177769	197593	188813	194915	90952
								84%	84%	86%	85%	85%	39%

2.2 Compared Parameters

Parameter	Planned	Actual	Parameter	Planned	Actual
Instrument	ACIS	ACIS	Obspar format version number	7	7
Detector	ACIS-012367	ACIS-012367	Obspar file type	PREDICTED	ACTUAL
Grating	NONE	NONE	Obspar update status	NONE	UPDATED
Data mode	VFAINT	VFAINT	CCD I0 on	Y	Y
Observation mode	POINTING	POINTING	CCD I1 on	Y	Y
[deg] Pointing RA	308.727273	308.7416226744773	CCD I2 on	Y	Y
[deg] Pointing Dec	41.391313	41.41659987554989	CCD I3 on	Y	Y
[deg] Pointing Roll	36.505316	36.70450398771089	CCD S0 on	N	N
[mm] SIM focus pos	-0.782348	-0.7809083437167272	CCD S1 on	N	N
[mm] SIM defocus	0	0.001439871863259334	CCD S2 on	O2	Y
[mm] SIM translation stage pos	-233.592463	-233.5874344608287	CCD S3 on	O1	Y
[mm] SIM translation stage offset	0	-0.005018542100998502	CCD S4 on	N	N
[s] Observation start time (MET)	383923351.184000	383922975.25166	CCD S5 on	N	N
Observation start date	2010-03-02T13:21:25	2010-03-02T13:16:15	Number of optional ACIS chips dropped	0	0
[s] Observation end time (MET)	383952851.184000	383952985.20318	On-chip summing requested	N	N
Observation end date	2010-03-02T21:33:05	2010-03-02T21:36:25	Subarray requested	NONE	NONE
Read mode	TIMED	TIMED	Alternating exposures requested	N	N
			[s] Primary exposure time	0.000000	3.2

2.3 Aspect



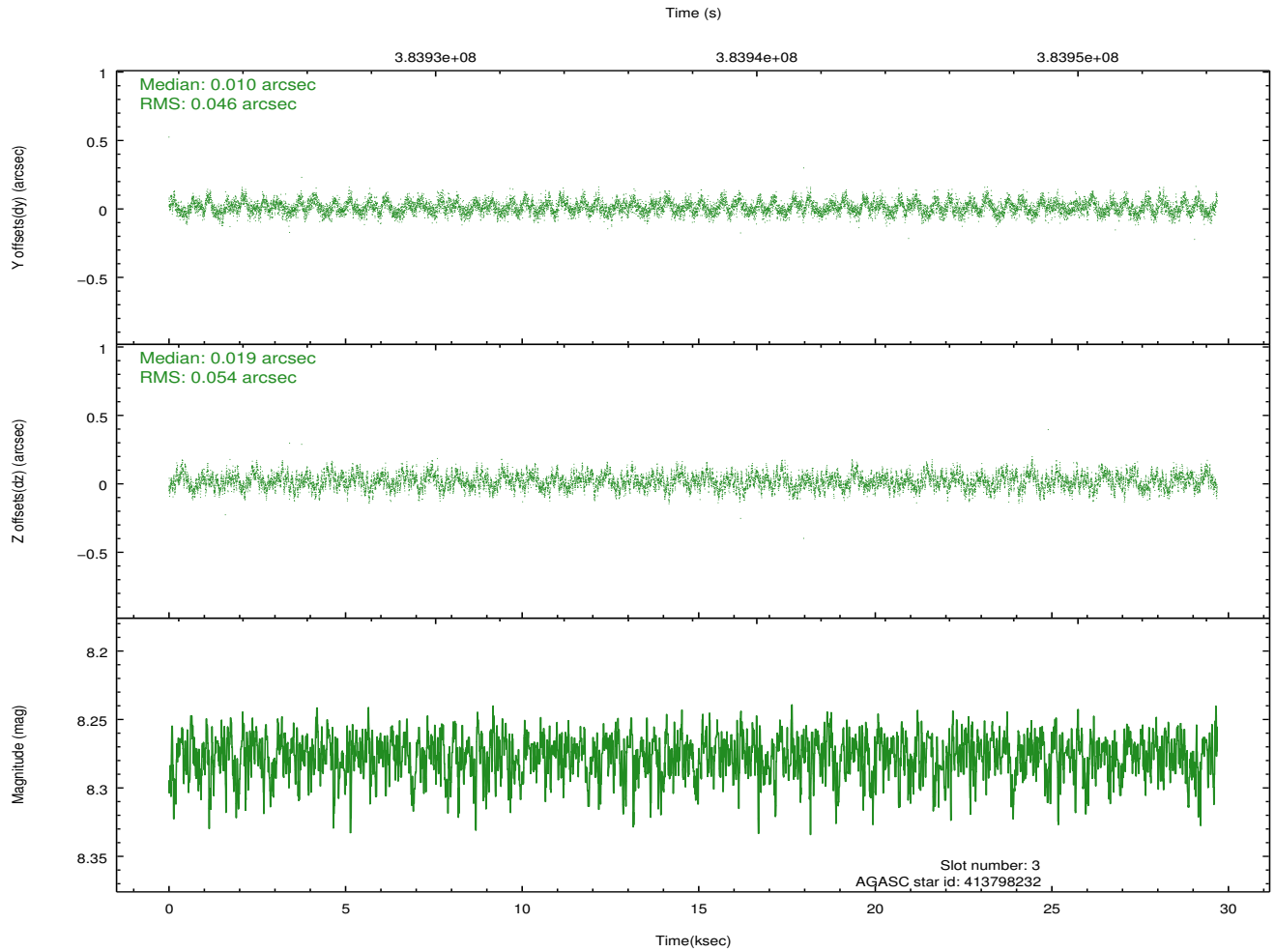
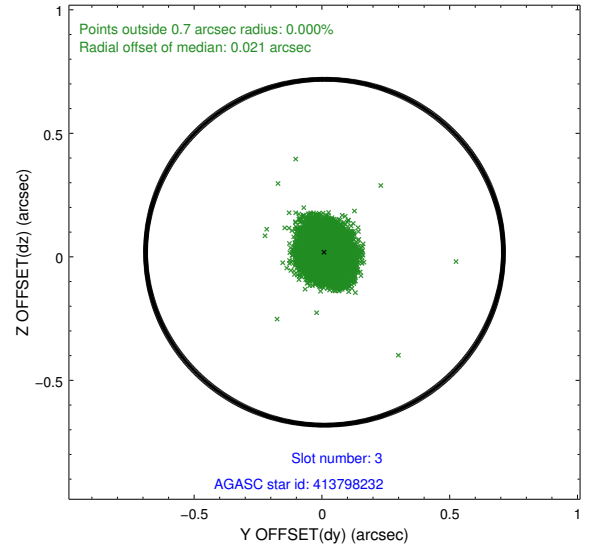
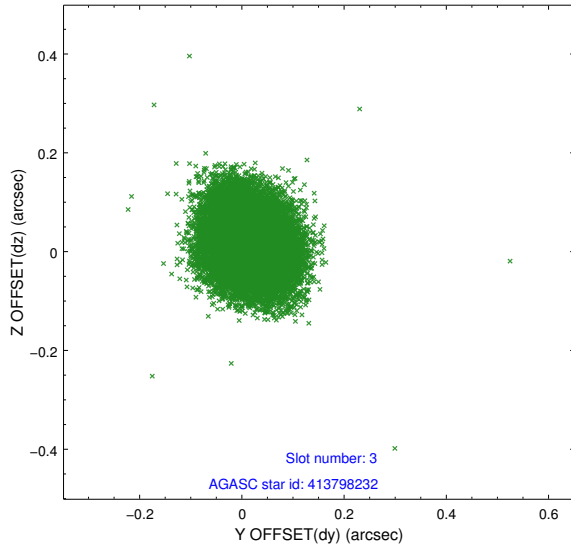


Slot Statistics

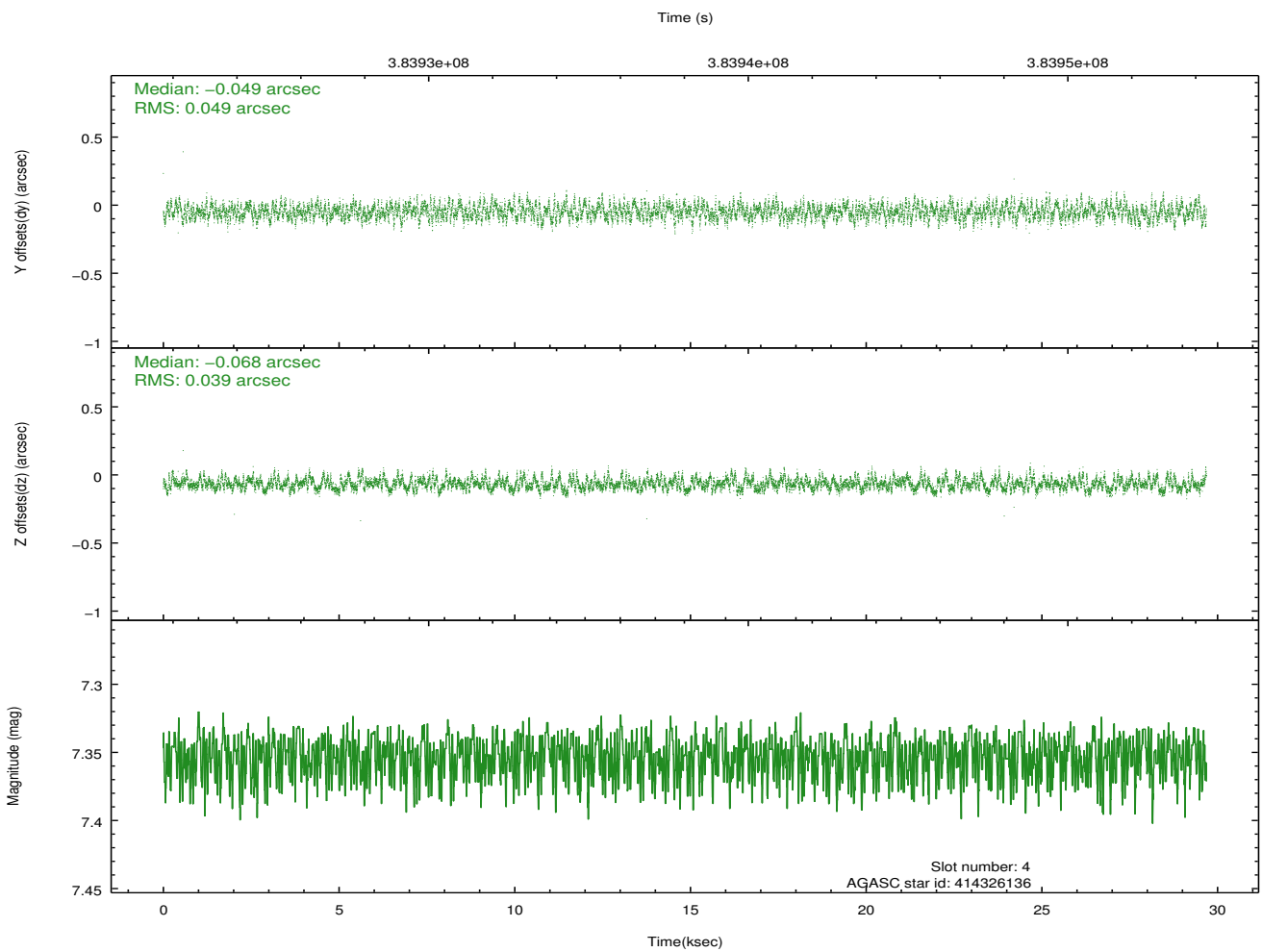
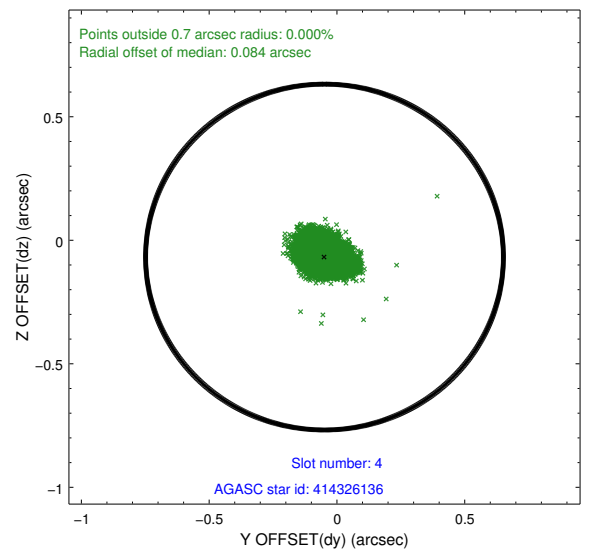
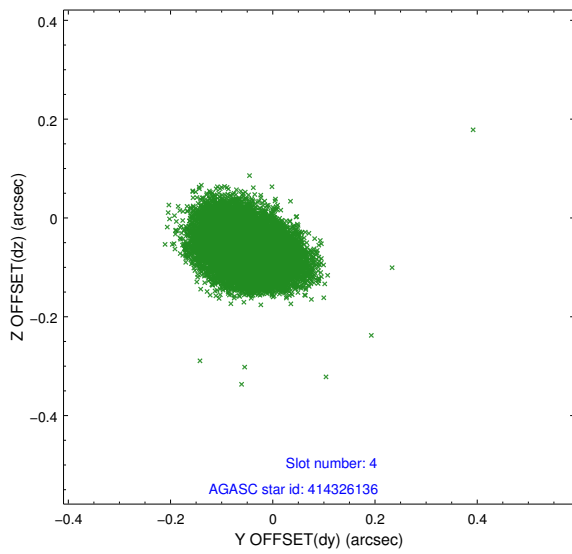
slot	status	id	mag	n_pts	med_dy	med_dz	dr1	dr2	ra	dec	mean_y	mean_z
0	FID	ACIS-I-1	6.99	7241	0.005	0.024	0.004	0.009	0.000000	0.000000	923.69	-842.20
1	FID	ACIS-I-2	6.91	7241	-0.066	0.022	0.004	0.009	0.000000	0.000000	-770.42	-848.77
2	BAD	ACIS-I-4	6.93	3450	-0.119	0.054	0.024	0.064	0.000000	0.000000	2143.21	1057.59
3	GUIDE	413798232	8.28	14478	0.010	0.019	0.076	0.120	309.116117	41.044272	106.97	-1630.29
4	GUIDE	414326136	7.35	14477	-0.049	-0.068	0.067	0.106	308.256176	41.473642	-842.64	997.11
5	GUIDE	414327224	7.98	14475	0.024	0.054	0.066	0.109	309.355439	41.393115	1371.74	-998.42
6	GUIDE	414329112	9.19	14459	0.094	0.046	0.105	0.171	307.717084	41.328937	-2318.98	1456.88
7	GUIDE	414323216	9.21	14464	-0.083	-0.049	0.090	0.147	309.119698	42.107837	2378.29	1452.23

2.4 Star Slots

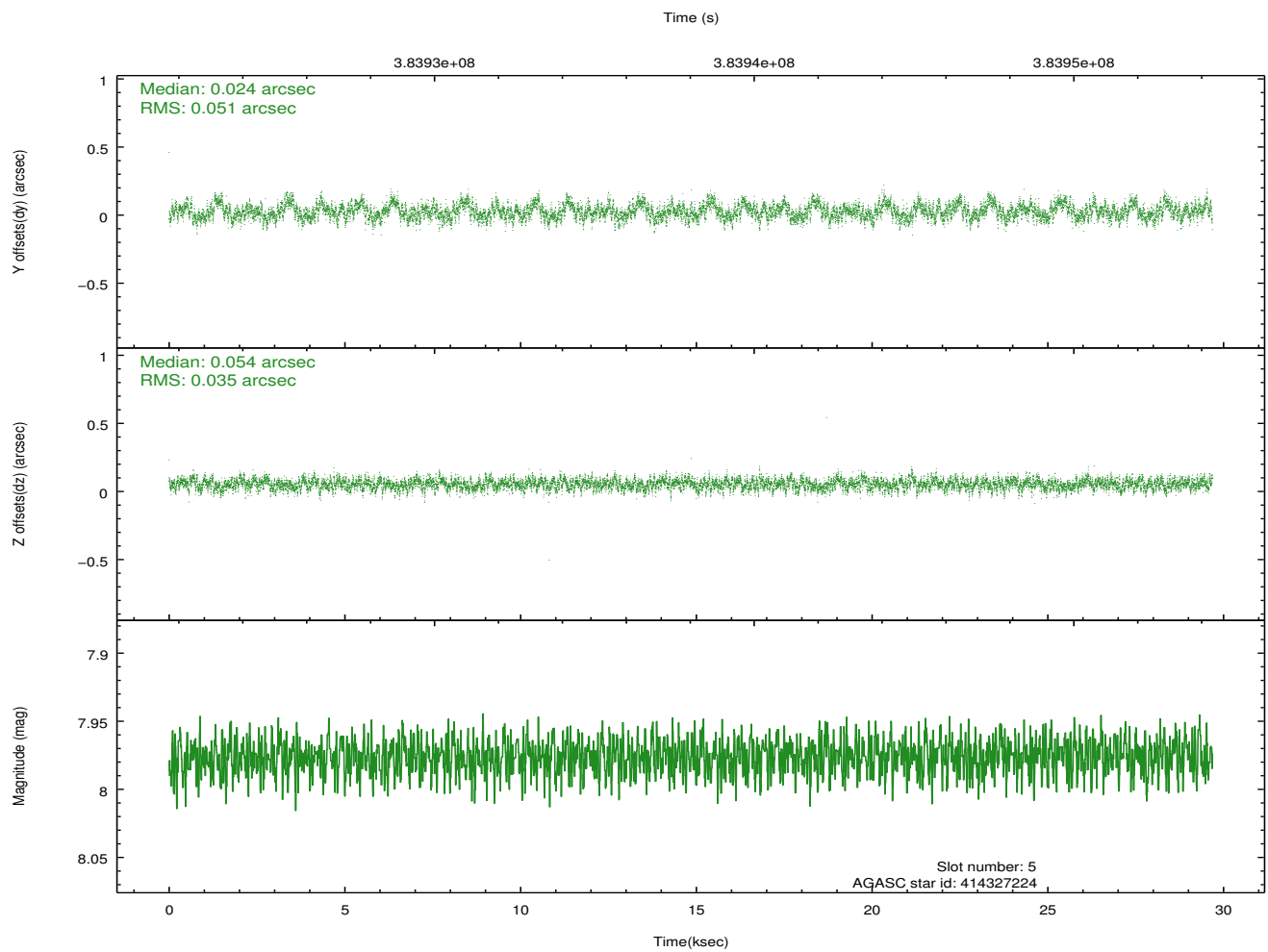
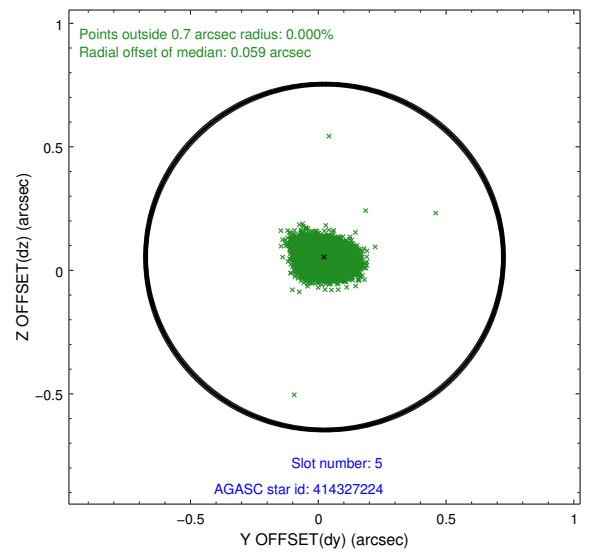
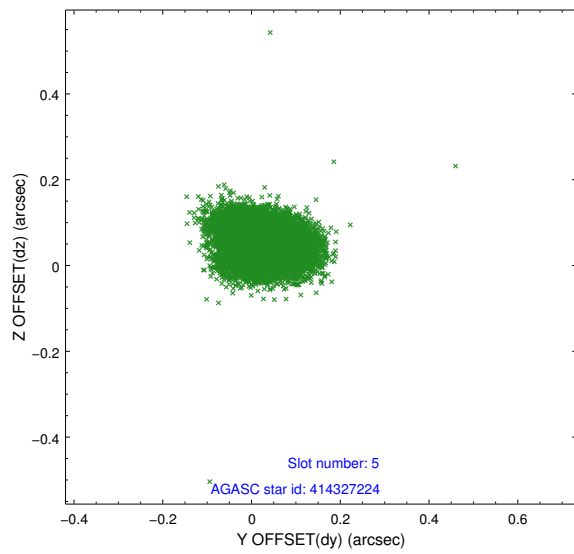
2.4.1 Slot 3



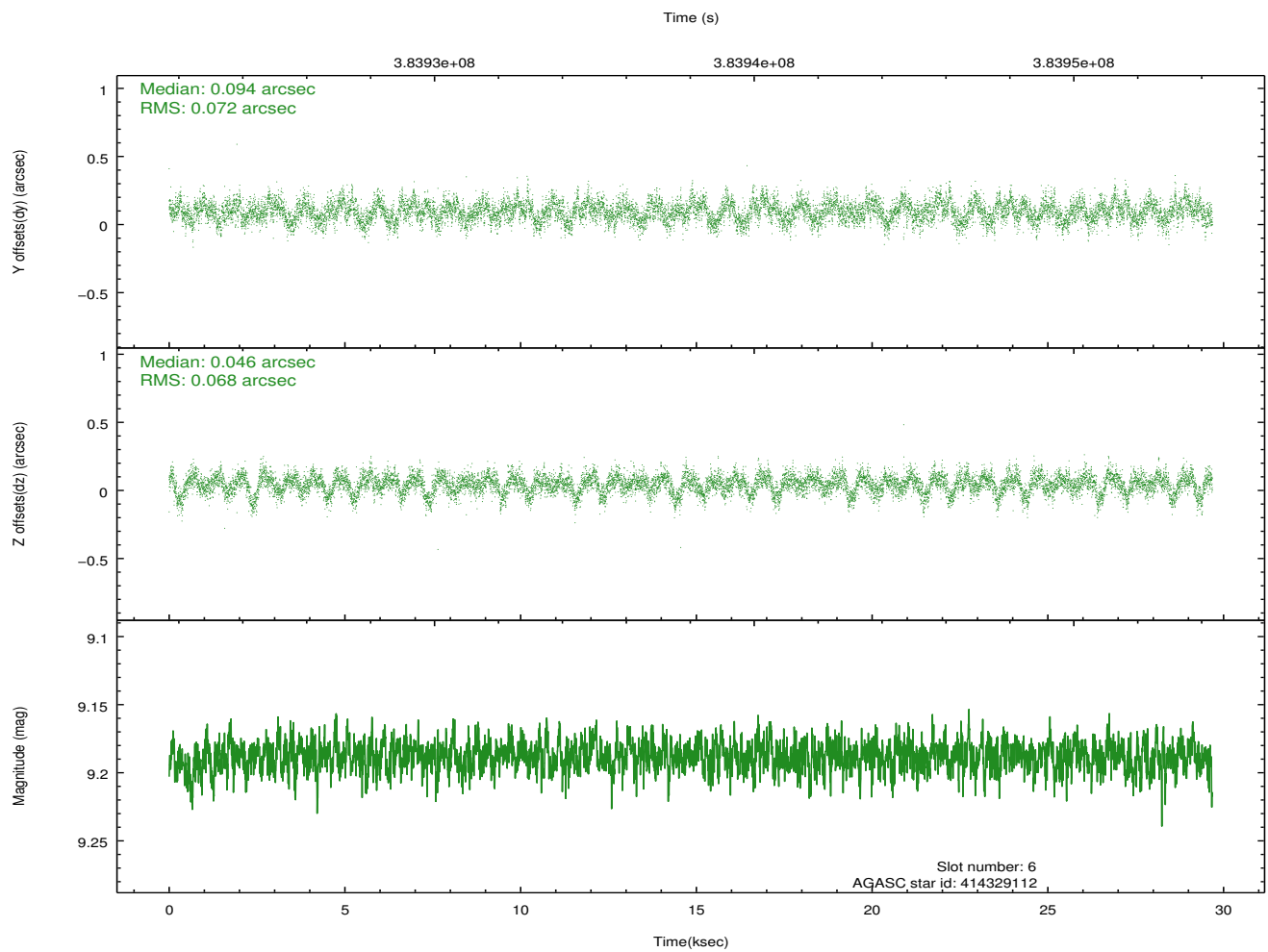
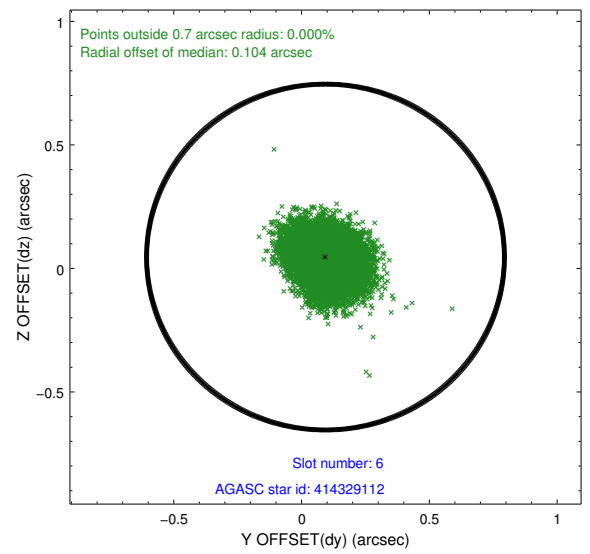
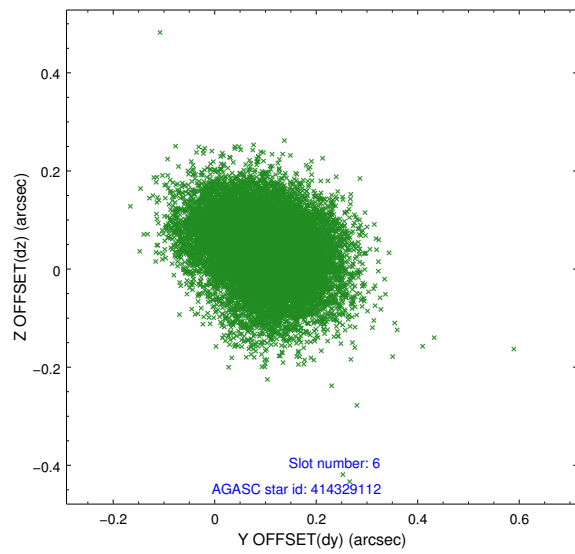
2.4.2 Slot 4



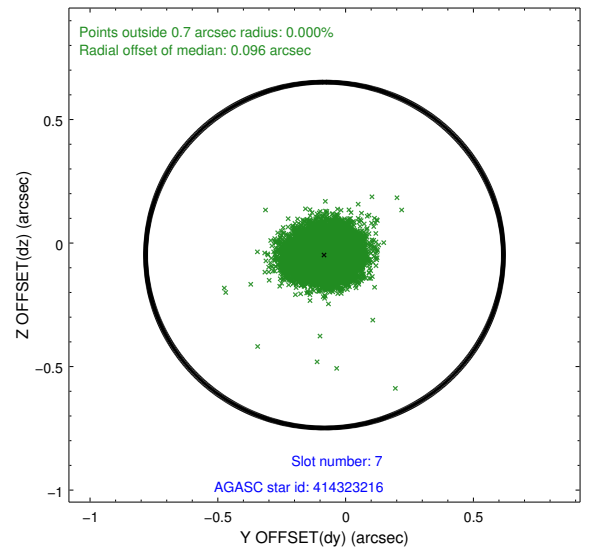
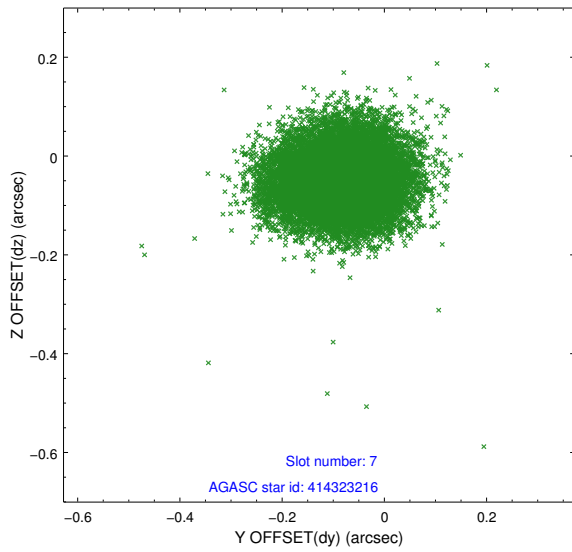
2.4.3 Slot 5



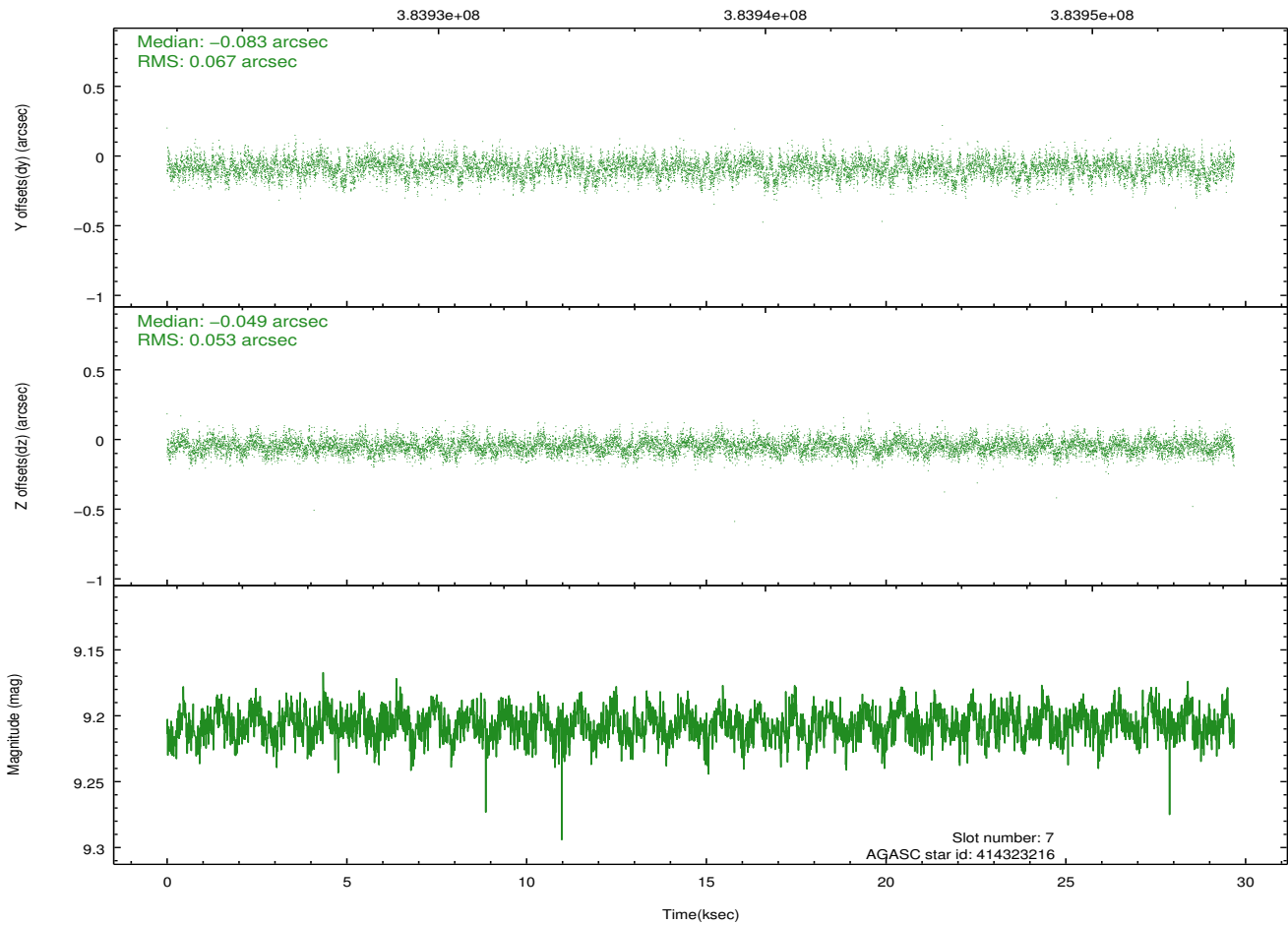
2.4.4 Slot 6



2.4.5 Slot 7

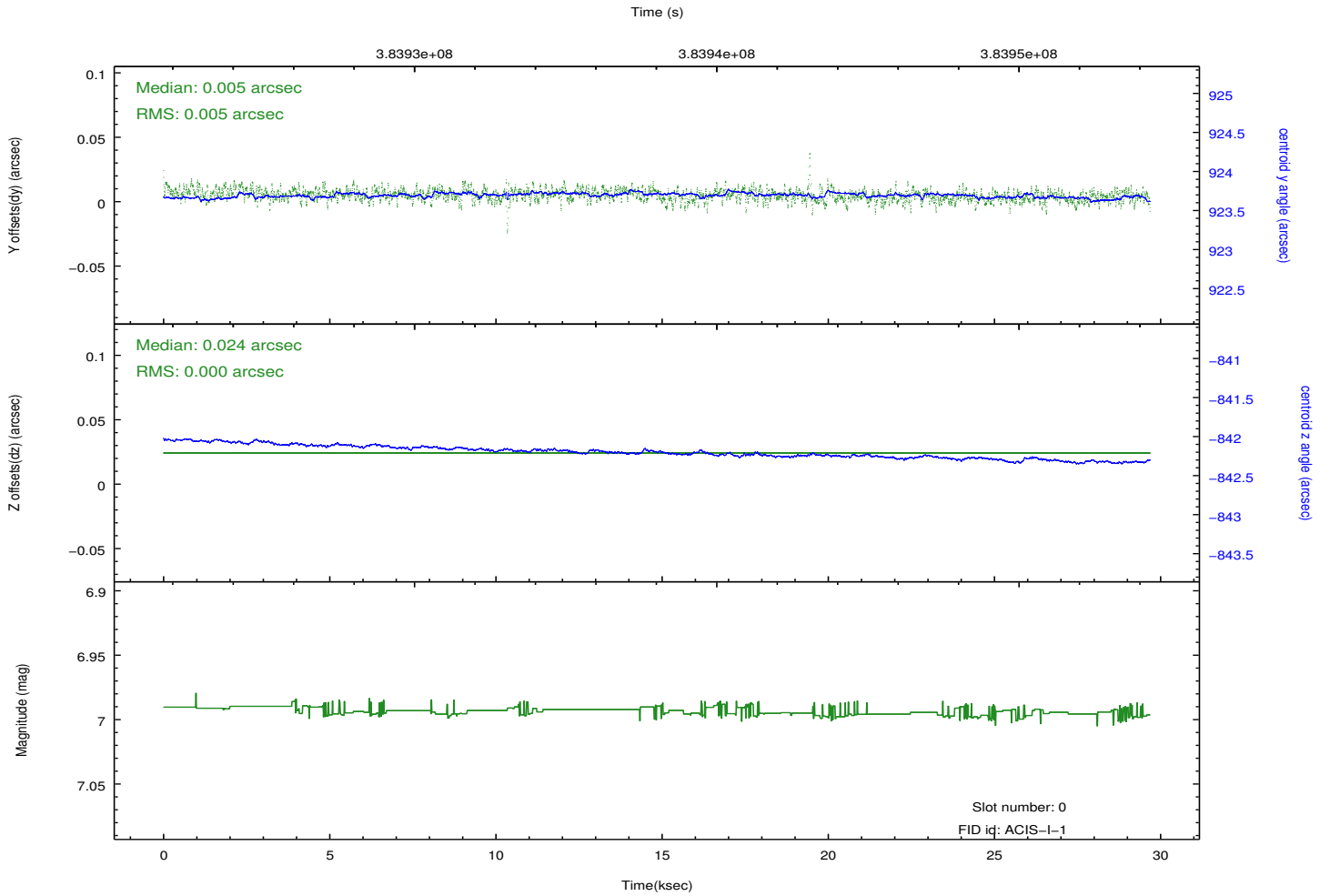
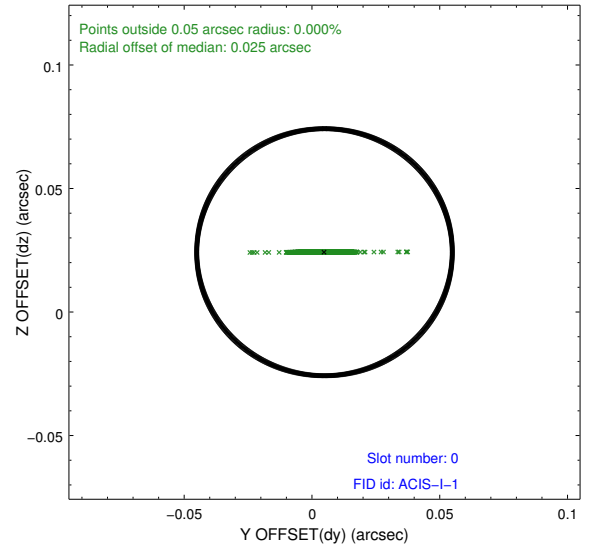
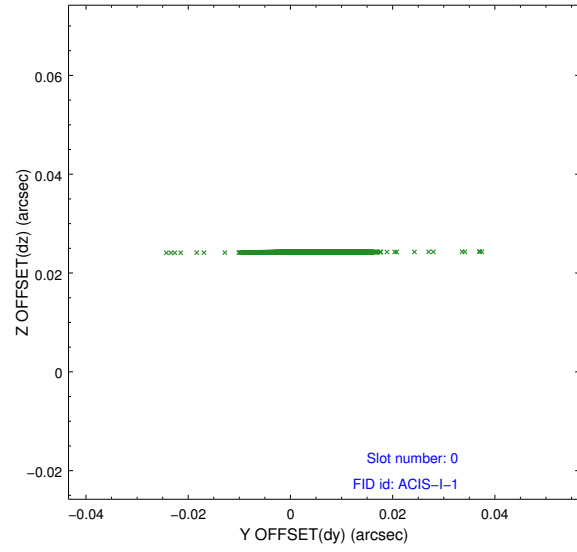


Time (s)

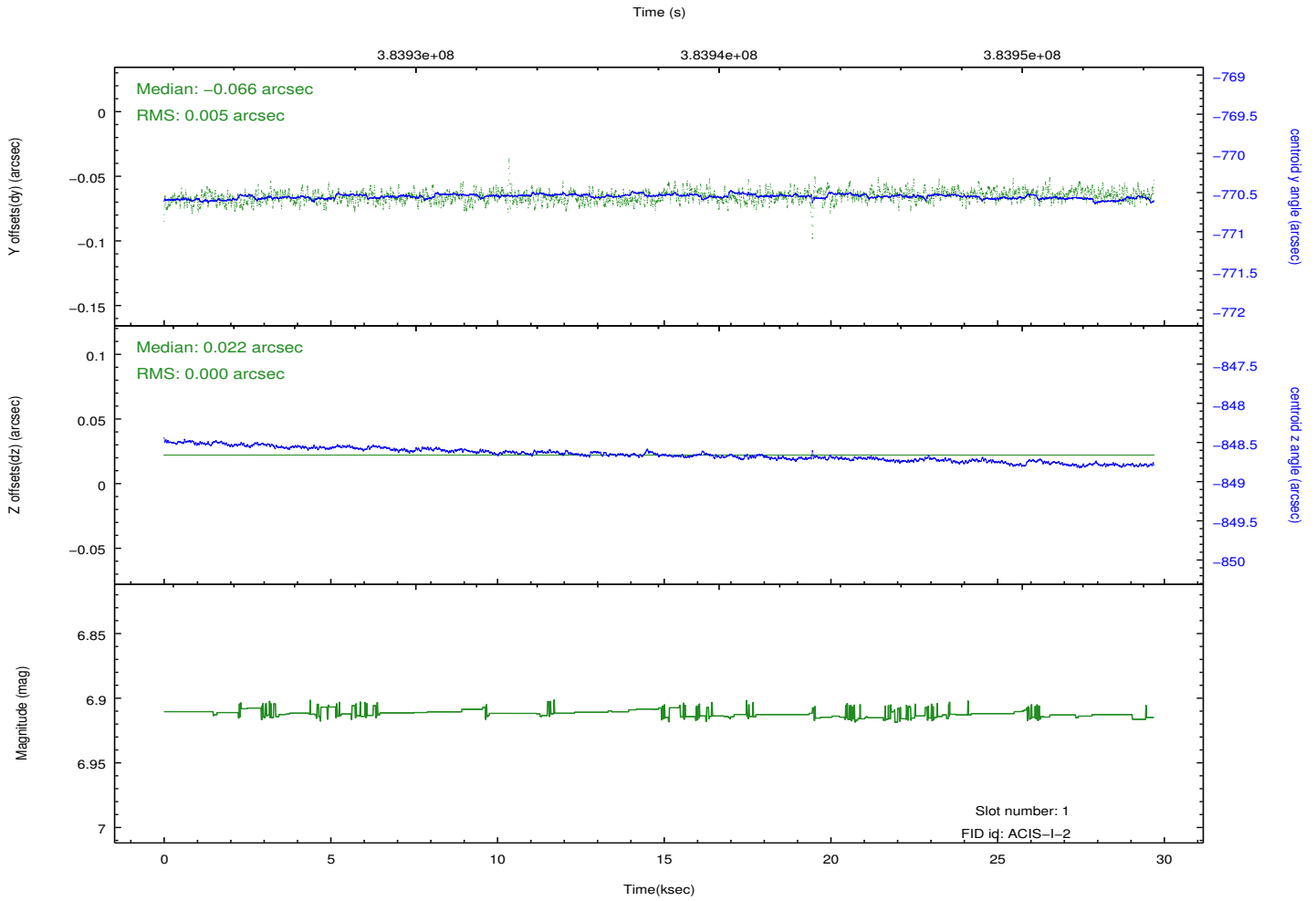
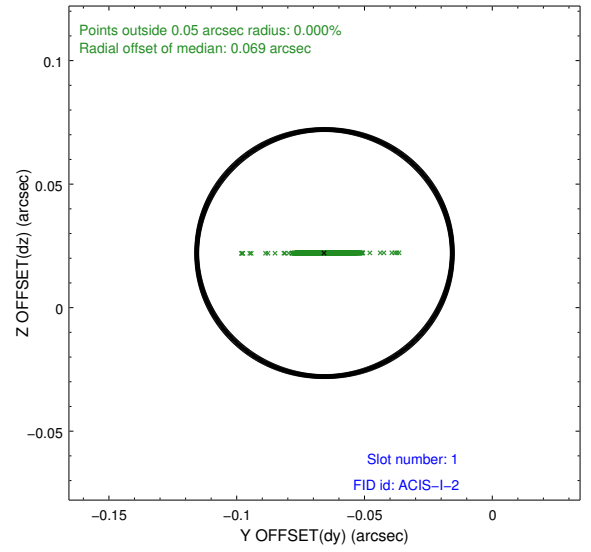
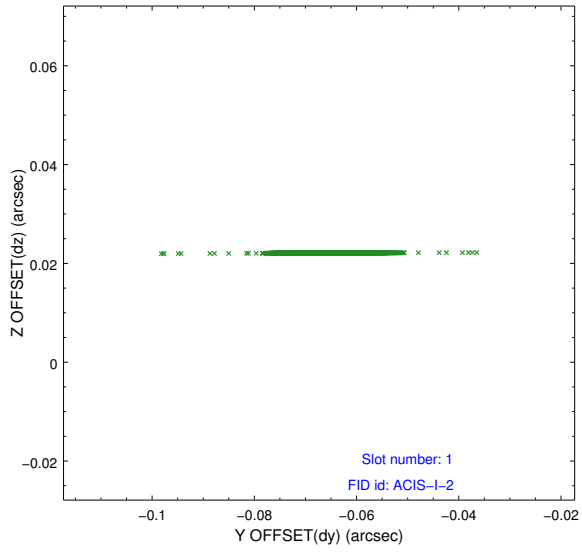


2.5 FID Slots

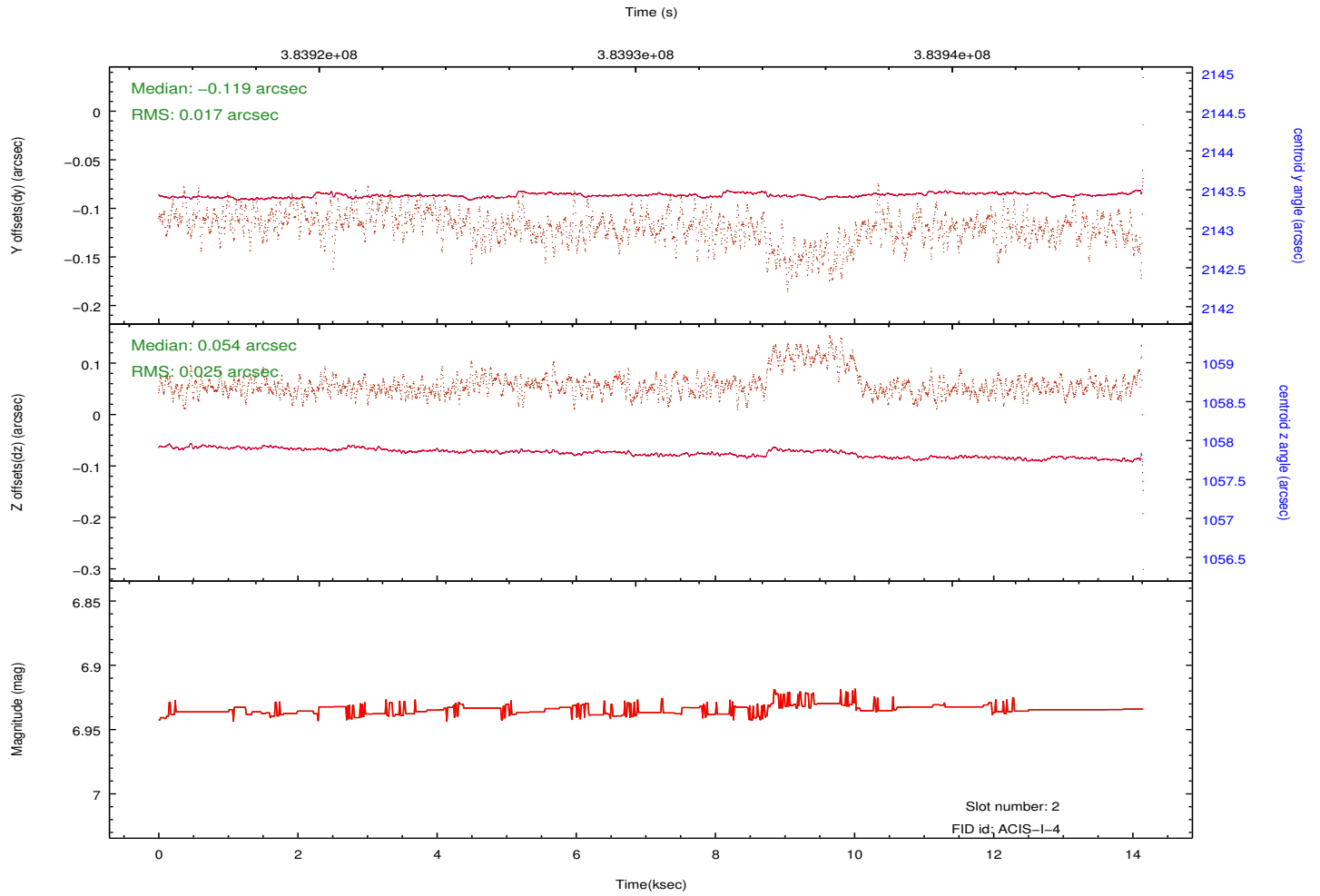
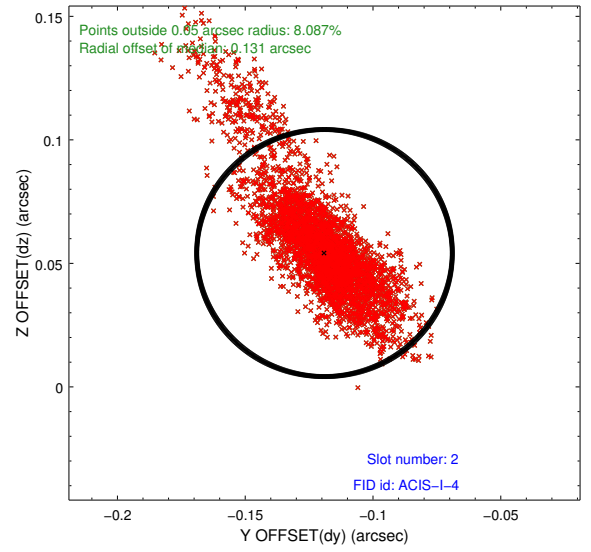
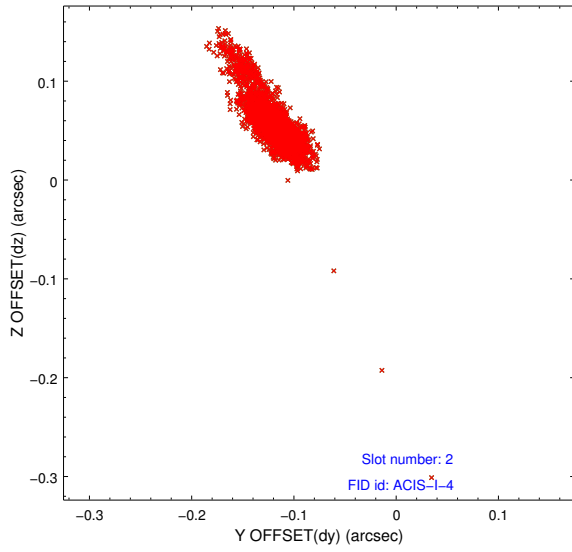
2.5.1 Slot 0



2.5.2 Slot 1



2.5.3 Slot 2



A Summary

A.1 Status

V&V Scientist	Jen Lauer
V&V Date (YYYY-MM-DD)	2012.07.03
V&V Edition	1
V&V Disposition and Status	OK
V&V Charge Time	29.254289131403

A.2 Comments

Roll preference met.

=====

The fid light in slot 2 was automatically removed from the aspect solution due to poor data quality. The aspect solution is improved by the removal of this fid light from the solution.