

V&V Reference Report

L2 ASCDS Version : 8.4.5

Observation 11177 - L2 Version 2
Chandra X-Ray Center

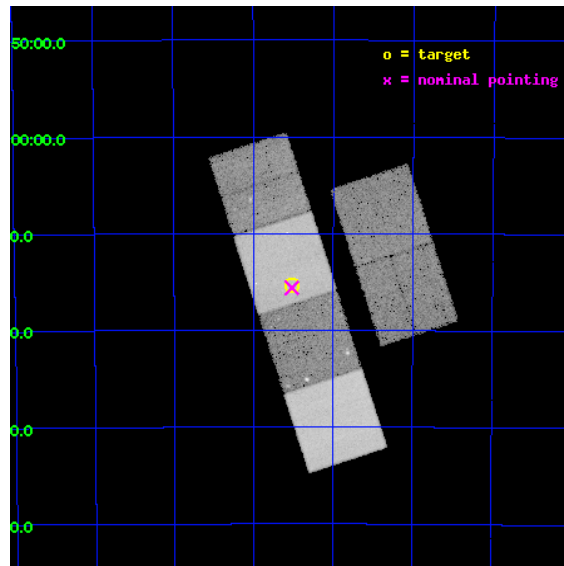
L2 Processing Date : Jun 24 2012

Contents

1	Front	2
2	OBI	3
2.1	OBI	3
2.1.1	Images	3
2.1.2	Bias	3
2.1.3	Parameters	4
2.1.4	Events	4
2.2	Compared Parameters	5
2.3	Aspect	6
2.4	Star Slots	9
2.4.1	Slot 3	9
2.4.2	Slot 4	10
2.4.3	Slot 5	11
2.4.4	Slot 6	12
2.4.5	Slot 7	13
2.5	FID Slots	14
2.5.1	Slot 0	14
2.5.2	Slot 1	15
2.5.3	Slot 2	16
A	Summary	17
A.1	Status	17
A.2	Comments	17

1 Front

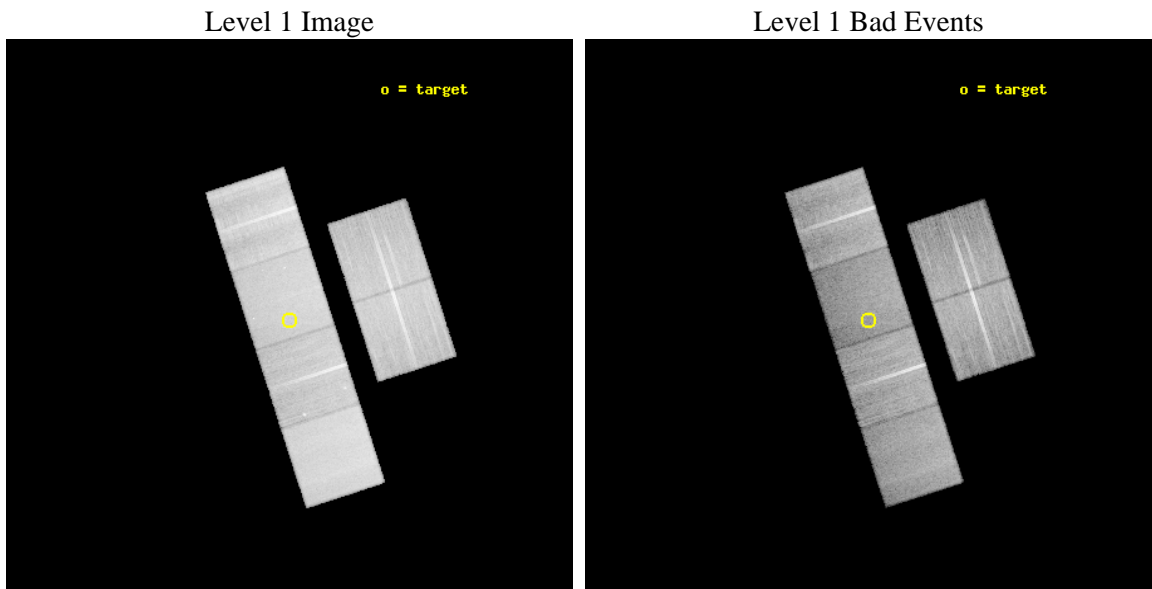
seq_num	501262	Sequence number
obs_id	11177	Observation id
title	An In-Depth Study of the Nearest Gamma-Ray Bursts	Proposal title
observer	Prof Alicia Soderberg	Principal investigator
object	GRB100316d	Source name
dtycycle	0	
cycle	P	events from which exps? Prim/Second/Both
ra_targ	107.627625	Observer's specified target RA [deg]
dec_targ	-56.255472	Observer's specified target Dec [deg]
ra_nom	107.6296811316	Nominal RA [deg]
dec_nom	-56.260175121954	Nominal Dec [deg]
roll_nom	252.01416556495	Nominal Roll [deg]
revision	2	Processing version of data
ontime	30044.691335022	Sum of GTIs [s]
livetime	29664.247362597	Livetime [s]
ontime2	30041.491514146	Sum of GTIs [s]
ontime3	30044.568215013	Sum of GTIs [s]
ontime5	30044.650295019	Sum of GTIs [s]
ontime6	30034.886403501	Sum of GTIs [s]
ontime7	30044.691335022	Sum of GTIs [s]
ontime8	30044.527175009	Sum of GTIs [s]
l2events	359925	Number of level 2 events



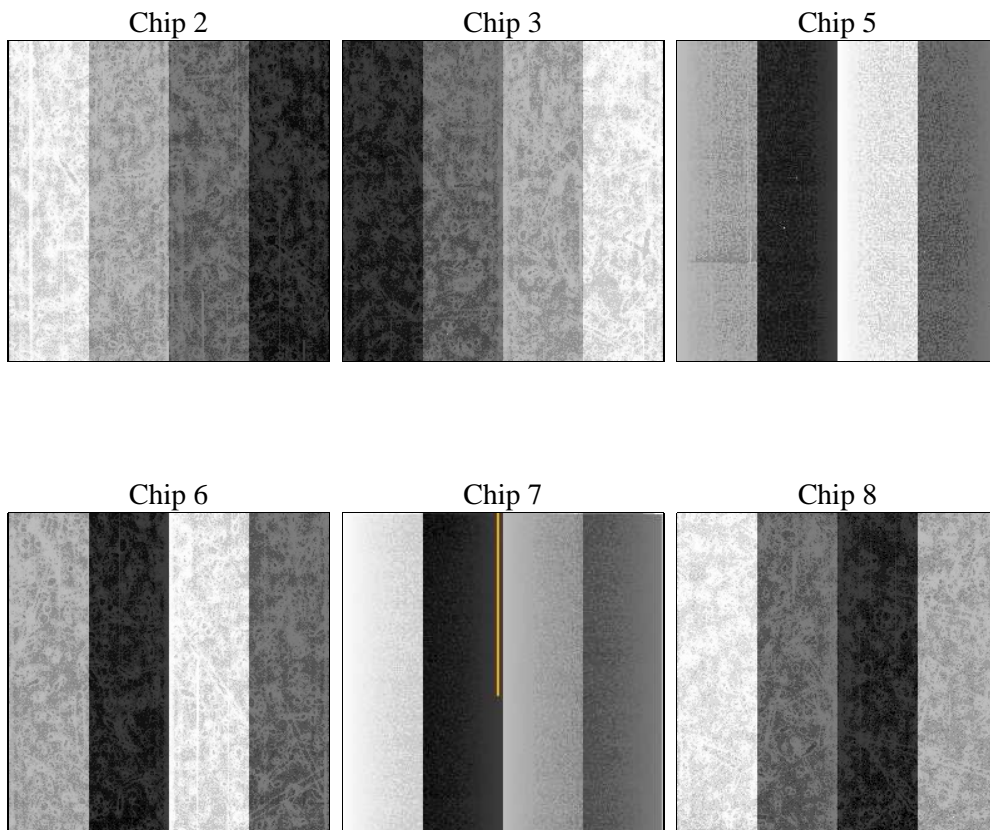
2 OBI

2.1 OBI

2.1.1 Images



2.1.2 Bias



2.1.3 Parameters

obi_num	0	Obi number	sched_exp_time	30000.000000	[s] Scheduled observation exposure time
ascdsver	8.4.5	Processing system revision	ontime	30044.691335022	Sum of GTIs [s]
caldbver	4.4.10	 	ontime2	30041.491514146	Sum of GTIs [s]
date	2012-06-24T21:08:12	Date and time of file creation	ontime3	30044.568215013	Sum of GTIs [s]
revision	2	Processing version of data	ontime5	30044.650295019	Sum of GTIs [s]
			ontime6	30034.886403501	Sum of GTIs [s]
			ontime7	30044.691335022	Sum of GTIs [s]
			ontime8	30044.527175009	Sum of GTIs [s]
			l1events	1564476	Number of level 1 events

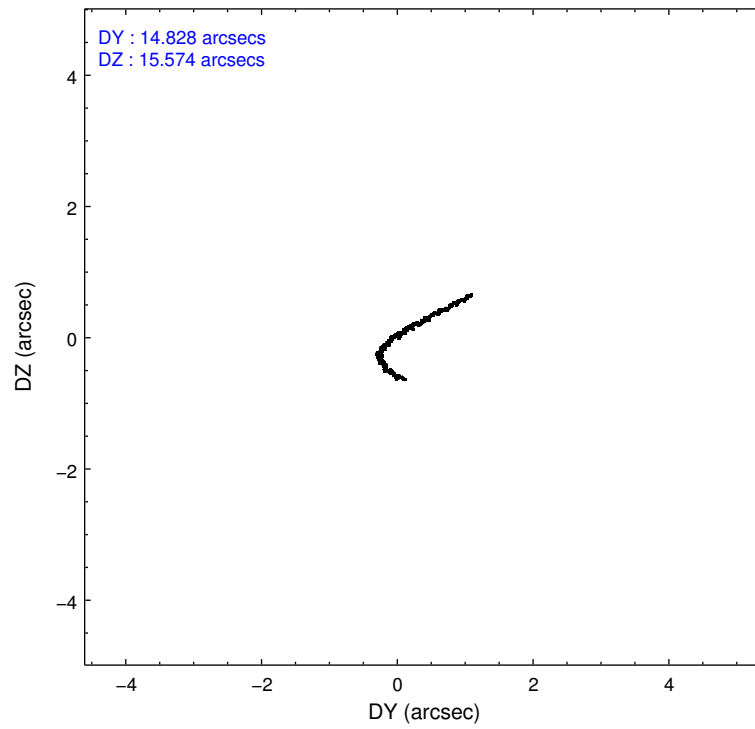
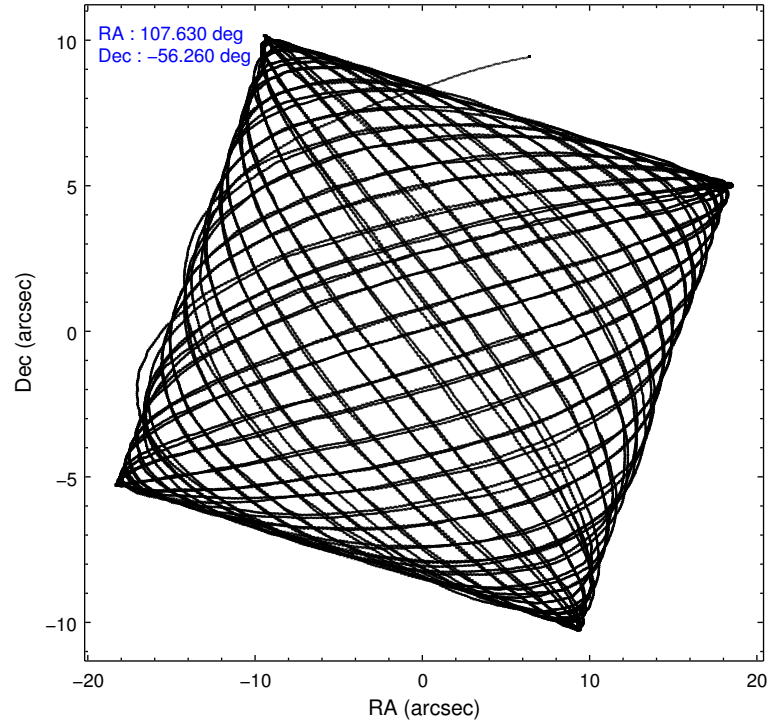
2.1.4 Events

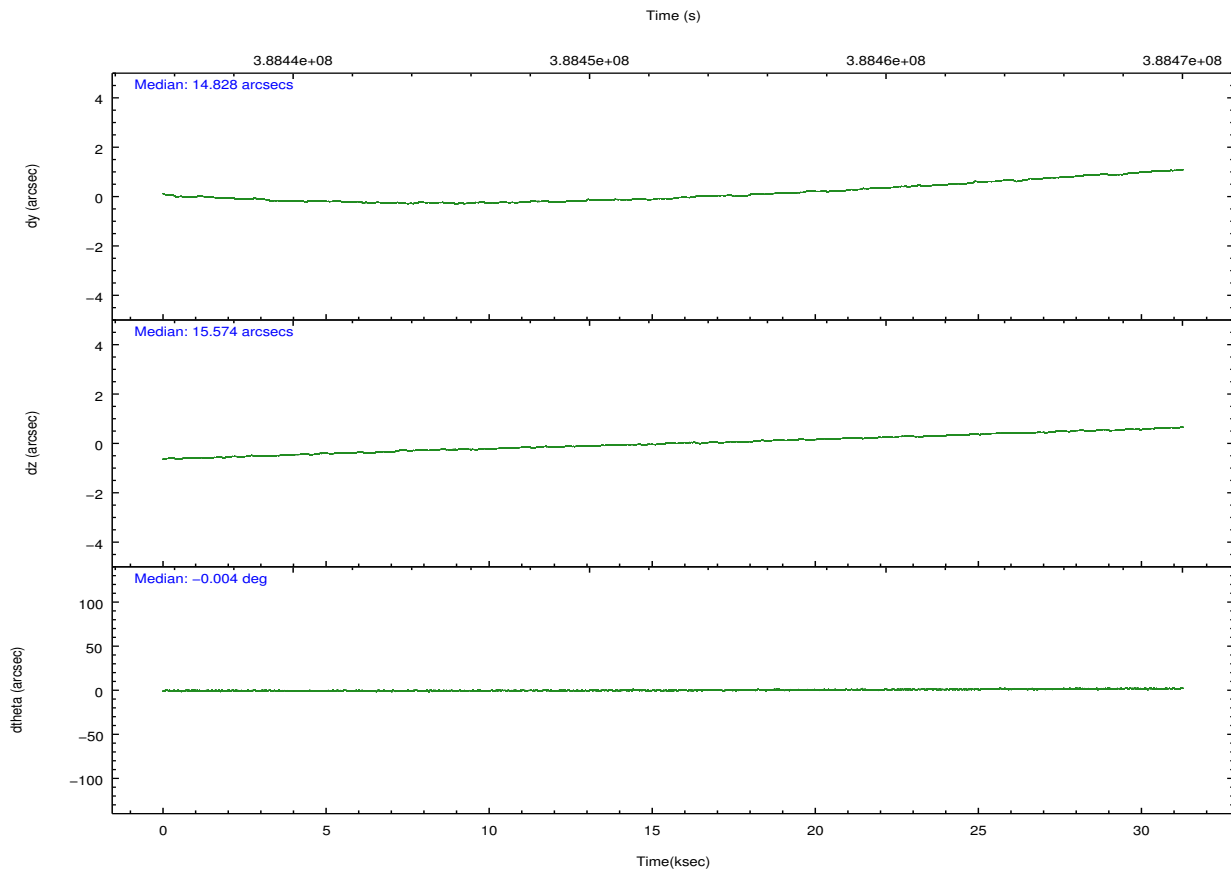
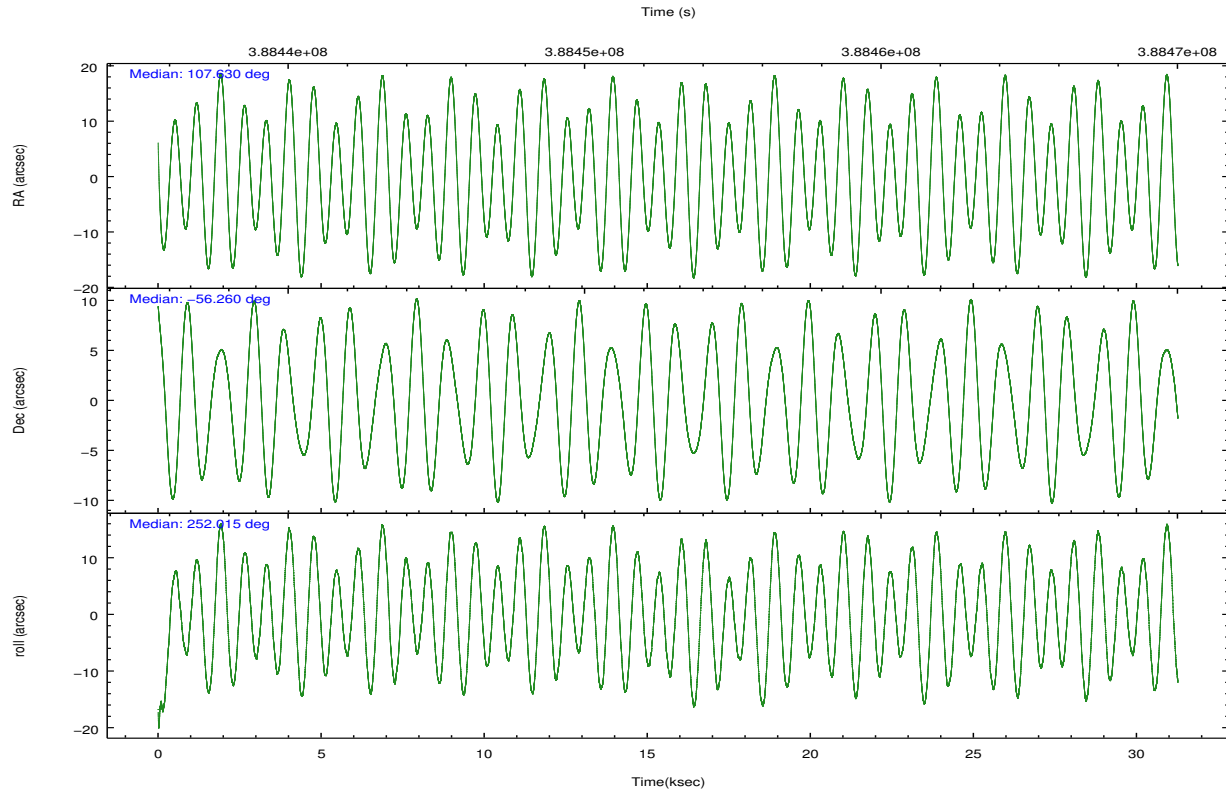
	ccd 2	ccd 3	ccd 5	ccd 6	ccd 7	ccd 8		ccd 2	ccd 3	ccd 5	ccd 6	ccd 7	ccd 8
level 1 events	237201	215761	326385	227444	269279	288406	grade 0 events	8296	7655	9901	9737	11134	22408
rejected events	213876	193825	168591	201504	147389	214445		3%	3%	3%	4%	4%	7%
rejected %	90%	89%	51%	88%	54%	74%	grade 1 events	130	143	581	127	358	245
								0%	0%	0%	0%	0%	0%
							grade 2 events	5667	4778	48364	5654	25038	17365
								2%	2%	14%	2%	9%	6%
							grade 3 events	2370	2483	6247	2568	10818	7460
								0%	1%	1%	1%	4%	2%
							grade 4 events	2469	2499	6037	2572	10819	7126
								1%	1%	1%	1%	4%	2%
							grade 5 events	8574	9480	25319	9934	27857	14298
								3%	4%	7%	4%	10%	4%
							grade 6 events	4529	4529	87279	5415	64108	19621
								1%	2%	26%	2%	23%	6%
							grade 7 events	205166	184194	142657	191437	119147	199883
								86%	85%	43%	84%	44%	69%

2.2 Compared Parameters

Parameter	Planned	Actual	Parameter	Planned	Actual
Instrument	ACIS	ACIS	Obspar format version number	7	7
Detector	ACIS-235678	ACIS-235678	Obspar file type	PREDICTED	ACTUAL
Grating	NONE	NONE	Obspar update status	NONE	UPDATED
Data mode	VFAINT	VFAINT	CCD I0 on	N	N
Observation mode	POINTING	POINTING	CCD I1 on	N	N
[deg] Pointing RA	107.618785	107.6296811315985	CCD I2 on	O1	Y
[deg] Pointing Dec	-56.233520	-56.26017512195354	CCD I3 on	O2	Y
[deg] Pointing Roll	251.848486	252.0141655649523	CCD S0 on	N	N
[mm] SIM focus pos	-0.684267	-0.6828225247311905	CCD S1 on	Y	Y
[mm] SIM defocus	0	0.001444936568705701	CCD S2 on	Y	Y
[mm] SIM translation stage pos	-190.132523	-190.1400660498719	CCD S3 on	Y	Y
[mm] SIM translation stage offset	0	0.00754346686406393	CCD S4 on	Y	Y
[s] Observation start time (MET)	388438457.184000	388436339.01838	CCD S5 on	N	N
Observation start date	2010-04-23T19:33:11	2010-04-23T18:58:59	Number of optional ACIS chips dropped	0	0
[s] Observation end time (MET)	388468457.184000	388469185.65755	On-chip summing requested	N	N
Observation end date	2010-04-24T03:53:11	2010-04-24T04:06:25	Subarray requested	NONE	NONE
Read mode	TIMED	TIMED	Alternating exposures requested	N	N
			[s] Primary exposure time	0.000000	3.2

2.3 Aspect



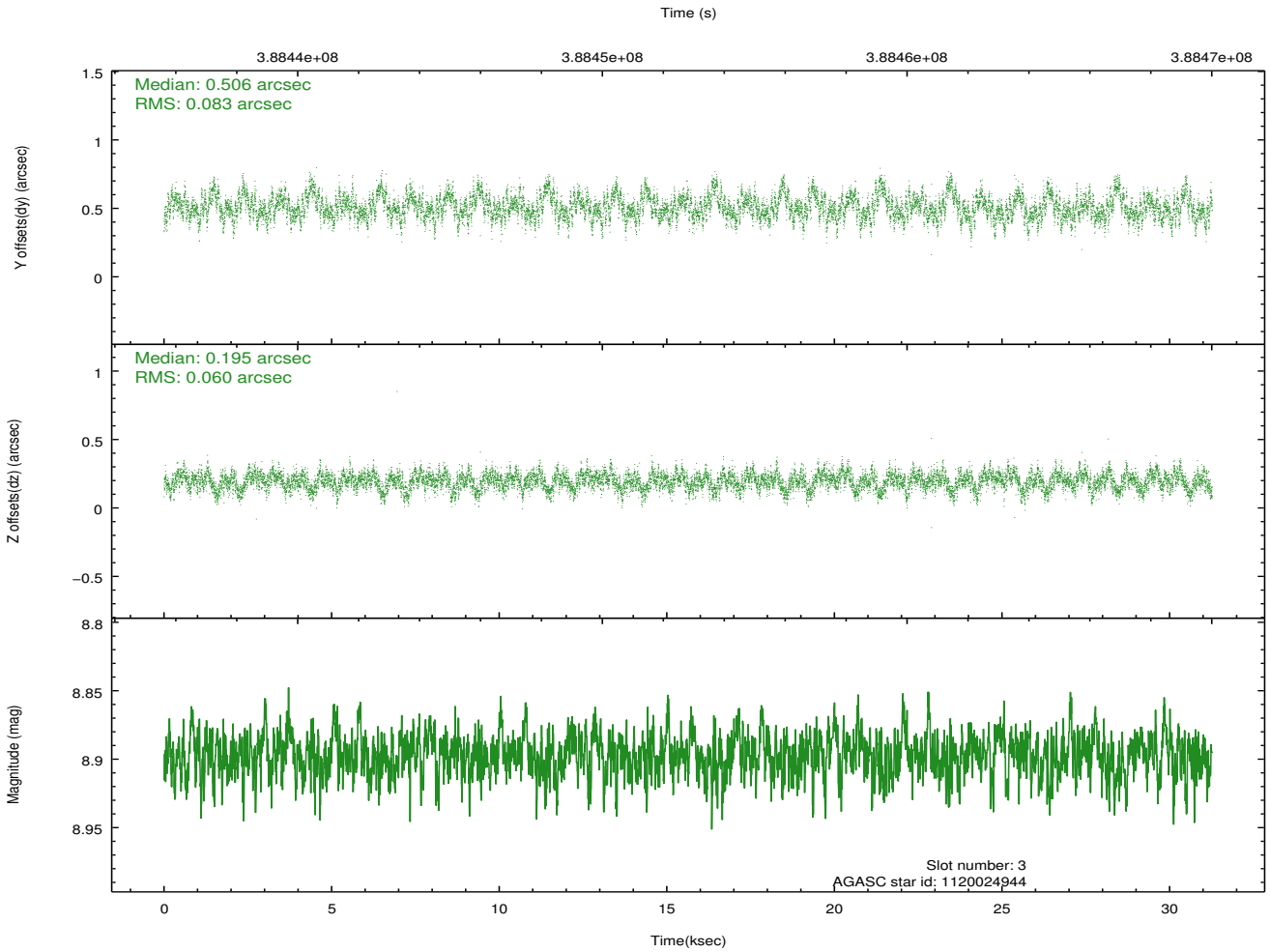
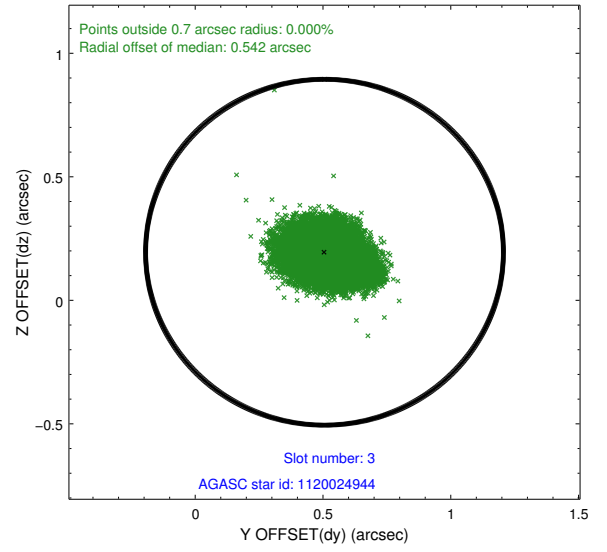
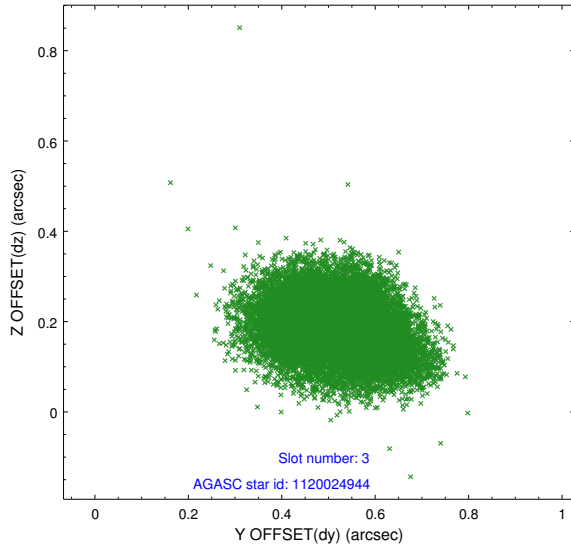


Slot Statistics

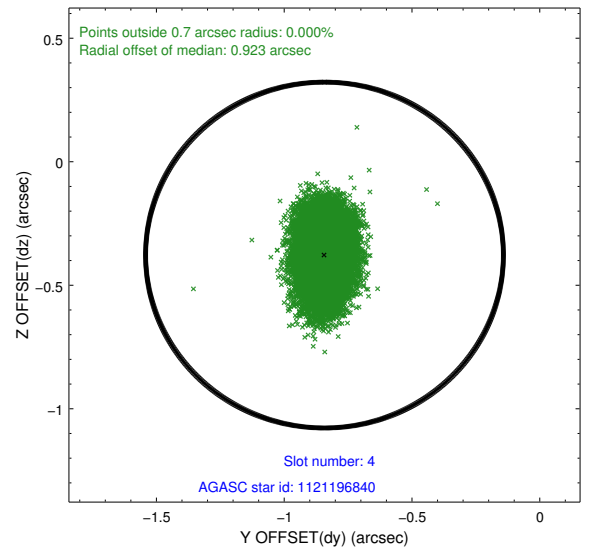
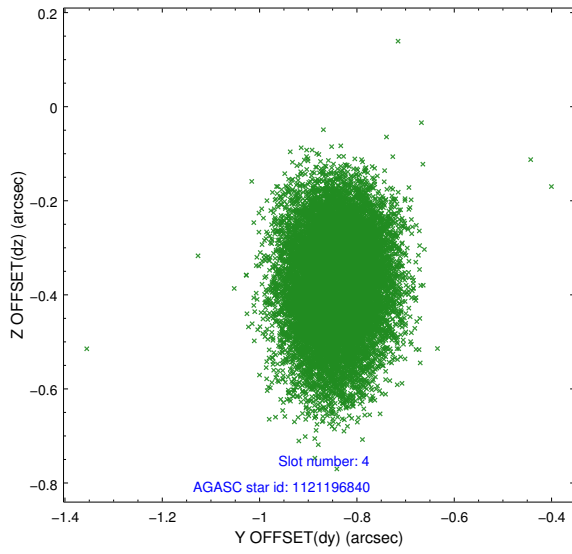
slot	status	id	mag	n_pts	med_dy	med_dz	dr1	dr2	ra	dec	mean_y	mean_z
0	FID	ACIS-S-2	6.92	7627	-0.093	-0.027	0.010	0.017	0.000000	0.000000	-768.03	-1737.00
1	FID	ACIS-S-4	7.01	7626	0.209	0.052	0.011	0.040	0.000000	0.000000	2145.50	171.51
2	FID	ACIS-S-5	7.03	7625	-0.146	-0.017	0.014	0.038	0.000000	0.000000	-1820.85	165.16
3	GUIDE	1120024944	8.90	15238	0.506	0.195	0.109	0.181	106.619042	-56.645754	2041.40	-1413.53
4	GUIDE	1121196840	9.33	15237	-0.842	-0.378	0.119	0.204	106.760564	-55.770992	-1031.26	-2167.19
5	GUIDE	1121199304	8.40	15253	0.283	0.090	0.106	0.153	107.437468	-55.725843	-1621.41	-918.52
6	GUIDE	1121727576	8.31	15248	-0.092	-0.042	0.074	0.117	108.380481	-56.724378	1218.37	1982.64
7	GUIDE	1121719544	9.31	15226	0.133	0.133	0.100	0.160	107.996147	-56.906928	2074.87	1461.01

2.4 Star Slots

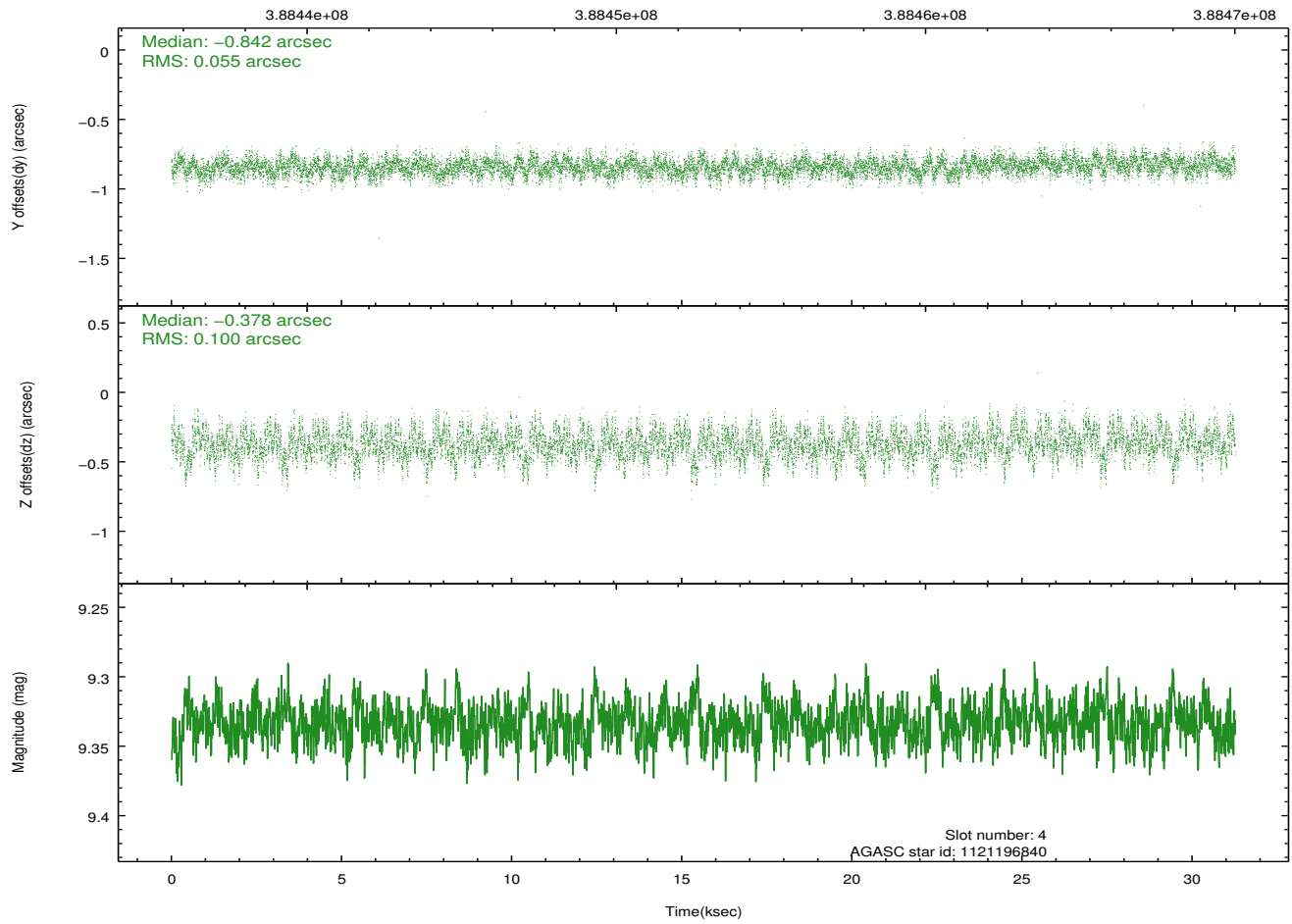
2.4.1 Slot 3



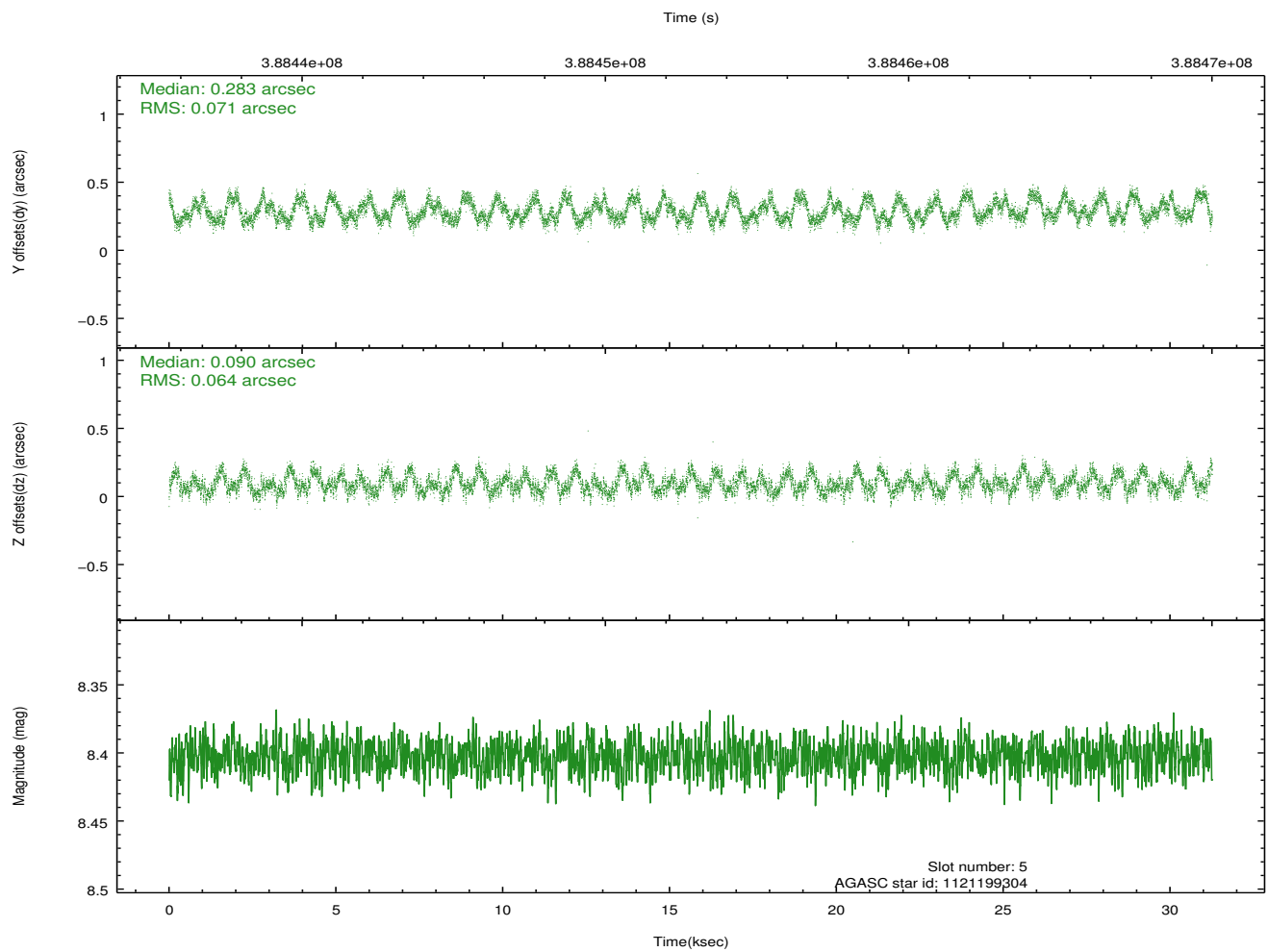
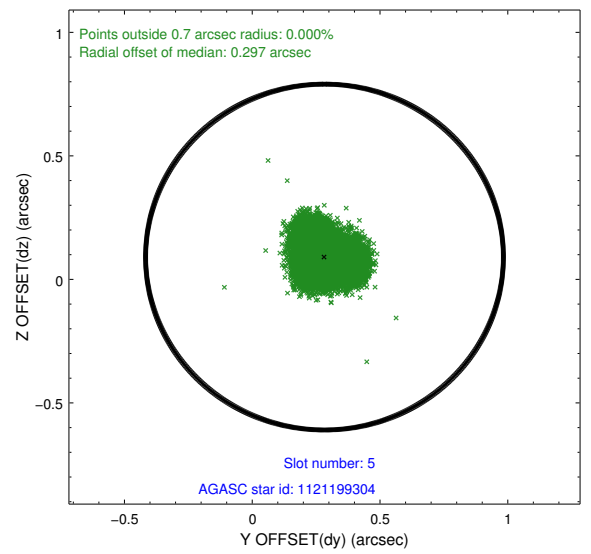
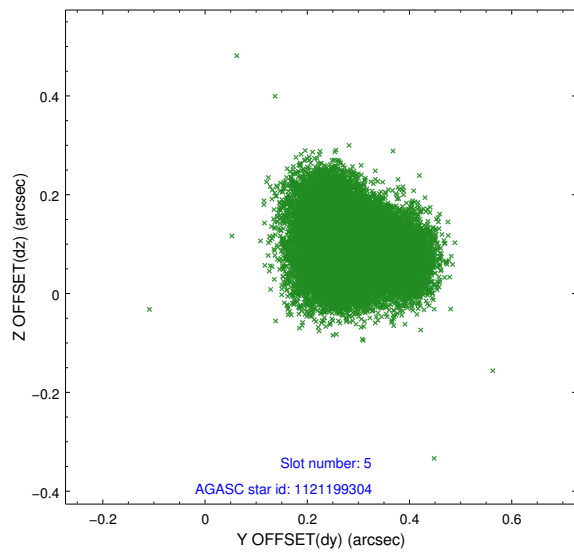
2.4.2 Slot 4



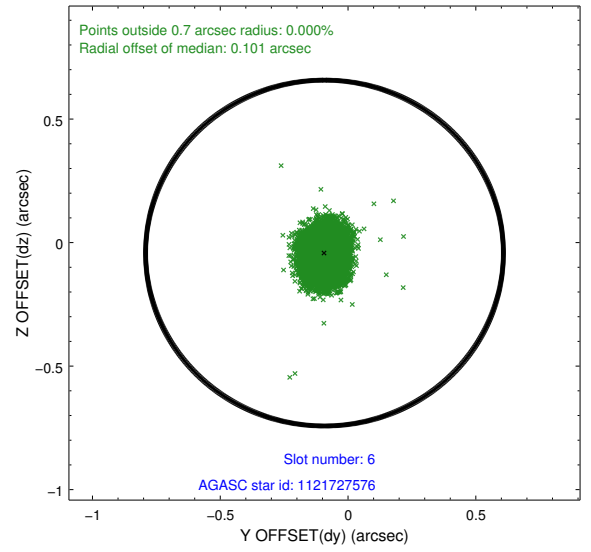
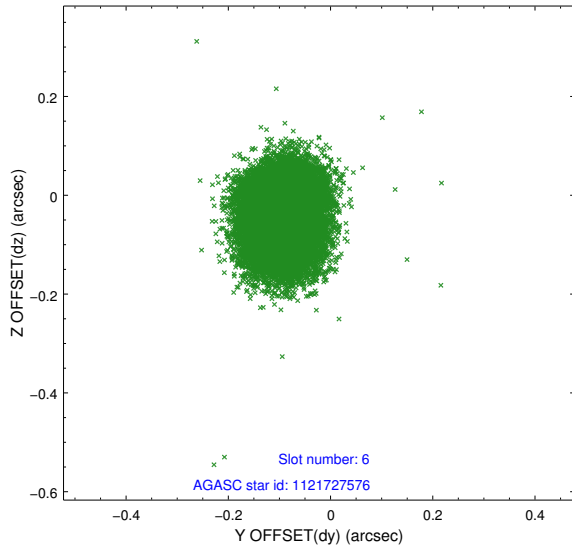
Time (s)



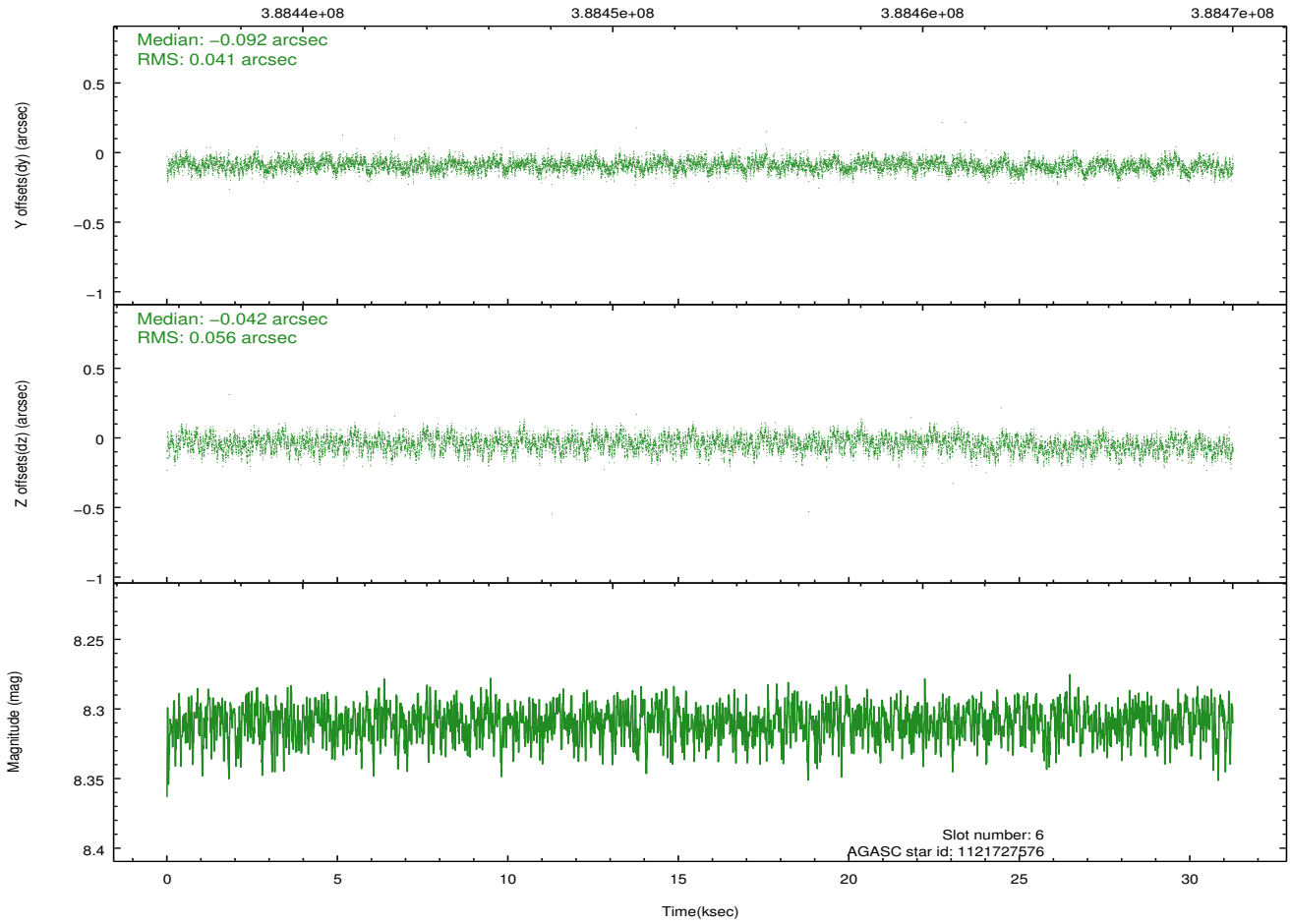
2.4.3 Slot 5



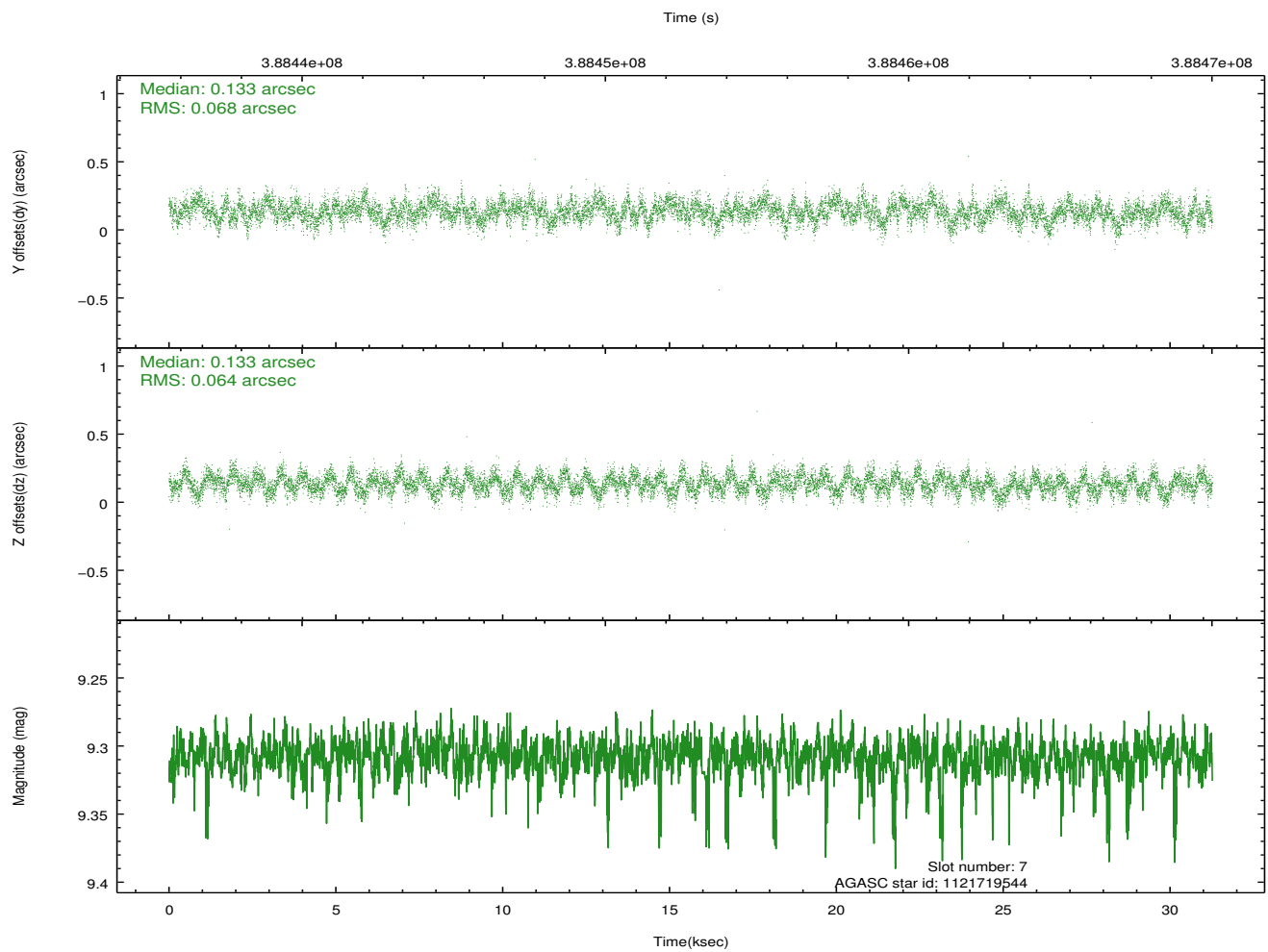
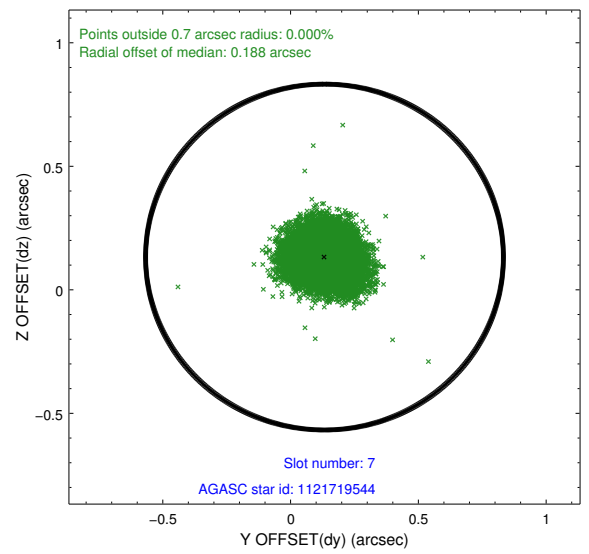
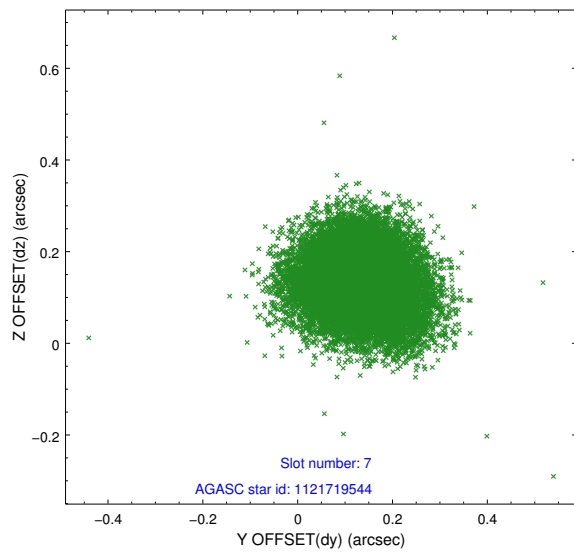
2.4.4 Slot 6



Time (s)

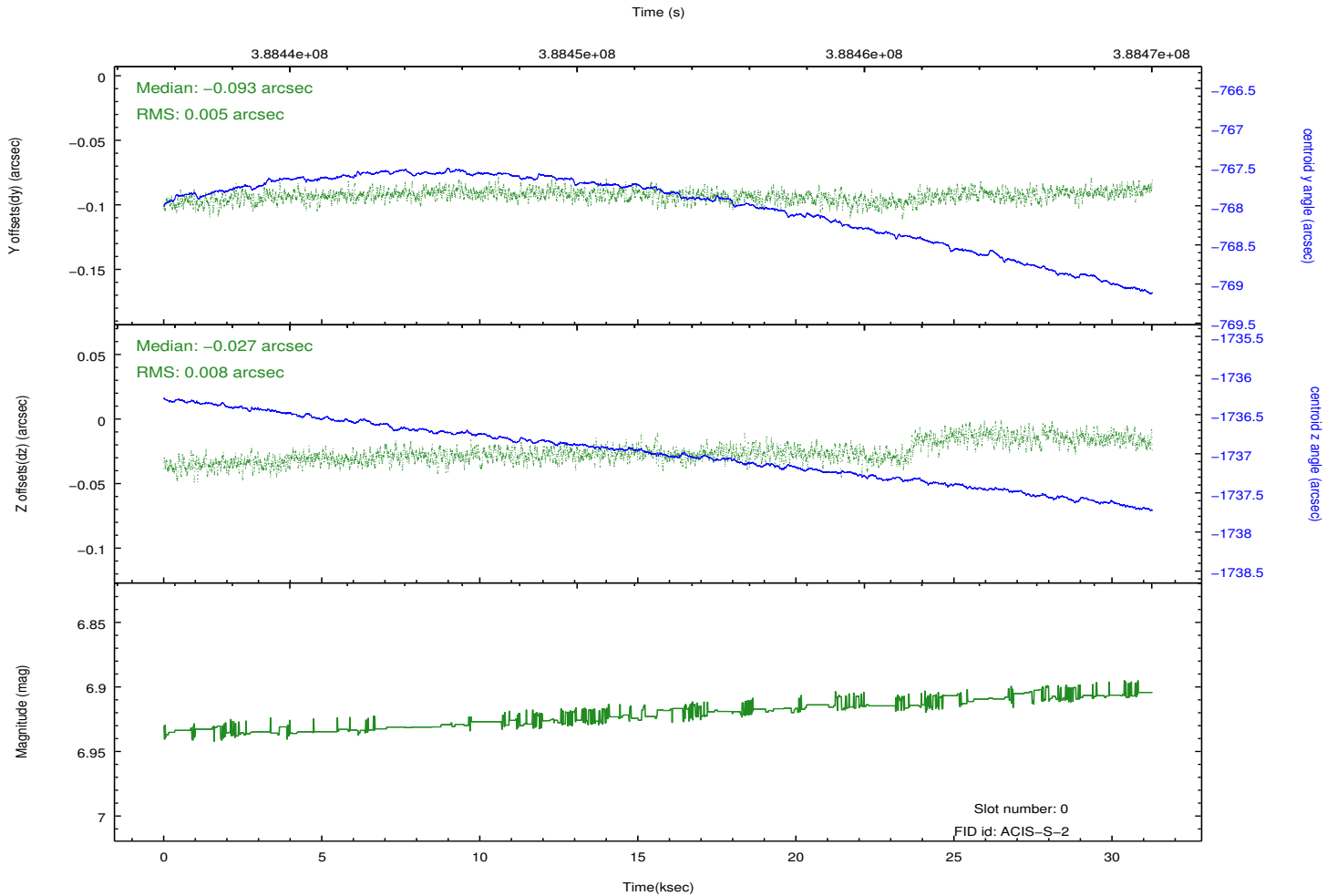
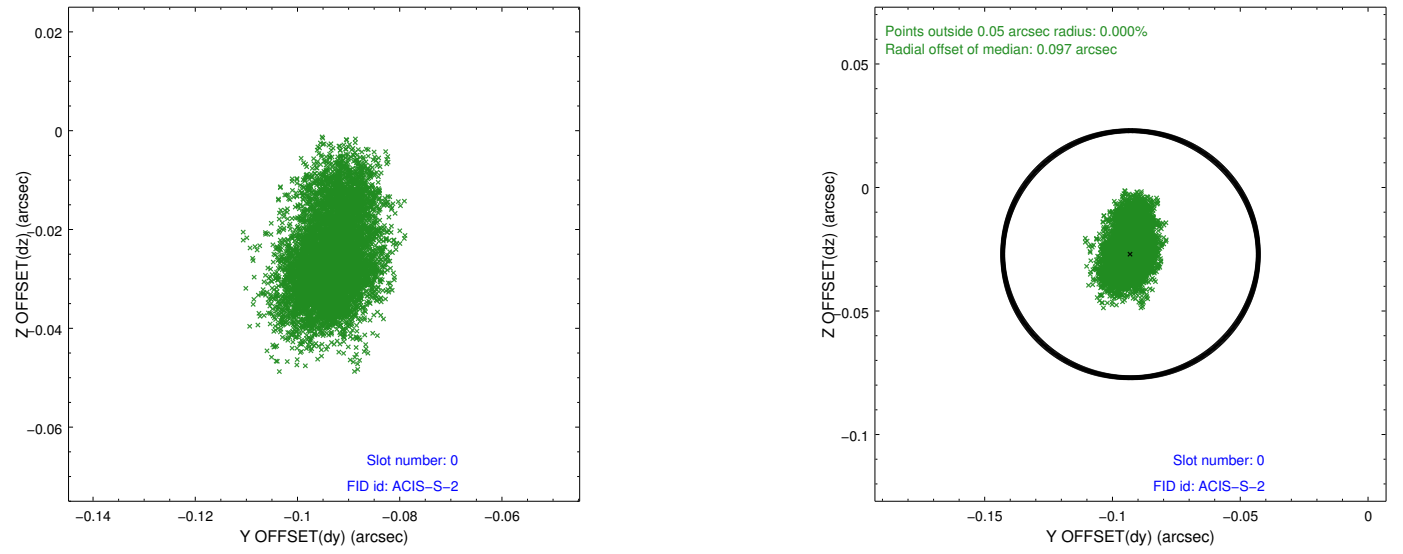


2.4.5 Slot 7

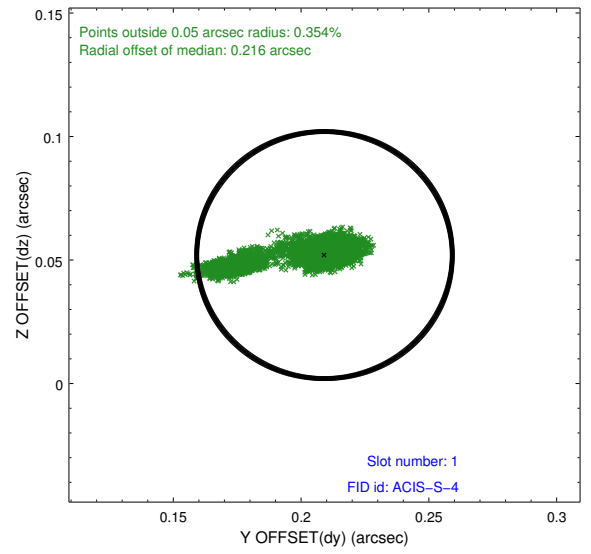
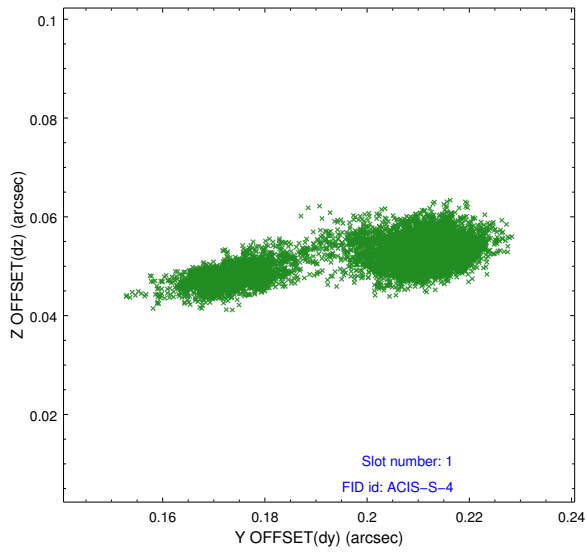


2.5 FID Slots

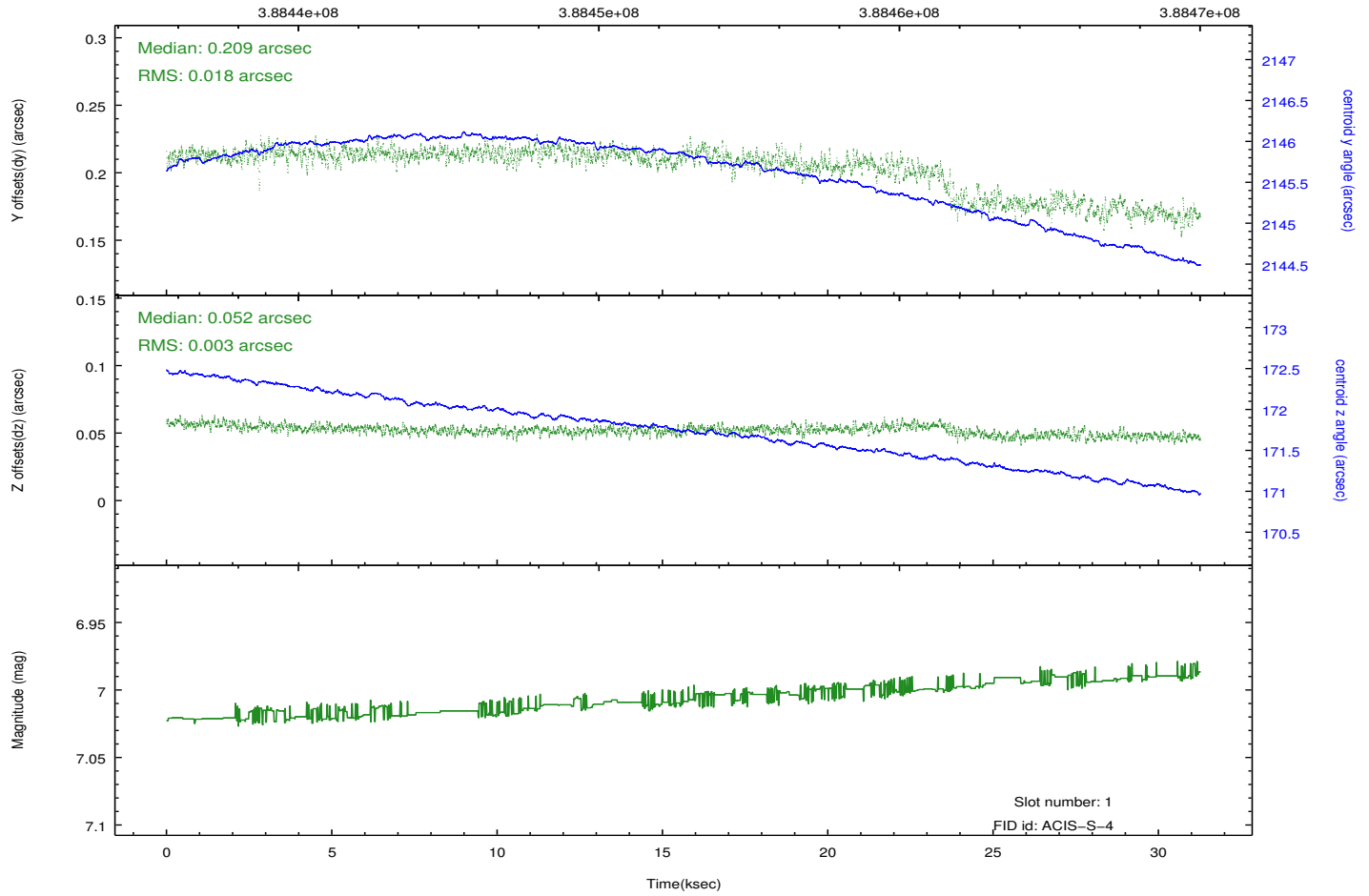
2.5.1 Slot 0



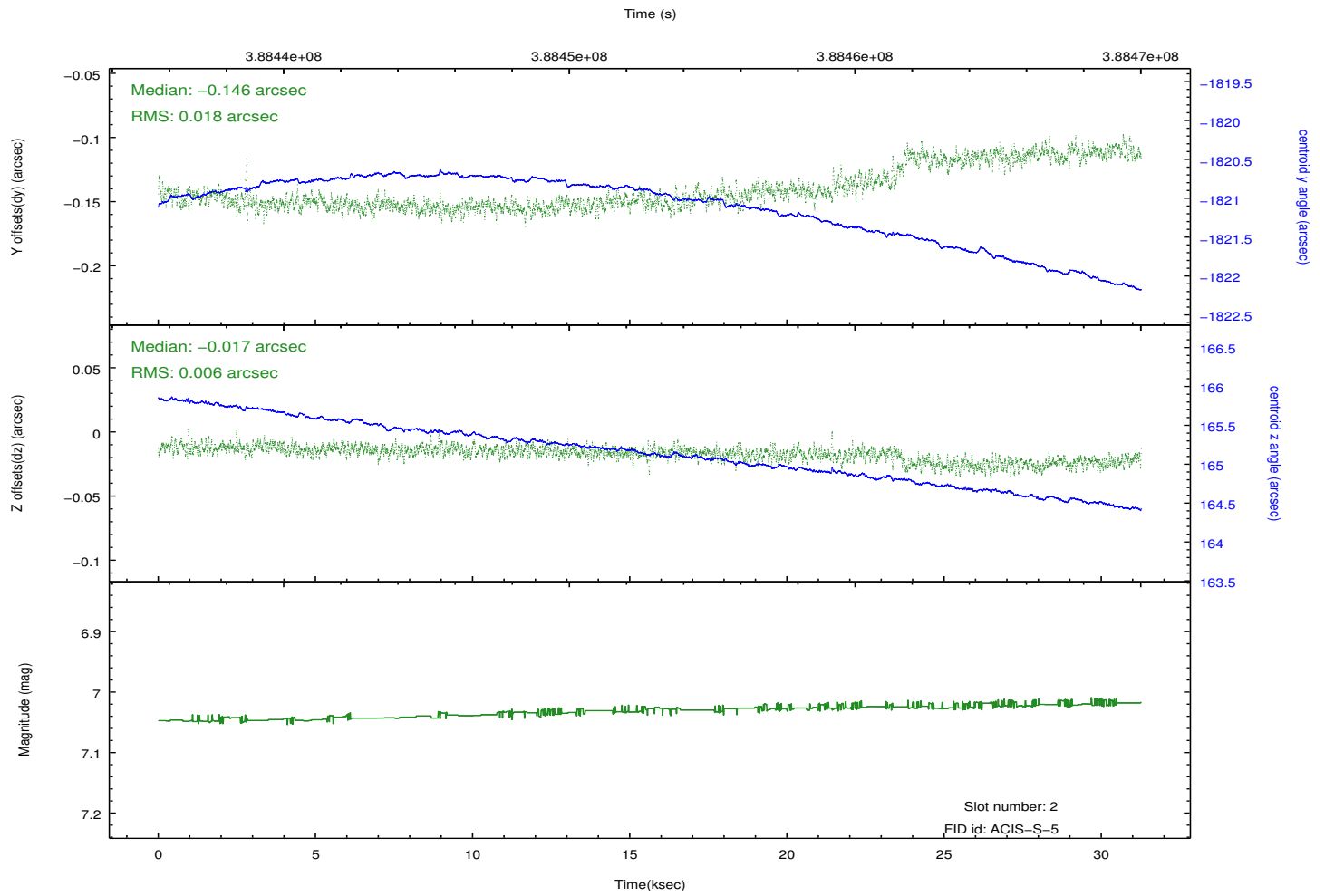
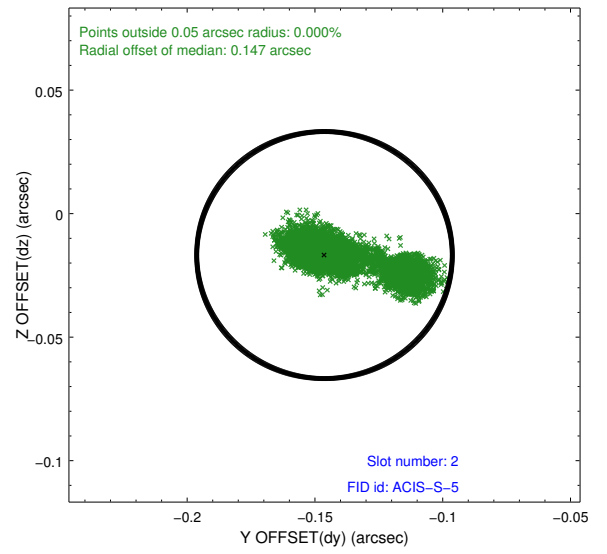
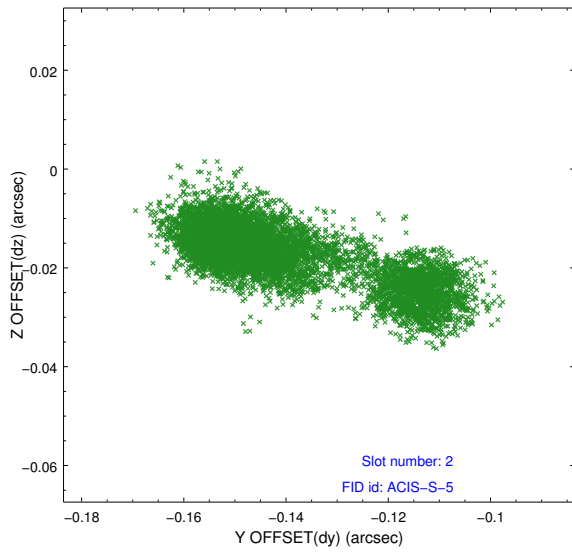
2.5.2 Slot 1



Time (s)



2.5.3 Slot 2



A Summary

A.1 Status

V&V Scientist	Beth Sundheim
V&V Date (YYYY-MM-DD)	2012.07.01
V&V Edition	1
V&V Disposition and Status	OK
V&V Charge Time	30.0446913

A.2 Comments