

V&V Reference Report

L2 ASCDS Version : 8.4.5

Observation 11377 - L2 Version 2
Chandra X-Ray Center

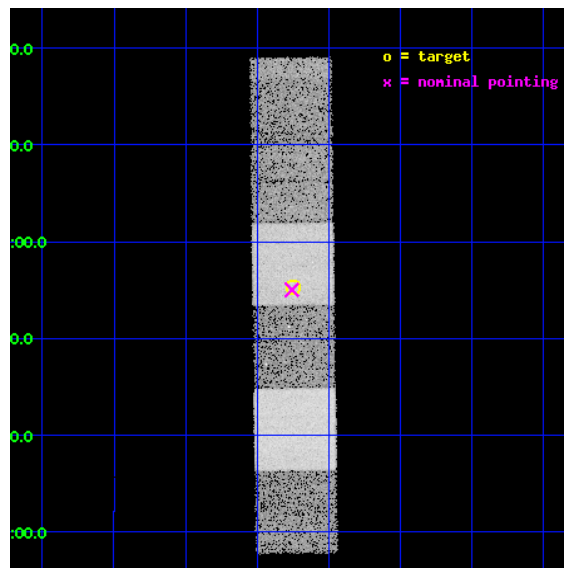
L2 Processing Date : Jul 2 2012

Contents

1	Front	2
2	OBI	3
2.1	OBI	3
2.1.1	Images	3
2.1.2	Bias	3
2.1.3	Parameters	4
2.1.4	Events	4
2.2	Compared Parameters	5
2.3	Aspect	6
2.4	Star Slots	9
2.4.1	Slot 3	9
2.4.2	Slot 4	10
2.4.3	Slot 5	11
2.4.4	Slot 6	12
2.4.5	Slot 7	13
2.5	FID Slots	14
2.5.1	Slot 0	14
2.5.2	Slot 1	15
2.5.3	Slot 2	16
A	Summary	17
A.1	Status	17
A.2	Comments	17

1 Front

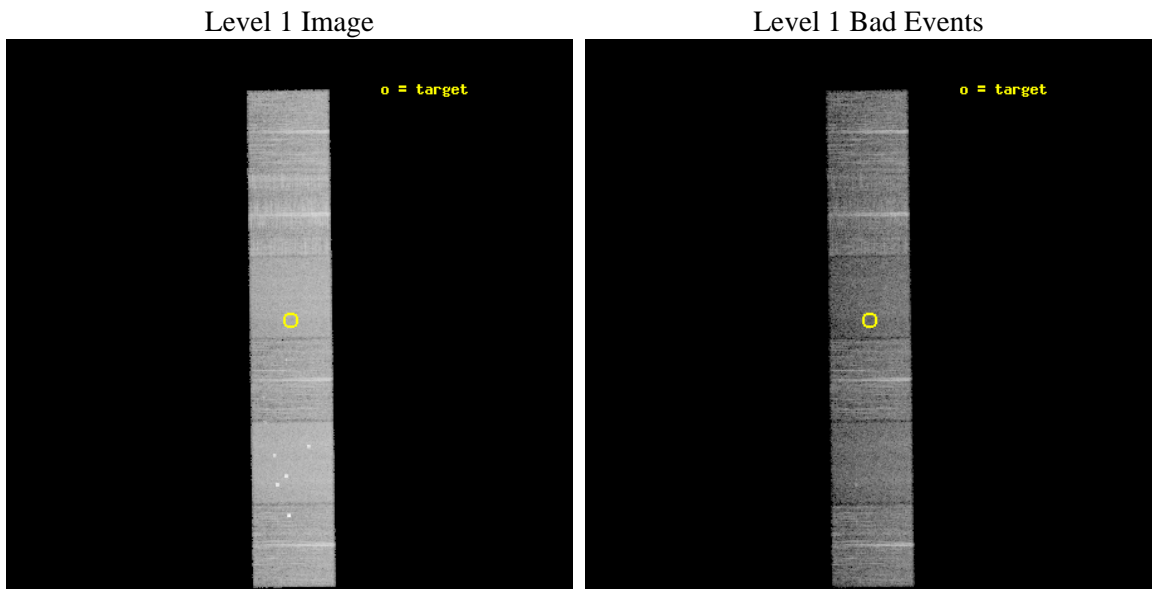
seq_num	600896	Sequence number
obs_id	11377	Observation id
title	Accretion onto nuclear black holes in early type galaxies: comparing field vs. clusters	Proposal title
observer	Elena Gallo	Principal investigator
object	PGC1210284	Source name
dtcycle	0	
cycle	P	events from which exps? Prim/Second/Both
ra_targ	227.312	Observer's specified target RA [deg]
dec_targ	1.92141	Observer's specified target Dec [deg]
ra_nom	227.31446321583	Nominal RA [deg]
dec_nom	1.917260331023	Nominal Dec [deg]
roll_nom	269.2264403534	Nominal Roll [deg]
revision	2	Processing version of data
ontime	11346.08673209	Sum of GTIs [s]
livetime	11202.415750095	Livetime [s]
ontime4	11346.127772093	Sum of GTIs [s]
ontime5	11346.045692086	Sum of GTIs [s]
ontime6	11346.004652083	Sum of GTIs [s]
ontime7	11346.08673209	Sum of GTIs [s]
ontime8	11342.722641826	Sum of GTIs [s]
ontime9	11345.922572076	Sum of GTIs [s]
l2events	140741	Number of level 2 events



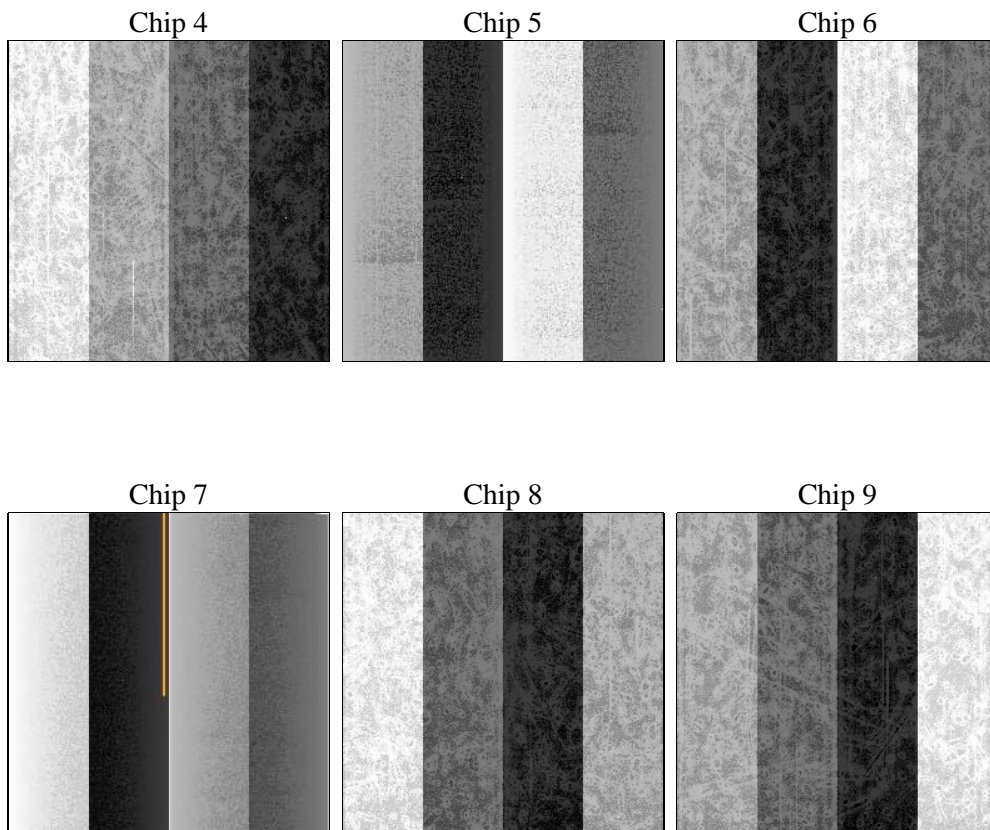
2 OBI

2.1 OBI

2.1.1 Images



2.1.2 Bias



2.1.3 Parameters

obi_num	0	Obi number	sched_exp_time	11300.000000	[s] Scheduled observation exposure time
ascdsver	8.4.5	Processing system revision	ontime	11346.08673209	Sum of GTIs [s]
caldbver	4.5.0	 	ontime4	11346.127772093	Sum of GTIs [s]
date	2012-07-02T19:21:07	Date and time of file creation	ontime5	11346.045692086	Sum of GTIs [s]
revision	2	Processing version of data	ontime6	11346.004652083	Sum of GTIs [s]
			ontime7	11346.08673209	Sum of GTIs [s]
			ontime8	11342.722641826	Sum of GTIs [s]
			ontime9	11345.922572076	Sum of GTIs [s]
			l1events	613938	Number of level 1 events

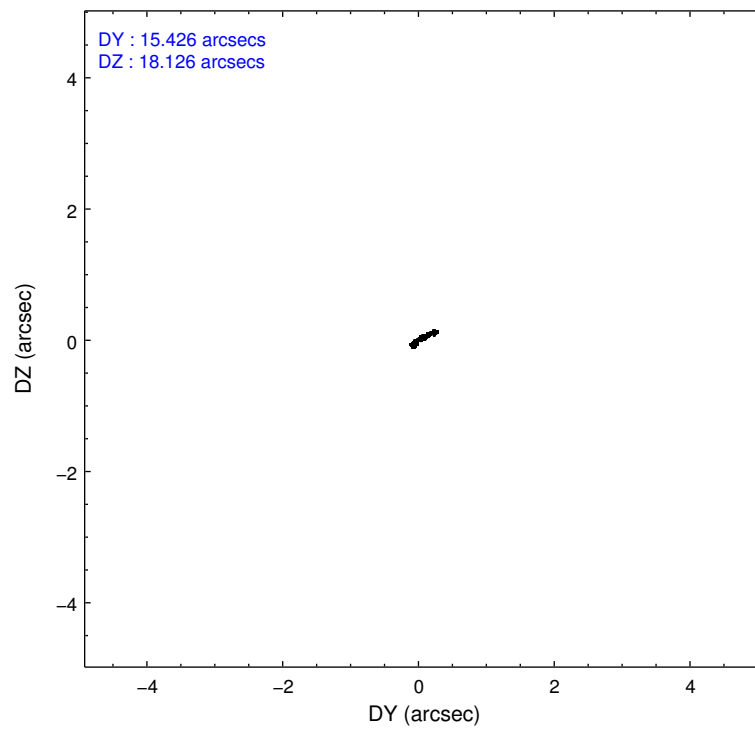
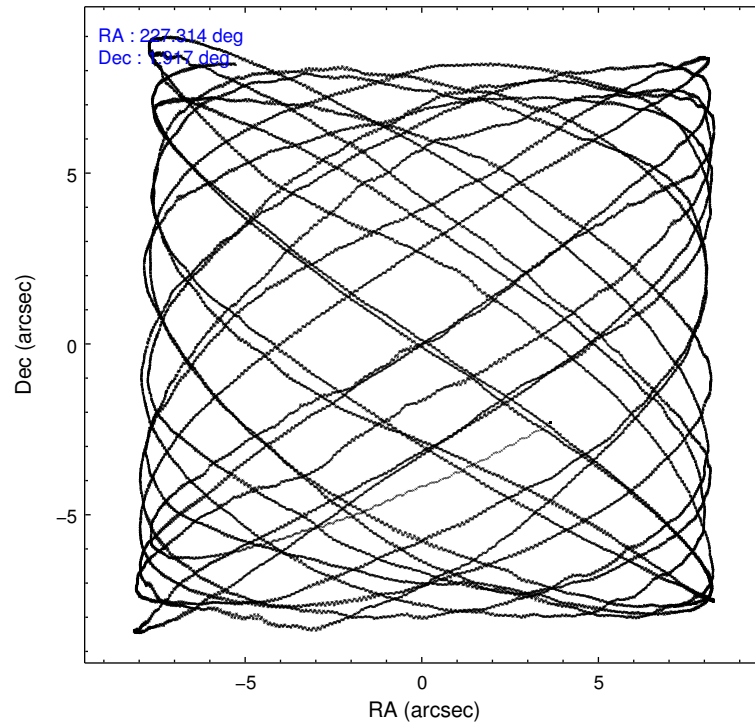
2.1.4 Events

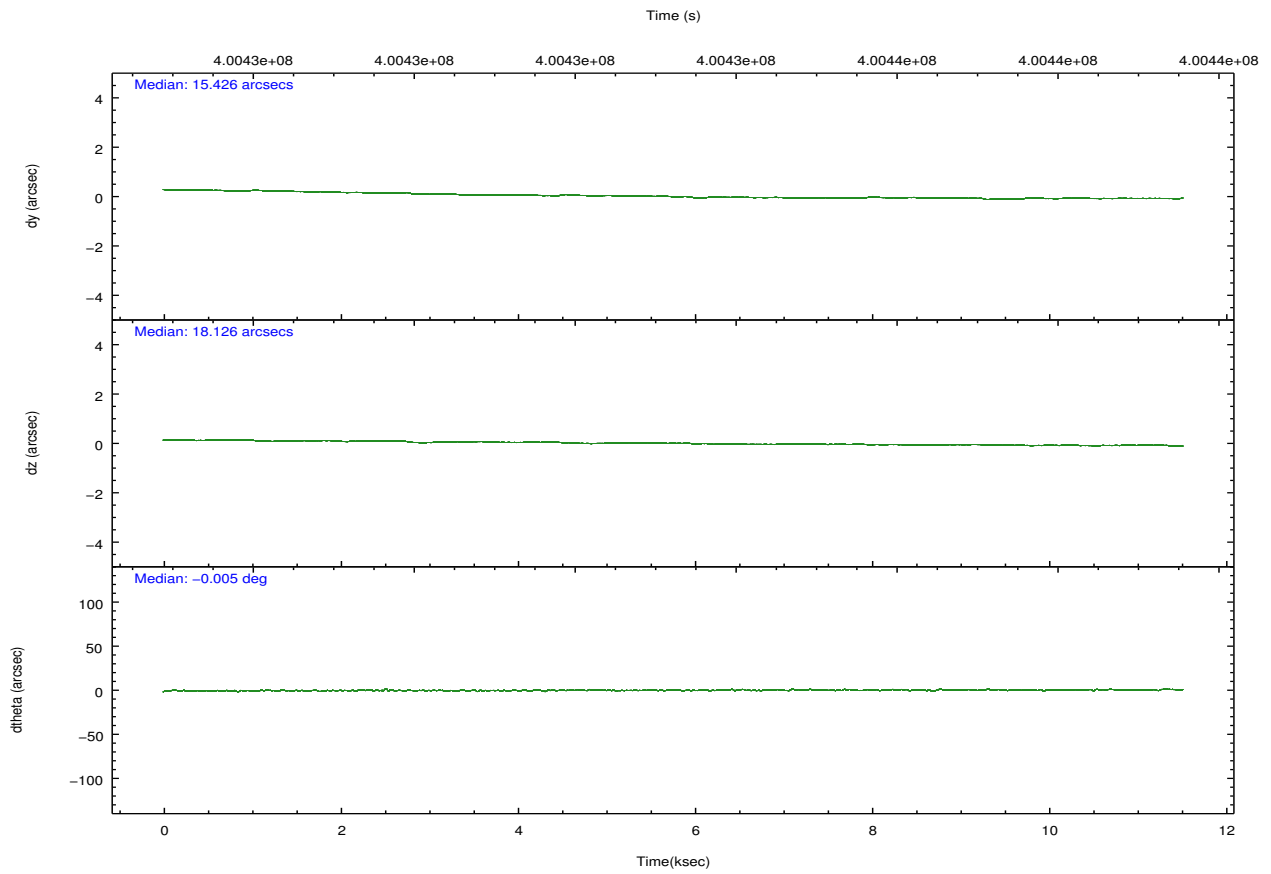
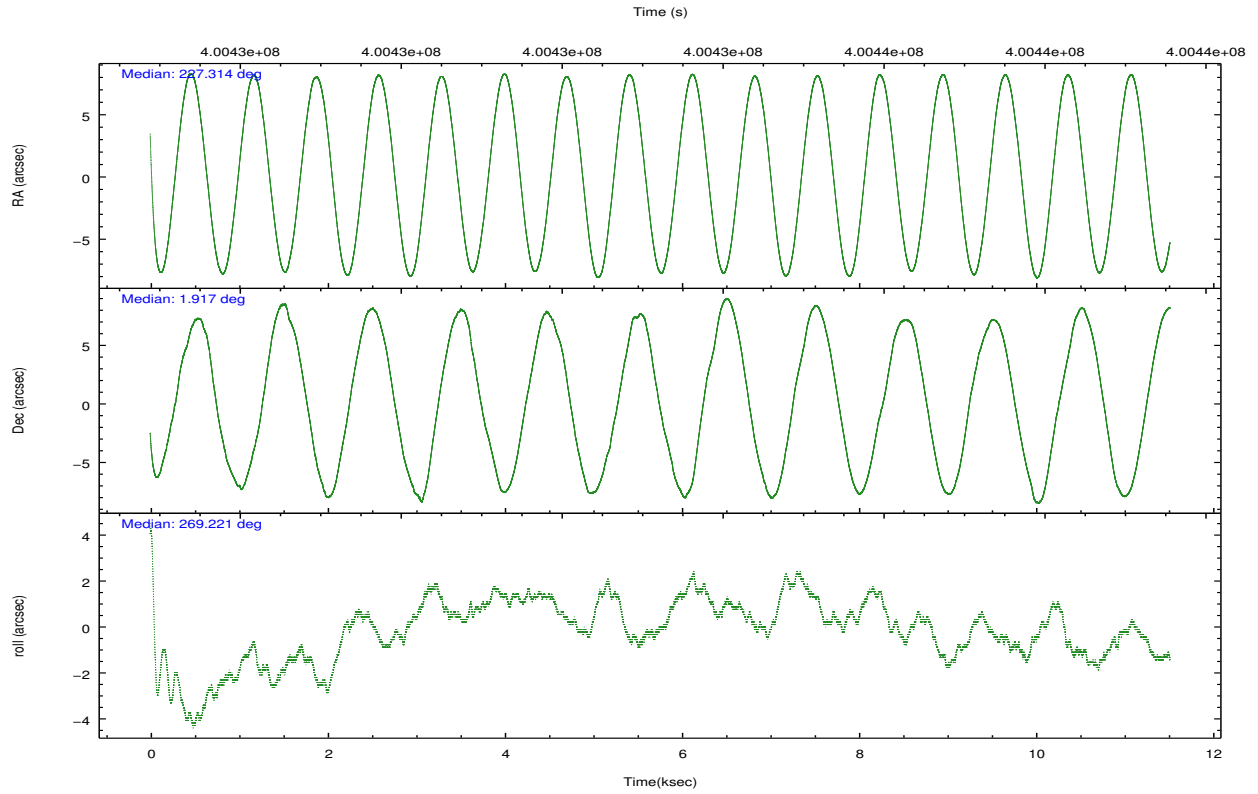
	ccd 4	ccd 5	ccd 6	ccd 7	ccd 8	ccd 9		ccd 4	ccd 5	ccd 6	ccd 7	ccd 8	ccd 9
level 1 events	95734	128887	87553	102098	112988	86678	grade 0 events	6484	8452	3636	4392	9535	3971
rejected events	82921	63654	77619	55712	82061	76286		6%	6%	4%	4%	8%	4%
rejected %	86%	49%	88%	54%	72%	88%	grade 1 events	112	360	43	142	107	36
								0%	0%	0%	0%	0%	0%
							grade 2 events	2493	18871	2180	9516	7025	2177
								2%	14%	2%	9%	6%	2%
							grade 3 events	1095	2655	1034	4125	3358	1053
								1%	2%	1%	4%	2%	1%
							grade 4 events	1029	2542	999	4197	3100	1047
								1%	1%	1%	4%	2%	1%
							grade 5 events	3705	9874	3964	10878	5574	4251
								3%	7%	4%	10%	4%	4%
							grade 6 events	1717	32727	2089	24169	7911	2145
								1%	25%	2%	23%	7%	2%
							grade 7 events	79099	53406	73608	44679	76378	71998
								82%	41%	84%	43%	67%	83%

2.2 Compared Parameters

Parameter	Planned	Actual	Parameter	Planned	Actual
Instrument	ACIS	ACIS	Obspar format version number	7	7
Detector	ACIS-456789	ACIS-456789	Obspar file type	PREDICTED	ACTUAL
Grating	NONE	NONE	Obspar update status	NONE	UPDATED
Data mode	VFAINT	VFAINT	CCD I0 on	N	N
Observation mode	POINTING	POINTING	CCD I1 on	N	N
[deg] Pointing RA	227.300809	227.3144632158336	CCD I2 on	N	N
[deg] Pointing Dec	1.940925	1.917260331022979	CCD I3 on	N	N
[deg] Pointing Roll	269.070265	269.2264403534041	CCD S0 on	O1	Y
[mm] SIM focus pos	-0.684267	-0.6828225247311905	CCD S1 on	Y	Y
[mm] SIM defocus	0	0.001444936568705701	CCD S2 on	Y	Y
[mm] SIM translation stage pos	-190.132523	-190.1425803651734	CCD S3 on	Y	Y
[mm] SIM translation stage offset	0	0.01005778216563158	CCD S4 on	Y	Y
[s] Observation start time (MET)	400427661.184000	400426630.75558	CCD S5 on	O2	Y
Observation start date	2010-09-09T13:53:15	2010-09-09T13:37:10	Number of optional ACIS chips dropped	0	0
[s] Observation end time (MET)	400438961.184000	400439195.71873	On-chip summing requested	N	N
Observation end date	2010-09-09T17:01:35	2010-09-09T17:06:35	Subarray requested	NONE	NONE
Read mode	TIMED	TIMED	Alternating exposures requested	N	N
			[s] Primary exposure time	0.000000	3.2

2.3 Aspect



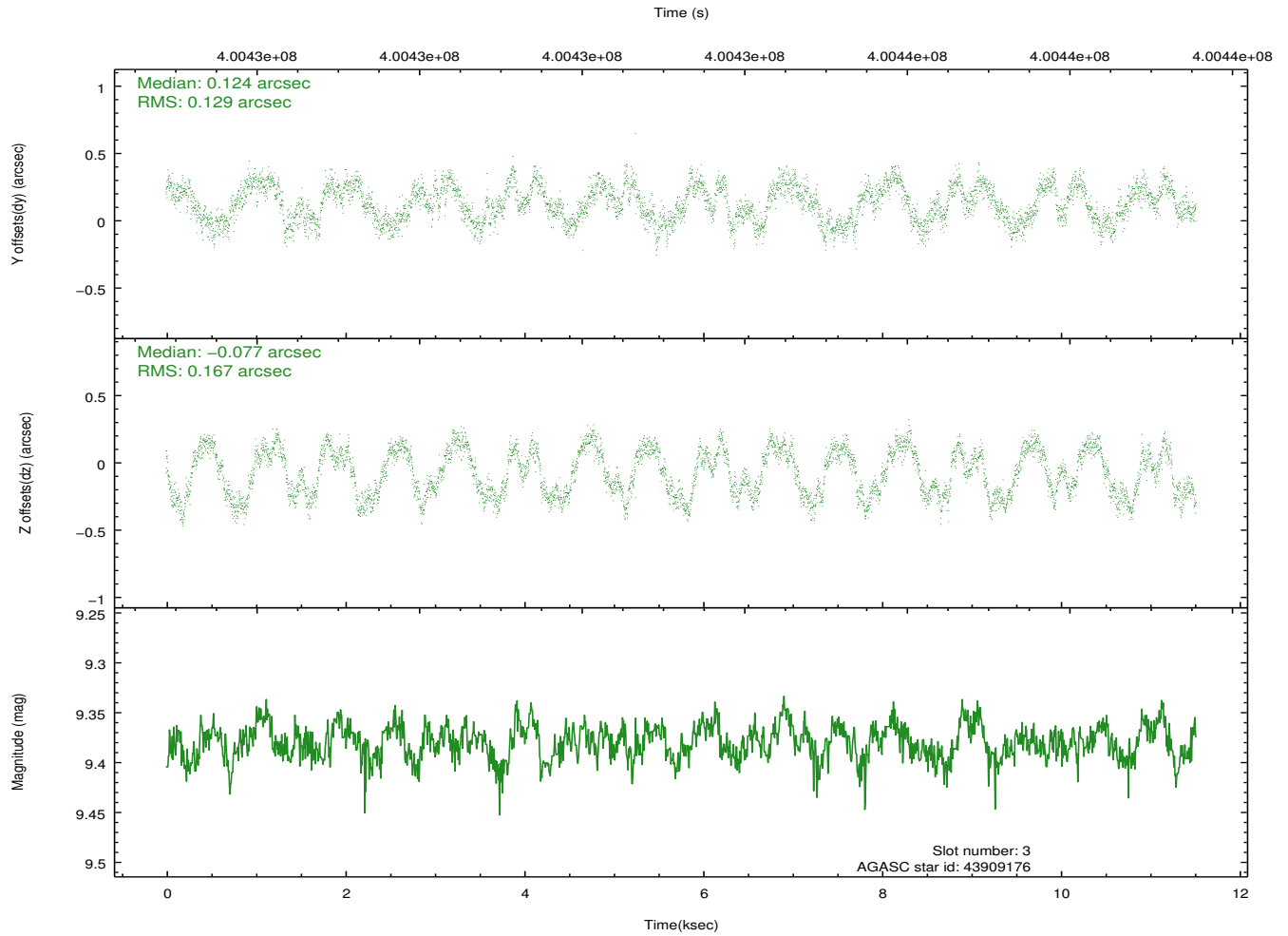
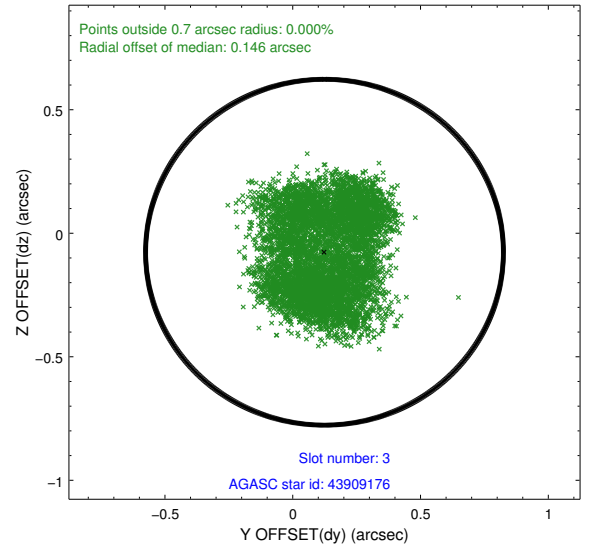
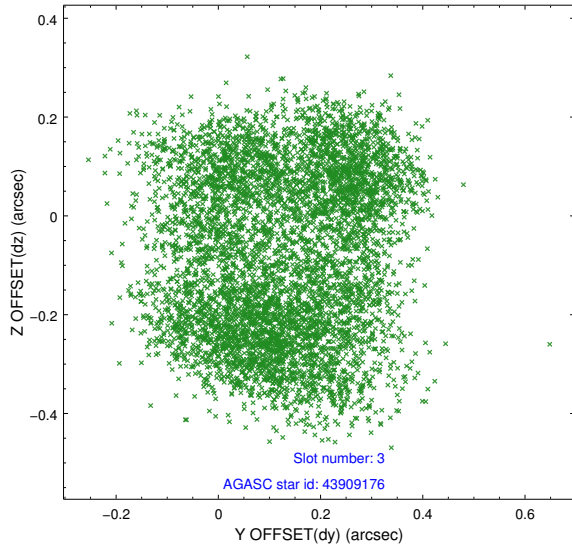


Slot Statistics

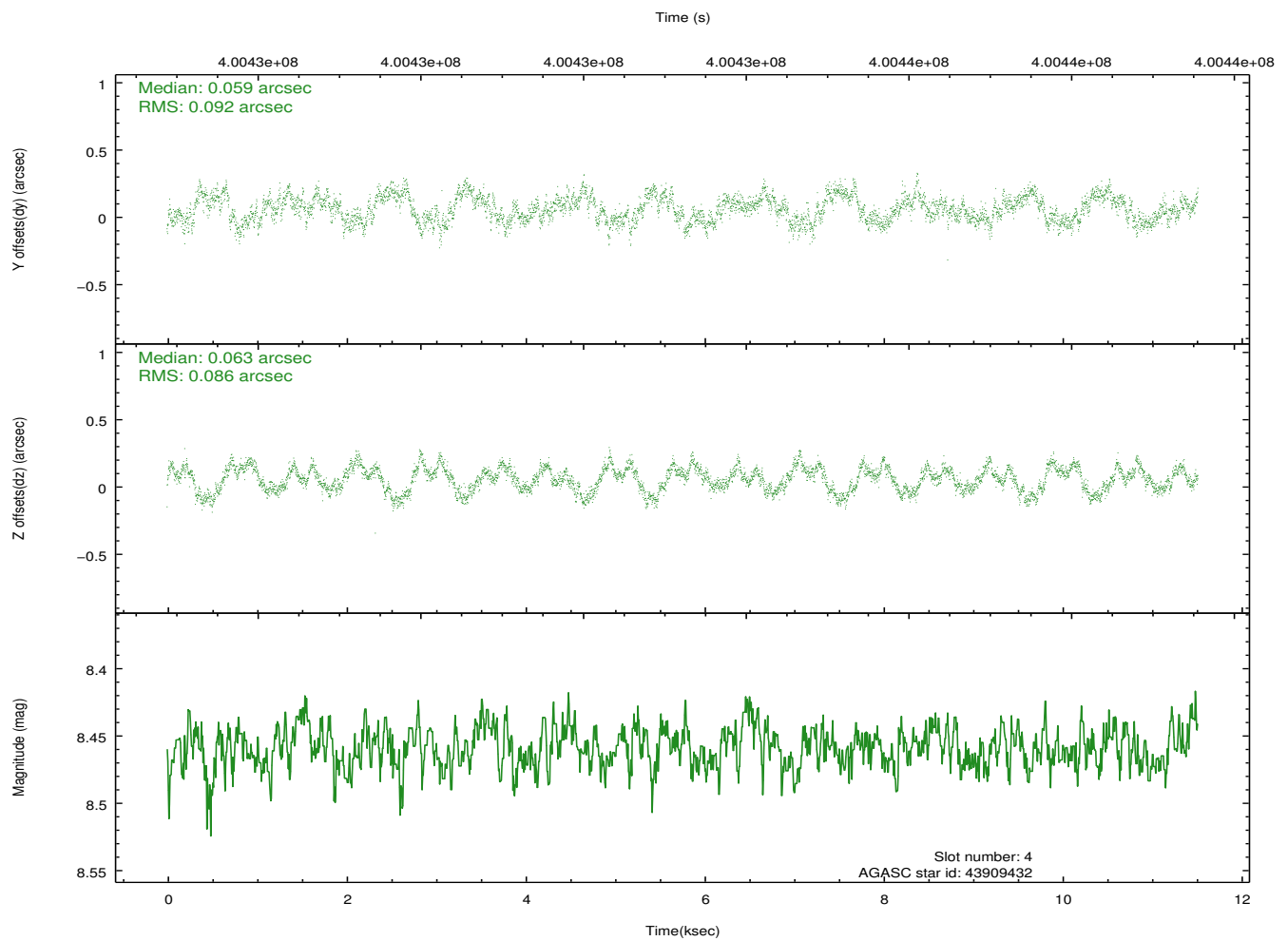
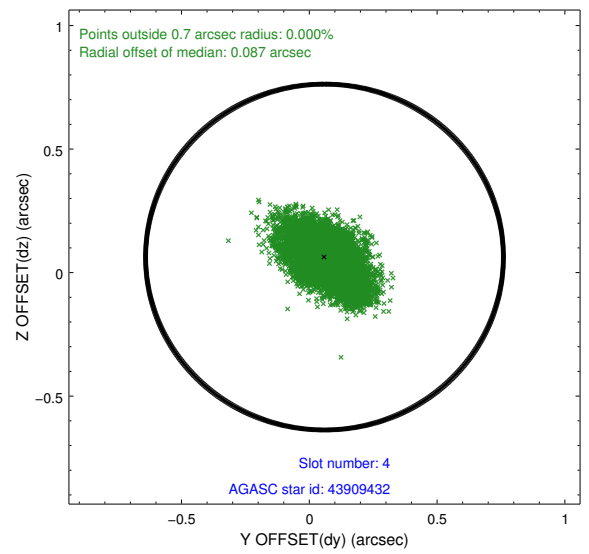
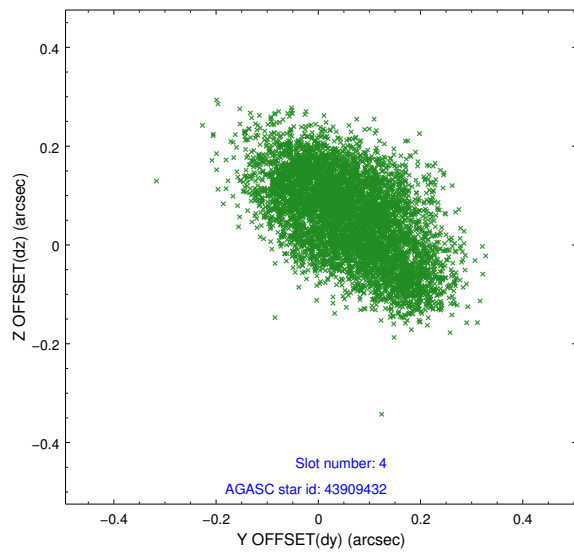
slot	status	id	mag	n_pts	med_dy	med_dz	dr1	dr2	ra	dec	mean_y	mean_z
0	FID	ACIS-S-1	6.94	2809	0.081	-0.017	0.006	0.011	0.000000	0.000000	927.65	-1735.21
1	FID	ACIS-S-5	6.99	2810	-0.125	0.065	0.006	0.011	0.000000	0.000000	-1821.28	162.02
2	FID	ACIS-S-6	7.10	2810	0.023	-0.037	0.007	0.012	0.000000	0.000000	392.71	806.34
3	GUIDE	43909176	9.38	5613	0.124	-0.077	0.234	0.316	227.095539	1.632644	1122.00	-720.84
4	GUIDE	43909432	8.46	5620	0.059	0.063	0.135	0.216	227.032488	1.308525	2292.94	-928.07
5	GUIDE	44435552	9.35	5615	-0.203	0.124	0.198	0.305	227.842357	2.543650	-2200.80	1912.32
6	GUIDE	44435584	10.36	5605	0.174	-0.012	0.342	0.502	227.059330	1.975435	-109.65	-870.09
7	GUIDE	43778136	9.94	5607	-0.153	-0.140	0.263	0.419	226.618648	1.723890	821.26	-2441.49

2.4 Star Slots

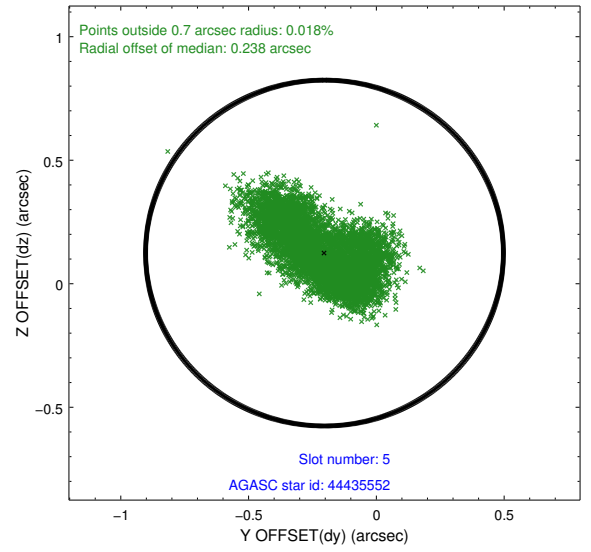
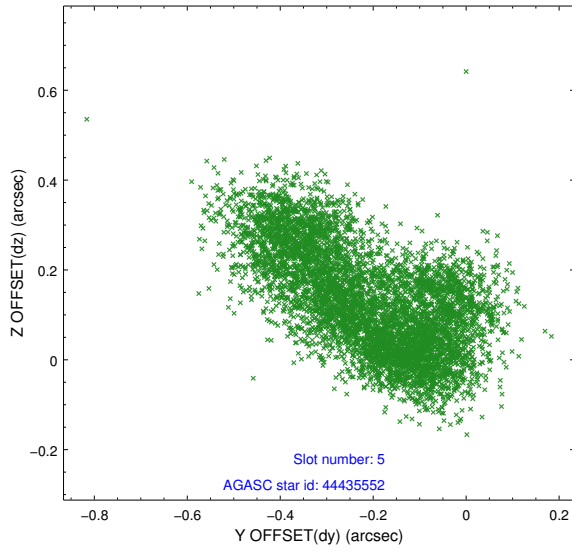
2.4.1 Slot 3



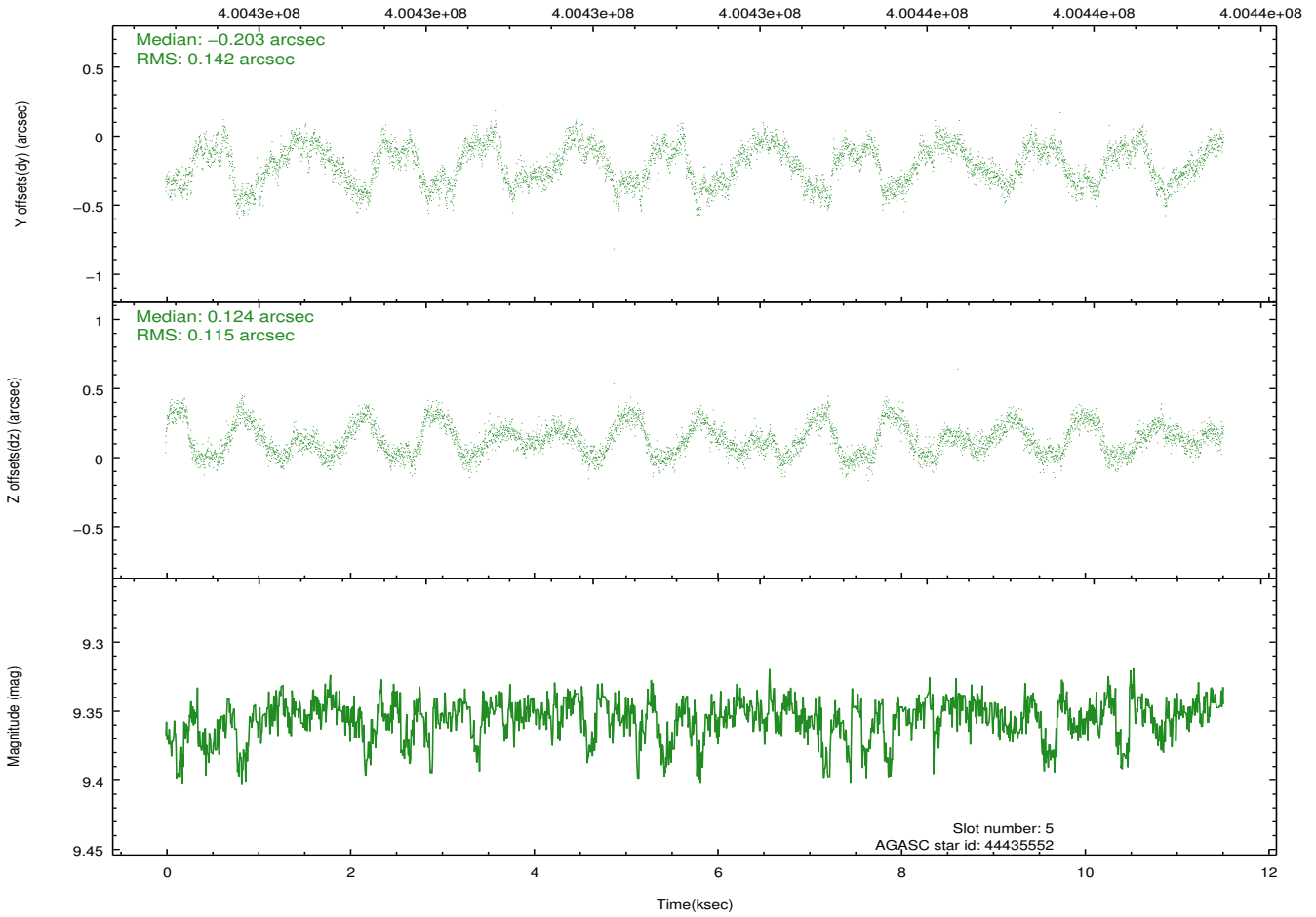
2.4.2 Slot 4



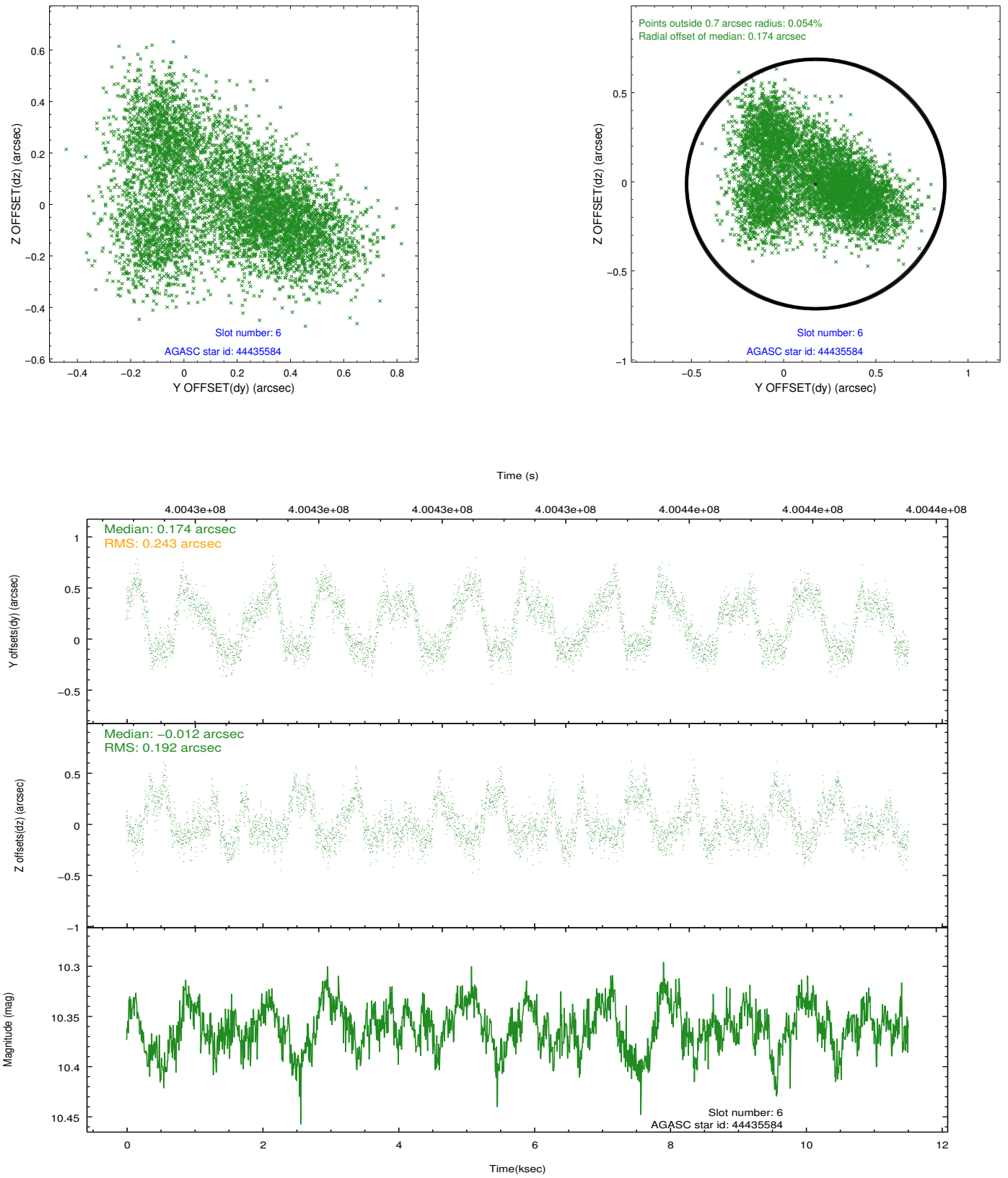
2.4.3 Slot 5



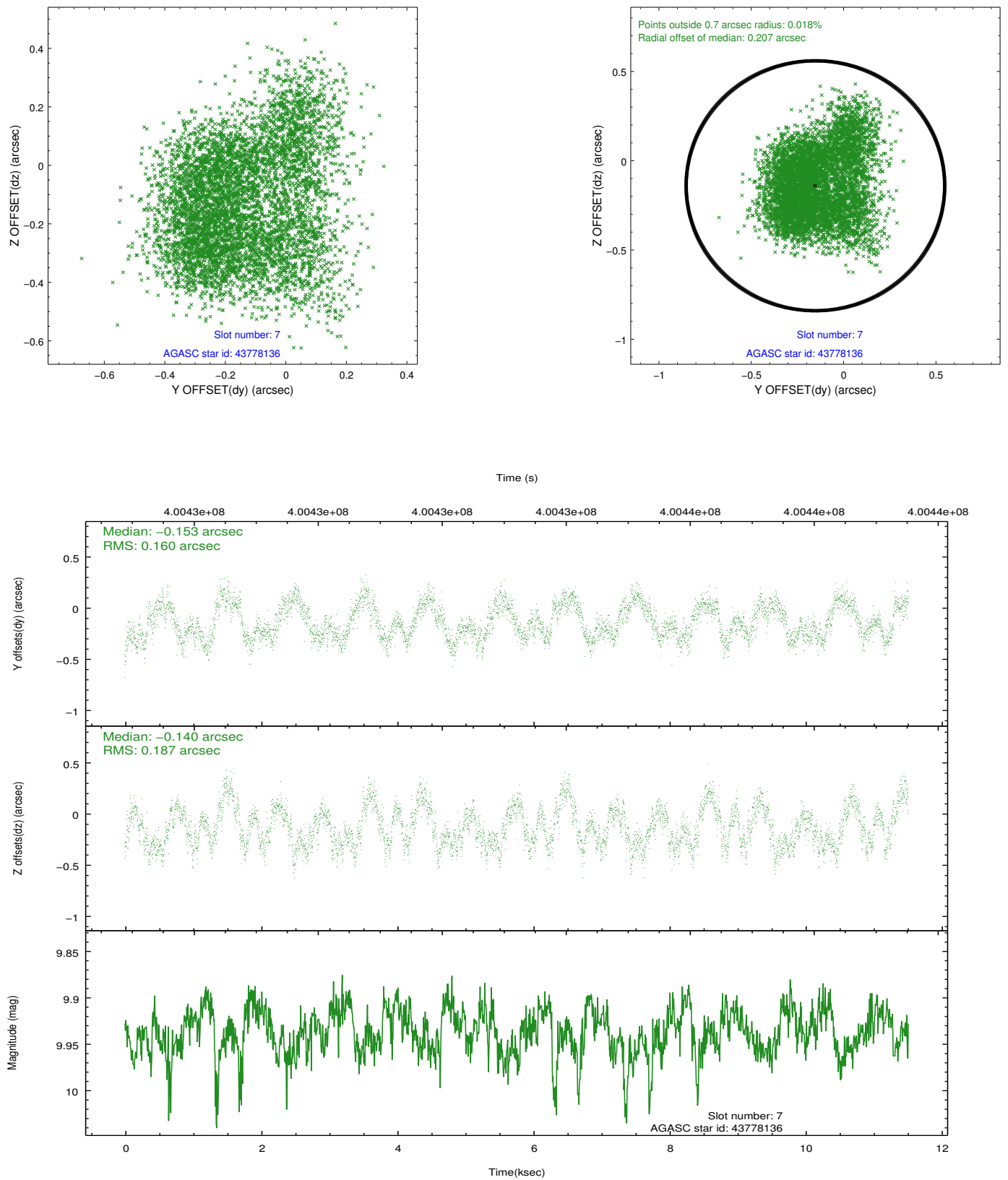
Time (s)



2.4.4 Slot 6

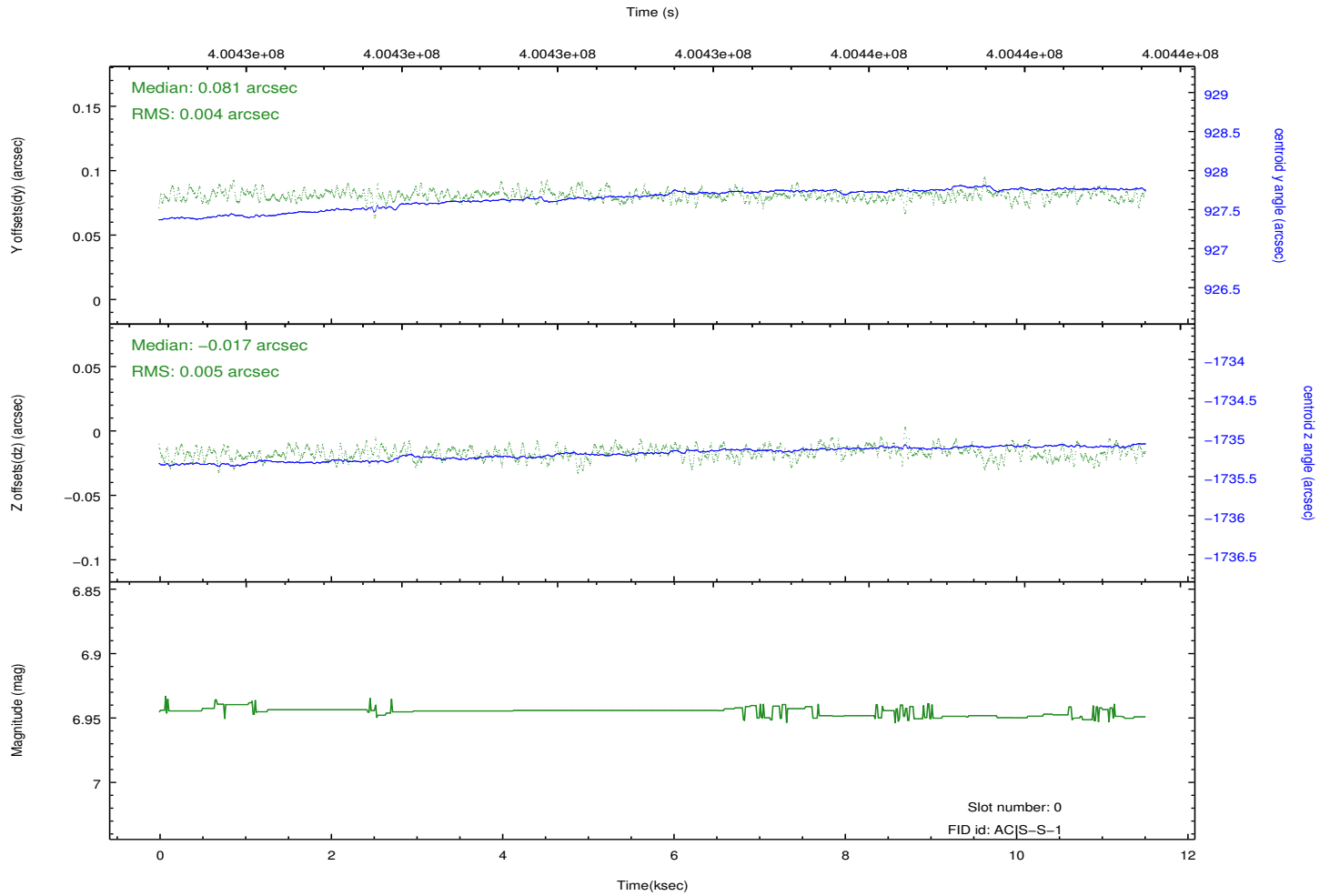
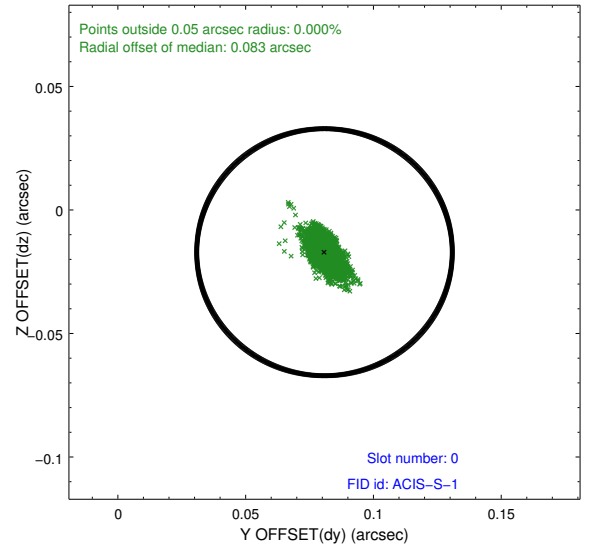
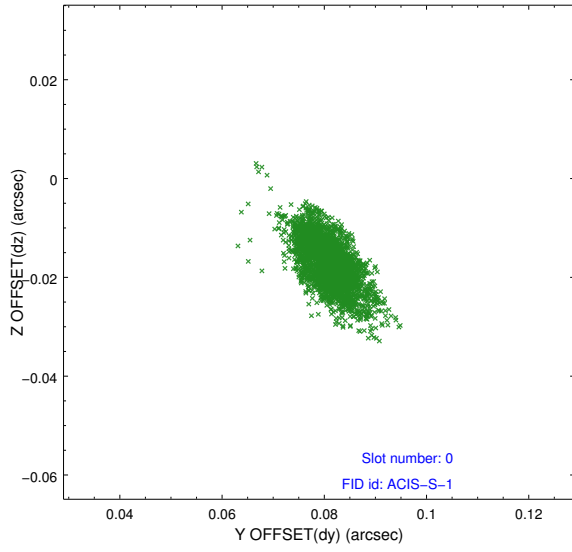


2.4.5 Slot 7

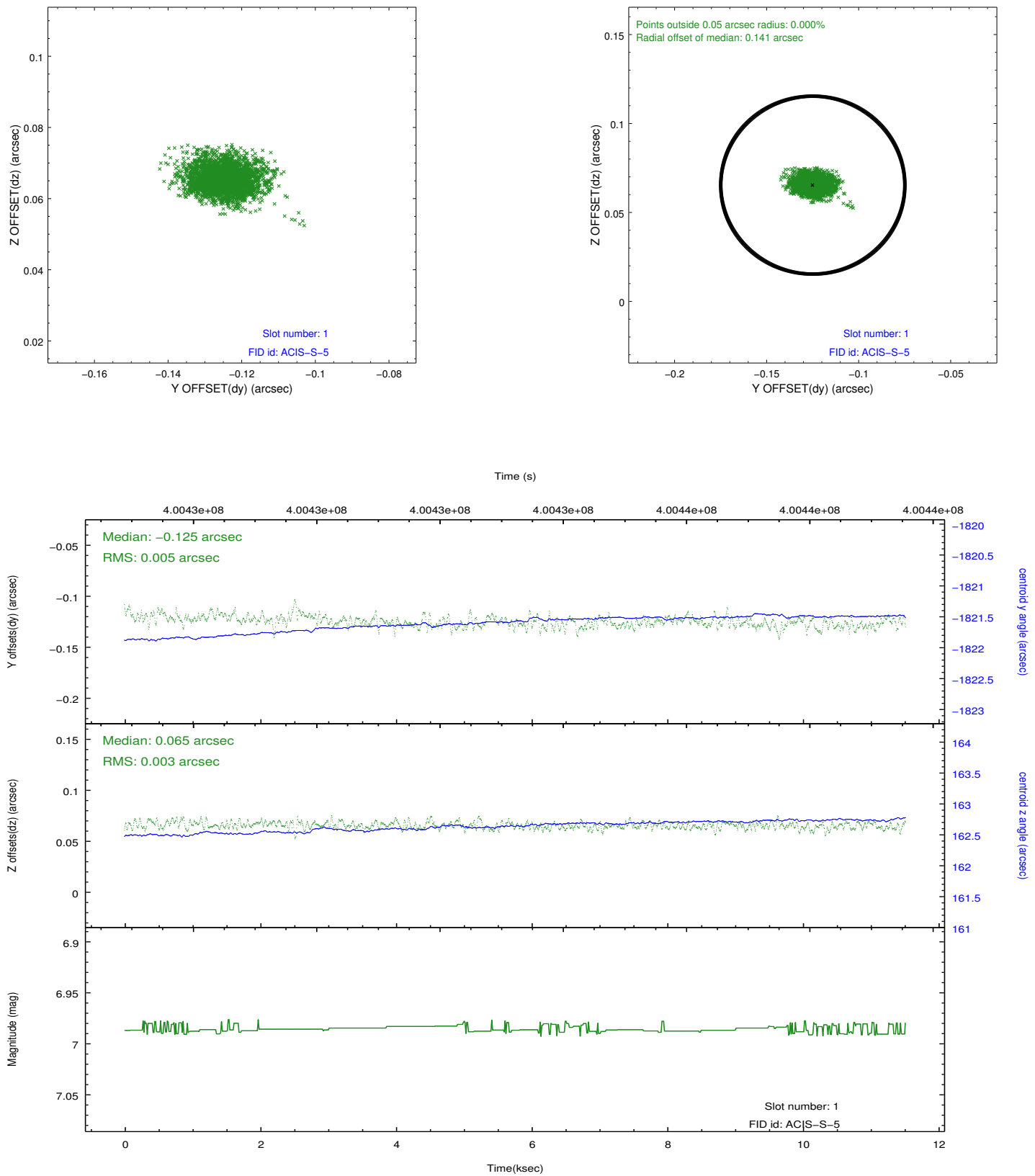


2.5 FID Slots

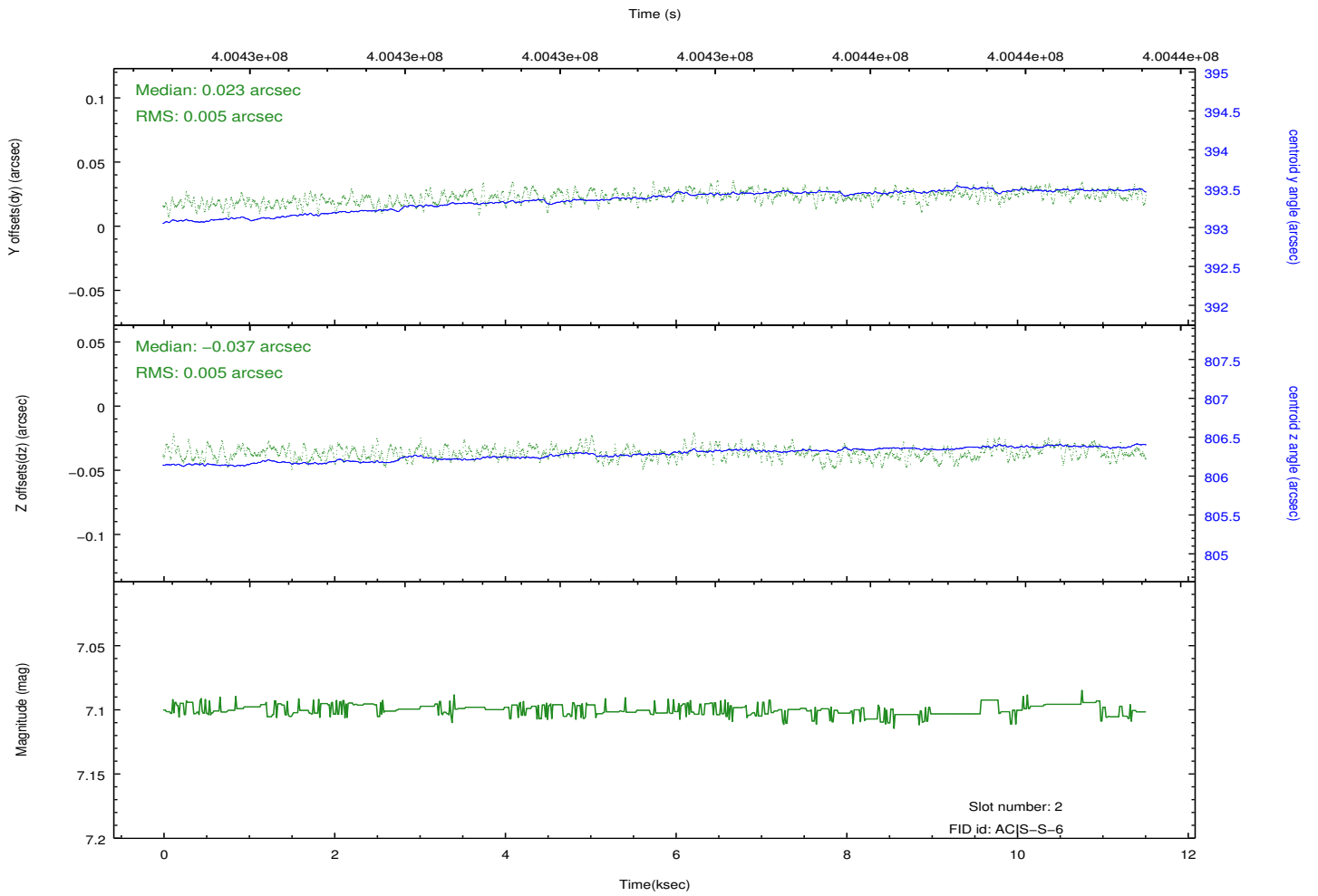
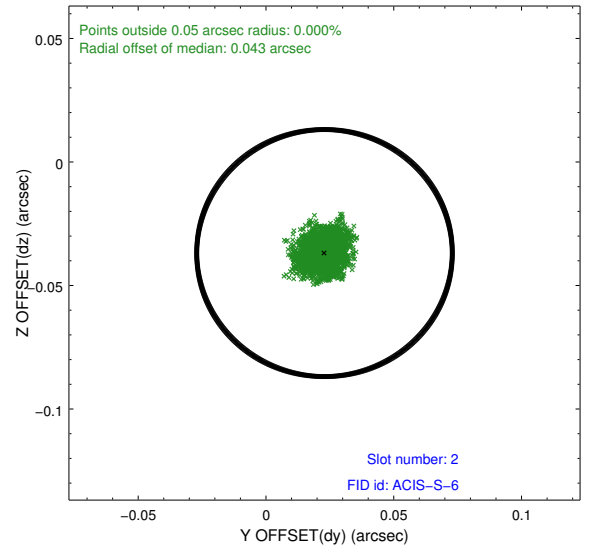
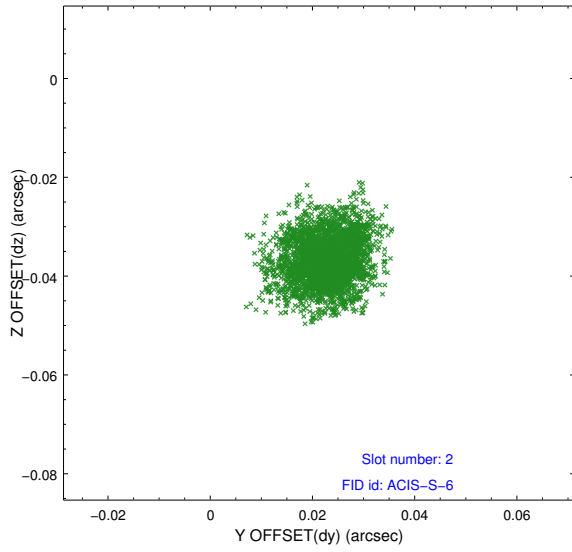
2.5.1 Slot 0



2.5.2 Slot 1



2.5.3 Slot 2



A Summary

A.1 Status

V&V Scientist	Jen Lauer
V&V Date (YYYY-MM-DD)	2012.07.11
V&V Edition	1
V&V Disposition and Status	OK
V&V Charge Time	11.346086731613

A.2 Comments