

# V&V Reference Report

## L2 ASCDS Version : 8.4.5

Observation 11717 - L2 Version 2  
Chandra X-Ray Center

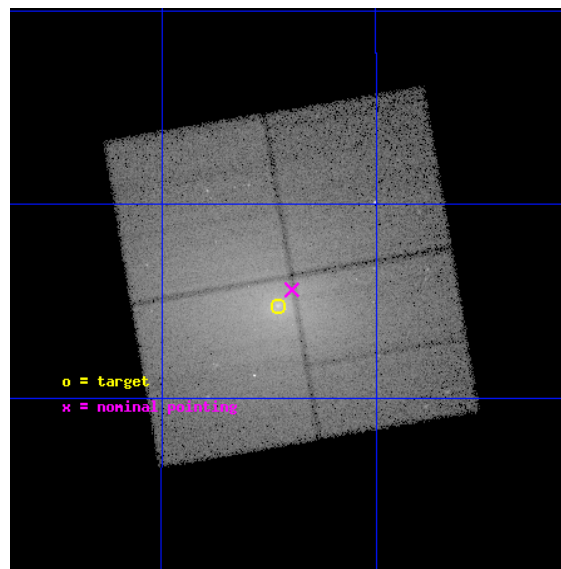
L2 Processing Date : Jun 16 2012

## Contents

<b>1</b>	<b>Front</b>	<b>2</b>
<b>2</b>	<b>OBI</b>	<b>3</b>
2.1	OBI . . . . .	3
2.1.1	Images . . . . .	3
2.1.2	Bias . . . . .	3
2.1.3	Parameters . . . . .	4
2.1.4	Events . . . . .	4
2.2	Compared Parameters . . . . .	5
2.3	Aspect . . . . .	6
2.4	Star Slots . . . . .	9
2.4.1	Slot 3 . . . . .	9
2.4.2	Slot 4 . . . . .	10
2.4.3	Slot 5 . . . . .	11
2.4.4	Slot 6 . . . . .	12
2.4.5	Slot 7 . . . . .	13
2.5	FID Slots . . . . .	14
2.5.1	Slot 0 . . . . .	14
2.5.2	Slot 1 . . . . .	15
2.5.3	Slot 2 . . . . .	16
<b>A</b>	<b>Summary</b>	<b>17</b>
A.1	Status . . . . .	17
A.2	Comments . . . . .	17

# 1 Front

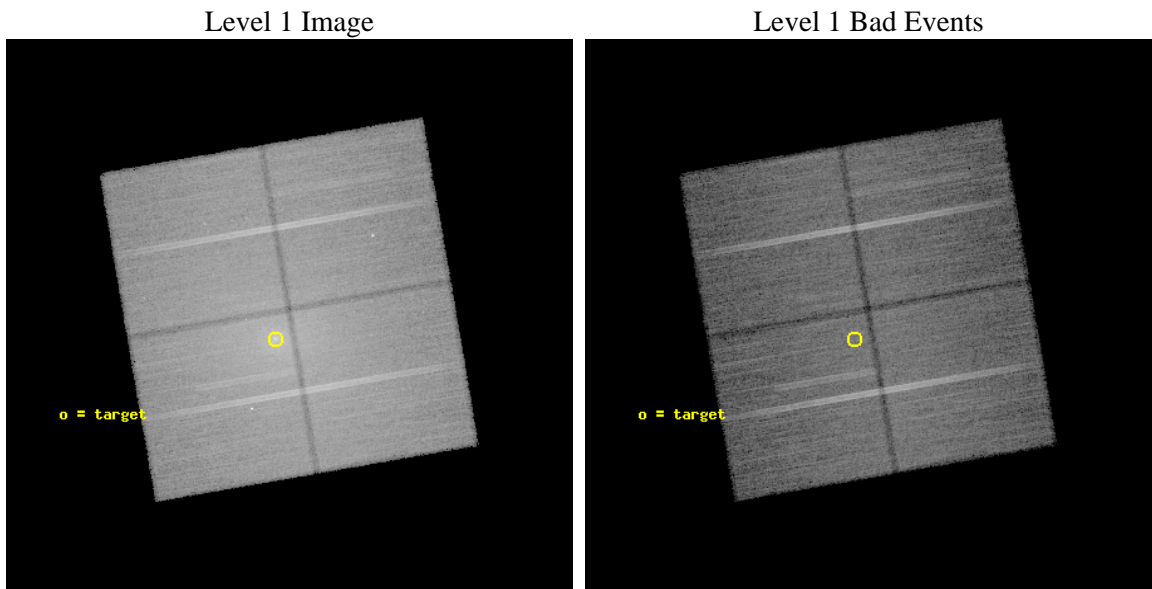
seq_num	800857	Sequence number
obs_id	11717	Observation id
title	Testing AGN feedback with AWM7	Proposal title
observer	Dr Jeremy Sanders	Principal investigator
object	AWM7	Source name
dtcycle	0	&#160
cycle	P	events from which exps? Prim/Second/Both
ra_targ	43.614583	Observer's specified target RA [deg]
dec_targ	41.579167	Observer's specified target Dec [deg]
ra_nom	43.598367547883	Nominal RA [deg]
dec_nom	41.593212980287	Nominal Dec [deg]
roll_nom	170.21944291015	Nominal Roll [deg]
revision	2	Processing version of data
ontime	40120.159288406	Sum of GTIs [s]
livetime	39595.959871272	Livetime [s]
ontime0	40110.736337304	Sum of GTIs [s]
ontime1	40120.159298301	Sum of GTIs [s]
ontime2	40113.877347648	Sum of GTIs [s]
ontime3	40120.159288406	Sum of GTIs [s]
l2events	503406	Number of level 2 events



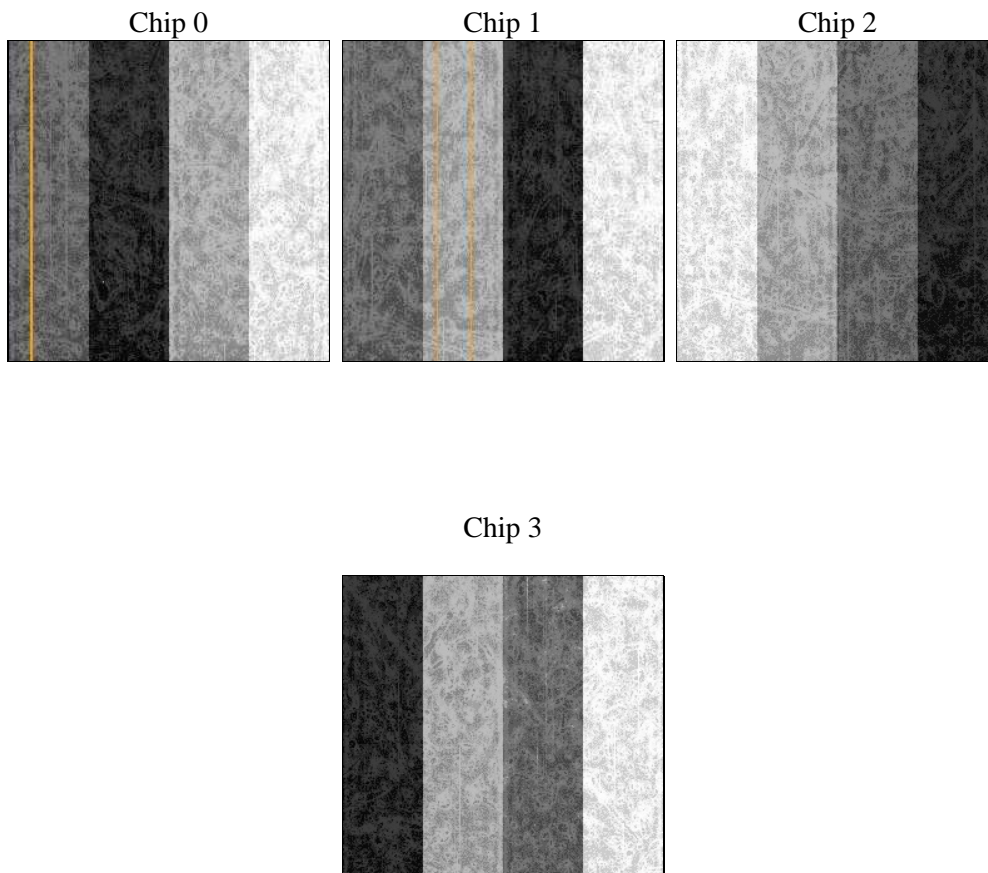
## 2 OBI

### 2.1 OBI

#### 2.1.1 Images



#### 2.1.2 Bias



### 2.1.3 Parameters

obi_num	0	Obi number	sched_exp_time	40000.000000	[s] Scheduled observation exposure time
ascdsver	8.4.5	Processing system revision	ontime	40120.159288406	Sum of GTIs [s]
caldsver	4.4.10	&#160	ontime0	40110.736337304	Sum of GTIs [s]
date	2012-06-16T02:33:00	Date and time of file creation	ontime1	40120.159298301	Sum of GTIs [s]
revision	2	Processing version of data	ontime2	40113.877347648	Sum of GTIs [s]
			ontime3	40120.159288406	Sum of GTIs [s]
			l1events	1802134	Number of level 1 events

### 2.1.4 Events

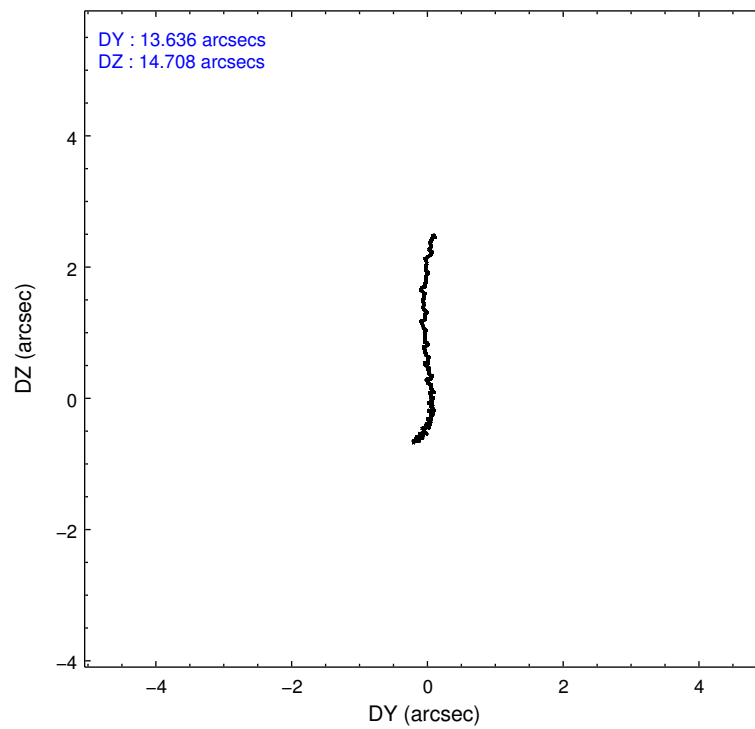
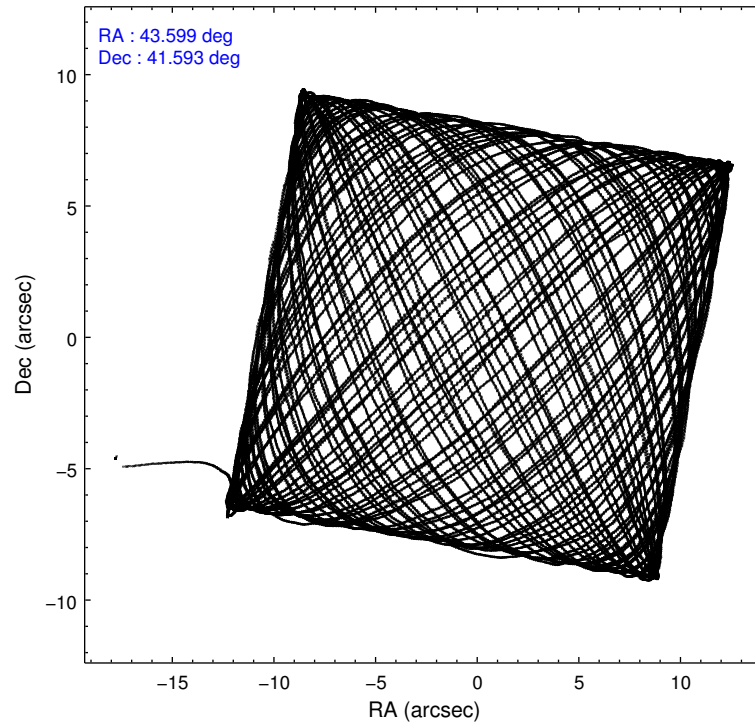
	ccd 0	ccd 1	ccd 2	ccd 3
level 1 events	383555	424257	472615	521707
rejected events	296430	292467	339558	324650
rejected %	77%	68%	71%	62%

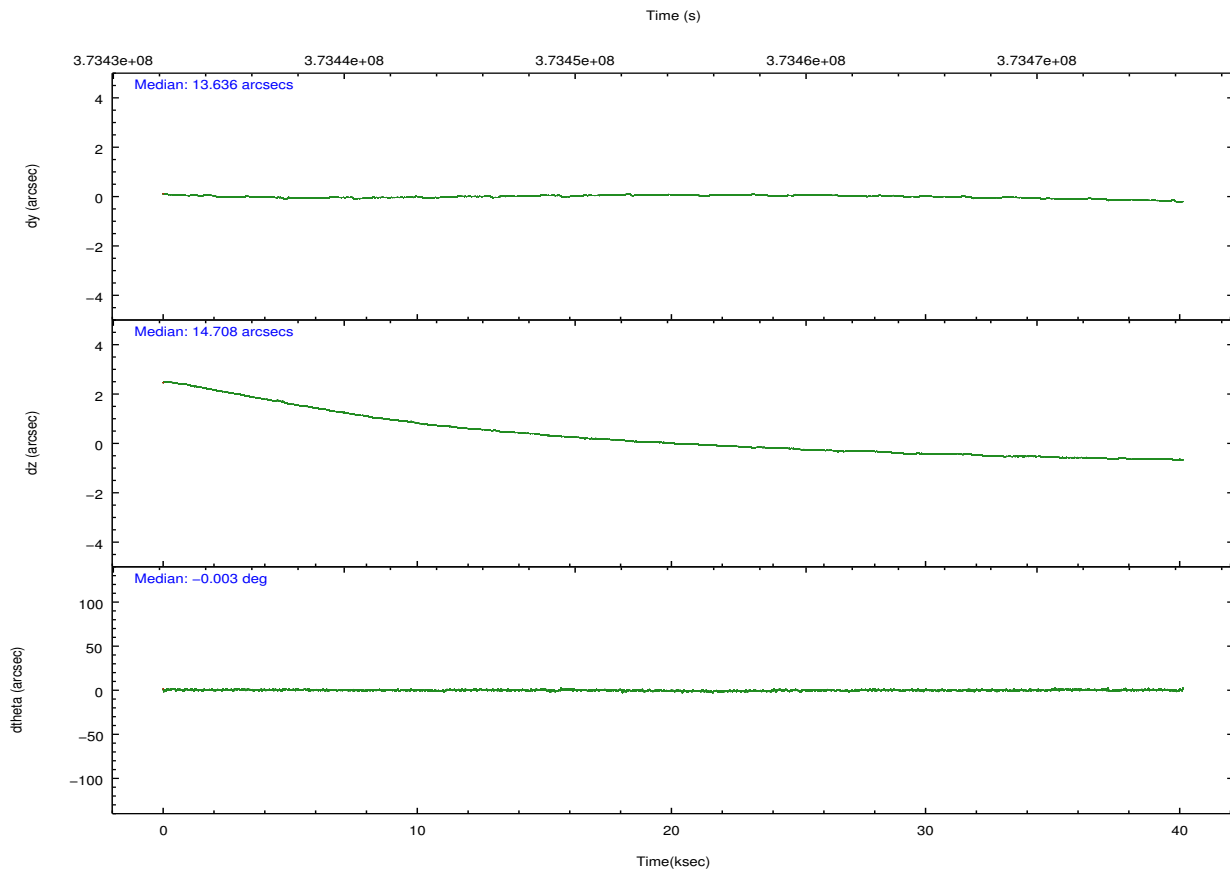
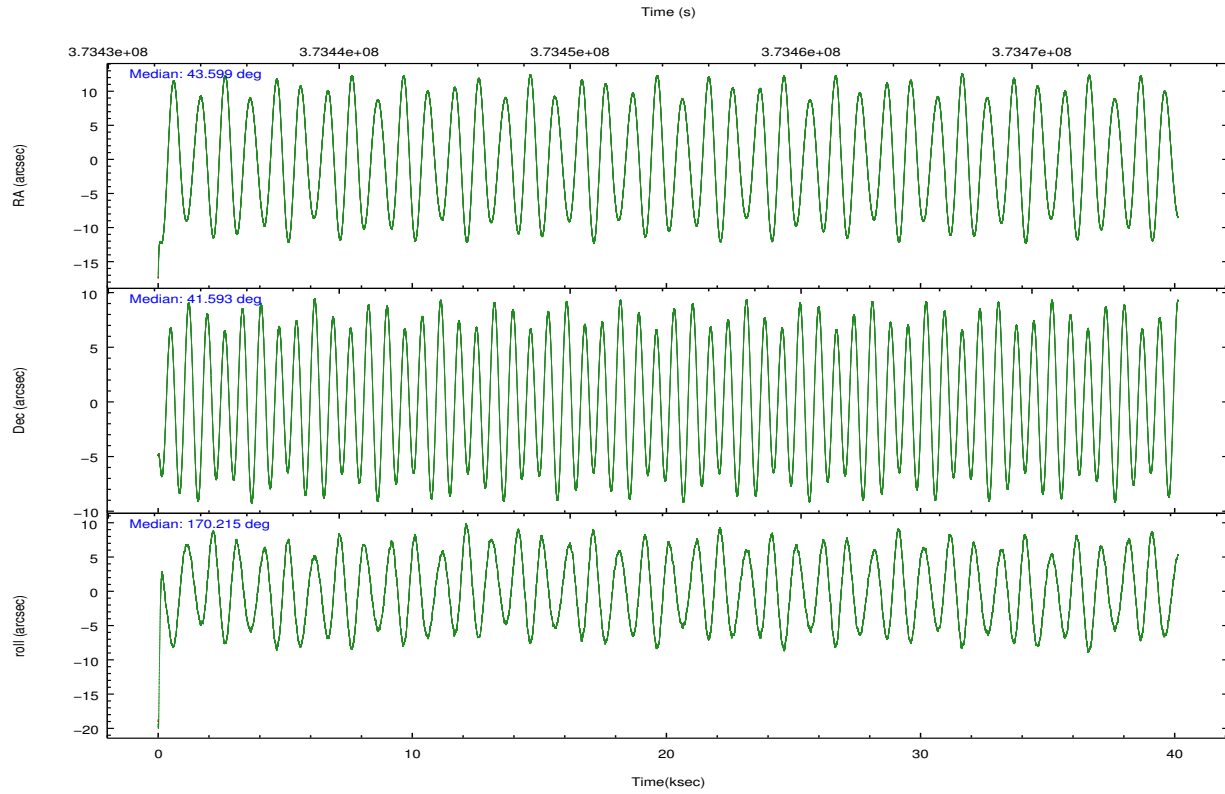
	ccd 0	ccd 1	ccd 2	ccd 3
grade 0 events	54475	89415	93274	146543
	14%	21%	19%	28%
grade 1 events	447	616	792	1118
	0%	0%	0%	0%
grade 2 events	14226	18970	18085	23796
	3%	4%	3%	4%
grade 3 events	5544	7118	6737	8785
	1%	1%	1%	1%
grade 4 events	5464	6903	6815	8695
	1%	1%	1%	1%
grade 5 events	13153	14597	12931	15813
	3%	3%	2%	3%
grade 6 events	8355	10620	9233	10779
	2%	2%	1%	2%
grade 7 events	281891	276018	324748	306178
	73%	65%	68%	58%

## 2.2 Compared Parameters

Parameter	Planned	Actual	Parameter	Planned	Actual
Instrument	ACIS	ACIS	Obspar format version number	7	7
Detector	ACIS-0123	ACIS-0123	Obspar file type	PREDICTED	ACTUAL
Grating	NONE	NONE	Obspar update status	NONE	UPDATED
Data mode	VFAINT	VFAINT	Number of optional ACIS chips dropped	0	0
Observation mode	POINTING	POINTING	On-chip summing requested	N	N
[deg] Pointing RA	43.632830	43.59836754788318	Subarray requested	NONE	NONE
[deg] Pointing Dec	41.602825	41.59321298028704	Alternating exposures requested	N	N
[deg] Pointing Roll	169.987885	170.2194429101459	[s] Primary exposure time	0.000000	3.1
[mm] SIM focus pos	-0.782348	-0.7809083437167272			
[mm] SIM defocus	0	0.001439871863259334			
[mm] SIM translation stage pos	-233.592463	-233.5874344608287			
[mm] SIM translation stage offset	0	-0.005018542100998502			
[s] Observation start time (MET)	373434304.184000	373433031.95887			
Observation start date	2009-11-01T03:43:58	2009-11-01T03:23:51			
[s] Observation end time (MET)	373474304.184000	373475446.46101			
Observation end date	2009-11-01T14:50:38	2009-11-01T15:10:46			
Read mode	TIMED	TIMED			

## 2.3 Aspect



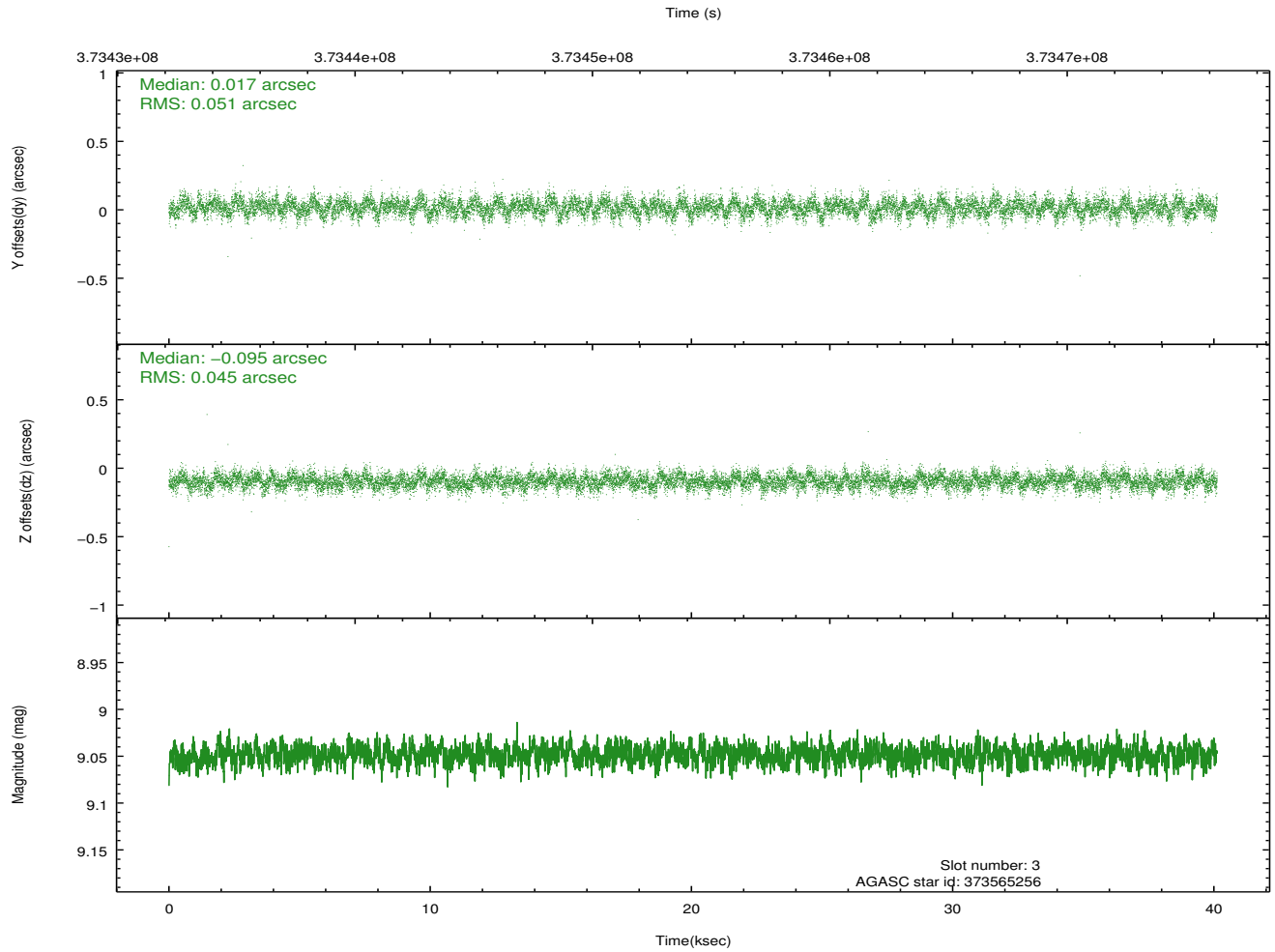
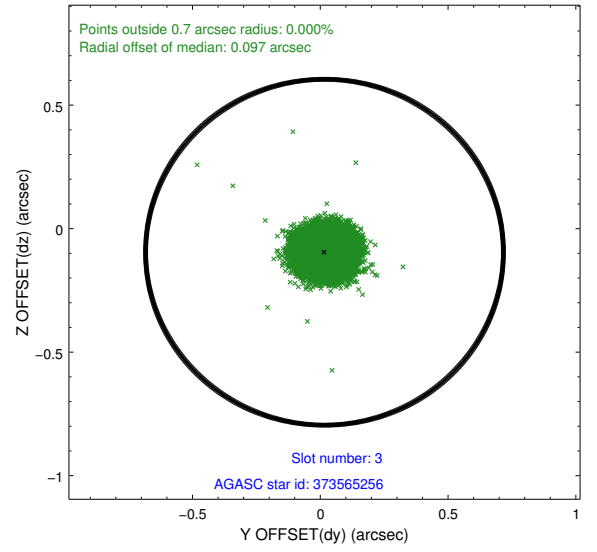
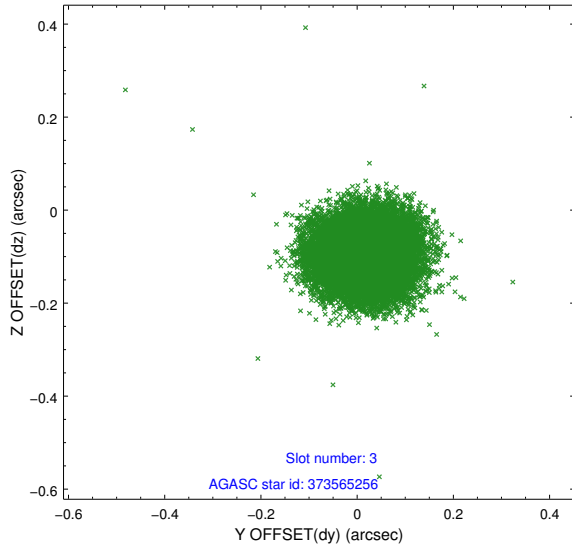


### Slot Statistics

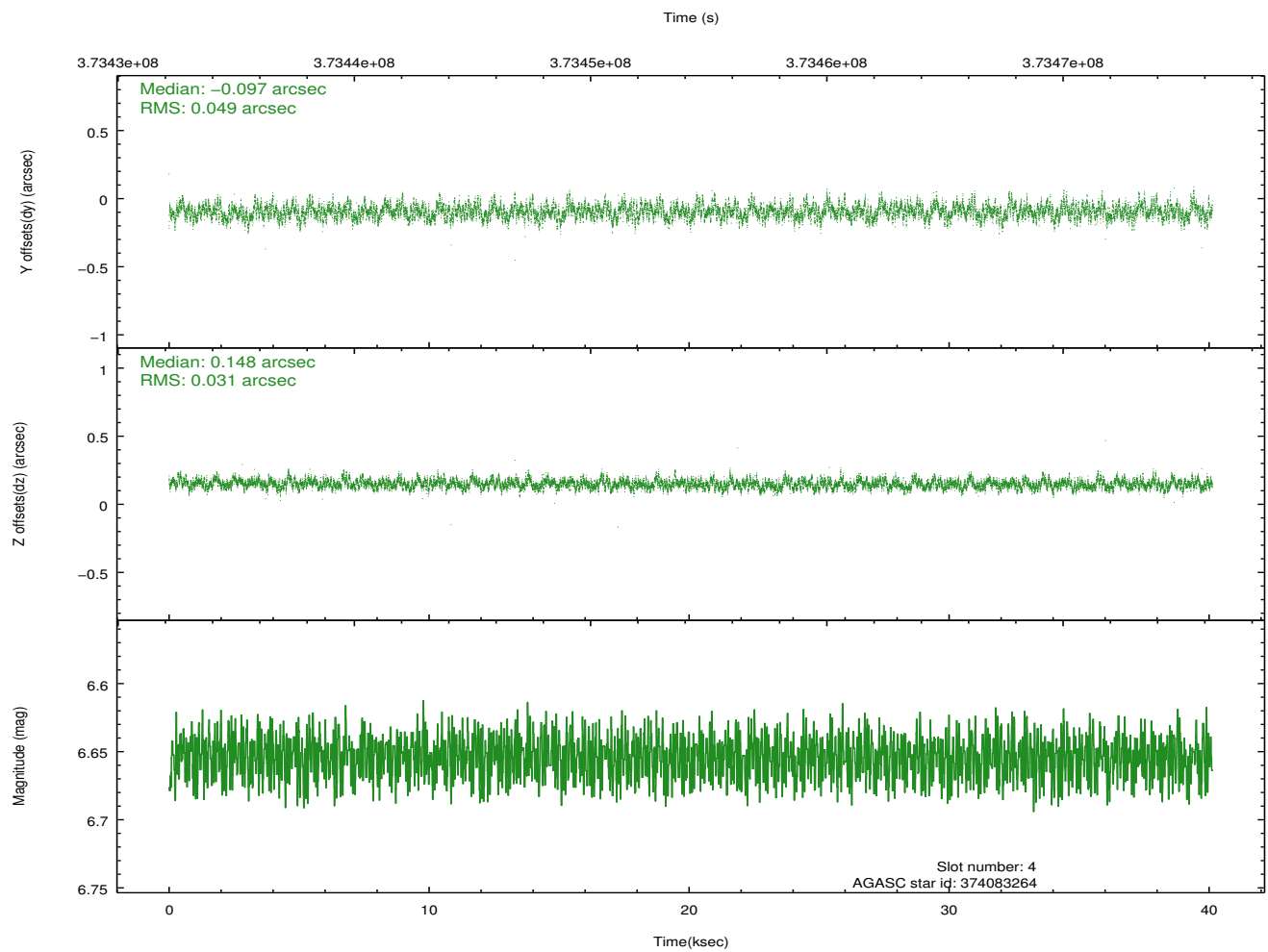
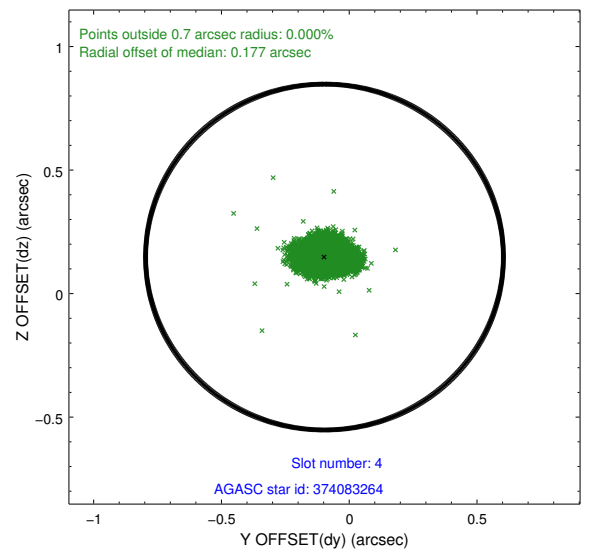
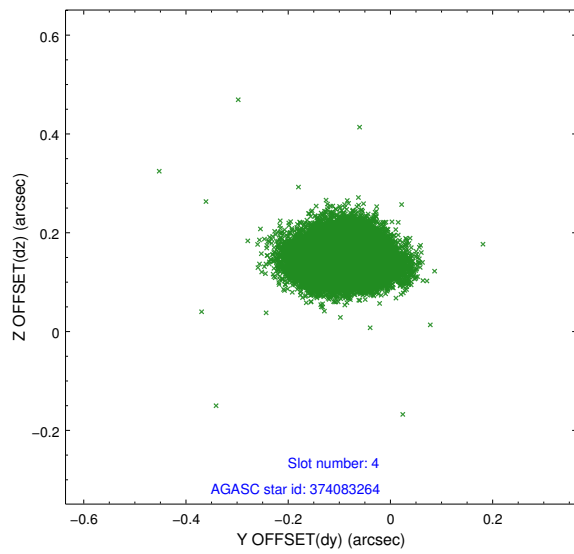
slot	status	id	mag	n_pts	med_dy	med_dz	dr1	dr2	ra	dec	mean_y	mean_z
0	FID	ACIS-I-2	6.94	9785	-0.088	-0.072	0.022	0.033	0.000000	0.000000	-768.38	-845.05
1	FID	ACIS-I-4	6.94	9786	0.209	0.073	0.012	0.018	0.000000	0.000000	2145.95	1061.28
2	FID	ACIS-I-5	7.02	9787	-0.222	0.067	0.018	0.027	0.000000	0.000000	-1822.34	1059.11
3	GUIDE	373565256	9.05	19557	0.017	-0.095	0.072	0.117	44.105113	41.168282	-1531.51	1314.69
4	GUIDE	374083264	6.65	19573	-0.097	0.148	0.060	0.100	43.093662	42.020961	1682.79	-1235.51
5	GUIDE	374087680	8.99	19547	-0.016	-0.002	0.093	0.147	43.266373	41.841880	1118.05	-678.25
6	GUIDE	373560576	8.90	19537	0.079	0.004	0.074	0.120	44.009880	41.184081	-1267.91	1305.34
7	GUIDE	374084672	9.20	19547	0.017	-0.057	0.096	0.158	42.731967	41.662055	2425.48	199.28

## 2.4 Star Slots

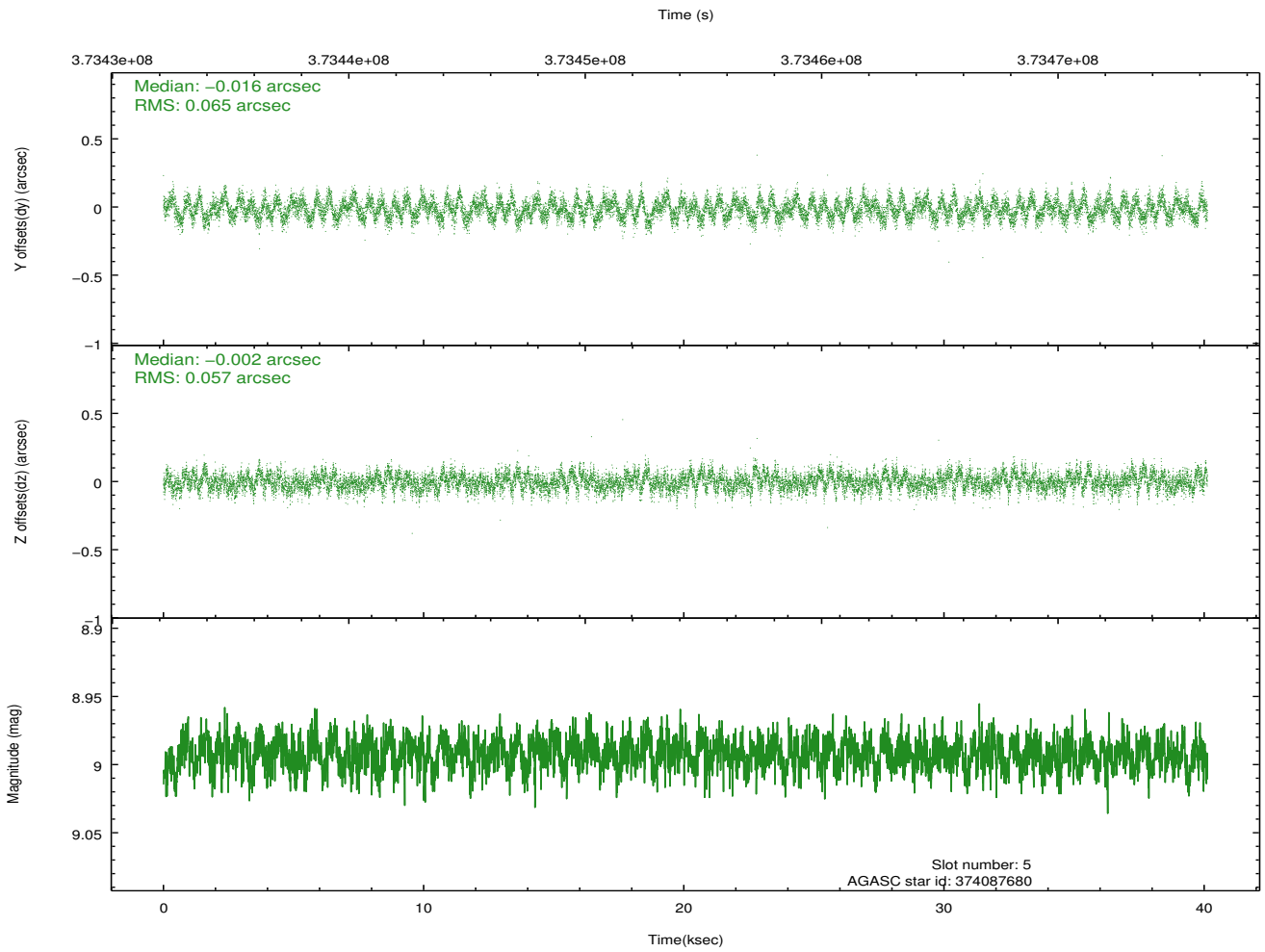
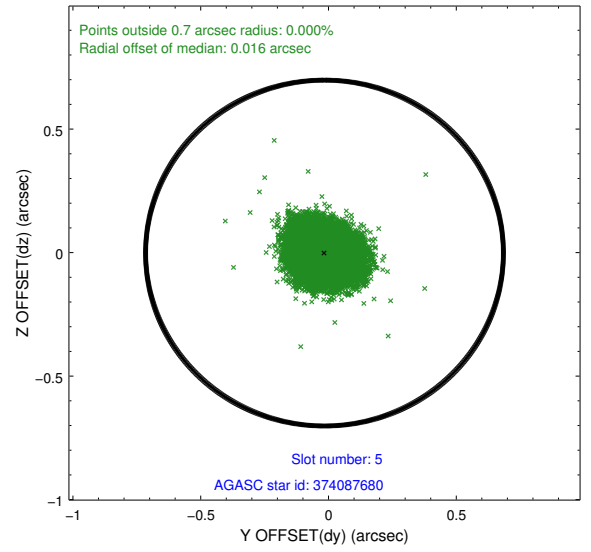
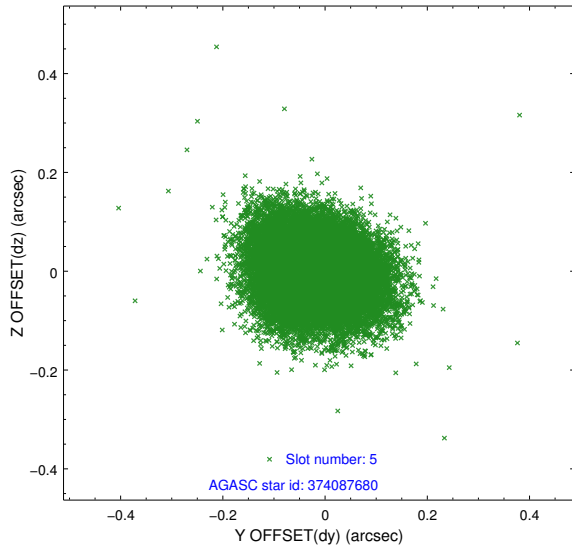
### 2.4.1 Slot 3



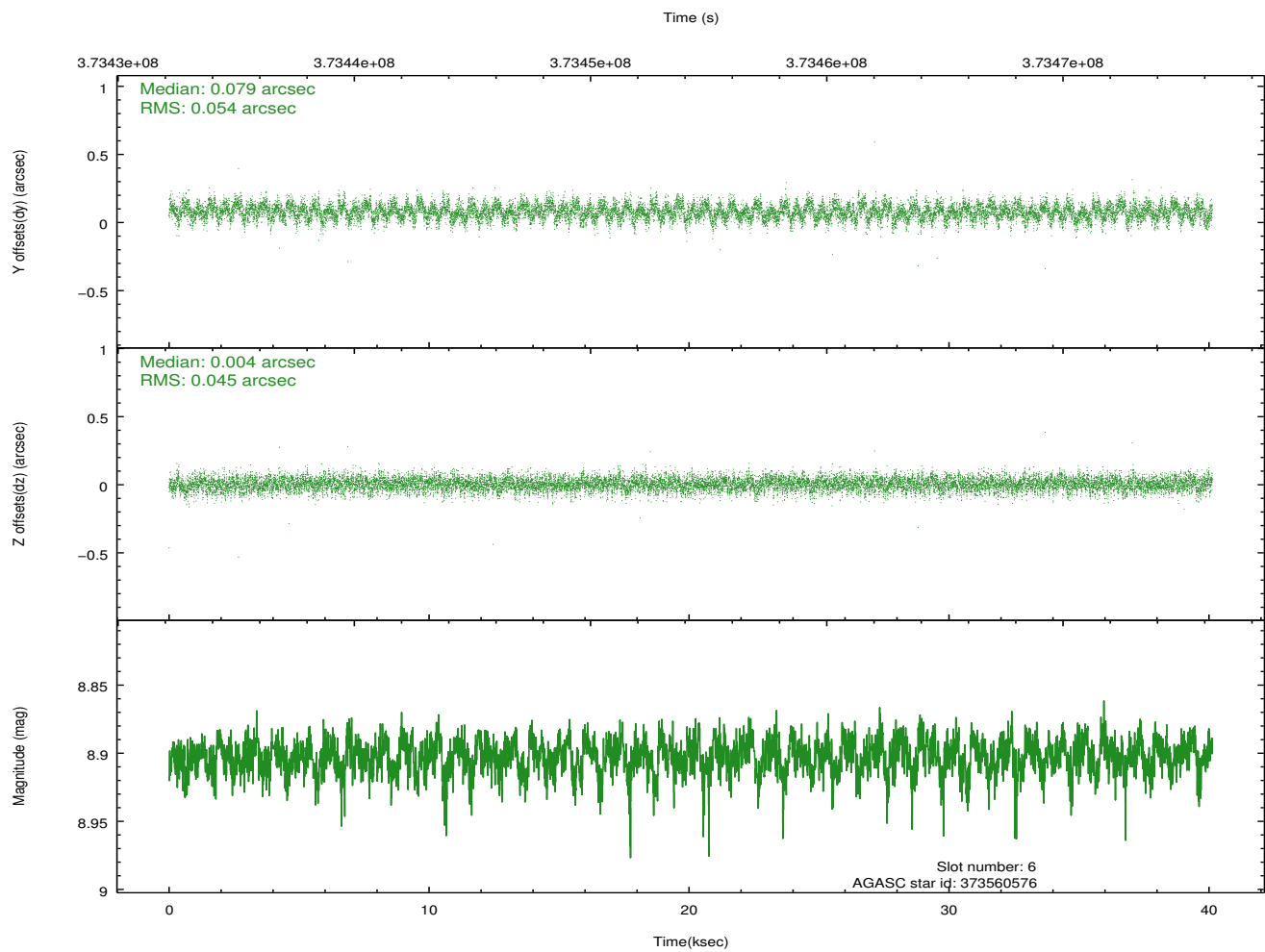
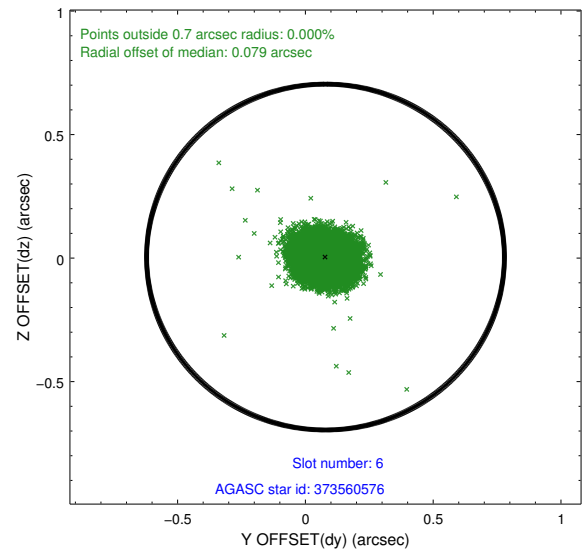
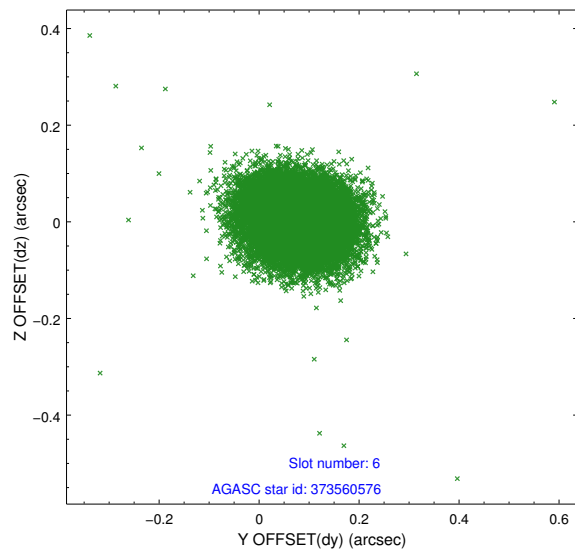
## 2.4.2 Slot 4



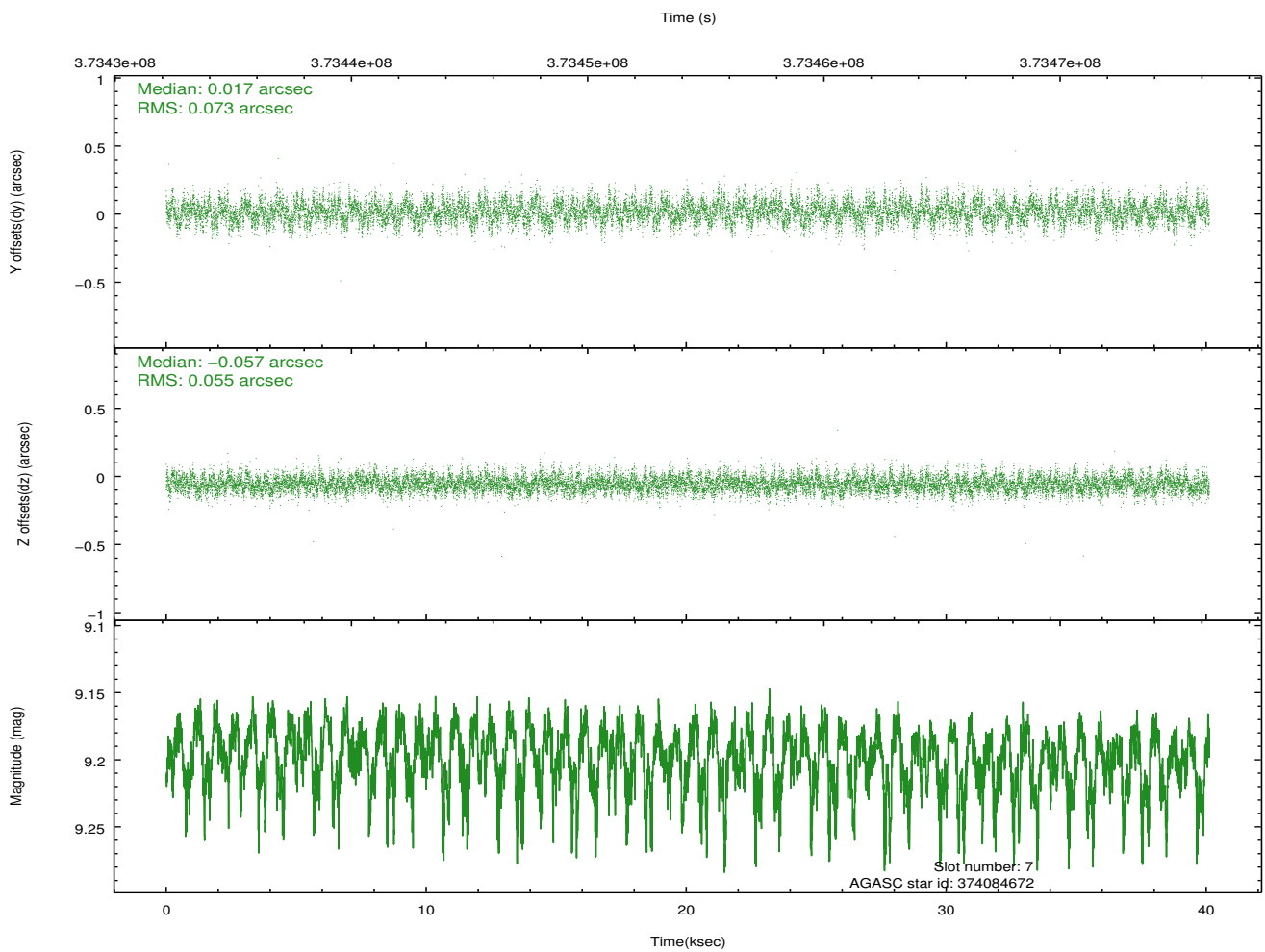
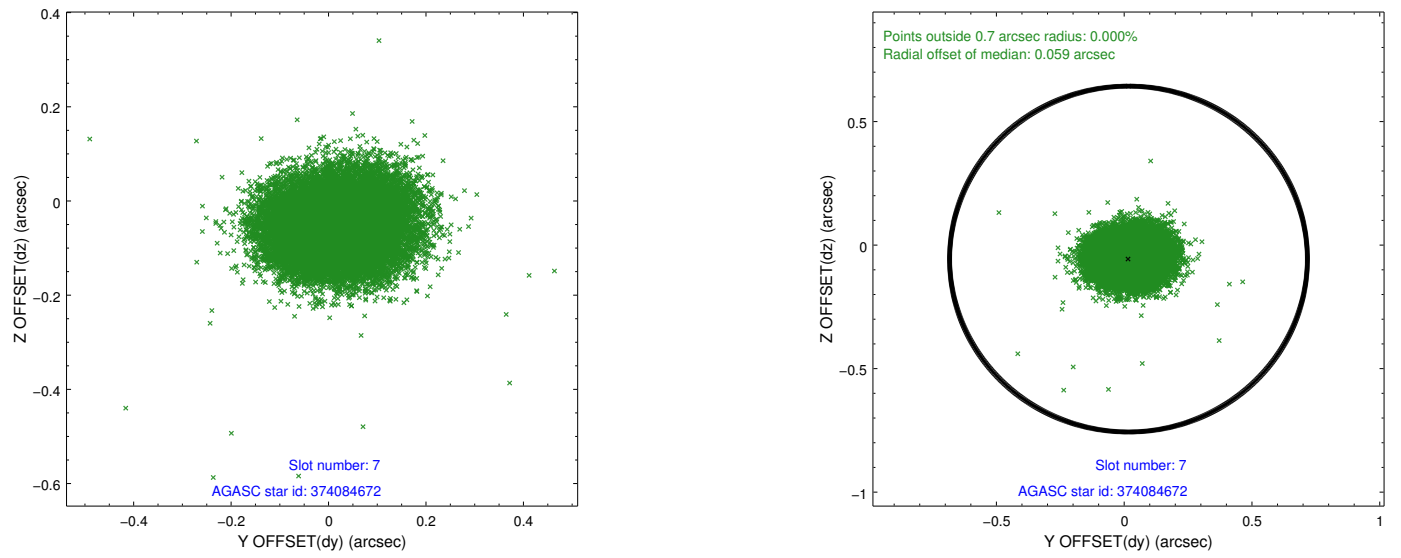
### 2.4.3 Slot 5



## 2.4.4 Slot 6

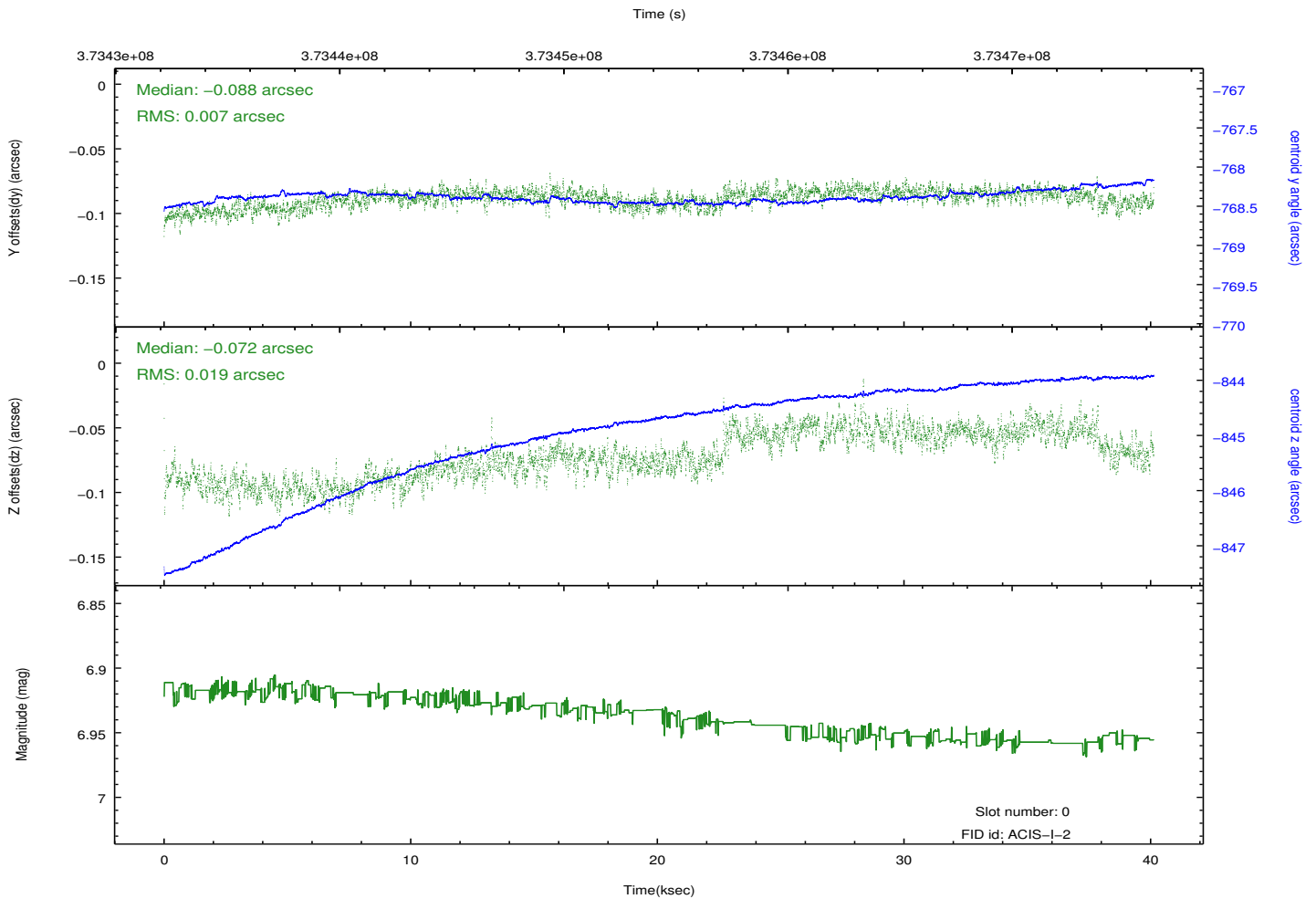
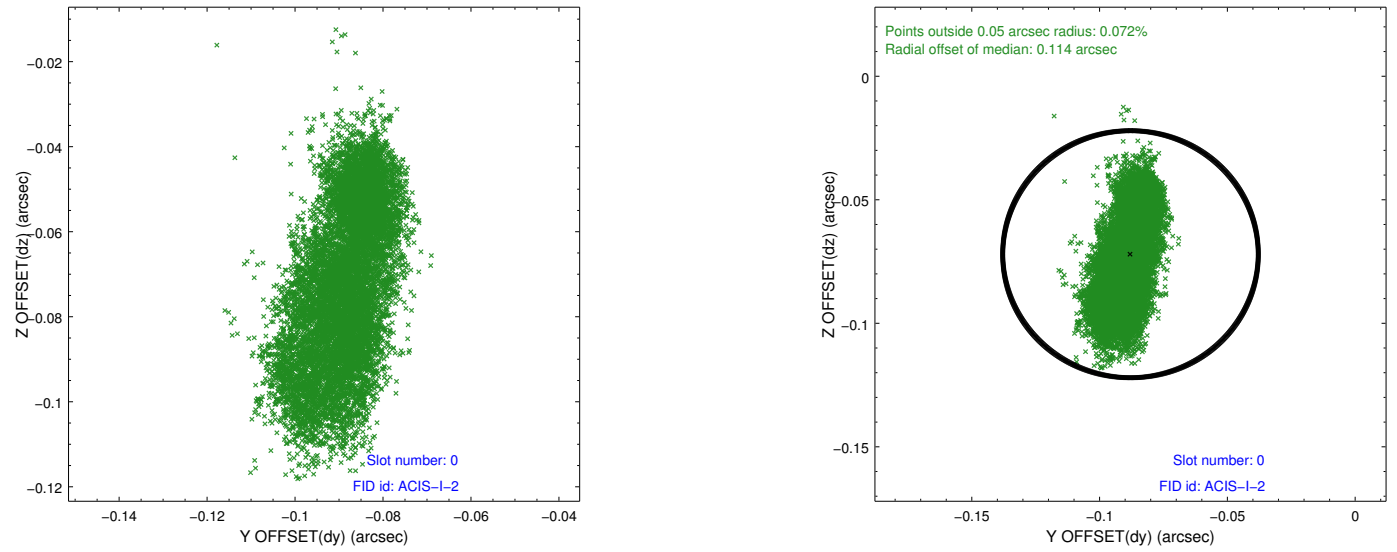


## 2.4.5 Slot 7

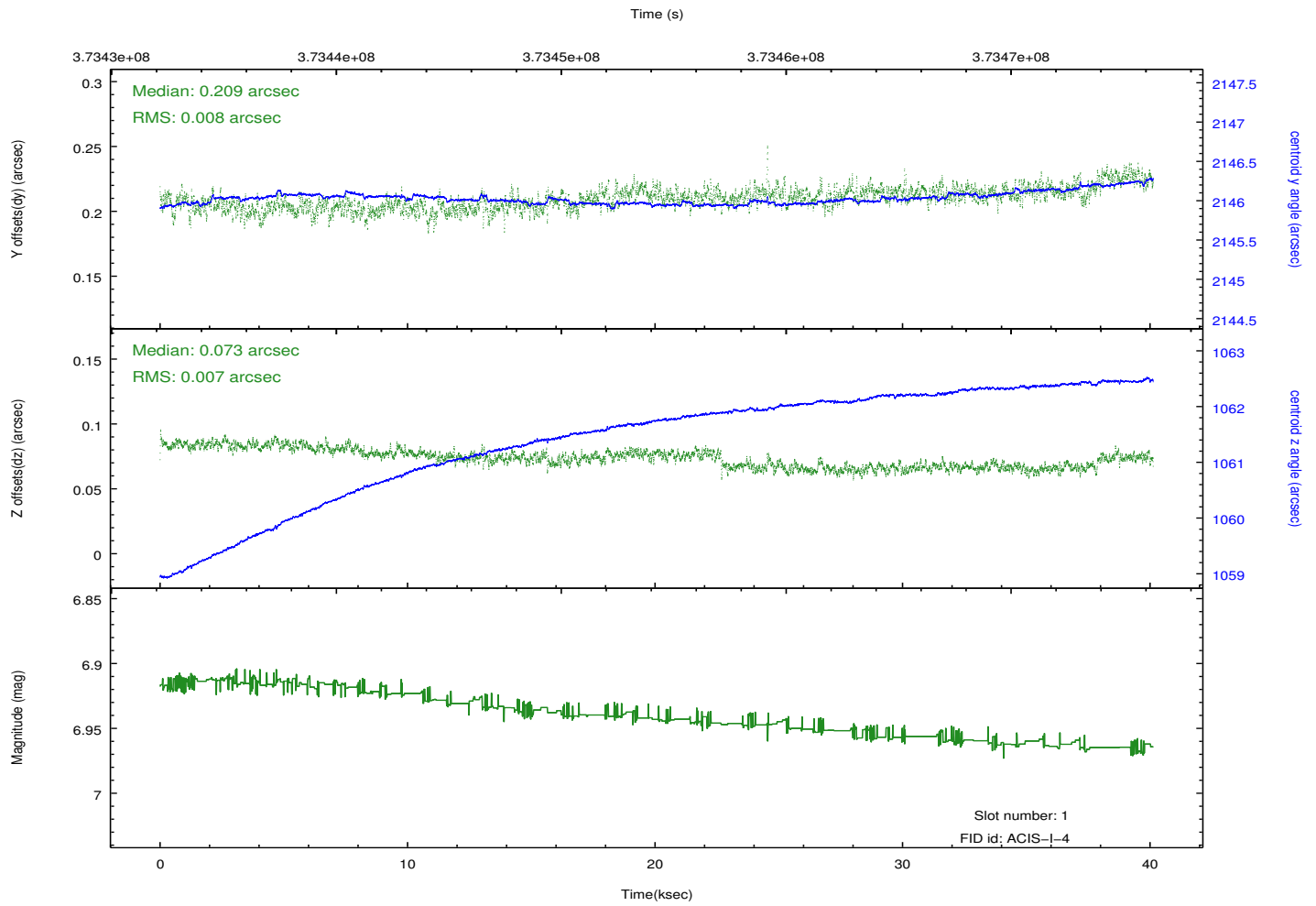
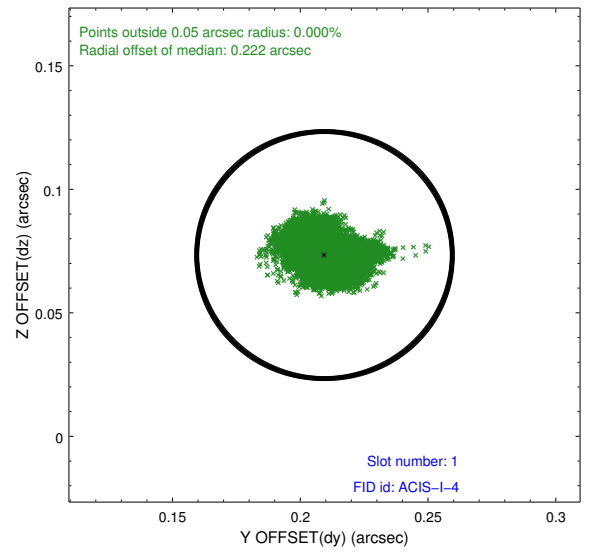
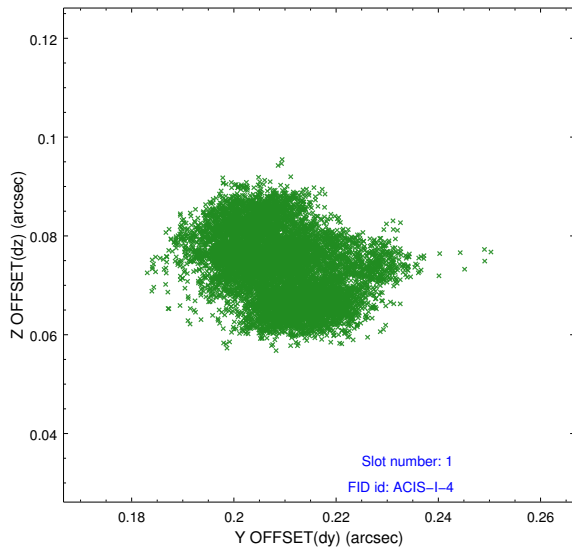


## 2.5 FID Slots

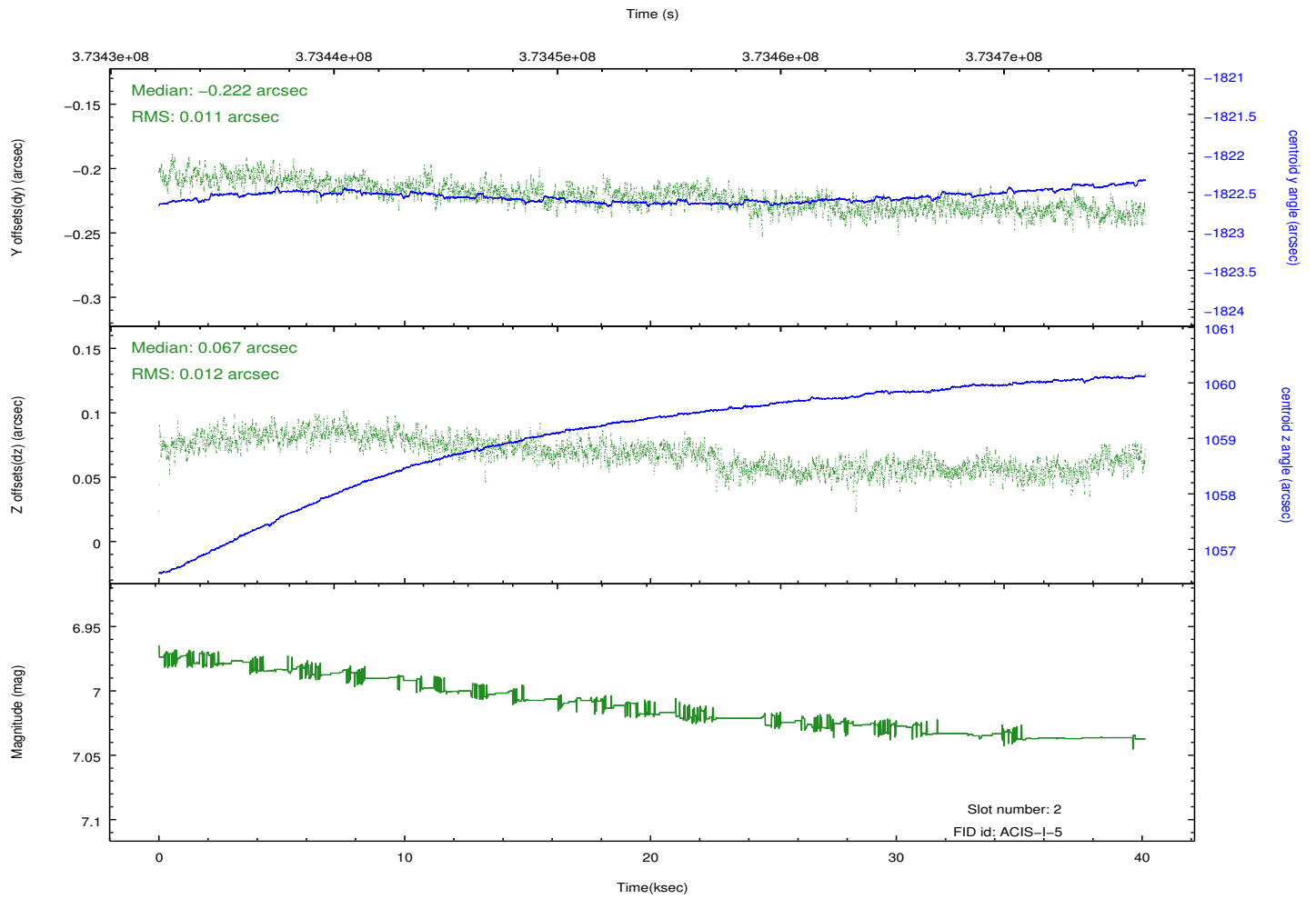
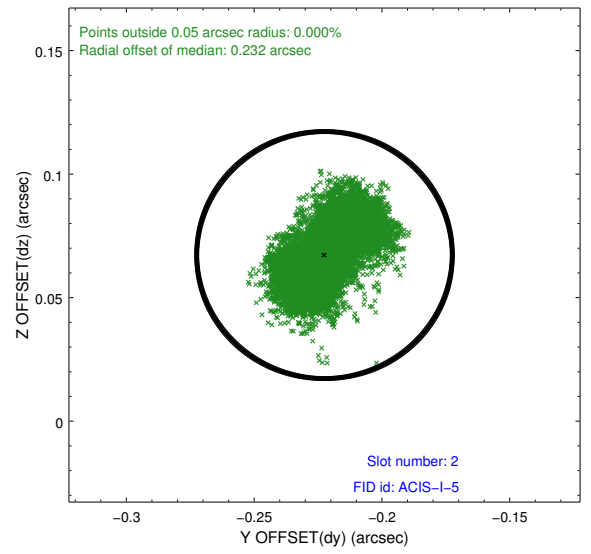
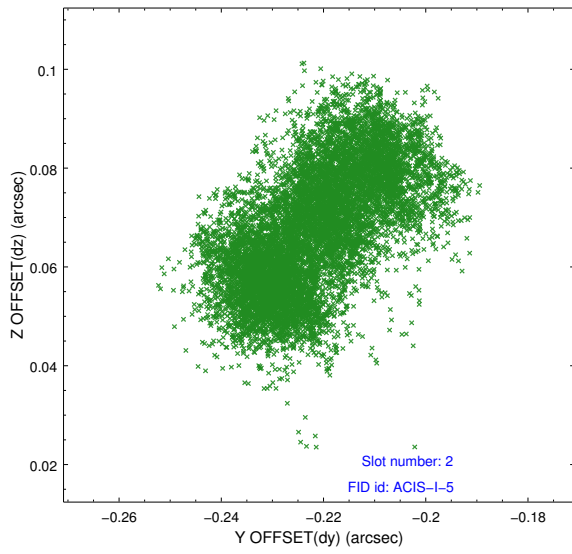
### 2.5.1 Slot 0



## 2.5.2 Slot 1



### 2.5.3 Slot 2



# A Summary

## A.1 Status

V&V Scientist	Beth Sundheim
V&V Date (YYYY-MM-DD)	2012.06.20
V&V Edition	1
V&V Disposition and Status	OK
V&V Charge Time	40.1201592

## A.2 Comments

Joint proposal with NRAO.