

V&V Reference Report

L2 ASCDS Version : 8.4.5

Observation 11727 - L2 Version 2
Chandra X-Ray Center

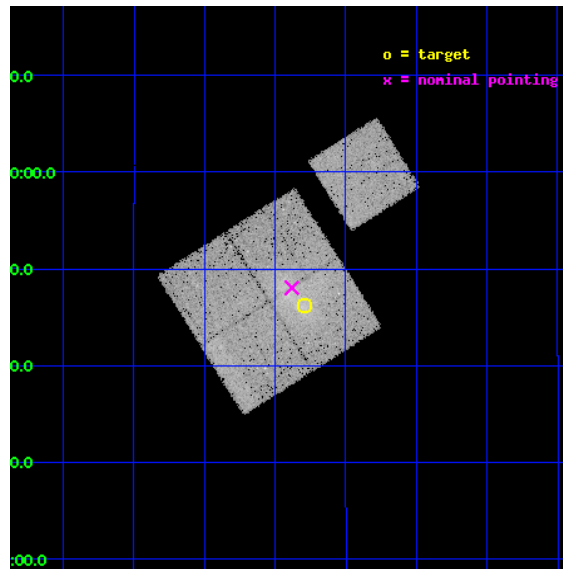
L2 Processing Date : Jun 17 2012

Contents

1	Front	2
2	OBI	3
2.1	OBI	3
2.1.1	Images	3
2.1.2	Bias	3
2.1.3	Parameters	4
2.1.4	Events	4
2.2	Compared Parameters	5
2.3	Aspect	6
2.4	Star Slots	9
2.4.1	Slot 3	9
2.4.2	Slot 4	10
2.4.3	Slot 5	11
2.4.4	Slot 6	12
2.4.5	Slot 7	13
2.5	FID Slots	14
2.5.1	Slot 0	14
2.5.2	Slot 1	15
2.5.3	Slot 2	16
A	Summary	17
A.1	Status	17
A.2	Comments	17

1 Front

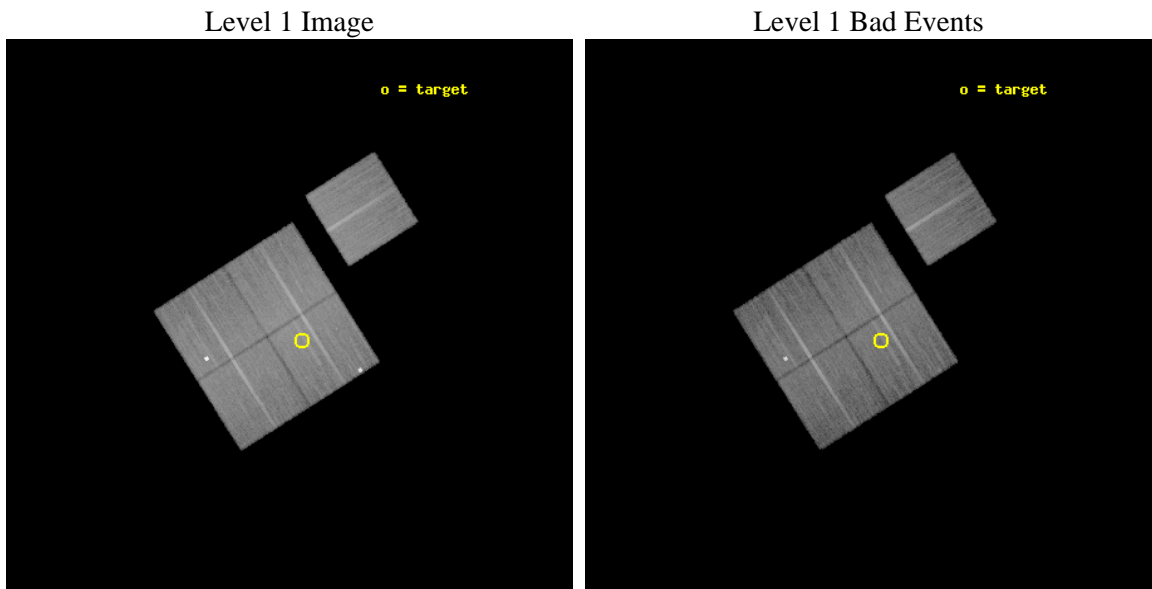
seq_num	800867	Sequence number
obs_id	11727	Observation id
title	Cosmology with a complete sample of 0.15	Proposal title
observer	Prof. Massimiliano Bonamente	Principal investigator
object	ZwCl 5247	Source name
dtcycle	0	
cycle	P	events from which exps? Prim/Second/Both
ra_targ	188.573333	Observer's specified target RA [deg]
dec_targ	9.77	Observer's specified target Dec [deg]
ra_nom	188.59538783173	Nominal RA [deg]
dec_nom	9.8008493465748	Nominal Dec [deg]
roll_nom	57.682512485908	Nominal Roll [deg]
revision	2	Processing version of data
ontime	21126.459162235	Sum of GTIs [s]
livetime	20850.426420208	Livetime [s]
ontime0	21129.600162506	Sum of GTIs [s]
ontime1	21123.318212032	Sum of GTIs [s]
ontime2	21123.318211973	Sum of GTIs [s]
ontime3	21126.459162235	Sum of GTIs [s]
ontime6	21123.318241894	Sum of GTIs [s]
l2events	89801	Number of level 2 events



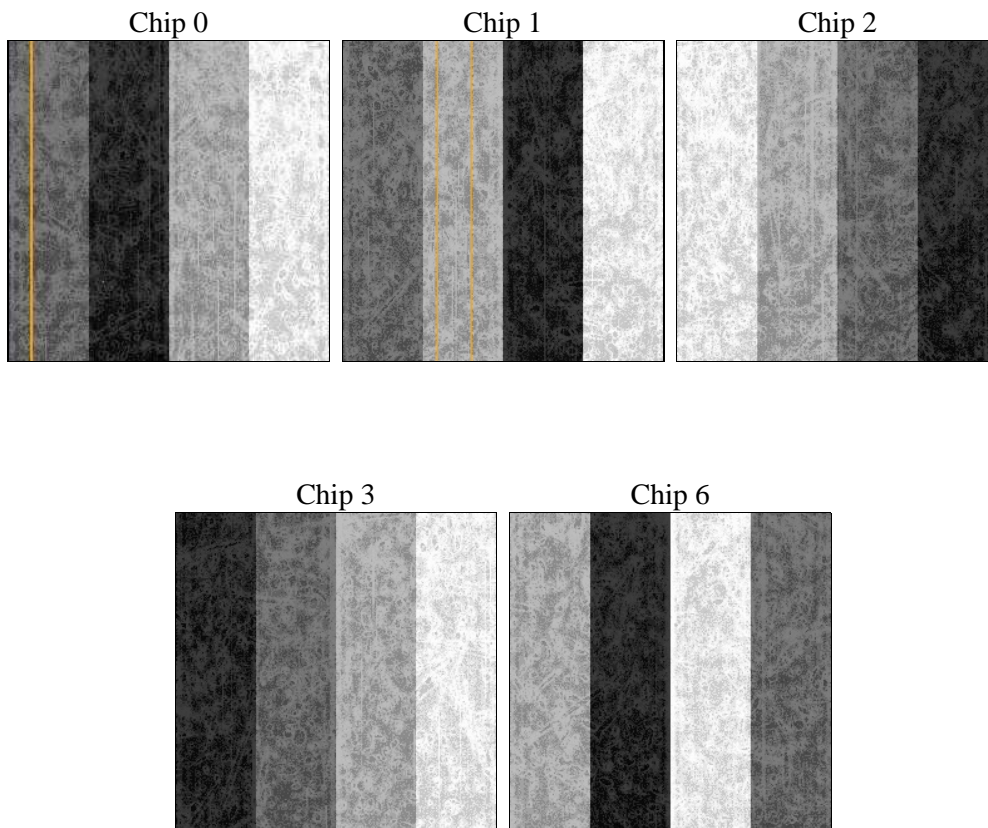
2 OBI

2.1 OBI

2.1.1 Images



2.1.2 Bias



2.1.3 Parameters

obi_num	1	Obi number	sched_exp_time	21000.672000	[s] Scheduled observation exposure time
ascdsver	8.4.5	Processing system revision	ontime	21126.459162235	Sum of GTIs [s]
caldbver	4.4.10	 	ontime0	21129.600162506	Sum of GTIs [s]
date	2012-06-17T05:16:59	Date and time of file creation	ontime1	21123.318212032	Sum of GTIs [s]
revision	2	Processing version of data	ontime2	21123.318211973	Sum of GTIs [s]
			ontime3	21126.459162235	Sum of GTIs [s]
			ontime6	21123.318241894	Sum of GTIs [s]
			l1events	976133	Number of level 1 events

2.1.4 Events

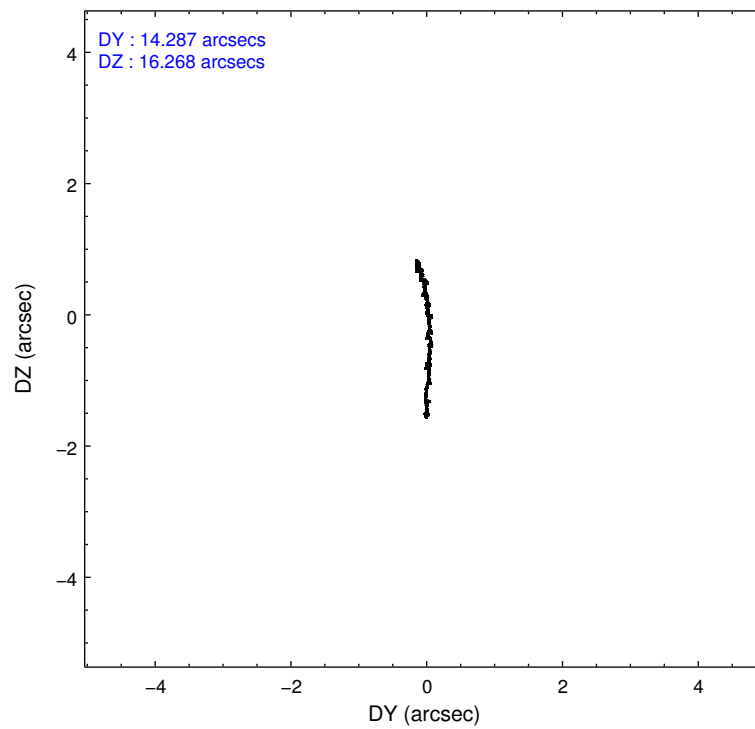
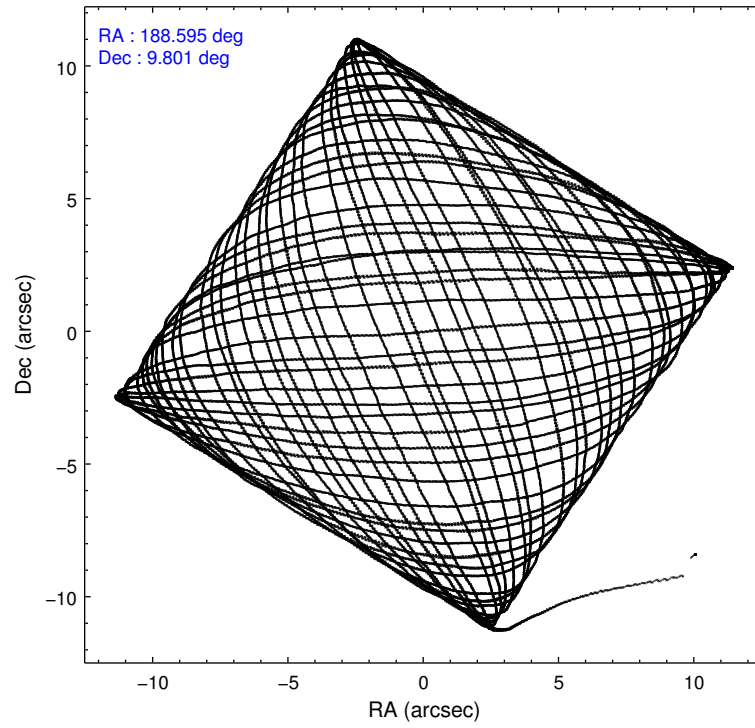
	ccd 0	ccd 1	ccd 2	ccd 3	ccd 6
level 1 events	199589	175502	202752	205742	192548
rejected events	167361	153288	181831	173592	172803
rejected %	83%	87%	89%	84%	89%

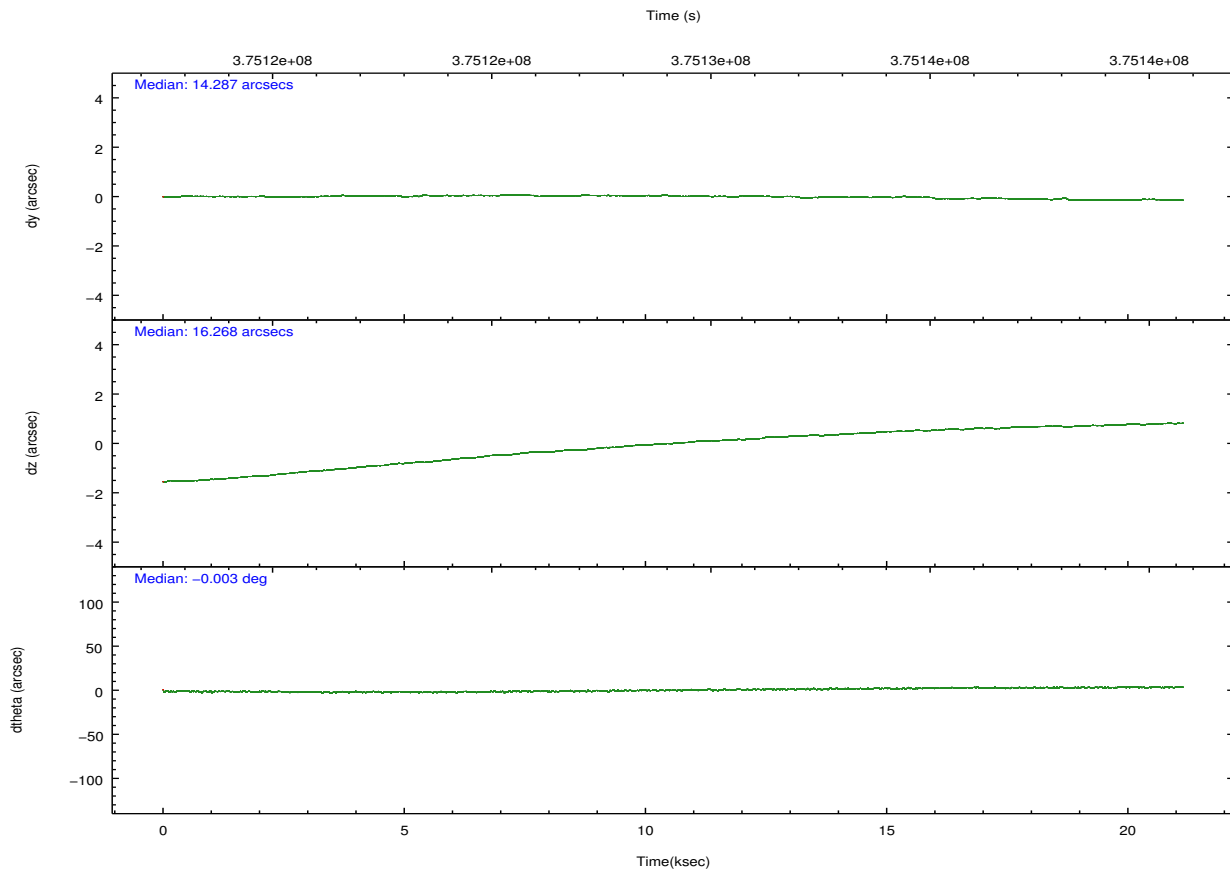
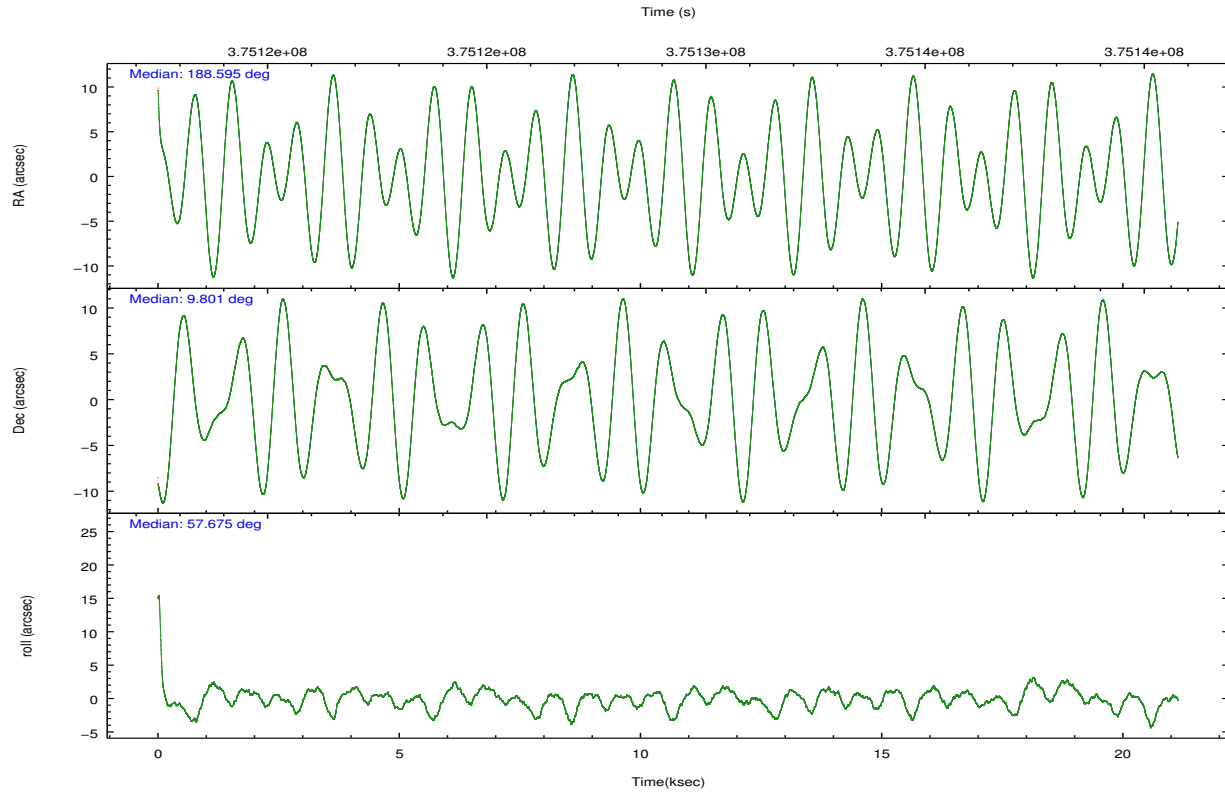
	ccd 0	ccd 1	ccd 2	ccd 3	ccd 6
grade 0 events	13599	8549	8797	11444	7279
	6%	4%	4%	5%	3%
grade 1 events	6697	109	115	153	102
	3%	0%	0%	0%	0%
grade 2 events	11255	5084	4809	13142	4466
	5%	2%	2%	6%	2%
grade 3 events	2188	2266	2078	2235	2124
	1%	1%	1%	1%	1%
grade 4 events	2067	2407	2127	2046	2068
	1%	1%	1%	0%	1%
grade 5 events	7016	7650	6659	8078	7780
	3%	4%	3%	3%	4%
grade 6 events	3849	4353	3559	3879	4231
	1%	2%	1%	1%	2%
grade 7 events	152918	145084	174608	164765	164498
	76%	82%	86%	80%	85%

2.2 Compared Parameters

Parameter	Planned	Actual	Parameter	Planned	Actual
Instrument	ACIS	ACIS	Obspar format version number	7	7
Detector	ACIS-01236	ACIS-01236	Obspar file type	PREDICTED	ACTUAL
Grating	NONE	NONE	Obspar update status	NONE	UPDATED
Data mode	VFAINT	VFAINT	Number of optional ACIS chips dropped	0	0
Observation mode	POINTING	POINTING	On-chip summing requested	N	N
[deg] Pointing RA	188.594376	188.5953878317307	Subarray requested	NONE	NONE
[deg] Pointing Dec	9.773385	9.800849346574839	Alternating exposures requested	N	N
[deg] Pointing Roll	57.473994	57.68251248590787	[s] Primary exposure time	0.000000	3.1
[mm] SIM focus pos	-0.782348	-0.7809083437167272			
[mm] SIM defocus	0	0.001439871863259334			
[mm] SIM translation stage pos	-227.592463	-227.5958210972112			
[mm] SIM translation stage offset	-6	-5.996631905718488			
[s] Observation start time (MET)	375118700.184000	375117500.13128			
Observation start date	2009-11-20T15:37:14	2009-11-20T15:18:20			
[s] Observation end time (MET)	375139701.184000	375139930.20741			
Observation end date	2009-11-20T21:27:15	2009-11-20T21:32:10			
Read mode	TIMED	TIMED			

2.3 Aspect



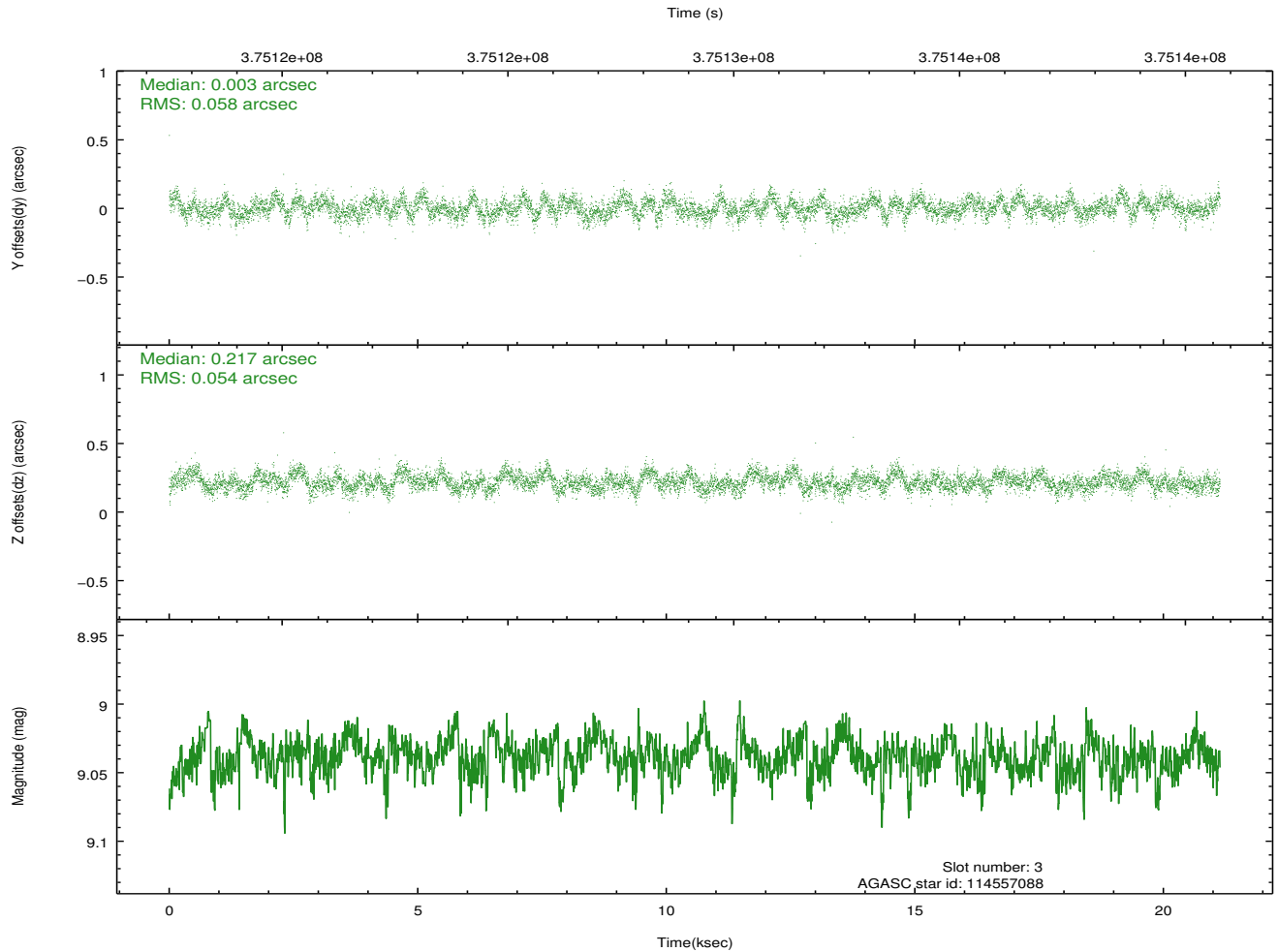
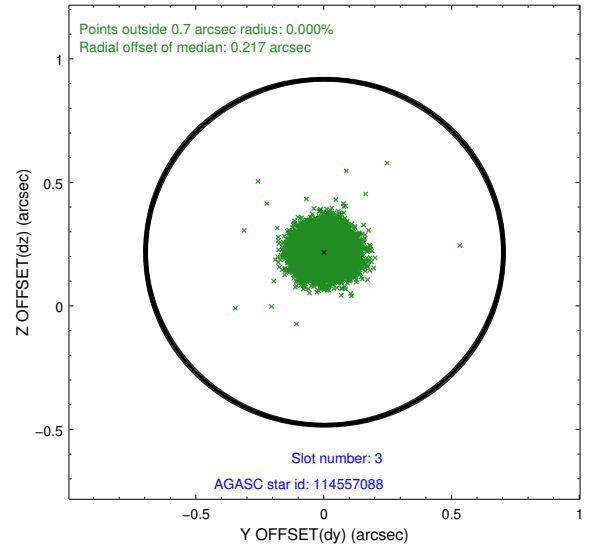
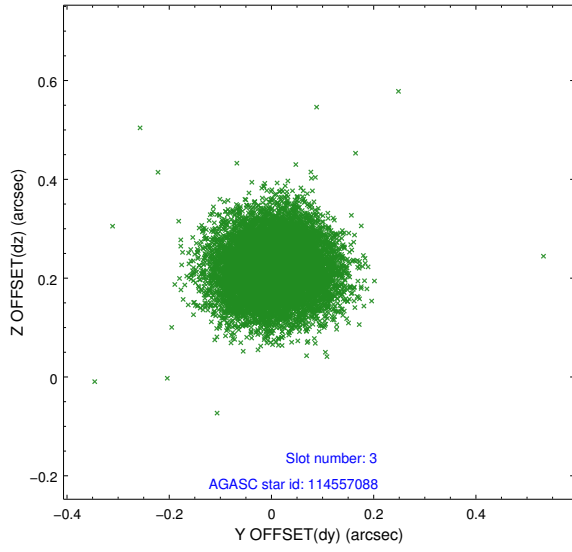


Slot Statistics

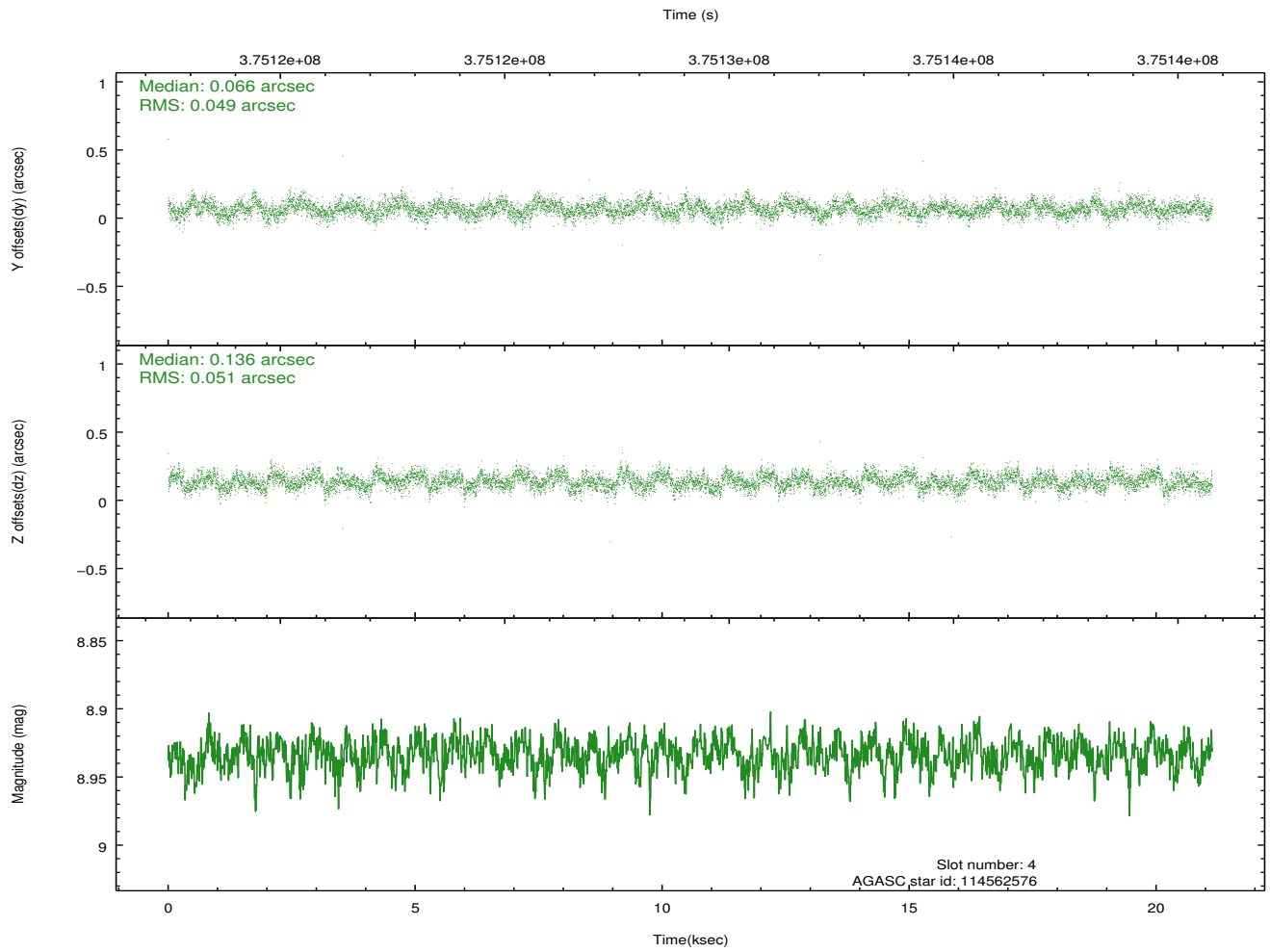
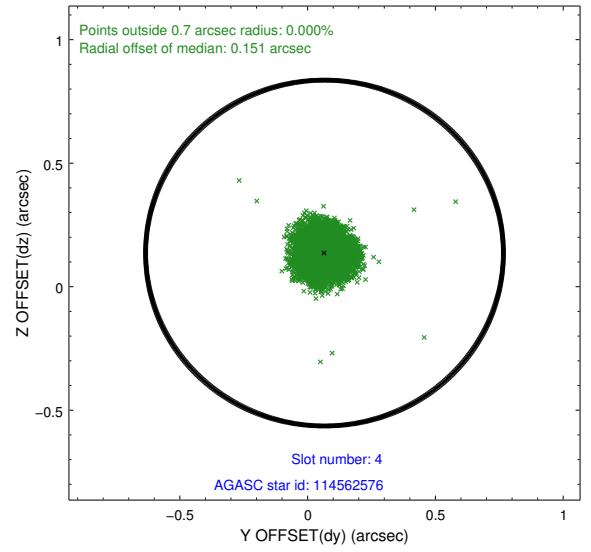
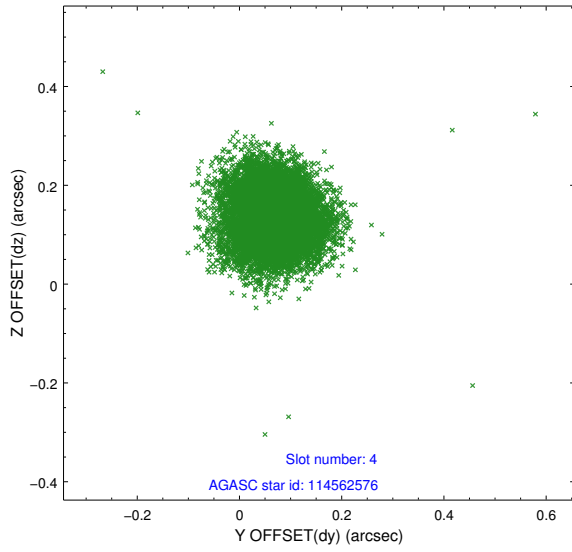
slot	status	id	mag	n_pts	med_dy	med_dz	dr1	dr2	ra	dec	mean_y	mean_z
0	FID	ACIS-I-1	7.07	5156	0.097	-0.060	0.025	0.033	0.000000	0.000000	925.21	-962.88
1	FID	ACIS-I-5	7.05	5155	-0.281	0.079	0.012	0.018	0.000000	0.000000	-1823.21	934.61
2	FID	ACIS-I-6	7.07	5156	0.093	0.051	0.017	0.026	0.000000	0.000000	390.54	1579.30
3	GUIDE	114557088	9.04	10305	0.003	0.217	0.085	0.135	188.466353	9.531660	-977.66	-84.41
4	GUIDE	114562576	8.93	10303	0.066	0.136	0.075	0.120	188.579291	9.672237	-335.59	-150.35
5	GUIDE	114957816	6.22	10310	-0.298	-0.469	0.090	0.131	188.261994	10.295673	952.35	2004.19
6	GUIDE	114692224	9.37	10301	0.268	0.214	0.118	0.188	189.020175	9.229887	-834.80	-2327.68
7	GUIDE	115089624	9.66	10300	-0.038	-0.098	0.136	0.235	189.471947	10.002512	2372.39	-2177.50

2.4 Star Slots

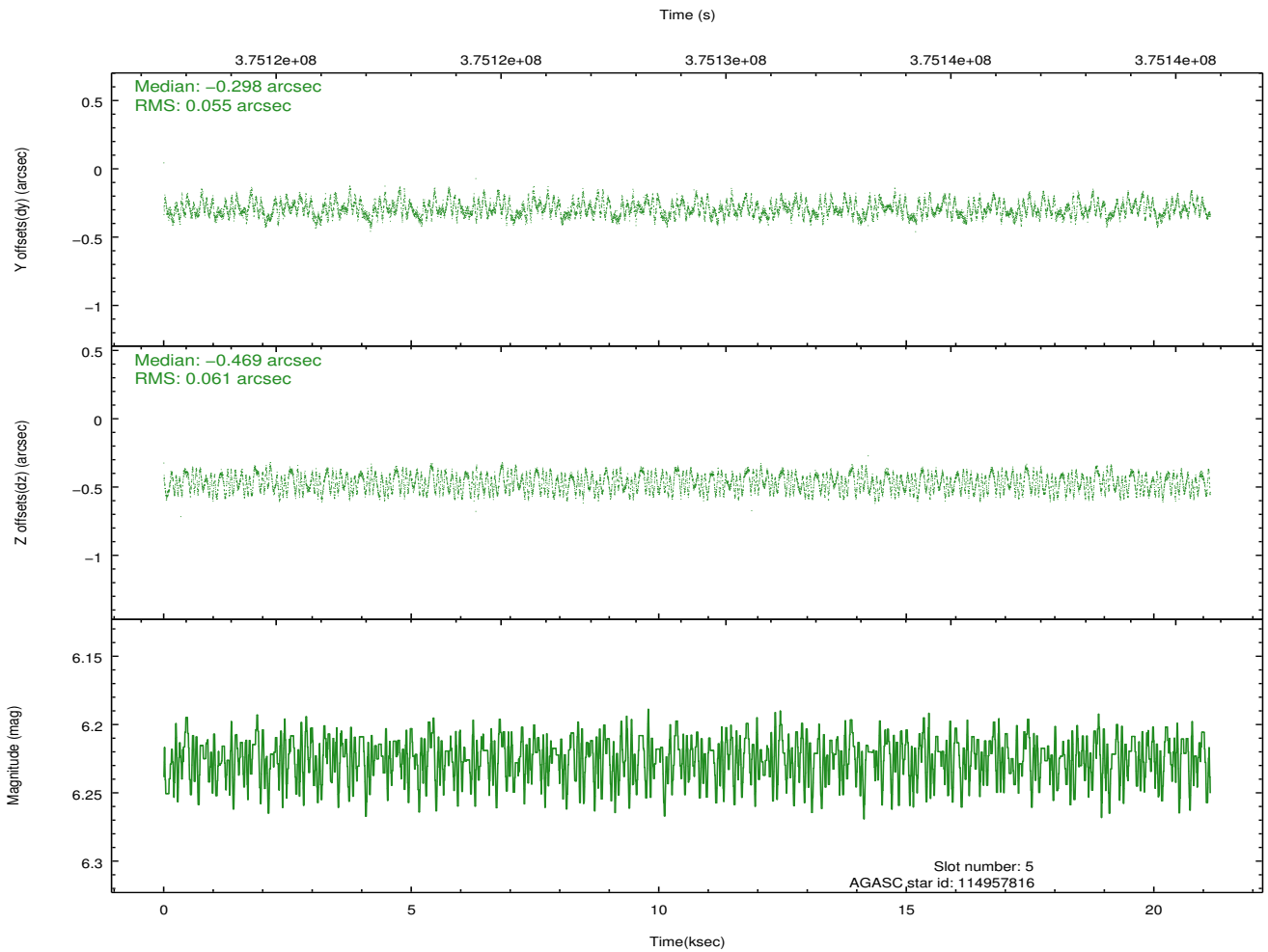
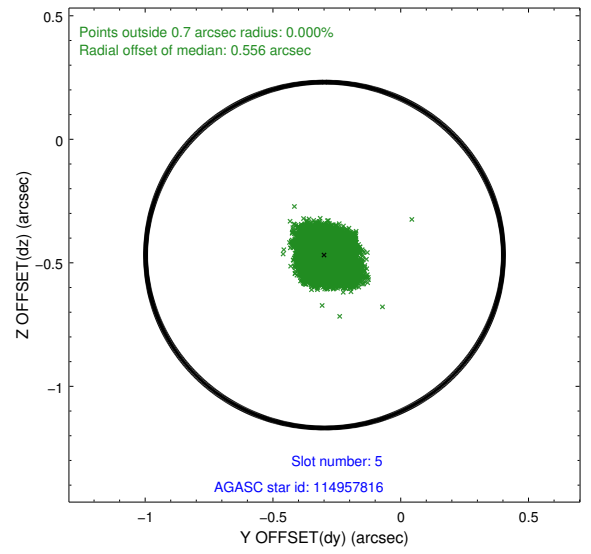
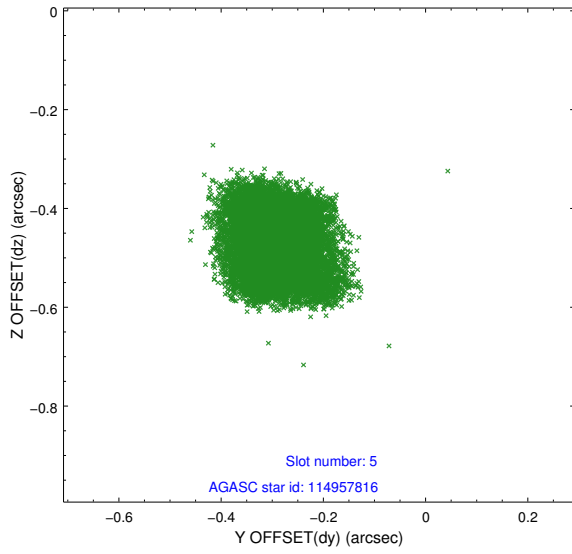
2.4.1 Slot 3



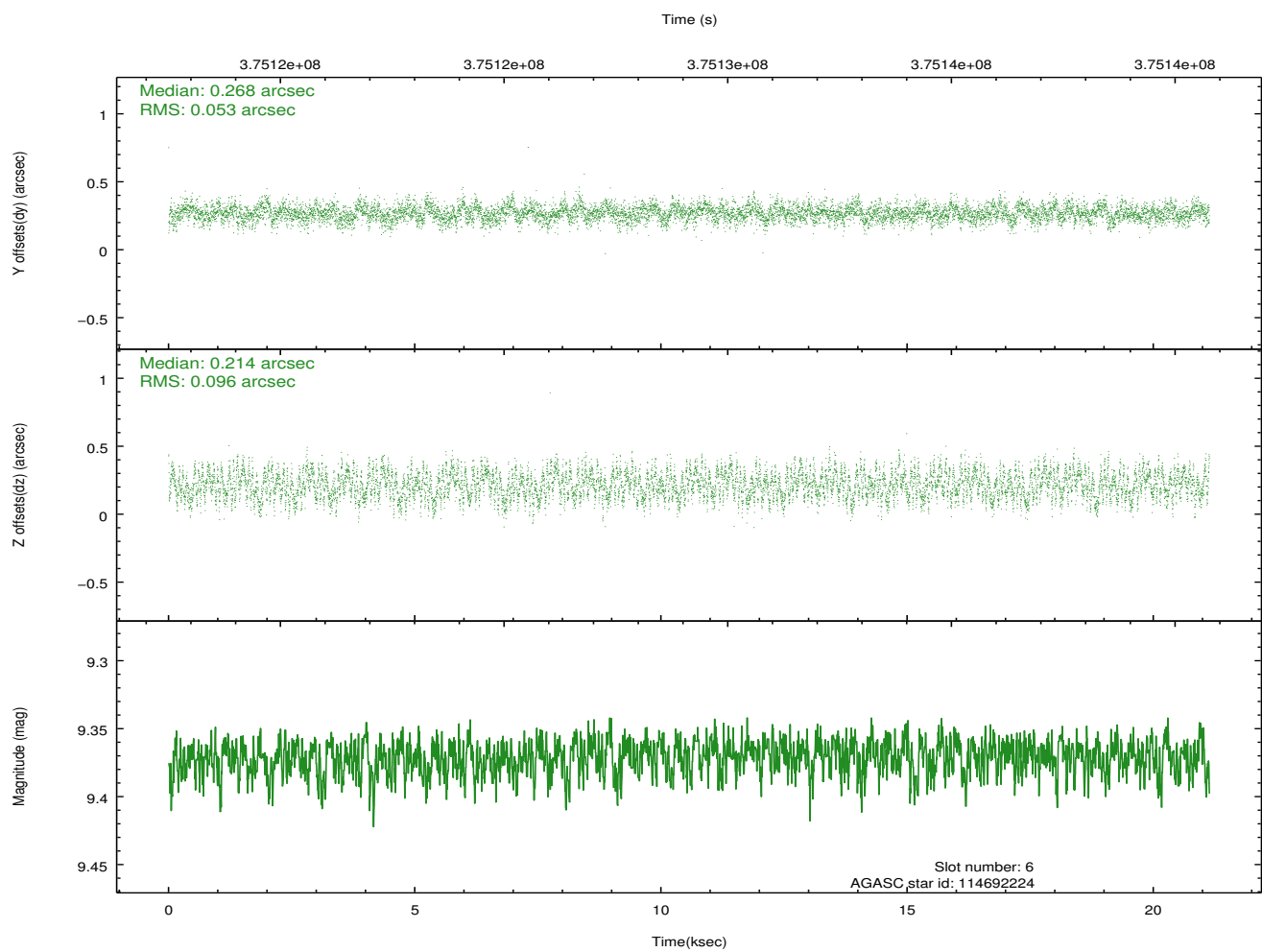
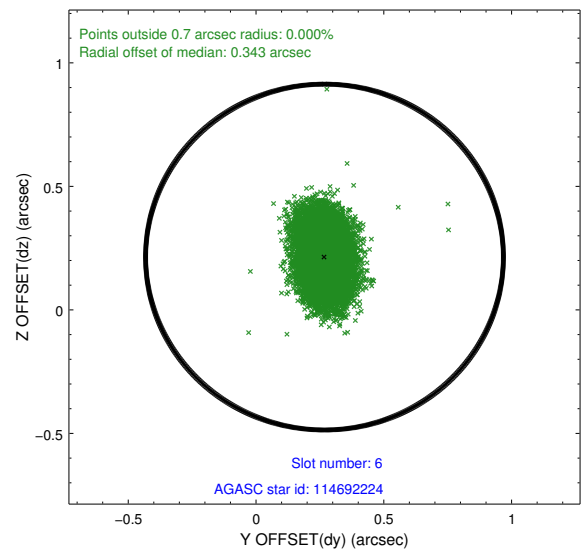
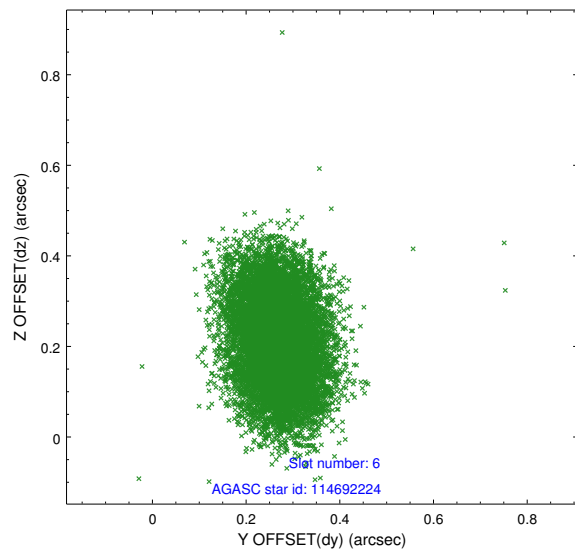
2.4.2 Slot 4



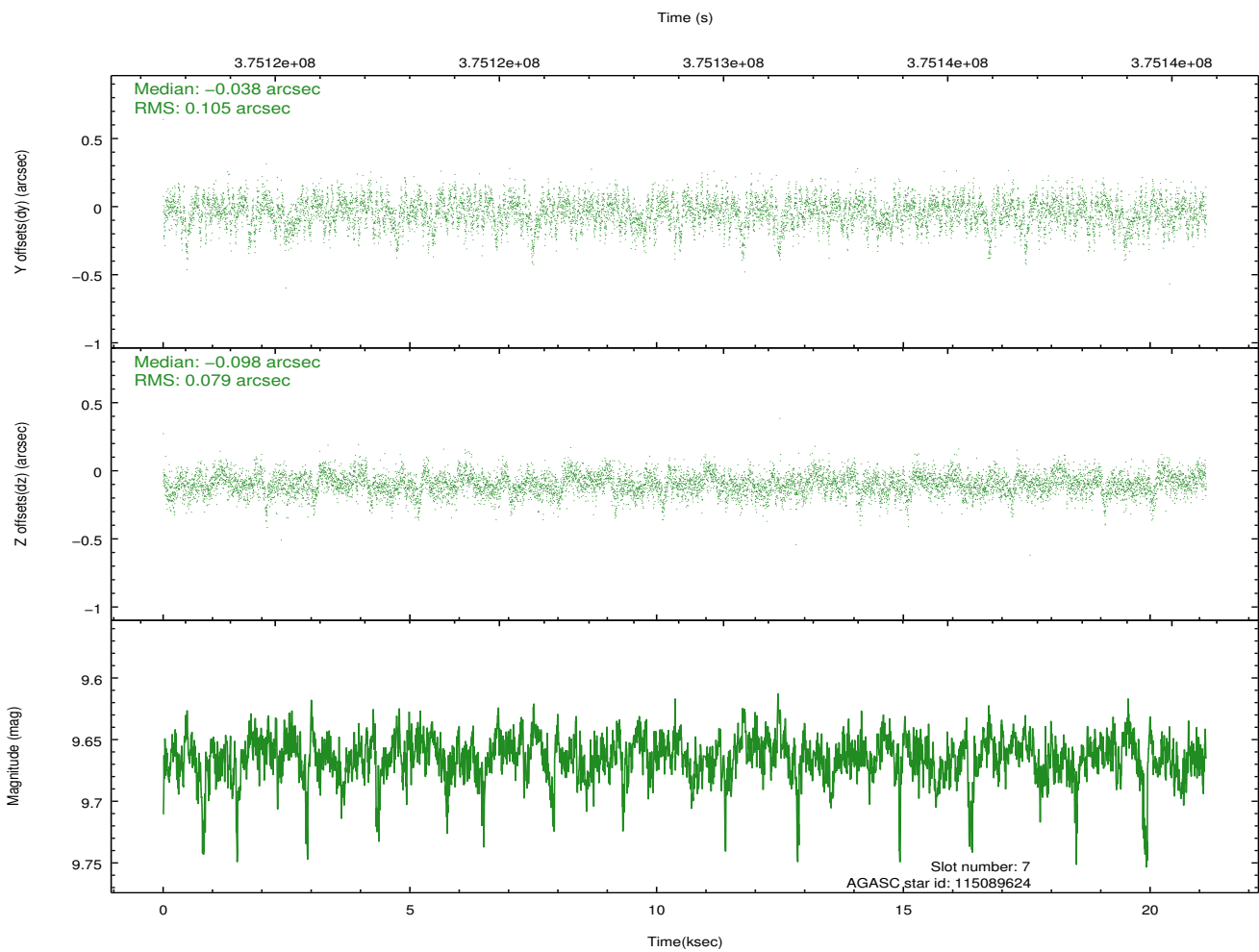
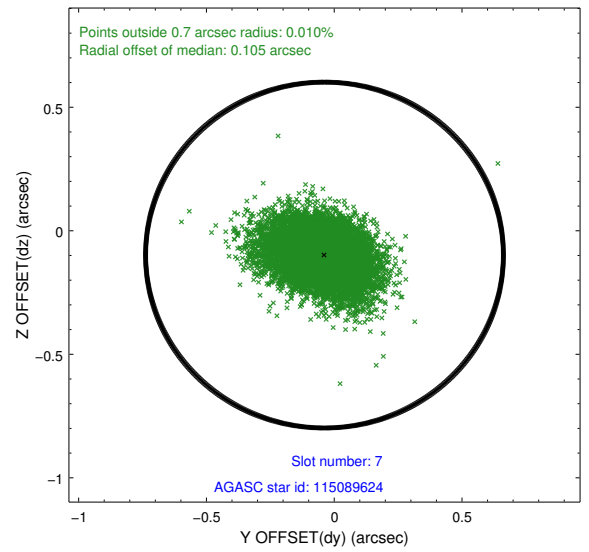
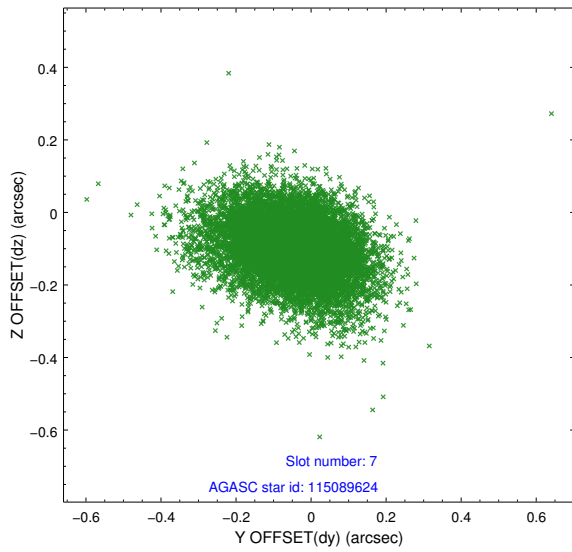
2.4.3 Slot 5



2.4.4 Slot 6

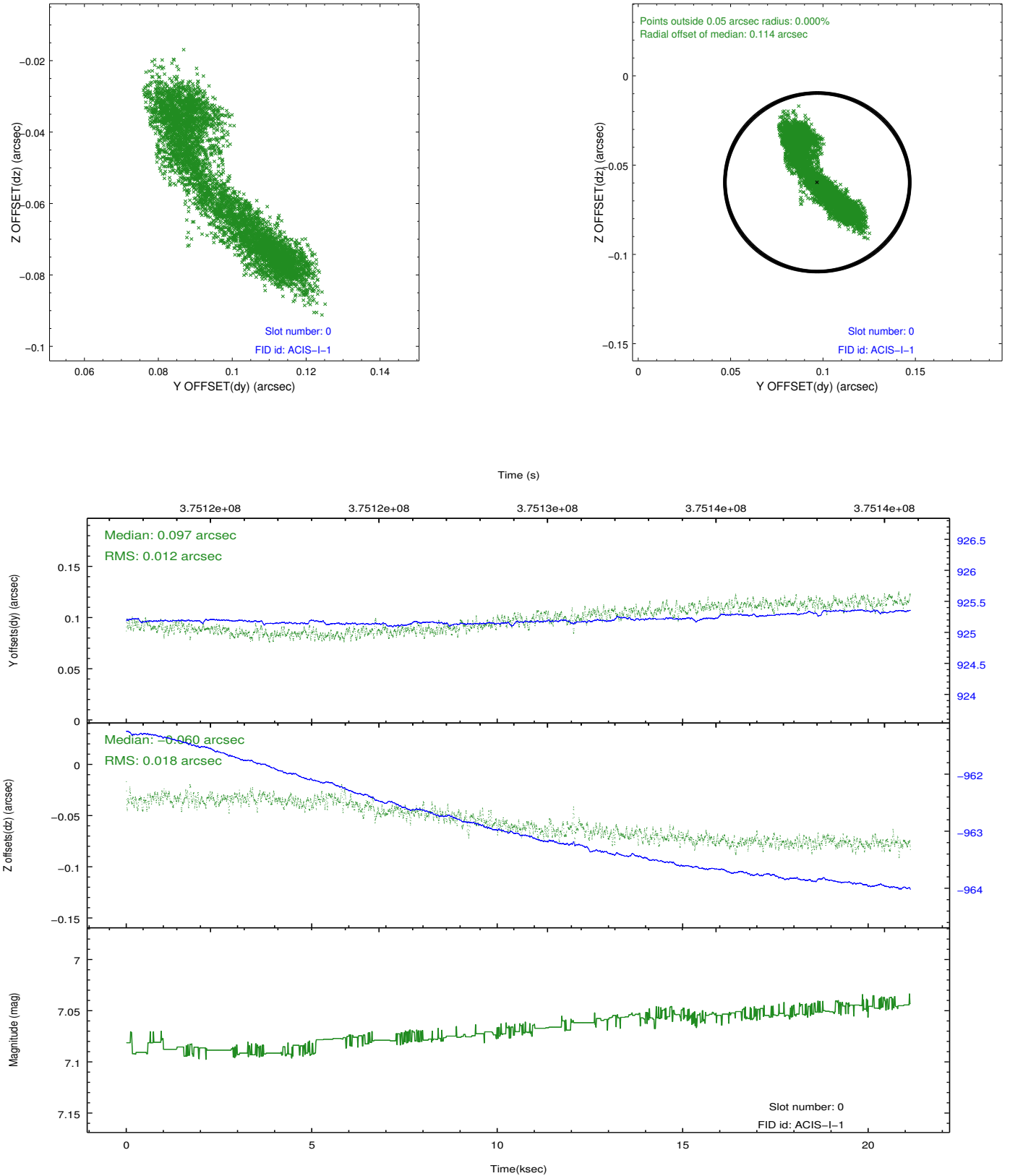


2.4.5 Slot 7

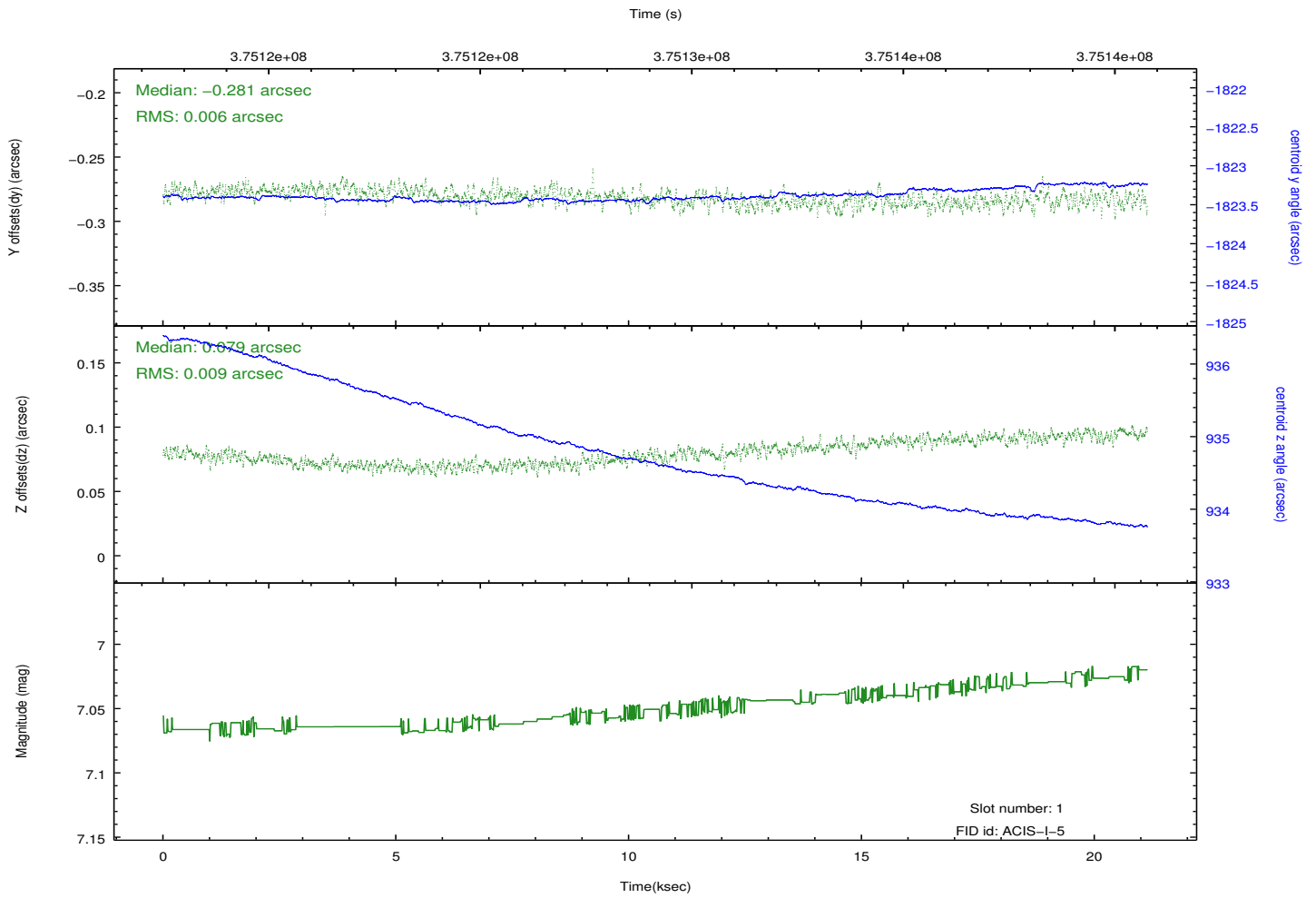
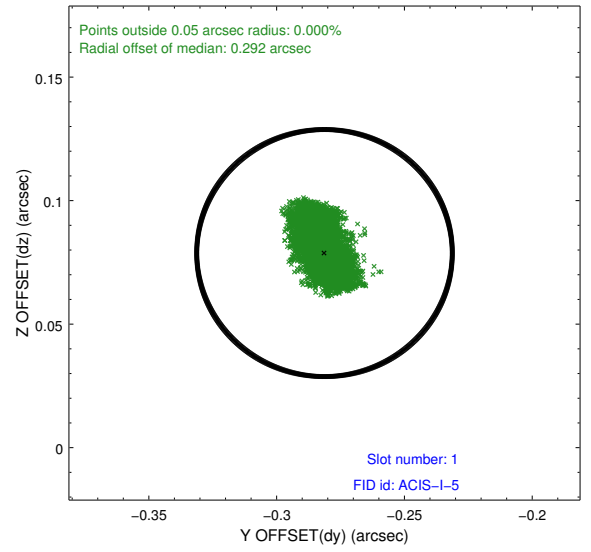
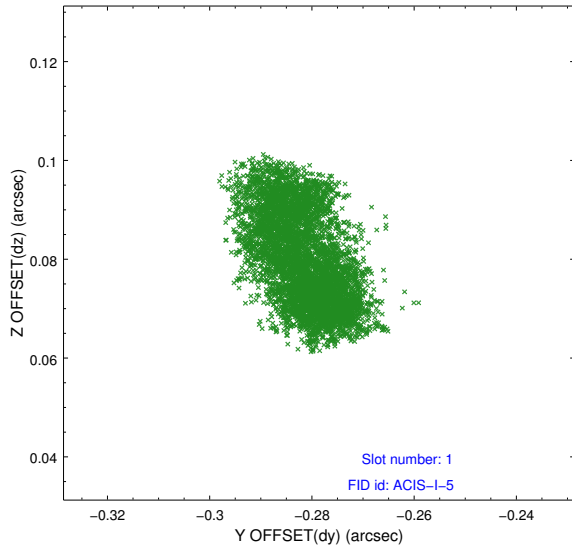


2.5 FID Slots

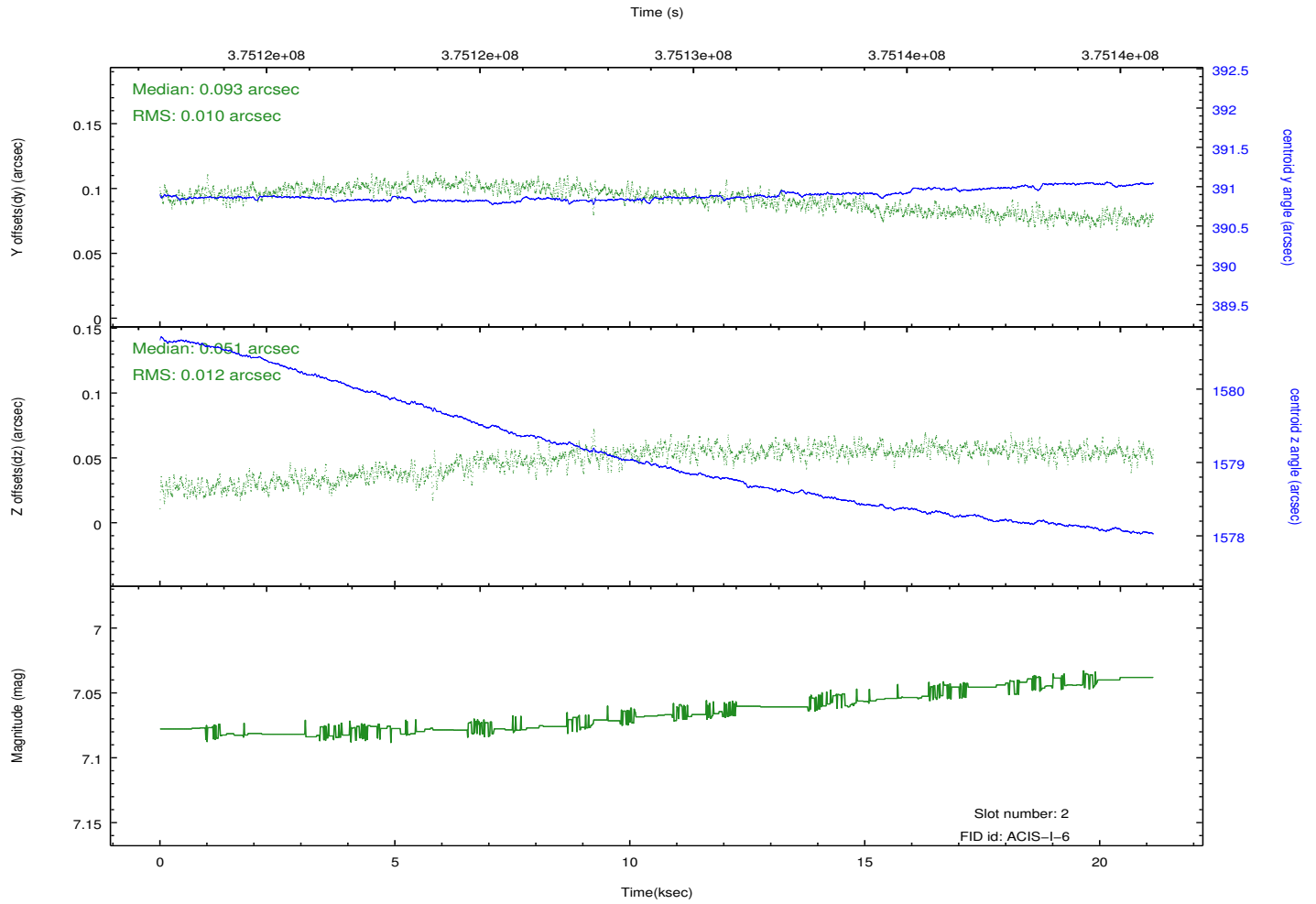
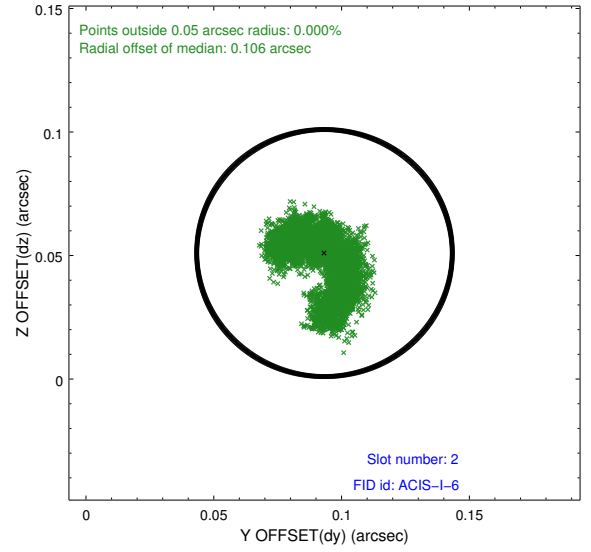
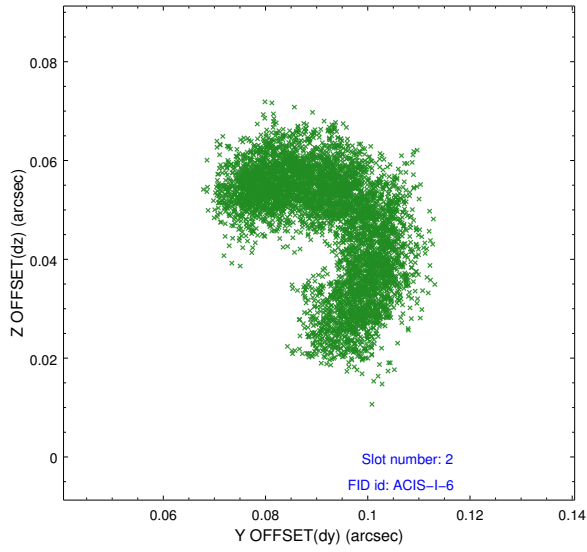
2.5.1 Slot 0



2.5.2 Slot 1



2.5.3 Slot 2



A Summary

A.1 Status

V&V Scientist	Jen Lauer
V&V Date (YYYY-MM-DD)	2012.06.20
V&V Edition	1
V&V Disposition and Status	OK
V&V Charge Time	21.126459162235

A.2 Comments