

# V&V Reference Report

## L2 ASCDS Version : 8.4.5

Observation 11787 - L2 Version 2  
Chandra X-Ray Center

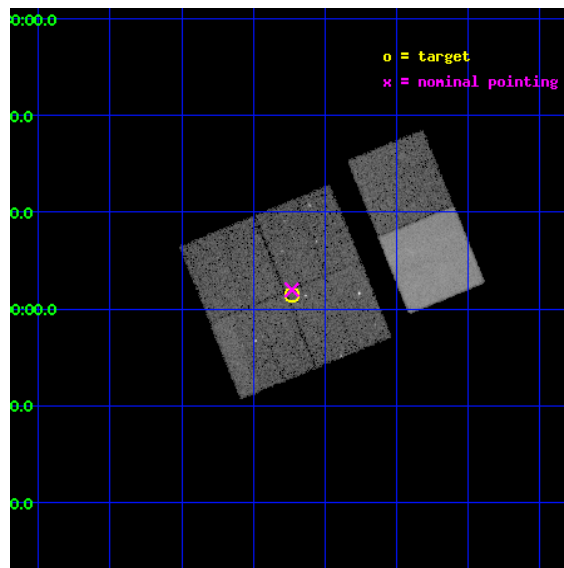
L2 Processing Date : Jun 20 2012

## Contents

<b>1</b>	<b>Front</b>	<b>2</b>
<b>2</b>	<b>OBI</b>	<b>3</b>
2.1	OBI . . . . .	3
2.1.1	Images . . . . .	3
2.1.2	Bias . . . . .	3
2.1.3	Parameters . . . . .	4
2.1.4	Events . . . . .	4
2.2	Compared Parameters . . . . .	5
2.3	Aspect . . . . .	6
2.4	Star Slots . . . . .	9
2.4.1	Slot 3 . . . . .	9
2.4.2	Slot 4 . . . . .	10
2.4.3	Slot 5 . . . . .	11
2.4.4	Slot 6 . . . . .	12
2.4.5	Slot 7 . . . . .	13
2.5	FID Slots . . . . .	14
2.5.1	Slot 0 . . . . .	14
2.5.2	Slot 1 . . . . .	15
2.5.3	Slot 2 . . . . .	16
<b>A</b>	<b>Summary</b>	<b>17</b>
A.1	Status . . . . .	17
A.2	Comments . . . . .	17

# 1 Front

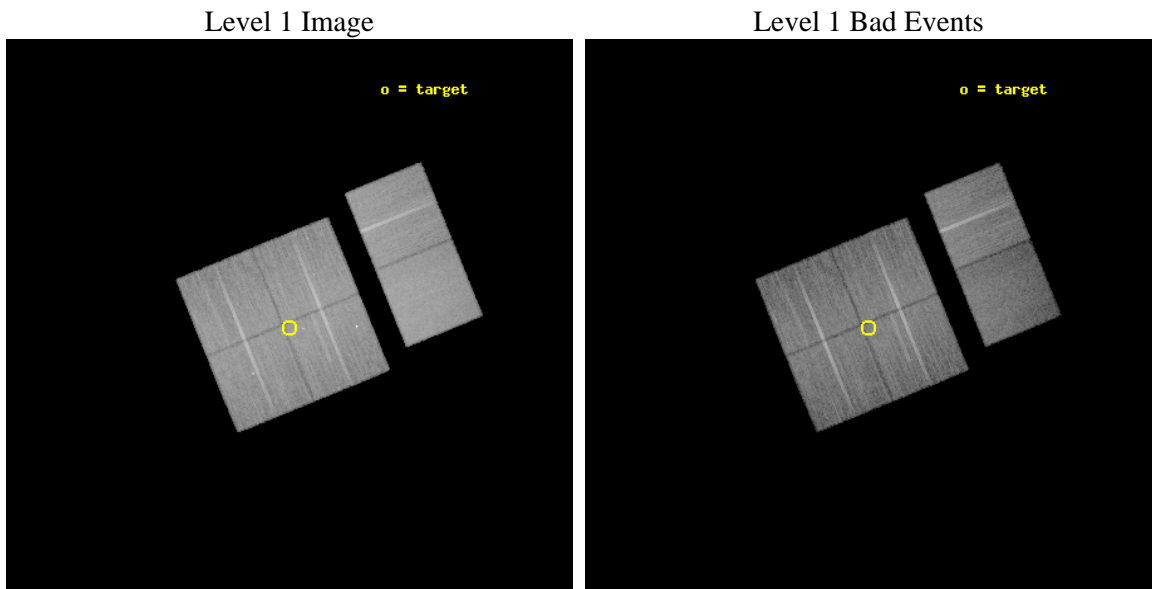
seq_num	900922	Sequence number
obs_id	11787	Observation id
title	Identifying Unidentified Fermi-LAT Objects (UFOs) at High-Latitude	&#160
observer	Dr. C.C. Teddy Cheung	Principal investigator
object	J1653.4-0200	Source name
dtcycle	0	&#160
cycle	P	events from which exps? Prim/Second/Both
ra_targ	253.432	Observer's specified target RA [deg]
dec_targ	-1.975	Observer's specified target Dec [deg]
ra_nom	253.43270101328	Nominal RA [deg]
dec_nom	-1.9669207451899	Nominal Dec [deg]
roll_nom	67.808036600292	Nominal Roll [deg]
revision	2	Processing version of data
ontime	21039.433809459	Sum of GTIs [s]
liveltime	20773.019830138	Livetime [s]
ontime0	21039.310689449	Sum of GTIs [s]
ontime1	21039.351729453	Sum of GTIs [s]
ontime2	21039.392769456	Sum of GTIs [s]
ontime3	21039.433809459	Sum of GTIs [s]
ontime6	21039.515889466	Sum of GTIs [s]
ontime7	21039.474849463	Sum of GTIs [s]
l2events	176749	Number of level 2 events



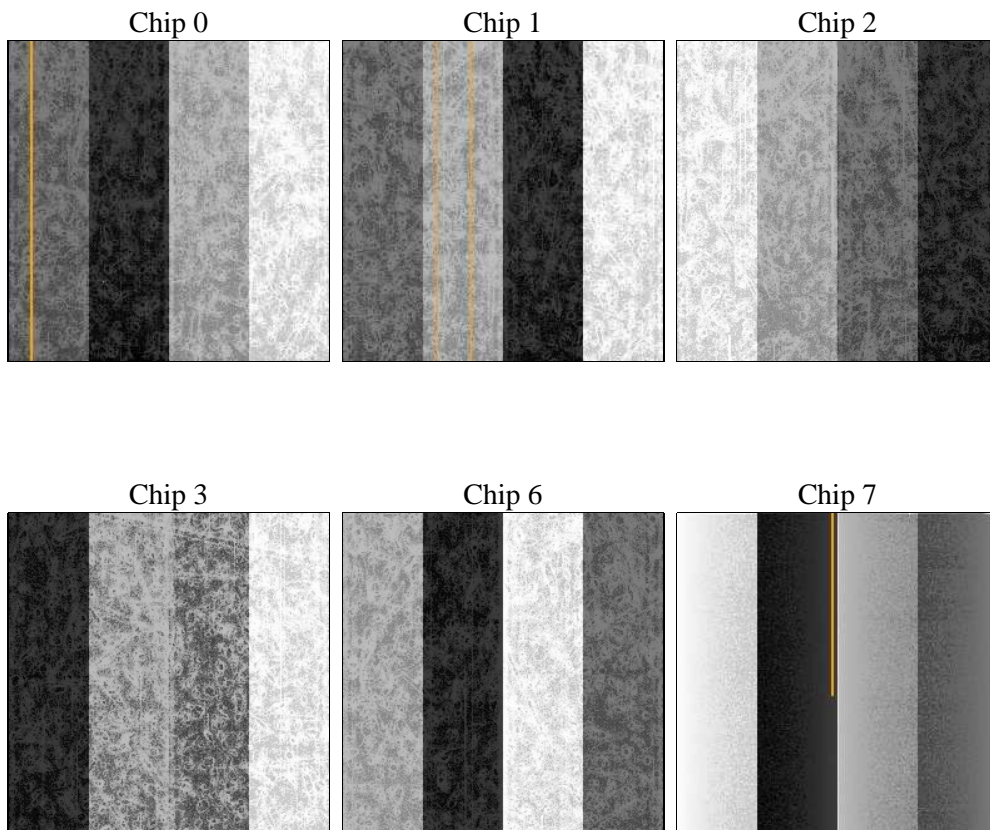
## 2 OBI

### 2.1 OBI

#### 2.1.1 Images



#### 2.1.2 Bias



### 2.1.3 Parameters

obi_num	1	Obi number	sched_exp_time	21000.000000	[s] Scheduled observation exposure time
ascdsver	8.4.5	Processing system revision	ontime	21039.433809459	Sum of GTIs [s]
caldbver	4.4.10	&#160	ontime0	21039.310689449	Sum of GTIs [s]
date	2012-06-20T12:12:17	Date and time of file creation	ontime1	21039.351729453	Sum of GTIs [s]
revision	2	Processing version of data	ontime2	21039.392769456	Sum of GTIs [s]
			ontime3	21039.433809459	Sum of GTIs [s]
			ontime6	21039.515889466	Sum of GTIs [s]
			ontime7	21039.474849463	Sum of GTIs [s]
			l1events	1080710	Number of level 1 events

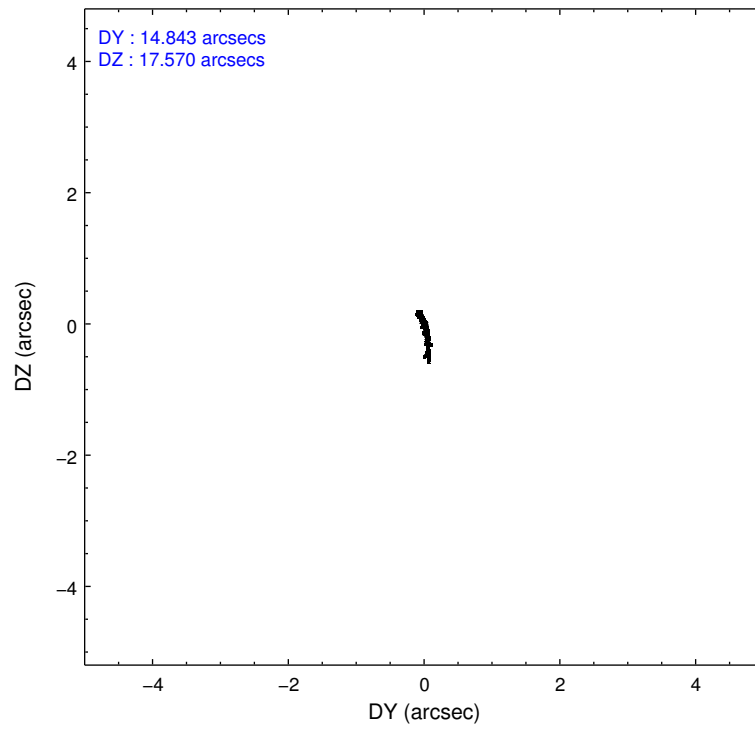
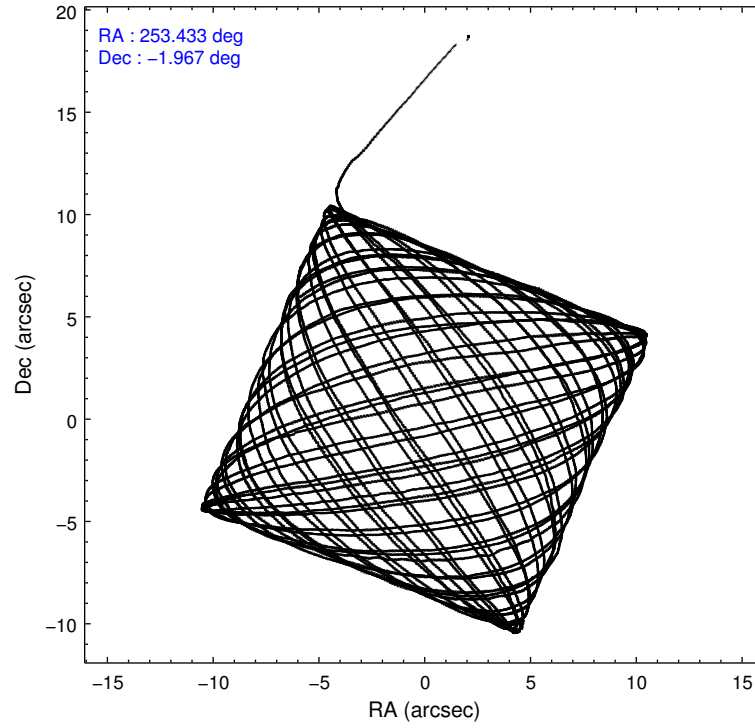
### 2.1.4 Events

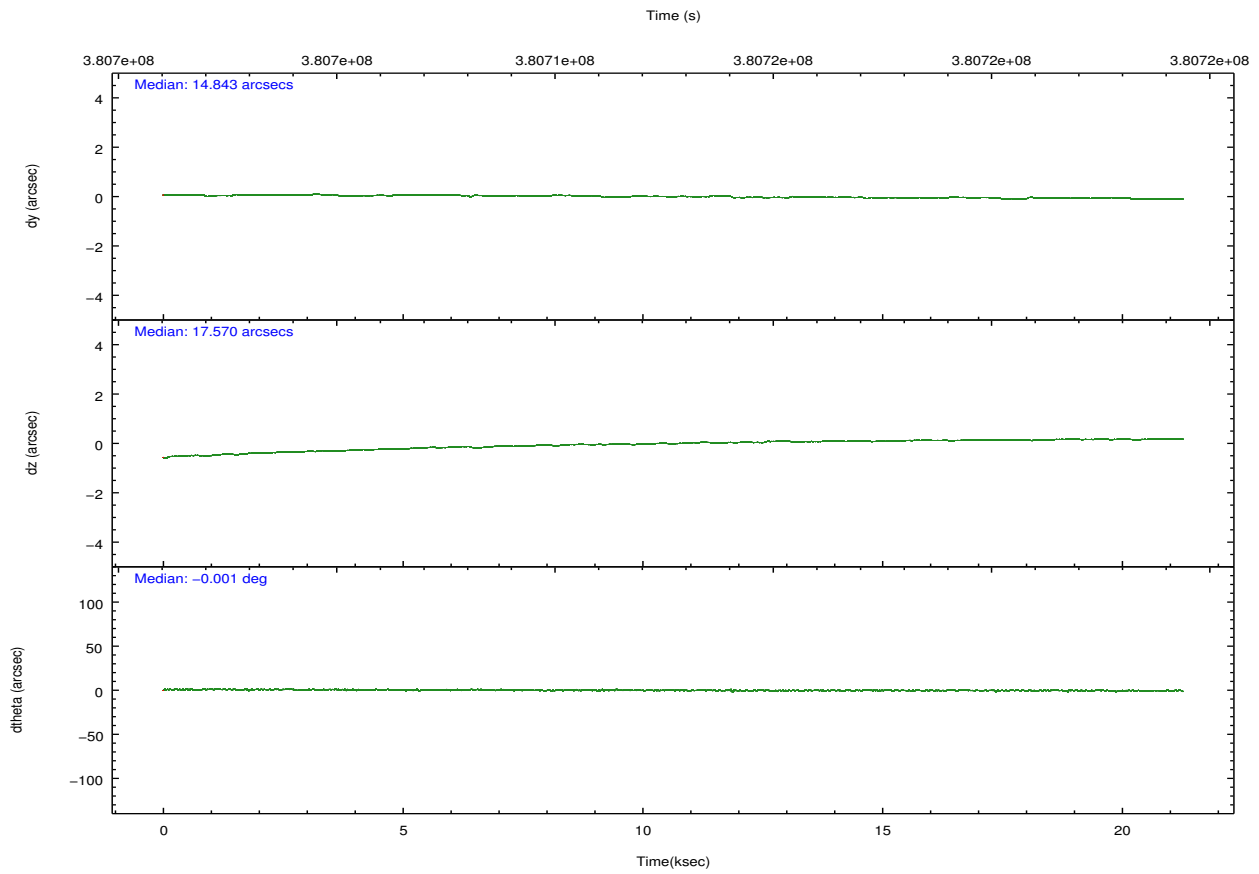
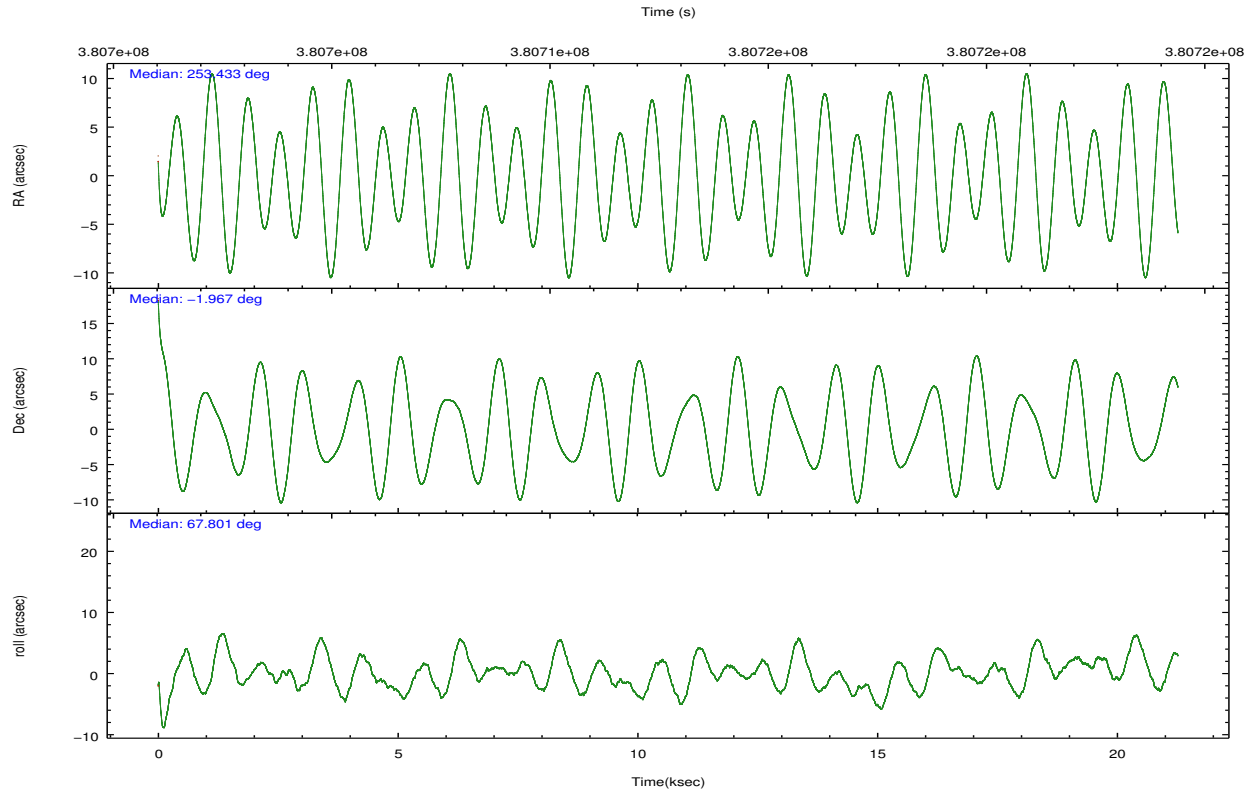
	ccd 0	ccd 1	ccd 2	ccd 3	ccd 6	ccd 7		ccd 0	ccd 1	ccd 2	ccd 3	ccd 6	ccd 7
level 1 events	166103	164005	179228	176109	187749	207516	grade 0 events	6952	8160	7422	8817	7039	9166
rejected events	146971	142227	160146	155507	167961	112418		4%	4%	4%	5%	3%	4%
rejected %	88%	86%	89%	88%	89%	54%	grade 1 events	102	97	95	133	102	254
								0%	0%	0%	0%	0%	0%
							grade 2 events	4767	5071	4384	4214	4427	19478
								2%	3%	2%	2%	2%	9%
							grade 3 events	1931	2145	1961	2097	1948	8568
								1%	1%	1%	1%	1%	4%
							grade 4 events	1901	2184	1958	1951	2078	8423
								1%	1%	1%	1%	1%	4%
							grade 5 events	6552	7096	6619	7686	7657	21889
								3%	4%	3%	4%	4%	10%
							grade 6 events	3585	4223	3361	3527	4299	49482
								2%	2%	1%	2%	2%	23%
							grade 7 events	140313	135029	153428	147684	160199	90256
								84%	82%	85%	83%	85%	43%

## 2.2 Compared Parameters

Parameter	Planned	Actual	Parameter	Planned	Actual
Instrument	ACIS	ACIS	Obspar format version number	7	7
Detector	ACIS-012367	ACIS-012367	Obspar file type	PREDICTED	ACTUAL
Grating	NONE	NONE	Obspar update status	NONE	UPDATED
Data mode	FAINT	FAINT	CCD I0 on	Y	Y
Observation mode	POINTING	POINTING	CCD I1 on	Y	Y
[deg] Pointing RA	253.436535	253.4327010132761	CCD I2 on	Y	Y
[deg] Pointing Dec	-1.994169	-1.966920745189906	CCD I3 on	Y	Y
[deg] Pointing Roll	67.599479	67.80803660029213	CCD S0 on	N	N
[mm] SIM focus pos	-0.782348	-0.7809083437167272	CCD S1 on	N	N
[mm] SIM defocus	0	0.001439871863259334	CCD S2 on	O2	Y
[mm] SIM translation stage pos	-233.592463	-233.5874344608287	CCD S3 on	O1	Y
[mm] SIM translation stage offset	0	-0.005018542100998502	CCD S4 on	N	N
[s] Observation start time (MET)	380702342.184000	380701289.38839	CCD S5 on	N	N
Observation start date	2010-01-24T06:37:56	2010-01-24T06:21:29	Number of optional ACIS chips dropped	0	0
[s] Observation end time (MET)	380723342.184000	380724346.25206	On-chip summing requested	N	N
Observation end date	2010-01-24T12:27:56	2010-01-24T12:45:46	Subarray requested	NONE	NONE
Read mode	TIMED	TIMED	Alternating exposures requested	N	N
			[s] Primary exposure time	0.000000	3.2

## 2.3 Aspect



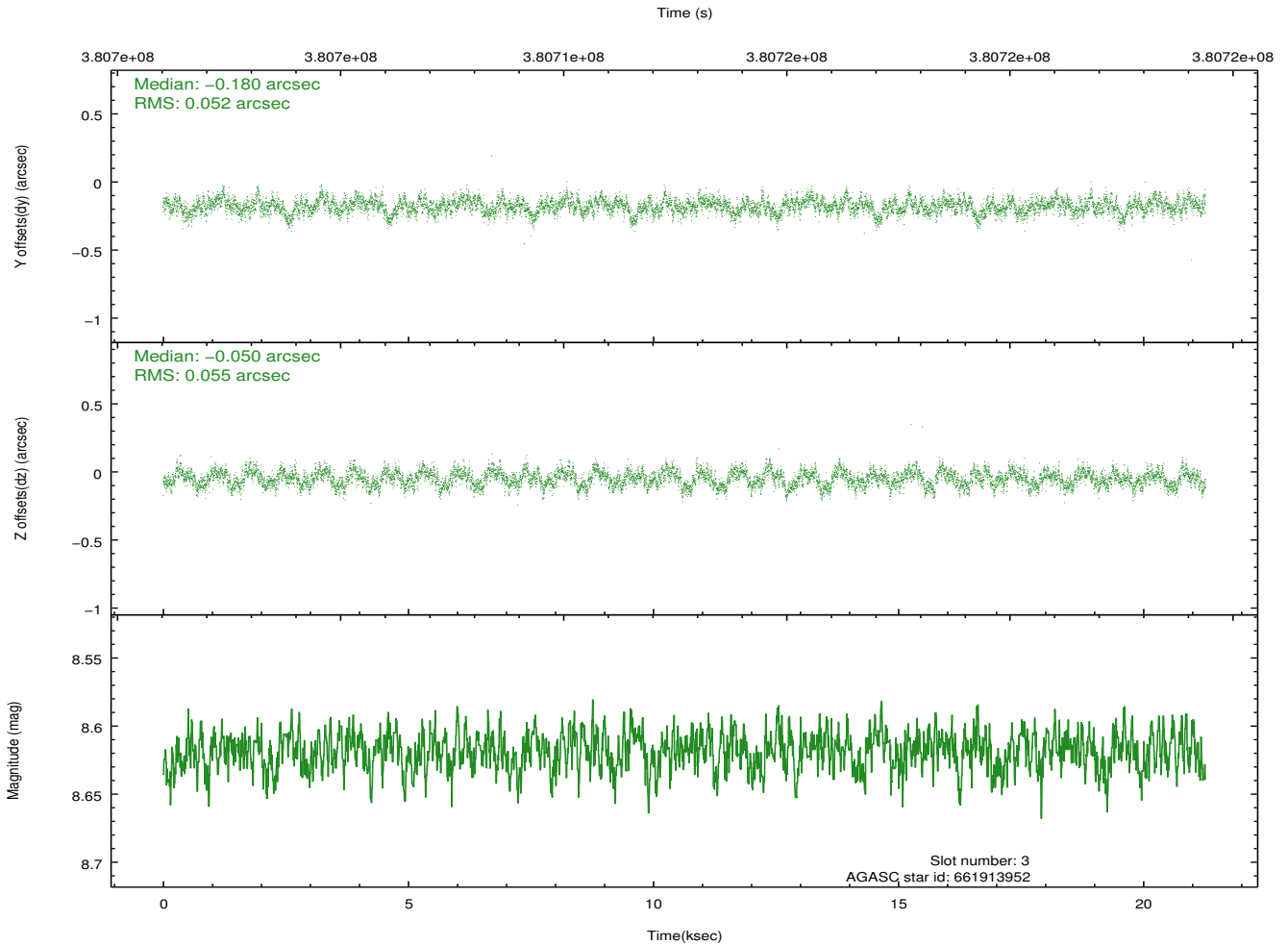
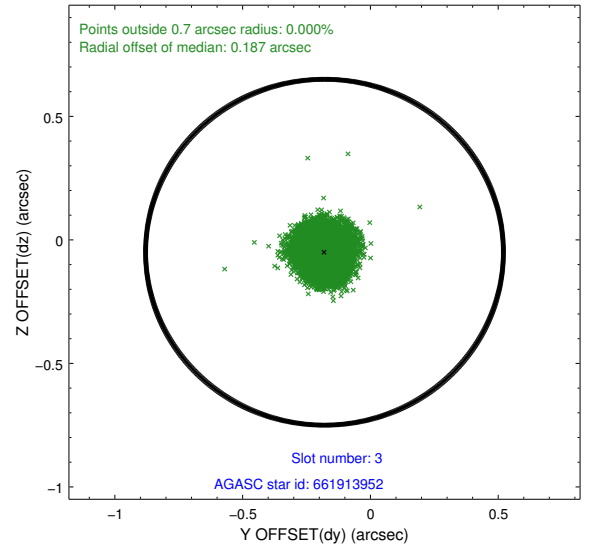
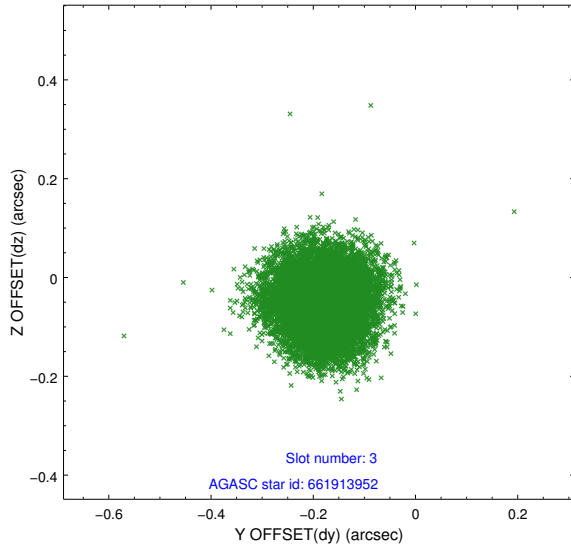


### Slot Statistics

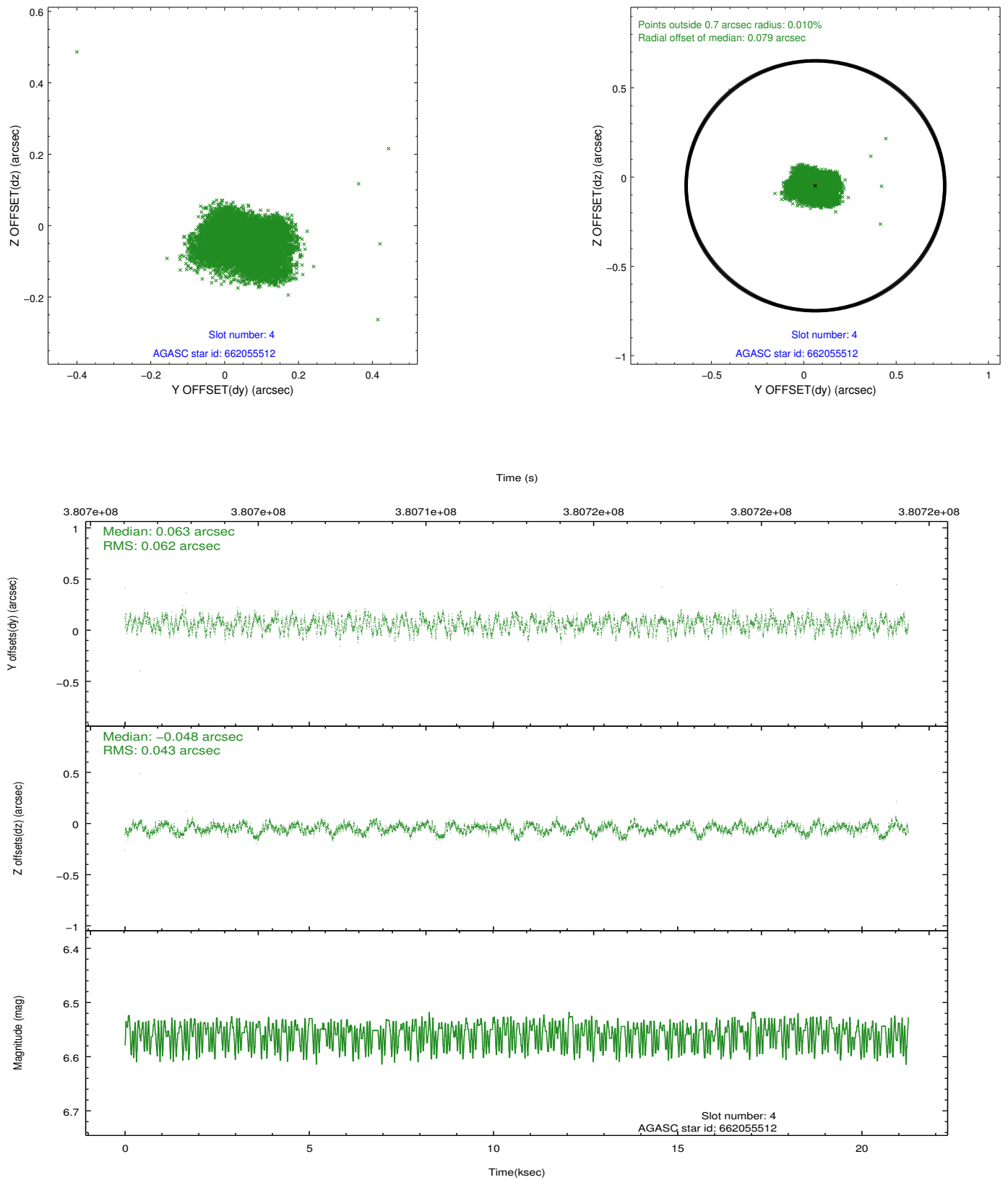
slot	status	id	mag	n_pts	med_dy	med_dz	dr1	dr2	ra	dec	mean_y	mean_z
0	FID	ACIS-I-1	7.00	5188	0.063	-0.008	0.009	0.016	0.000000	0.000000	924.67	-841.20
1	FID	ACIS-I-5	6.99	5188	-0.218	0.069	0.006	0.010	0.000000	0.000000	-1823.60	1056.32
2	FID	ACIS-I-6	7.00	5188	0.064	0.009	0.009	0.015	0.000000	0.000000	390.06	1700.92
3	GUIDE	661913952	8.62	10364	-0.180	-0.050	0.082	0.127	253.032008	-1.369657	1523.55	2203.10
4	GUIDE	662055512	6.56	10375	0.063	-0.048	0.082	0.126	253.544192	-1.612306	1418.29	165.69
5	GUIDE	662438264	8.56	10369	0.085	-0.144	0.070	0.114	252.881677	-1.945963	-600.49	1911.31
6	GUIDE	662438856	10.30	10347	0.211	-0.182	0.143	0.231	252.828867	-1.976983	-776.23	2044.73
7	GUIDE	662582256	9.67	10365	-0.171	0.428	0.120	0.194	254.035357	-1.919846	1068.32	-1889.35

## 2.4 Star Slots

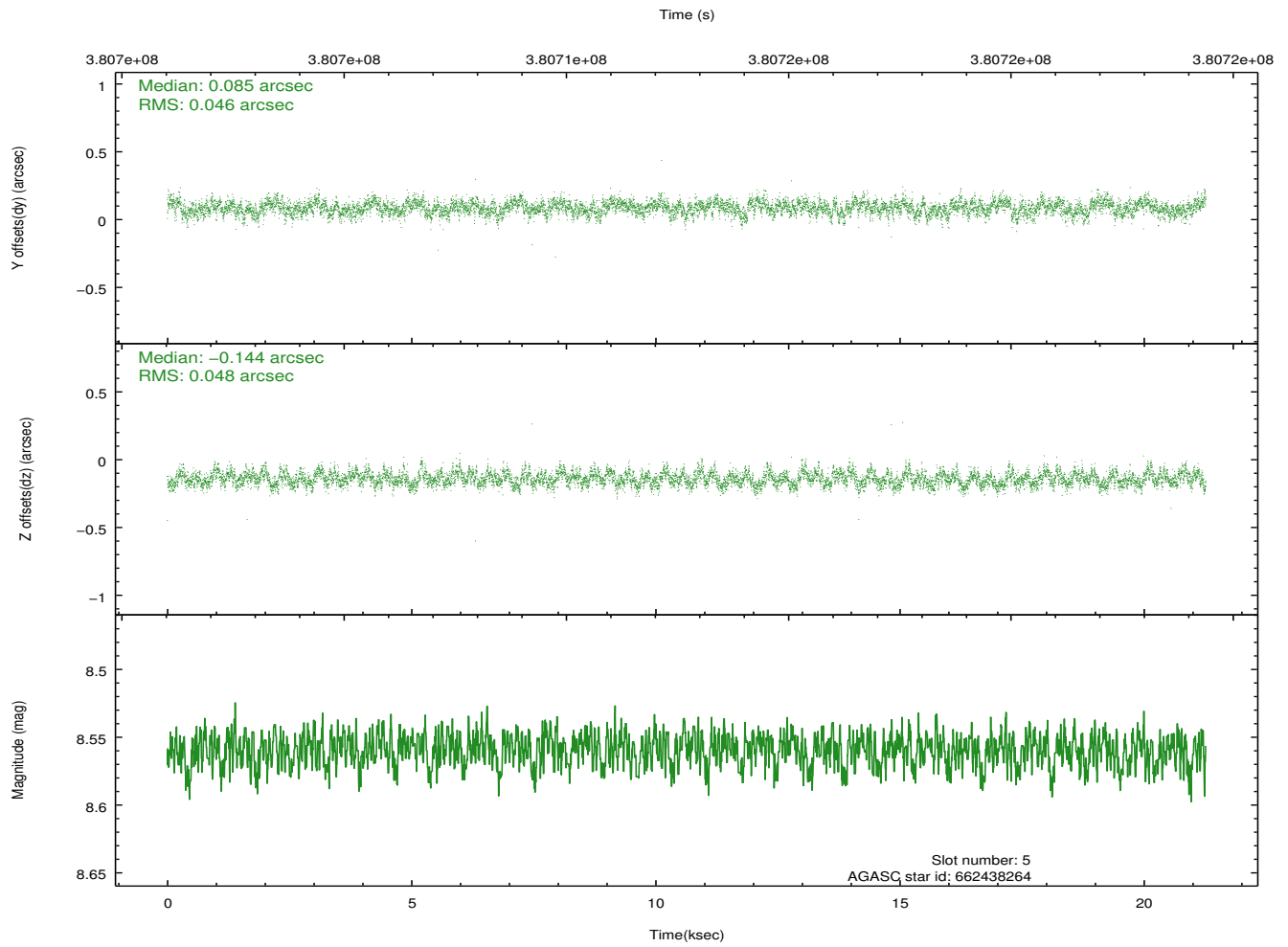
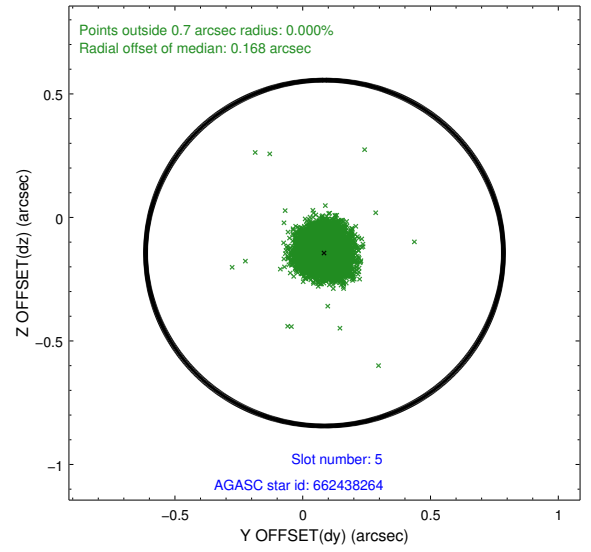
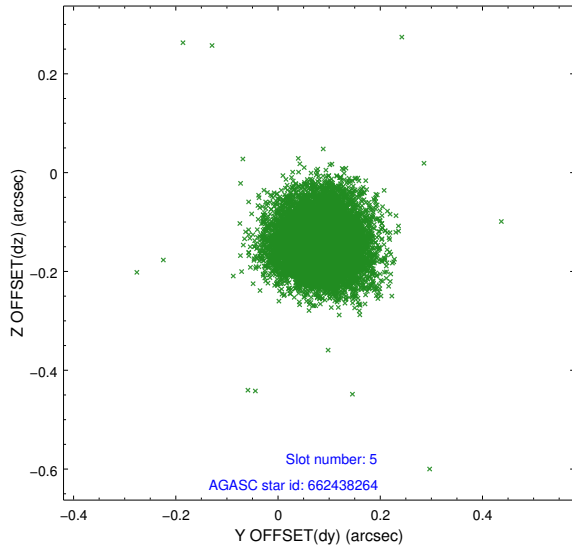
### 2.4.1 Slot 3



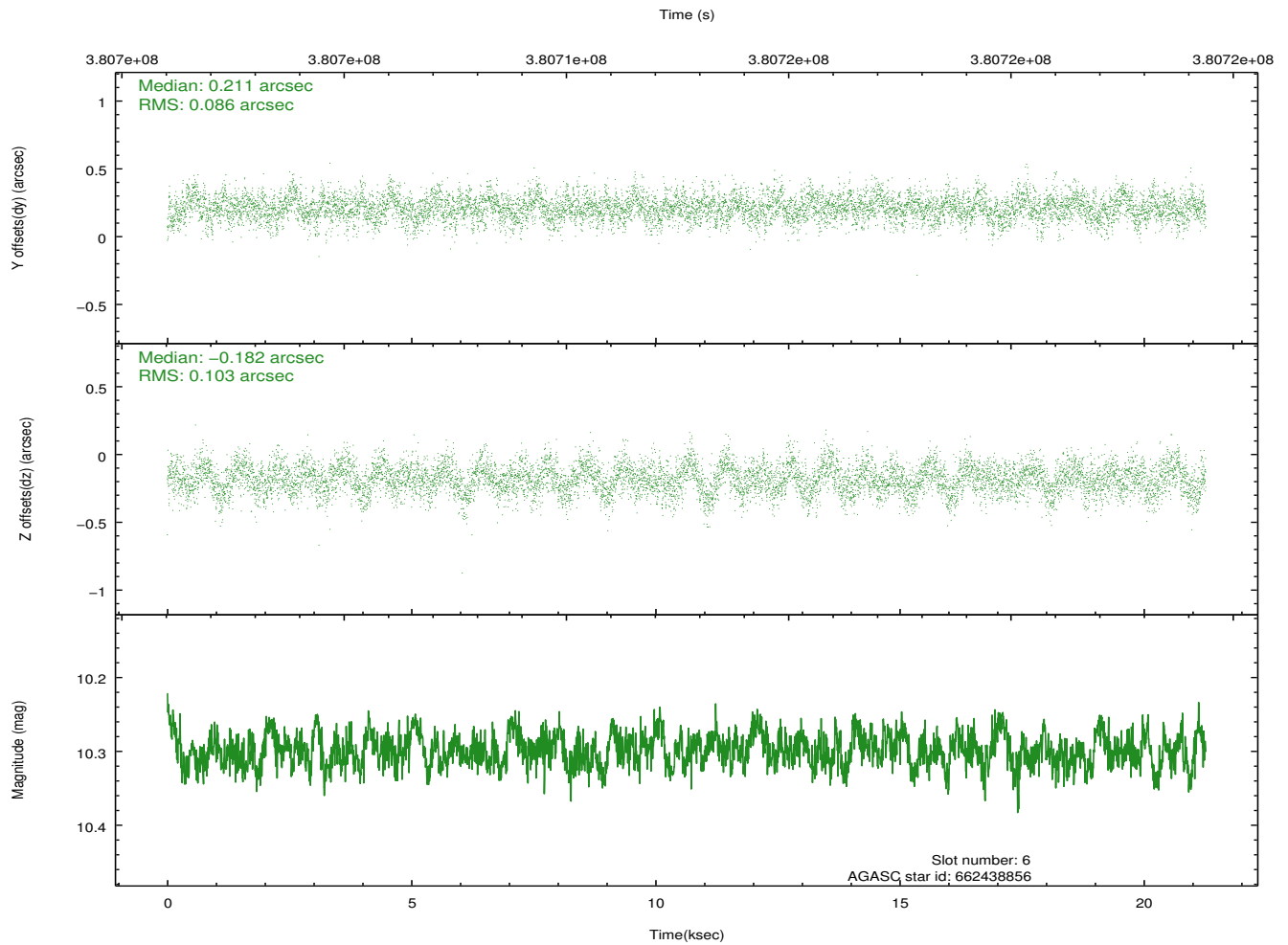
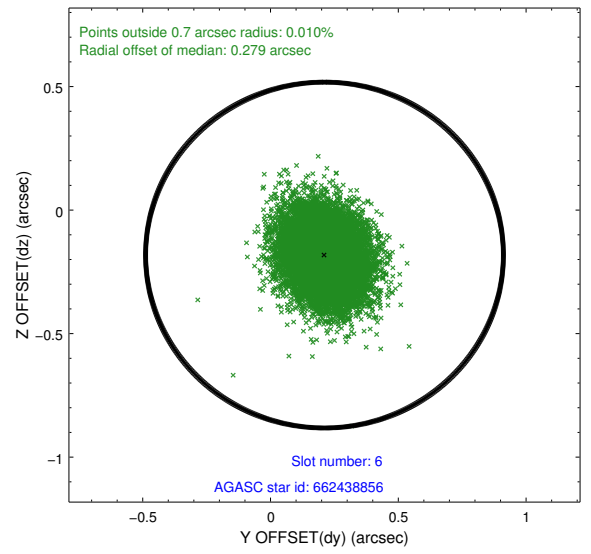
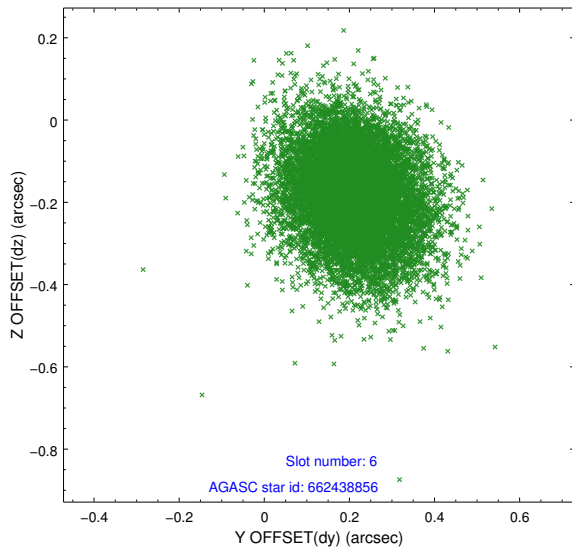
## 2.4.2 Slot 4



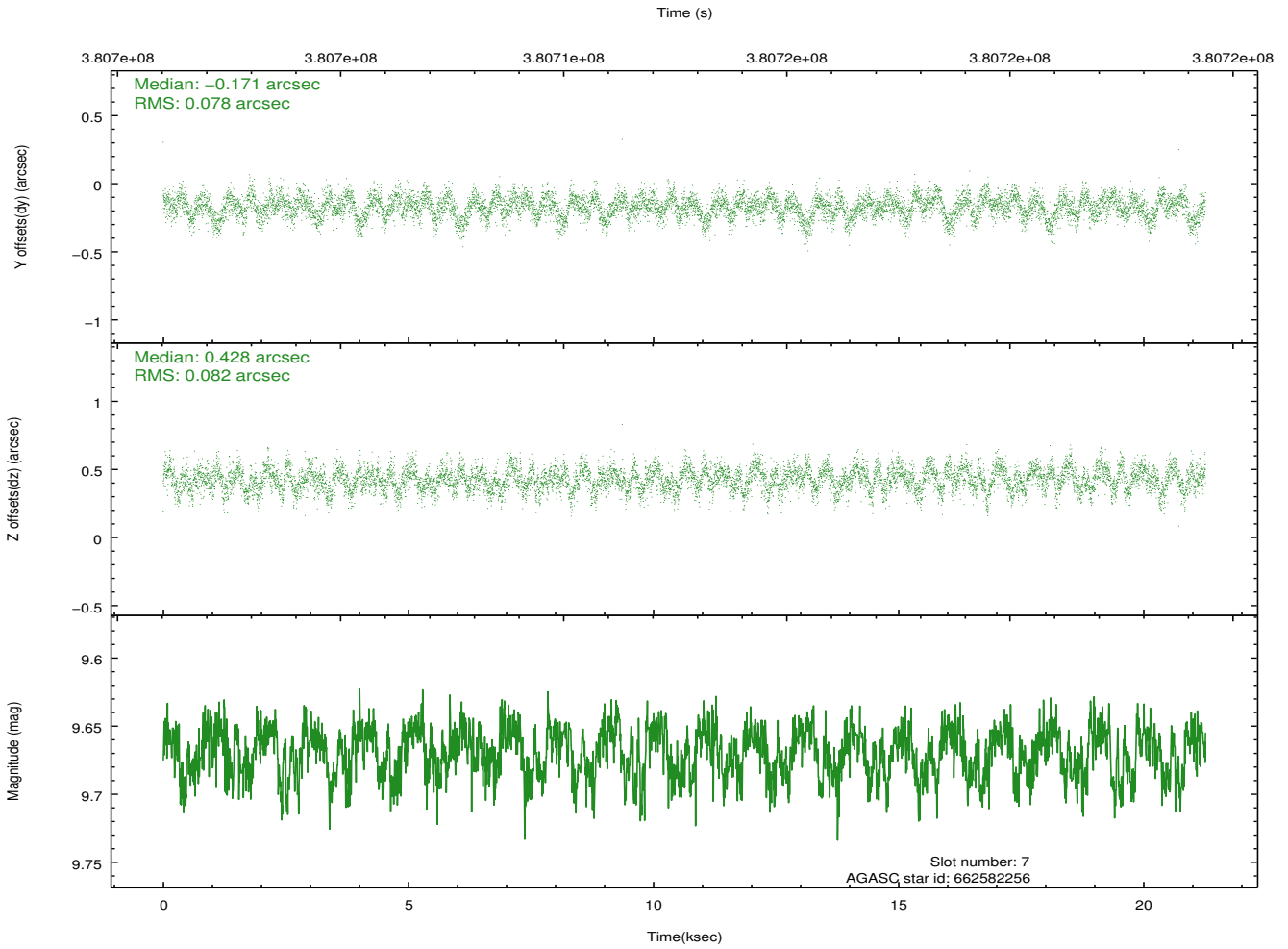
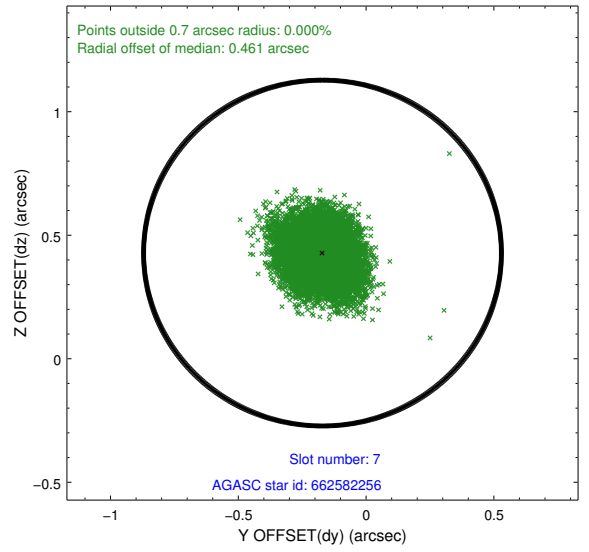
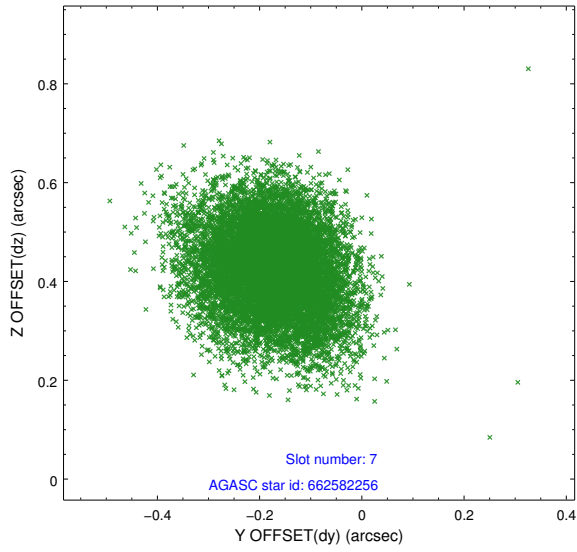
### 2.4.3 Slot 5



### 2.4.4 Slot 6

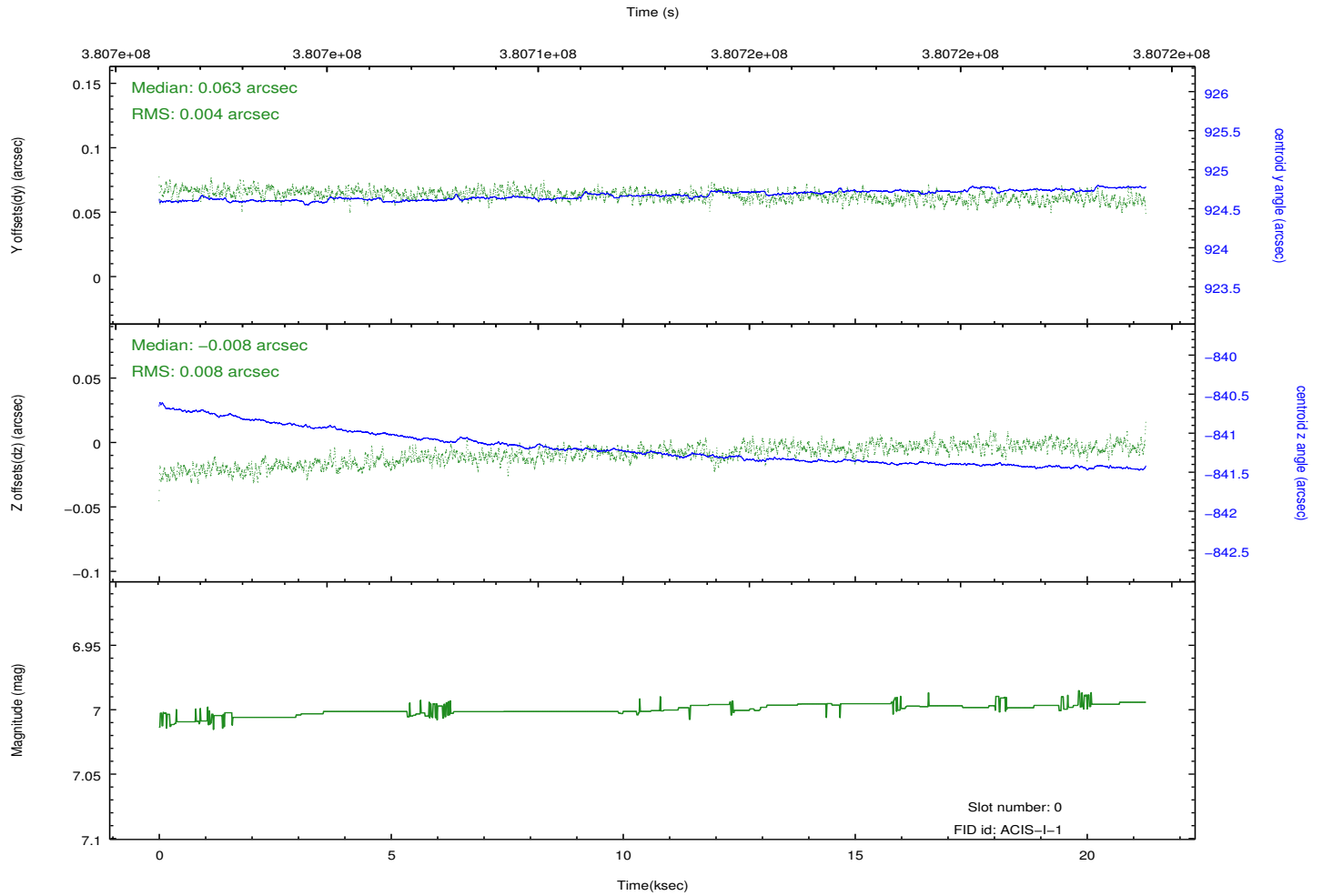
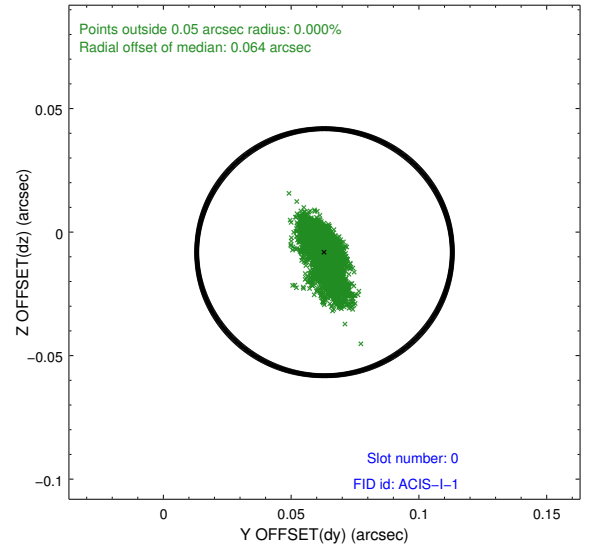
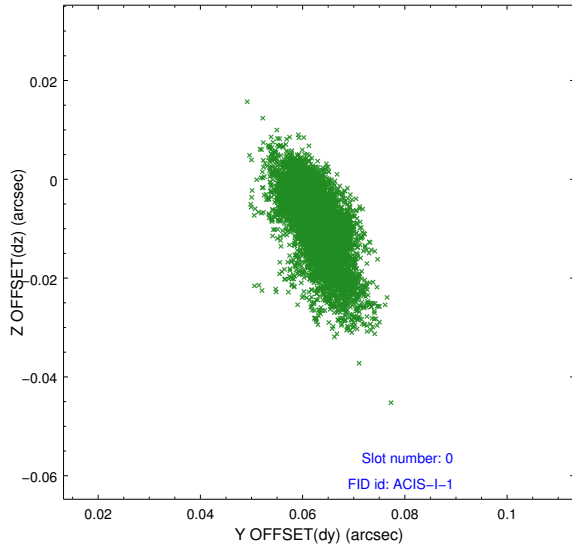


### 2.4.5 Slot 7

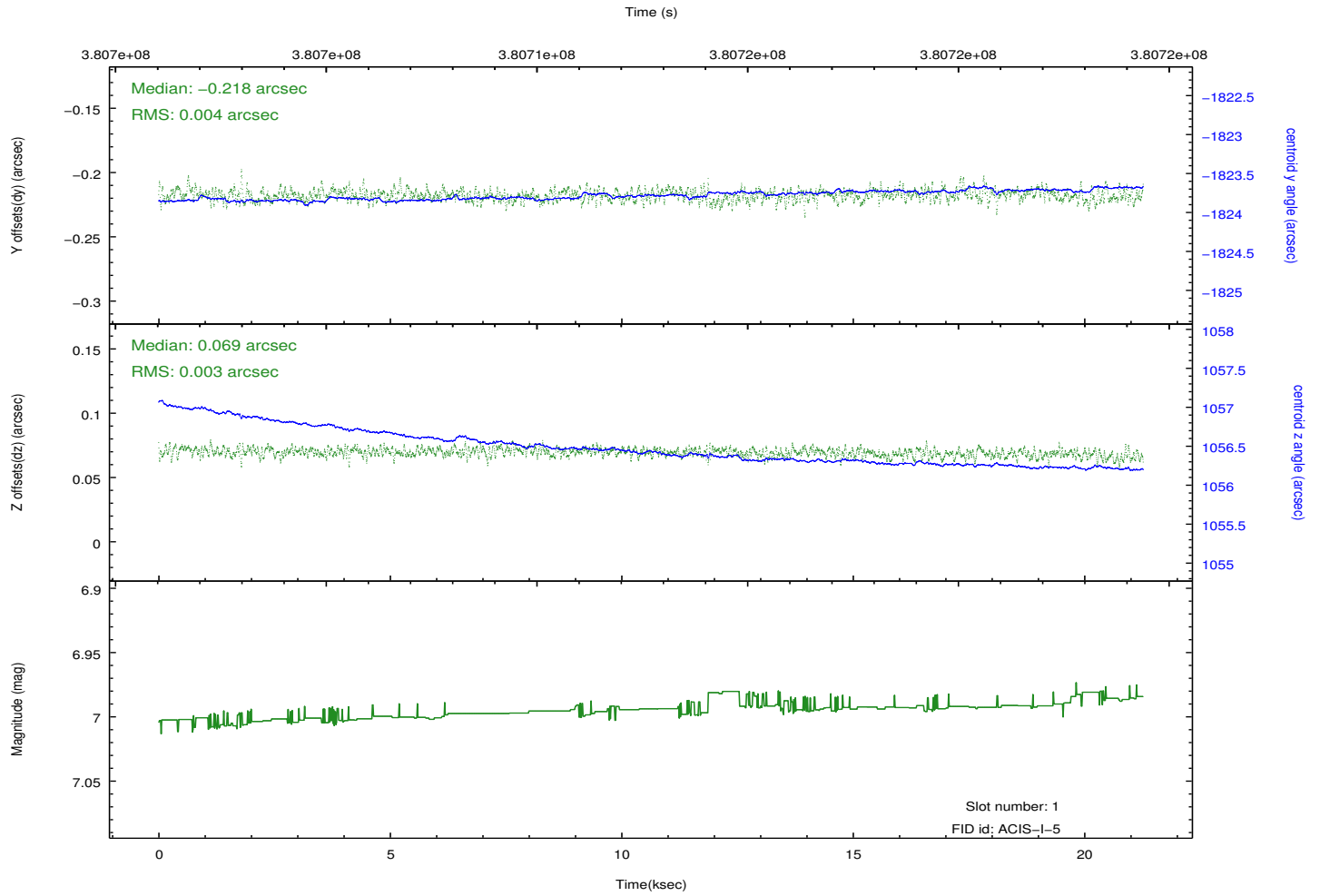
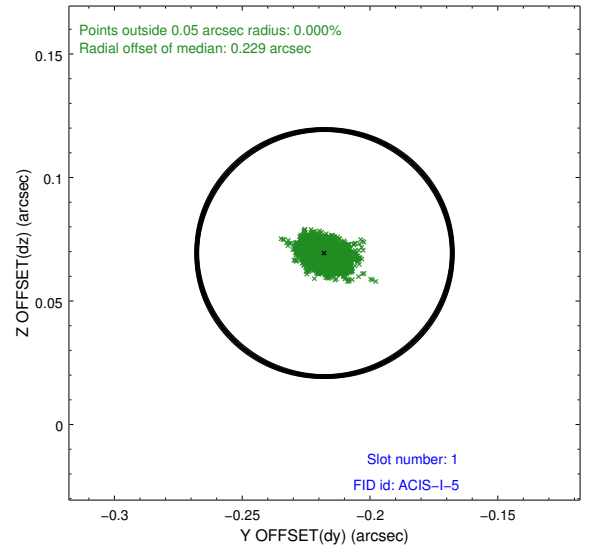
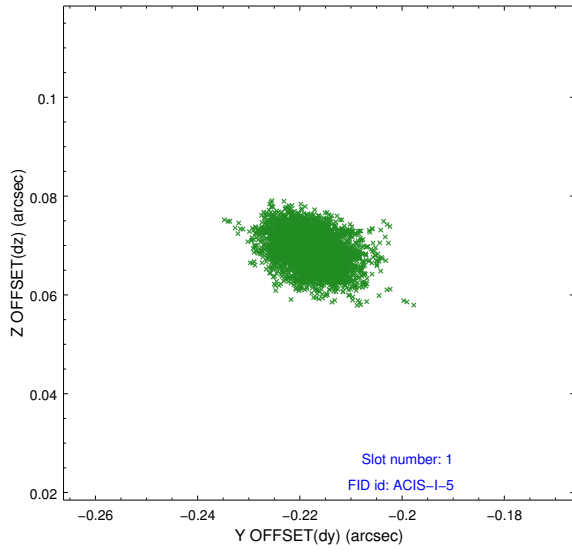


## 2.5 FID Slots

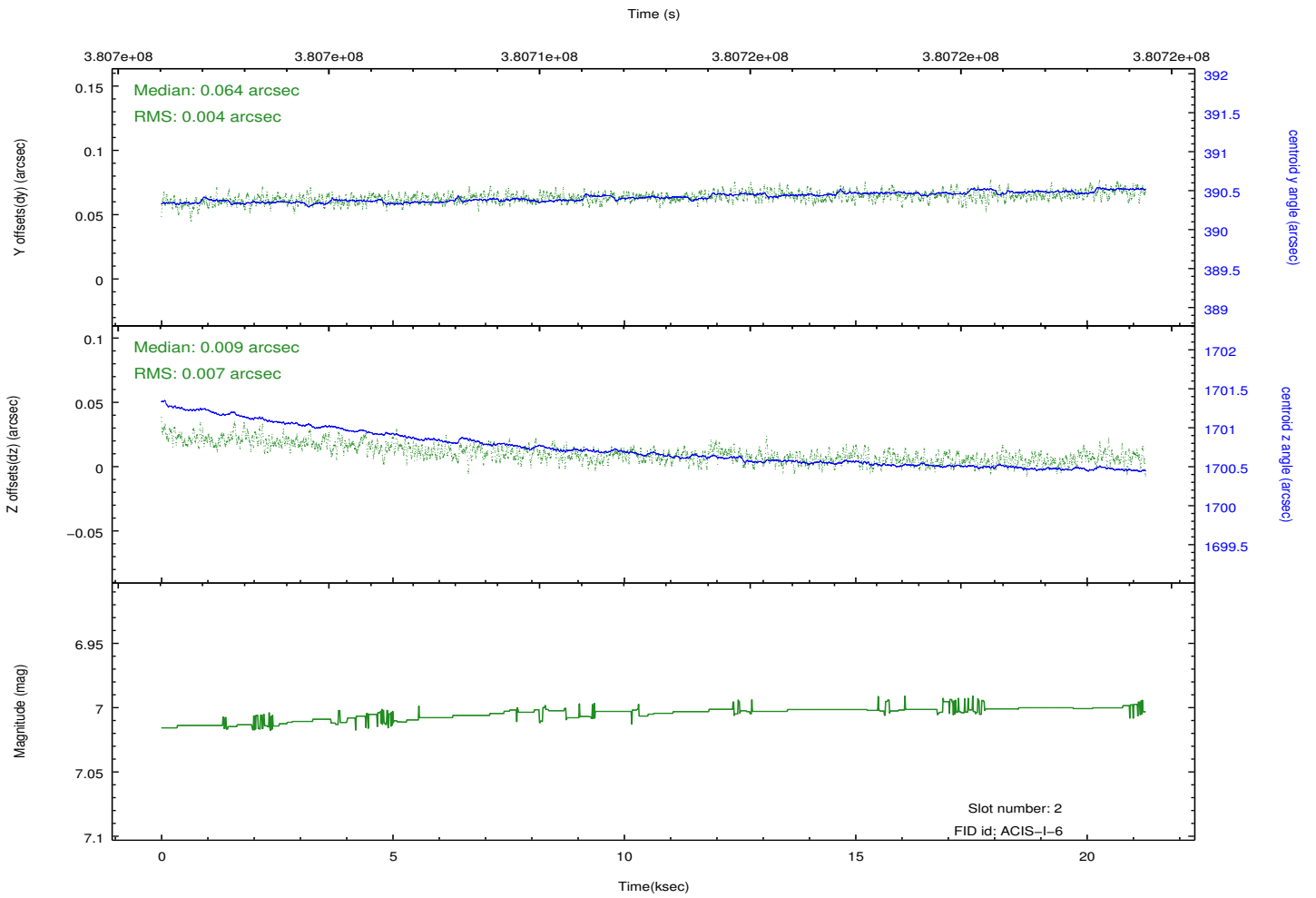
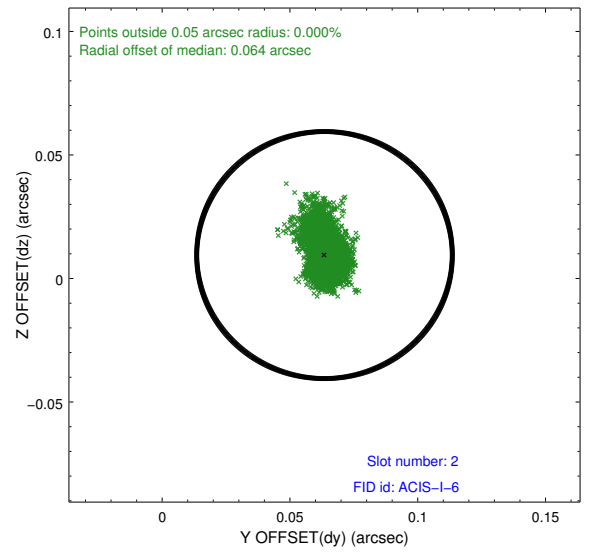
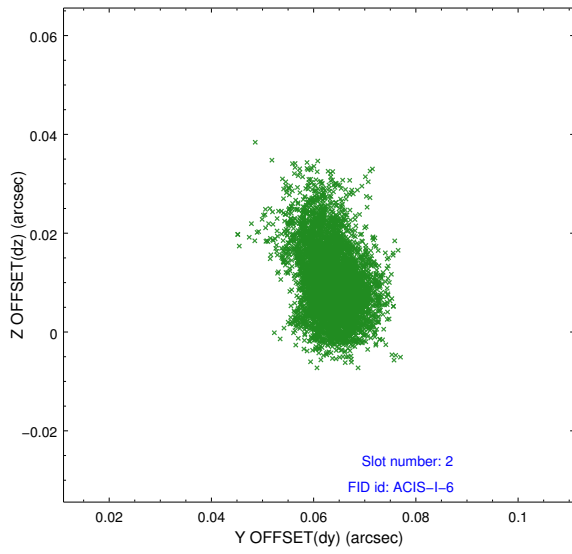
### 2.5.1 Slot 0



## 2.5.2 Slot 1



### 2.5.3 Slot 2



# A Summary

## A.1 Status

V&V Scientist	Jen Lauer
V&V Date (YYYY-MM-DD)	2012.06.26
V&V Edition	1
V&V Disposition and Status	OK
V&V Charge Time	21.039433806896

## A.2 Comments