

V&V Reference Report

L2 ASCDS Version : 8.4.5

Observation 11827 - L2 Version 2
Chandra X-Ray Center

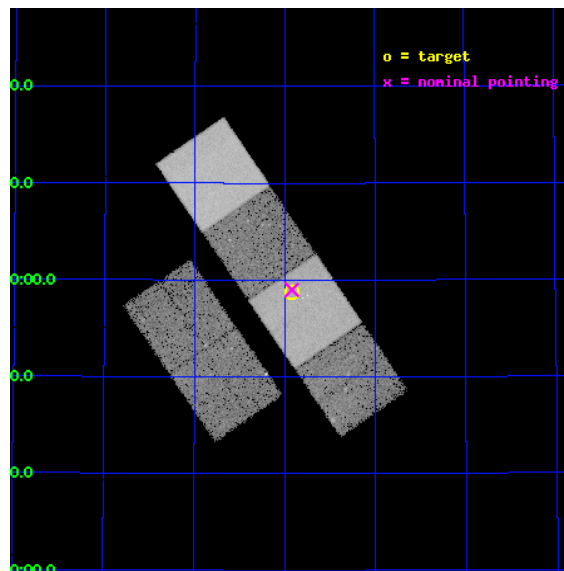
L2 Processing Date : Jun 17 2012

Contents

1	Front	2
2	OBI	3
2.1	OBI	3
2.1.1	Images	3
2.1.2	Bias	3
2.1.3	Parameters	4
2.1.4	Events	4
2.2	Compared Parameters	5
2.3	Aspect	6
2.4	Star Slots	9
2.4.1	Slot 3	9
2.4.2	Slot 4	10
2.4.3	Slot 5	11
2.4.4	Slot 6	12
2.4.5	Slot 7	13
2.5	FID Slots	14
2.5.1	Slot 0	14
2.5.2	Slot 1	15
2.5.3	Slot 2	16
A	Summary	17
A.1	Status	17
A.2	Comments	17

1 Front

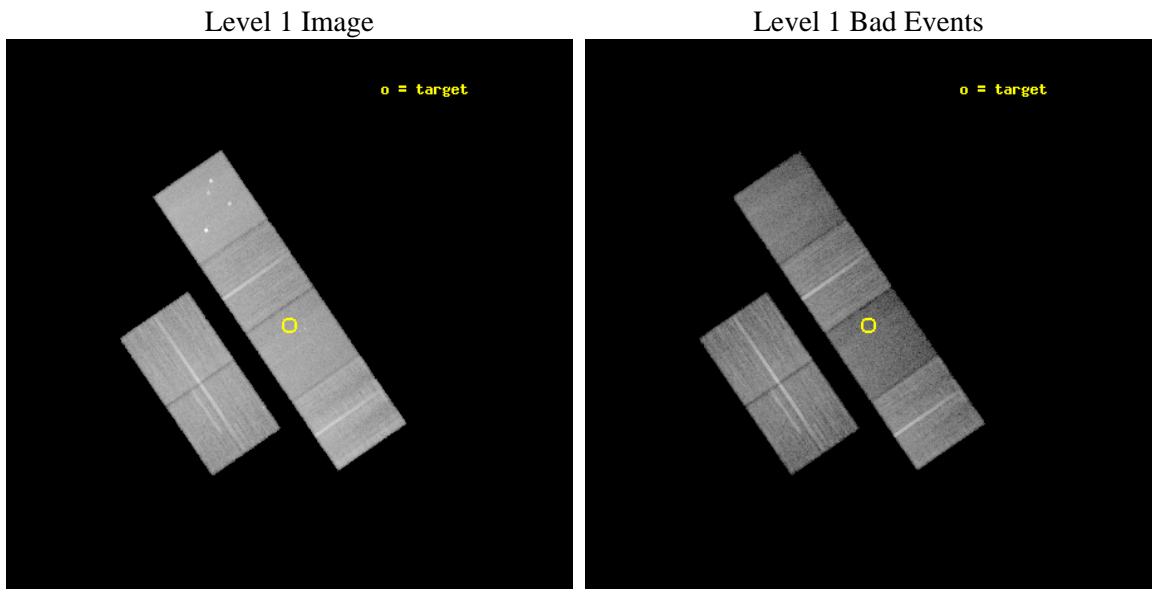
seq_num	501344	Sequence number
obs_id	11827	Observation id
title	Search for Long GRB Jet Breaks	Proposal title
observer	Professor Gordon Garmire	Principal investigator
object	GRB 091020	Source name
dtcycle	0	
cycle	P	events from which exps? Prim/Second/Both
ra_targ	175.73005	Observer's specified target RA [deg]
dec_targ	50.97839	Observer's specified target Dec [deg]
ra_nom	175.73044288631	Nominal RA [deg]
dec_nom	50.983224158684	Nominal Dec [deg]
roll_nom	55.601681206338	Nominal Roll [deg]
revision	2	Processing version of data
ontime	20217.599924743	Sum of GTIs [s]
livetime	19961.592500919	Livetime [s]
ontime2	20217.599924743	Sum of GTIs [s]
ontime3	20217.599924743	Sum of GTIs [s]
ontime5	20217.599924743	Sum of GTIs [s]
ontime6	20217.599924743	Sum of GTIs [s]
ontime7	20217.599924743	Sum of GTIs [s]
ontime8	20211.117954195	Sum of GTIs [s]
l2events	237627	Number of level 2 events



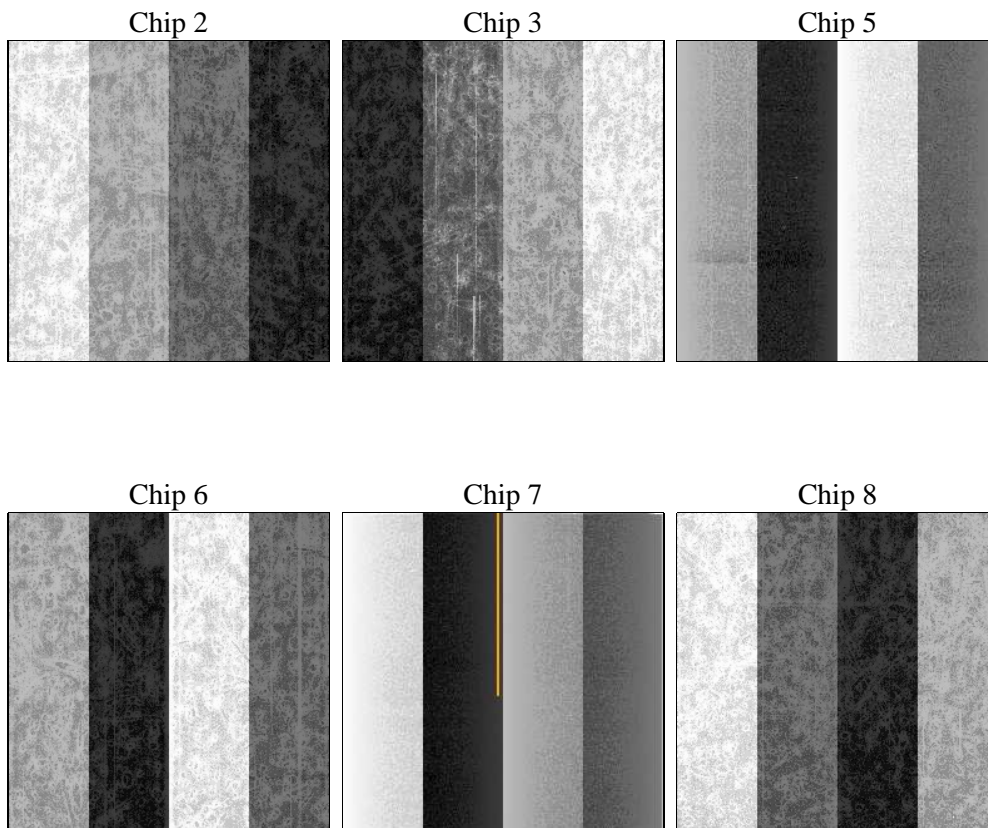
2 OBI

2.1 OBI

2.1.1 Images



2.1.2 Bias



2.1.3 Parameters

obi_num	2	Obi number	sched_exp_time	20000.000000	[s] Scheduled observation exposure time
ascdsver	8.4.5	Processing system revision	ontime	20217.599924743	Sum of GTIs [s]
caldbver	4.4.10	 	ontime2	20217.599924743	Sum of GTIs [s]
date	2012-06-17T05:21:09	Date and time of file creation	ontime3	20217.599924743	Sum of GTIs [s]
revision	2	Processing version of data	ontime5	20217.599924743	Sum of GTIs [s]
			ontime6	20217.599924743	Sum of GTIs [s]
			ontime7	20217.599924743	Sum of GTIs [s]
			ontime8	20211.117954195	Sum of GTIs [s]
			l1events	1069273	Number of level 1 events

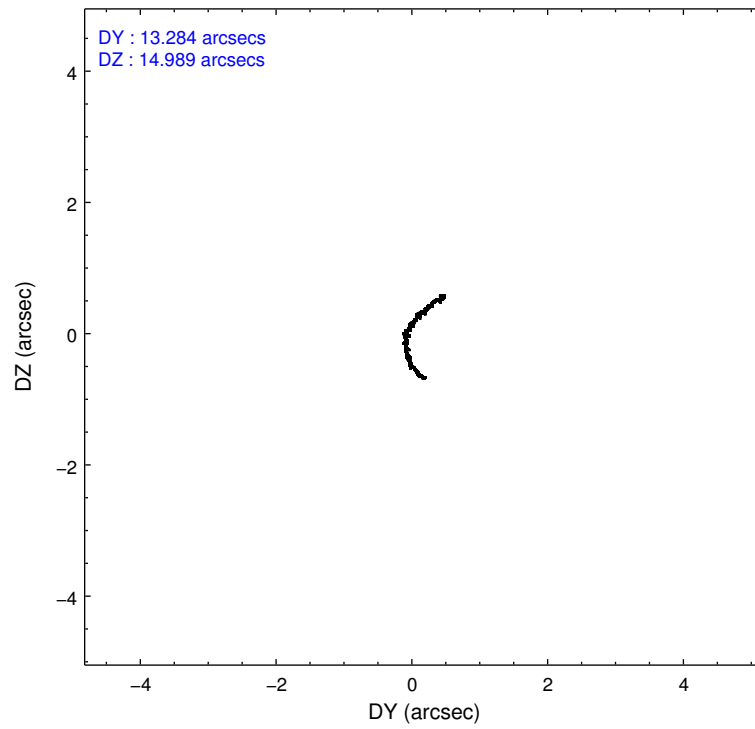
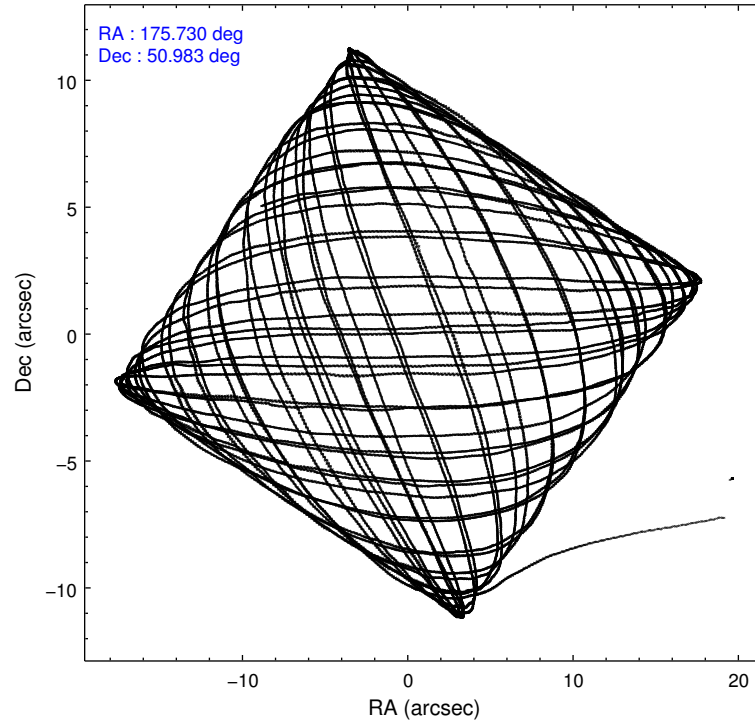
2.1.4 Events

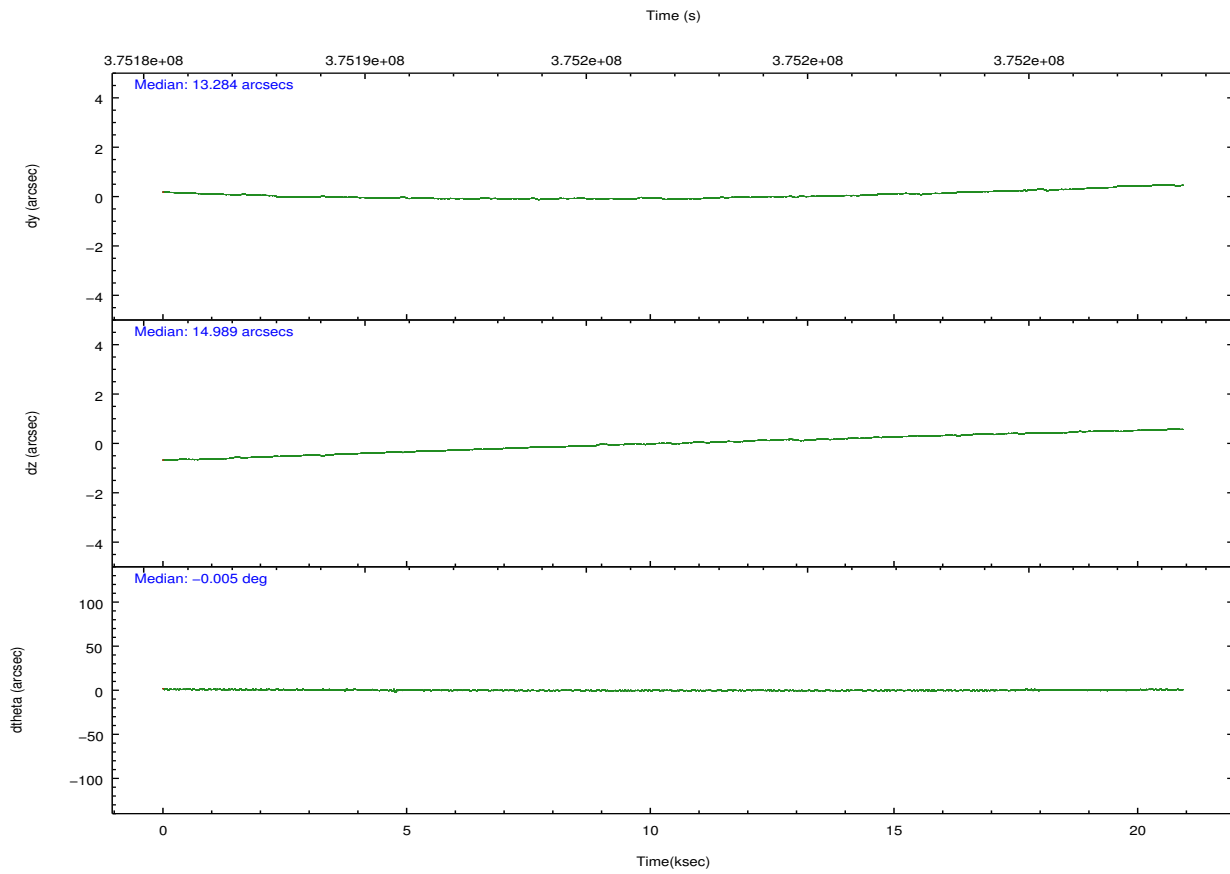
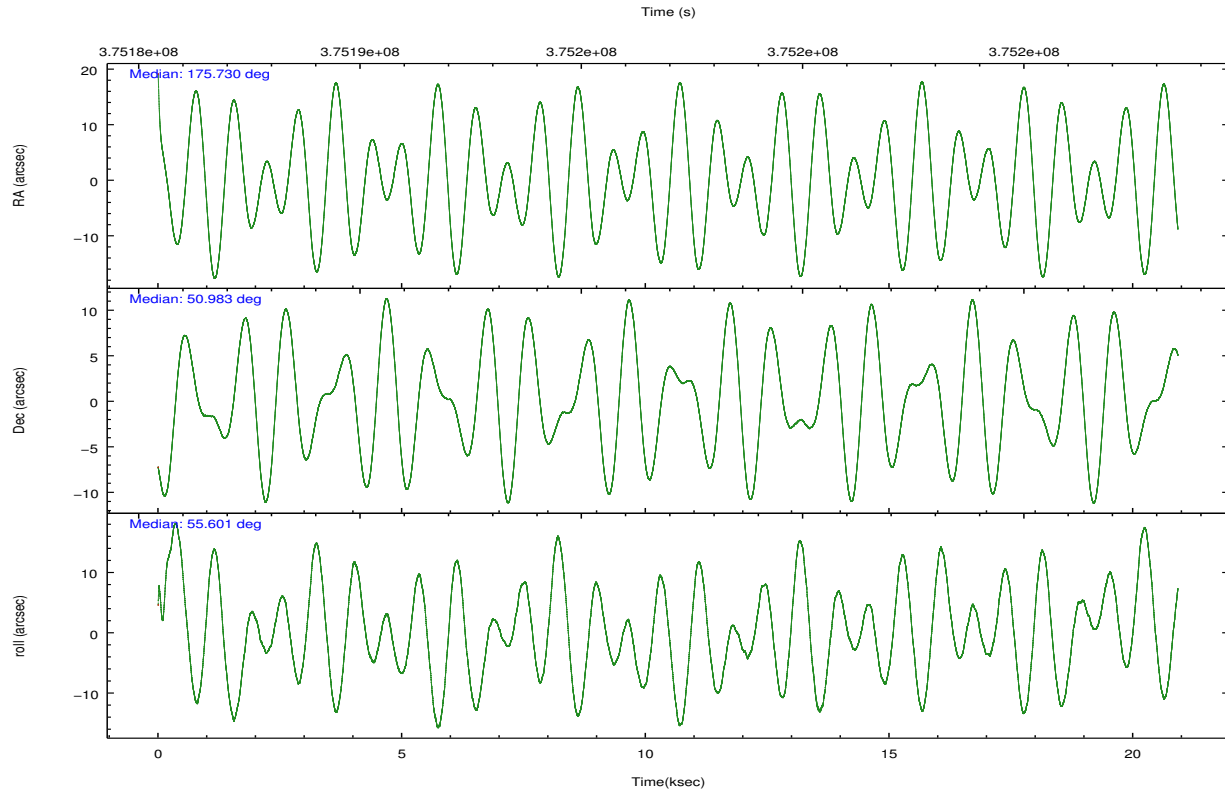
	ccd 2	ccd 3	ccd 5	ccd 6	ccd 7	ccd 8		ccd 2	ccd 3	ccd 5	ccd 6	ccd 7	ccd 8
level 1 events	172414	156057	213434	161855	159537	205976	grade 0 events	5972	5735	16364	6268	8027	14461
rejected events	156049	140808	97413	144881	80677	153173		3%	3%	7%	3%	5%	7%
rejected %	90%	90%	45%	89%	50%	74%	grade 1 events	106	95	490	94	251	156
								0%	0%	0%	0%	0%	0%
							grade 2 events	4019	3324	34077	3812	16974	12584
								2%	2%	15%	2%	10%	6%
							grade 3 events	1729	1612	4900	1723	7197	5774
								1%	1%	2%	1%	4%	2%
							grade 4 events	1763	1702	4724	1776	7203	5249
								1%	1%	2%	1%	4%	2%
							grade 5 events	4780	5745	16921	5746	17034	8860
								2%	3%	7%	3%	10%	4%
							grade 6 events	2884	2884	55972	3399	39473	14768
								1%	1%	26%	2%	24%	7%
							grade 7 events	151161	134960	79986	139037	63378	144124
								87%	86%	37%	85%	39%	69%

2.2 Compared Parameters

Parameter	Planned	Actual	Parameter	Planned	Actual
Instrument	ACIS	ACIS	Obspar format version number	7	7
Detector	ACIS-235678	ACIS-235678	Obspar file type	PREDICTED	ACTUAL
Grating	NONE	NONE	Obspar update status	NONE	UPDATED
Data mode	VFAINT	VFAINT	CCD I0 on	N	N
Observation mode	POINTING	POINTING	CCD I1 on	N	N
[deg] Pointing RA	175.727680	175.7304428863116	CCD I2 on	O2	Y
[deg] Pointing Dec	50.955944	50.98322415868419	CCD I3 on	O3	Y
[deg] Pointing Roll	55.447185	55.60168120633781	CCD S0 on	N	N
[mm] SIM focus pos	-0.684267	-0.6828225247311905	CCD S1 on	O1	Y
[mm] SIM defocus	0	0.001444936568705701	CCD S2 on	O5	Y
[mm] SIM translation stage pos	-190.132523	-190.1400660498719	CCD S3 on	Y	Y
[mm] SIM translation stage offset	0	0.00754346686406393	CCD S4 on	O4	Y
[s] Observation start time (MET)	375187245.184000	375185629.83472	CCD S5 on	N	N
Observation start date	2009-11-21T10:39:39	2009-11-21T10:13:49	Number of optional ACIS chips dropped	0	0
[s] Observation end time (MET)	375207245.184000	375208076.82335	On-chip summing requested	N	N
Observation end date	2009-11-21T16:12:59	2009-11-21T16:27:56	Subarray requested	NONE	NONE
Read mode	TIMED	TIMED	Alternating exposures requested	N	N
			[s] Primary exposure time	0.000000	3.2

2.3 Aspect



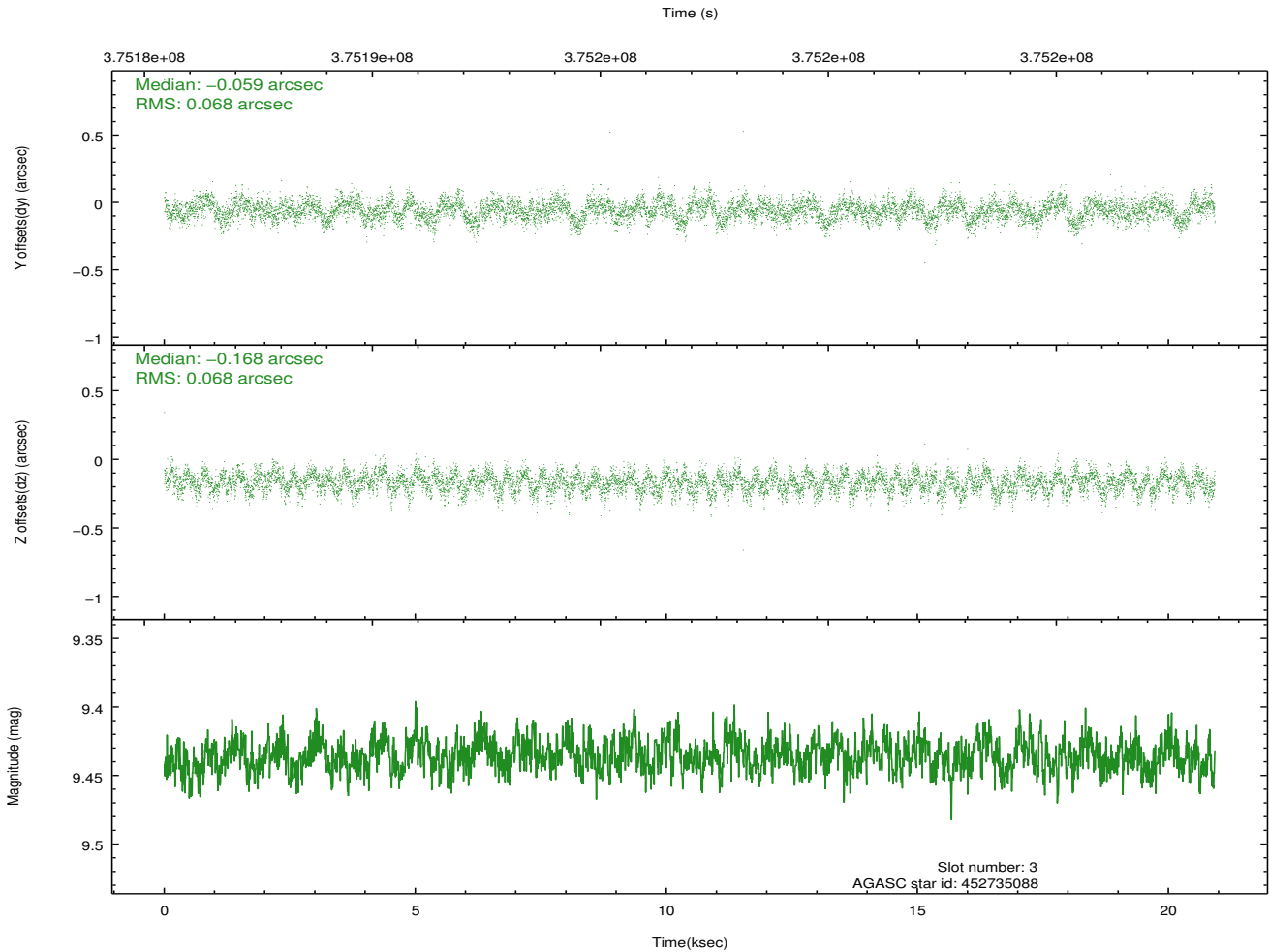
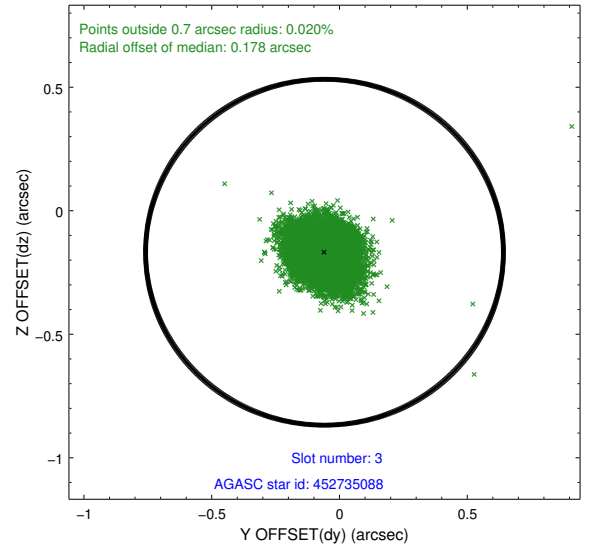
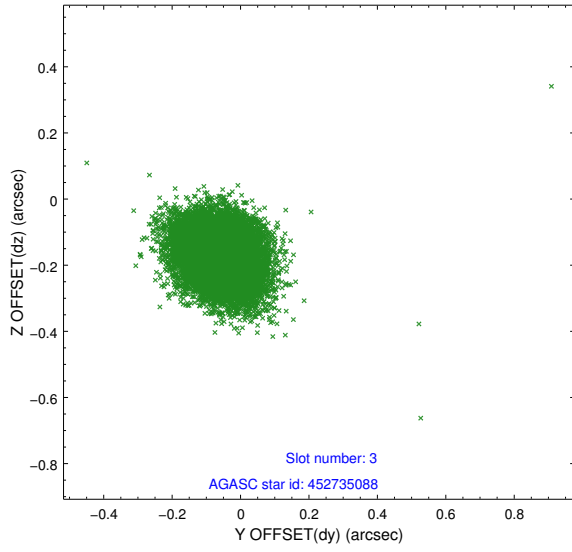


Slot Statistics

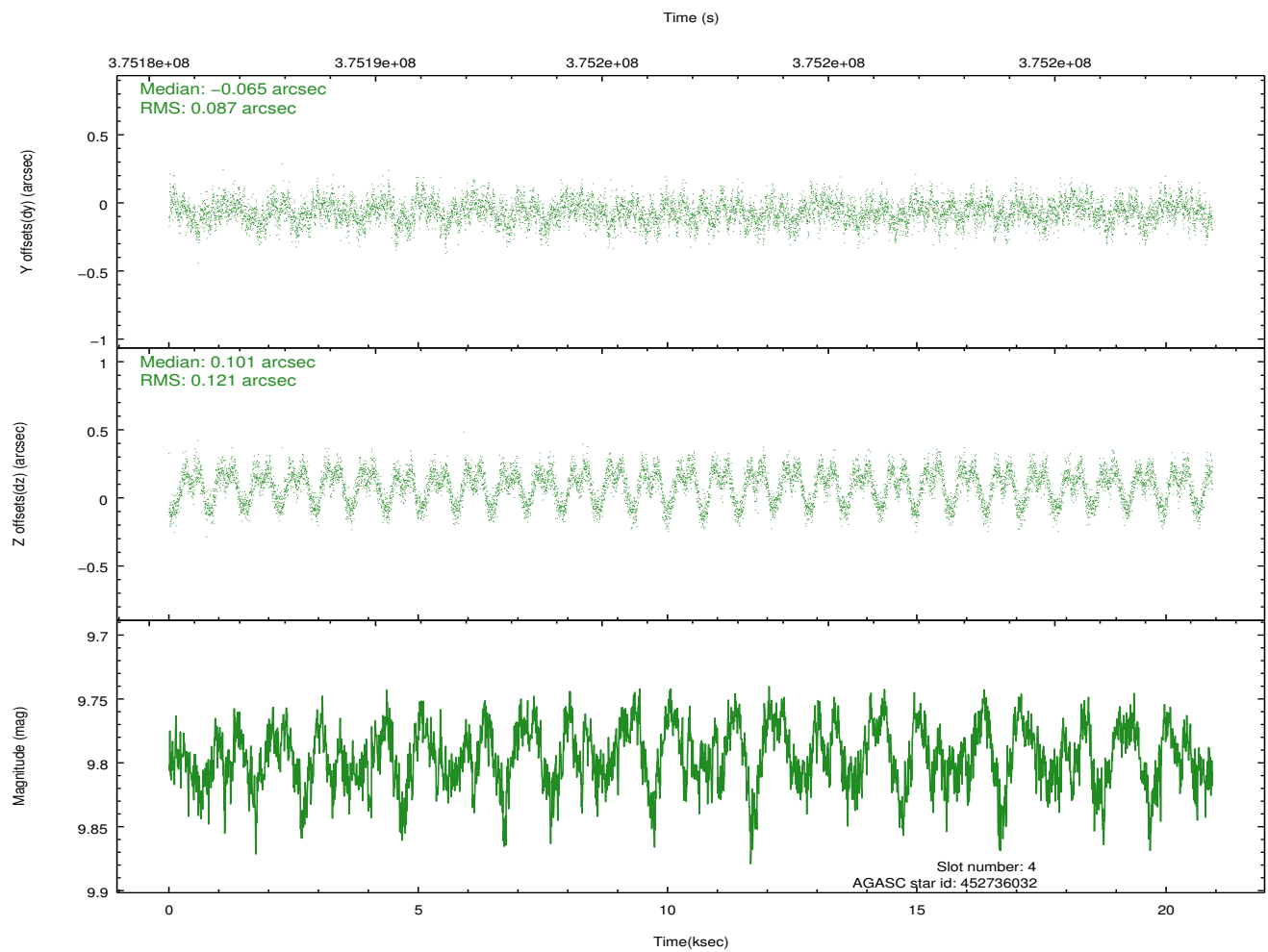
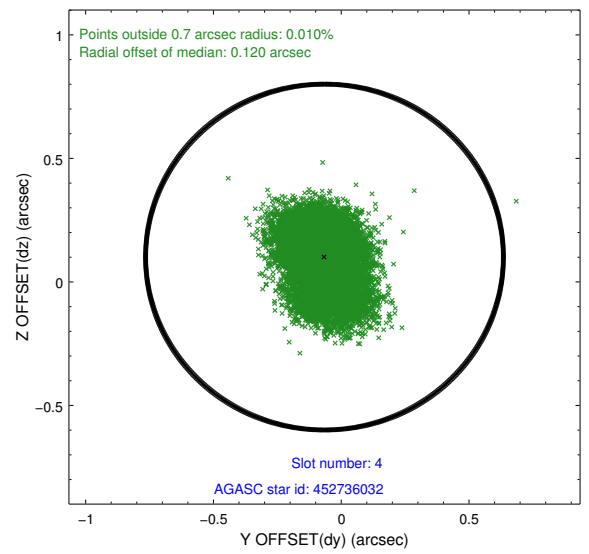
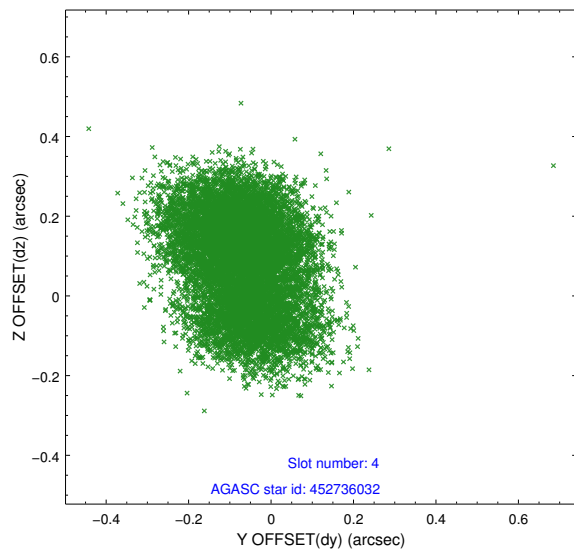
slot	status	id	mag	n_pts	med_dy	med_dz	dr1	dr2	ra	dec	mean_y	mean_z
0	FID	ACIS-S-2	6.89	5104	-0.062	-0.033	0.009	0.017	0.000000	0.000000	-766.30	-1736.40
1	FID	ACIS-S-4	6.98	5104	0.200	0.039	0.009	0.020	0.000000	0.000000	2147.13	172.03
2	FID	ACIS-S-5	7.01	5104	-0.170	0.002	0.011	0.017	0.000000	0.000000	-1819.06	165.79
3	GUIDE	452735088	9.44	10194	-0.059	-0.168	0.101	0.162	176.087412	51.094482	874.19	-385.52
4	GUIDE	452736032	9.80	10172	-0.065	0.101	0.162	0.251	176.666602	51.160729	1821.18	-1319.51
5	GUIDE	452736224	9.06	10198	-0.099	-0.007	0.103	0.164	176.764586	50.971809	1393.98	-1894.89
6	GUIDE	452736584	7.98	10205	-0.040	0.295	0.084	0.134	176.535690	50.563566	-106.42	-2316.61
7	GUIDE	452738872	9.27	10198	0.262	-0.212	0.096	0.153	175.827129	50.610480	-894.48	-892.34

2.4 Star Slots

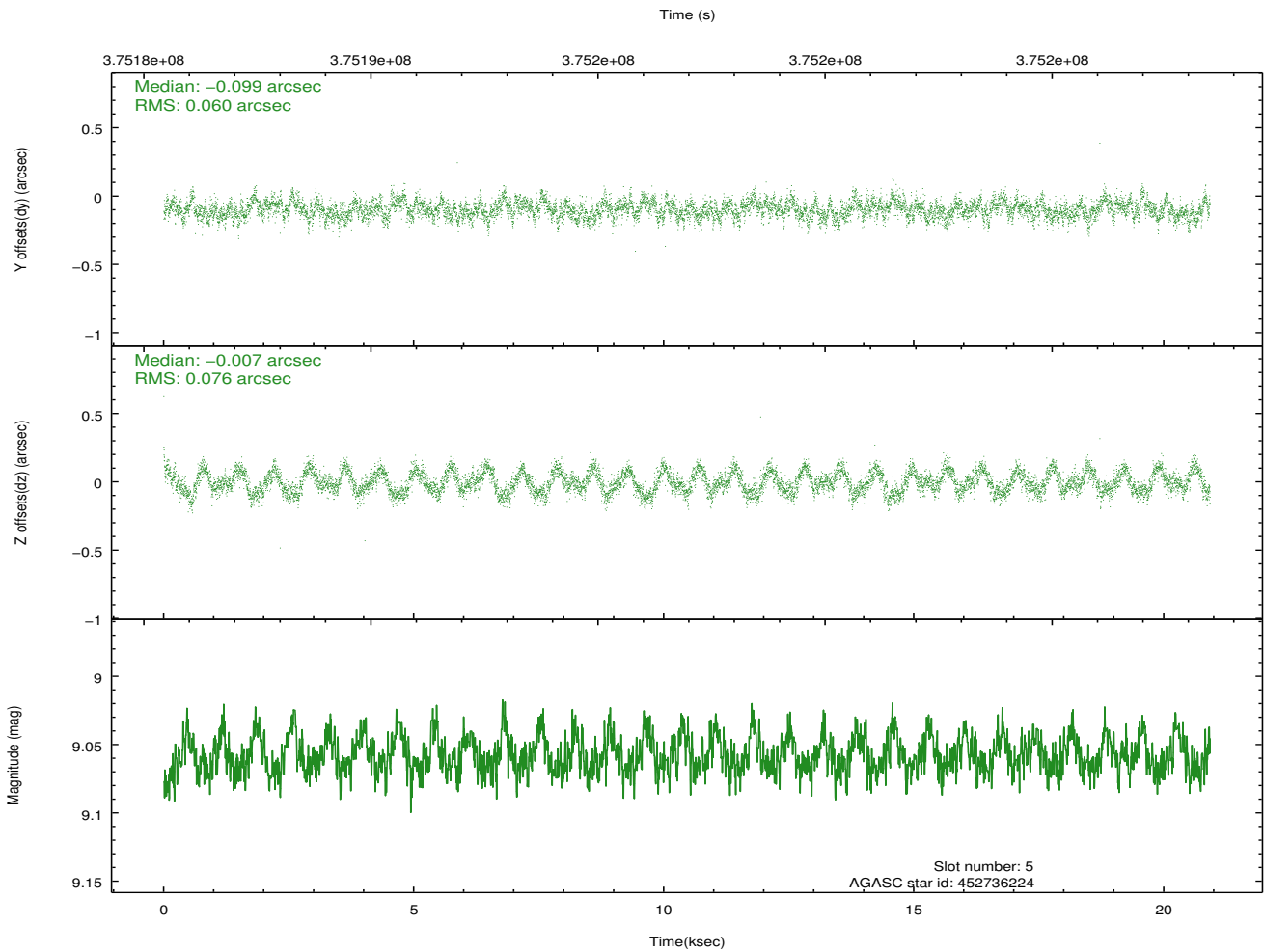
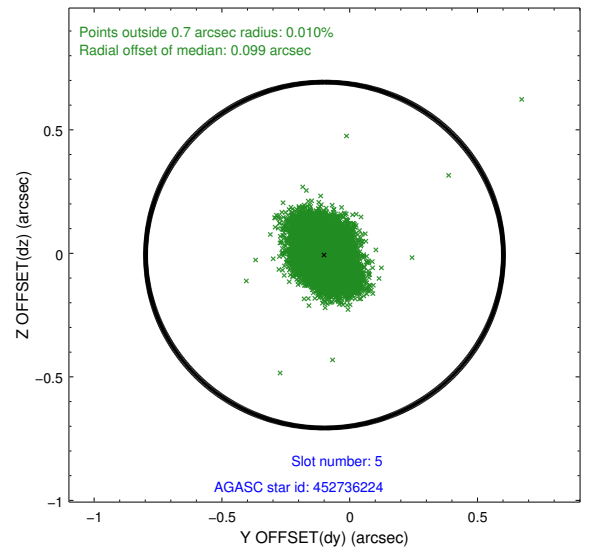
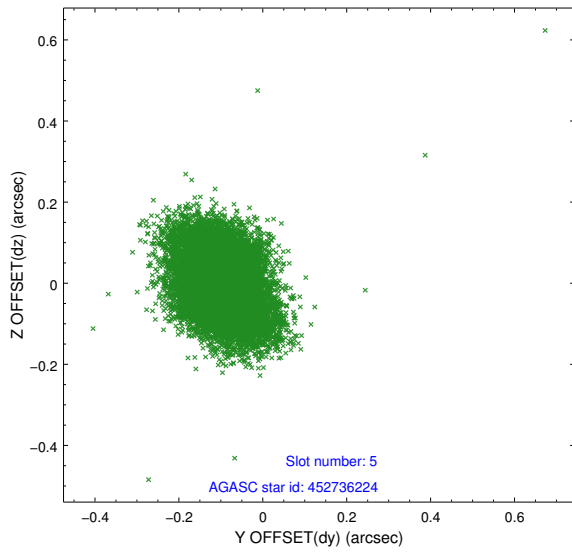
2.4.1 Slot 3



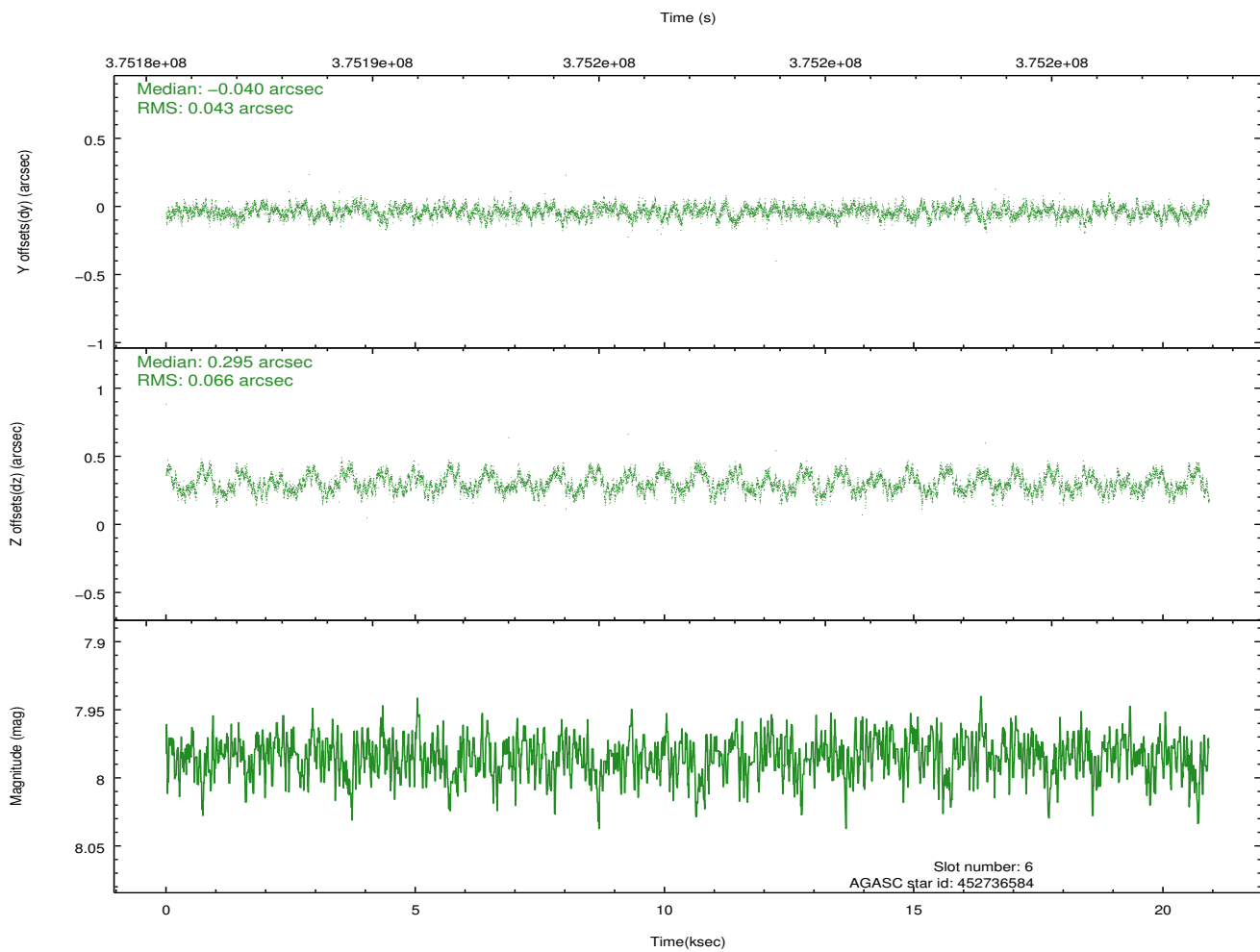
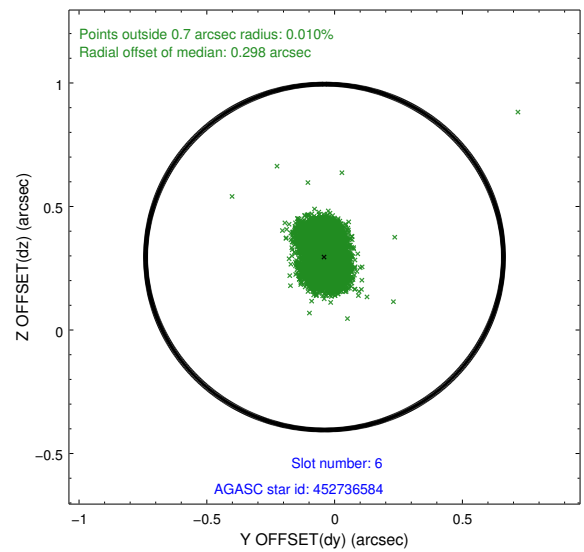
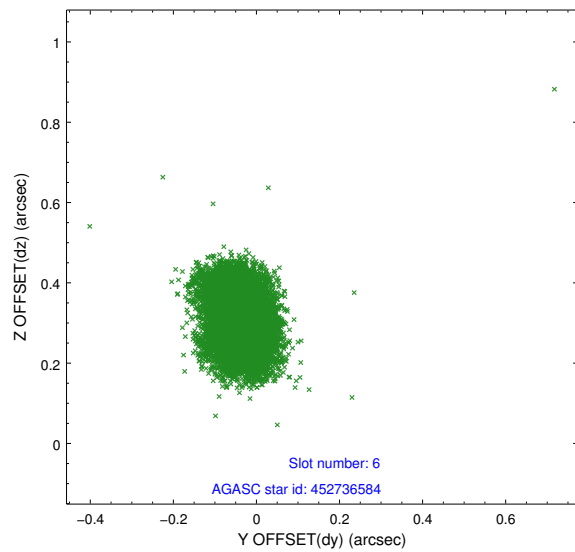
2.4.2 Slot 4



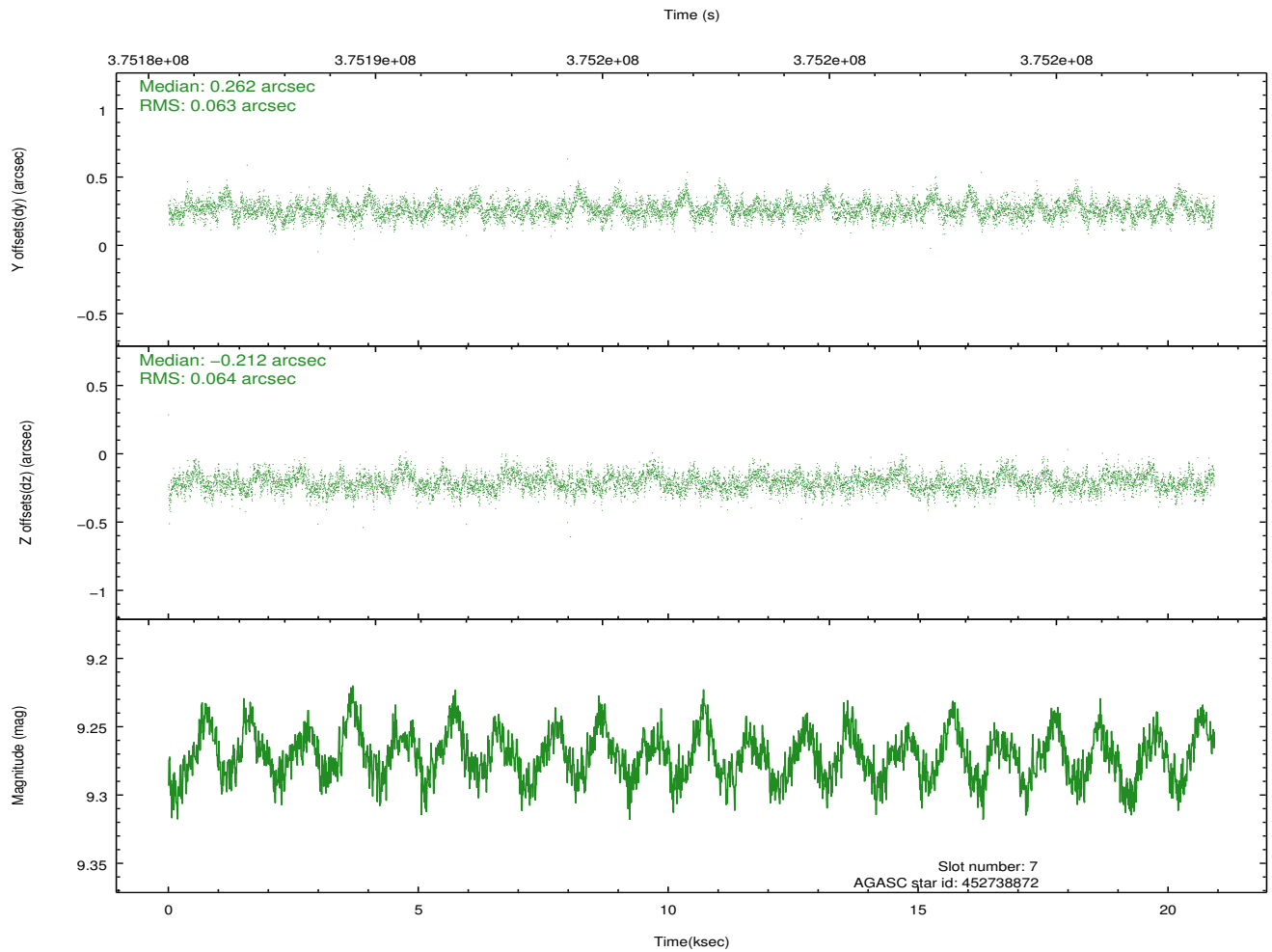
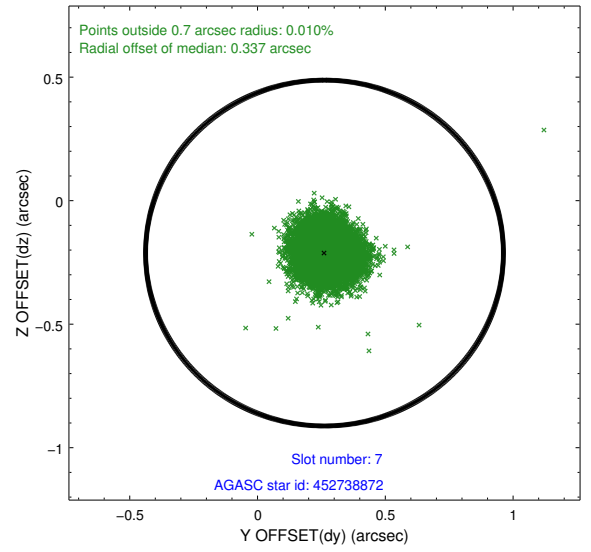
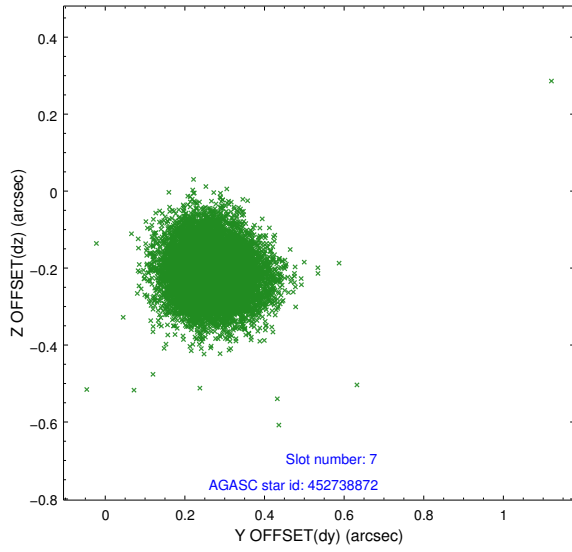
2.4.3 Slot 5



2.4.4 Slot 6

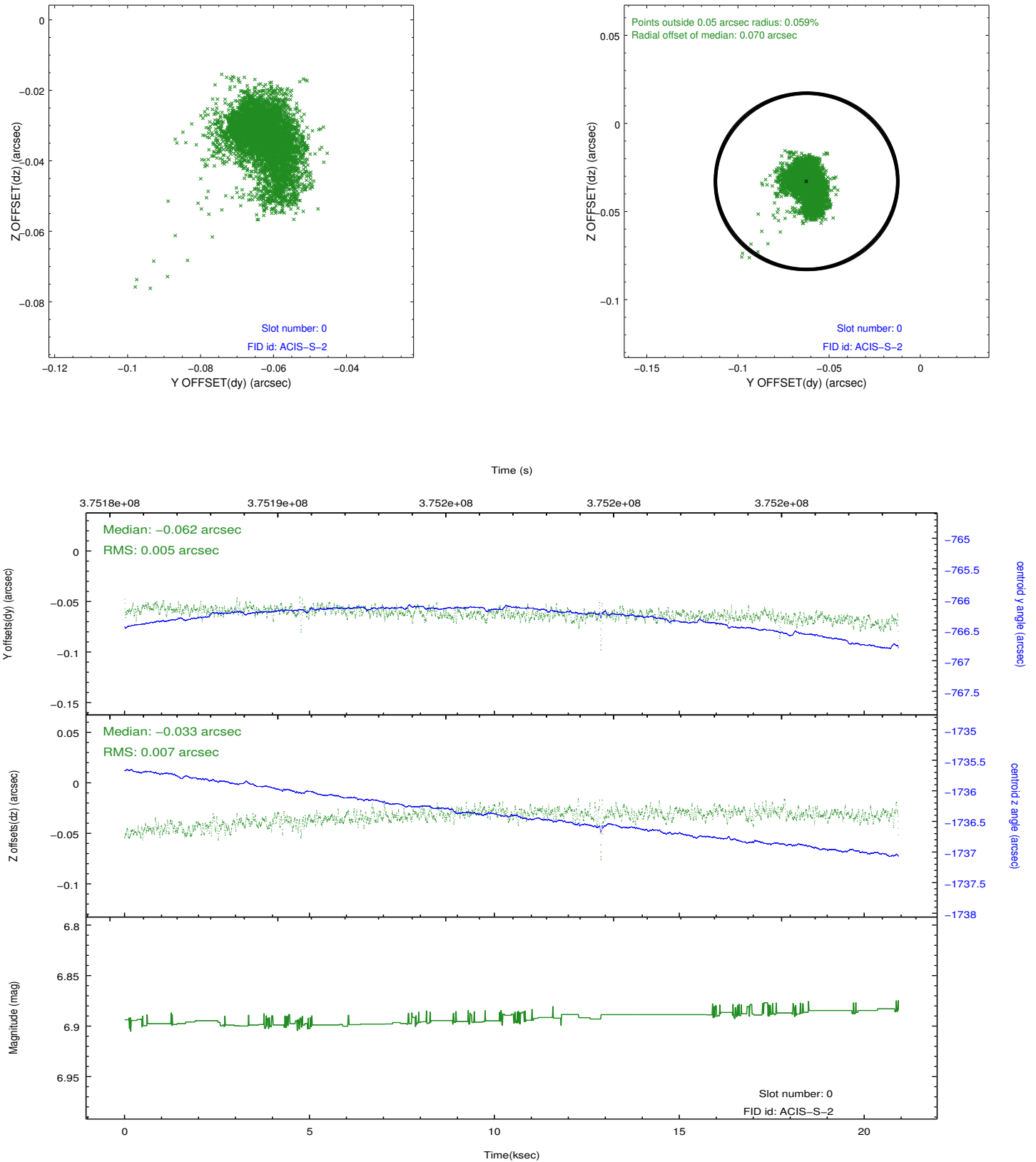


2.4.5 Slot 7

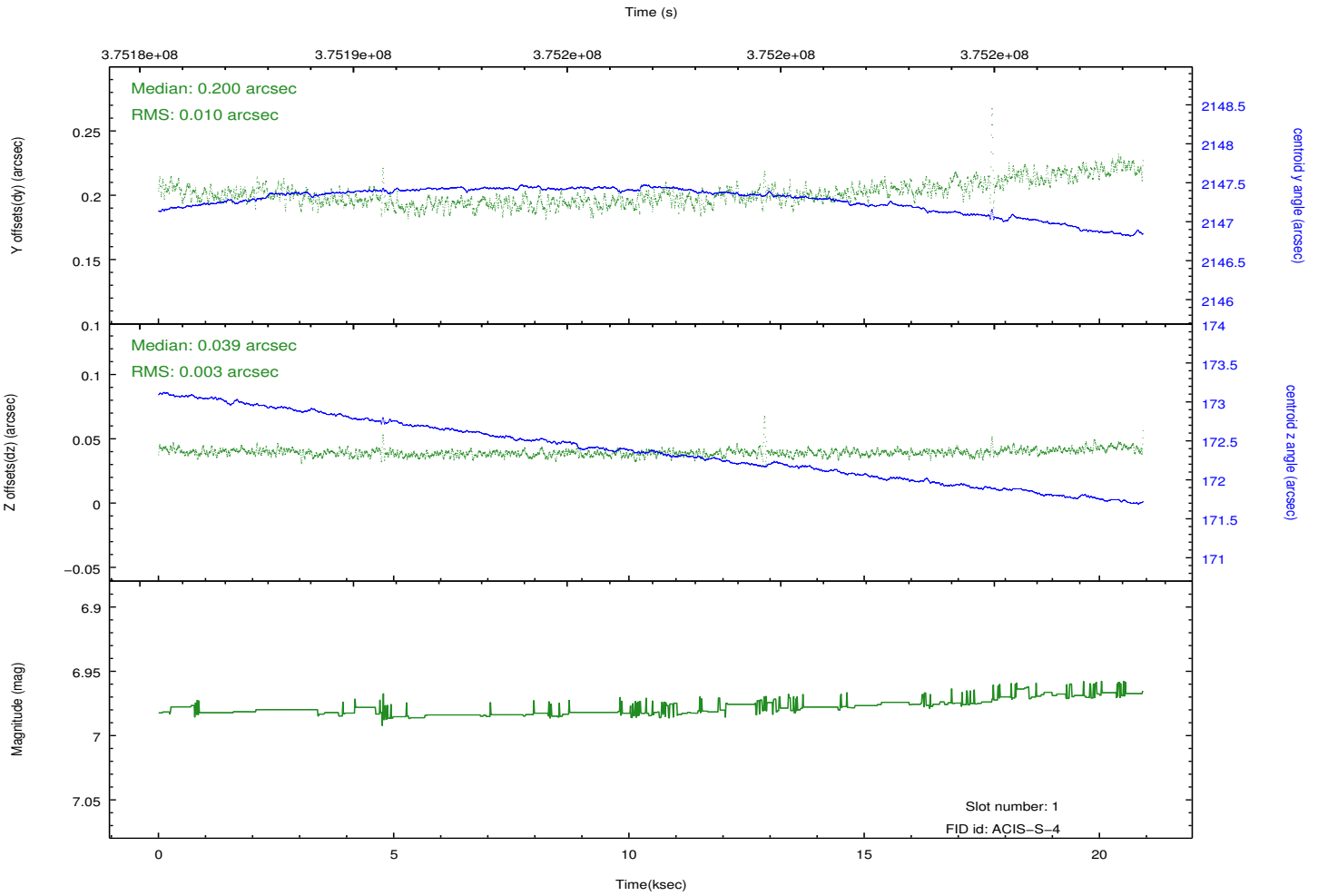
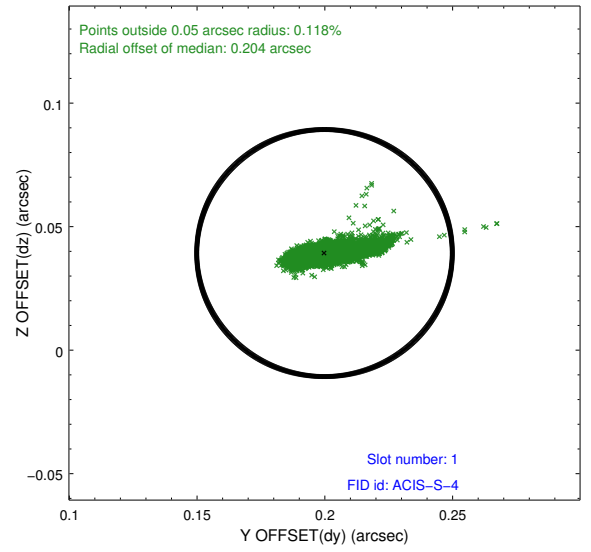
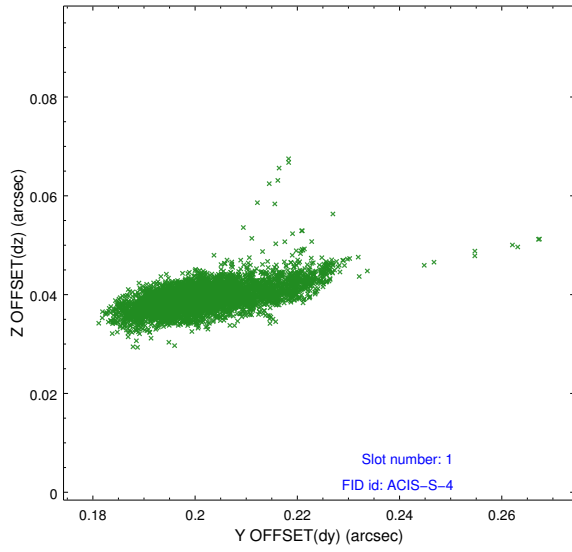


2.5 FID Slots

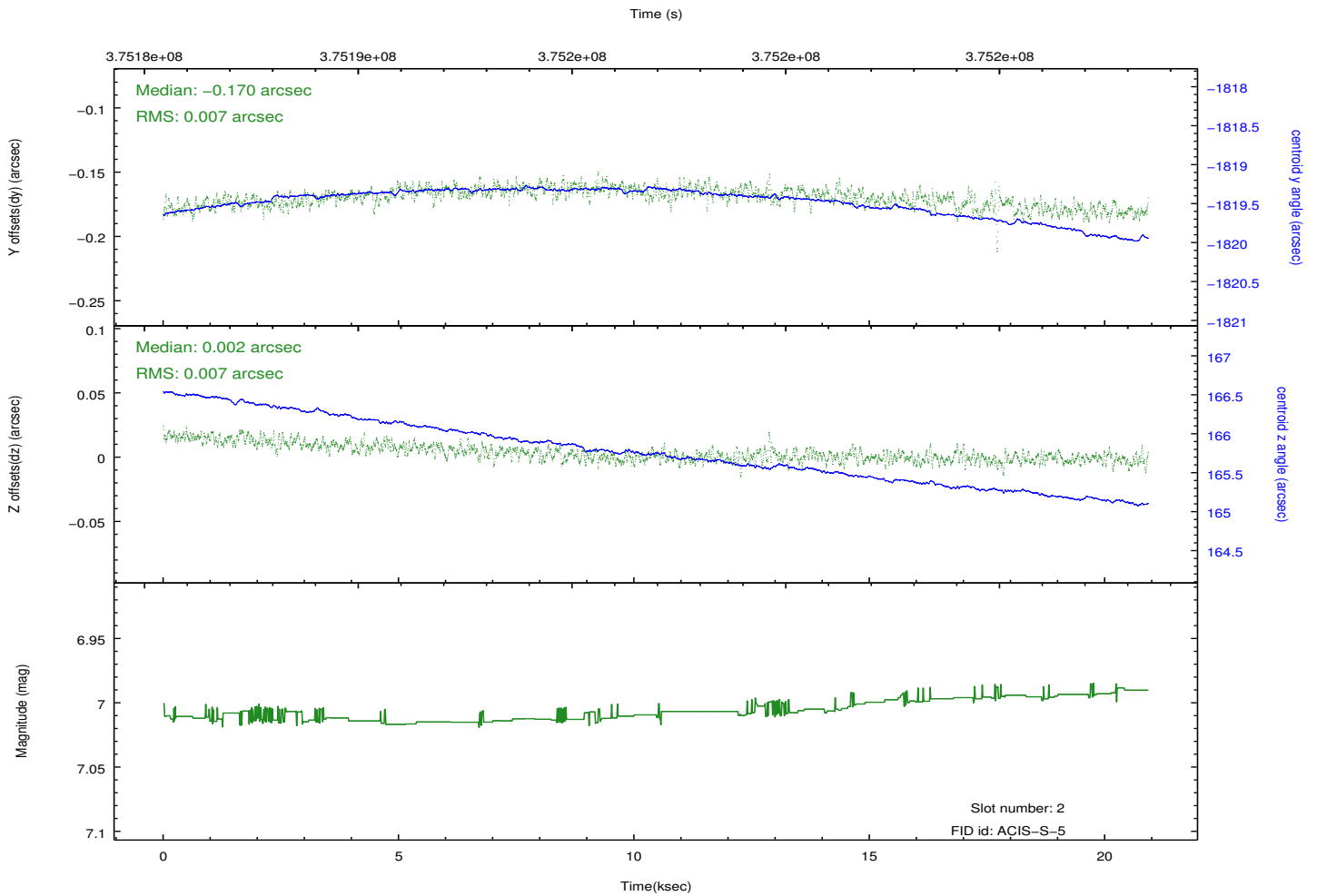
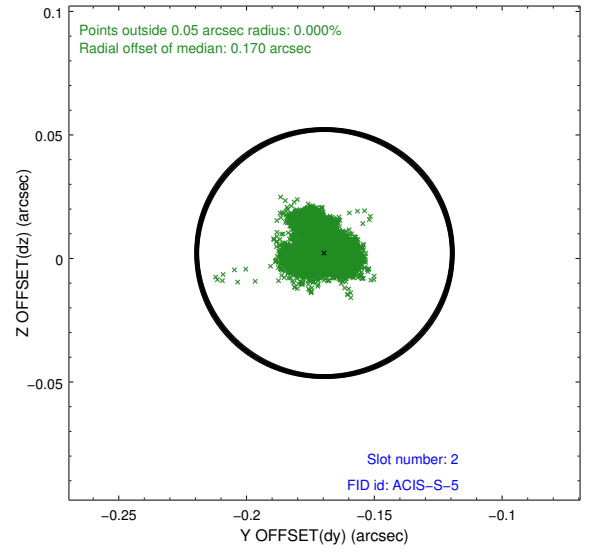
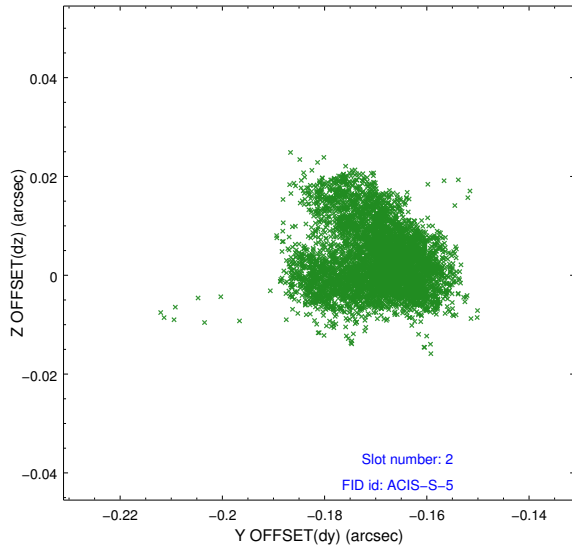
2.5.1 Slot 0



2.5.2 Slot 1



2.5.3 Slot 2



A Summary

A.1 Status

V&V Scientist	Beth Sundheim
V&V Date (YYYY-MM-DD)	2012.06.20
V&V Edition	1
V&V Disposition and Status	OK
V&V Charge Time	20.217533106923

A.2 Comments