

# V&V Reference Report

## L2 ASCDS Version : 8.4.5

Observation 12217 - L2 Version 2  
Chandra X-Ray Center

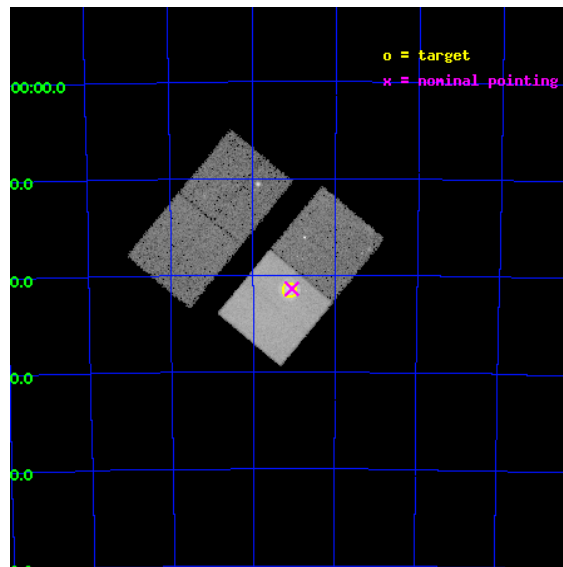
L2 Processing Date : Jun 26 2012

## Contents

<b>1</b>	<b>Front</b>	<b>2</b>
<b>2</b>	<b>OBI</b>	<b>3</b>
2.1	OBI . . . . .	3
2.1.1	Images . . . . .	3
2.1.2	Bias . . . . .	3
2.1.3	Parameters . . . . .	4
2.1.4	Events . . . . .	4
2.2	Compared Parameters . . . . .	5
2.3	Aspect . . . . .	6
2.4	Star Slots . . . . .	9
2.4.1	Slot 3 . . . . .	9
2.4.2	Slot 4 . . . . .	10
2.4.3	Slot 5 . . . . .	11
2.4.4	Slot 6 . . . . .	12
2.4.5	Slot 7 . . . . .	13
2.5	FID Slots . . . . .	14
2.5.1	Slot 0 . . . . .	14
2.5.2	Slot 1 . . . . .	15
2.5.3	Slot 2 . . . . .	16
<b>A</b>	<b>Summary</b>	<b>17</b>
A.1	Status . . . . .	17
A.2	Comments . . . . .	17

# 1 Front

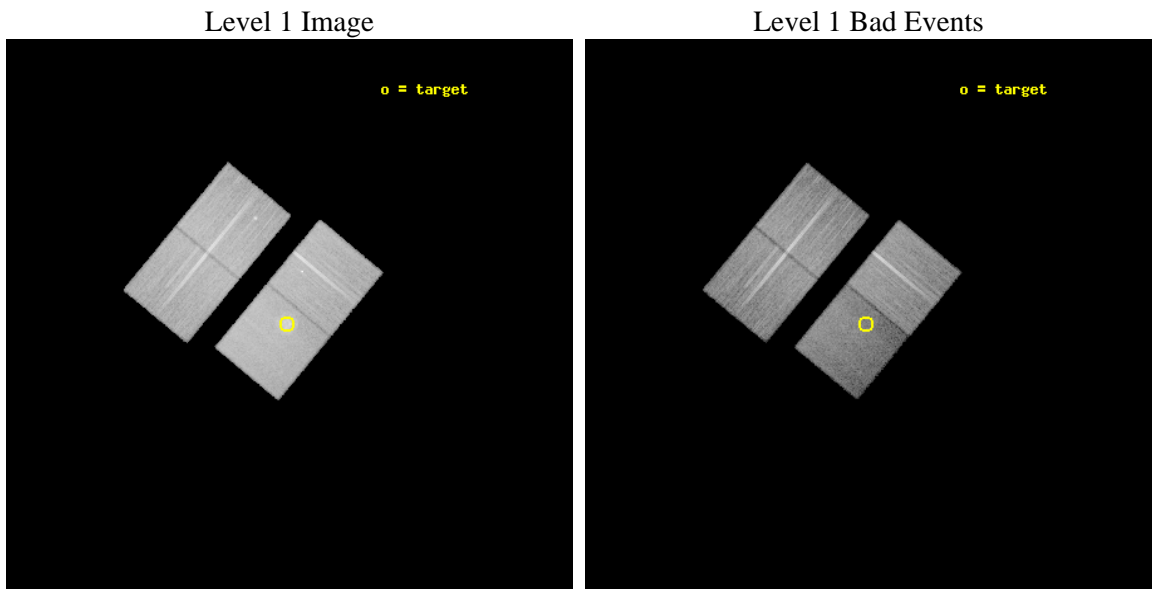
seq_num	501185	Sequence number
obs_id	12217	Observation id
title	A Detailed Study of the Aged O-Rich Supernova Remnant 0049-73.6	Pr
observer	DR. Sangwook Park	Principal investigator
object	SNR 0049-73.6	Source name
dtcycle	0	&#160
cycle	P	events from which exps? Prim/Second/Both
ra_targ	12.779167	Observer's specified target RA [deg]
dec_targ	-73.358333	Observer's specified target Dec [deg]
ra_nom	12.763099283459	Nominal RA [deg]
dec_nom	-73.356769491139	Nominal Dec [deg]
roll_nom	129.64122301861	Nominal Roll [deg]
revision	2	Processing version of data
ontime	29050.100223422	Sum of GTIs [s]
livetime	28670.53927763	Livetime [s]
ontime2	29037.536342144	Sum of GTIs [s]
ontime3	29046.959233165	Sum of GTIs [s]
ontime6	29046.959243059	Sum of GTIs [s]
ontime7	29050.100223422	Sum of GTIs [s]
l2events	170389	Number of level 2 events



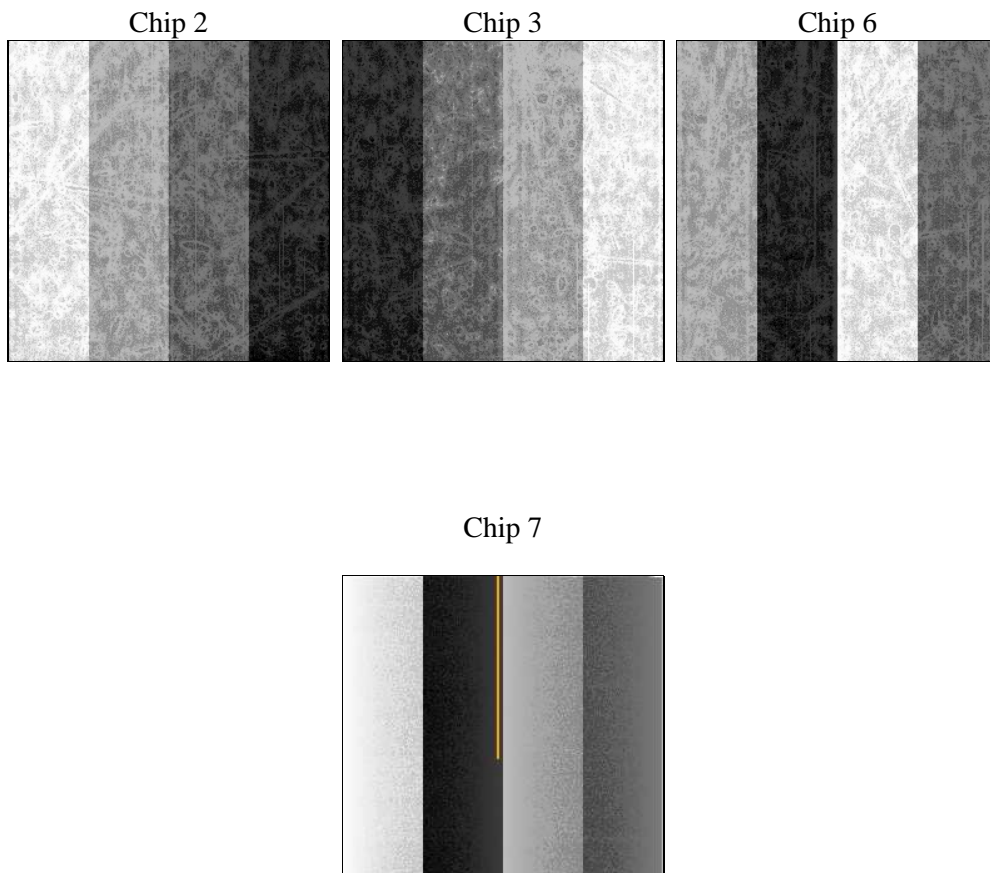
## 2 OBI

### 2.1 OBI

#### 2.1.1 Images



#### 2.1.2 Bias



### 2.1.3 Parameters

obi_num	0	Obi number	sched_exp_time	29000.000000	[s] Scheduled observation exposure time
ascdsver	8.4.5	Processing system revision	ontime	29050.100223422	Sum of GTIs [s]
caldbver	4.4.10	&#160	ontime2	29037.536342144	Sum of GTIs [s]
date	2012-06-26T14:23:48	Date and time of file creation	ontime3	29046.959233165	Sum of GTIs [s]
revision	2	Processing version of data	ontime6	29046.959243059	Sum of GTIs [s]
			ontime7	29050.100223422	Sum of GTIs [s]
			l1events	858605	Number of level 1 events

### 2.1.4 Events

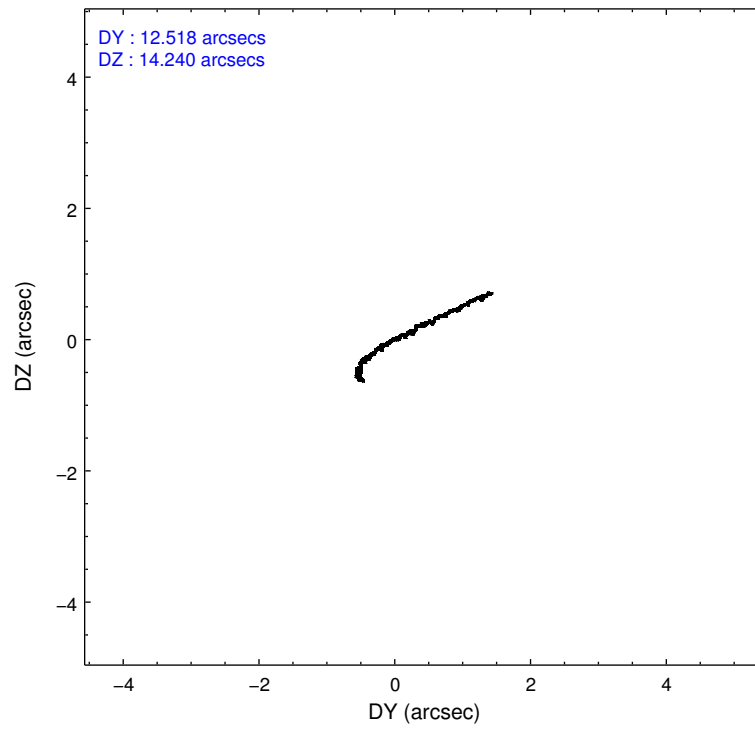
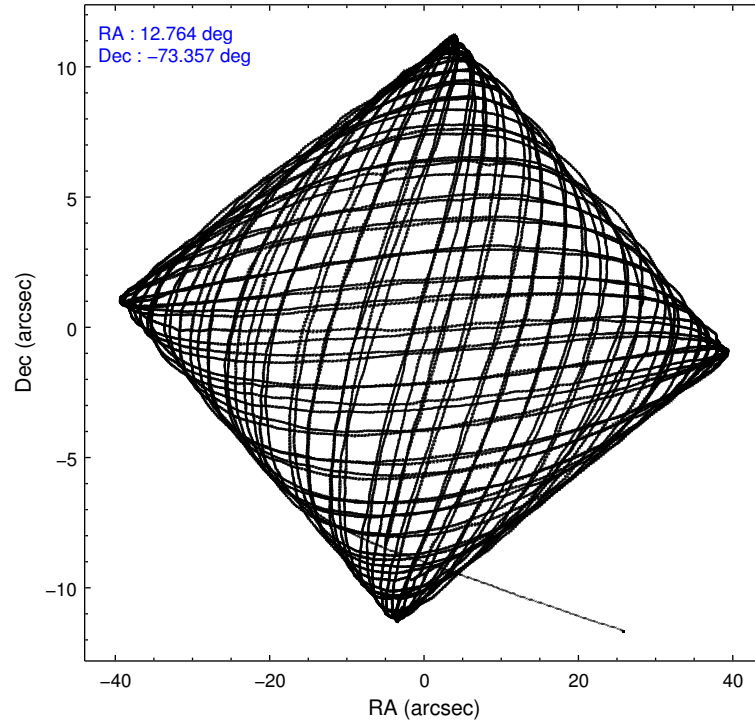
	ccd 2	ccd 3	ccd 6	ccd 7
level 1 events	214984	202315	215865	225441
rejected events	192109	181675	191314	109686
rejected %	89%	89%	88%	48%

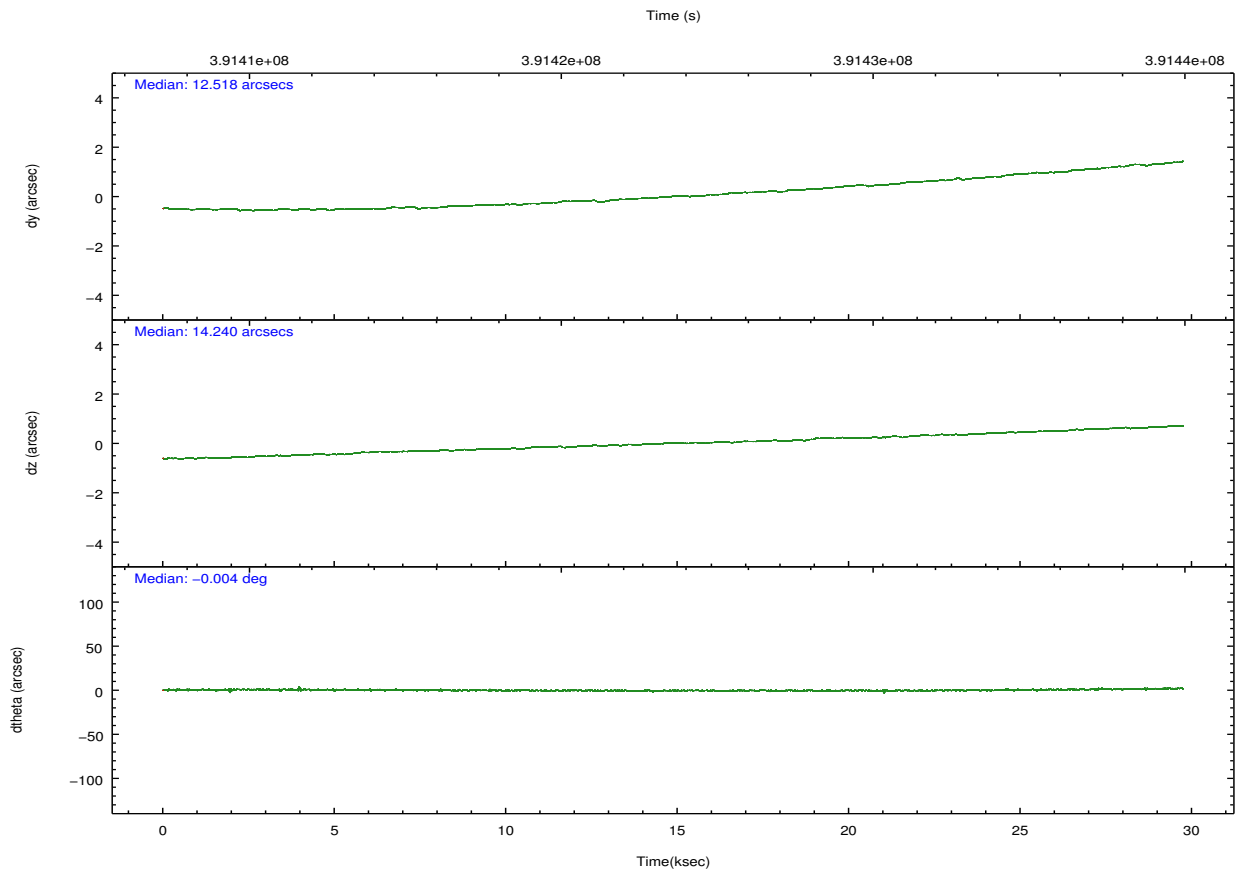
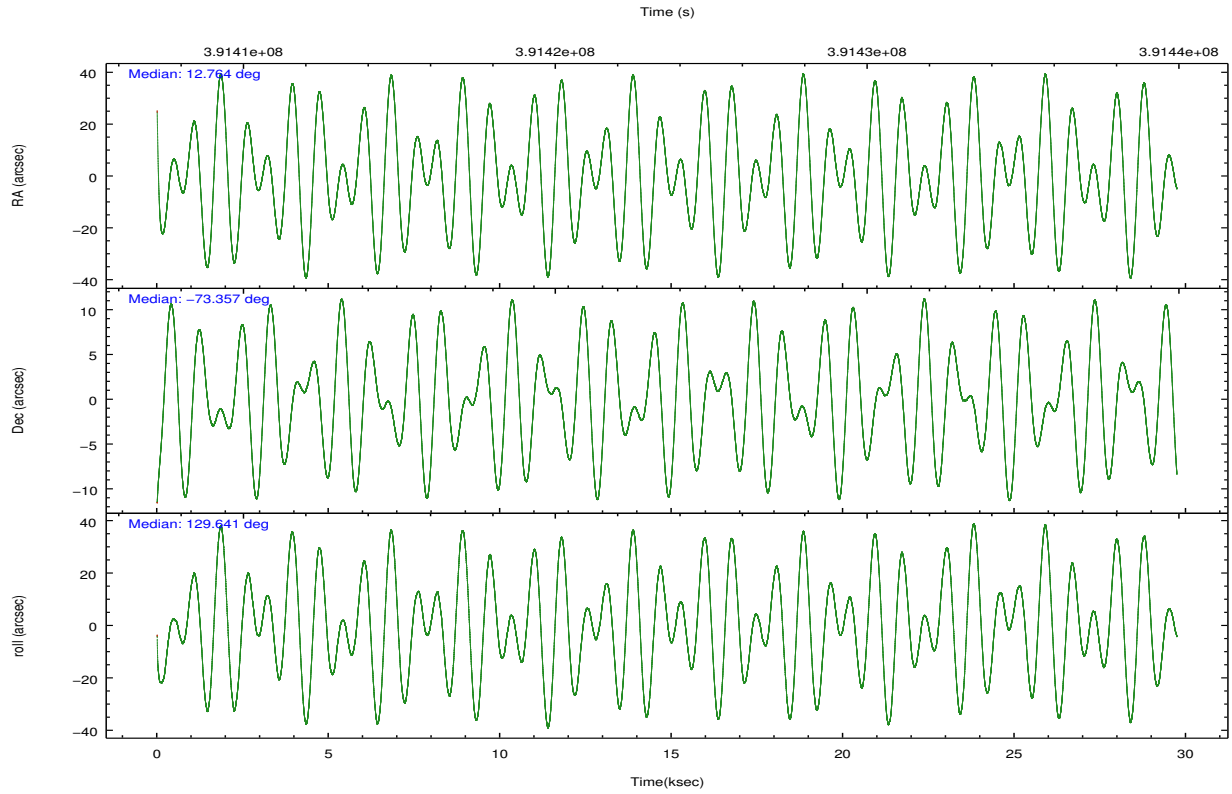
	ccd 2	ccd 3	ccd 6	ccd 7
grade 0 events	9073	7525	9510	14888
	4%	3%	4%	6%
grade 1 events	114	127	130	285
	0%	0%	0%	0%
grade 2 events	5470	4505	5368	25153
	2%	2%	2%	11%
grade 3 events	2233	2268	2442	10876
	1%	1%	1%	4%
grade 4 events	2330	2334	2373	10651
	1%	1%	1%	4%
grade 5 events	6513	7964	7899	23048
	3%	3%	3%	10%
grade 6 events	3771	4008	4859	54200
	1%	1%	2%	24%
grade 7 events	185480	173584	183284	86340
	86%	85%	84%	38%

## 2.2 Compared Parameters

Parameter	Planned	Actual	Parameter	Planned	Actual
Instrument	ACIS	ACIS	Obspar format version number	7	7
Detector	ACIS-2367	ACIS-2367	Obspar file type	PREDICTED	ACTUAL
Grating	NONE	NONE	Obspar update status	NONE	UPDATED
Data mode	VFAINT	VFAINT	Number of optional ACIS chips dropped	0	0
Observation mode	POINTING	POINTING	On-chip summing requested	N	N
[deg] Pointing RA	12.853123	12.7630992834587	Subarray requested	NONE	NONE
[deg] Pointing Dec	-73.365925	-73.35676949113889	Alternating exposures requested	N	N
[deg] Pointing Roll	129.570858	129.6412230186133	[s] Primary exposure time	0.000000	3.1
[mm] SIM focus pos	-0.684267	-0.6828225247311905			
[mm] SIM defocus	0	0.001444936568705701			
[mm] SIM translation stage pos	-190.132523	-190.1400660498719			
[mm] SIM translation stage offset	0	0.00754346686406393			
[s] Observation start time (MET)	391409454.184000	391407895.14457			
Observation start date	2010-05-28T04:49:48	2010-05-28T04:24:55			
[s] Observation end time (MET)	391438454.184000	391439095.63366			
Observation end date	2010-05-28T12:53:08	2010-05-28T13:04:55			
Read mode	TIMED	TIMED			

## 2.3 Aspect



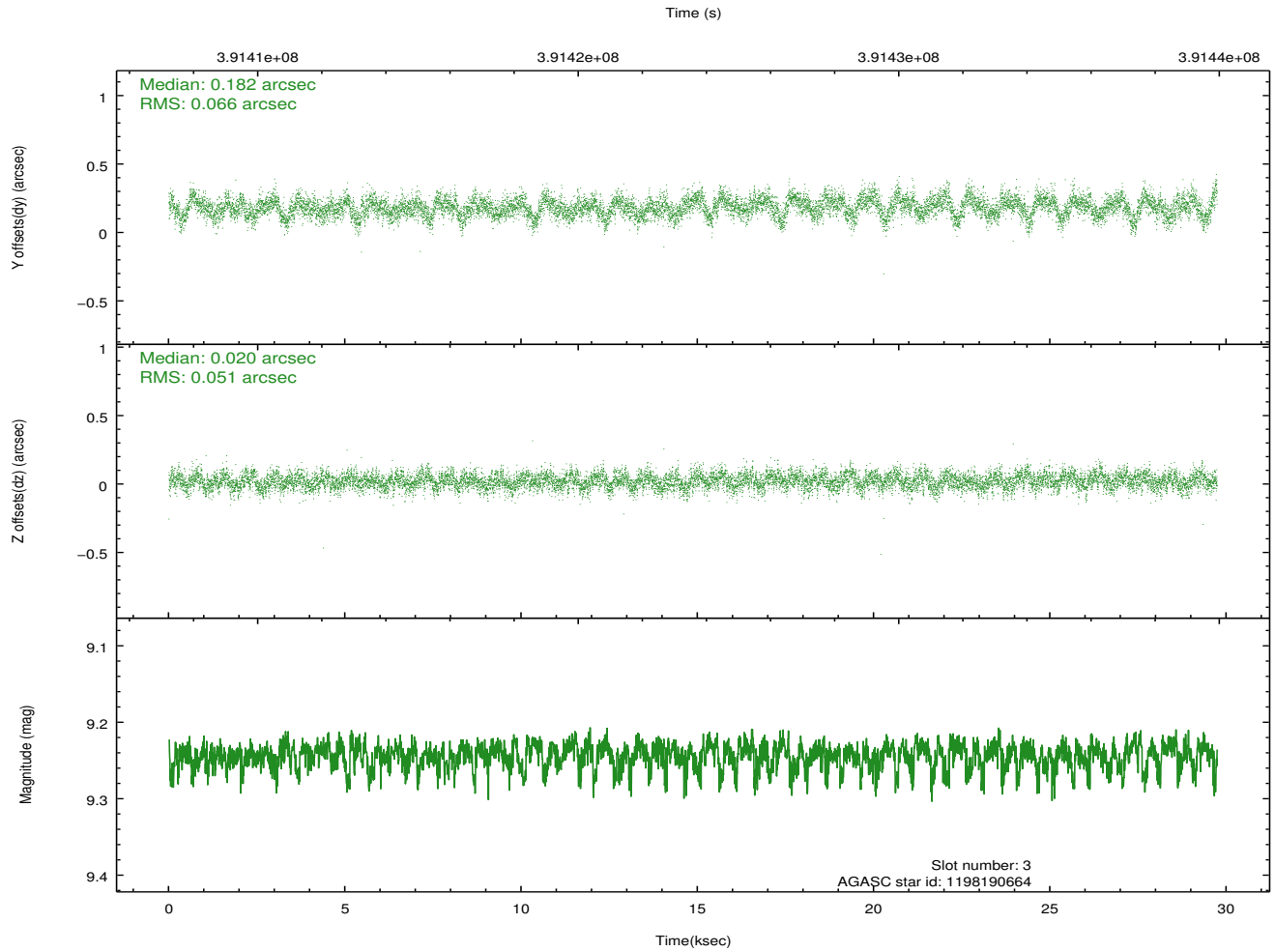
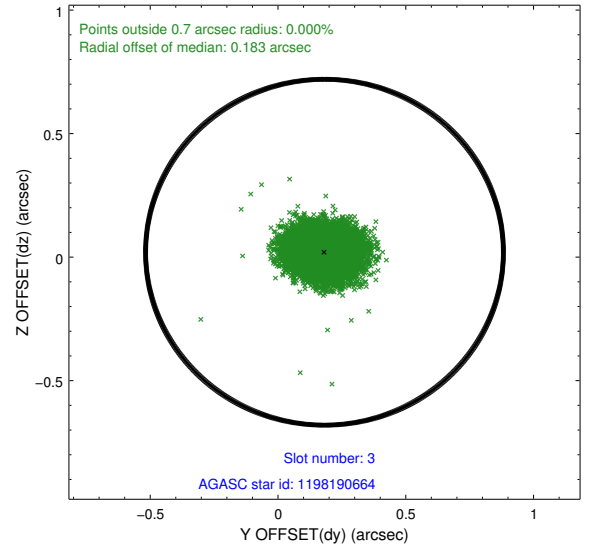
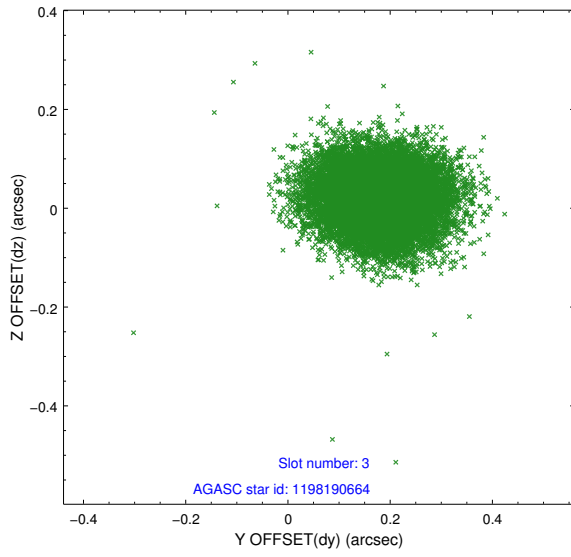


### Slot Statistics

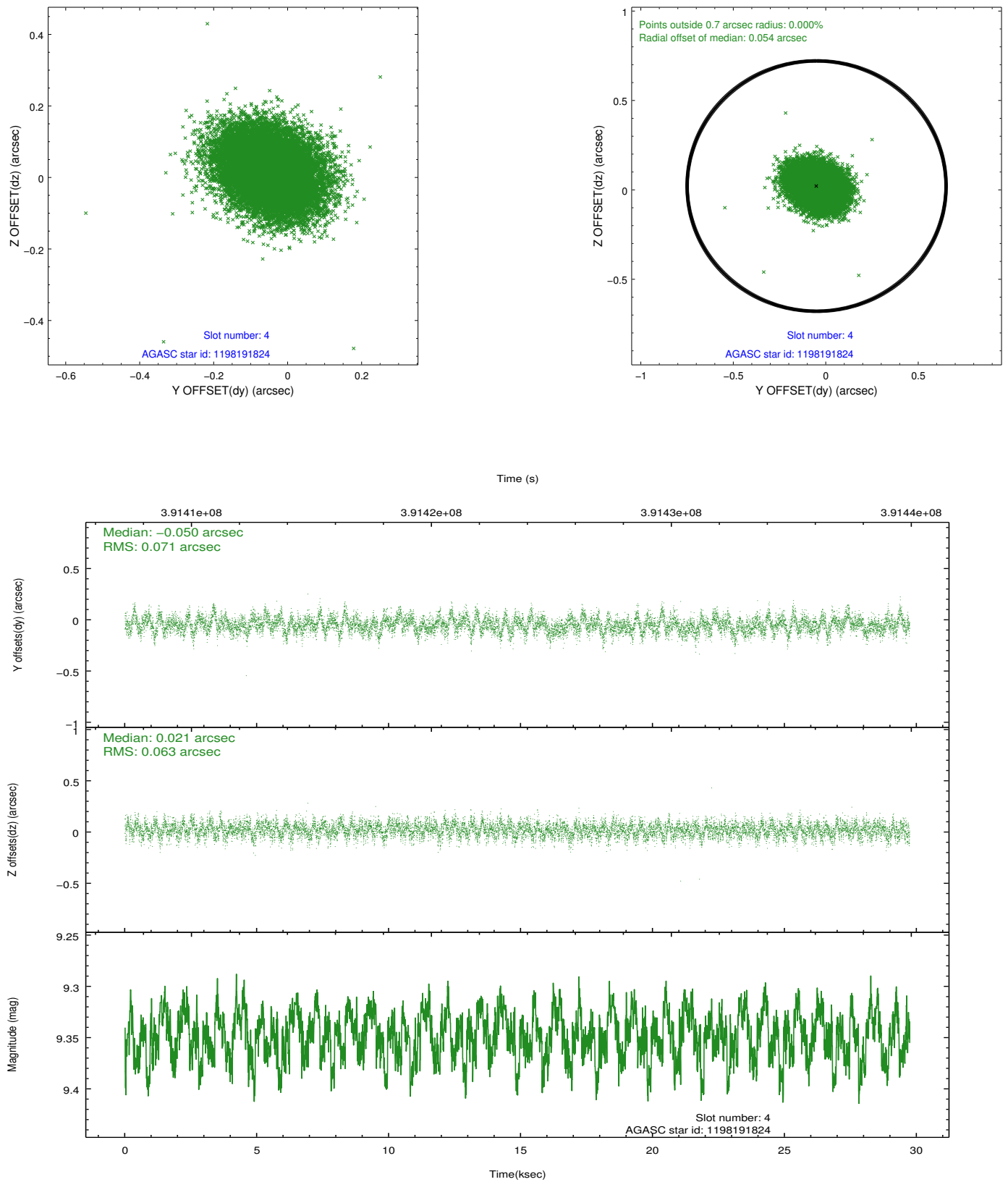
slot	status	id	mag	n_pts	med_dy	med_dz	dr1	dr2	ra	dec	mean_y	mean_z
0	FID	ACIS-S-2	6.90	7254	-0.095	-0.063	0.017	0.046	0.000000	0.000000	-765.65	-1735.67
1	FID	ACIS-S-4	6.99	7254	0.106	0.047	0.014	0.033	0.000000	0.000000	2147.79	172.85
2	FID	ACIS-S-6	7.13	7252	-0.037	0.023	0.010	0.016	0.000000	0.000000	396.48	810.30
3	GUIDE	1198190664	9.24	14478	0.182	0.020	0.087	0.143	14.057016	-73.825958	-2055.05	132.41
4	GUIDE	1198191824	9.35	14477	-0.050	0.021	0.101	0.164	11.519918	-73.478175	546.30	1319.24
5	GUIDE	1198192408	9.39	14479	-0.075	0.117	0.103	0.172	12.860639	-72.678863	1901.61	-1581.51
6	GUIDE	1198192456	8.58	14498	0.111	-0.008	0.073	0.118	13.422921	-73.869405	-1761.75	717.22
7	GUIDE	1198192088	9.19	14484	-0.167	-0.150	0.119	0.182	11.250657	-73.229216	1422.48	983.87

## 2.4 Star Slots

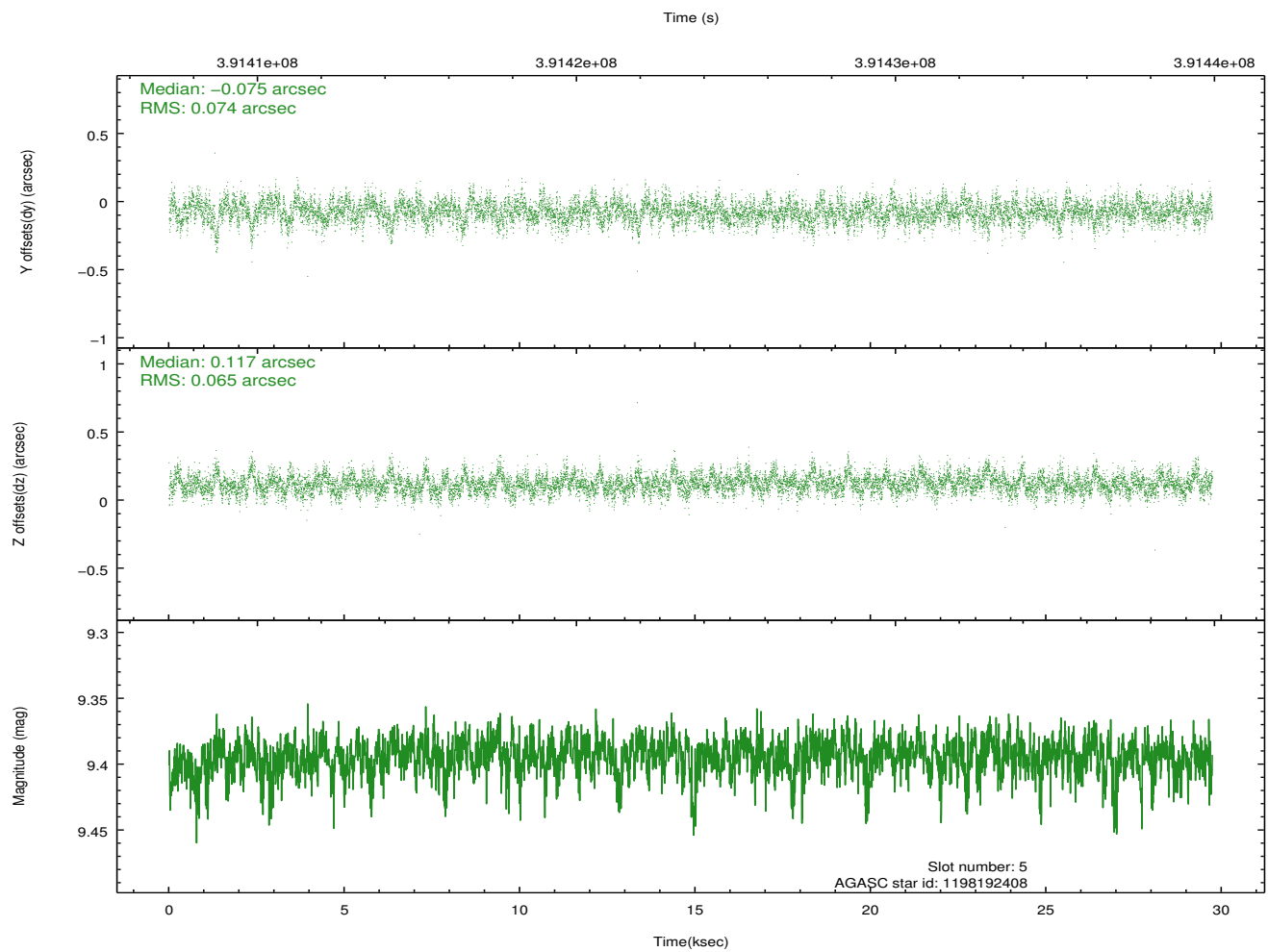
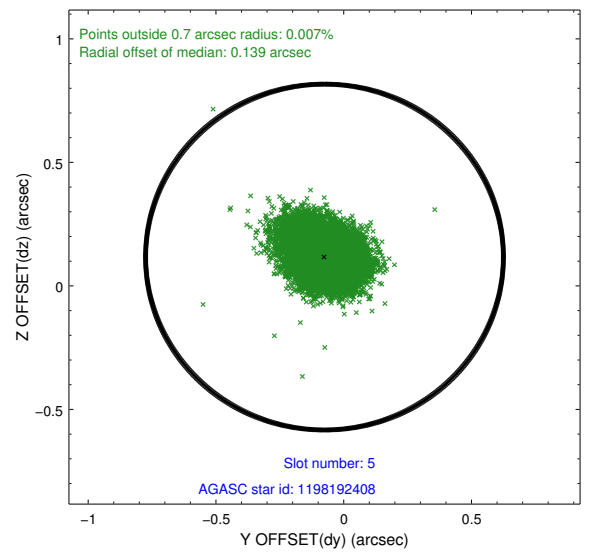
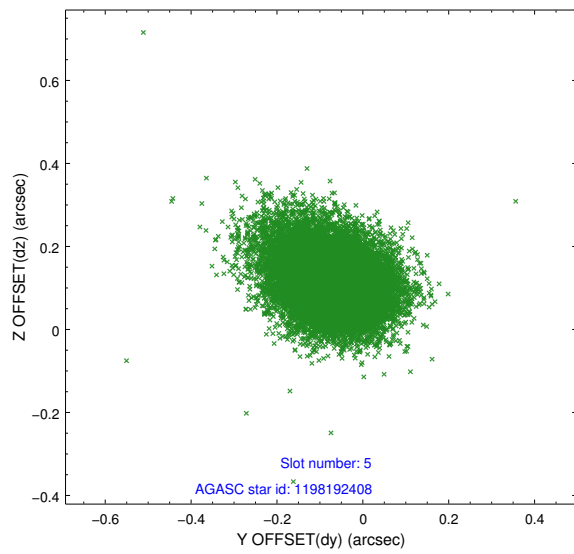
### 2.4.1 Slot 3



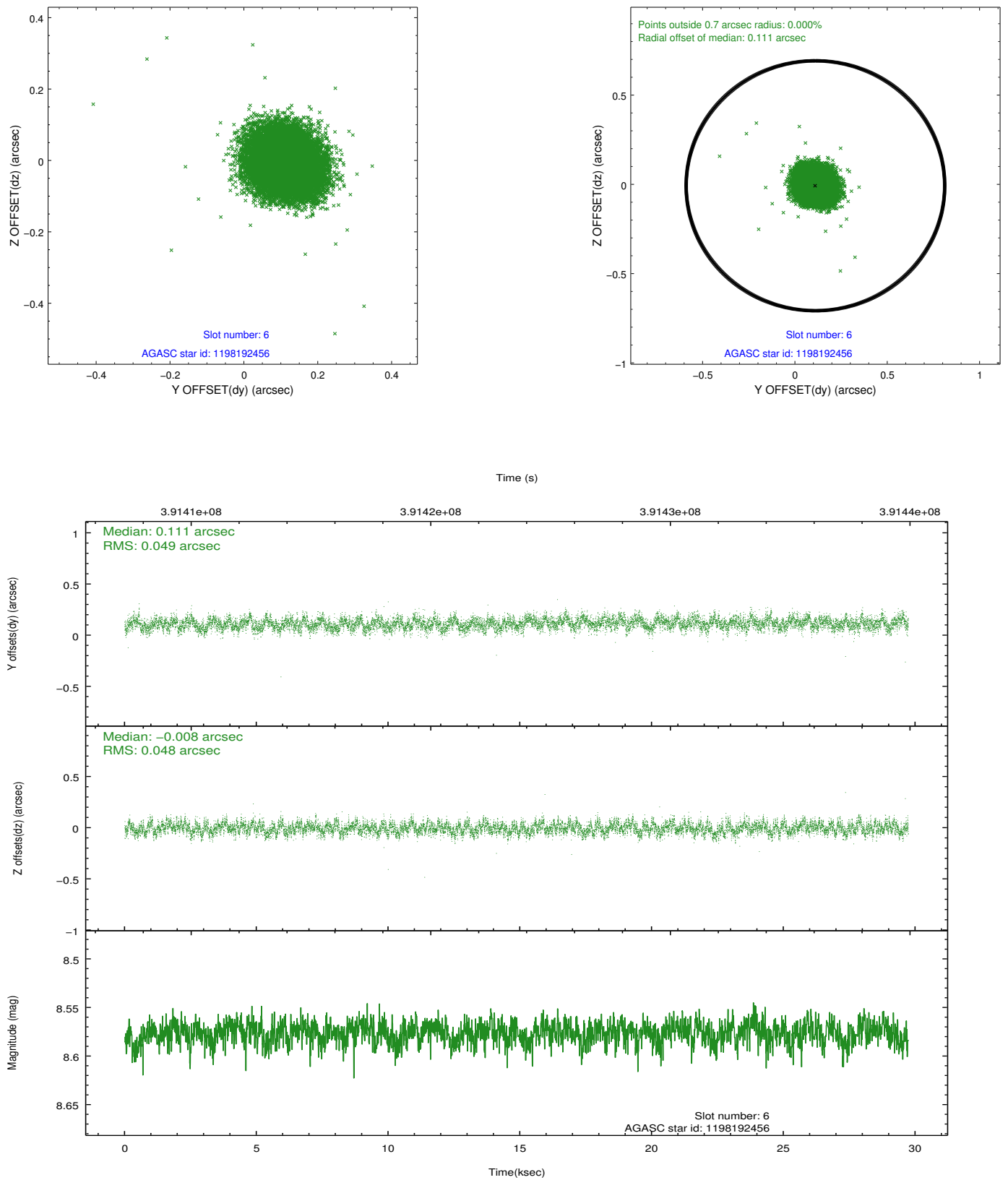
## 2.4.2 Slot 4



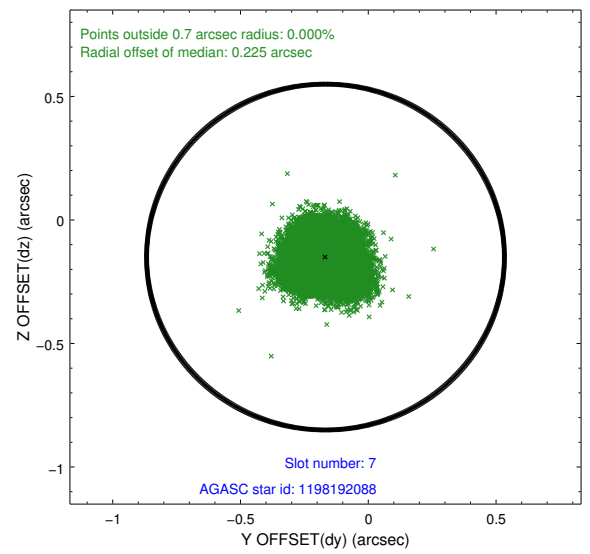
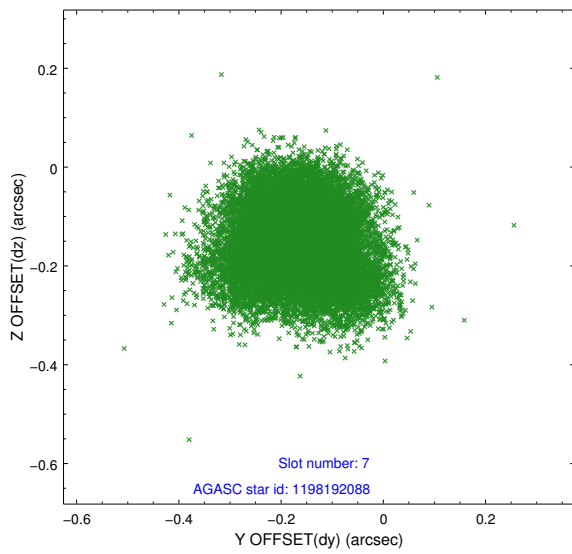
### 2.4.3 Slot 5



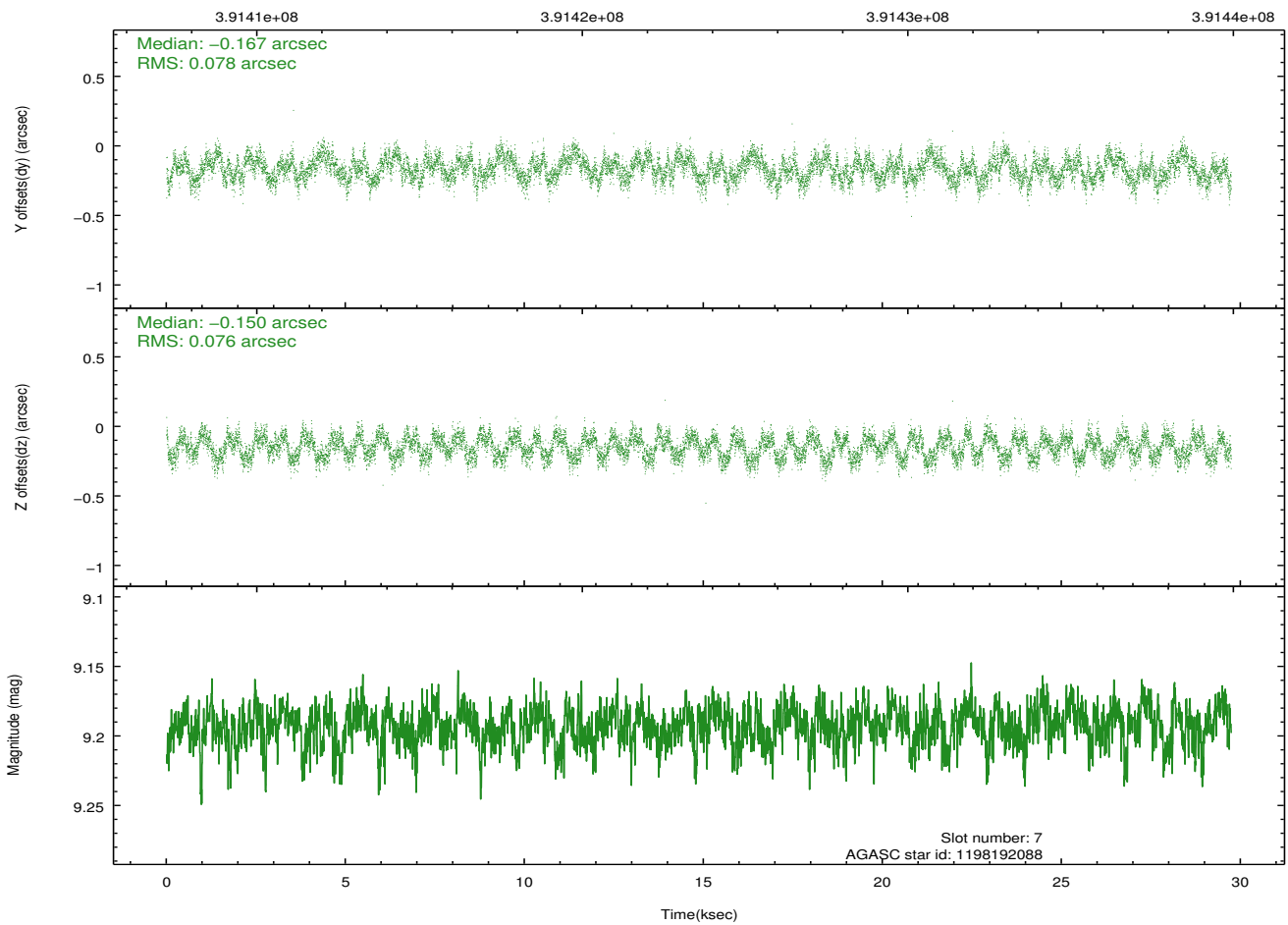
## 2.4.4 Slot 6



## 2.4.5 Slot 7

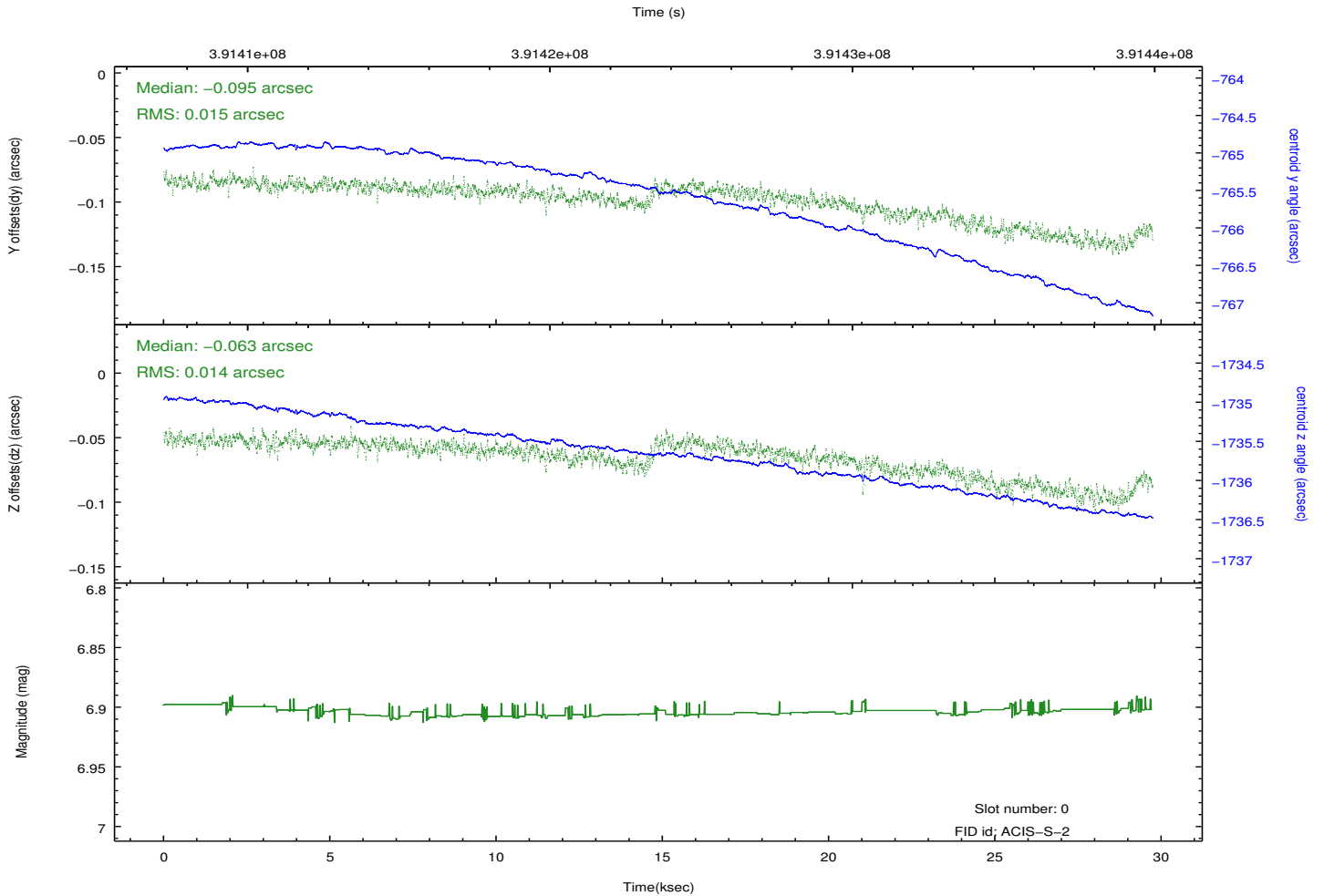
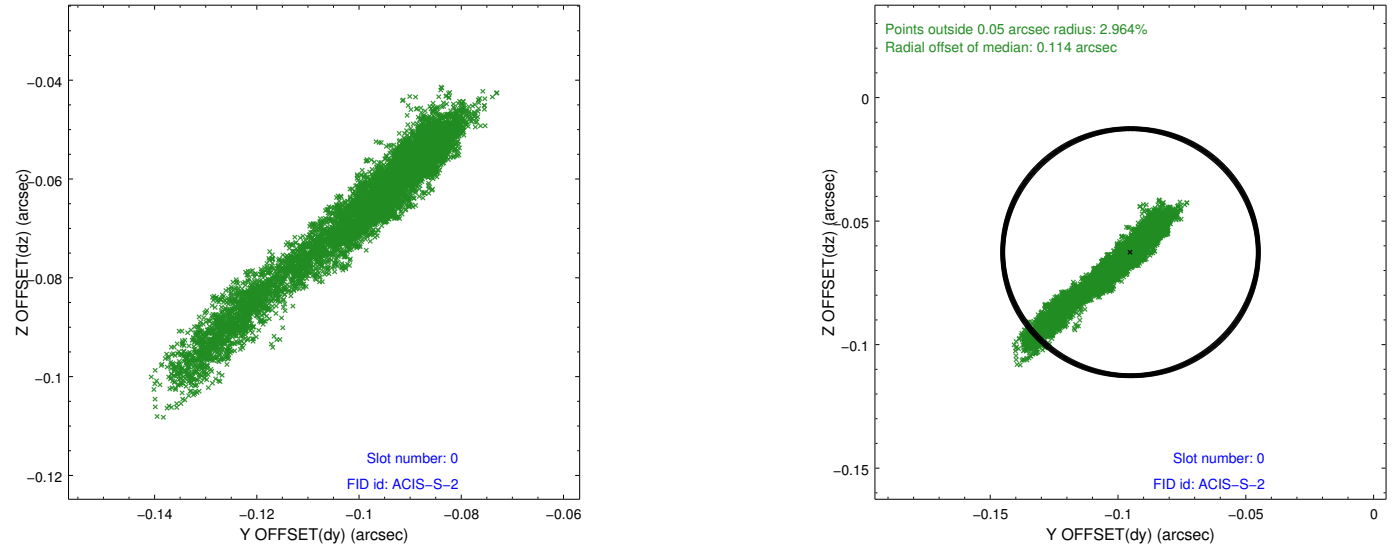


Time (s)

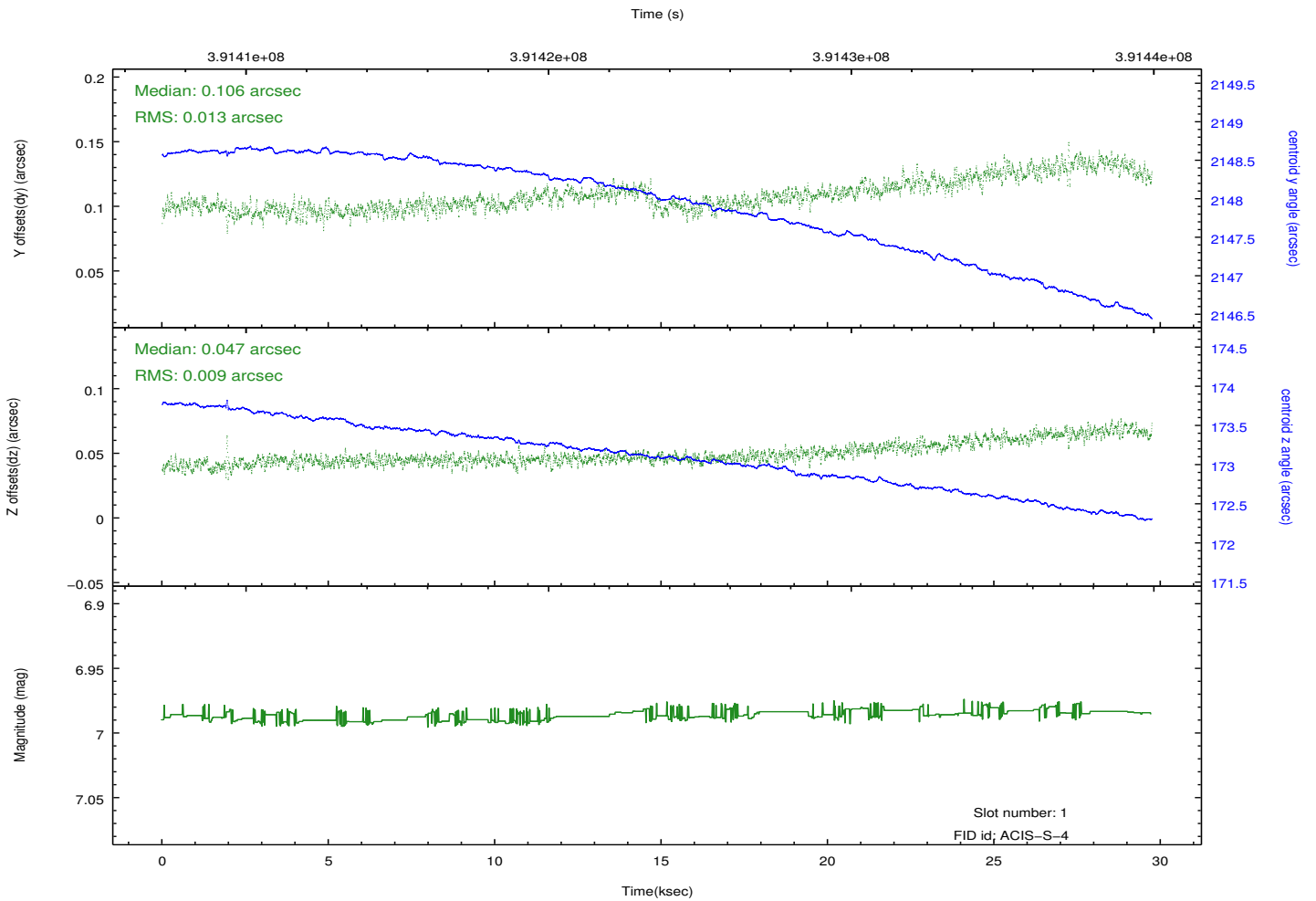
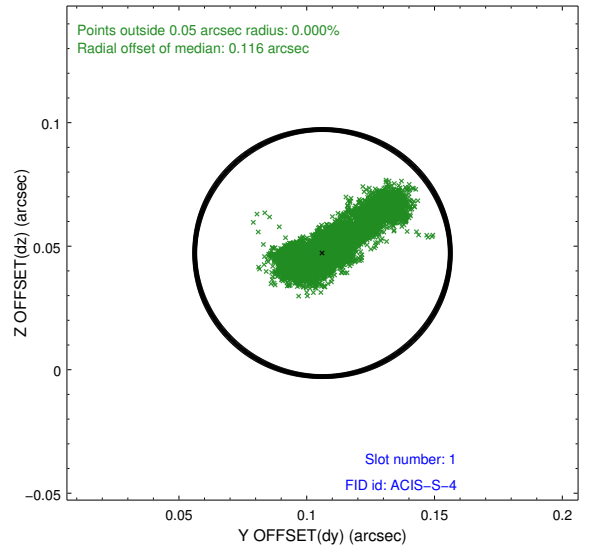
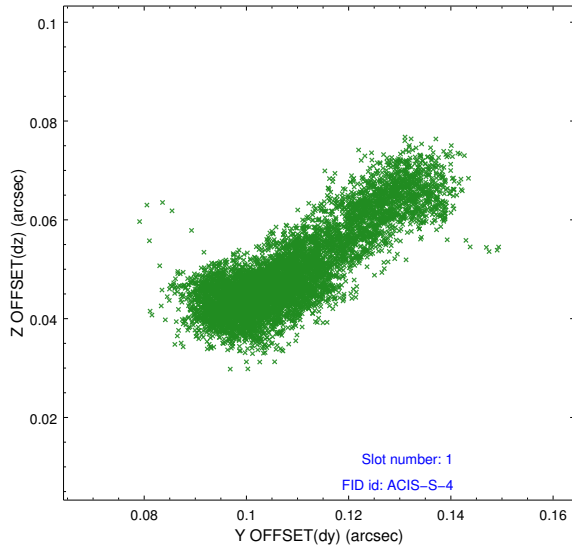


## 2.5 FID Slots

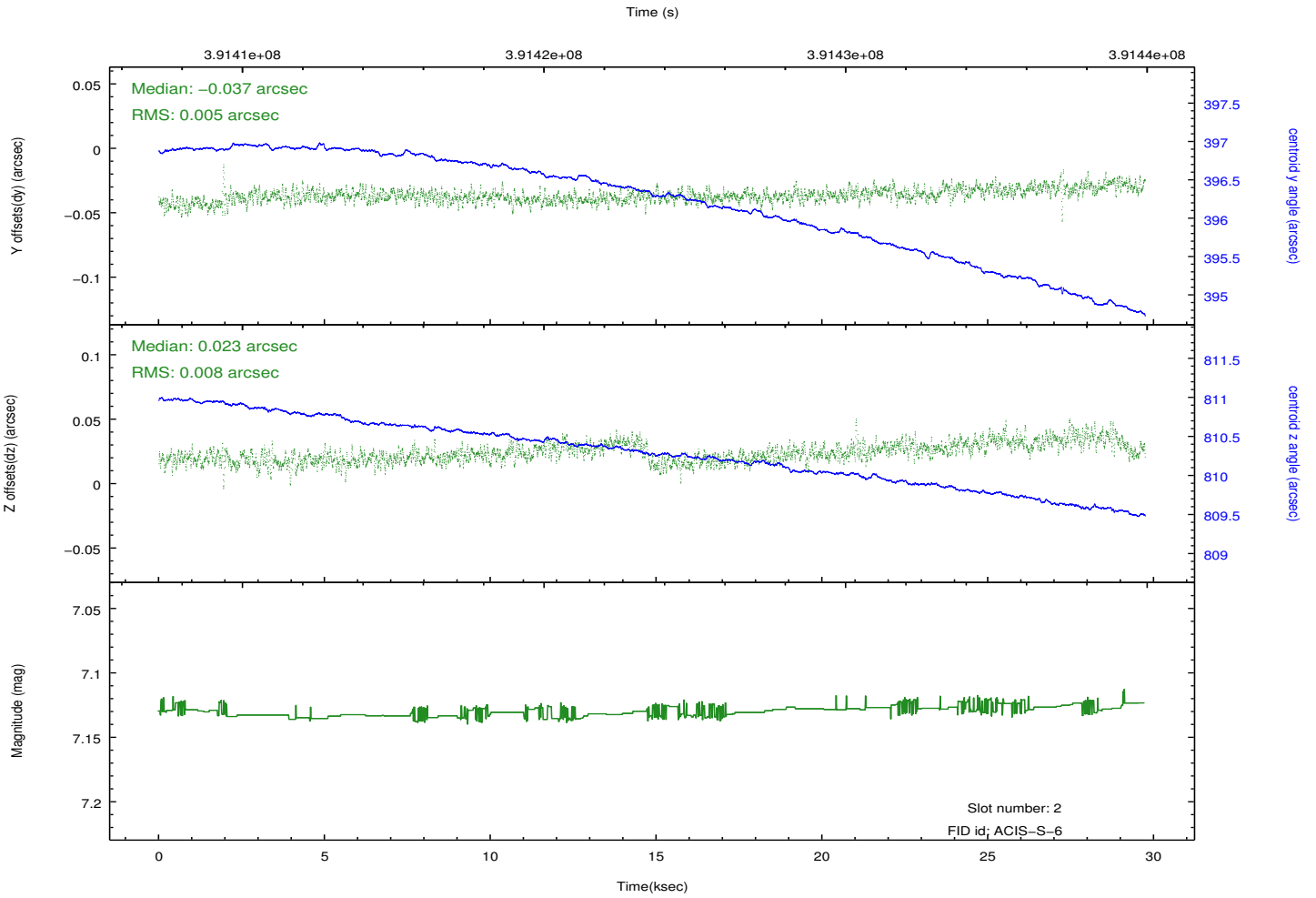
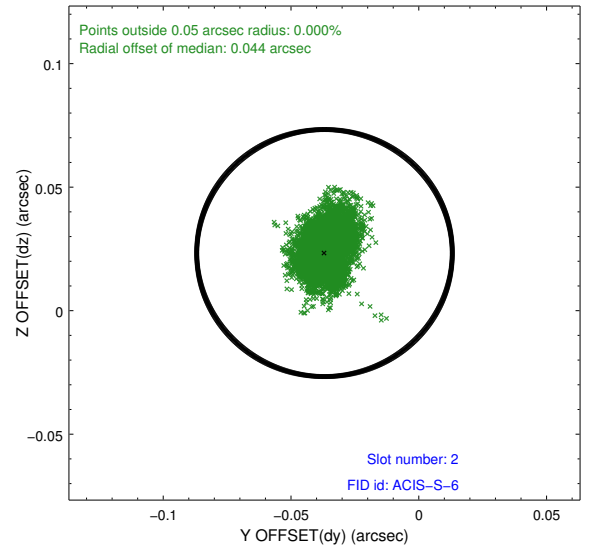
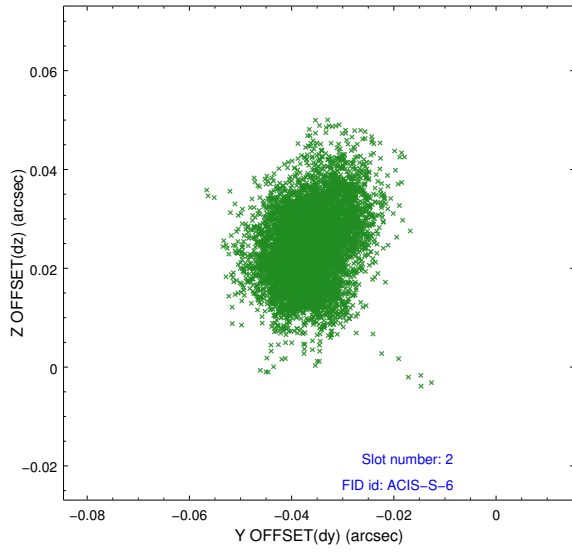
### 2.5.1 Slot 0



## 2.5.2 Slot 1



### 2.5.3 Slot 2



# A Summary

## A.1 Status

V&V Scientist	Jen Lauer
V&V Date (YYYY-MM-DD)	2012.07.03
V&V Edition	1
V&V Disposition and Status	OK
V&V Charge Time	29.050100223422

## A.2 Comments