

V&V Reference Report

L2 ASCDS Version : 8.4.5

Observation 12237 - L2 Version 2
Chandra X-Ray Center

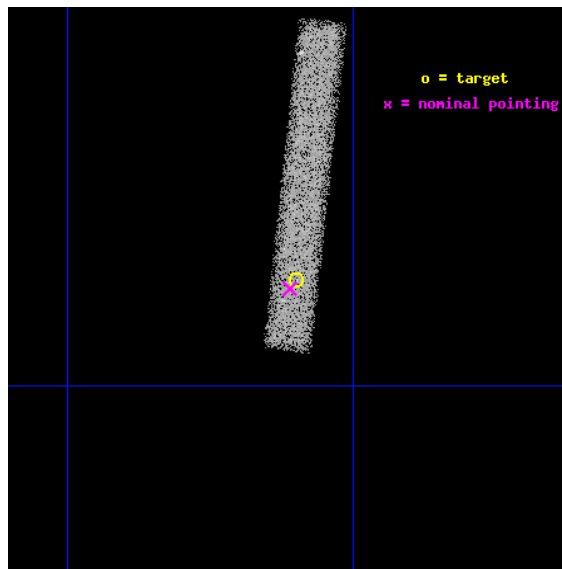
L2 Processing Date : Jul 4 2012

Contents

1	Front	2
2	OBI	3
2.1	OBI	3
2.1.1	Images	3
2.1.2	Bias	3
2.1.3	Parameters	4
2.1.4	Events	4
2.2	Compared Parameters	5
2.3	Aspect	6
2.4	Star Slots	9
2.4.1	Slot 3	9
2.4.2	Slot 4	10
2.4.3	Slot 5	11
2.4.4	Slot 6	12
2.4.5	Slot 7	13
2.5	FID Slots	14
2.5.1	Slot 0	14
2.5.2	Slot 1	15
2.5.3	Slot 2	16
A	Summary	17
A.1	Status	17
A.2	Comments	17

1 Front

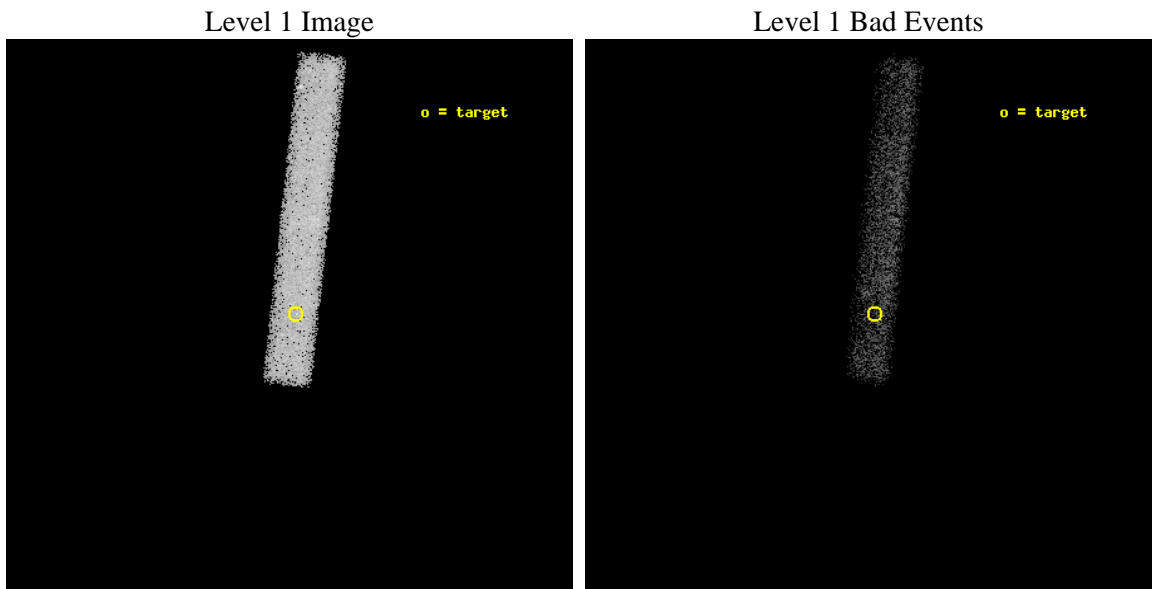
seq_num	401142	Sequence number
obs_id	12237	Observation id
title	Constraining the X-ray spectrum of a nearby unusual binary pulsar	
observer	Prof Duncan Lorimer	Principal investigator
object	J2222-0137	Source name
dtcycle	0	
cycle	P	events from which exps? Prim/Second/Both
ra_targ	335.524875	Observer's specified target RA [deg]
dec_targ	-1.621033	Observer's specified target Dec [deg]
ra_nom	335.52786387983	Nominal RA [deg]
dec_nom	-1.6248505578804	Nominal Dec [deg]
roll_nom	276.1985096859	Nominal Roll [deg]
revision	2	Processing version of data
ontime	30009.056879163	Sum of GTIs [s]
livetime	27216.630581501	Livetime [s]
ontime7	30009.056879163	Sum of GTIs [s]
l2events	17216	Number of level 2 events



2 OBI

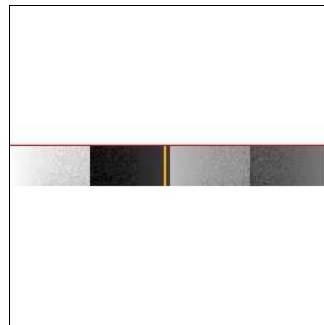
2.1 OBI

2.1.1 Images



2.1.2 Bias

Chip 7



2.1.3 Parameters

obi_num	0	Obi number	sched_exp_time	30000.000000	[s] Scheduled observation exposure time
ascdsver	8.4.5	Processing system revision	ontime	30009.056879163	Sum of GTIs [s]
caldbver	4.5.0	 	ontime7	30009.056879163	Sum of GTIs [s]
date	2012-07-04T03:10:00	Date and time of file creation	l1events	35671	Number of level 1 events
revision	2	Processing version of data			

2.1.4 Events

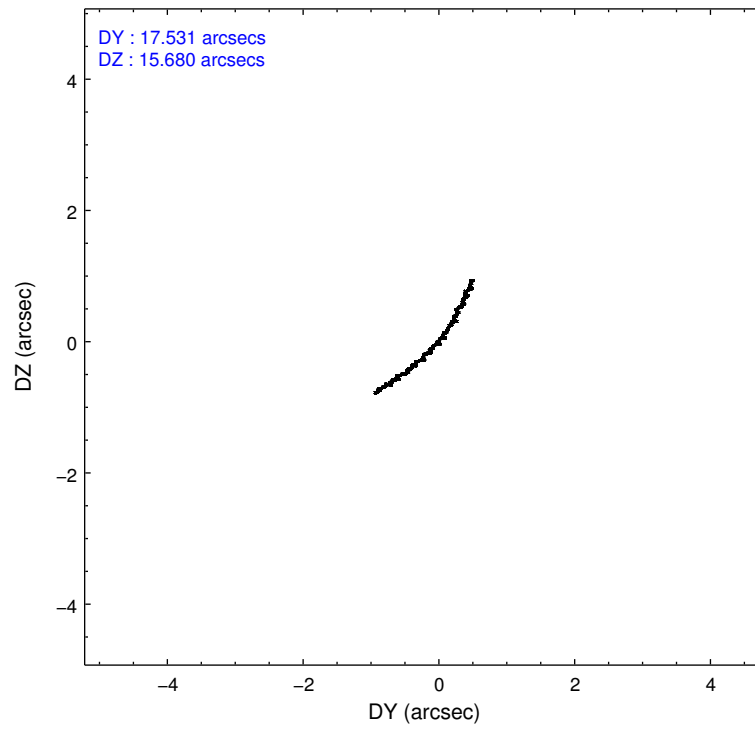
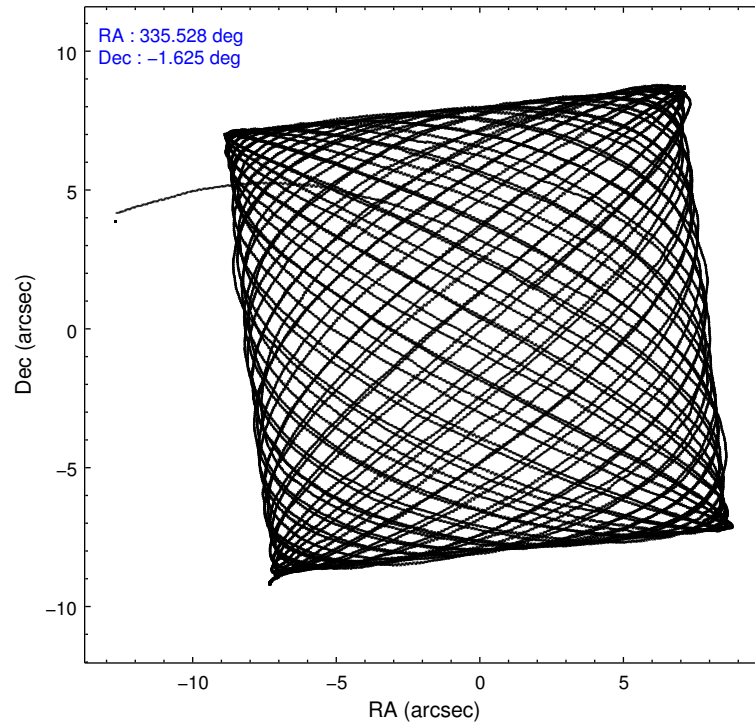
	ccd 7
level 1 events	35671
rejected events	17630
rejected %	49%

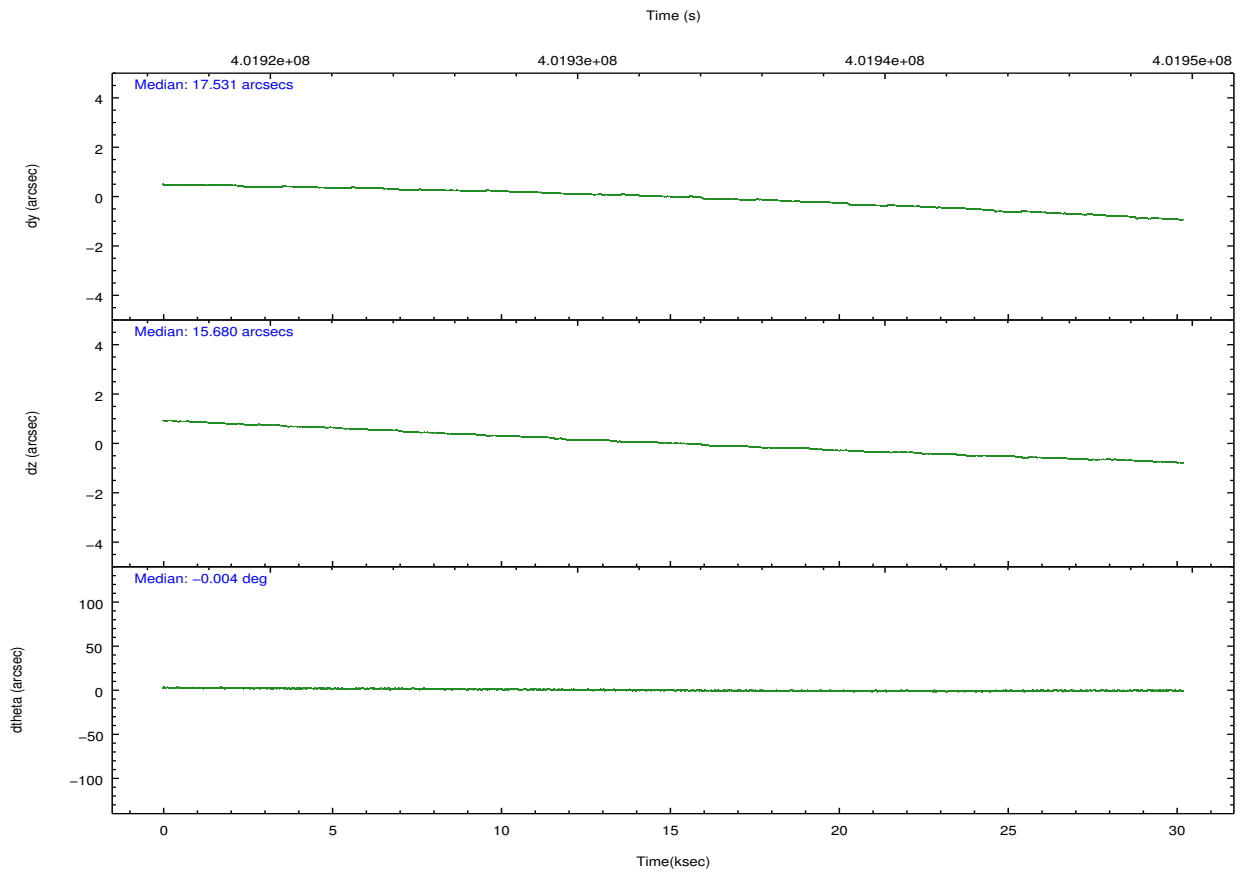
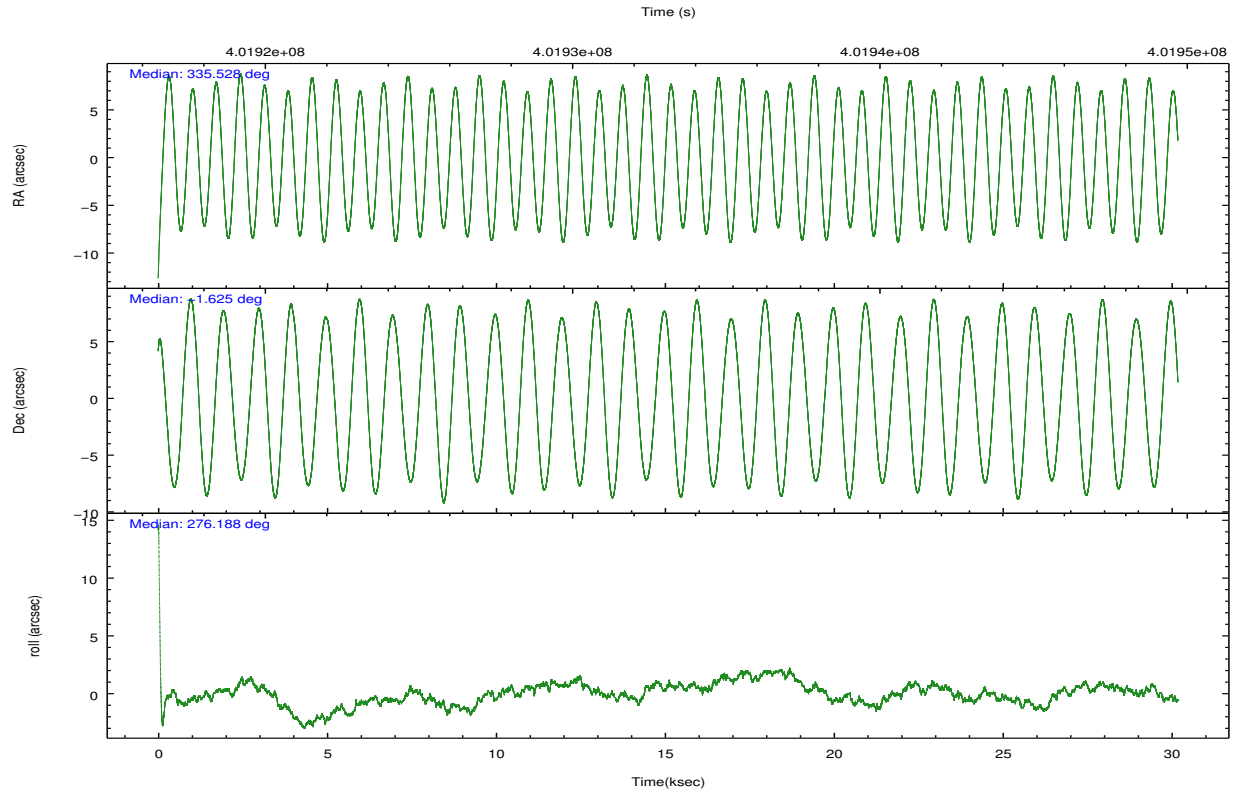
	ccd 7
grade 0 events	1838
	5%
grade 1 events	45
	0%
grade 2 events	3568
	10%
grade 3 events	2467
	6%
grade 4 events	2404
	6%
grade 5 events	3715
	10%
grade 6 events	7766
	21%
grade 7 events	13868
	38%

2.2 Compared Parameters

Parameter	Planned	Actual	Parameter	Planned	Actual
Instrument	ACIS	ACIS	Obspar format version number	7	7
Detector	ACIS-7	ACIS-7	Obspar file type	PREDICTED	ACTUAL
Grating	NONE	NONE	Obspar update status	NONE	UPDATED
Data mode	VFAINT	VFAINT	Number of optional ACIS chips dropped	0	0
Observation mode	POINTING	POINTING	On-chip summing requested	N	N
[deg] Pointing RA	335.511399	335.5278638798272	Subarray requested	CUSTOM	1/8
[deg] Pointing Dec	-1.603017	-1.624850557880383	Subarray start row	449	449
[deg] Pointing Roll	276.041412	276.1985096859022	Subarray row count	128	128
[mm] SIM focus pos	-0.684267	-0.6828225247311905	Alternating exposures requested	N	N
[mm] SIM defocus	0	0.001444936568705701	[s] Primary exposure time	0.000000	0.4
[mm] SIM translation stage pos	-190.132523	-190.1400660498719			
[mm] SIM translation stage offset	0	0.00754346686406393			
[s] Observation start time (MET)	401918187.184000	401917427.73207			
Observation start date	2010-09-26T19:55:21	2010-09-26T19:43:47			
[s] Observation end time (MET)	401948187.184000	401949608.63372			
Observation end date	2010-09-27T04:15:21	2010-09-27T04:40:08			
Read mode	TIMED	TIMED			

2.3 Aspect



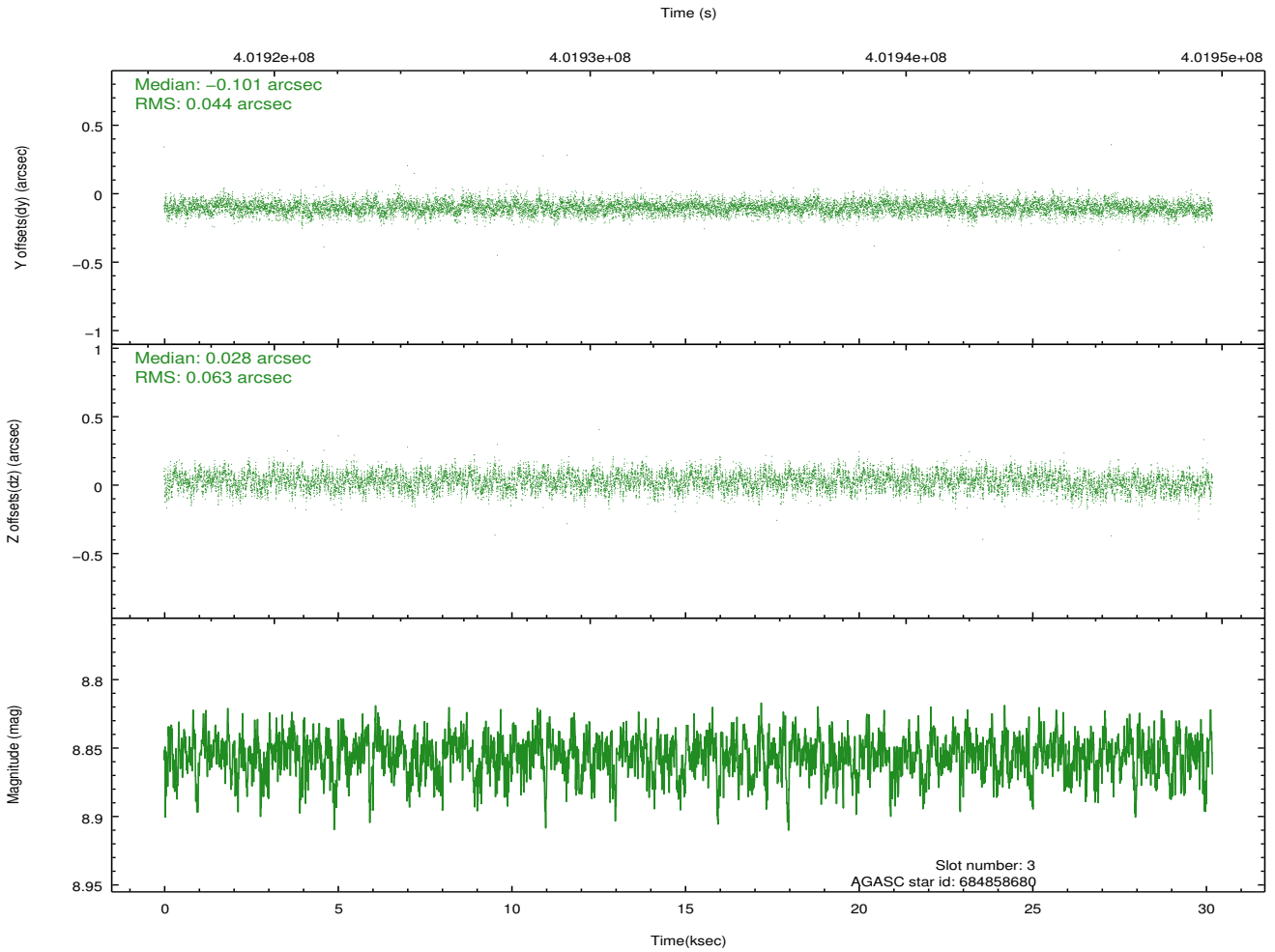
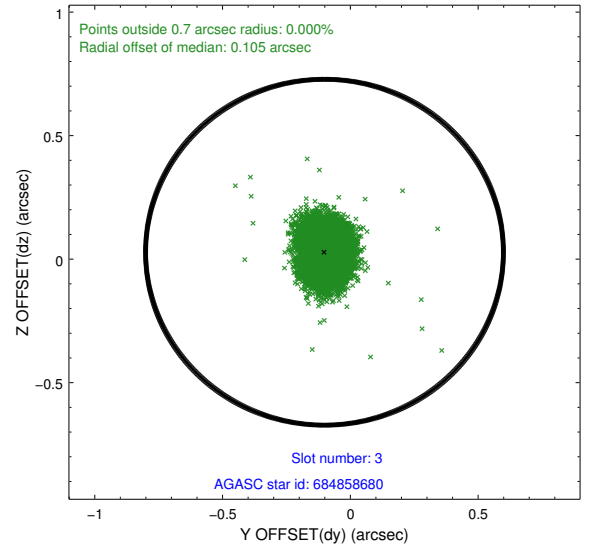
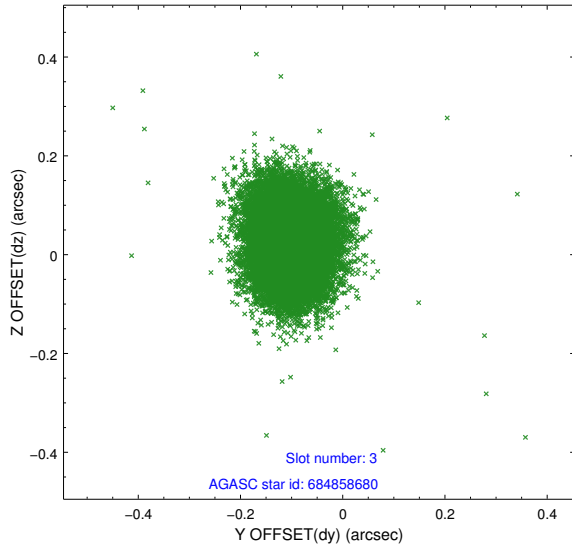


Slot Statistics

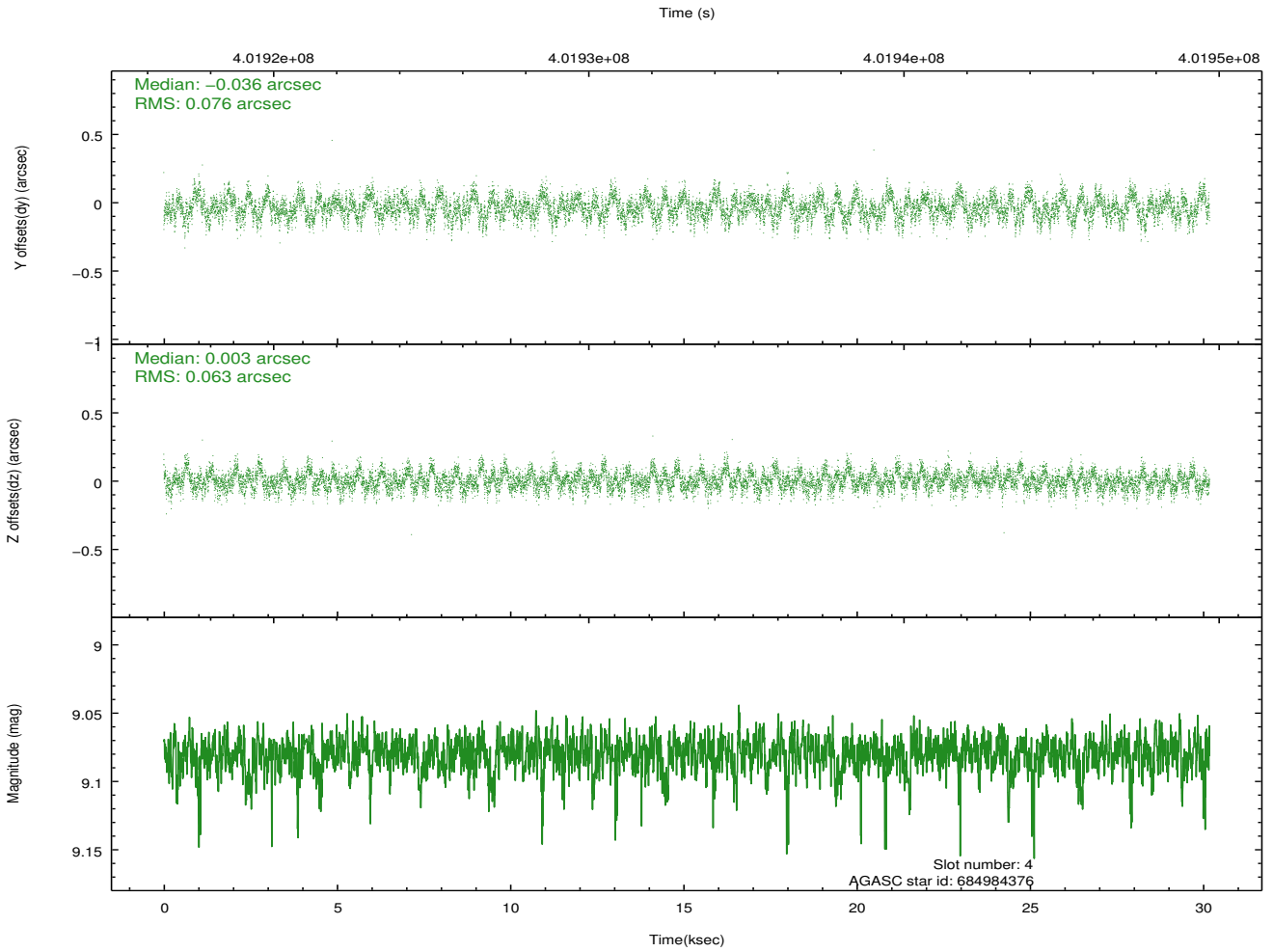
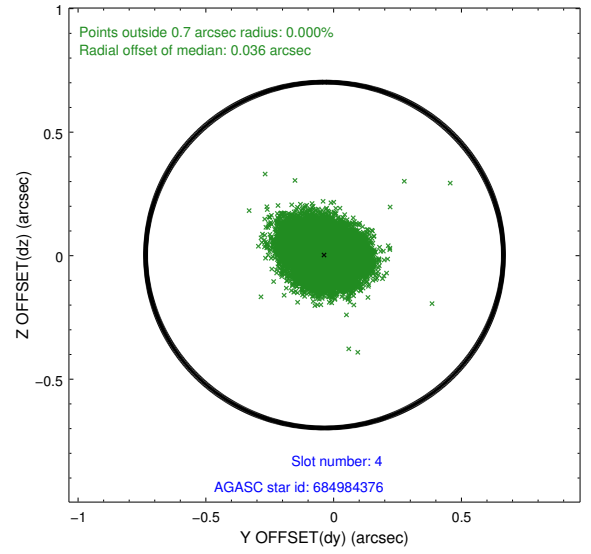
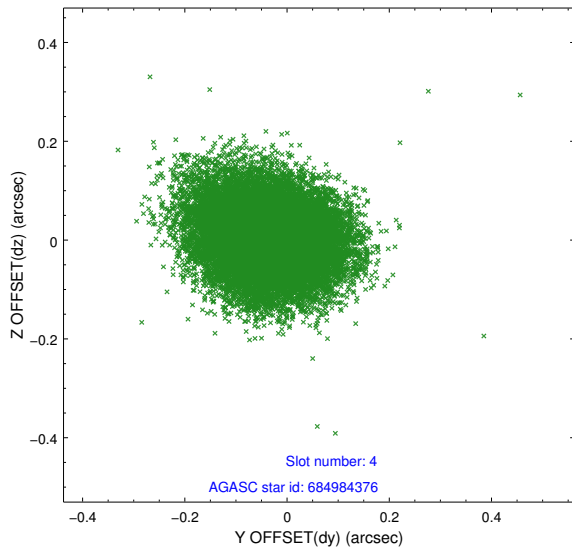
slot	status	id	mag	n_pts	med_dy	med_dz	dr1	dr2	ra	dec	mean_y	mean_z
0	FID	ACIS-S-2	6.87	7363	-0.089	-0.007	0.013	0.022	0.000000	0.000000	-770.56	-1737.12
1	FID	ACIS-S-4	6.95	7363	0.195	0.044	0.015	0.024	0.000000	0.000000	2142.96	171.36
2	FID	ACIS-S-5	6.98	7363	-0.137	-0.028	0.024	0.036	0.000000	0.000000	-1823.37	165.02
3	GUIDE	684858680	8.86	14718	-0.101	0.028	0.081	0.131	334.922309	-1.807024	508.73	-2185.84
4	GUIDE	684984376	9.08	14710	-0.036	0.003	0.106	0.168	335.056310	-2.079694	1535.46	-1809.21
5	GUIDE	684984472	7.67	14721	0.011	-0.107	0.074	0.121	336.043398	-2.061939	1844.96	1729.55
6	GUIDE	684990016	8.81	14720	0.061	-0.150	0.097	0.151	336.074884	-1.446788	-346.20	2075.75
7	GUIDE	684983944	8.55	14721	0.061	0.222	0.074	0.121	335.506030	-2.277752	2413.96	-274.15

2.4 Star Slots

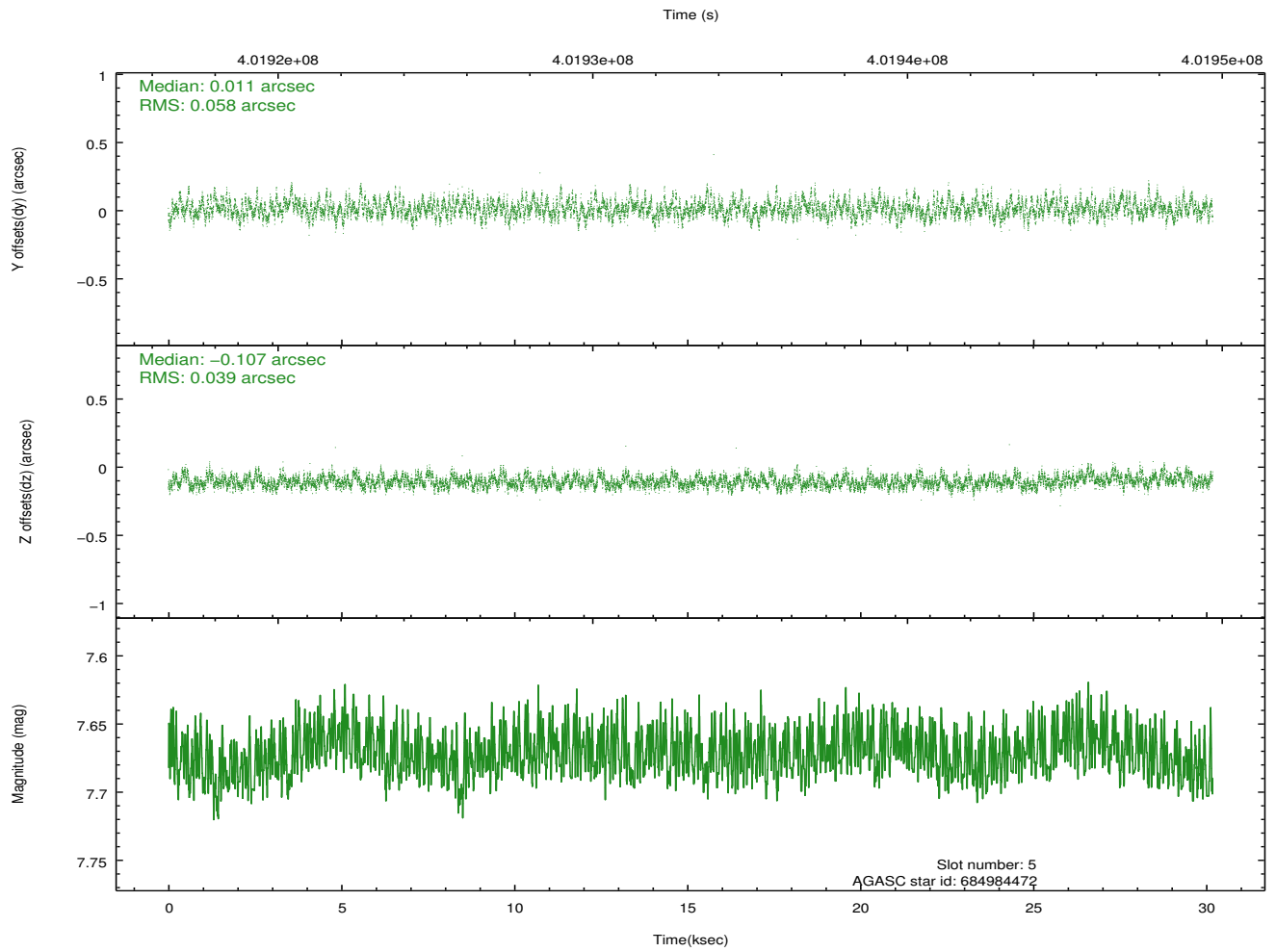
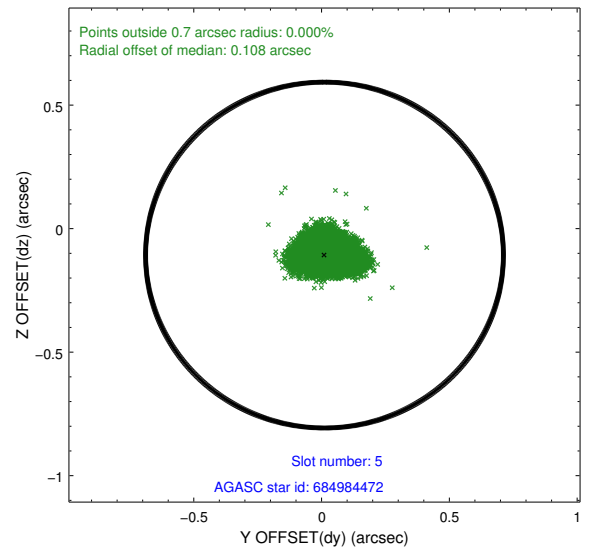
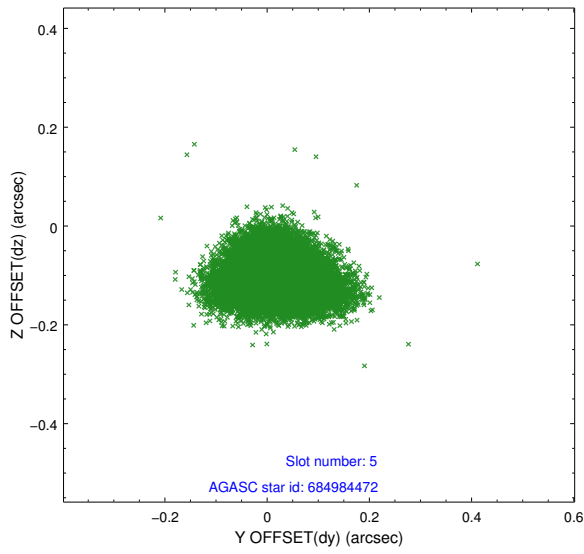
2.4.1 Slot 3



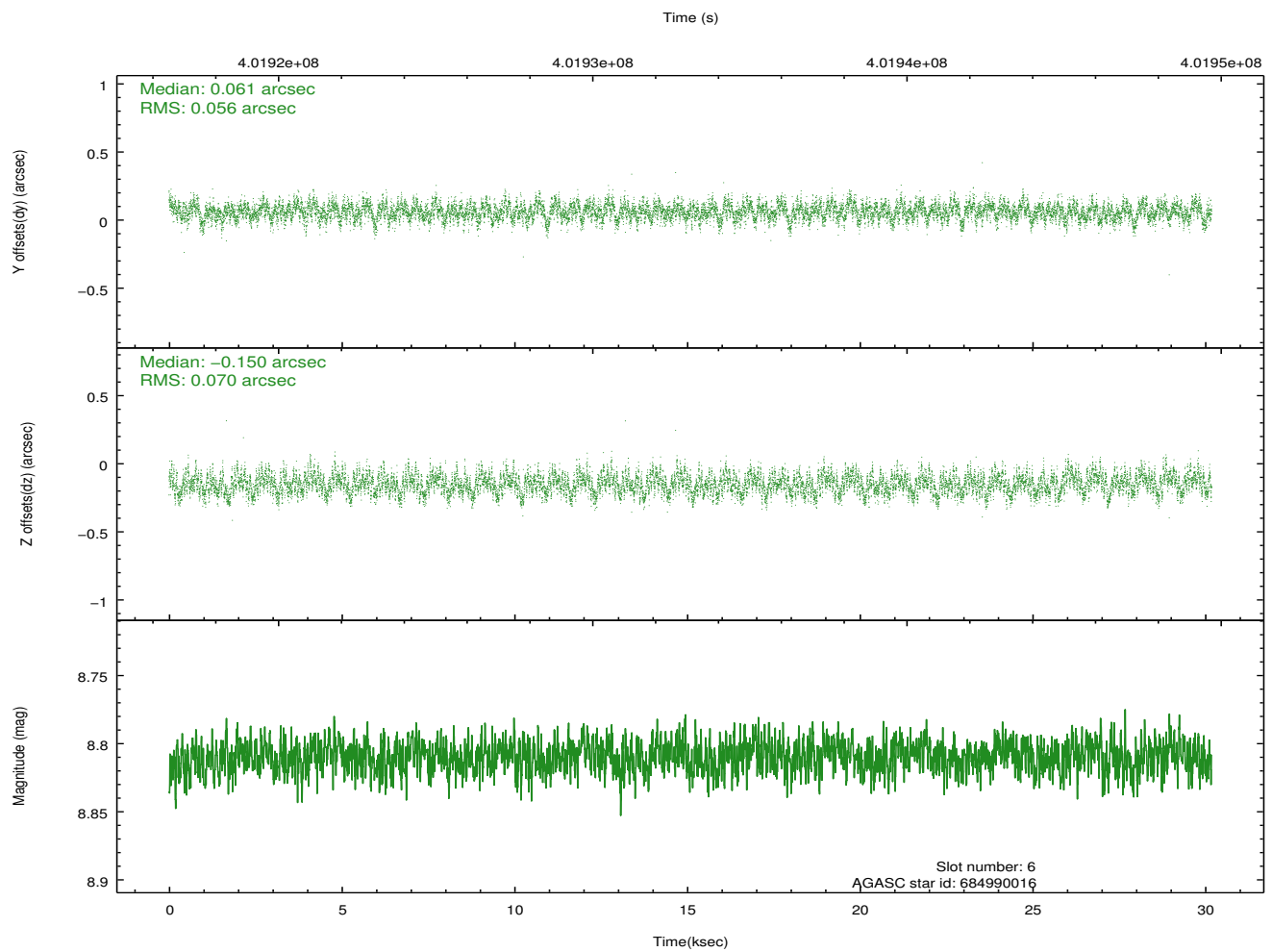
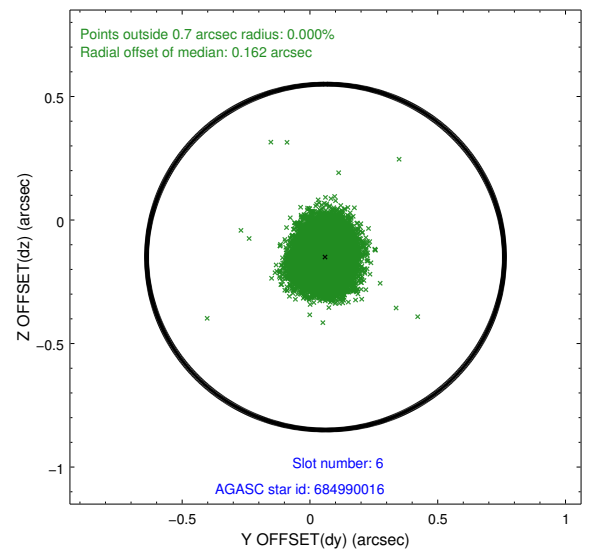
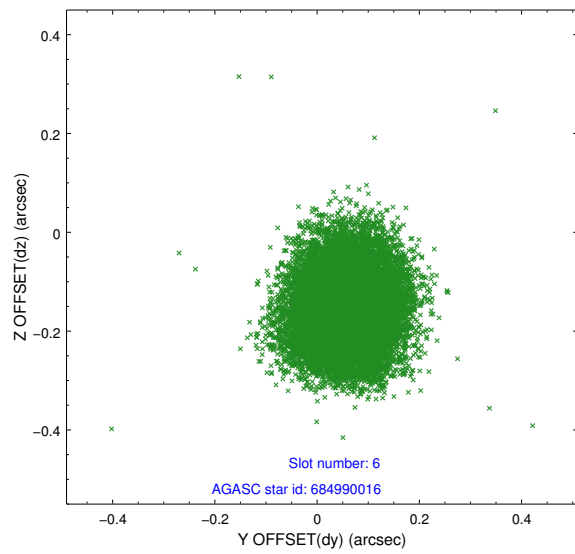
2.4.2 Slot 4



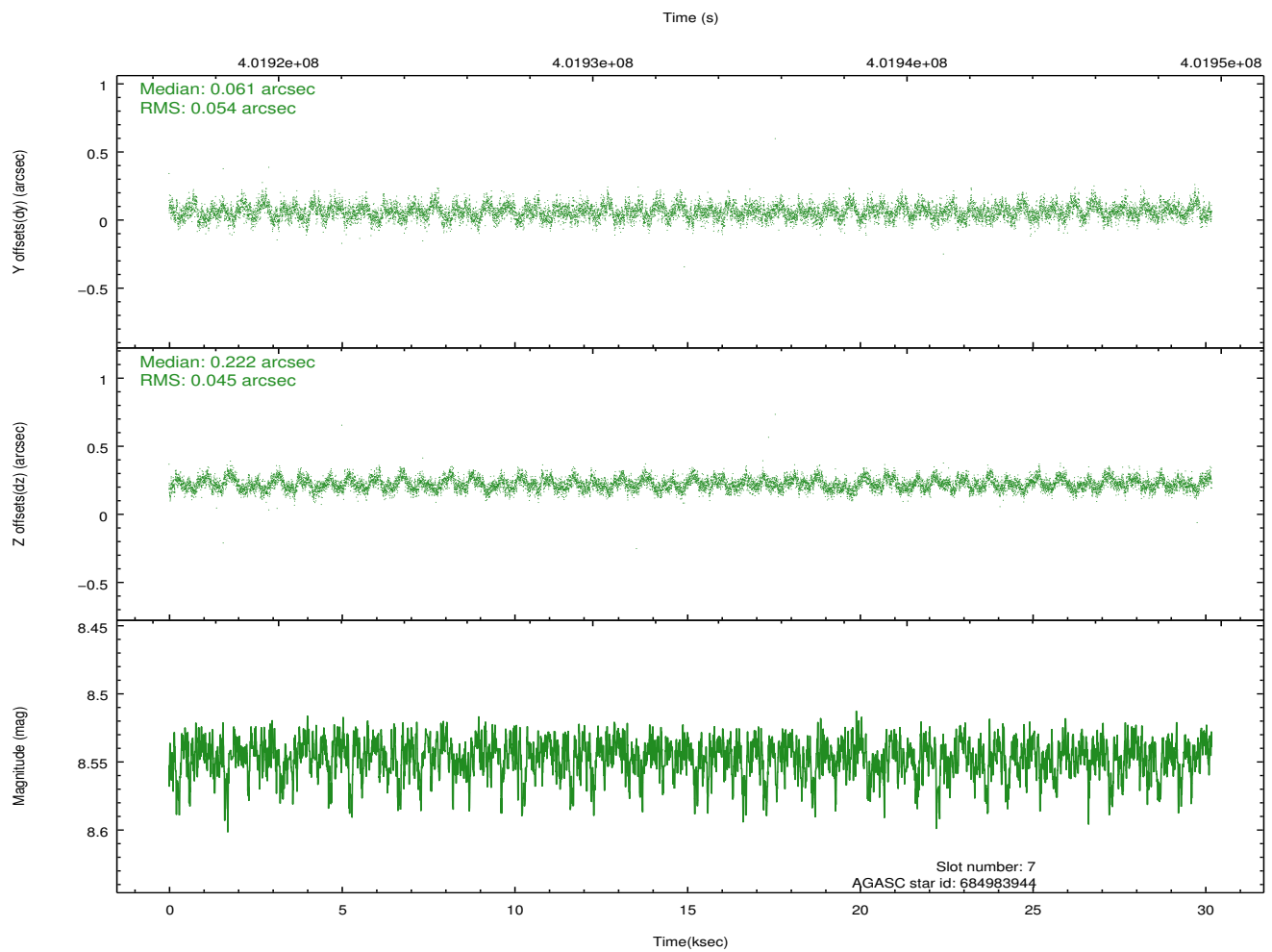
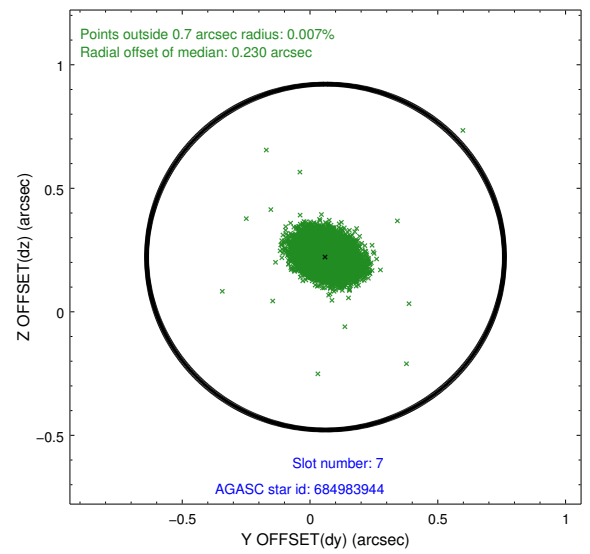
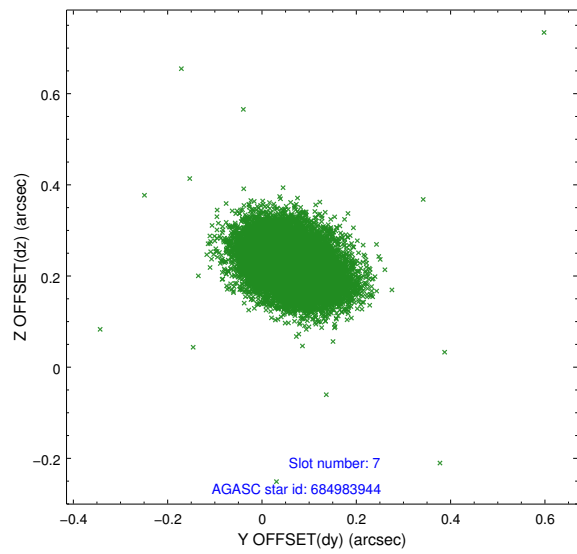
2.4.3 Slot 5



2.4.4 Slot 6

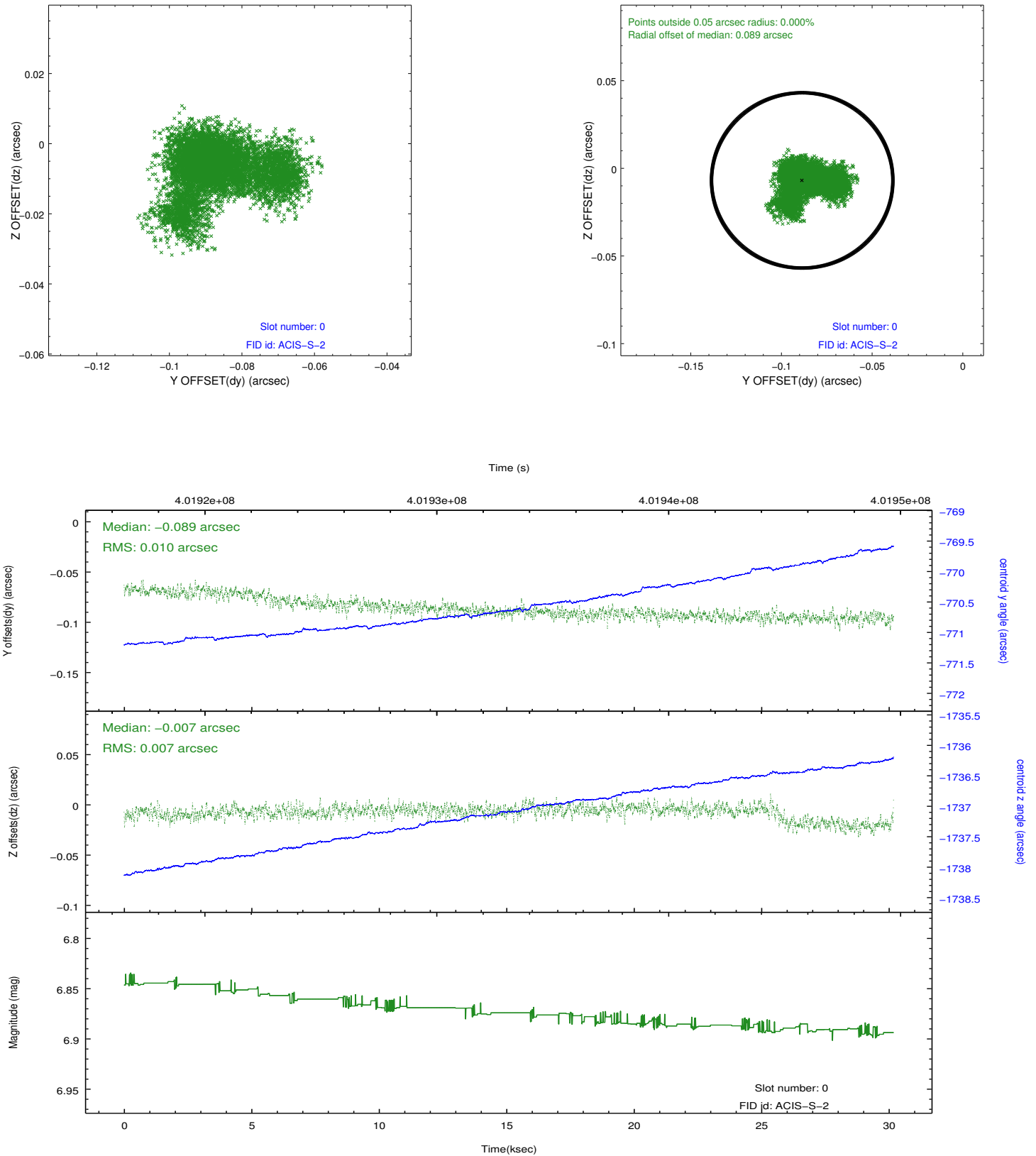


2.4.5 Slot 7

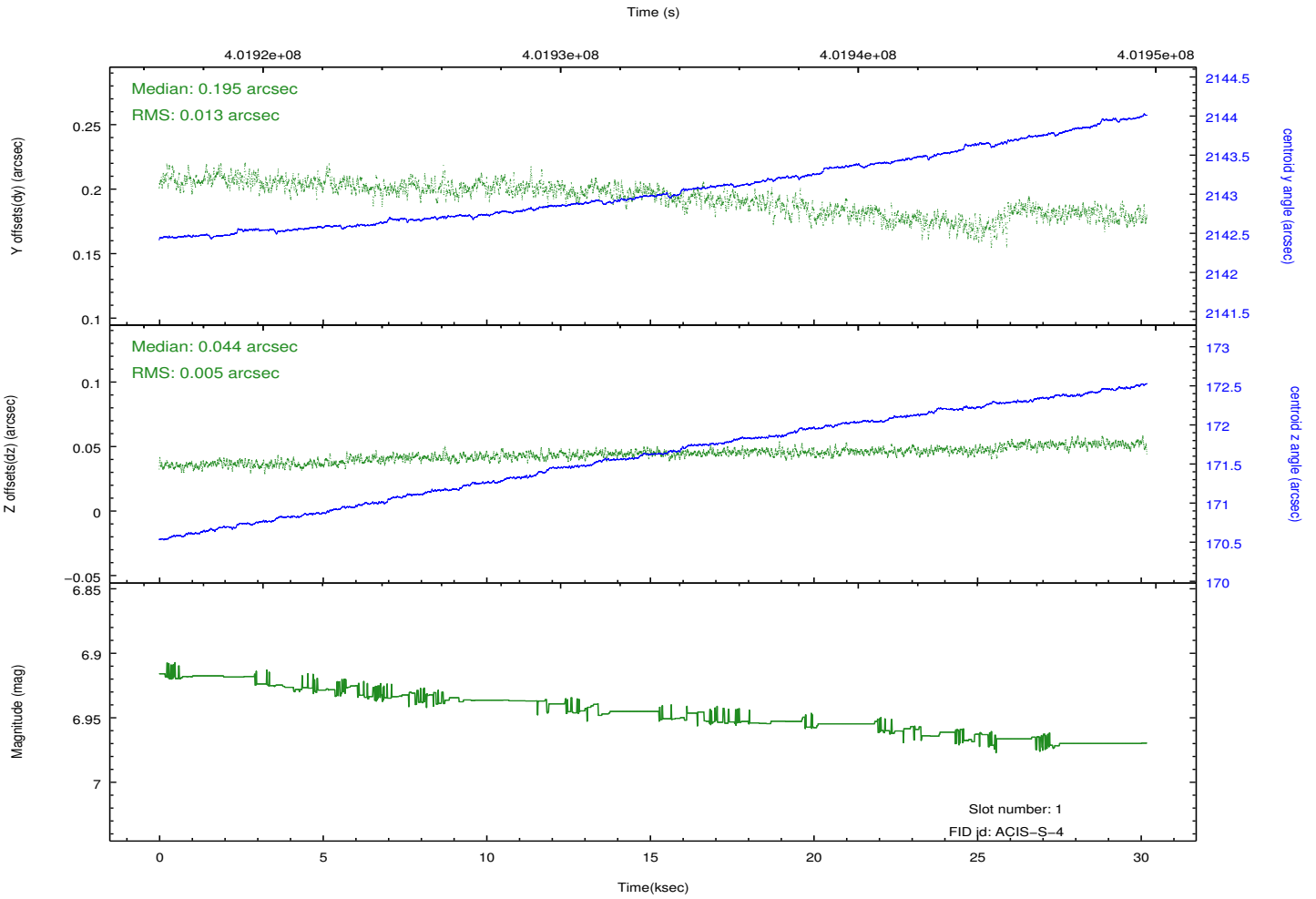
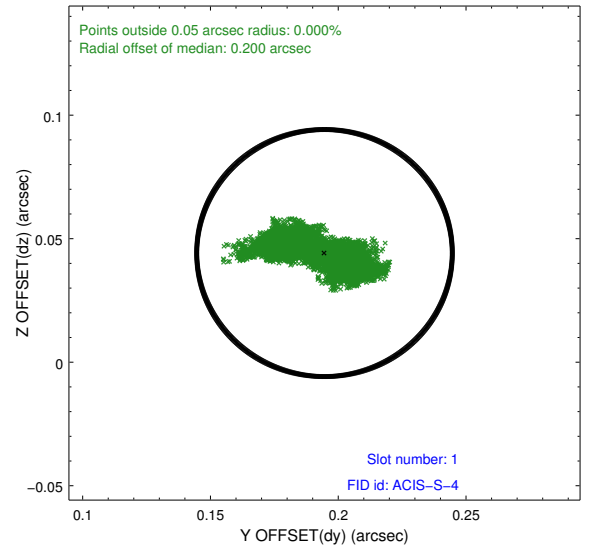
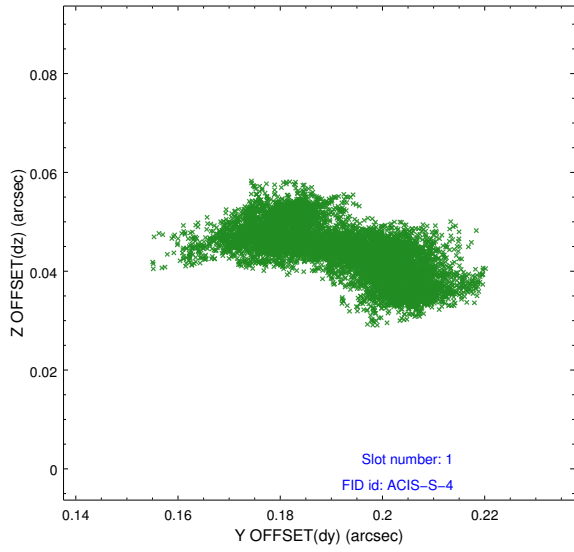


2.5 FID Slots

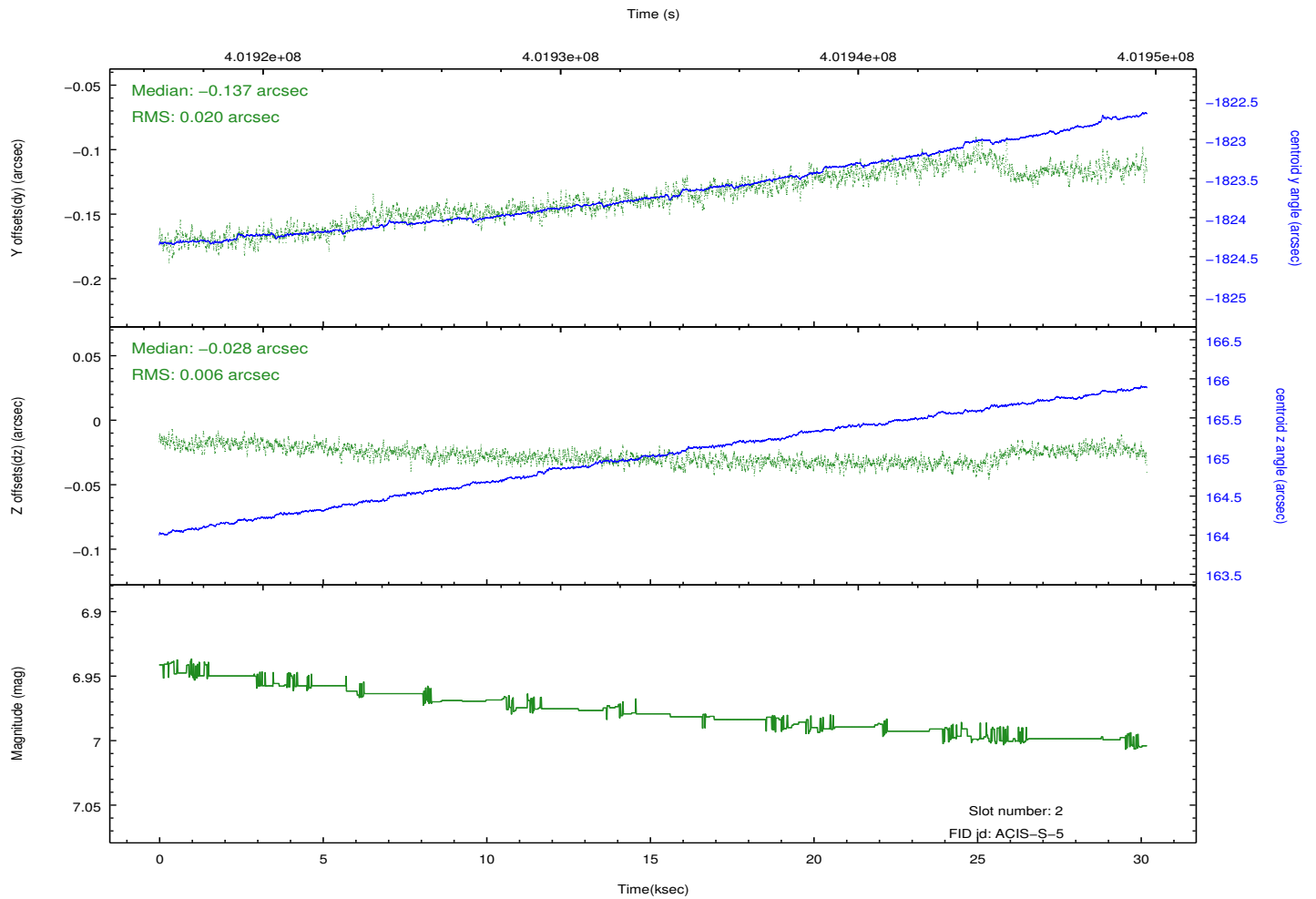
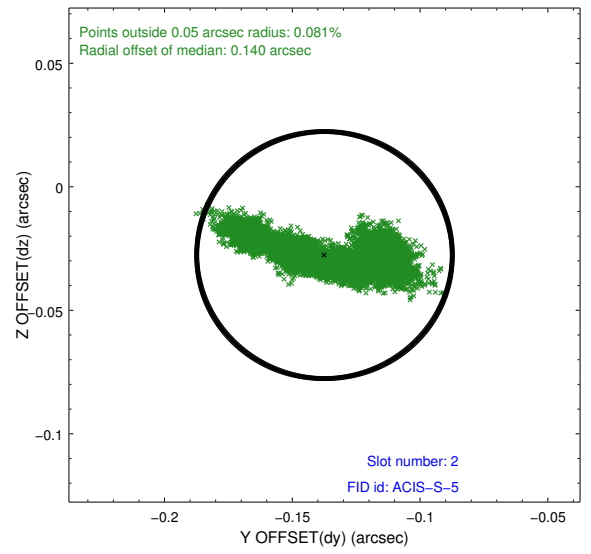
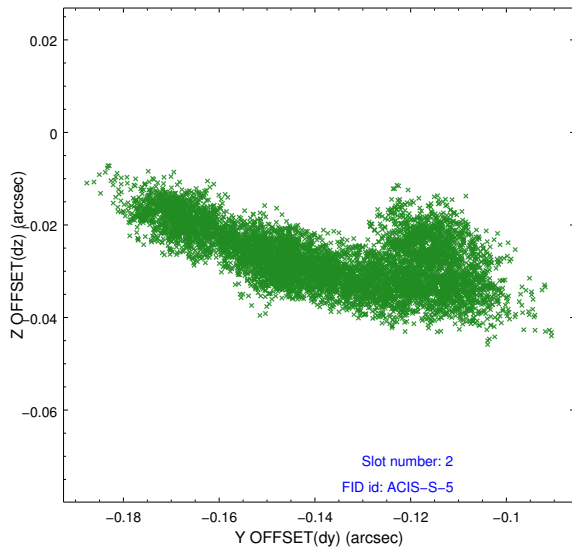
2.5.1 Slot 0



2.5.2 Slot 1



2.5.3 Slot 2



A Summary

A.1 Status

V&V Scientist	Beth Sundheim
V&V Date (YYYY-MM-DD)	2012.07.12
V&V Edition	1
V&V Disposition and Status	OK
V&V Charge Time	30.009056876898

A.2 Comments