

V&V Reference Report

L2 ASCDS Version : 8.4.3

Observation 12367 - L2 Version 1
Chandra X-Ray Center

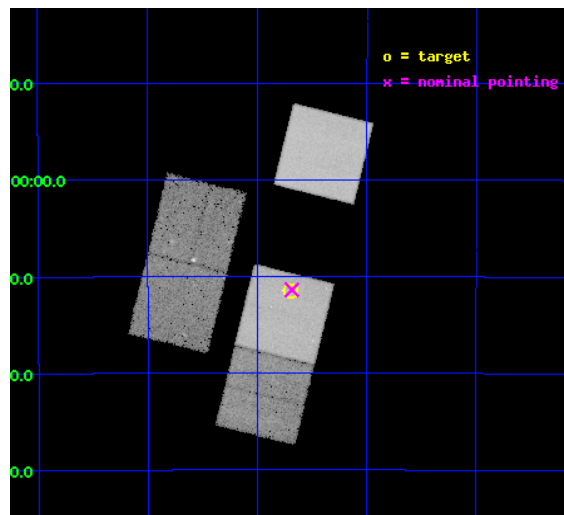
L2 Processing Date : Jan 31 2012

Contents

1	Front	2
2	OBI	3
2.1	OBI	3
2.1.1	Images	3
2.1.2	Bias	3
2.1.3	Parameters	4
2.1.4	Events	4
2.2	Compared Parameters	5
2.3	Aspect	6
2.4	Star Slots	9
2.4.1	Slot 3	9
2.4.2	Slot 4	10
2.4.3	Slot 5	11
2.4.4	Slot 6	12
2.4.5	Slot 7	13
2.5	FID Slots	14
2.5.1	Slot 0	14
2.5.2	Slot 1	15
2.5.3	Slot 2	16
A	Summary	17
A.1	Status	17
A.2	Comments	17

1 Front

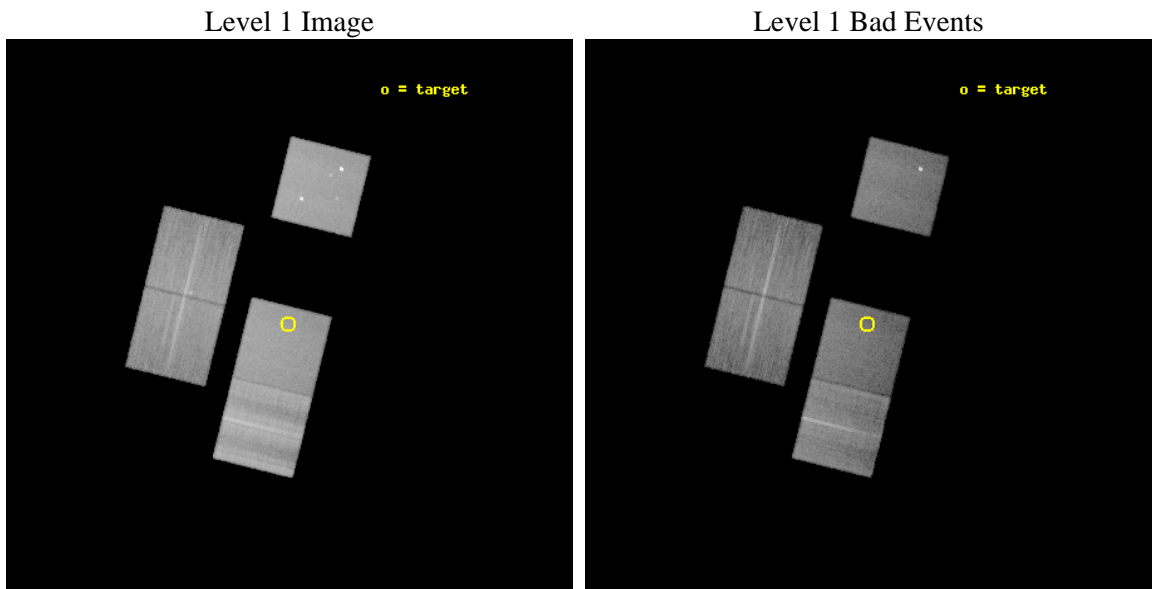
seq_num	200701	Sequence number
obs_id	12367	Observation id
title	X-rays from Planetary Nebulae: Unveiling Binarity, Magnetic Fields, and Wind Collisions	Proposal title
observer	Dr. Joel Kastner	Principal investigator
object	PN Lo 16	Source name
dtcycle	0	
cycle	P	events from which exps? Prim/Second/Both
ra_targ	263.924583	Observer's specified target RA [deg]
dec_targ	-40.190694	Observer's specified target Dec [deg]
ra_nom	263.9208332856	Nominal RA [deg]
dec_nom	-40.189742983834	Nominal Dec [deg]
roll_nom	103.82623358083	Nominal Roll [deg]
revision	1	Processing version of data
ontime	30636.032874882	Sum of GTIs [s]
livetime	30235.750551453	Livetime [s]
ontime2	30629.586754382	Sum of GTIs [s]
ontime3	30635.950794876	Sum of GTIs [s]
ontime5	30635.991834879	Sum of GTIs [s]
ontime7	30636.032874882	Sum of GTIs [s]
ontime8	30635.909754872	Sum of GTIs [s]
l2events	322696	Number of level 2 events



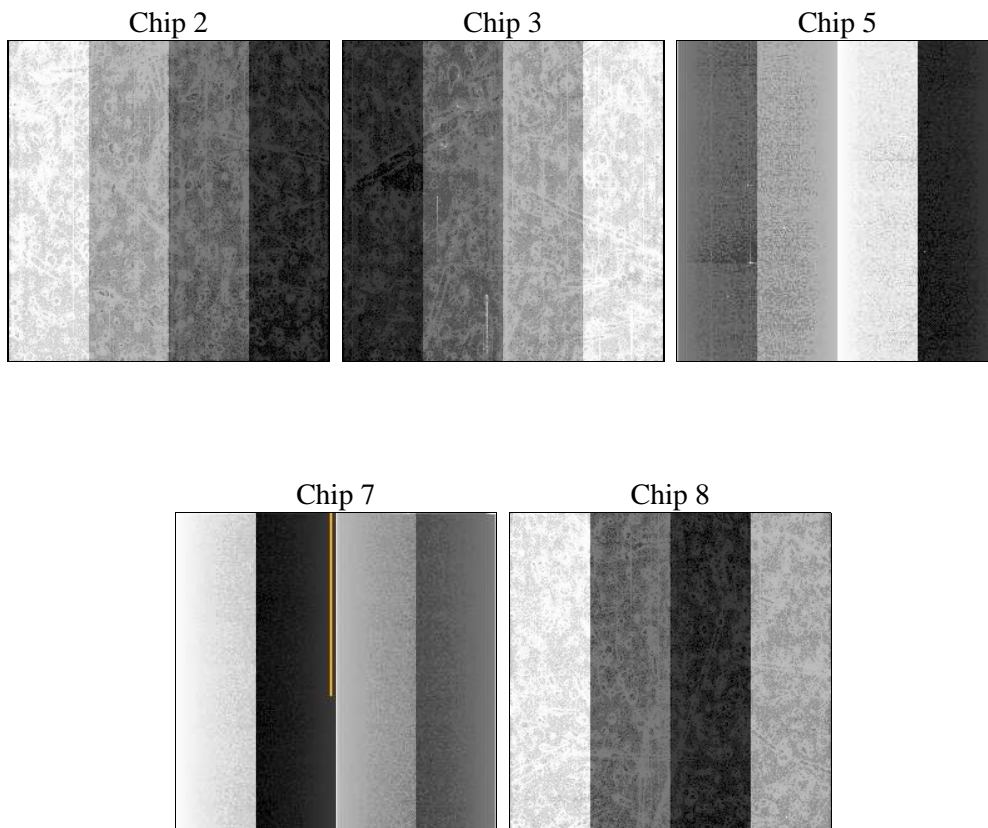
2 OBI

2.1 OBI

2.1.1 Images



2.1.2 Bias



2.1.3 Parameters

obi_num	4	Obi number	sched_exp_time	30576.000000	[s] Scheduled observation exposure time
ascdsver	8.4.3	Processing system revision	ontime	30636.032874882	Sum of GTIs [s]
caldbver	4.4.7	 	ontime2	30629.586754382	Sum of GTIs [s]
date	2012-01-31T22:44:54	Date and time of file creation	ontime3	30635.950794876	Sum of GTIs [s]
revision	1	Processing version of data	ontime5	30635.991834879	Sum of GTIs [s]
			ontime7	30636.032874882	Sum of GTIs [s]
			ontime8	30635.909754872	Sum of GTIs [s]
			l1events	1289740	Number of level 1 events

2.1.4 Events

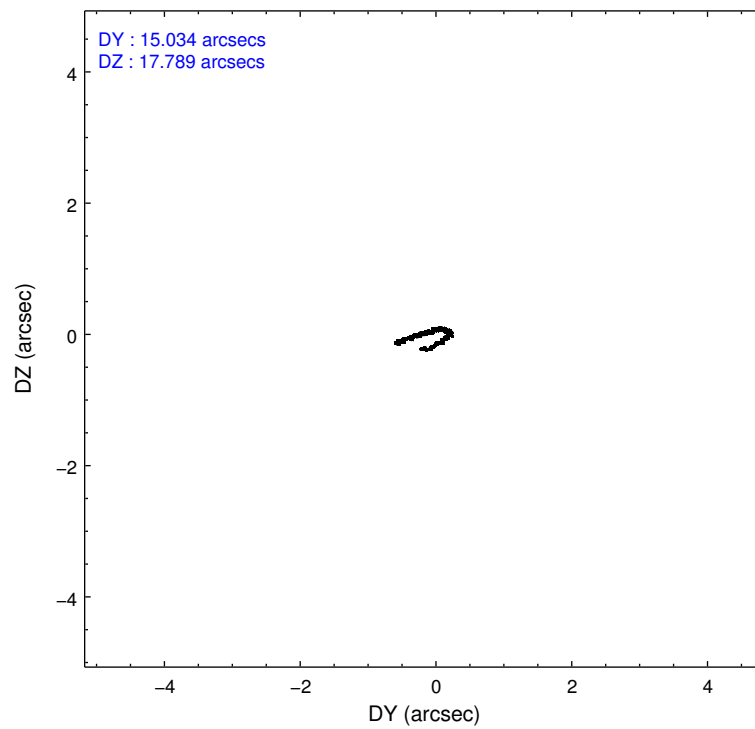
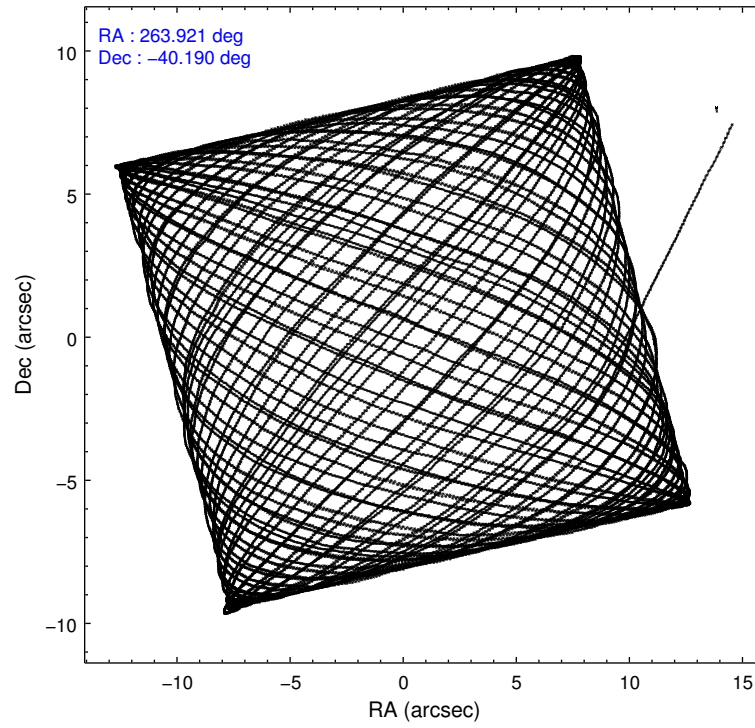
	ccd 2	ccd 3	ccd 5	ccd 7	ccd 8
level 1 events	201090	192398	314180	245962	336110
rejected events	174502	170002	155510	130820	202318
rejected %	86%	88%	49%	53%	60%

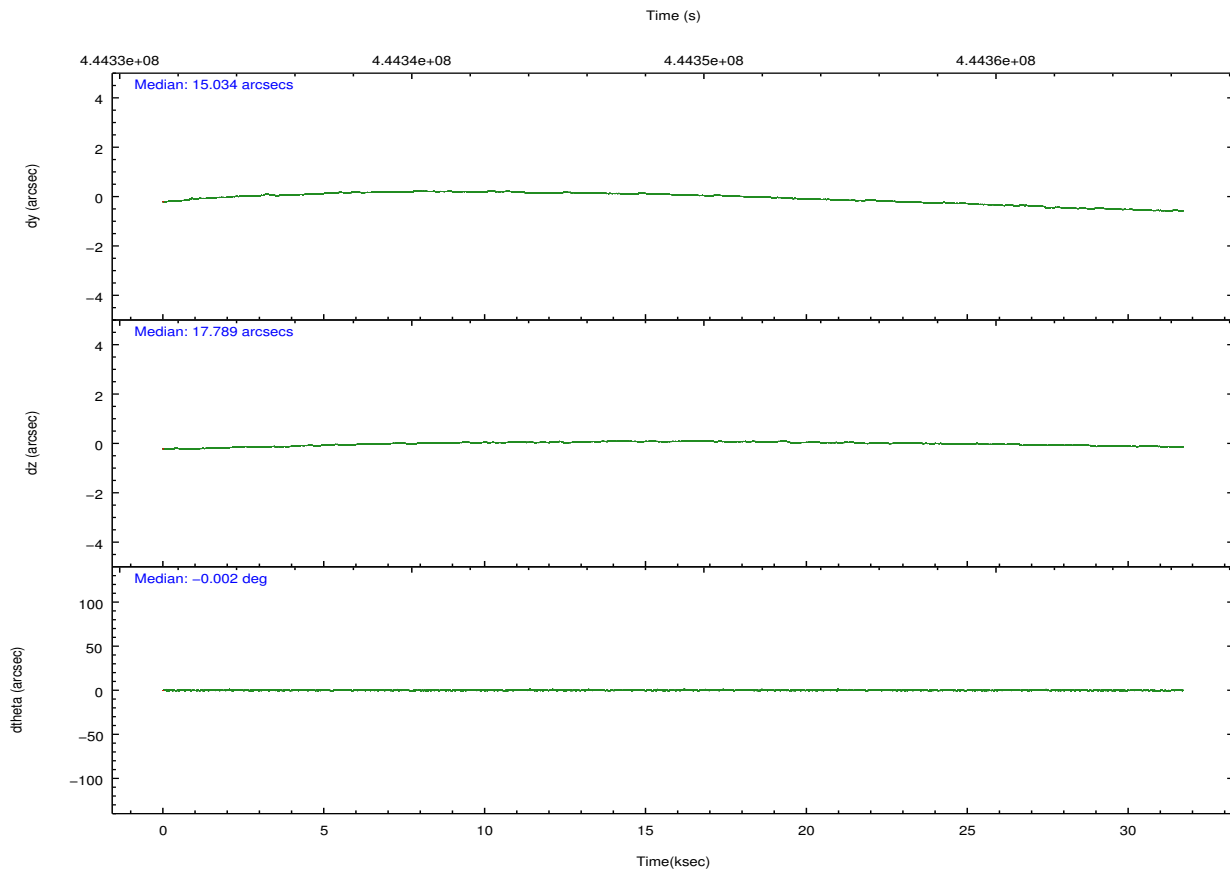
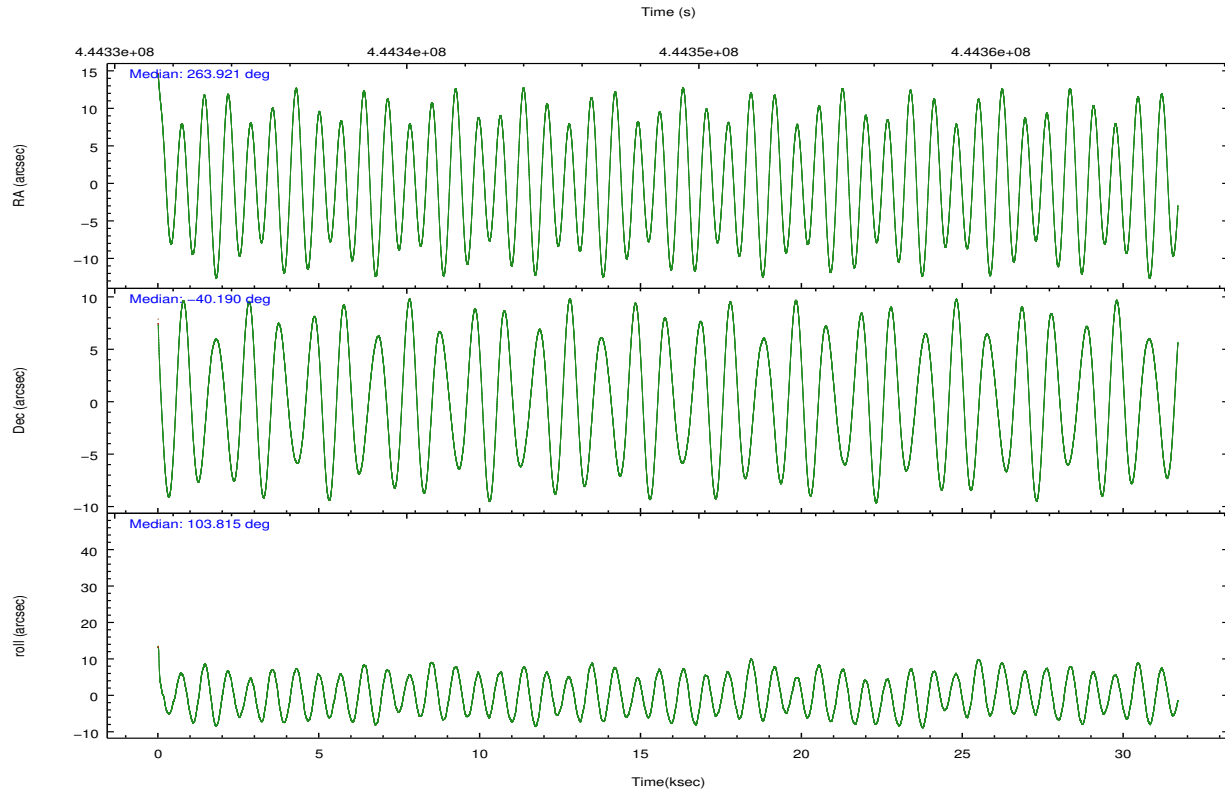
	ccd 2	ccd 3	ccd 5	ccd 7	ccd 8
grade 0 events	10971	8832	19509	11497	40252
	5%	4%	6%	4%	11%
grade 1 events	135	122	4700	325	333
	0%	0%	1%	0%	0%
grade 2 events	6412	4785	48178	24416	24868
	3%	2%	15%	9%	7%
grade 3 events	2293	2221	6633	10361	18738
	1%	1%	2%	4%	5%
grade 4 events	2538	2268	6667	10093	17120
	1%	1%	2%	4%	5%
grade 5 events	7501	8763	22657	24465	13924
	3%	4%	7%	9%	4%
grade 6 events	4376	4291	77701	58790	32833
	2%	2%	24%	23%	9%
grade 7 events	166864	161116	128135	106015	188042
	82%	83%	40%	43%	55%

2.2 Compared Parameters

Parameter	Planned	Actual	Parameter	Planned	Actual
Instrument	ACIS	ACIS	Obspar format version number	7	7
Detector	ACIS-23578	ACIS-23578	Obspar file type	PREDICTED	ACTUAL
Grating	NONE	NONE	Obspar update status	NONE	UPDATED
Data mode	VFAINT	VFAINT	CCD I0 on	N	N
Observation mode	POINTING	POINTING	CCD I1 on	N	N
[deg] Pointing RA	263.945969	263.9208332855974	CCD I2 on	O4	Y
[deg] Pointing Dec	-40.209180	-40.18974298383374	CCD I3 on	O5	Y
[deg] Pointing Roll	103.685831	103.8262335808277	CCD S0 on	N	N
[mm] SIM focus pos	-0.684267	-0.6828225247311905	CCD S1 on	O3	Y
[mm] SIM defocus	0	0.001444936568705701	CCD S2 on	O1	N
[mm] SIM translation stage pos	-190.132523	-190.1400660498719	CCD S3 on	Y	Y
[mm] SIM translation stage offset	0	0.00754346686406393	CCD S4 on	O2	Y
[s] Observation start time (MET)	444334216.184000	444332666.33165	CCD S5 on	N	N
Observation start date	2012-01-30T18:09:10	2012-01-30T17:44:26	Number of optional ACIS chips dropped	1	1
[s] Observation end time (MET)	444364792.184000	444365826.10841	On-chip summing requested	N	N
Observation end date	2012-01-31T02:38:46	2012-01-31T02:57:06	Subarray requested	NONE	NONE
Read mode	TIMED	TIMED	Alternating exposures requested	N	N
			[s] Primary exposure time	0.000000	3.1

2.3 Aspect



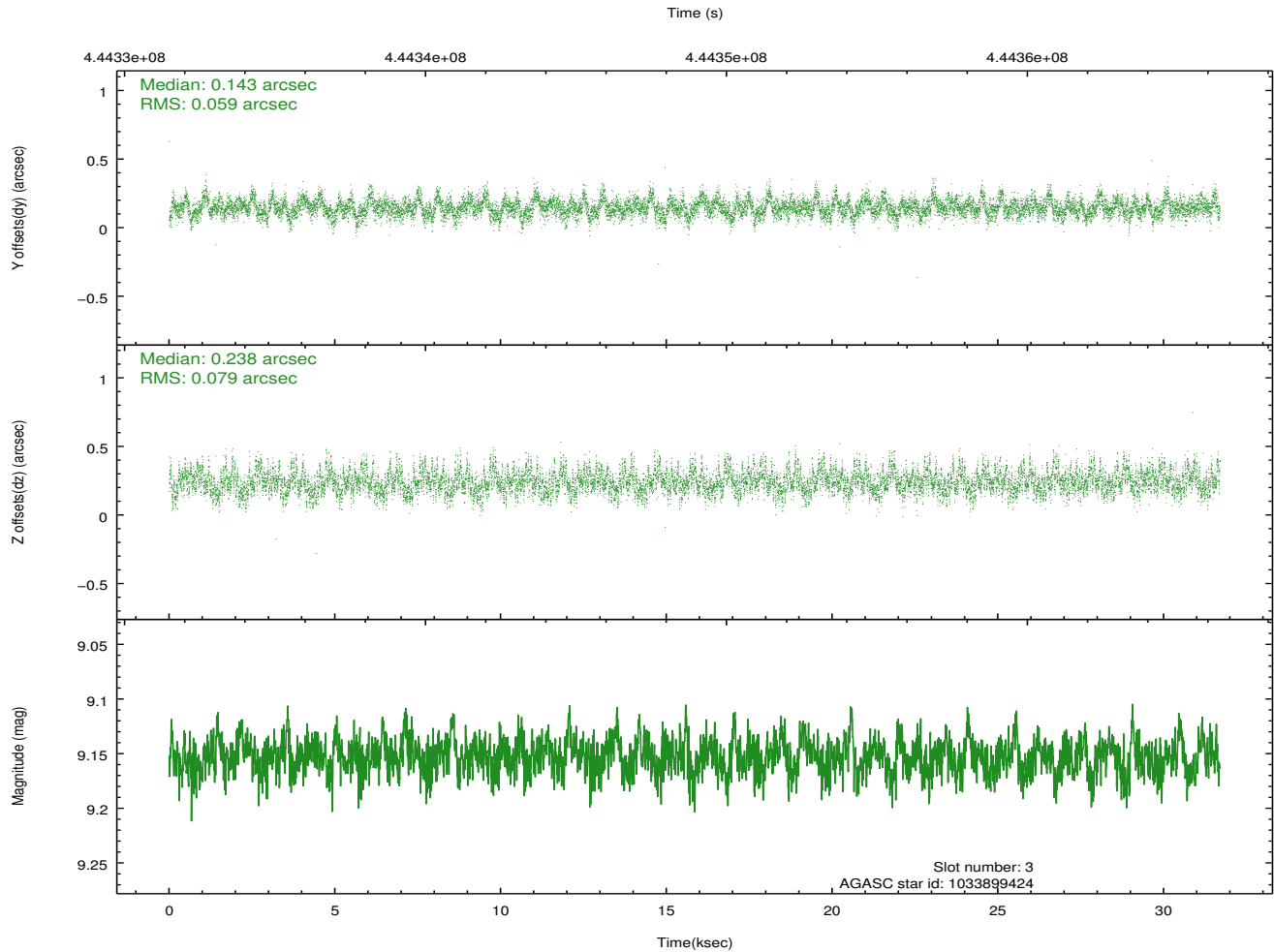
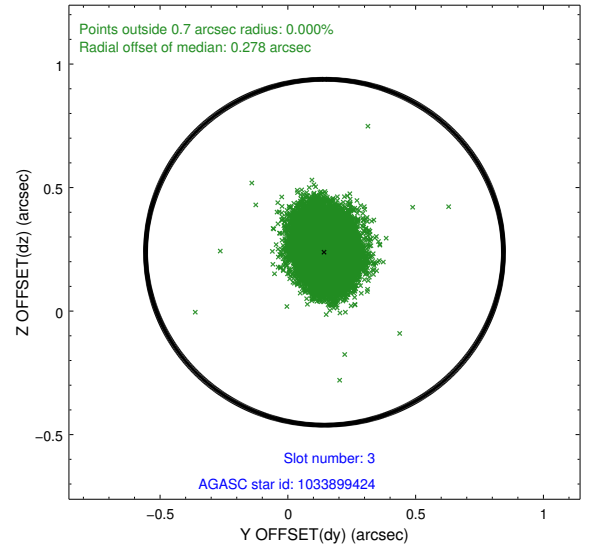
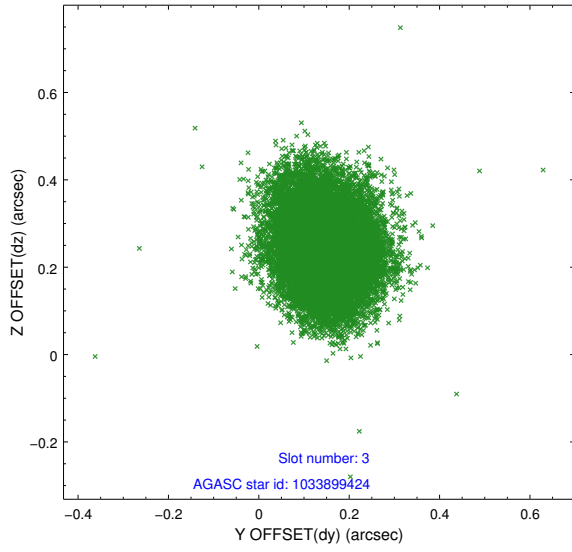


Slot Statistics

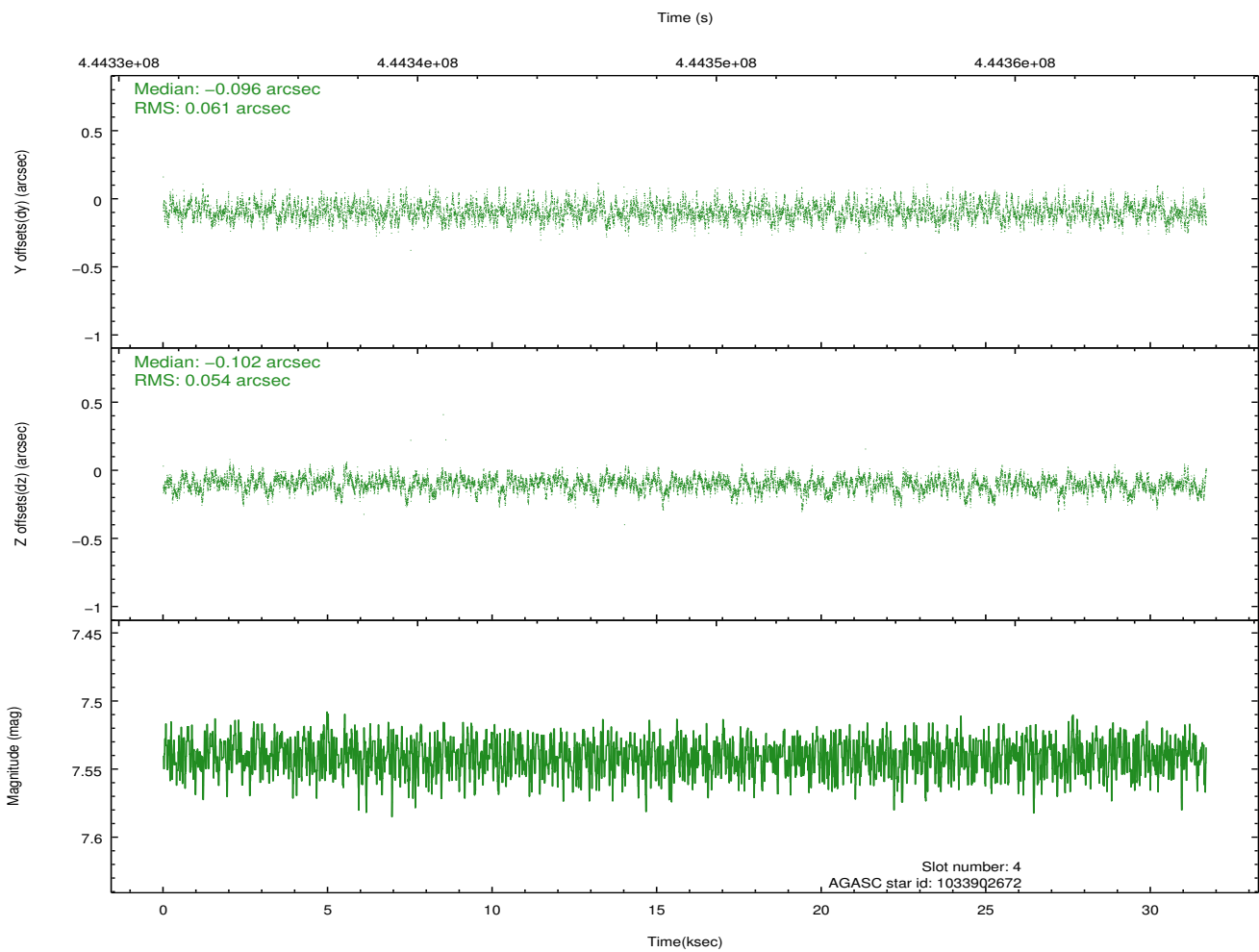
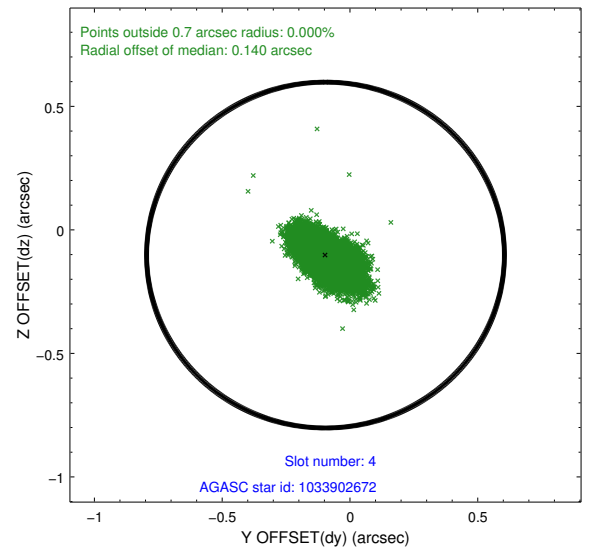
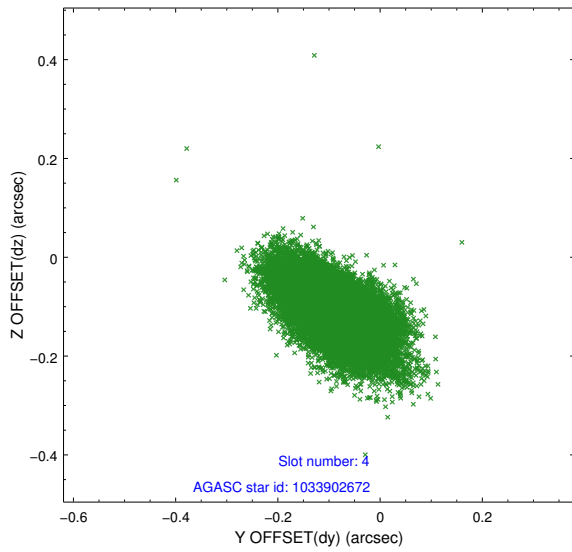
slot	status	id	mag	n_pts	med_dy	med_dz	dr1	dr2	ra	dec	mean_y	mean_z
0	FID	ACIS-S-2	6.88	7731	-0.082	-0.044	0.008	0.015	0.000000	0.000000	-768.08	-1739.24
1	FID	ACIS-S-4	6.97	7730	0.221	0.052	0.008	0.013	0.000000	0.000000	2145.54	169.17
2	FID	ACIS-S-5	7.00	7731	-0.170	0.002	0.011	0.018	0.000000	0.000000	-1820.86	163.01
3	GUIDE	1033899424	9.15	15448	0.143	0.238	0.104	0.172	264.822523	-40.303719	-910.85	-2254.50
4	GUIDE	1033902672	7.54	15458	-0.096	-0.102	0.084	0.146	263.594399	-40.531191	-900.76	1209.25
5	GUIDE	1033903104	8.88	15450	0.042	0.157	0.086	0.142	264.726601	-40.185626	-434.15	-2103.34
6	GUIDE	1033910424	9.23	15435	-0.221	-0.008	0.145	0.227	264.599679	-39.530719	1937.69	-2339.45
7	GUIDE	1033928688	8.95	15444	0.128	-0.300	0.113	0.178	263.333689	-40.746783	-1490.92	2081.37

2.4 Star Slots

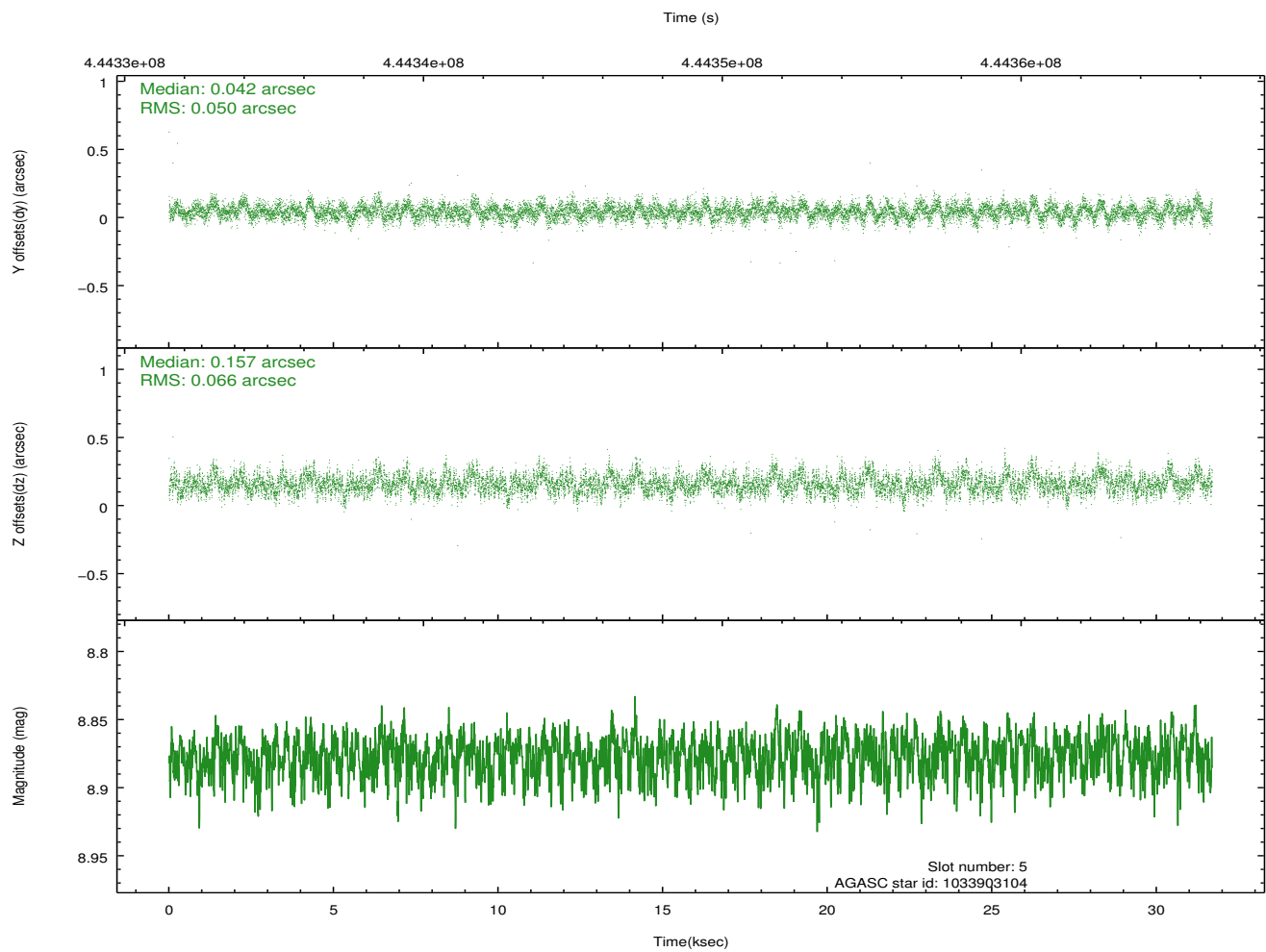
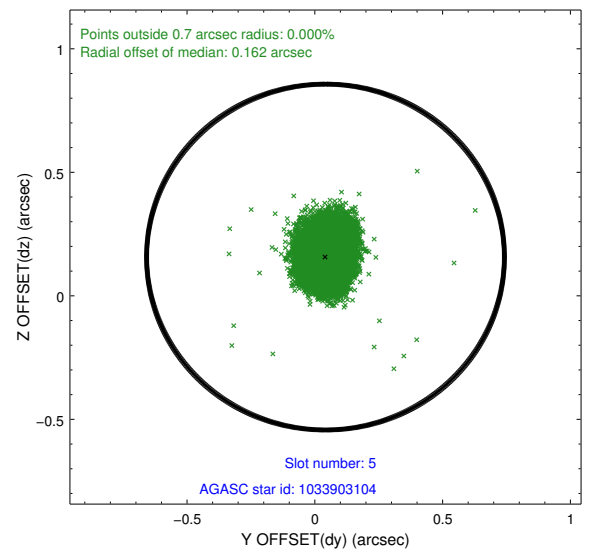
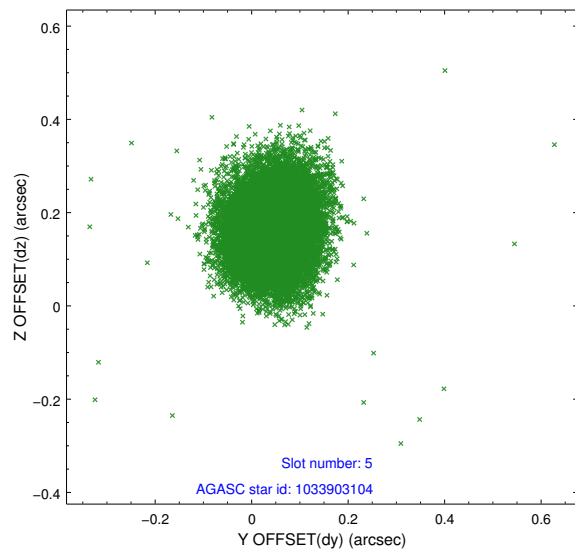
2.4.1 Slot 3



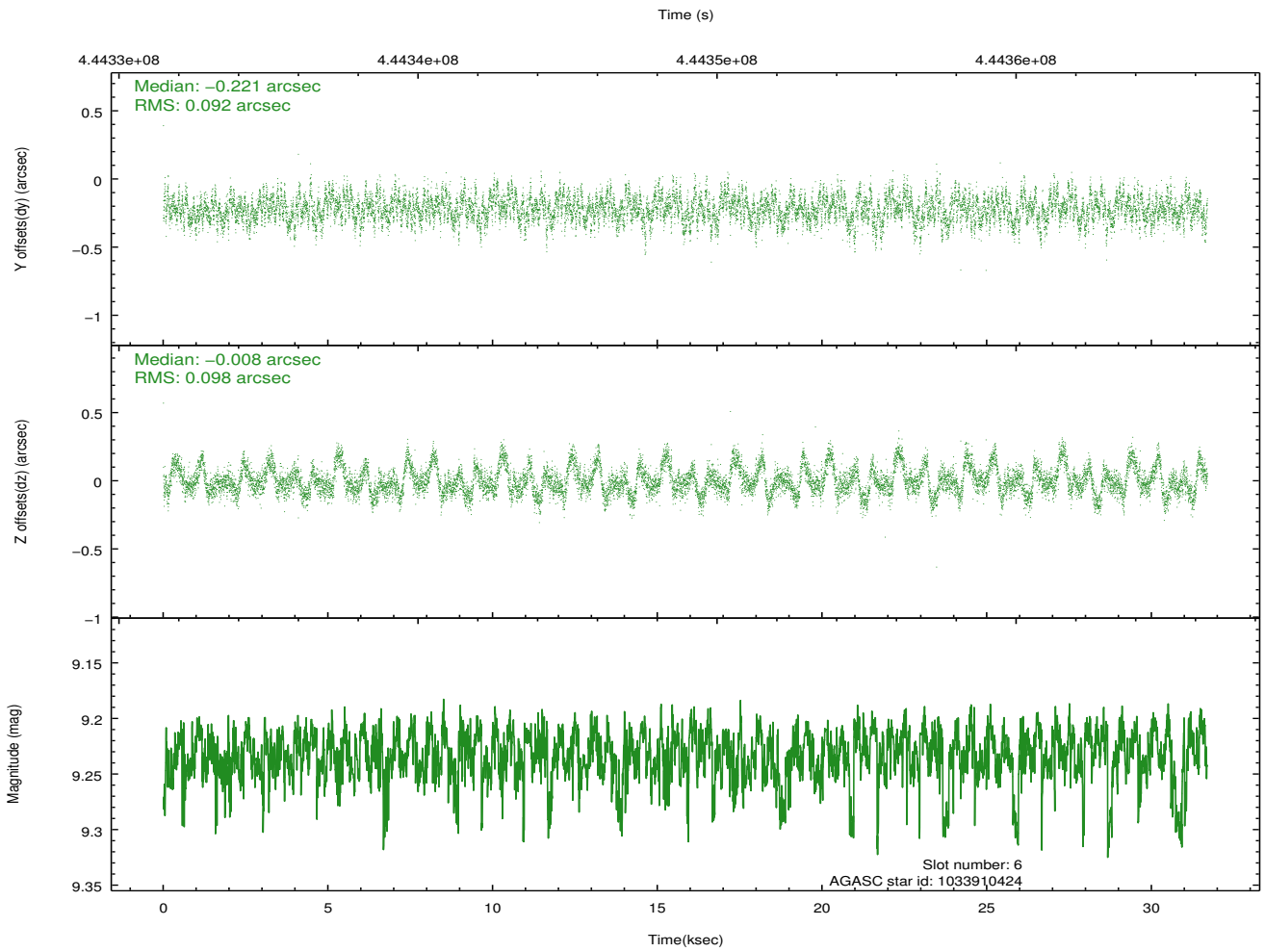
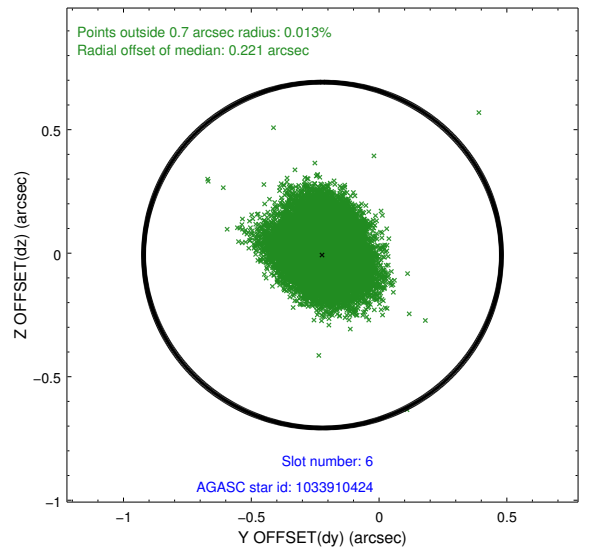
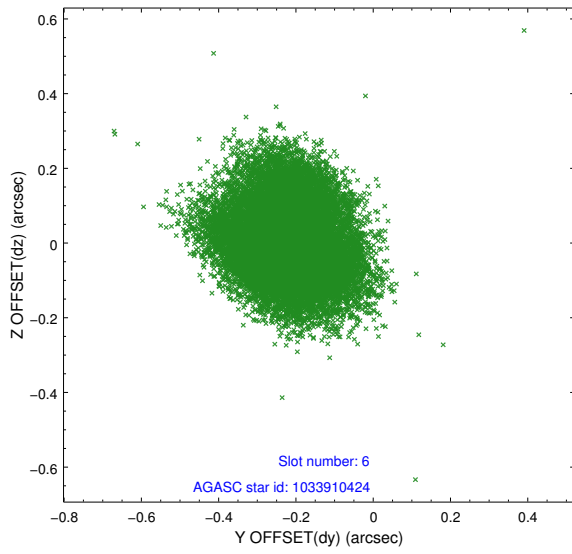
2.4.2 Slot 4



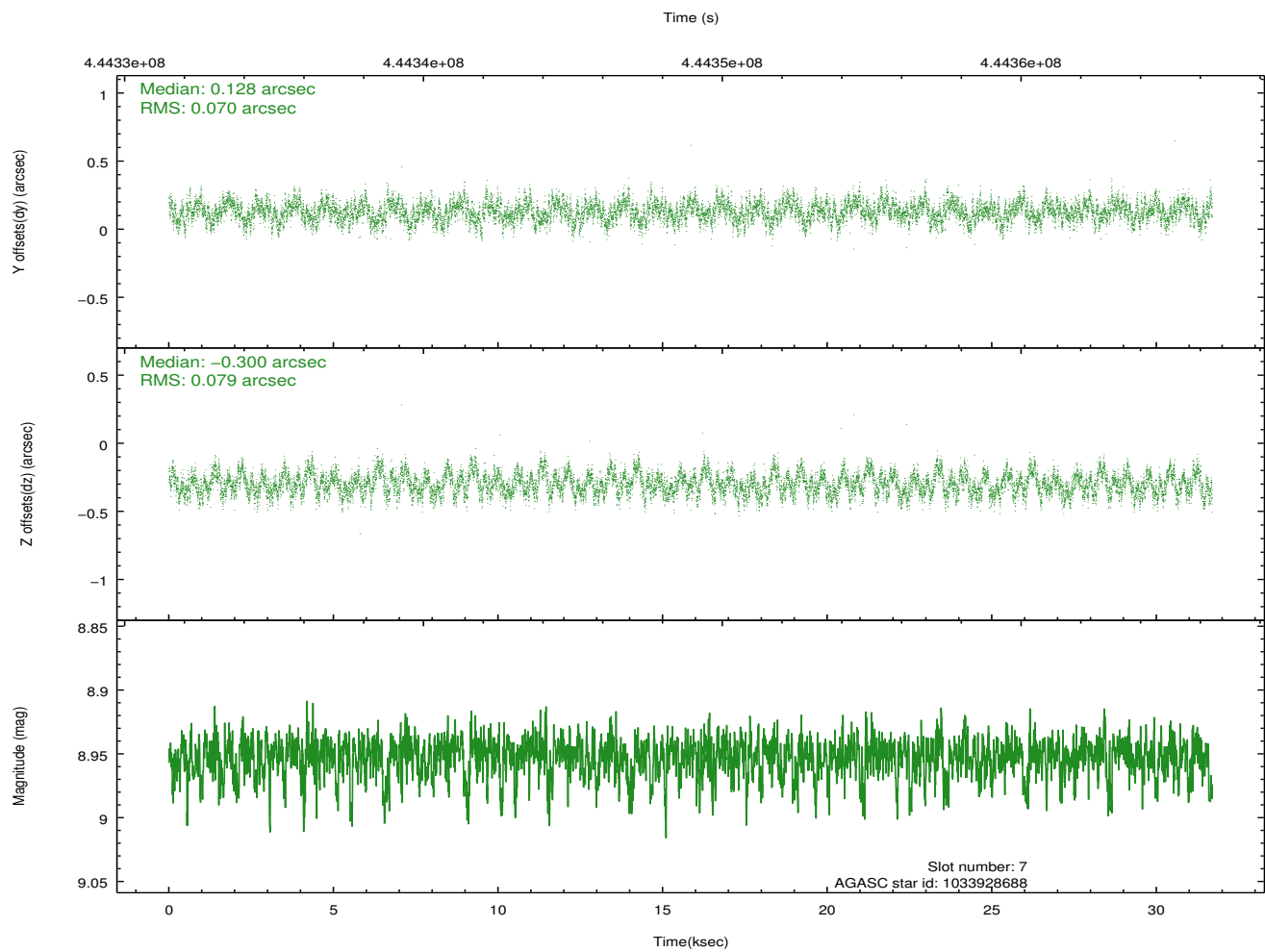
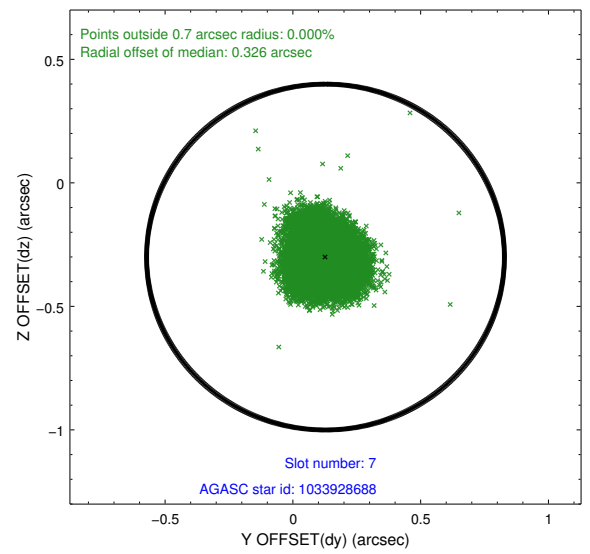
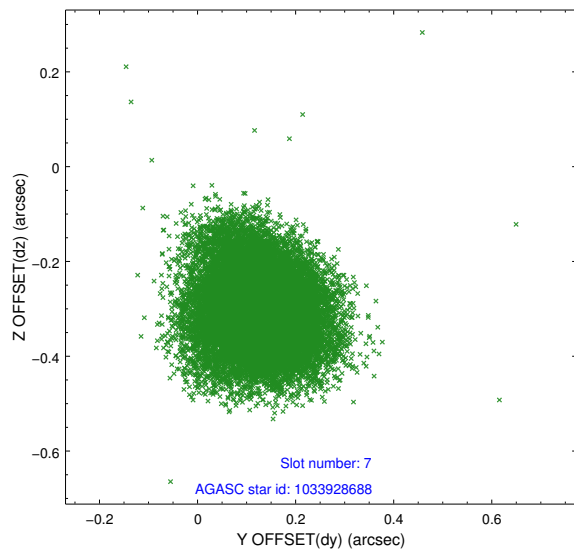
2.4.3 Slot 5



2.4.4 Slot 6

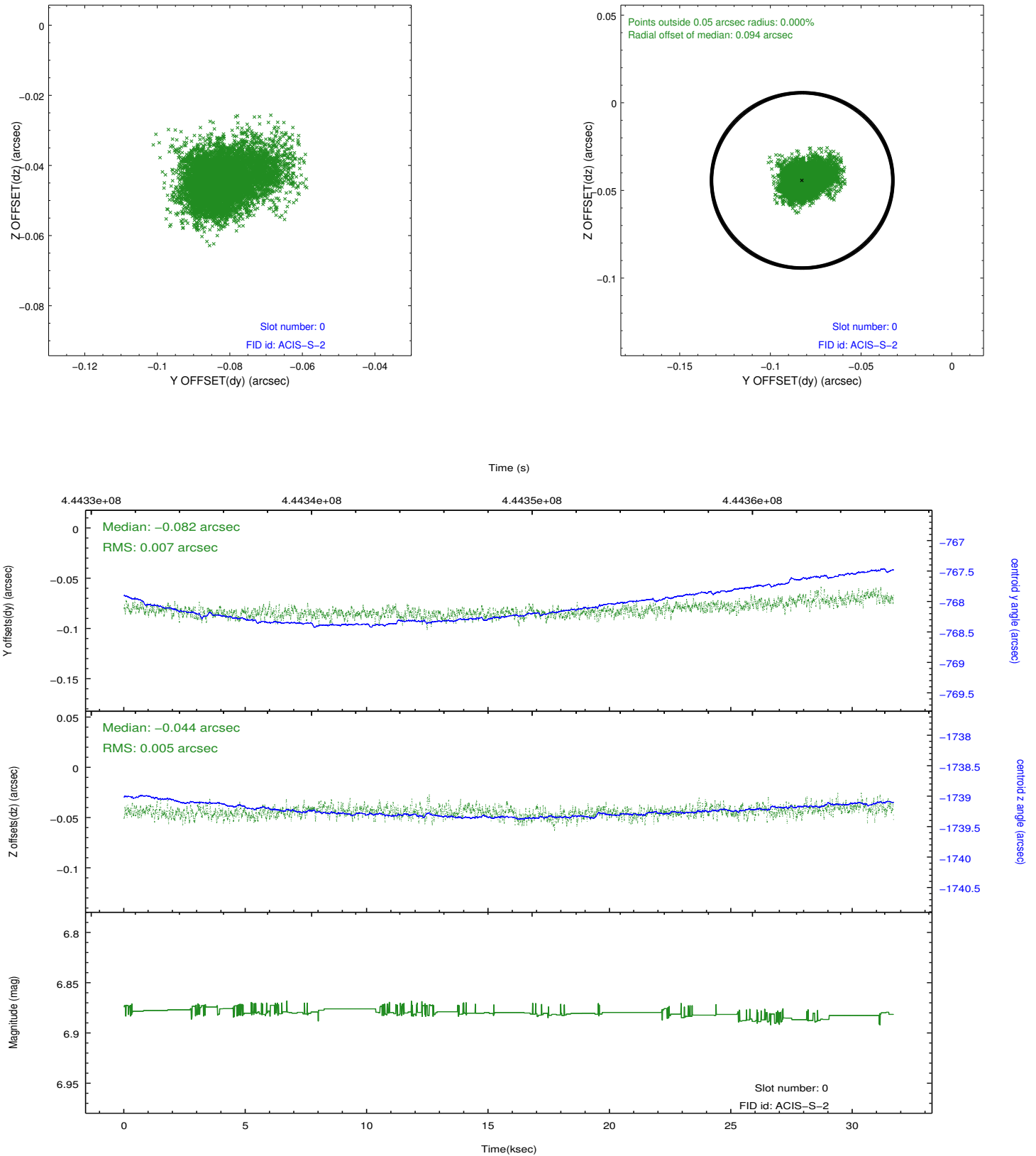


2.4.5 Slot 7

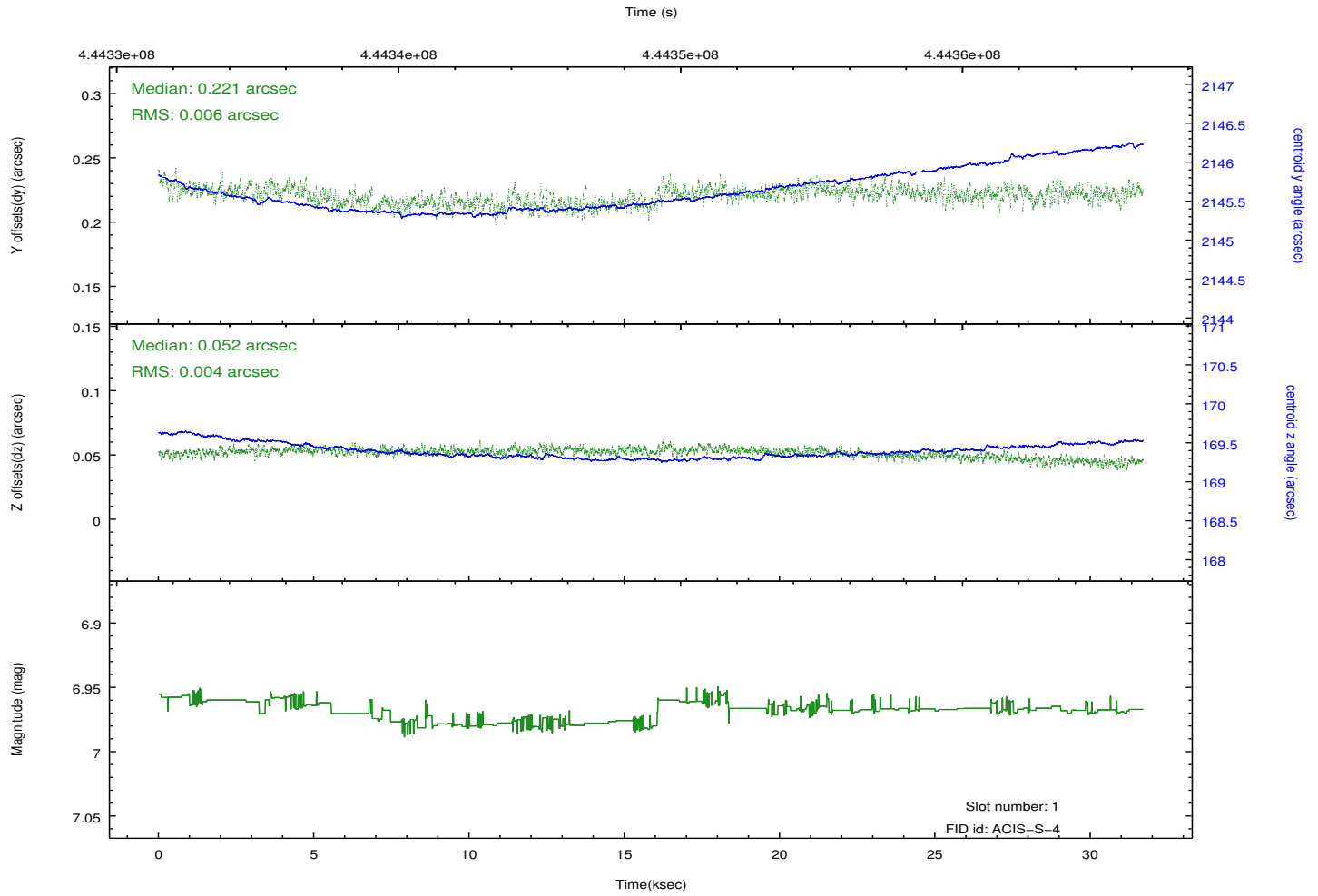
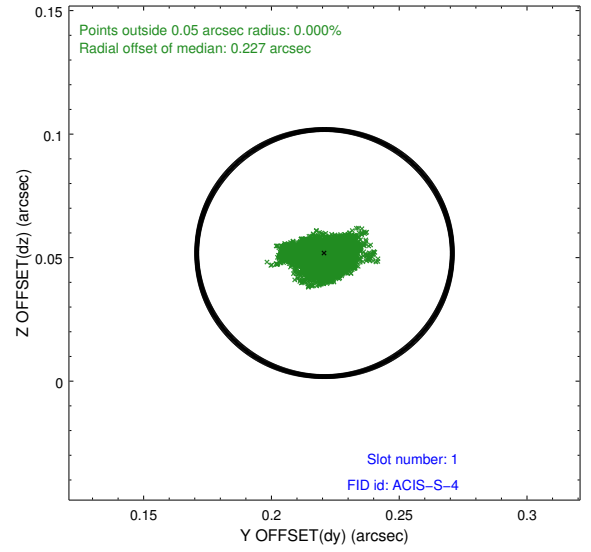
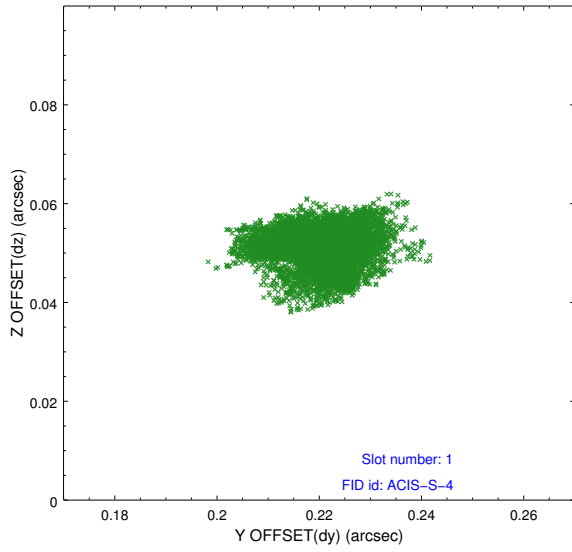


2.5 FID Slots

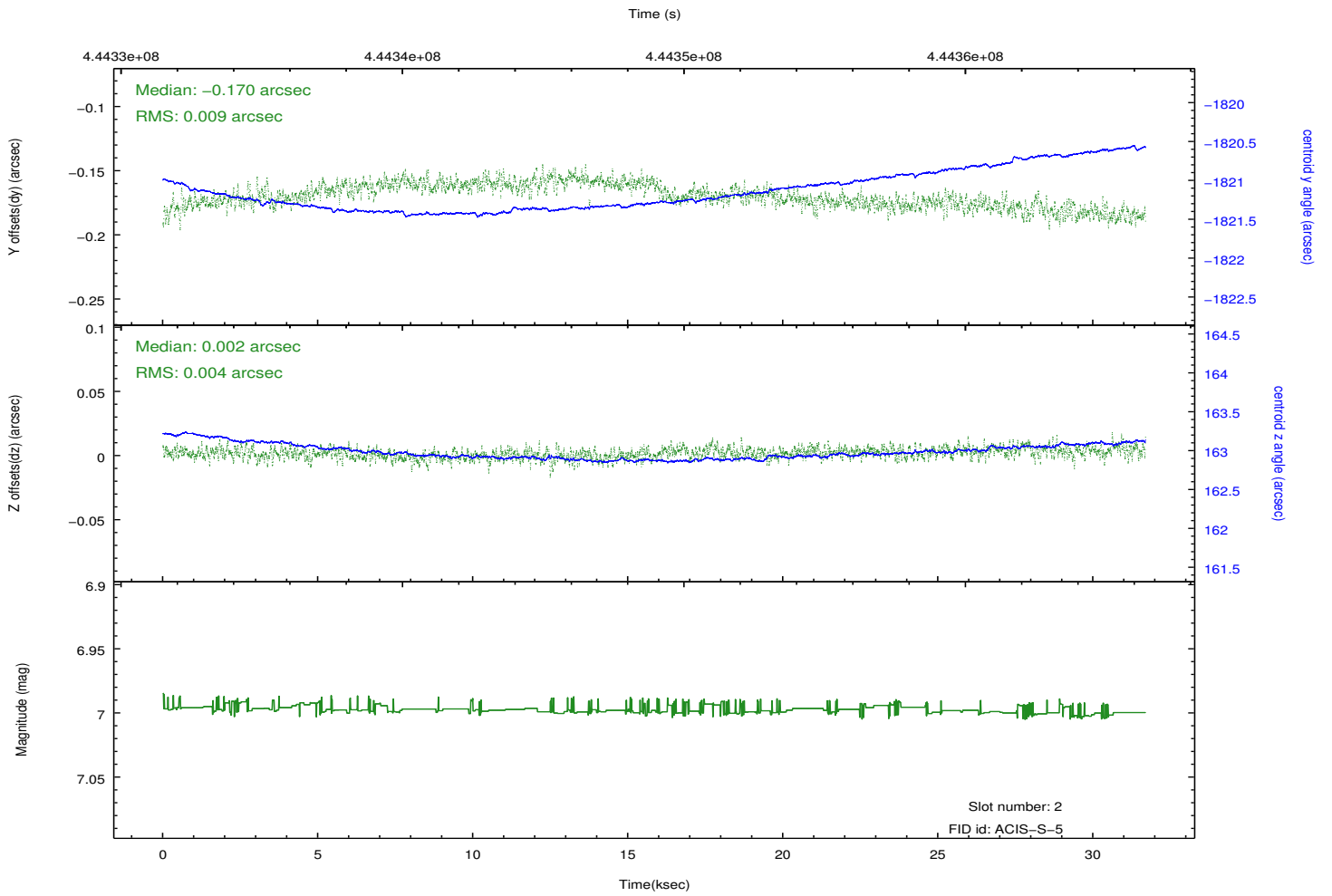
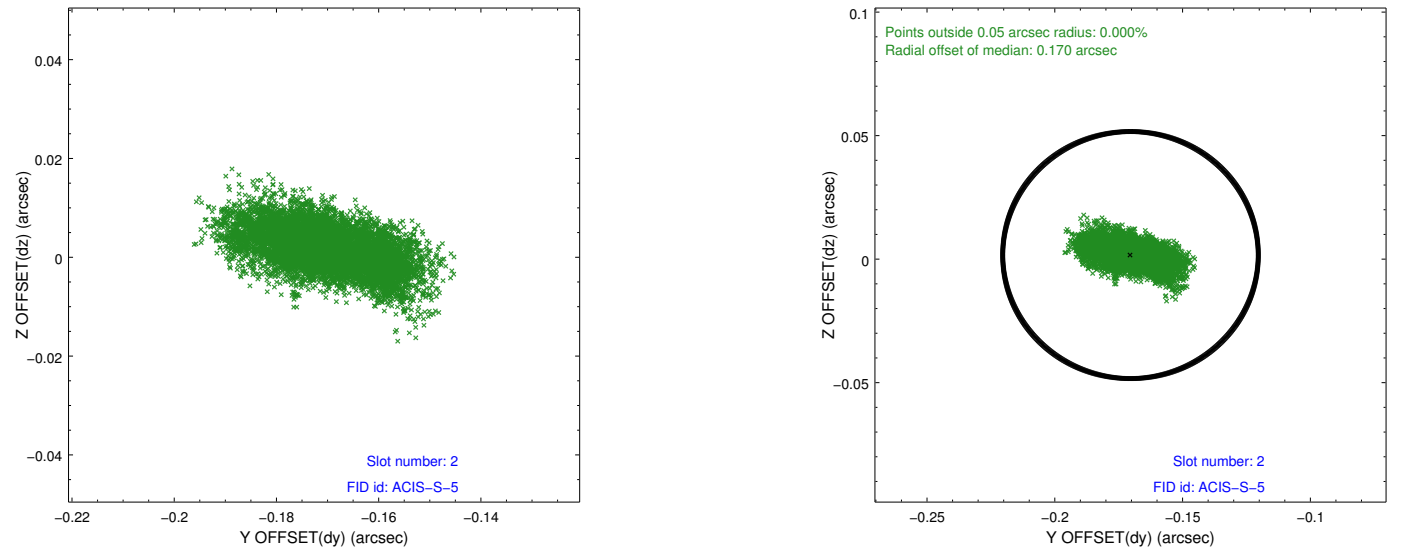
2.5.1 Slot 0



2.5.2 Slot 1



2.5.3 Slot 2



A Summary

A.1 Status

V&V Scientist	Joy Nichols
V&V Date (YYYY-MM-DD)	2012.02.01
V&V Edition	1
V&V Disposition and Status	OK
V&V Charge Time	30.636032874882

A.2 Comments

Optional chip S2 dropped.