

V&V Reference Report

L2 ASCDS Version : 8.1.2

Observation 1237 - L2 Version 3
Chandra X-Ray Center

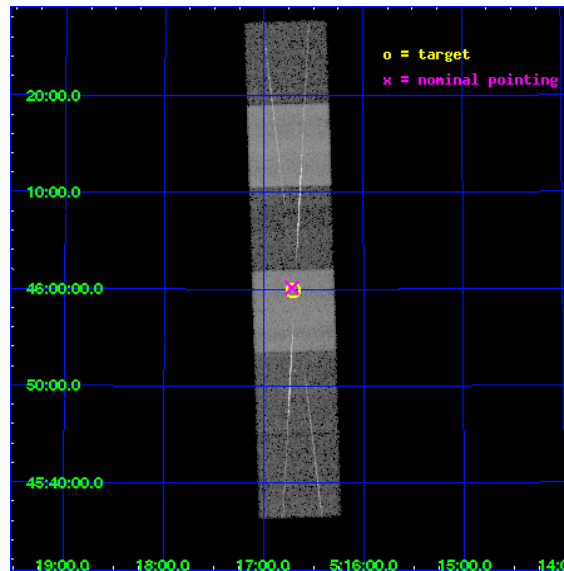
L2 Processing Date : Dec 17 2009

Contents

1	Front	2
2	OBI	3
2.1	OBI	3
2.1.1	Images	3
2.1.2	Bias	3
2.1.3	Parameters	4
2.1.4	Events	4
2.2	Compared Parameters	5
2.3	Aspect	6
2.4	Star Slots	9
2.4.1	Slot 3	9
2.4.2	Slot 4	10
2.4.3	Slot 5	11
2.4.4	Slot 6	12
2.4.5	Slot 7	13
2.5	FID Slots	14
2.5.1	Slot 0	14
2.5.2	Slot 1	15
2.5.3	Slot 2	16
3	Gratings	17
3.1	HEG Arm	17
3.2	MEG Arm	19
A	Summary	21
A.1	Status	21
A.2	Comments	21

1 Front

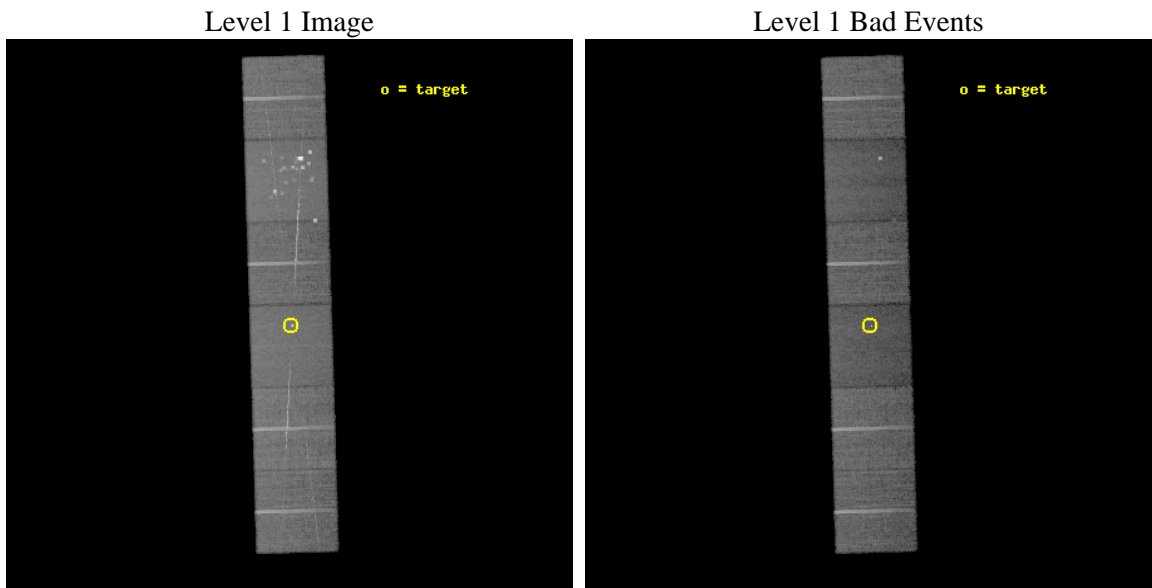
seq_num	280187	Sequence number
obs_id	1237	Observation id
title	 	Proposal title
observer	Dr. CXC Calibration	Principal investigator
object	CAPELLA	Source name
dtcycle	0	
cycle	P	events from which exps? Prim/Second/Both
ra_targ	79.17625	Observer's specified target RA
dec_targ	45.997889	Observer's specified target Dec
ra_nom	79.179621402133	Nominal RA
dec_nom	46.002601003881	Nominal Dec
roll_nom	88.267347225534	Nominal Roll
revision	3	Processing version of data
ontime	14757.557041824	Sum of GTIs [s]
livetime	14570.687968626	Livetime [s]
ontime4	14757.474991754	Sum of GTIs [s]
ontime5	14757.516001821	Sum of GTIs [s]
ontime6	14757.351841822	Sum of GTIs [s]
ontime7	14757.557041824	Sum of GTIs [s]
ontime8	14757.43395175	Sum of GTIs [s]
ontime9	14757.392881826	Sum of GTIs [s]
l2events	215157	Number of level 2 events



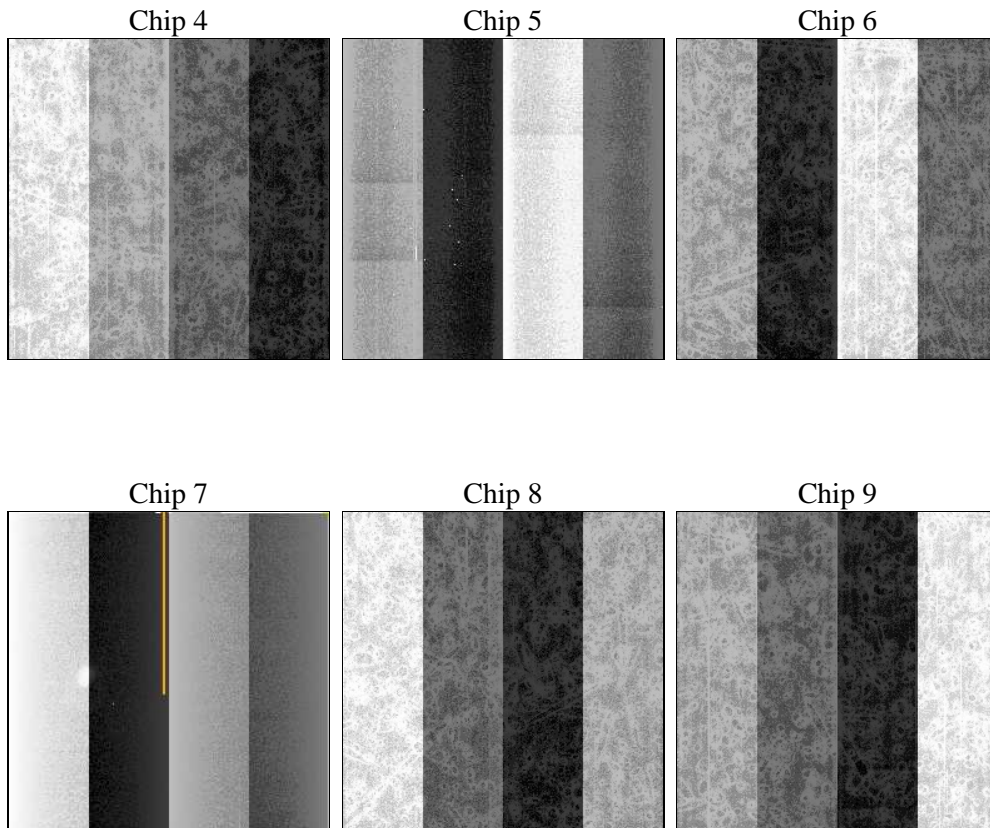
2 OBI

2.1 OBI

2.1.1 Images



2.1.2 Bias



2.1.3 Parameters

obi_num	1	Obi number	sched_exp_time	15000.000000	Scheduled observation exposure time
ascdsver	8.1.2	ASCDS version number	ontime	14757.557041824	Sum of GTIs [s]
caldbver	4.1.4	 	ontime4	14757.474991754	Sum of GTIs [s]
date	2009-12-17T11:57:17	Date and time of file creation	ontime5	14757.516001821	Sum of GTIs [s]
revision	3	Processing version of data	ontime6	14757.351841822	Sum of GTIs [s]
			ontime7	14757.557041824	Sum of GTIs [s]
			ontime8	14757.43395175	Sum of GTIs [s]
			ontime9	14757.392881826	Sum of GTIs [s]
			l1events	1053807	Number of level 1 events

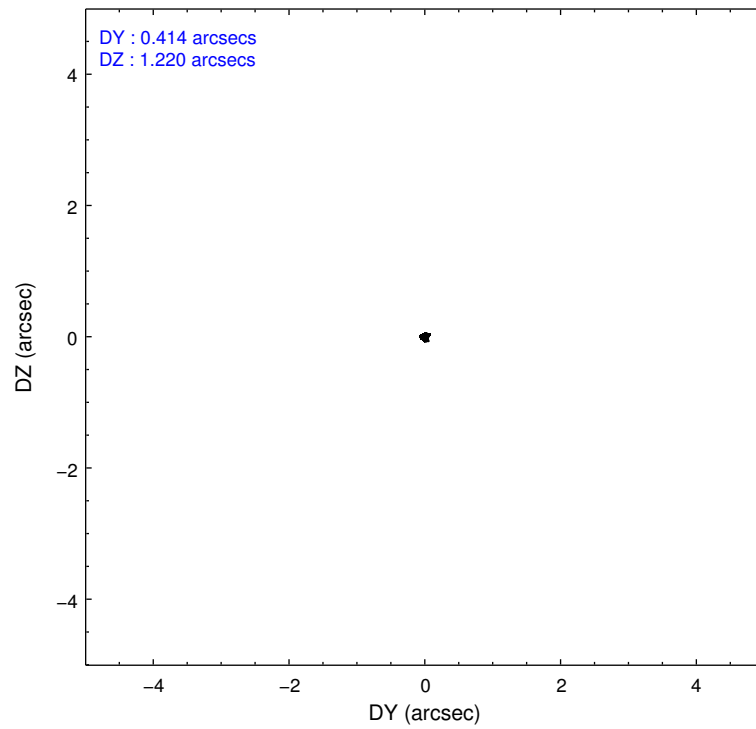
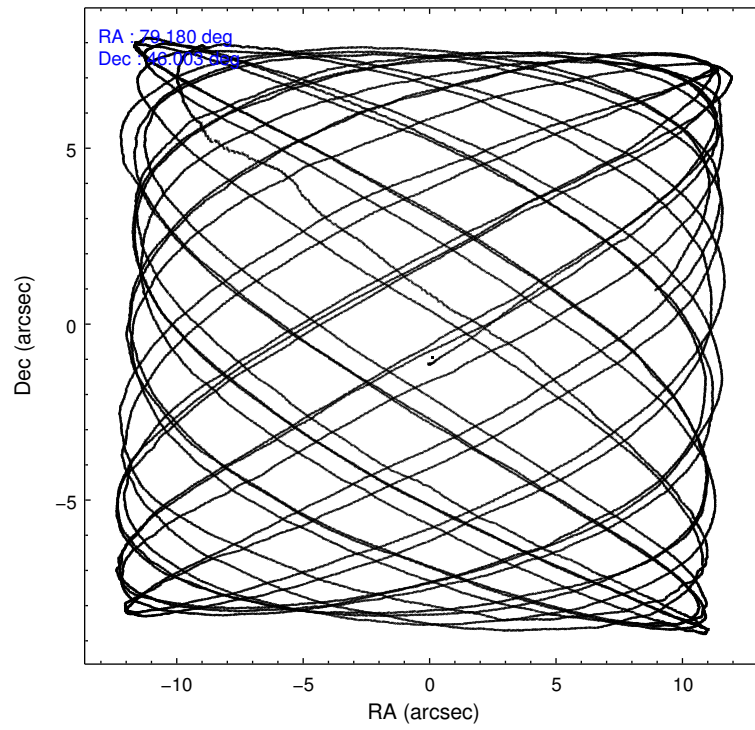
2.1.4 Events

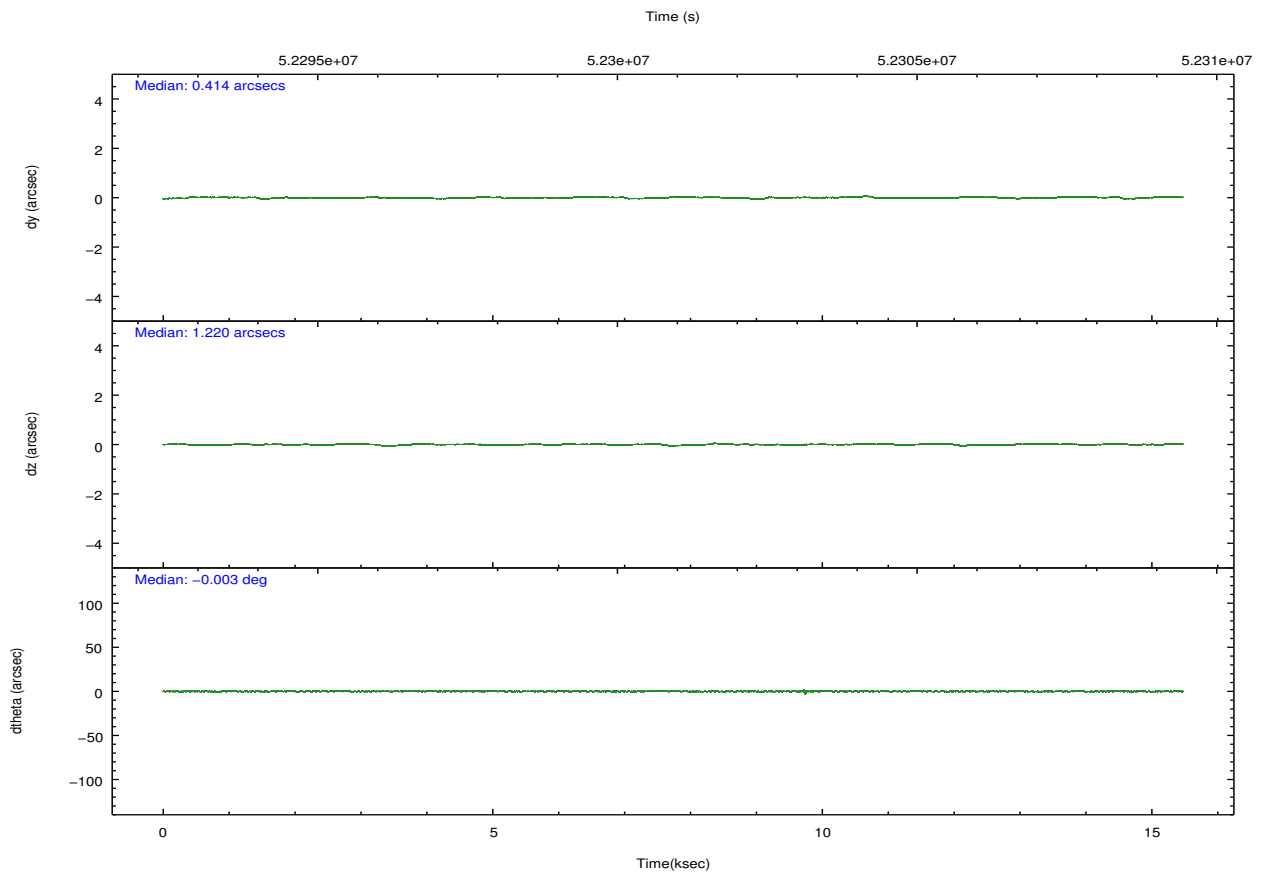
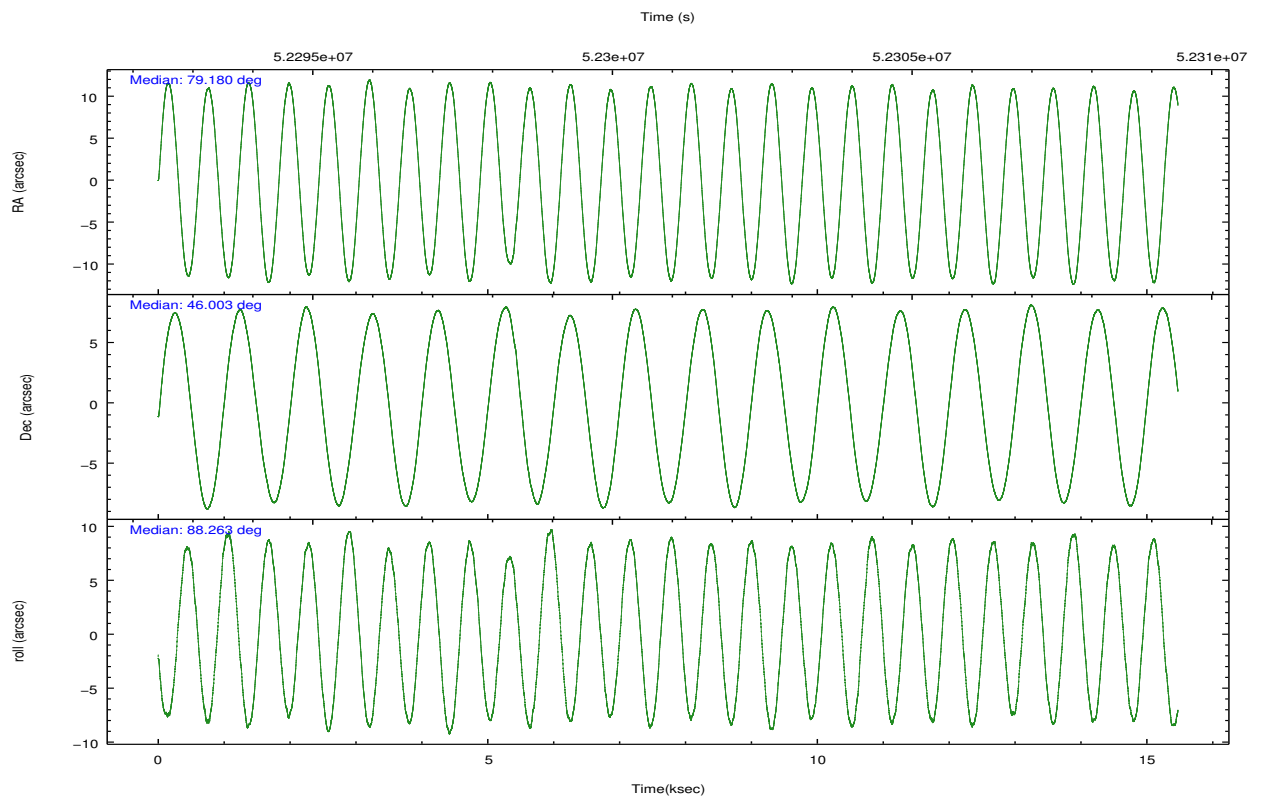
	ccd 4	ccd 5	ccd 6	ccd 7	ccd 8	ccd 9		ccd 4	ccd 5	ccd 6	ccd 7	ccd 8	ccd 9
level 1 events	164071	231975	155113	162313	190444	149891	grade 0 events	5723	44215	10843	5113	16582	6249
rejected events	148743	100341	133291	95731	152959	133539		3%	19%	6%	3%	8%	4%
rejected %	90%	43%	85%	58%	80%	89%	grade 1 events	37	1023	72	176	132	31
								0%	0%	0%	0%	0%	0%
							grade 2 events	4578	26167	5058	11173	9088	4421
								2%	11%	3%	6%	4%	2%
							grade 3 events	1140	7121	1333	6787	2487	1228
								0%	3%	0%	4%	1%	0%
							grade 4 events	1158	6533	1289	5646	2307	1201
								0%	2%	0%	3%	1%	0%
							grade 5 events	2988	8620	3437	10923	4861	3804
								1%	3%	2%	6%	2%	2%
							grade 6 events	2736	47663	3314	37899	7033	3258
								1%	20%	2%	23%	3%	2%
							grade 7 events	145711	90633	129767	84596	147954	129699
								88%	39%	83%	52%	77%	86%

2.2 Compared Parameters

Parameter	Planned	Actual	Parameter	Planned	Actual
Instrument	ACIS	ACIS	Obspar format version number	6	6
Detector	ACIS-456789	ACIS-456789	Obspar file type	PREDICTED	ACTUAL
Grating	HETG	HETG	Obspar update status	NONE	UPDATED
Data mode	FAINT	FAINT	Number of optional ACIS chips dropped	0	0
Observation mode	POINTING	POINTING	On-chip summing requested	N	N
Pointing RA	79.197869	79.17962140213325	Subarray requested	NONE	NONE
Pointing Dec	45.978050	46.00260100388063	Alternating exposures requested	N	N
Pointing Roll	88.097598	88.26734722553387	Primary exposure time	0.000000	3.2
SIM focus pos (mm)	-0.484267	-0.5408574722601351			
SIM defocus (mm)	0.2	0.1434099890397611			
SIM translation stage pos (mm)	-190.132523	-190.1425803651734			
SIM translation stage offset (mm)	0	0.01005778216563158			
Observation start time	52293664.184000	52292997.578769			
Observation start date	1999-08-29T06:00:00	1999-08-29T05:49:57			
Observation end time	52308664.184000	52309158.24185			
Observation end date	1999-08-29T10:10:00	1999-08-29T10:19:18			
Read mode	TIMED	TIMED			

2.3 Aspect



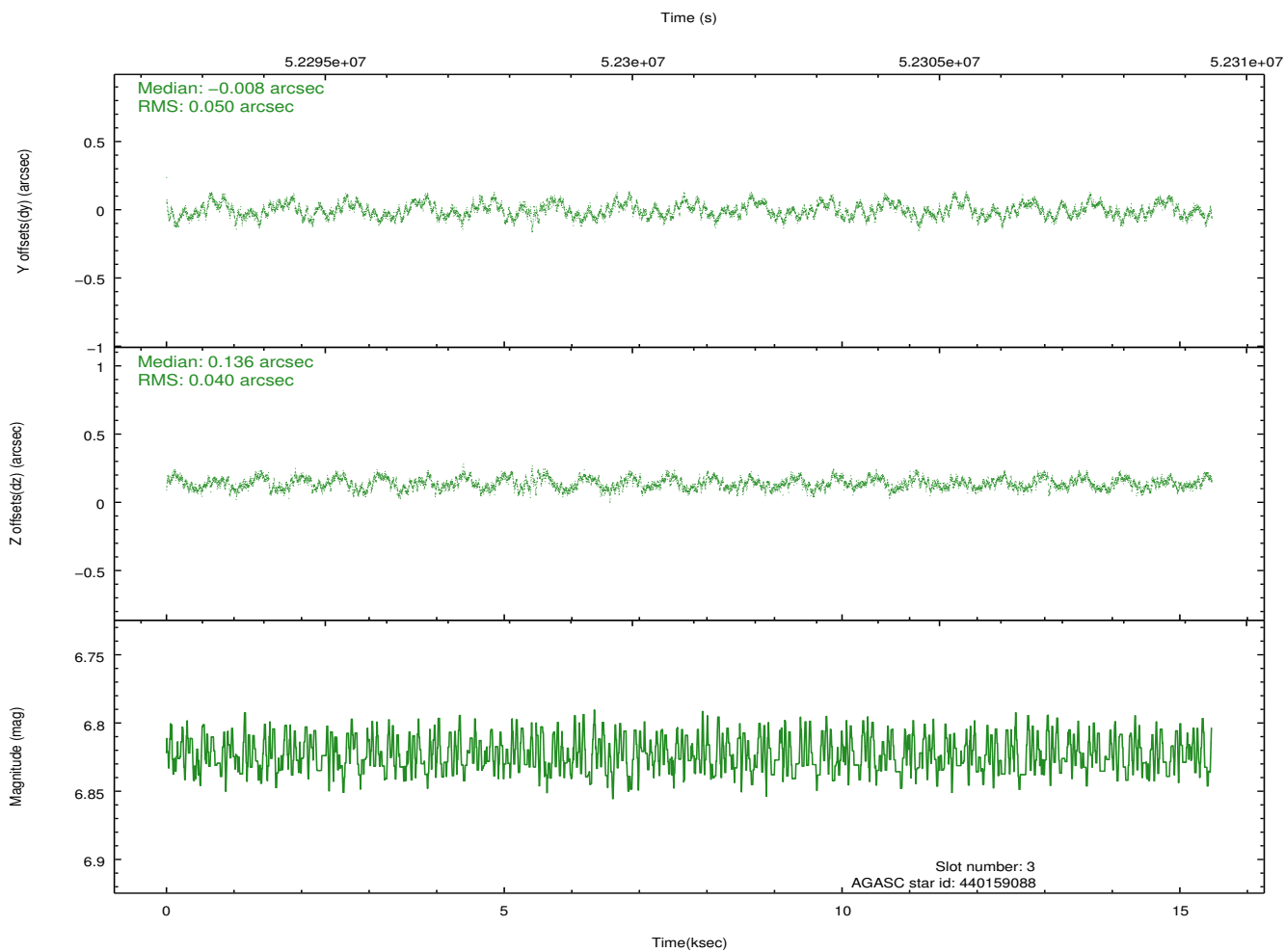
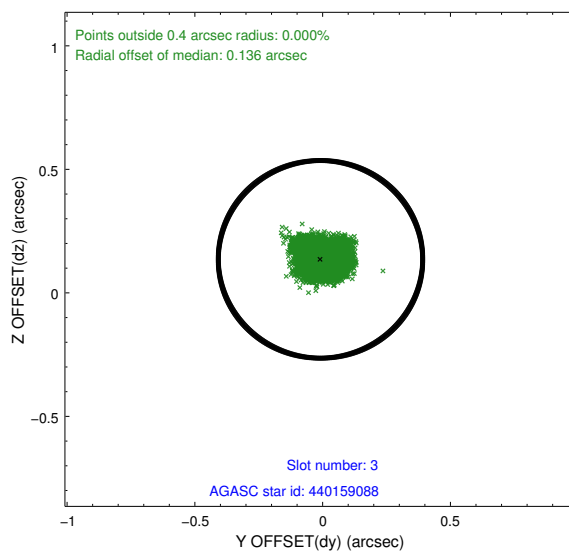
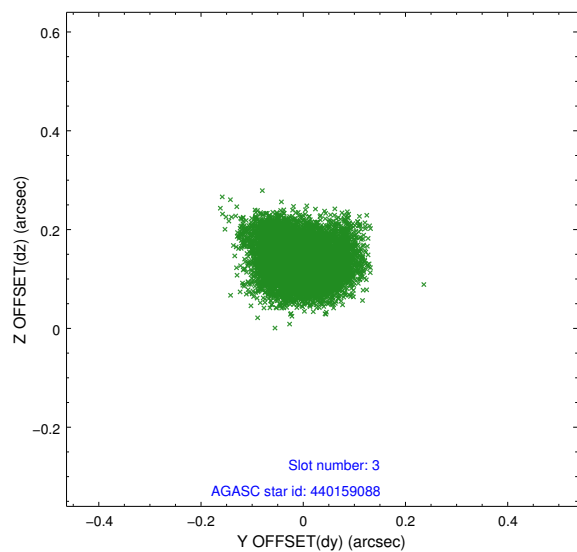


Slot Statistics

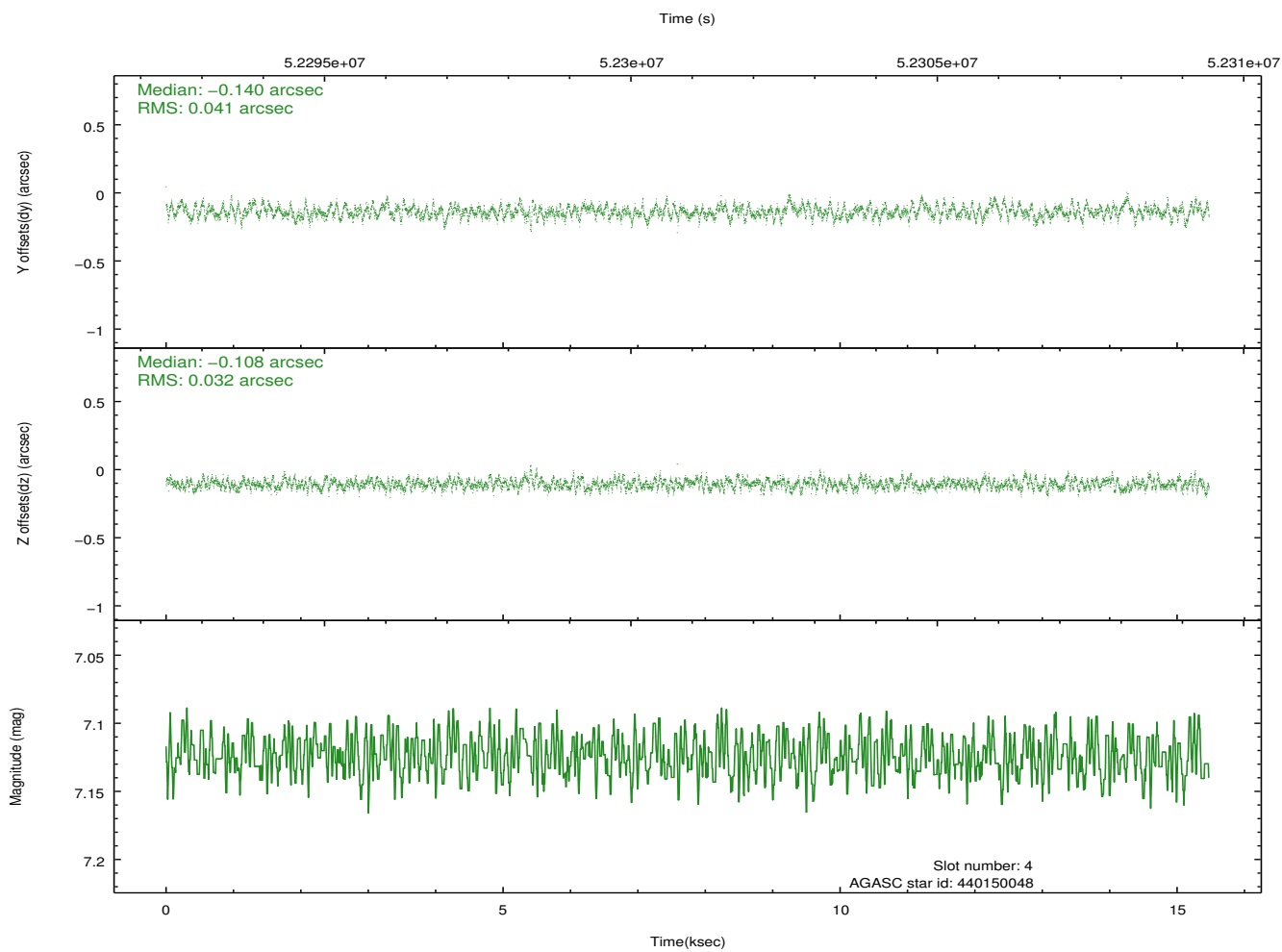
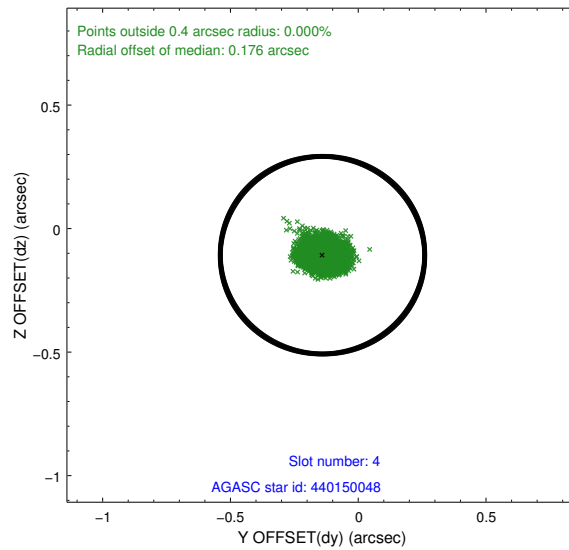
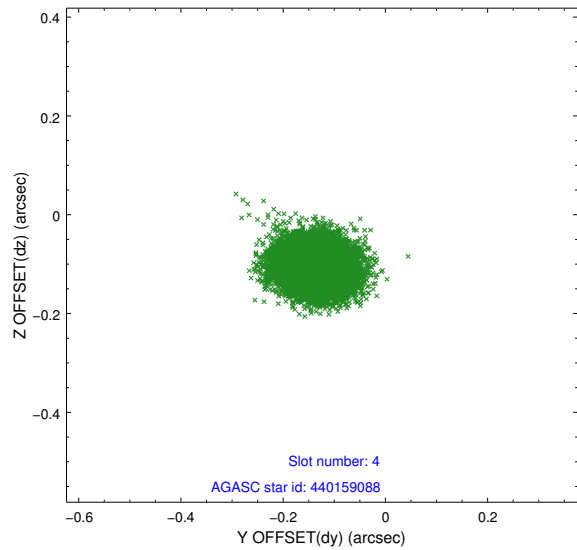
slot	status	id	mag	n_pts	med_dy	med_dz	dr1	dr2	ra	dec	mean_y	mean_z
0	FID	ACIS-S-2	7.12	7549	-0.016	0.009	0.006	0.011	0.000000	0.000000	-753.05	-1722.17
1	FID	ACIS-S-4	7.22	7549	0.064	0.005	0.005	0.010	0.000000	0.000000	2160.36	186.21
2	FID	ACIS-S-5	7.25	7549	-0.079	-0.006	0.006	0.010	0.000000	0.000000	-1805.84	180.02
3	GUIDE	440159088	6.82	7549	-0.008	0.136	0.069	0.109	79.453034	46.128063	560.76	-618.54
4	GUIDE	440150048	7.12	7548	-0.140	-0.108	0.056	0.089	79.112838	46.416060	1567.81	262.80
5	GUIDE	440149808	8.42	7546	-0.064	-0.003	0.056	0.091	78.873930	46.405955	1513.45	854.64
6	GUIDE	438460832	8.98	7547	0.102	-0.212	0.100	0.160	78.414614	45.554782	-1579.84	1922.51
7	GUIDE	440145944	9.09	7547	0.103	0.183	0.078	0.125	80.083717	45.428844	-1890.57	-2302.20

2.4 Star Slots

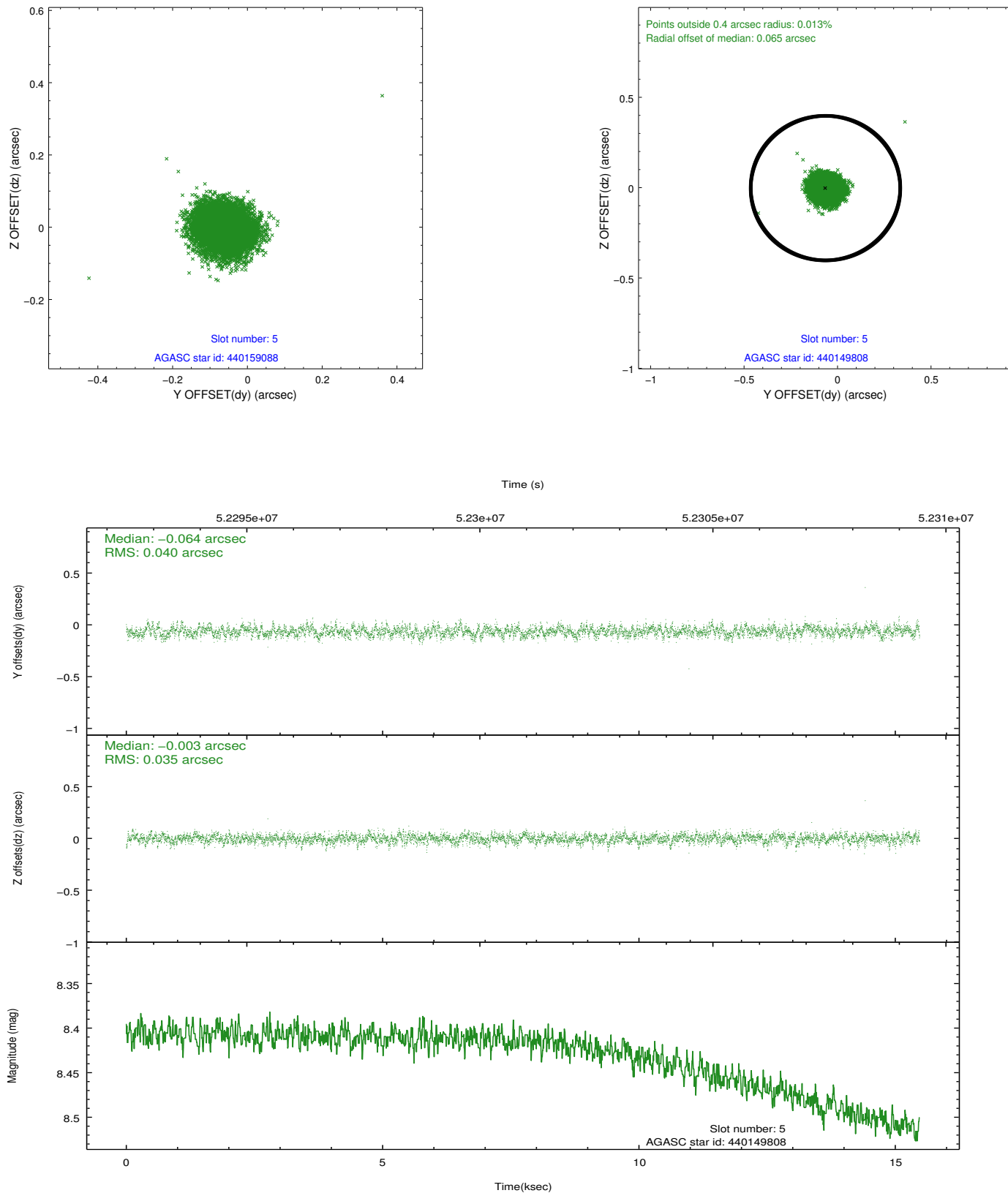
2.4.1 Slot 3



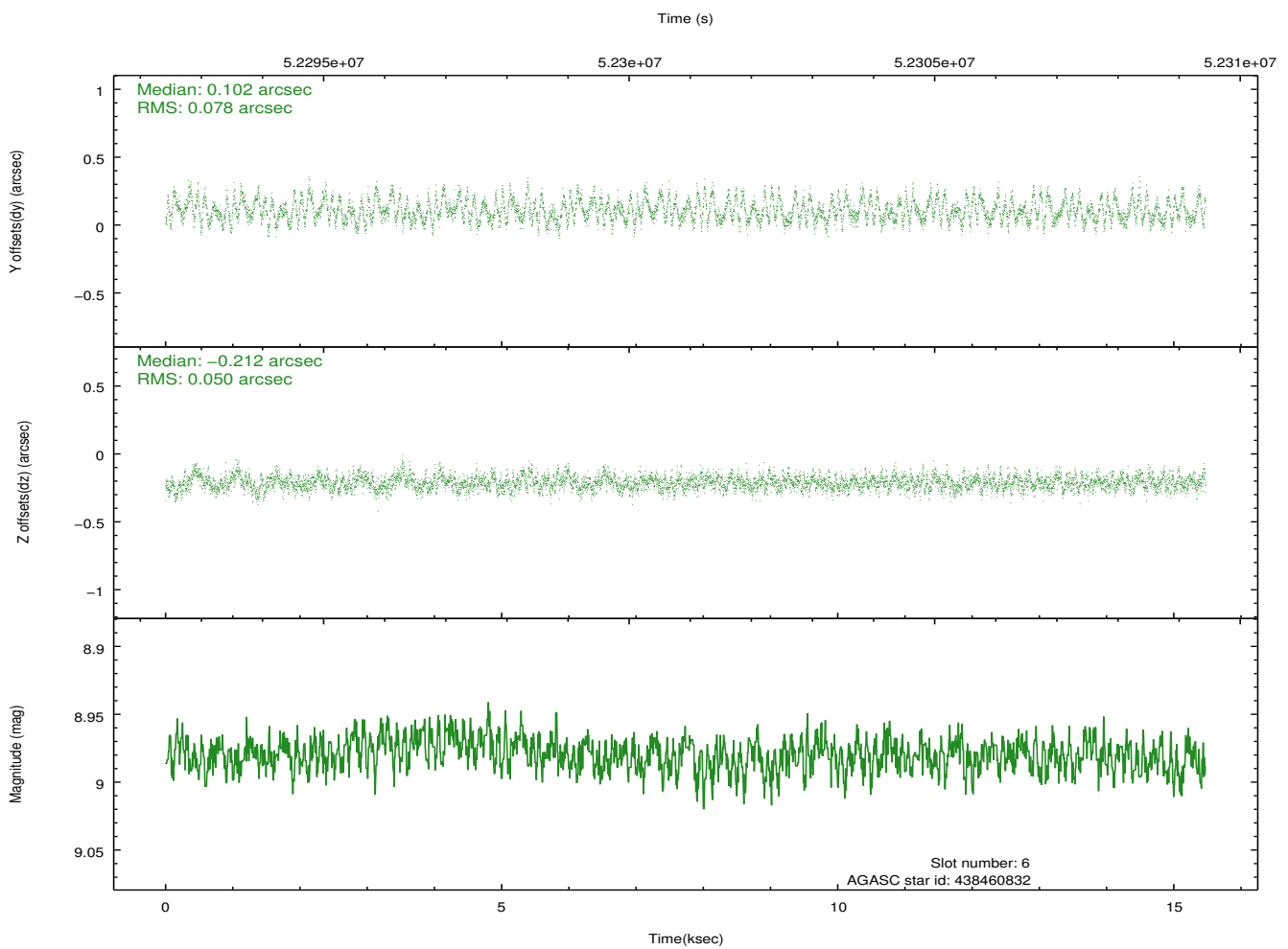
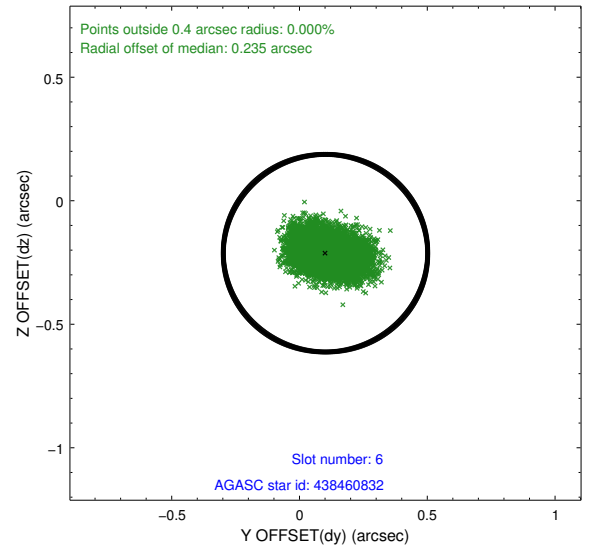
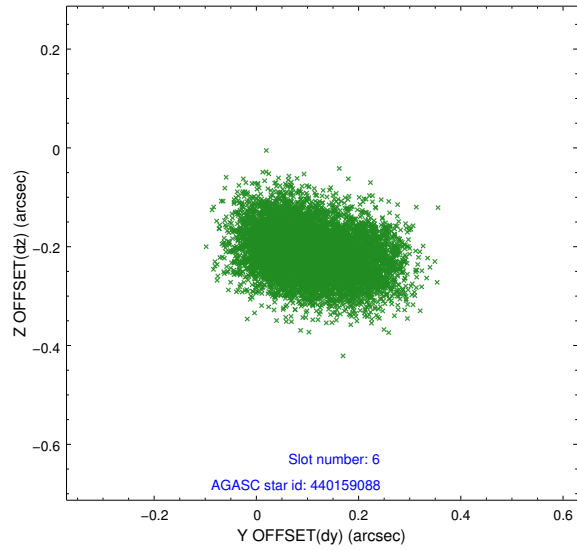
2.4.2 Slot 4



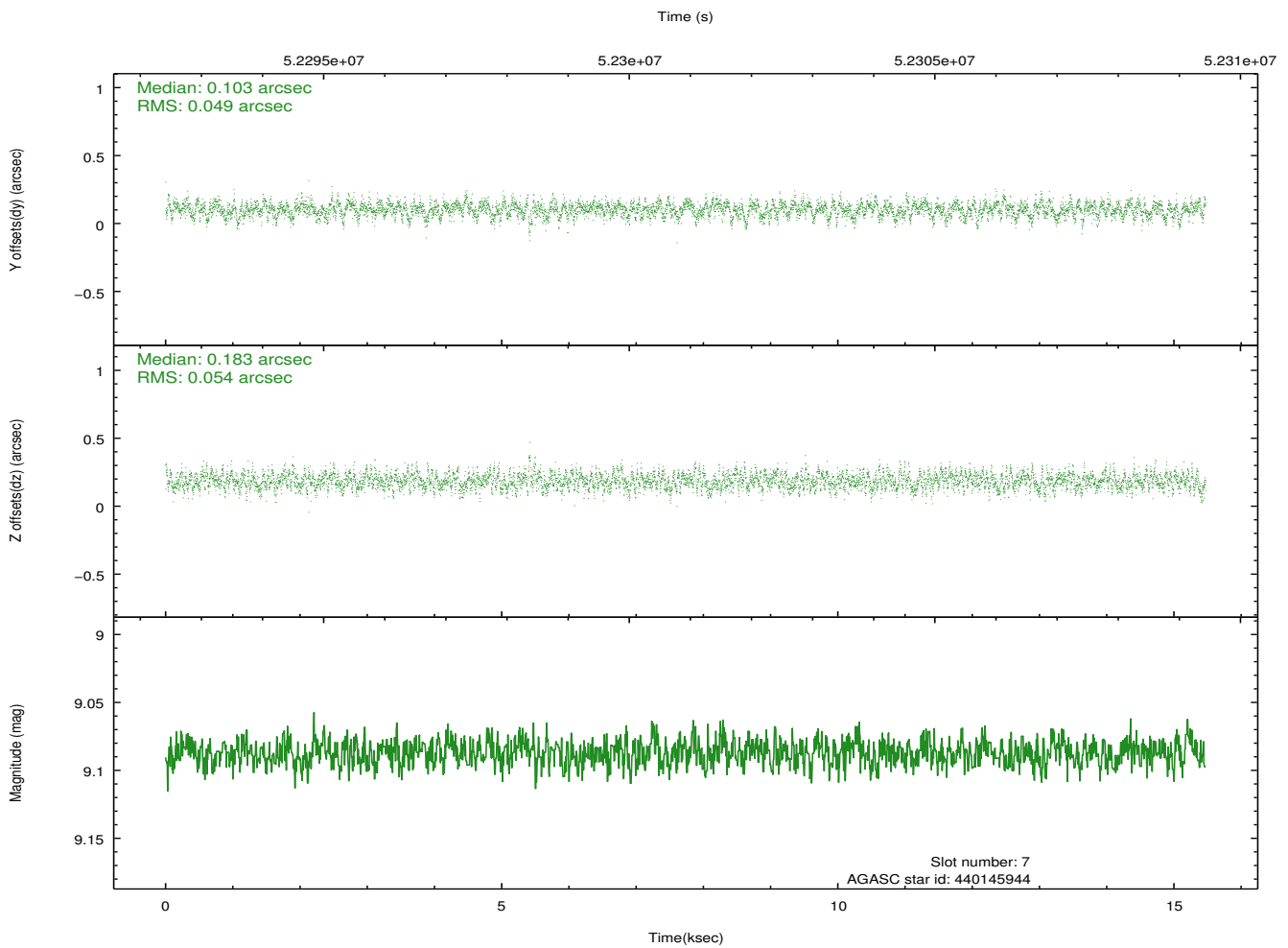
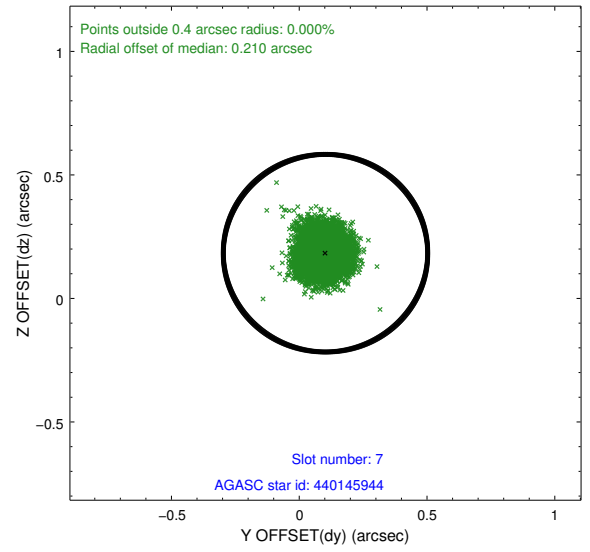
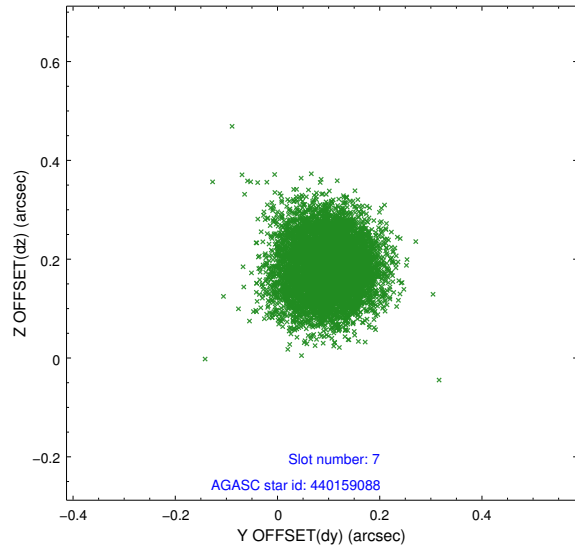
2.4.3 Slot 5



2.4.4 Slot 6

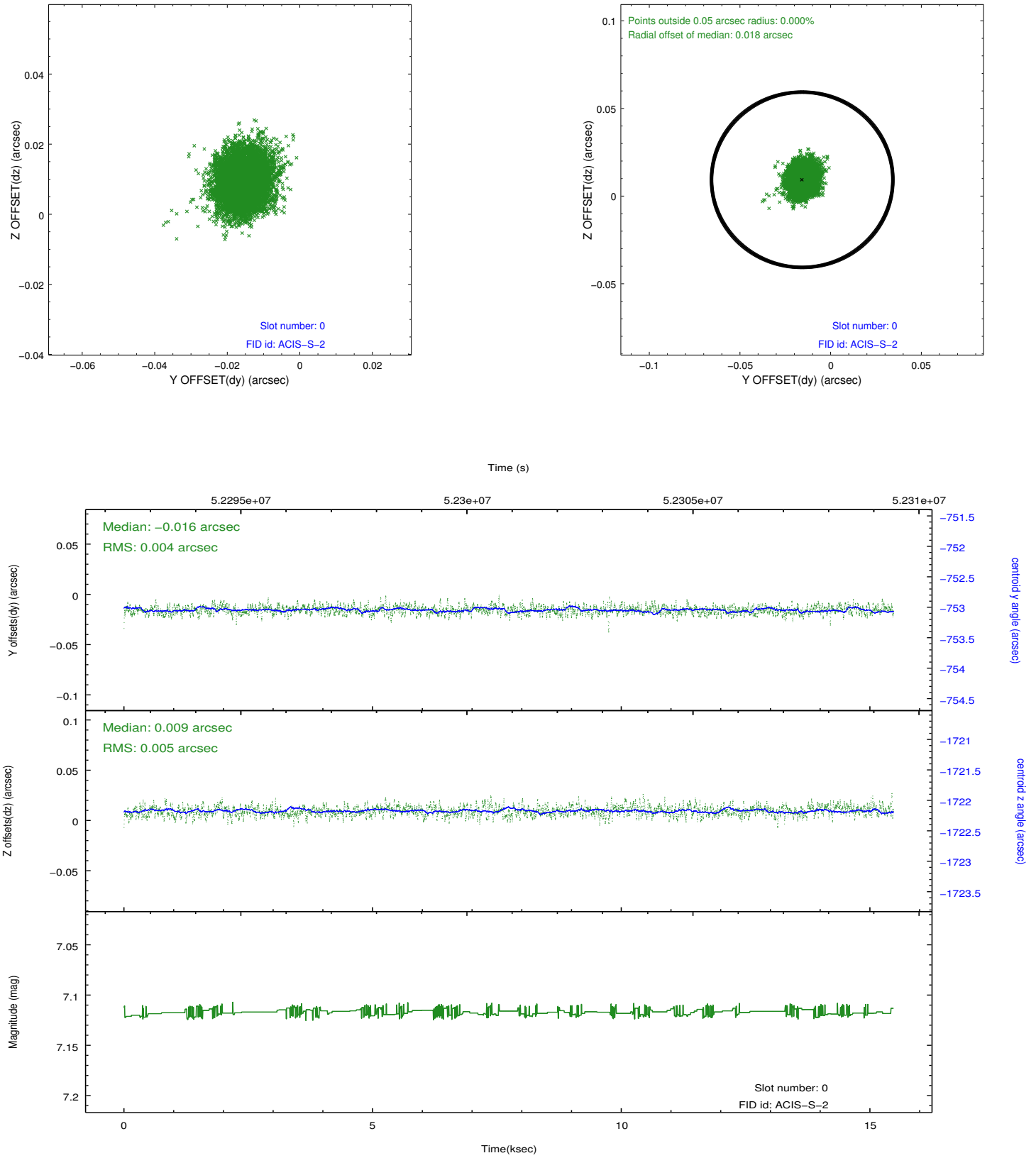


2.4.5 Slot 7

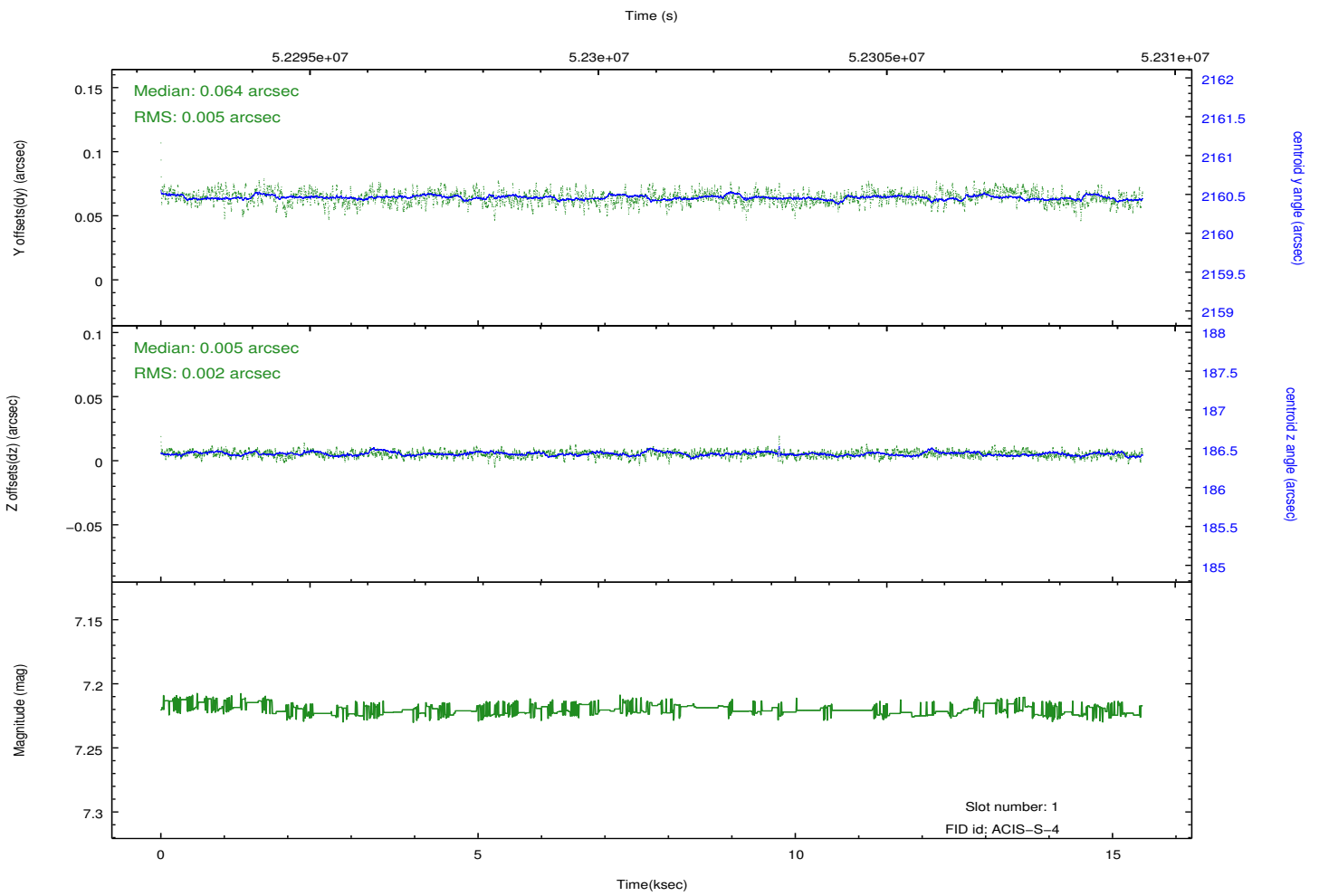
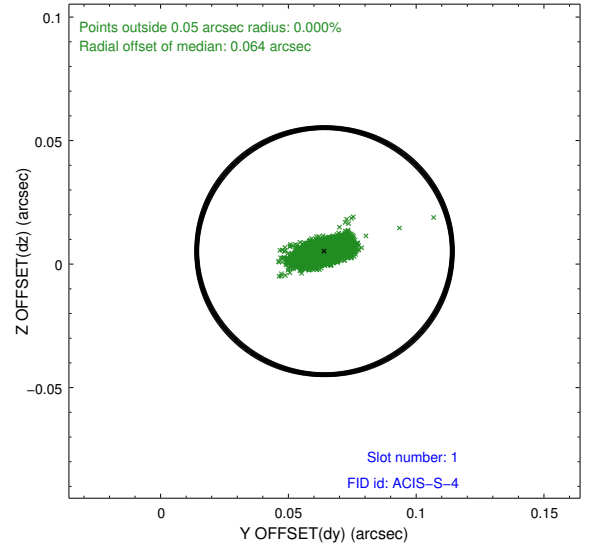
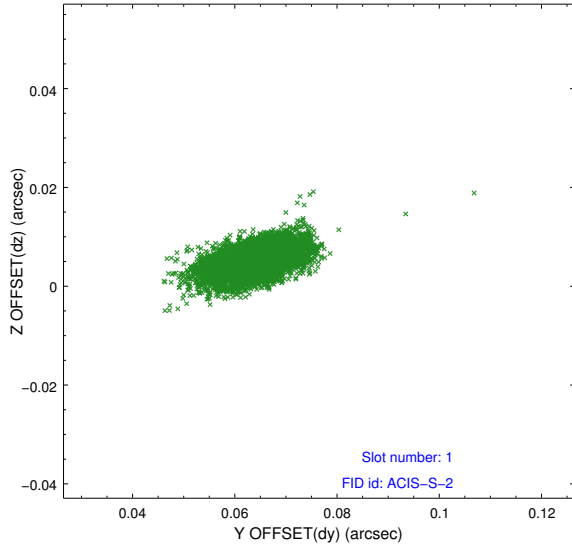


2.5 FID Slots

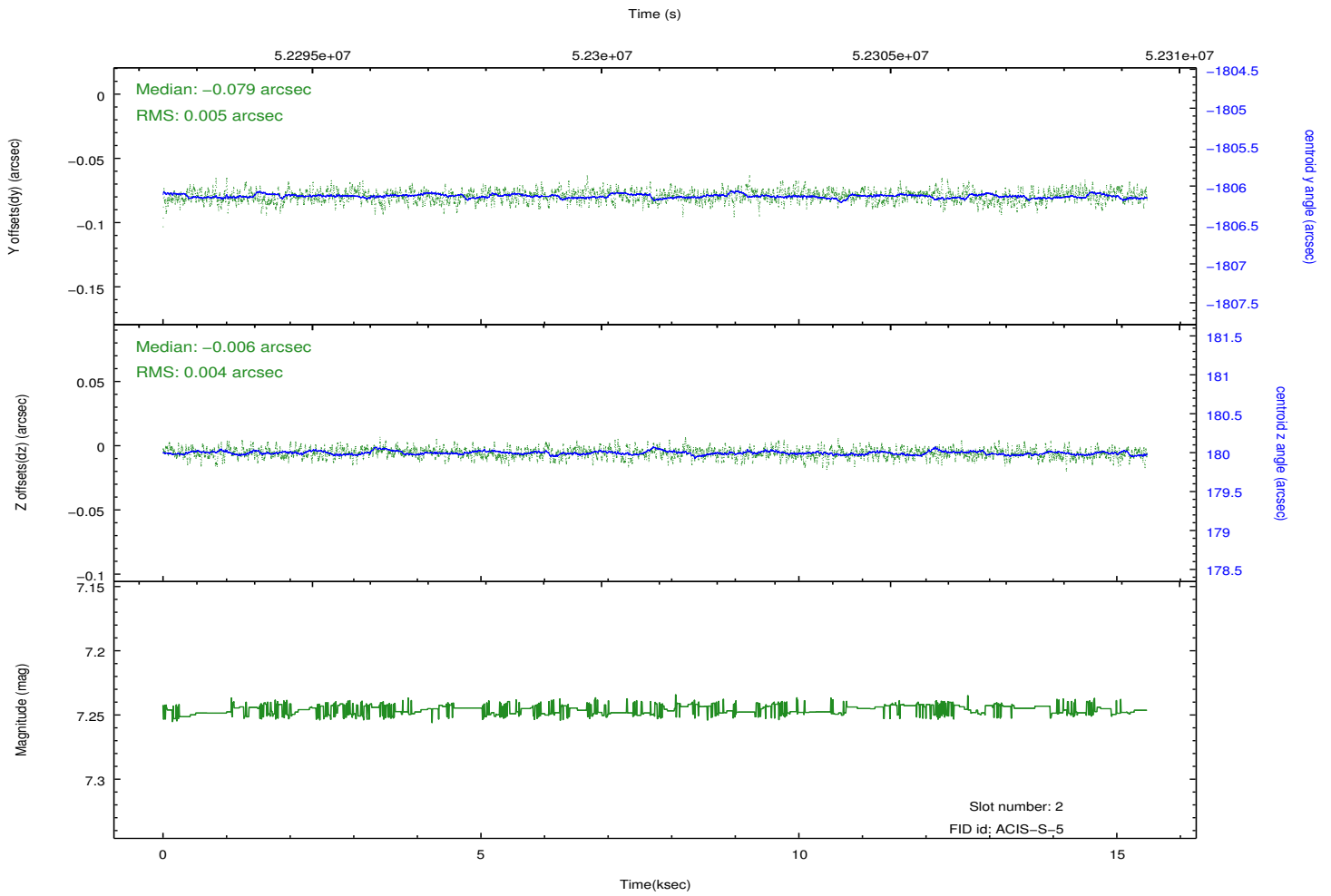
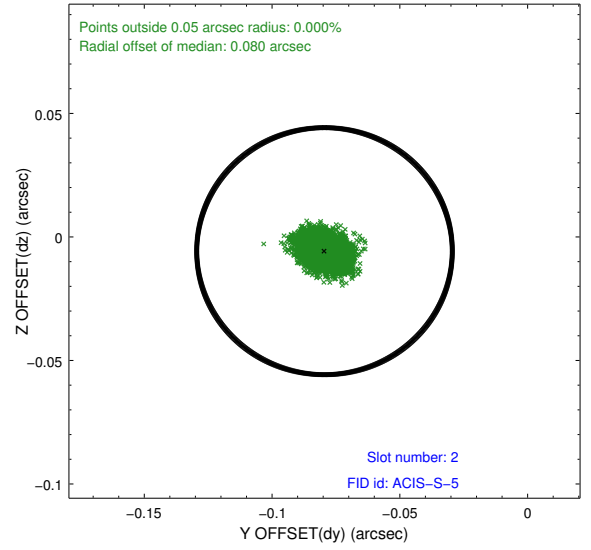
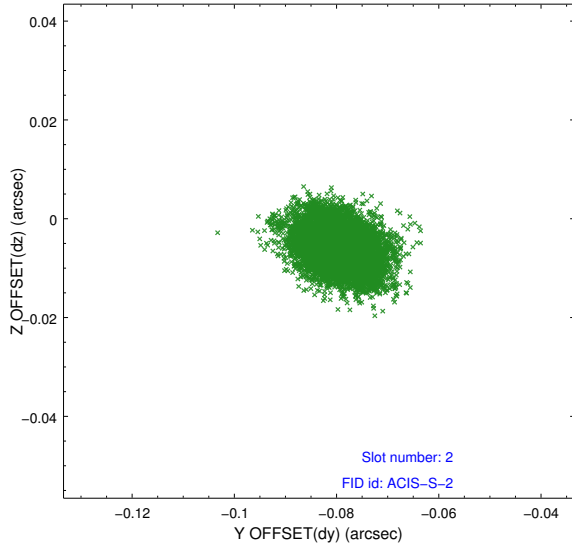
2.5.1 Slot 0



2.5.2 Slot 1

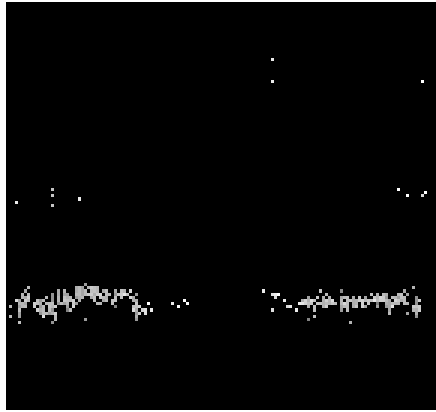


2.5.3 Slot 2

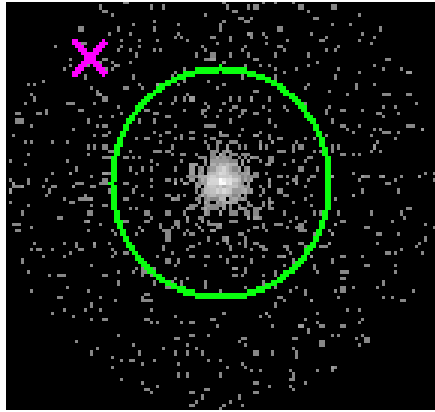


3 Gratings

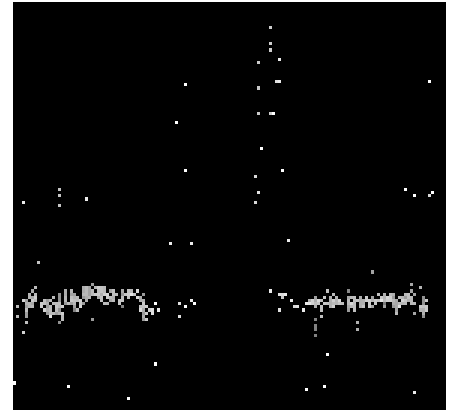
3.1 HEG Arm



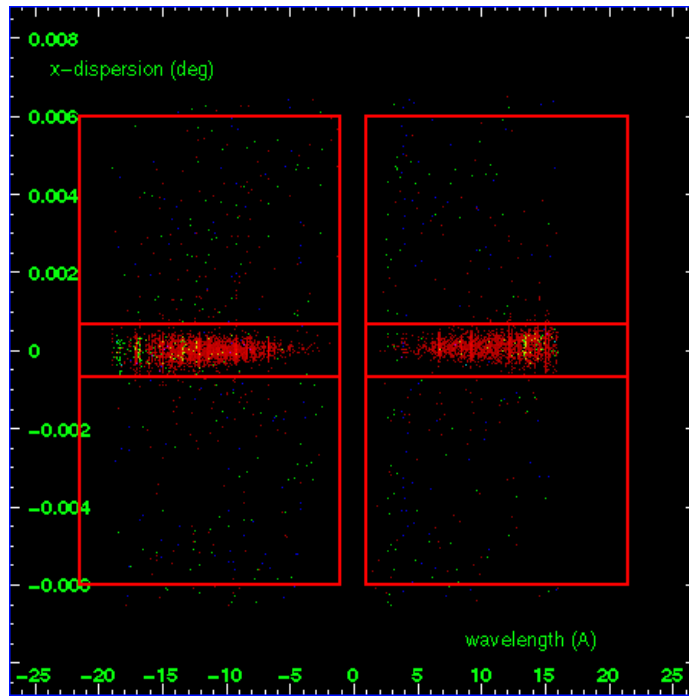
HEG Order Sort 123



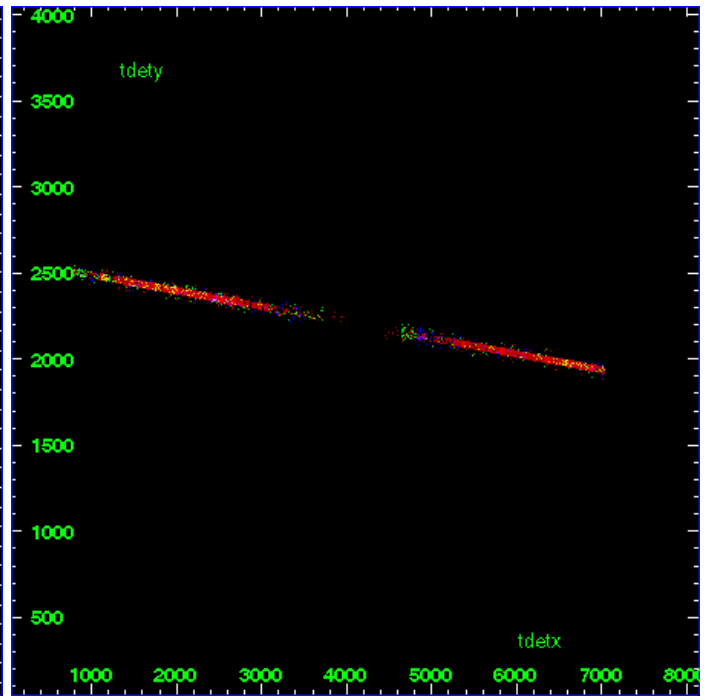
HEG Zero Order



HEG Order Sort ALL

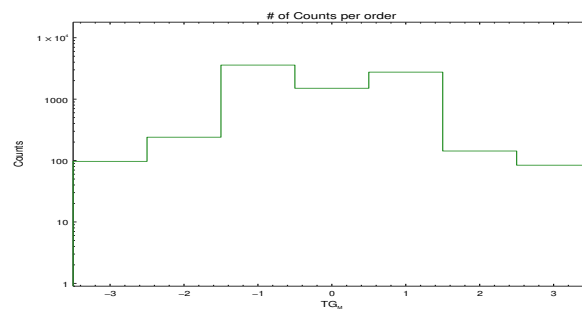


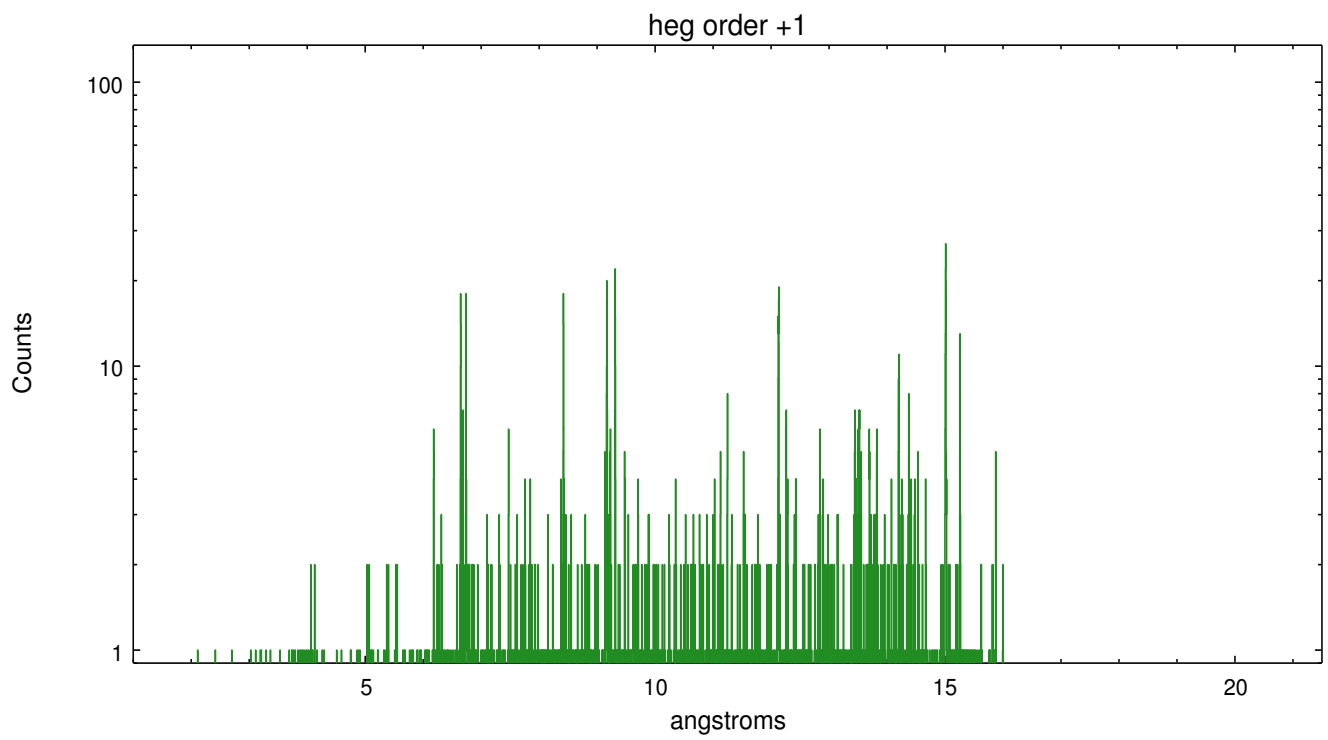
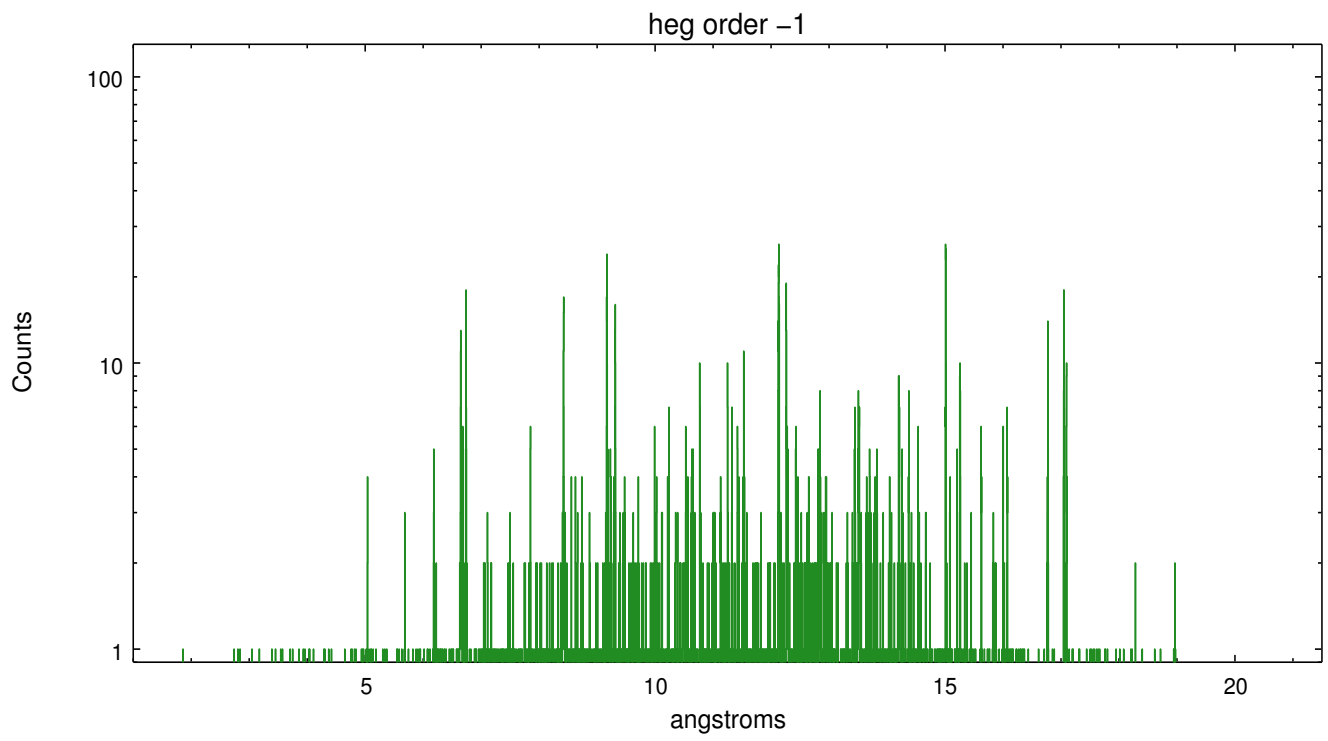
Spot Image HEG



Full Detector HEG

	order -3	order -2	order -1	order 0	order 1	order 2	order 3
Events	97	240	3587	1504	2754	143	84

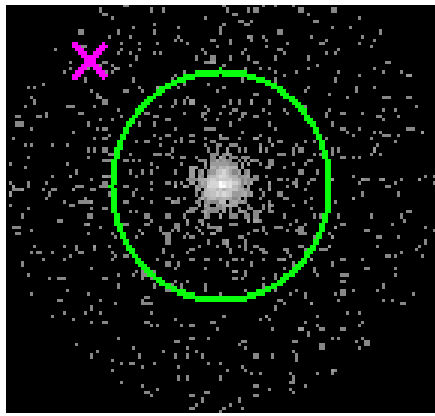




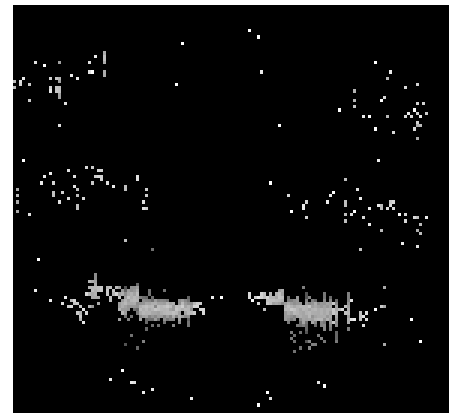
3.2 MEG Arm



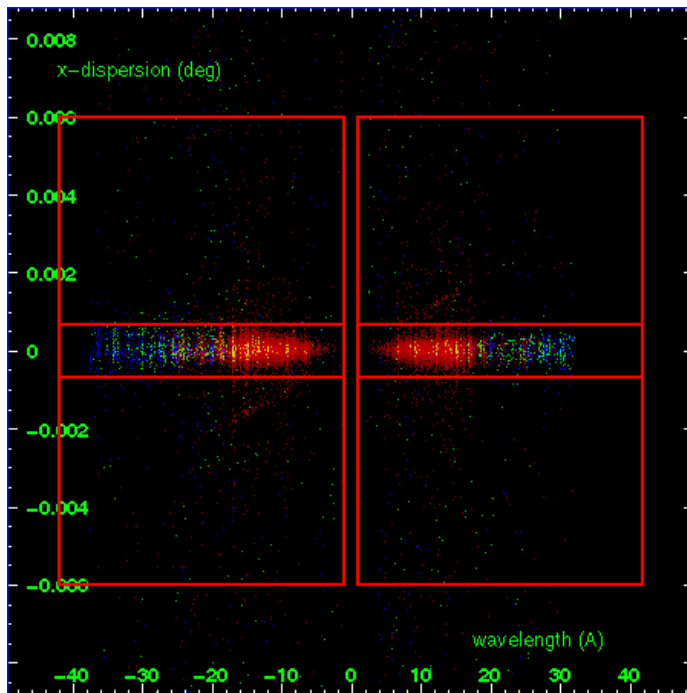
MEG Order Sort 123



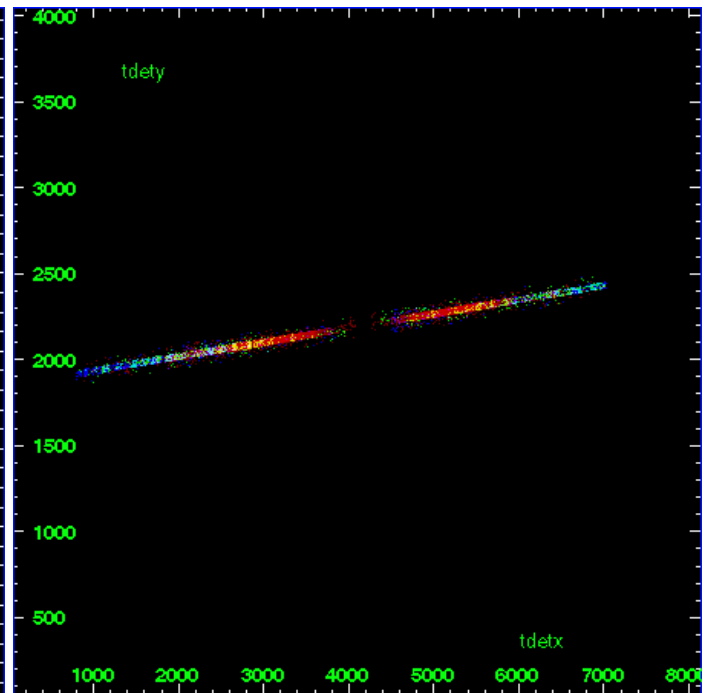
MEG Zero Order



MEG Order Sort ALL

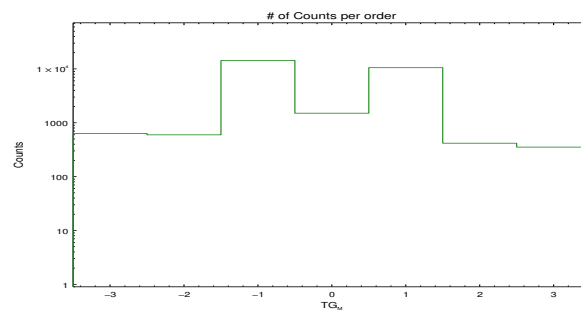


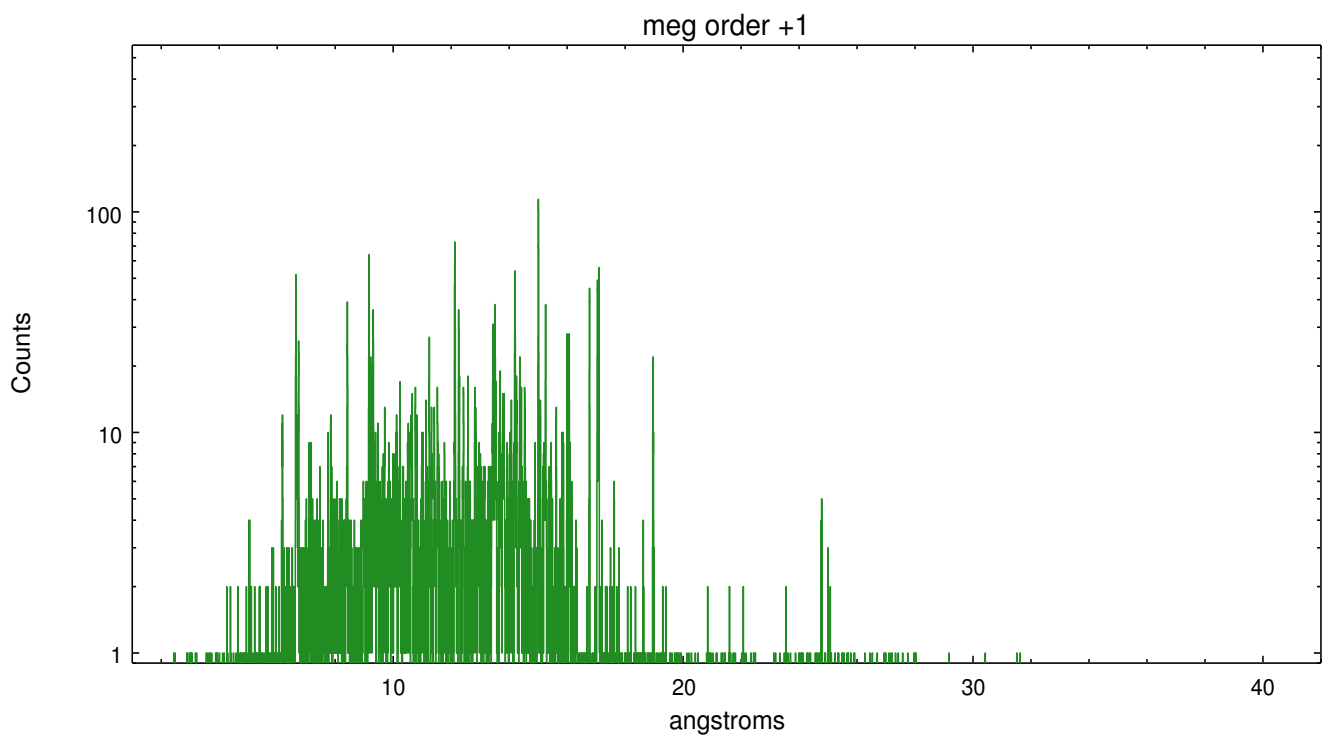
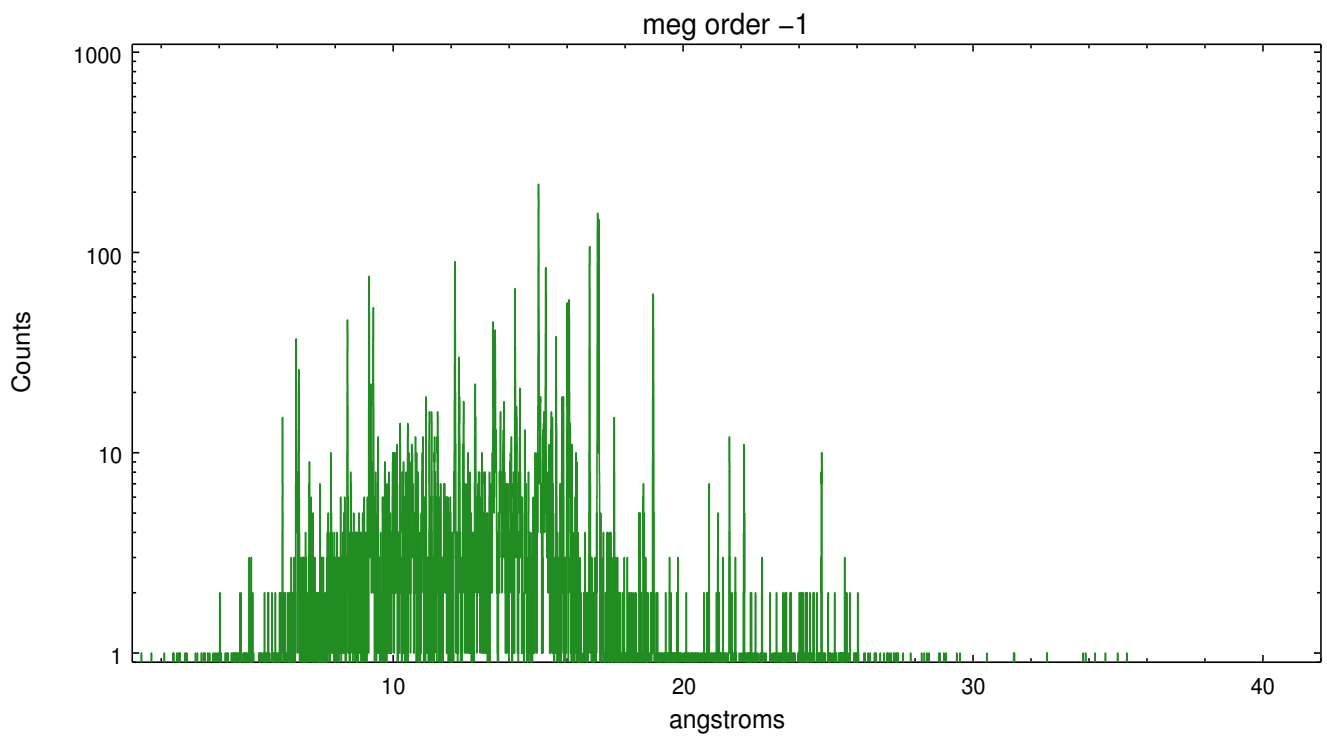
Spot Image MEG



Full Detector MEG

	order -3	order -2	order -1	order 0	order 1	order 2	order 3
Events	631	597	14350	1504	10541	417	353





A Summary

A.1 Status

V&V Scientist	David Huenemoerder
V&V Date (YYYY-MM-DD)	2010.03.26
V&V Edition	1
V&V Disposition and Status	OK
V&V Charge Time	14.758

A.2 Comments