

V&V Reference Report

L2 ASCDS Version : 8.4.3

Observation 12517 - L2 Version 3
Chandra X-Ray Center

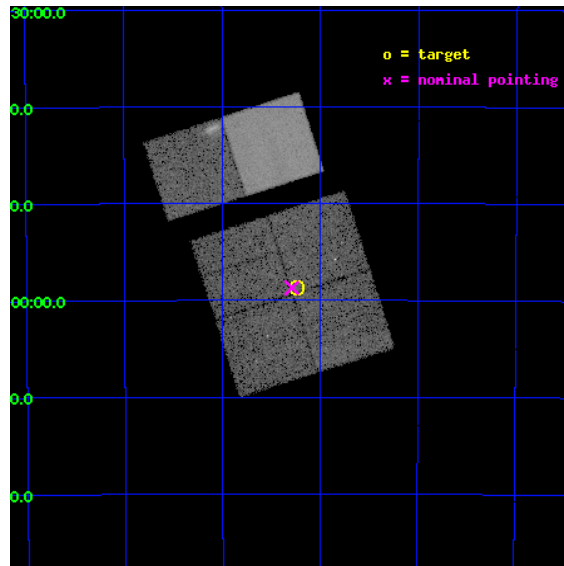
L2 Processing Date : Feb 12 2012

Contents

1	Front	2
2	OBI	3
2.1	OBI	3
2.1.1	Images	3
2.1.2	Bias	3
2.1.3	Parameters	4
2.1.4	Events	4
2.2	Compared Parameters	5
2.3	Aspect	6
2.4	Star Slots	9
2.4.1	Slot 3	9
2.4.2	Slot 4	10
2.4.3	Slot 5	11
2.4.4	Slot 6	12
2.4.5	Slot 7	13
2.5	FID Slots	14
2.5.1	Slot 0	14
2.5.2	Slot 1	15
2.5.3	Slot 2	16
A	Summary	17
A.1	Status	17
A.2	Comments	17

1 Front

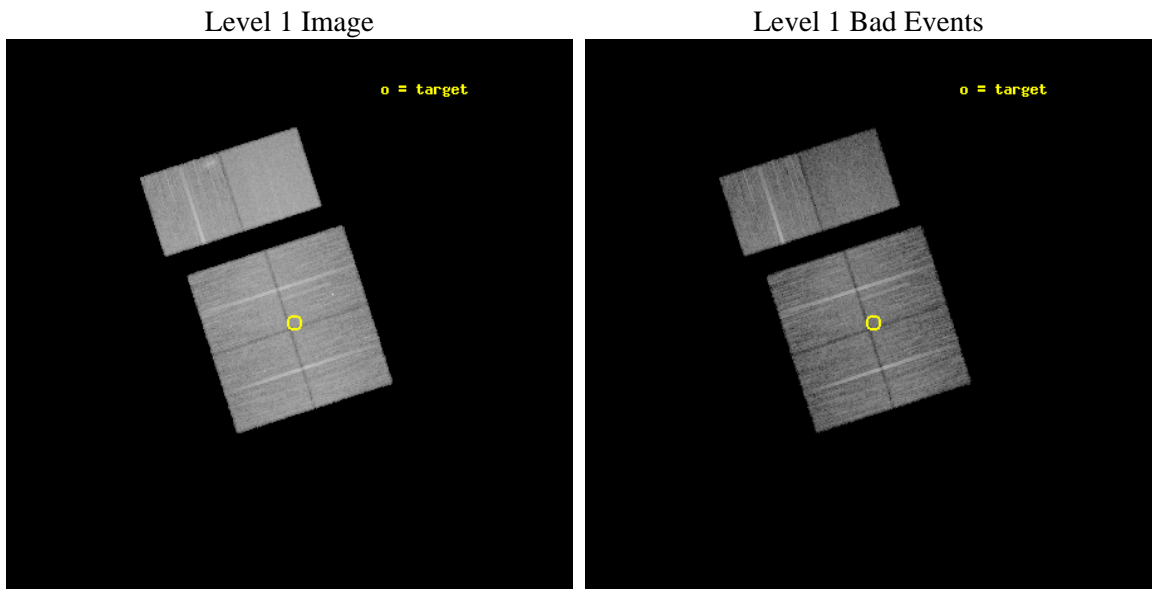
seq_num	401258	Sequence number
obs_id	12517	Observation id
title	Census of the Normal Spiral Arm Region	Proposal title
observer	Dr. John Tomsick	Principal investigator
object	Norma Region	Source name
dtcycle	0	
cycle	P	events from which exps? Prim/Second/Both
ra_targ	249.560362	Observer's specified target RA [deg]
dec_targ	-46.978342	Observer's specified target Dec [deg]
ra_nom	249.57220519451	Nominal RA [deg]
dec_nom	-46.978412613728	Nominal Dec [deg]
roll_nom	342.2173418173	Nominal Roll [deg]
revision	3	Processing version of data
ontime	19756.79992646	Sum of GTIs [s]
livetime	19506.627429674	Livetime [s]
ontime0	19756.79992646	Sum of GTIs [s]
ontime1	19756.79992646	Sum of GTIs [s]
ontime2	19756.79992646	Sum of GTIs [s]
ontime3	19756.79992646	Sum of GTIs [s]
ontime6	19756.79992646	Sum of GTIs [s]
ontime7	19756.79992646	Sum of GTIs [s]
l2events	136725	Number of level 2 events



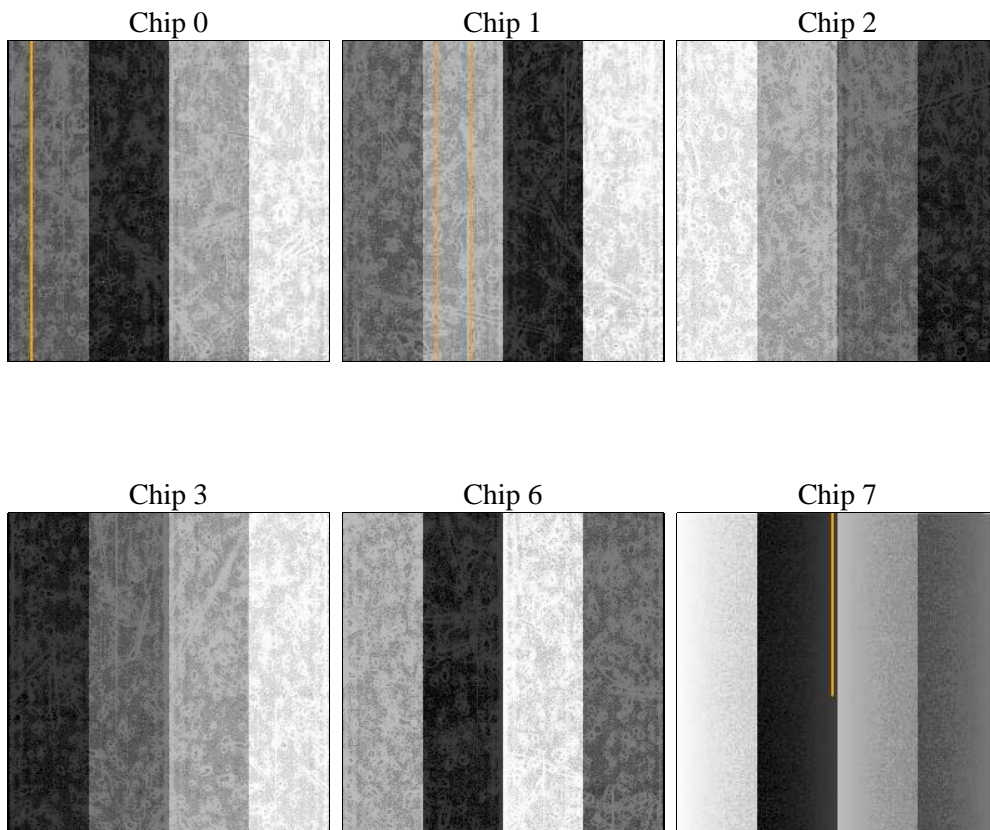
2 OBI

2.1 OBI

2.1.1 Images



2.1.2 Bias



2.1.3 Parameters

obi_num	1	Obi number	sched_exp_time	20000.000000	[s] Scheduled observation exposure time
ascdsver	8.4.3	Processing system revision	ontime	19756.79992646	Sum of GTIs [s]
caldsver	4.4.7	 	ontime0	19756.79992646	Sum of GTIs [s]
date	2012-02-12T10:57:17	Date and time of file creation	ontime1	19756.79992646	Sum of GTIs [s]
revision	3	Processing version of data	ontime2	19756.79992646	Sum of GTIs [s]
			ontime3	19756.79992646	Sum of GTIs [s]
			ontime6	19756.79992646	Sum of GTIs [s]
			ontime7	19756.79992646	Sum of GTIs [s]
			l1events	752412	Number of level 1 events

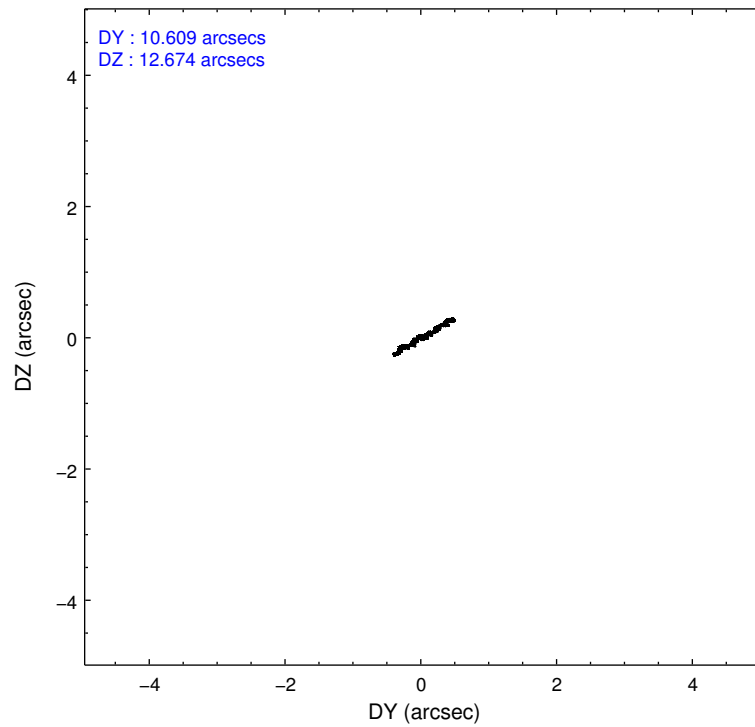
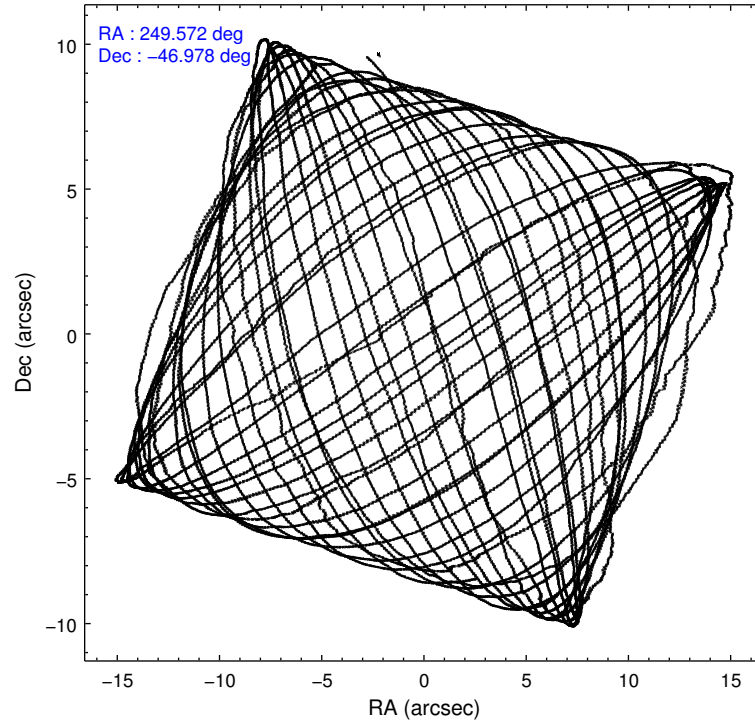
2.1.4 Events

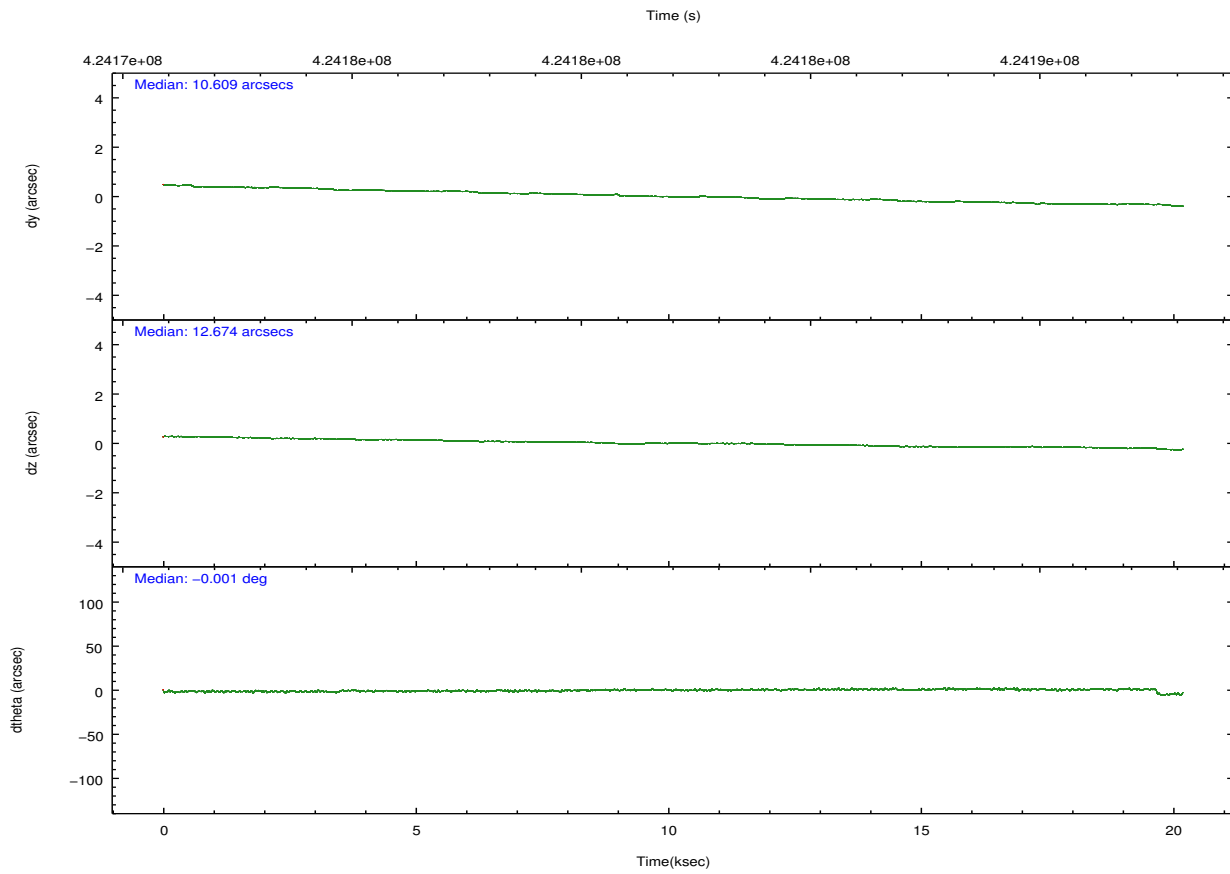
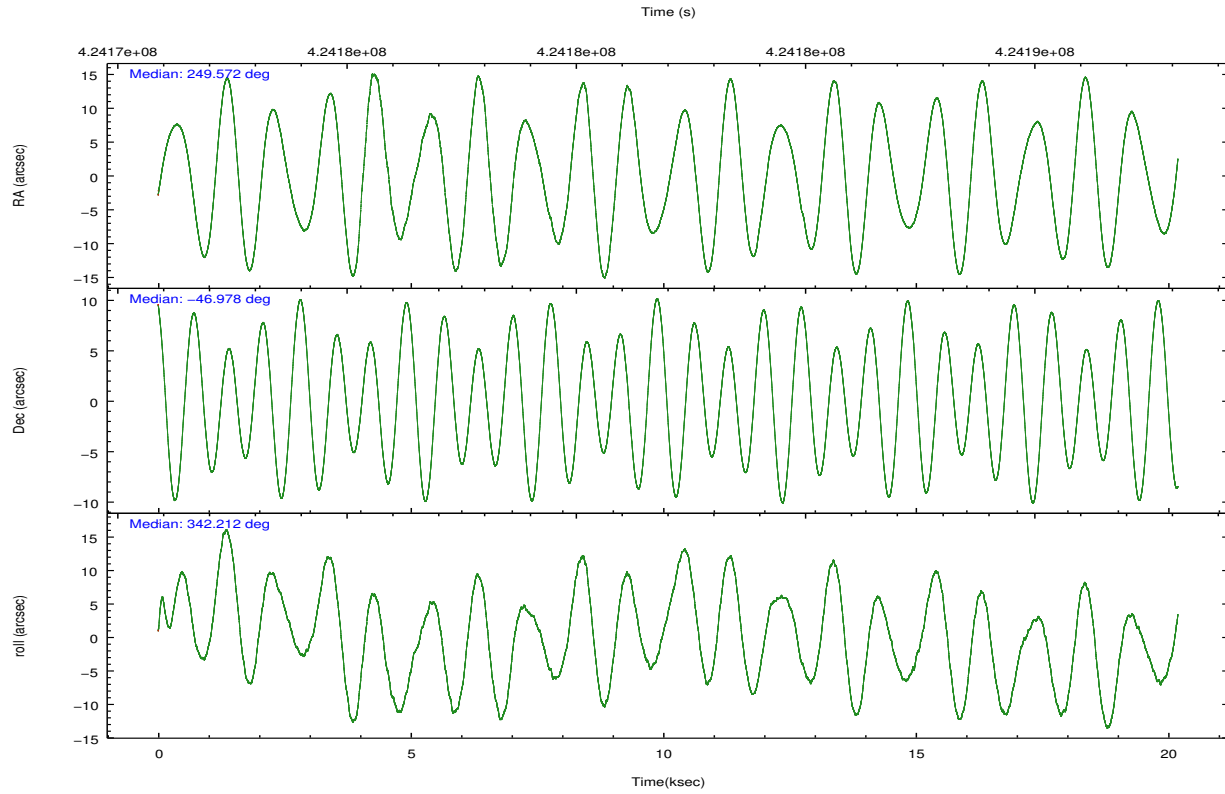
	ccd 0	ccd 1	ccd 2	ccd 3	ccd 6	ccd 7		ccd 0	ccd 1	ccd 2	ccd 3	ccd 6	ccd 7
level 1 events	110560	114264	124258	118572	129335	155423	grade 0 events	5706	6169	5933	6548	6978	6551
rejected events	95643	98221	109449	103214	111645	84710		5%	5%	4%	5%	5%	4%
rejected %	86%	85%	88%	87%	86%	54%	grade 1 events	65	59	67	87	78	190
								0%	0%	0%	0%	0%	0%
							grade 2 events	3392	3446	3291	2967	3743	14476
								3%	3%	2%	2%	2%	9%
							grade 3 events	1518	1557	1406	1543	1620	6127
								1%	1%	1%	1%	1%	3%
							grade 4 events	1413	1586	1482	1540	1610	6129
								1%	1%	1%	1%	1%	3%
							grade 5 events	5002	5361	4715	5723	5839	15412
								4%	4%	3%	4%	4%	9%
							grade 6 events	2893	3288	2704	2765	3748	37451
								2%	2%	2%	2%	2%	24%
							grade 7 events	90571	92798	104660	97399	105719	69087
								81%	81%	84%	82%	81%	44%

2.2 Compared Parameters

Parameter	Planned	Actual	Parameter	Planned	Actual
Instrument	ACIS	ACIS	Obspar format version number	7	7
Detector	ACIS-012367	ACIS-012367	Obspar file type	PREDICTED	ACTUAL
Grating	NONE	NONE	Obspar update status	NONE	UPDATED
Data mode	VFAINT	VFAINT	CCD I0 on	Y	Y
Observation mode	POINTING	POINTING	CCD I1 on	Y	Y
[deg] Pointing RA	249.532851	249.5722051945131	CCD I2 on	Y	Y
[deg] Pointing Dec	-46.984328	-46.978412613728	CCD I3 on	Y	Y
[deg] Pointing Roll	341.979882	342.217341817297	CCD S0 on	N	N
[mm] SIM focus pos	-0.782348	-0.7809083437167272	CCD S1 on	N	N
[mm] SIM defocus	0	0.001439871863259334	CCD S2 on	O2	Y
[mm] SIM translation stage pos	-233.592463	-233.5874344608287	CCD S3 on	O1	Y
[mm] SIM translation stage offset	0	-0.005018542100998502	CCD S4 on	N	N
[s] Observation start time (MET)	424172084.184000	424171708.69531	CCD S5 on	N	N
Observation start date	2011-06-11T09:33:38	2011-06-11T09:28:28	Number of optional ACIS chips dropped	0	0
[s] Observation end time (MET)	424192084.184000	424192218.43387	On-chip summing requested	N	N
Observation end date	2011-06-11T15:06:58	2011-06-11T15:10:18	Subarray requested	NONE	NONE
Read mode	TIMED	TIMED	Alternating exposures requested	N	N
			[s] Primary exposure time	0.000000	3.2

2.3 Aspect



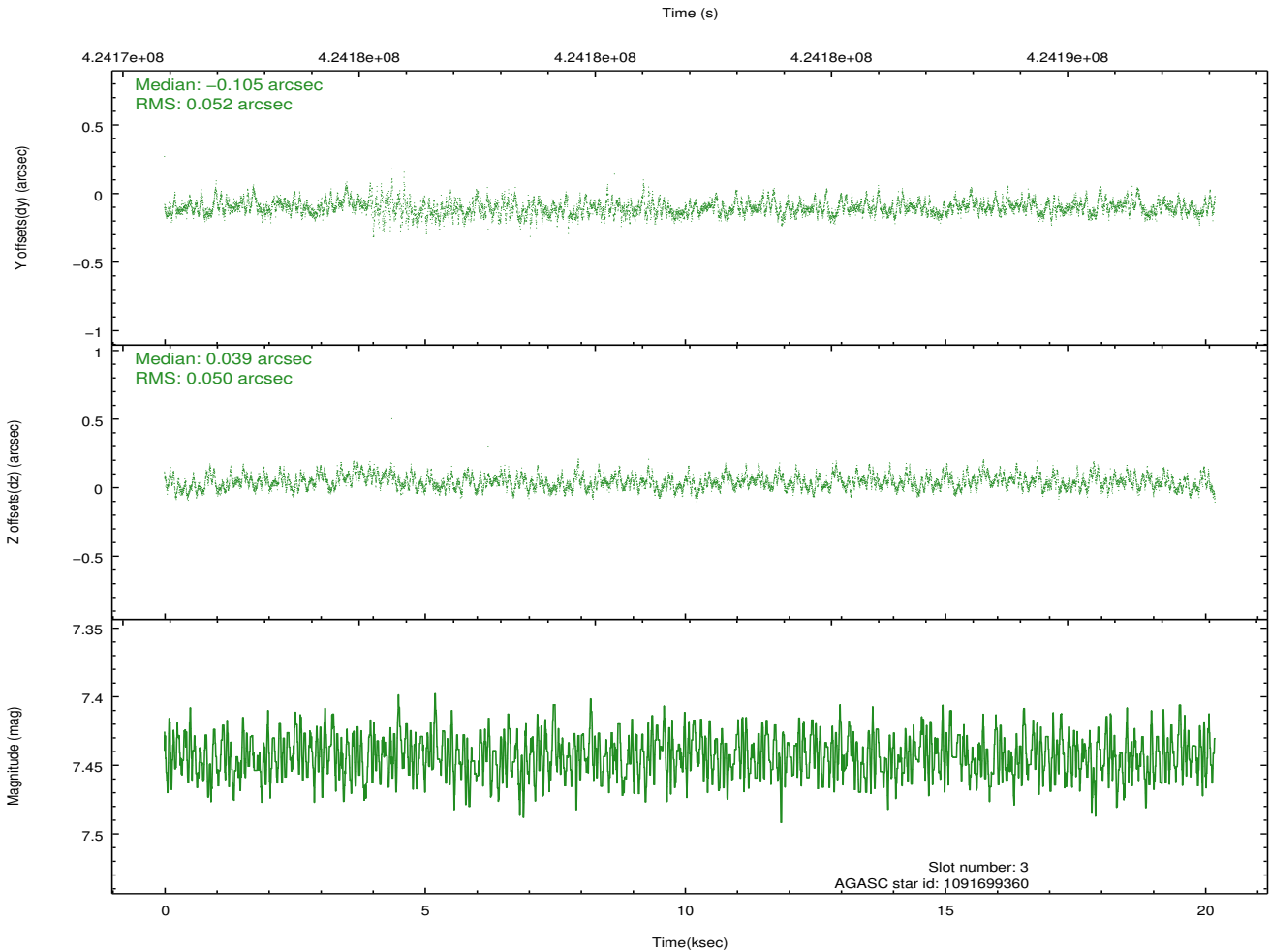
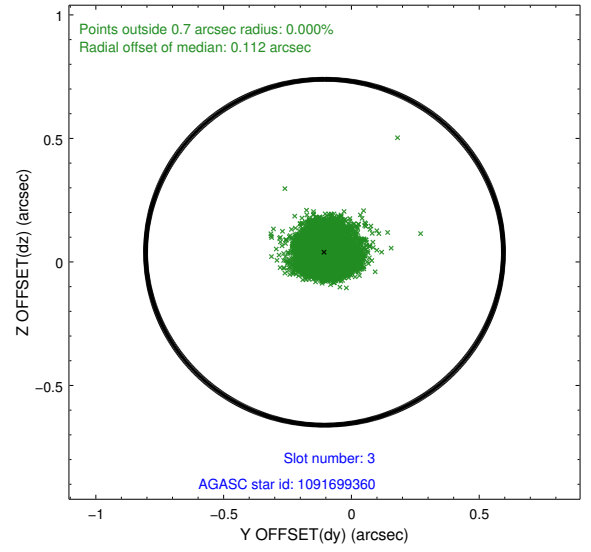
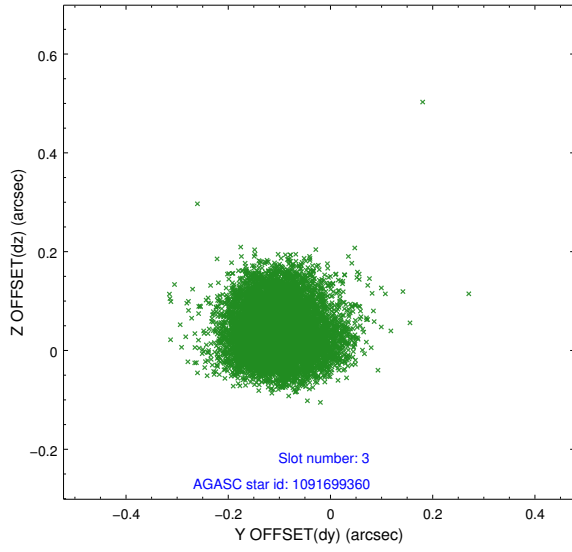


Slot Statistics

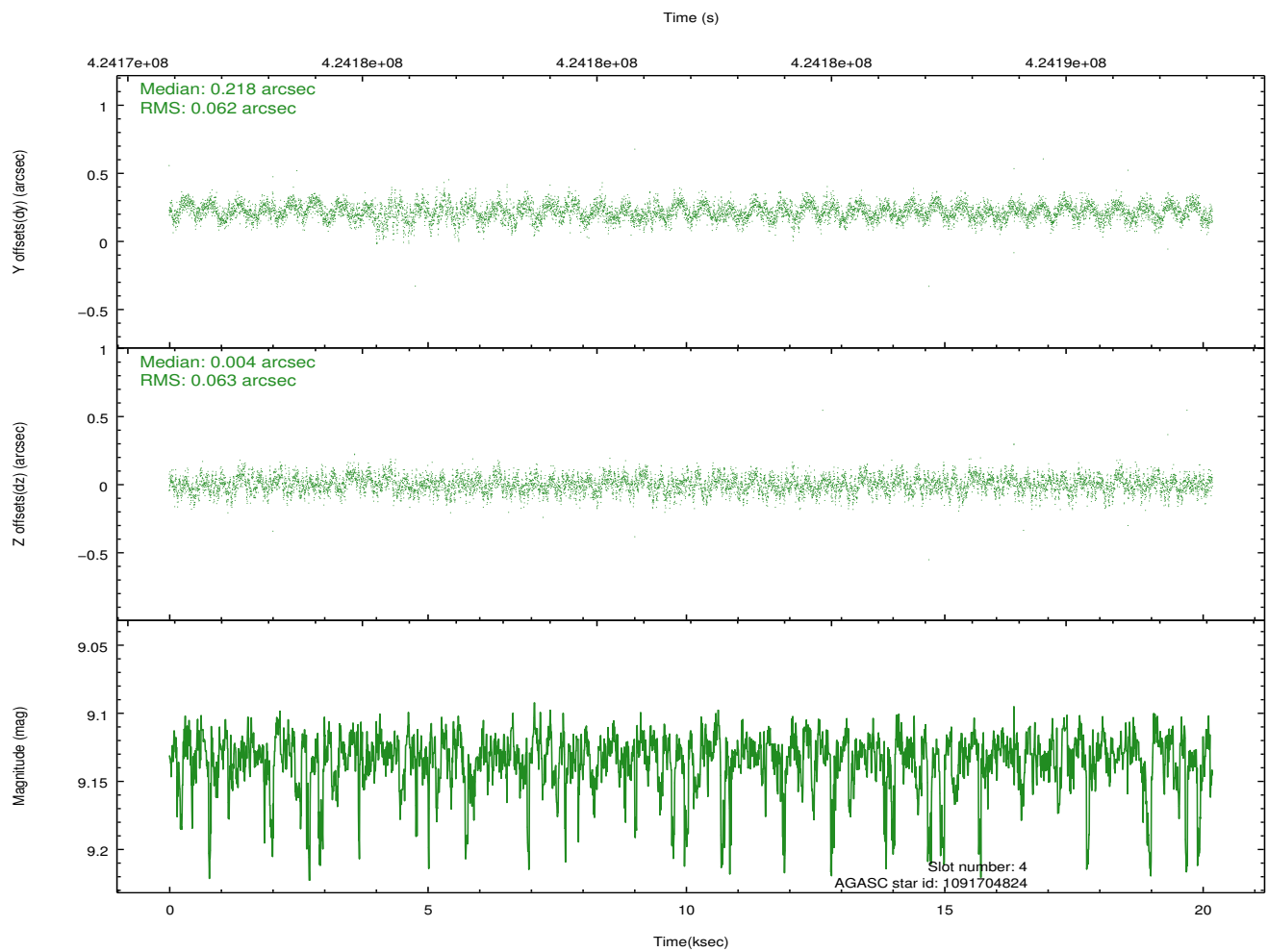
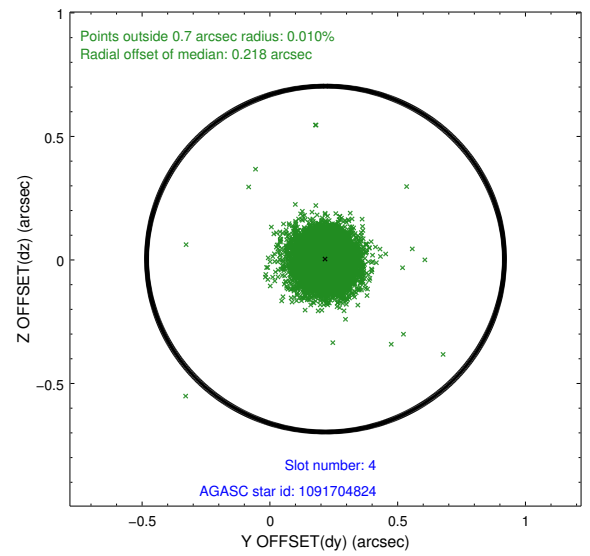
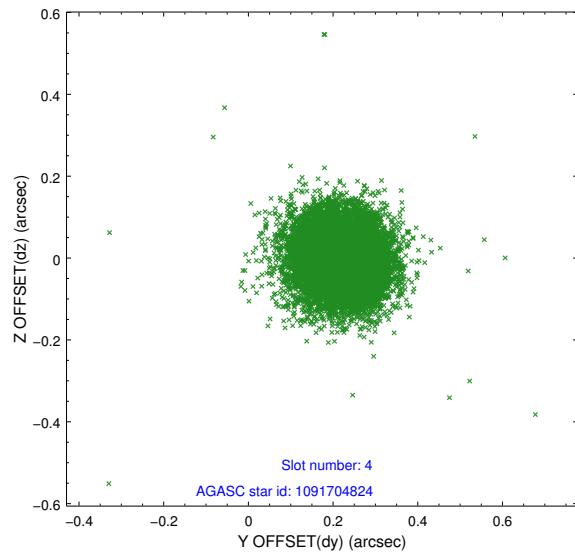
slot	status	id	mag	n_pts	med_dy	med_dz	dr1	dr2	ra	dec	mean_y	mean_z
0	FID	ACIS-I-2	7.05	4924	-0.085	-0.088	0.014	0.024	0.000000	0.000000	-765.33	-842.66
1	FID	ACIS-I-4	7.09	4924	0.215	0.076	0.010	0.020	0.000000	0.000000	2148.99	1063.52
2	FID	ACIS-I-5	7.14	4925	-0.230	0.082	0.013	0.021	0.000000	0.000000	-1819.02	1061.68
3	GUIDE	1091699360	7.44	9850	-0.105	0.039	0.077	0.124	248.660725	-47.004364	-2009.57	-742.10
4	GUIDE	1091704824	9.13	9839	0.218	0.004	0.092	0.146	249.173141	-47.336759	-440.81	-1479.73
5	GUIDE	1091705016	7.83	9849	-0.255	0.031	0.064	0.107	249.888030	-47.558250	1460.69	-1699.41
6	GUIDE	1091709408	9.21	9845	0.171	-0.092	0.084	0.138	249.304466	-47.312562	-163.40	-1296.88
7	GUIDE	1091709800	9.16	9843	-0.032	0.018	0.093	0.151	249.801955	-47.310212	989.05	-914.52

2.4 Star Slots

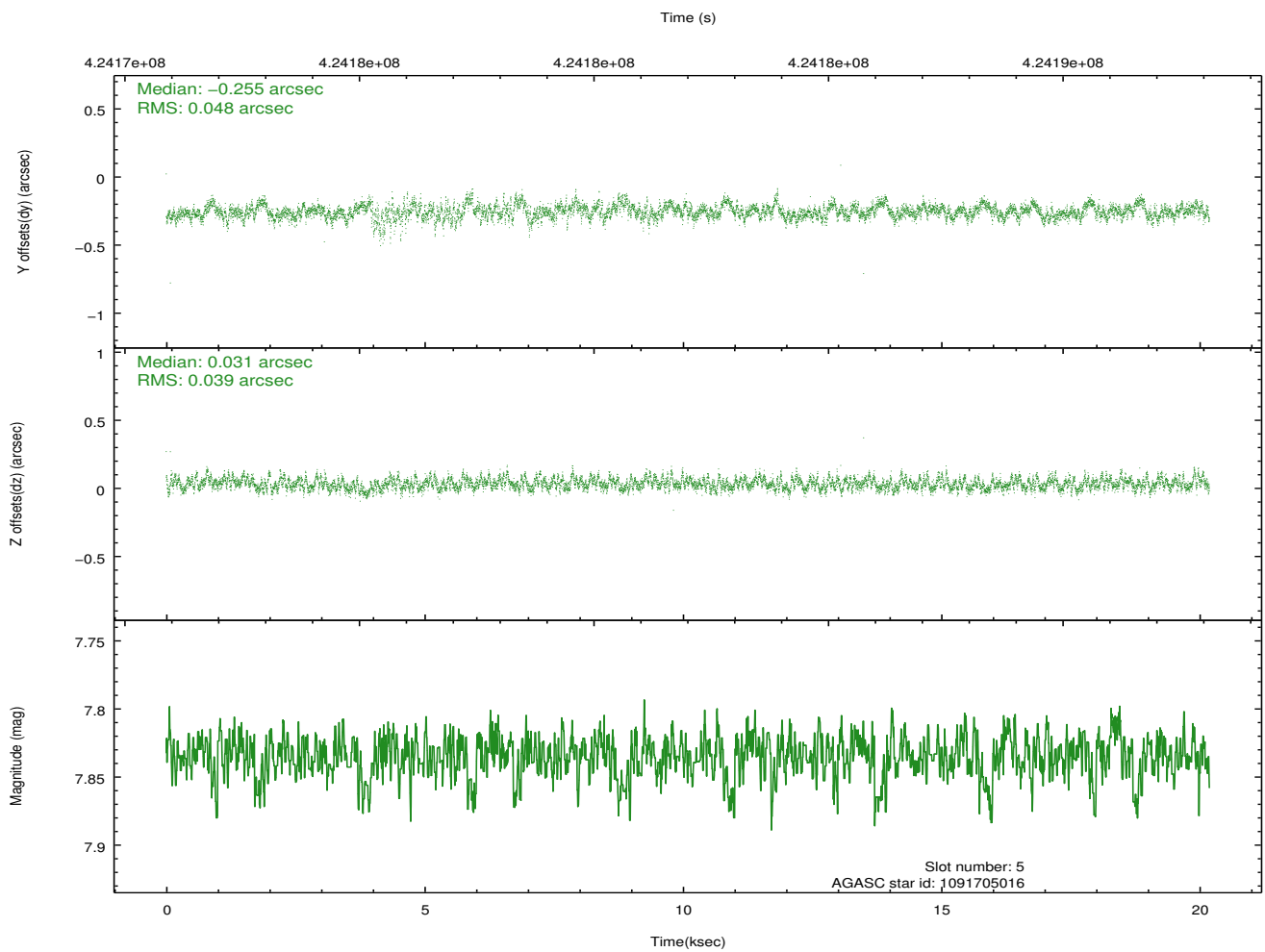
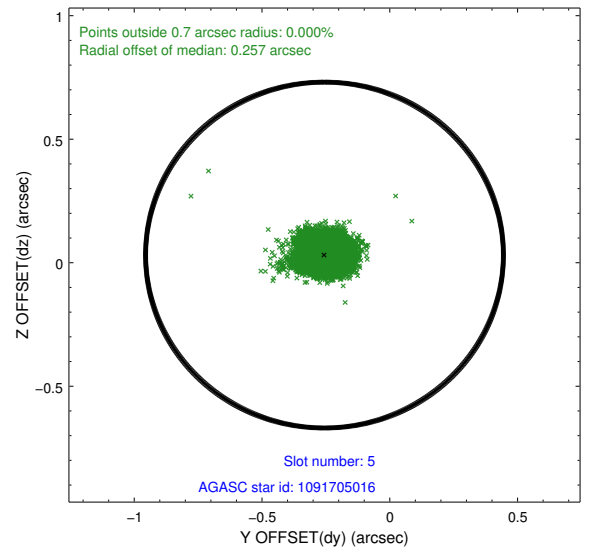
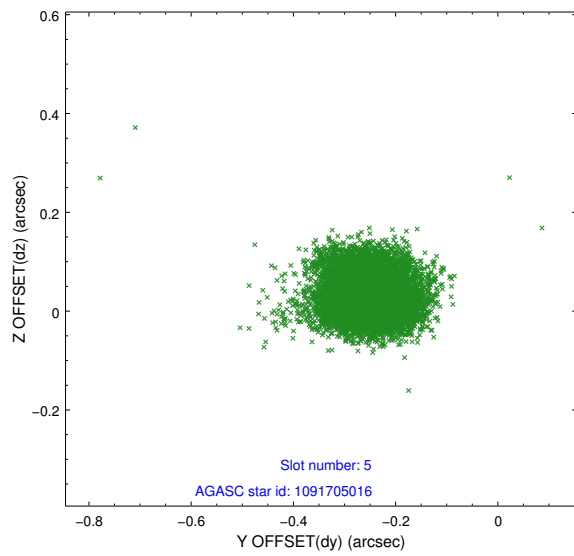
2.4.1 Slot 3



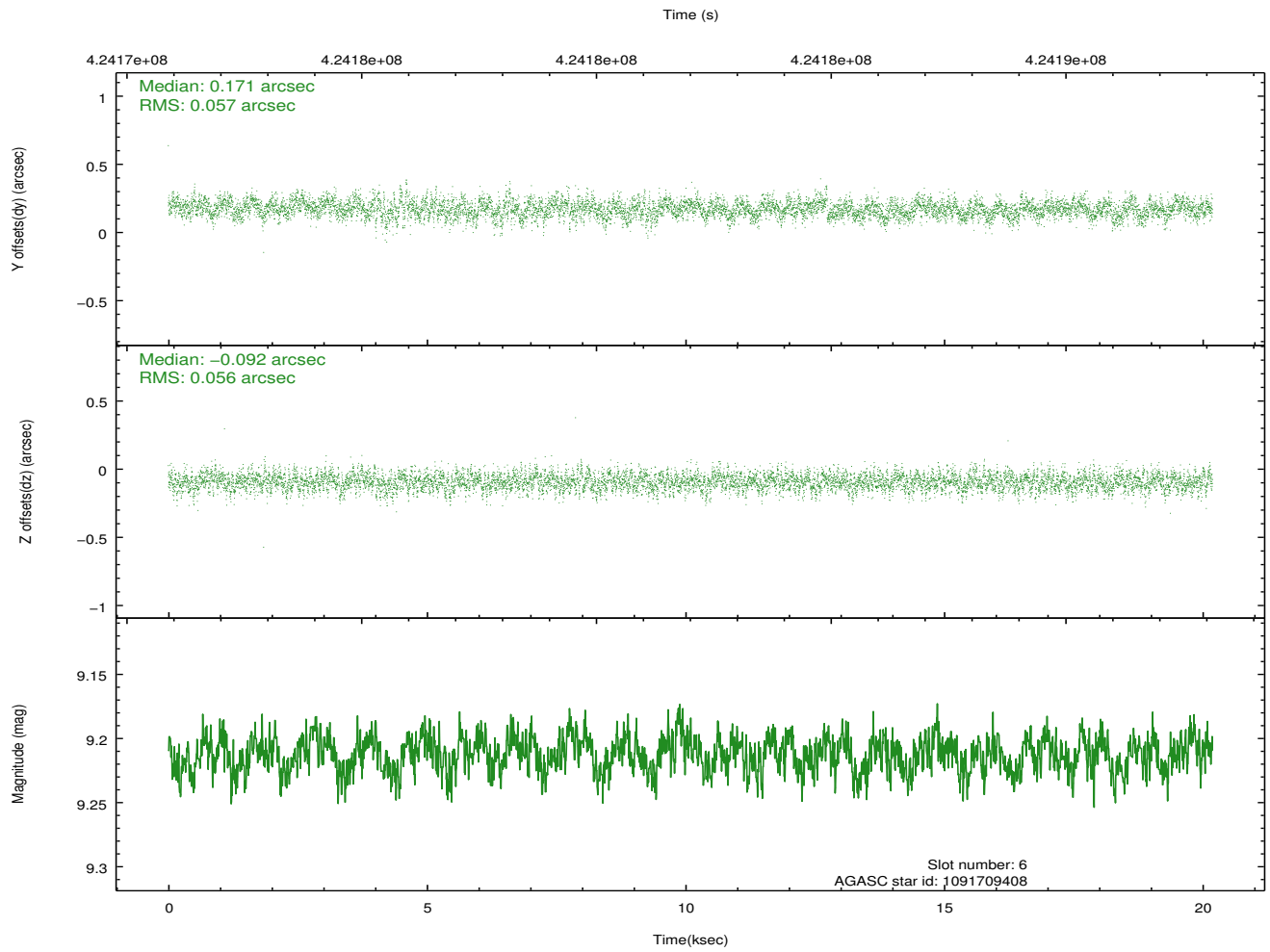
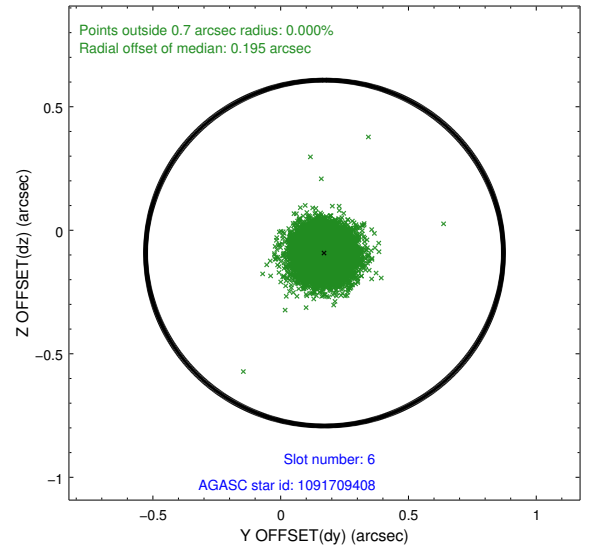
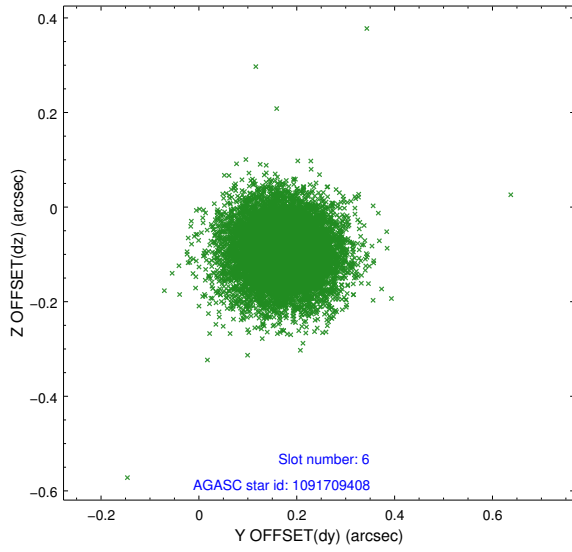
2.4.2 Slot 4



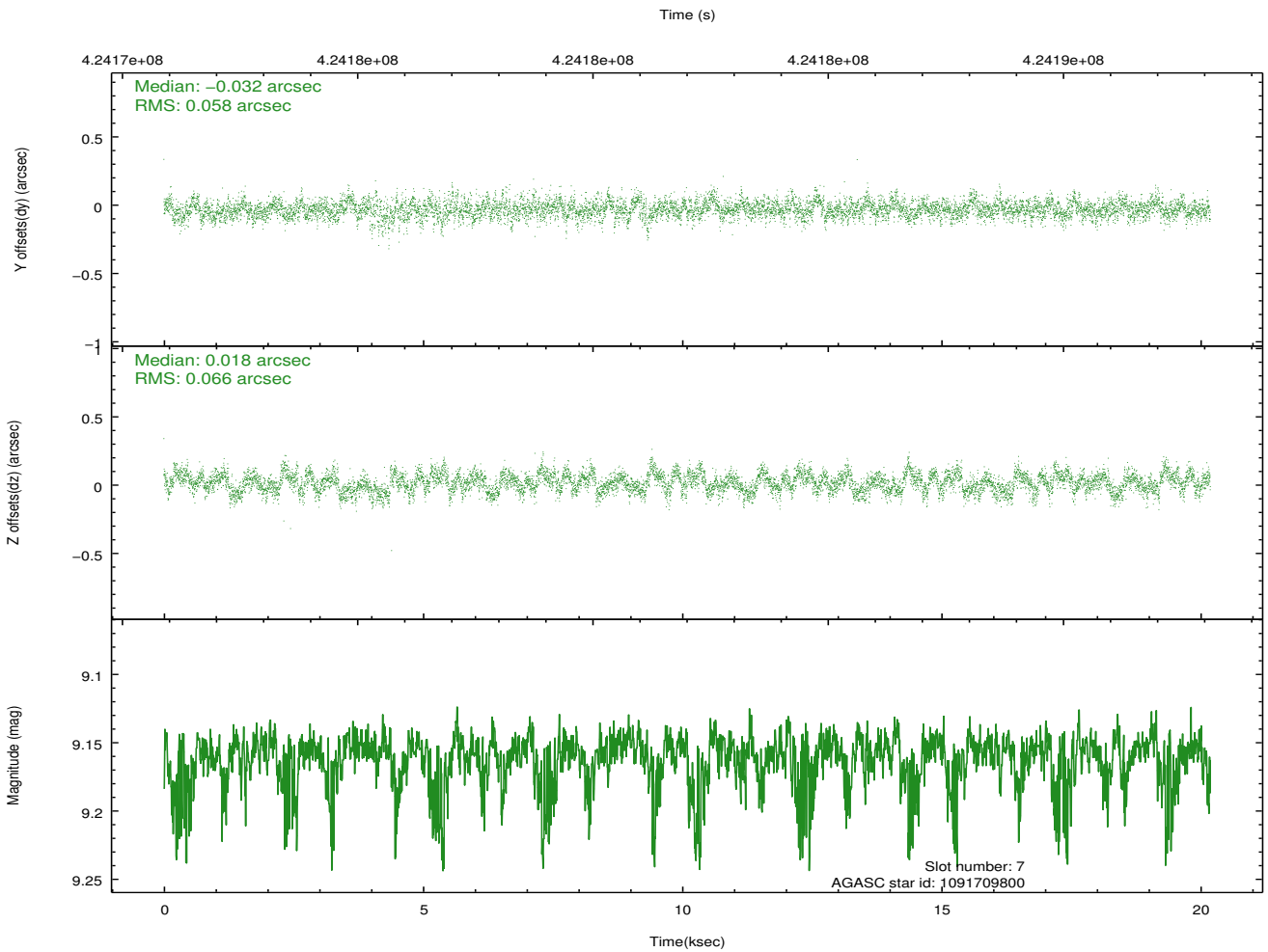
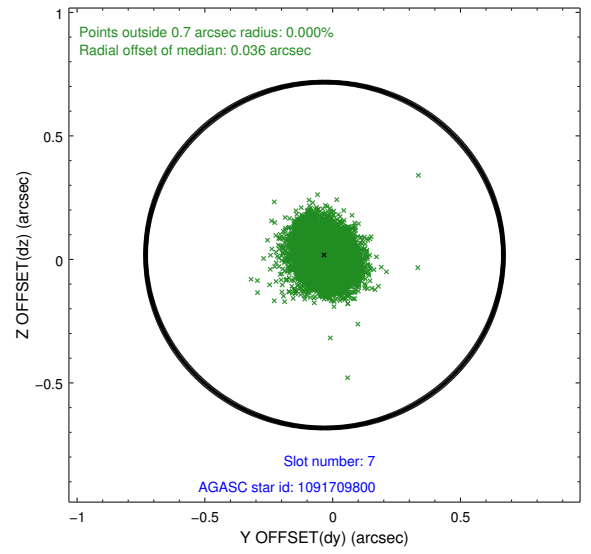
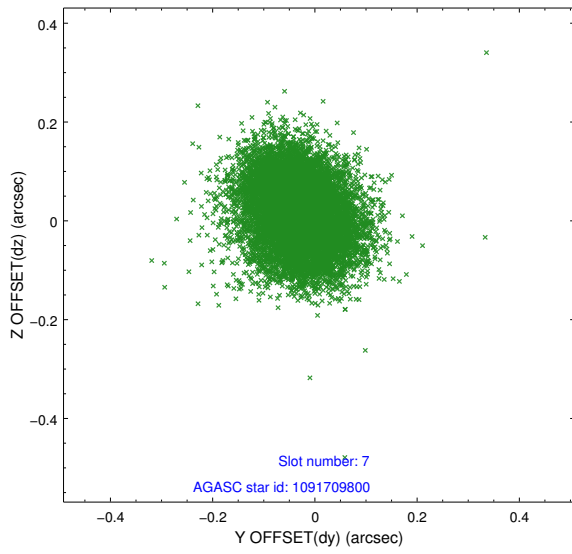
2.4.3 Slot 5



2.4.4 Slot 6

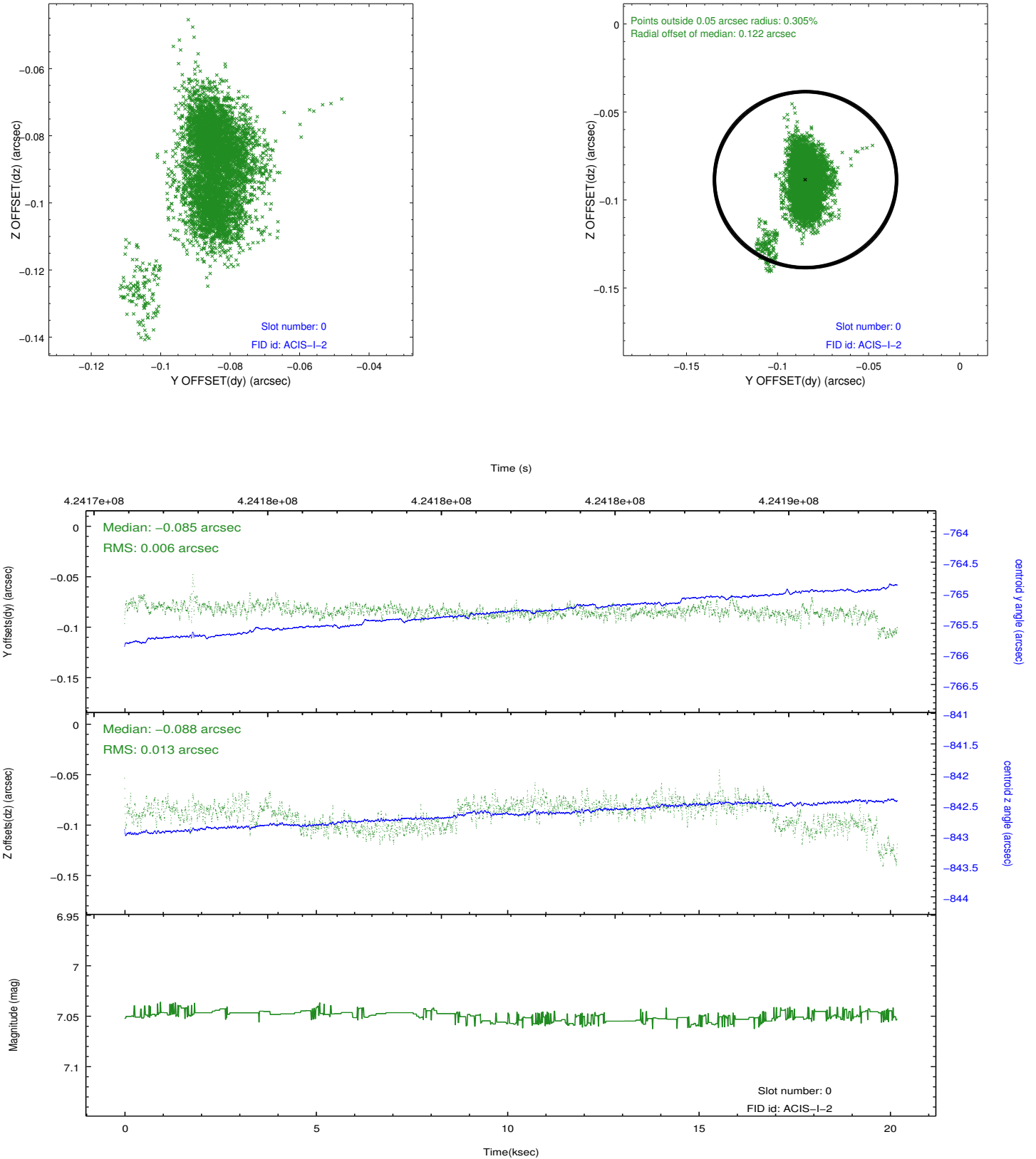


2.4.5 Slot 7

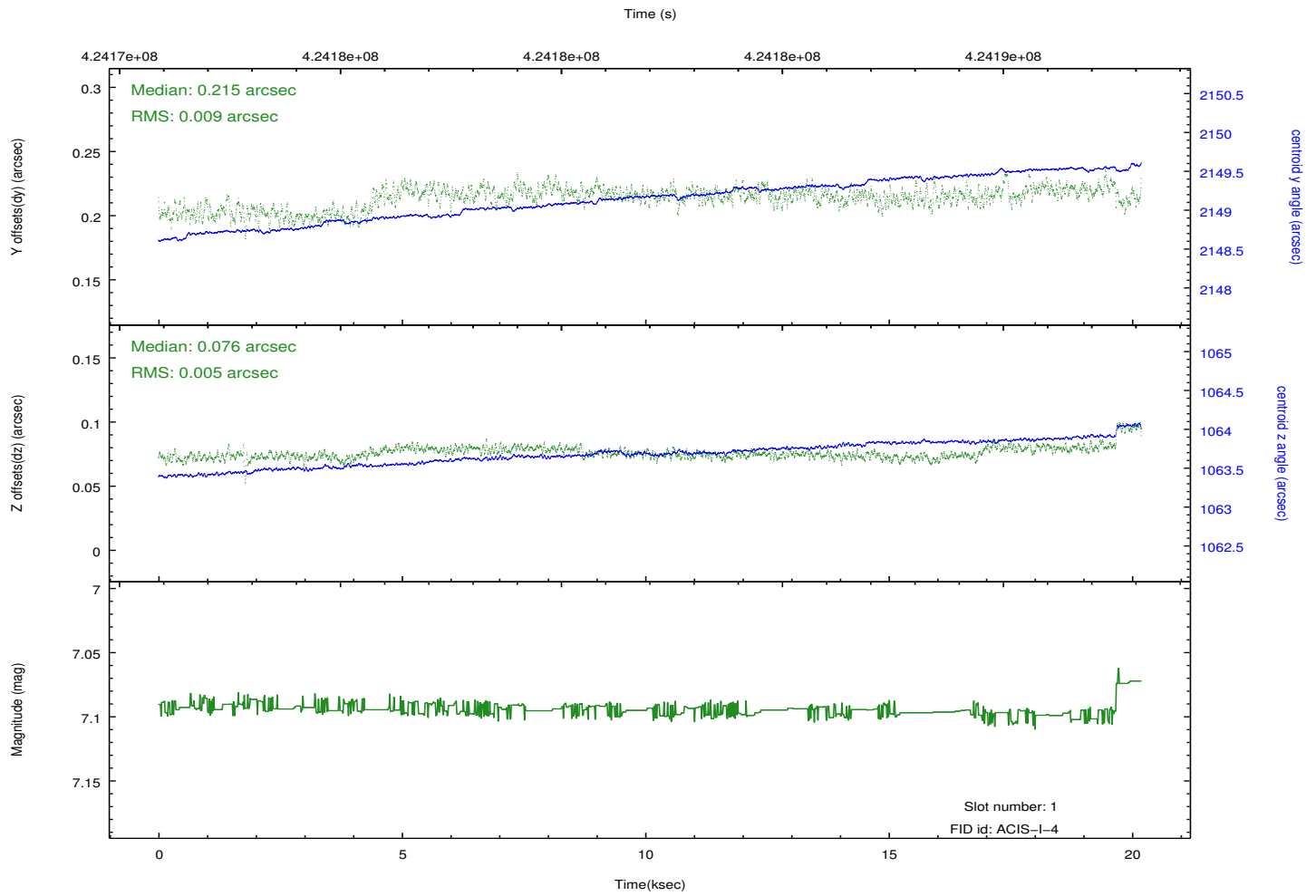
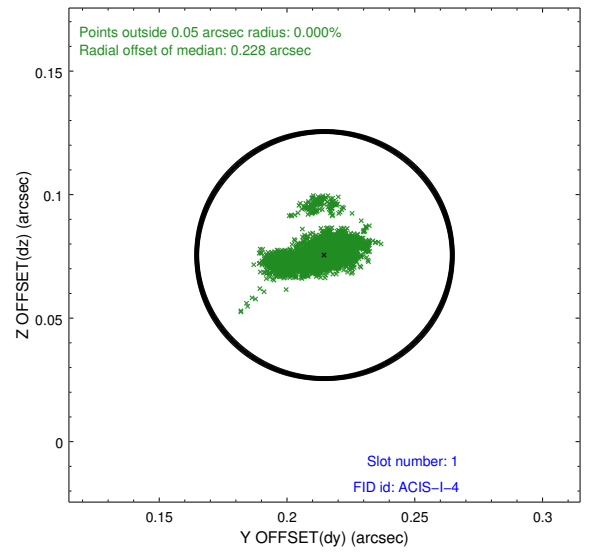
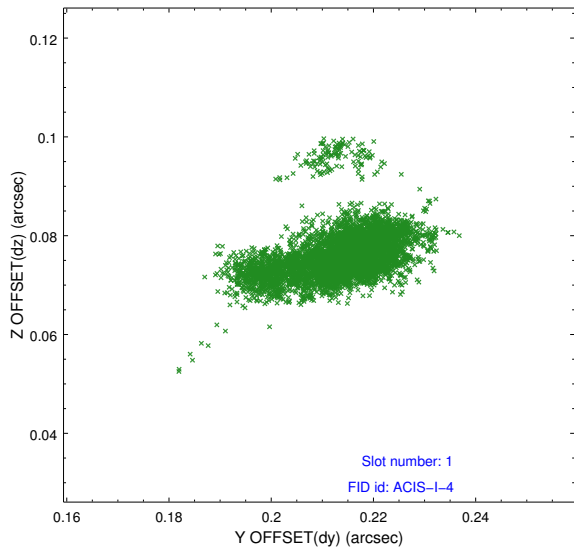


2.5 FID Slots

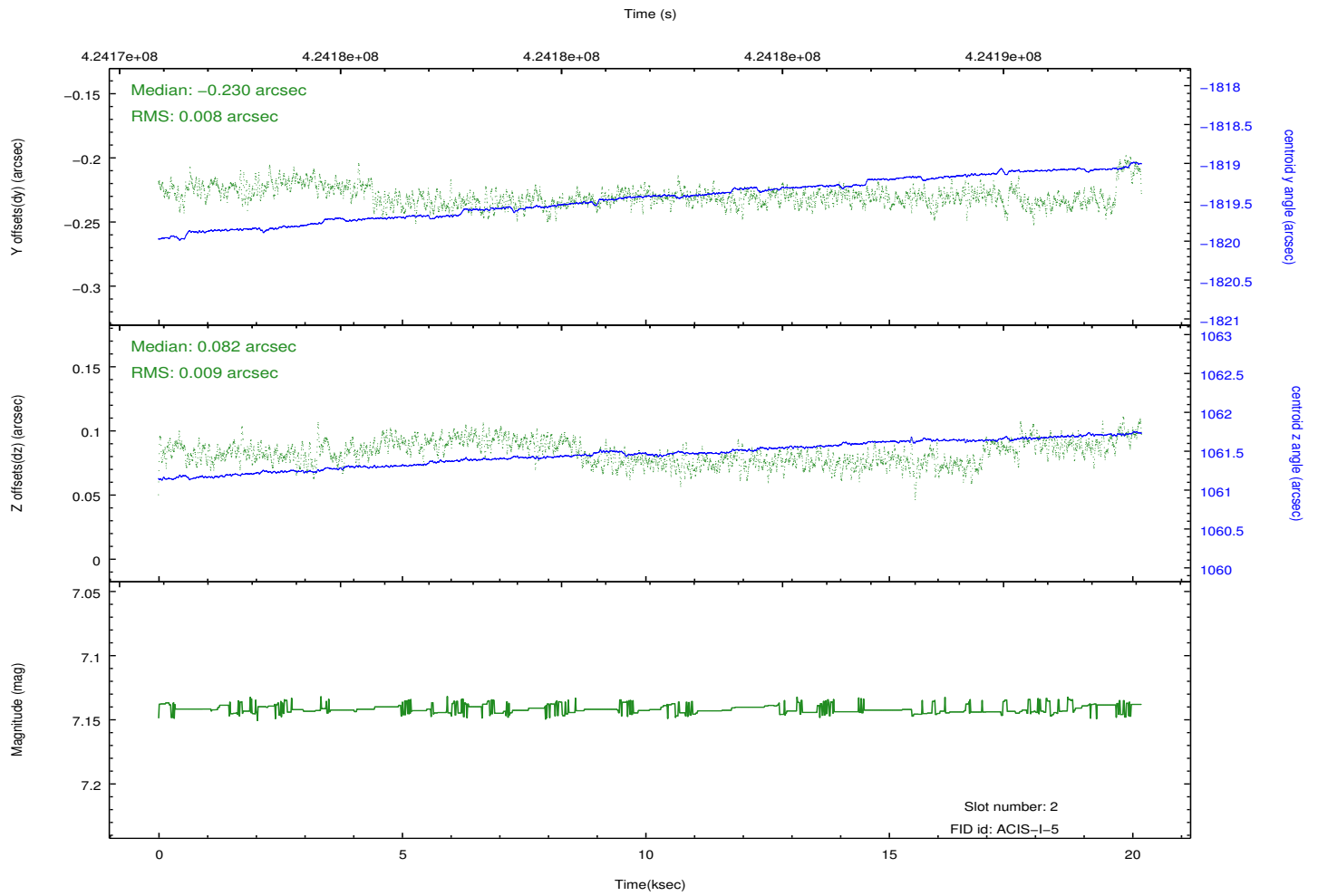
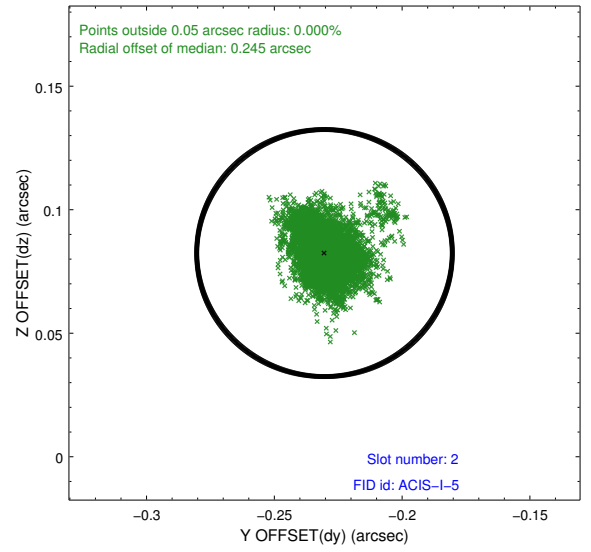
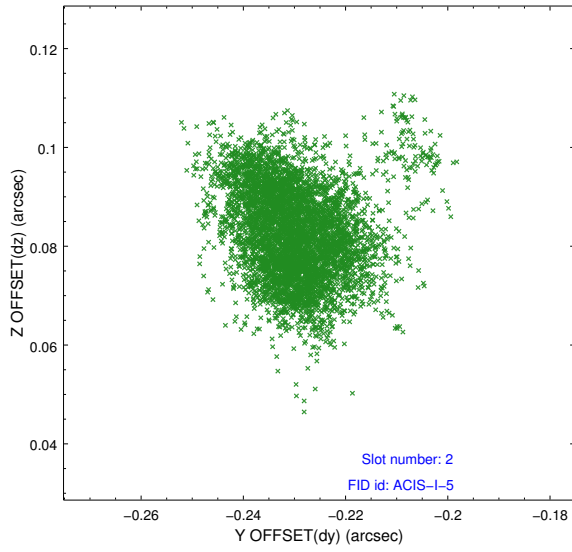
2.5.1 Slot 0



2.5.2 Slot 1



2.5.3 Slot 2



A Summary

A.1 Status

V&V Scientist	Jen Lauer
V&V Date (YYYY-MM-DD)	2012.02.14
V&V Edition	1
V&V Disposition and Status	OK
V&V Charge Time	19.75679992646

A.2 Comments

Joint proposal: NOAO