

# V&V Reference Report

## L2 ASCDS Version : 8.4.3

Observation 12537 - L2 Version 2  
Chandra X-Ray Center

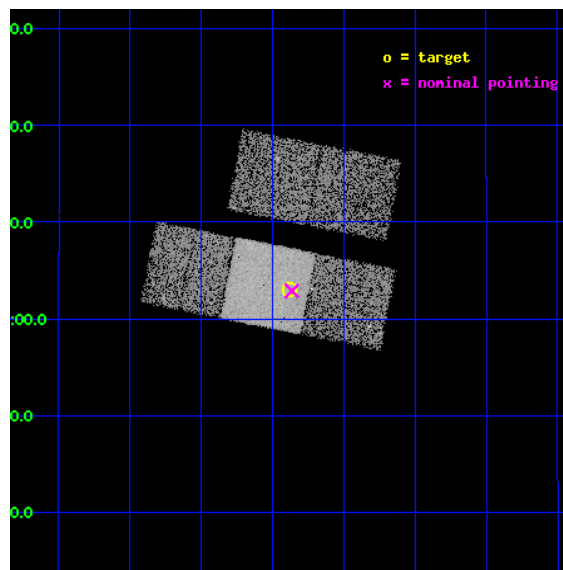
L2 Processing Date : Feb 18 2012

## Contents

<b>1</b>	<b>Front</b>	<b>2</b>
<b>2</b>	<b>OBI</b>	<b>3</b>
2.1	OBI . . . . .	3
2.1.1	Images . . . . .	3
2.1.2	Bias . . . . .	3
2.1.3	Parameters . . . . .	4
2.1.4	Events . . . . .	4
2.2	Compared Parameters . . . . .	5
2.3	Aspect . . . . .	6
2.4	Star Slots . . . . .	9
2.4.1	Slot 3 . . . . .	9
2.4.2	Slot 4 . . . . .	10
2.4.3	Slot 5 . . . . .	11
2.4.4	Slot 6 . . . . .	12
2.4.5	Slot 7 . . . . .	13
2.5	FID Slots . . . . .	14
2.5.1	Slot 0 . . . . .	14
2.5.2	Slot 1 . . . . .	15
2.5.3	Slot 2 . . . . .	16
<b>A</b>	<b>Summary</b>	<b>17</b>
A.1	Status . . . . .	17
A.2	Comments . . . . .	17

# 1 Front

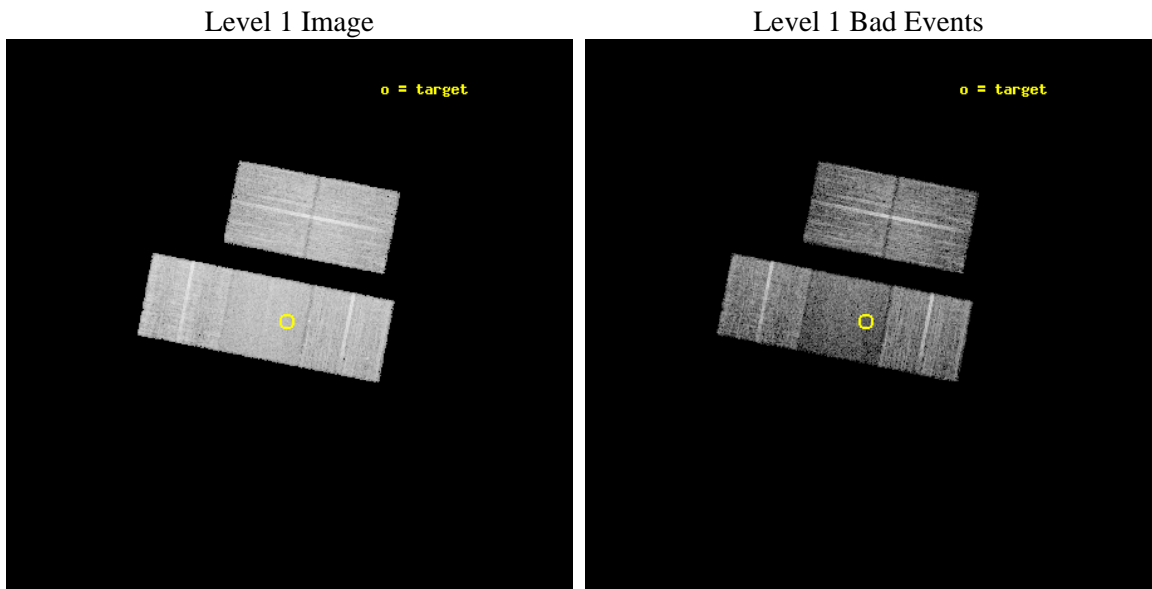
seq_num	401278	Sequence number
obs_id	12537	Observation id
title	Searching New Millisecond Pulsar Fields for X-ray Counterparts	Pro
observer	Dr. Michael Wolff	Principal investigator
object	PSRJ2017+06	Source name
dtcycle	0	&#160
cycle	P	events from which exps? Prim/Second/Both
ra_targ	304.344602	Observer's specified target RA [deg]
dec_targ	6.051547	Observer's specified target Dec [deg]
ra_nom	304.34099003277	Nominal RA [deg]
dec_nom	6.0482776534469	Nominal Dec [deg]
roll_nom	191.0948241776	Nominal Roll [deg]
revision	2	Processing version of data
ontime	10037.8000772	Sum of GTIs [s]
livetime	9906.6488294704	Livetime [s]
ontime2	10037.8000772	Sum of GTIs [s]
ontime3	10034.659056842	Sum of GTIs [s]
ontime6	10037.8000772	Sum of GTIs [s]
ontime7	10037.8000772	Sum of GTIs [s]
ontime8	10037.8000772	Sum of GTIs [s]
l2events	52237	Number of level 2 events



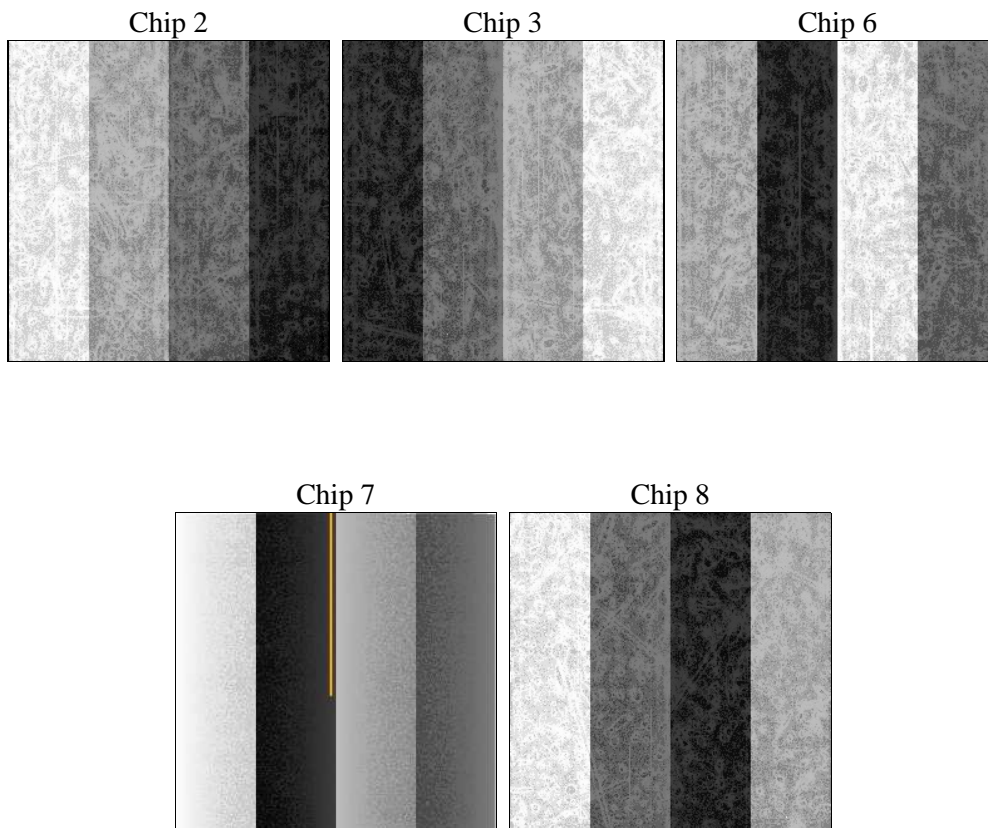
## 2 OBI

### 2.1 OBI

#### 2.1.1 Images



#### 2.1.2 Bias



### 2.1.3 Parameters

obi_num	0	Obi number	sched_exp_time	10000.000000	[s] Scheduled observation exposure time
ascdsver	8.4.3	Processing system revision	ontime	10037.8000772	Sum of GTIs [s]
caldbver	4.4.8	&#160	ontime2	10037.8000772	Sum of GTIs [s]
date	2012-02-18T18:07:14	Date and time of file creation	ontime3	10034.659056842	Sum of GTIs [s]
revision	2	Processing version of data	ontime6	10037.8000772	Sum of GTIs [s]
			ontime7	10037.8000772	Sum of GTIs [s]
			ontime8	10037.8000772	Sum of GTIs [s]
			l1events	321543	Number of level 1 events

### 2.1.4 Events

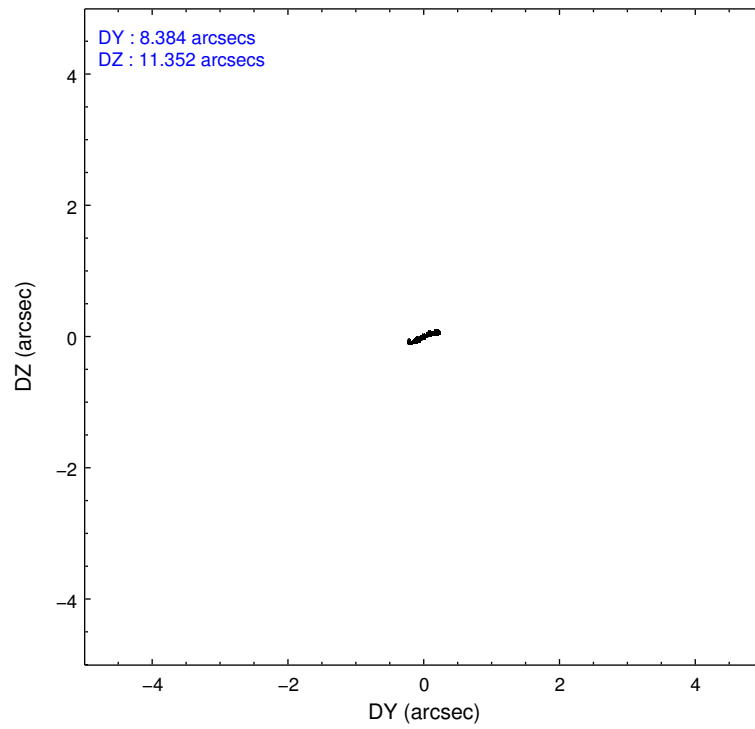
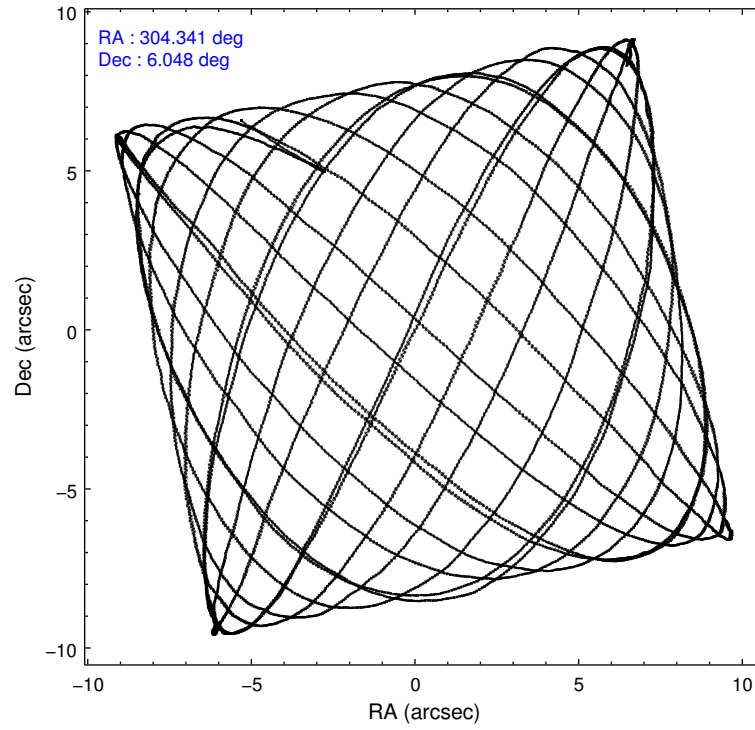
	ccd 2	ccd 3	ccd 6	ccd 7	ccd 8
level 1 events	61824	58167	62093	64101	75358
rejected events	55906	52138	55174	33658	56209
rejected %	90%	89%	88%	52%	74%

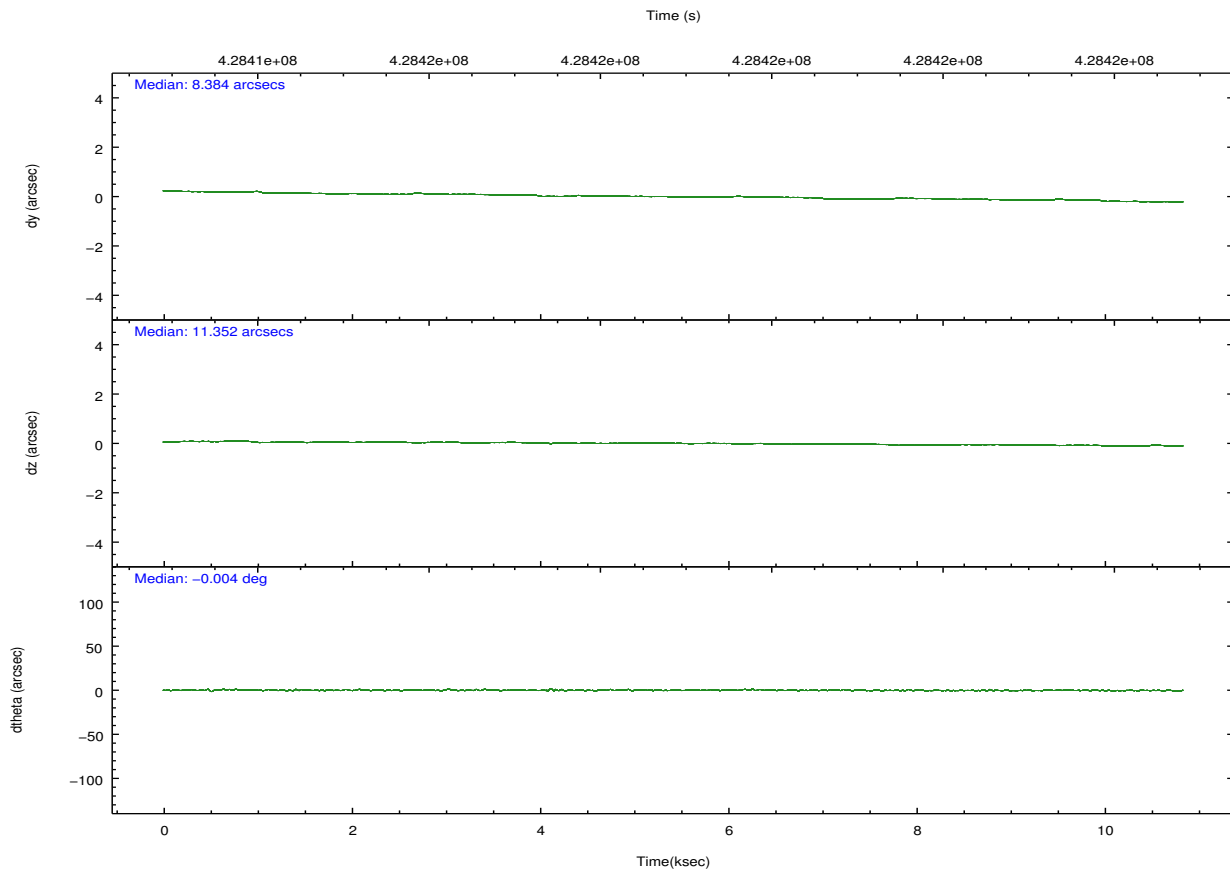
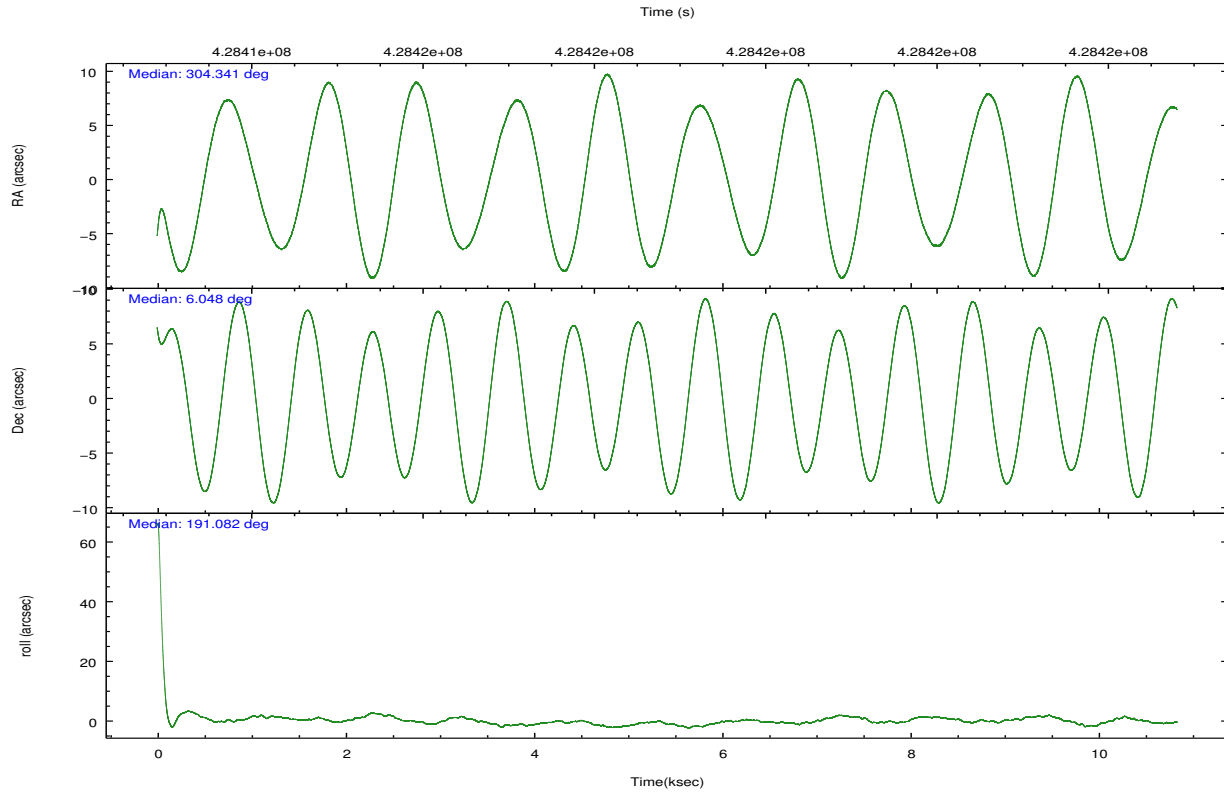
	ccd 2	ccd 3	ccd 6	ccd 7	ccd 8
grade 0 events	2204	2293	2482	2913	5360
	3%	3%	3%	4%	7%
grade 1 events	39	25	36	102	49
	0%	0%	0%	0%	0%
grade 2 events	1342	1264	1616	6525	4485
	2%	2%	2%	10%	5%
grade 3 events	649	669	660	2548	1956
	1%	1%	1%	3%	2%
grade 4 events	671	628	631	2542	1932
	1%	1%	1%	3%	2%
grade 5 events	1788	2303	2251	6402	3567
	2%	3%	3%	9%	4%
grade 6 events	1056	1178	1534	15923	5446
	1%	2%	2%	24%	7%
grade 7 events	54075	49807	52883	27146	52563
	87%	85%	85%	42%	69%

## 2.2 Compared Parameters

Parameter	Planned	Actual	Parameter	Planned	Actual
Instrument	ACIS	ACIS	Obspar format version number	7	7
Detector	ACIS-23678	ACIS-23678	Obspar file type	PREDICTED	ACTUAL
Grating	NONE	NONE	Obspar update status	NONE	UPDATED
Data mode	VFAINT	VFAINT	CCD I0 on	N	N
Observation mode	POINTING	POINTING	CCD I1 on	N	N
[deg] Pointing RA	304.361497	304.3409900327739	CCD I2 on	O2	Y
[deg] Pointing Dec	6.066510	6.048277653446927	CCD I3 on	Y	Y
[deg] Pointing Roll	190.935938	191.0948241776046	CCD S0 on	N	N
[mm] SIM focus pos	-0.684267	-0.6828225247311905	CCD S1 on	N	N
[mm] SIM defocus	0	0.001444936568705701	CCD S2 on	Y	Y
[mm] SIM translation stage pos	-190.132523	-190.1400660498719	CCD S3 on	Y	Y
[mm] SIM translation stage offset	0	0.00754346686406393	CCD S4 on	O1	Y
[s] Observation start time (MET)	428414263.184000	428412274.99427	CCD S5 on	N	N
Observation start date	2011-07-30T11:56:37	2011-07-30T11:24:34	Number of optional ACIS chips dropped	0	0
[s] Observation end time (MET)	428424263.184000	428425151.04495	On-chip summing requested	N	N
Observation end date	2011-07-30T14:43:17	2011-07-30T14:59:11	Subarray requested	NONE	NONE
Read mode	TIMED	TIMED	Alternating exposures requested	N	N
			[s] Primary exposure time	0.000000	3.1

## 2.3 Aspect



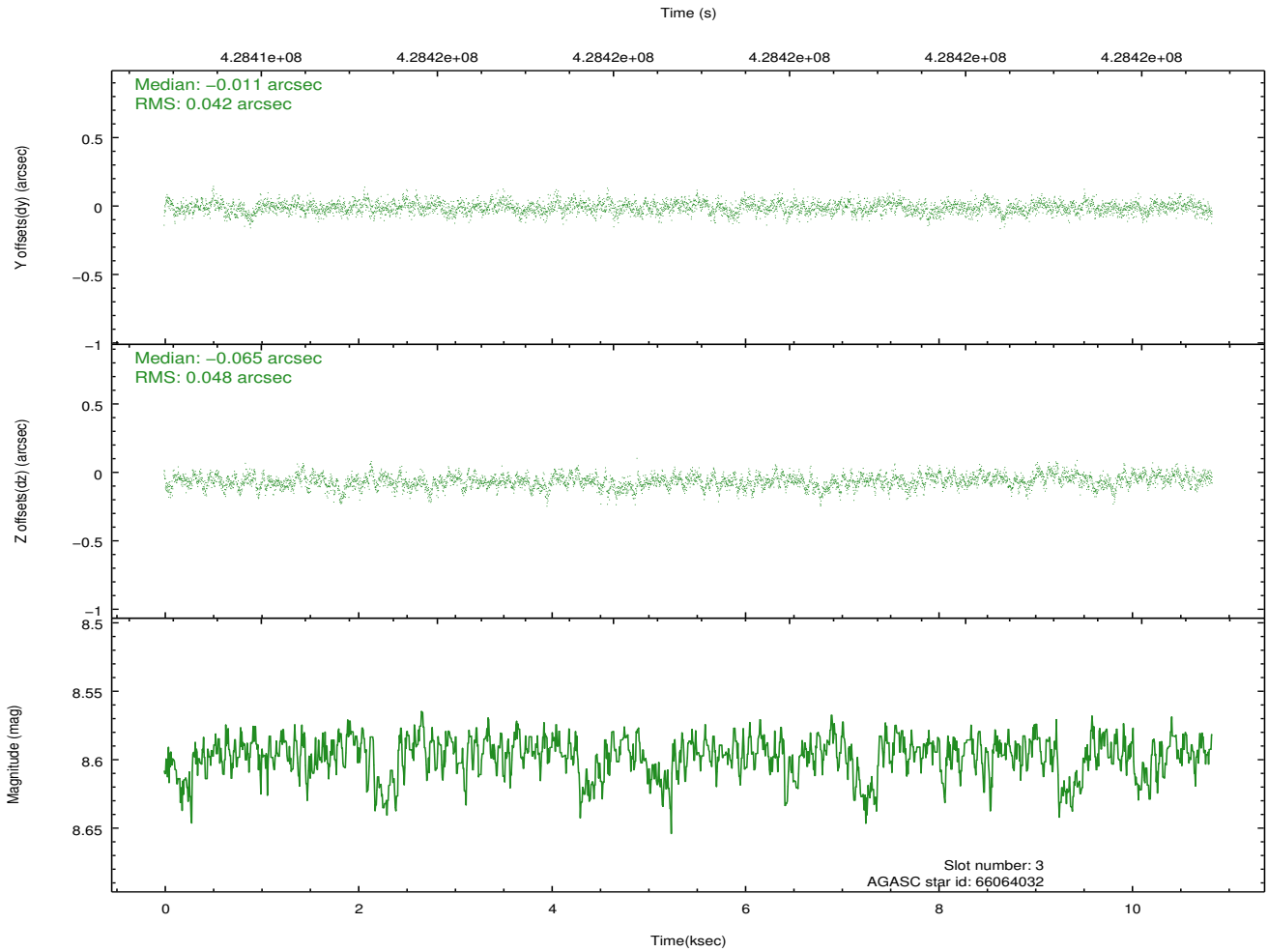
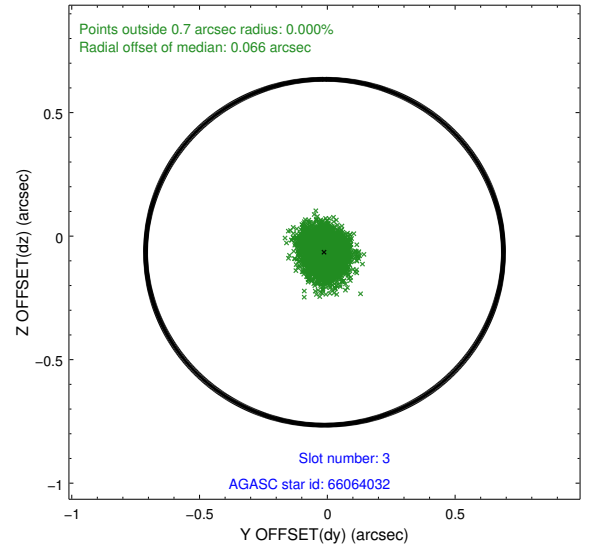
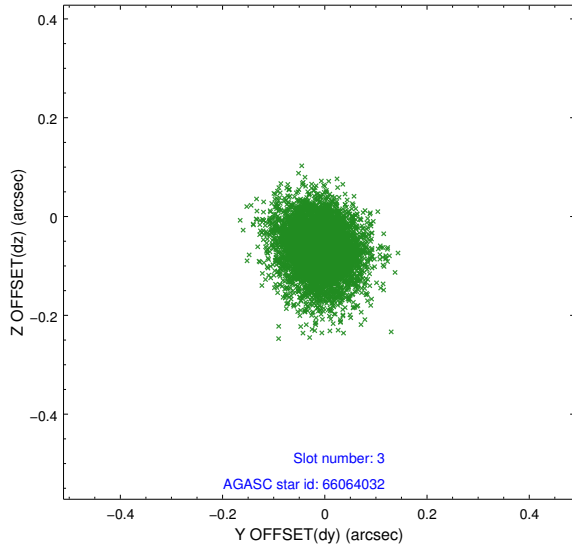


### Slot Statistics

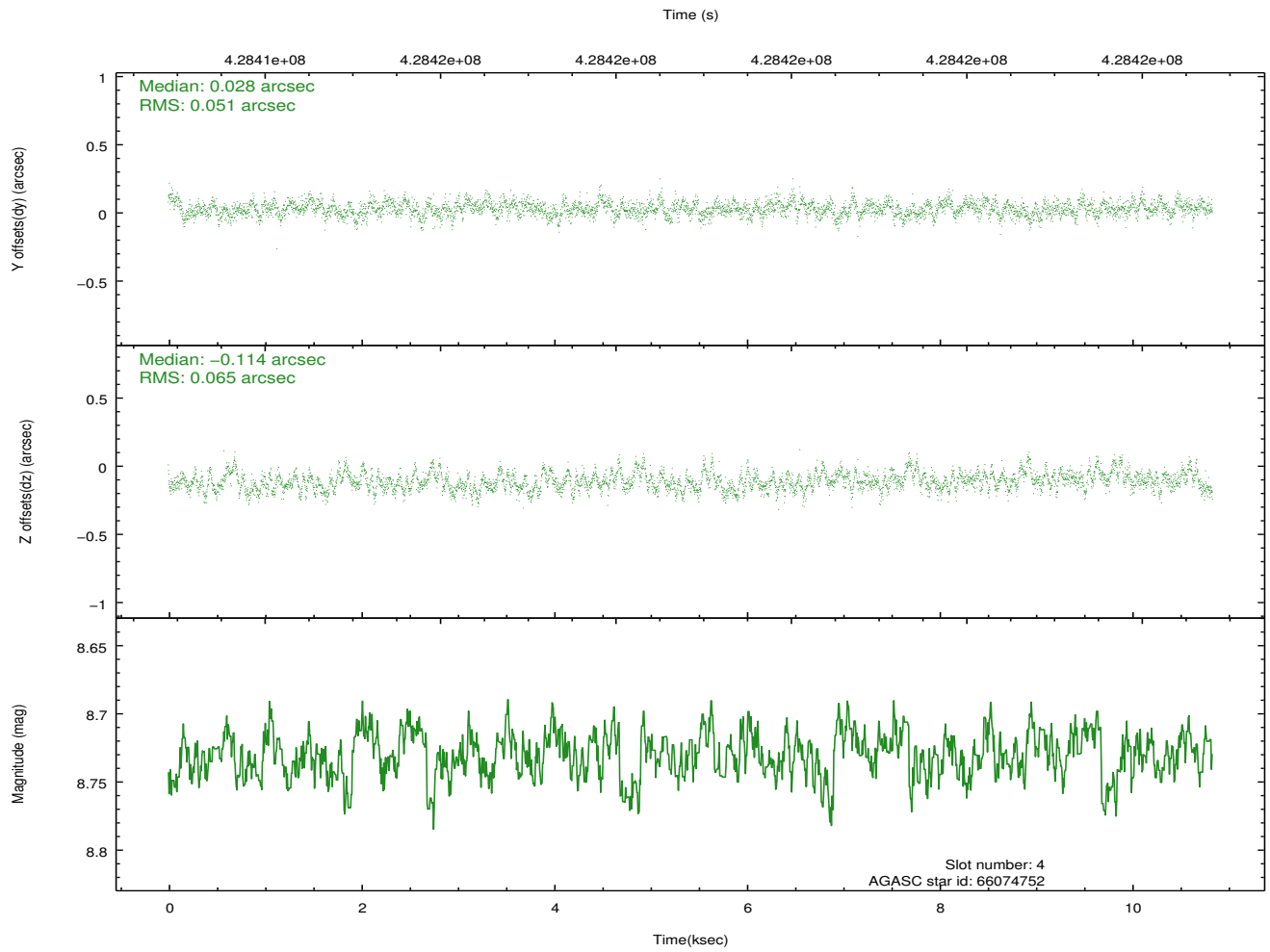
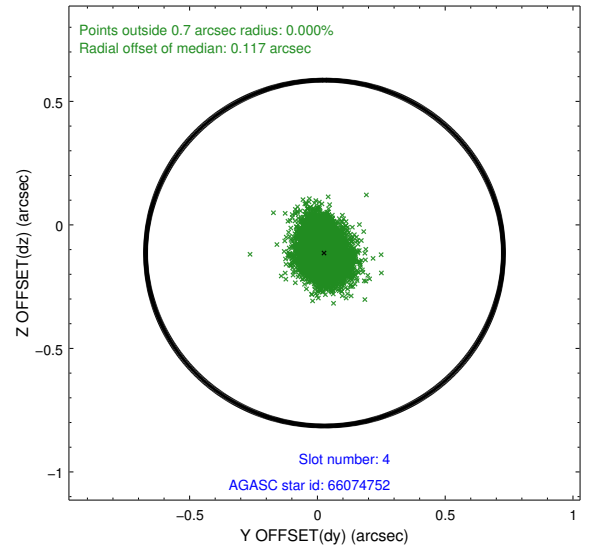
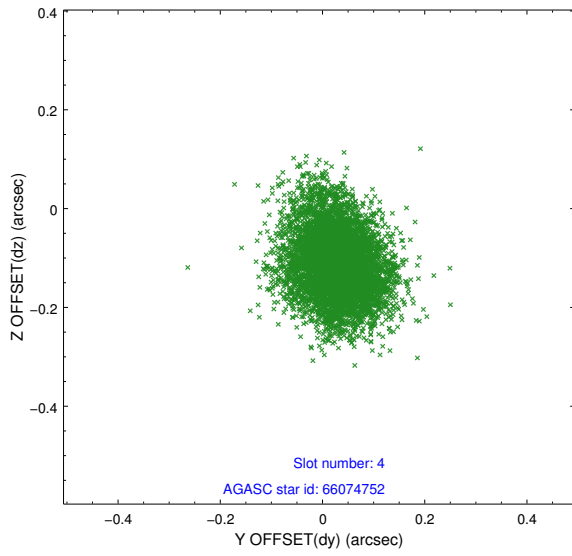
slot	status	id	mag	n_pts	med_dy	med_dz	dr1	dr2	ra	dec	mean_y	mean_z
0	FID	ACIS-S-2	6.97	2643	-0.059	-0.039	0.009	0.016	0.000000	0.000000	-761.23	-1732.67
1	FID	ACIS-S-4	7.06	2643	0.233	0.039	0.009	0.016	0.000000	0.000000	2152.12	175.40
2	FID	ACIS-S-5	7.09	2643	-0.205	0.009	0.008	0.014	0.000000	0.000000	-1813.60	169.58
3	GUIDE	66064032	8.60	5285	-0.011	-0.065	0.067	0.112	304.634764	5.620585	-657.00	1762.07
4	GUIDE	66074752	8.73	5284	0.028	-0.114	0.087	0.144	304.475886	5.586470	-74.94	1774.65
5	GUIDE	66601368	9.14	5286	-0.005	0.039	0.091	0.147	303.905137	6.244449	1484.06	-937.82
6	GUIDE	66602360	9.30	5261	-0.125	0.080	0.103	0.170	304.220579	6.615651	120.85	-2036.09
7	GUIDE	66602736	9.82	5281	0.113	0.059	0.120	0.193	304.549695	6.683596	-1081.36	-2053.89

## 2.4 Star Slots

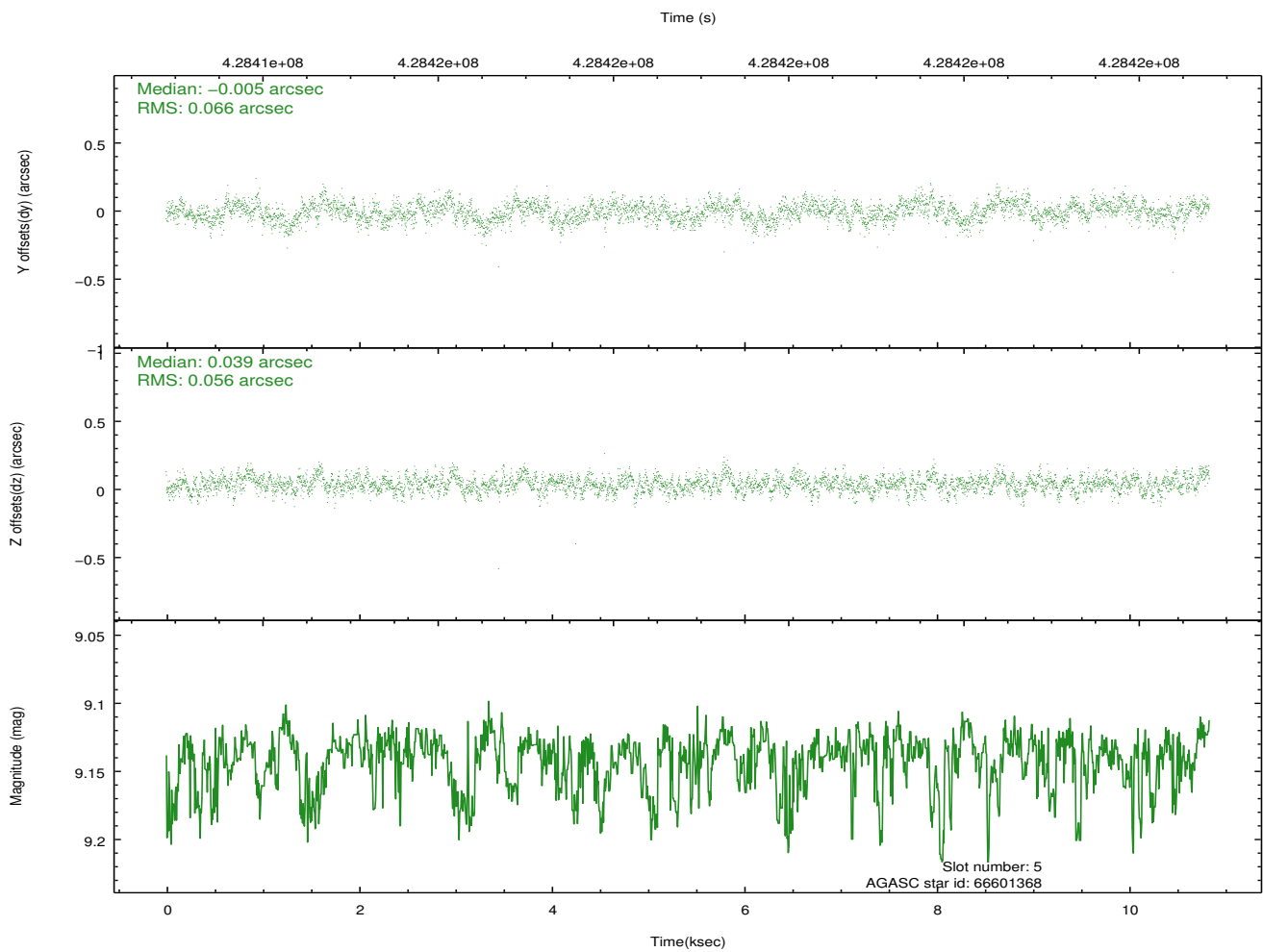
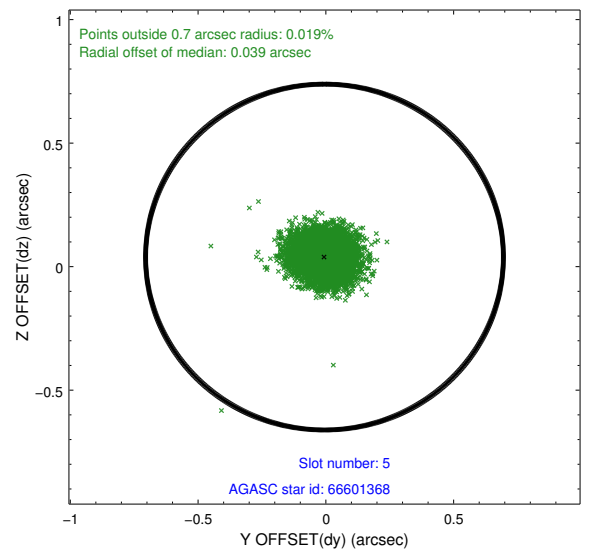
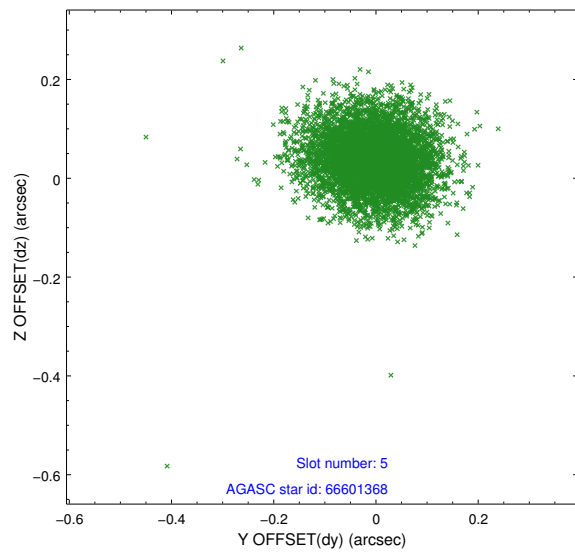
### 2.4.1 Slot 3



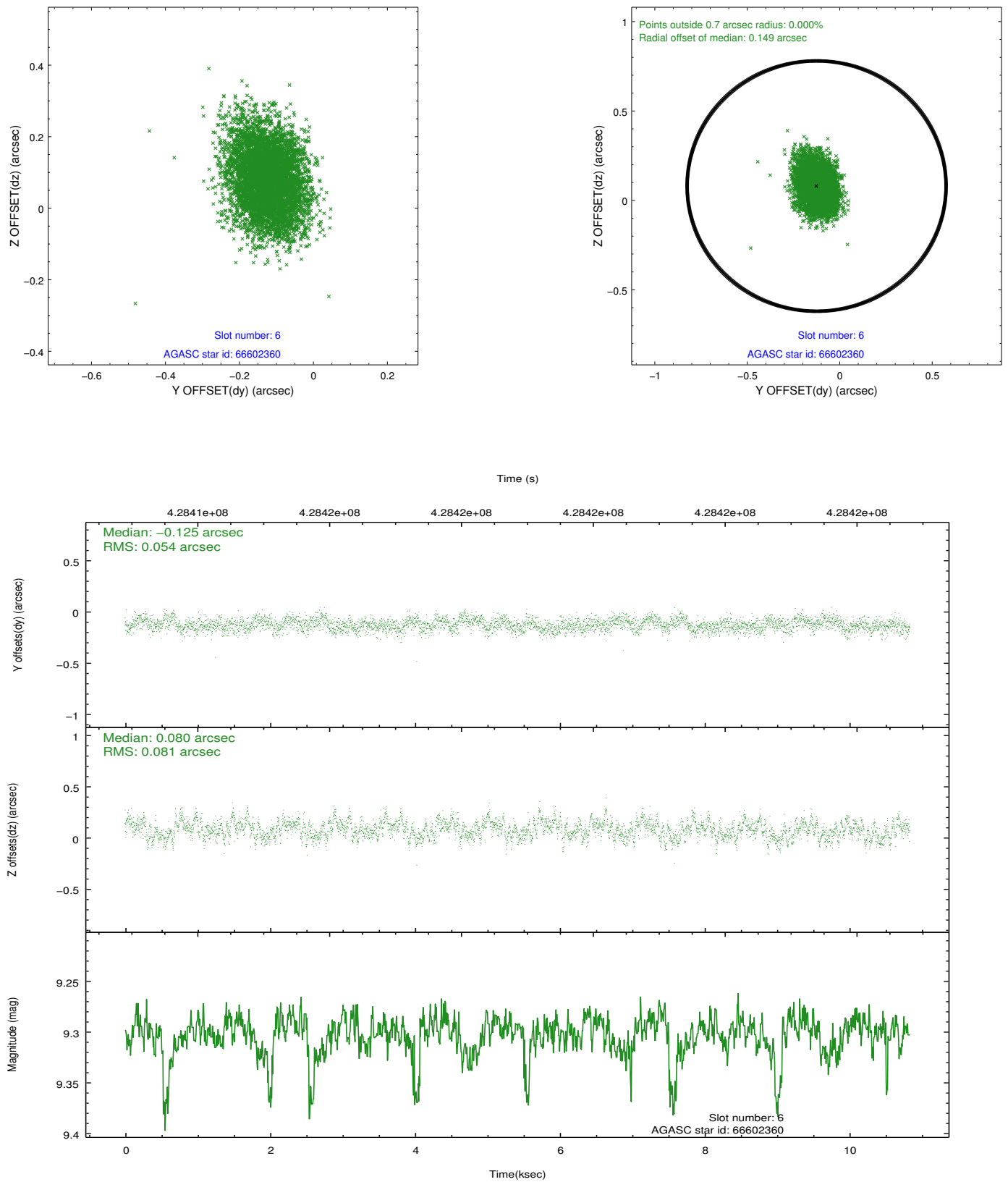
## 2.4.2 Slot 4



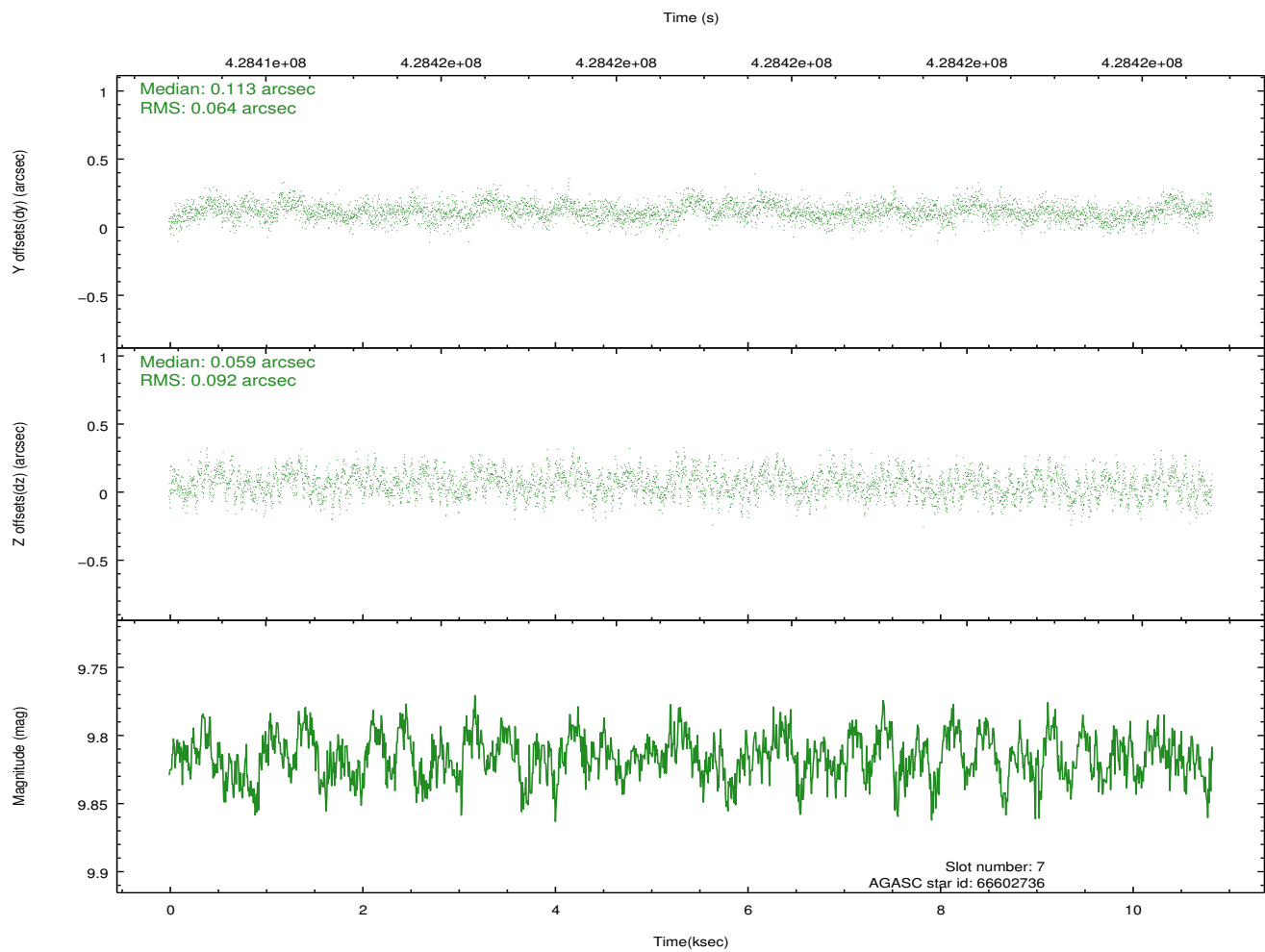
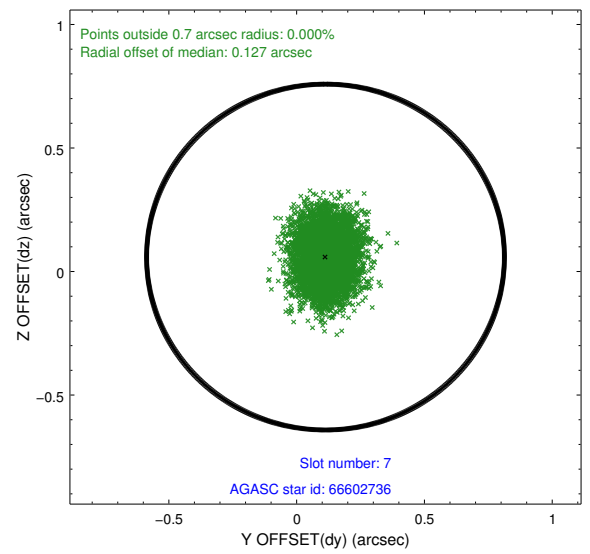
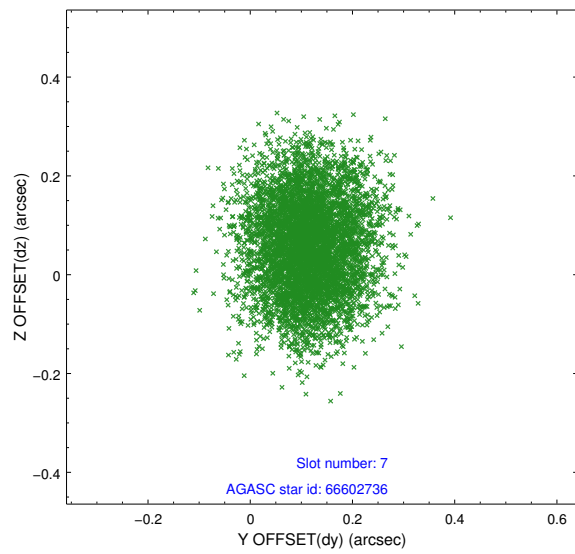
### 2.4.3 Slot 5



## 2.4.4 Slot 6

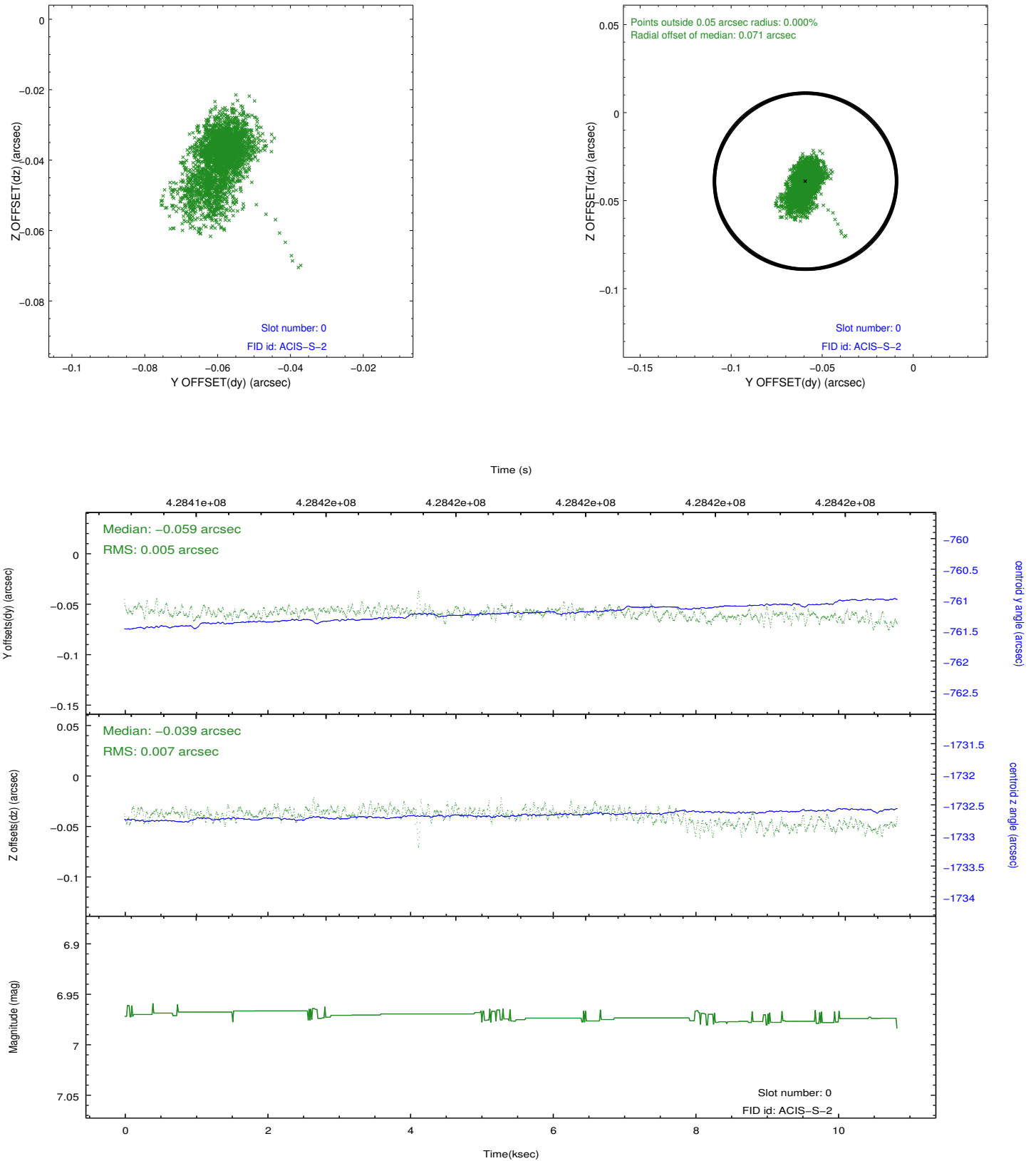


## 2.4.5 Slot 7

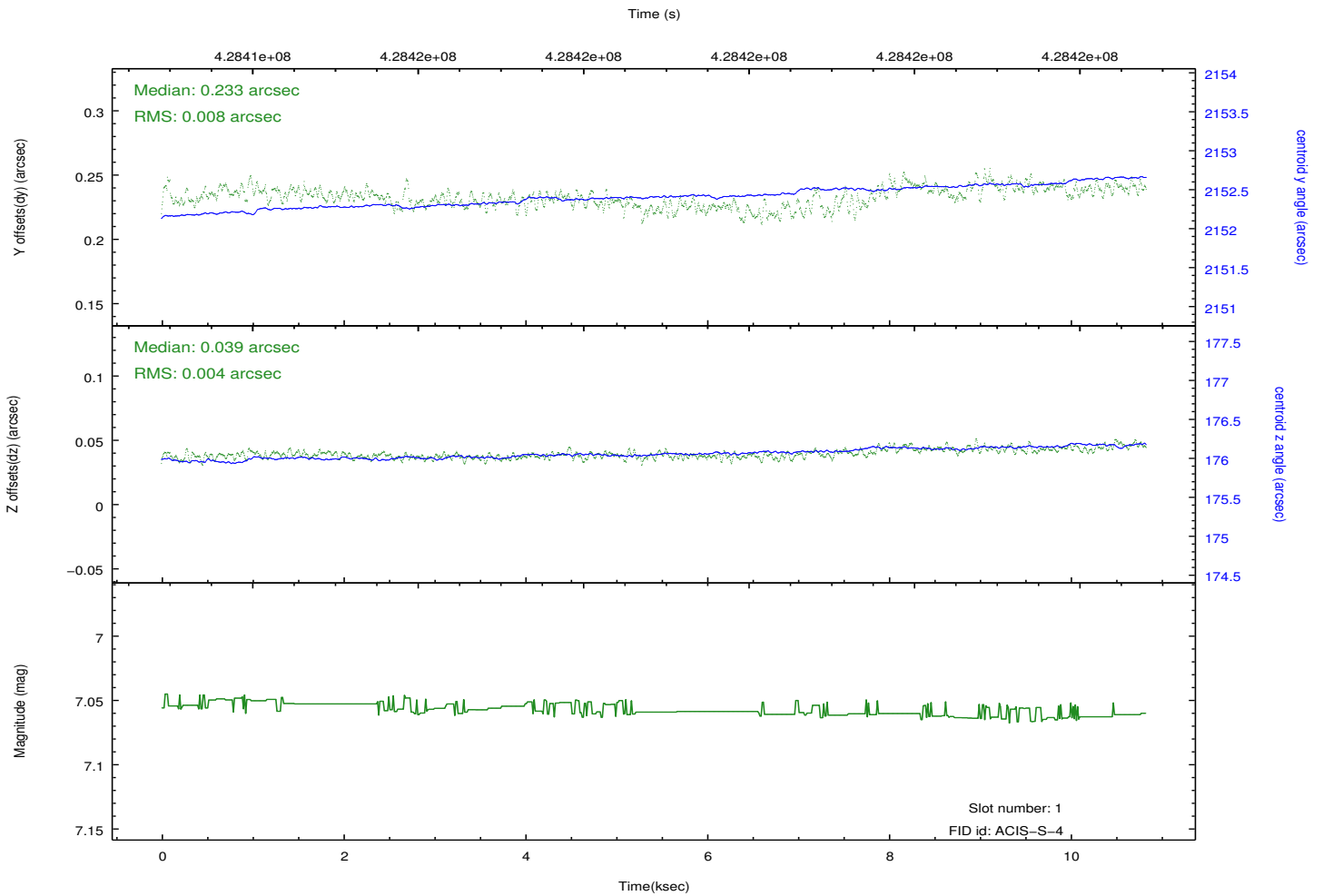
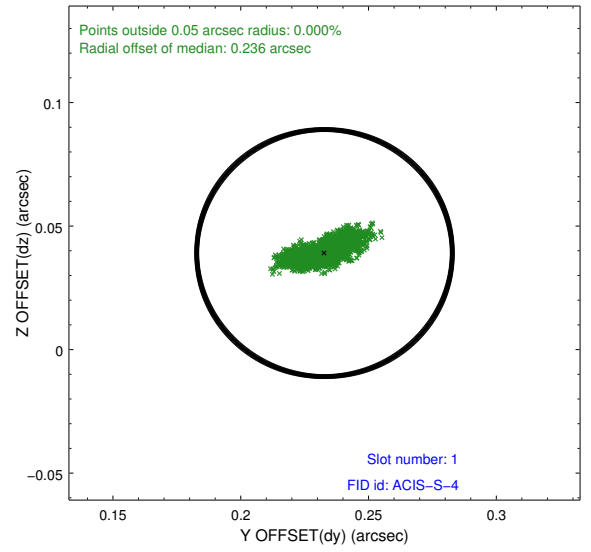
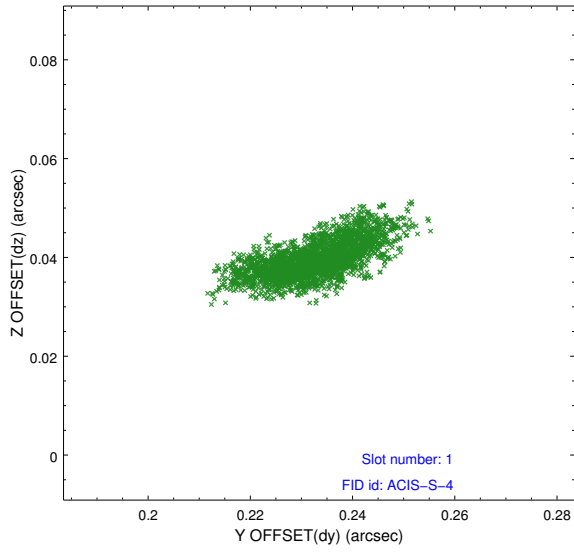


## 2.5 FID Slots

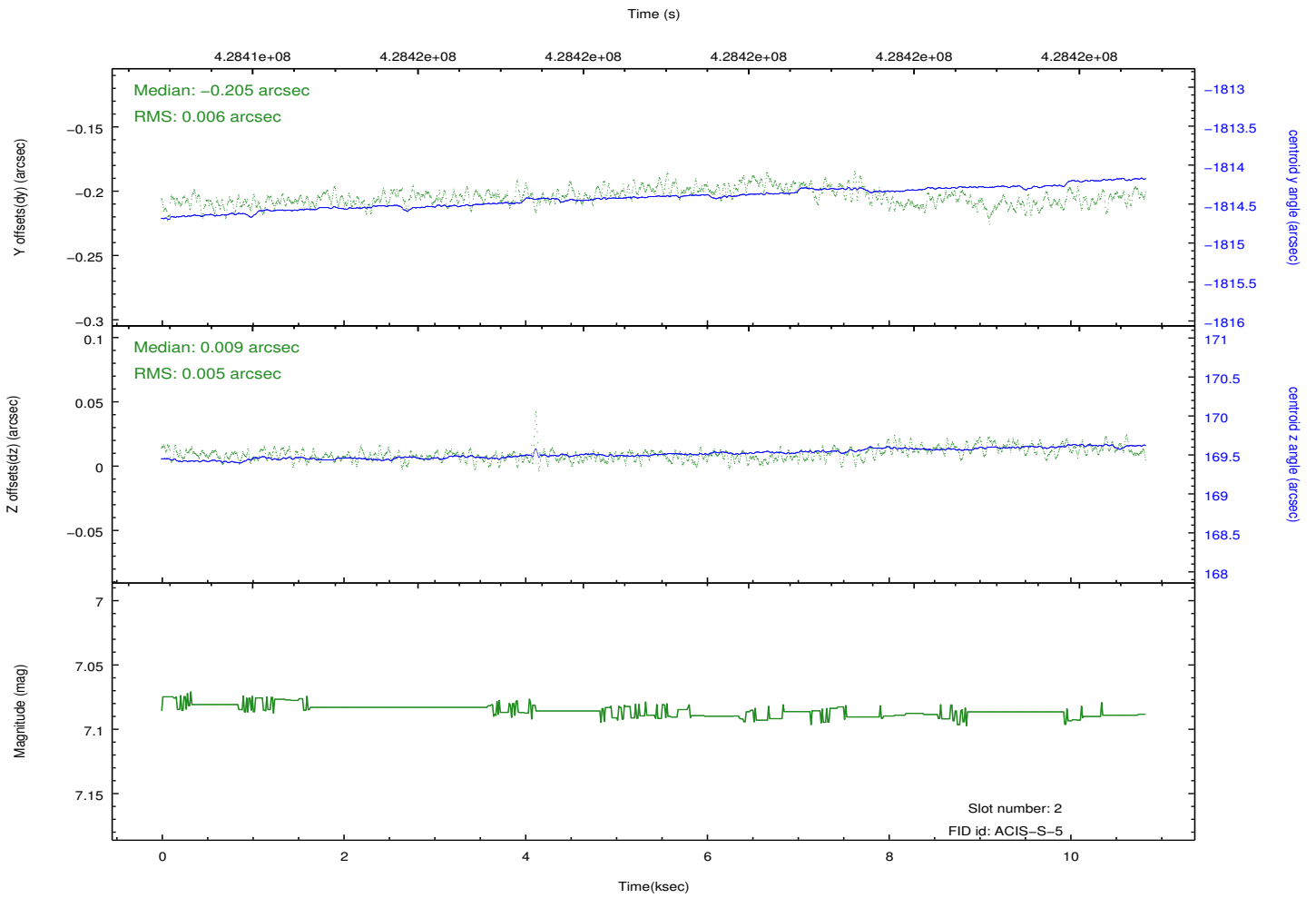
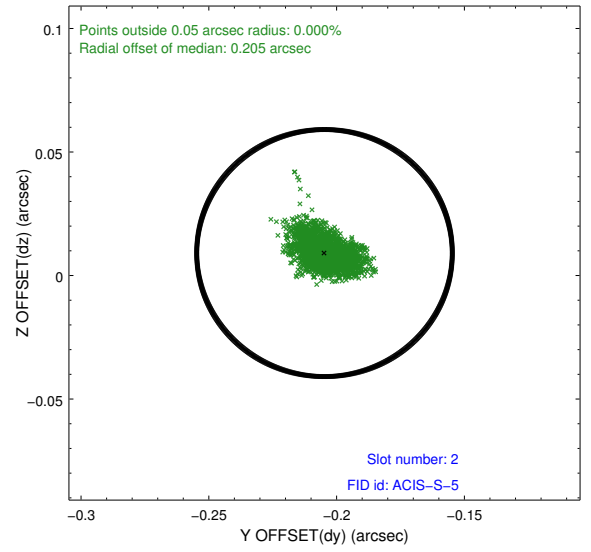
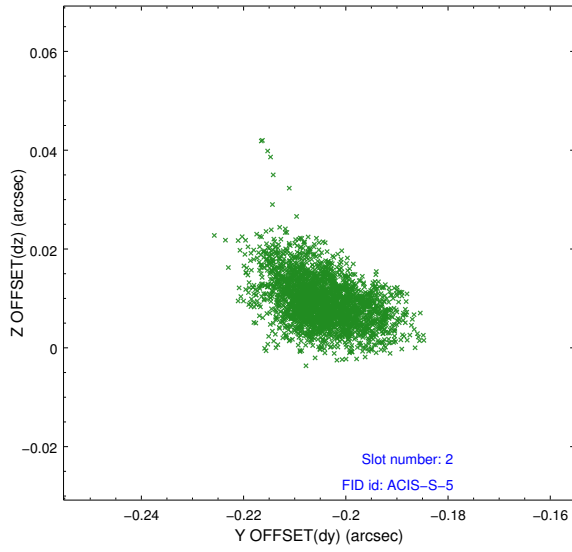
### 2.5.1 Slot 0



## 2.5.2 Slot 1



### 2.5.3 Slot 2



# A Summary

## A.1 Status

V&V Scientist	Jen Lauer
V&V Date (YYYY-MM-DD)	2012.02.21
V&V Edition	1
V&V Disposition and Status	OK
V&V Charge Time	10.0378000772

## A.2 Comments