

V&V Reference Report

L2 ASCDS Version : 8.4.3

Observation 12827 - L2 Version 2
Chandra X-Ray Center

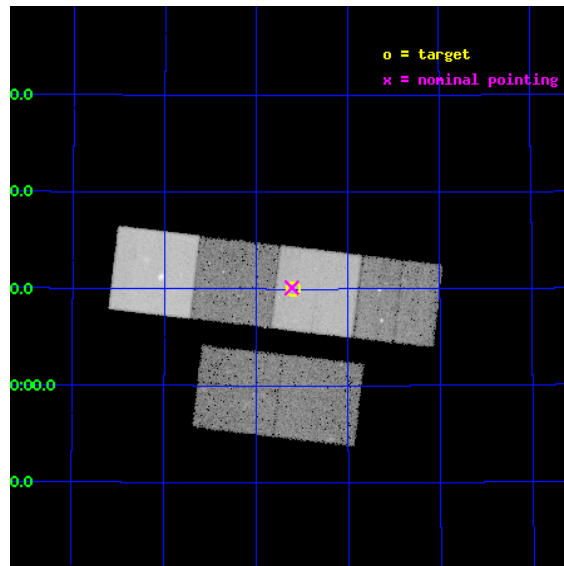
L2 Processing Date : Feb 28 2012

Contents

1	Front	2
2	OBI	3
2.1	OBI	3
2.1.1	Images	3
2.1.2	Bias	3
2.1.3	Parameters	4
2.1.4	Events	4
2.2	Compared Parameters	5
2.3	Aspect	6
2.4	Star Slots	9
2.4.1	Slot 3	9
2.4.2	Slot 4	10
2.4.3	Slot 5	11
2.4.4	Slot 6	12
2.4.5	Slot 7	13
2.5	FID Slots	14
2.5.1	Slot 0	14
2.5.2	Slot 1	15
2.5.3	Slot 2	16
A	Summary	17
A.1	Status	17
A.2	Comments	17

1 Front

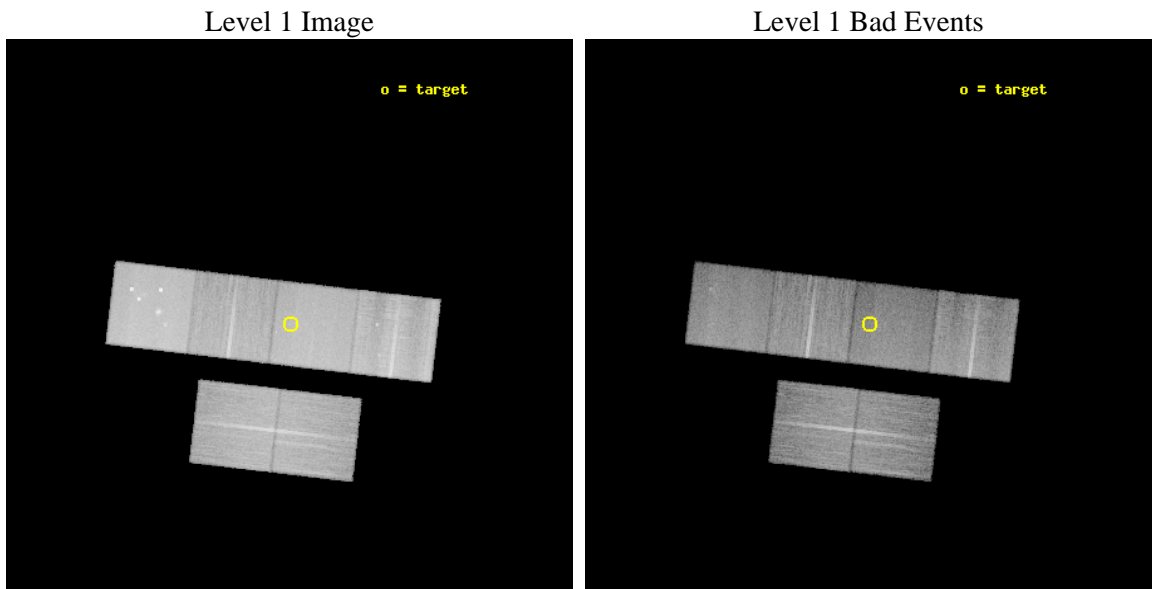
seq_num	702462	Sequence number
obs_id	12827	Observation id
title	X-ray follow-up of Seyferts with candidate dual supermassive black holes	Proposal title
observer	Dr. Brian Gerke	Principal investigator
object	SDSS J160436.21+500958.1	Source name
dtycycle	0	
cycle	P	events from which exps? Prim/Second/Both
ra_targ	241.150833	Observer's specified target RA [deg]
dec_targ	50.166139	Observer's specified target Dec [deg]
ra_nom	241.15287797192	Nominal RA [deg]
dec_nom	50.168849328044	Nominal Dec [deg]
roll_nom	6.6900555761086	Nominal Roll [deg]
revision	2	Processing version of data
ontime	29961.151270807	Sum of GTIs [s]
livetime	29581.765132976	Livetime [s]
ontime2	29961.19231081	Sum of GTIs [s]
ontime3	29961.028150797	Sum of GTIs [s]
ontime5	29961.110230803	Sum of GTIs [s]
ontime6	29957.828190446	Sum of GTIs [s]
ontime7	29961.151270807	Sum of GTIs [s]
ontime8	29960.987110794	Sum of GTIs [s]
l2events	321176	Number of level 2 events



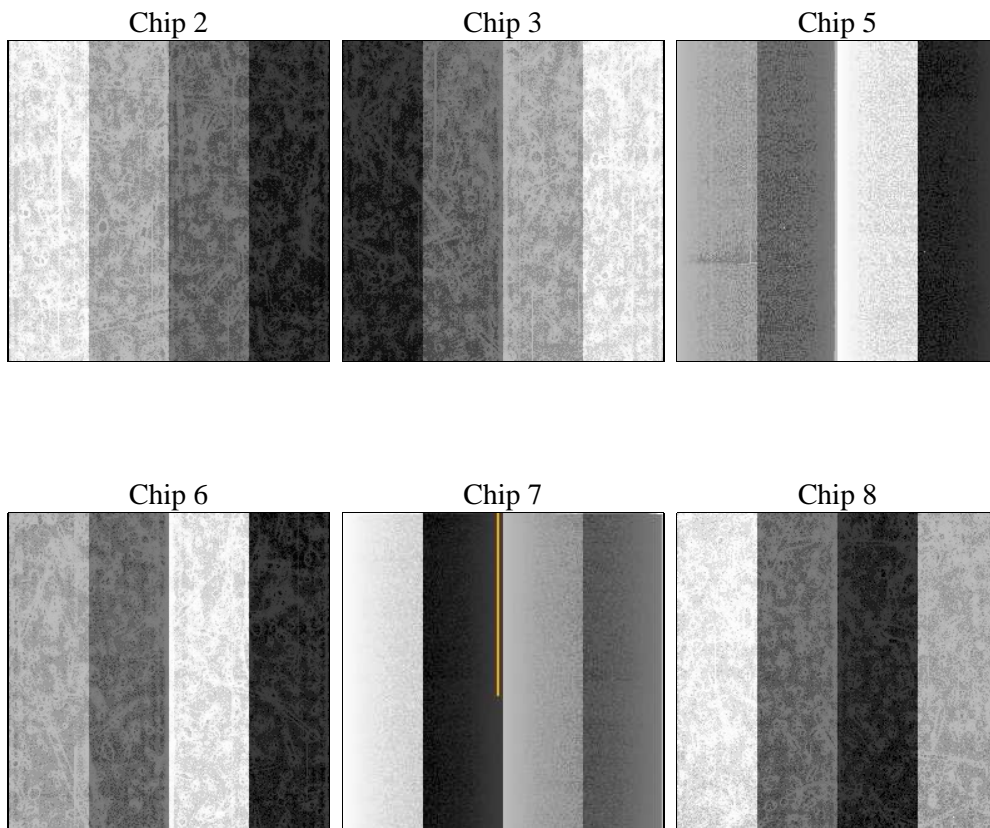
2 OBI

2.1 OBI

2.1.1 Images



2.1.2 Bias



2.1.3 Parameters

obi_num	5	Obi number	sched_exp_time	30000.000000	[s] Scheduled observation exposure time
ascdsver	8.4.3	Processing system revision	ontime	29961.151270807	Sum of GTIs [s]
caldbver	4.4.8	 	ontime2	29961.19231081	Sum of GTIs [s]
date	2012-02-28T01:23:26	Date and time of file creation	ontime3	29961.028150797	Sum of GTIs [s]
revision	2	Processing version of data	ontime5	29961.110230803	Sum of GTIs [s]
			ontime6	29957.828190446	Sum of GTIs [s]
			ontime7	29961.151270807	Sum of GTIs [s]
			ontime8	29960.987110794	Sum of GTIs [s]
			l1events	1358470	Number of level 1 events

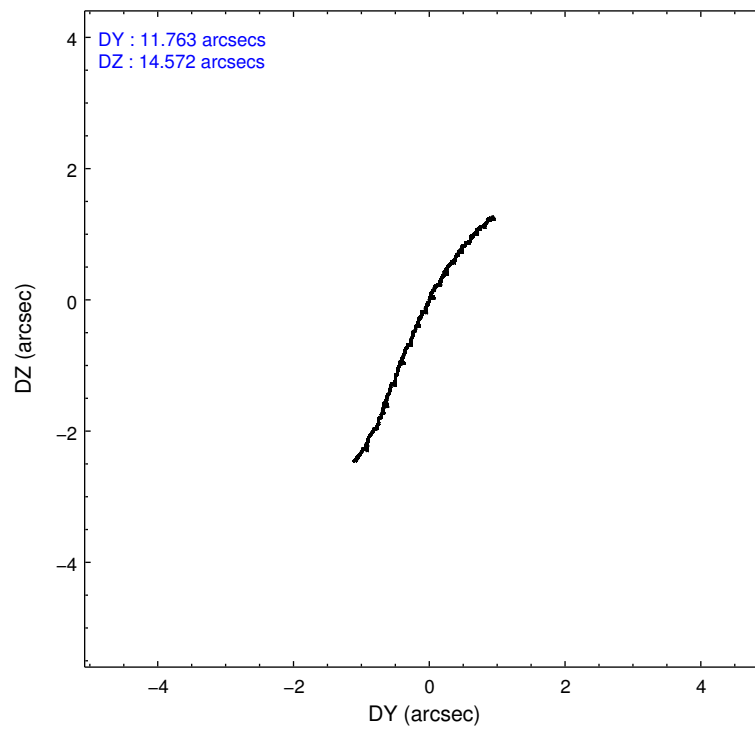
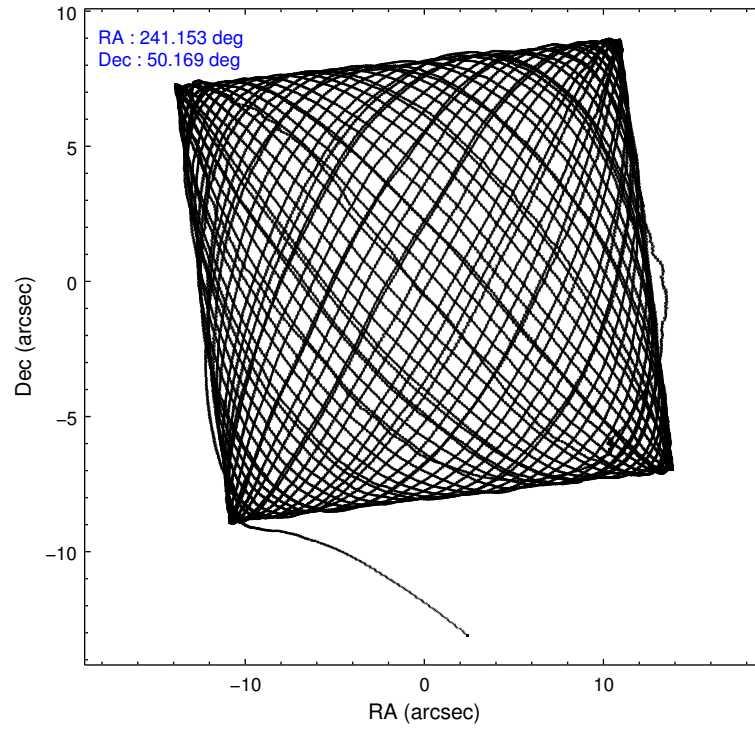
2.1.4 Events

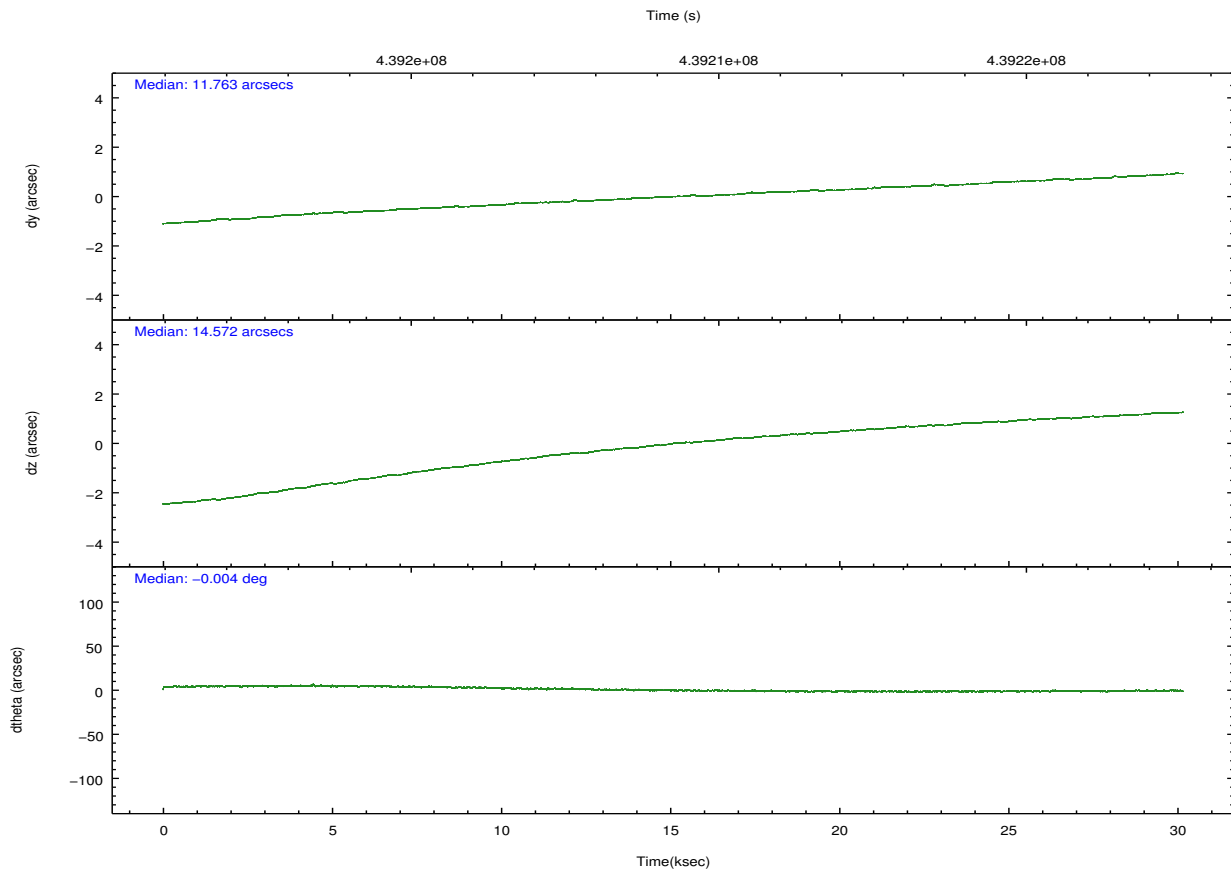
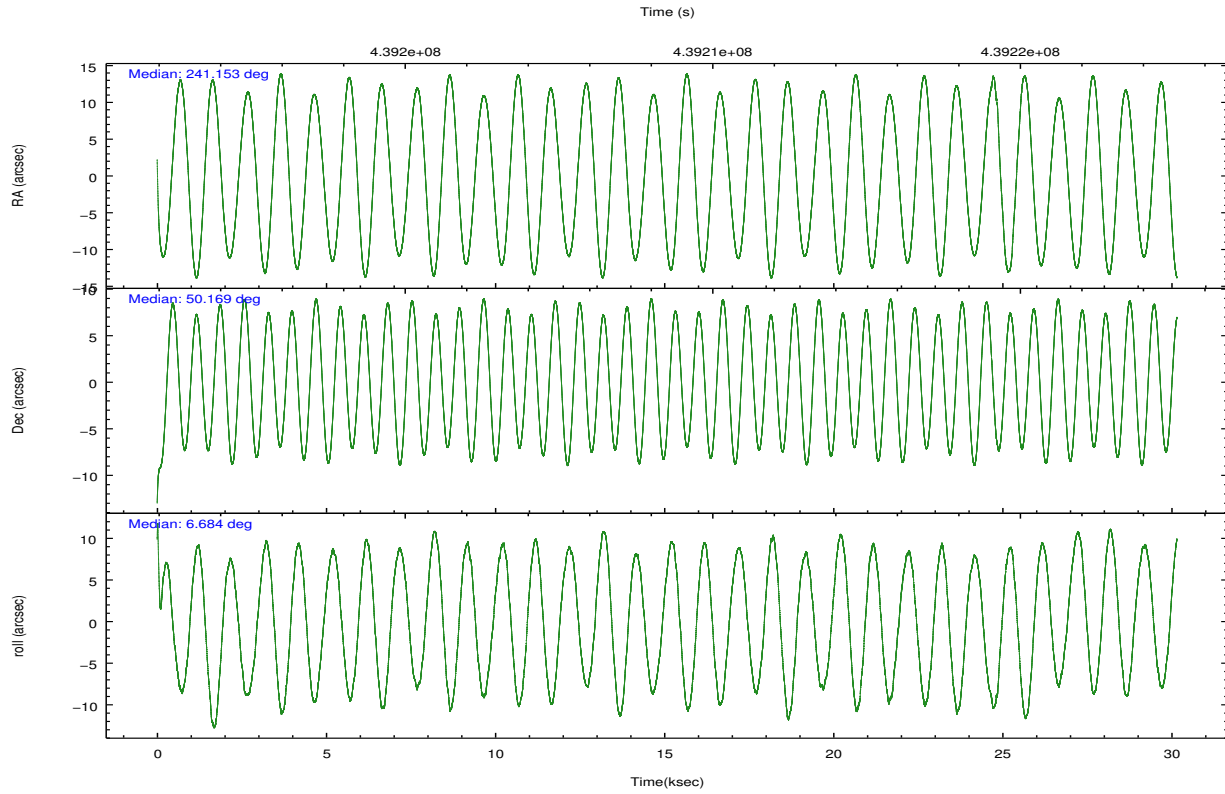
	ccd 2	ccd 3	ccd 5	ccd 6	ccd 7	ccd 8		ccd 2	ccd 3	ccd 5	ccd 6	ccd 7	ccd 8
level 1 events	194283	181176	301124	191927	240832	249128	grade 0 events	7336	6816	16984	7604	9785	20070
rejected events	173343	161647	151701	169990	133860	182295		3%	3%	5%	3%	4%	8%
rejected %	89%	89%	50%	88%	55%	73%	grade 1 events	127	99	702	91	338	206
								0%	0%	0%	0%	0%	0%
							grade 2 events	5185	4454	44011	4946	21680	15552
								2%	2%	14%	2%	9%	6%
							grade 3 events	2164	2153	5641	2296	9262	6856
								1%	1%	1%	1%	3%	2%
							grade 4 events	2154	2095	5423	2237	9057	6499
								1%	1%	1%	1%	3%	2%
							grade 5 events	8203	8931	22557	9078	24938	13162
								4%	4%	7%	4%	10%	5%
							grade 6 events	4106	4016	77395	4858	57208	17867
								2%	2%	25%	2%	23%	7%
							grade 7 events	165008	152612	128411	160817	108564	168916
								84%	84%	42%	83%	45%	67%

2.2 Compared Parameters

Parameter	Planned	Actual	Parameter	Planned	Actual
Instrument	ACIS	ACIS	Obspar format version number	7	7
Detector	ACIS-235678	ACIS-235678	Obspar file type	PREDICTED	ACTUAL
Grating	NONE	NONE	Obspar update status	NONE	UPDATED
Data mode	FAINT	FAINT	CCD I0 on	N	N
Observation mode	POINTING	POINTING	CCD I1 on	N	N
[deg] Pointing RA	241.119018	241.1528779719169	CCD I2 on	O2	Y
[deg] Pointing Dec	50.152225	50.16884932804359	CCD I3 on	O1	Y
[deg] Pointing Roll	6.559427	6.690055576108638	CCD S0 on	N	N
[mm] SIM focus pos	-0.684267	-0.6828225247311905	CCD S1 on	O4	Y
[mm] SIM defocus	0	0.001444936568705701	CCD S2 on	Y	Y
[mm] SIM translation stage pos	-190.132523	-190.1425803651734	CCD S3 on	Y	Y
[mm] SIM translation stage offset	0	0.01005778216563158	CCD S4 on	O3	Y
[s] Observation start time (MET)	439193586.184000	439192604.19765	CCD S5 on	N	N
Observation start date	2011-12-02T06:12:00	2011-12-02T05:56:44	Number of optional ACIS chips dropped	0	0
[s] Observation end time (MET)	439223586.184000	439223993.2868	On-chip summing requested	N	N
Observation end date	2011-12-02T14:32:00	2011-12-02T14:39:53	Subarray requested	NONE	NONE
Read mode	TIMED	TIMED	Alternating exposures requested	N	N
			[s] Primary exposure time	0.000000	3.2

2.3 Aspect





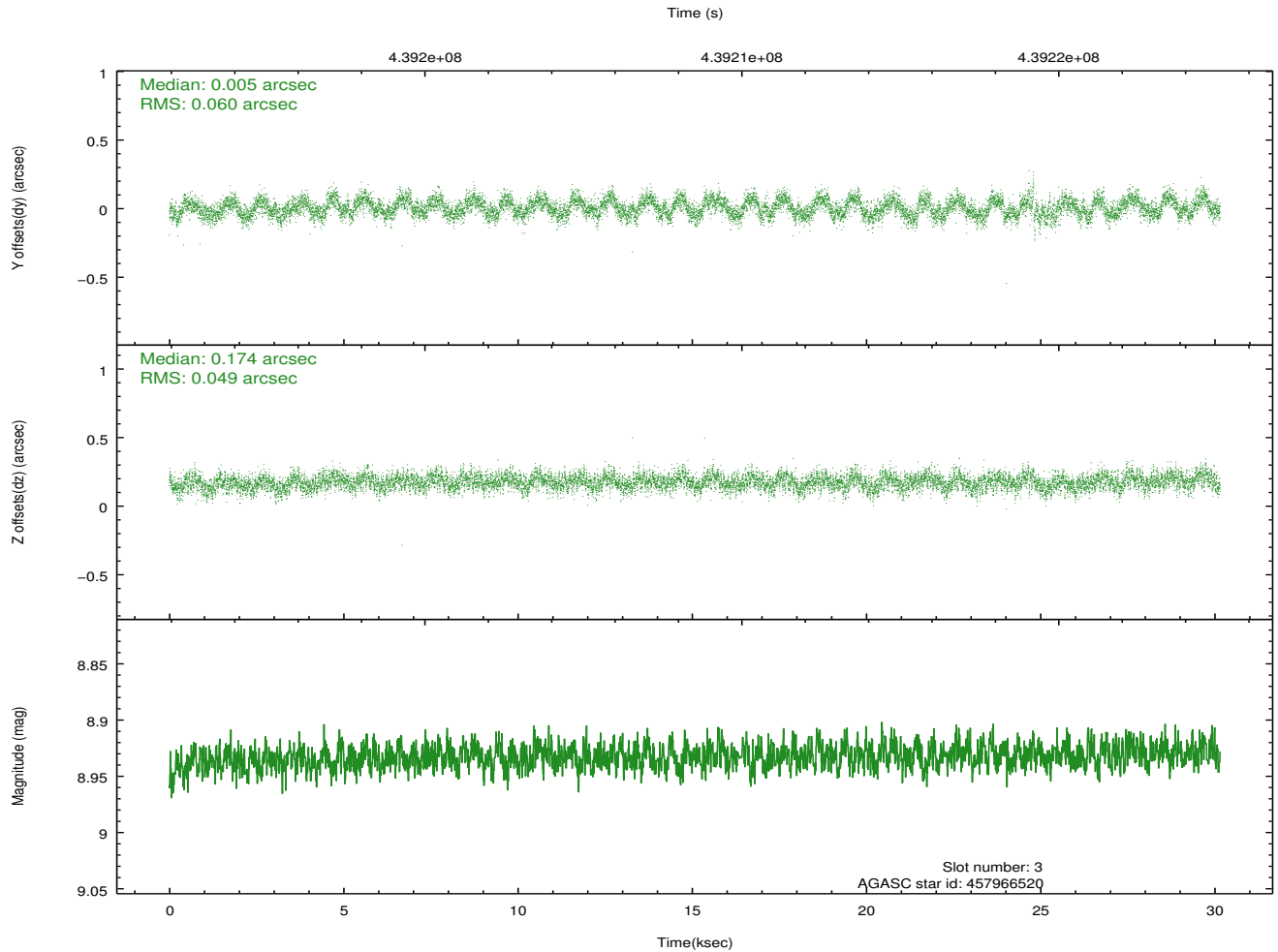
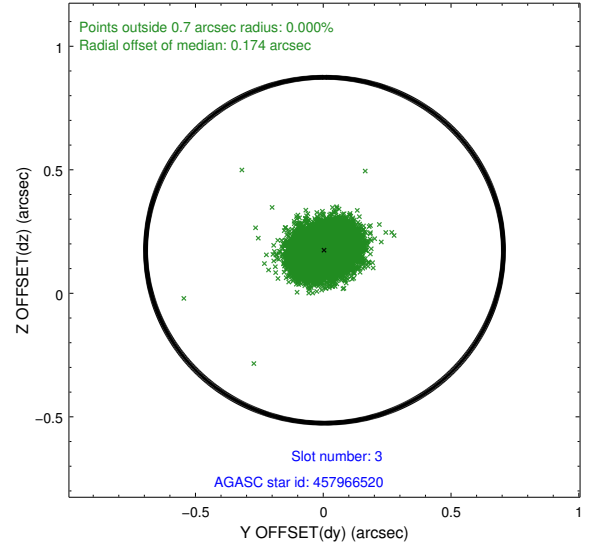
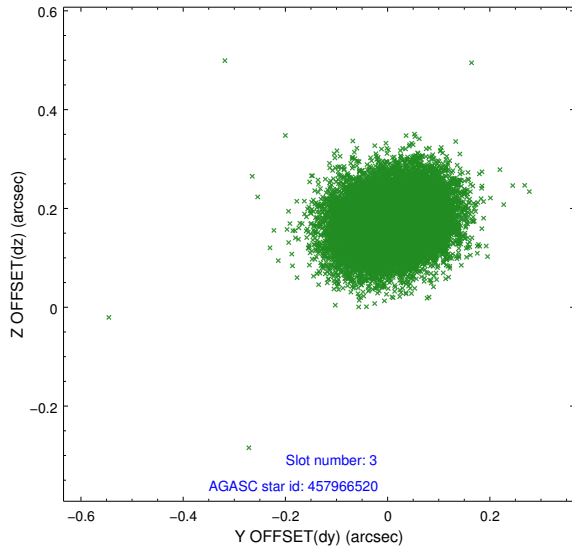
Slot Statistics

slot	status	id	mag	n_pts	med_dy	med_dz	dr1	dr2	ra	dec	mean_y	mean_z
0	FID	ACIS-S-2	6.95	7354	-0.054	-0.029	0.017	0.026	0.000000	0.000000	-764.67	-1735.65
1	FID	ACIS-S-4	7.03	7354	0.188	0.034	0.017	0.031	0.000000	0.000000	2148.82	172.81
2	FID	ACIS-S-5	7.07	7355	-0.163	0.002	0.018	0.025	0.000000	0.000000	-1817.53	166.54
3	GUIDE	457966520	8.93	14703	0.005	0.174	0.082	0.132	240.377980	49.977780	-1774.82	-419.37
4	GUIDE	457966752	9.38	14648	0.120	0.100	0.104	0.168	240.781242	49.922281	-872.01	-731.33
5	GUIDE	458360768	9.14	14695	-0.067	-0.106	0.104	0.174	240.951205	50.512724	-233.39	1333.54
6	GUIDE	458368224	9.76	14688	0.002	-0.174	0.113	0.186	240.843713	50.690932	-402.10	1999.51
7	GUIDE	458372168	9.50	14696	-0.061	0.008	0.095	0.159	242.026569	50.719384	2290.01	1805.00

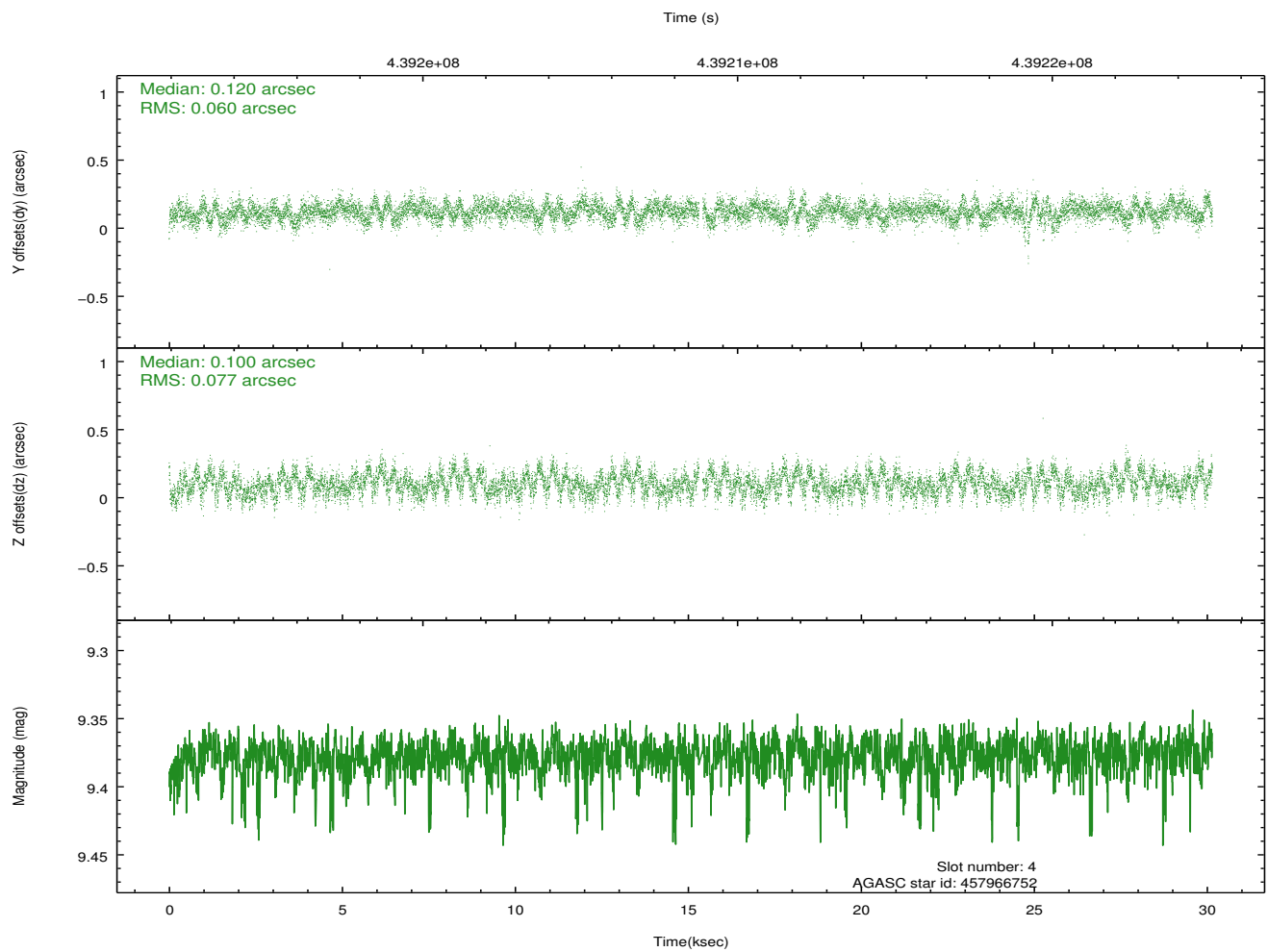
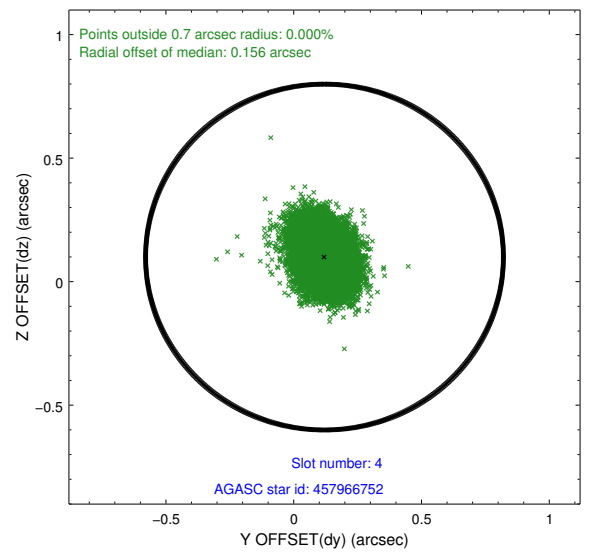
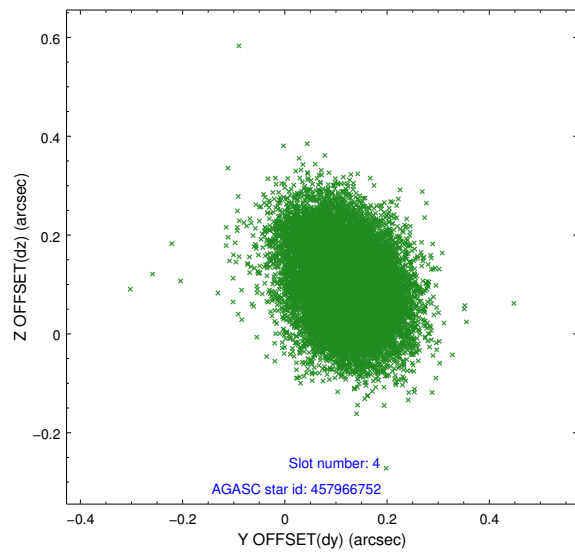
∞

2.4 Star Slots

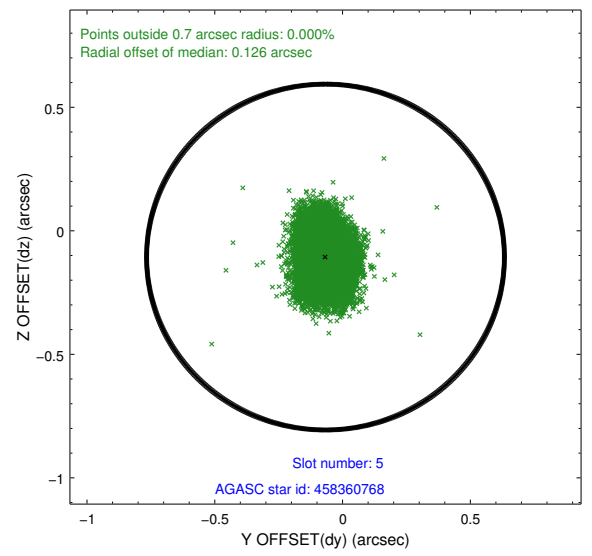
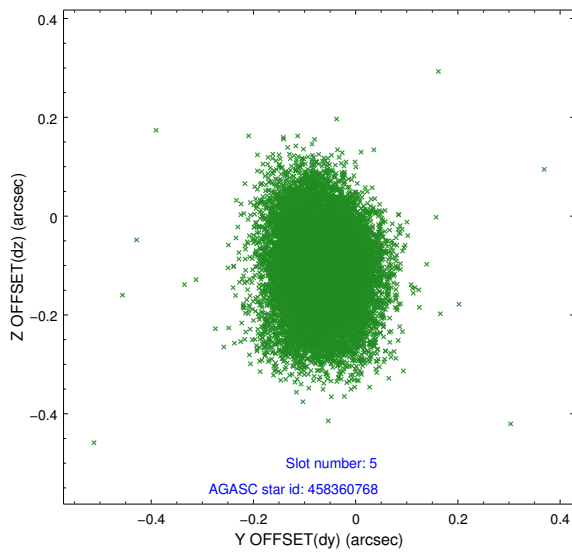
2.4.1 Slot 3



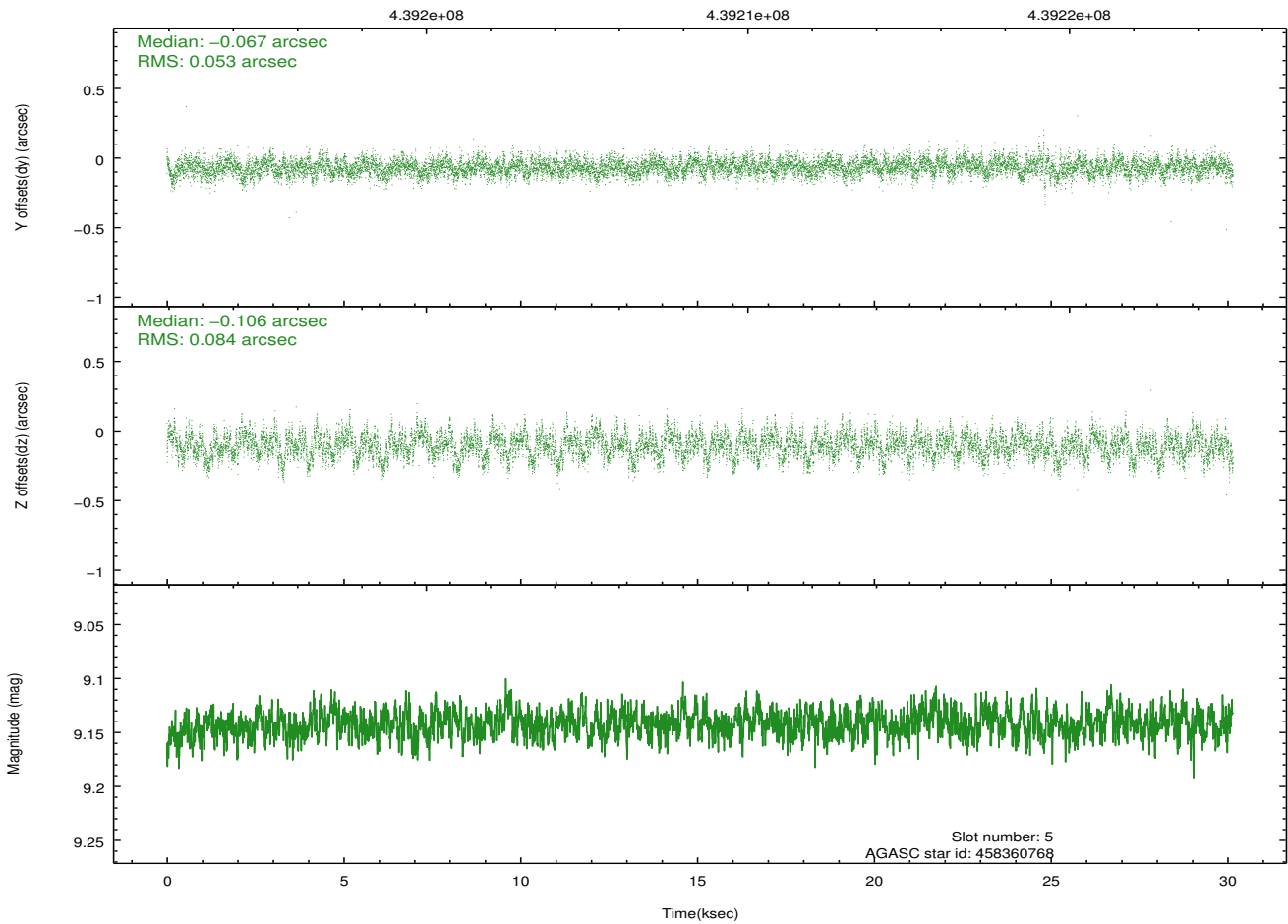
2.4.2 Slot 4



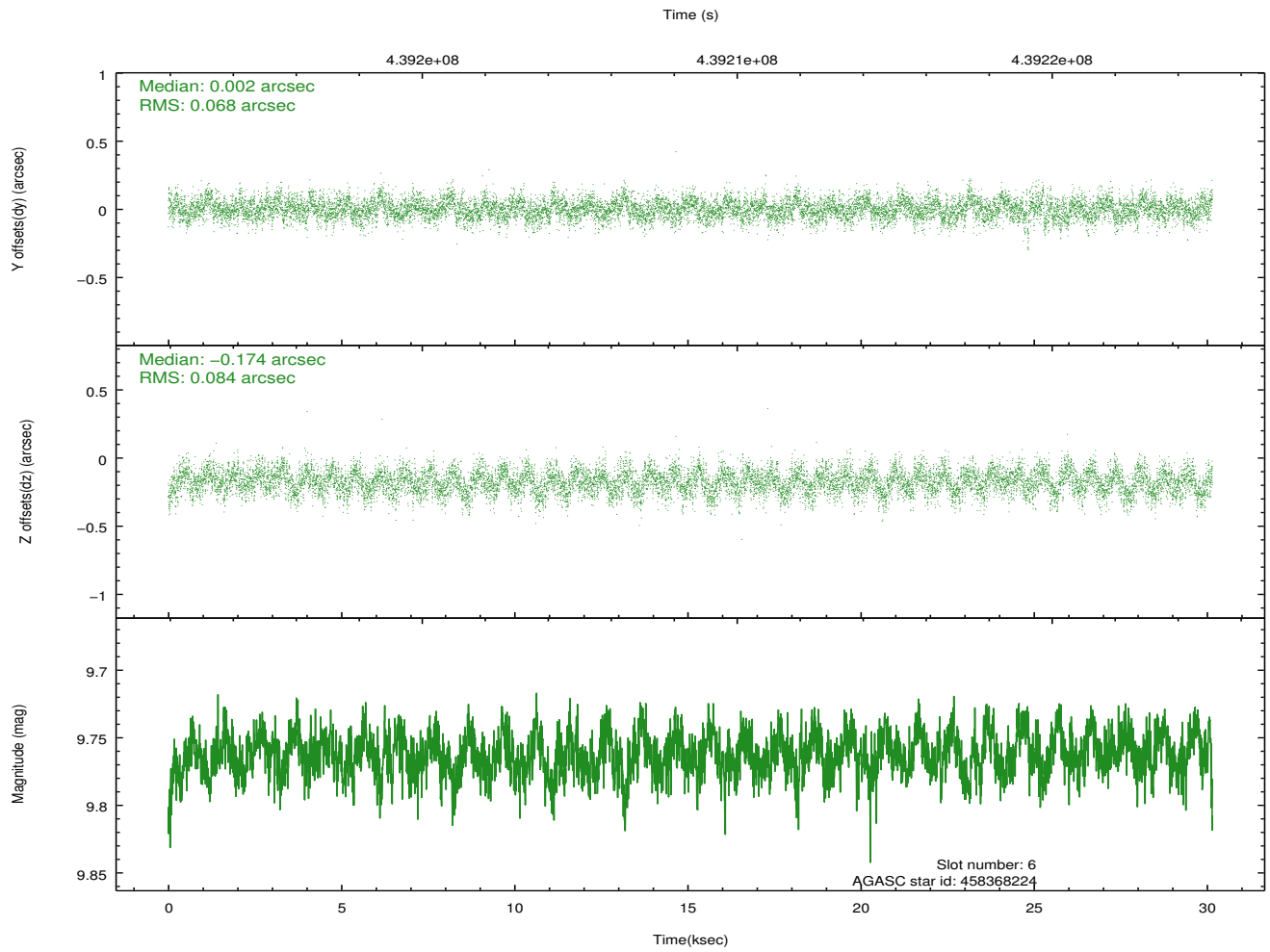
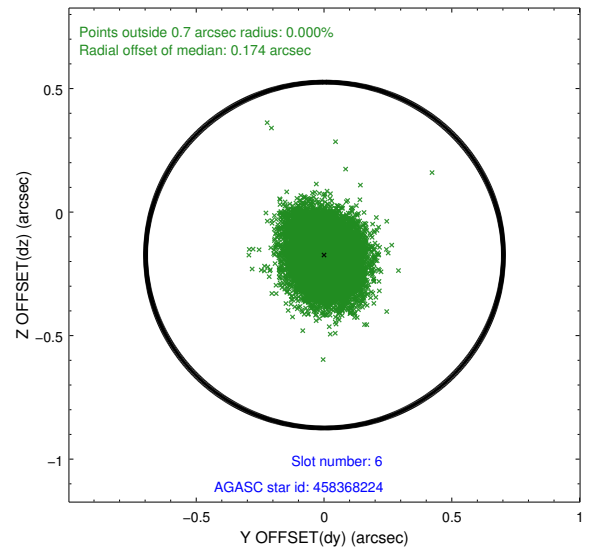
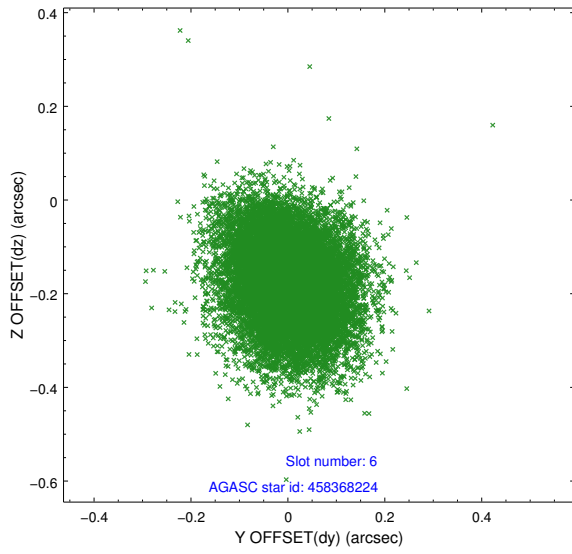
2.4.3 Slot 5



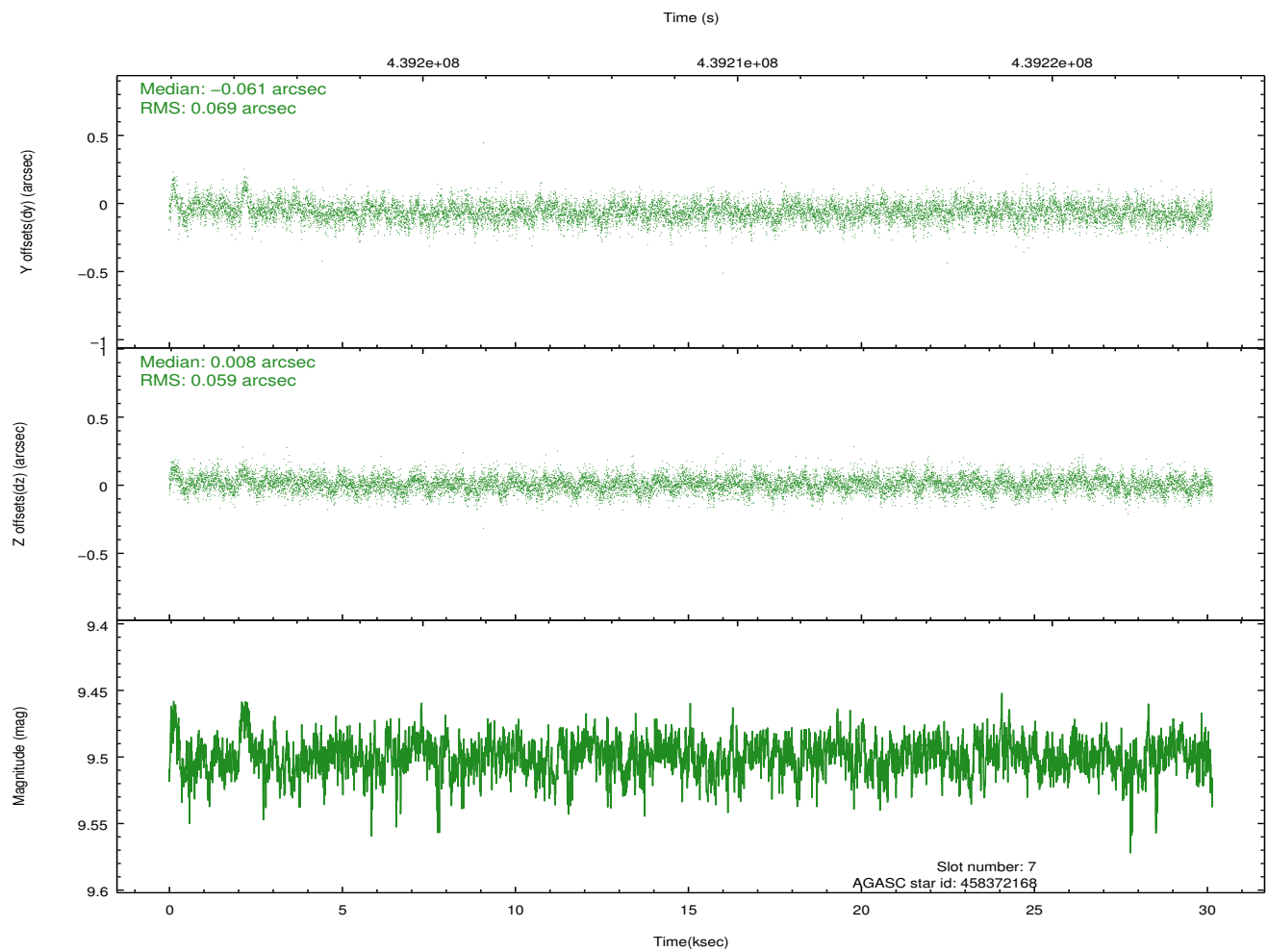
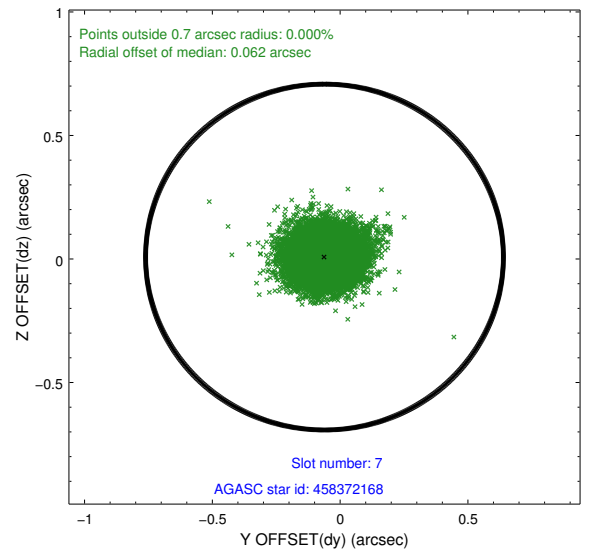
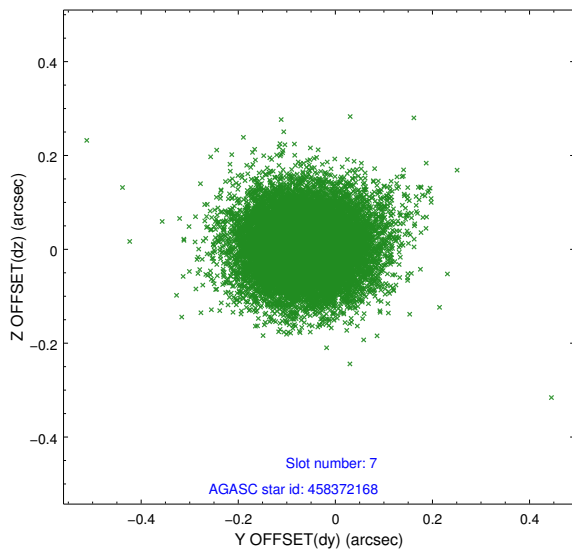
Time (s)



2.4.4 Slot 6

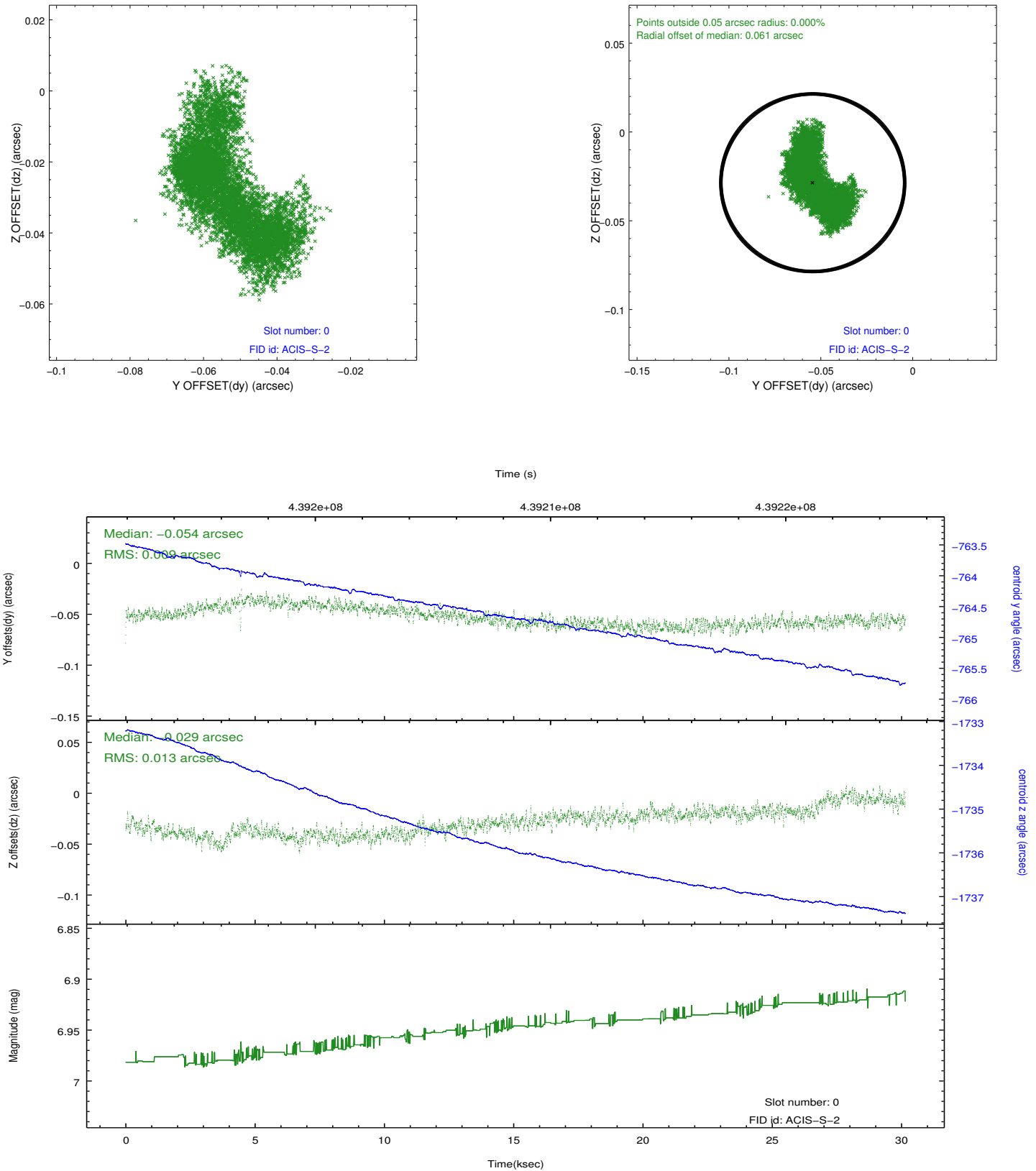


2.4.5 Slot 7

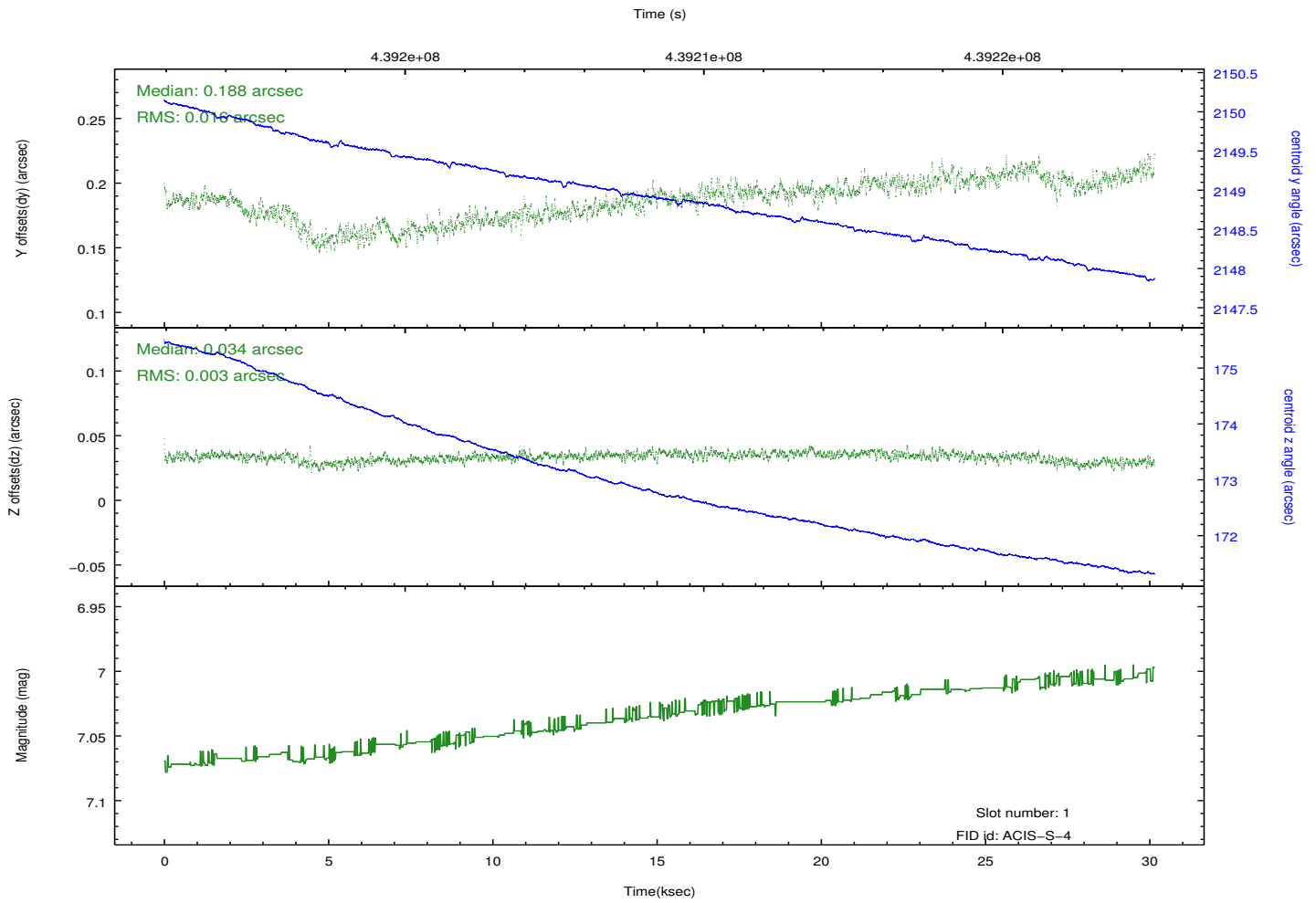
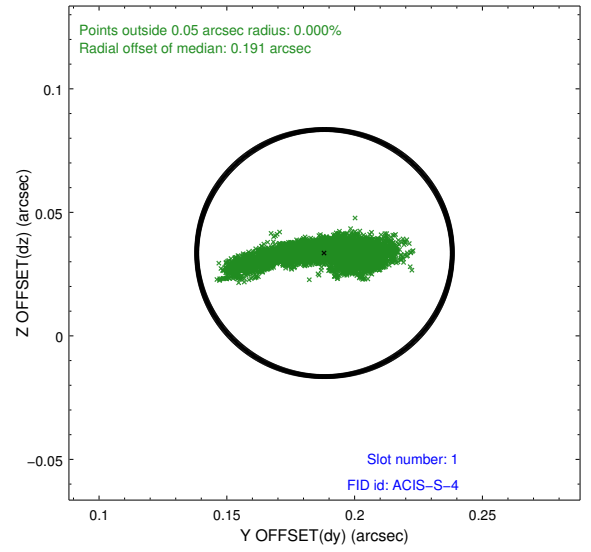
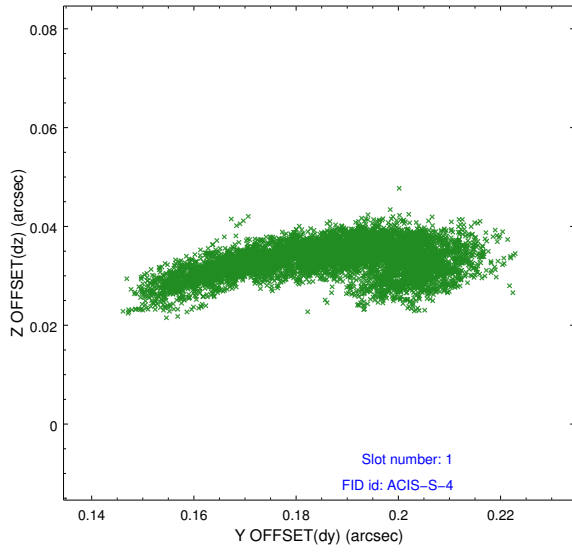


2.5 FID Slots

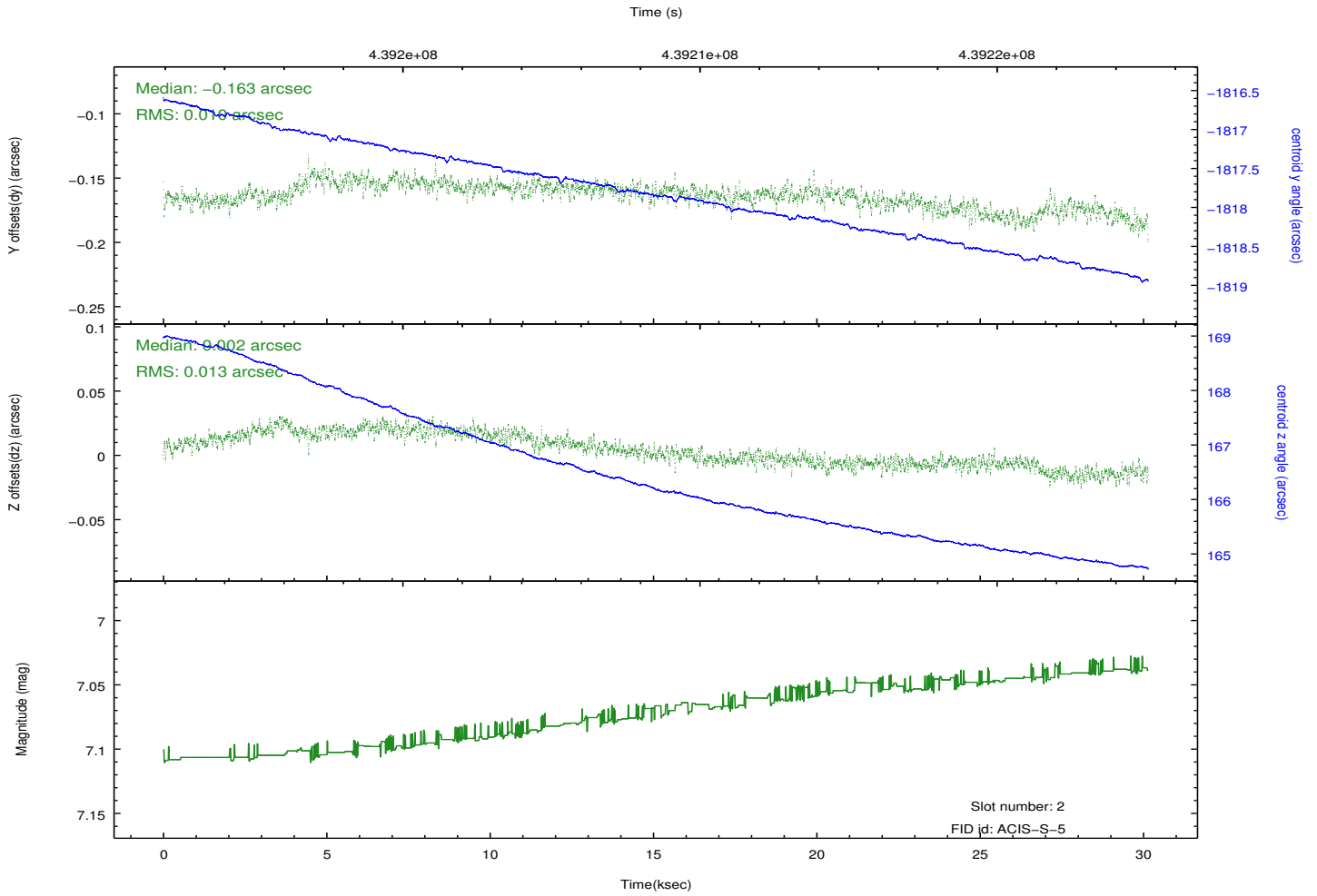
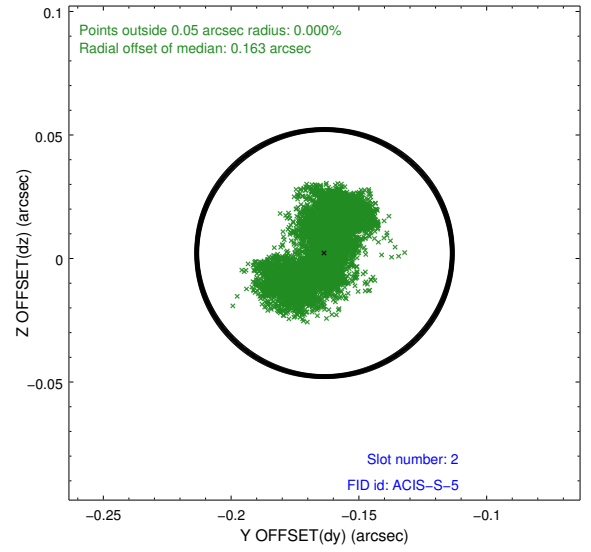
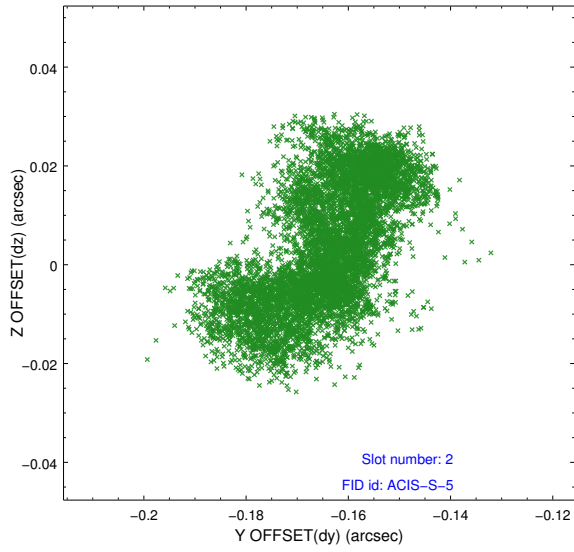
2.5.1 Slot 0



2.5.2 Slot 1



2.5.3 Slot 2



A Summary

A.1 Status

V&V Scientist	Jen Lauer
V&V Date (YYYY-MM-DD)	2012.02.29
V&V Edition	1
V&V Disposition and Status	OK
V&V Charge Time	29.961151266336

A.2 Comments