

# V&V Reference Report

## L2 ASCDS Version : 8.4.3

Observation 12907 - L2 Version 2  
Chandra X-Ray Center

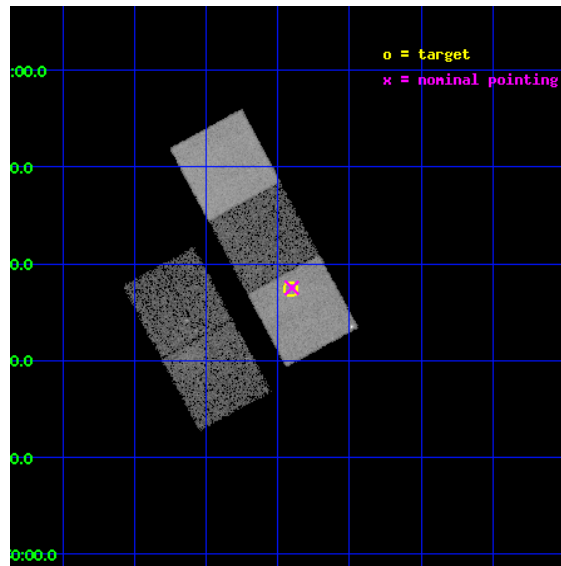
L2 Processing Date : Feb 28 2012

## Contents

<b>1</b>	<b>Front</b>	<b>2</b>
<b>2</b>	<b>OBI</b>	<b>3</b>
2.1	OBI . . . . .	3
2.1.1	Images . . . . .	3
2.1.2	Bias . . . . .	3
2.1.3	Parameters . . . . .	4
2.1.4	Events . . . . .	4
2.2	Compared Parameters . . . . .	5
2.3	Aspect . . . . .	6
2.4	Star Slots . . . . .	9
2.4.1	Slot 3 . . . . .	9
2.4.2	Slot 4 . . . . .	10
2.4.3	Slot 5 . . . . .	11
2.4.4	Slot 6 . . . . .	12
2.4.5	Slot 7 . . . . .	13
2.5	FID Slots . . . . .	14
2.5.1	Slot 0 . . . . .	14
2.5.2	Slot 1 . . . . .	15
2.5.3	Slot 2 . . . . .	16
<b>A</b>	<b>Summary</b>	<b>17</b>
A.1	Status . . . . .	17
A.2	Comments . . . . .	17

# 1 Front

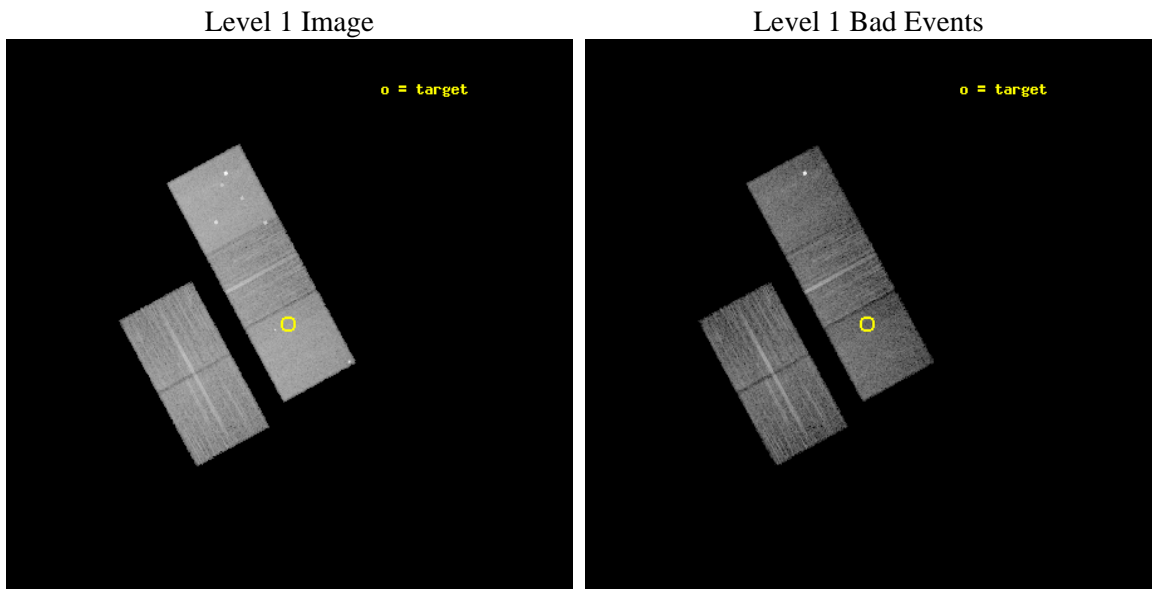
seq_num	801044	Sequence number
obs_id	12907	Observation id
title	Abell 1882: A Proto-cluster at Low Redshift	Proposal title
observer	Professor Christopher Miller	Principal investigator
object	A1882b	Source name
dtcycle	0	&#160
cycle	P	events from which exps? Prim/Second/Both
ra_targ	213.602083	Observer's specified target RA [deg]
dec_targ	-0.377194	Observer's specified target Dec [deg]
ra_nom	213.60061576764	Nominal RA [deg]
dec_nom	-0.3745597946916	Nominal Dec [deg]
roll_nom	61.589004916551	Nominal Roll [deg]
revision	2	Processing version of data
ontime	13373.400102854	Sum of GTIs [s]
livetime	13198.666785156	Livetime [s]
ontime2	13373.400102854	Sum of GTIs [s]
ontime3	13373.400102854	Sum of GTIs [s]
ontime5	13373.400102854	Sum of GTIs [s]
ontime6	13373.400102854	Sum of GTIs [s]
ontime7	13373.400102854	Sum of GTIs [s]
l2events	140870	Number of level 2 events



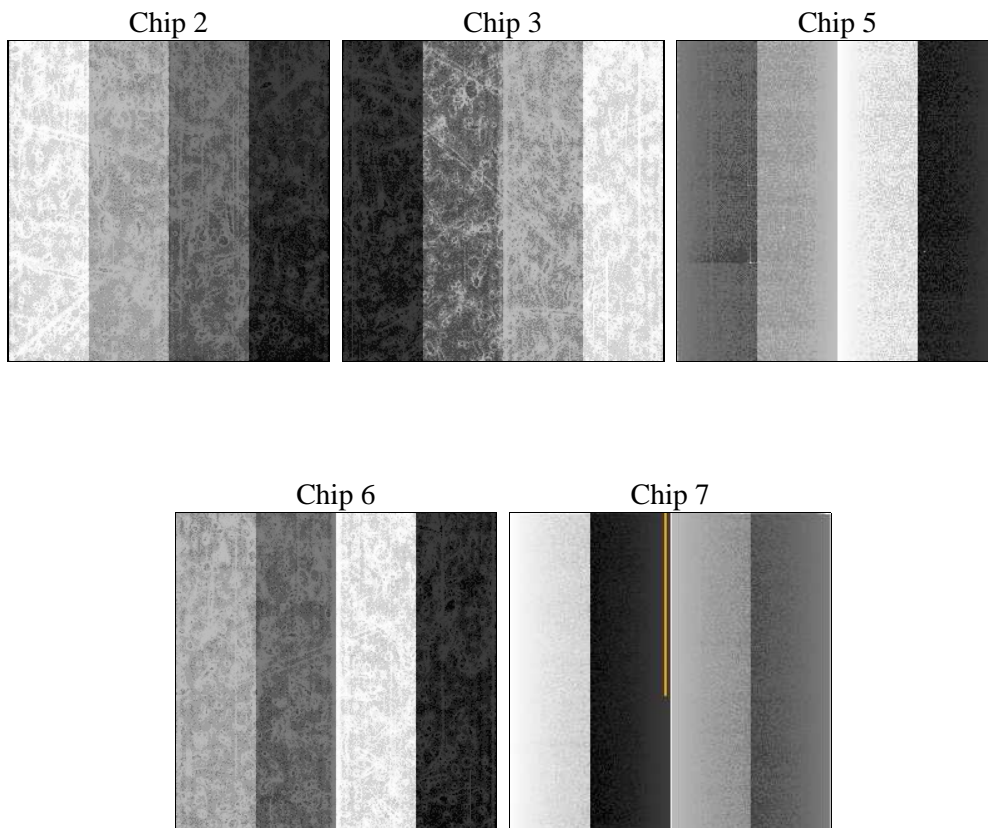
## 2 OBI

### 2.1 OBI

#### 2.1.1 Images



#### 2.1.2 Bias



### 2.1.3 Parameters

obi_num	0	Obi number	sched_exp_time	13333.333000	[s] Scheduled observation exposure time
ascdsver	8.4.3	Processing system revision	ontime	13373.400102854	Sum of GTIs [s]
caldbver	4.4.8	&#160	ontime2	13373.400102854	Sum of GTIs [s]
date	2012-02-28T18:26:05	Date and time of file creation	ontime3	13373.400102854	Sum of GTIs [s]
revision	2	Processing version of data	ontime5	13373.400102854	Sum of GTIs [s]
			ontime6	13373.400102854	Sum of GTIs [s]
			ontime7	13373.400102854	Sum of GTIs [s]
			l1events	514635	Number of level 1 events

### 2.1.4 Events

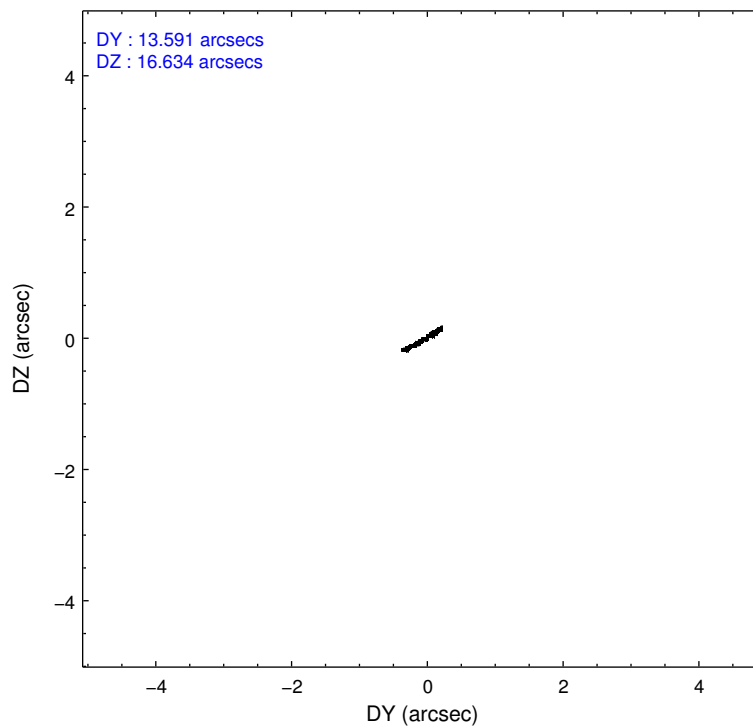
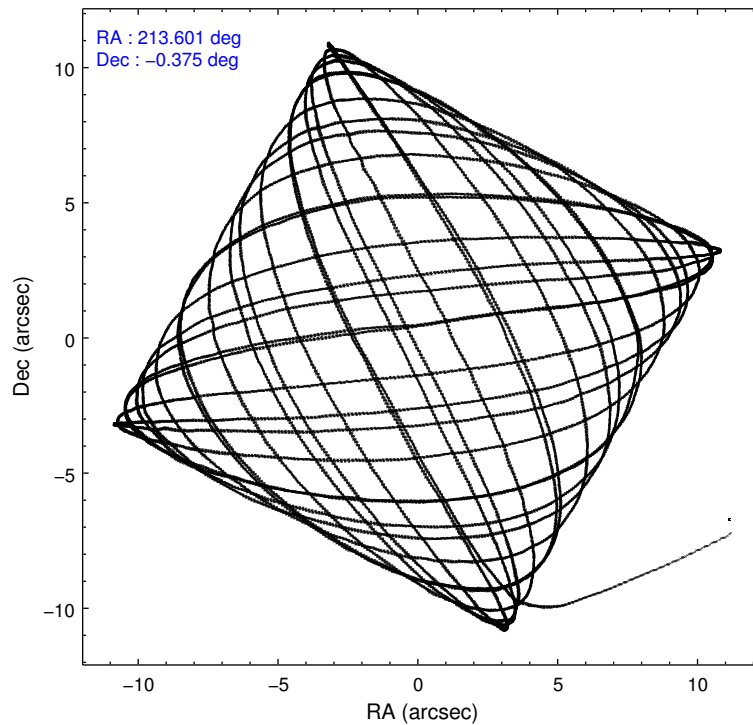
	ccd 2	ccd 3	ccd 5	ccd 6	ccd 7
level 1 events	85141	82853	143864	87636	115141
rejected events	74969	72686	74589	77305	63104
rejected %	88%	87%	51%	88%	54%

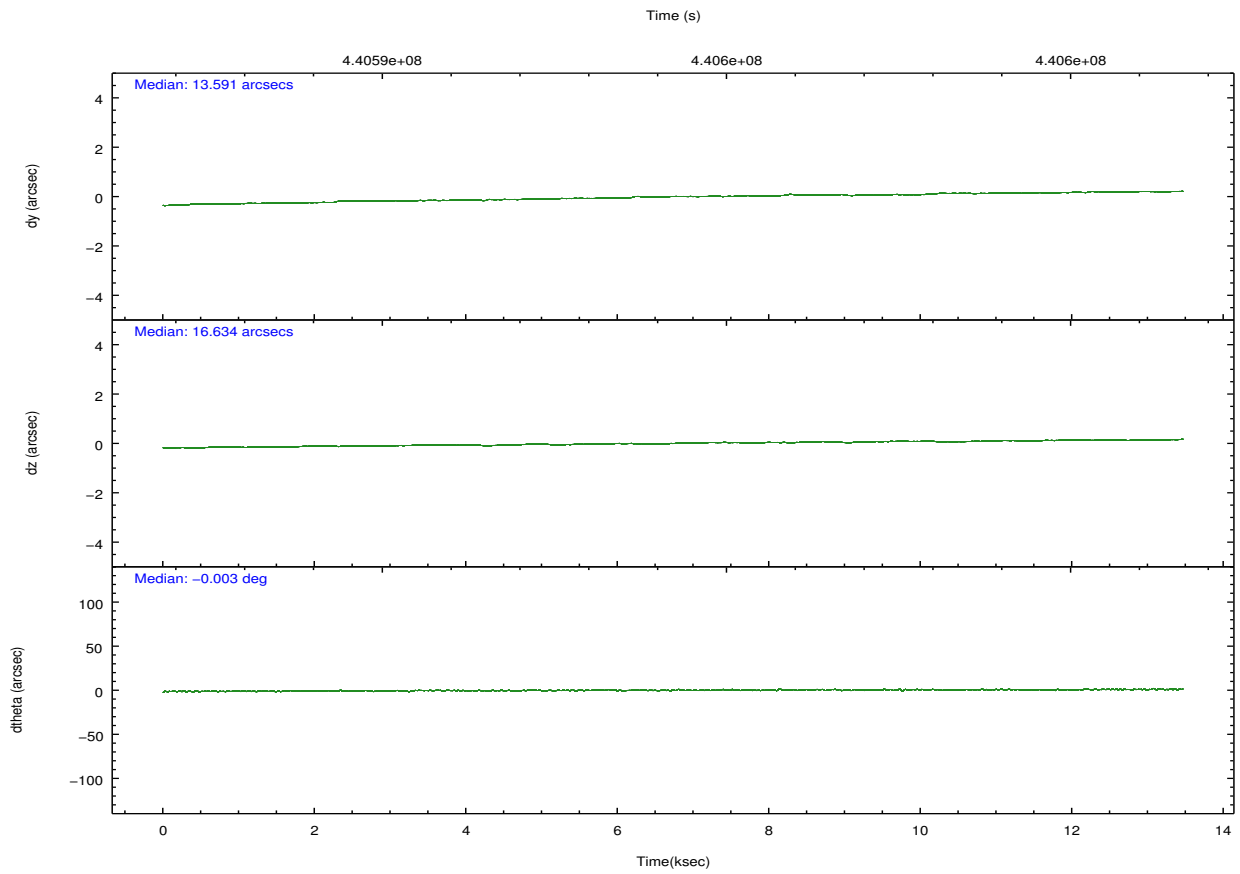
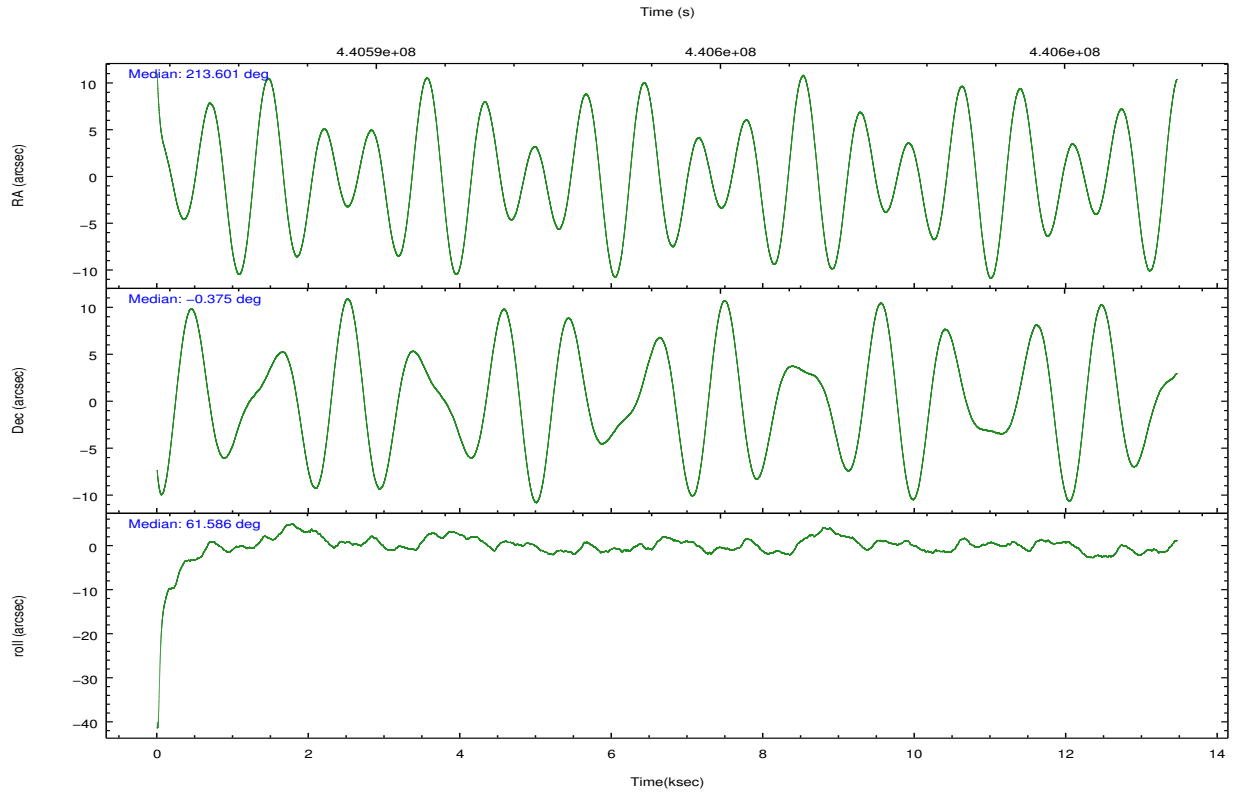
	ccd 2	ccd 3	ccd 5	ccd 6	ccd 7
grade 0 events	3836	4092	7805	3689	5121
	4%	4%	5%	4%	4%
grade 1 events	51	50	303	45	172
	0%	0%	0%	0%	0%
grade 2 events	2472	2110	20702	2295	10738
	2%	2%	14%	2%	9%
grade 3 events	1008	1026	2541	1044	4638
	1%	1%	1%	1%	4%
grade 4 events	987	1022	2419	1056	4559
	1%	1%	1%	1%	3%
grade 5 events	3732	4115	13064	4102	11769
	4%	4%	9%	4%	10%
grade 6 events	1878	1921	35834	2250	27004
	2%	2%	24%	2%	23%
grade 7 events	71177	68517	61196	73155	51140
	83%	82%	42%	83%	44%

## 2.2 Compared Parameters

Parameter	Planned	Actual	Parameter	Planned	Actual
Instrument	ACIS	ACIS	Obspar format version number	7	7
Detector	ACIS-23567	ACIS-23567	Obspar file type	PREDICTED	ACTUAL
Grating	NONE	NONE	Obspar update status	NONE	UPDATED
Data mode	VFAINT	VFAINT	CCD I0 on	N	N
Observation mode	POINTING	POINTING	CCD I1 on	N	N
[deg] Pointing RA	213.601737	213.6006157676397	CCD I2 on	O1	Y
[deg] Pointing Dec	-0.401869	-0.3745597946916007	CCD I3 on	Y	Y
[deg] Pointing Roll	61.432414	61.58900491655069	CCD S0 on	N	N
[mm] SIM focus pos	-0.684267	-0.6828225247311905	CCD S1 on	Y	Y
[mm] SIM defocus	0	0.001444936568705701	CCD S2 on	Y	Y
[mm] SIM translation stage pos	-190.132523	-190.1425803651734	CCD S3 on	Y	Y
[mm] SIM translation stage offset	0	0.01005778216563158	CCD S4 on	N	N
[s] Observation start time (MET)	440587623.184000	440586511.50866	CCD S5 on	N	N
Observation start date	2011-12-18T09:25:57	2011-12-18T09:08:31	Number of optional ACIS chips dropped	0	0
[s] Observation end time (MET)	440600957.184000	440601091.62193	On-chip summing requested	N	N
Observation end date	2011-12-18T13:08:11	2011-12-18T13:11:31	Subarray requested	NONE	NONE
Read mode	TIMED	TIMED	Alternating exposures requested	N	N
			[s] Primary exposure time	0.000000	3.1

## 2.3 Aspect



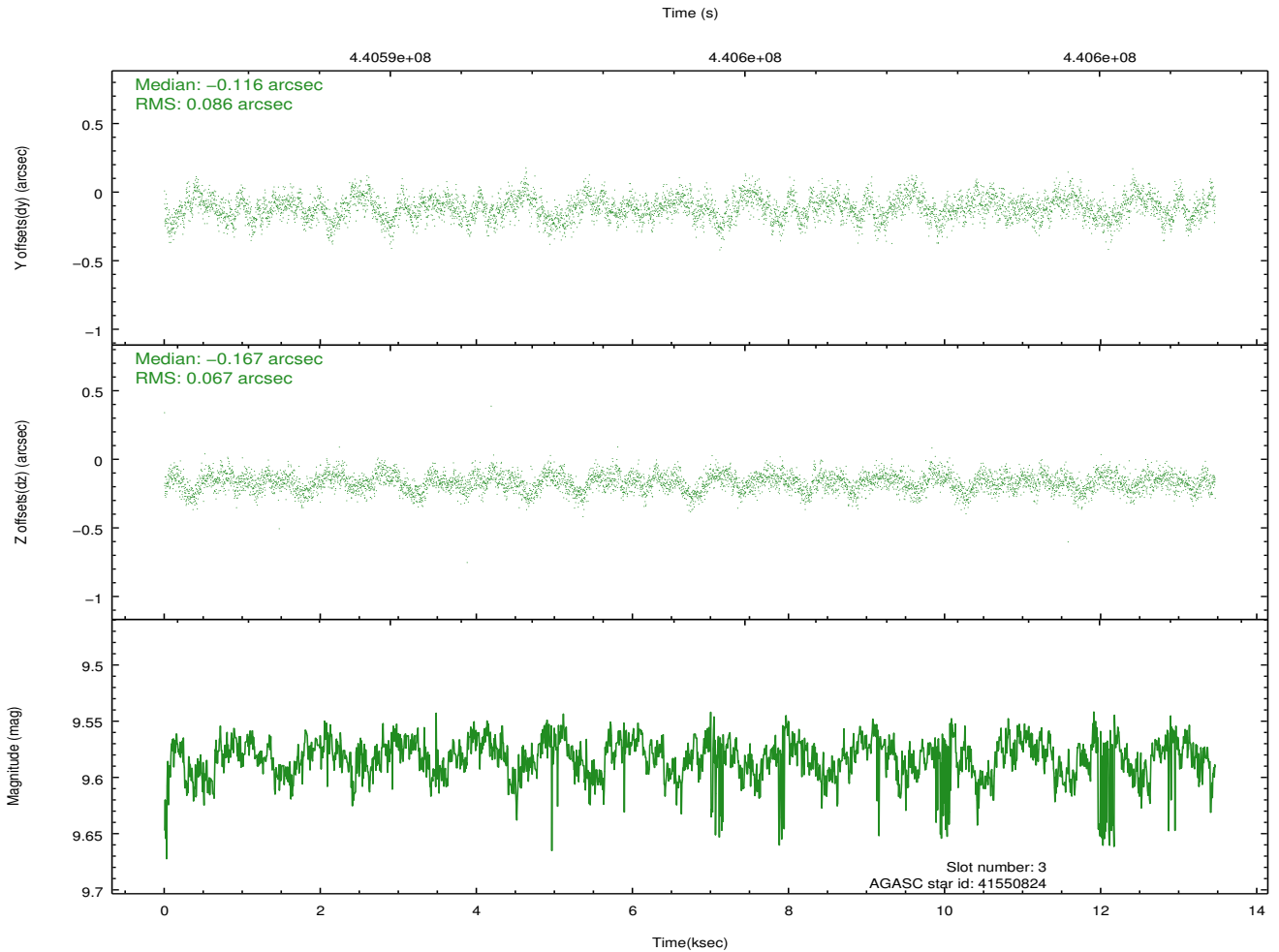
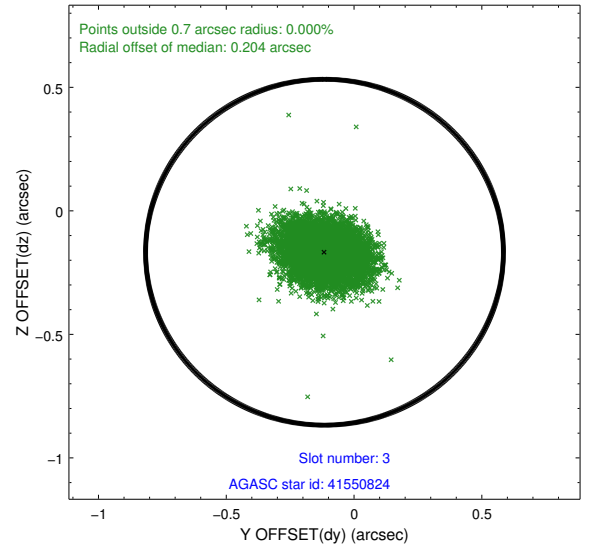
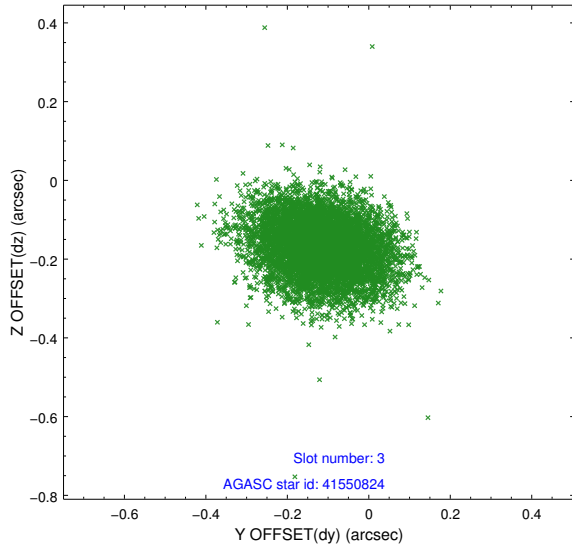


### Slot Statistics

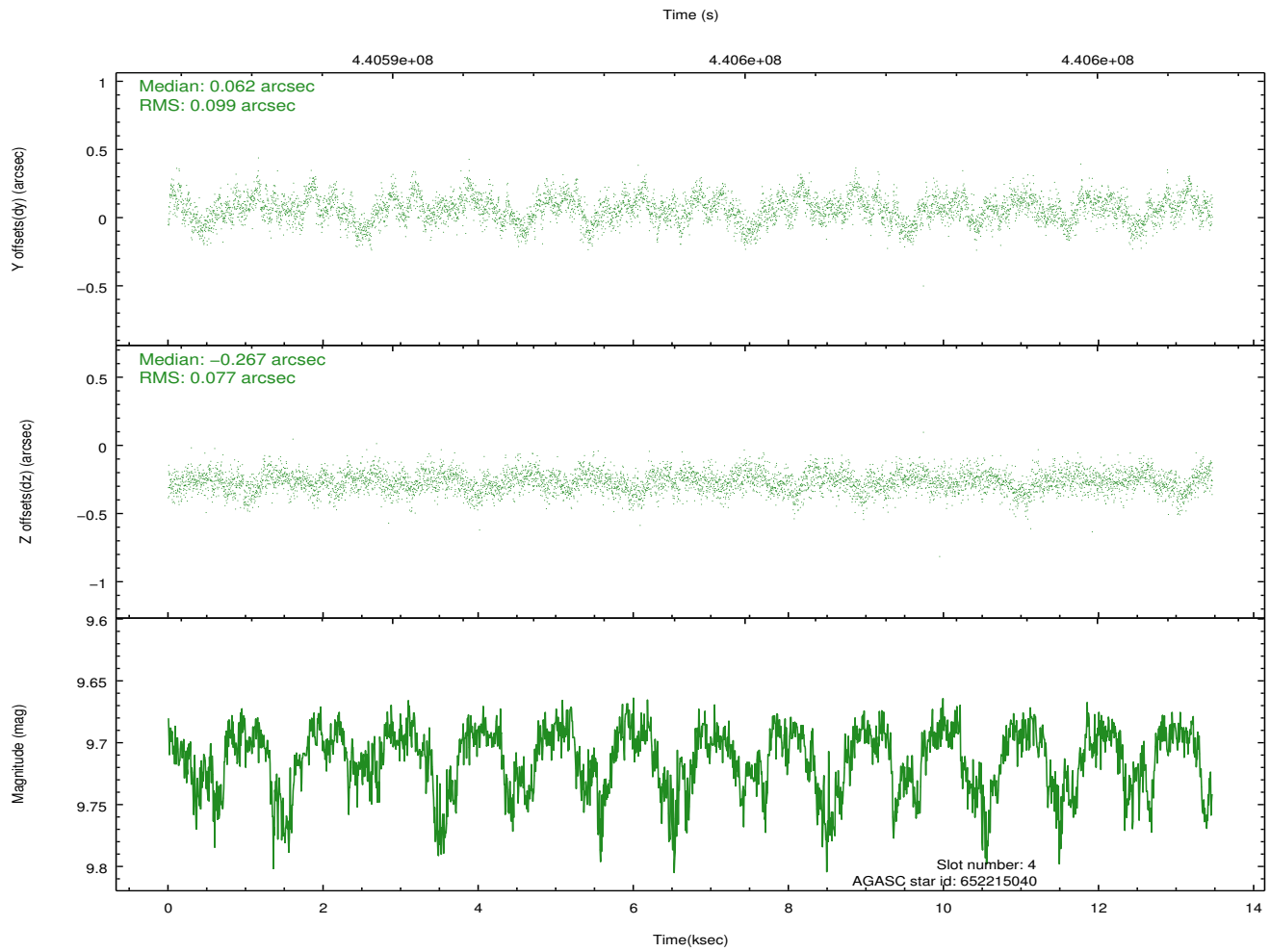
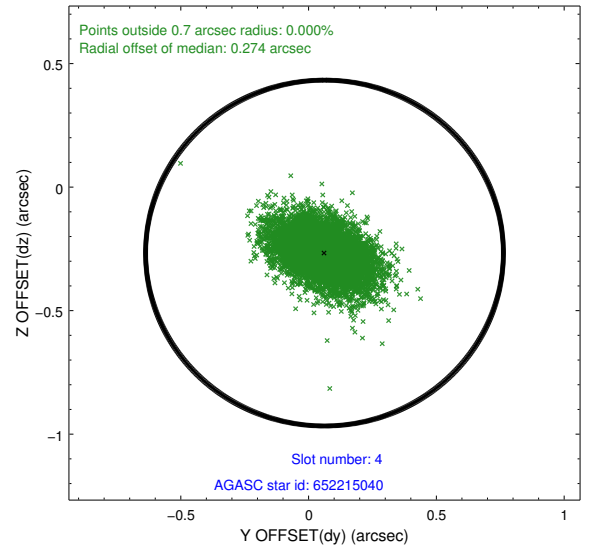
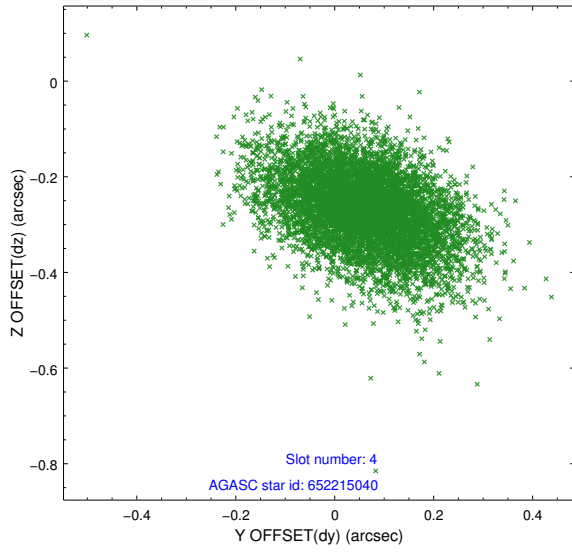
slot	status	id	mag	n_pts	med_dy	med_dz	dr1	dr2	ra	dec	mean_y	mean_z
0	FID	ACIS-S-2	6.89	3284	-0.045	-0.014	0.009	0.014	0.000000	0.000000	-766.56	-1738.00
1	FID	ACIS-S-4	6.98	3284	0.213	0.026	0.009	0.017	0.000000	0.000000	2146.84	170.11
2	FID	ACIS-S-5	7.01	3284	-0.199	-0.003	0.007	0.013	0.000000	0.000000	-1819.07	164.21
3	GUIDE	41550824	9.58	6557	-0.116	-0.167	0.116	0.189	213.709216	0.254022	2258.48	789.93
4	GUIDE	652215040	9.71	6554	0.062	-0.267	0.131	0.223	212.795459	-0.676910	-2257.34	2075.54
5	GUIDE	652215704	9.13	6566	0.149	0.114	0.101	0.162	213.594661	-0.601169	-642.16	-319.99
6	GUIDE	652223856	9.12	6563	-0.116	0.143	0.139	0.246	214.256332	-0.079315	2145.70	-1515.39
7	GUIDE	652224488	6.09	6568	0.029	0.174	0.095	0.162	213.419957	-0.845464	-1715.05	-191.90

## 2.4 Star Slots

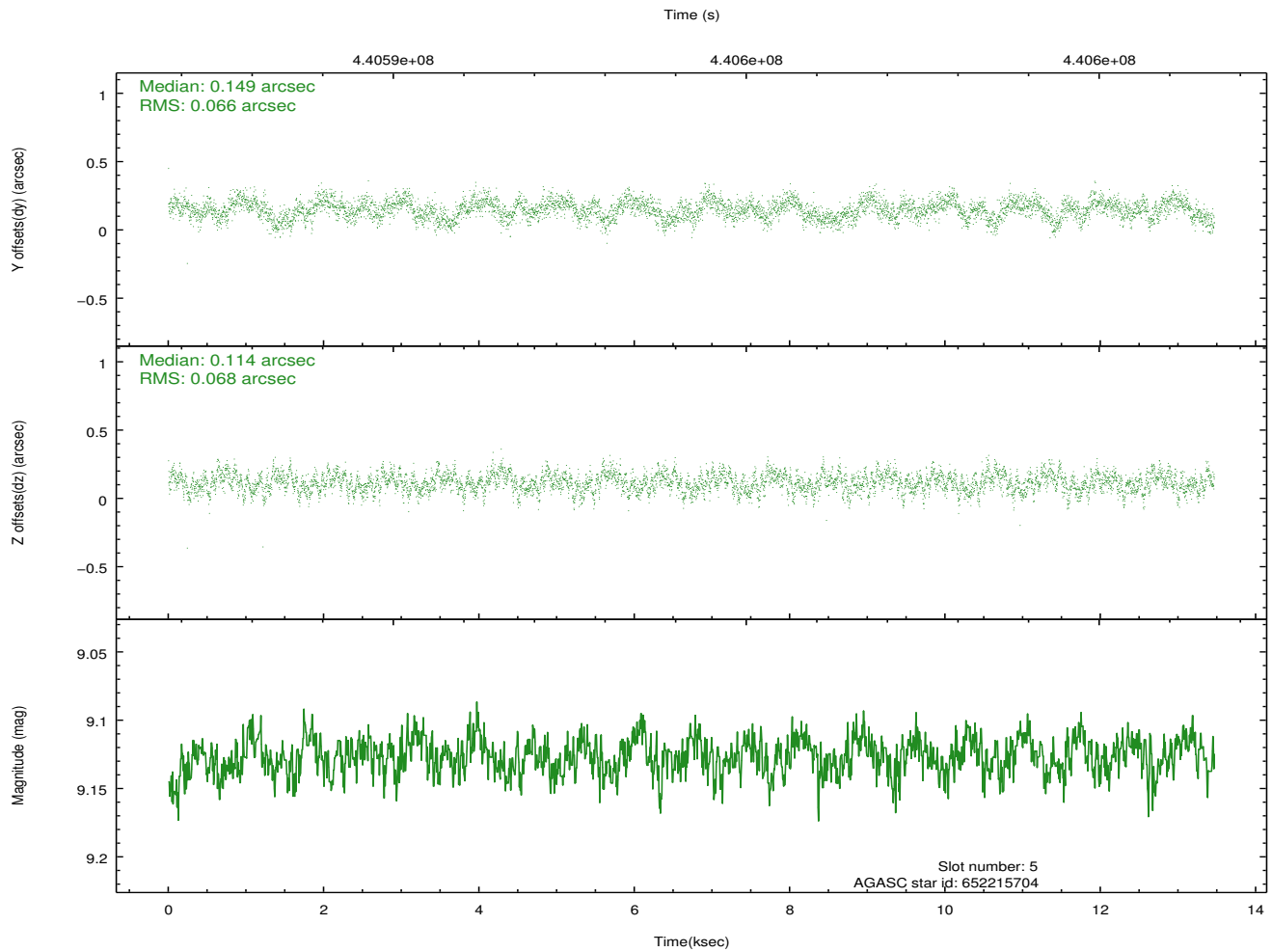
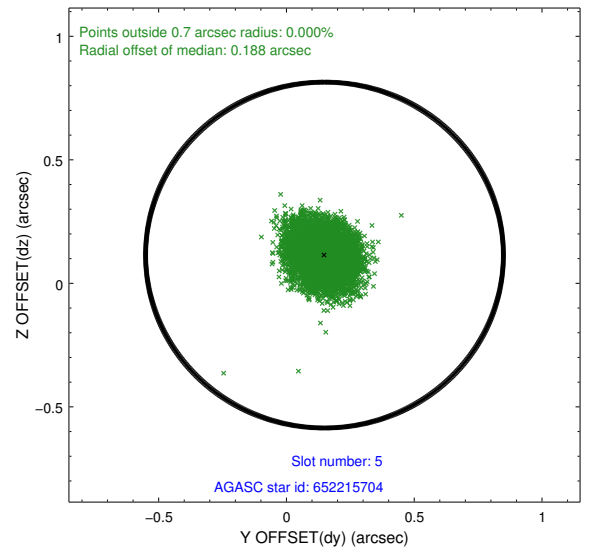
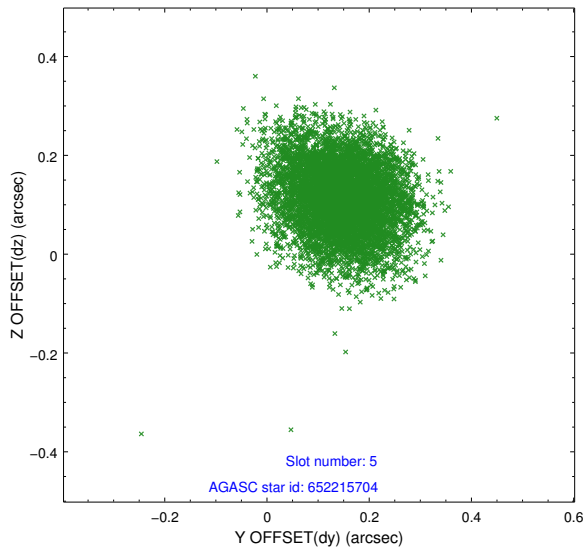
### 2.4.1 Slot 3



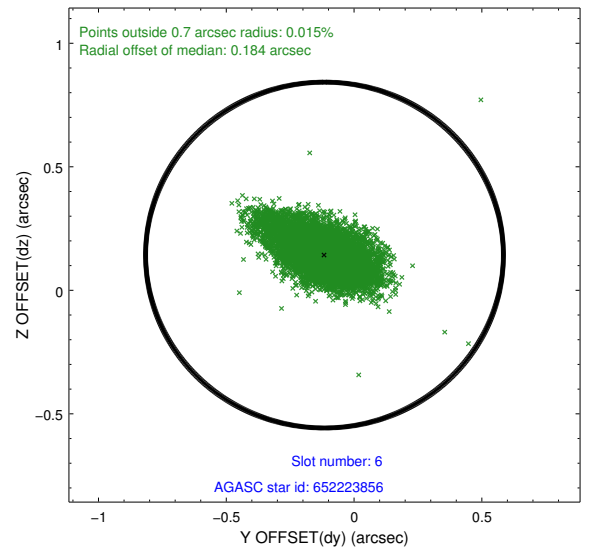
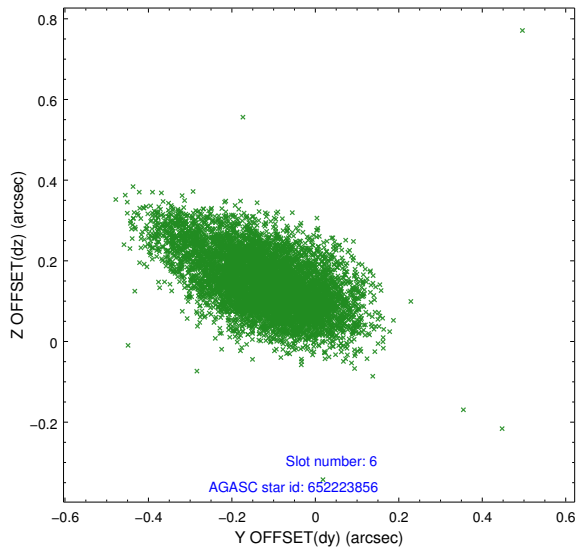
### 2.4.2 Slot 4



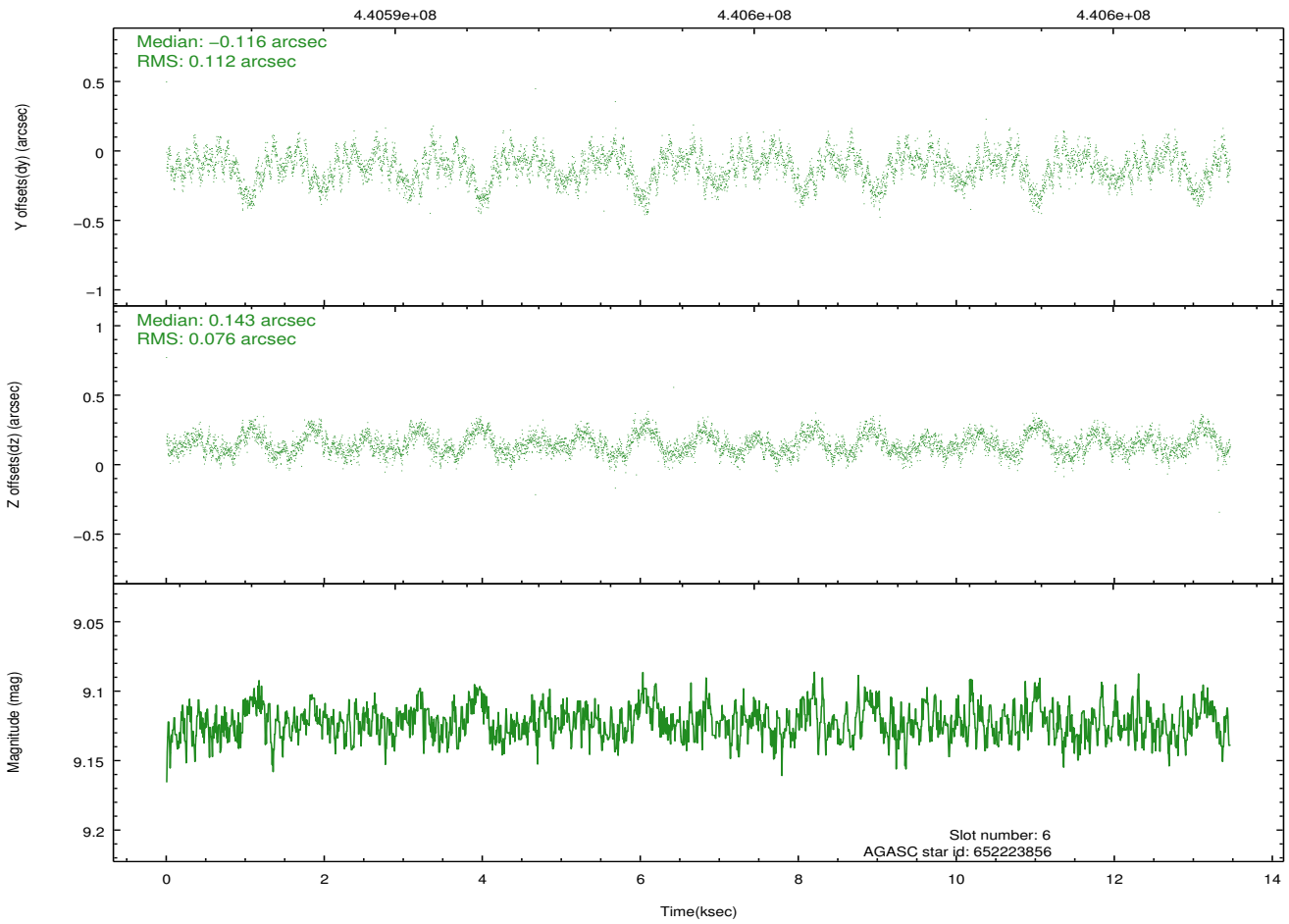
### 2.4.3 Slot 5



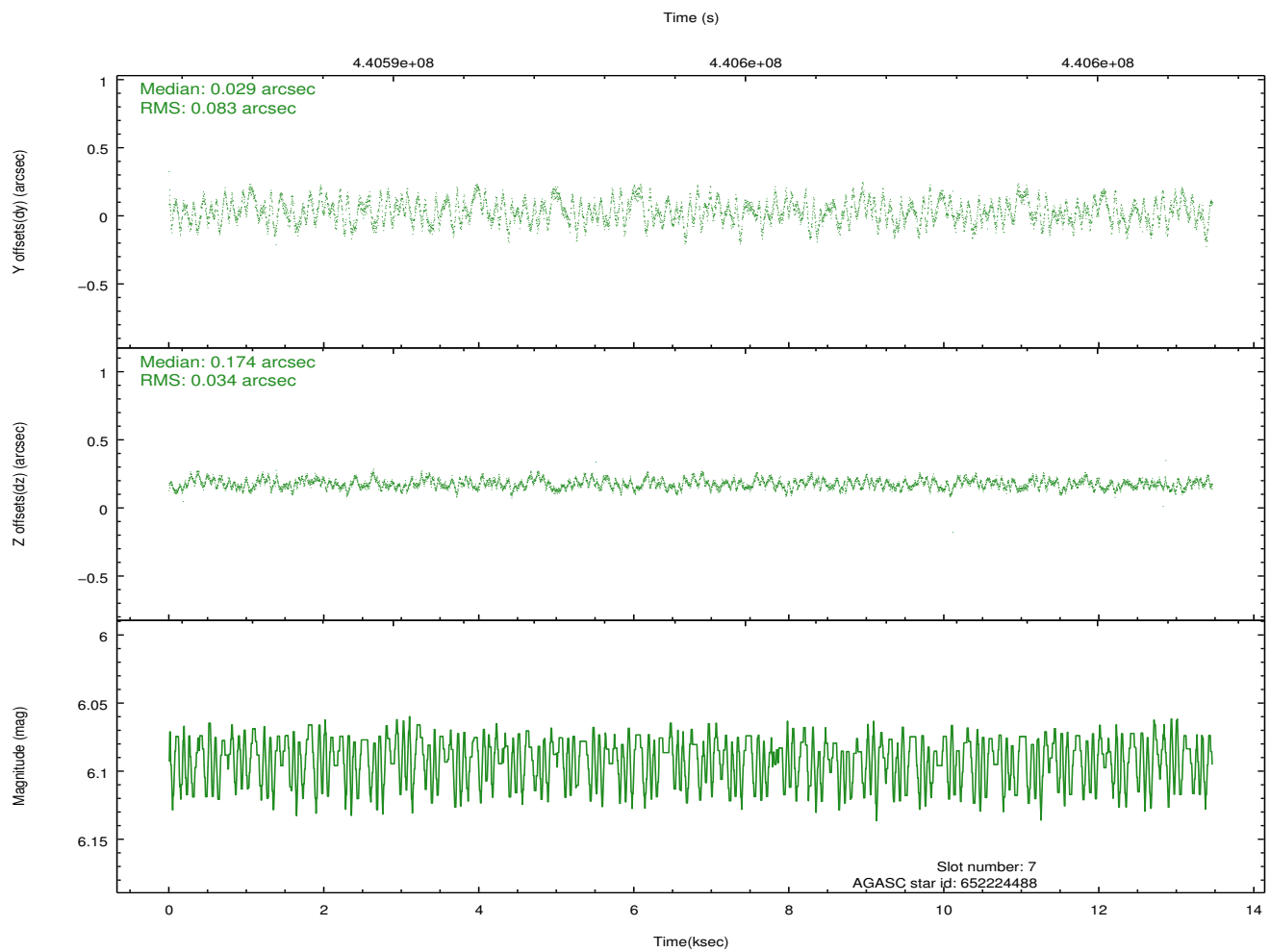
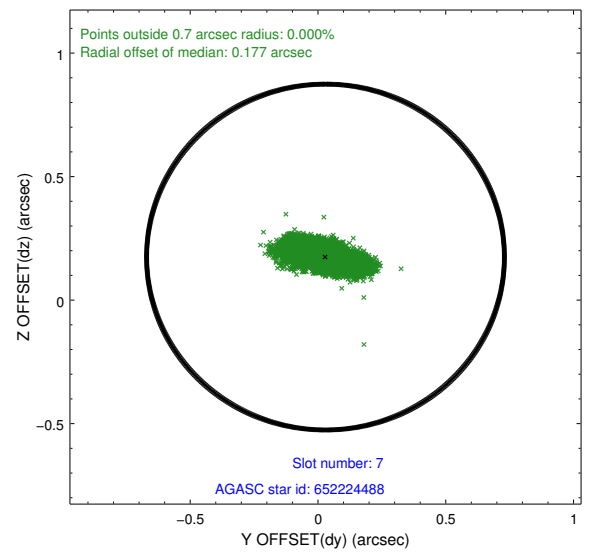
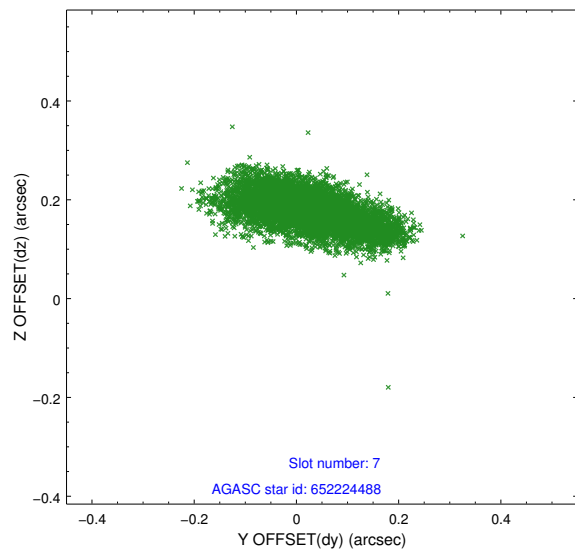
### 2.4.4 Slot 6



Time (s)

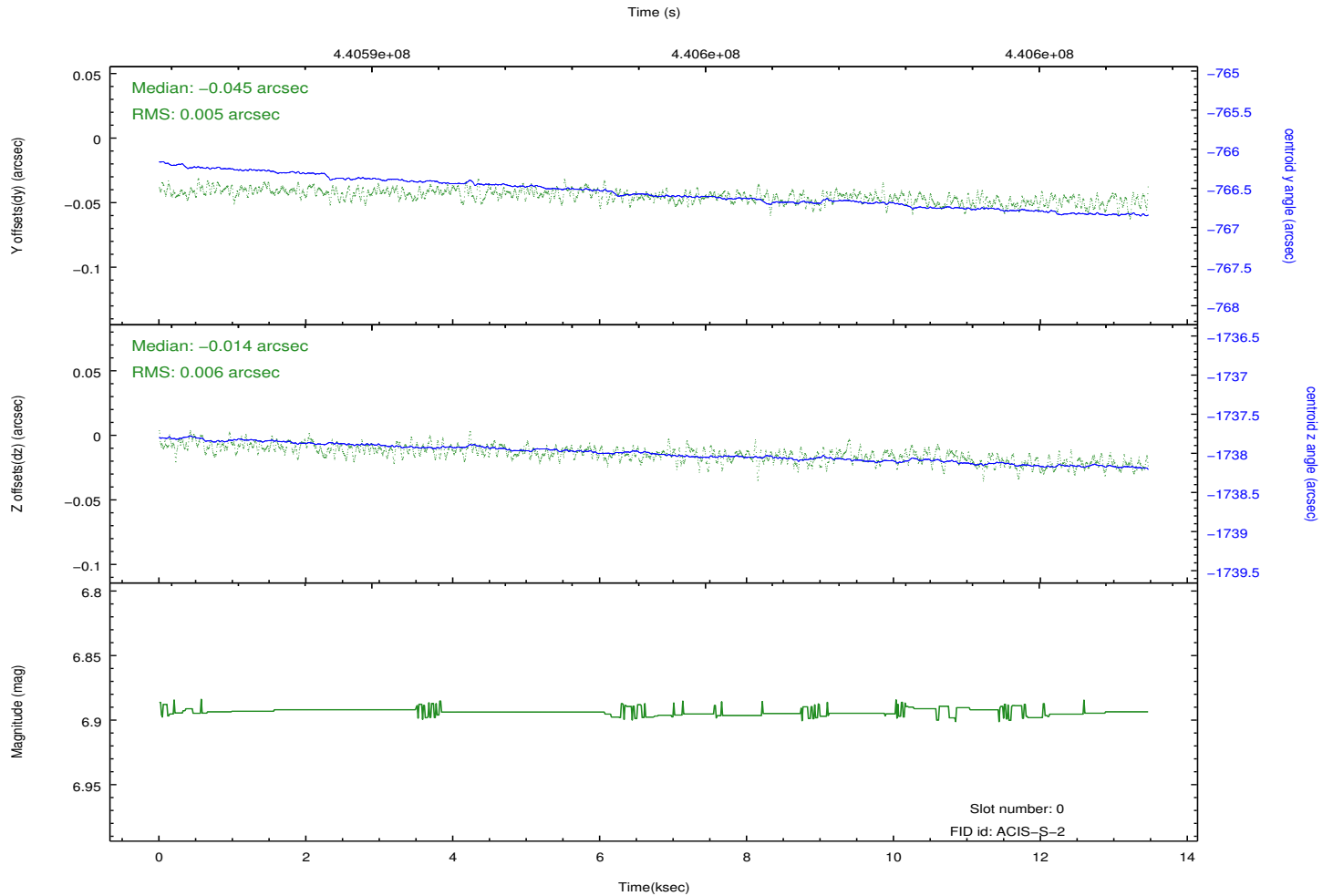
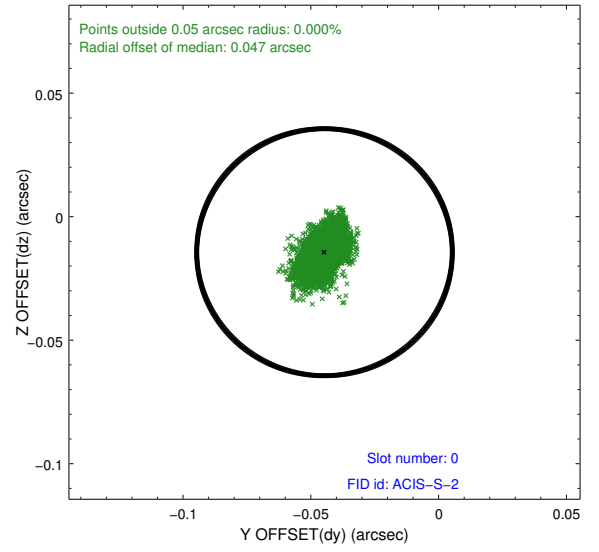
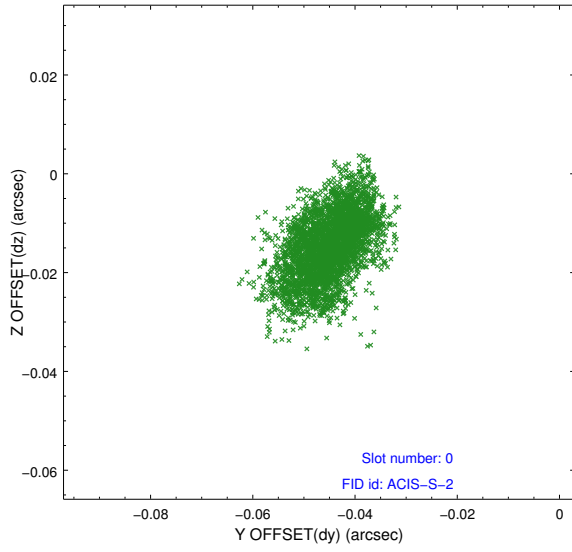


## 2.4.5 Slot 7

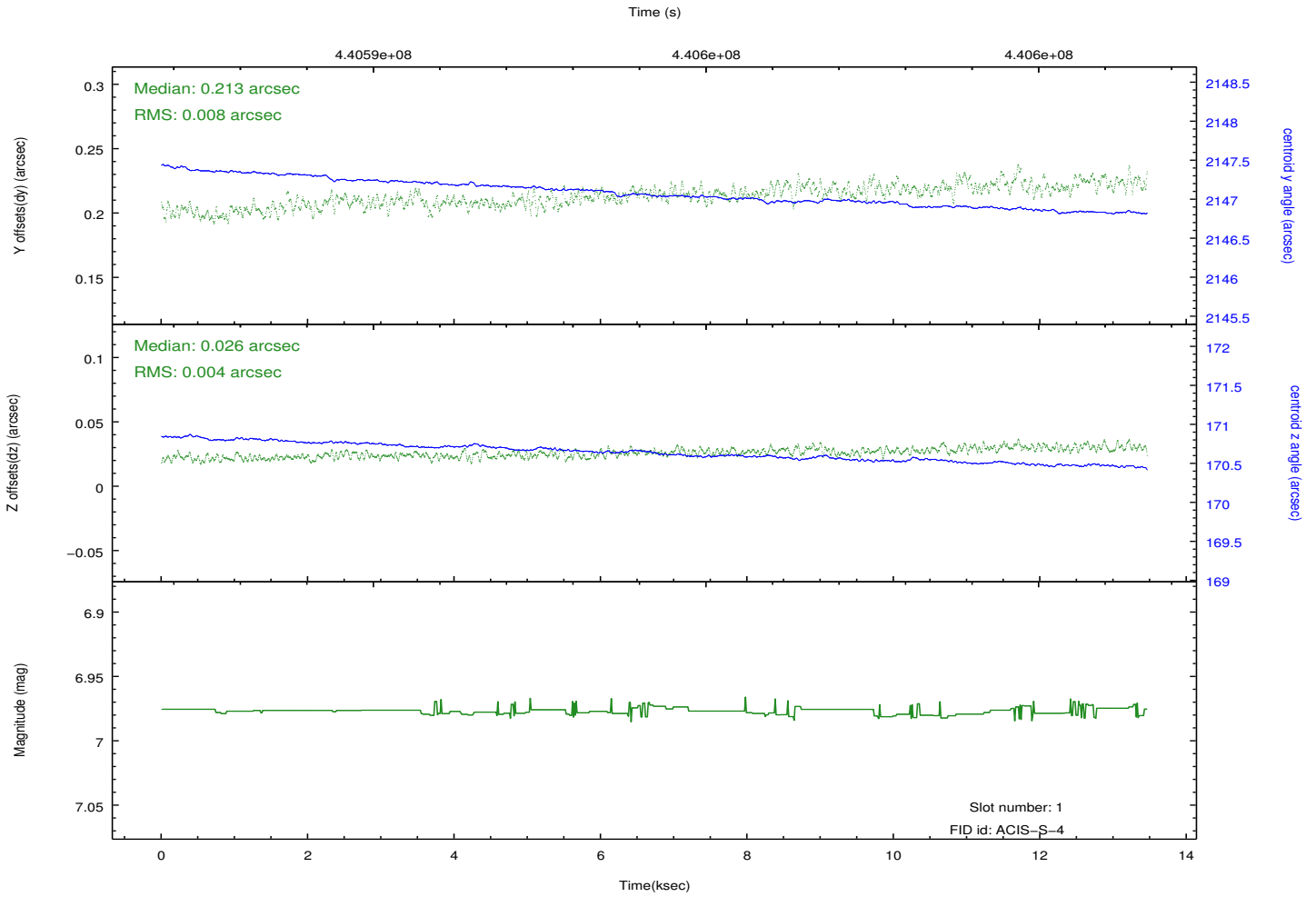
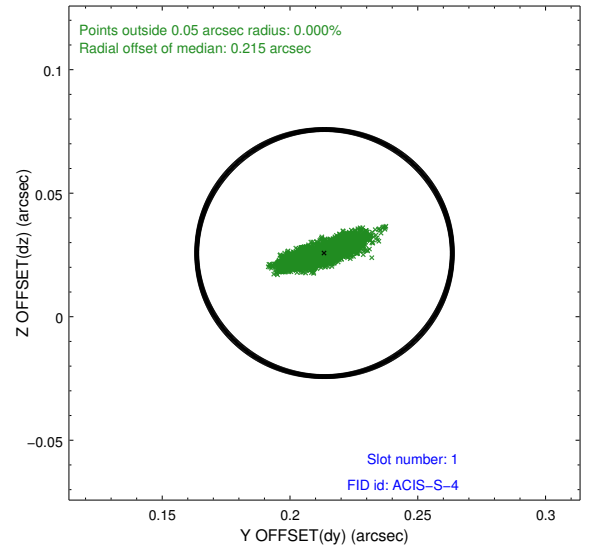
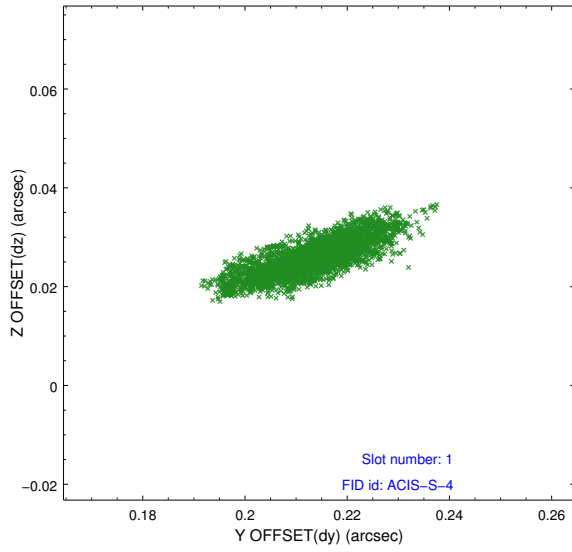


## 2.5 FID Slots

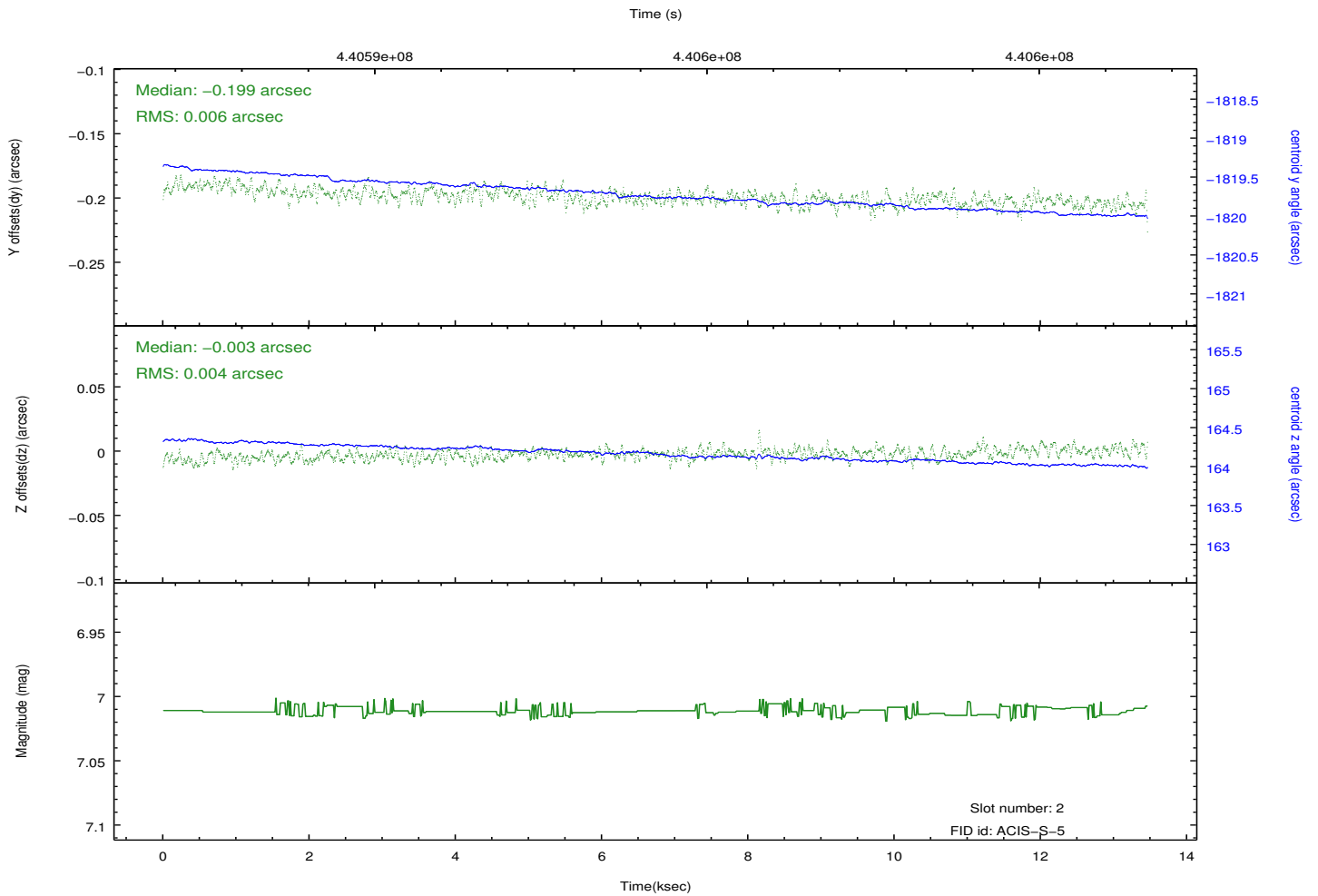
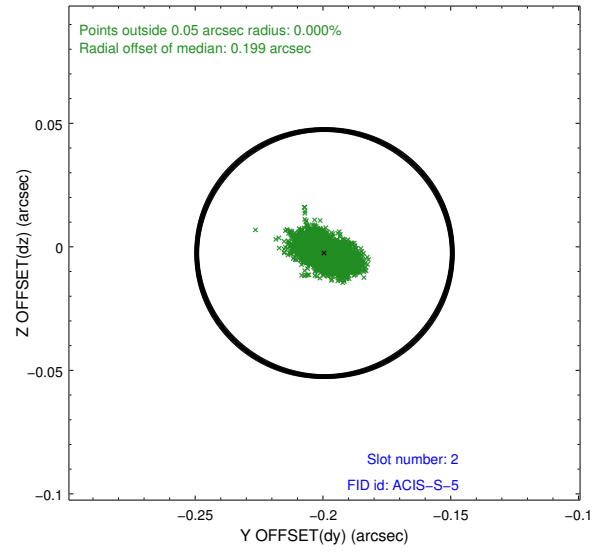
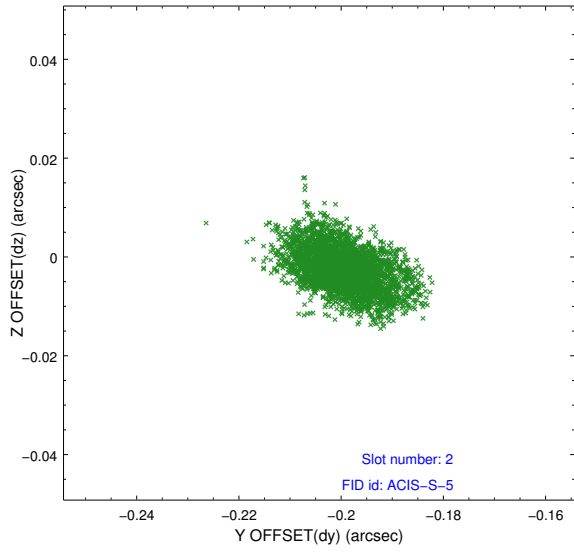
### 2.5.1 Slot 0



## 2.5.2 Slot 1



### 2.5.3 Slot 2



# A Summary

## A.1 Status

V&V Scientist	Beth Sundheim
V&V Date (YYYY-MM-DD)	2012.02.29
V&V Edition	1
V&V Disposition and Status	OK
V&V Charge Time	13.373400102854

## A.2 Comments