

V&V Reference Report

L2 ASCDS Version : 8.4.5

Observation 13157 - L2 Version 2
Chandra X-Ray Center

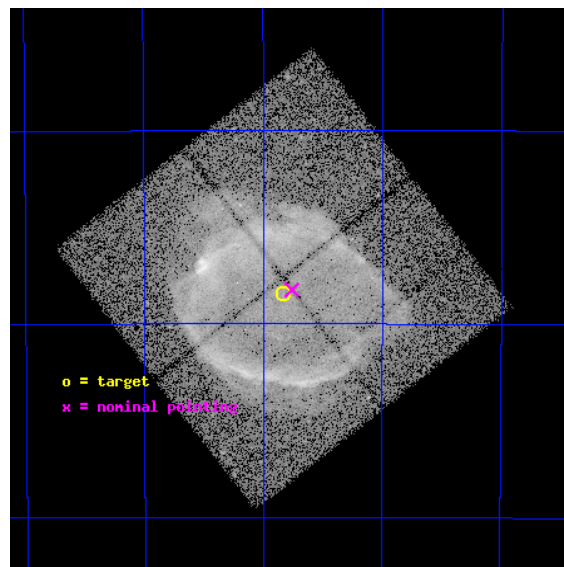
L2 Processing Date : Jul 5 2012

Contents

1	Front	2
2	OBI	3
2.1	OBI	3
2.1.1	Images	3
2.1.2	Bias	3
2.1.3	Parameters	4
2.1.4	Events	4
2.2	Compared Parameters	5
2.3	Aspect	6
2.4	Star Slots	9
2.4.1	Slot 3	9
2.4.2	Slot 4	10
2.4.3	Slot 5	11
2.4.4	Slot 6	12
2.4.5	Slot 7	13
2.5	FID Slots	14
2.5.1	Slot 0	14
2.5.2	Slot 1	15
2.5.3	Slot 2	16
A	Summary	17
A.1	Status	17
A.2	Comments	17

1 Front

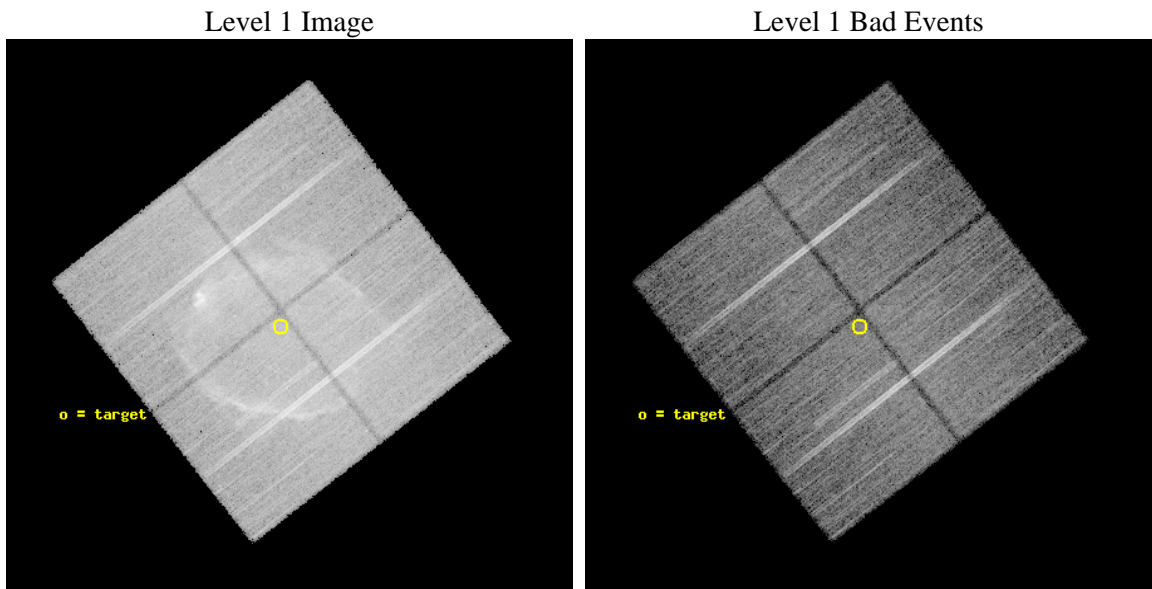
seq_num	501186	Sequence number
obs_id	13157	Observation id
title	A Detailed Study of the Type Ia Supernova Remnant G299.2-2.9	Propo
observer	DR. Sangwook Park	Principal investigator
object	G299.2-2.9	Source name
dtcycle	0	
cycle	P	events from which exps? Prim/Second/Both
ra_targ	183.708333	Observer's specified target RA [deg]
dec_targ	-65.473611	Observer's specified target Dec [deg]
ra_nom	183.6900839427	Nominal RA [deg]
dec_nom	-65.470769626587	Nominal Dec [deg]
roll_nom	142.19207847125	Nominal Roll [deg]
revision	2	Processing version of data
ontime	35611.714001298	Sum of GTIs [s]
livetime	35146.420740909	Livetime [s]
ontime0	35614.731841683	Sum of GTIs [s]
ontime1	35608.490990818	Sum of GTIs [s]
ontime2	35614.81392169	Sum of GTIs [s]
ontime3	35611.714001298	Sum of GTIs [s]
l2events	227805	Number of level 2 events



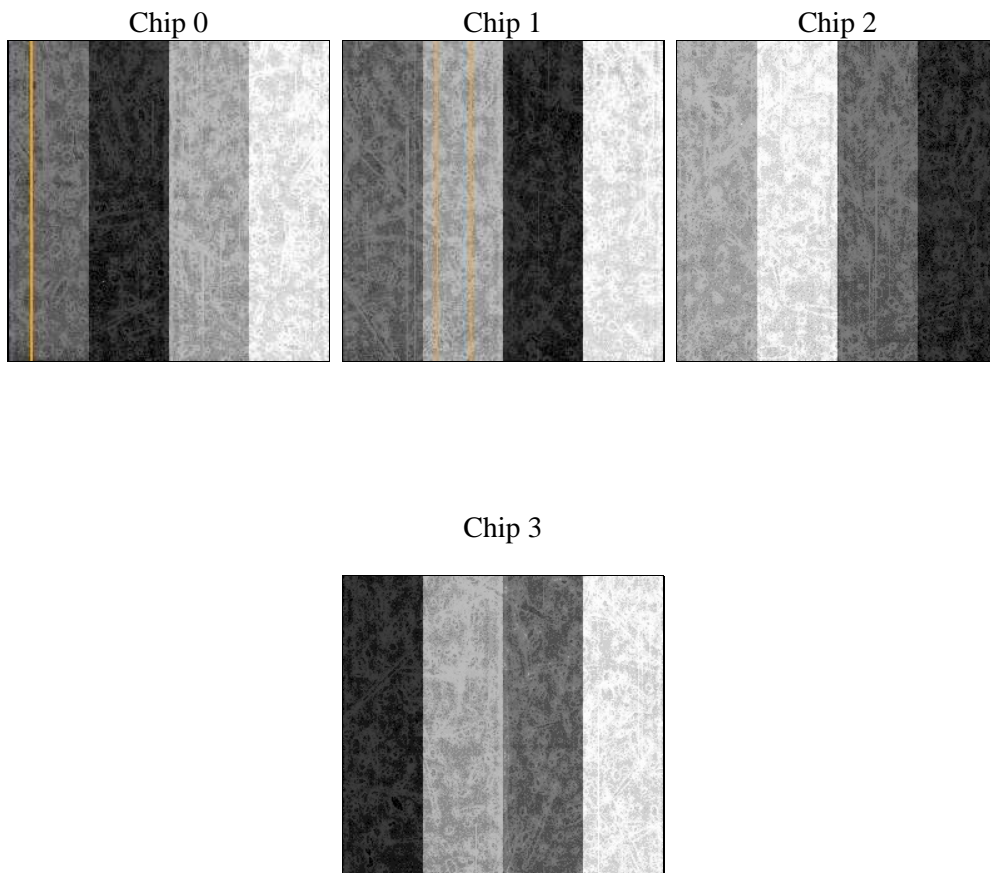
2 OBI

2.1 OBI

2.1.1 Images



2.1.2 Bias



2.1.3 Parameters

obi_num	0	Obi number	sched_exp_time	35551.486000	[s] Scheduled observation exposure time
ascdsver	8.4.5	Processing system revision	ontime	35611.714001298	Sum of GTIs [s]
caldsver	4.5.0	 	ontime0	35614.731841683	Sum of GTIs [s]
date	2012-07-05T22:07:43	Date and time of file creation	ontime1	35608.490990818	Sum of GTIs [s]
revision	2	Processing version of data	ontime2	35614.81392169	Sum of GTIs [s]
			ontime3	35611.714001298	Sum of GTIs [s]
			l1events	1078284	Number of level 1 events

2.1.4 Events

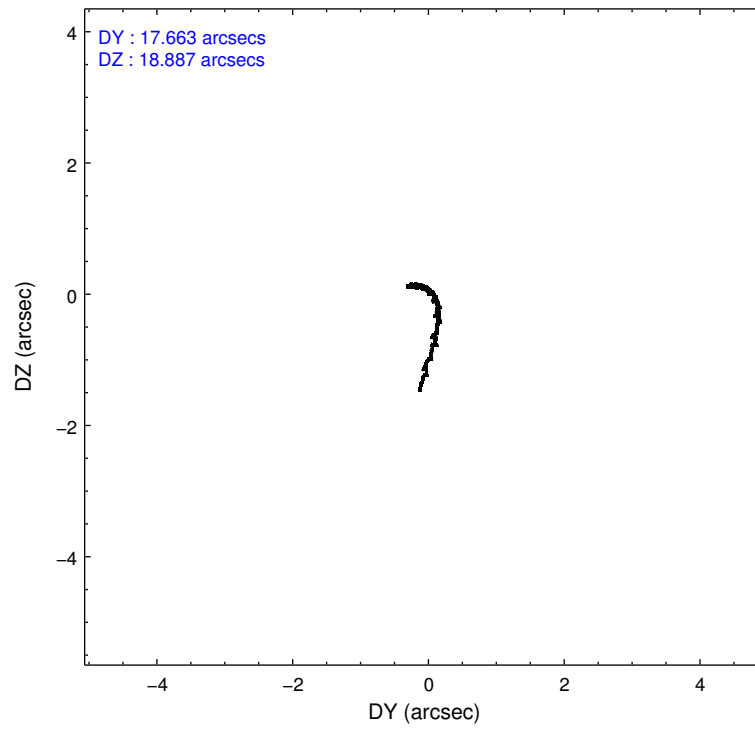
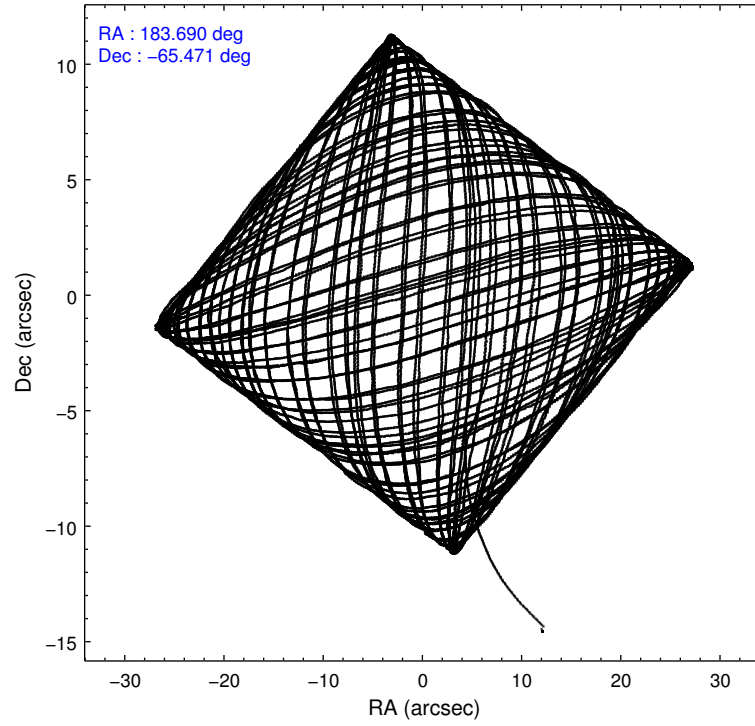
	ccd 0	ccd 1	ccd 2	ccd 3
level 1 events	246051	270821	276038	285374
rejected events	192283	192540	222801	215717
rejected %	78%	71%	80%	75%

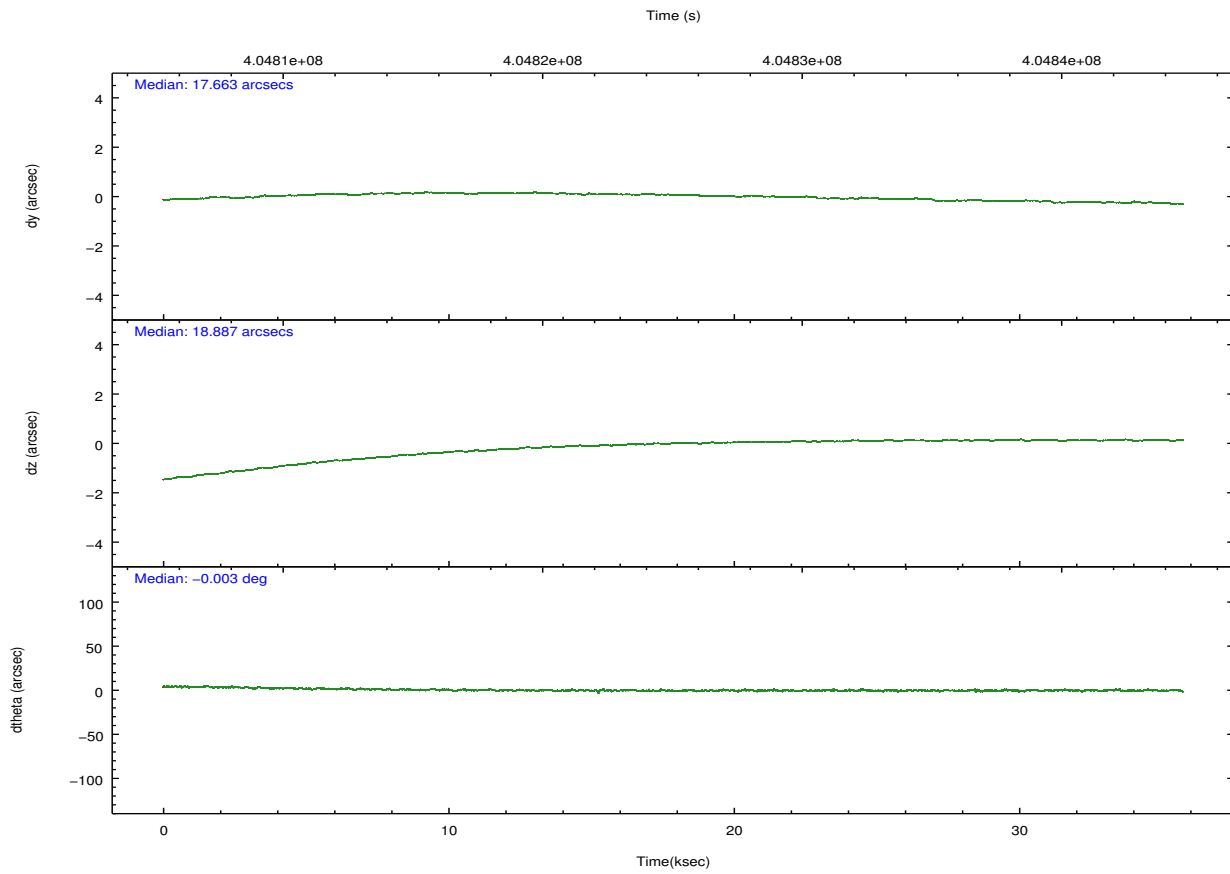
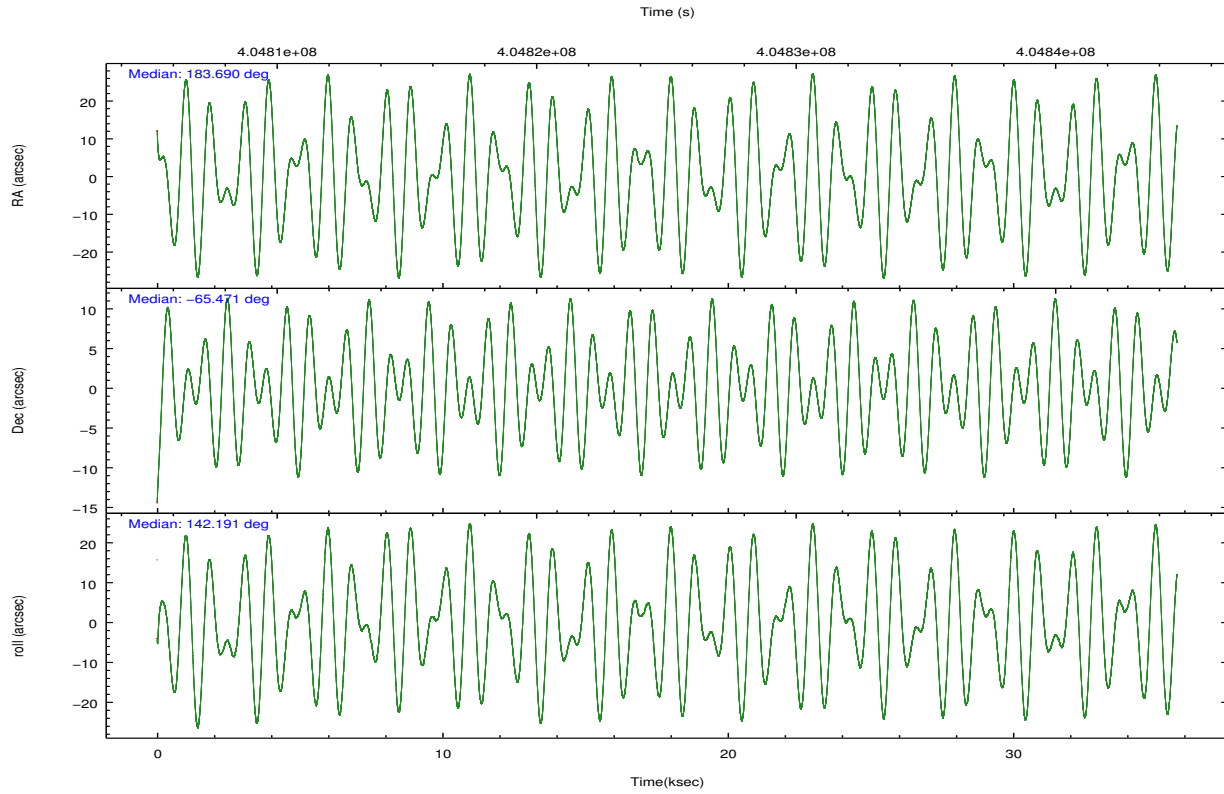
	ccd 0	ccd 1	ccd 2	ccd 3
grade 0 events	34043	54858	34514	48960
	13%	20%	12%	17%
grade 1 events	250	310	257	379
	0%	0%	0%	0%
grade 2 events	8346	9891	7974	8819
	3%	3%	2%	3%
grade 3 events	3234	3777	2946	3465
	1%	1%	1%	1%
grade 4 events	3103	3803	3045	3359
	1%	1%	1%	1%
grade 5 events	8354	9145	7987	9629
	3%	3%	2%	3%
grade 6 events	5051	5958	4762	5057
	2%	2%	1%	1%
grade 7 events	183670	183079	214553	205706
	74%	67%	77%	72%

2.2 Compared Parameters

Parameter	Planned	Actual	Parameter	Planned	Actual
Instrument	ACIS	ACIS	Obspar format version number	7	7
Detector	ACIS-0123	ACIS-0123	Obspar file type	PREDICTED	ACTUAL
Grating	NONE	NONE	Obspar update status	NONE	UPDATED
Data mode	VFAINT	VFAINT	Number of optional ACIS chips dropped	0	0
Observation mode	POINTING	POINTING	On-chip summing requested	N	N
[deg] Pointing RA	183.755765	183.6900839426974	Subarray requested	NONE	NONE
[deg] Pointing Dec	-65.474402	-65.47076962658737	Alternating exposures requested	N	N
[deg] Pointing Roll	142.043147	142.1920784712548	[s] Primary exposure time	0.000000	3.1
[mm] SIM focus pos	-0.782348	-0.7809083437167272			
[mm] SIM defocus	0	0.001439871863259334			
[mm] SIM translation stage pos	-233.592463	-233.5874344608287			
[mm] SIM translation stage offset	0	-0.005018542100998502			
[s] Observation start time (MET)	404807337.184000	404806011.13059			
Observation start date	2010-10-30T06:27:51	2010-10-30T06:06:51			
[s] Observation end time (MET)	404842888.184000	404843127.4075			
Observation end date	2010-10-30T16:20:22	2010-10-30T16:25:27			
Read mode	TIMED	TIMED			

2.3 Aspect



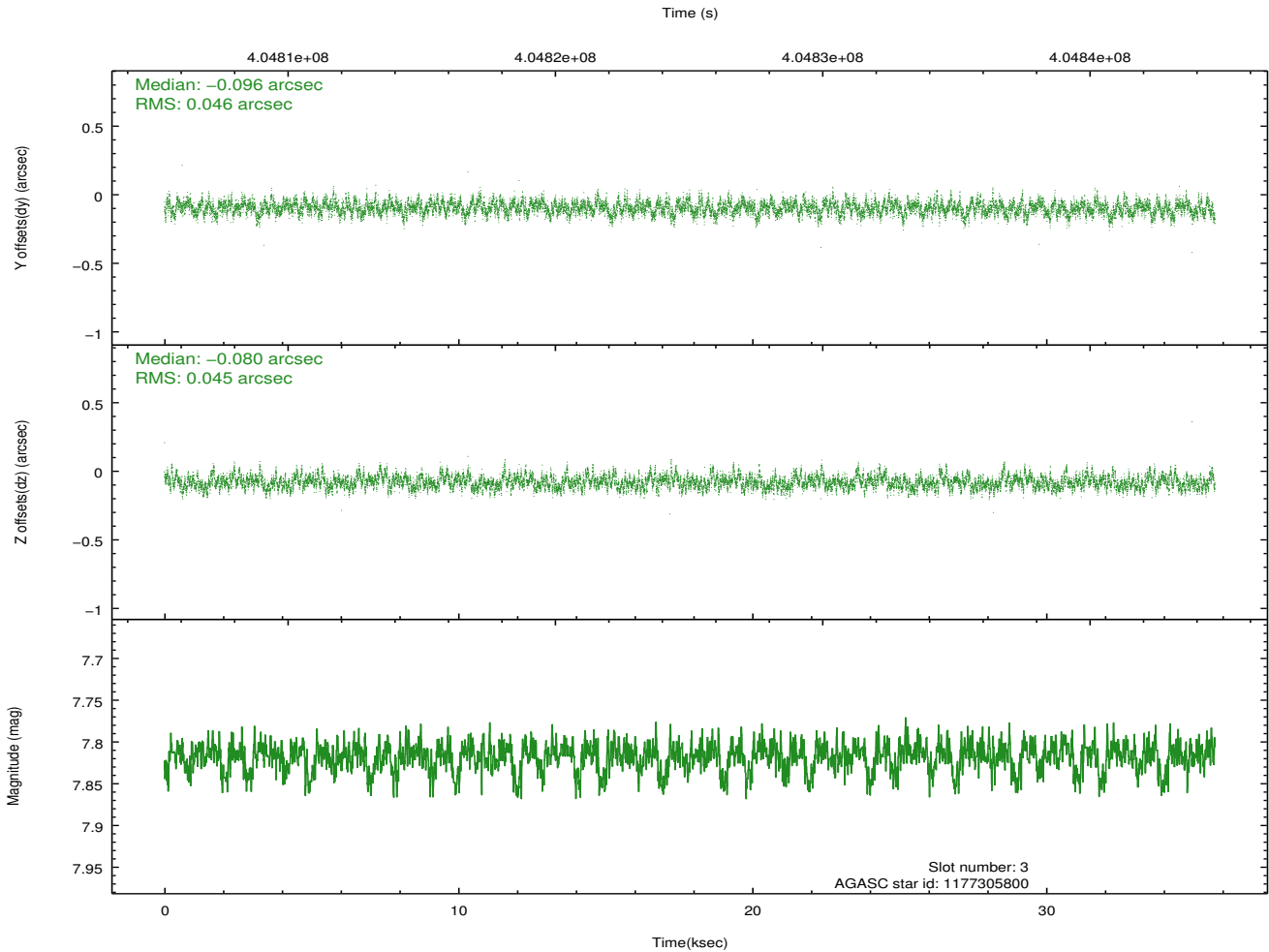
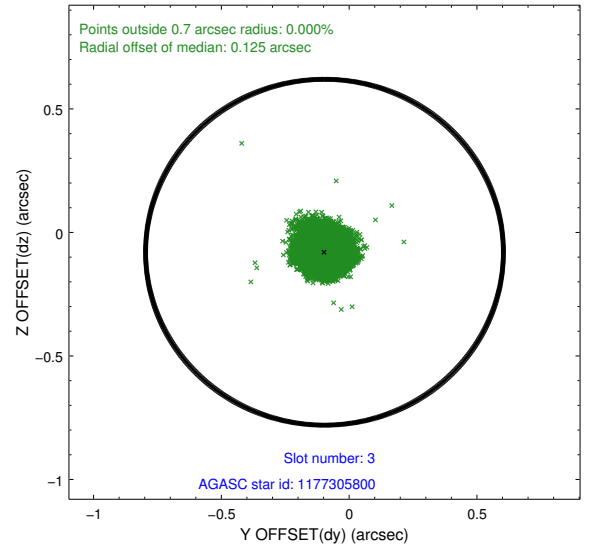
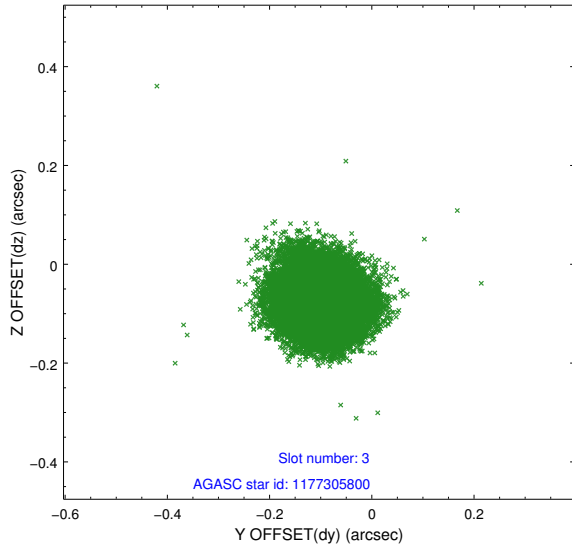


Slot Statistics

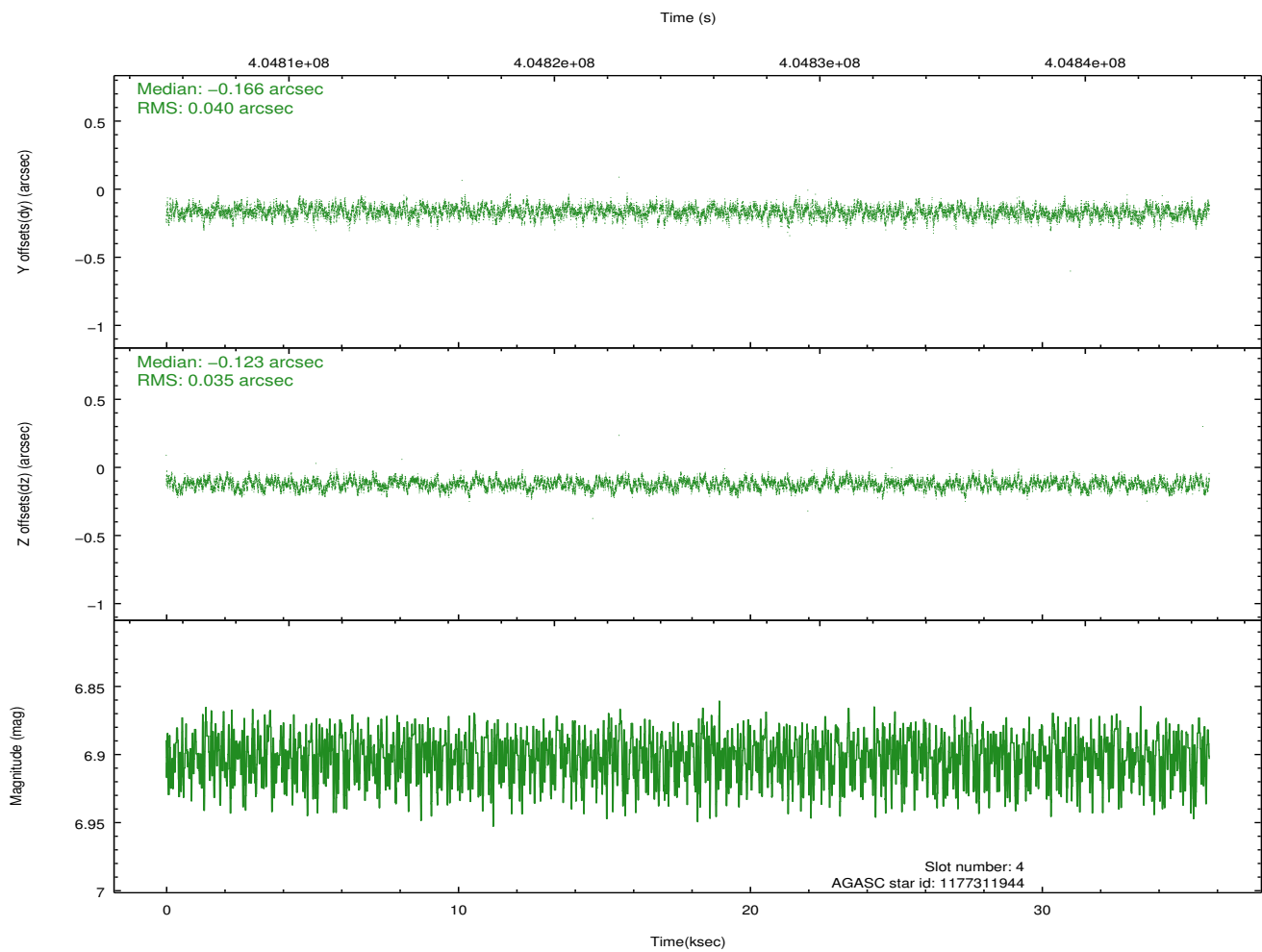
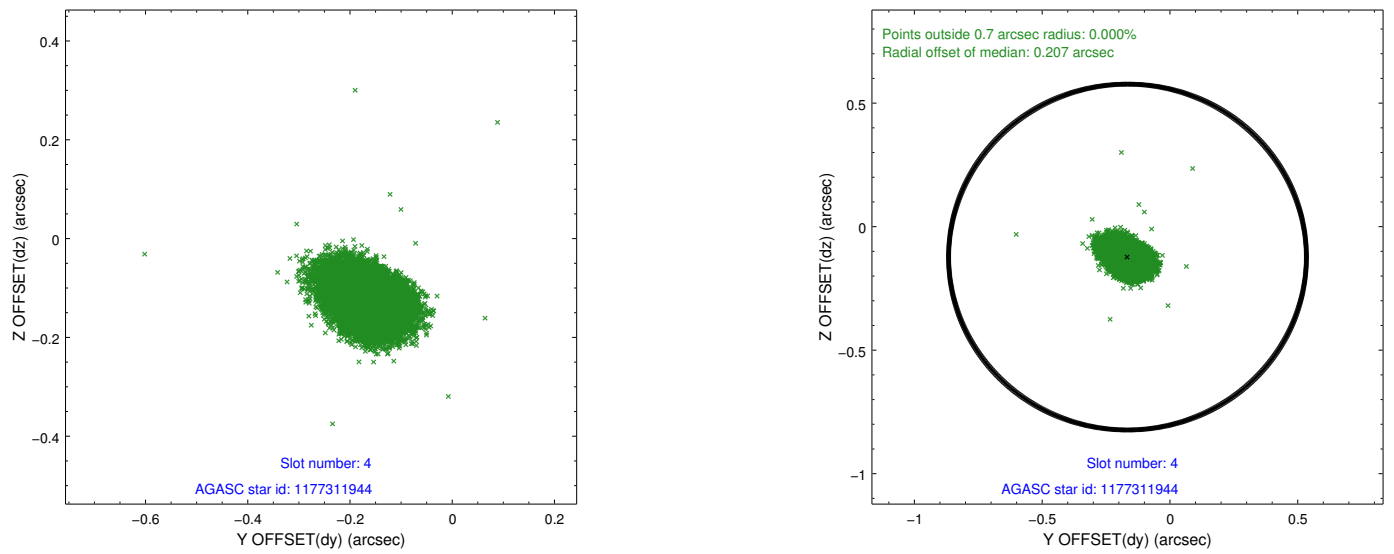
slot	status	id	mag	n_pts	med_dy	med_dz	dr1	dr2	ra	dec	mean_y	mean_z
0	FID	ACIS-I-1	7.03	8717	0.025	0.034	0.016	0.036	0.000000	0.000000	921.78	-842.32
1	FID	ACIS-I-5	7.01	8716	-0.210	0.038	0.015	0.025	0.000000	0.000000	-1826.57	1055.13
2	FID	ACIS-I-6	7.03	8714	0.092	-0.002	0.010	0.020	0.000000	0.000000	387.32	1699.66
3	GUIDE	1177305800	7.82	17428	-0.096	-0.080	0.068	0.108	182.814616	-65.027625	2110.86	-379.70
4	GUIDE	1177311944	6.90	17432	-0.166	-0.123	0.056	0.092	182.934554	-64.948787	2145.86	-715.03
5	GUIDE	1177431744	8.57	17424	0.320	0.235	0.066	0.107	184.990619	-65.014021	-471.47	-2446.69
6	GUIDE	1177434688	8.71	17424	-0.024	0.091	0.078	0.122	185.679282	-65.435625	-2210.21	-1845.60
7	GUIDE	1177955240	7.96	17429	-0.032	-0.122	0.050	0.080	184.346620	-65.724487	-1245.52	175.28

2.4 Star Slots

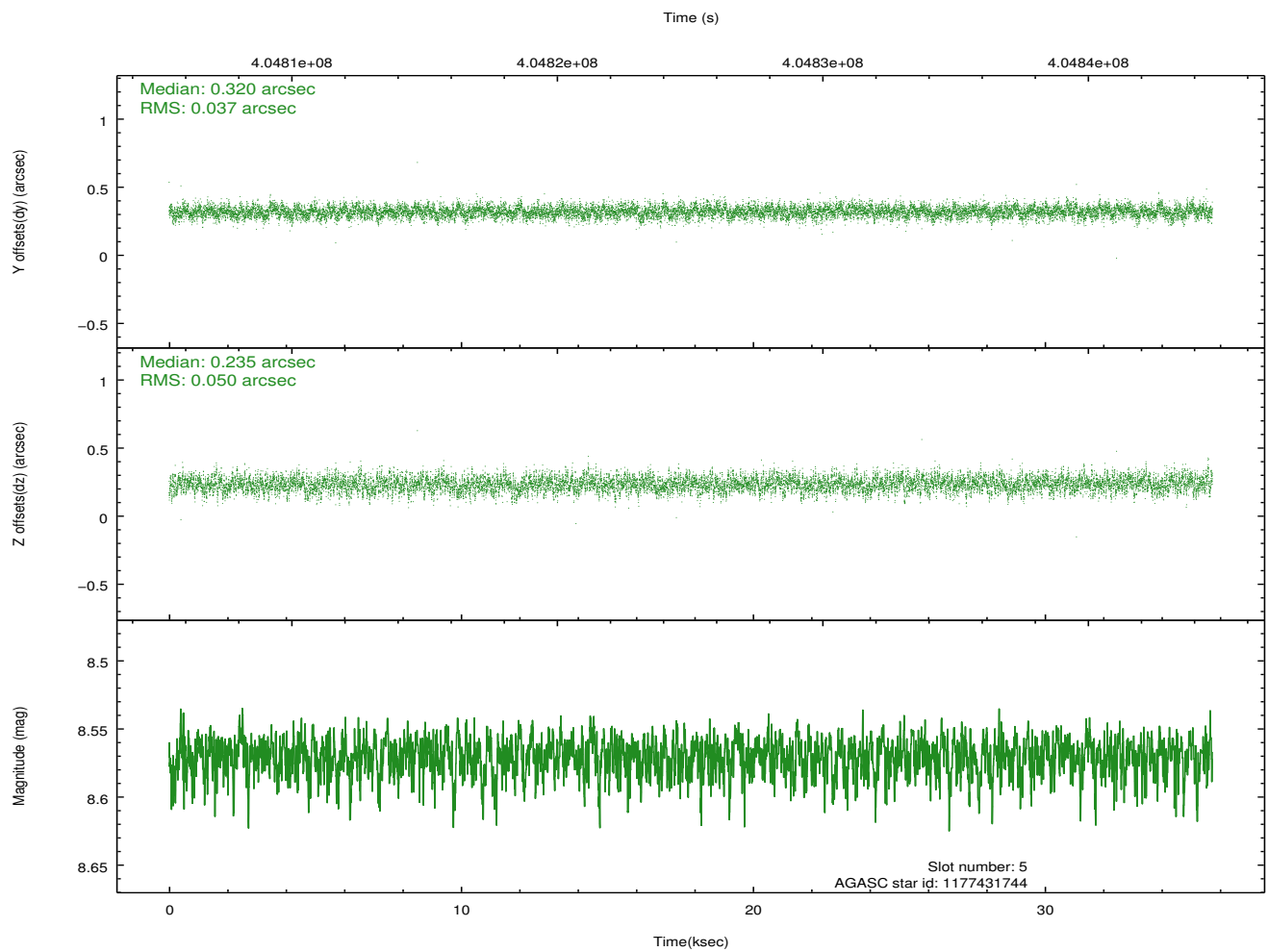
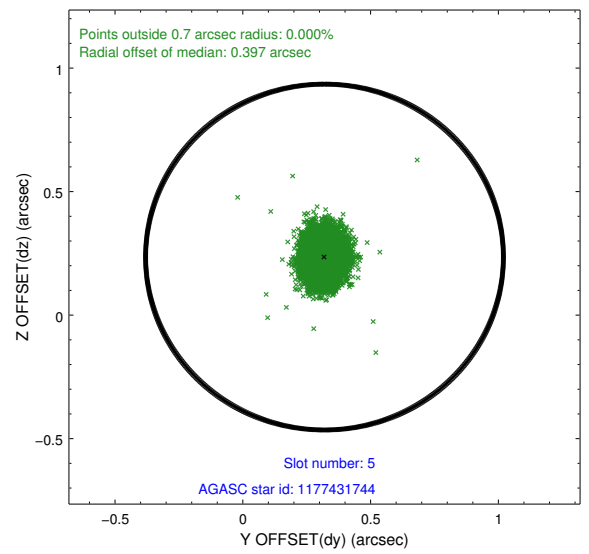
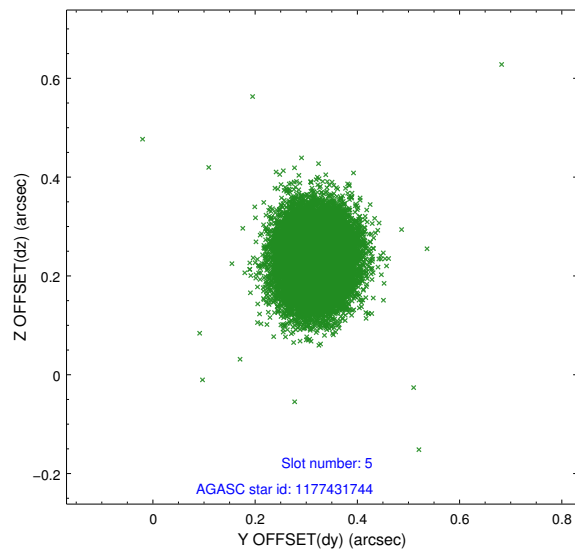
2.4.1 Slot 3



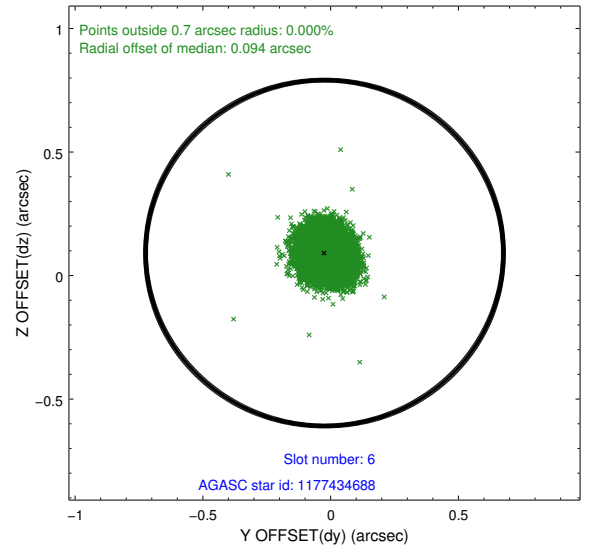
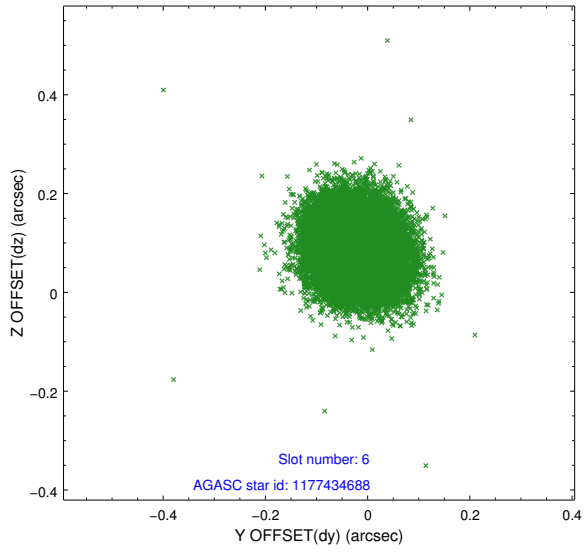
2.4.2 Slot 4



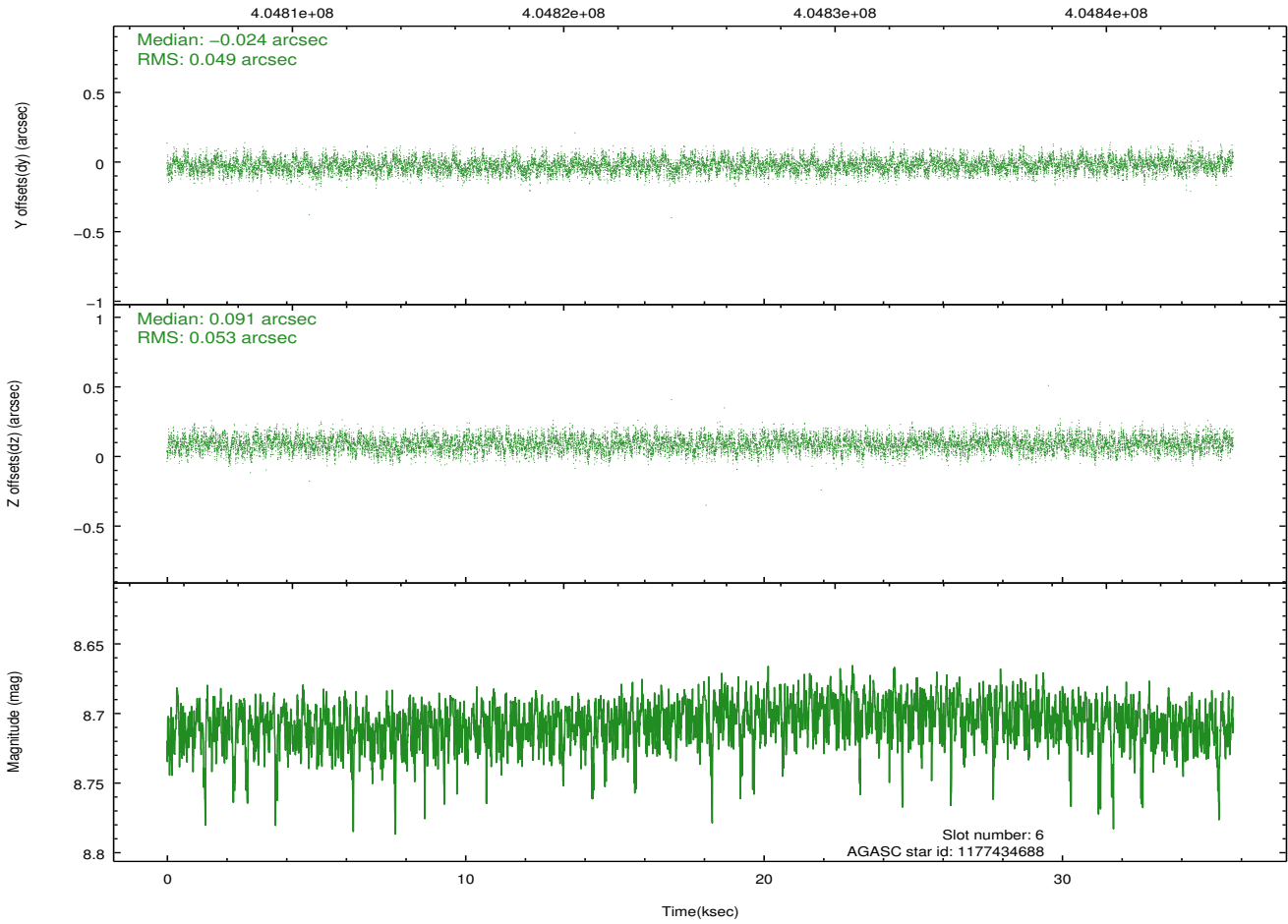
2.4.3 Slot 5



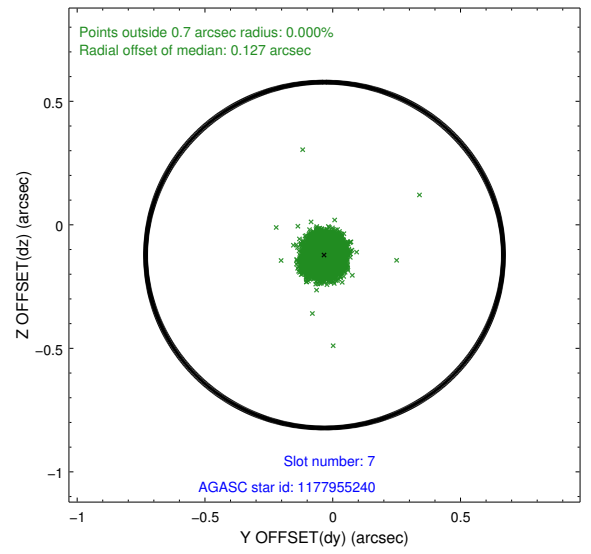
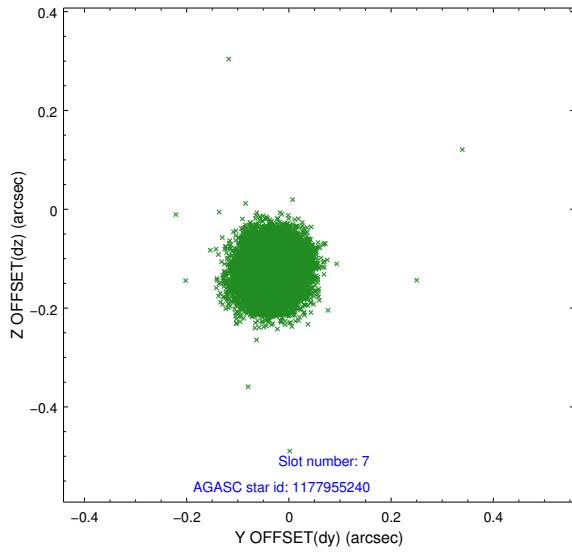
2.4.4 Slot 6



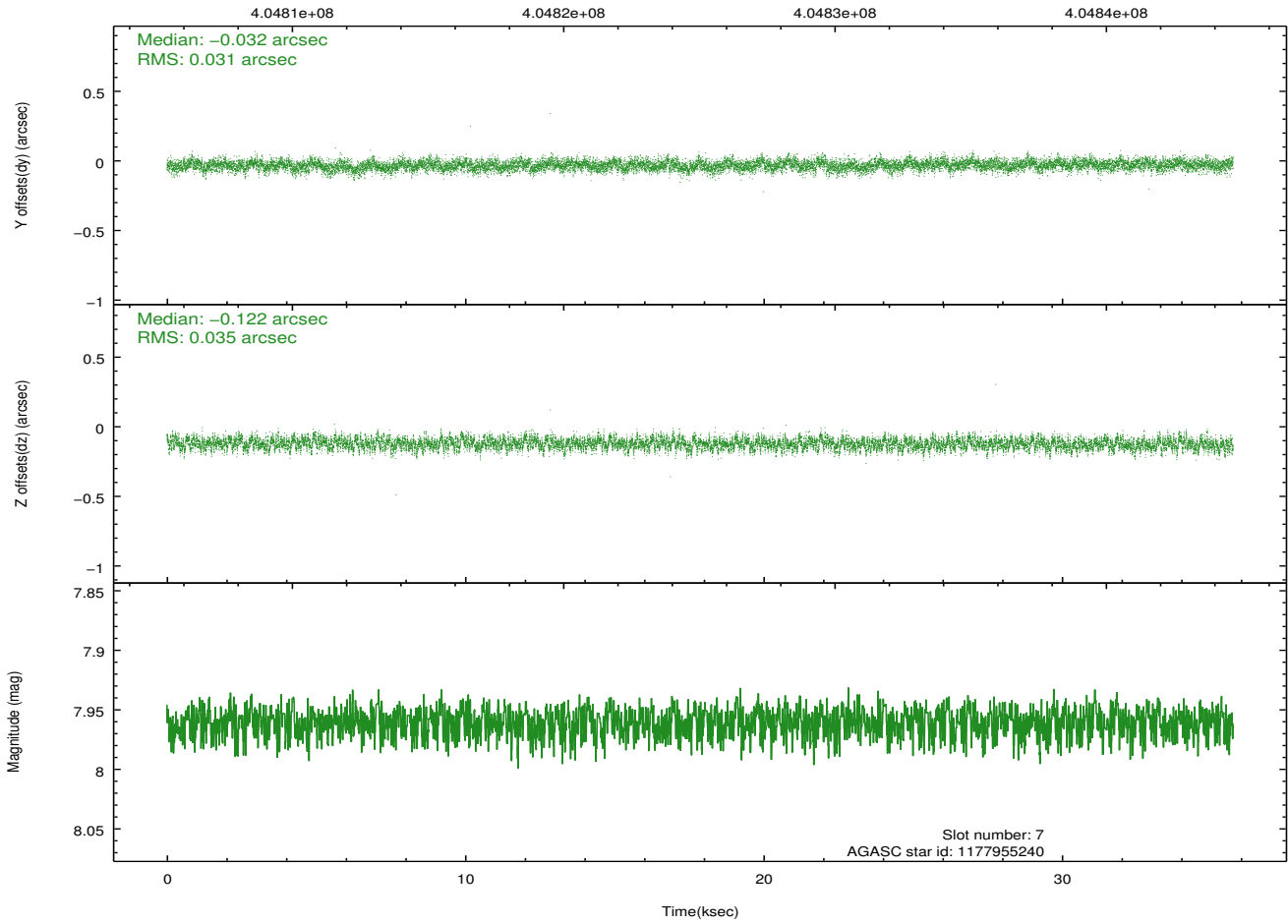
Time (s)



2.4.5 Slot 7

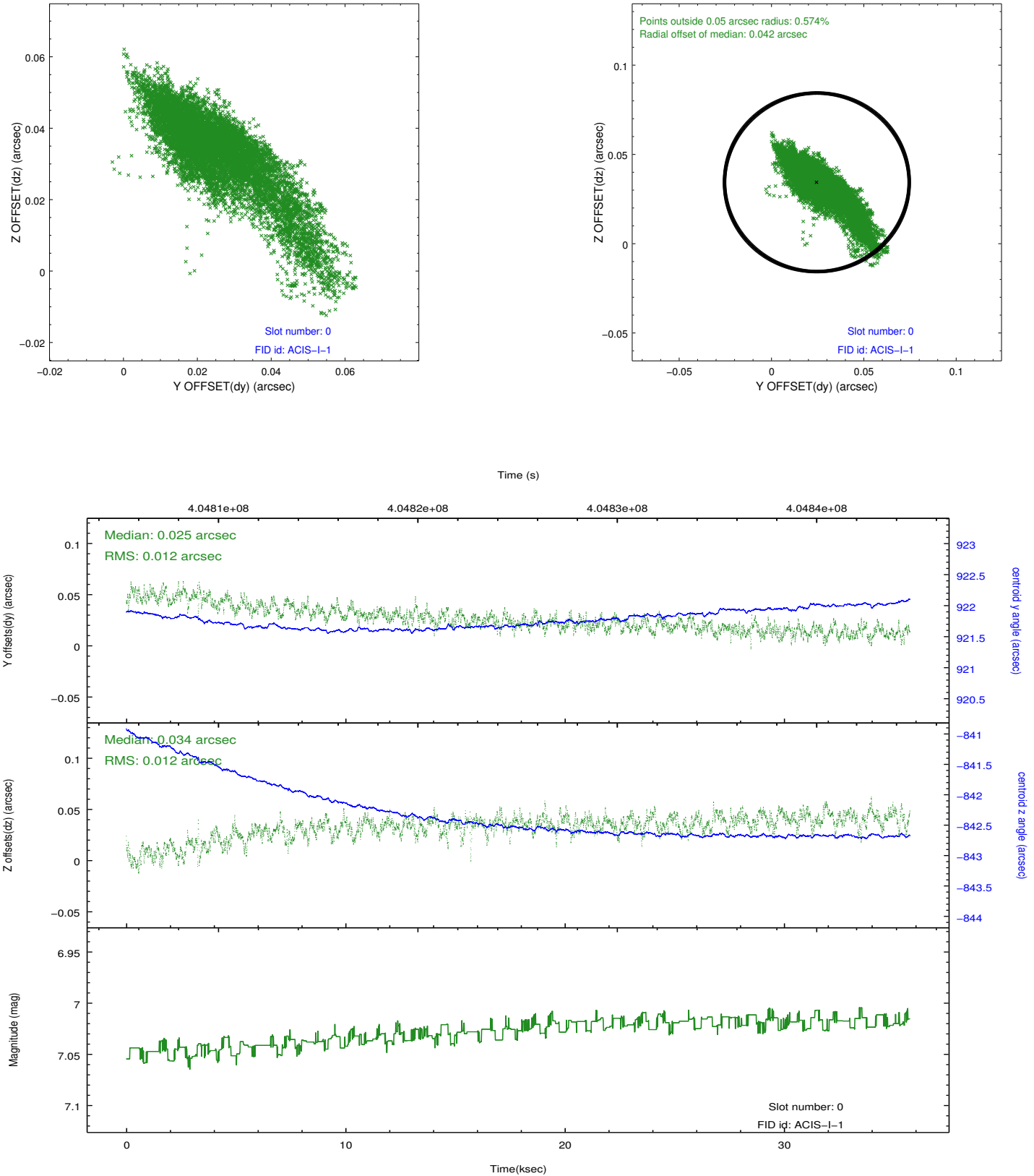


Time (s)

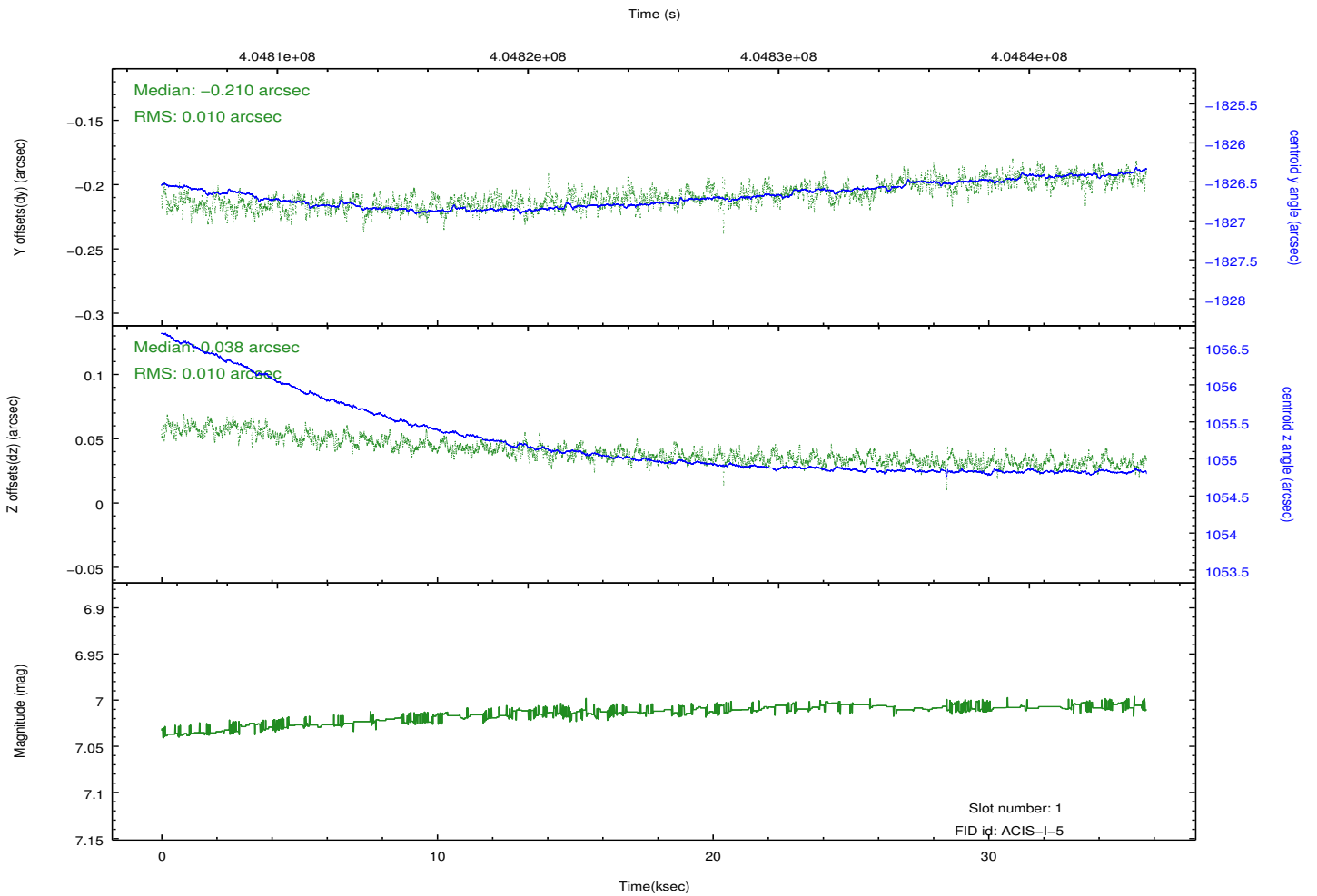
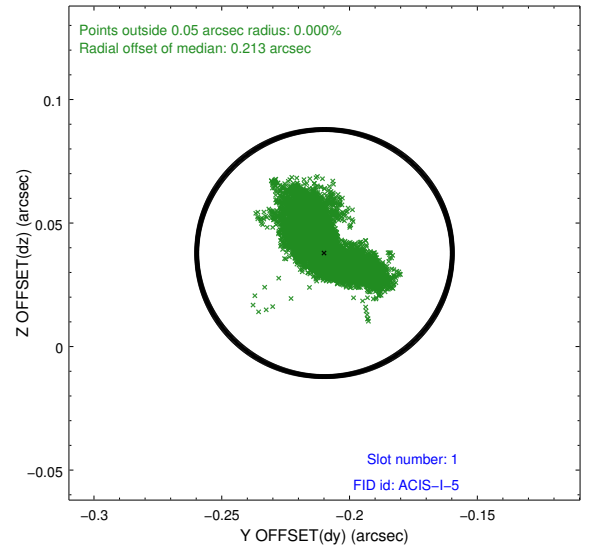
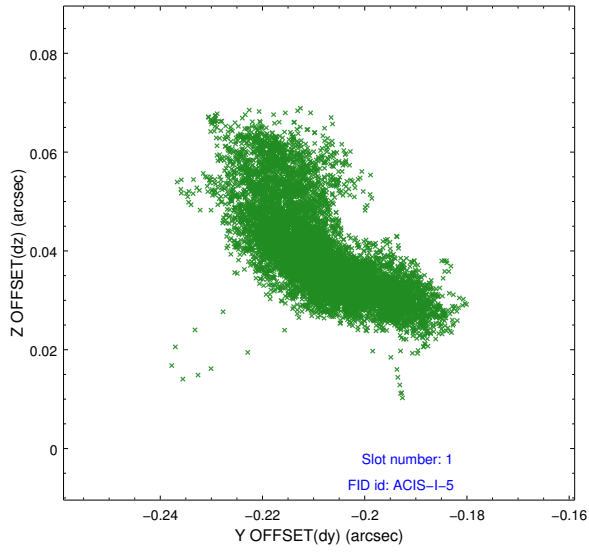


2.5 FID Slots

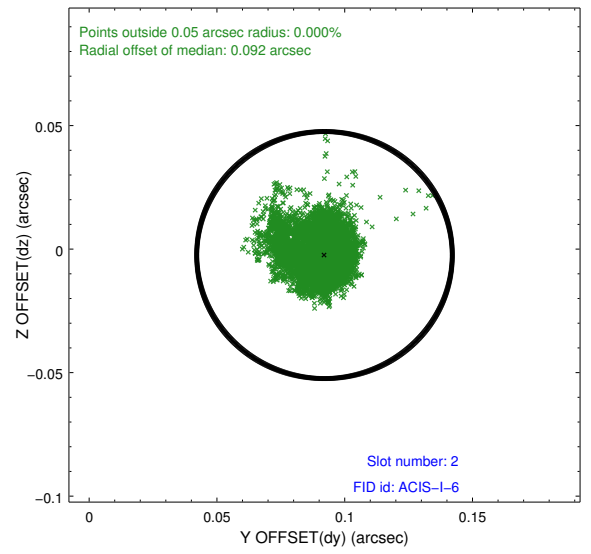
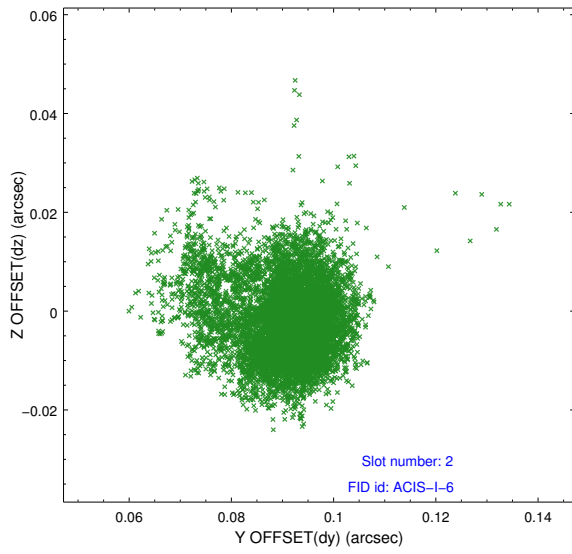
2.5.1 Slot 0



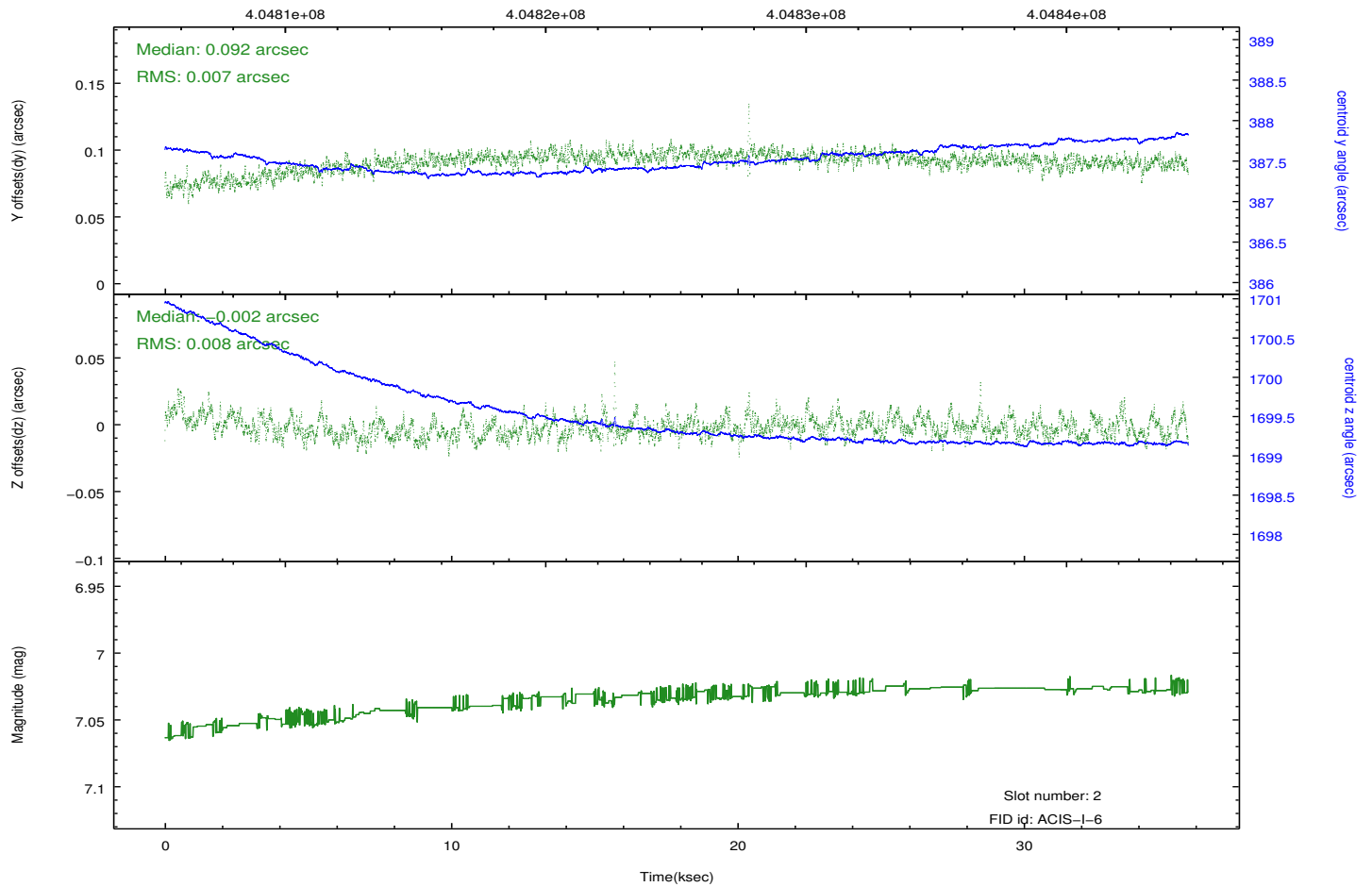
2.5.2 Slot 1



2.5.3 Slot 2



Time (s)



A Summary

A.1 Status

V&V Scientist	Jen Lauer
V&V Date (YYYY-MM-DD)	2012.07.16
V&V Edition	1
V&V Disposition and Status	OK
V&V Charge Time	35.611714003205

A.2 Comments