

V&V Reference Report

L2 ASCDS Version : 8.4.3

Observation 13227 - L2 Version 3
Chandra X-Ray Center

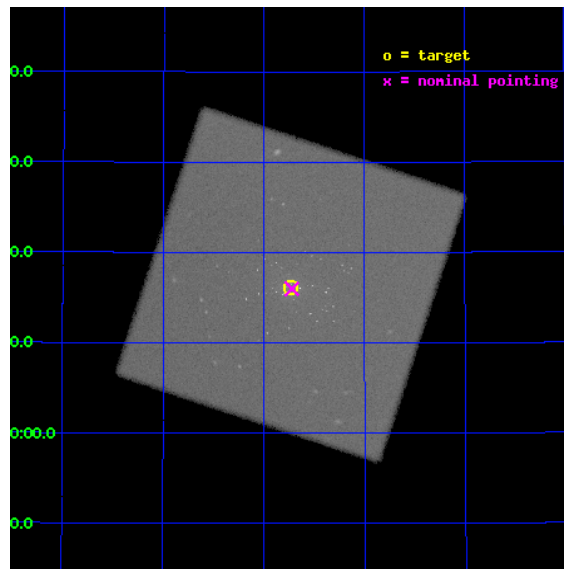
L2 Processing Date : Jul 28 2012

Contents

1	Front	2
2	OBI	3
2.1	OBI	3
2.1.1	Images	3
2.1.2	Parameters	4
2.1.3	Events	4
2.2	Compared Parameters	5
2.3	Aspect	6
2.4	Star Slots	9
2.4.1	Slot 3	9
2.4.2	Slot 4	10
2.4.3	Slot 5	11
2.4.4	Slot 6	12
2.4.5	Slot 7	13
2.5	FID Slots	14
2.5.1	Slot 0	14
2.5.2	Slot 1	15
2.5.3	Slot 2	16
A	Summary	17
A.1	Status	17
A.2	Comments	17

1 Front

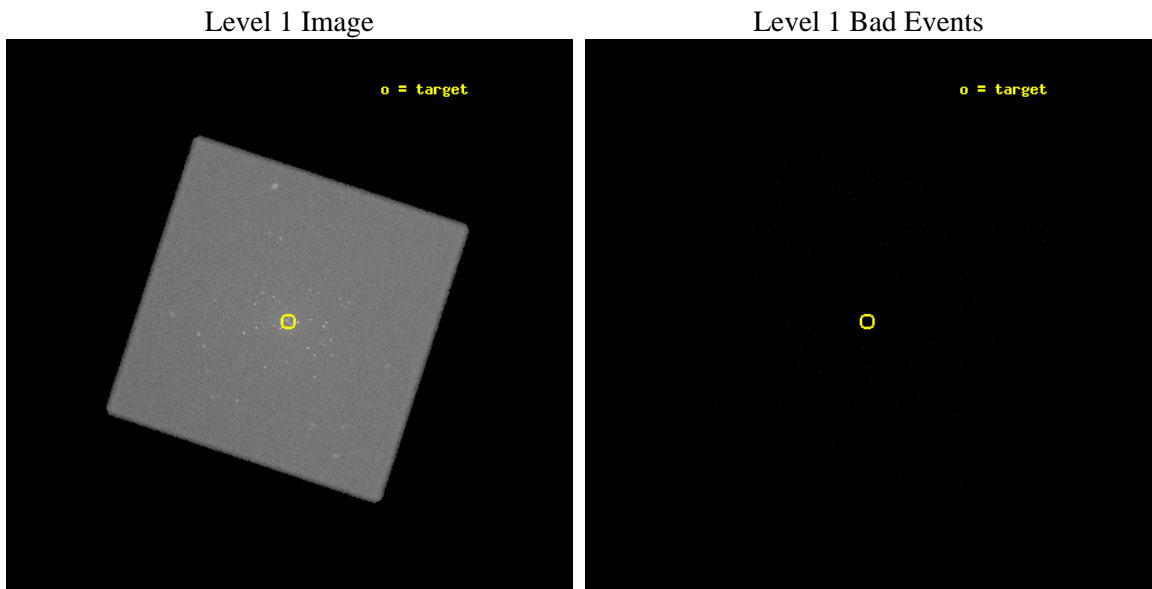
seq_num	300292	Sequence number
obs_id	13227	Observation id
title	Resolving short supersoft source states of optical novae in the core of M31	Proposal title
observer	Dr. Wolfgang Pietsch	Principal investigator
object	M31	Source name
ra_targ	10.684583	Observer's specified target RA [deg]
dec_targ	41.269278	Observer's specified target Dec [deg]
ra_nom	10.68029121235	Nominal RA [deg]
dec_nom	41.266439686983	Nominal Dec [deg]
roll_nom	243.24533656112	Nominal Roll [deg]
revision	3	Processing version of data
ontime	20185.582313538	[s]
livetime	19987.79639574	Ontime multiplied by DTCOR
l2events	1427699	Number of level 2 events



2 OBI

2.1 OBI

2.1.1 Images



2.1.2 Parameters

obi_num	0	Obi number	sched_exp_time	20000.000000	[s] Scheduled observation exposure time
ascdsver	8.4.5	Processing system revision	ontime	20185.582313538	[s]
caldbver	4.5.1	 	l1events	2044045	Number of level 1 events
date	2012-07-28T06:35:58	Date and time of file creation			
revision	3	Processing version of data			

2.1.3 Events

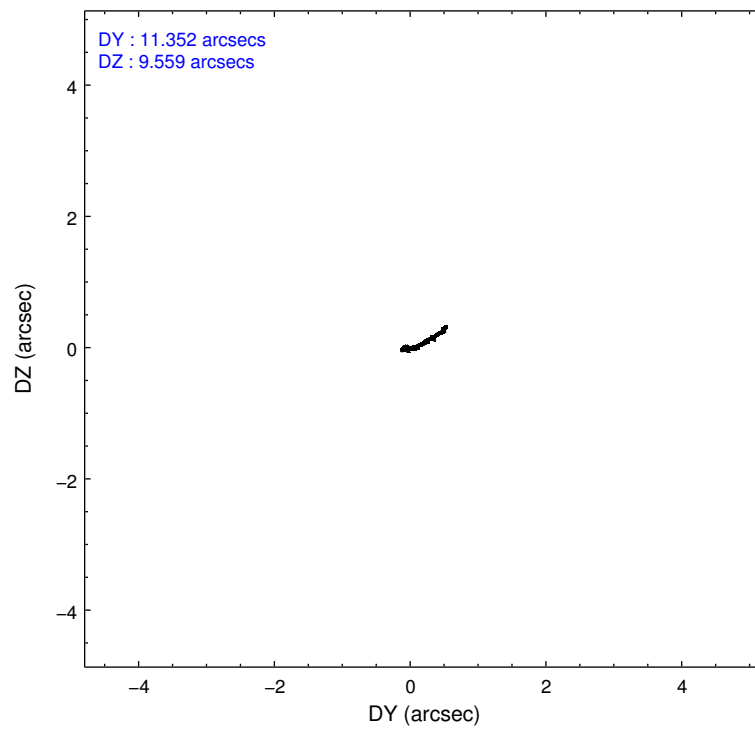
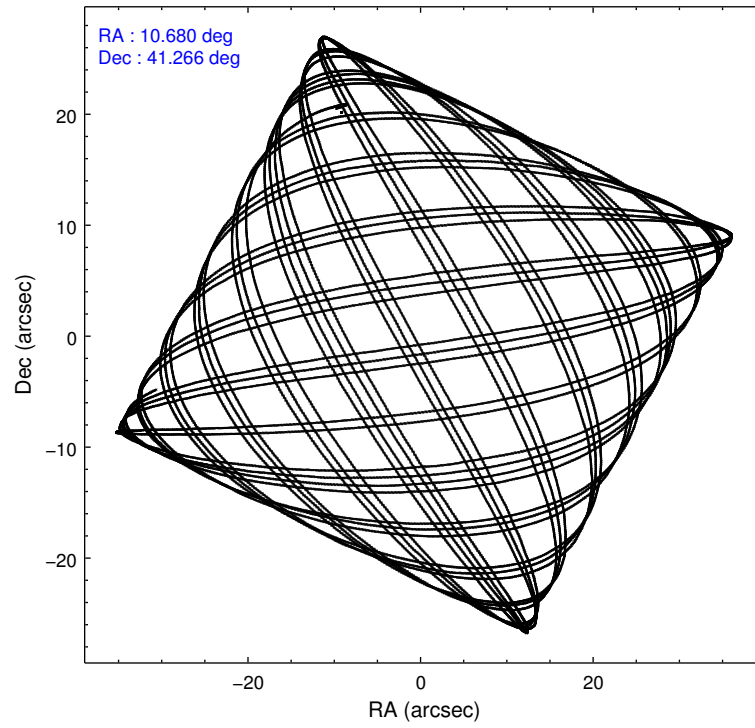
Level 1 Events

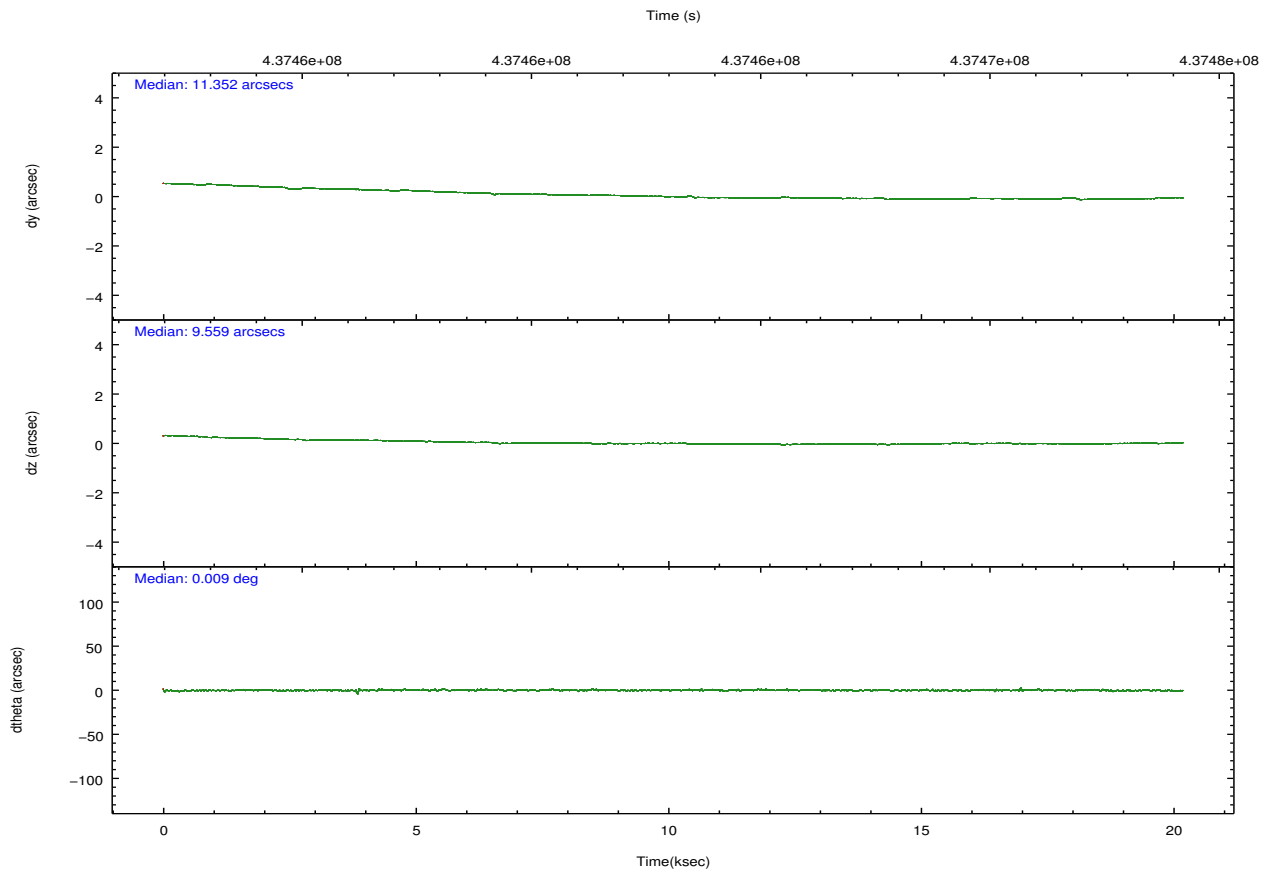
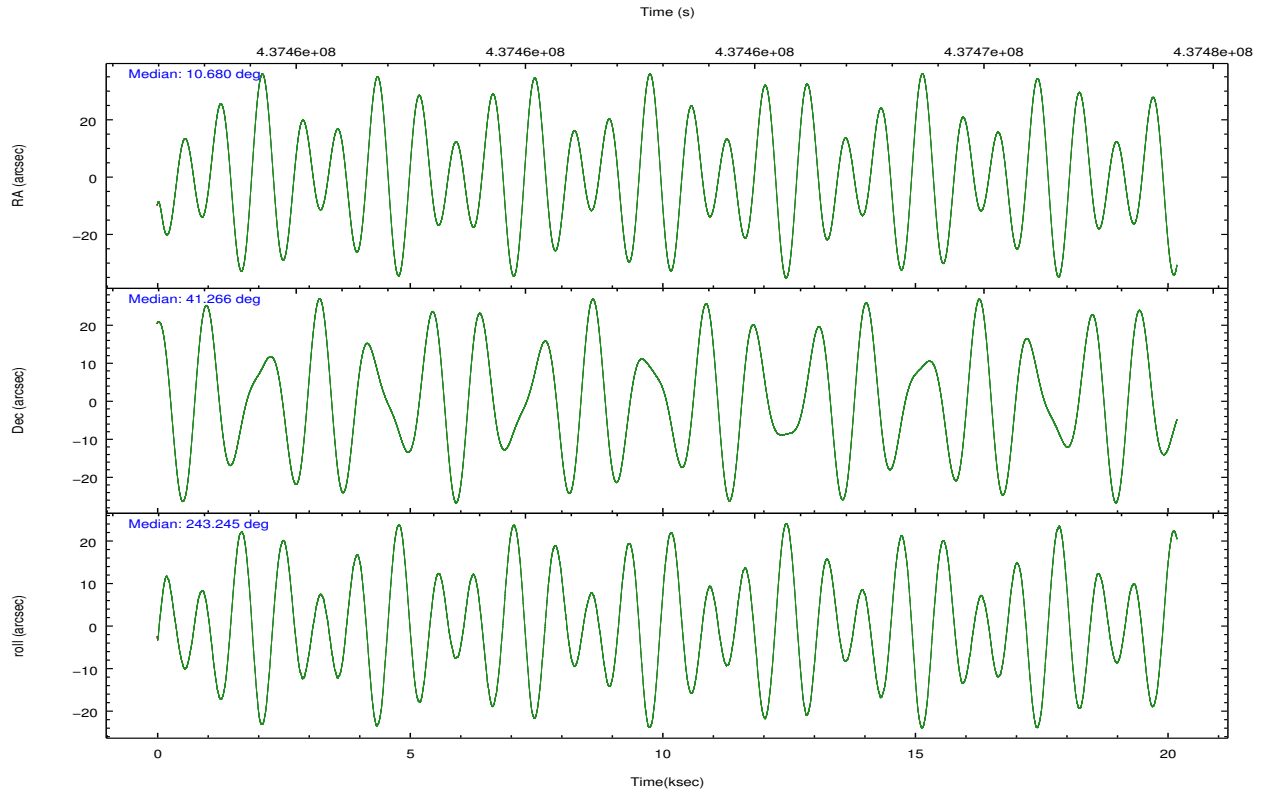
	segment 0
level 1 events	2044045
rejected events	71781
rejected %	3%

2.2 Compared Parameters

Parameter	Planned	Actual	Parameter	Planned	Actual
Instrument	HRC	HRC	Obspar format version number	7	7
Detector	HRC-I	HRC-I	Obspar file type	PREDICTED	ACTUAL
Grating	NONE	NONE	Obspar update status	NONE	UPDATED
Data mode	OBSERVING	OBSERVING			
Observation mode	POINTING	POINTING			
[deg] Pointing RA	10.677498	10.68029121235034			
[deg] Pointing Dec	41.293588	41.26643968698278			
[deg] Pointing Roll	243.342677	243.2453365611247			
[s] Window start time (MET)	437011266.184000	437011266.184000			
[s] Window stop time (MET)	440726406.184000	440726406.184000			
[mm] SIM focus pos	-1.040293	-1.038866356238299			
[mm] SIM defocus	0	0.001426264420575141			
[mm] SIM translation stage pos	126.985494	126.9829799899862			
[mm] SIM translation stage offset	0	0.002508901615314585			
[s] Observation start time (MET)	437453169.184000	437452252.50594			
Observation start date	2011-11-12T02:45:03	2011-11-12T02:30:52			
[s] Observation end time (MET)	437473169.184000	437474162.3946			
Observation end date	2011-11-12T08:18:23	2011-11-12T08:36:02			

2.3 Aspect



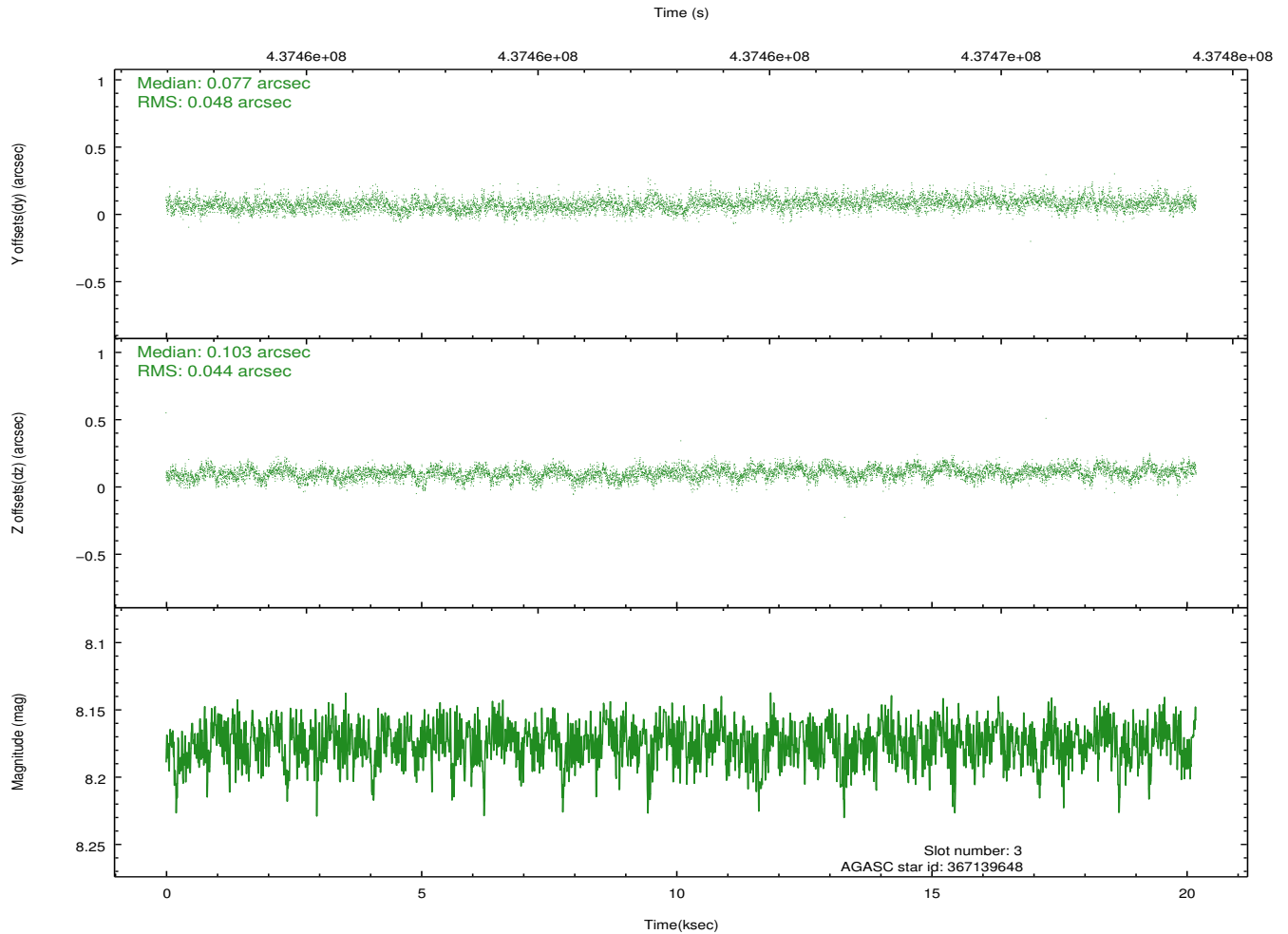
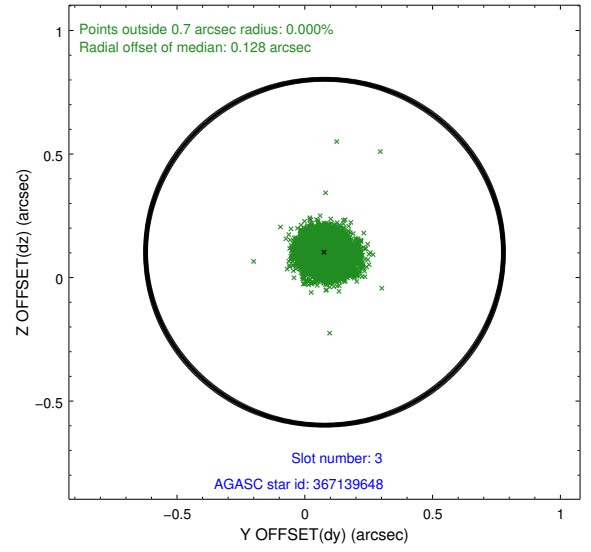
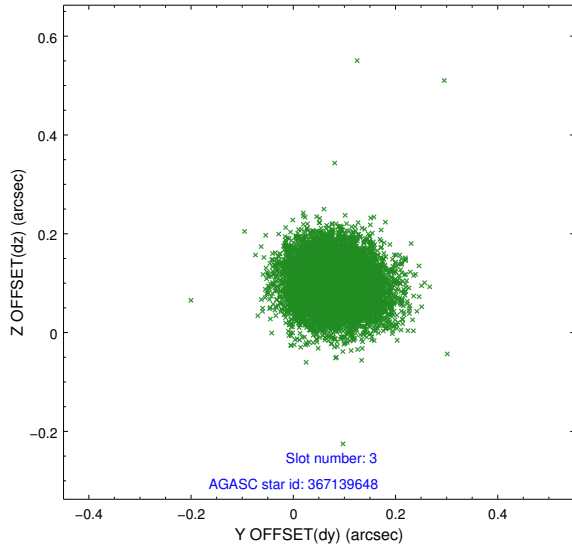


Slot Statistics

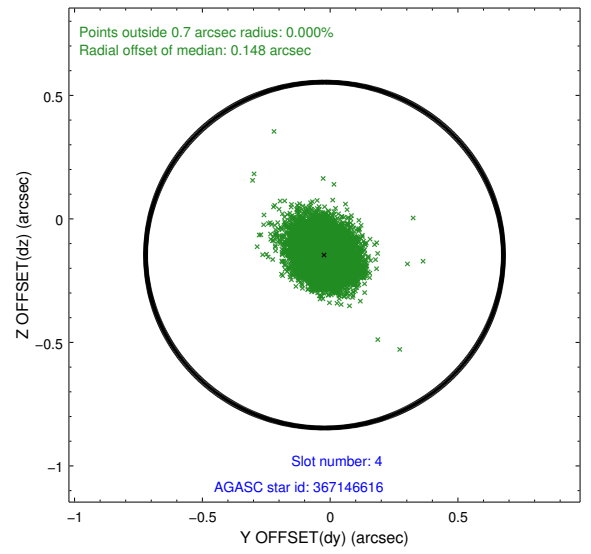
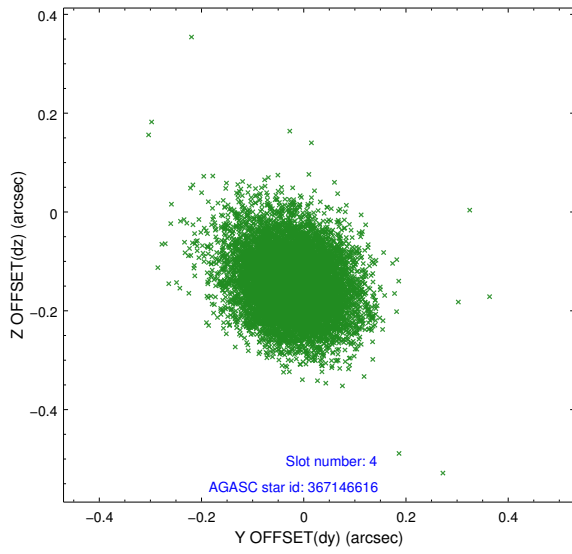
slot	status	id	mag	n_pts	med_dy	med_dz	dr1	dr2	ra	dec	mean_y	mean_z
0	FID	HRC-I-1	7.00	4924	-0.073	-0.012	0.009	0.018	0.000000	0.000000	-767.23	-1297.53
1	FID	HRC-I-2	7.03	4924	0.219	-0.108	0.010	0.015	0.000000	0.000000	845.54	-1299.47
2	FID	HRC-I-3	7.09	4924	-0.026	0.030	0.013	0.019	0.000000	0.000000	-1195.47	1006.82
3	GUIDE	367139648	8.17	9845	0.077	0.103	0.069	0.112	11.021290	40.433909	2341.70	2230.56
4	GUIDE	367146616	8.86	9841	-0.022	-0.146	0.090	0.151	11.418645	41.190163	-575.60	1958.01
5	GUIDE	367148872	7.21	9847	-0.101	-0.057	0.077	0.126	10.505940	40.688258	2157.75	559.62
6	GUIDE	367663272	9.29	9839	0.020	0.159	0.110	0.178	10.656279	41.699429	-1279.16	-706.60
7	GUIDE	367674552	8.85	9839	0.022	-0.057	0.086	0.142	11.016238	41.570845	-1303.09	367.10

2.4 Star Slots

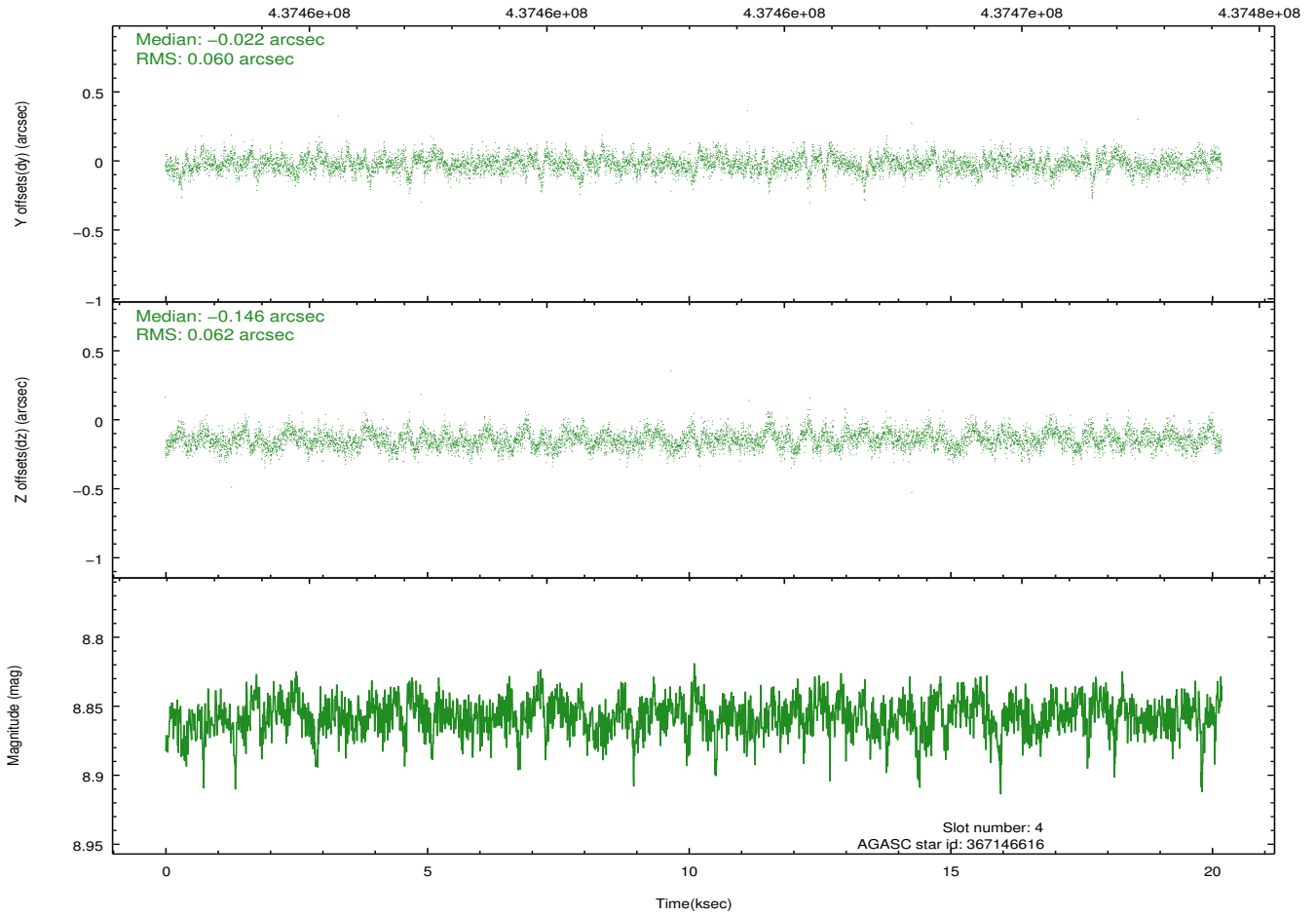
2.4.1 Slot 3



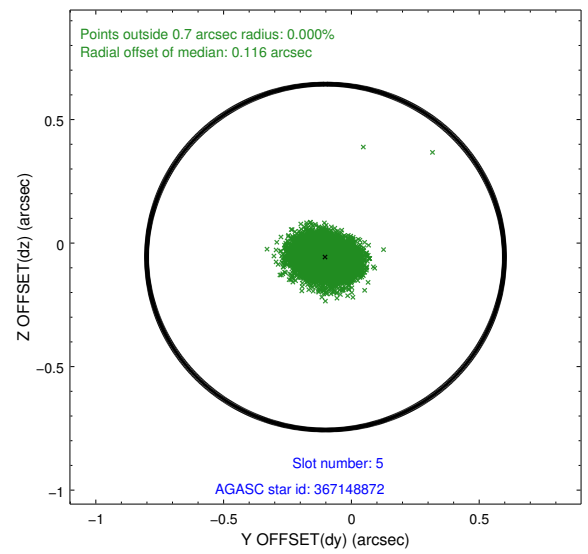
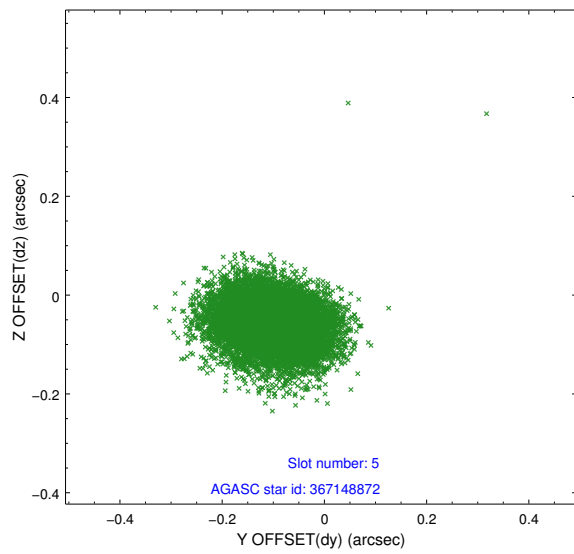
2.4.2 Slot 4



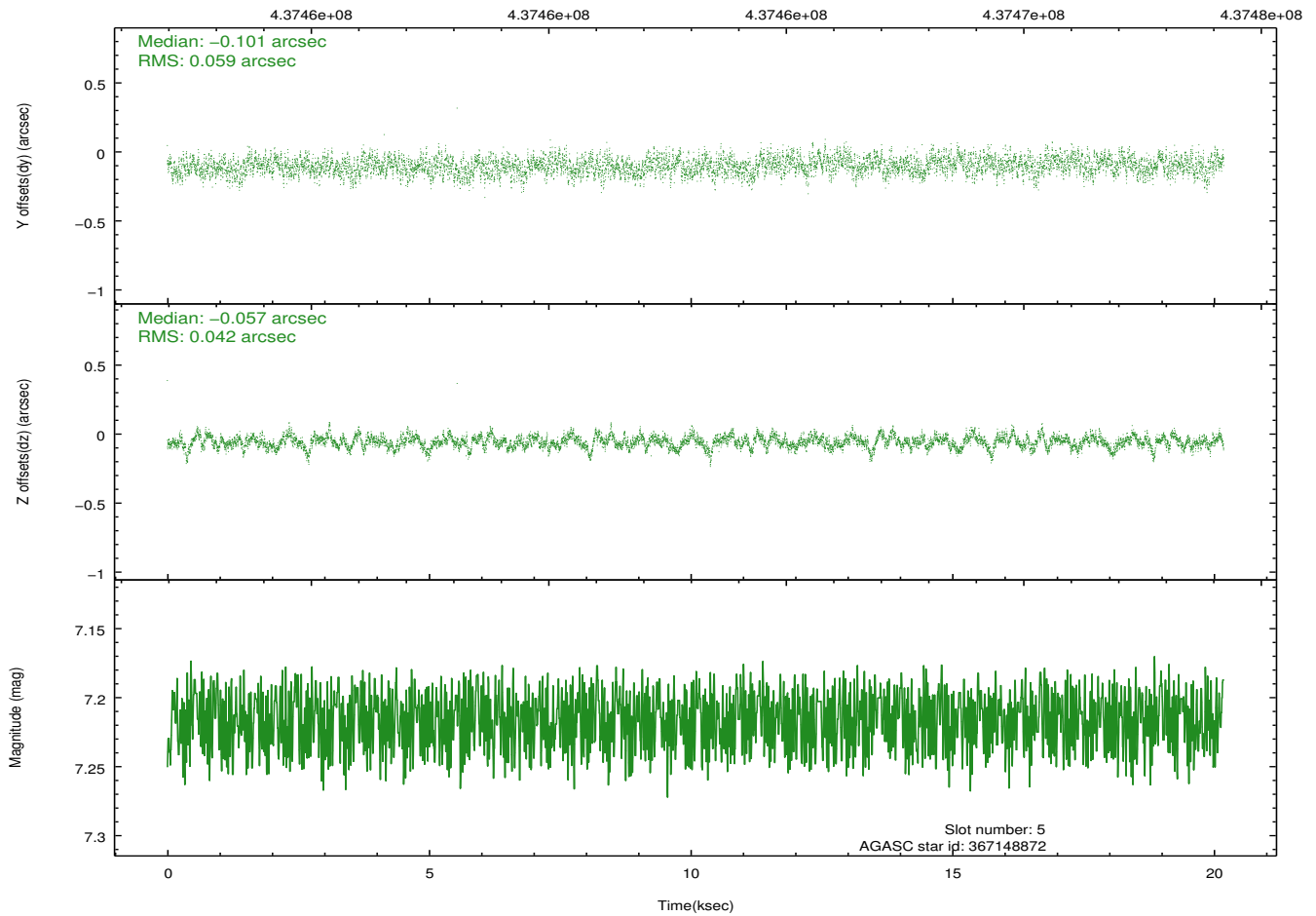
Time (s)



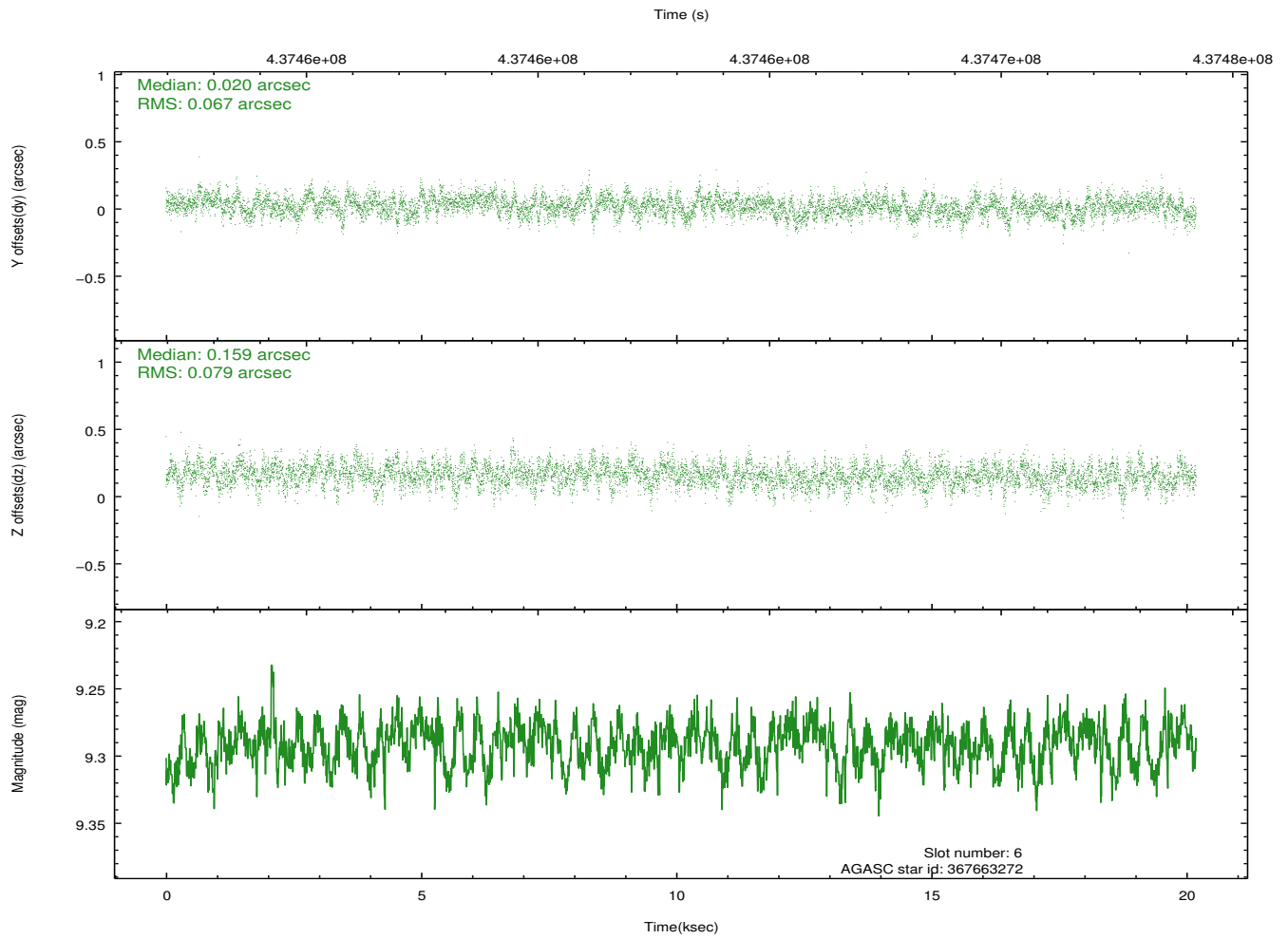
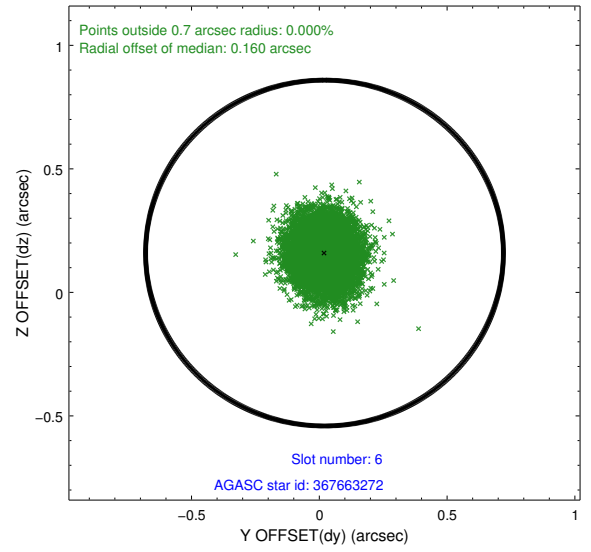
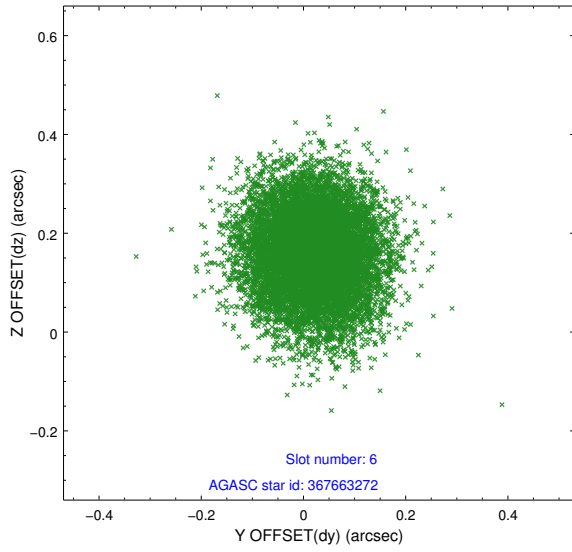
2.4.3 Slot 5



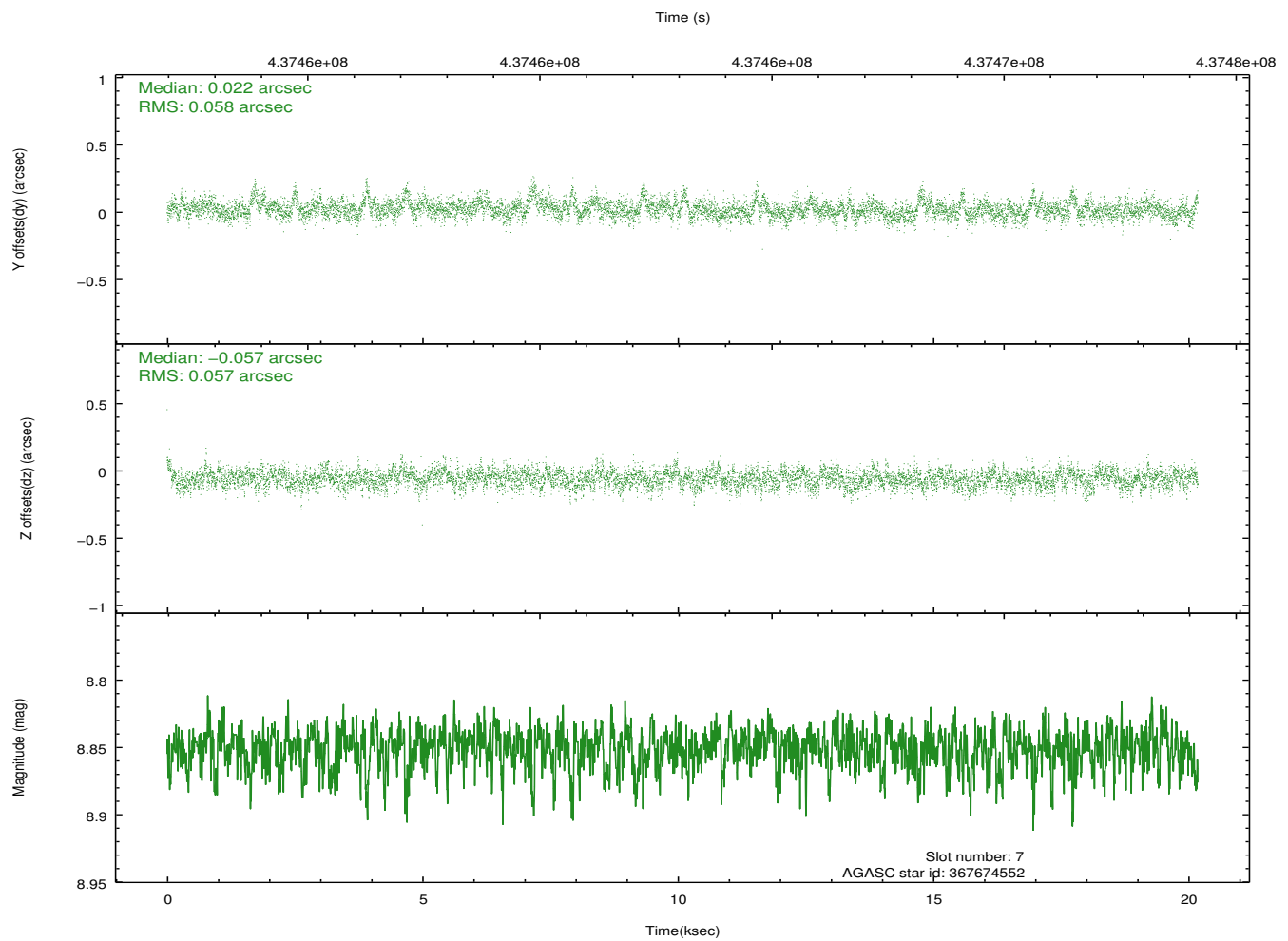
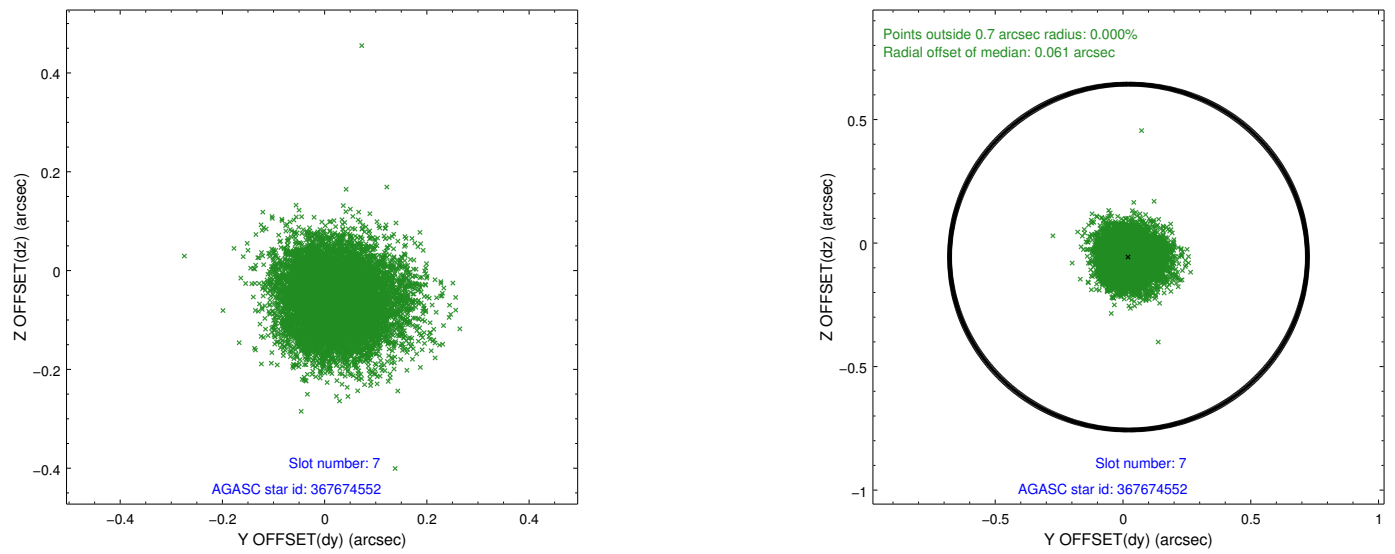
Time (s)



2.4.4 Slot 6

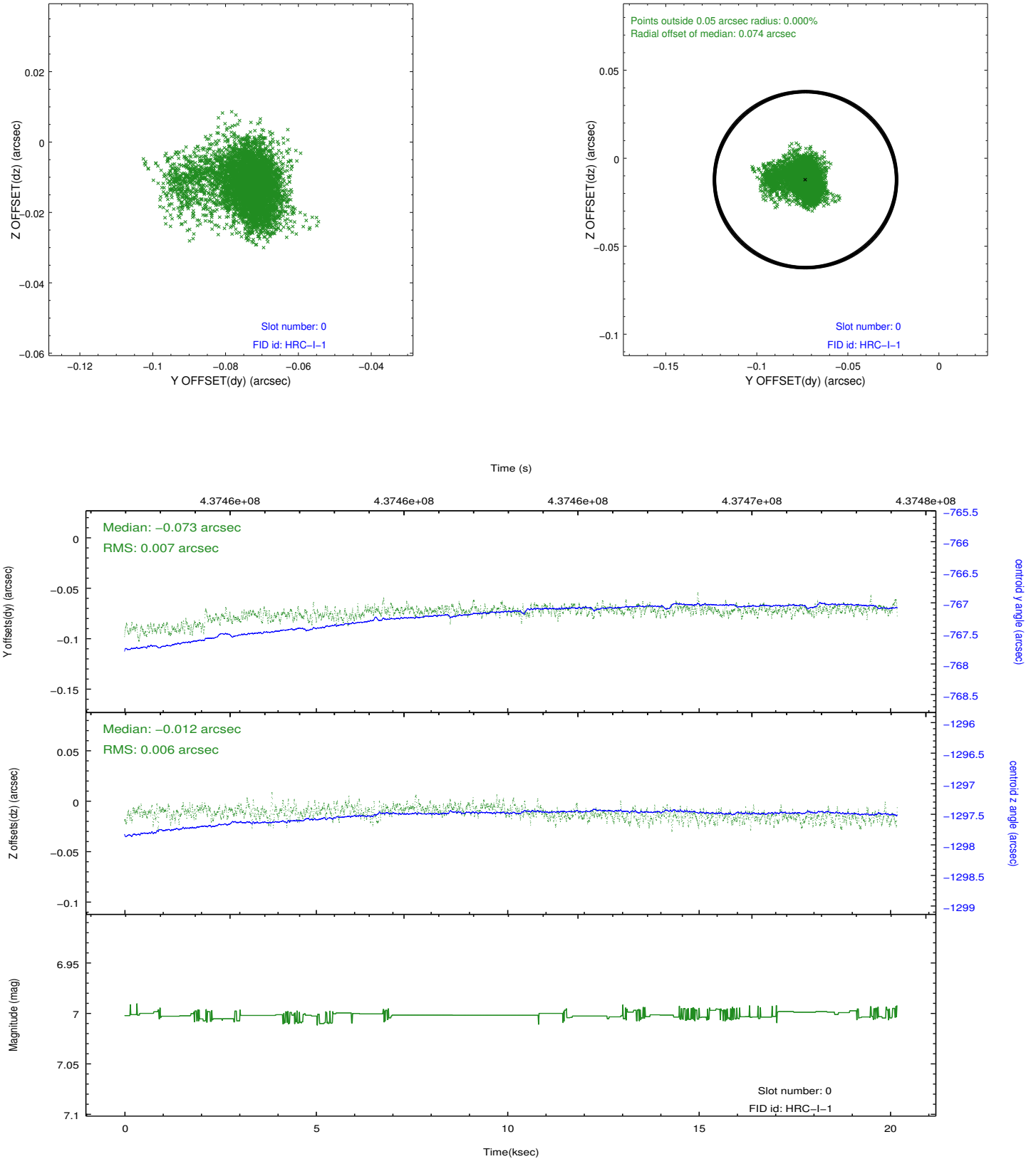


2.4.5 Slot 7

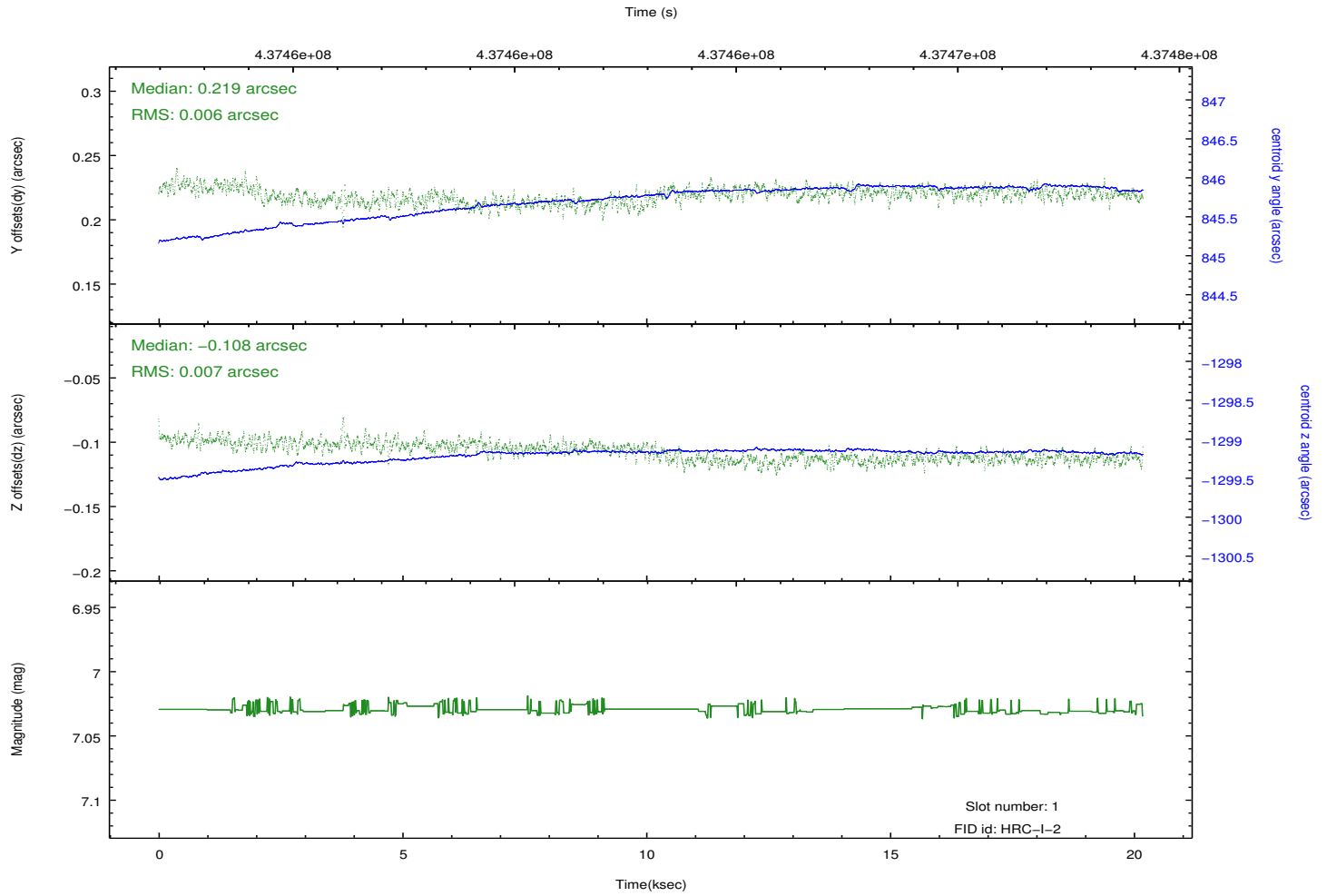
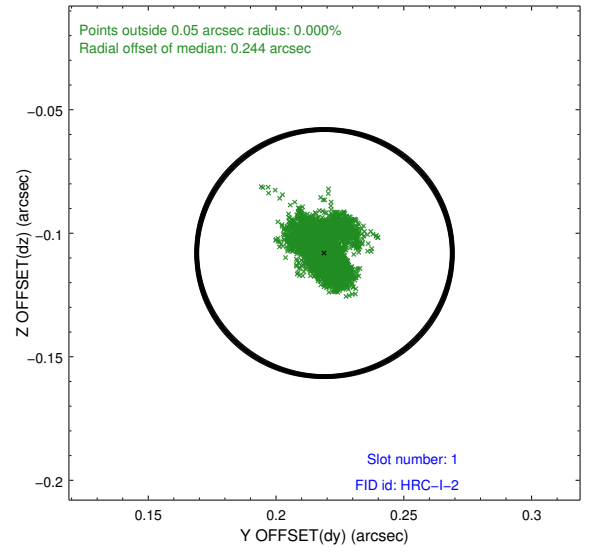
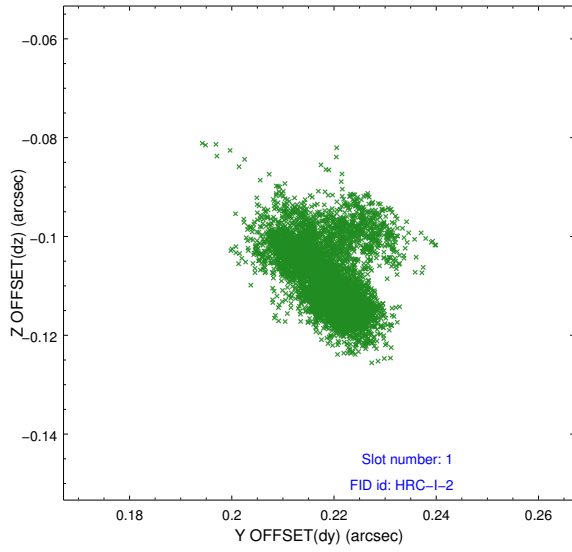


2.5 FID Slots

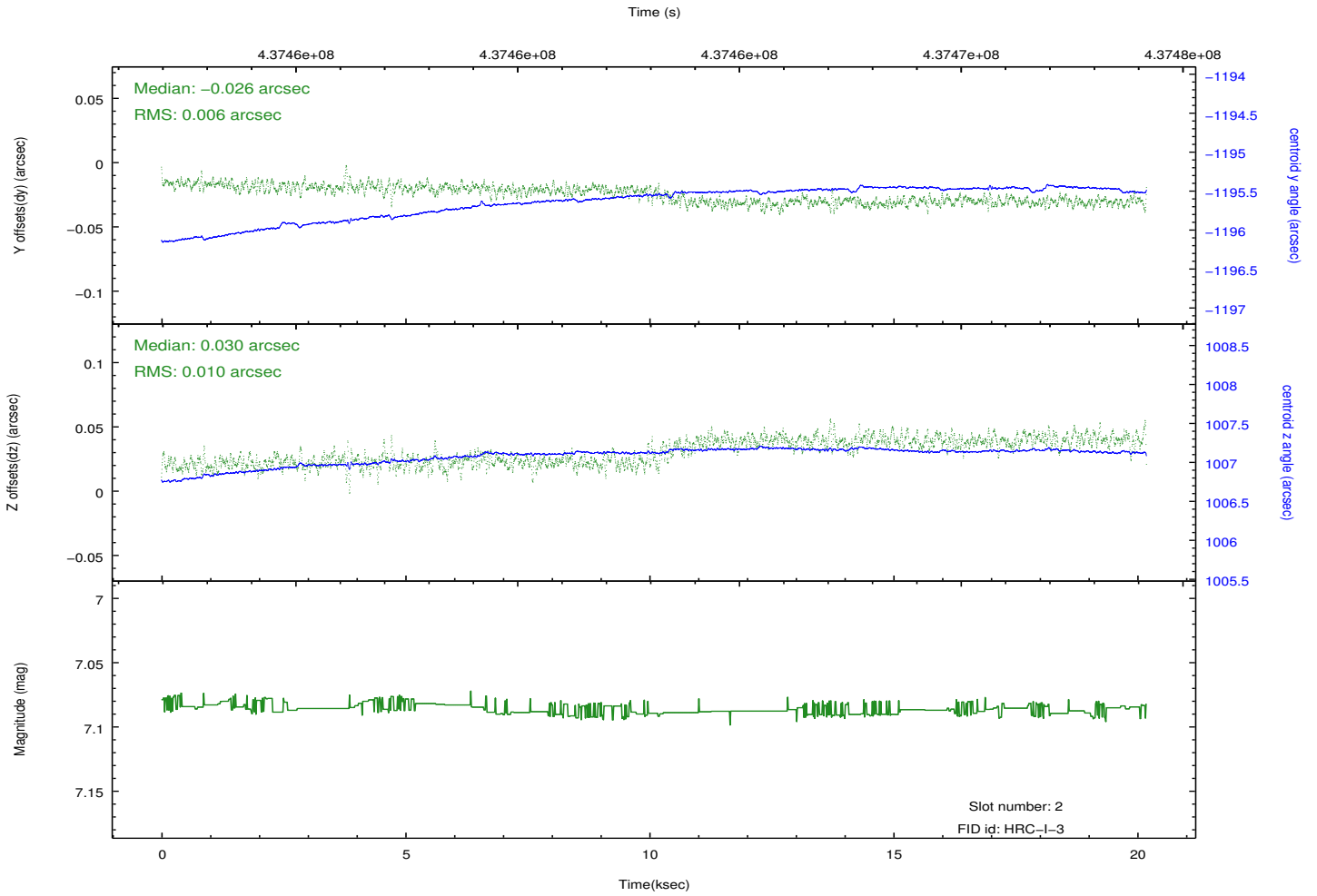
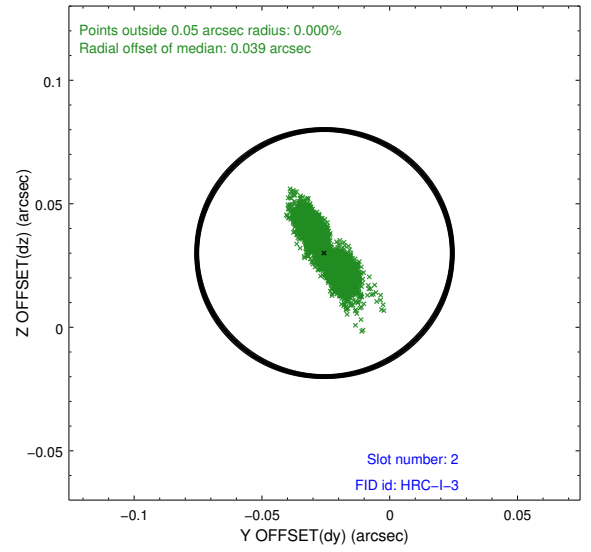
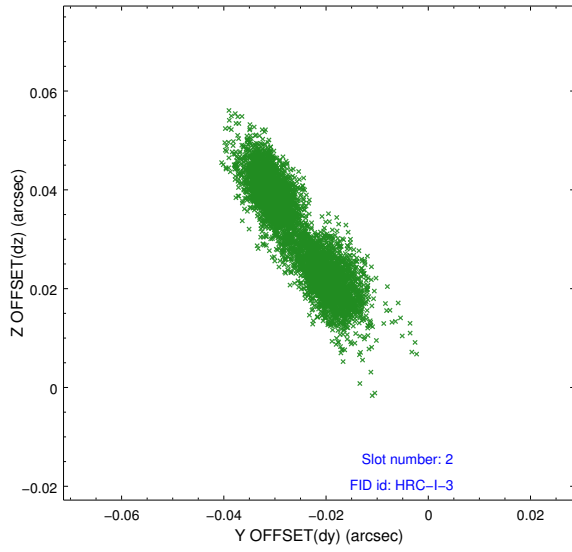
2.5.1 Slot 0



2.5.2 Slot 1



2.5.3 Slot 2



A Summary

A.1 Status

V&V Scientist	Jen Lauer
V&V Date (YYYY-MM-DD)	2012.08.06
V&V Edition	1
V&V Disposition and Status	OK
V&V Charge Time	20.185582312763

A.2 Comments

Joint Proposal: CXO-XMM. Window constraint met.