

V&V Reference Report

L2 ASCDS Version : 8.5.1.1

Observation 13397 - L2 Version 3
Chandra X-Ray Center

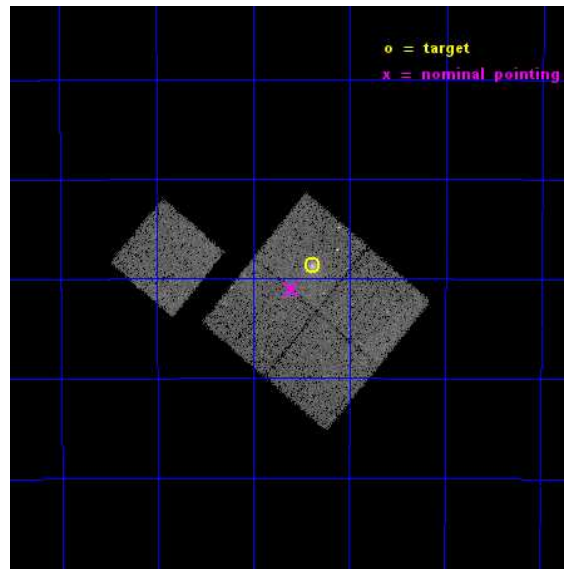
L2 Processing Date : Dec 1 2014

Contents

1	Front	2
2	OBI	3
2.1	OBI	3
2.1.1	Images	3
2.1.2	Bias	3
2.1.3	Parameters	4
2.1.4	Events	4
2.2	Compared Parameters	5
2.3	Aspect	6
2.4	Star Slots	9
2.4.1	Slot 3	9
2.4.2	Slot 4	10
2.4.3	Slot 5	11
2.4.4	Slot 6	12
2.4.5	Slot 7	13
2.5	FID Slots	14
2.5.1	Slot 0	14
2.5.2	Slot 1	15
2.5.3	Slot 2	16
A	Summary	17
A.1	Status	17
A.2	Comments	17

1 Front

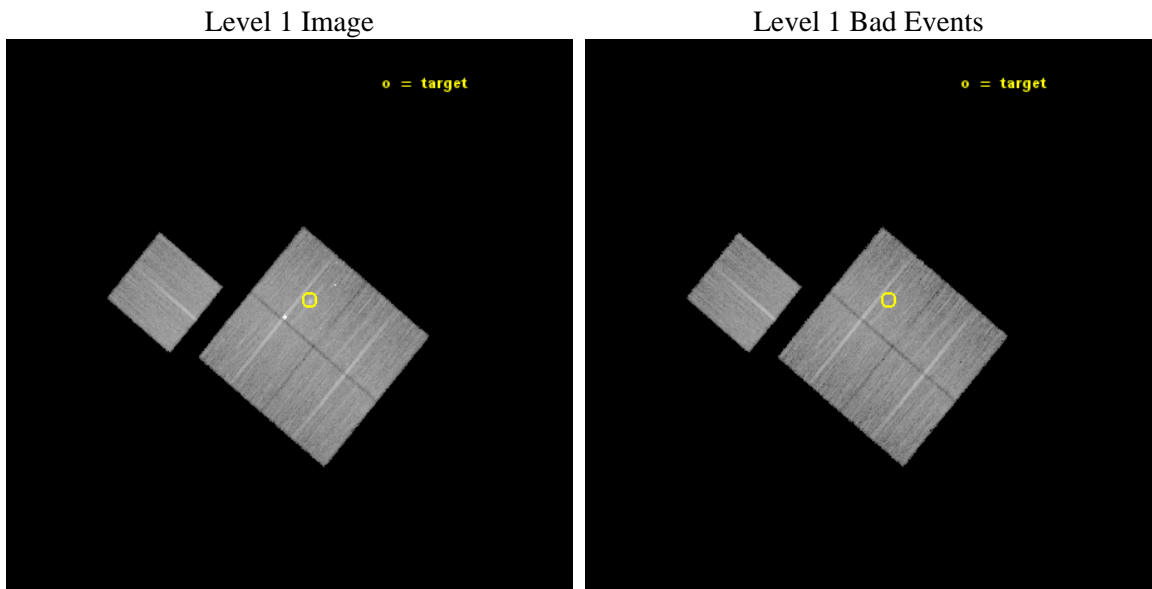
seq_num	801084	Sequence number
obs_id	13397	Observation id
title	Chandra Observations of a Sample of High Redshift SZE Galaxy Clusters	Proposal title
observer	Dr. Stephen Murray	Principal investigator
object	SPT-CLJ0417-4748	Source name
dtycycle	0	
cycle	P	events from which exps? Prim/Second/Both
ra_targ	64.34625	Observer's specified target RA [deg]
dec_targ	-47.811306	Observer's specified target Dec [deg]
ra_nom	64.400801572821	Nominal RA [deg]
dec_nom	-47.851588533798	Nominal Dec [deg]
roll_nom	309.94826931204	Nominal Roll [deg]
revision	3	Processing version of data
ontime	22071.959169507	Sum of GTIs [s]
livetime	21783.572773817	Livetime [s]
ontime0	22071.959169507	Sum of GTIs [s]
ontime1	22075.100169778	Sum of GTIs [s]
ontime2	22071.959169507	Sum of GTIs [s]
ontime3	22071.959169507	Sum of GTIs [s]
ontime6	22068.818139136	Sum of GTIs [s]
l2events	64622	Number of level 2 events



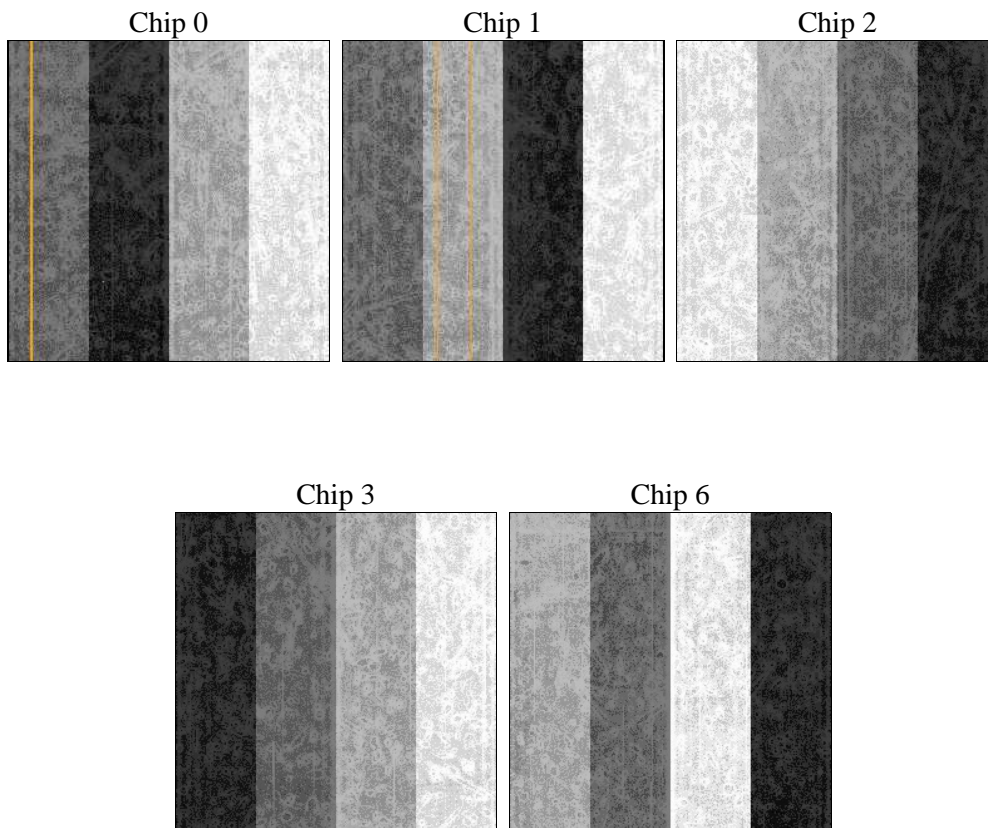
2 OBI

2.1 OBI

2.1.1 Images



2.1.2 Bias



2.1.3 Parameters

obi_num	0	Obi number	sched_exp_time	22000.000000	[s] Scheduled observation exposure time
ascdsver	10.3	Processing system revision	ontime	22071.959169507	Sum of GTIs [s]
caldbver	4.6.4	 	ontime0	22071.959169507	Sum of GTIs [s]
date	2014-12-01T03:27:29	Date and time of file creation	ontime1	22075.100169778	Sum of GTIs [s]
revision	3	Processing version of data	ontime2	22071.959169507	Sum of GTIs [s]
			ontime3	22071.959169507	Sum of GTIs [s]
			ontime6	22068.818139136	Sum of GTIs [s]
			l1events	605184	Number of level 1 events

2.1.4 Events

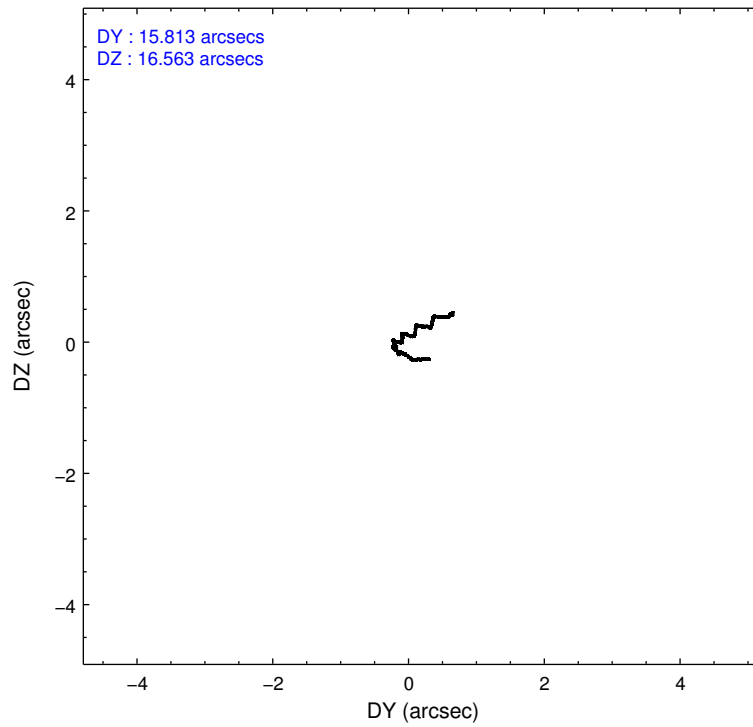
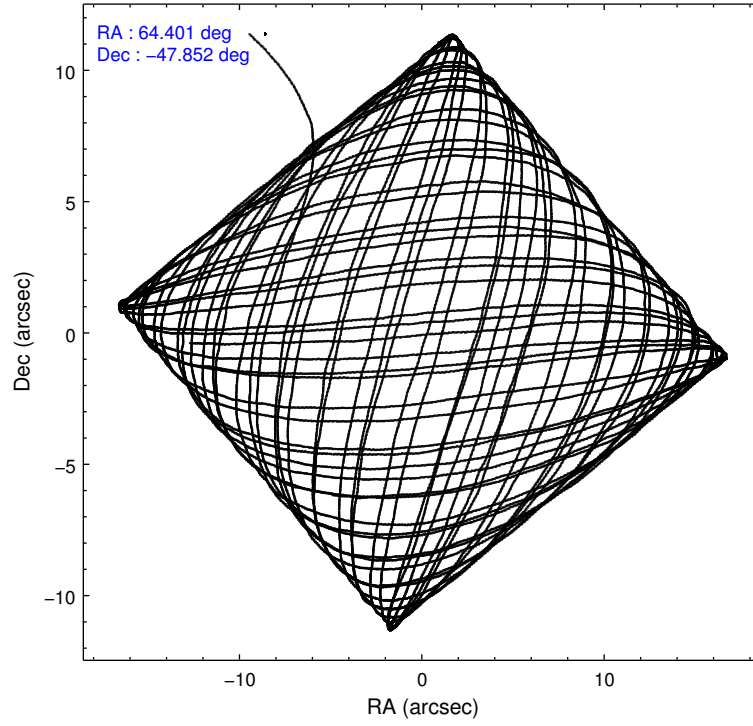
	ccd 0	ccd 1	ccd 2	ccd 3	ccd 6
level 1 events	113705	114379	121198	130134	125768
rejected events	99505	98752	107108	105636	111148
rejected %	87%	86%	88%	81%	88%

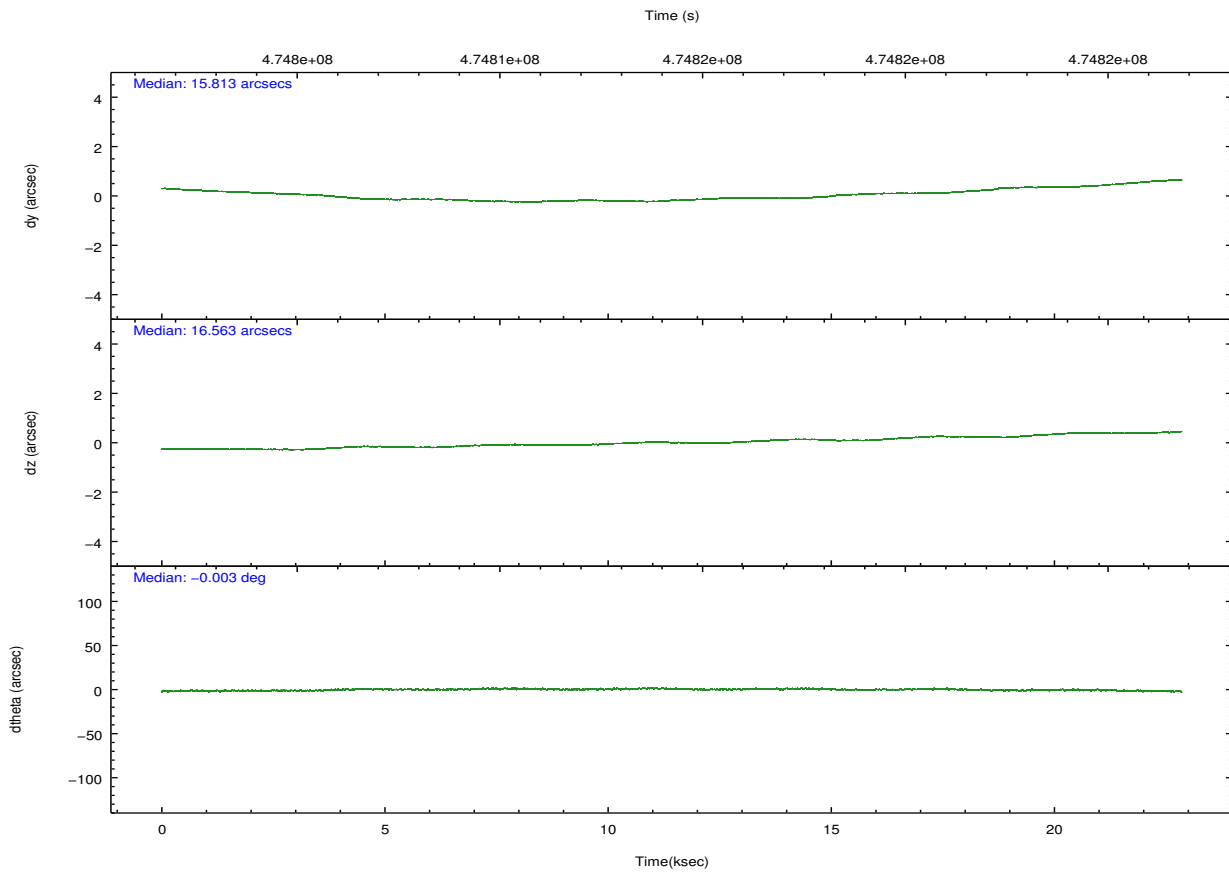
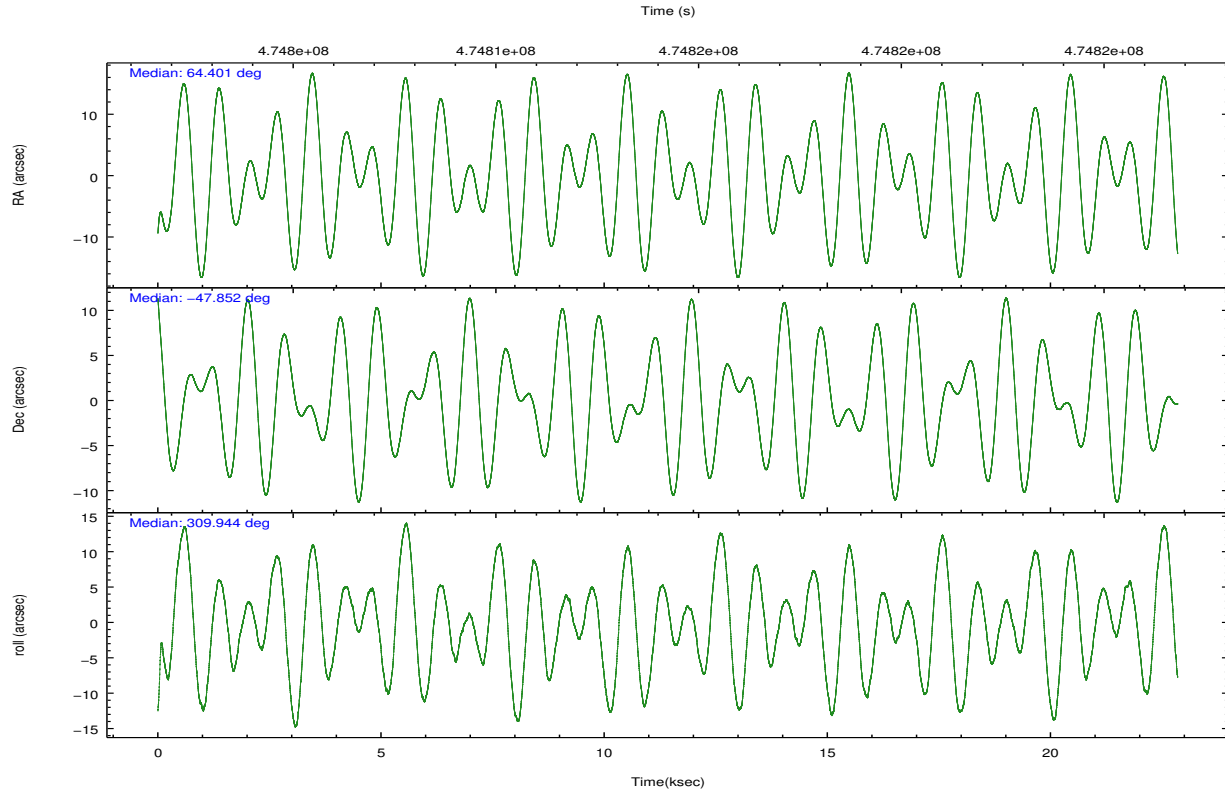
	ccd 0	ccd 1	ccd 2	ccd 3	ccd 6
grade 0 events	4852	5386	5168	8216	5032
	4%	4%	4%	6%	4%
grade 1 events	68	69	61	79	64
	0%	0%	0%	0%	0%
grade 2 events	3627	3882	3372	10196	3368
	3%	3%	2%	7%	2%
grade 3 events	1522	1443	1357	1555	1437
	1%	1%	1%	1%	1%
grade 4 events	1362	1537	1436	1611	1448
	1%	1%	1%	1%	1%
grade 5 events	5370	5972	5121	6234	5929
	4%	5%	4%	4%	4%
grade 6 events	2843	3380	2758	2929	3339
	2%	2%	2%	2%	2%
grade 7 events	94061	92710	101925	99314	105151
	82%	81%	84%	76%	83%

2.2 Compared Parameters

Parameter	Planned	Actual	Parameter	Planned	Actual
Instrument	ACIS	ACIS	Obspar format version number	7	7
Detector	ACIS-01236	ACIS-01236	Obspar file type	PREDICTED	ACTUAL
Grating	NONE	NONE	Obspar update status	NONE	UPDATED
Data mode	VFAINT	VFAINT	CCD I0 on	Y	Y
Observation mode	POINTING	POINTING	CCD I1 on	Y	Y
[deg] Pointing RA	64.362256	64.40080157282088	CCD I2 on	Y	Y
[deg] Pointing Dec	-47.842243	-47.85158853379822	CCD I3 on	Y	Y
[deg] Pointing Roll	309.711016	309.9482693120442	CCD S0 on	N	N
[mm] SIM focus pos	-0.782348	-0.7809083437167272	CCD S1 on	N	N
[mm] SIM defocus	0	0.001439871863259334	CCD S2 on	O1	Y
[mm] SIM translation stage pos	-225.840463	-225.8433433320239	CCD S3 on	N	N
[mm] SIM translation stage offset	-7.752	-7.749109670905796	CCD S4 on	N	N
[s] Observation start time (MET)	474803667.184000	474802043.9676	CCD S5 on	N	N
Observation start date	2013-01-17T09:53:20	2013-01-17T09:27:23	Number of optional ACIS chips dropped	0	0
[s] Observation end time (MET)	474825667.184000	474826233.96891	On-chip summing requested	N	N
Observation end date	2013-01-17T16:00:00	2013-01-17T16:10:33	Subarray requested	NONE	NONE
Read mode	TIMED	TIMED	Alternating exposures requested	N	N
			[s] Primary exposure time	0.000000	3.1

2.3 Aspect





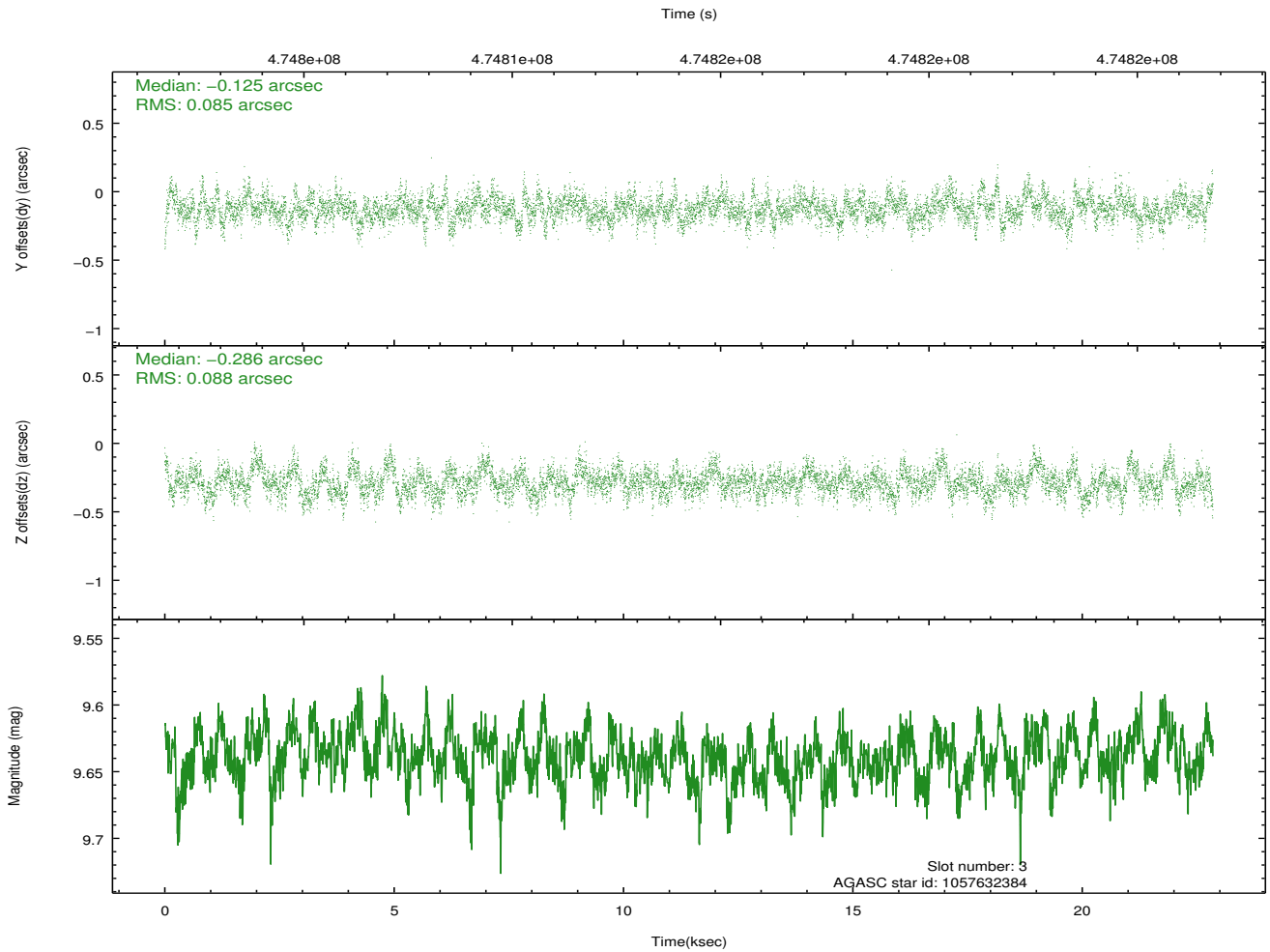
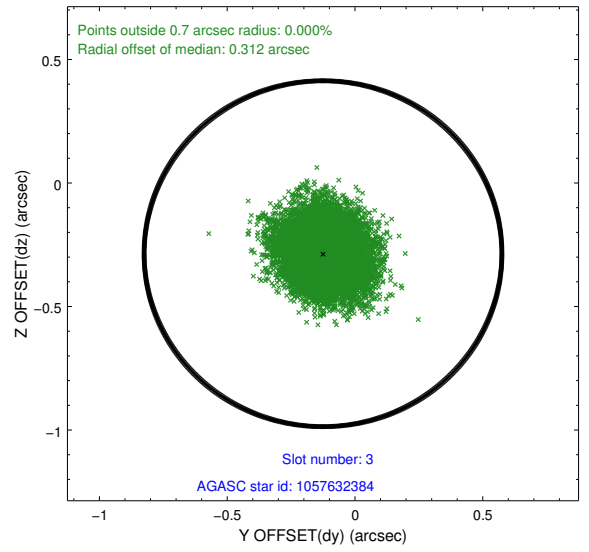
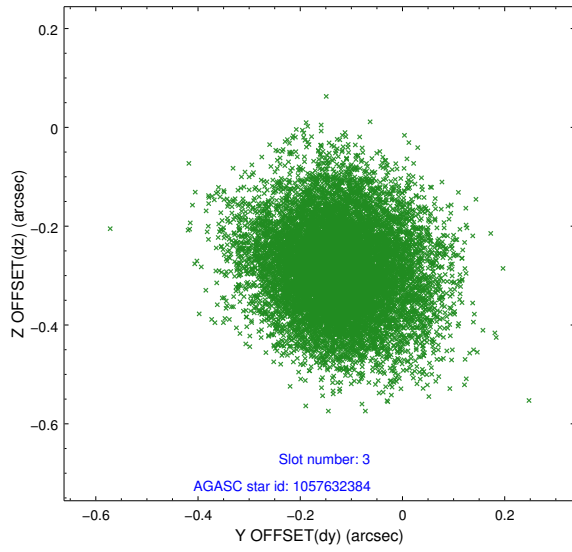
Slot Statistics

slot	status	used	id	mag	n_pts	med_dy	med_dz	dr1	dr2	ra	dec	mean_y	mean_z
0	FID		ACIS-I-1	7.15	5573	0.177	-0.141	0.008	0.013	0.000000	0.000000	923.62	-999.44
1	FID		ACIS-I-5	7.14	5573	-0.325	0.137	0.008	0.013	0.000000	0.000000	-1824.94	898.19
2	FID		ACIS-I-6	7.15	5573	0.057	0.075	0.011	0.018	0.000000	0.000000	388.85	1542.83
3	GUIDE	used	1057632384	9.64	11142	-0.125	-0.286	0.131	0.212	63.940426	-47.375564	-1946.72	280.93
4	GUIDE	used	1057885312	8.75	11137	-0.056	0.199	0.085	0.137	63.453714	-48.106999	-651.90	-2296.88
5	GUIDE	used	1058020072	9.15	11071	-0.050	0.192	0.113	0.188	64.496547	-48.395876	1739.00	-1026.37
6	GUIDE	used	1058021376	8.42	11143	0.038	-0.014	0.093	0.148	64.219752	-48.515728	1648.98	-1810.33
7	GUIDE	used	1058013768	9.77	11132	0.199	-0.099	0.152	0.239	65.677375	-47.903231	2218.17	2284.12

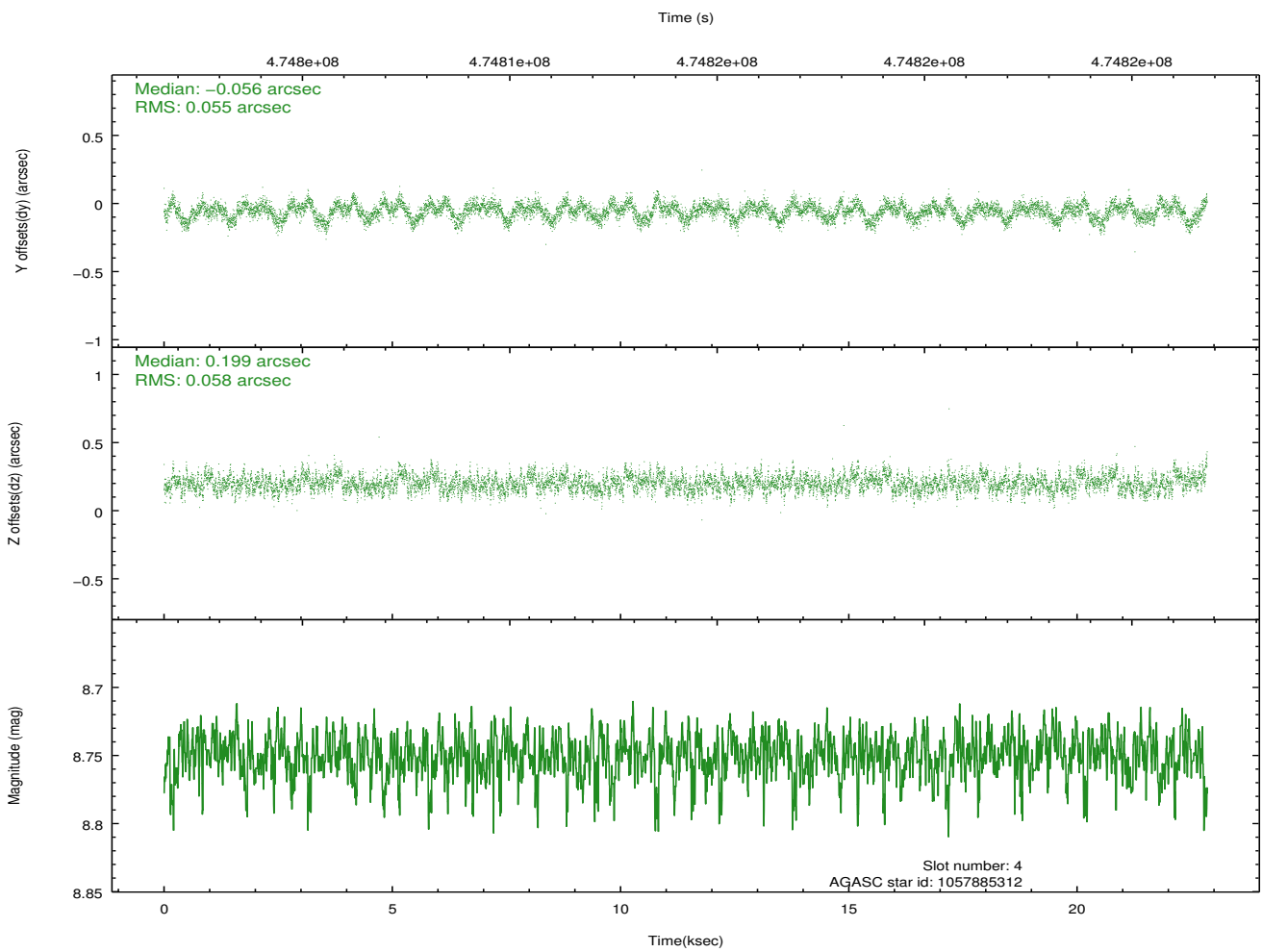
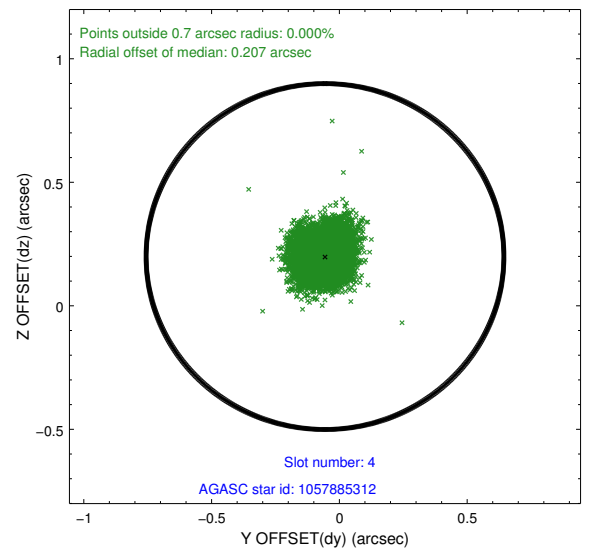
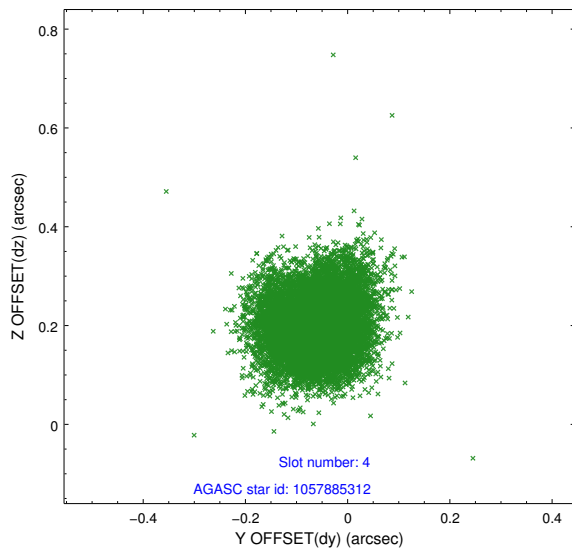
∞

2.4 Star Slots

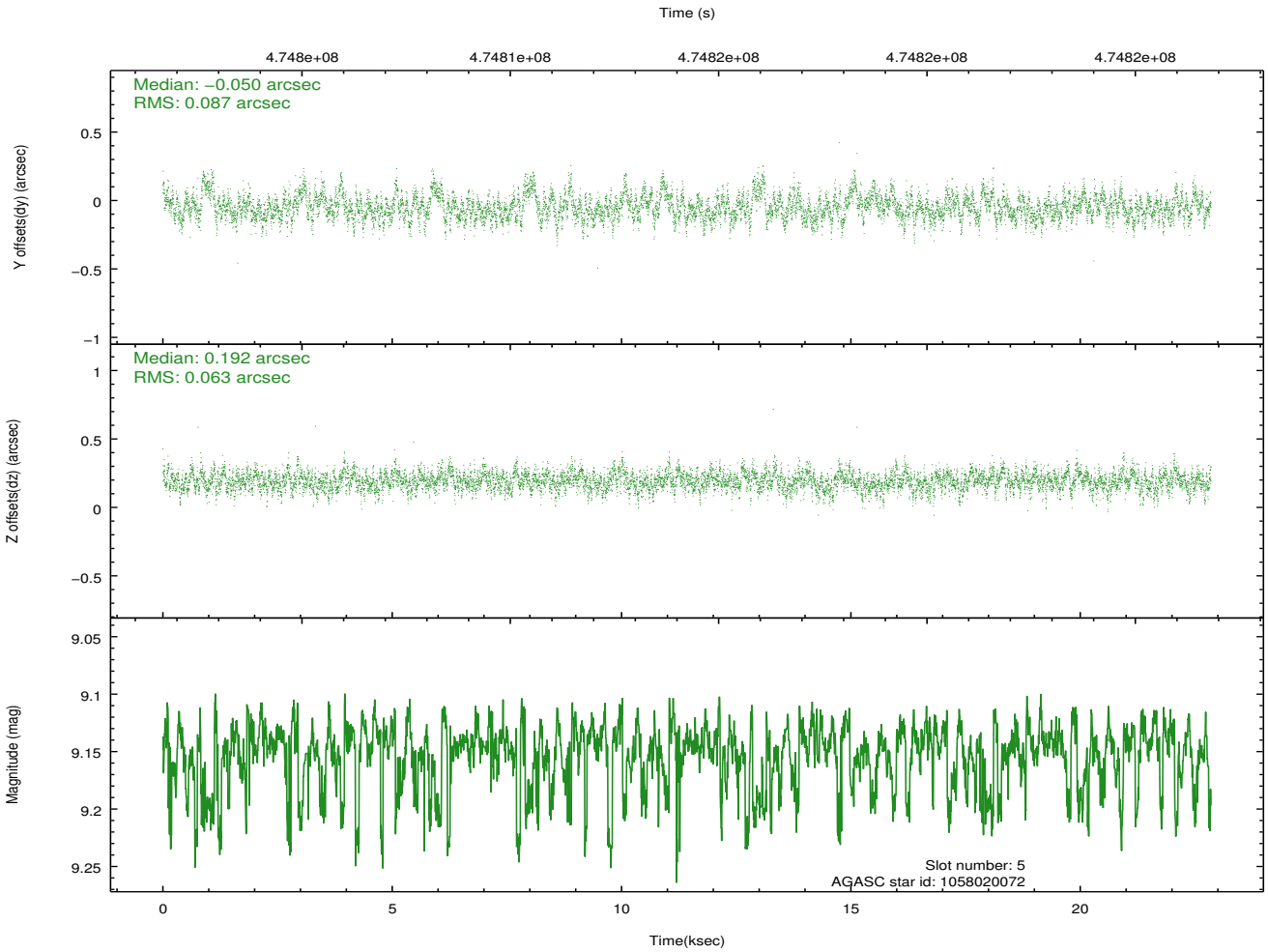
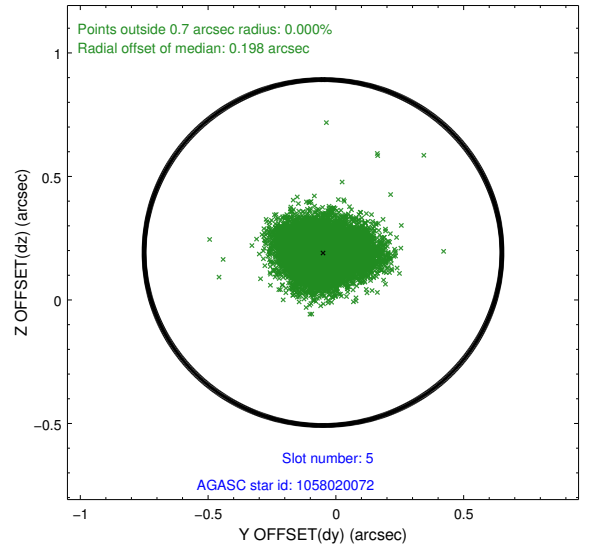
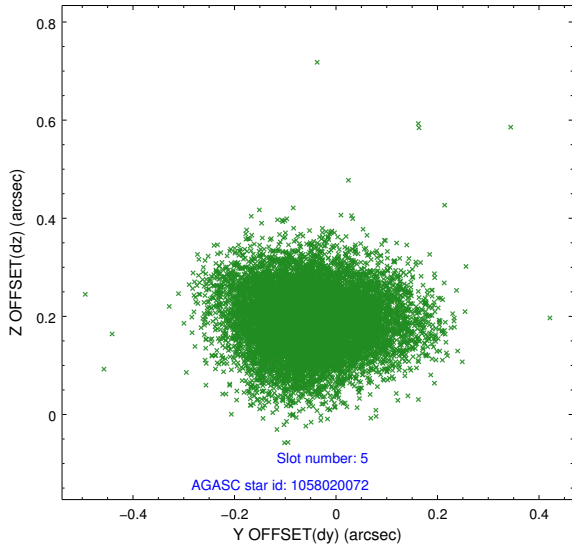
2.4.1 Slot 3



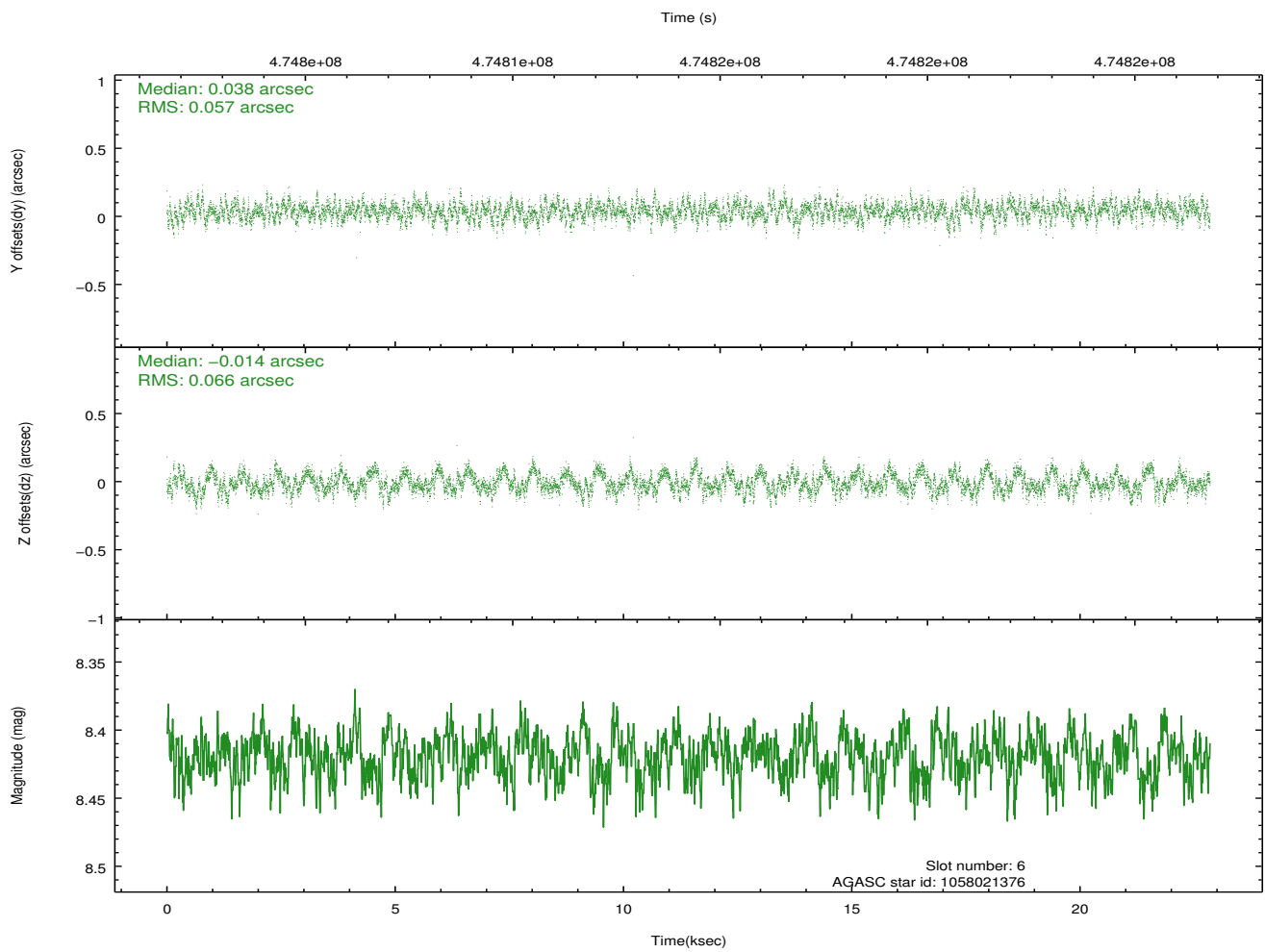
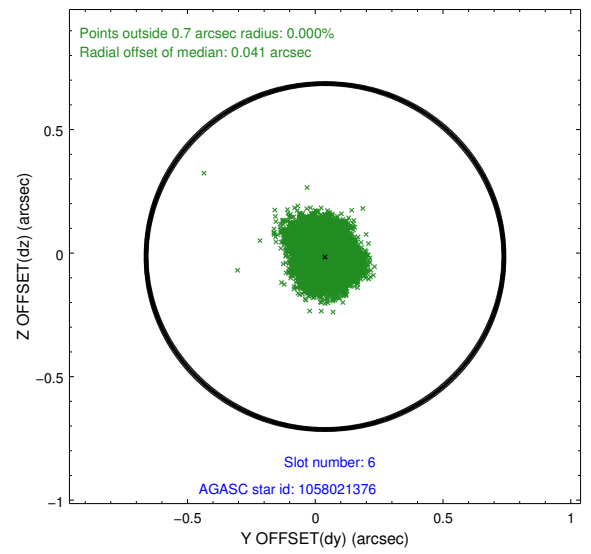
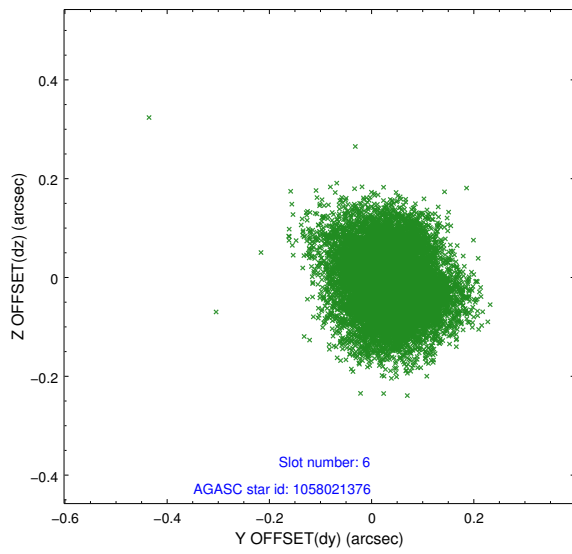
2.4.2 Slot 4



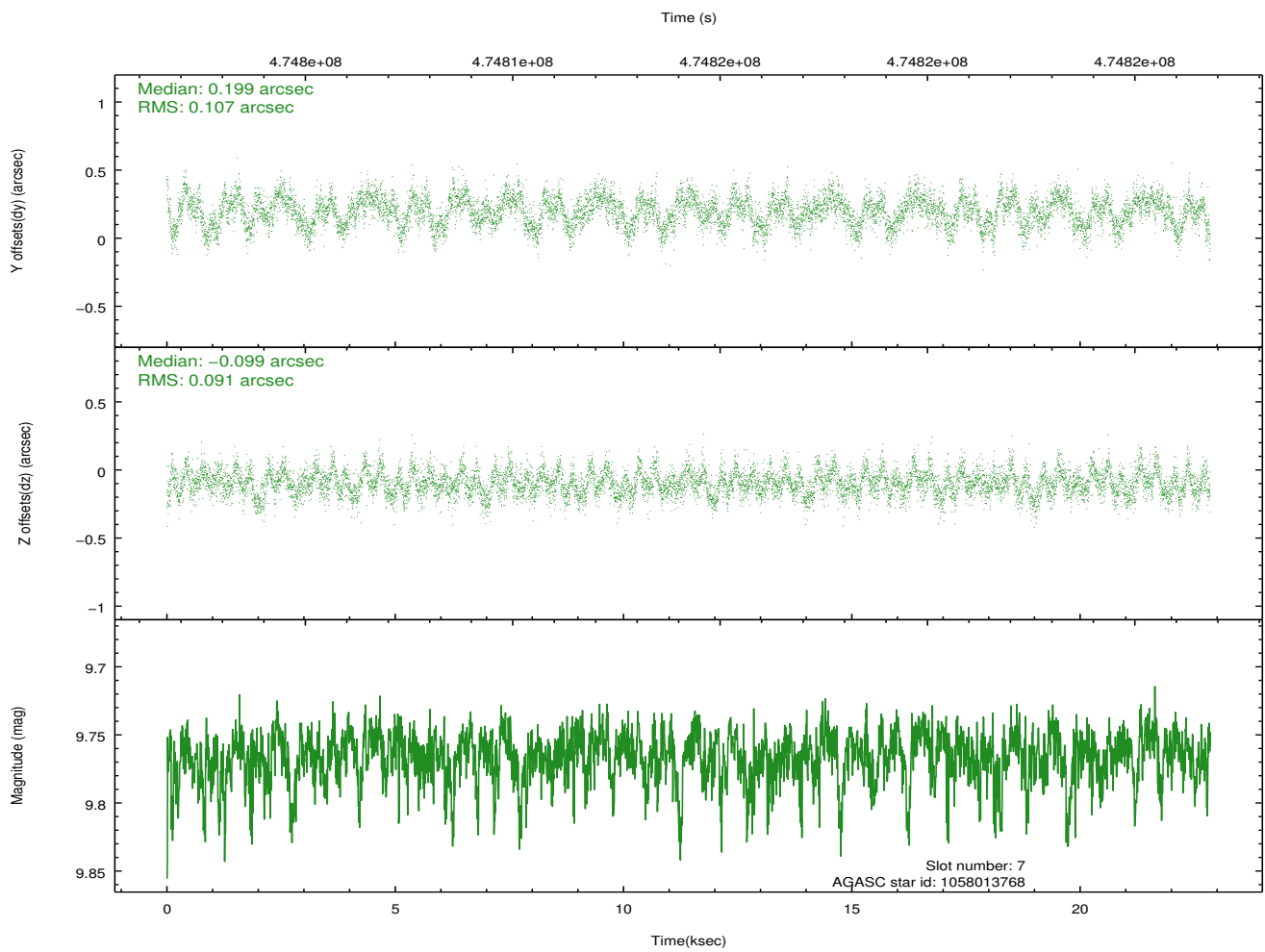
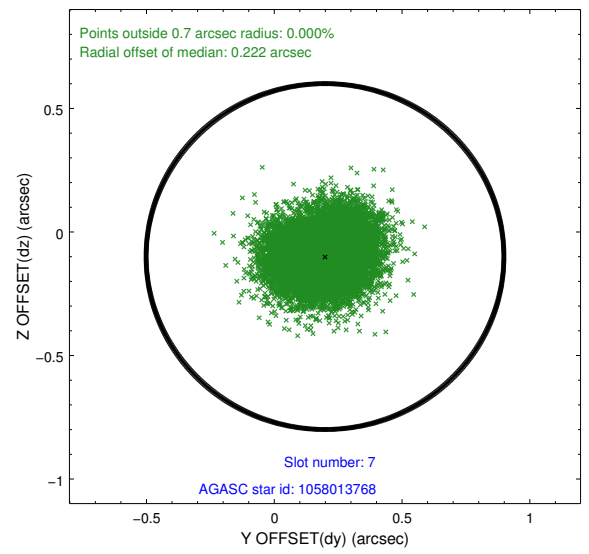
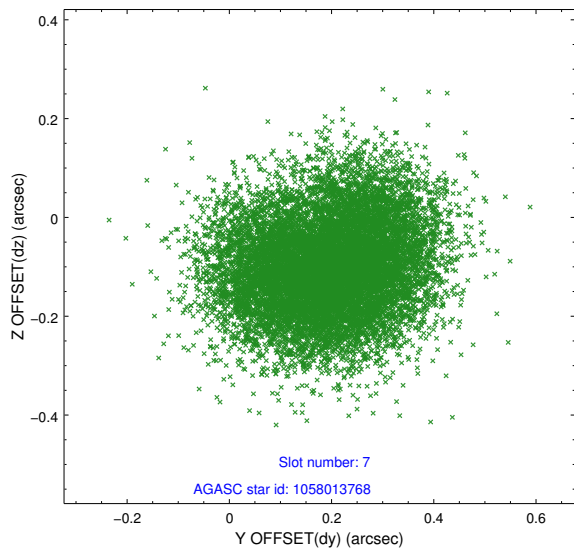
2.4.3 Slot 5



2.4.4 Slot 6

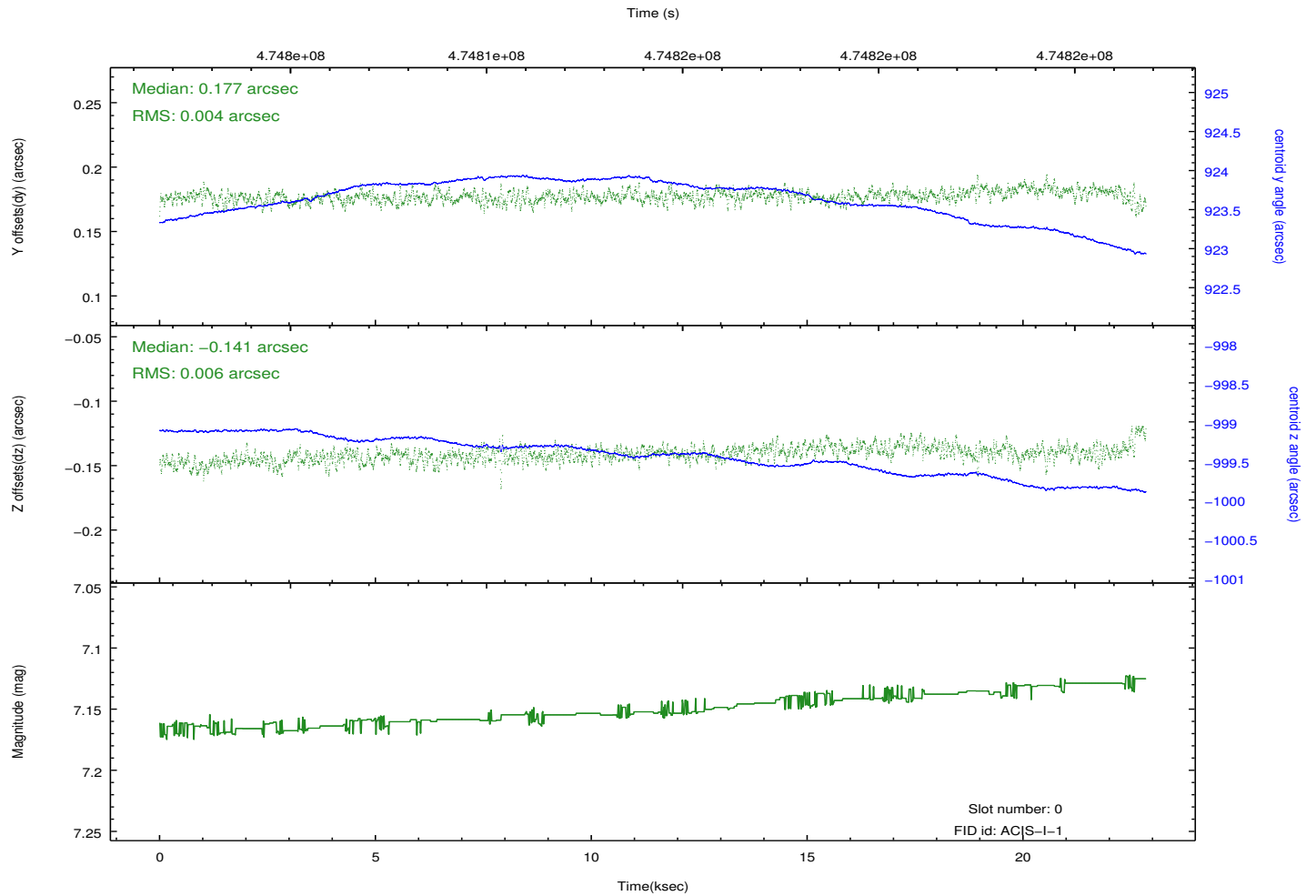
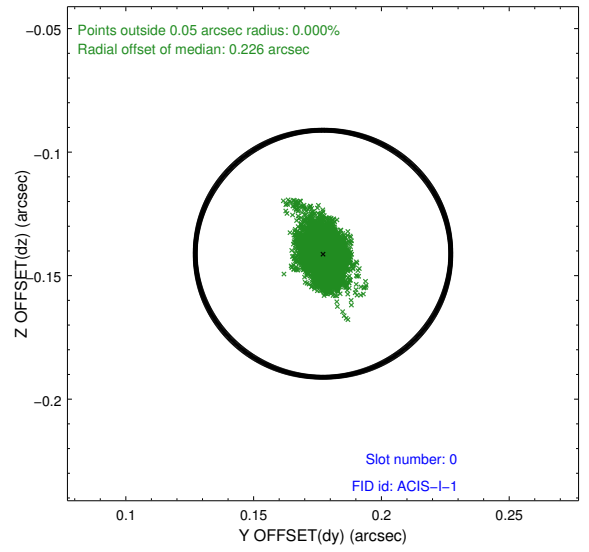
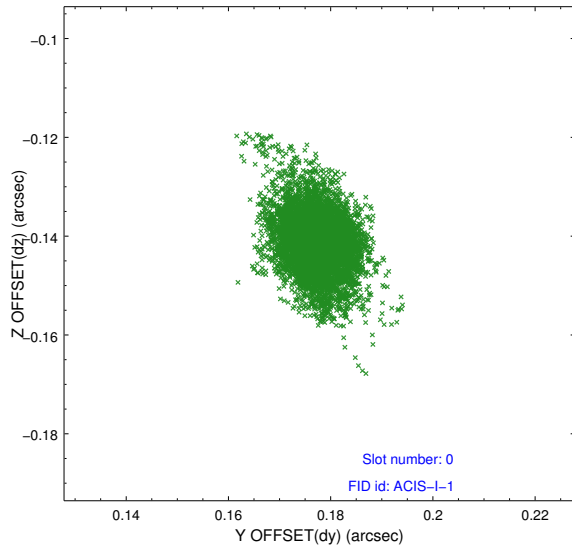


2.4.5 Slot 7

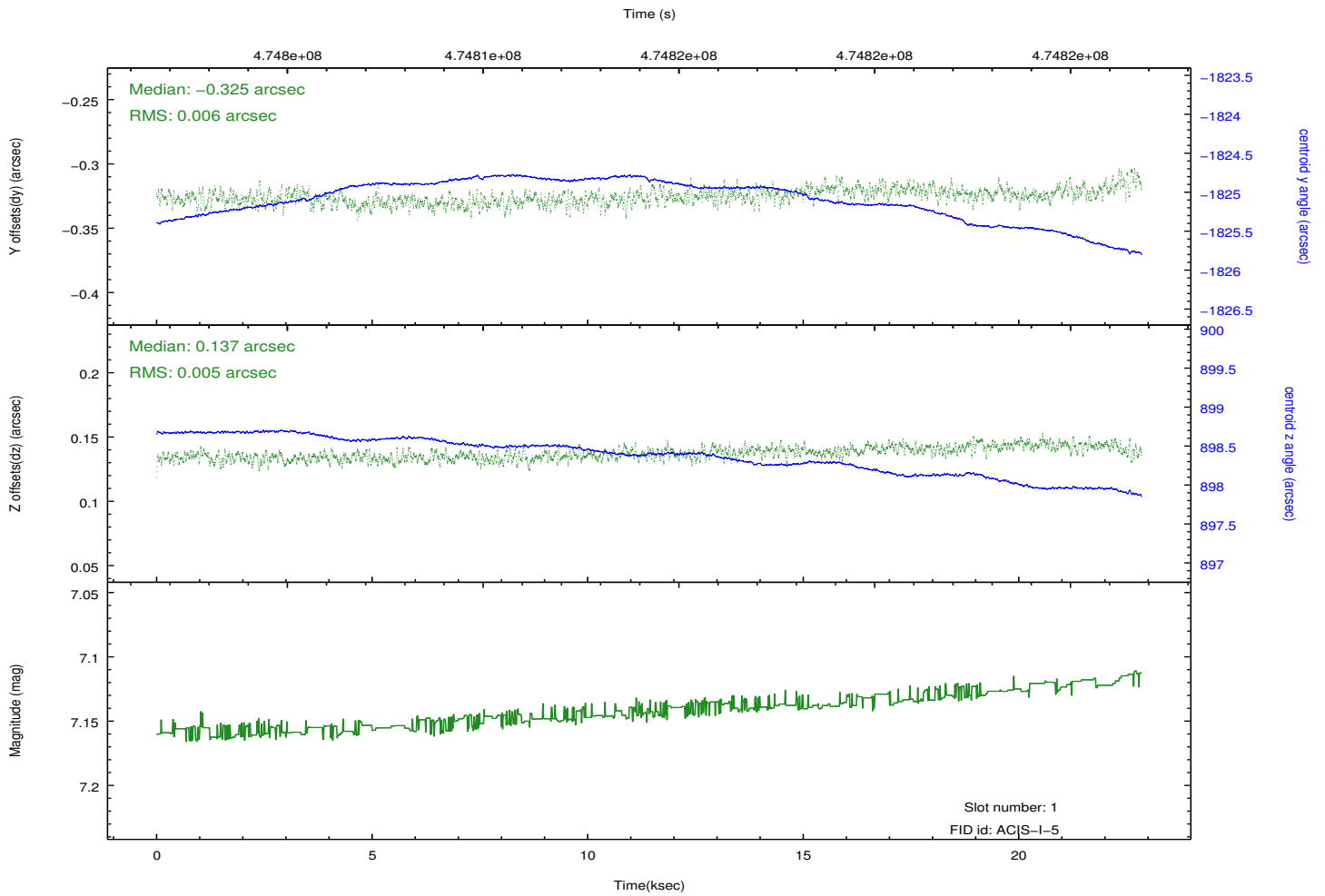
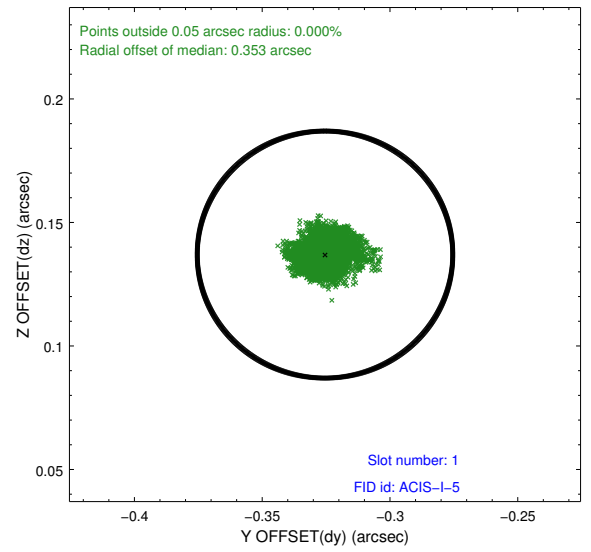
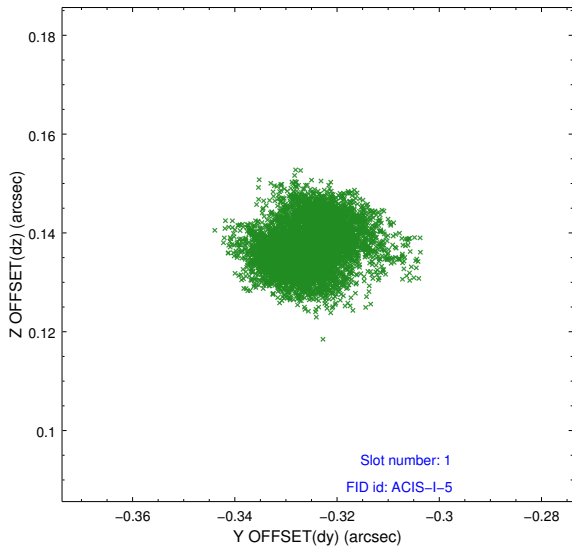


2.5 FID Slots

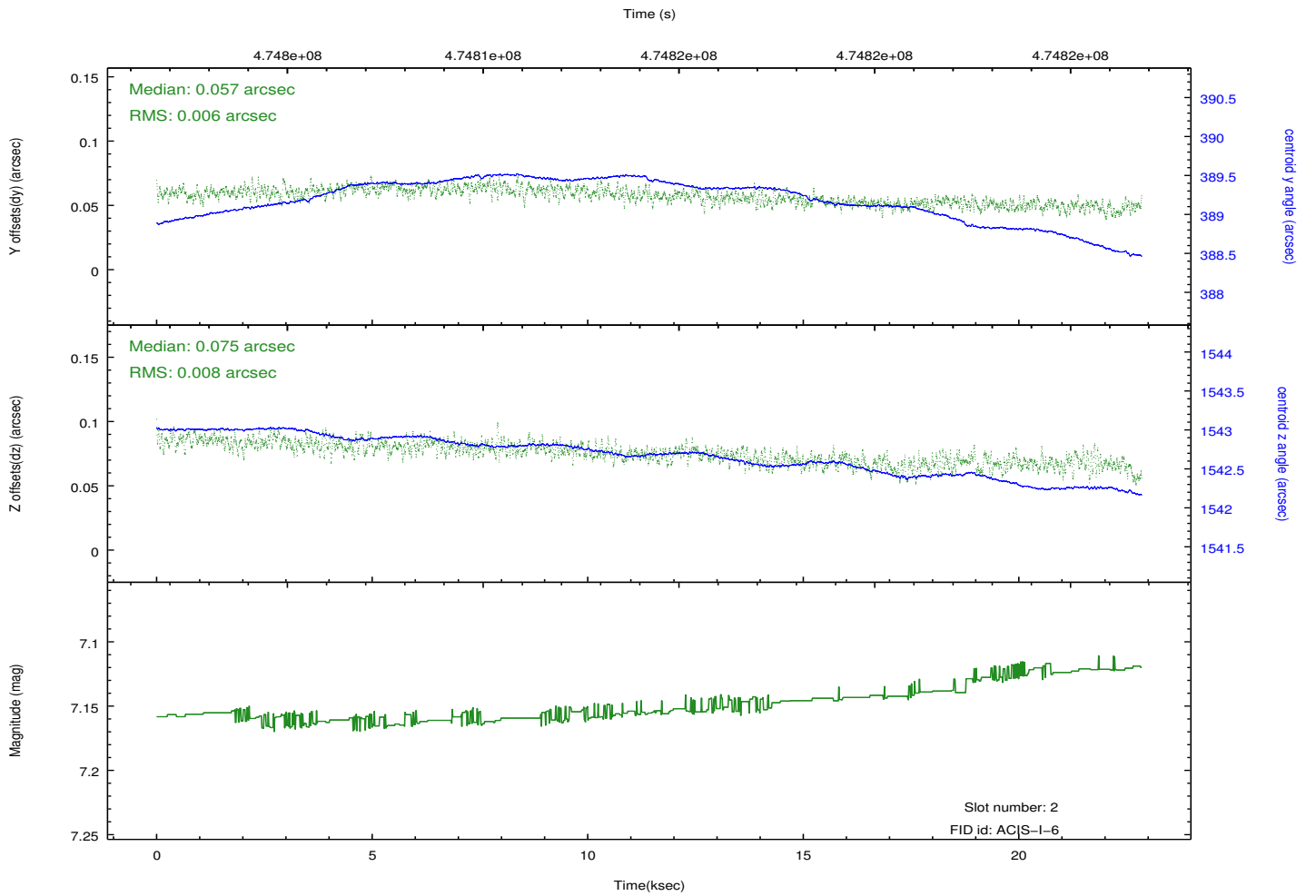
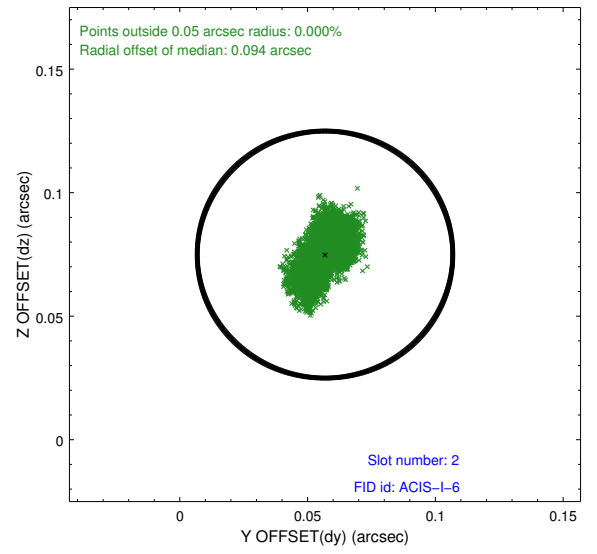
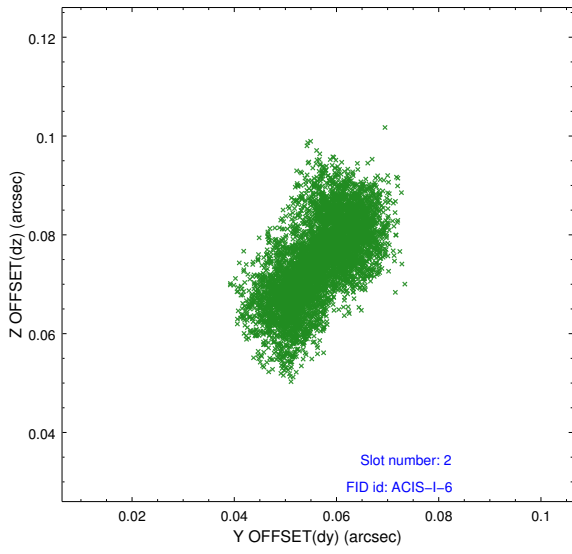
2.5.1 Slot 0



2.5.2 Slot 1



2.5.3 Slot 2



A Summary

A.1 Status

V&V Scientist	Beth Sundheim
V&V Date (YYYY-MM-DD)	2014.12.04
V&V Edition	1
V&V Disposition and Status	OK
V&V Charge Time	22.071959169507

A.2 Comments

These data have been reprocessed with new aspect alignment calibration files that correct small mean offsets (up to 0.4 arcsecs) and improve overall astrometric accuracy. The new calibration was determined using data from the time period being reprocessed and was performed using cross-correlation of X-ray sources with radio and optical counterparts.