

V&V Reference Report

L2 ASCDS Version : 8.4.3

Observation 13517 - L2 Version 2
Chandra X-Ray Center

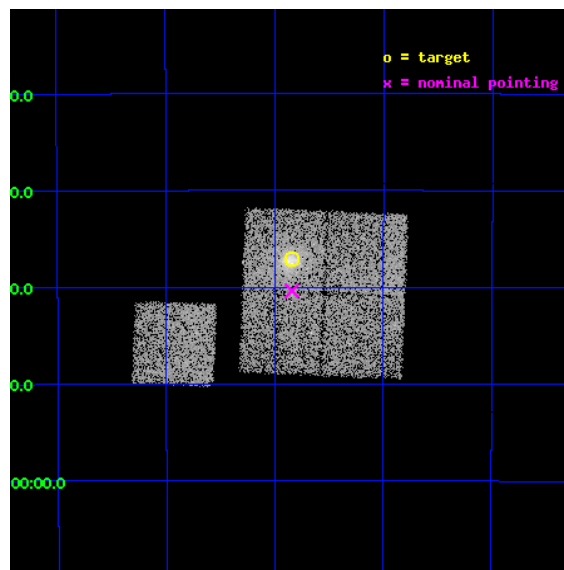
L2 Processing Date : Feb 27 2012

Contents

1	Front	2
2	OBI	3
2.1	OBI	3
2.1.1	Images	3
2.1.2	Bias	3
2.1.3	Parameters	4
2.1.4	Events	4
2.2	Compared Parameters	5
2.3	Aspect	6
2.4	Star Slots	9
2.4.1	Slot 3	9
2.4.2	Slot 4	10
2.4.3	Slot 5	11
2.4.4	Slot 6	12
2.4.5	Slot 7	13
2.5	FID Slots	14
2.5.1	Slot 0	14
2.5.2	Slot 1	15
2.5.3	Slot 2	16
A	Summary	17
A.1	Status	17
A.2	Comments	17

1 Front

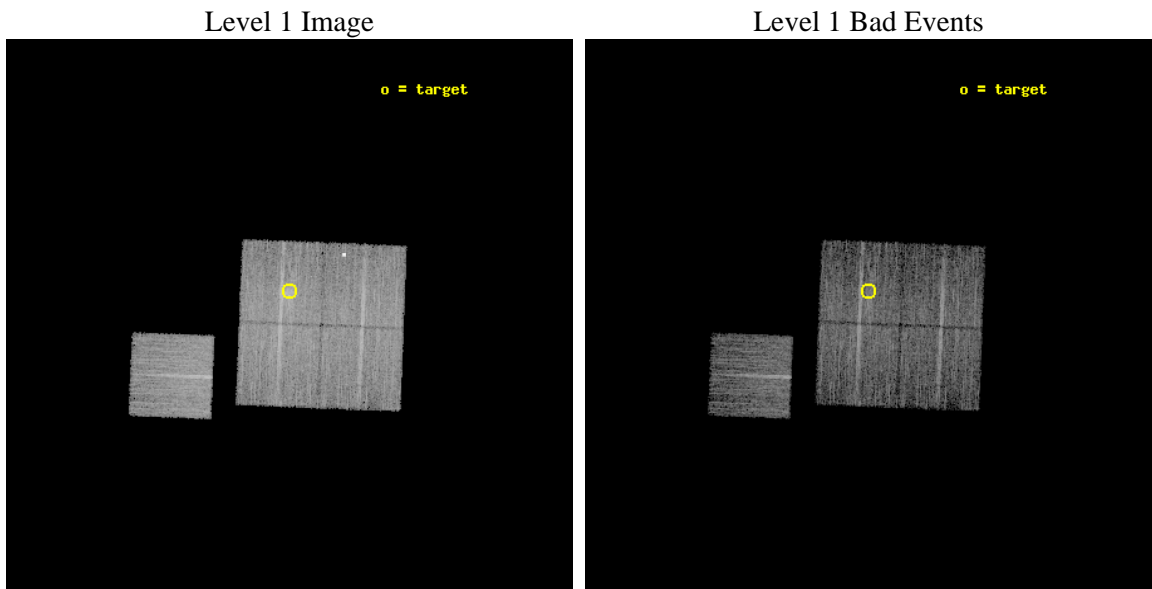
seq_num	801150	Sequence number
obs_id	13517	Observation id
title	Completing X-ray Observations of the 20 Most Massive Clusters from the South Pole Telescope 2500 Square-Degree Survey	Proposal title
observer	Prof. Gordon Garmire	Principal investigator
object	SPT-CLJ2031-4037	Source name
dtcycle	0	
cycle	P	events from which exps? Prim/Second/Both
ra_targ	307.96	Observer's specified target RA [deg]
dec_targ	-40.618806	Observer's specified target Dec [deg]
ra_nom	307.96038257768	Nominal RA [deg]
dec_nom	-40.673217453644	Nominal Dec [deg]
roll_nom	272.3054993174	Nominal Roll [deg]
revision	2	Processing version of data
ontime	10055.811805904	Sum of GTIs [s]
livetime	9924.4252216788	Livetime [s]
ontime0	10052.547665715	Sum of GTIs [s]
ontime1	10058.870716214	Sum of GTIs [s]
ontime2	10055.77076596	Sum of GTIs [s]
ontime3	10055.811805904	Sum of GTIs [s]
ontime6	10058.788636208	Sum of GTIs [s]
l2events	34317	Number of level 2 events



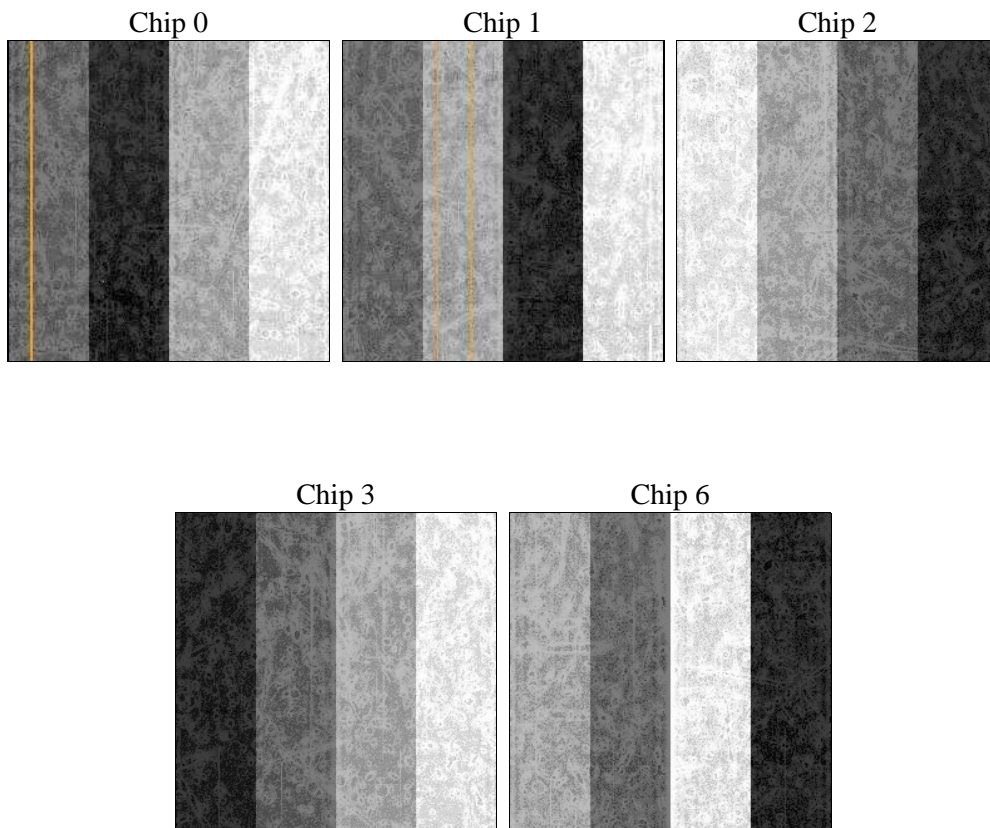
2 OBI

2.1 OBI

2.1.1 Images



2.1.2 Bias



2.1.3 Parameters

obi_num	1	Obi number	sched_exp_time	10000.000000	[s] Scheduled observation exposure time
ascdsver	8.4.3	Processing system revision	ontime	10055.811805904	Sum of GTIs [s]
caldbver	4.4.8	 	ontime0	10052.547665715	Sum of GTIs [s]
date	2012-02-27T11:59:08	Date and time of file creation	ontime1	10058.870716214	Sum of GTIs [s]
revision	2	Processing version of data	ontime2	10055.77076596	Sum of GTIs [s]
			ontime3	10055.811805904	Sum of GTIs [s]
			ontime6	10058.788636208	Sum of GTIs [s]
			l1events	303500	Number of level 1 events

2.1.4 Events

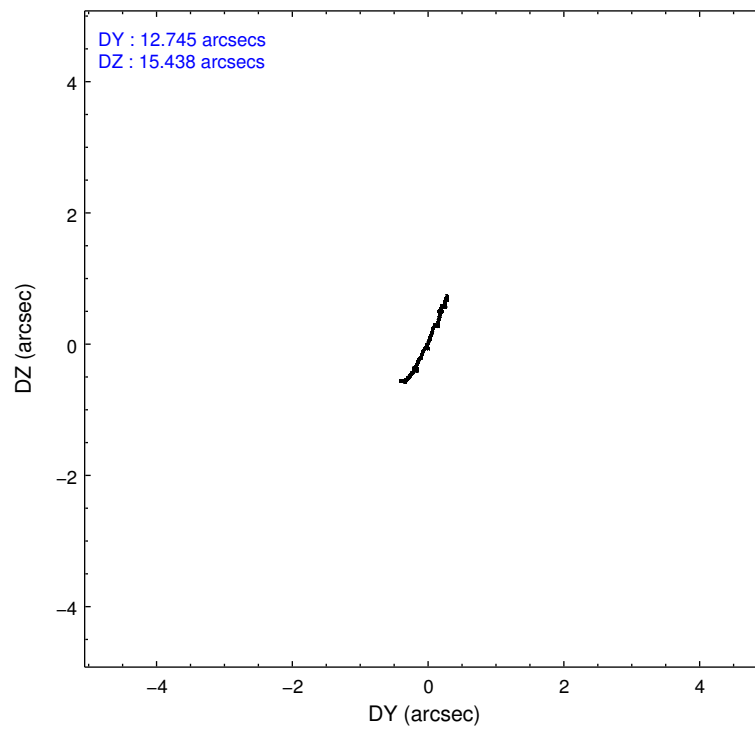
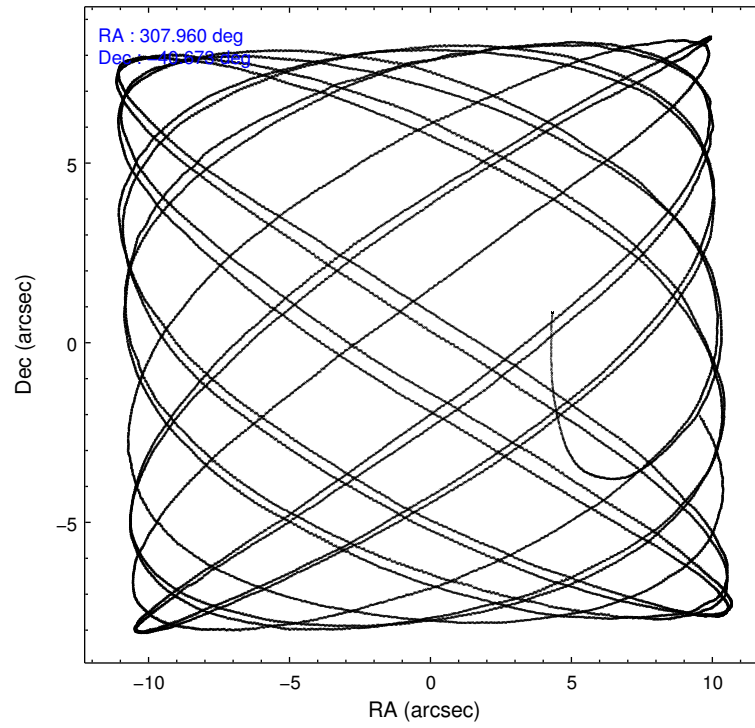
	ccd 0	ccd 1	ccd 2	ccd 3	ccd 6
level 1 events	55463	59866	61760	63504	62907
rejected events	48316	48804	54609	52894	55470
rejected %	87%	81%	88%	83%	88%

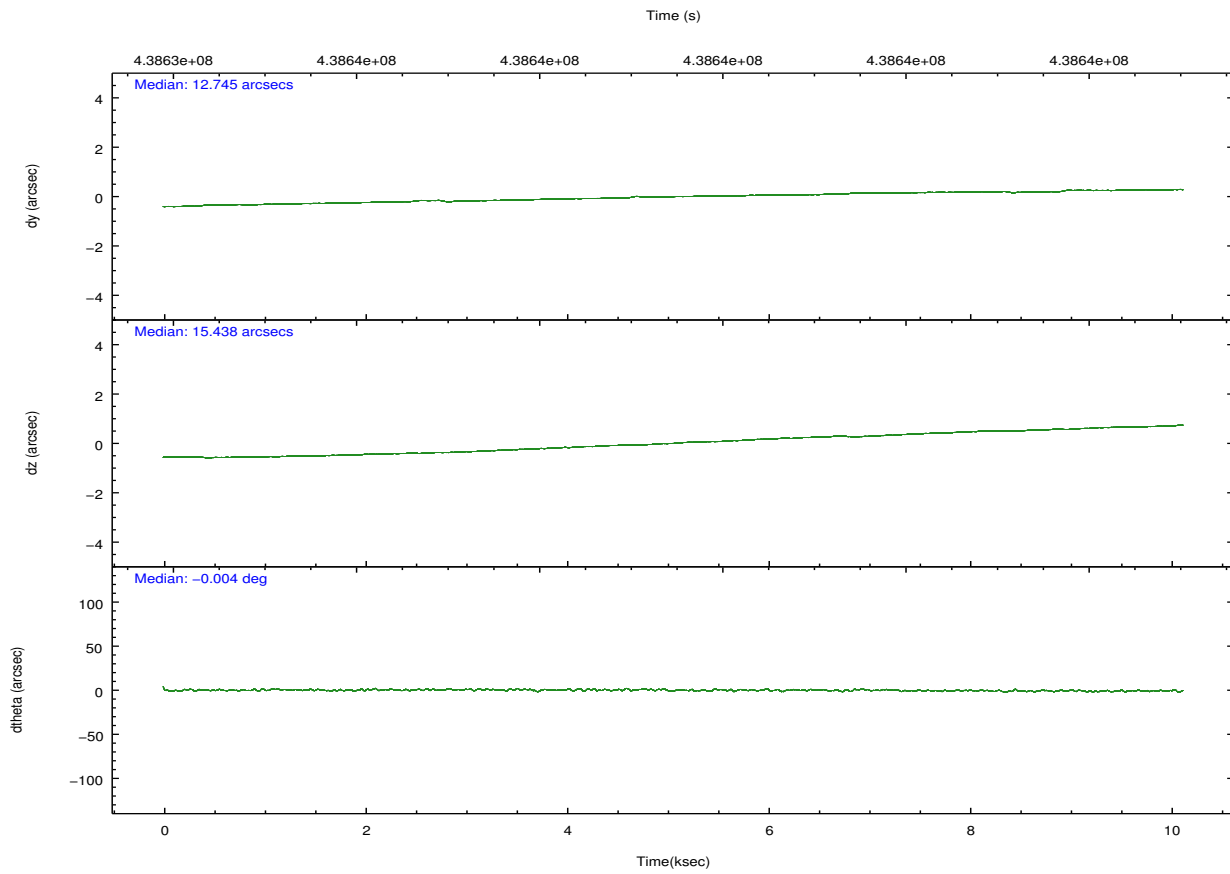
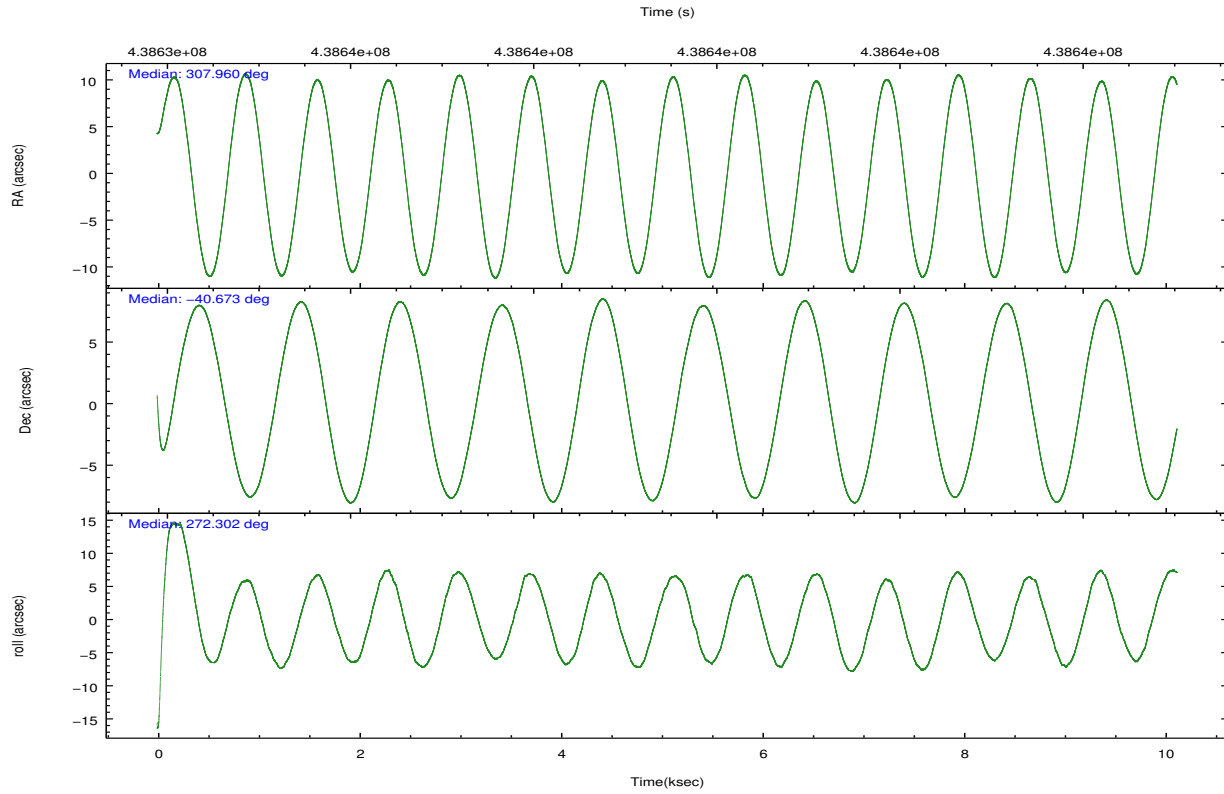
	ccd 0	ccd 1	ccd 2	ccd 3	ccd 6
grade 0 events	2444	5902	2593	5577	2626
	4%	9%	4%	8%	4%
grade 1 events	28	46	40	61	31
	0%	0%	0%	0%	0%
grade 2 events	1811	1915	1757	1833	1716
	3%	3%	2%	2%	2%
grade 3 events	728	820	739	839	719
	1%	1%	1%	1%	1%
grade 4 events	739	766	722	859	737
	1%	1%	1%	1%	1%
grade 5 events	2757	2987	2631	2962	2936
	4%	4%	4%	4%	4%
grade 6 events	1427	1663	1343	1507	1641
	2%	2%	2%	2%	2%
grade 7 events	45529	45767	51935	49866	52501
	82%	76%	84%	78%	83%

2.2 Compared Parameters

Parameter	Planned	Actual	Parameter	Planned	Actual
Instrument	ACIS	ACIS	Obspar format version number	7	7
Detector	ACIS-01236	ACIS-01236	Obspar file type	PREDICTED	ACTUAL
Grating	NONE	NONE	Obspar update status	NONE	UPDATED
Data mode	VFAINT	VFAINT	CCD I0 on	Y	Y
Observation mode	POINTING	POINTING	CCD I1 on	Y	Y
[deg] Pointing RA	307.940852	307.9603825776761	CCD I2 on	Y	Y
[deg] Pointing Dec	-40.650026	-40.6732174536441	CCD I3 on	Y	Y
[deg] Pointing Roll	272.084126	272.3054993174027	CCD S0 on	N	N
[mm] SIM focus pos	-0.782348	-0.7809083437167272	CCD S1 on	N	N
[mm] SIM defocus	0	0.001439871863259334	CCD S2 on	O1	Y
[mm] SIM translation stage pos	-225.840463	-225.8433433320239	CCD S3 on	N	N
[mm] SIM translation stage offset	-7.752	-7.749109670905796	CCD S4 on	N	N
[s] Observation start time (MET)	438634506.184000	438633314.45567	CCD S5 on	N	N
Observation start date	2011-11-25T18:54:00	2011-11-25T18:35:14	Number of optional ACIS chips dropped	0	0
[s] Observation end time (MET)	438644506.184000	438645934.25634	On-chip summing requested	N	N
Observation end date	2011-11-25T21:40:40	2011-11-25T22:05:34	Subarray requested	NONE	NONE
Read mode	TIMED	TIMED	Alternating exposures requested	N	N
			[s] Primary exposure time	0.000000	3.1

2.3 Aspect



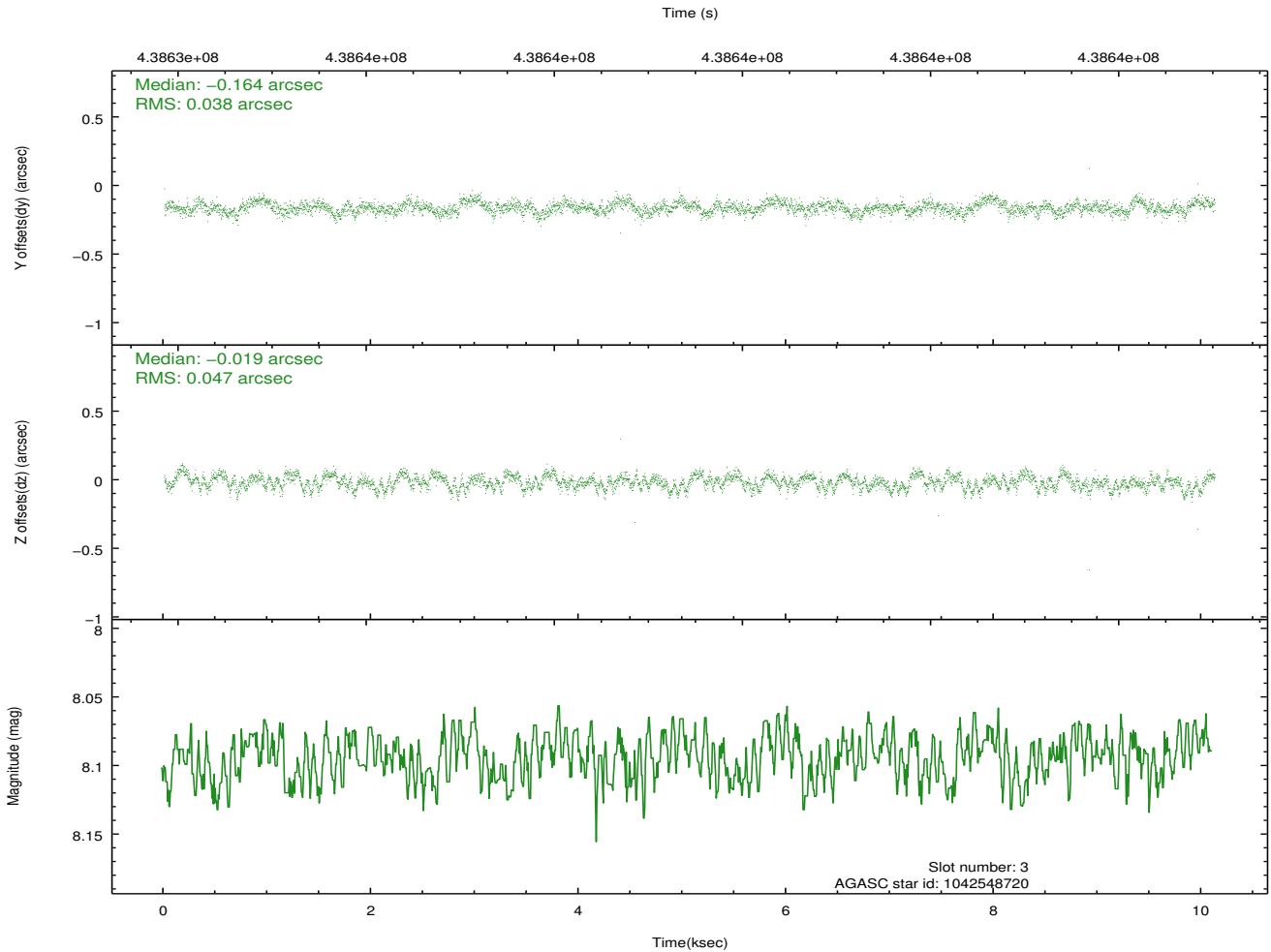
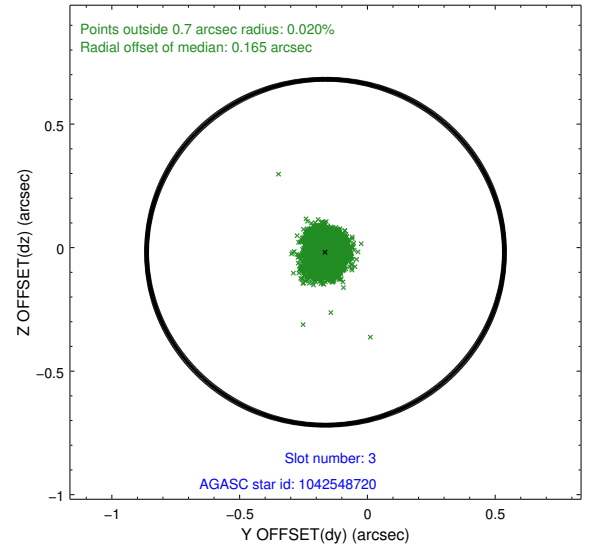
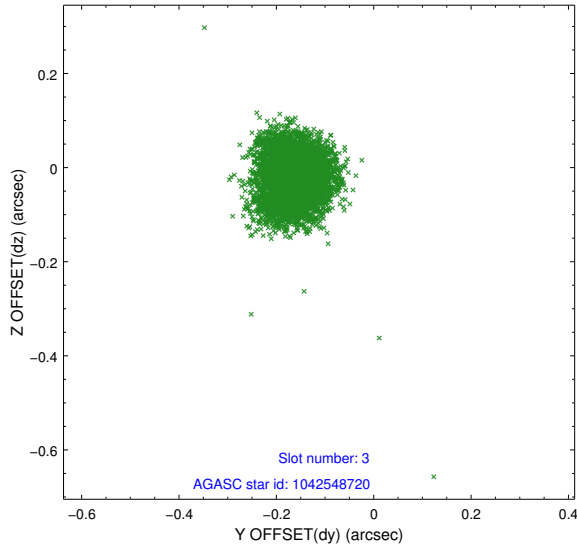


Slot Statistics

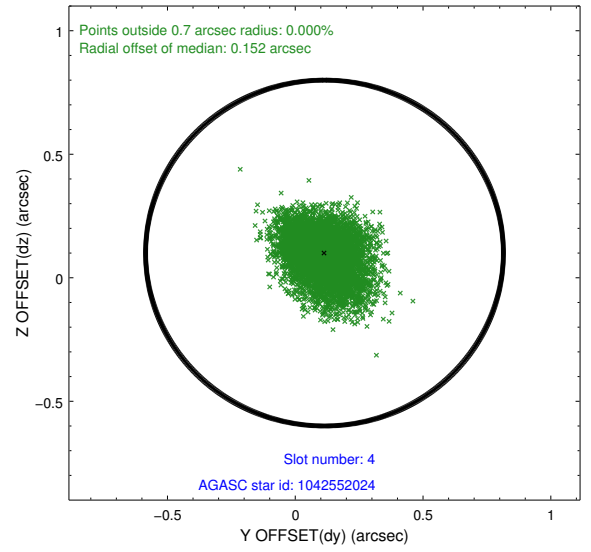
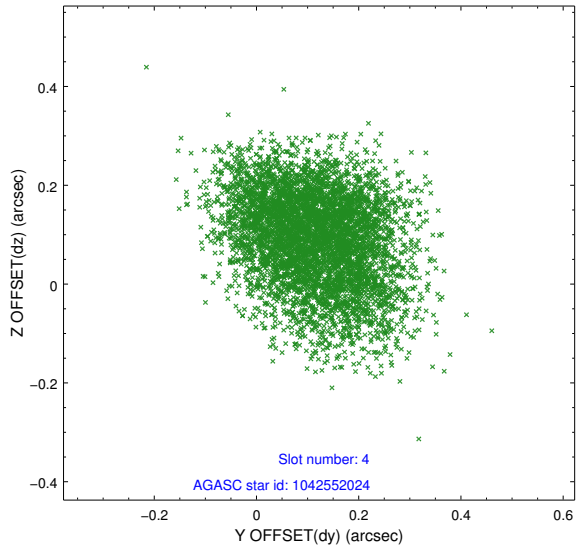
slot	status	id	mag	n_pts	med_dy	med_dz	dr1	dr2	ra	dec	mean_y	mean_z
0	FID	ACIS-I-1	7.04	2469	-0.038	-0.103	0.022	0.033	0.000000	0.000000	926.66	-998.21
1	FID	ACIS-I-4	6.94	2468	-0.031	0.071	0.016	0.025	0.000000	0.000000	2146.49	902.45
2	FID	ACIS-I-6	7.05	2469	-0.026	0.095	0.012	0.018	0.000000	0.000000	393.16	1544.22
3	GUIDE	1042548720	8.09	4937	-0.164	-0.019	0.064	0.101	308.412103	-40.726036	323.72	1274.76
4	GUIDE	1042552024	9.71	4905	0.114	0.100	0.138	0.220	308.263119	-40.138158	-1807.31	953.49
5	GUIDE	1042554112	9.43	4934	-0.074	0.069	0.096	0.158	308.177008	-40.250080	-1414.13	701.78
6	GUIDE	1042551744	9.44	4936	-0.127	0.061	0.133	0.213	308.737006	-40.713801	318.41	2162.48
7	GUIDE	1043073496	8.43	4937	0.259	-0.202	0.110	0.182	307.529466	-41.336959	2434.14	-1201.06

2.4 Star Slots

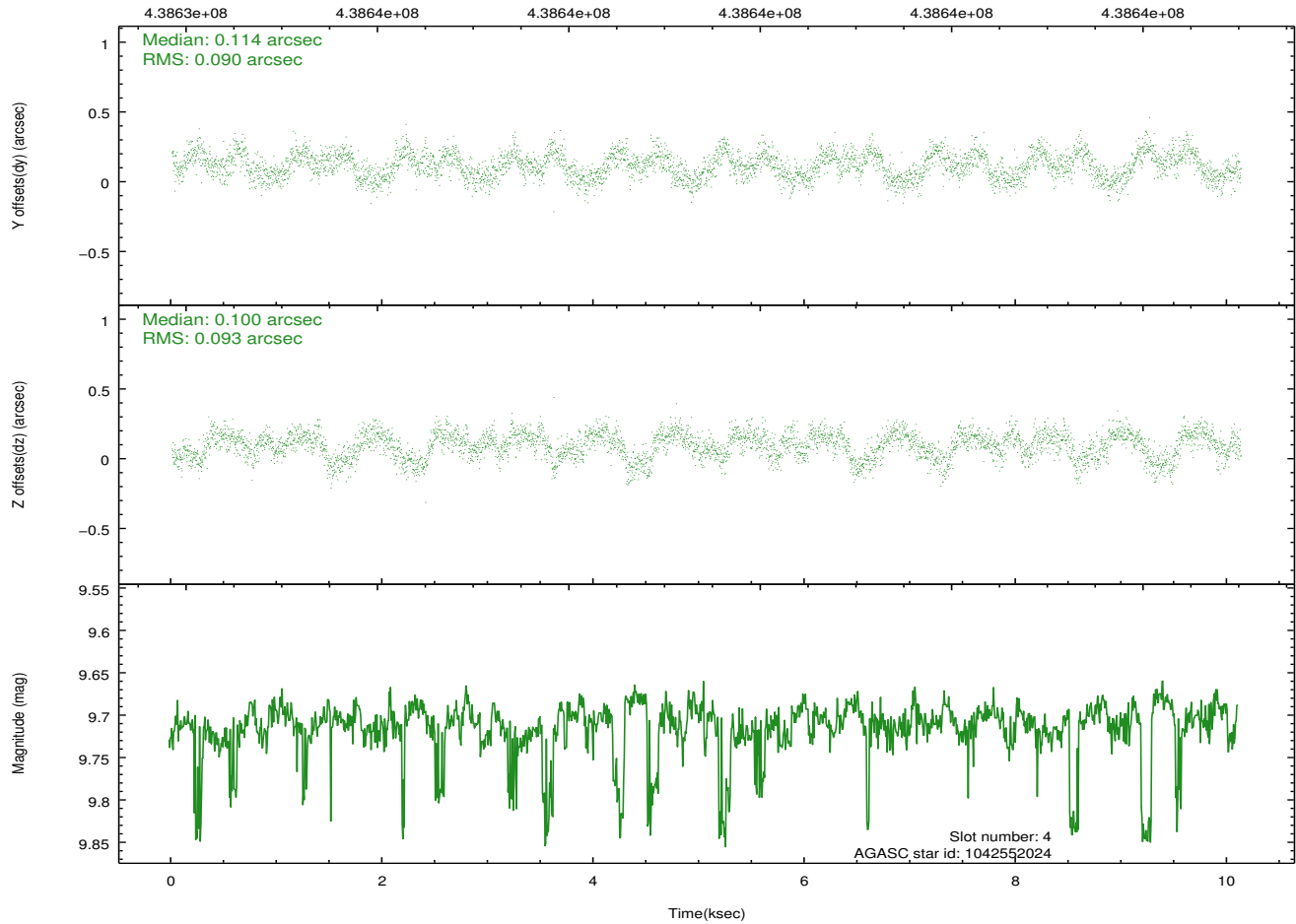
2.4.1 Slot 3



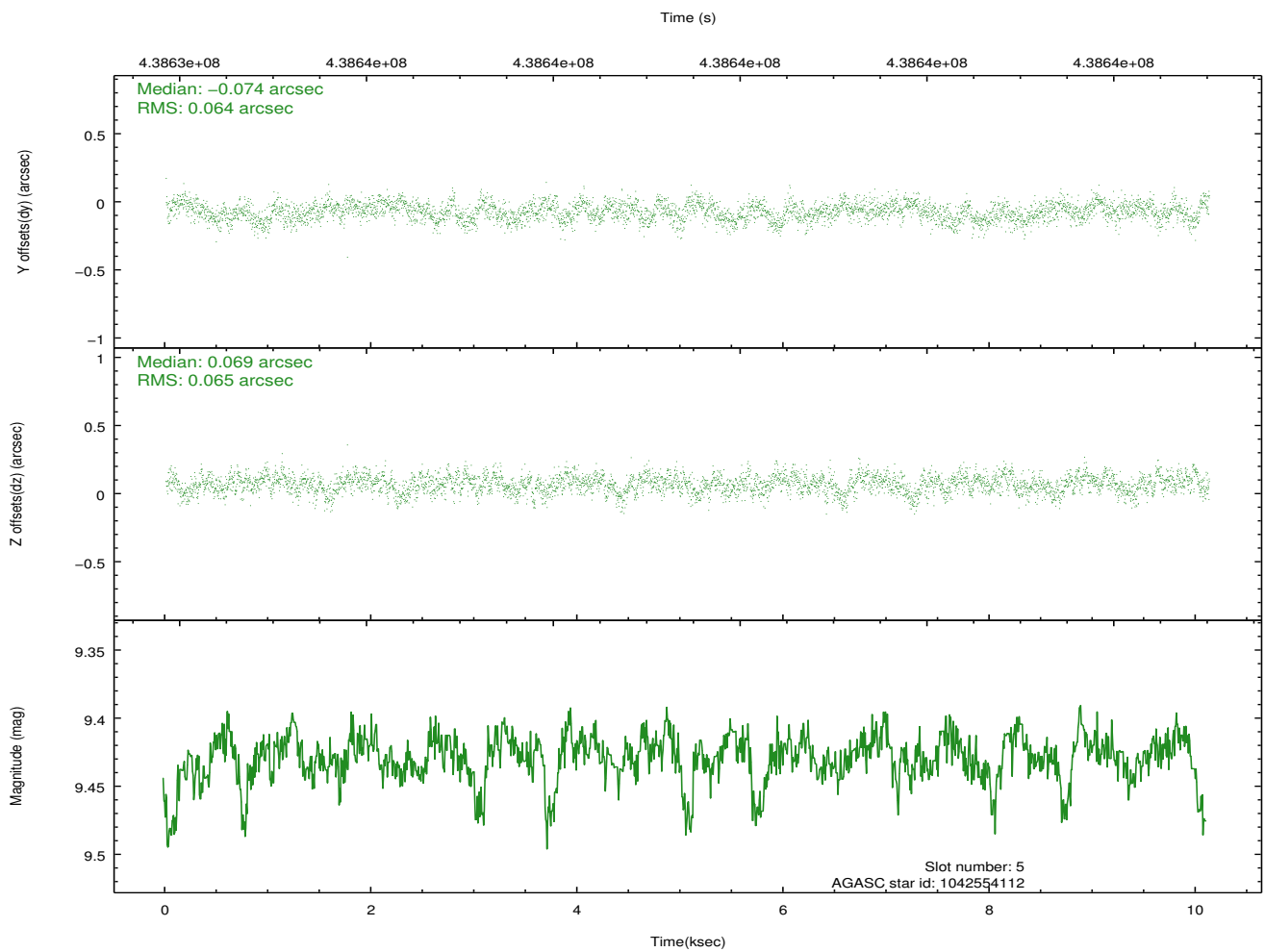
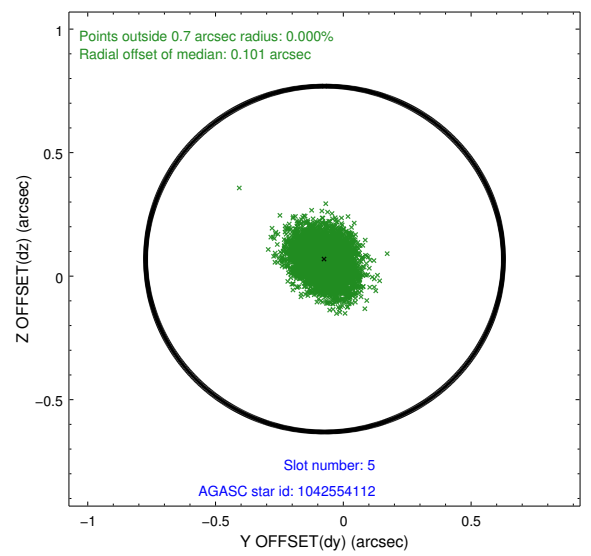
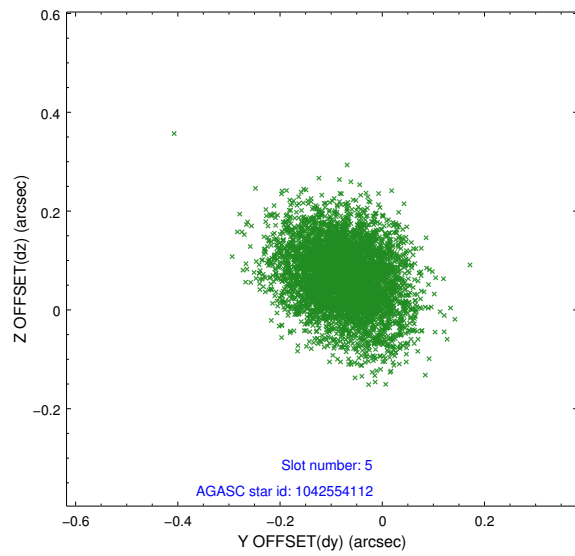
2.4.2 Slot 4



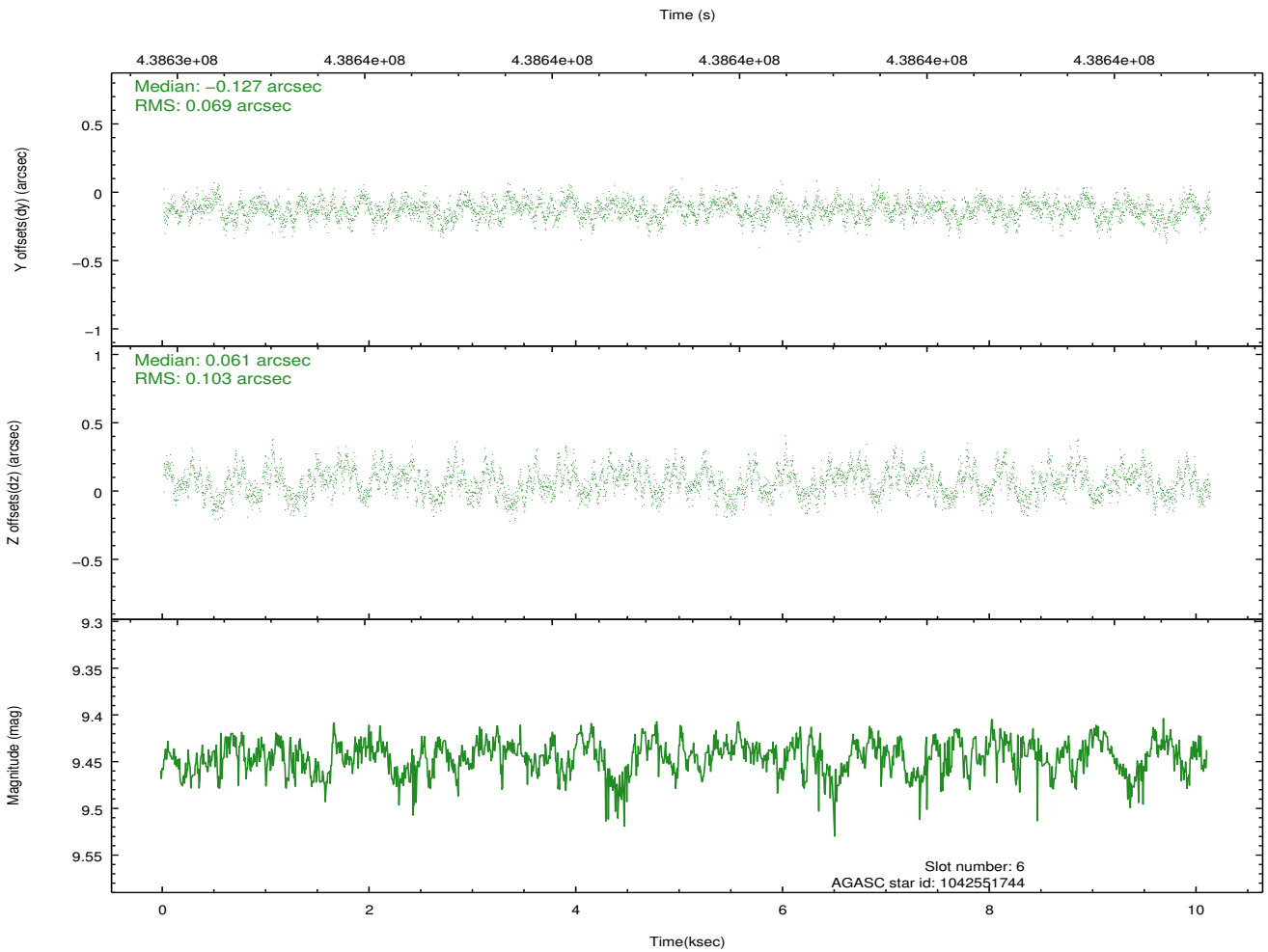
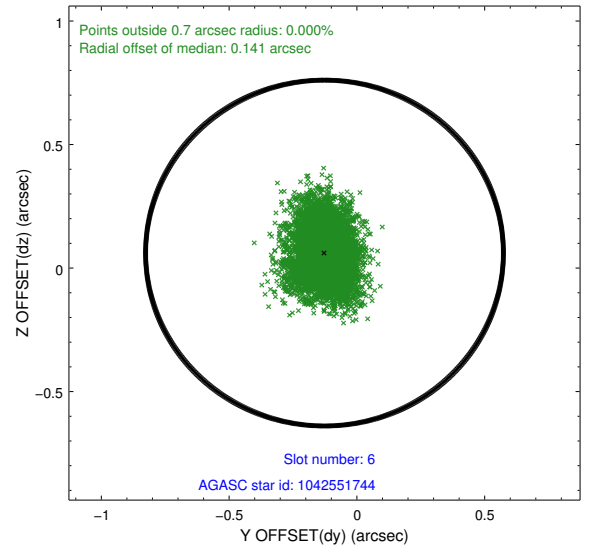
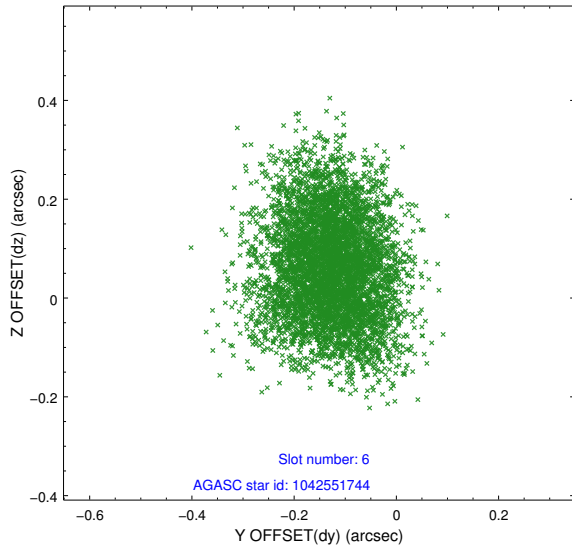
Time (s)



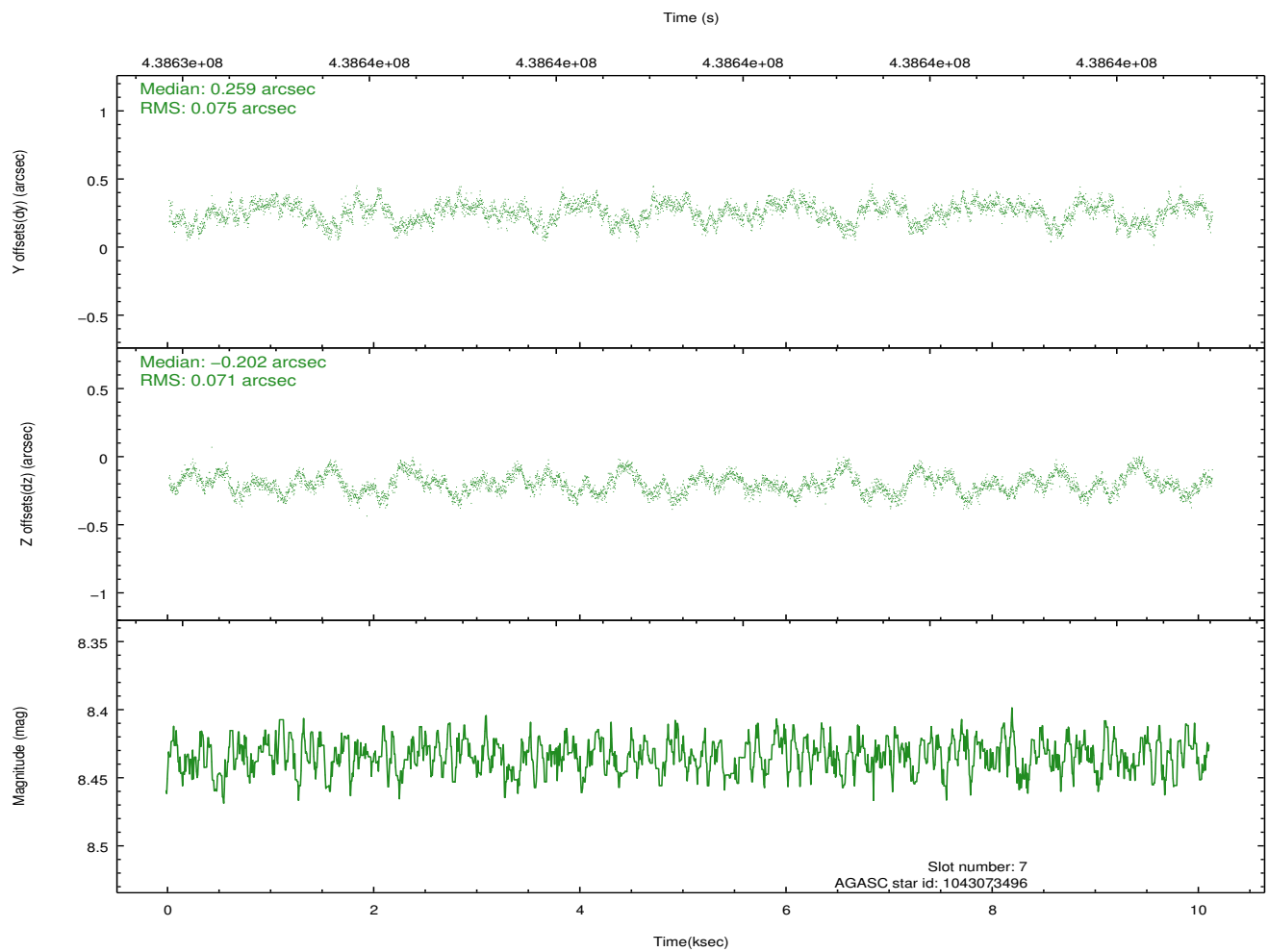
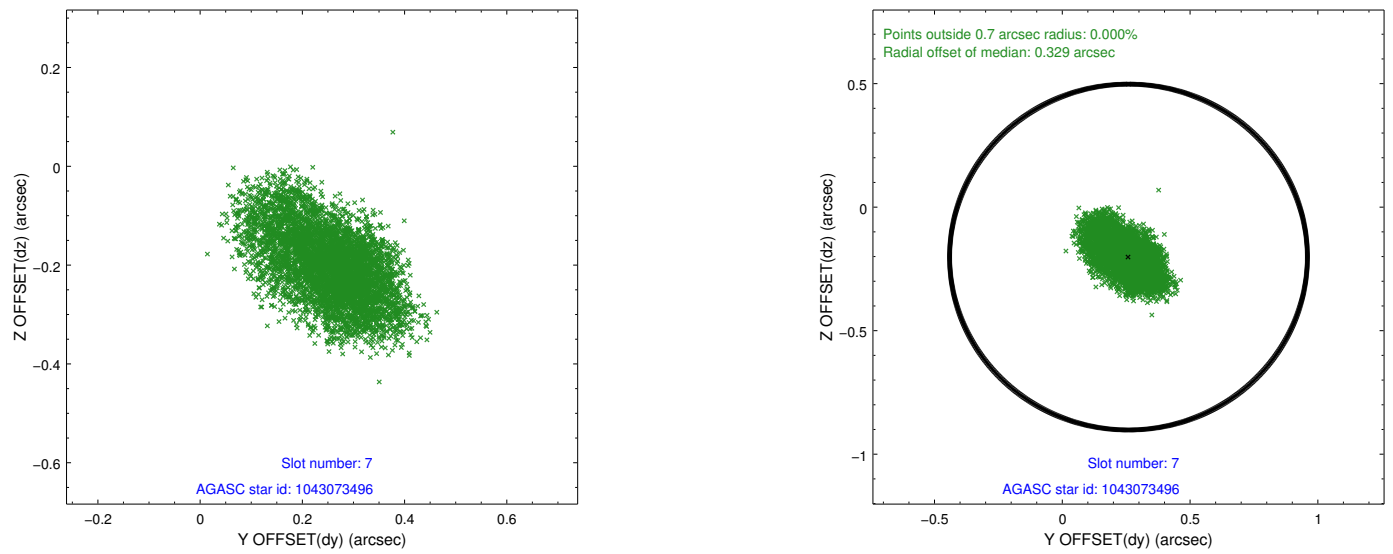
2.4.3 Slot 5



2.4.4 Slot 6

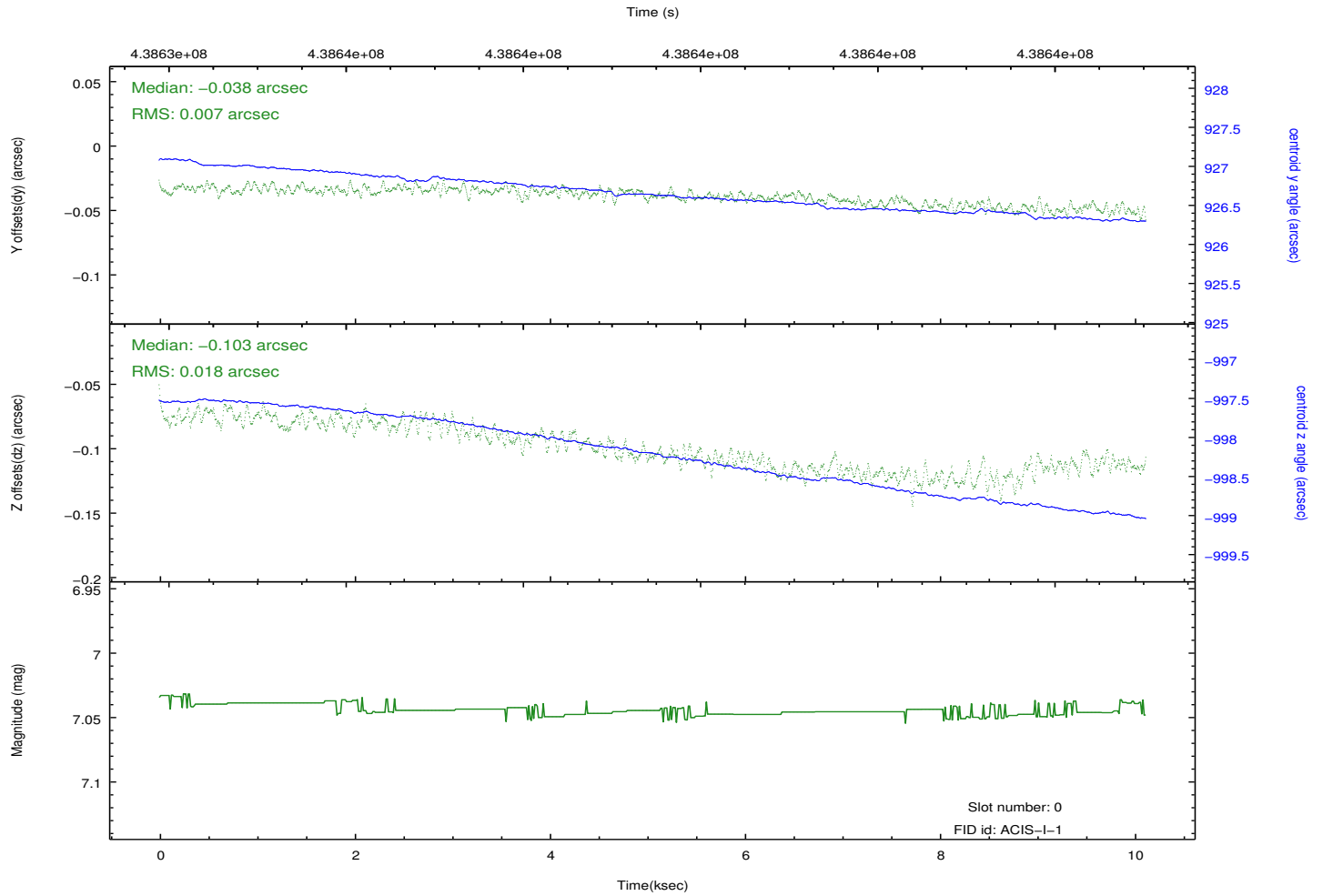
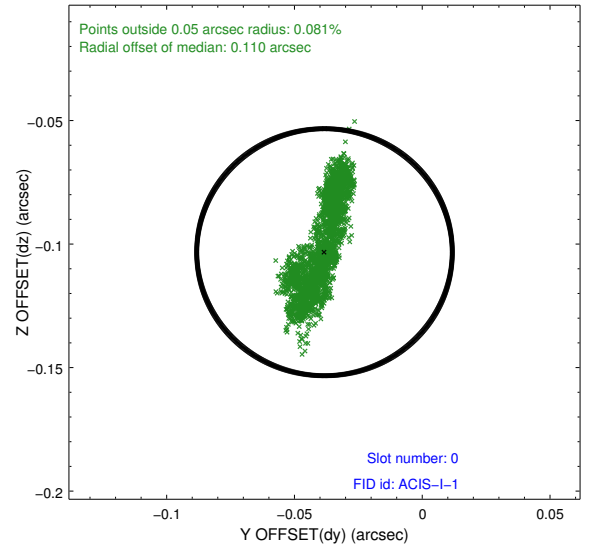
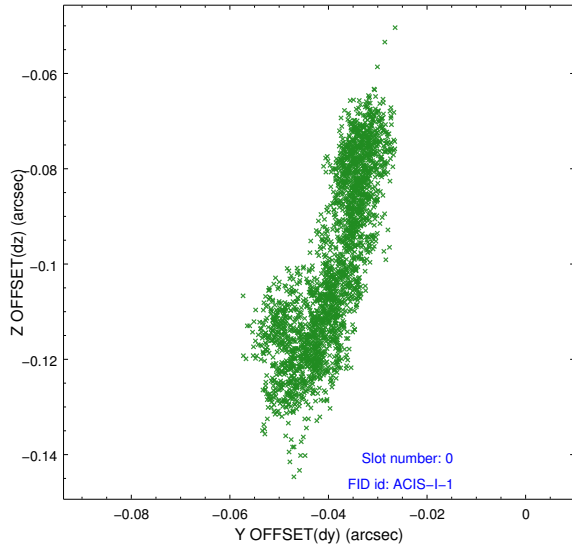


2.4.5 Slot 7

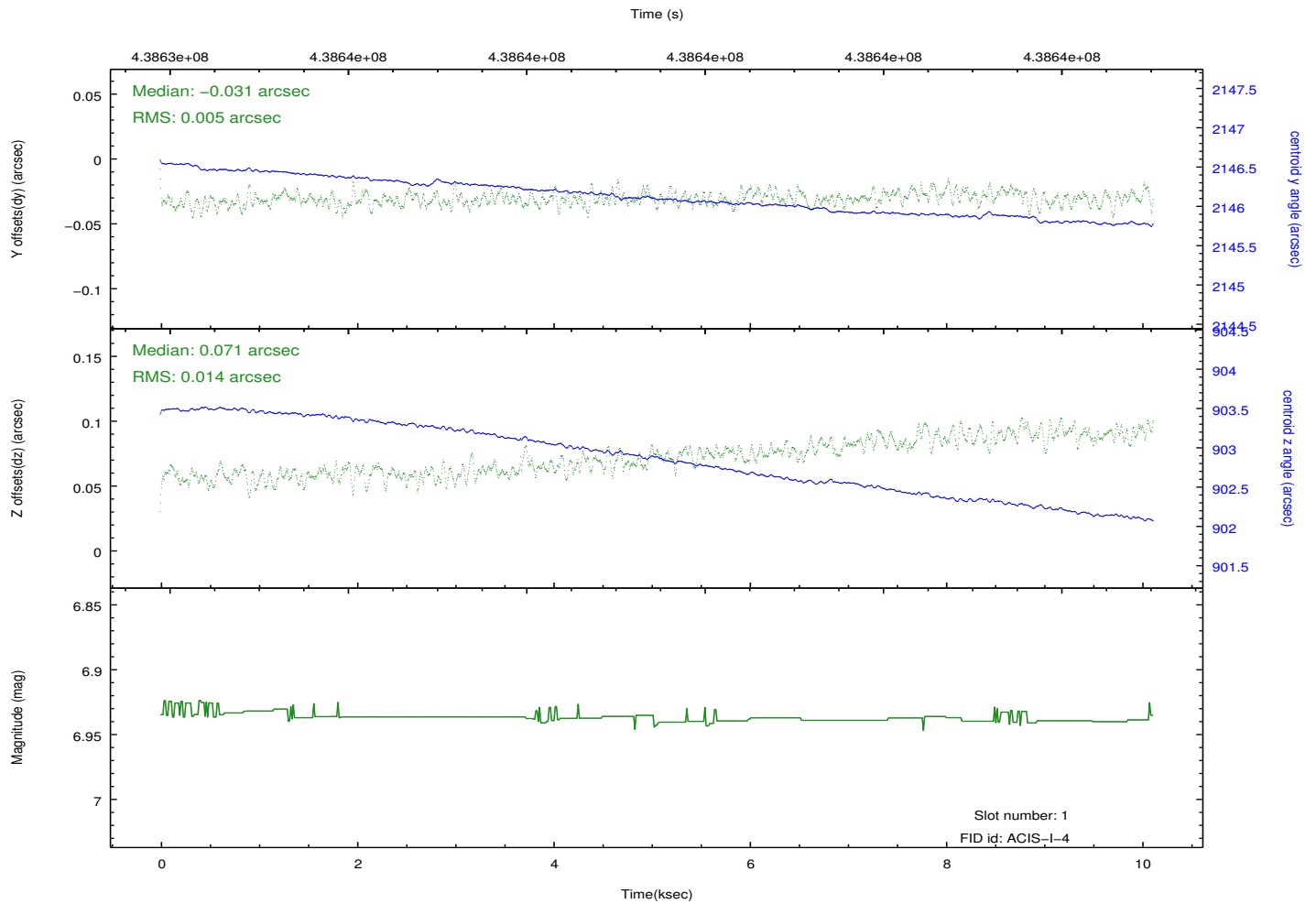
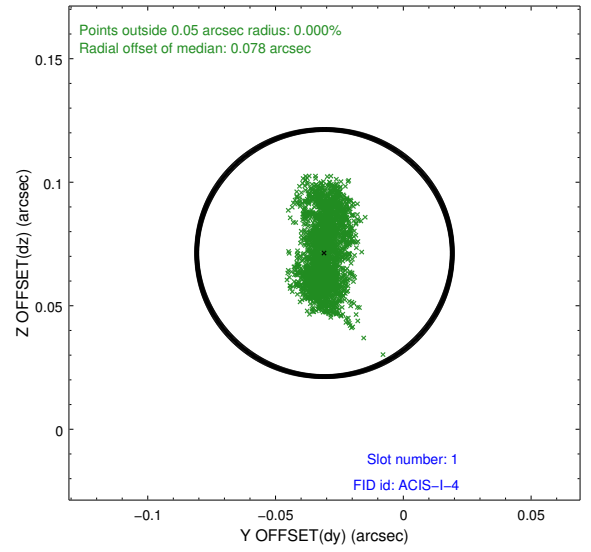
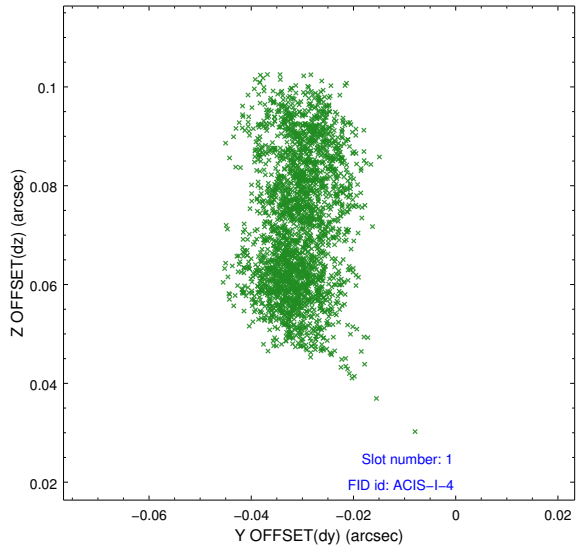


2.5 FID Slots

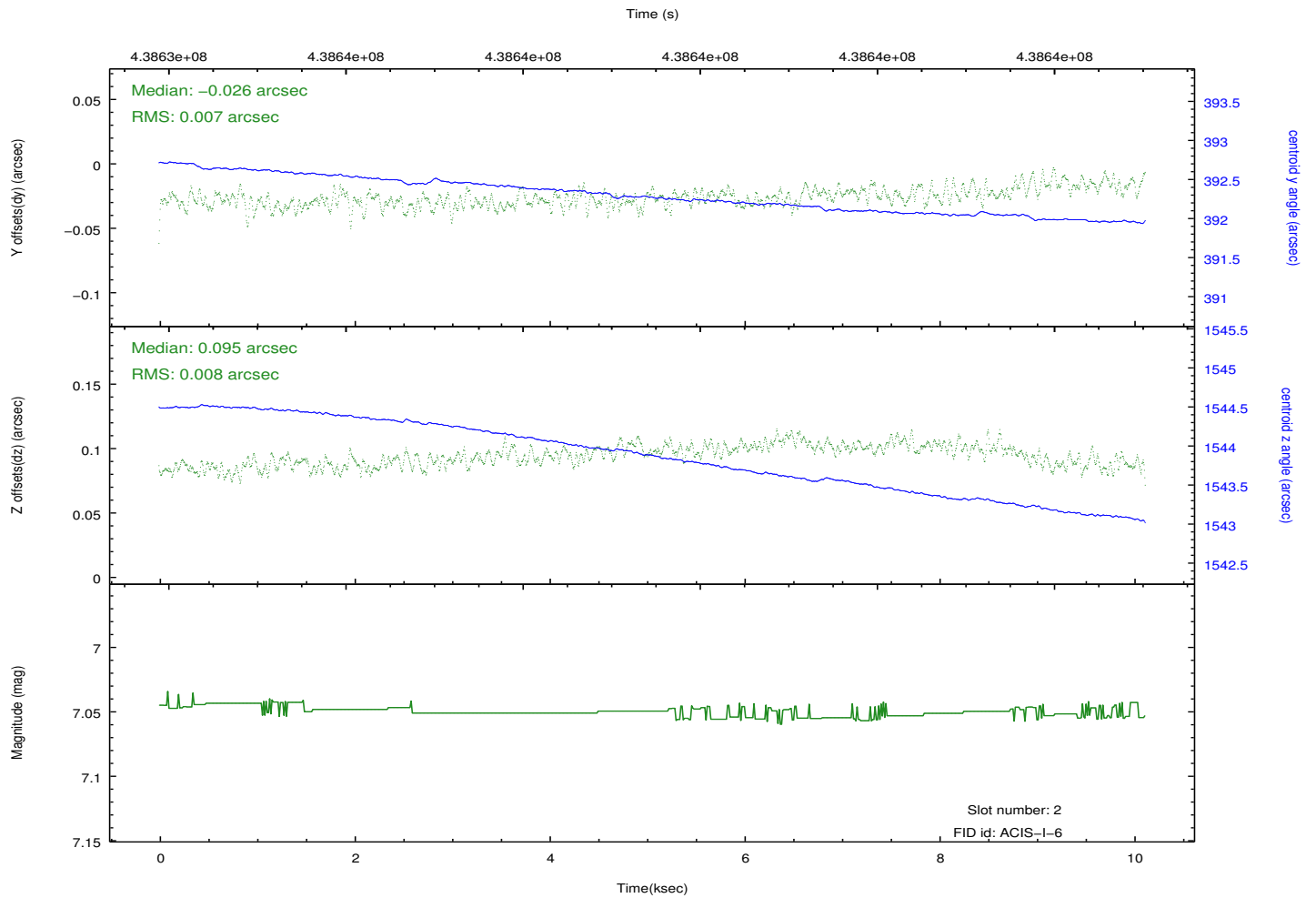
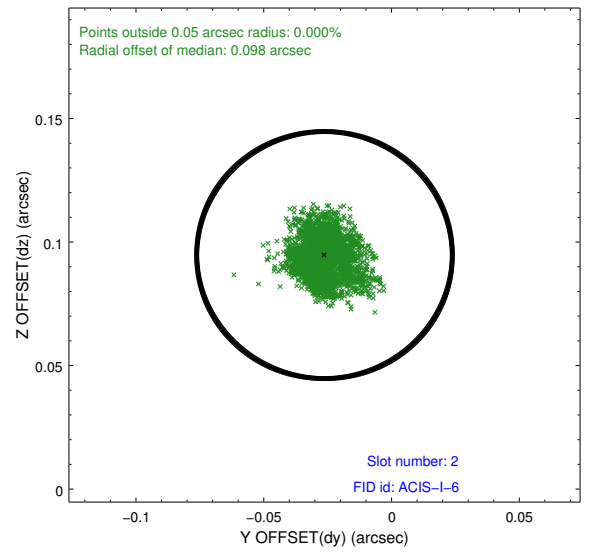
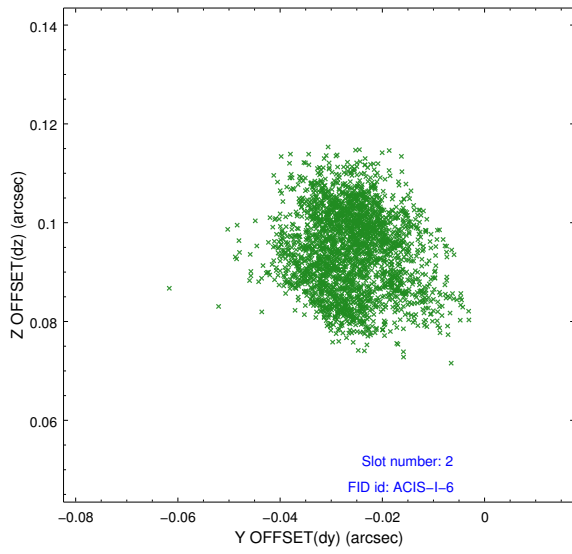
2.5.1 Slot 0



2.5.2 Slot 1



2.5.3 Slot 2



A Summary

A.1 Status

V&V Scientist	Beth Sundheim
V&V Date (YYYY-MM-DD)	2012.02.27
V&V Edition	1
V&V Disposition and Status	OK
V&V Charge Time	10.055811803877

A.2 Comments