

# V&V Reference Report

## L2 ASCDS Version : 8.4.5

Observation 13607 - L2 Version 1  
Chandra X-Ray Center

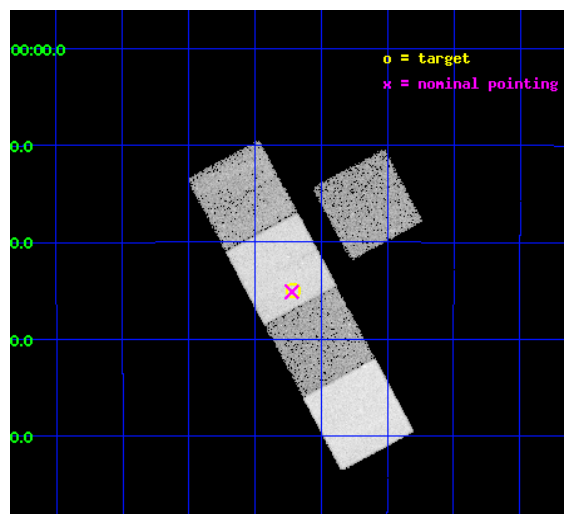
L2 Processing Date : Jul 10 2012

## Contents

<b>1</b>	<b>Front</b>	<b>2</b>
<b>2</b>	<b>OBI</b>	<b>3</b>
2.1	OBI . . . . .	3
2.1.1	Images . . . . .	3
2.1.2	Bias . . . . .	3
2.1.3	Parameters . . . . .	4
2.1.4	Events . . . . .	4
2.2	Compared Parameters . . . . .	5
2.3	Aspect . . . . .	6
2.4	Star Slots . . . . .	9
2.4.1	Slot 3 . . . . .	9
2.4.2	Slot 4 . . . . .	10
2.4.3	Slot 5 . . . . .	11
2.4.4	Slot 6 . . . . .	12
2.4.5	Slot 7 . . . . .	13
2.5	FID Slots . . . . .	14
2.5.1	Slot 0 . . . . .	14
2.5.2	Slot 1 . . . . .	15
2.5.3	Slot 2 . . . . .	16
<b>A</b>	<b>Summary</b>	<b>17</b>
A.1	Status . . . . .	17
A.2	Comments . . . . .	17

# 1 Front

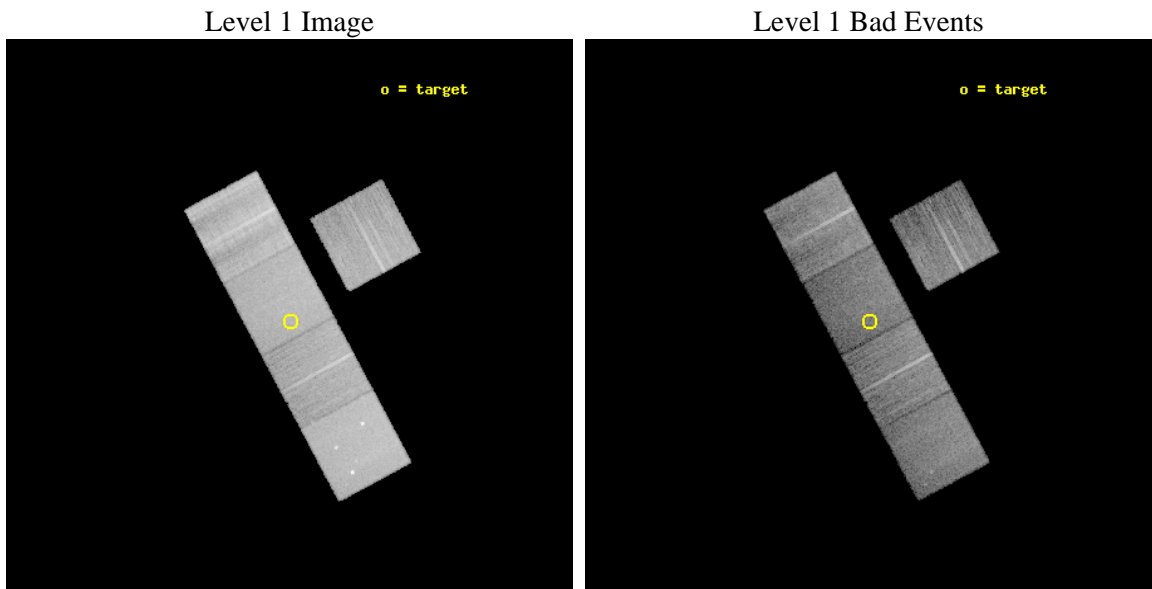
seq_num	200762	Sequence number
obs_id	13607	Observation id
title	Are Convective Dynamos Super-Saturated at High Rotation Velocities?	&#160
observer	Prof. Edo Berger	Principal investigator
object	LP851-346	Source name
dtcycle	0	&#160
cycle	P	events from which exps? Prim/Second/Both
ra_targ	178.92875	Observer's specified target RA [deg]
dec_targ	-22.416278	Observer's specified target Dec [deg]
ra_nom	178.93032540011	Nominal RA [deg]
dec_nom	-22.418928765768	Nominal Dec [deg]
roll_nom	241.72136401017	Nominal Roll [deg]
revision	1	Processing version of data
ontime	20062.498597682	Sum of GTIs [s]
livetime	19800.367283706	Livetime [s]
ontime3	20059.234507263	Sum of GTIs [s]
ontime5	20062.457557678	Sum of GTIs [s]
ontime6	20062.416517675	Sum of GTIs [s]
ontime7	20062.498597682	Sum of GTIs [s]
ontime8	20059.193586767	Sum of GTIs [s]
l2events	195367	Number of level 2 events



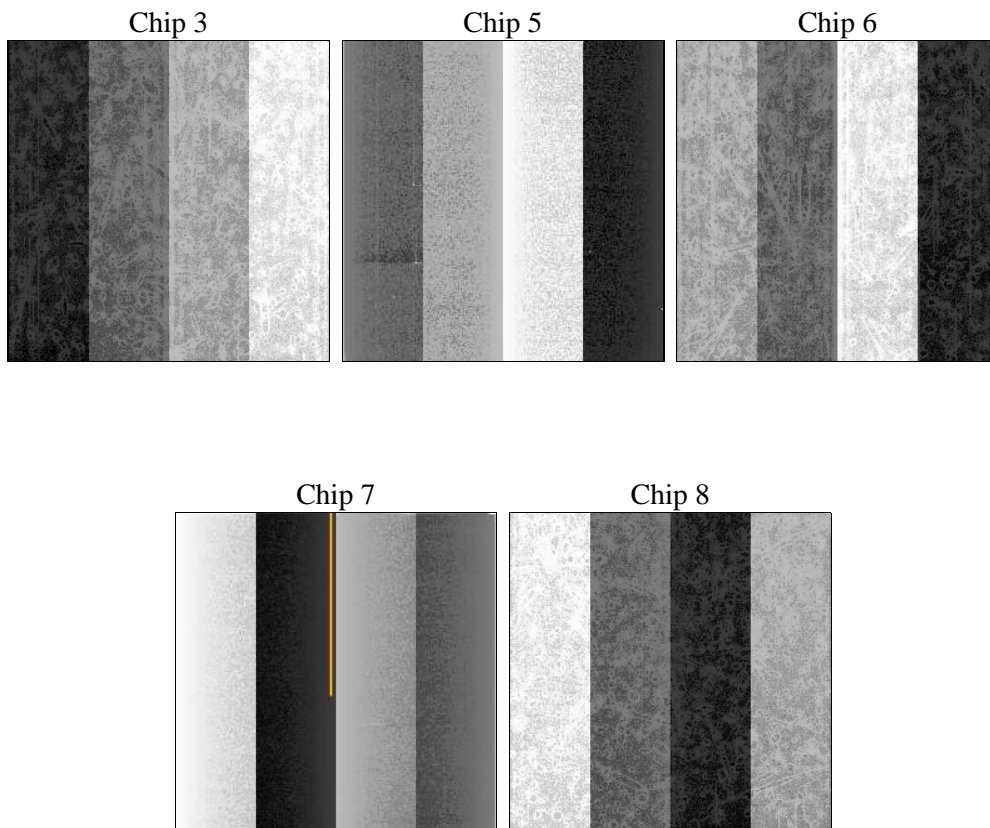
## 2 OBI

### 2.1 OBI

#### 2.1.1 Images



#### 2.1.2 Bias



### 2.1.3 Parameters

obi_num	0	Obi number	sched_exp_time	20000.000000	[s] Scheduled observation exposure time
ascdsver	8.4.5	Processing system revision	ontime	20062.498597682	Sum of GTIs [s]
caldbver	4.5.0	&#160	ontime3	20059.234507263	Sum of GTIs [s]
date	2012-07-10T07:29:09	Date and time of file creation	ontime5	20062.457557678	Sum of GTIs [s]
revision	1	Processing version of data	ontime6	20062.416517675	Sum of GTIs [s]
			ontime7	20062.498597682	Sum of GTIs [s]
			ontime8	20059.193586767	Sum of GTIs [s]
			l1events	754905	Number of level 1 events

### 2.1.4 Events

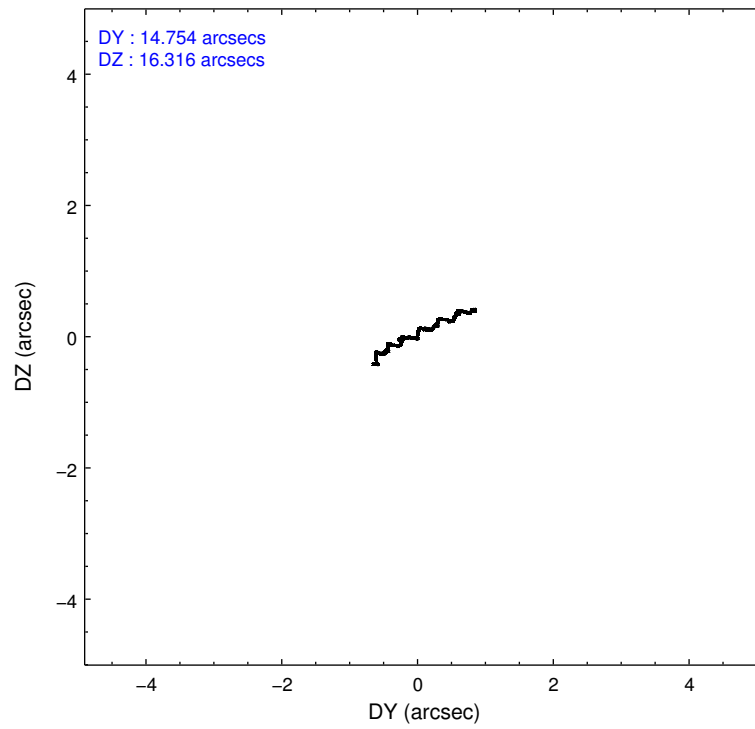
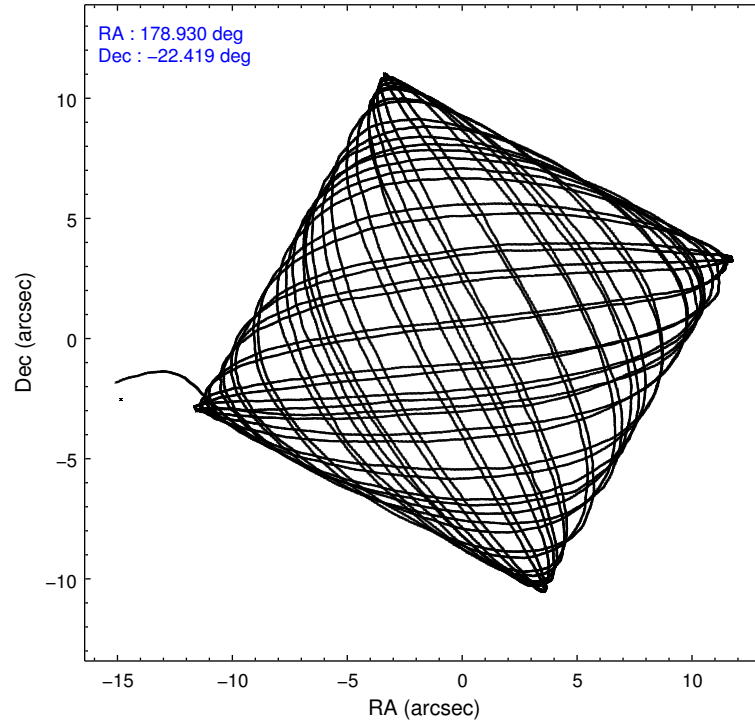
	ccd 3	ccd 5	ccd 6	ccd 7	ccd 8
level 1 events	114838	187530	120404	150672	181461
rejected events	101952	93452	105485	81536	118387
rejected %	88%	49%	87%	54%	65%

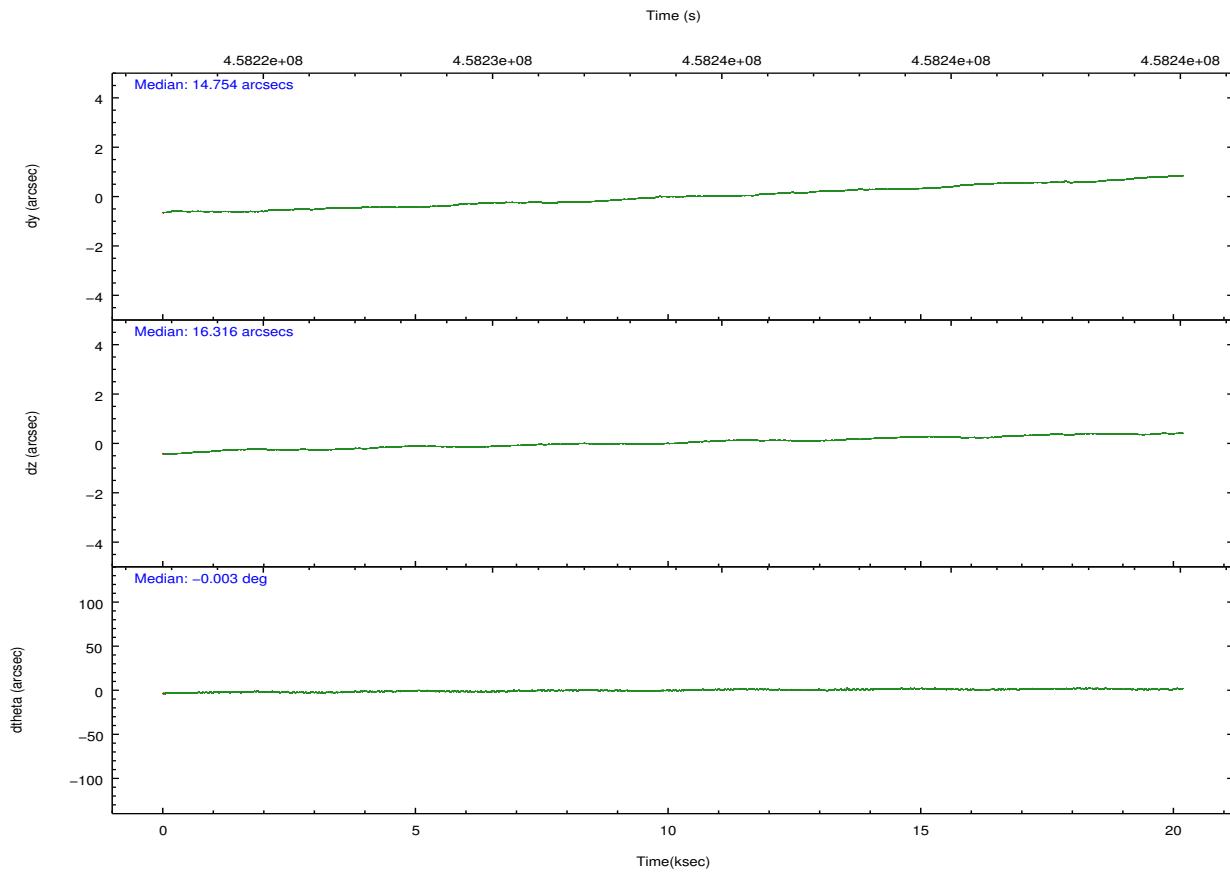
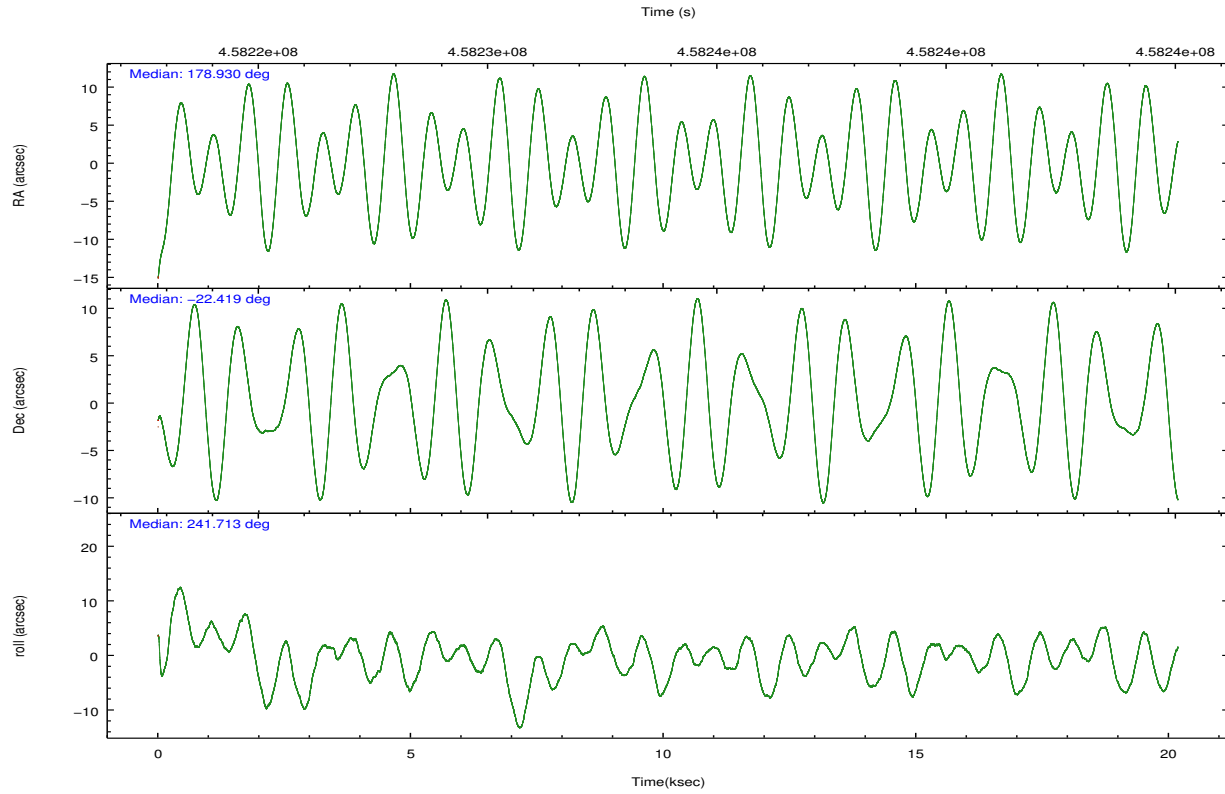
	ccd 3	ccd 5	ccd 6	ccd 7	ccd 8
grade 0 events	4661	10443	5584	6546	20622
	4%	5%	4%	4%	11%
grade 1 events	74	461	64	217	186
	0%	0%	0%	0%	0%
grade 2 events	2765	28524	3337	14586	12403
	2%	15%	2%	9%	6%
grade 3 events	1338	3624	1433	6074	8000
	1%	1%	1%	4%	4%
grade 4 events	1420	3510	1383	6026	7554
	1%	1%	1%	3%	4%
grade 5 events	5542	13896	5553	15305	8386
	4%	7%	4%	10%	4%
grade 6 events	2704	48007	3187	35920	14498
	2%	25%	2%	23%	7%
grade 7 events	96334	79065	99863	65998	109812
	83%	42%	82%	43%	60%

## 2.2 Compared Parameters

Parameter	Planned	Actual	Parameter	Planned	Actual
Instrument	ACIS	ACIS	Obspar format version number	7	7
Detector	ACIS-35678	ACIS-35678	Obspar file type	PREDICTED	ACTUAL
Grating	NONE	NONE	Obspar update status	NONE	UPDATED
Data mode	VFAINT	VFAINT	CCD I0 on	N	N
Observation mode	POINTING	POINTING	CCD I1 on	N	N
[deg] Pointing RA	178.929062	178.9303254001053	CCD I2 on	N	N
[deg] Pointing Dec	-22.391605	-22.4189287657683	CCD I3 on	O1	Y
[deg] Pointing Roll	241.564252	241.7213640101654	CCD S0 on	N	N
[mm] SIM focus pos	-0.684267	-0.6828225247311905	CCD S1 on	Y	Y
[mm] SIM defocus	0	0.001444936568705701	CCD S2 on	Y	Y
[mm] SIM translation stage pos	-190.132523	-190.1400660498719	CCD S3 on	Y	Y
[mm] SIM translation stage offset	0	0.00754346686406393	CCD S4 on	Y	Y
[s] Observation start time (MET)	458224030.184000	458223071.41558	CCD S5 on	N	N
Observation start date	2012-07-09T12:26:03	2012-07-09T12:11:11	Number of optional ACIS chips dropped	0	0
[s] Observation end time (MET)	458244030.184000	458244683.54173	On-chip summing requested	N	N
Observation end date	2012-07-09T17:59:23	2012-07-09T18:11:23	Subarray requested	NONE	NONE
Read mode	TIMED	TIMED	Alternating exposures requested	N	N
			[s] Primary exposure time	0.000000	3.1

## 2.3 Aspect



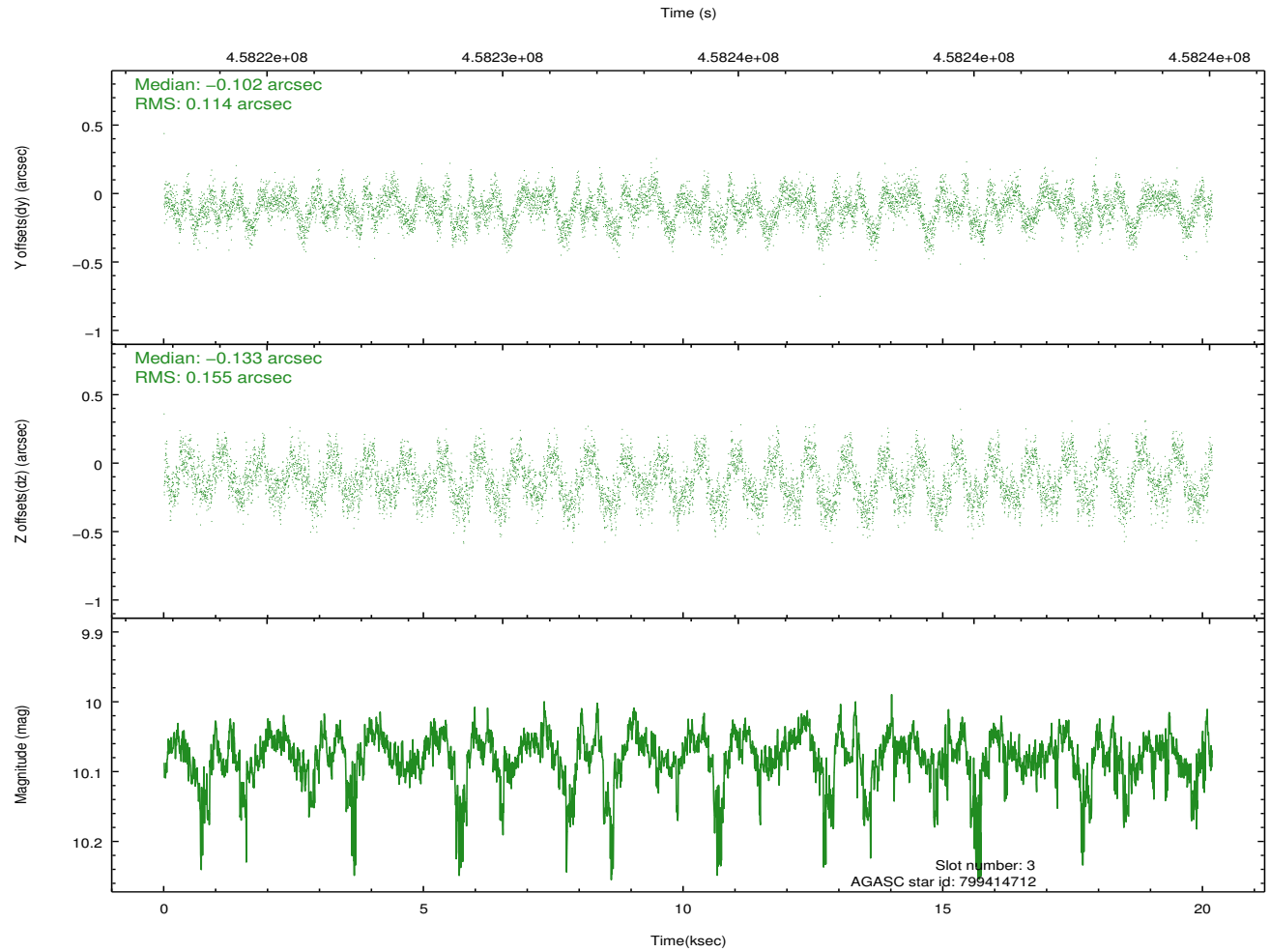
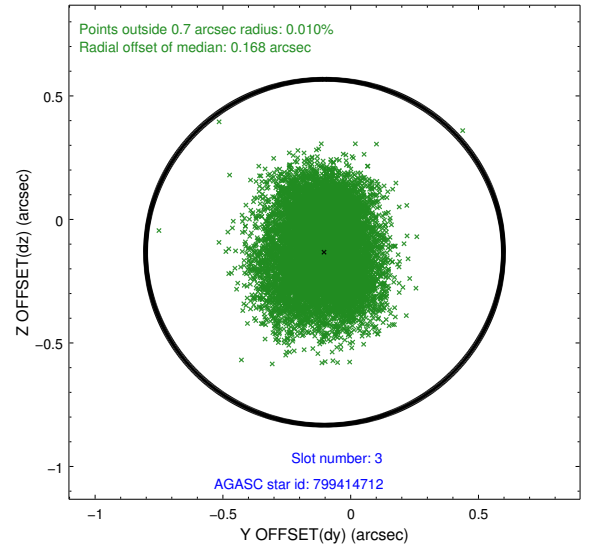
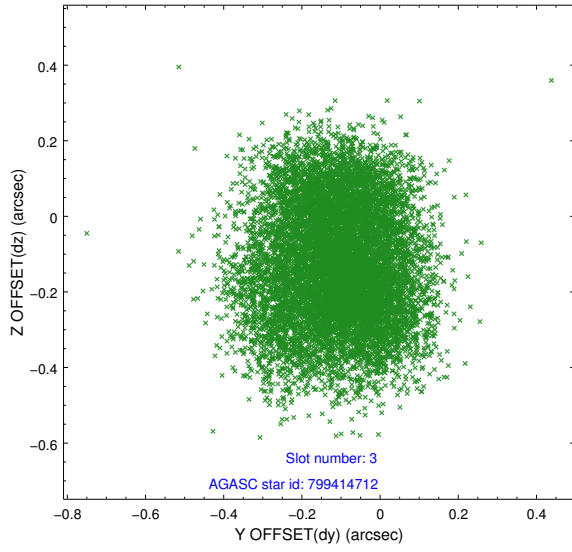


### Slot Statistics

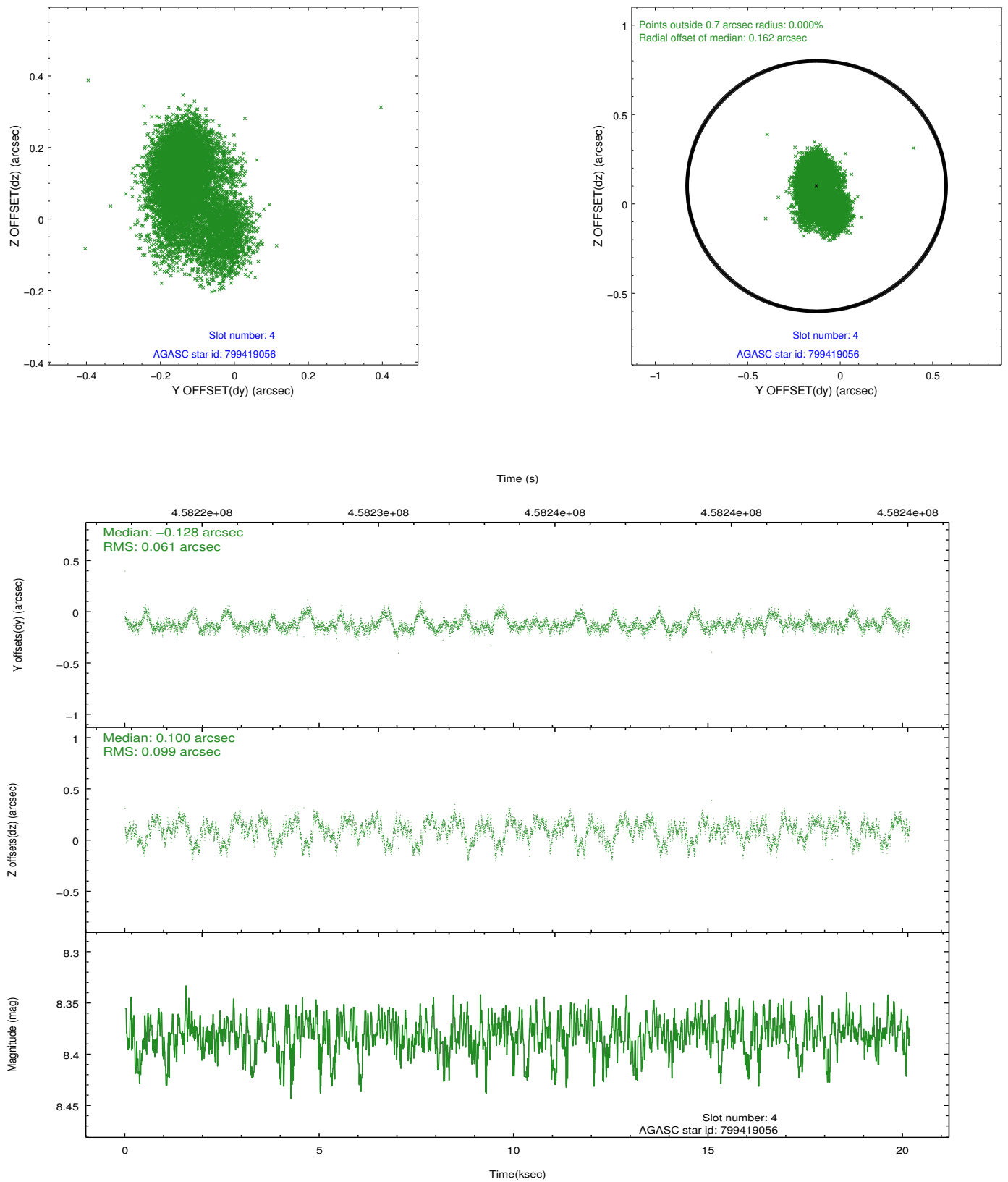
slot	status	id	mag	n_pts	med_dy	med_dz	dr1	dr2	ra	dec	mean_y	mean_z
0	FID	ACIS-S-2	6.92	4922	-0.097	-0.020	0.014	0.022	0.000000	0.000000	-767.83	-1737.78
1	FID	ACIS-S-4	7.01	4923	0.241	0.053	0.011	0.022	0.000000	0.000000	2145.72	170.55
2	FID	ACIS-S-5	7.04	4923	-0.178	-0.024	0.013	0.033	0.000000	0.000000	-1820.49	164.40
3	GUIDE	799414712	10.08	9829	-0.102	-0.133	0.211	0.318	178.350316	-22.195347	301.06	-2030.99
4	GUIDE	799419056	8.38	9841	-0.128	0.100	0.120	0.215	178.632140	-21.898352	-1086.87	-1718.18
5	GUIDE	799540008	9.64	9812	0.334	-0.263	0.128	0.207	178.780734	-22.287716	-92.79	-612.79
6	GUIDE	873727944	9.45	9805	-0.168	0.137	0.168	0.285	179.077083	-23.051199	1854.74	1562.50
7	GUIDE	873730920	10.11	9837	0.073	0.167	0.228	0.384	179.595161	-22.606329	-369.86	2317.45

## 2.4 Star Slots

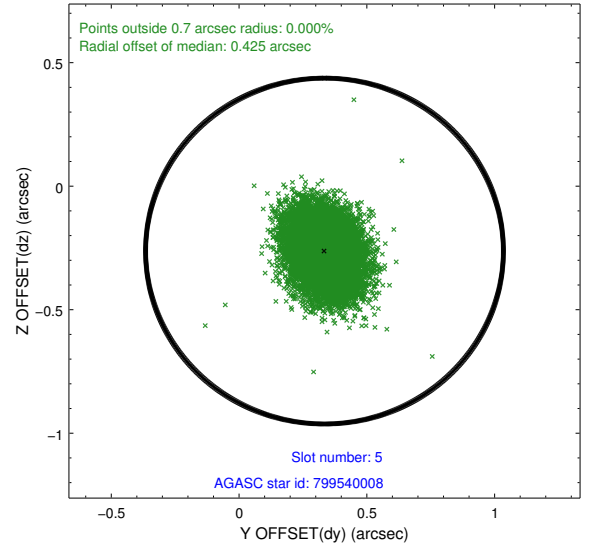
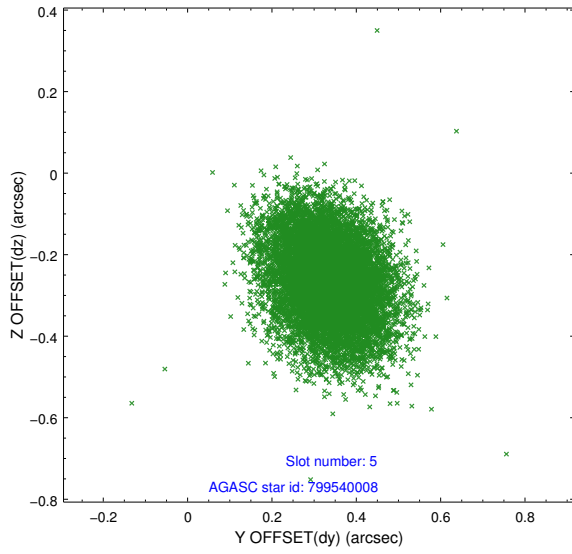
### 2.4.1 Slot 3



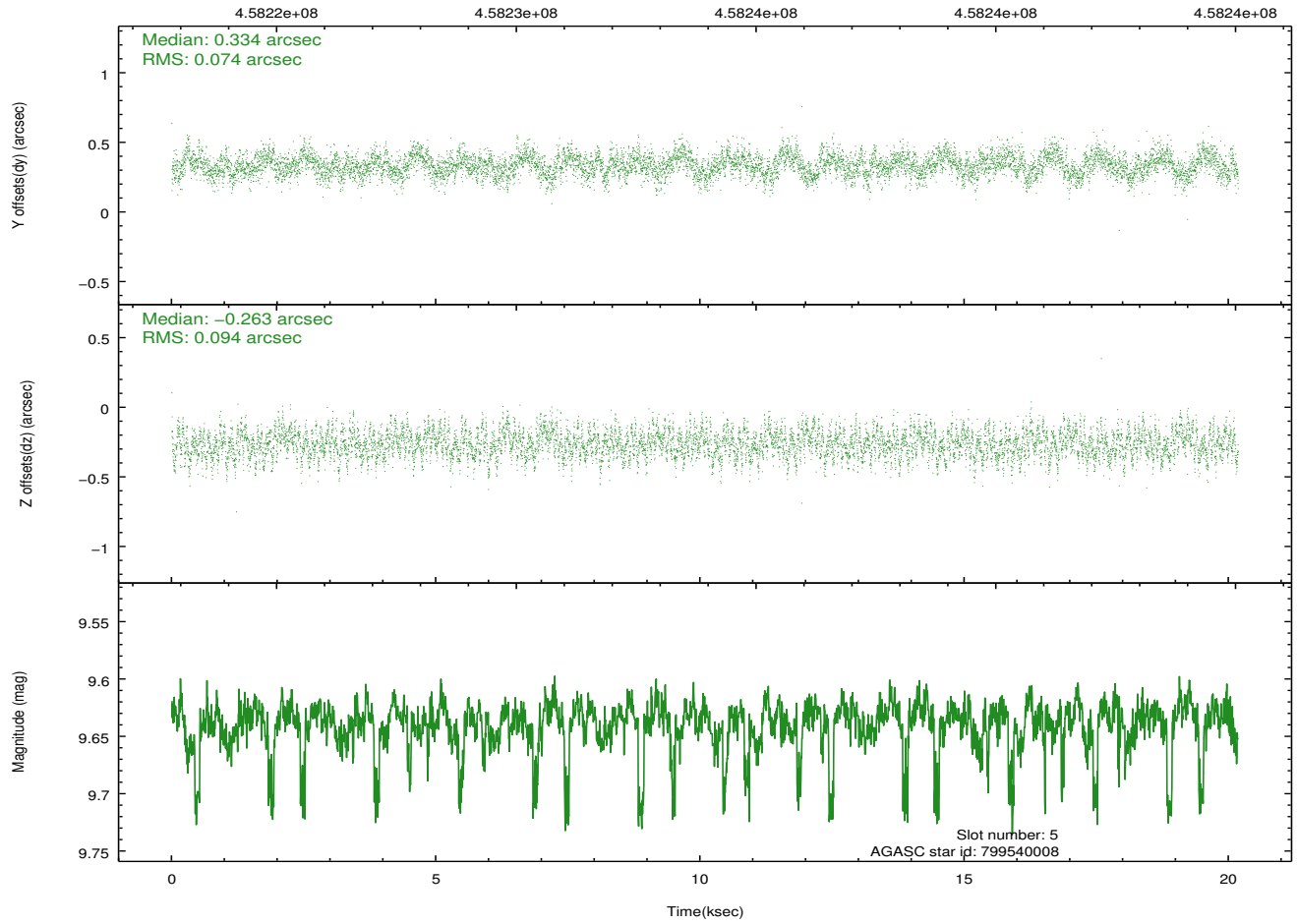
## 2.4.2 Slot 4



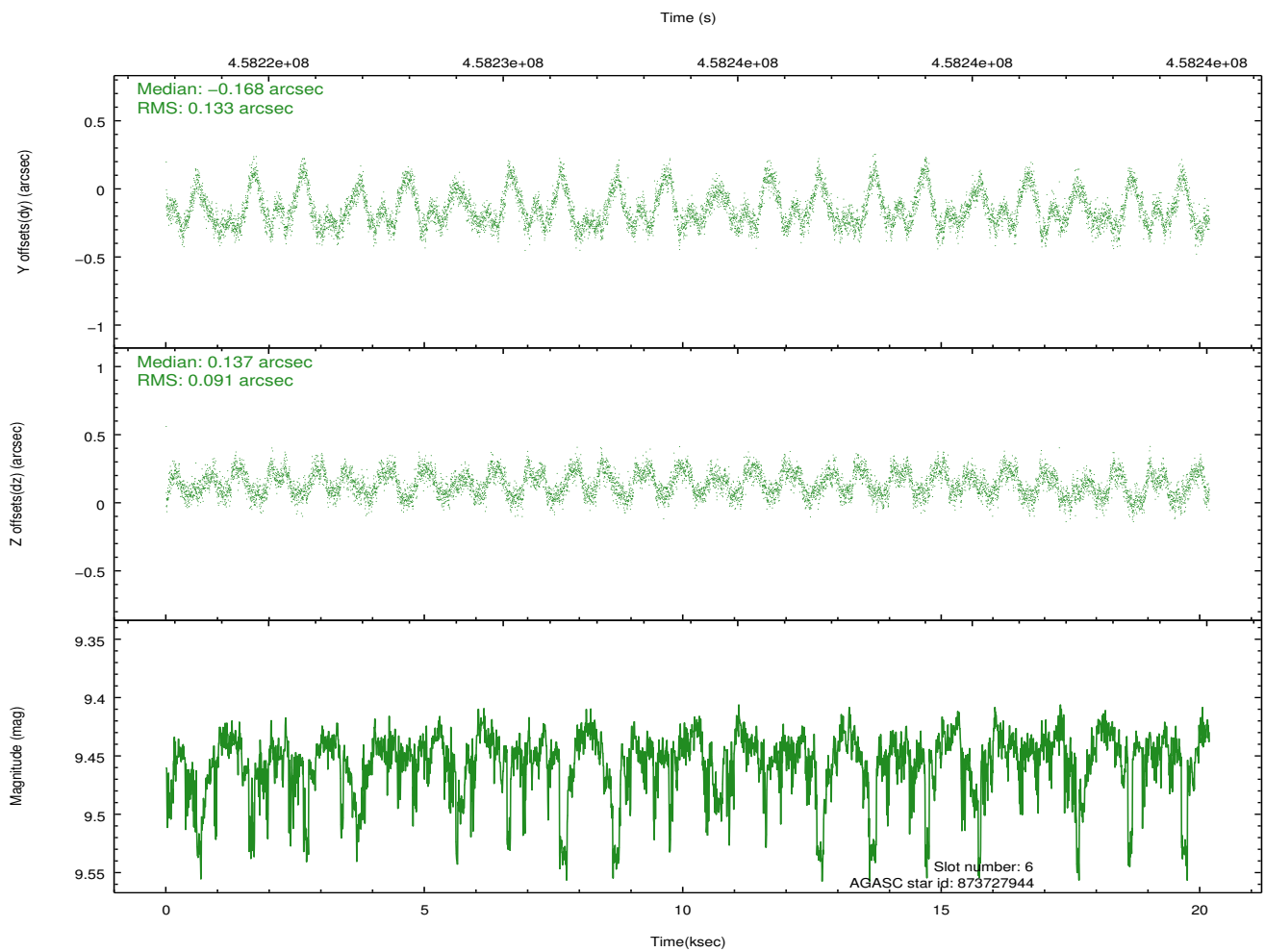
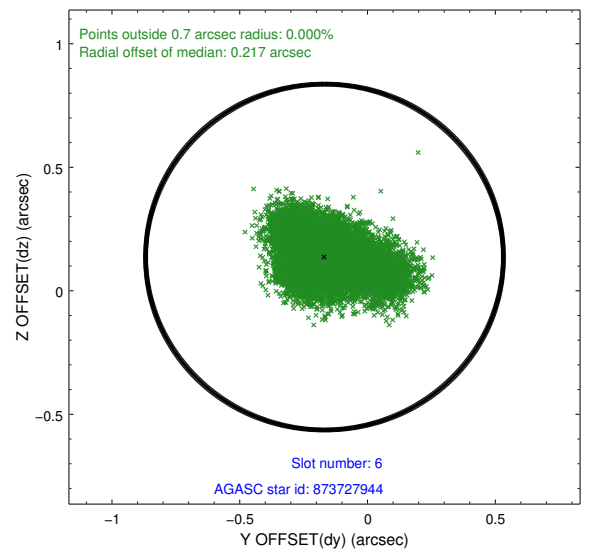
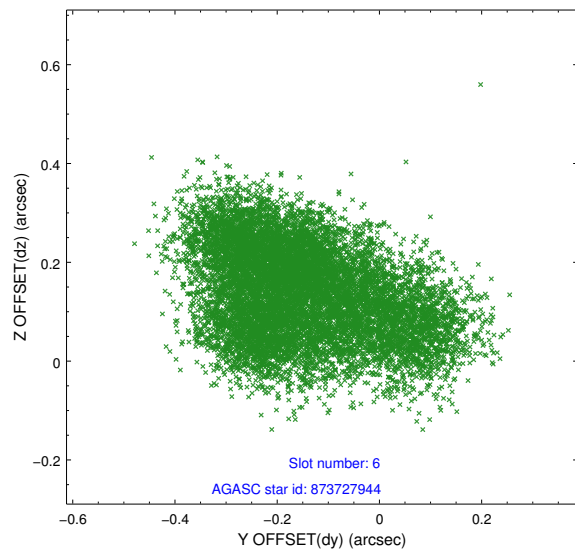
### 2.4.3 Slot 5



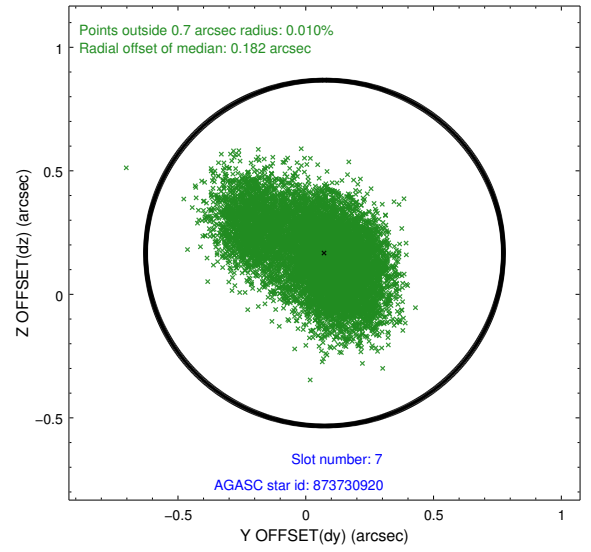
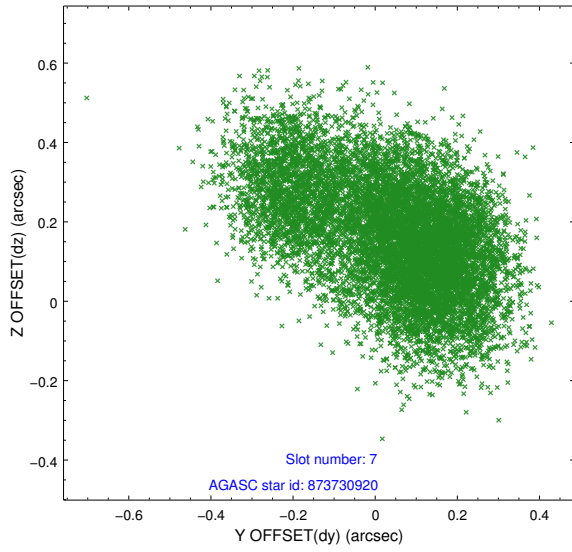
Time (s)



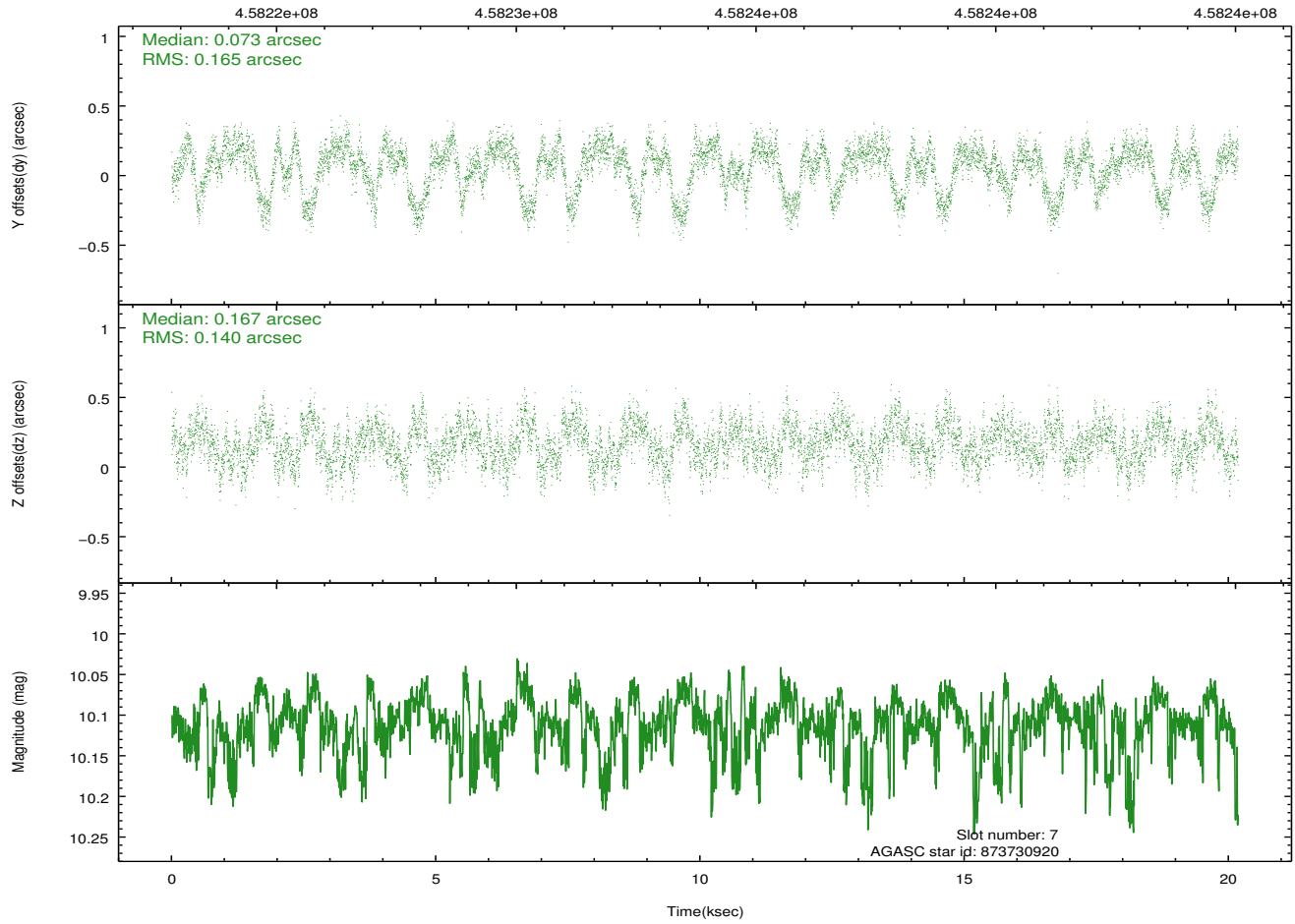
## 2.4.4 Slot 6



## 2.4.5 Slot 7

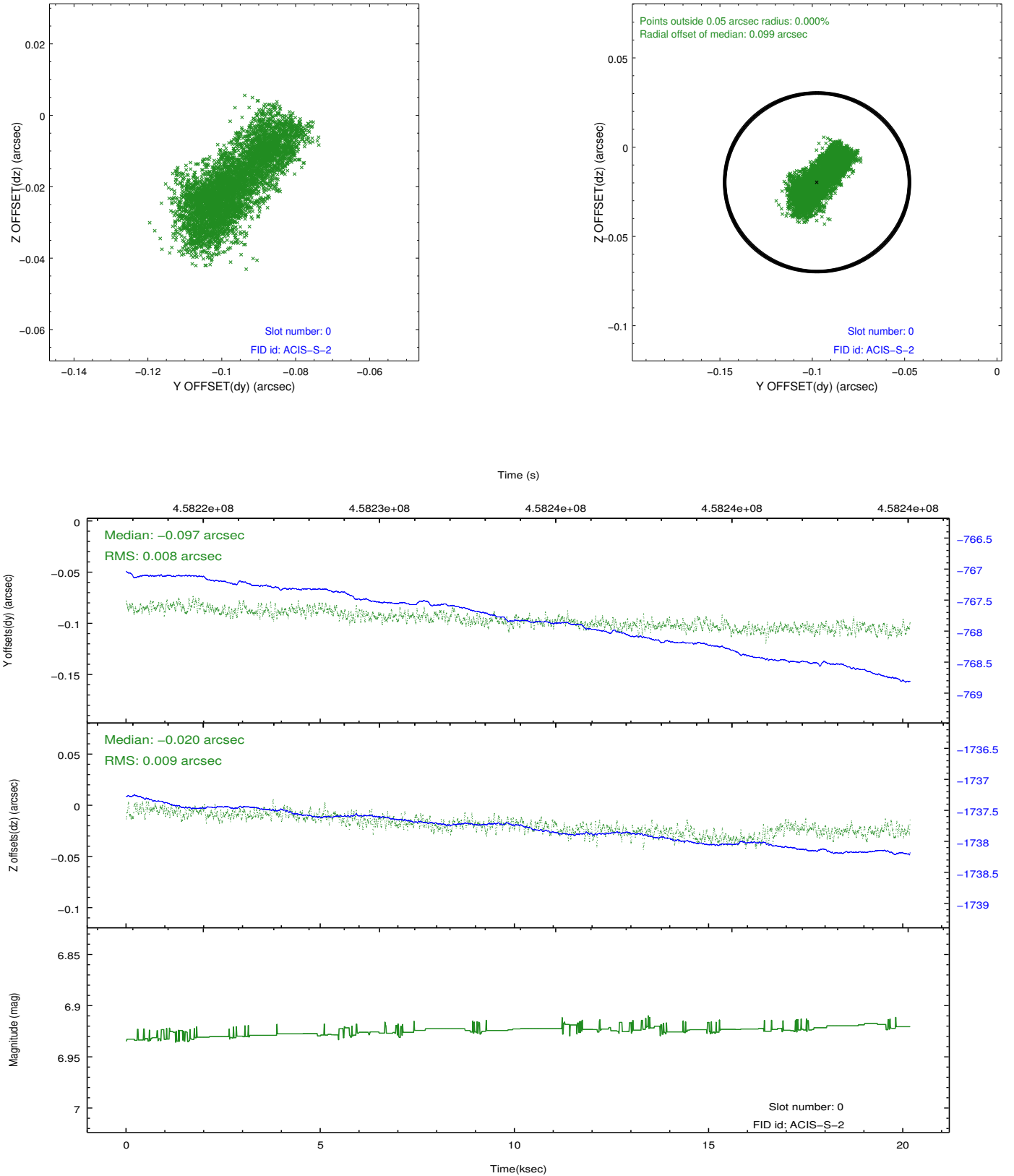


Time (s)

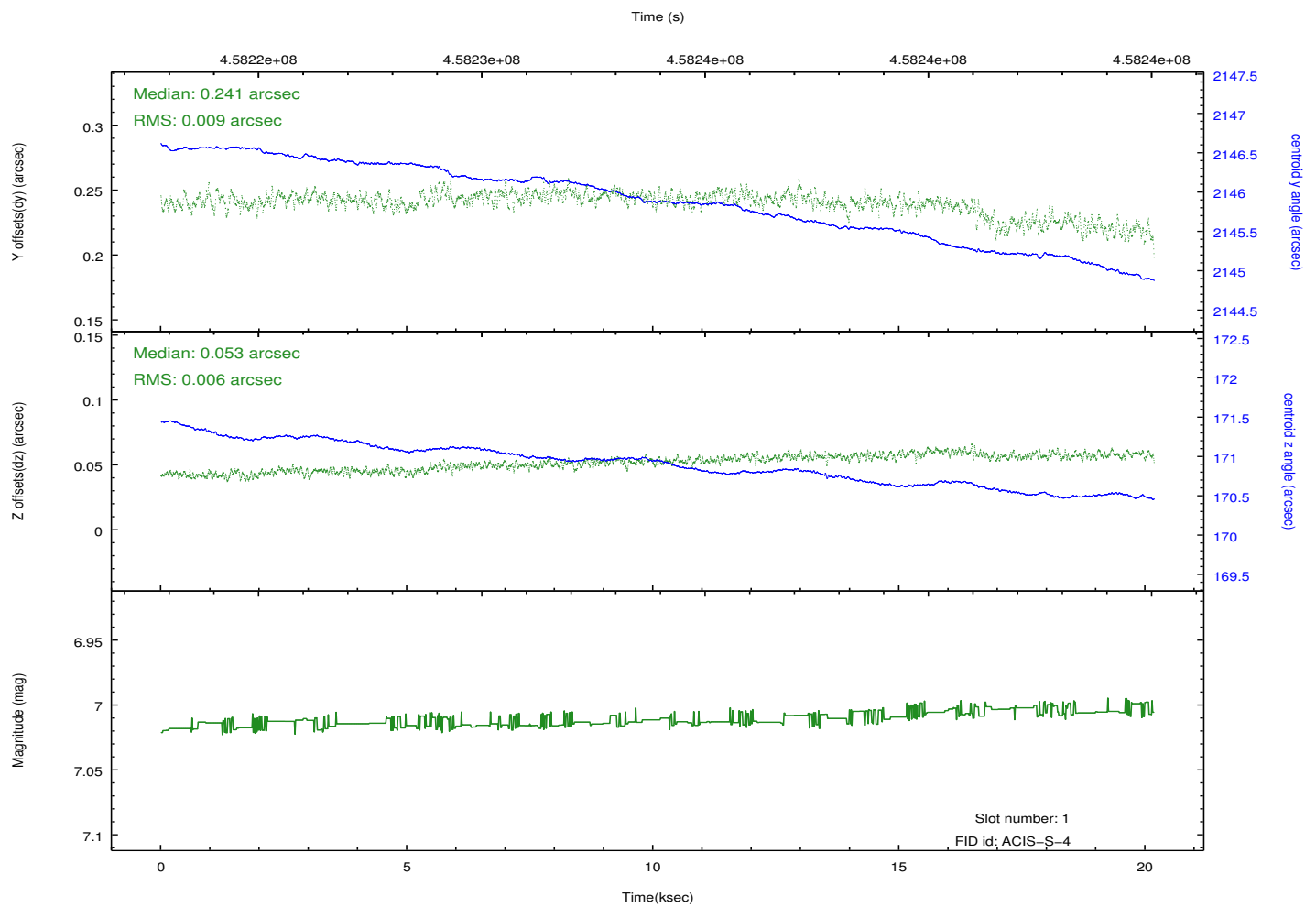
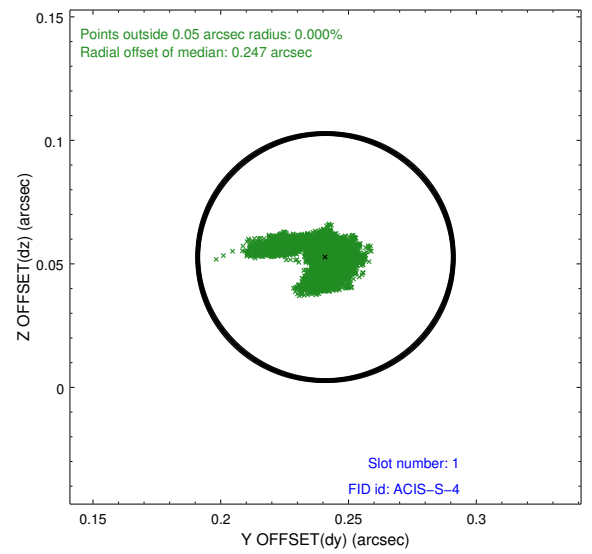
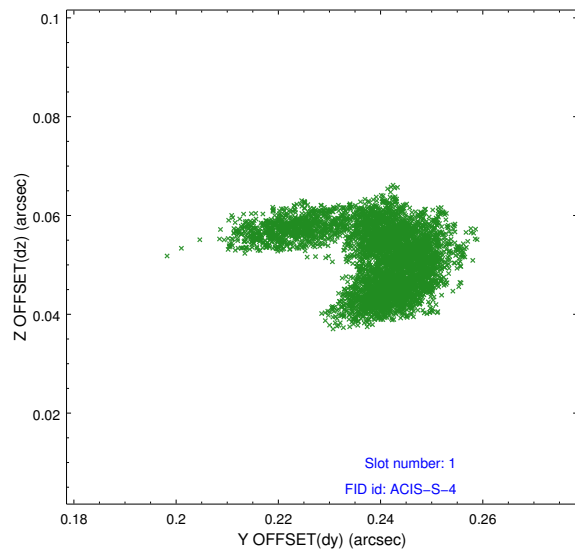


## 2.5 FID Slots

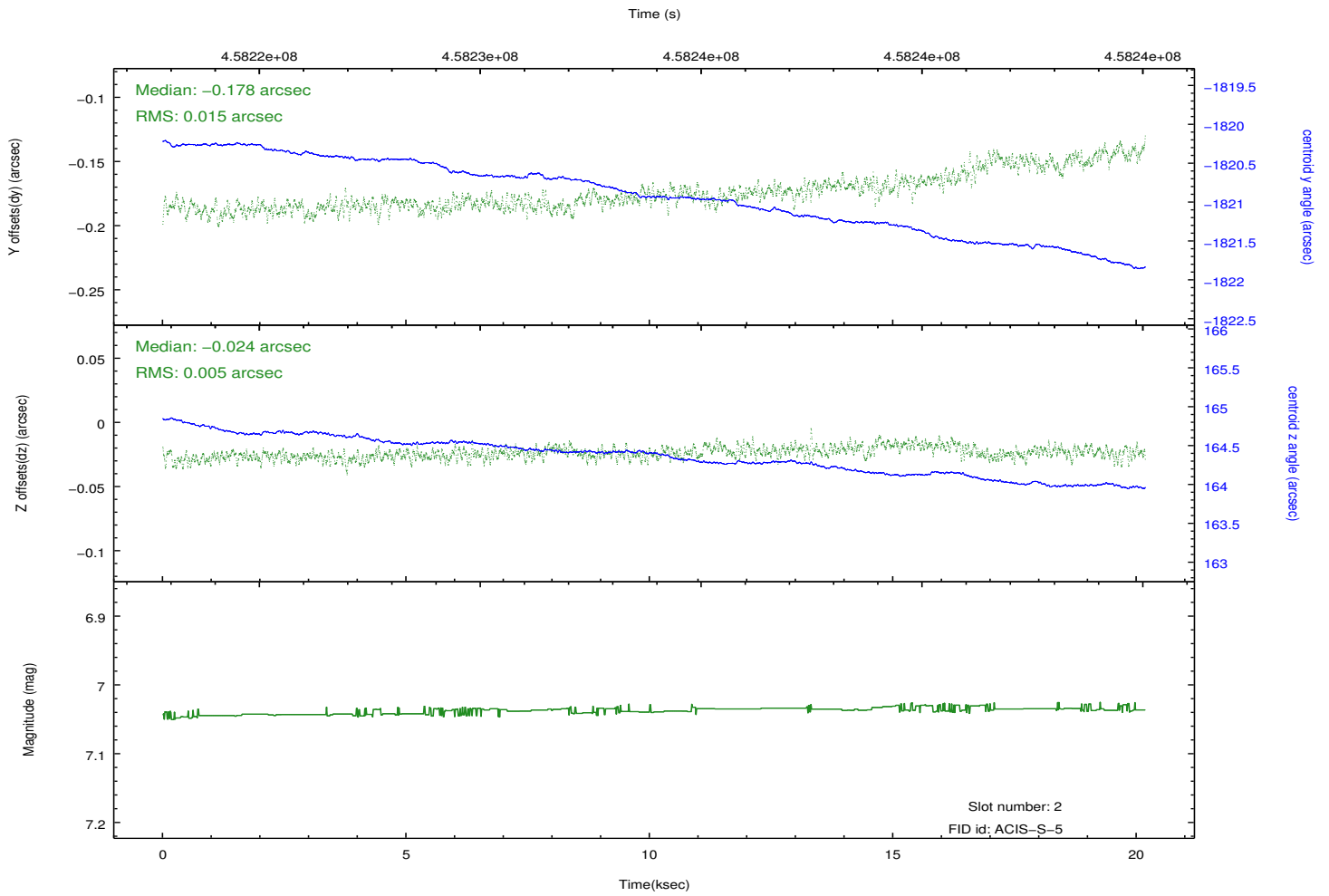
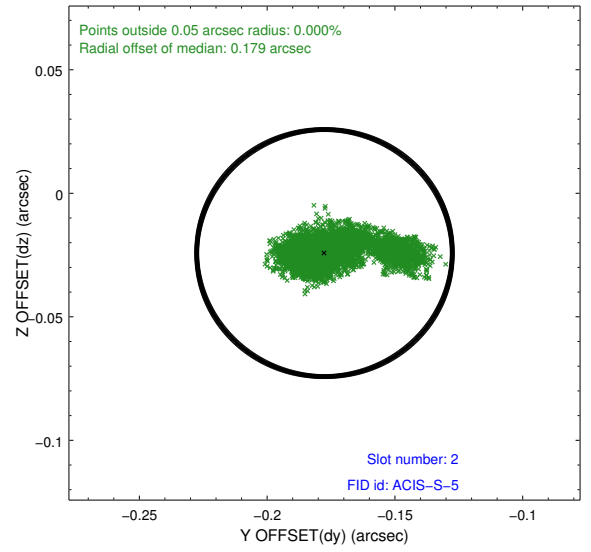
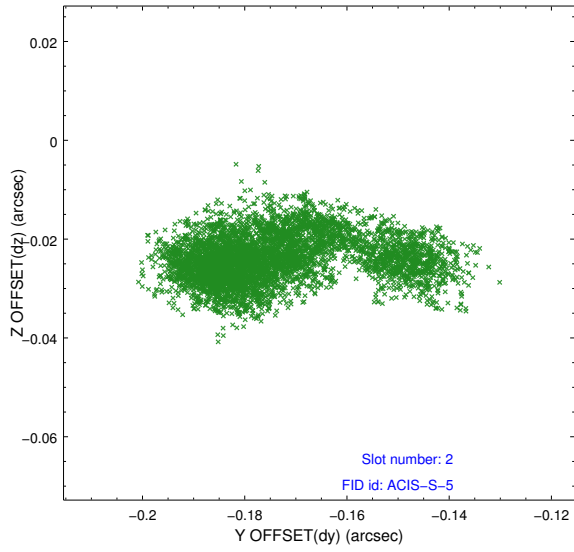
### 2.5.1 Slot 0



## 2.5.2 Slot 1



### 2.5.3 Slot 2



## A Summary

### A.1 Status

V&V Scientist	Jen Lauer
V&V Date (YYYY-MM-DD)	2012.07.10
V&V Edition	1
V&V Disposition and Status	OK
V&V Charge Time	20.062498597682

### A.2 Comments