

V&V Reference Report

L2 ASCDS Version : 8.4.3

Observation 13727 - L2 Version 1
Chandra X-Ray Center

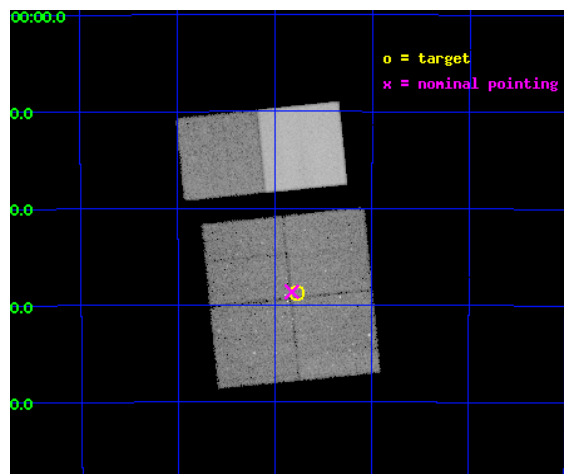
L2 Processing Date : Apr 17 2012

Contents

1	Front	2
2	OBI	3
2.1	OBI	3
2.1.1	Images	3
2.1.2	Bias	3
2.1.3	Parameters	4
2.1.4	Events	4
2.2	Compared Parameters	5
2.3	Aspect	6
2.4	Star Slots	9
2.4.1	Slot 3	9
2.4.2	Slot 4	10
2.4.3	Slot 5	11
2.4.4	Slot 6	12
2.4.5	Slot 7	13
2.5	FID Slots	14
2.5.1	Slot 0	14
2.5.2	Slot 1	15
2.5.3	Slot 2	16
A	Summary	17
A.1	Status	17
A.2	Comments	17

1 Front

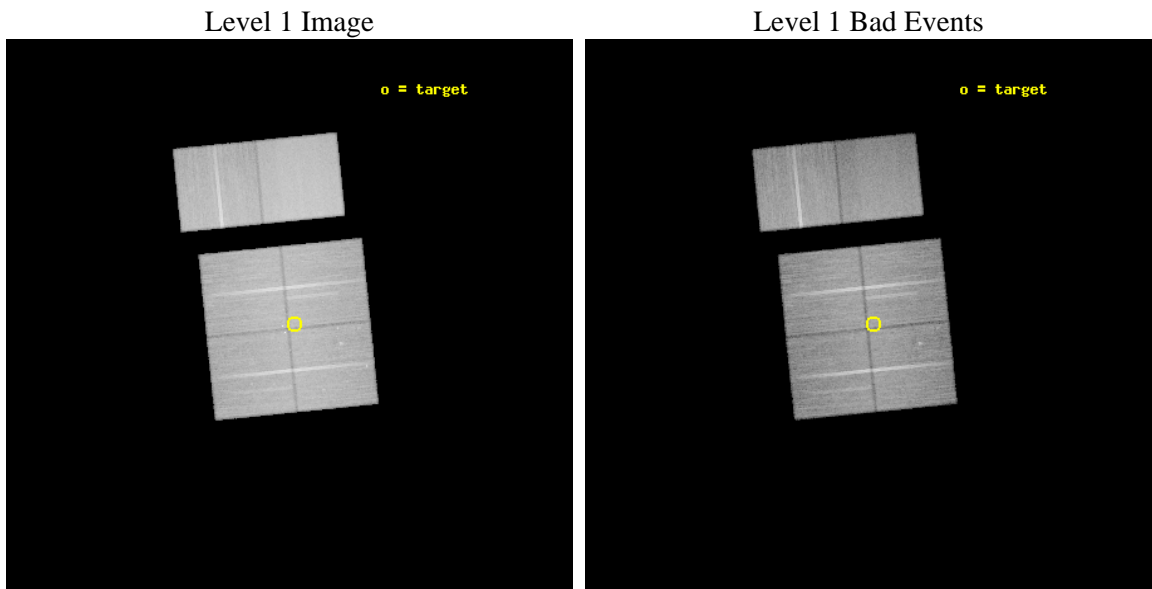
seq_num	401412	Sequence number
obs_id	13727	Observation id
title	X-Ray Constraints on the Dynamical History of Omega Centauri	Propo
observer	Dr. Adrienne Cool	Principal investigator
object	NGC 5139	Source name
dtcycle	0	
cycle	P	events from which exps? Prim/Second/Both
ra_targ	201.694583	Observer's specified target RA [deg]
dec_targ	-47.479083	Observer's specified target Dec [deg]
ra_nom	201.70628036662	Nominal RA [deg]
dec_nom	-47.477468532274	Nominal Dec [deg]
roll_nom	354.21730754542	Nominal Roll [deg]
revision	1	Processing version of data
ontime	49154.958419979	Sum of GTIs [s]
livetime	48532.528738902	Livetime [s]
ontime0	49151.594249725	Sum of GTIs [s]
ontime1	49154.876339972	Sum of GTIs [s]
ontime2	49154.917379975	Sum of GTIs [s]
ontime3	49154.958419979	Sum of GTIs [s]
ontime6	49132.353067815	Sum of GTIs [s]
ontime7	49154.999459982	Sum of GTIs [s]
l2events	313401	Number of level 2 events



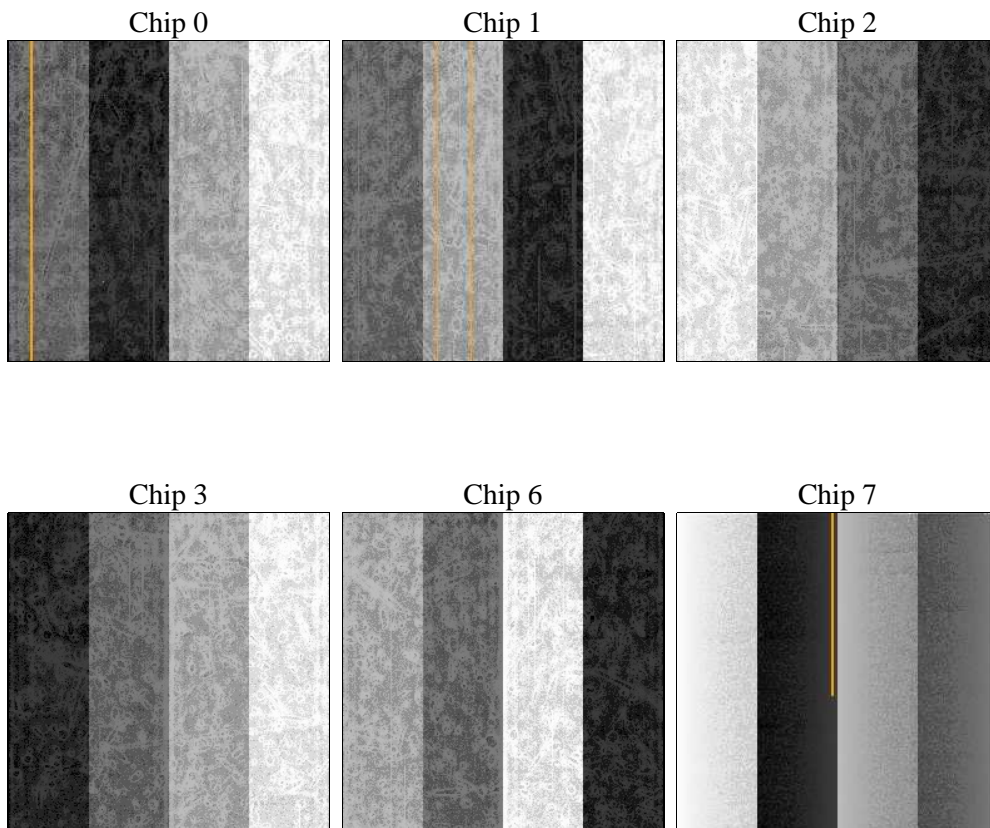
2 OBI

2.1 OBI

2.1.1 Images



2.1.2 Bias



2.1.3 Parameters

obi_num	0	Obi number	sched_exp_time	49191.000000	[s] Scheduled observation exposure time
ascdsver	8.4.3	Processing system revision	ontime	49154.958419979	Sum of GTIs [s]
caldbver	4.4.9	 	ontime0	49151.594249725	Sum of GTIs [s]
date	2012-04-17T05:15:56	Date and time of file creation	ontime1	49154.876339972	Sum of GTIs [s]
revision	1	Processing version of data	ontime2	49154.917379975	Sum of GTIs [s]
			ontime3	49154.958419979	Sum of GTIs [s]
			ontime6	49132.353067815	Sum of GTIs [s]
			ontime7	49154.999459982	Sum of GTIs [s]
			l1events	1846789	Number of level 1 events

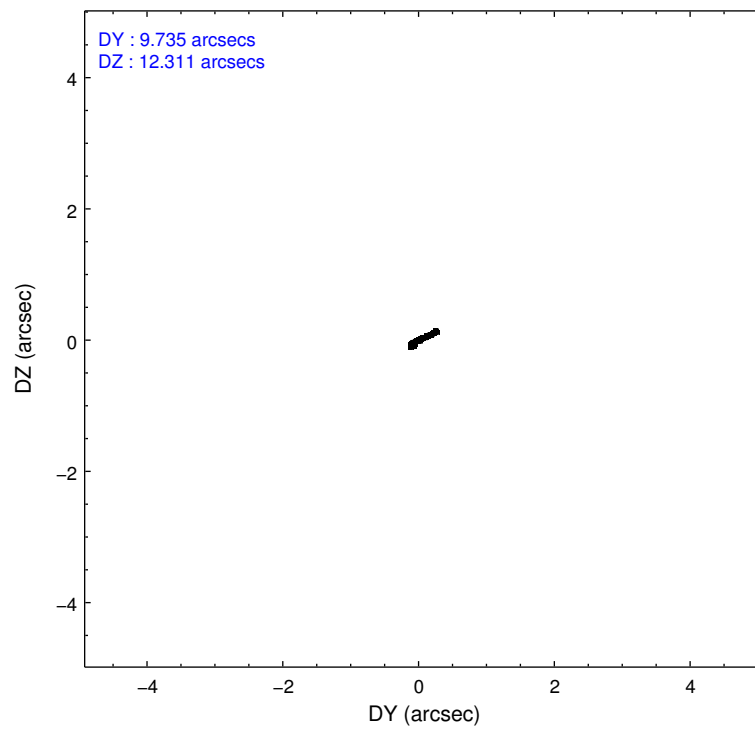
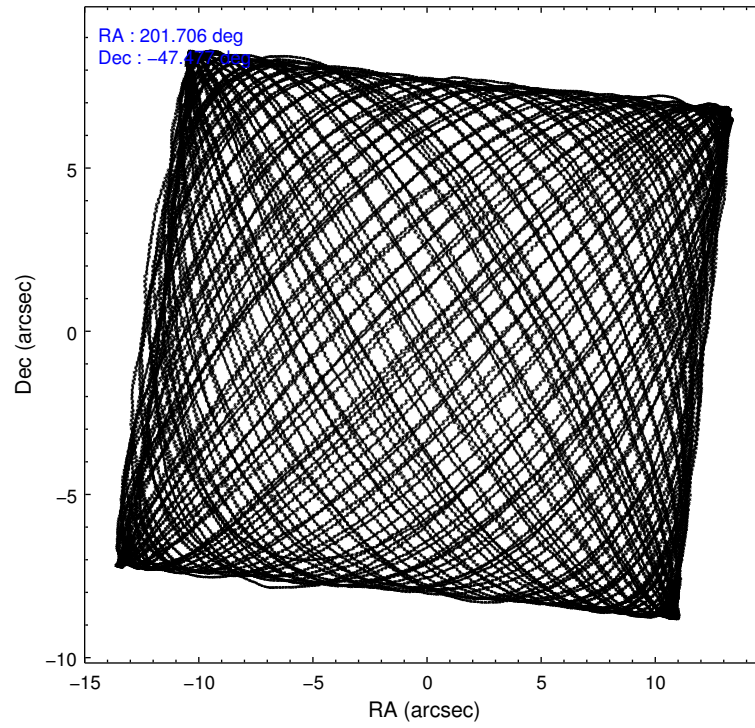
2.1.4 Events

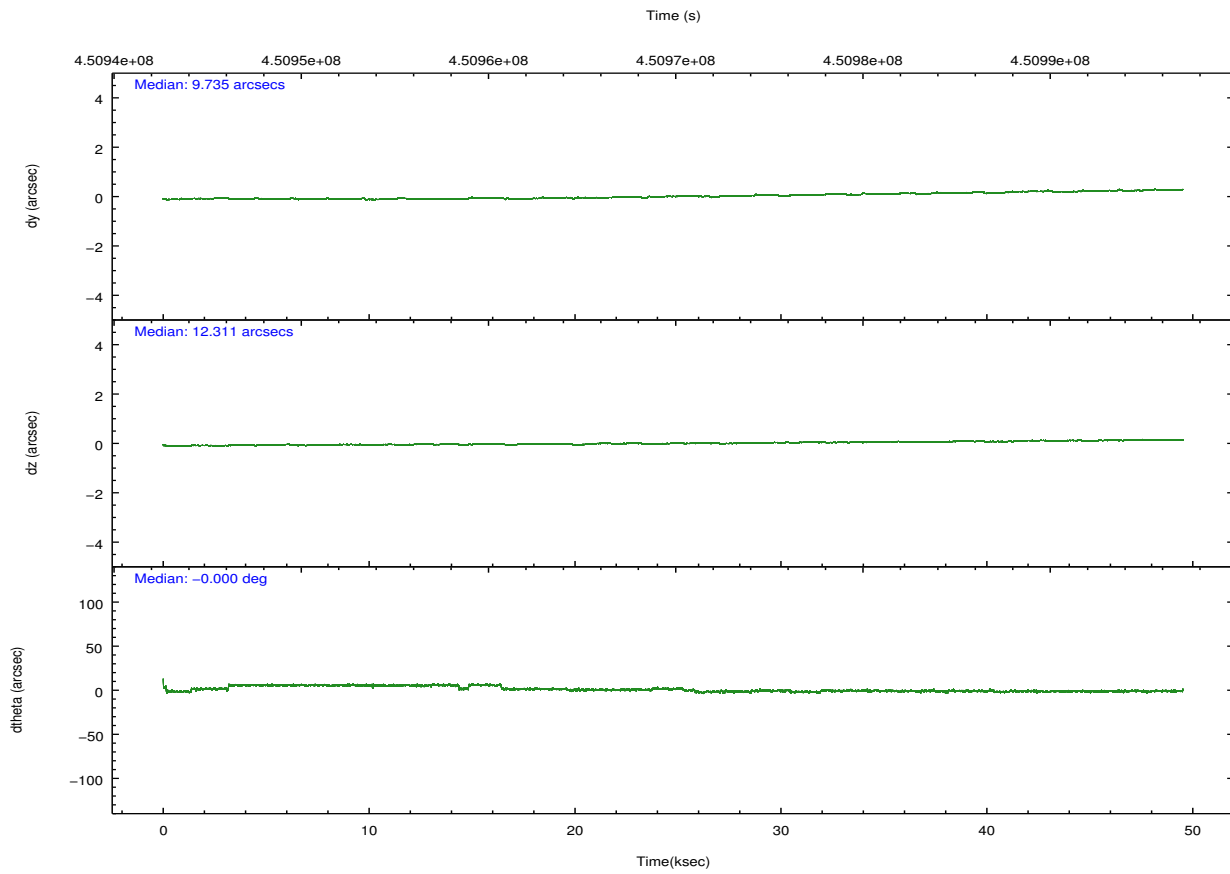
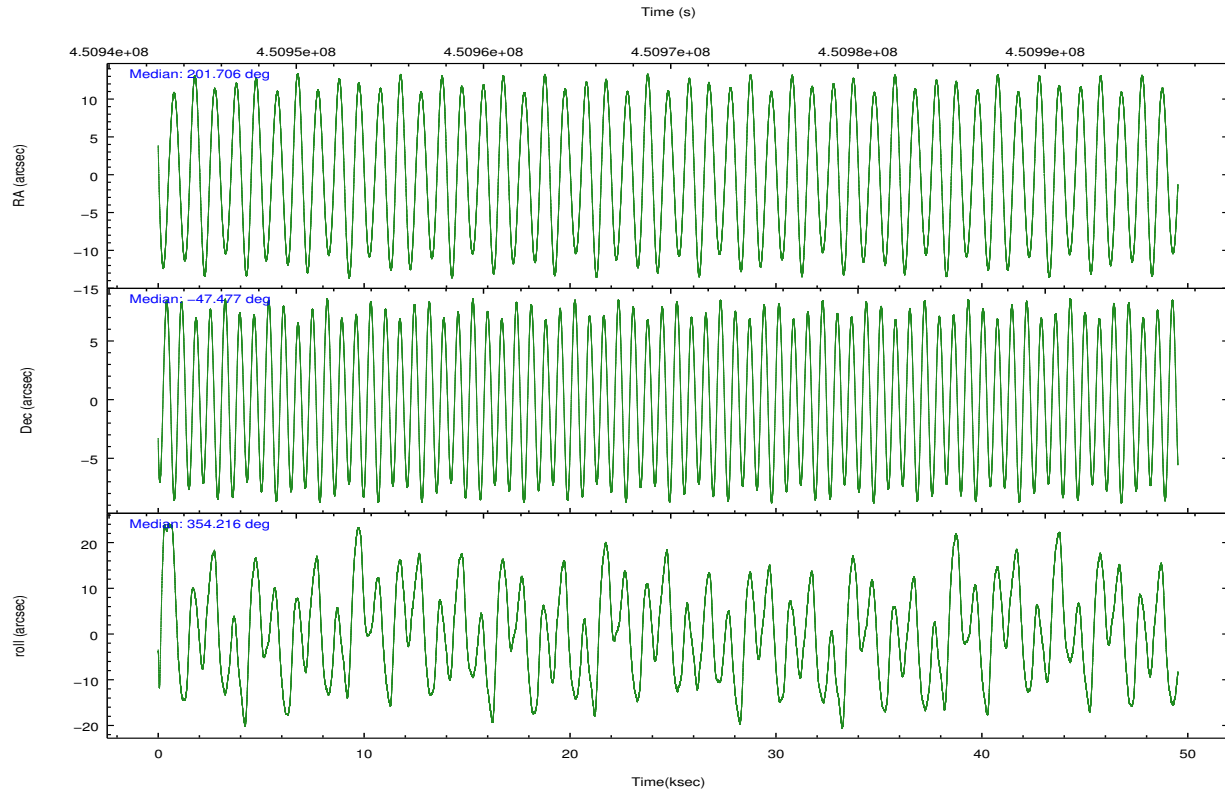
	ccd 0	ccd 1	ccd 2	ccd 3	ccd 6	ccd 7		ccd 0	ccd 1	ccd 2	ccd 3	ccd 6	ccd 7
level 1 events	268788	283009	299593	294633	310245	390521	grade 0 events	12559	14507	12365	11594	11815	14500
rejected events	233968	244246	266356	262482	275086	220132		4%	5%	4%	3%	3%	3%
rejected %	87%	86%	88%	89%	88%	56%	grade 1 events	178	209	165	164	157	455
								0%	0%	0%	0%	0%	0%
							grade 2 events	8224	8547	7706	7041	8042	34701
								3%	3%	2%	2%	2%	8%
							grade 3 events	3676	3729	3406	3416	3538	14345
								1%	1%	1%	1%	1%	3%
							grade 4 events	3306	3858	3436	3472	3632	14242
								1%	1%	1%	1%	1%	3%
							grade 5 events	13220	13882	12389	14889	14870	39631
								4%	4%	4%	5%	4%	10%
							grade 6 events	7059	8124	6332	6633	8134	92621
								2%	2%	2%	2%	2%	23%
							grade 7 events	220566	230153	253794	247424	260057	180026
								82%	81%	84%	83%	83%	46%

2.2 Compared Parameters

Parameter	Planned	Actual	Parameter	Planned	Actual
Instrument	ACIS	ACIS	Obspar format version number	7	7
Detector	ACIS-012367	ACIS-012367	Obspar file type	PREDICTED	ACTUAL
Grating	NONE	NONE	Obspar update status	NONE	UPDATED
Data mode	VFAINT	VFAINT	CCD I0 on	Y	Y
Observation mode	POINTING	POINTING	CCD I1 on	Y	Y
[deg] Pointing RA	201.669261	201.7062803666182	CCD I2 on	Y	Y
[deg] Pointing Dec	-47.488845	-47.47746853227424	CCD I3 on	Y	Y
[deg] Pointing Roll	353.981334	354.2173075454248	CCD S0 on	N	N
[mm] SIM focus pos	-0.782348	-0.7809083437167272	CCD S1 on	N	N
[mm] SIM defocus	0	0.001439871863259334	CCD S2 on	O1	Y
[mm] SIM translation stage pos	-233.592463	-233.5874344608287	CCD S3 on	O2	Y
[mm] SIM translation stage offset	0	-0.005018542100998502	CCD S4 on	N	N
[s] Observation start time (MET)	450945418.184000	450944382.5445	CCD S5 on	N	N
Observation start date	2012-04-16T06:35:52	2012-04-16T06:19:42	Number of optional ACIS chips dropped	0	0
[s] Observation end time (MET)	450994609.184000	450995442.92221	On-chip summing requested	N	N
Observation end date	2012-04-16T20:15:43	2012-04-16T20:30:42	Subarray requested	NONE	NONE
Read mode	TIMED	TIMED	Alternating exposures requested	N	N
			[s] Primary exposure time	0.000000	3.2

2.3 Aspect



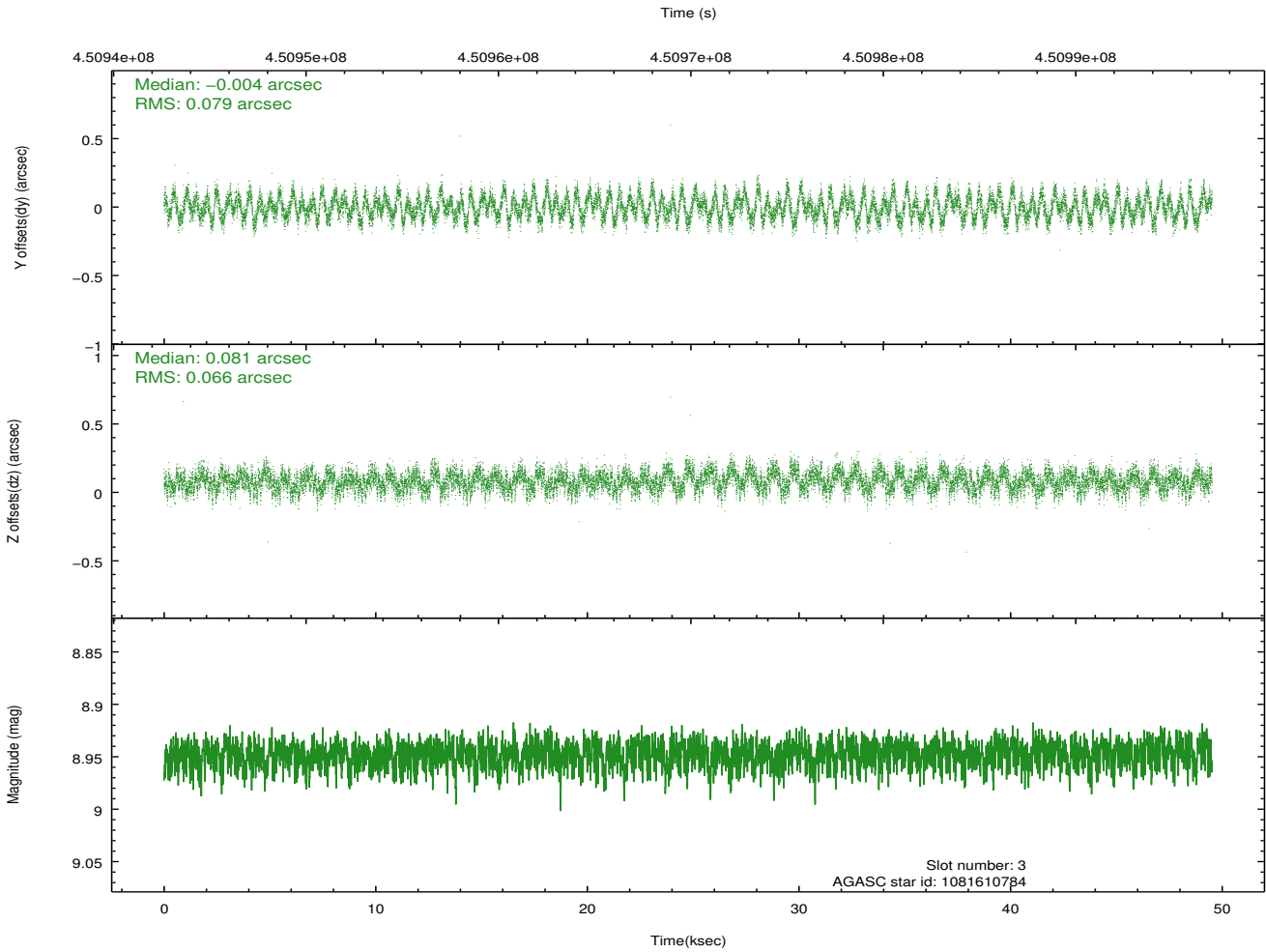
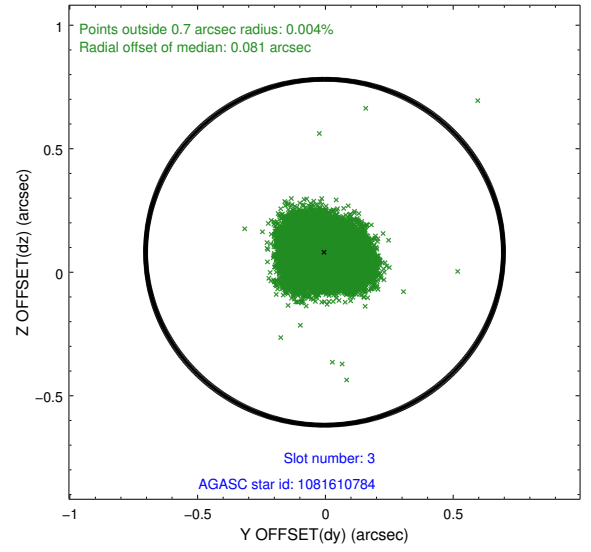
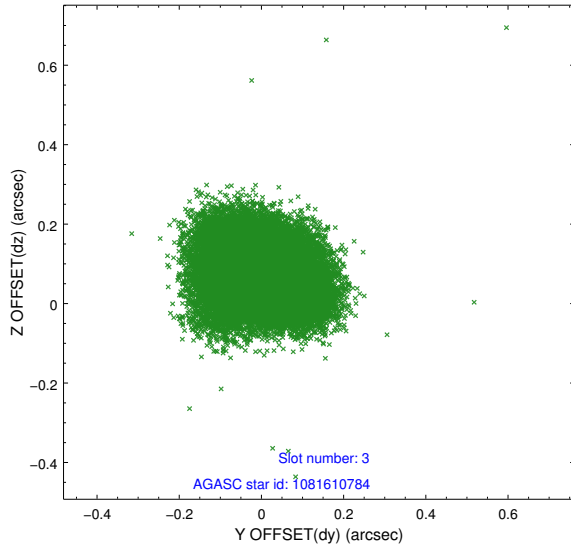


Slot Statistics

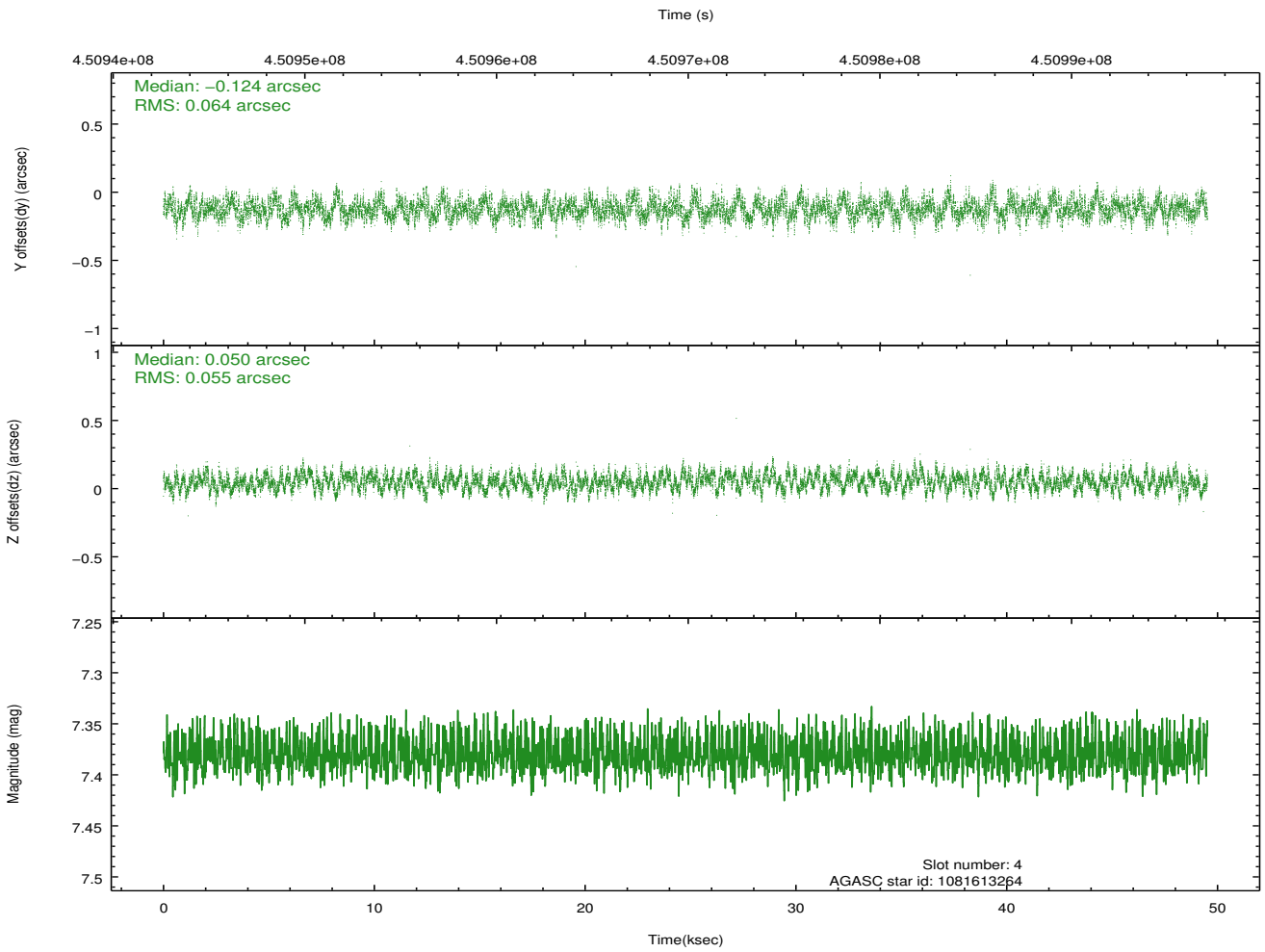
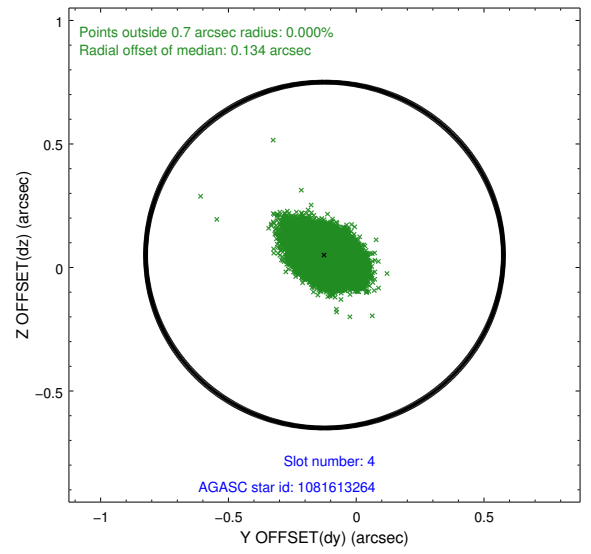
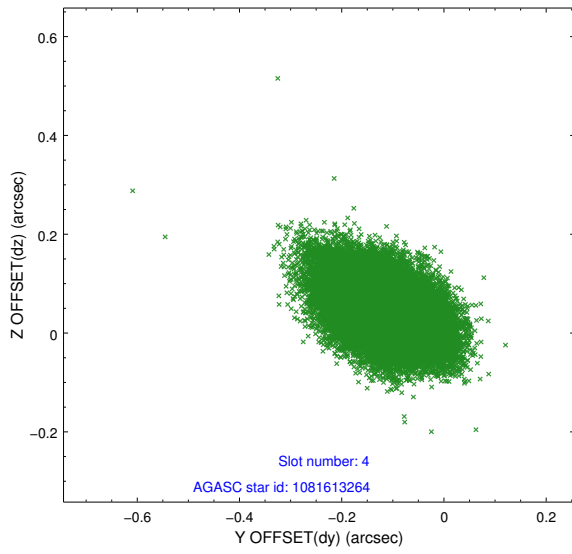
slot	status	id	mag	n_pts	med_dy	med_dz	dr1	dr2	ra	dec	mean_y	mean_z
0	FID	ACIS-I-4	7.07	12078	0.182	0.039	0.019	0.055	0.000000	0.000000	2150.02	1063.99
1	FID	ACIS-I-5	7.14	12077	-0.270	0.034	0.013	0.022	0.000000	0.000000	-1818.42	1061.89
2	FID	ACIS-I-6	7.14	12077	-0.014	-0.006	0.022	0.062	0.000000	0.000000	395.43	1706.12
3	GUIDE	1081610784	8.95	24150	-0.004	0.081	0.111	0.173	201.084601	-47.898520	-1247.66	-1619.72
4	GUIDE	1081613264	7.38	24158	-0.124	0.050	0.090	0.145	202.400675	-47.875826	1903.65	-1208.65
5	GUIDE	1081617288	9.23	24133	-0.037	0.168	0.121	0.186	201.247274	-48.058741	-793.56	-2149.28
6	GUIDE	1081621480	8.01	24154	0.127	-0.053	0.105	0.168	201.436136	-47.819027	-435.23	-1242.28
7	GUIDE	1081627568	10.47	23800	0.049	-0.247	0.288	0.449	201.337410	-47.032947	-981.05	1544.96

2.4 Star Slots

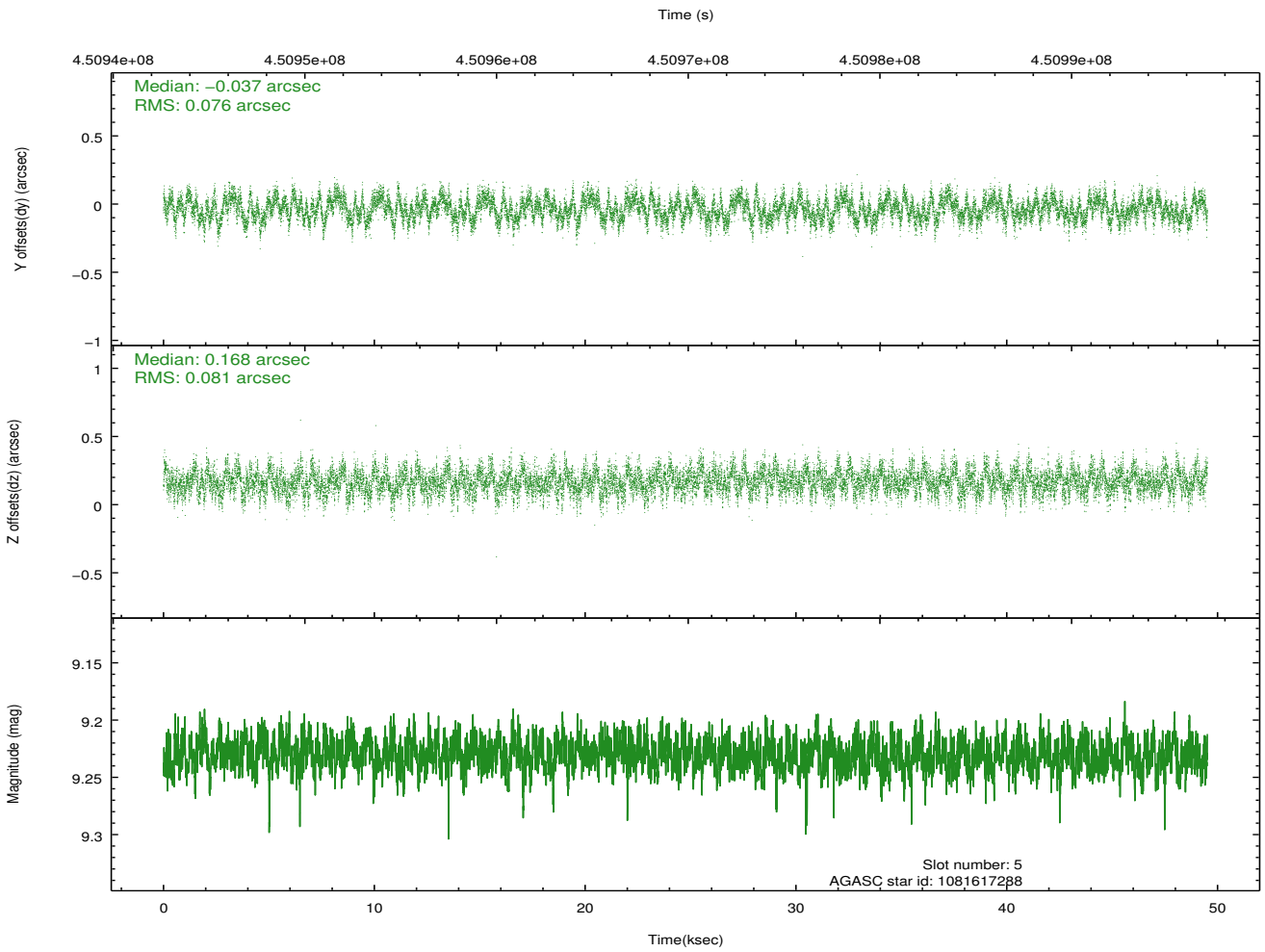
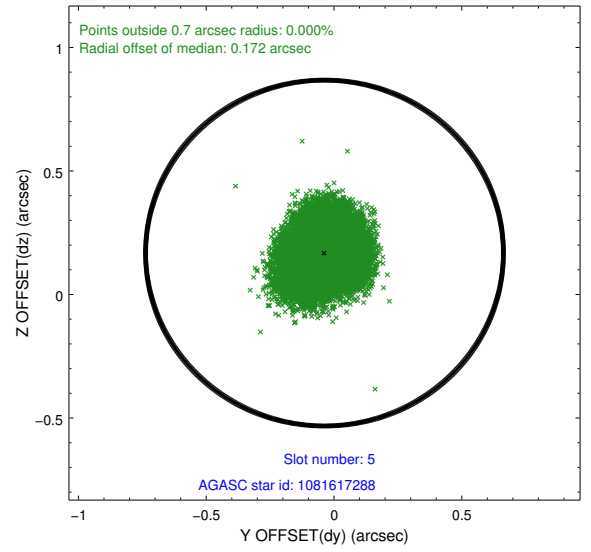
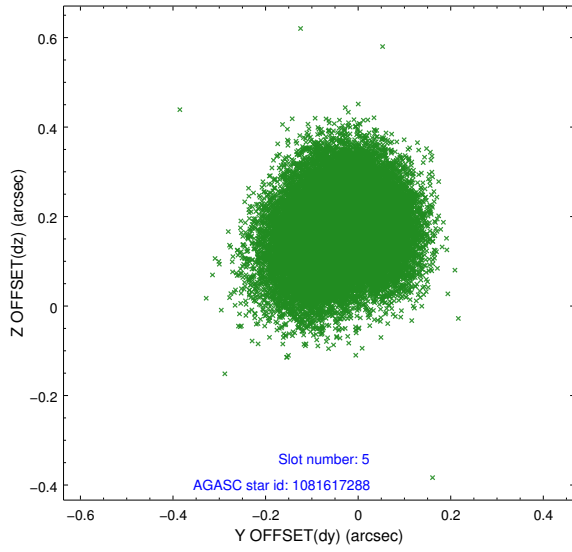
2.4.1 Slot 3



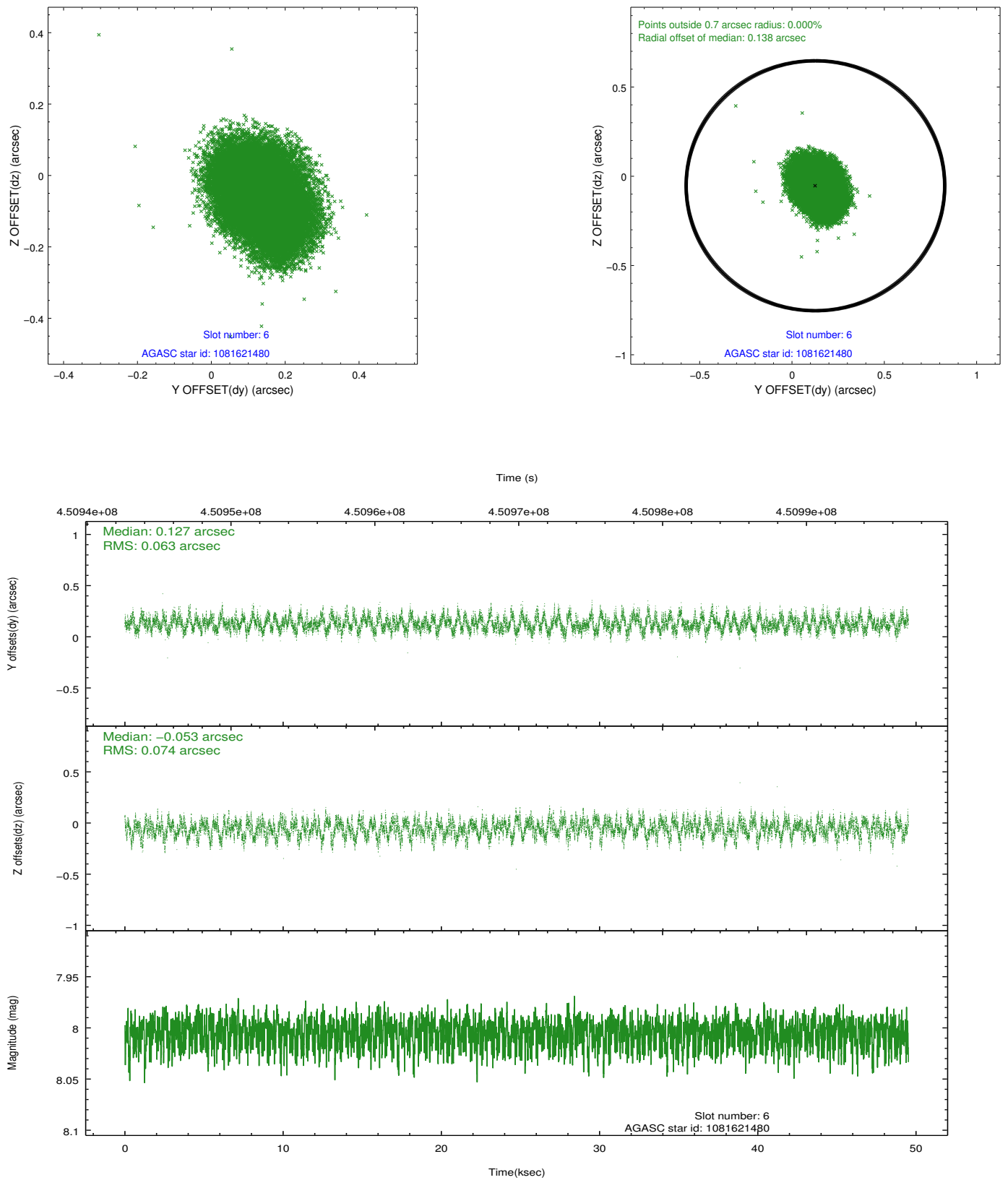
2.4.2 Slot 4



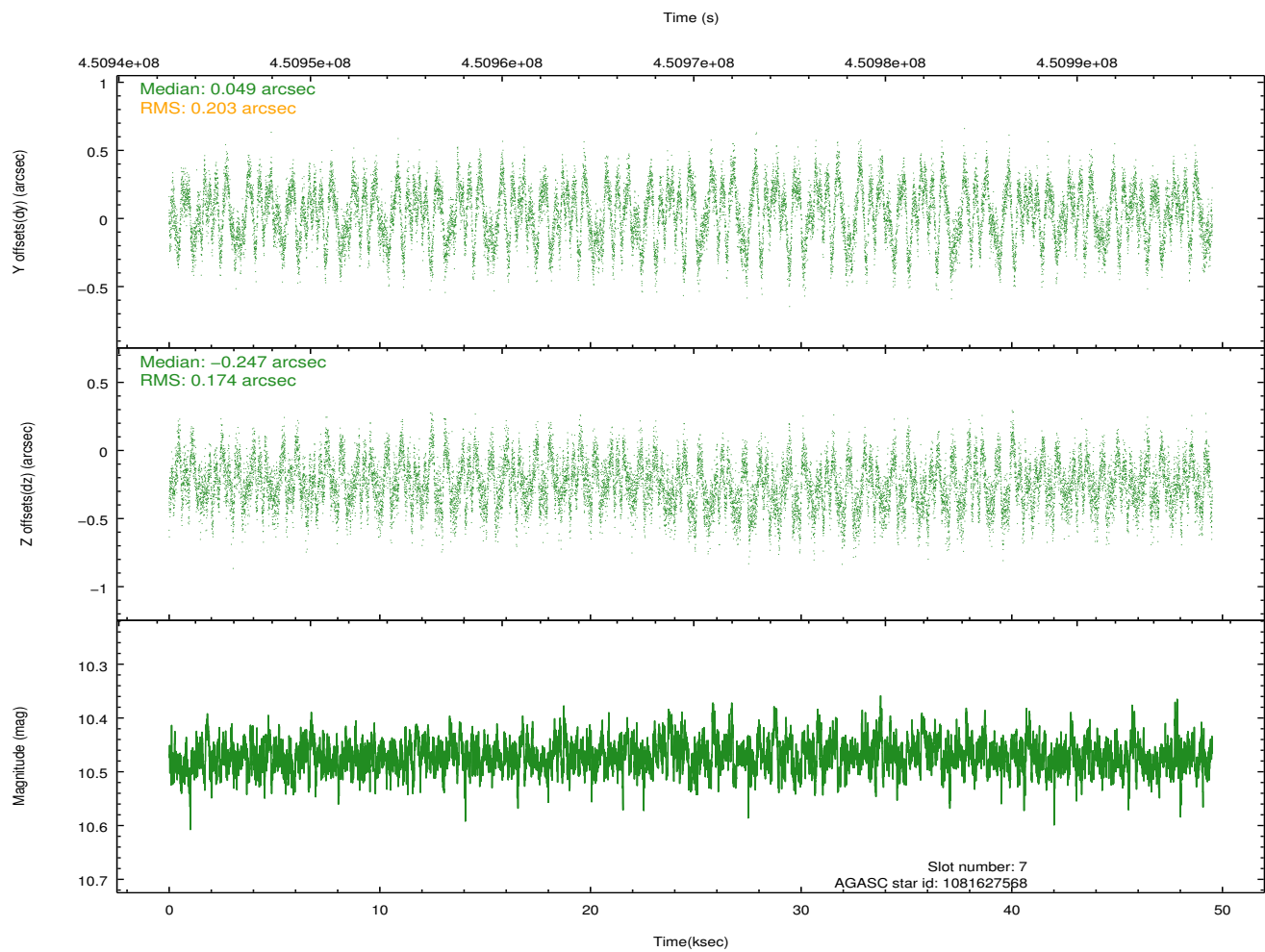
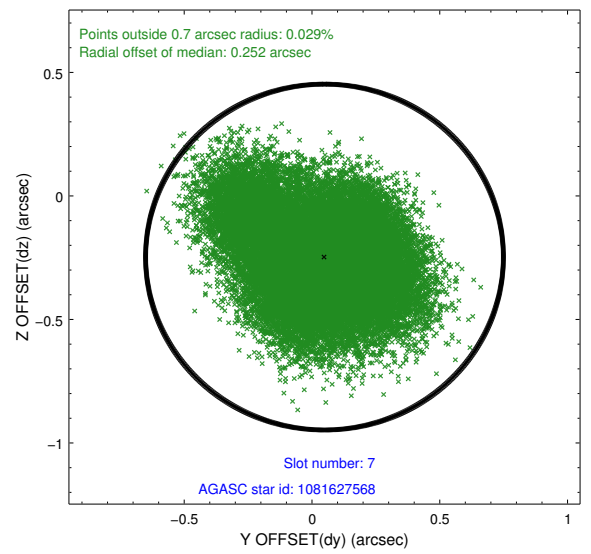
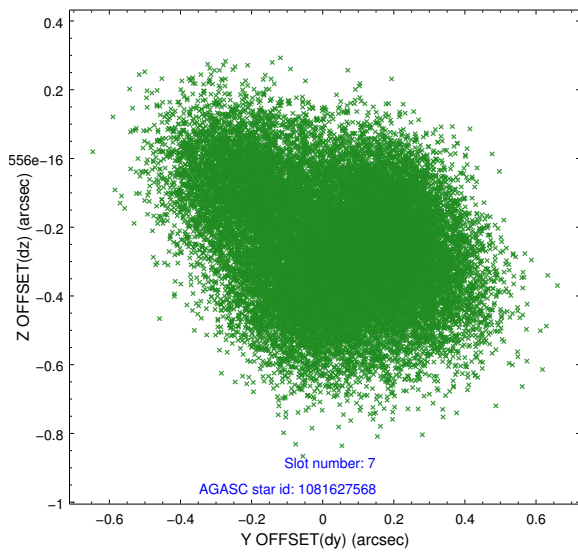
2.4.3 Slot 5



2.4.4 Slot 6

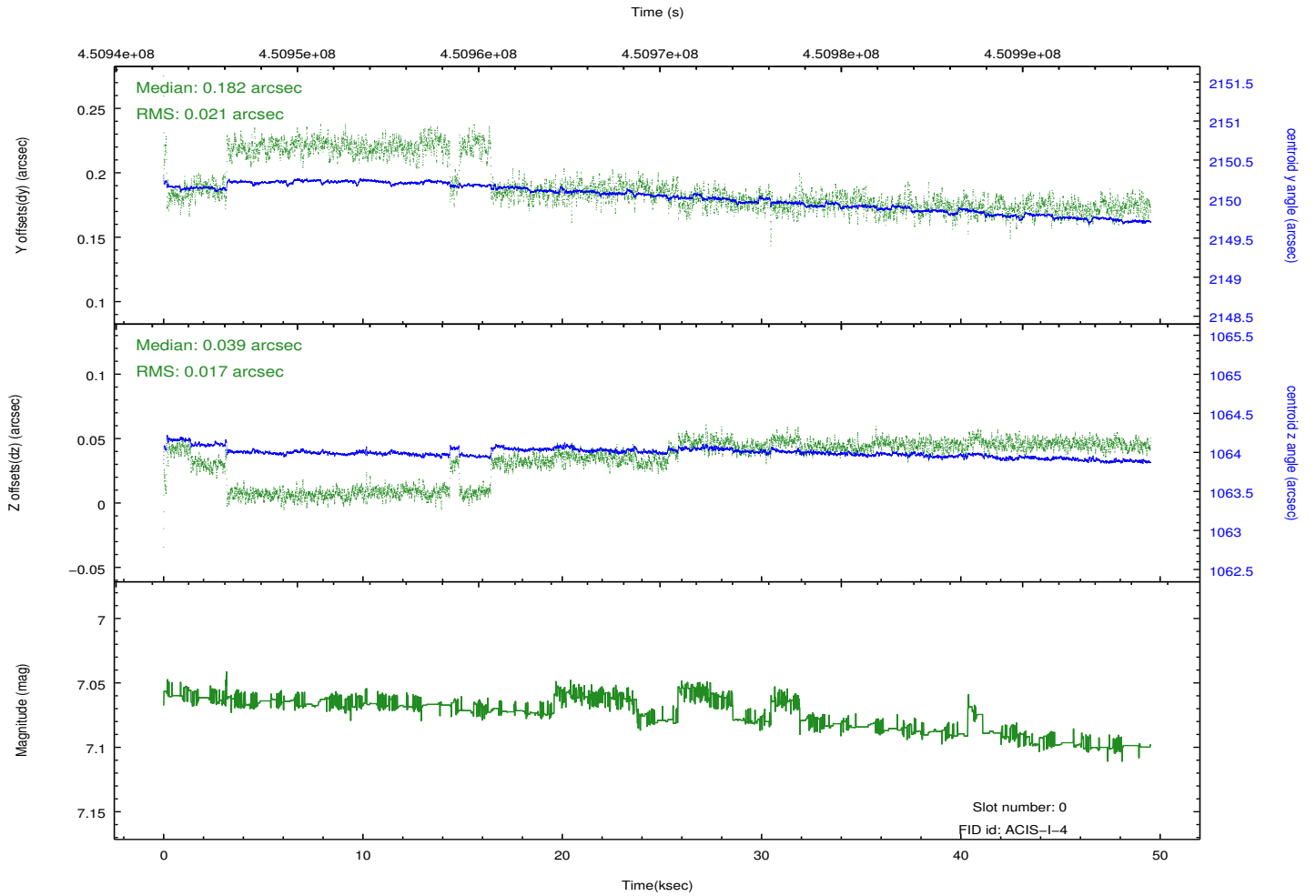
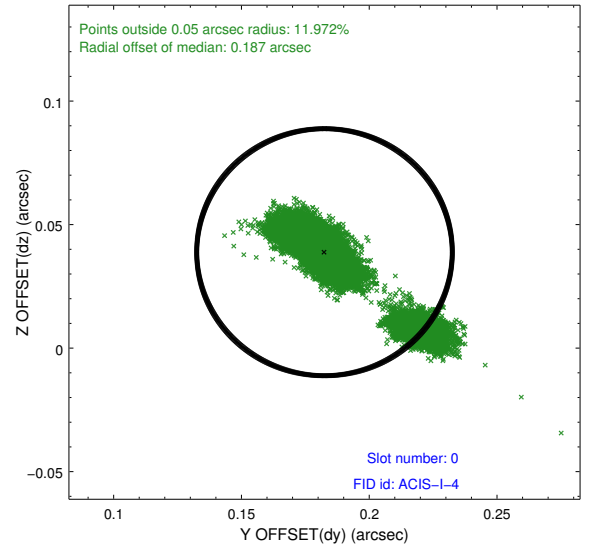
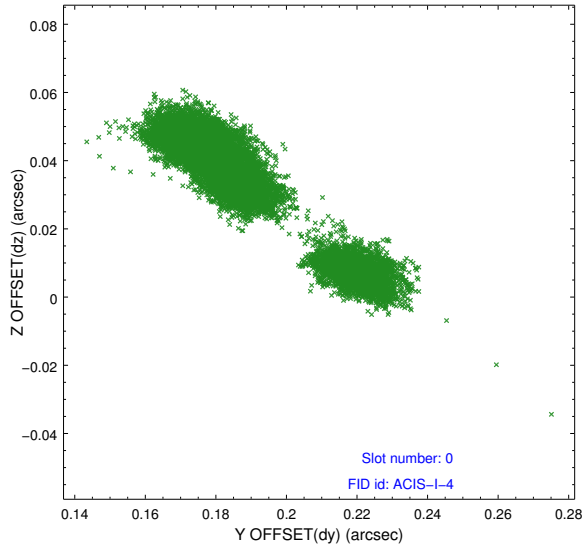


2.4.5 Slot 7

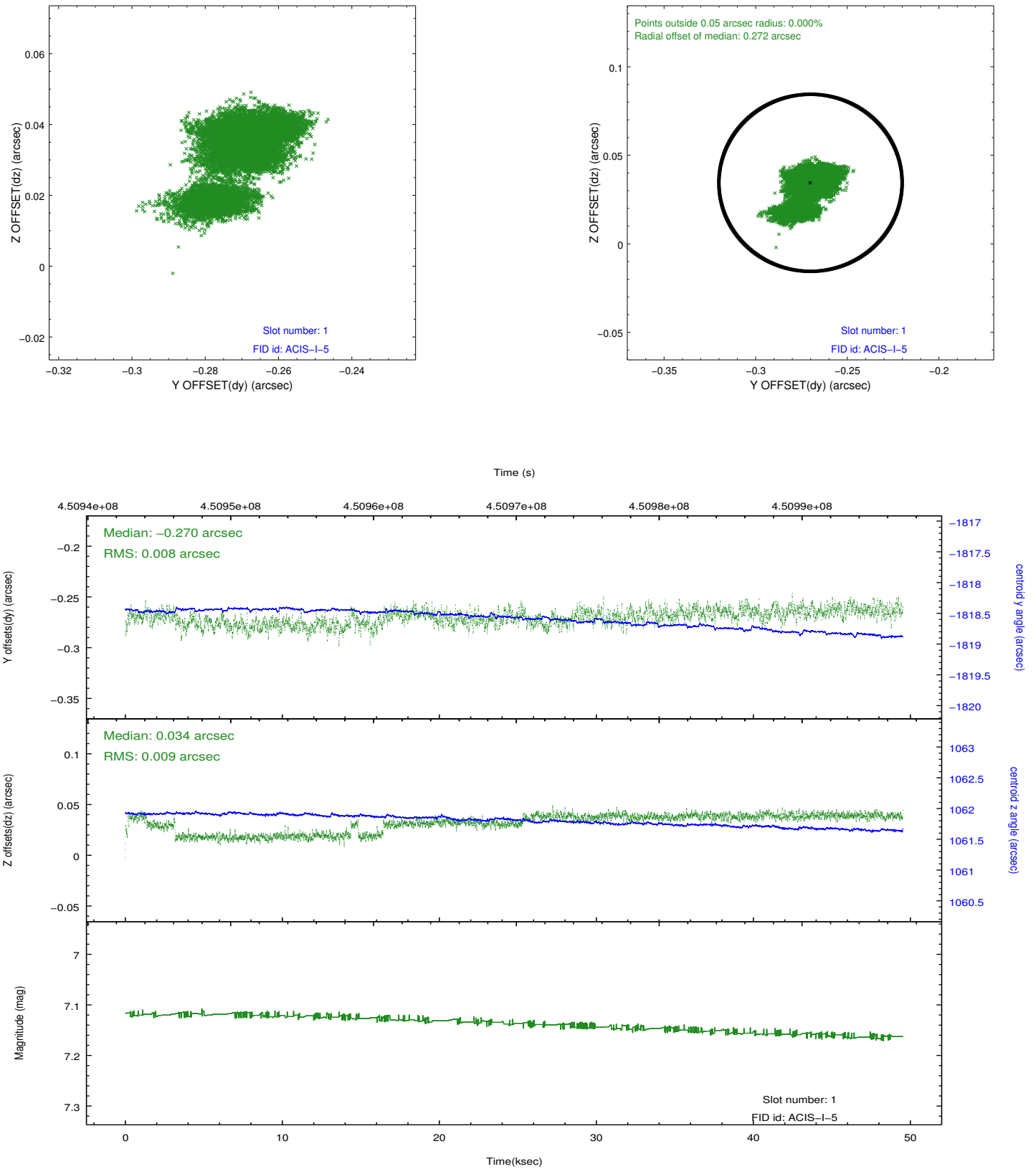


2.5 FID Slots

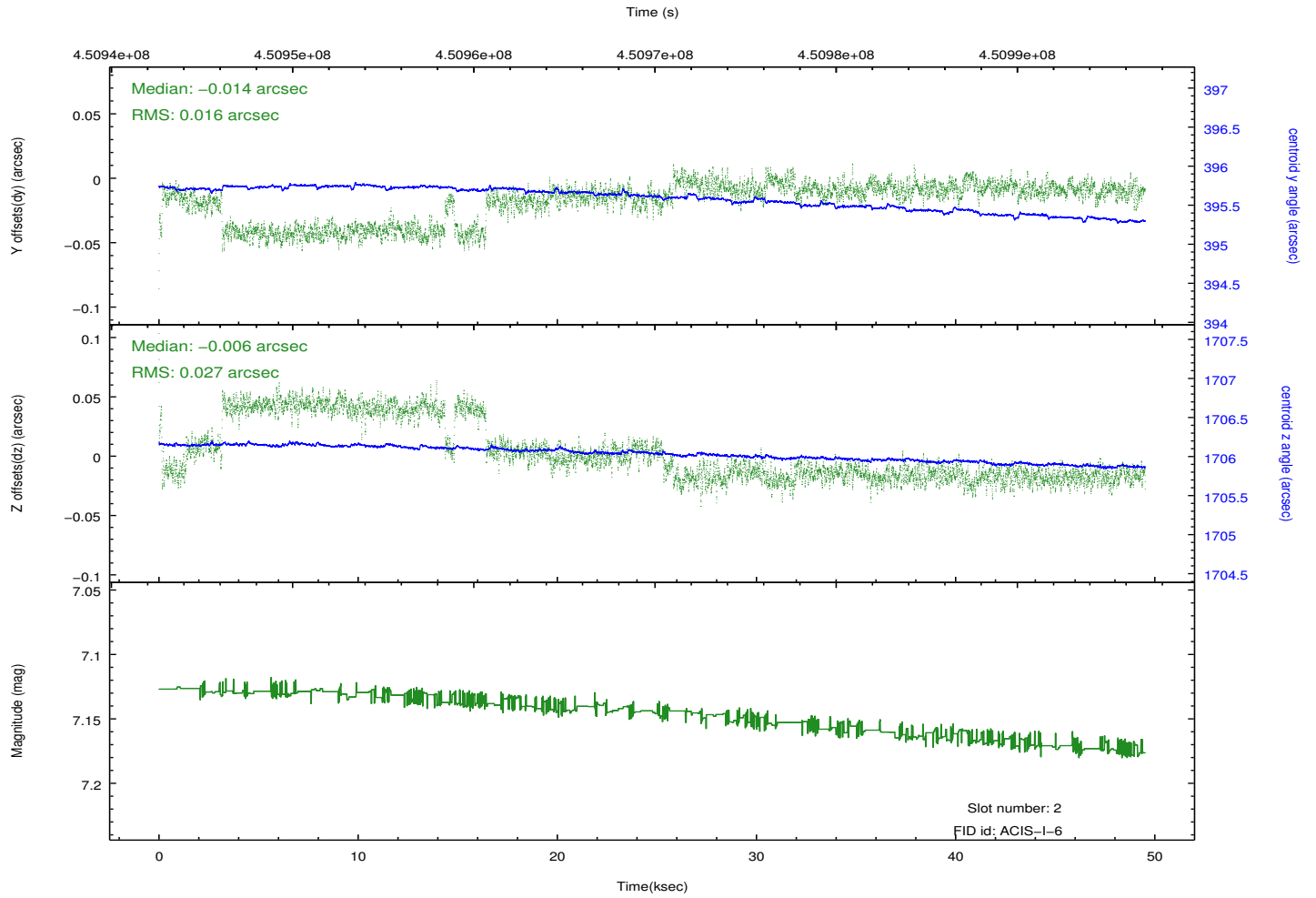
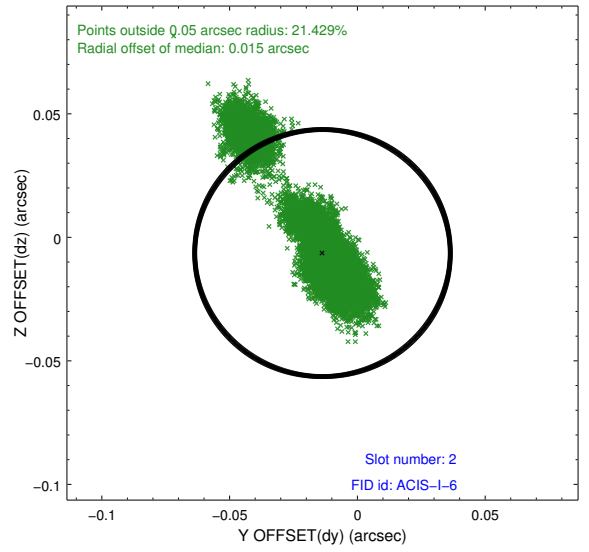
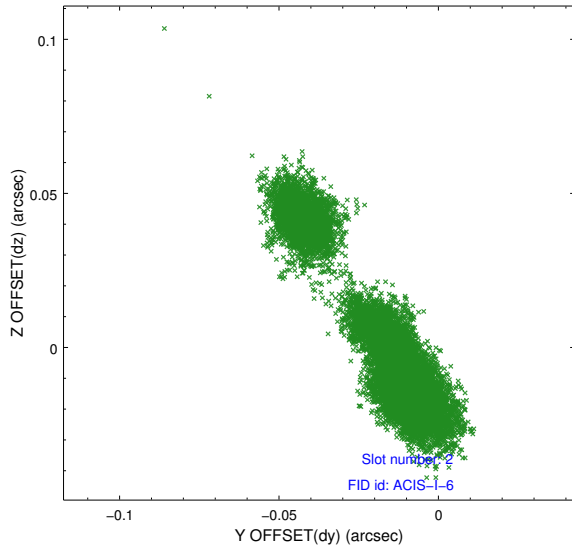
2.5.1 Slot 0



2.5.2 Slot 1



2.5.3 Slot 2



A Summary

A.1 Status

V&V Scientist	Jen Lauer
V&V Date (YYYY-MM-DD)	2012.04.17
V&V Edition	1
V&V Disposition and Status	OK
V&V Charge Time	49.154958419979

A.2 Comments