

V&V Reference Report

L2 ASCDS Version : 8.4.4

Observation 13747 - L2 Version 1
Chandra X-Ray Center

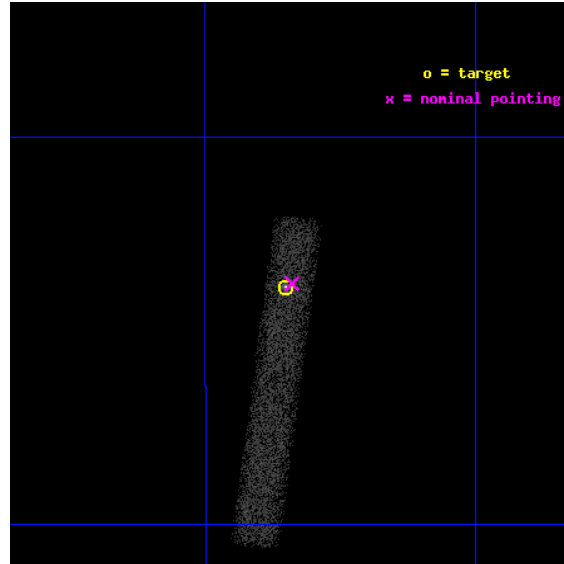
L2 Processing Date : May 25 2012

Contents

1	Front	2
2	OBI	3
2.1	OBI	3
2.1.1	Images	3
2.1.2	Bias	3
2.1.3	Parameters	4
2.1.4	Events	4
2.2	Compared Parameters	5
2.3	Aspect	6
2.4	Star Slots	9
2.4.1	Slot 3	9
2.4.2	Slot 4	10
2.4.3	Slot 5	11
2.4.4	Slot 6	12
2.4.5	Slot 7	13
2.5	FID Slots	14
2.5.1	Slot 0	14
2.5.2	Slot 1	15
2.5.3	Slot 2	16
A	Summary	17
A.1	Status	17
A.2	Comments	17

1 Front

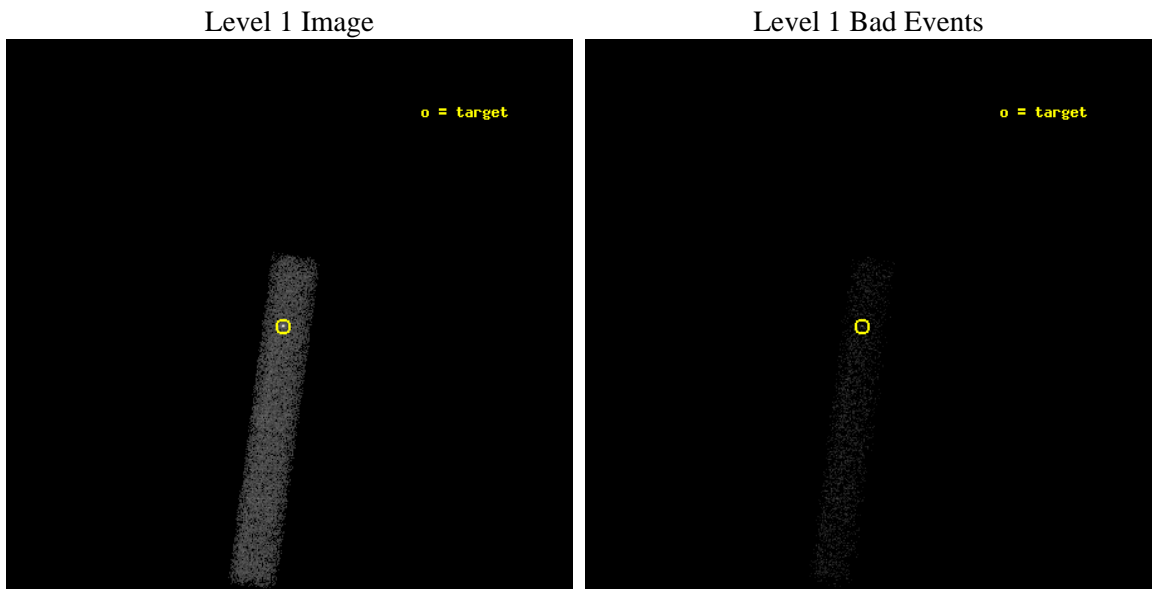
seq_num	501580	Sequence number
obs_id	13747	Observation id
title	Unveiling the nature of cyclic behavior in the period evolution of the Anomalous X ray Pulsar XTE j1810-197	Proposal title
observer	Dr. Federico Bernardini	Principal investigator
object	XTE J1810-197	Source name
dtcycle	0	
cycle	P	events from which exps? Prim/Second/Both
ra_targ	272.462917	Observer's specified target RA [deg]
dec_targ	-19.731083	Observer's specified target Dec [deg]
ra_nom	272.45999096027	Nominal RA [deg]
dec_nom	-19.729832113164	Nominal Dec [deg]
roll_nom	97.704466900555	Nominal Roll [deg]
revision	1	Processing version of data
ontime	20070.398803711	Sum of GTIs [s]
livetime	18202.792312453	Livetime [s]
ontime7	20070.398803711	Sum of GTIs [s]
l2events	13711	Number of level 2 events



2 OBI

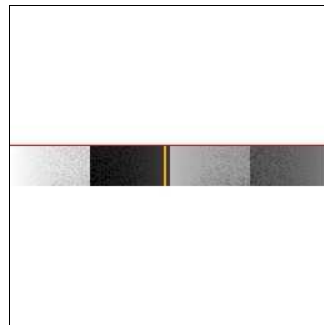
2.1 OBI

2.1.1 Images



2.1.2 Bias

Chip 7



2.1.3 Parameters

obi_num	0	Obi number	sched_exp_time	20000.000000	[s] Scheduled observation exposure time
ascdsver	8.4.4	Processing system revision	ontime	20070.398803711	Sum of GTIs [s]
caldbver	4.4.9	 	ontime7	20070.398803711	Sum of GTIs [s]
date	2012-05-25T05:55:32	Date and time of file creation	l1events	24552	Number of level 1 events
revision	1	Processing version of data			

2.1.4 Events

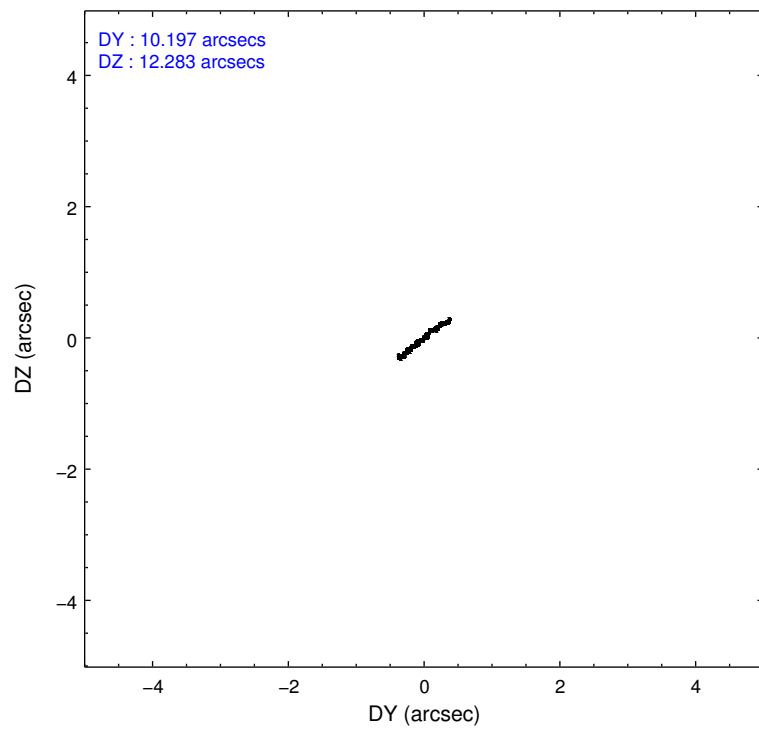
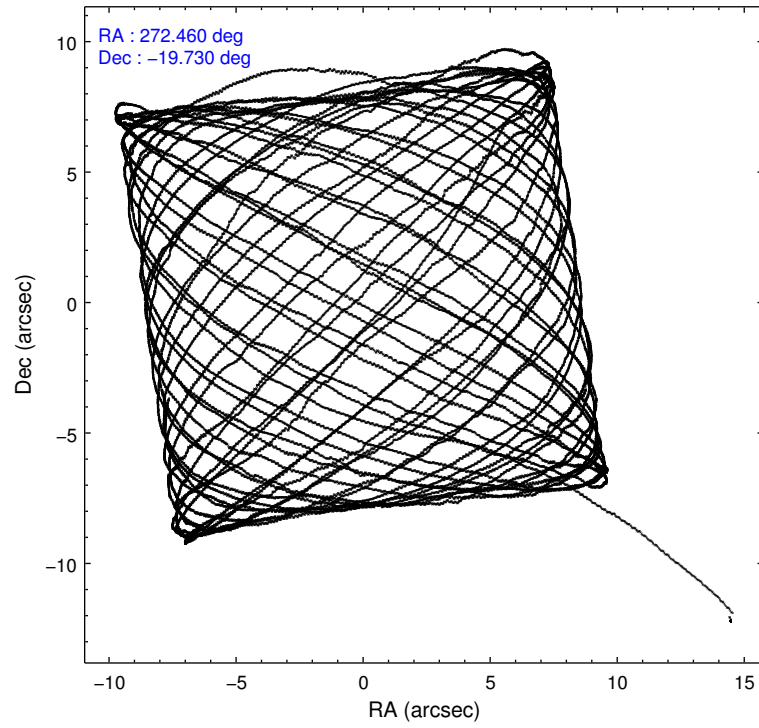
	ccd 7
level 1 events	24552
rejected events	10368
rejected %	42%

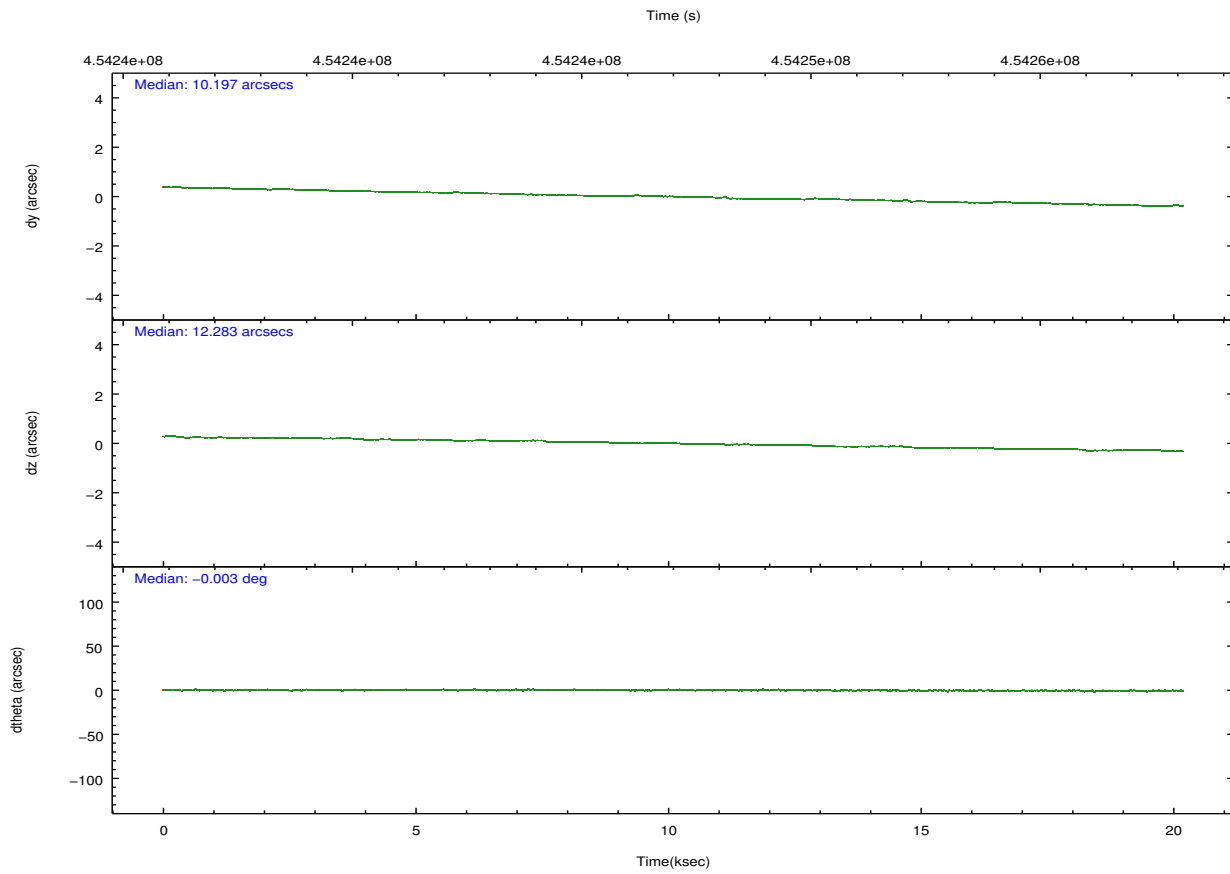
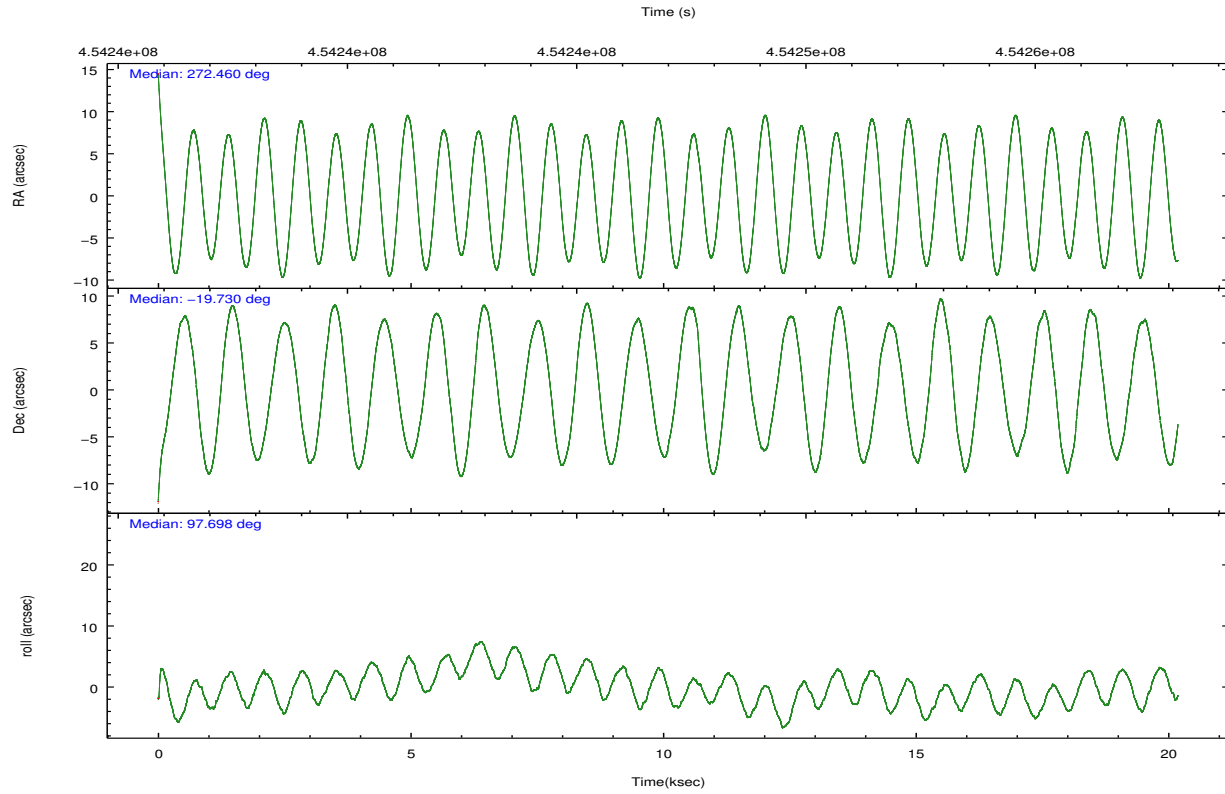
	ccd 7
grade 0 events	2191
	8%
grade 1 events	38
	0%
grade 2 events	3005
	12%
grade 3 events	1817
	7%
grade 4 events	1805
	7%
grade 5 events	2147
	8%
grade 6 events	5366
	21%
grade 7 events	8183
	33%

2.2 Compared Parameters

Parameter	Planned	Actual	Parameter	Planned	Actual
Instrument	ACIS	ACIS	Obspar format version number	7	7
Detector	ACIS-7	ACIS-7	Obspar file type	PREDICTED	ACTUAL
Grating	NONE	NONE	Obspar update status	NONE	UPDATED
Data mode	VFAINT	VFAINT	Number of optional ACIS chips dropped	0	0
Observation mode	POINTING	POINTING	On-chip summing requested	N	N
[deg] Pointing RA	272.478074	272.4599909602696	Subarray requested	CUSTOM	1/8
[deg] Pointing Dec	-19.751219	-19.72983211316443	Subarray start row	449	449
[deg] Pointing Roll	97.553954	97.70446690055496	Subarray row count	128	128
[s] Window start time (MET)	452217666.184000	452217666.184000	Alternating exposures requested	N	N
[s] Window stop time (MET)	456624006.184000	456624006.184000	[s] Primary exposure time	0.000000	0.4
[mm] SIM focus pos	-0.684267	-0.6828225247311905			
[mm] SIM defocus	0	0.001444936568705701			
[mm] SIM translation stage pos	-190.132523	-190.1400660498719			
[mm] SIM translation stage offset	0	0.00754346686406393			
[s] Observation start time (MET)	454237076.184000	454235900.64428			
Observation start date	2012-05-24T08:56:50	2012-05-24T08:38:20			
[s] Observation end time (MET)	454257076.184000	454258014.50795			
Observation end date	2012-05-24T14:30:10	2012-05-24T14:46:54			
Read mode	TIMED	TIMED			

2.3 Aspect



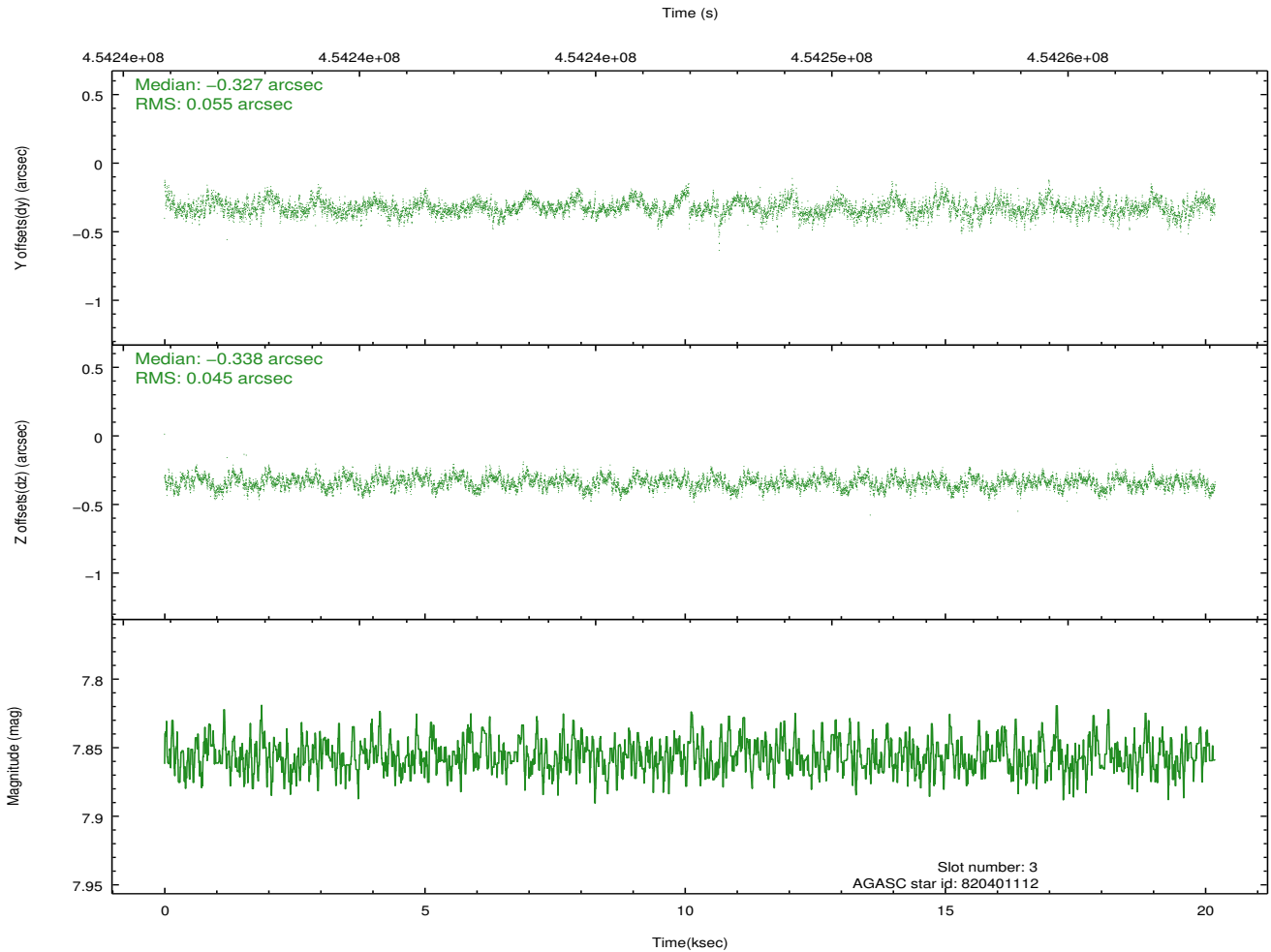
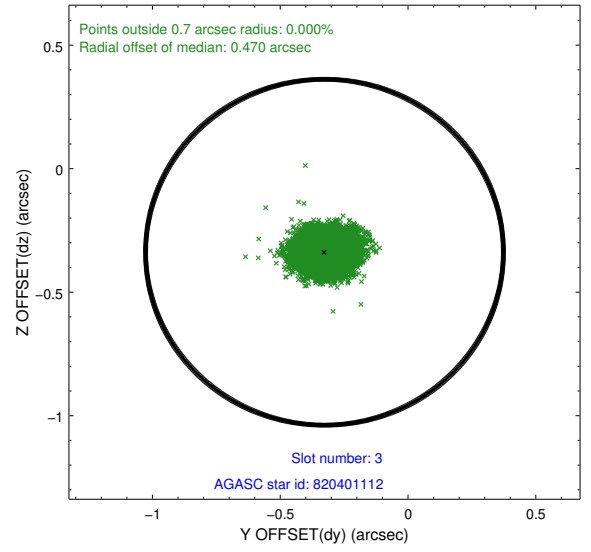
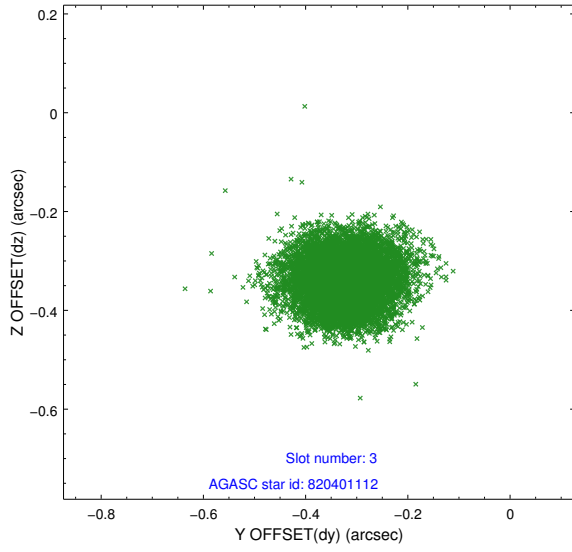


Slot Statistics

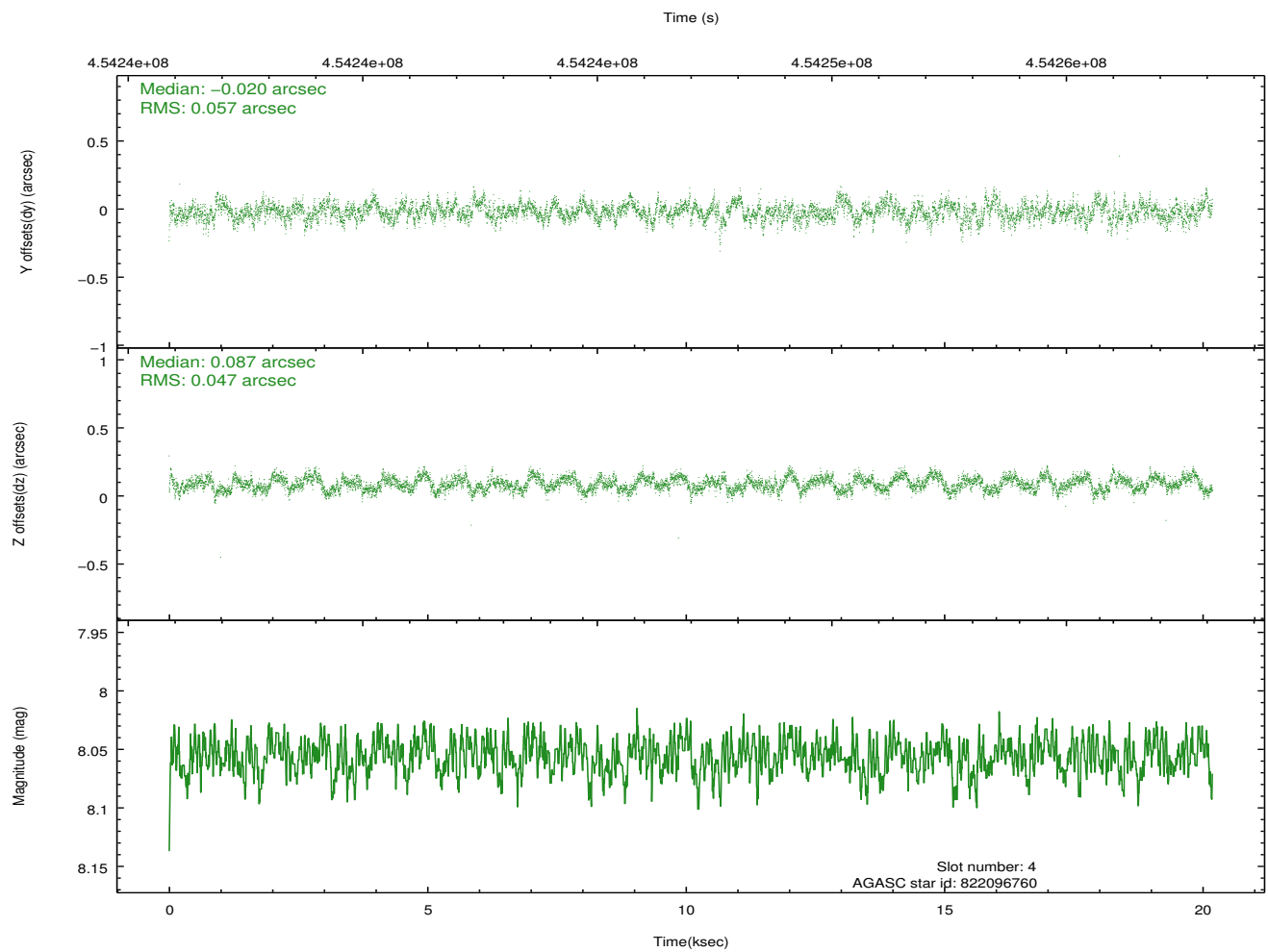
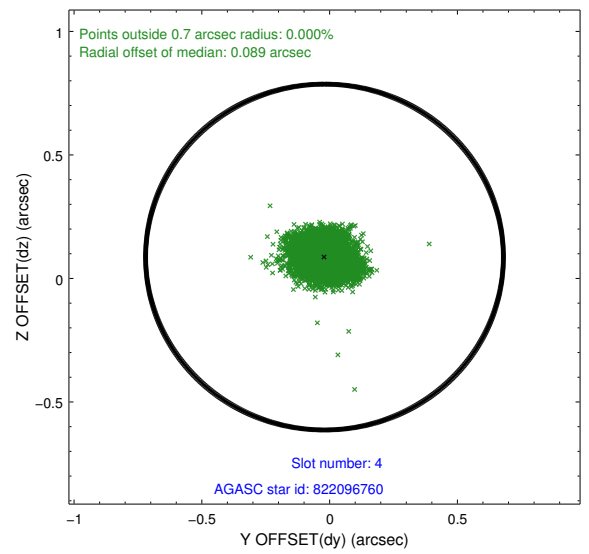
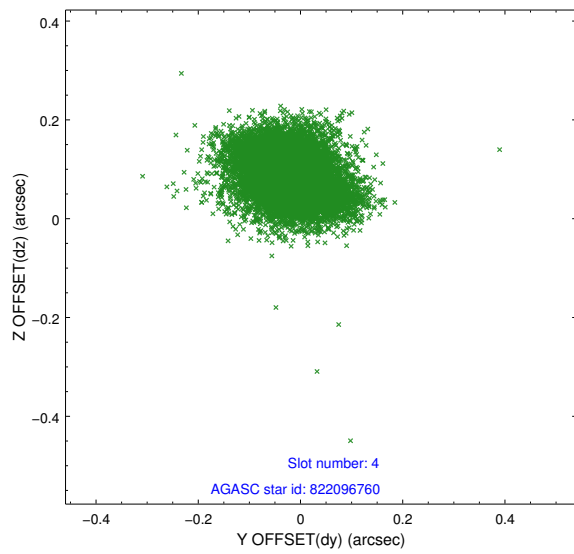
slot	status	id	mag	n_pts	med_dy	med_dz	dr1	dr2	ra	dec	mean_y	mean_z
0	FID	ACIS-S-2	6.97	4924	-0.063	-0.044	0.009	0.015	0.000000	0.000000	-763.12	-1733.61
1	FID	ACIS-S-4	7.06	4924	0.222	0.042	0.006	0.010	0.000000	0.000000	2150.39	174.71
2	FID	ACIS-S-5	7.09	4924	-0.190	0.011	0.009	0.013	0.000000	0.000000	-1815.82	168.64
3	GUIDE	820401112	7.86	9848	-0.327	-0.338	0.075	0.122	271.884761	-19.293988	1893.14	1782.57
4	GUIDE	822096760	8.06	9848	-0.020	0.087	0.078	0.128	272.830526	-19.438690	957.46	-1333.41
5	GUIDE	822101160	8.45	9842	0.079	-0.095	0.069	0.117	272.245889	-20.018987	-852.50	905.12
6	GUIDE	822103320	9.02	9820	0.132	0.341	0.119	0.193	273.198291	-20.140480	-1713.81	-2227.92
7	GUIDE	822085152	9.01	9829	0.137	0.009	0.113	0.185	272.974056	-19.057083	2253.49	-2001.20

2.4 Star Slots

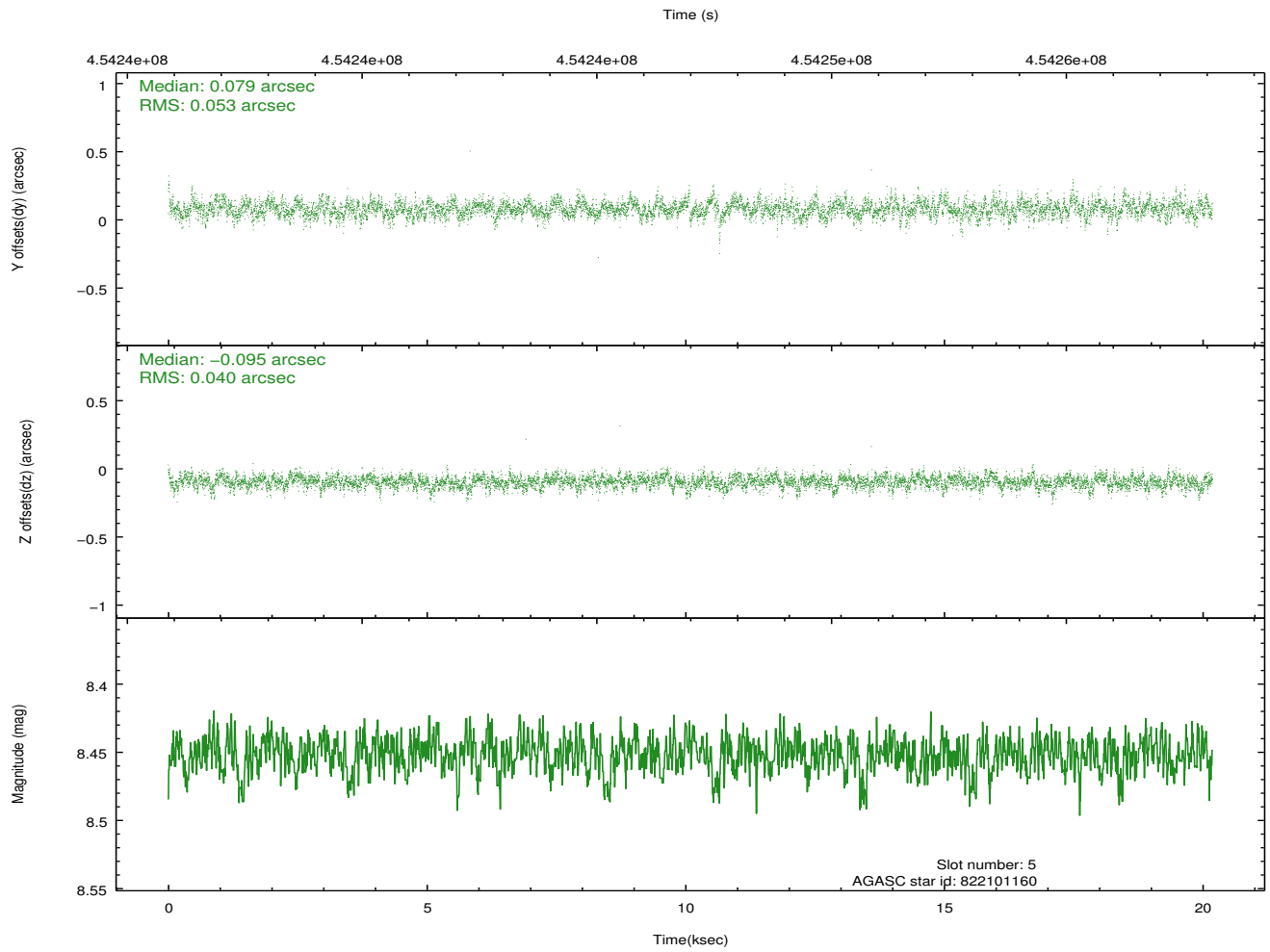
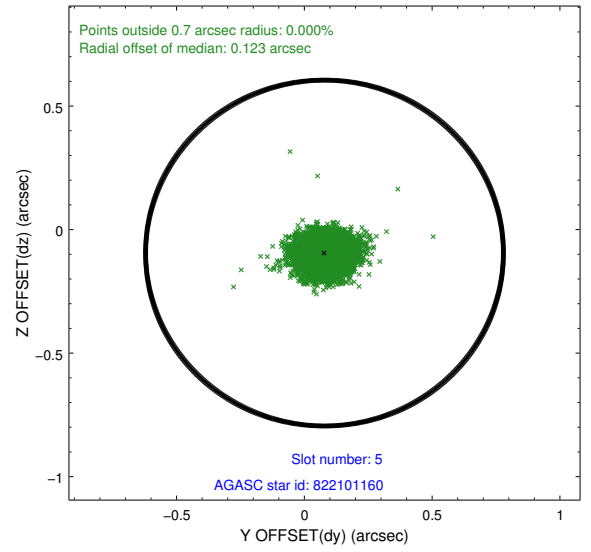
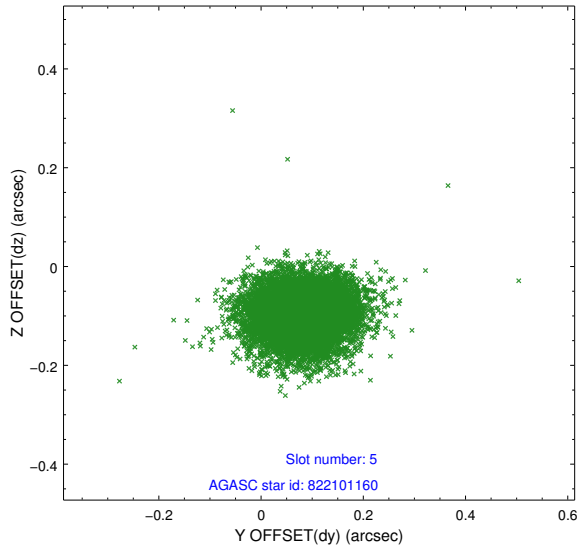
2.4.1 Slot 3



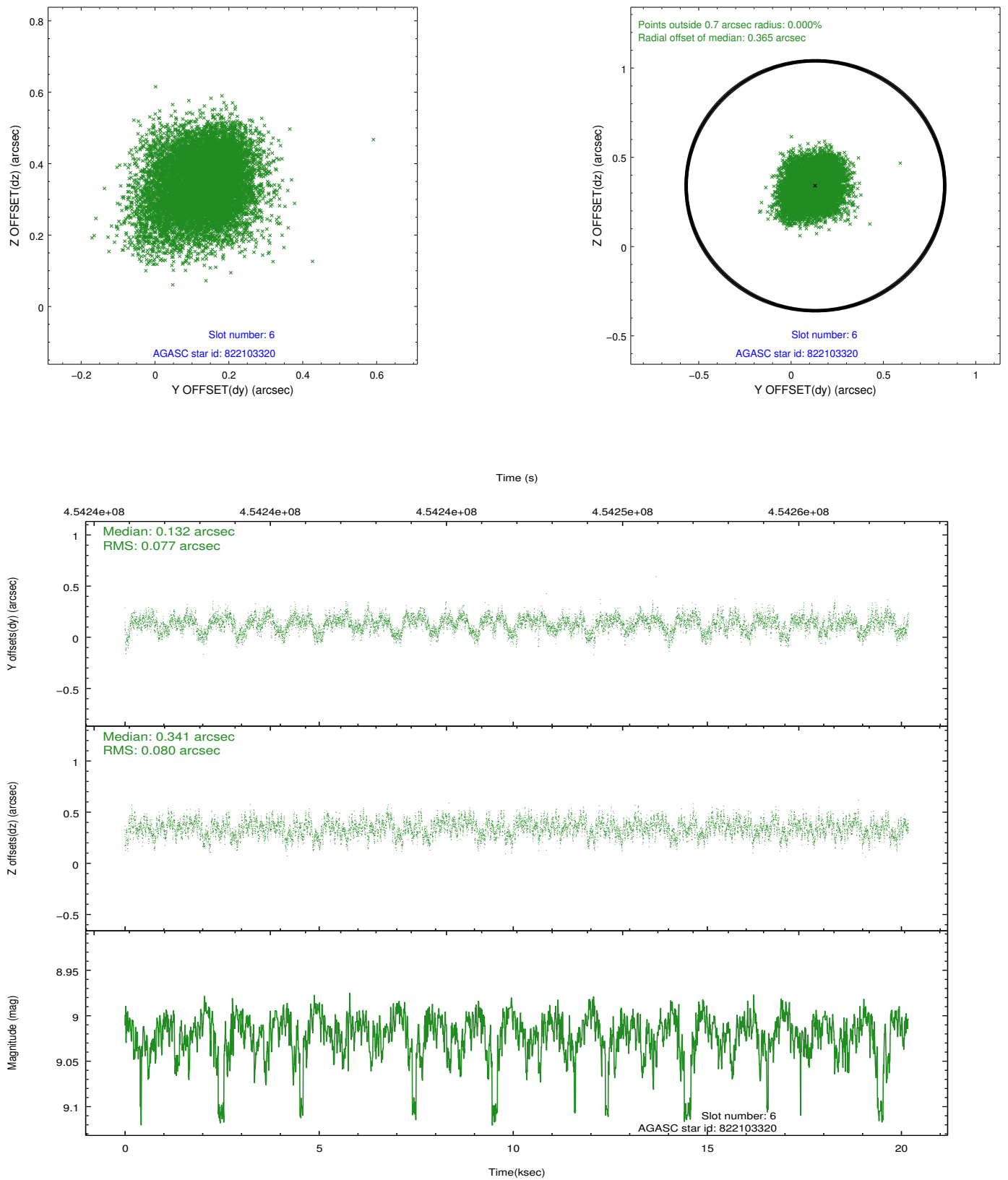
2.4.2 Slot 4



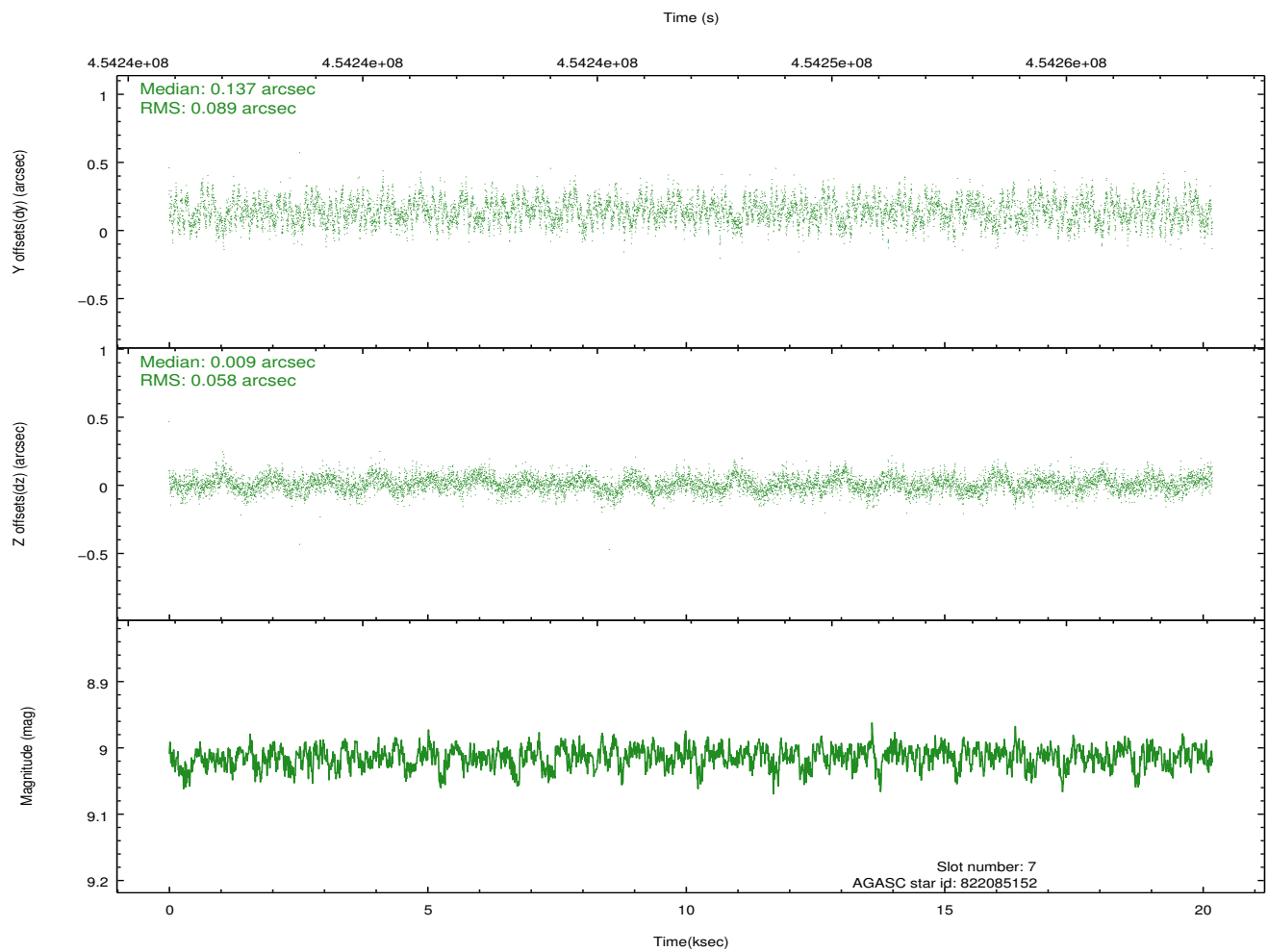
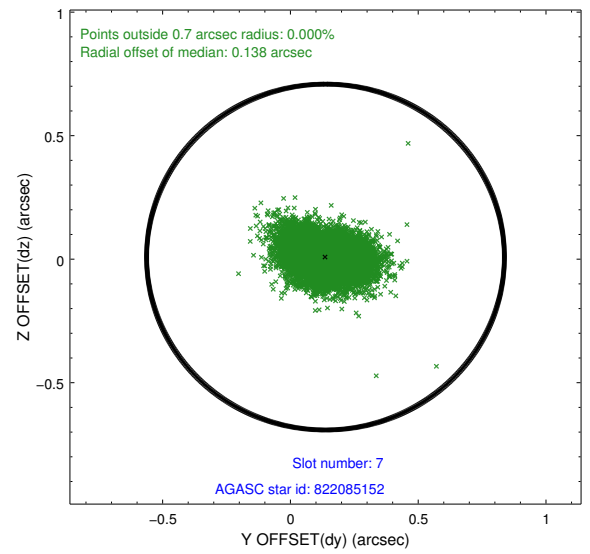
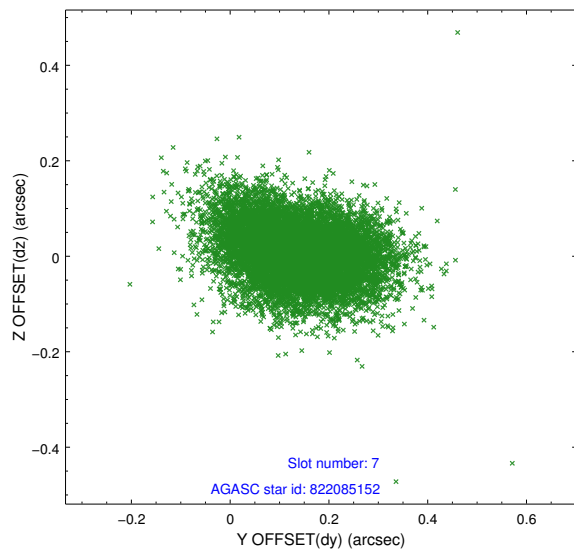
2.4.3 Slot 5



2.4.4 Slot 6

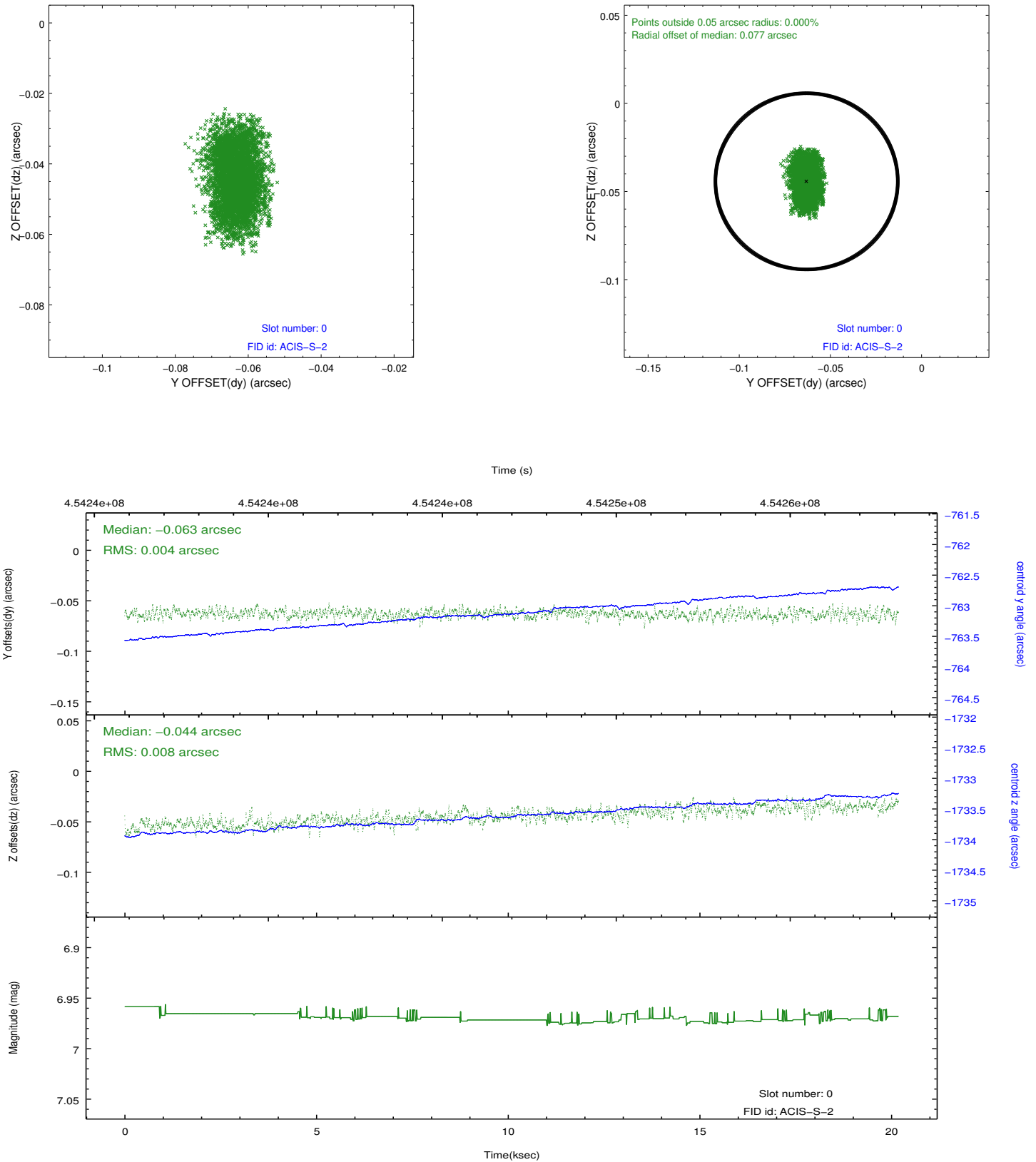


2.4.5 Slot 7

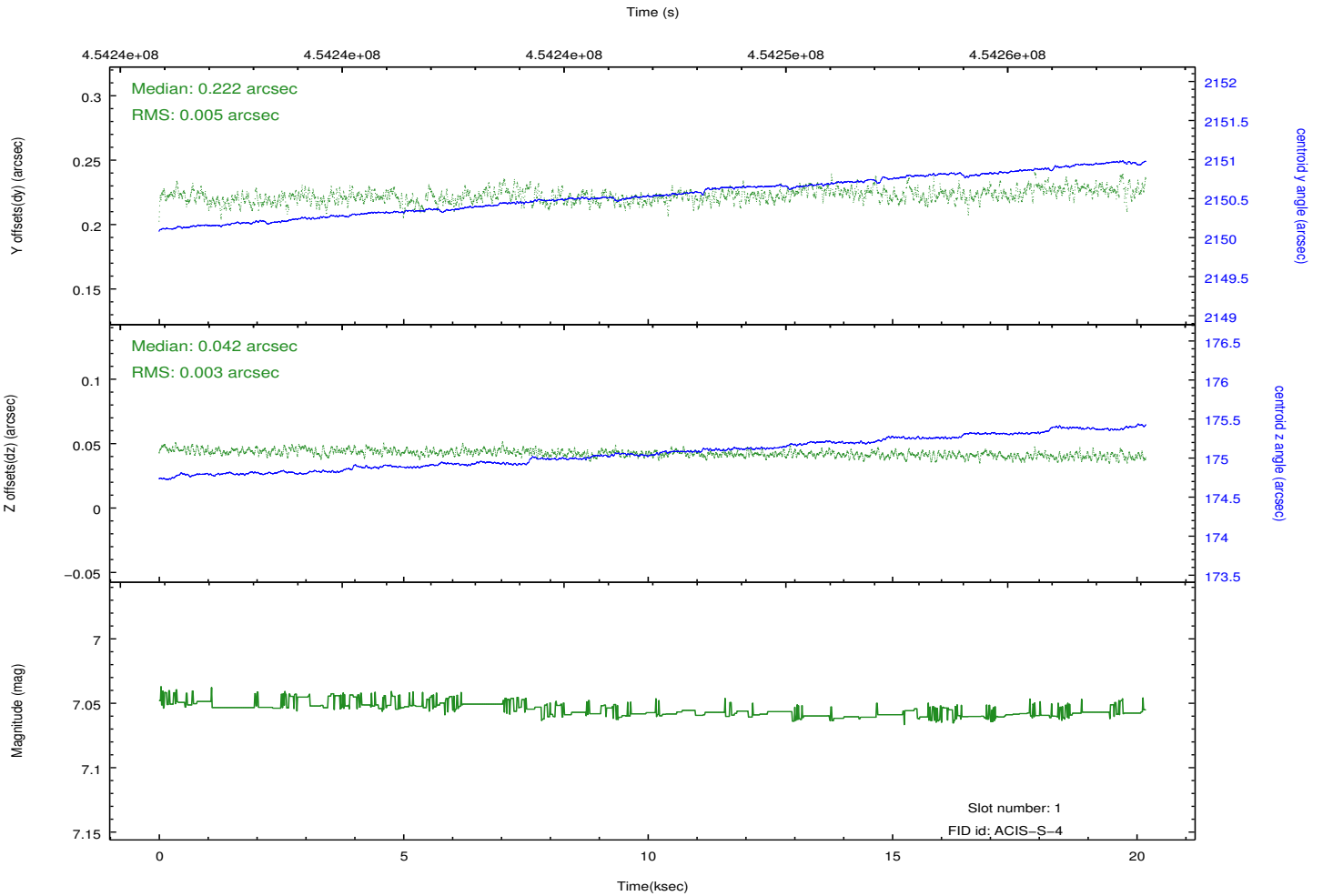
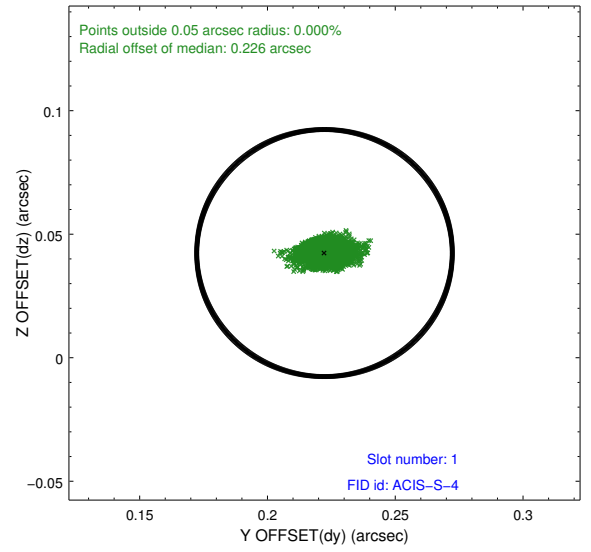
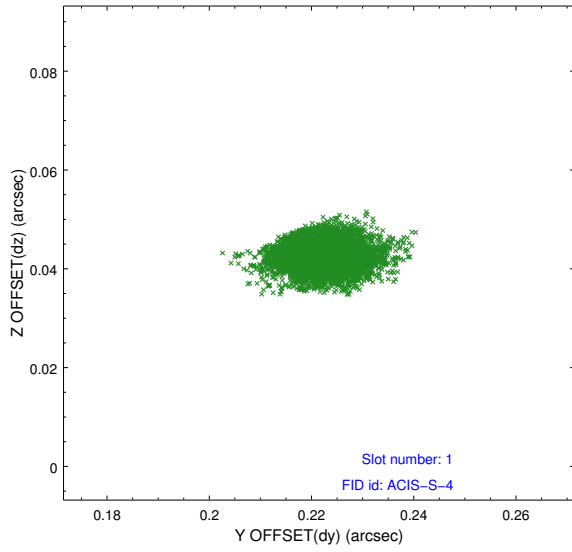


2.5 FID Slots

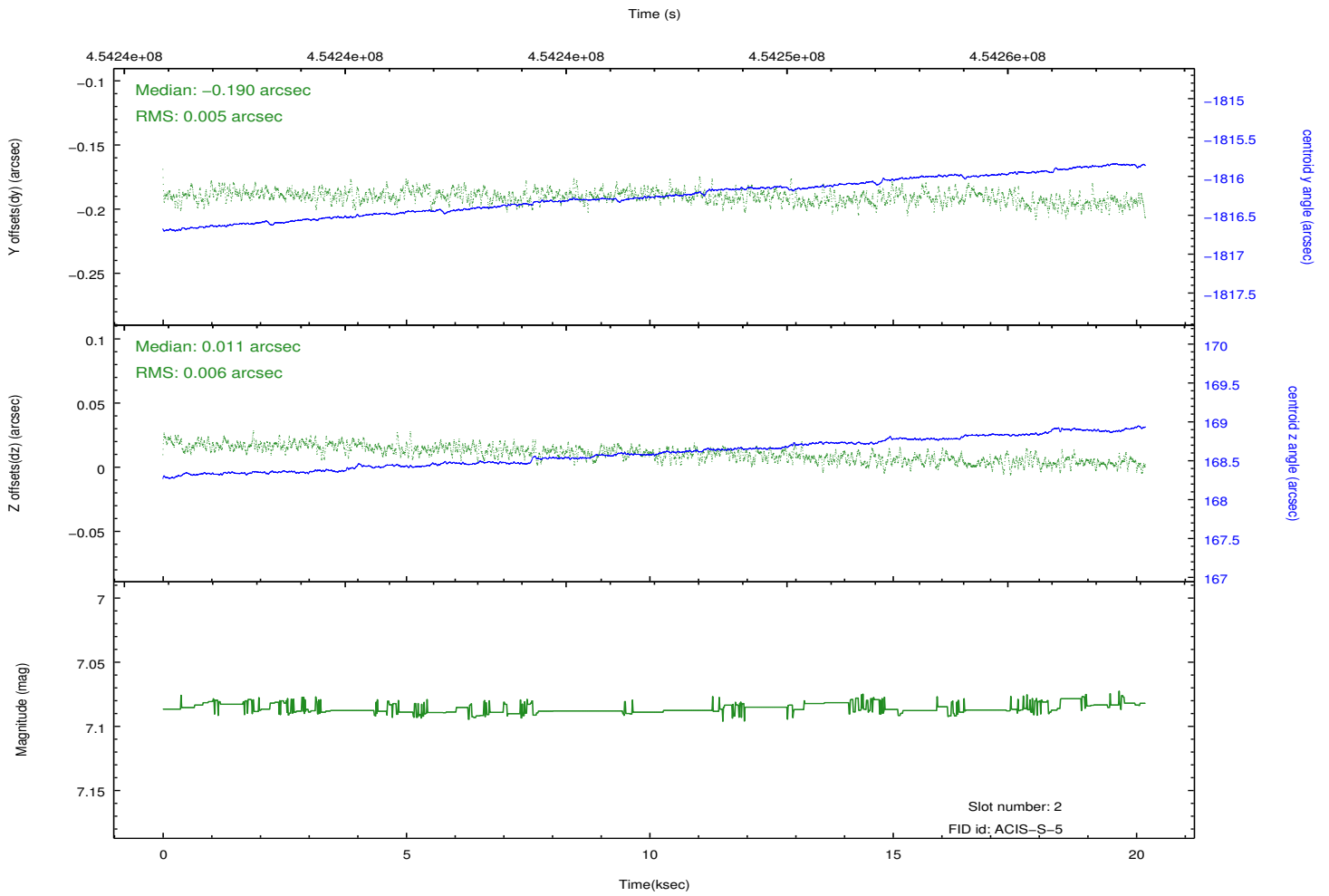
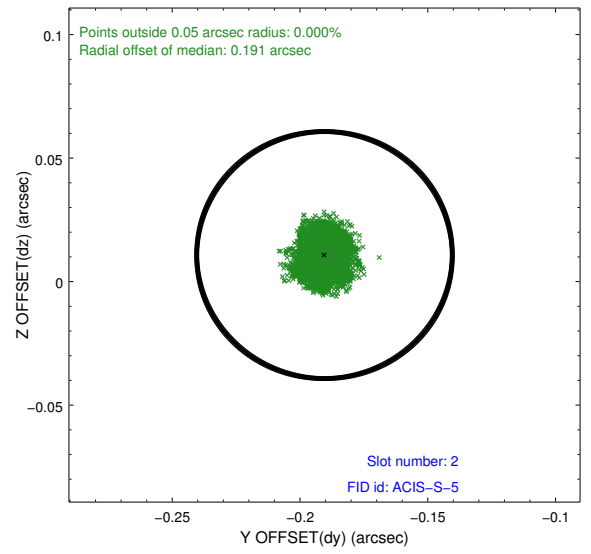
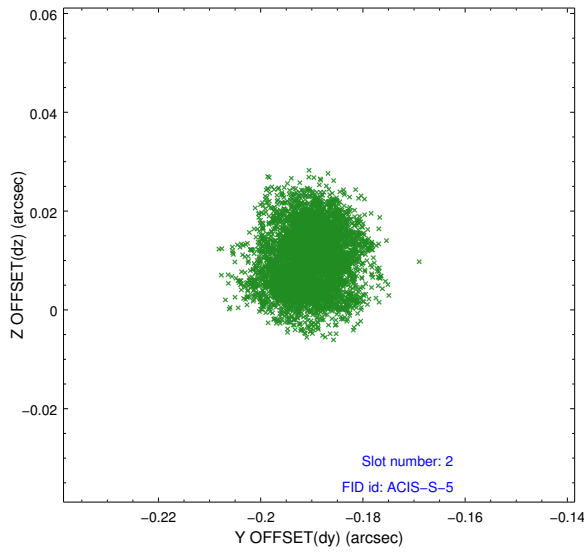
2.5.1 Slot 0



2.5.2 Slot 1



2.5.3 Slot 2



A Summary

A.1 Status

V&V Scientist	Joy Nichols
V&V Date (YYYY-MM-DD)	2012.05.25
V&V Edition	1
V&V Disposition and Status	OK
V&V Charge Time	20.070398803711

A.2 Comments