

V&V Reference Report

L2 ASCDS Version : 8.4.5

Observation 13997 - L2 Version 2
Chandra X-Ray Center

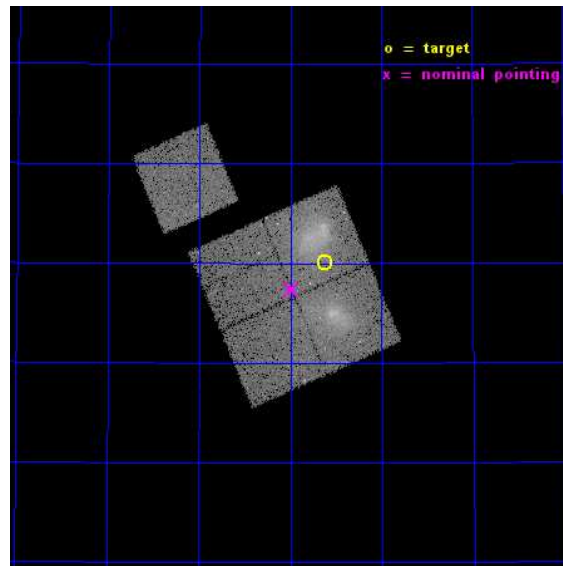
L2 Processing Date : Nov 27 2014

Contents

1	Front	2
2	OBI	3
2.1	OBI	3
2.1.1	Images	3
2.1.2	Bias	3
2.1.3	Parameters	4
2.1.4	Events	4
2.2	Compared Parameters	5
2.3	Aspect	6
2.4	Star Slots	9
2.4.1	Slot 3	9
2.4.2	Slot 4	10
2.4.3	Slot 5	11
2.4.4	Slot 6	12
2.4.5	Slot 7	13
2.5	FID Slots	14
2.5.1	Slot 0	14
2.5.2	Slot 1	15
2.5.3	Slot 2	16
A	Summary	17
A.1	Status	17
A.2	Comments	17

1 Front

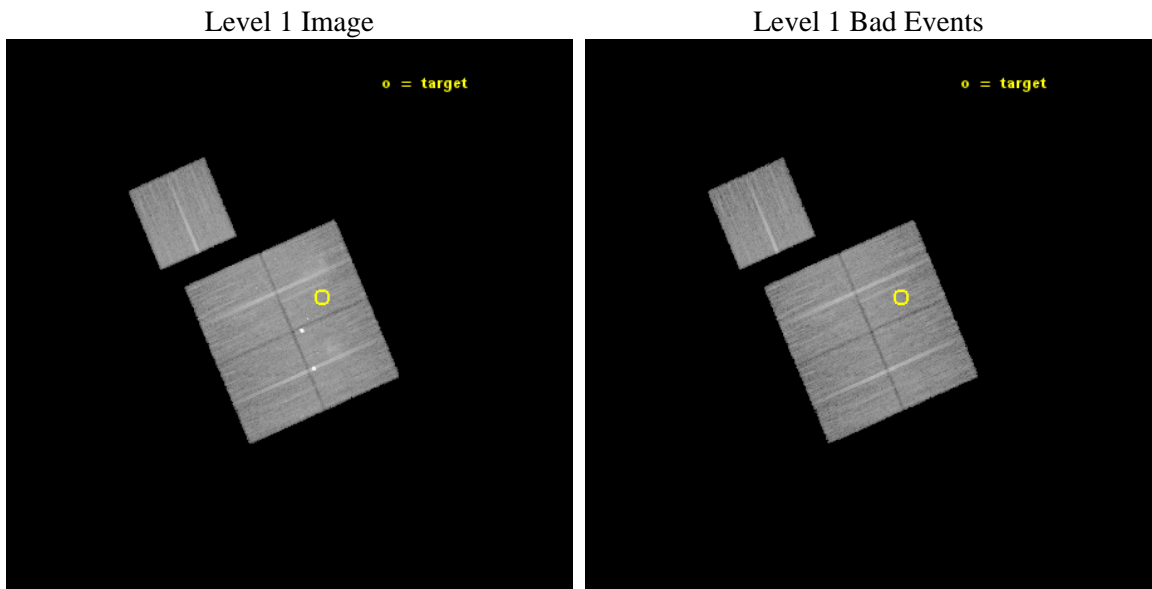
seq_num	801177	Sequence number
obs_id	13997	Observation id
title	The Merging Double Cluster Abell 1758	Proposal title
observer	Dr. Laurence David	Principal investigator
object	Abell 1758	Source name
dtcycle	0	
cycle	P	events from which exps? Prim/Second/Both
ra_targ	203.15625	Observer's specified target RA [deg]
dec_targ	50.501806	Observer's specified target Dec [deg]
ra_nom	203.24705224874	Nominal RA [deg]
dec_nom	50.456559798839	Nominal Dec [deg]
roll_nom	336.63865811746	Nominal Roll [deg]
revision	2	Processing version of data
ontime	28002.300215364	Sum of GTIs [s]
livetime	27636.429548056	Livetime [s]
ontime0	28002.277054548	Sum of GTIs [s]
ontime1	28002.300215364	Sum of GTIs [s]
ontime2	27999.159255028	Sum of GTIs [s]
ontime3	28002.300215364	Sum of GTIs [s]
ontime6	28002.236014545	Sum of GTIs [s]
l2events	90114	Number of level 2 events



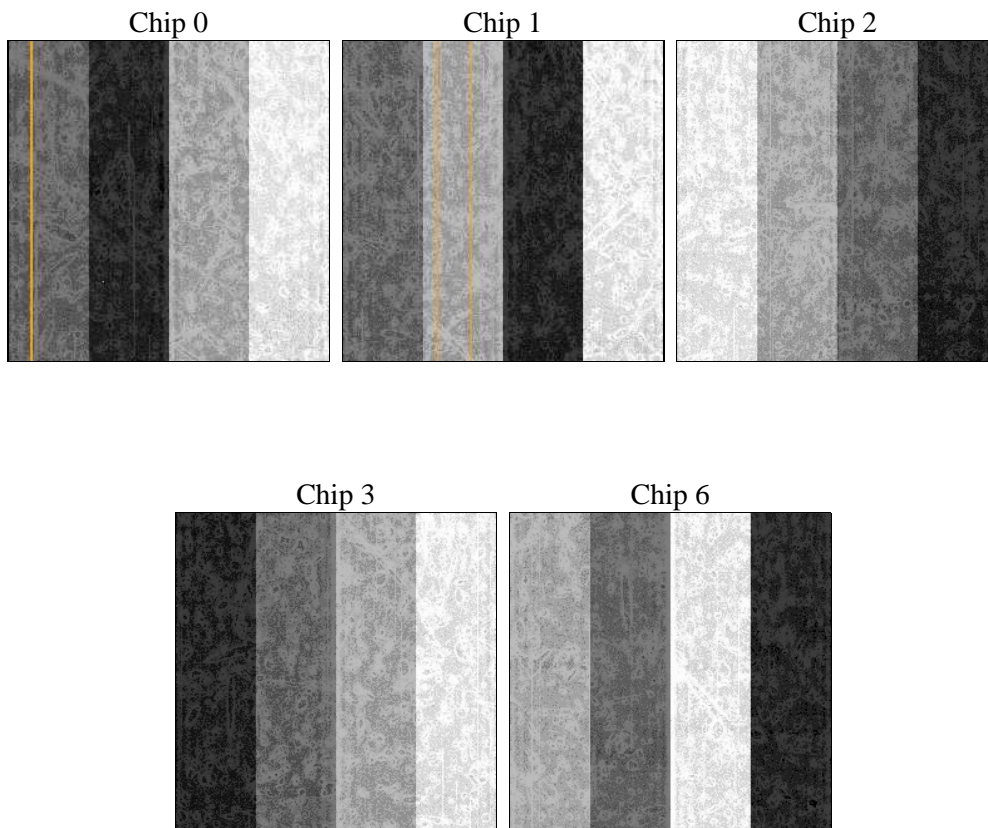
2 OBI

2.1 OBI

2.1.1 Images



2.1.2 Bias



2.1.3 Parameters

obi_num	0	Obi number	sched_exp_time	27920.215000	[s] Scheduled observation exposure time
ascdsver	10.3	Processing system revision	ontime	28002.300215364	Sum of GTIs [s]
caldbver	4.6.4	 	ontime0	28002.277054548	Sum of GTIs [s]
date	2014-11-27T16:47:10	Date and time of file creation	ontime1	28002.300215364	Sum of GTIs [s]
revision	2	Processing version of data	ontime2	27999.159255028	Sum of GTIs [s]
			ontime3	28002.300215364	Sum of GTIs [s]
			ontime6	28002.236014545	Sum of GTIs [s]
			l1events	711567	Number of level 1 events

2.1.4 Events

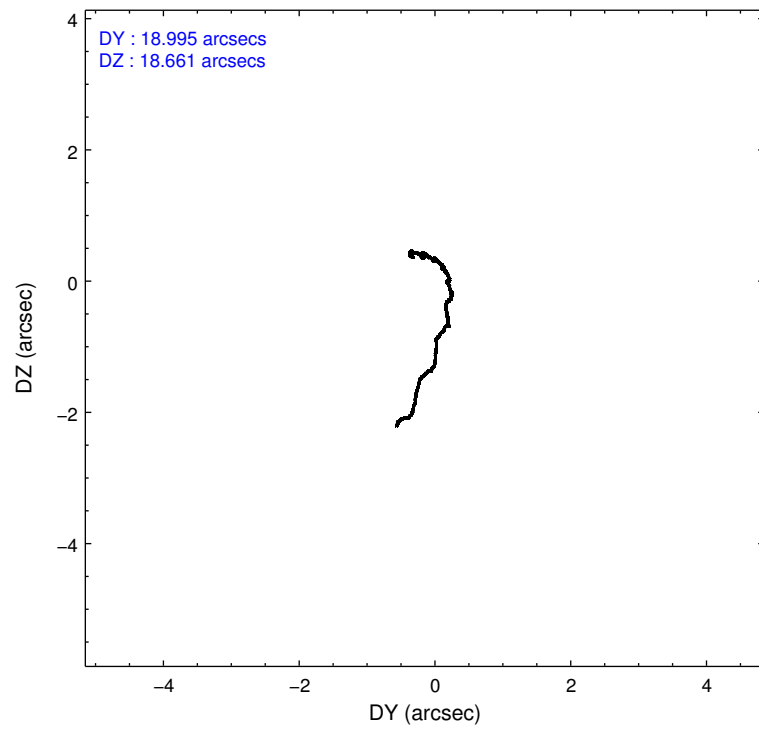
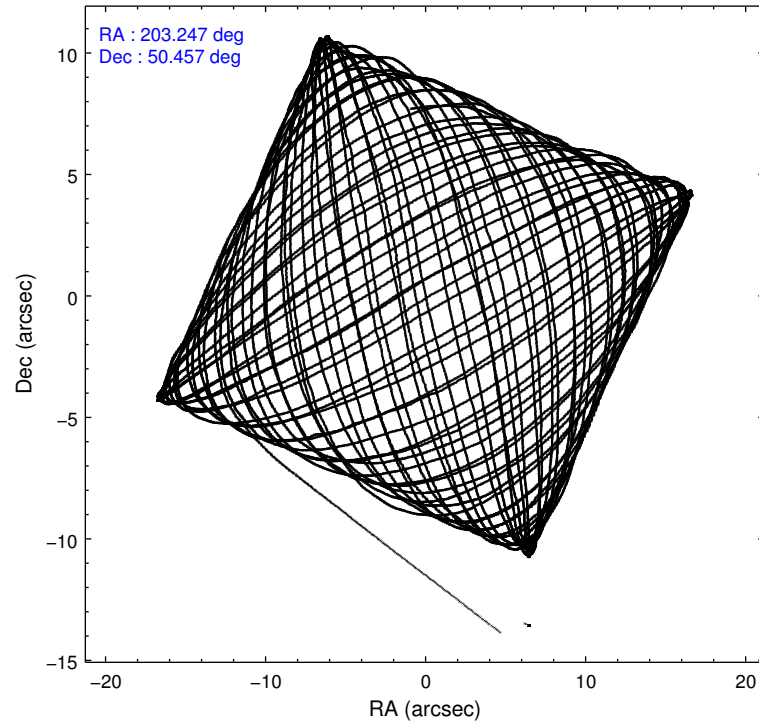
	ccd 0	ccd 1	ccd 2	ccd 3	ccd 6
level 1 events	124419	153775	143109	152747	137517
rejected events	107449	111847	126804	123203	120969
rejected %	86%	72%	88%	80%	87%

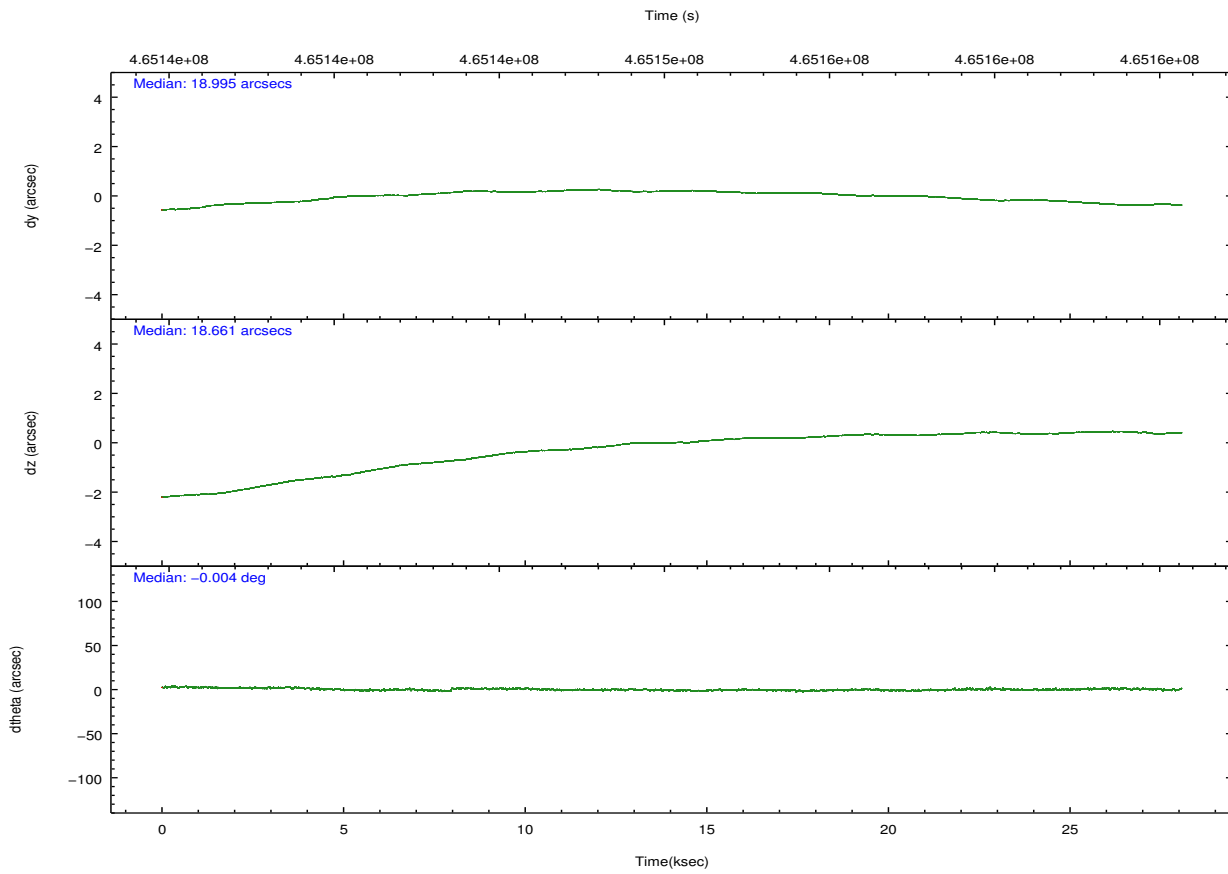
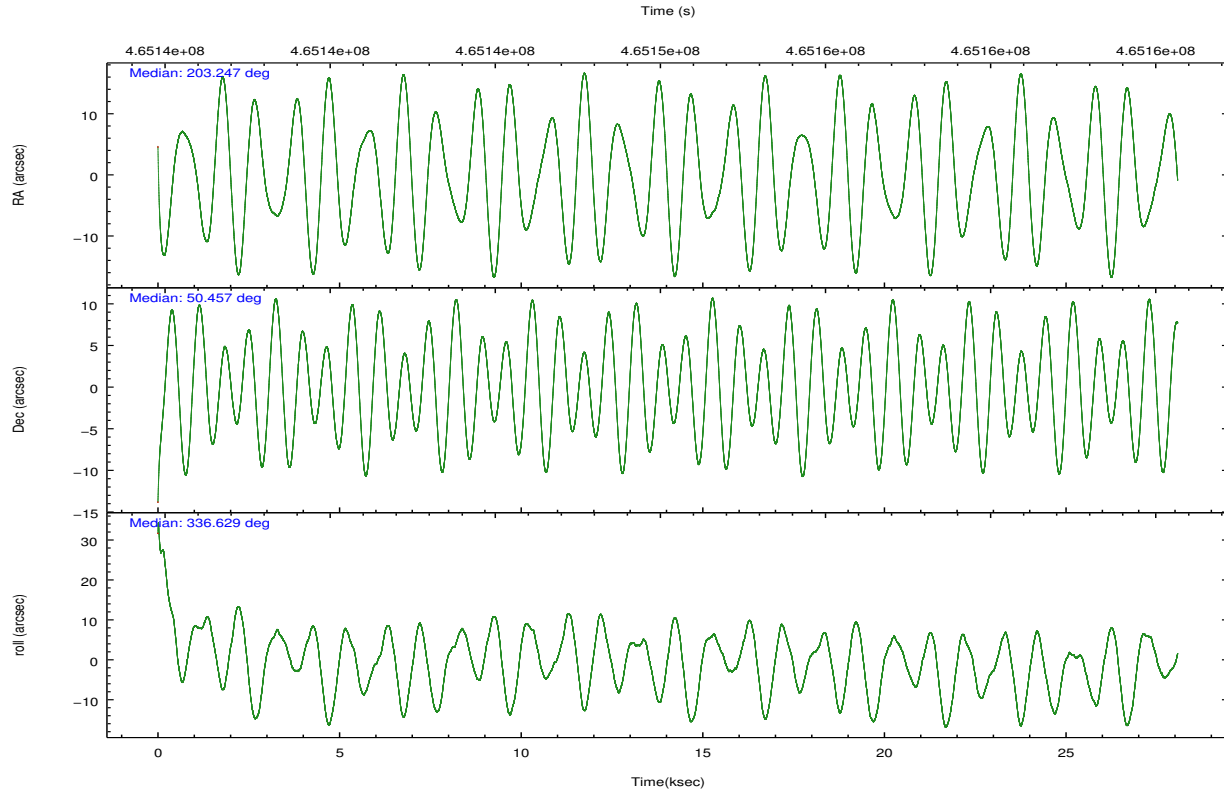
	ccd 0	ccd 1	ccd 2	ccd 3	ccd 6
grade 0 events	6323	29049	6117	17273	5916
	5%	18%	4%	11%	4%
grade 1 events	86	188	89	123	54
	0%	0%	0%	0%	0%
grade 2 events	4264	4989	4053	4892	3785
	3%	3%	2%	3%	2%
grade 3 events	1710	2039	1572	1993	1678
	1%	1%	1%	1%	1%
grade 4 events	1569	2051	1636	1989	1698
	1%	1%	1%	1%	1%
grade 5 events	5519	6063	5244	6151	5942
	4%	3%	3%	4%	4%
grade 6 events	3105	3808	2930	3406	3475
	2%	2%	2%	2%	2%
grade 7 events	101843	105588	121468	116920	114969
	81%	68%	84%	76%	83%

2.2 Compared Parameters

Parameter	Planned	Actual	Parameter	Planned	Actual
Instrument	ACIS	ACIS	Obspar format version number	7	7
Detector	ACIS-01236	ACIS-01236	Obspar file type	PREDICTED	ACTUAL
Grating	NONE	NONE	Obspar update status	NONE	UPDATED
Data mode	VFAINT	VFAINT	Number of optional ACIS chips dropped	0	0
Observation mode	POINTING	POINTING	On-chip summing requested	N	N
[deg] Pointing RA	203.204175	203.2470522487365	Subarray requested	NONE	NONE
[deg] Pointing Dec	50.453272	50.45655979883927	Alternating exposures requested	N	N
[deg] Pointing Roll	336.463027	336.638658117458	[s] Primary exposure time	0.000000	3.1
[mm] SIM focus pos	-0.782348	-0.7809083437167272			
[mm] SIM defocus	0	0.001439871863259334			
[mm] SIM translation stage pos	-233.592463	-233.5874344608287			
[mm] SIM translation stage offset	0	-0.005018542100998502			
[s] Observation start time (MET)	465136345.184000	465135265.3727			
Observation start date	2012-09-27T12:31:18	2012-09-27T12:14:25			
[s] Observation end time (MET)	465164265.184000	465164501.96176			
Observation end date	2012-09-27T20:16:38	2012-09-27T20:21:41			
Read mode	TIMED	TIMED			

2.3 Aspect





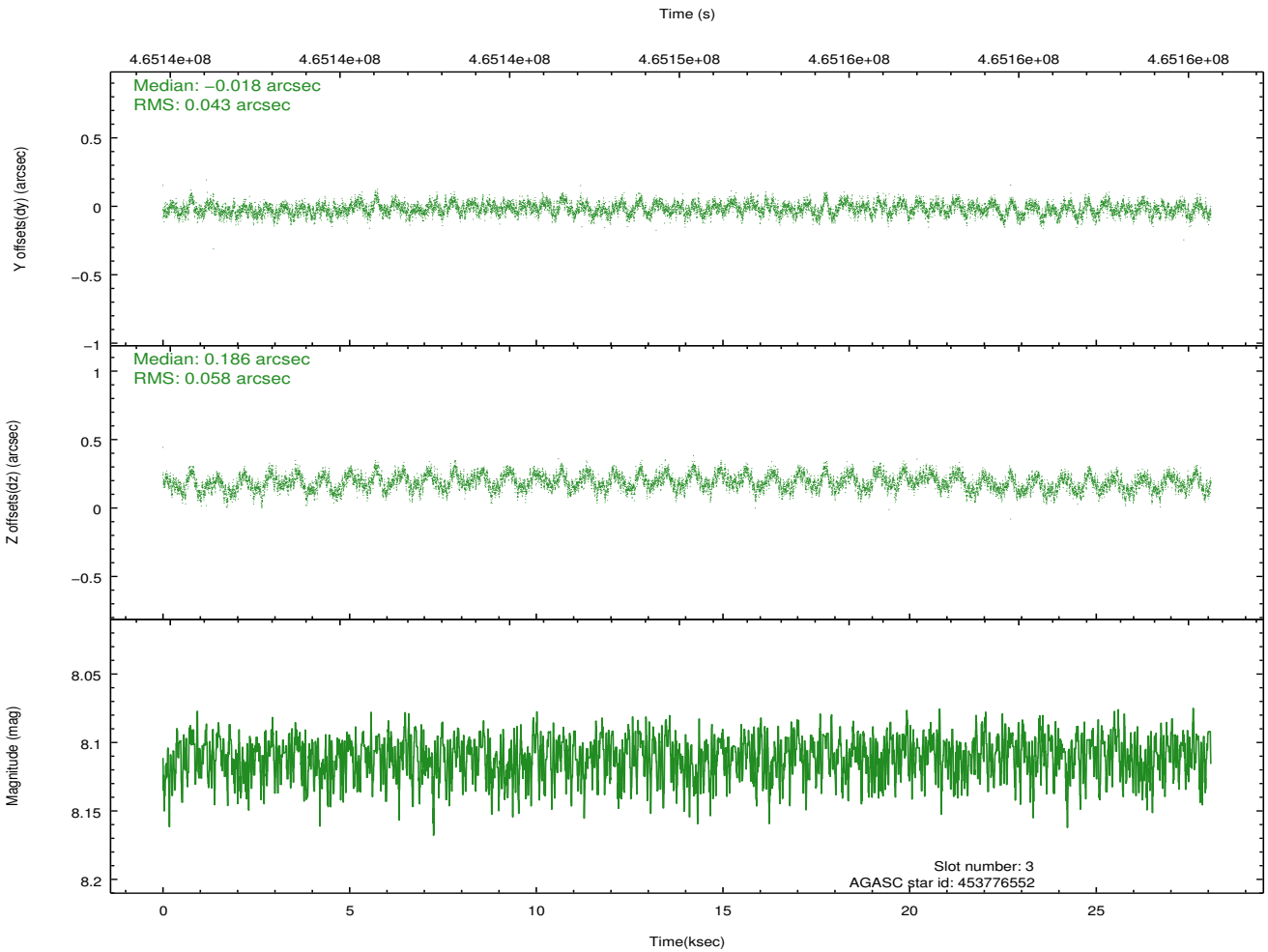
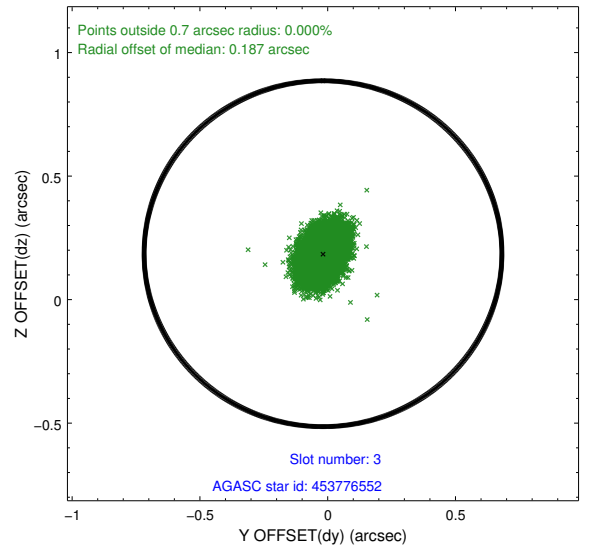
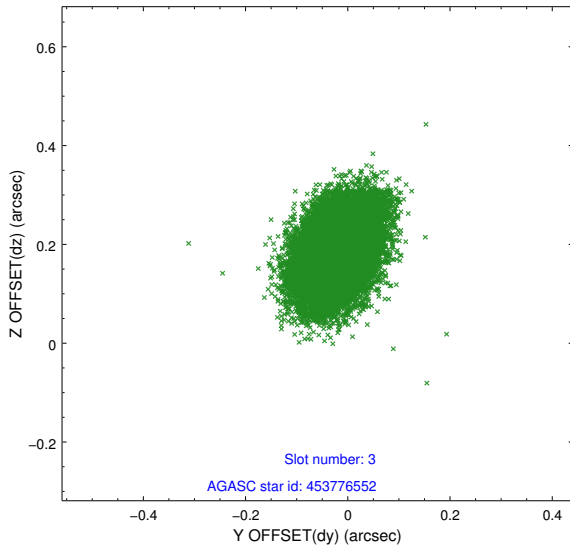
Slot Statistics

slot	status	used	id	mag	n_pts	med_dy	med_dz	dr1	dr2	ra	dec	mean_y	mean_z
0	FID		ACIS-I-1	7.07	6848	-0.035	-0.003	0.018	0.097	0.000000	0.000000	920.39	-842.00
1	FID		ACIS-I-4	6.99	6847	0.222	0.043	0.016	0.059	0.000000	0.000000	2140.68	1057.88
2	FID		ACIS-I-5	7.06	6847	-0.286	0.031	0.017	0.041	0.000000	0.000000	-1827.81	1055.68
3	GUIDE	used	453776552	8.11	13694	-0.018	0.186	0.077	0.123	202.406739	50.186569	-1305.40	-1604.80
4	GUIDE	used	454692248	9.30	13590	0.154	-0.023	0.129	0.201	202.744066	50.628741	-1216.27	162.39
5	GUIDE	used	454692696	10.28	13685	0.080	0.017	0.199	0.340	203.805294	50.067231	1826.73	-713.70
6	GUIDE	used	454692736	9.68	13619	-0.105	0.024	0.189	0.306	203.552835	50.198777	1101.73	-516.12
7	GUIDE	used	454694864	7.96	13691	-0.092	-0.208	0.081	0.131	203.458203	50.950289	-186.43	1871.07

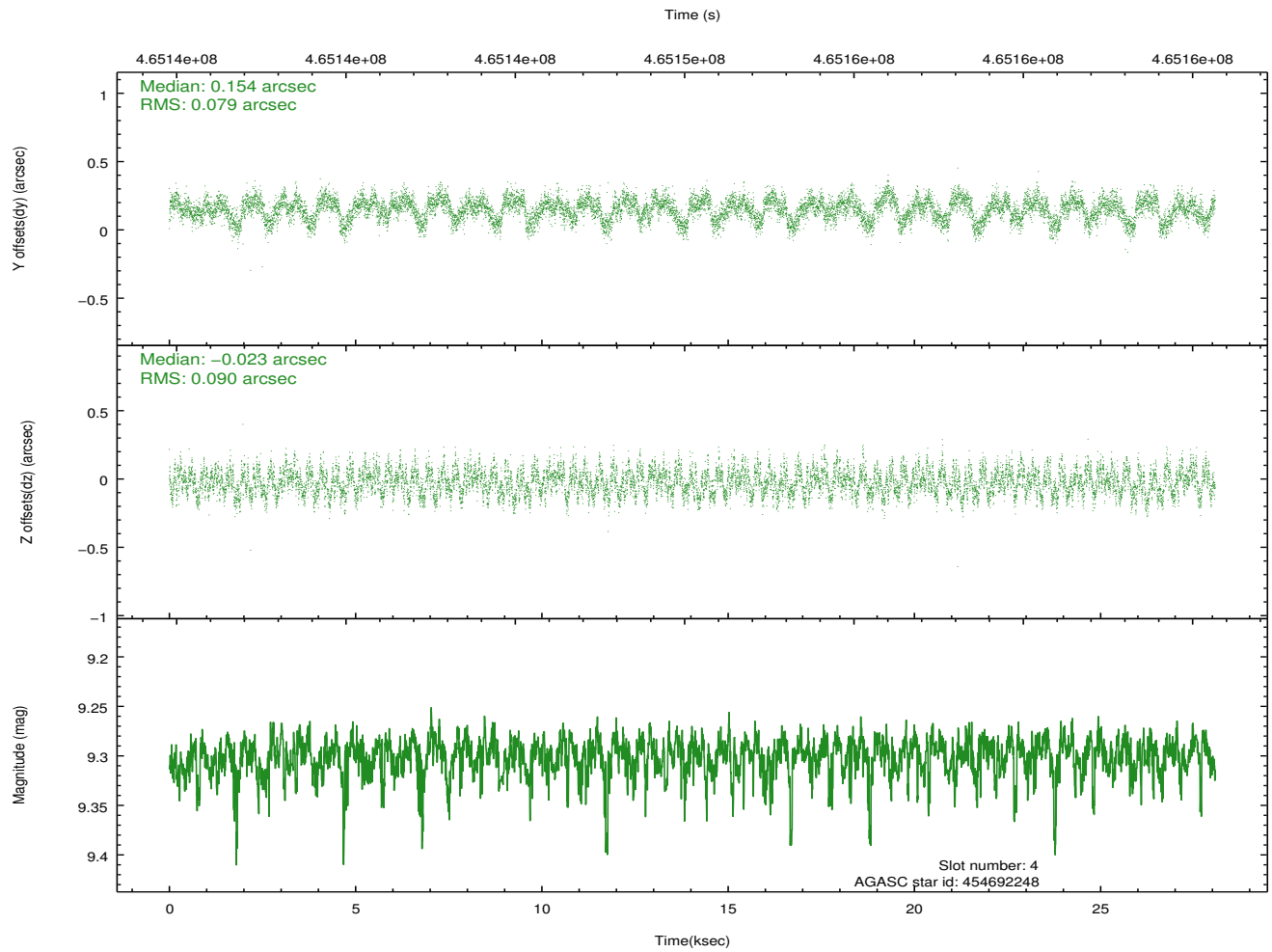
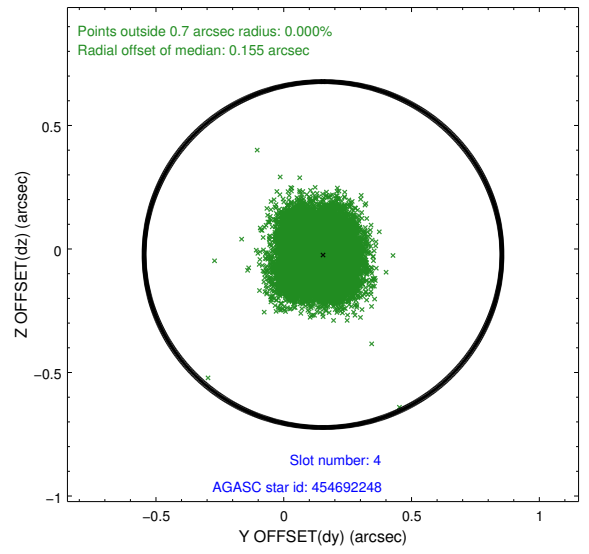
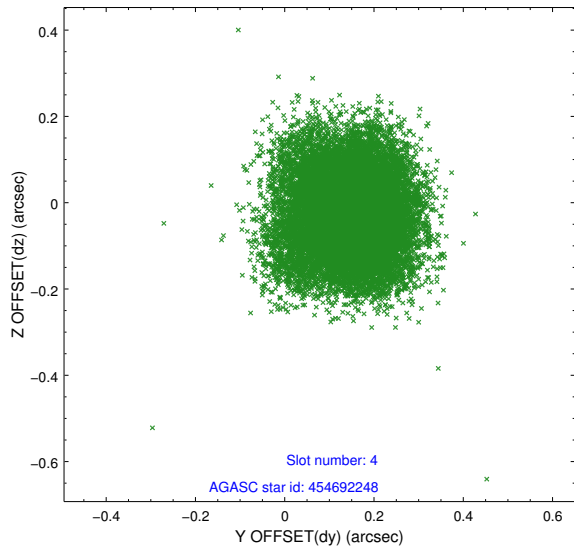
∞

2.4 Star Slots

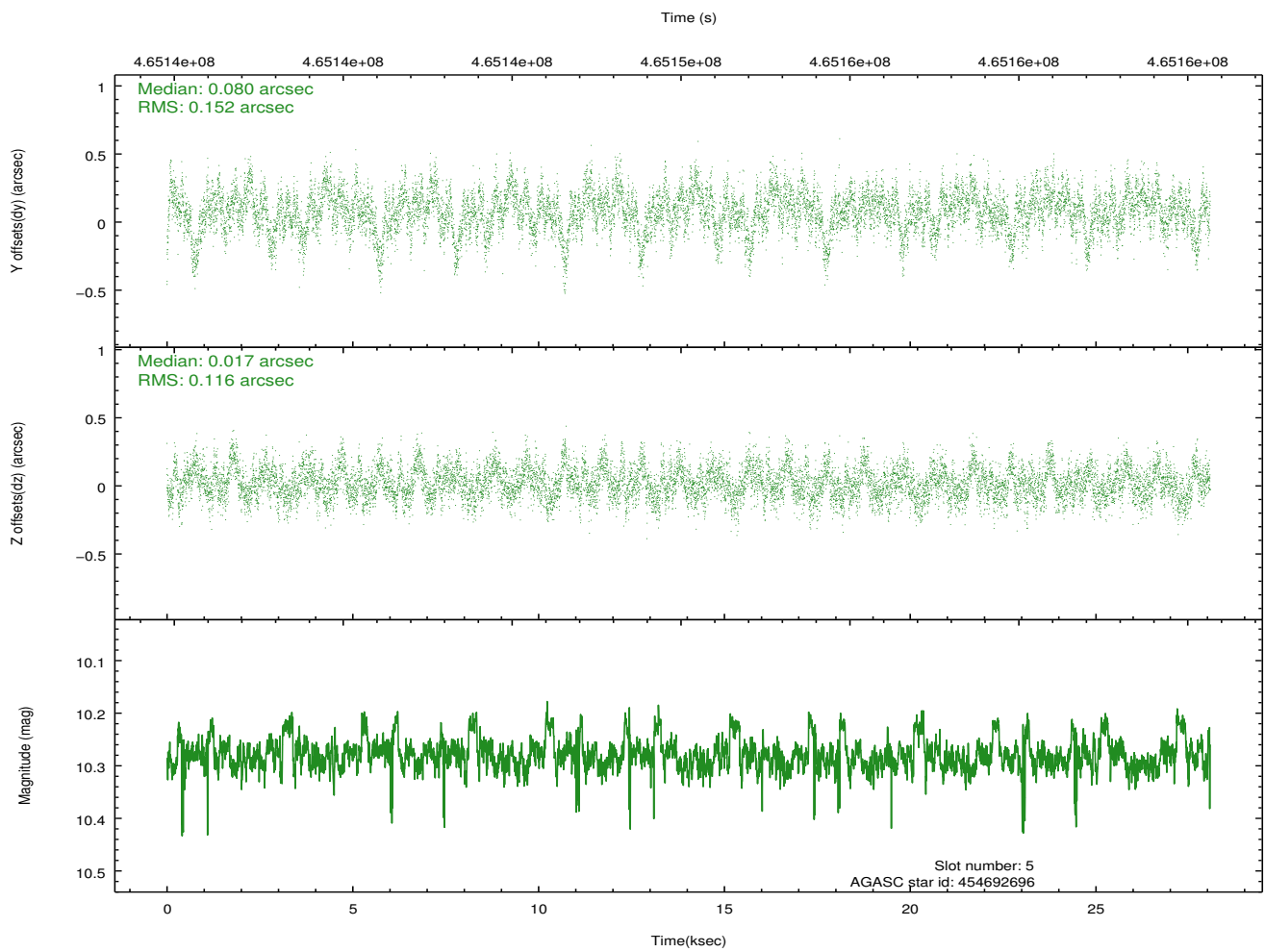
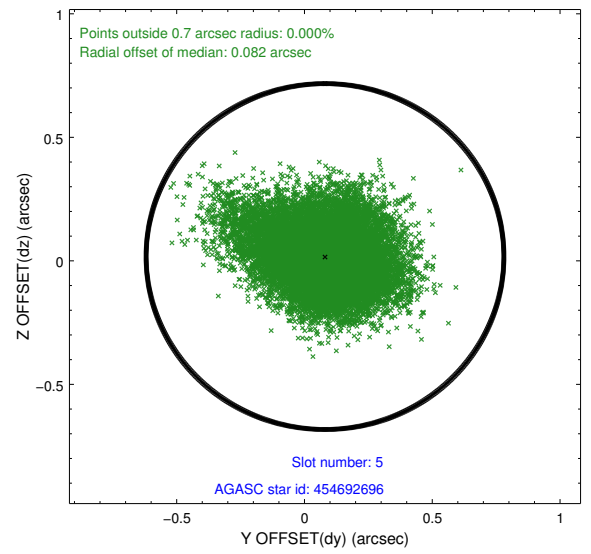
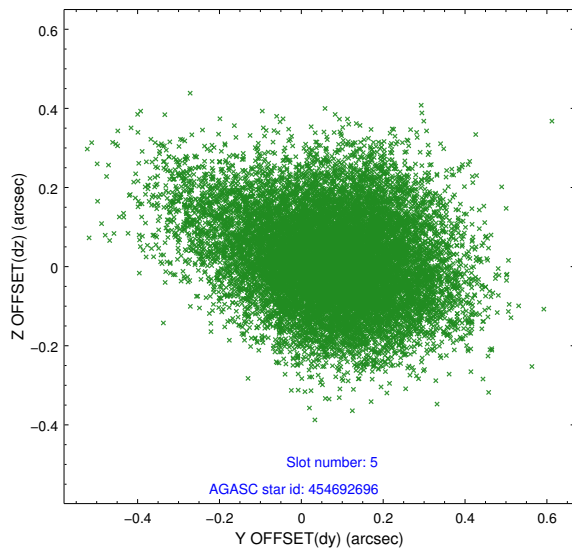
2.4.1 Slot 3



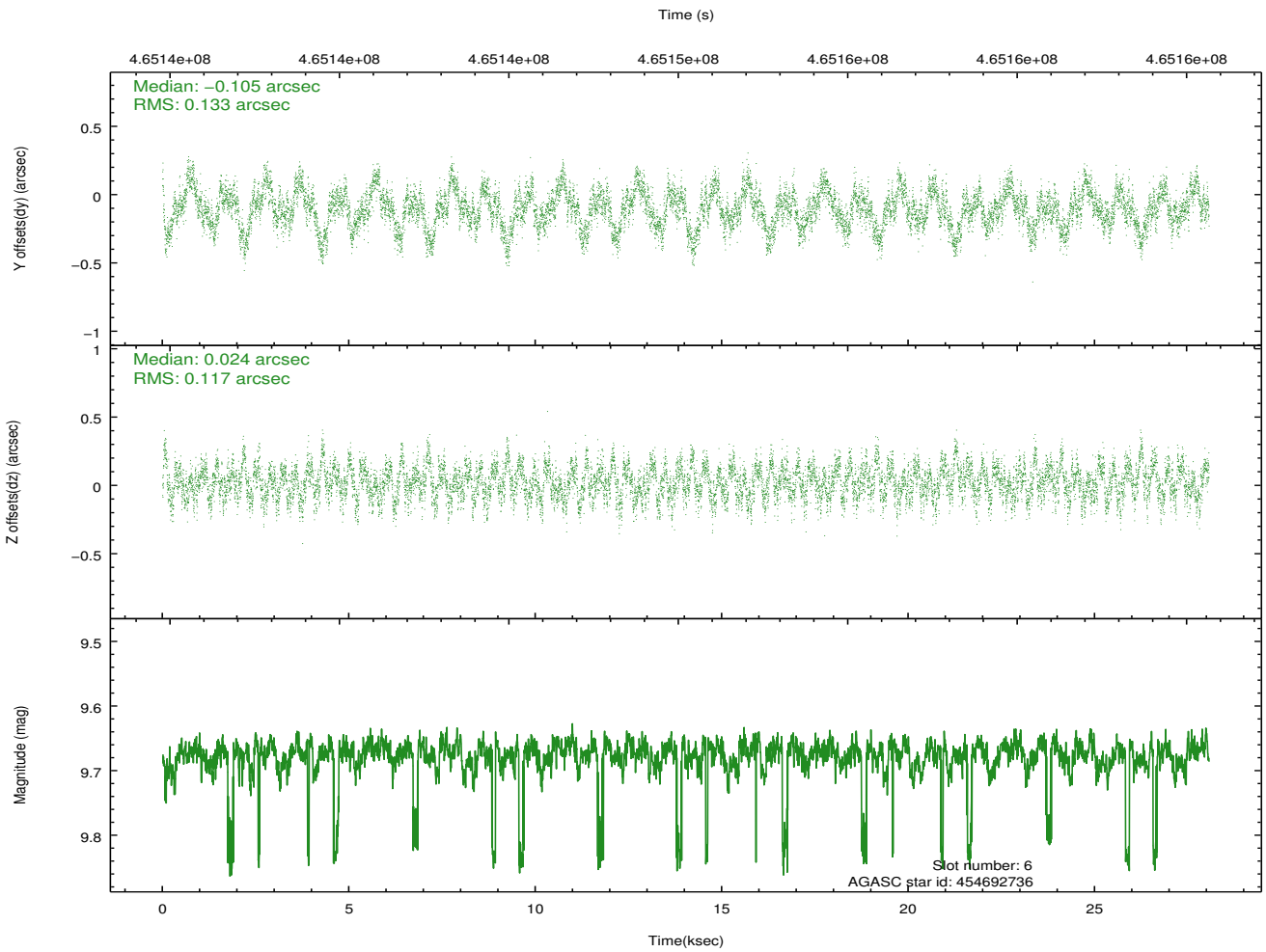
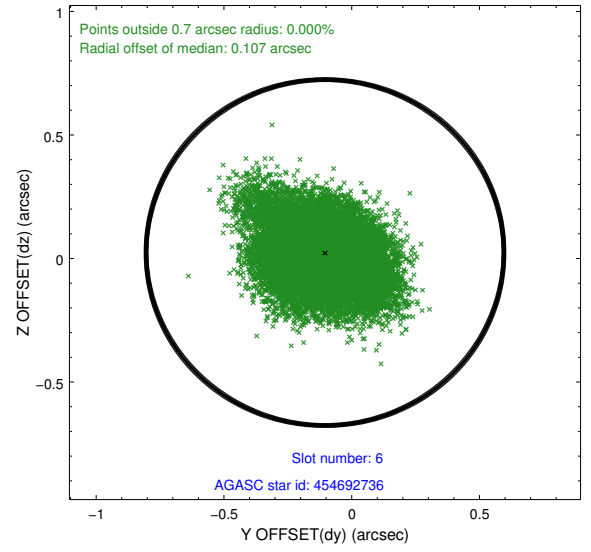
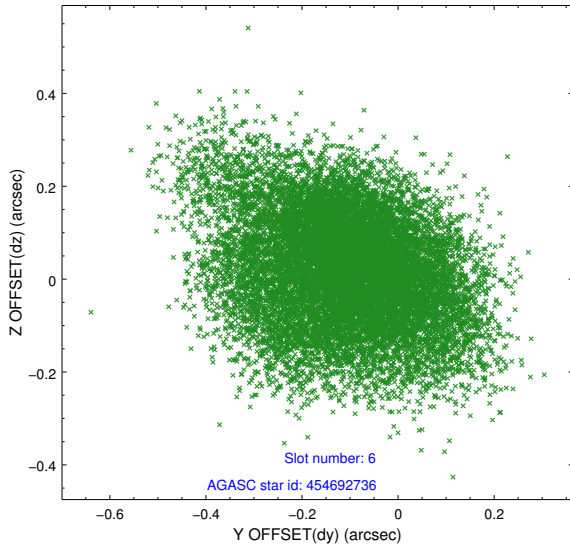
2.4.2 Slot 4



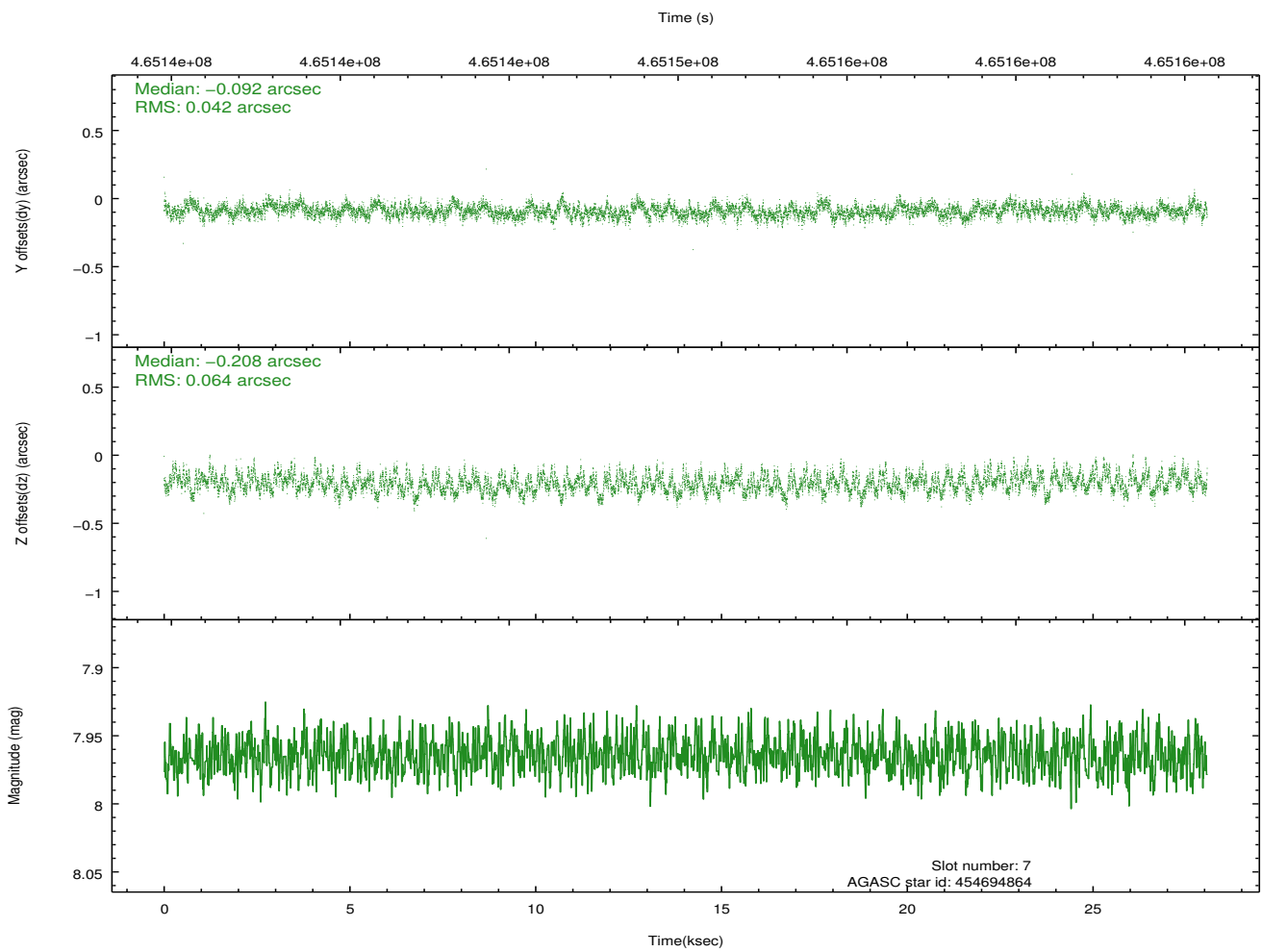
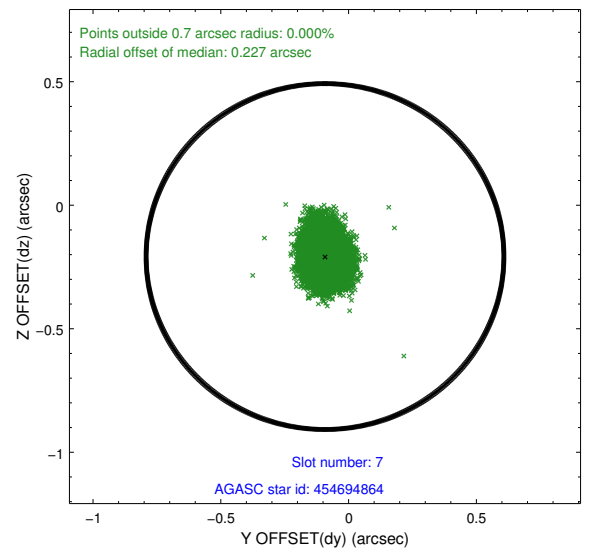
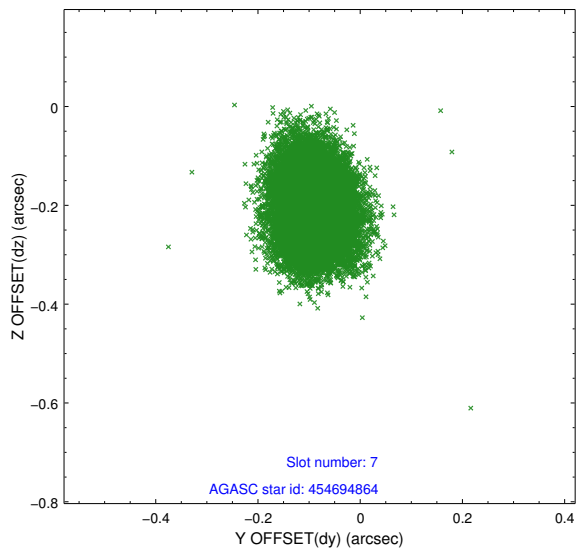
2.4.3 Slot 5



2.4.4 Slot 6

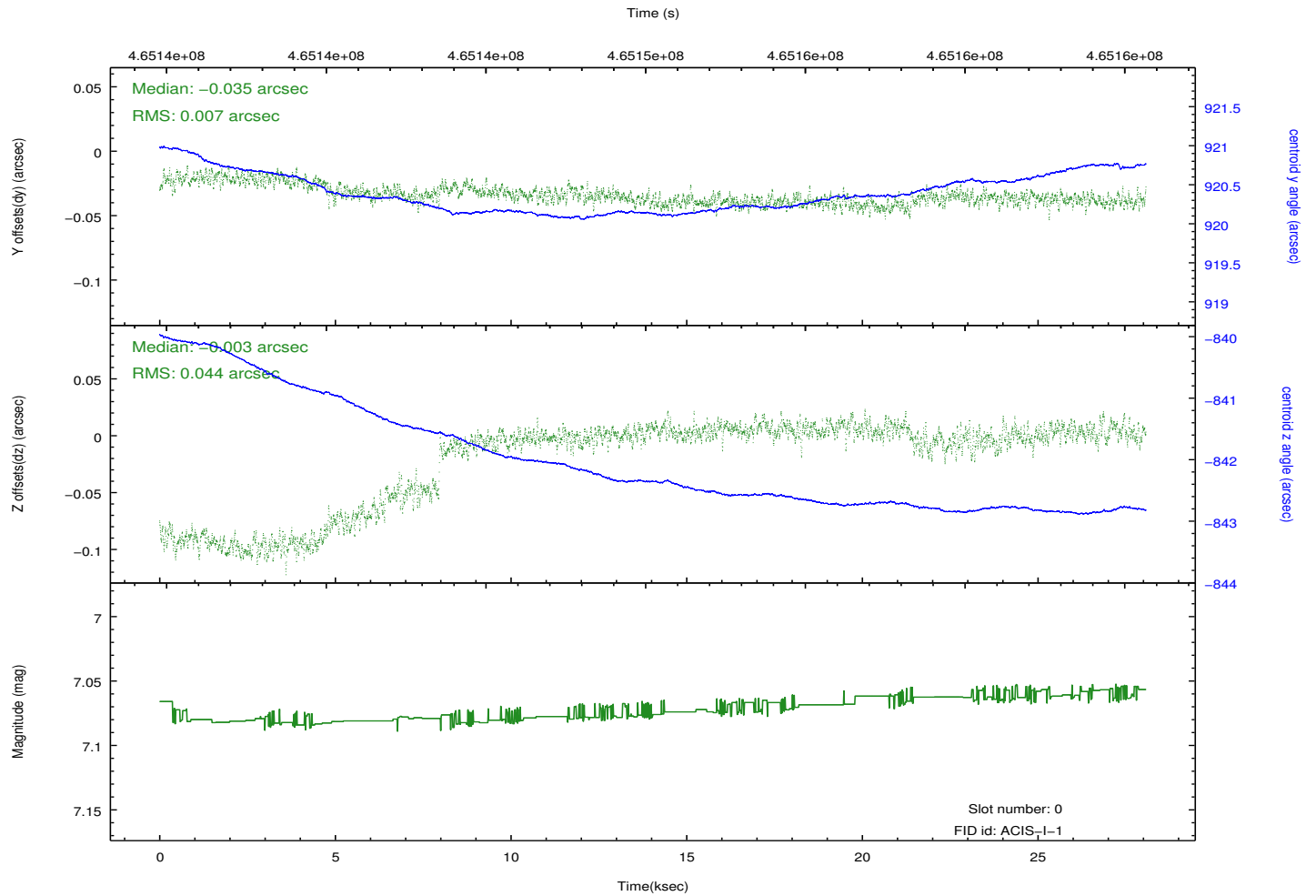
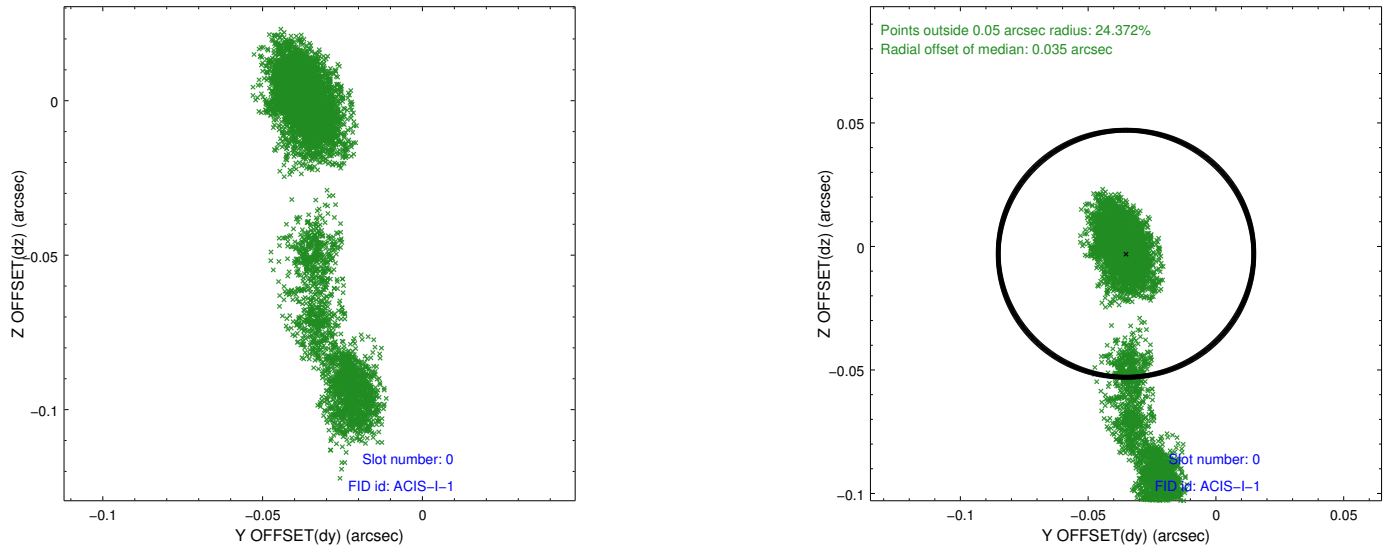


2.4.5 Slot 7

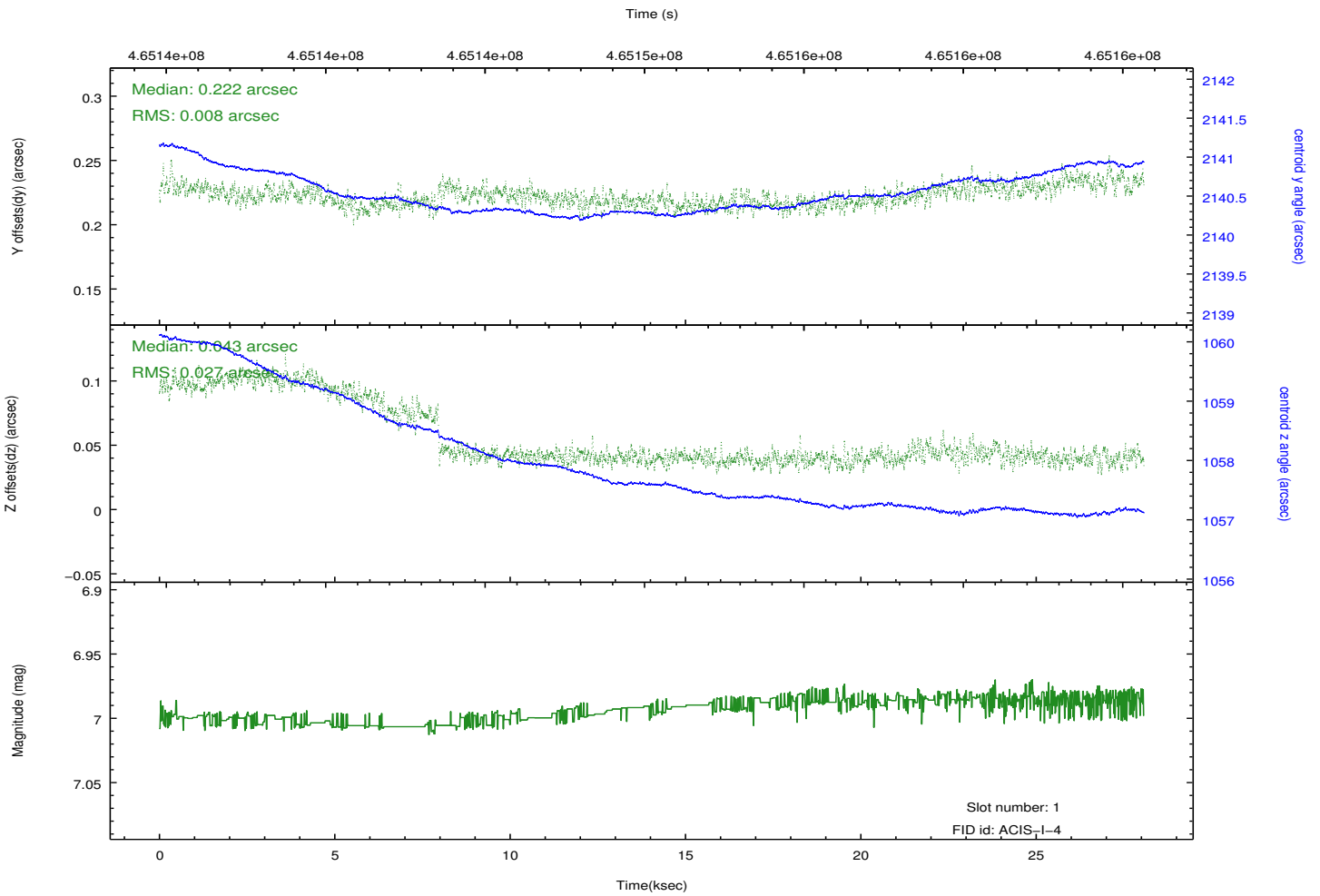
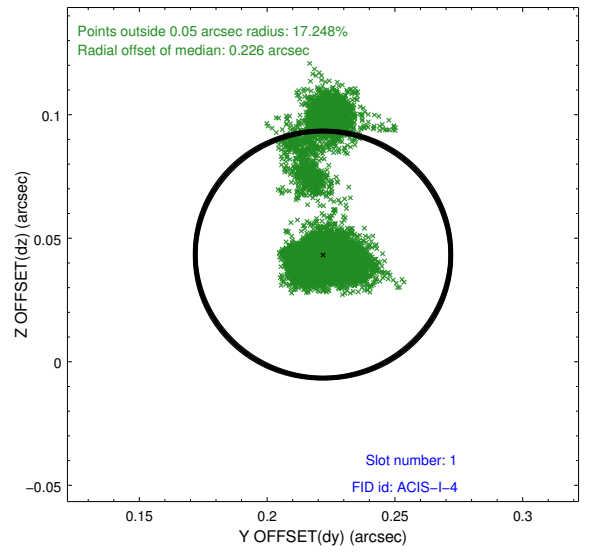
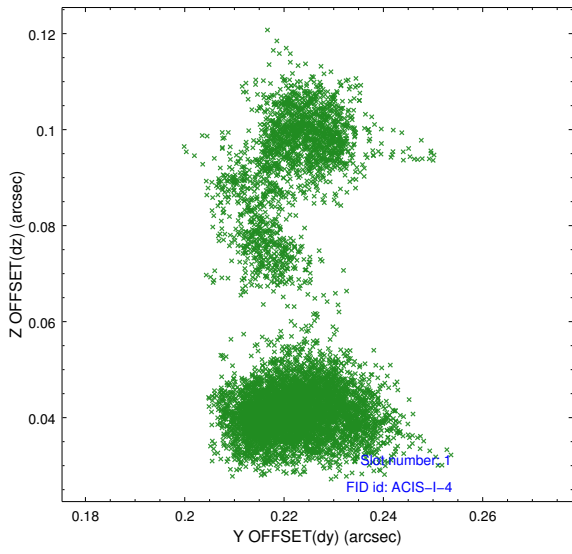


2.5 FID Slots

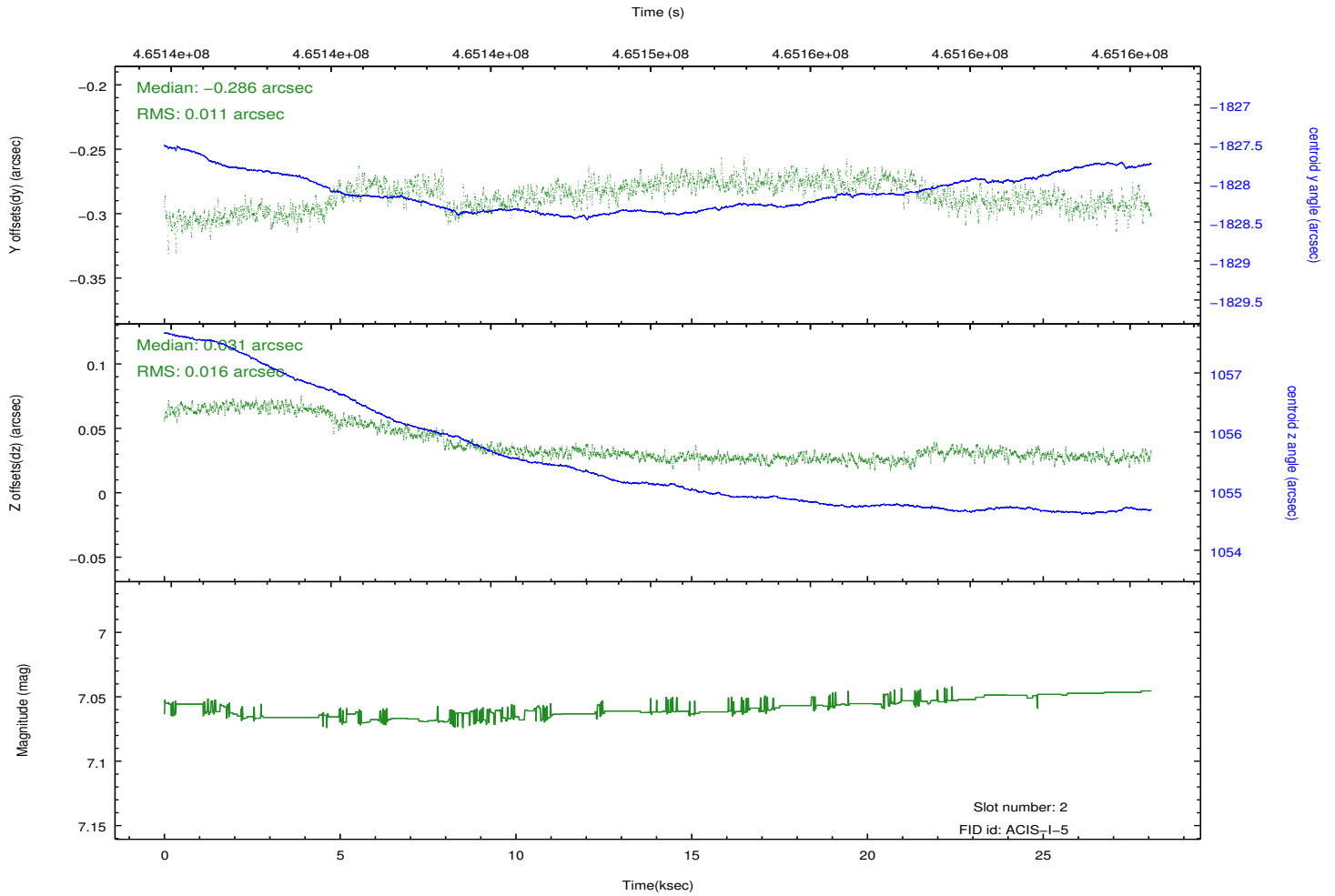
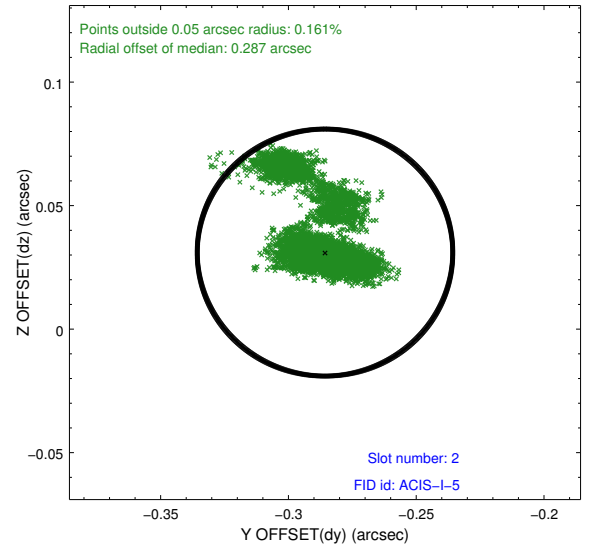
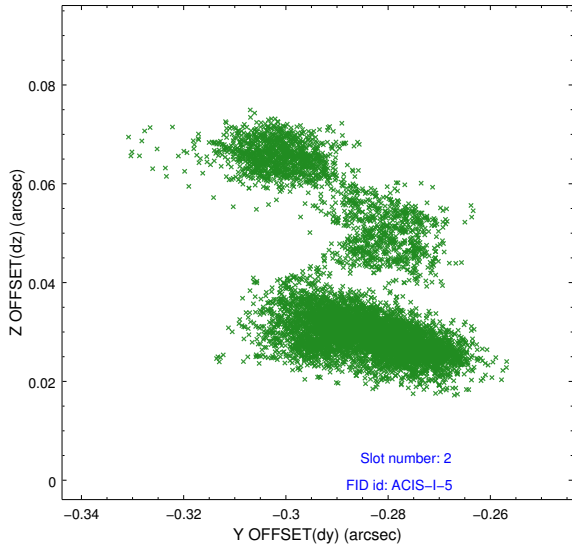
2.5.1 Slot 0



2.5.2 Slot 1



2.5.3 Slot 2



A Summary

A.1 Status

V&V Scientist	Jen Lauer
V&V Date (YYYY-MM-DD)	2014.12.02
V&V Edition	1
V&V Disposition and Status	OK
V&V Charge Time	28.002300215364

A.2 Comments

These data have been reprocessed with new aspect alignment calibration files that correct small mean offsets (up to 0.4 arcsecs) and improve overall astrometric accuracy. The new calibration was determined using data from the time period being reprocessed and was performed using cross-correlation of X-ray sources with radio and optical counterparts.