

# V&V Reference Report

## L2 ASCDS Version : 8.1.1

Observation 1407 - L2 Version 5  
Chandra X-Ray Center

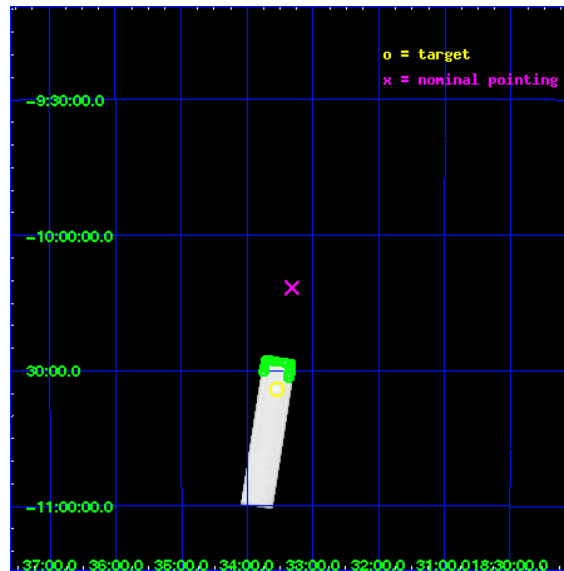
L2 Processing Date : Nov 20 2009

## Contents

<b>1</b>	<b>Front</b>	<b>2</b>
<b>2</b>	<b>OBI</b>	<b>3</b>
2.1	OBI . . . . .	3
2.1.1	Images . . . . .	3
2.1.2	Parameters . . . . .	4
2.1.3	Events . . . . .	4
2.2	Compared Parameters . . . . .	5
2.3	Aspect . . . . .	6
2.4	Star Slots . . . . .	9
2.4.1	Slot 3 . . . . .	9
2.4.2	Slot 4 . . . . .	10
2.4.3	Slot 5 . . . . .	11
2.4.4	Slot 6 . . . . .	12
2.4.5	Slot 7 . . . . .	13
2.5	FID Slots . . . . .	14
2.5.1	Slot 0 . . . . .	14
2.5.2	Slot 1 . . . . .	15
2.5.3	Slot 2 . . . . .	16
<b>3</b>	<b>Point Sources</b>	<b>17</b>
<b>A</b>	<b>Summary</b>	<b>18</b>
A.1	Status . . . . .	18
A.2	Comments . . . . .	18

# 1 Front

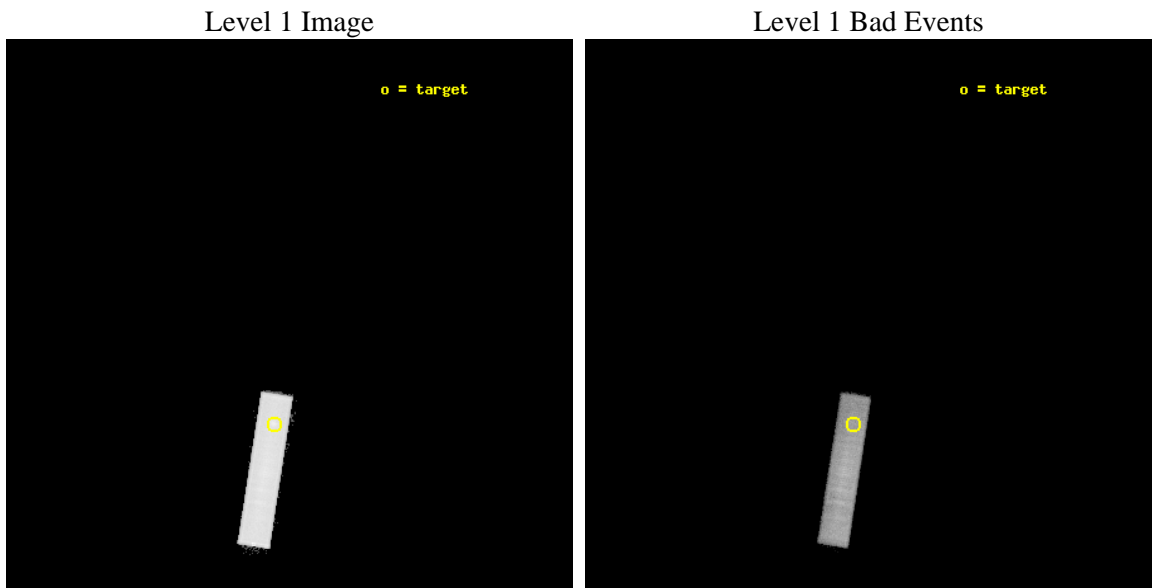
seq_num	580357	Sequence number
obs_id	1407	Observation id
title	HRC RESPONSE TO CONTINUUM SOURCE.	Proposal title
observer	Dr. CXC Calibration	Principal investigator
object	G21.5-0.9 [HRC-S, Offsets=23,0,0 -Y MCP]	Source name
ra_targ	278.389583	Observer's specified target RA
dec_targ	-10.568528	Observer's specified target Dec
ra_nom	278.33006472479	Nominal RA
dec_nom	-10.195163955266	Nominal Dec
roll_nom	278.90232373678	Nominal Roll
revision	5	Processing version of data
ontime	9917.131607607	[s]
livetime	9856.5419850096	Ontime multiplied by DTCOR
l2events	341998	Number of level 2 events



## 2 OBI

### 2.1 OBI

#### 2.1.1 Images



## 2.1.2 Parameters

obi_num	0	Obi number	sched_exp_time	10000.000000	Scheduled observation exposure time
ascdsver	8.1.1	Processing system revision	ontime	9917.131607607	[s]
caldbver	4.1.4	&#160	l1events	524383	Number of level 1 events
date	2009-11-20T13:55:30	Date and time of file creation			
revision	4	Processing version of data			

## 2.1.3 Events

Level 1 Events

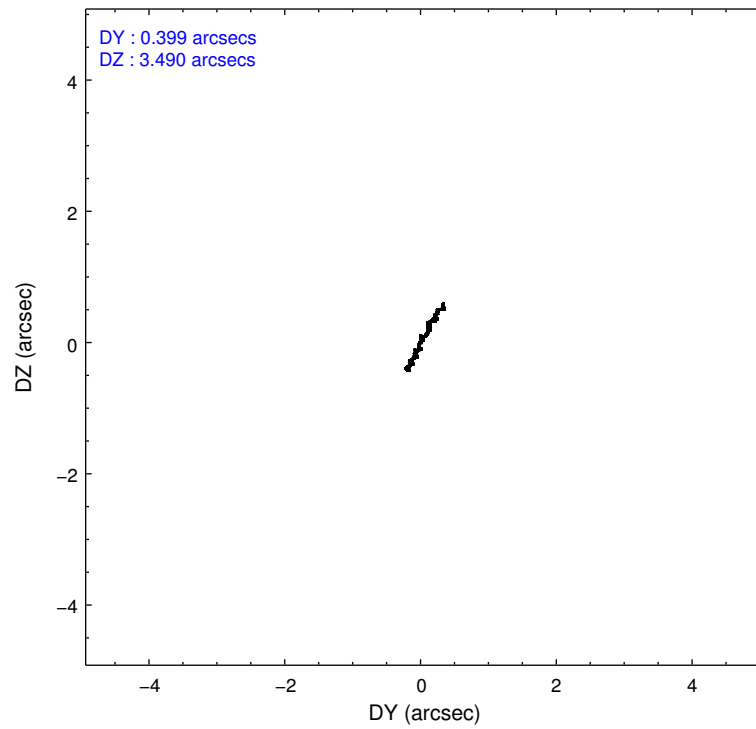
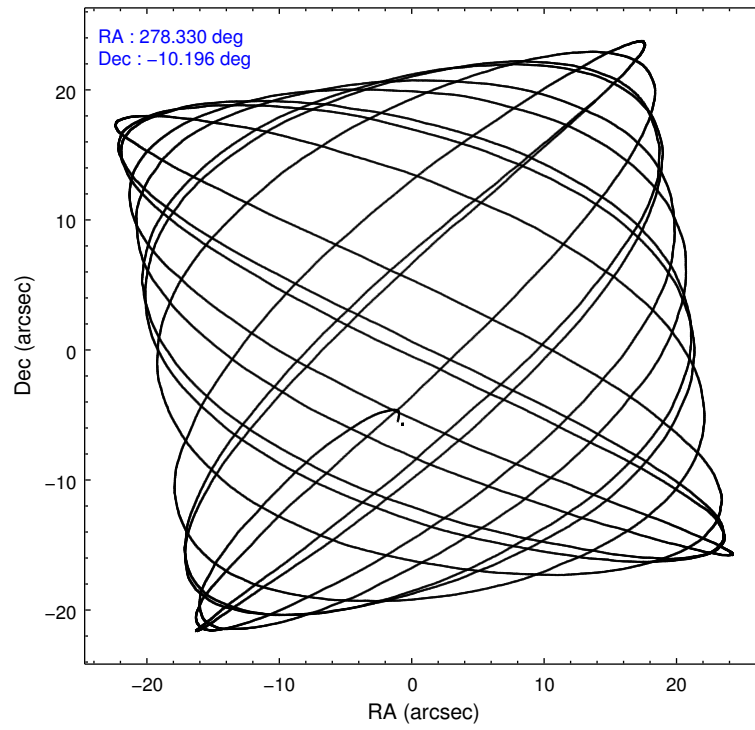
	segment 1	segment 2	segment 3
level 1 events	0	238	524145
rejected events	0	169	143811
rejected %	0%	71%	27%

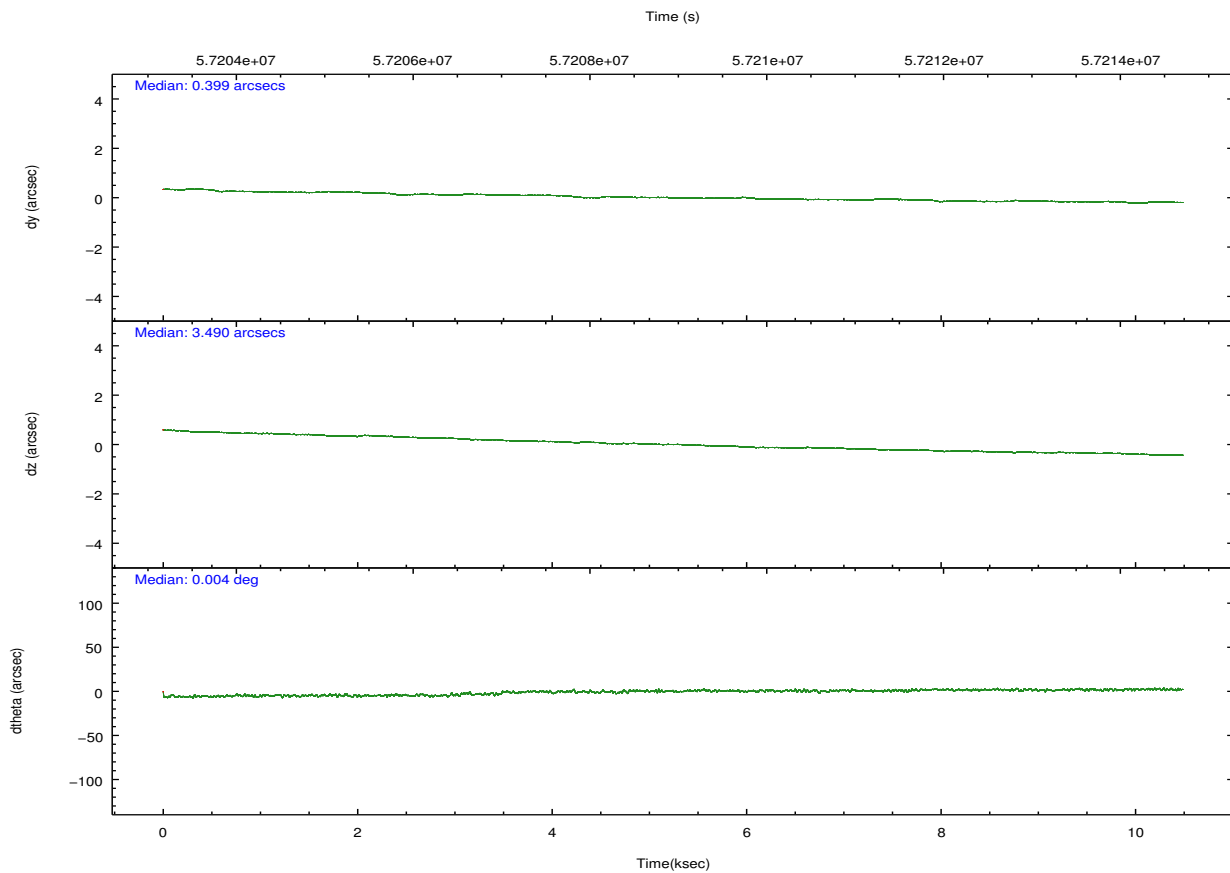
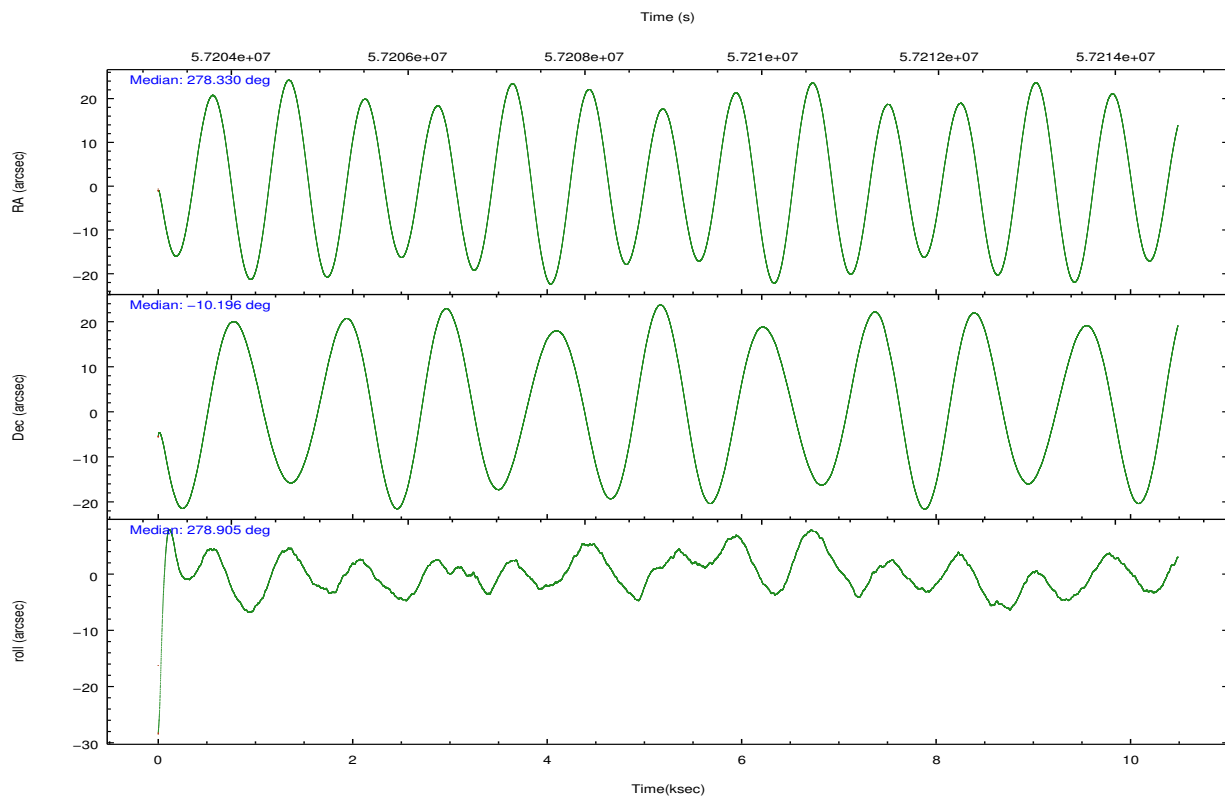
## 2.2 Compared Parameters

Parameter	Planned	Actual
Instrument	HRC	HRC
Detector	HRC-S	HRC-S
Grating	NONE	NONE
Data mode	OBSERVING	OBSERVING
Observation mode	POINTING	POINTING
Pointing RA	278.310945	278.3300647247942
Pointing Dec	-10.173055	-10.19516395526569
Pointing Roll	278.831653	278.9023237367784
SIM focus pos (mm)	-1.536095	-1.608774427437079
SIM defocus (mm)	-0.002758228956671258	-0.07543778803278212
SIM translation stage pos (mm)	250.455976	250.466033080201
SIM translation stage offset (mm)	0	-0.01005468664627074
Observation start time	57204183.184000	57203157.248182
Observation start date	1999-10-25T02:01:59	1999-10-25T01:45:57
Observation end time	57214183.184000	57214344.611085
Observation end date	1999-10-25T04:48:39	1999-10-25T04:52:24

Parameter	Planned	Actual
Obspar format version number	6	6
Obspar file type	PREDICTED	ACTUAL
Obspar update status	NONE	UPDATED

## 2.3 Aspect



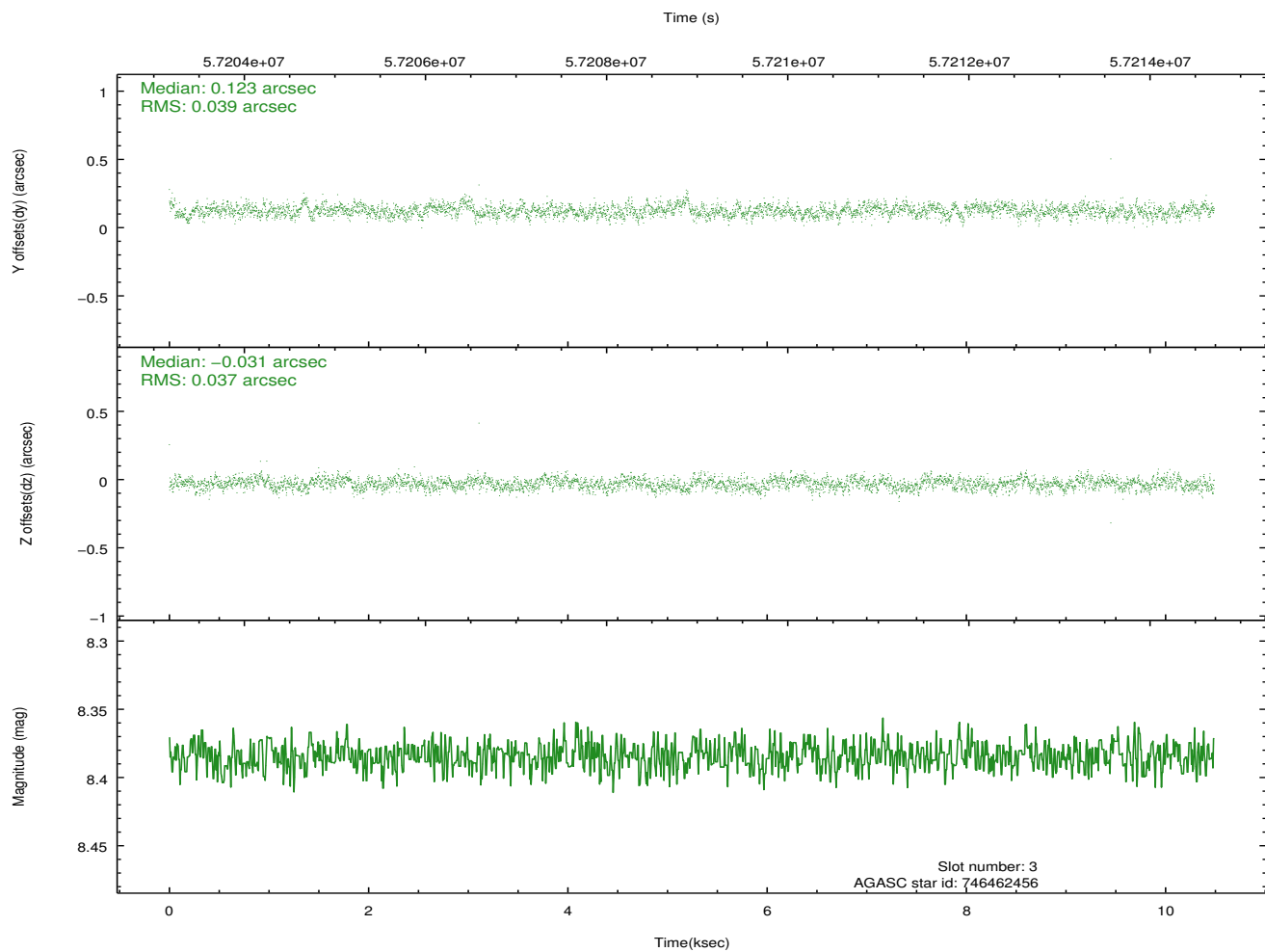
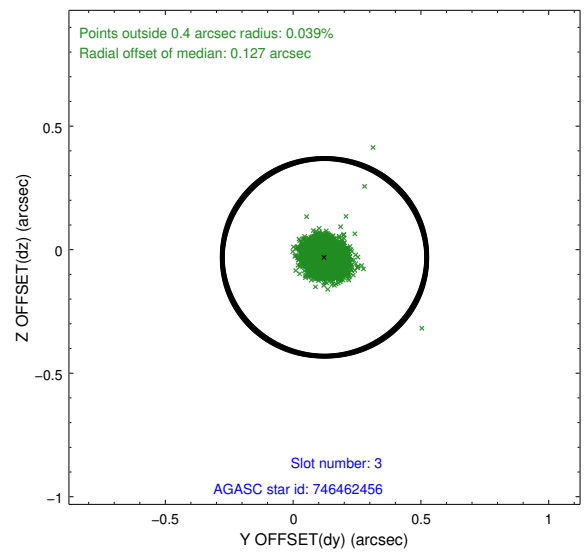
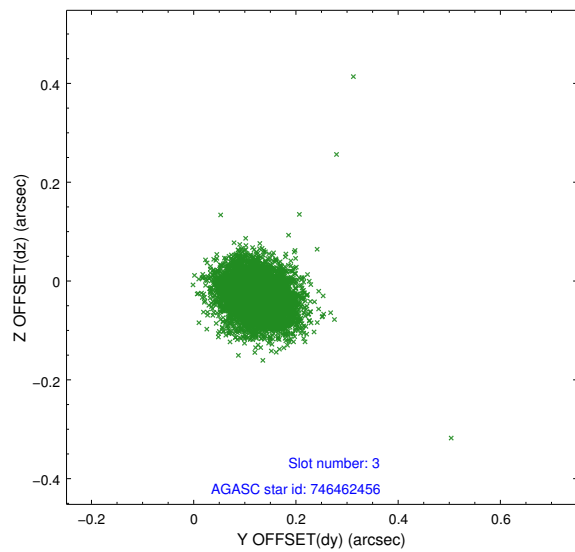


### Slot Statistics

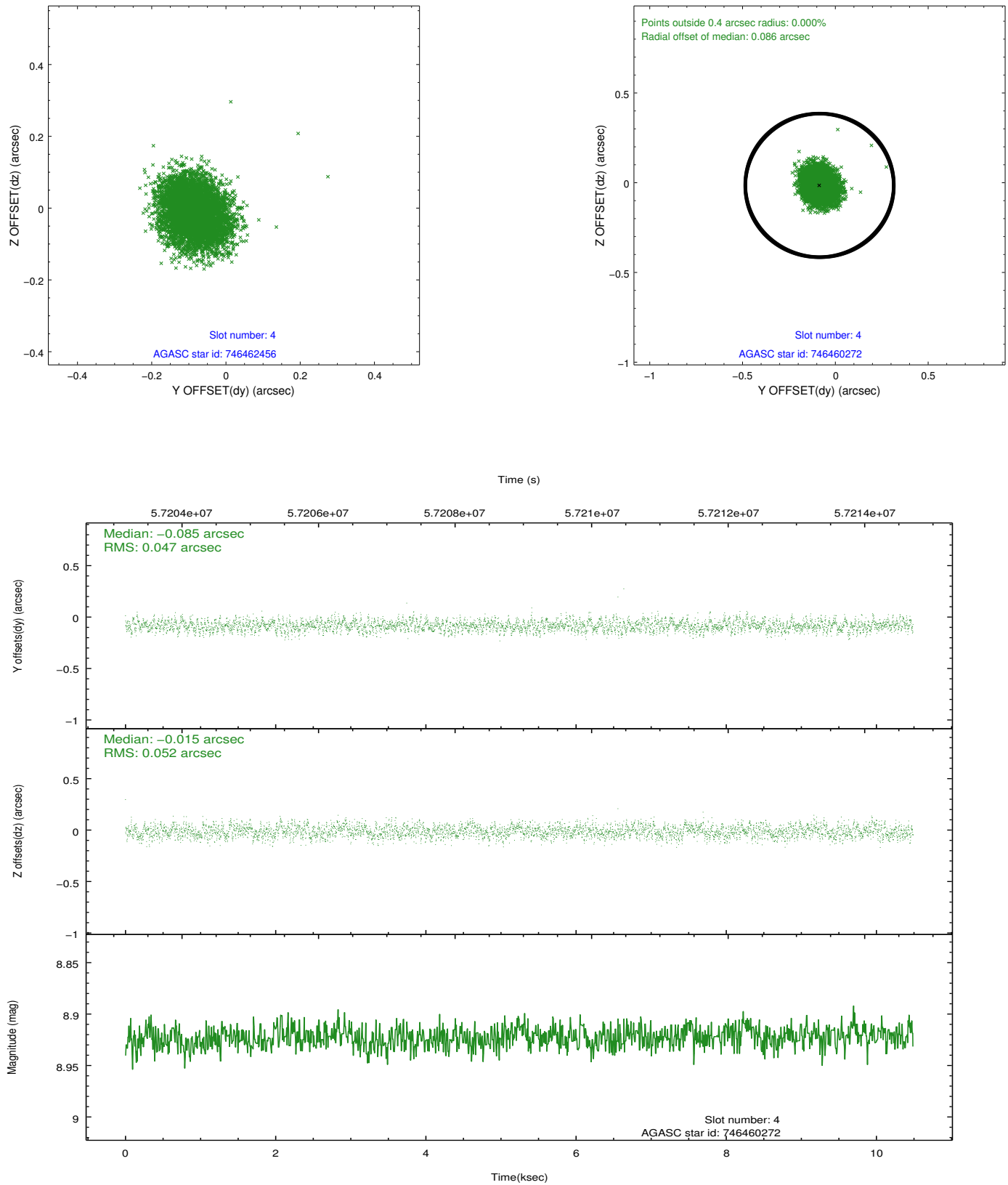
slot	status	id	mag	n_pts	med_dy	med_dz	dr1	dr2	ra	dec	mean_y	mean_z
0	FID	HRC-S-1	7.02	5115	0.169	-0.035	0.038	0.054	0.000000	0.000000	-1154.41	-451.71
1	FID	HRC-S-3	7.02	5116	0.083	-0.145	0.039	0.056	0.000000	0.000000	-1157.31	577.63
2	FID	HRC-S-4	7.02	5115	0.136	-0.117	0.010	0.016	0.000000	0.000000	1243.68	580.10
3	GUIDE	746462456	8.38	5114	0.123	-0.031	0.056	0.090	278.652171	-10.530173	1455.09	996.66
4	GUIDE	746460272	8.92	5107	-0.085	-0.015	0.076	0.118	278.847488	-10.152127	217.79	1891.09
5	GUIDE	746458288	10.00	5107	-0.108	-0.008	0.130	0.206	278.591405	-9.671581	-1632.20	1261.88
6	GUIDE	746460328	9.82	5101	-0.071	0.005	0.102	0.166	278.603974	-9.898096	-820.01	1179.95
7	GUIDE	746461728	9.79	5111	0.139	0.050	0.110	0.177	278.986921	-10.530755	1640.90	2167.15

## 2.4 Star Slots

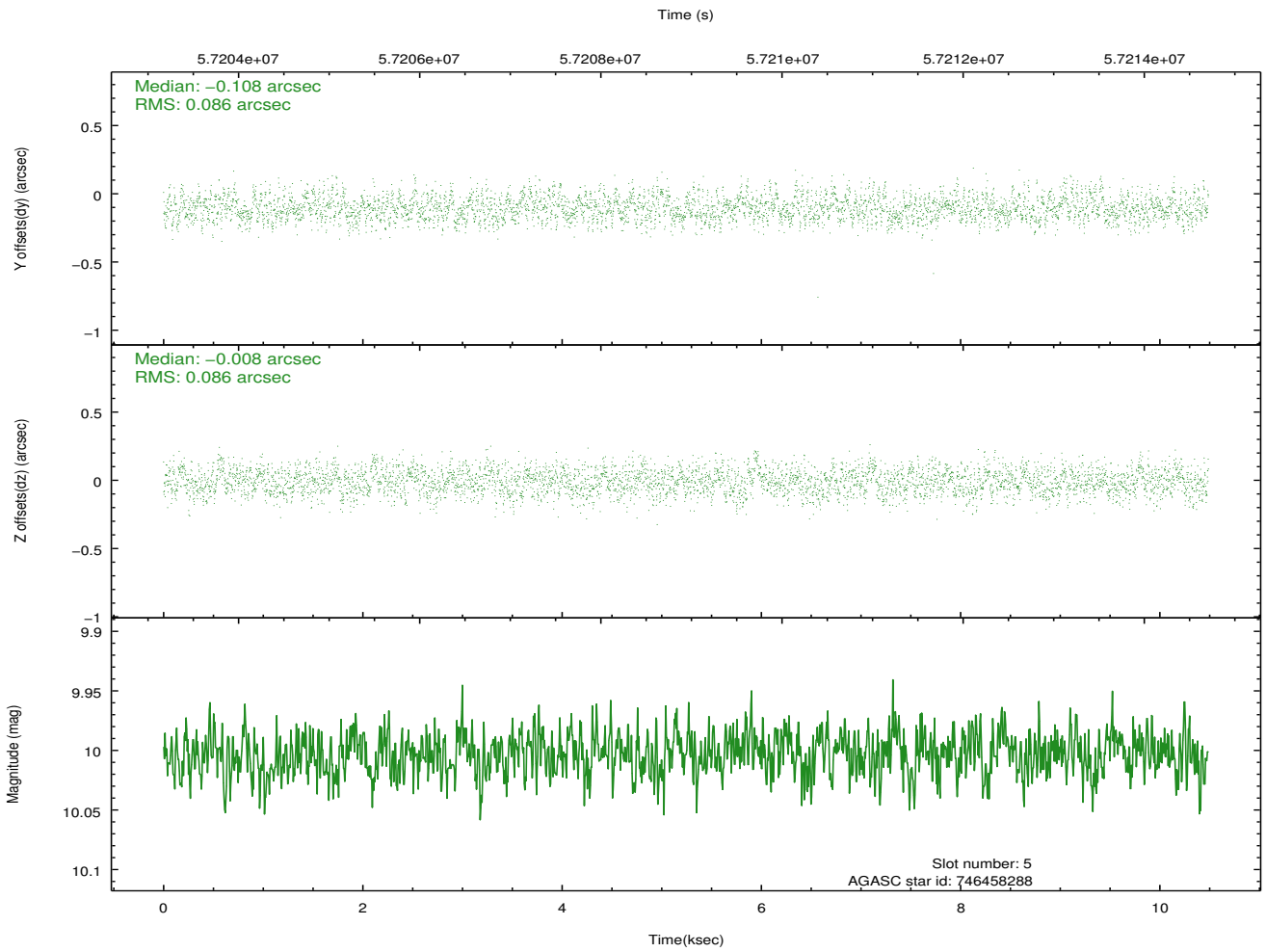
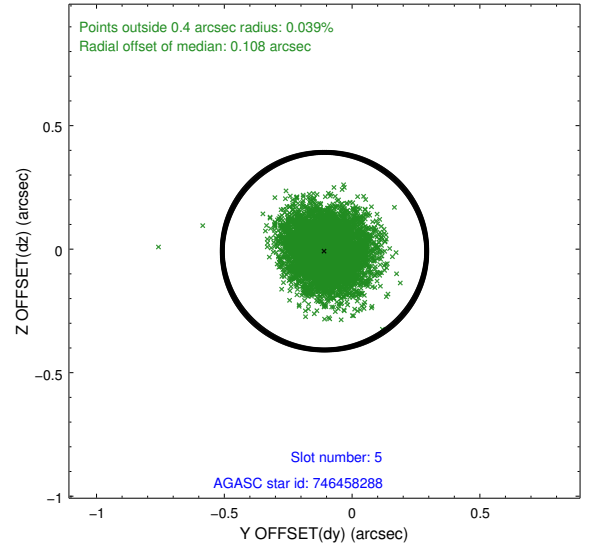
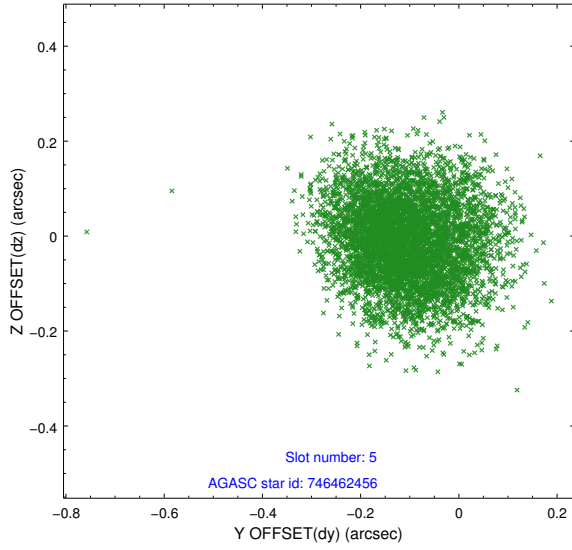
### 2.4.1 Slot 3



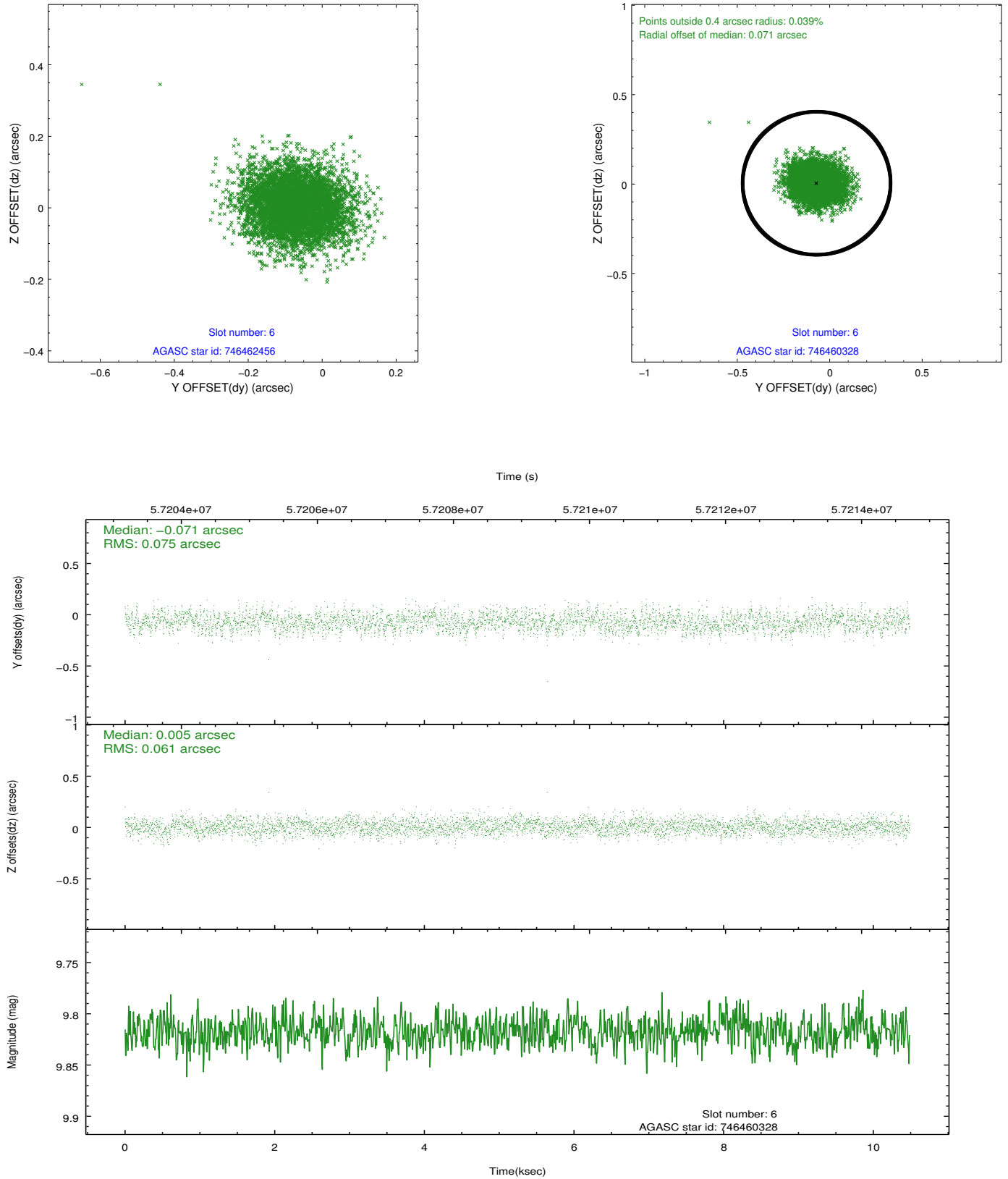
## 2.4.2 Slot 4



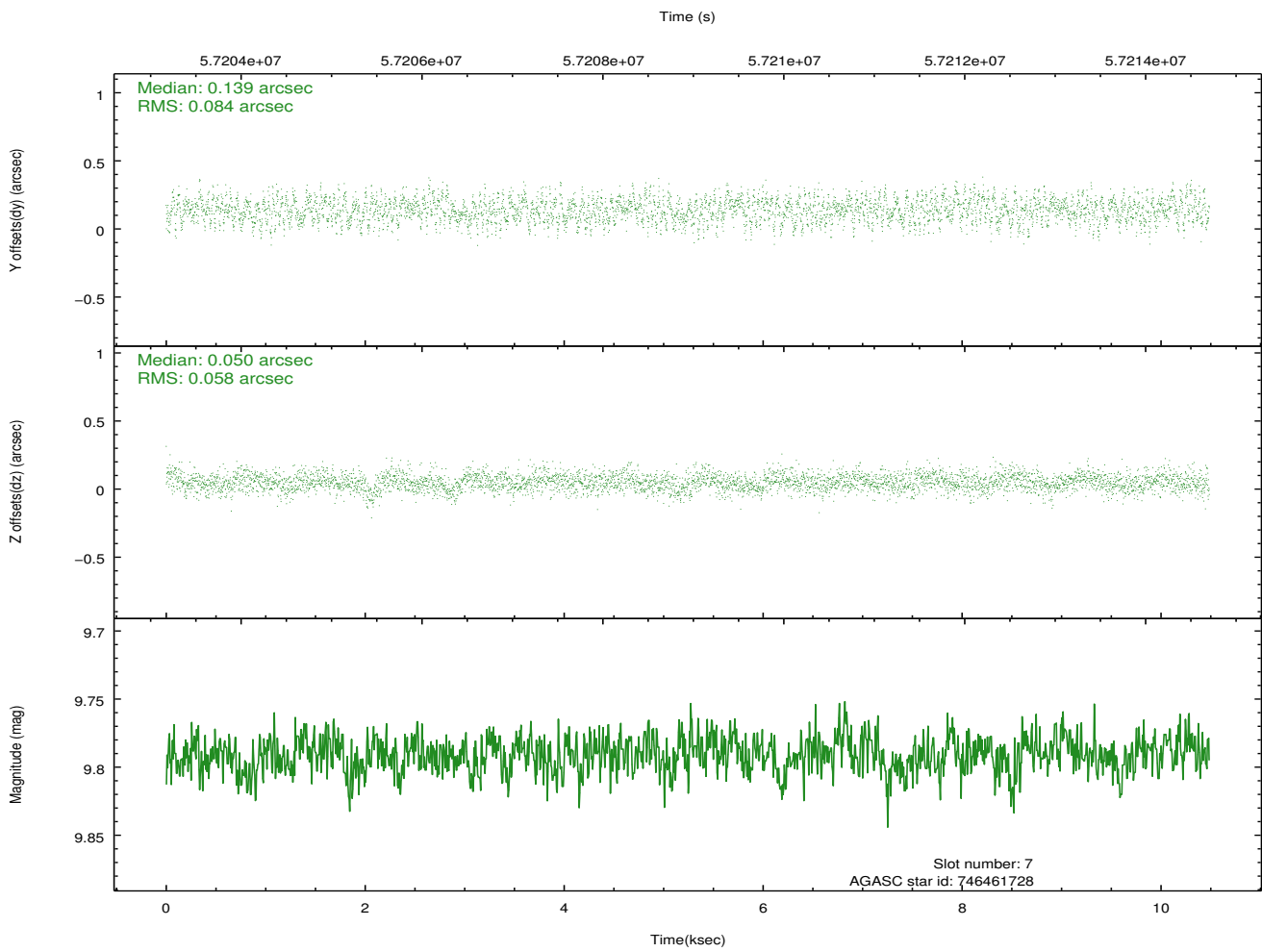
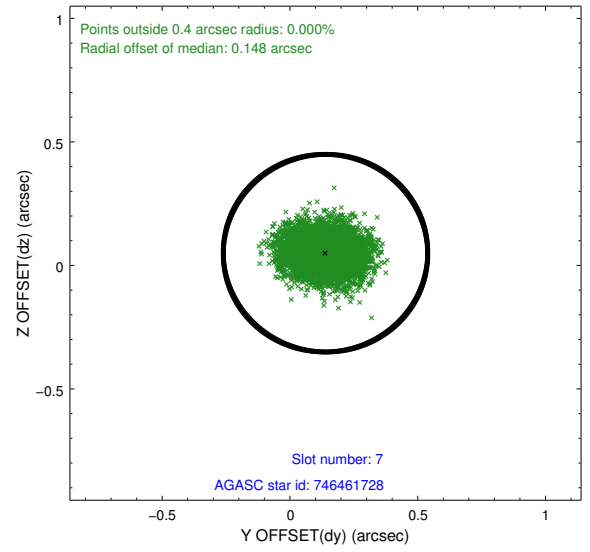
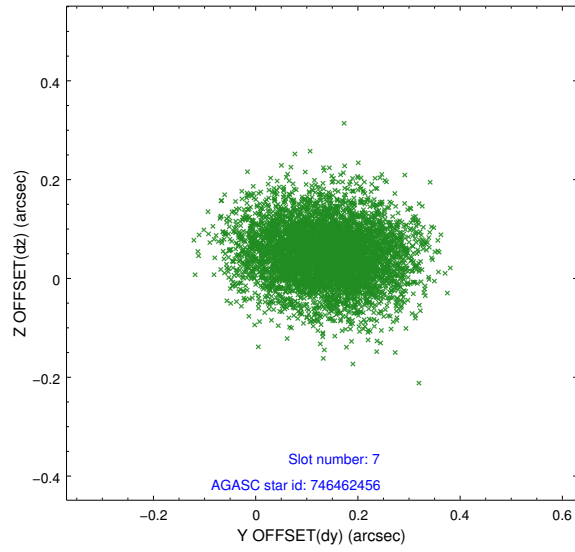
### 2.4.3 Slot 5



## 2.4.4 Slot 6

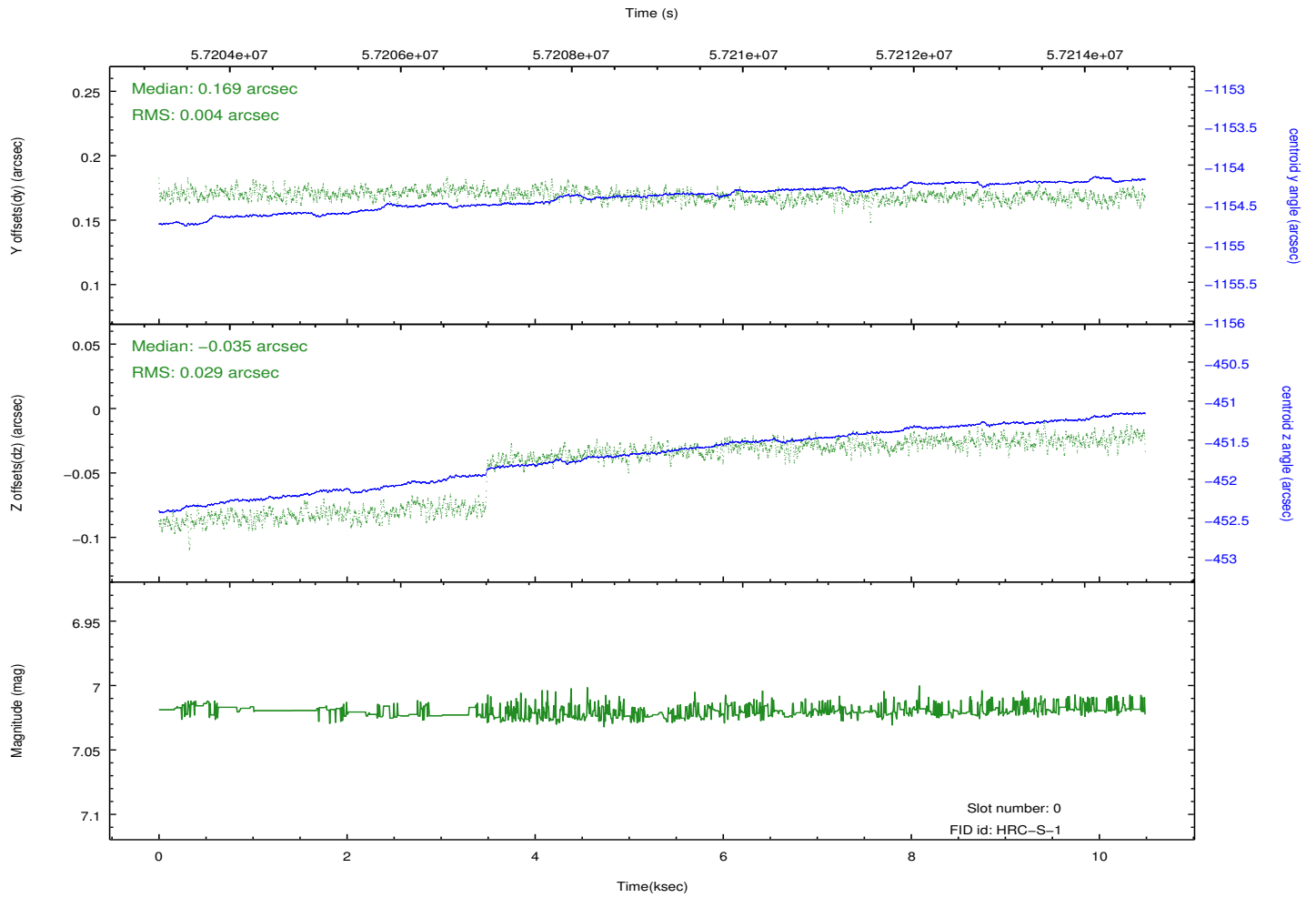
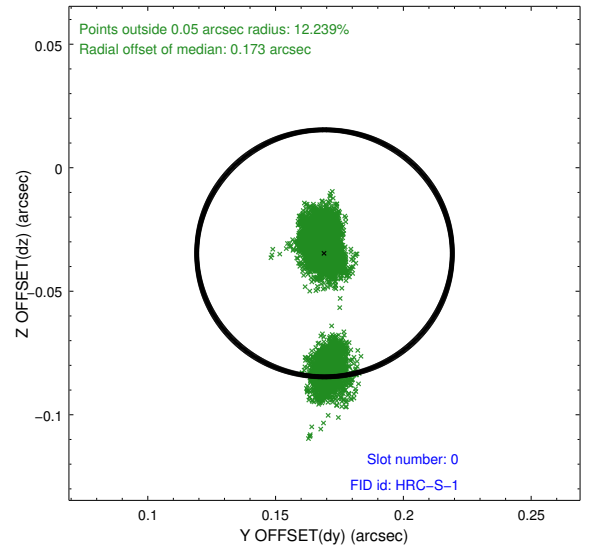
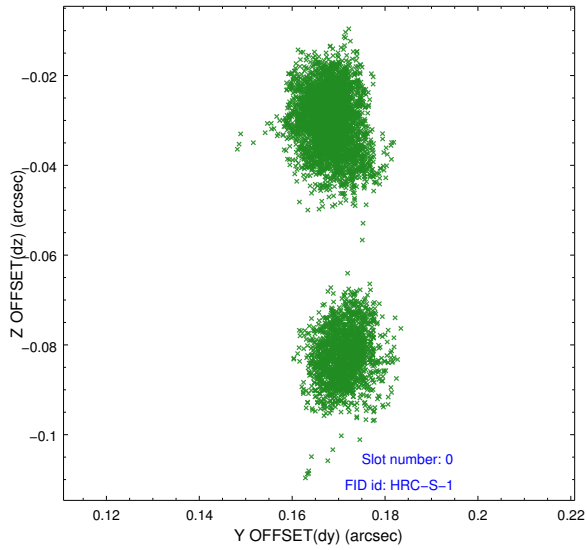


## 2.4.5 Slot 7

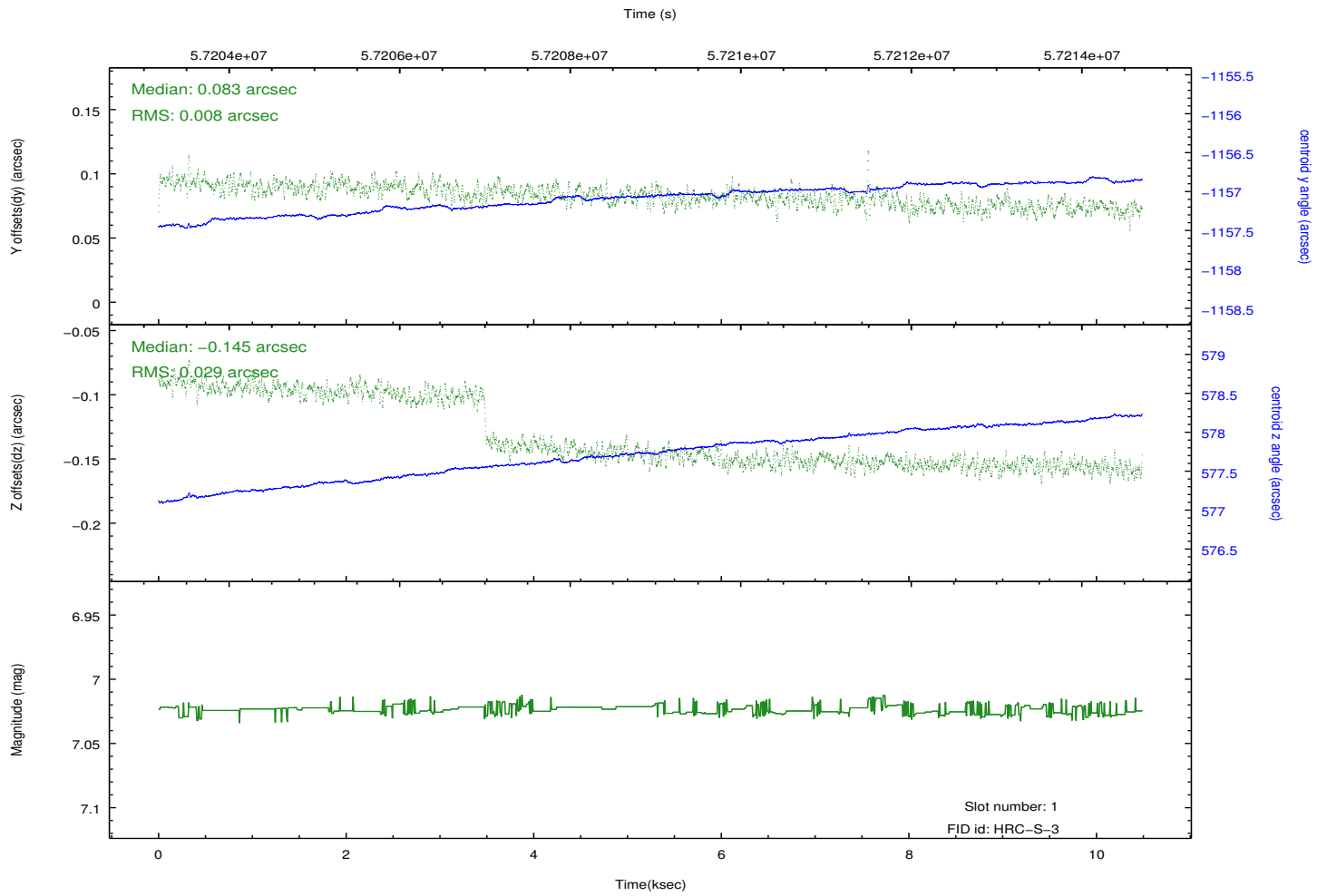
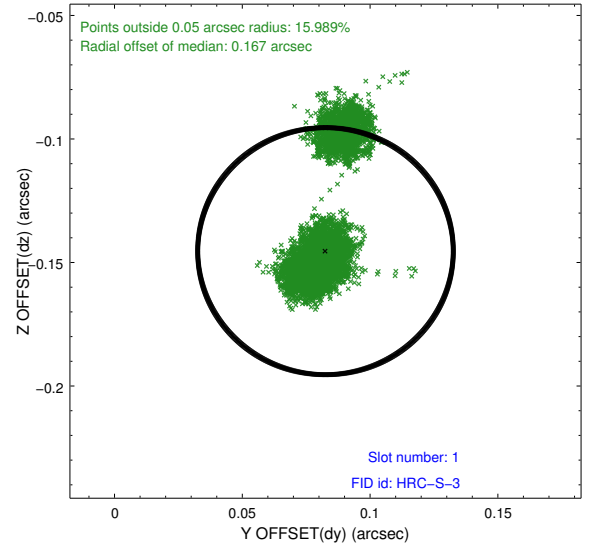
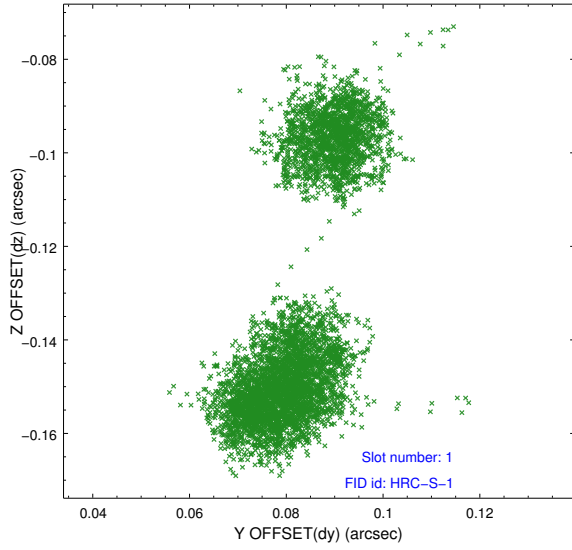


## 2.5 FID Slots

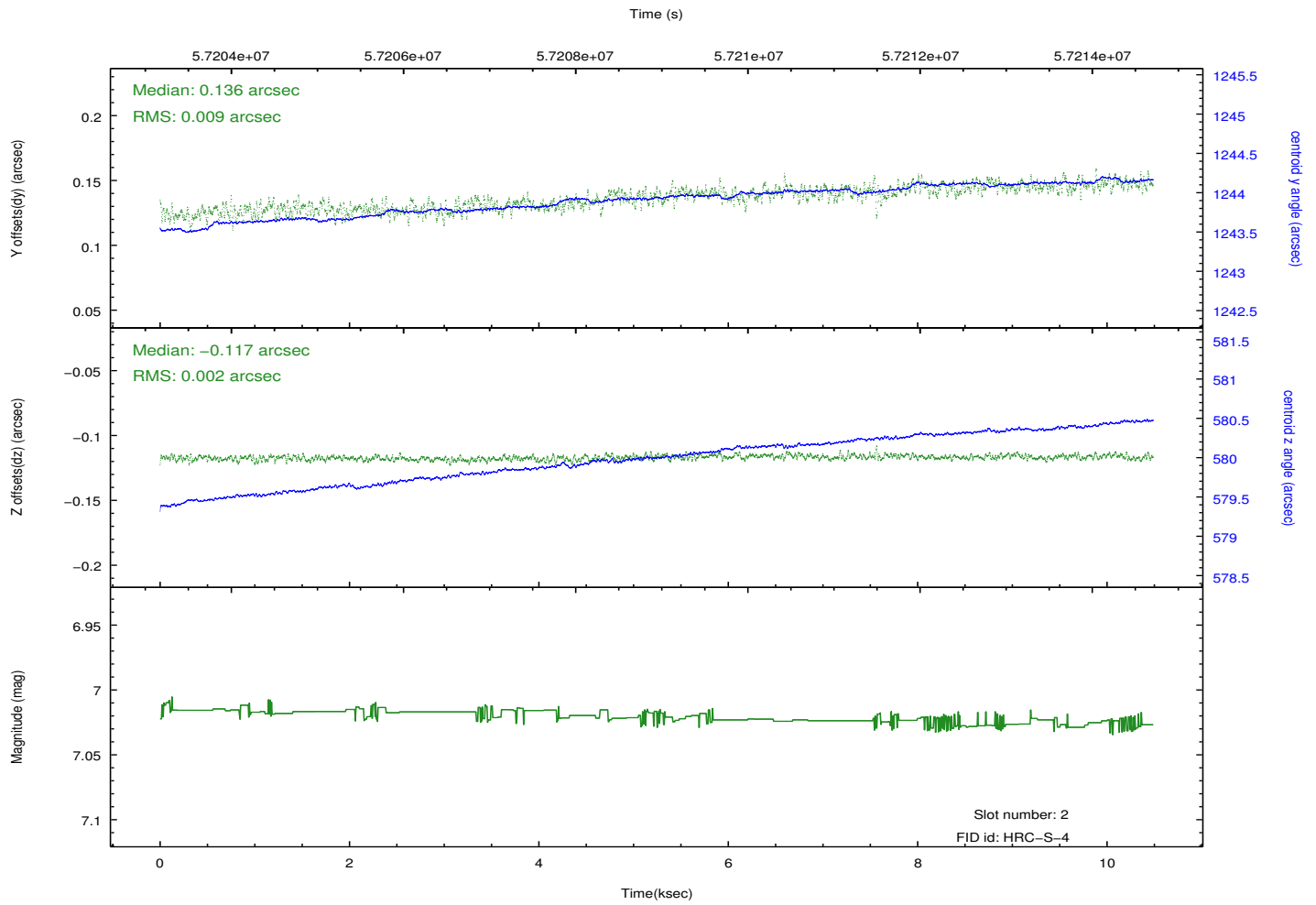
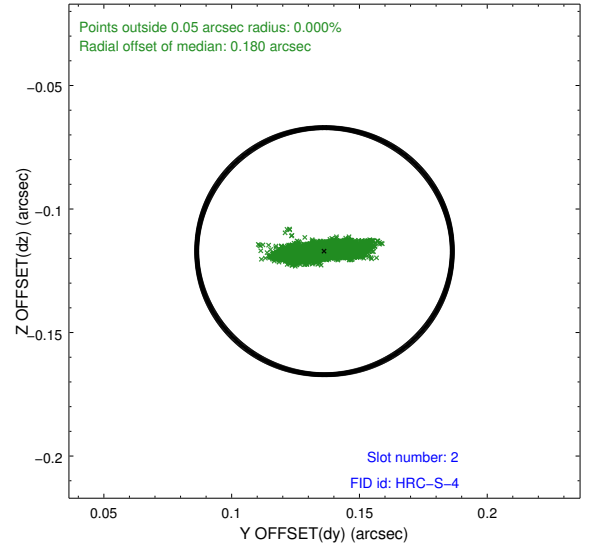
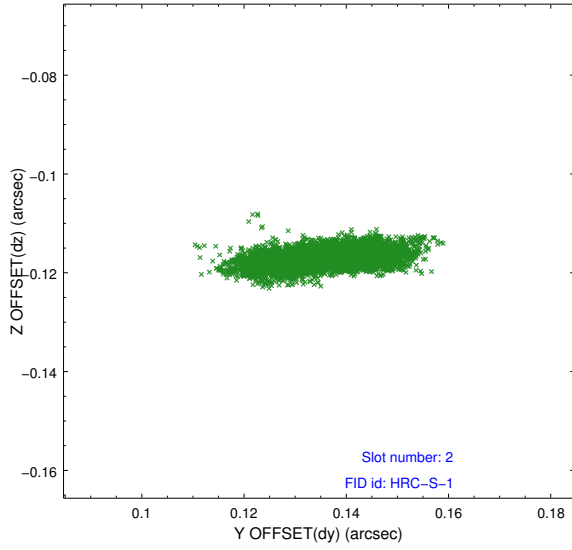
### 2.5.1 Slot 0



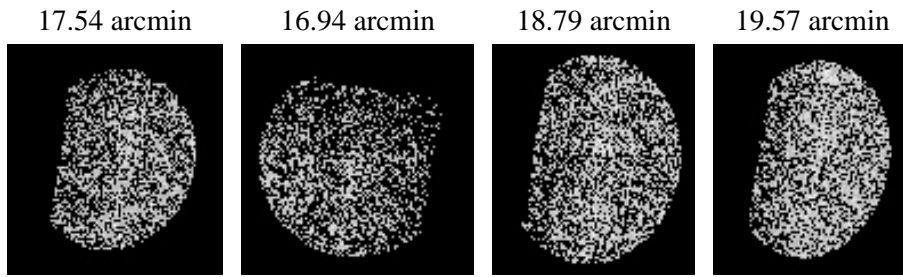
## 2.5.2 Slot 1



### 2.5.3 Slot 2



### 3 Point Sources



# A Summary

## A.1 Status

V&V Scientist	Joy Nichols
V&V Date (YYYY-MM-DD)	2009.11.30
V&V Edition	1
V&V Disposition and Status	OK
V&V Charge Time	9.915

## A.2 Comments

HRC standard candle observation. Off-axis.