

V&V Reference Report

L2 ASCDS Version : 8.4.3

Observation 14197 - L2 Version 2
Chandra X-Ray Center

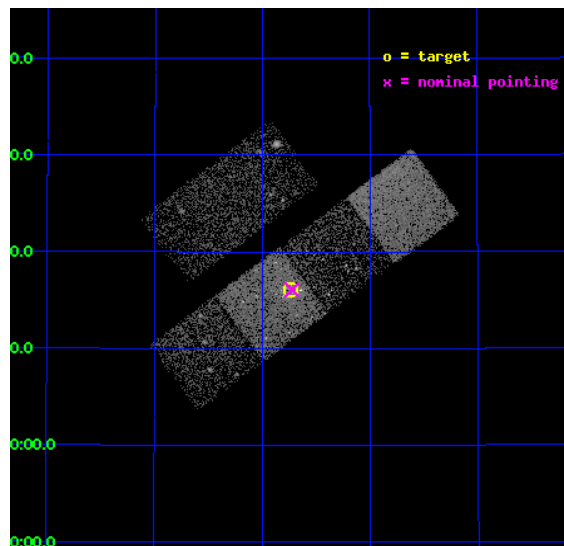
L2 Processing Date : Feb 22 2012

Contents

1	Front	2
2	OBI Primary	3
2.1	OBI	3
2.1.1	Images	3
2.1.2	Bias	3
2.1.3	Parameters	4
2.1.4	Events	4
2.2	Compared Parameters	5
2.3	Aspect	6
2.4	Star Slots	9
2.4.1	Slot 3	9
2.4.2	Slot 4	10
2.4.3	Slot 5	11
2.4.4	Slot 6	12
2.4.5	Slot 7	13
2.5	FID Slots	14
2.5.1	Slot 0	14
2.5.2	Slot 1	15
2.5.3	Slot 2	16
3	OBI Secondary	17
3.1	OBI	17
3.1.1	Images	17
3.1.2	Bias	17
3.1.3	Parameters	18
3.1.4	Events	18
A	Summary	19
A.1	Status	19
A.2	Comments	19

1 Front

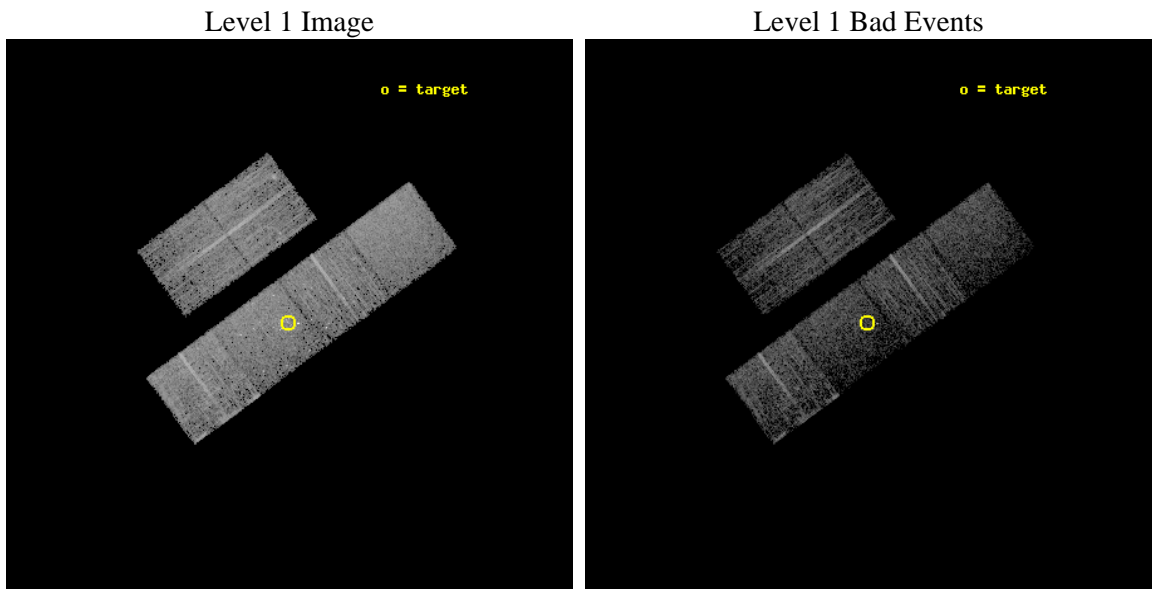
seq_num	601020	Sequence number
obs_id	14197	Observation id
title	M31*: A Resolved Low-Luminosity Accretion Flow Surrounding a Newly Active LLAGN (HRC/GTO)	Proposal title
observer	Dr Stephen Murray	Principal investigator
object	M31*	Source name
dtcycle	0	
cycle	P	events are from which exps? P[primary] S[econdar]
ra_targ	10.685	Observer's specified target RA [deg]
dec_targ	41.268972	Observer's specified target Dec [deg]
ra_nom	10.681236769597	Nominal RA [deg]
dec_nom	41.267879049506	Nominal Dec [deg]
roll_nom	143.58548747169	Nominal Roll [deg]
revision	2	Processing version of data
ontime	8914.6821380258	Sum of GTIs [s]
livetime	1403.3860046848	Livetime [s]
ontime2	8914.6821380258	Sum of GTIs [s]
ontime3	8914.6821479201	Sum of GTIs [s]
ontime5	8914.6821380258	Sum of GTIs [s]
ontime6	8914.6821380258	Sum of GTIs [s]
ontime7	8914.6821380258	Sum of GTIs [s]
ontime8	8914.6821479201	Sum of GTIs [s]
l2events	32926	Number of level 2 events



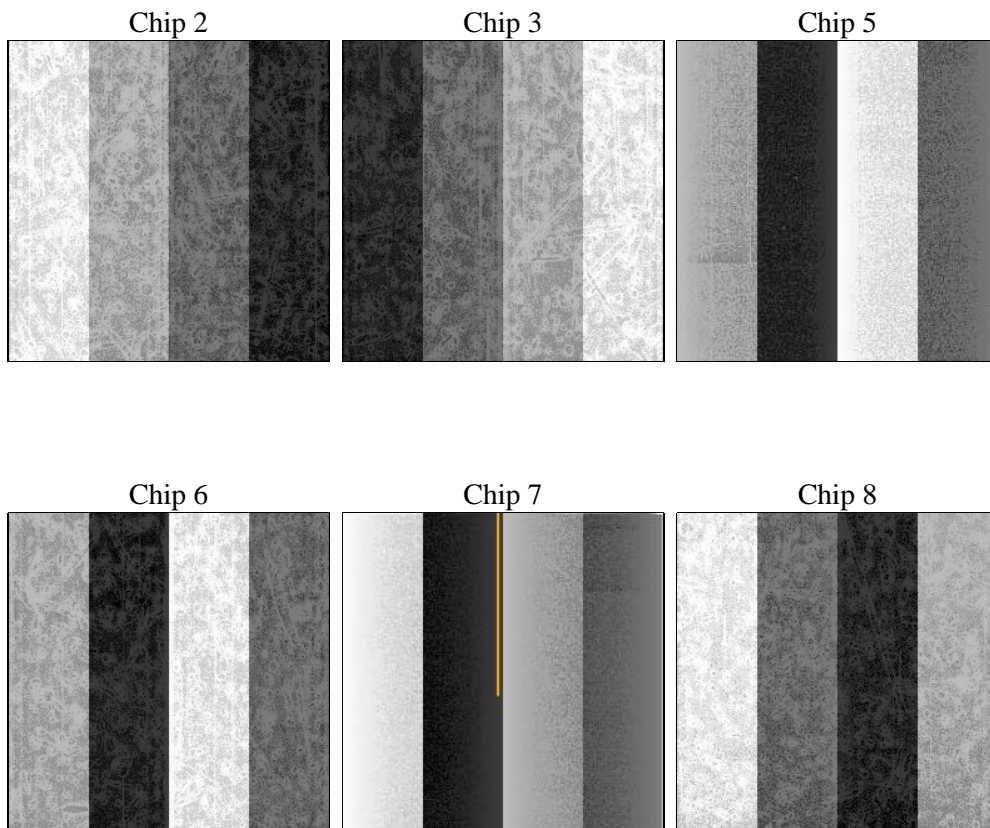
2 OBI Primary

2.1 OBI

2.1.1 Images



2.1.2 Bias



2.1.3 Parameters

obi_num	0	Obi number	sched_exp_time	46984.681000	[s] Scheduled observation exposure time
ascdsver	8.4.3	Processing system revision	ontime	8914.6821380258	Sum of GTIs [s]
caldbver	4.4.8	 	ontime2	8914.6821380258	Sum of GTIs [s]
date	2012-02-22T08:10:03	Date and time of file creation	ontime3	8914.6821479201	Sum of GTIs [s]
revision	2	Processing version of data	ontime5	8914.6821380258	Sum of GTIs [s]
			ontime6	8914.6821380258	Sum of GTIs [s]
			ontime7	8914.6821380258	Sum of GTIs [s]
			ontime8	8914.6821479201	Sum of GTIs [s]
			l1events	189556	Number of level 1 events

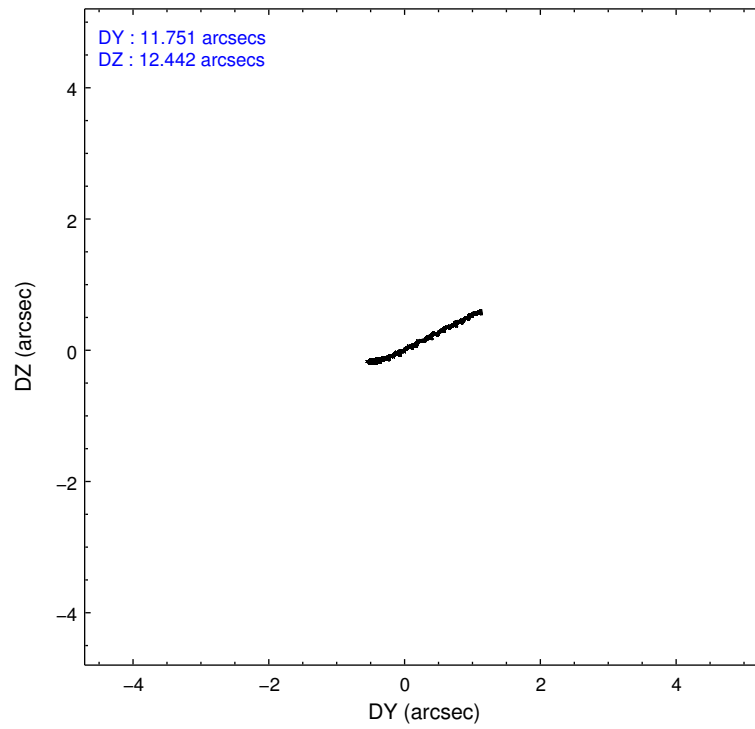
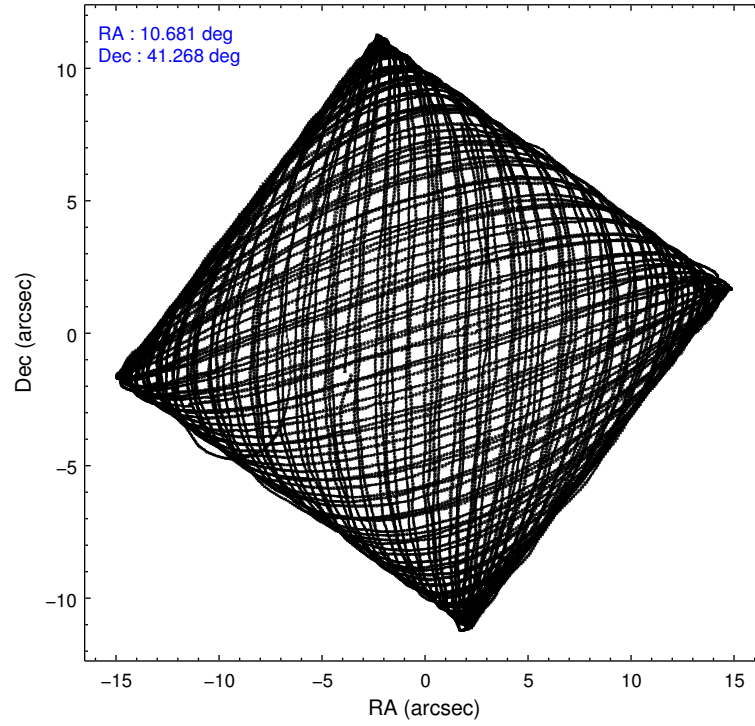
2.1.4 Events

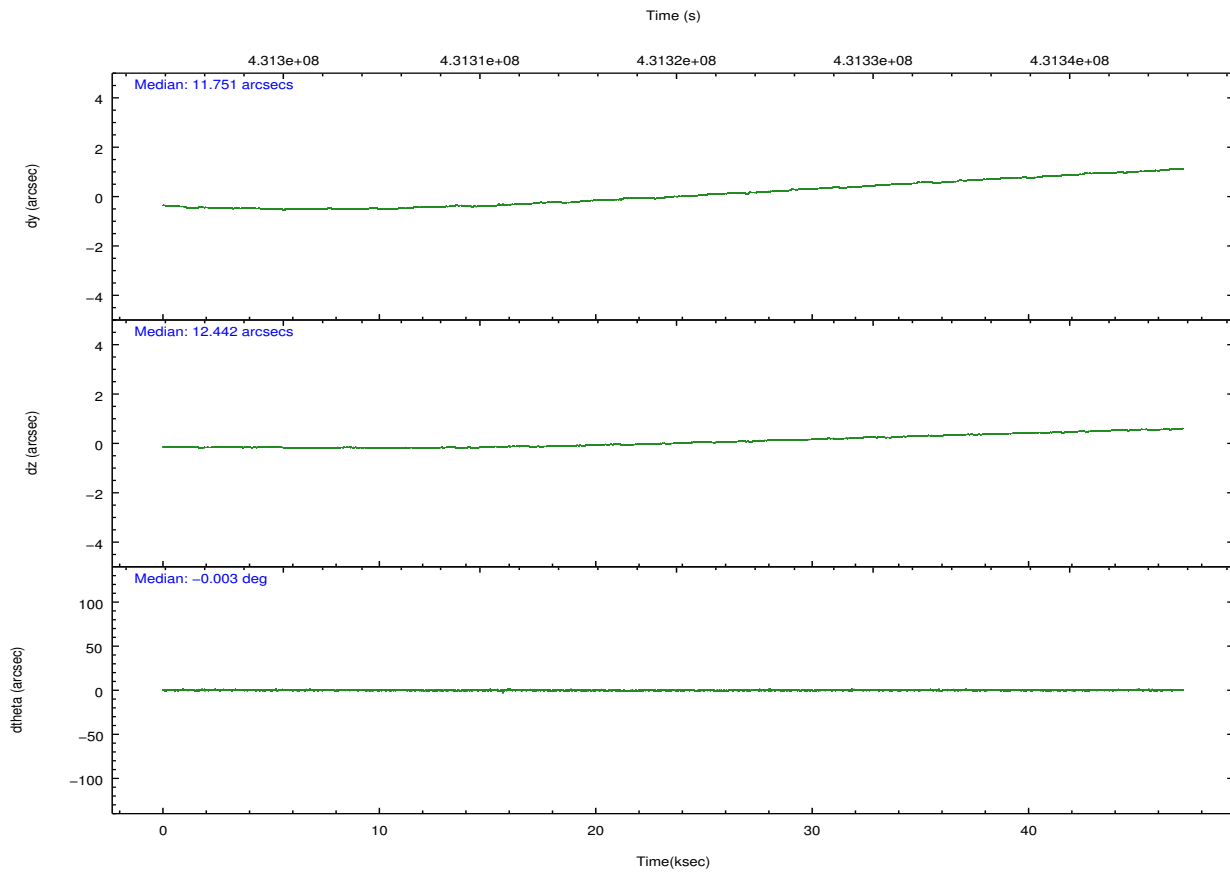
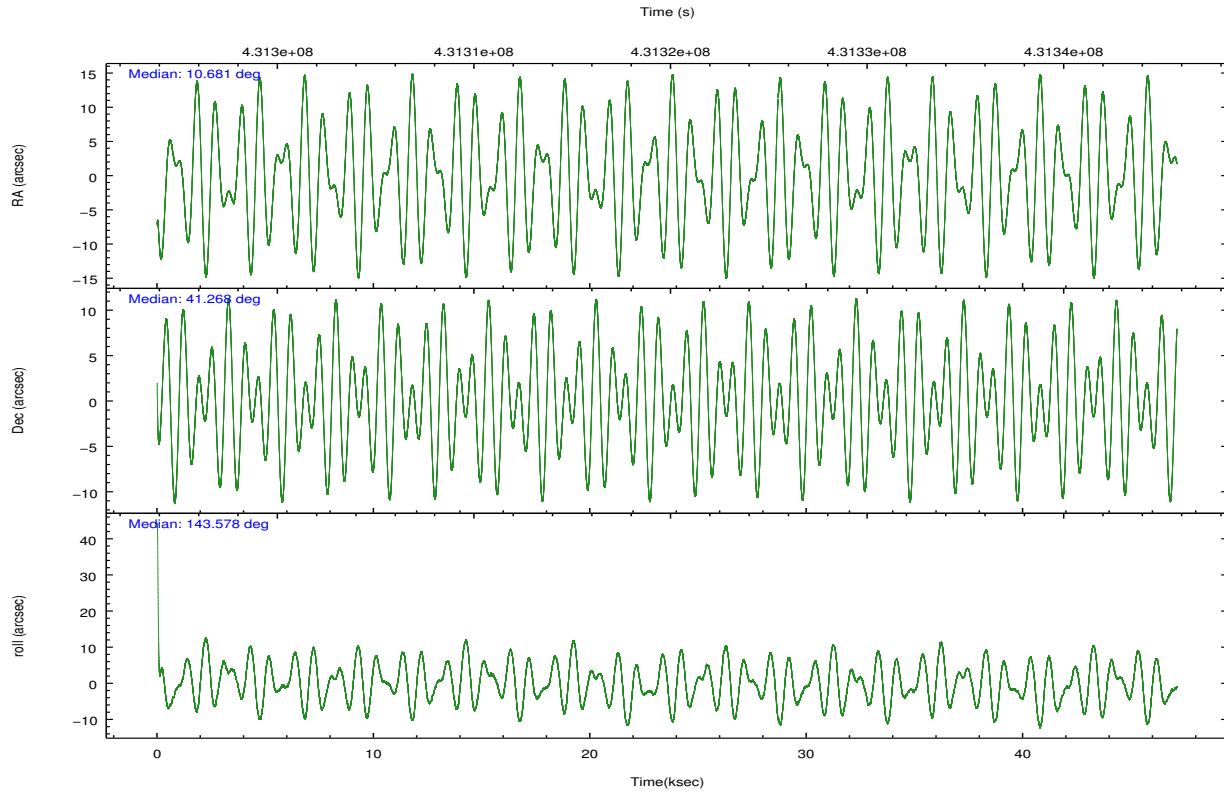
	ccd 2	ccd 3	ccd 5	ccd 6	ccd 7	ccd 8		ccd 2	ccd 3	ccd 5	ccd 6	ccd 7	ccd 8
level 1 events	32172	26634	31837	30471	31795	36647	grade 0 events	1013	580	686	1470	1920	1671
rejected events	29278	24376	20247	26969	19480	30390		3%	2%	2%	4%	6%	4%
rejected %	91%	91%	63%	88%	61%	82%	grade 1 events	13	5	45	23	42	18
								0%	0%	0%	0%	0%	0%
							grade 2 events	730	606	3241	768	3031	1510
								2%	2%	10%	2%	9%	4%
							grade 3 events	333	314	478	369	1245	710
								1%	1%	1%	1%	3%	1%
							grade 4 events	311	249	422	330	1176	648
								0%	0%	1%	1%	3%	1%
							grade 5 events	1068	1090	2479	1150	2471	1513
								3%	4%	7%	3%	7%	4%
							grade 6 events	510	509	6775	568	4960	1718
								1%	1%	21%	1%	15%	4%
							grade 7 events	28194	23281	17711	25793	16950	28859
								87%	87%	55%	84%	53%	78%

2.2 Compared Parameters

Parameter	Planned	Actual	Parameter	Planned	Actual
Instrument	ACIS	ACIS	Obspar format version number	7	7
Detector	ACIS-235678	ACIS-235678	Obspar file type	PREDICTED	ACTUAL
Grating	NONE	NONE	Obspar update status	NONE	UPDATED
Data mode	FAINT	FAINT	CCD I0 on	N	N
Observation mode	POINTING	POINTING	CCD I1 on	N	N
[deg] Pointing RA	10.717446	10.6812367695971	CCD I2 on	Y	Y
[deg] Pointing Dec	41.265189	41.26787904950593	CCD I3 on	Y	Y
[deg] Pointing Roll	143.404965	143.5854874716854	CCD S0 on	N	N
[mm] SIM focus pos	-0.684267	-0.6828225247311905	CCD S1 on	O2	Y
[mm] SIM defocus	0	0.001444936568705701	CCD S2 on	Y	Y
[mm] SIM translation stage pos	-190.132523	-190.145094680475	CCD S3 on	Y	Y
[mm] SIM translation stage offset	0	0.01257209746719923	CCD S4 on	O1	Y
[s] Observation start time (MET)	431296403.184000	431295214.74534	CCD S5 on	N	N
Observation start date	2011-09-01T20:32:17	2011-09-01T20:13:34	Number of optional ACIS chips dropped	0	0
[s] Observation end time (MET)	431343388.184000	431343613.71038	On-chip summing requested	N	N
Observation end date	2011-09-02T09:35:22	2011-09-02T09:40:13	Subarray requested	NONE	NONE
Read mode	TIMED	TIMED	Alternating exposures requested	Y	Y
			[s] Primary exposure time	0.600000	0.6
			[s] Secondary exposure time	0.000000	3.2
			Duty cycle	5	5

2.3 Aspect



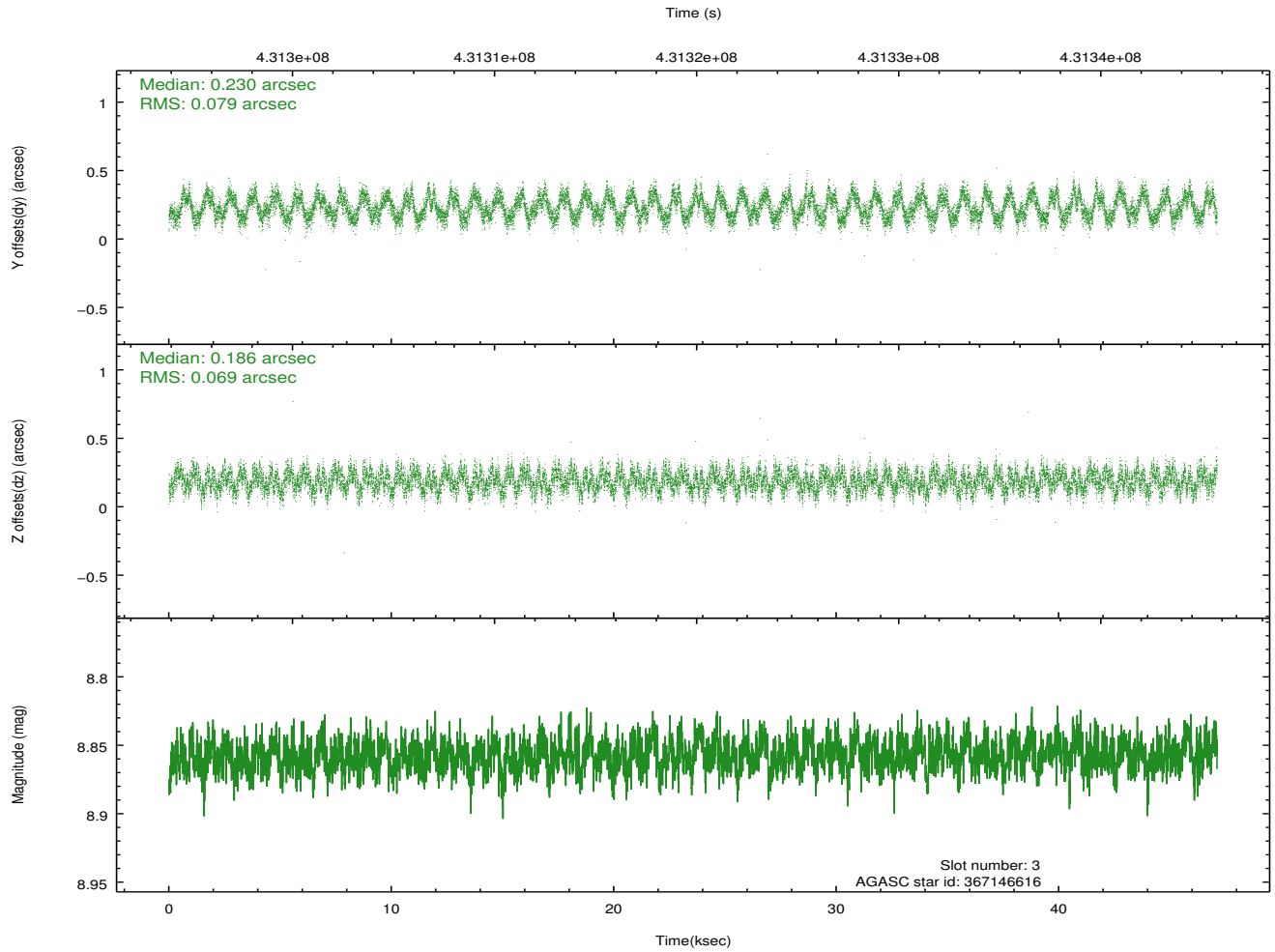
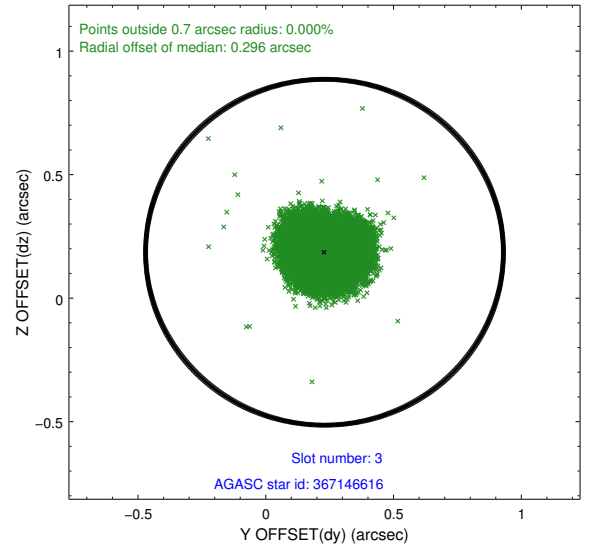
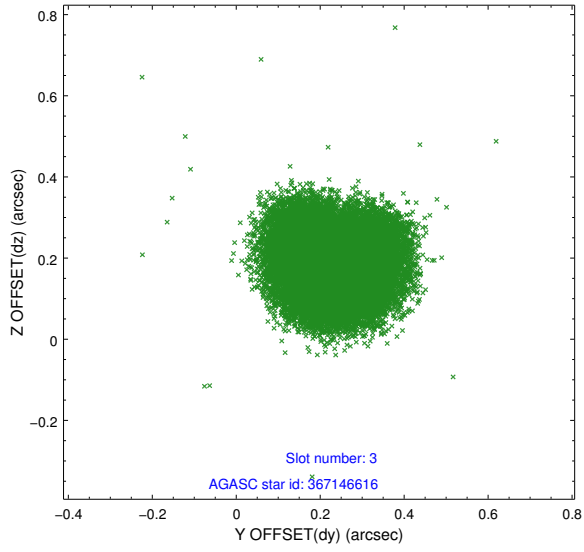


Slot Statistics

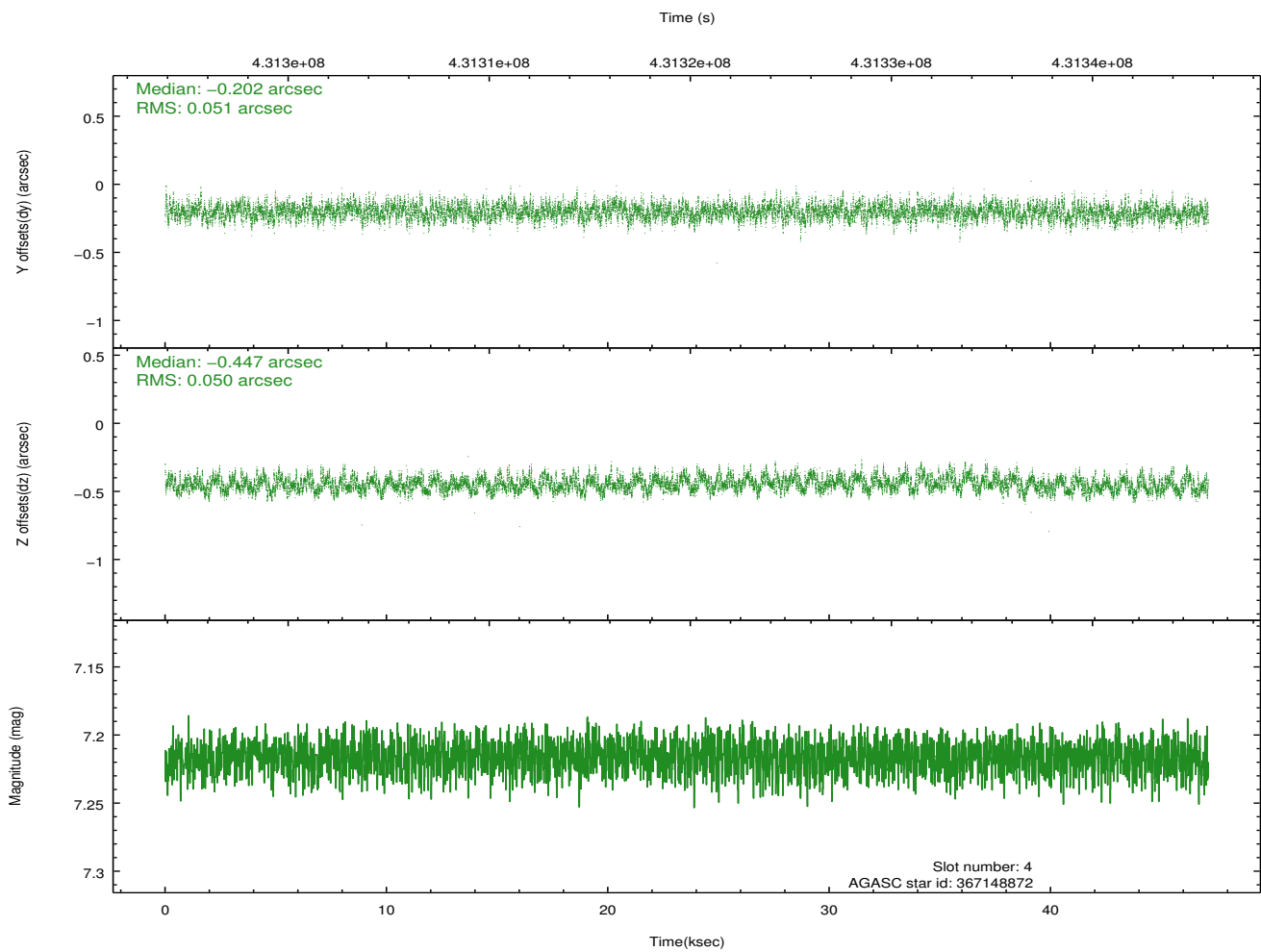
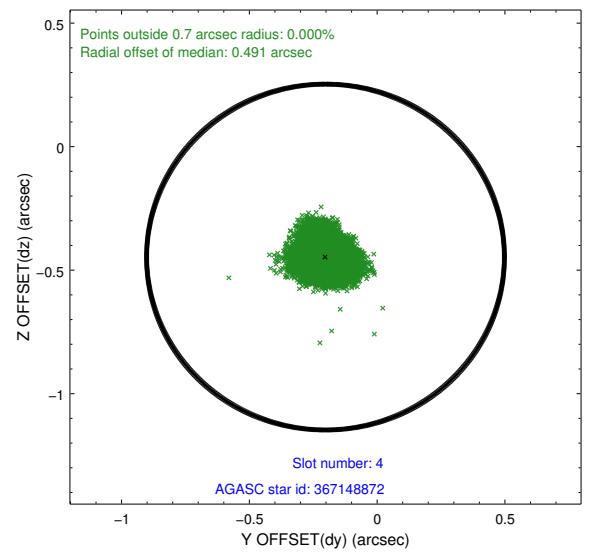
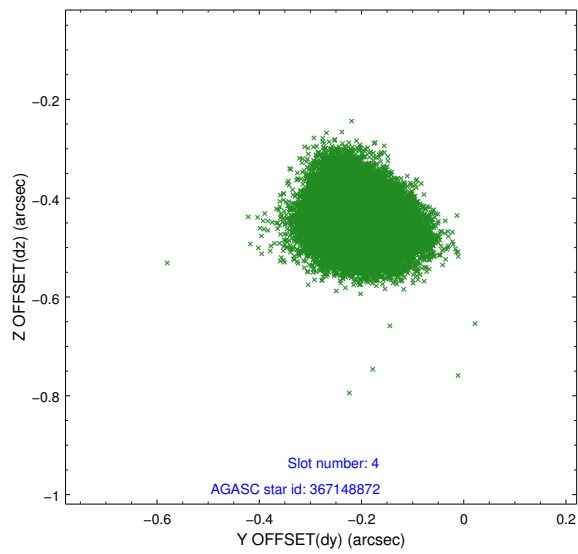
slot	status	id	mag	n_pts	med_dy	med_dz	dr1	dr2	ra	dec	mean_y	mean_z
0	FID	ACIS-S-2	6.99	11492	-0.035	-0.030	0.014	0.020	0.000000	0.000000	-764.79	-1733.75
1	FID	ACIS-S-4	7.08	11494	0.161	0.026	0.008	0.015	0.000000	0.000000	2148.71	174.76
2	FID	ACIS-S-5	7.12	11494	-0.153	0.014	0.018	0.029	0.000000	0.000000	-1817.74	168.45
3	GUIDE	367146616	8.86	22977	0.230	0.186	0.114	0.168	11.418645	41.190163	-1681.03	-921.54
4	GUIDE	367148872	7.22	22985	-0.202	-0.447	0.077	0.121	10.505940	40.688258	-774.89	2011.53
5	GUIDE	367657896	9.01	22969	0.068	0.053	0.102	0.163	11.197765	41.313576	-936.40	-916.72
6	GUIDE	367663272	9.27	22846	-0.147	-0.030	0.144	0.230	10.656279	41.699429	1064.63	-1155.88
7	GUIDE	367657272	8.42	22976	0.060	0.239	0.086	0.138	11.834471	41.298907	-2341.04	-1913.97

2.4 Star Slots

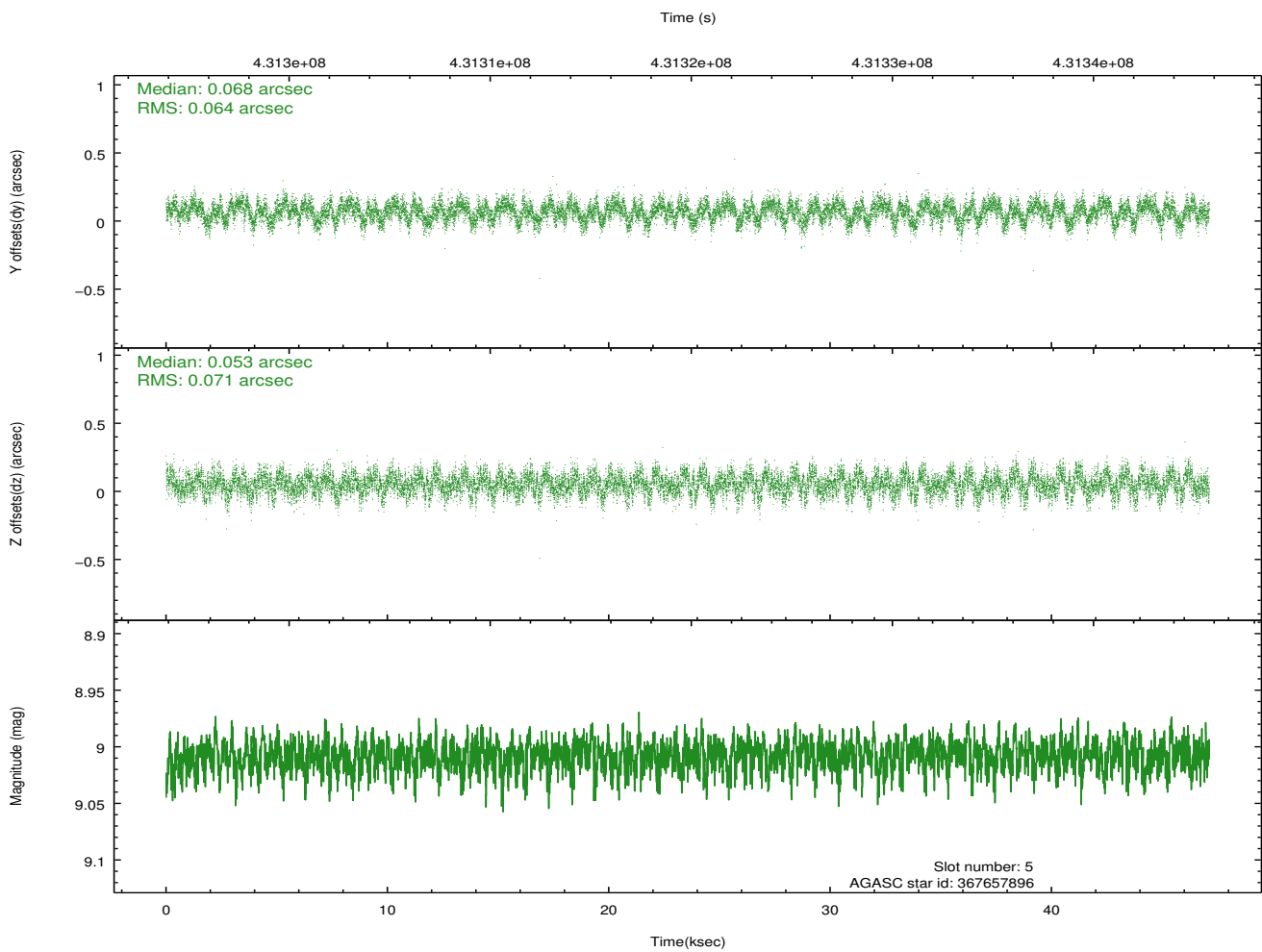
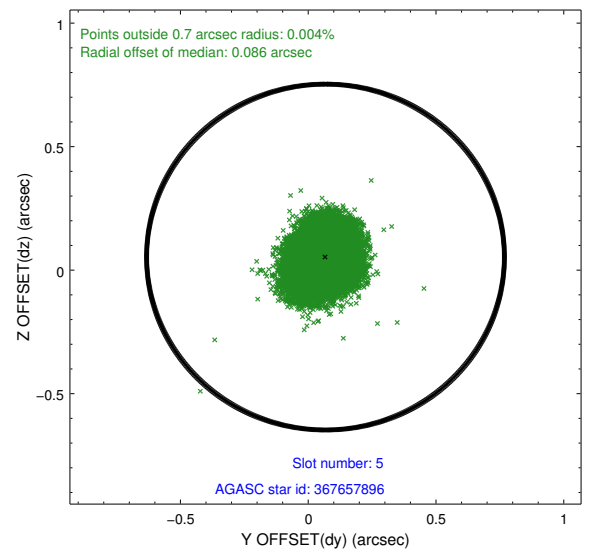
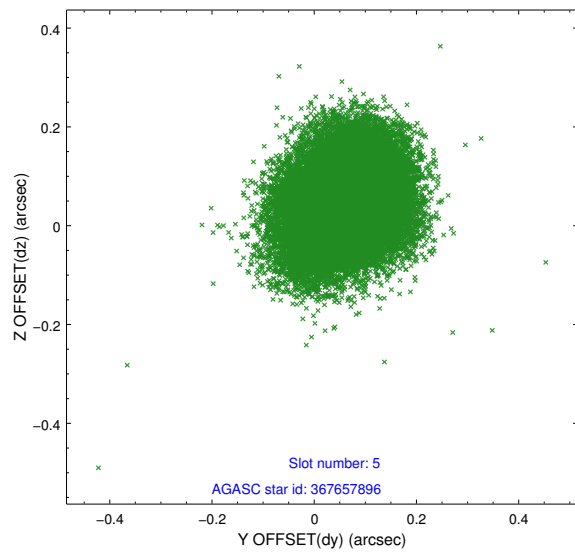
2.4.1 Slot 3



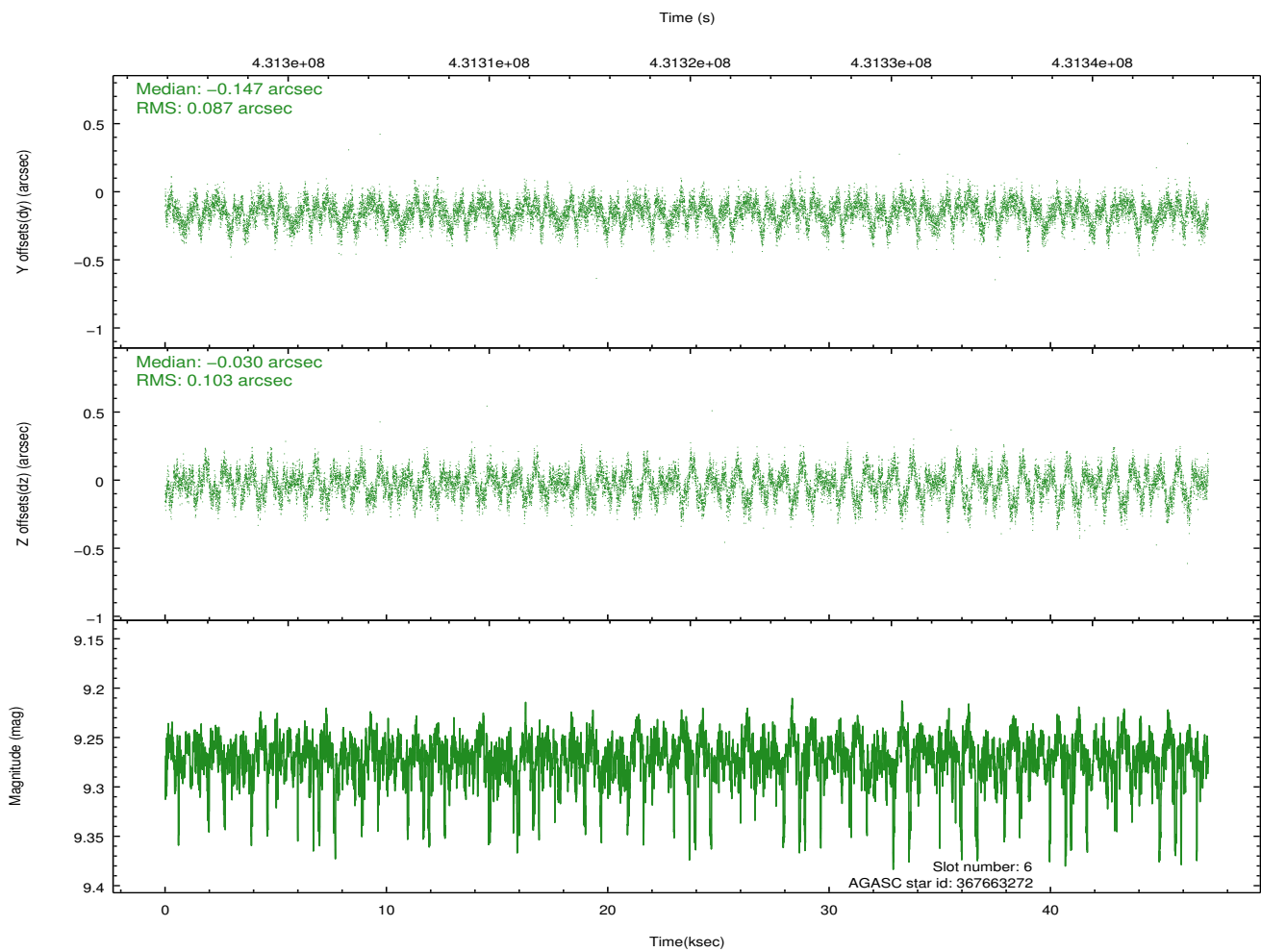
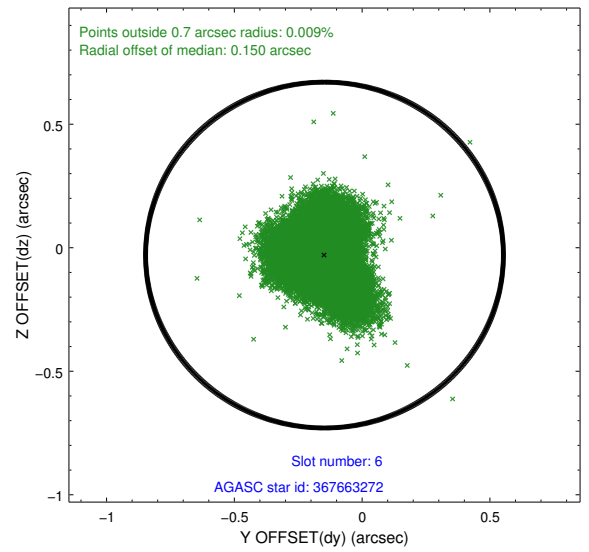
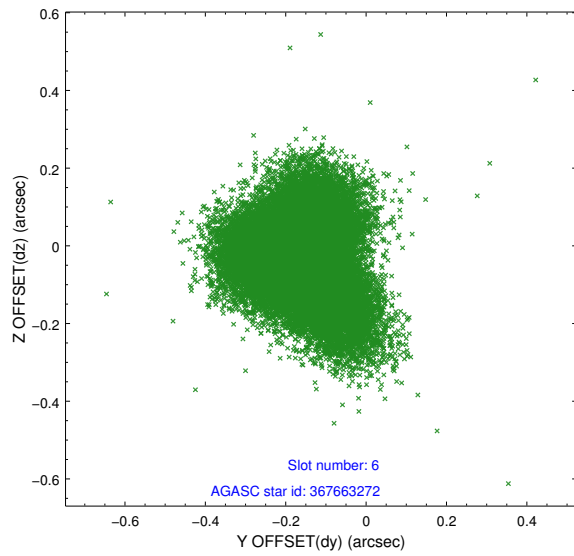
2.4.2 Slot 4



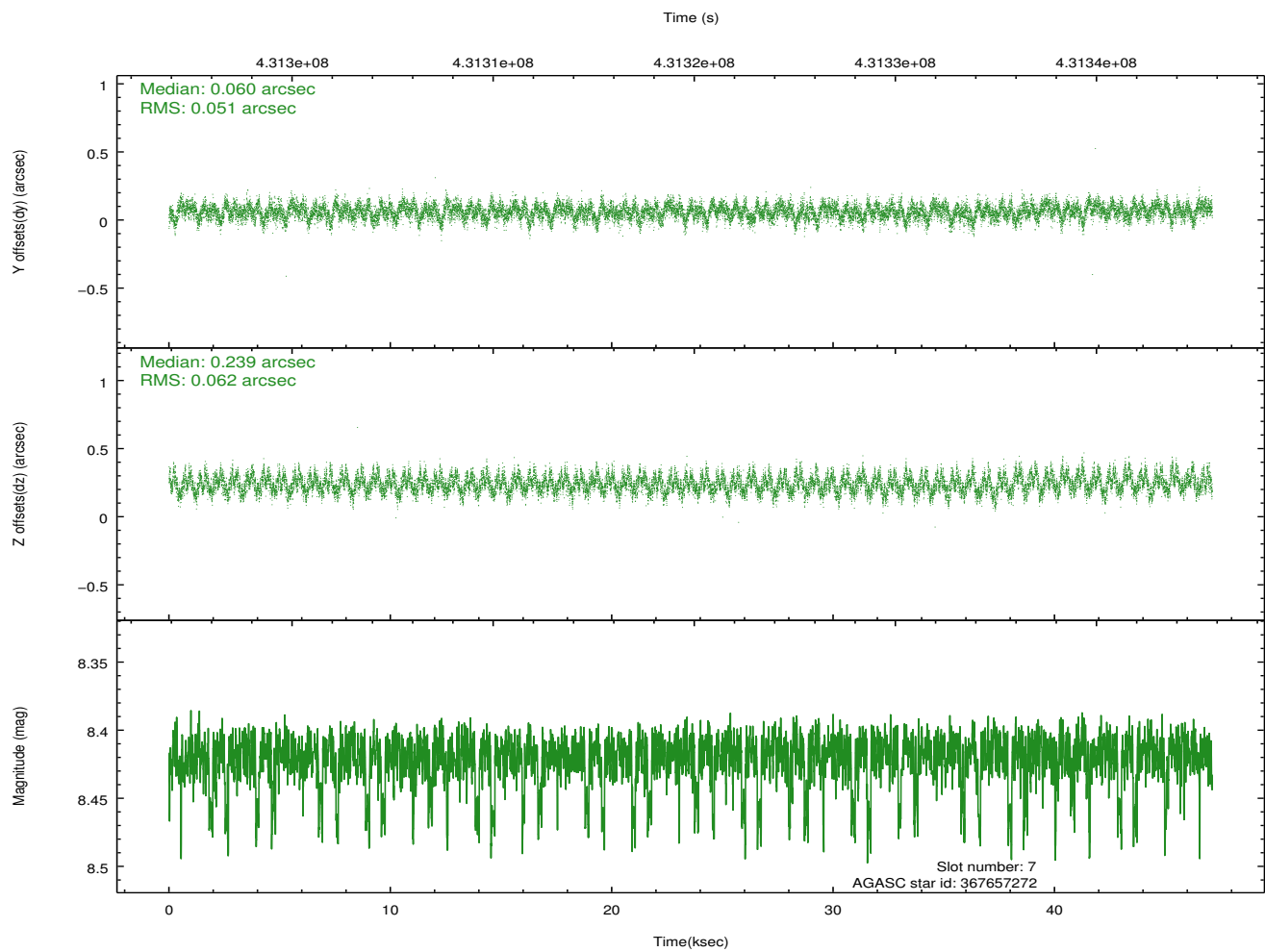
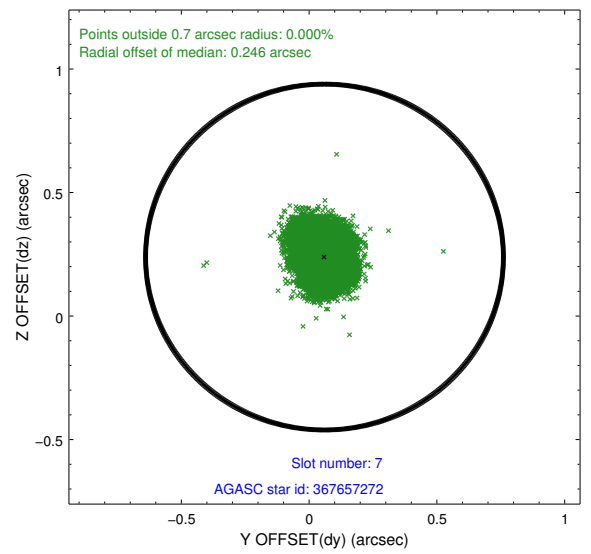
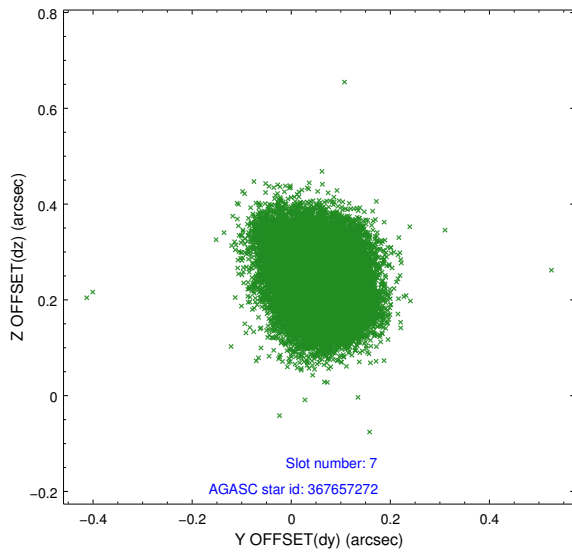
2.4.3 Slot 5



2.4.4 Slot 6

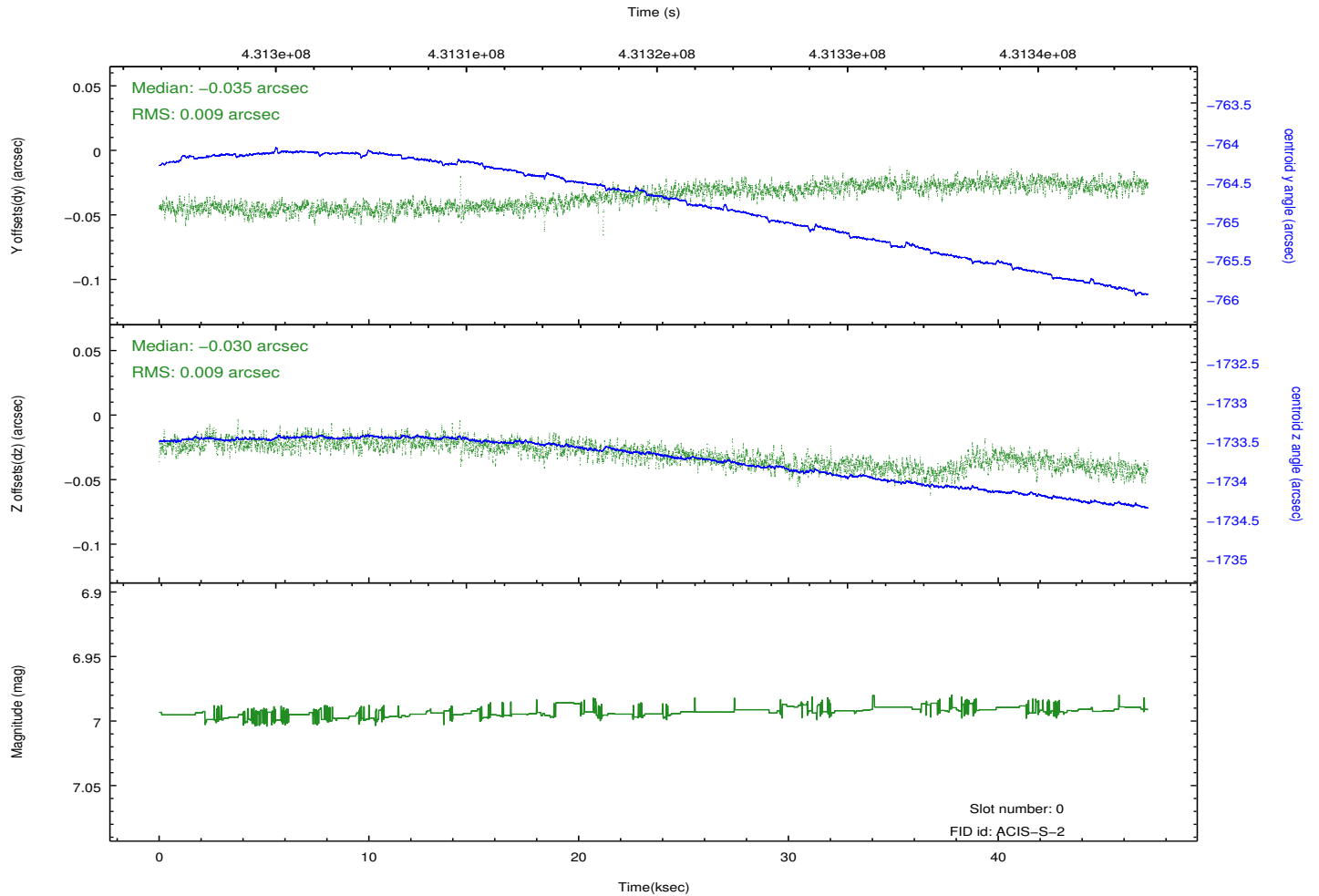
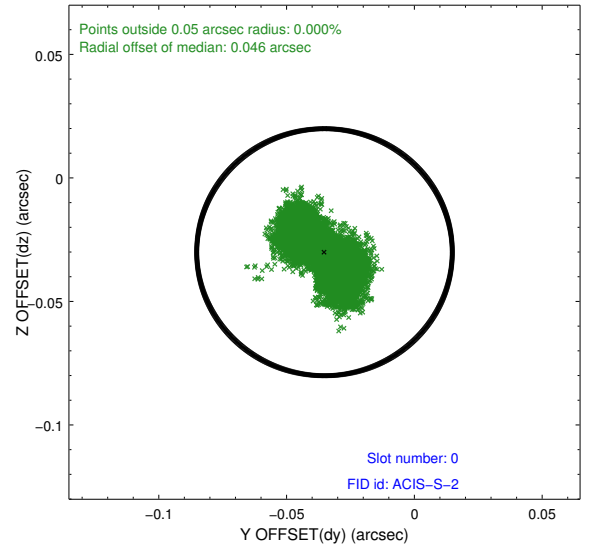
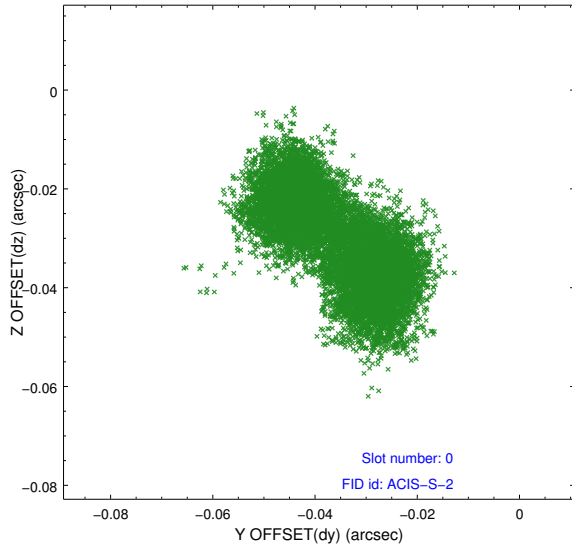


2.4.5 Slot 7

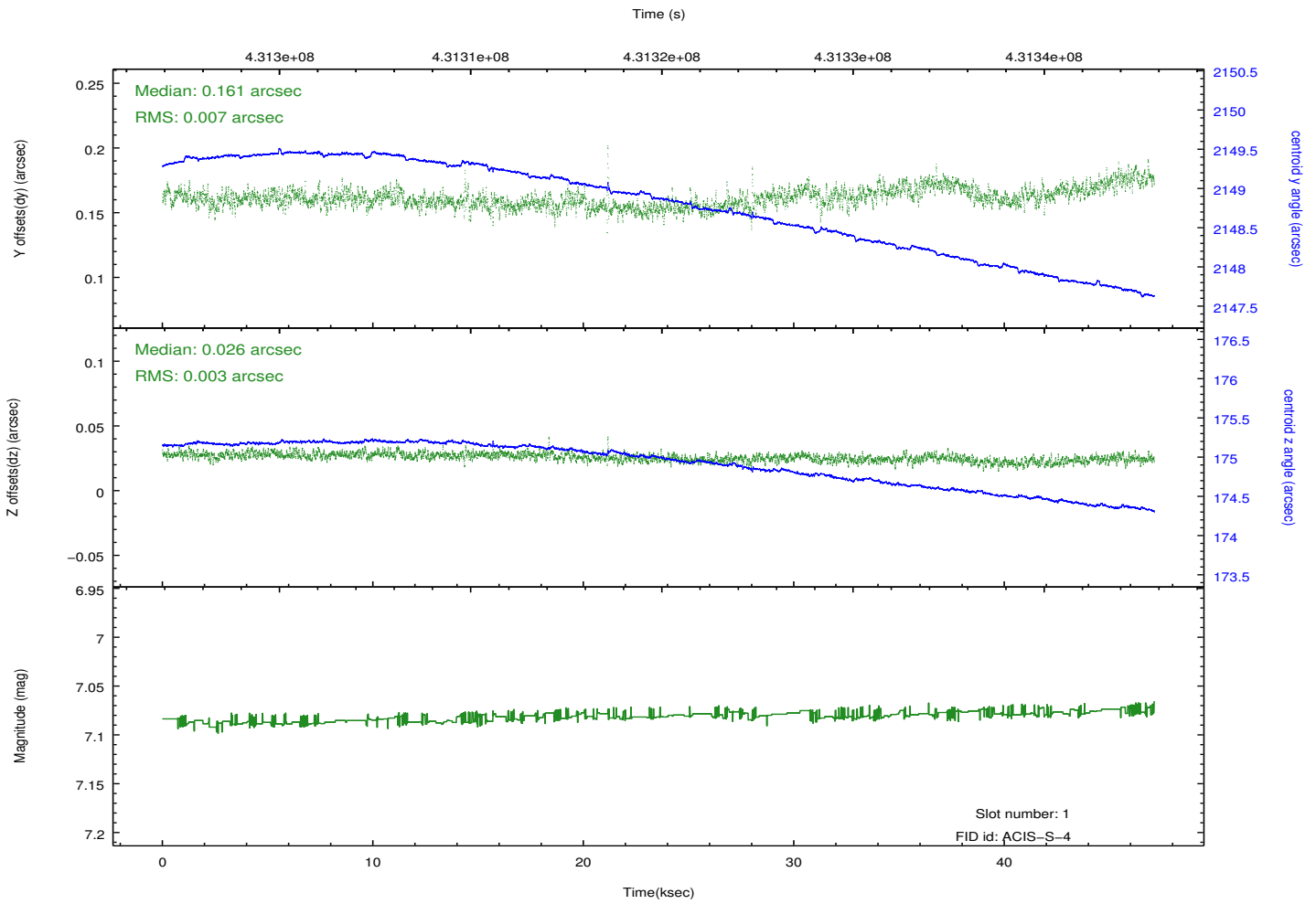
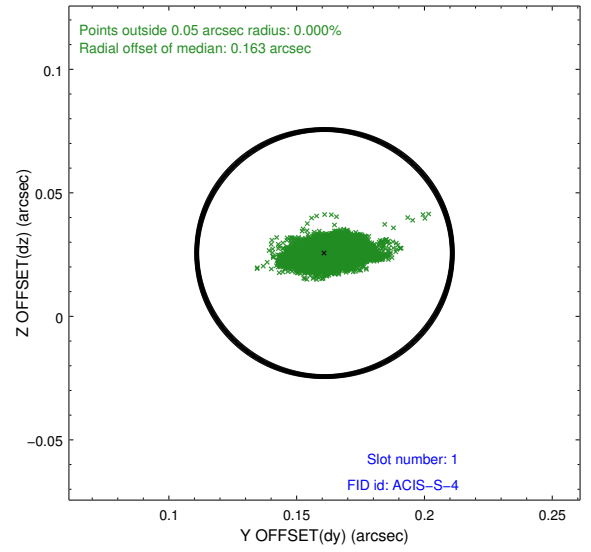
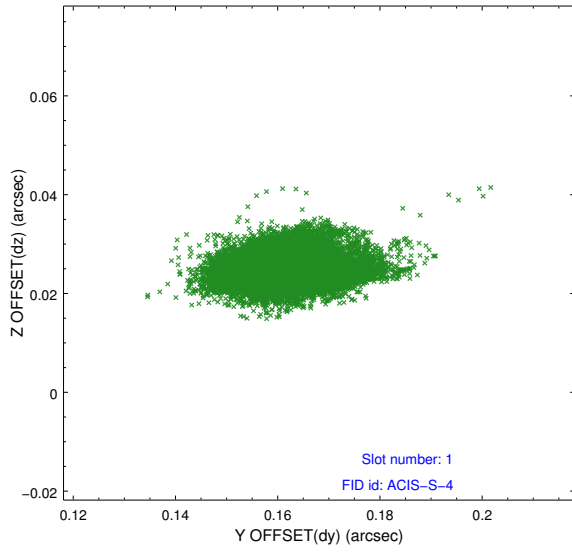


2.5 FID Slots

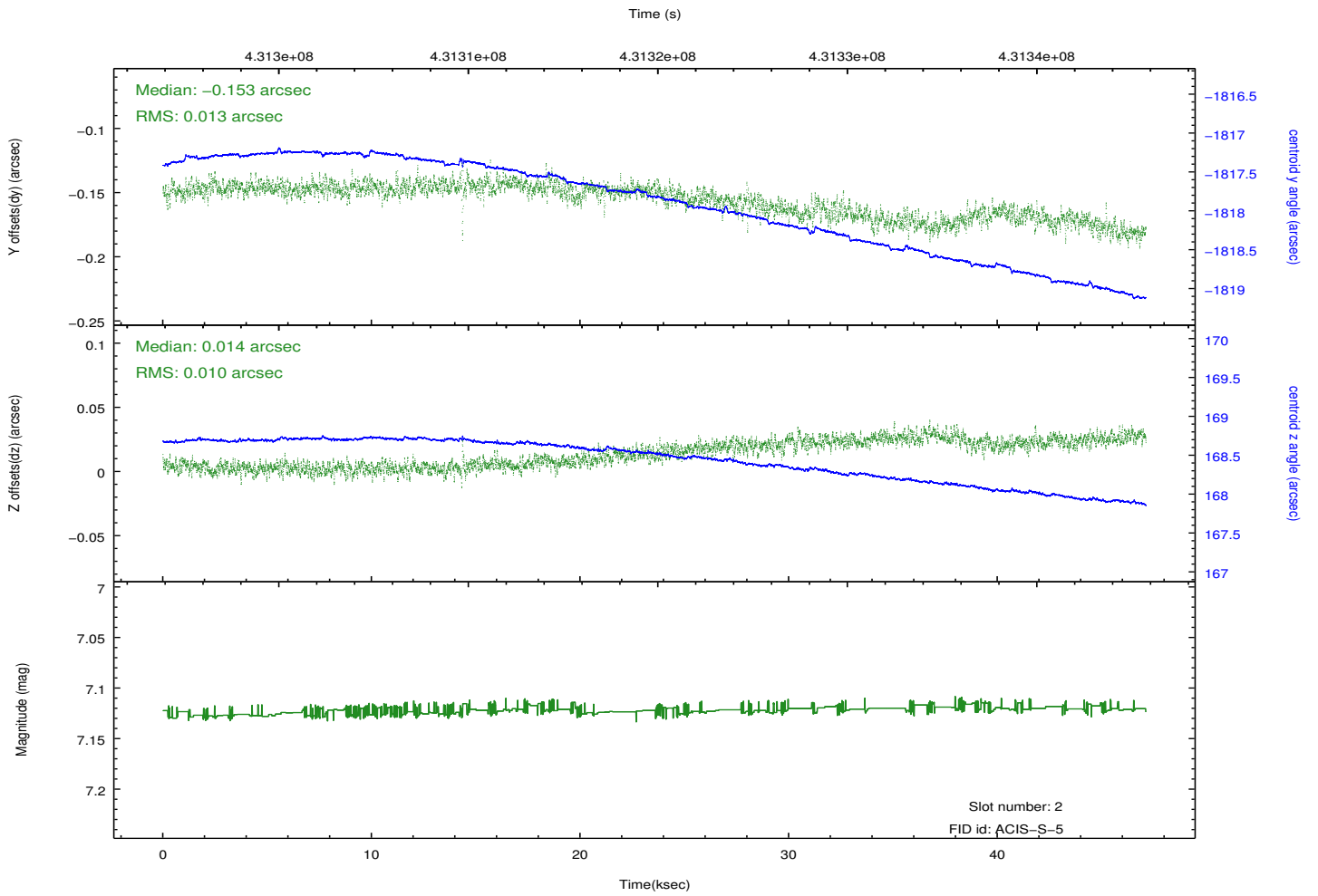
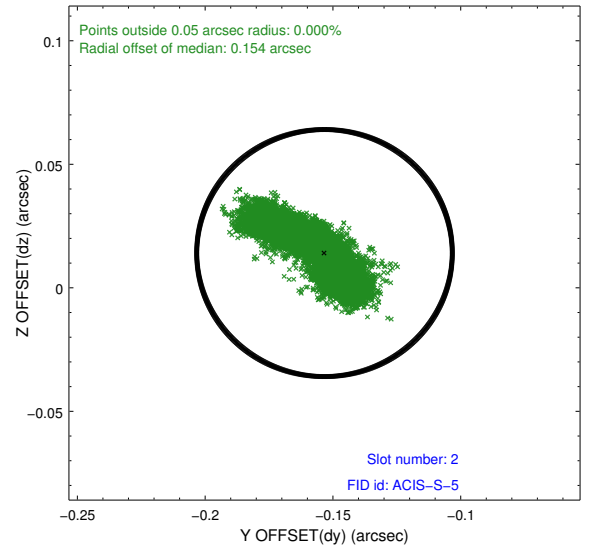
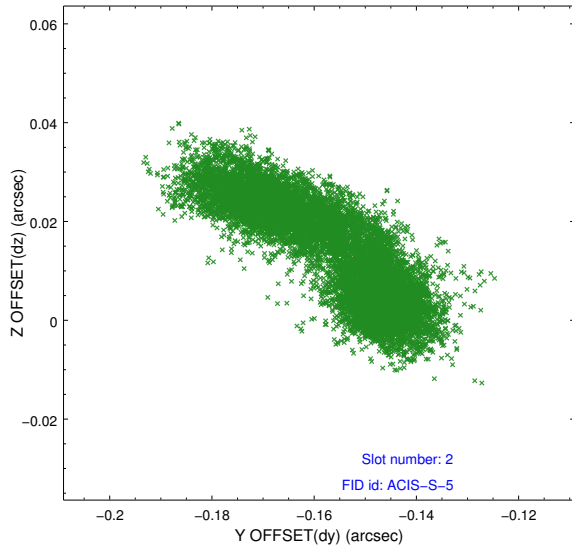
2.5.1 Slot 0



2.5.2 Slot 1



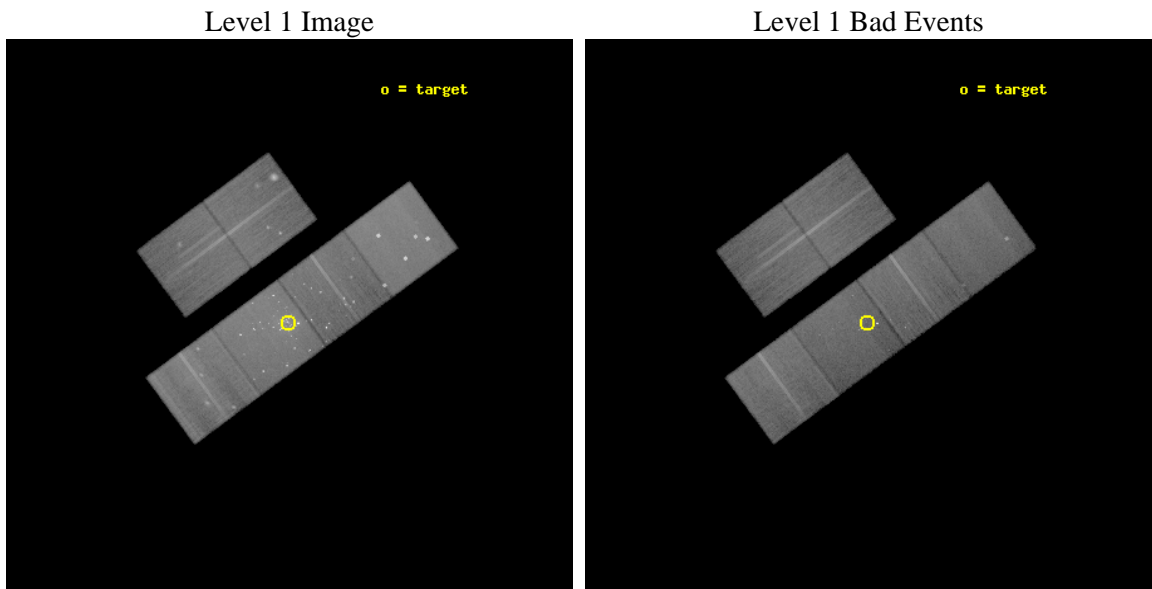
2.5.3 Slot 2



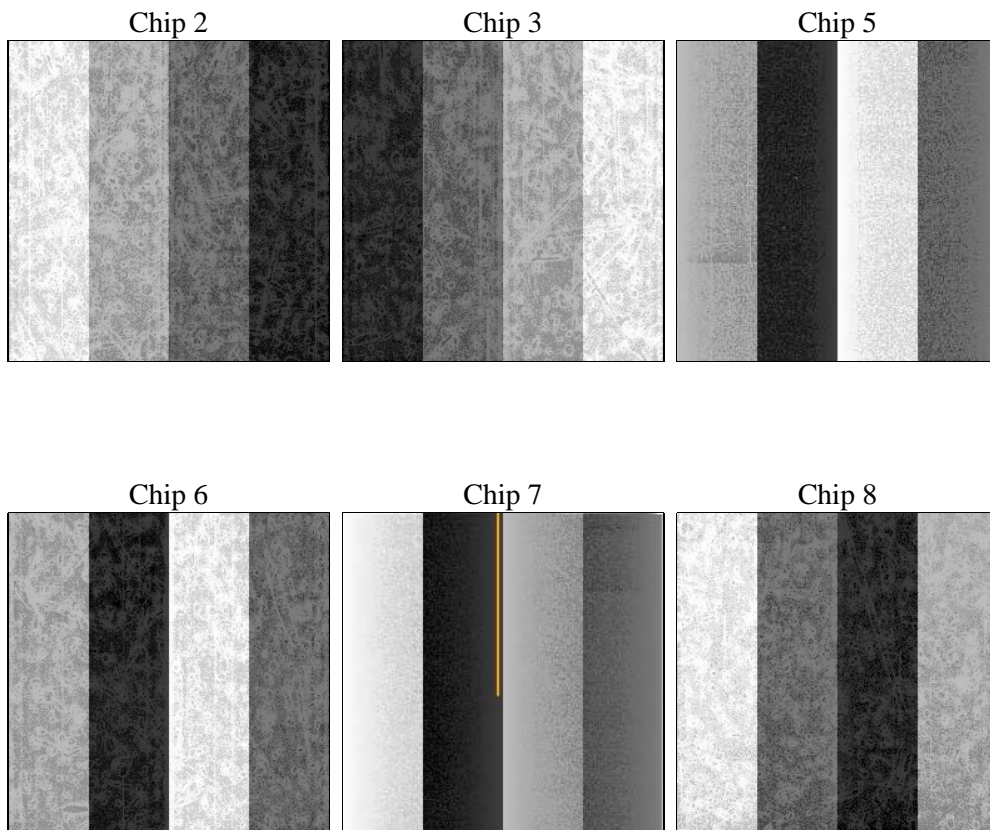
3 OBI Secondary

3.1 OBI

3.1.1 Images



3.1.2 Bias



3.1.3 Parameters

obi_num	0	Obi number	sched_exp_time	46984.681000	[s] Scheduled observation exposure time
ascdsver	8.4.3	Processing system revision	ontime	37940.023515701	Sum of GTIs [s]
caldbver	4.4.8	 	ontime2	37940.023382008	Sum of GTIs [s]
date	2012-02-22T08:23:00	Date and time of file creation	ontime3	37940.023288786	Sum of GTIs [s]
revision	2	Processing version of data	ontime5	37940.023378074	Sum of GTIs [s]
			ontime6	37940.023376703	Sum of GTIs [s]
			ontime7	37940.023515701	Sum of GTIs [s]
			ontime8	37940.0233953	Sum of GTIs [s]
			l1events	1918398	Number of level 1 events

3.1.4 Events

	ccd 2	ccd 3	ccd 5	ccd 6	ccd 7	ccd 8		ccd 2	ccd 3	ccd 5	ccd 6	ccd 7	ccd 8
level 1 events	265718	235632	420095	271088	410221	315644	grade 0 events	20358	10940	45675	31042	38040	27926
rejected events	225618	207954	197806	215901	181968	229305		7%	4%	10%	11%	9%	8%
rejected %	84%	88%	47%	79%	44%	72%	grade 1 events	196	161	1945	470	757	307
								0%	0%	0%	0%	0%	0%
							grade 2 events	7893	5704	63466	9231	51664	19616
								2%	2%	15%	3%	12%	6%
							grade 3 events	3192	2854	6496	3789	21892	8824
								1%	1%	1%	1%	5%	2%
							grade 4 events	3194	2893	6056	3822	21558	8270
								1%	1%	1%	1%	5%	2%
							grade 5 events	9874	11657	27395	11702	33750	16722
								3%	4%	6%	4%	8%	5%
							grade 6 events	5465	5292	100620	7313	95121	21712
								2%	2%	23%	2%	23%	6%
							grade 7 events	215546	196131	168442	203719	147439	212267
								81%	83%	40%	75%	35%	67%

A Summary

A.1 Status

V&V Scientist	Jen Lauer
V&V Date (YYYY-MM-DD)	2012.02.23
V&V Edition	1
V&V Disposition and Status	OK
V&V Charge Time	46.8547056519985

A.2 Comments