

V&V Reference Report

L2 ASCDS Version : 8.4.5

Observation 14467 - L2 Version 1
Chandra X-Ray Center

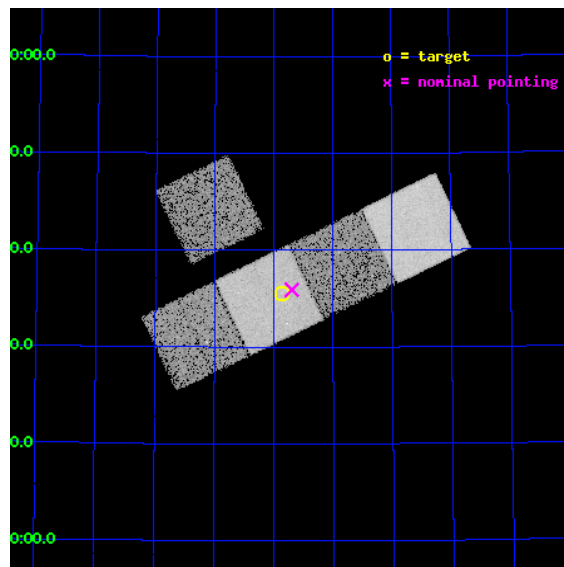
L2 Processing Date : Jul 29 2012

Contents

1	Front	2
2	OBI	3
2.1	OBI	3
2.1.1	Images	3
2.1.2	Bias	3
2.1.3	Parameters	4
2.1.4	Events	4
2.2	Compared Parameters	5
2.3	Aspect	6
2.4	Star Slots	9
2.4.1	Slot 3	9
2.4.2	Slot 4	10
2.4.3	Slot 5	11
2.4.4	Slot 6	12
2.4.5	Slot 7	13
2.5	FID Slots	14
2.5.1	Slot 0	14
2.5.2	Slot 1	15
2.5.3	Slot 2	16
A	Summary	17
A.1	Status	17
A.2	Comments	17

1 Front

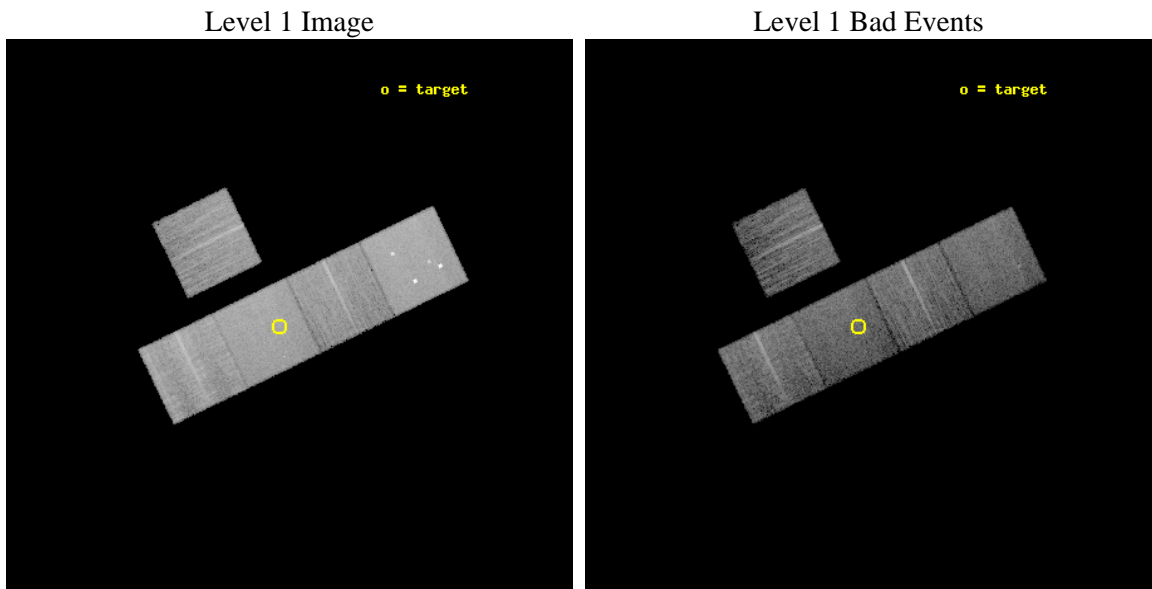
seq_num	501603	Sequence number
obs_id	14467	Observation id
title	Guitar with a bow: a jet-like X-ray-emitting feature associated a fast-moving pulsar	Proposal title
observer	Prof. Q. Daniel Wang	Principal investigator
object	B2224+65	Source name
dtycycle	0	
cycle	P	events from which exps? Prim/Second/Both
ra_targ	336.46625	Observer's specified target RA [deg]
dec_targ	65.593083	Observer's specified target Dec [deg]
ra_nom	336.42375623455	Nominal RA [deg]
dec_nom	65.598764024049	Nominal Dec [deg]
roll_nom	154.19532989456	Nominal Roll [deg]
revision	1	Processing version of data
ontime	15067.816412687	Sum of GTIs [s]
livetime	14870.94429849	Livetime [s]
ontime3	15067.693292677	Sum of GTIs [s]
ontime5	15067.775372684	Sum of GTIs [s]
ontime6	15067.734332681	Sum of GTIs [s]
ontime7	15067.816412687	Sum of GTIs [s]
ontime8	15067.652252674	Sum of GTIs [s]
l2events	131020	Number of level 2 events



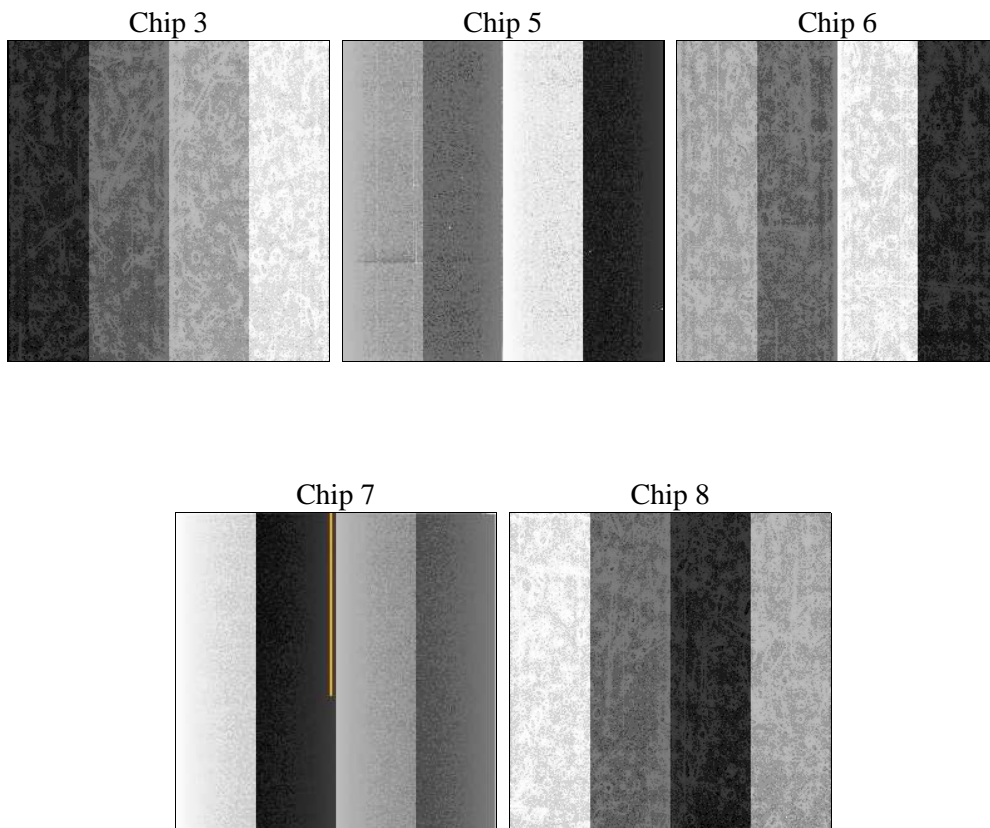
2 OBI

2.1 OBI

2.1.1 Images



2.1.2 Bias



2.1.3 Parameters

obi_num	0	Obi number	sched_exp_time	15002.939000	[s] Scheduled observation exposure time
ascdsver	8.4.5	Processing system revision	ontime	15067.816412687	Sum of GTIs [s]
caldbver	4.5.1	 	ontime3	15067.693292677	Sum of GTIs [s]
date	2012-07-29T22:22:37	Date and time of file creation	ontime5	15067.775372684	Sum of GTIs [s]
revision	1	Processing version of data	ontime6	15067.734332681	Sum of GTIs [s]
			ontime7	15067.816412687	Sum of GTIs [s]
			ontime8	15067.652252674	Sum of GTIs [s]
			l1events	496435	Number of level 1 events

2.1.4 Events

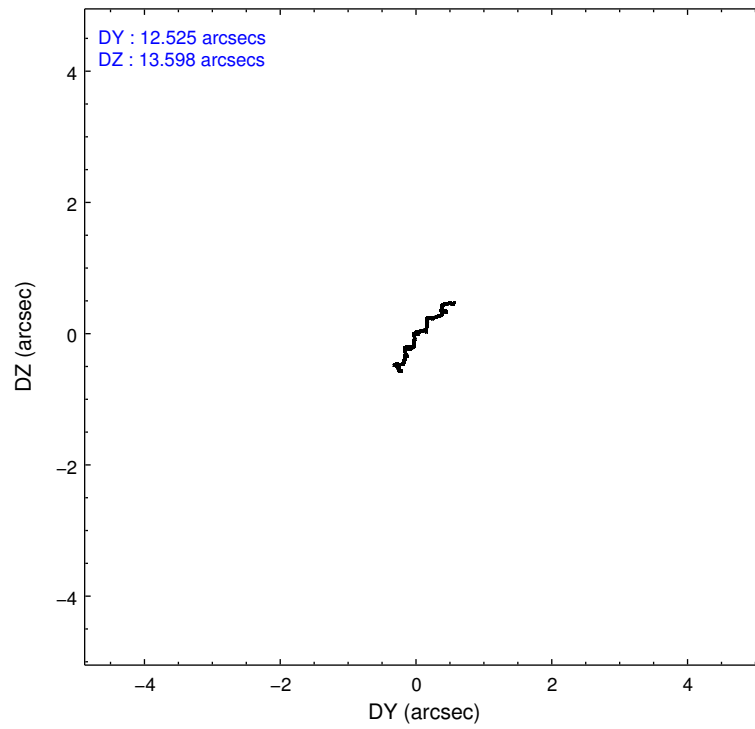
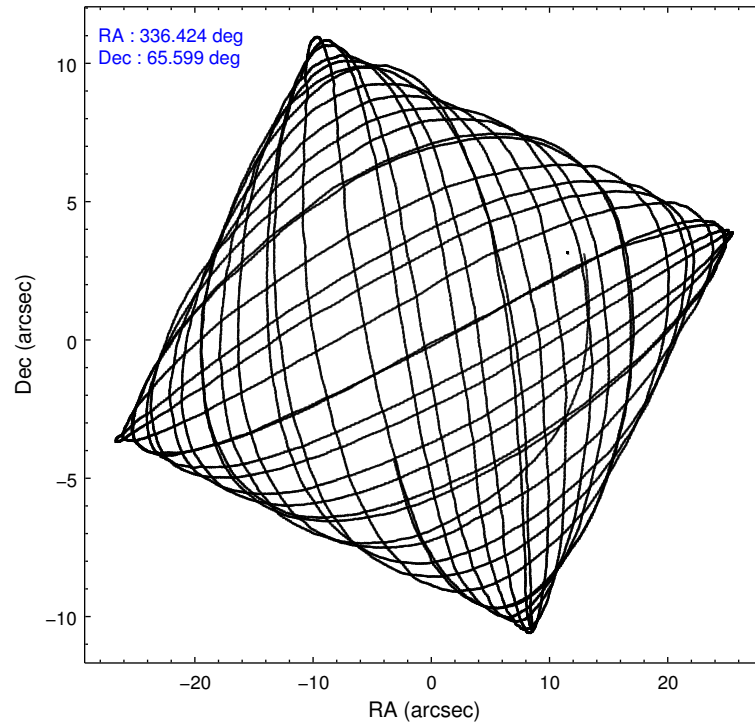
	ccd 3	ccd 5	ccd 6	ccd 7	ccd 8
level 1 events	77216	134353	79423	104514	100929
rejected events	68525	64765	69575	57895	73073
rejected %	88%	48%	87%	55%	72%

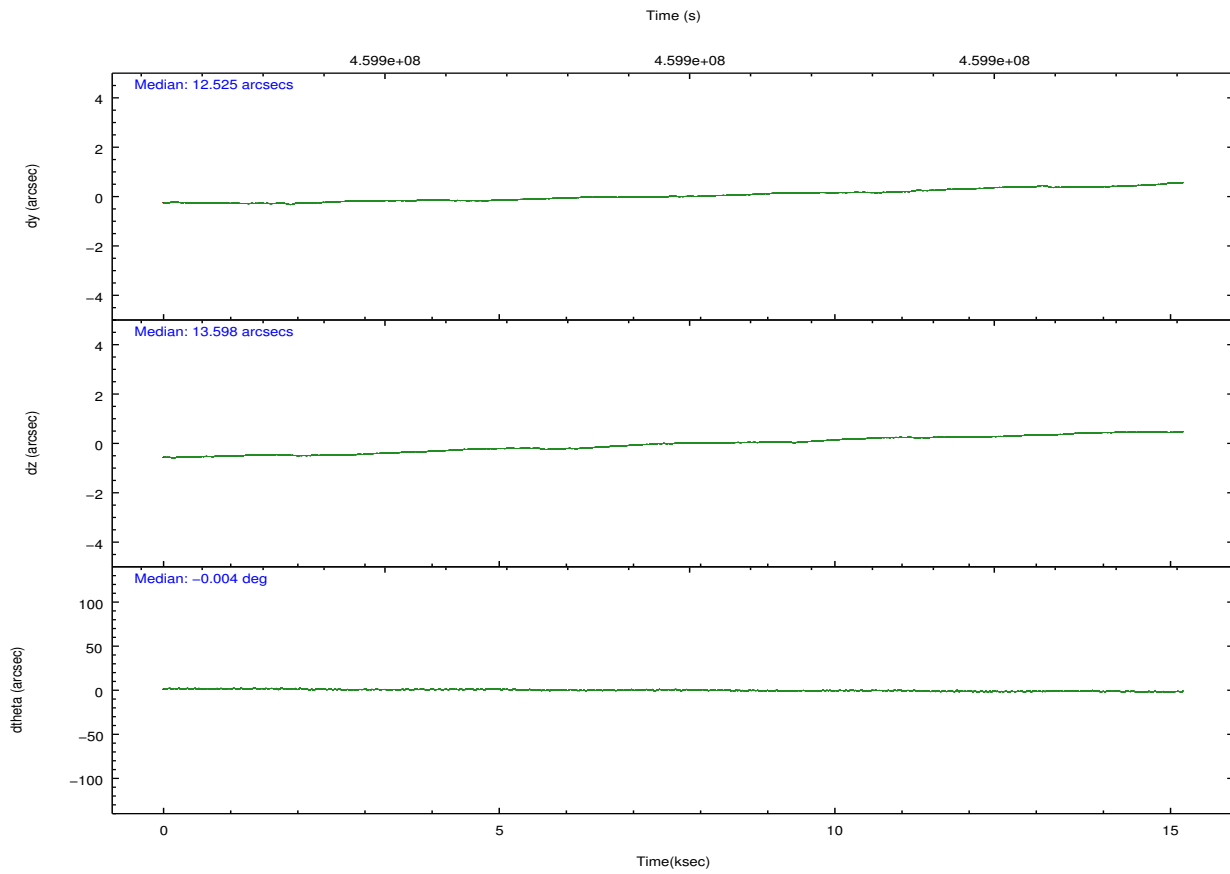
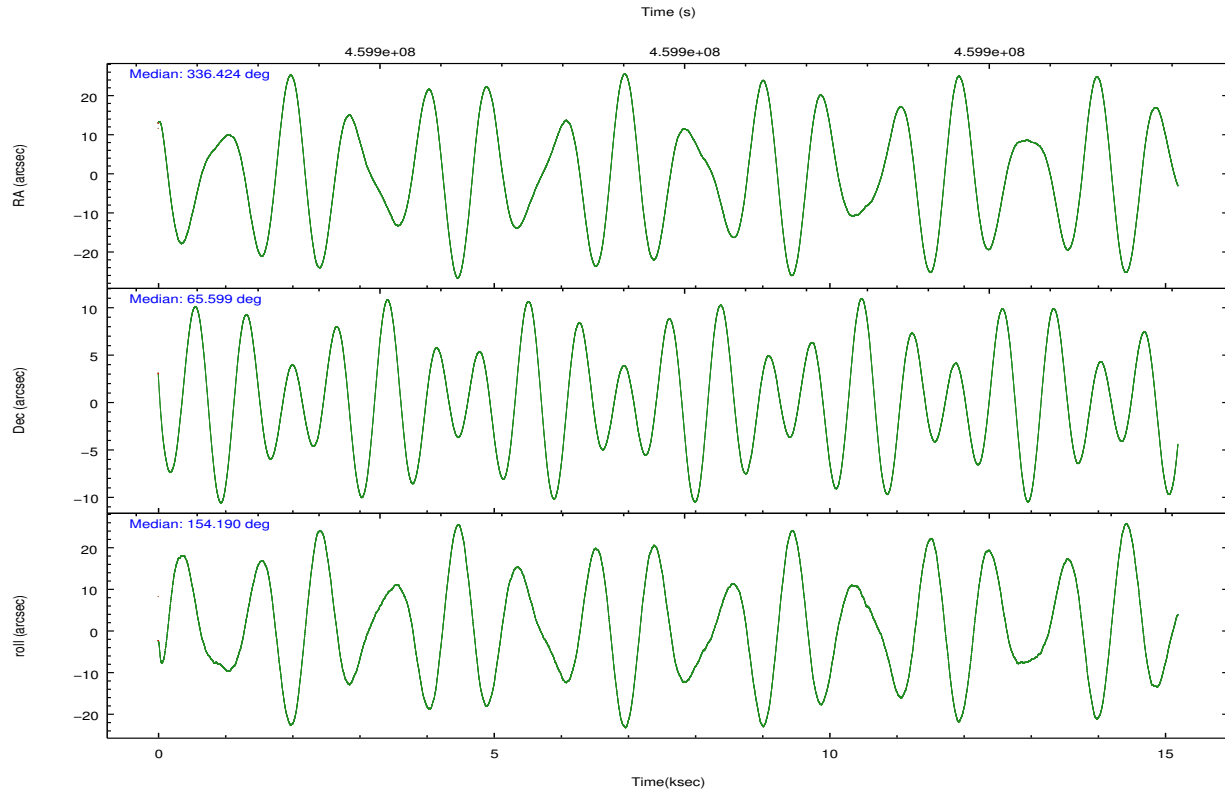
	ccd 3	ccd 5	ccd 6	ccd 7	ccd 8
grade 0 events	3076	10767	3568	4352	8290
	3%	8%	4%	4%	8%
grade 1 events	44	318	33	117	90
	0%	0%	0%	0%	0%
grade 2 events	1875	21214	2133	9643	6462
	2%	15%	2%	9%	6%
grade 3 events	936	2181	989	3852	2936
	1%	1%	1%	3%	2%
grade 4 events	949	2104	964	3821	2718
	1%	1%	1%	3%	2%
grade 5 events	3900	9269	3791	10615	5556
	5%	6%	4%	10%	5%
grade 6 events	1860	33355	2198	24968	7461
	2%	24%	2%	23%	7%
grade 7 events	64576	55145	65747	47146	67416
	83%	41%	82%	45%	66%

2.2 Compared Parameters

Parameter	Planned	Actual	Parameter	Planned	Actual
Instrument	ACIS	ACIS	Obspar format version number	7	7
Detector	ACIS-35678	ACIS-35678	Obspar file type	PREDICTED	ACTUAL
Grating	NONE	NONE	Obspar update status	NONE	UPDATED
Data mode	VFAINT	VFAINT	CCD I0 on	N	N
Observation mode	POINTING	POINTING	CCD I1 on	N	N
[deg] Pointing RA	336.489699	336.4237562345497	CCD I2 on	N	N
[deg] Pointing Dec	65.601147	65.5987640240489	CCD I3 on	O1	Y
[deg] Pointing Roll	153.978638	154.1953298945595	CCD S0 on	N	N
[mm] SIM focus pos	-0.684267	-0.6828225247311905	CCD S1 on	O2	Y
[mm] SIM defocus	0	0.001444936568705701	CCD S2 on	Y	Y
[mm] SIM translation stage pos	-190.132523	-190.1400660498719	CCD S3 on	Y	Y
[mm] SIM translation stage offset	0	0.00754346686406393	CCD S4 on	Y	Y
[s] Observation start time (MET)	459892310.184000	459890742.40455	CCD S5 on	N	N
Observation start date	2012-07-28T19:50:43	2012-07-28T19:25:42	Number of optional ACIS chips dropped	0	0
[s] Observation end time (MET)	459907313.184000	459907538.56795	On-chip summing requested	N	N
Observation end date	2012-07-29T00:00:46	2012-07-29T00:05:38	Subarray requested	NONE	NONE
Read mode	TIMED	TIMED	Alternating exposures requested	N	N
			[s] Primary exposure time	0.000000	3.1

2.3 Aspect



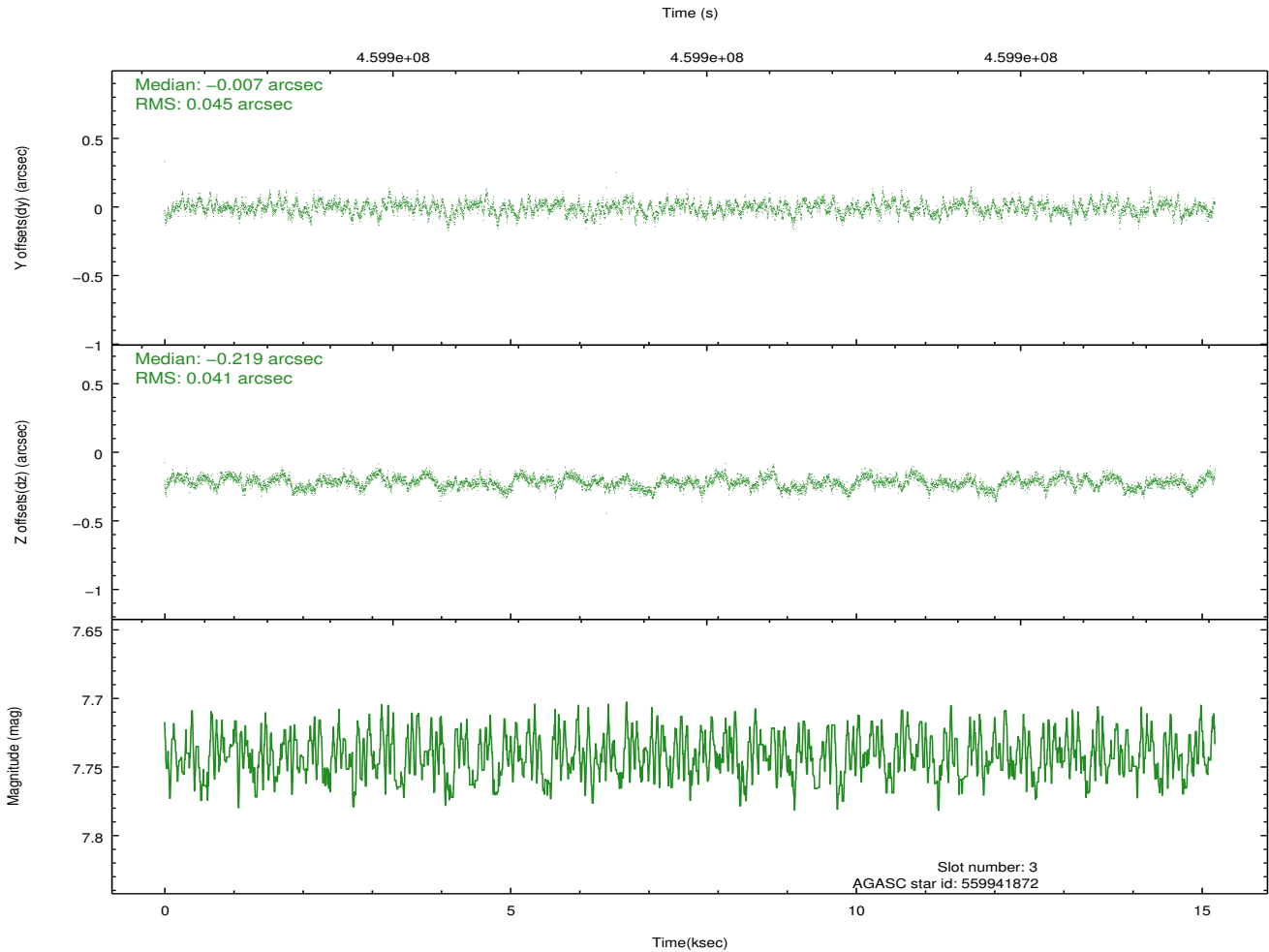
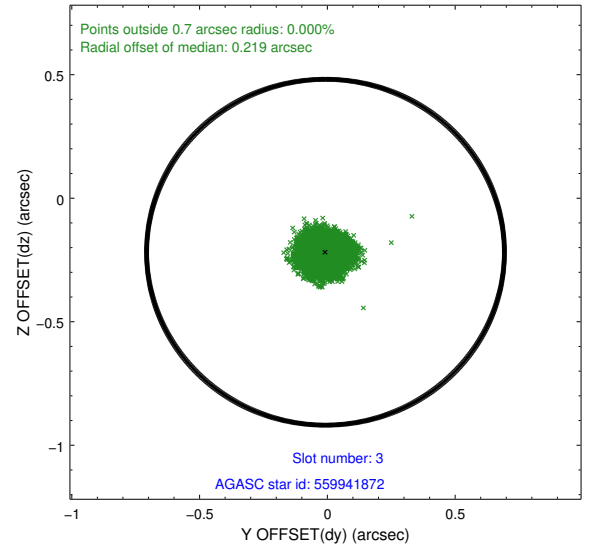
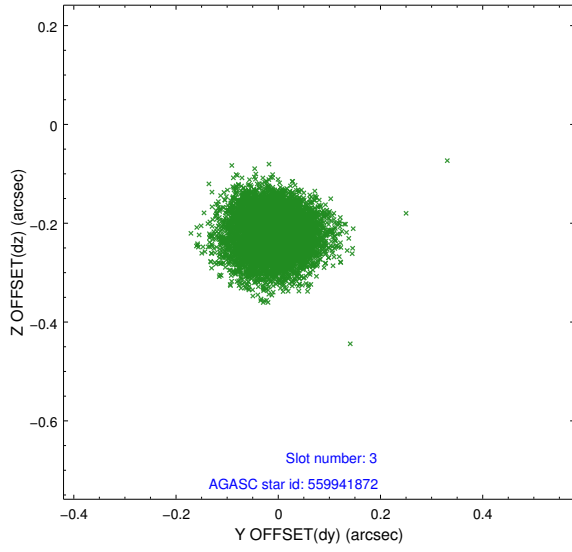


Slot Statistics

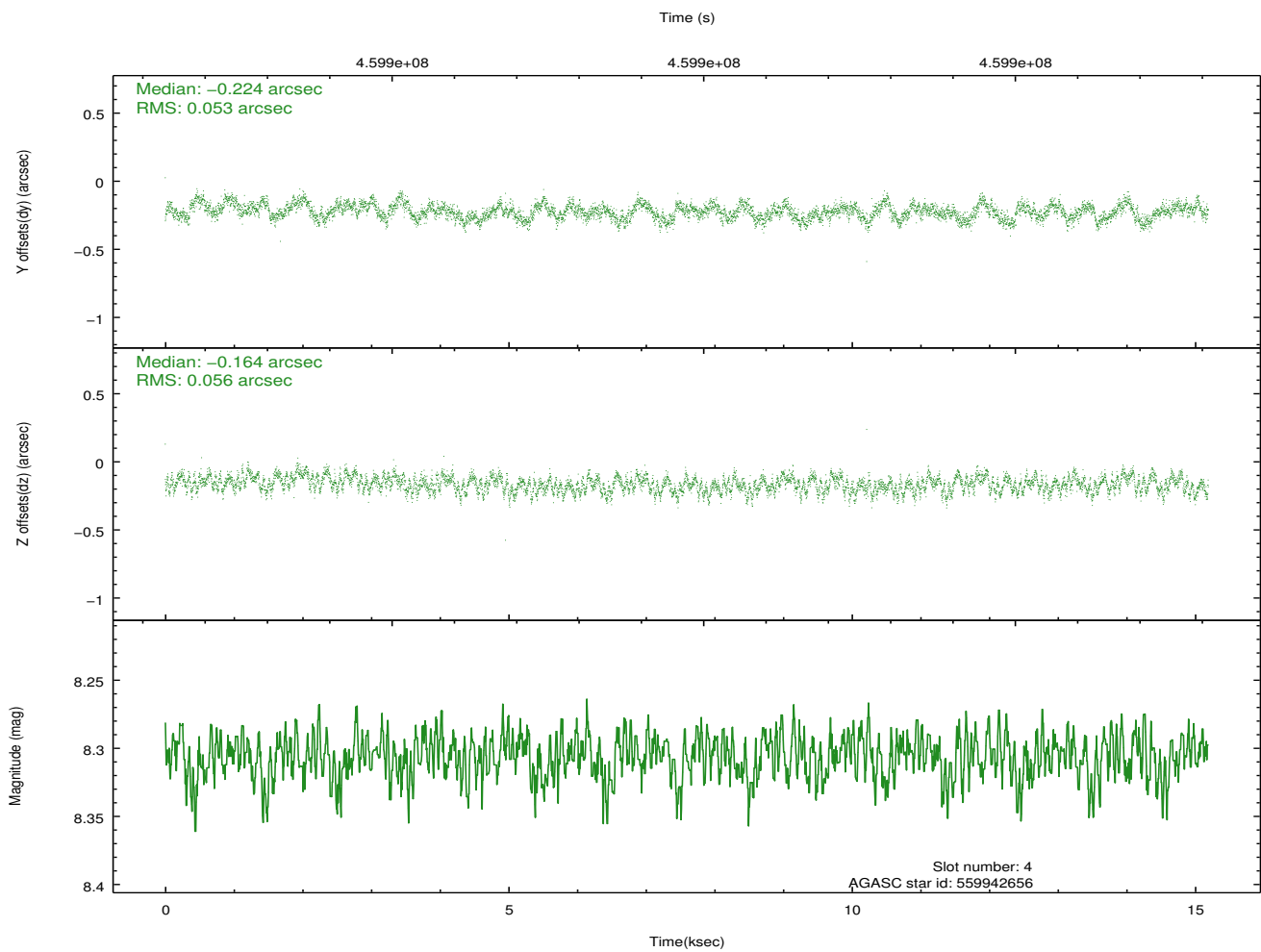
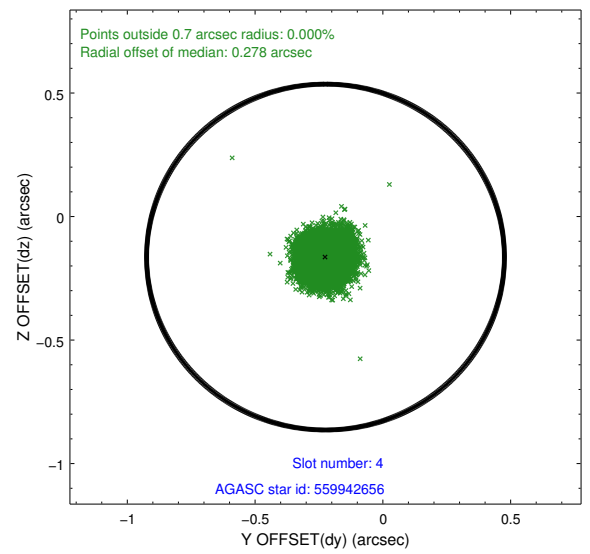
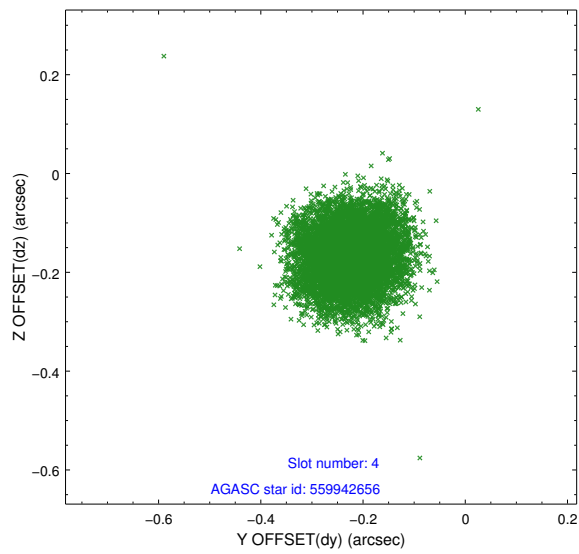
slot	status	id	mag	n_pts	med_dy	med_dz	dr1	dr2	ra	dec	mean_y	mean_z
0	FID	ACIS-S-2	7.01	3706	-0.043	-0.050	0.010	0.017	0.000000	0.000000	-765.52	-1734.94
1	FID	ACIS-S-4	7.10	3706	0.185	0.035	0.012	0.028	0.000000	0.000000	2147.85	173.32
2	FID	ACIS-S-5	7.14	3706	-0.174	0.024	0.011	0.017	0.000000	0.000000	-1818.11	167.32
3	GUIDE	559941872	7.74	7409	-0.007	-0.219	0.066	0.104	336.770906	65.466155	-590.52	251.40
4	GUIDE	559942656	8.31	7411	-0.224	-0.164	0.084	0.128	335.233249	65.304591	1237.95	1771.98
5	GUIDE	559944168	8.11	7410	0.033	-0.072	0.077	0.133	337.323055	65.113328	-1900.82	1016.98
6	GUIDE	560464080	7.12	7410	0.075	0.225	0.064	0.100	338.477679	65.831661	-2248.55	-2072.93
7	GUIDE	560470752	8.23	7407	0.124	0.230	0.075	0.120	338.199817	65.999376	-1605.98	-2417.57

2.4 Star Slots

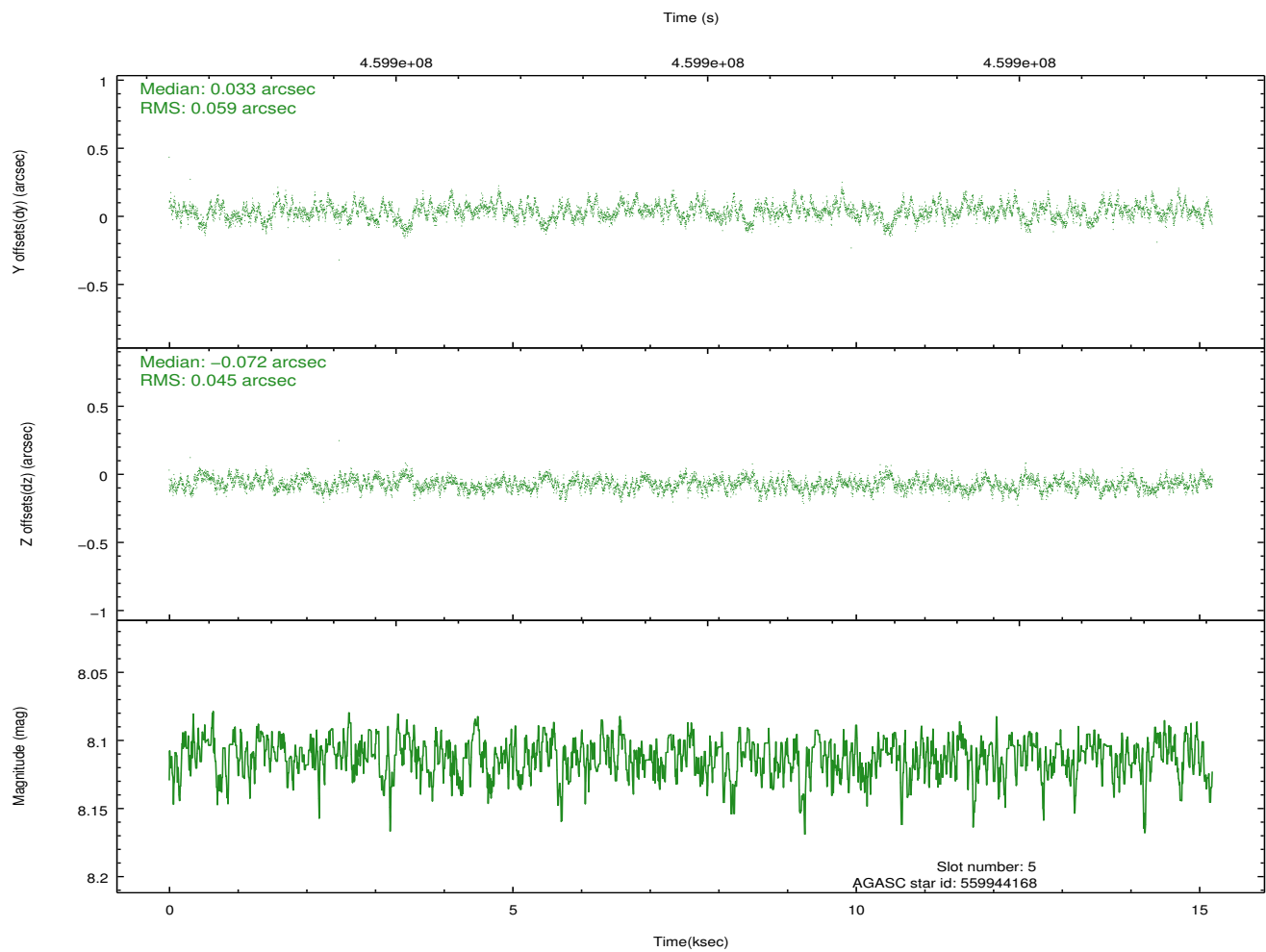
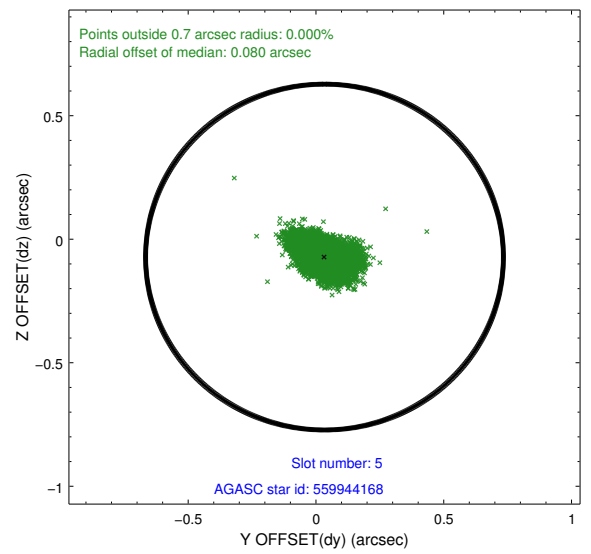
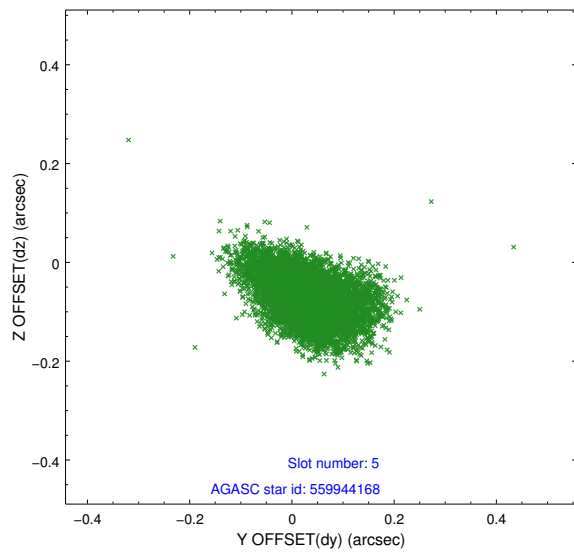
2.4.1 Slot 3



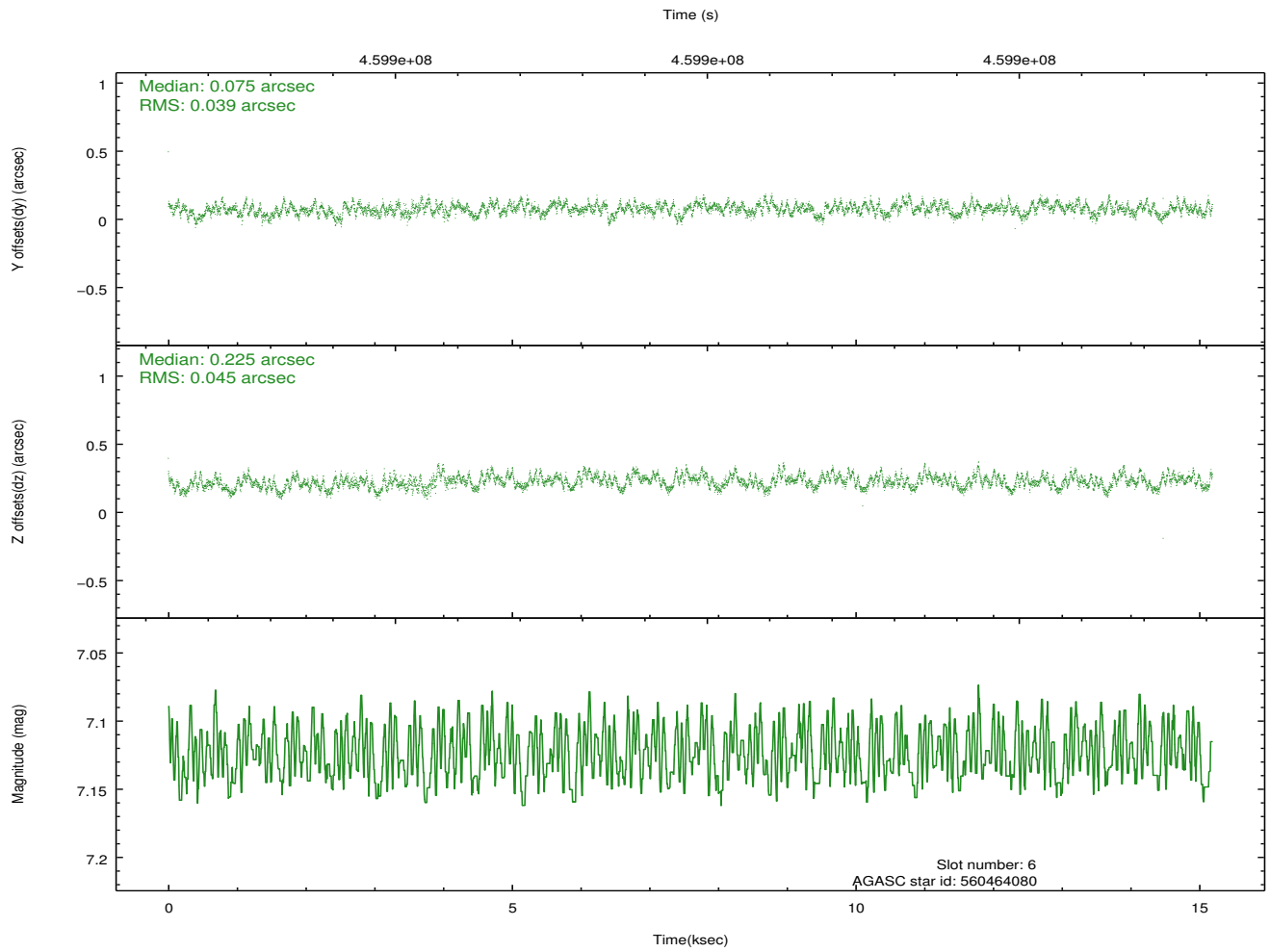
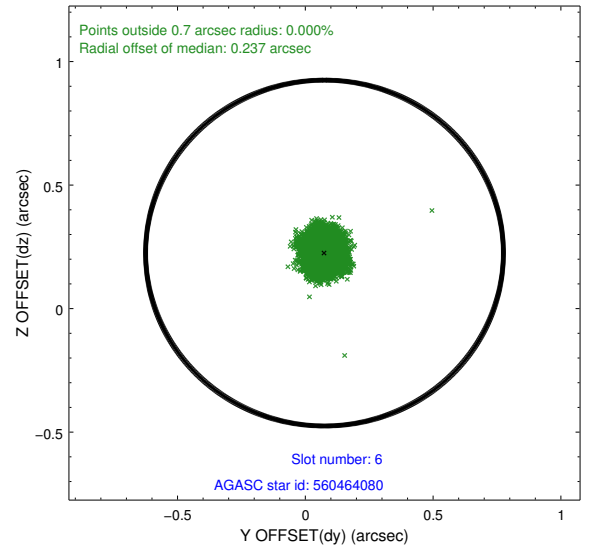
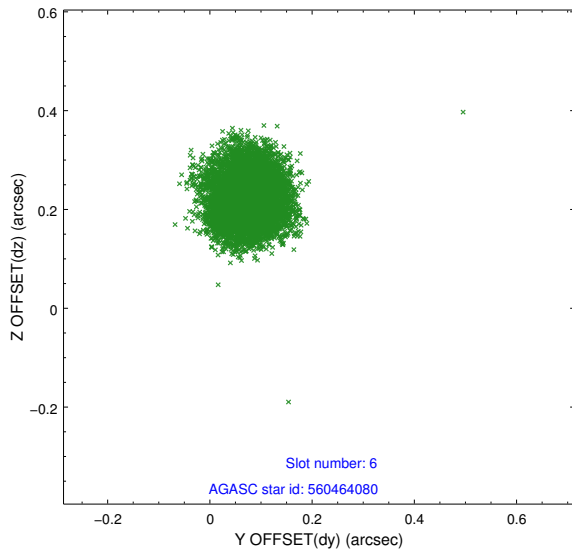
2.4.2 Slot 4



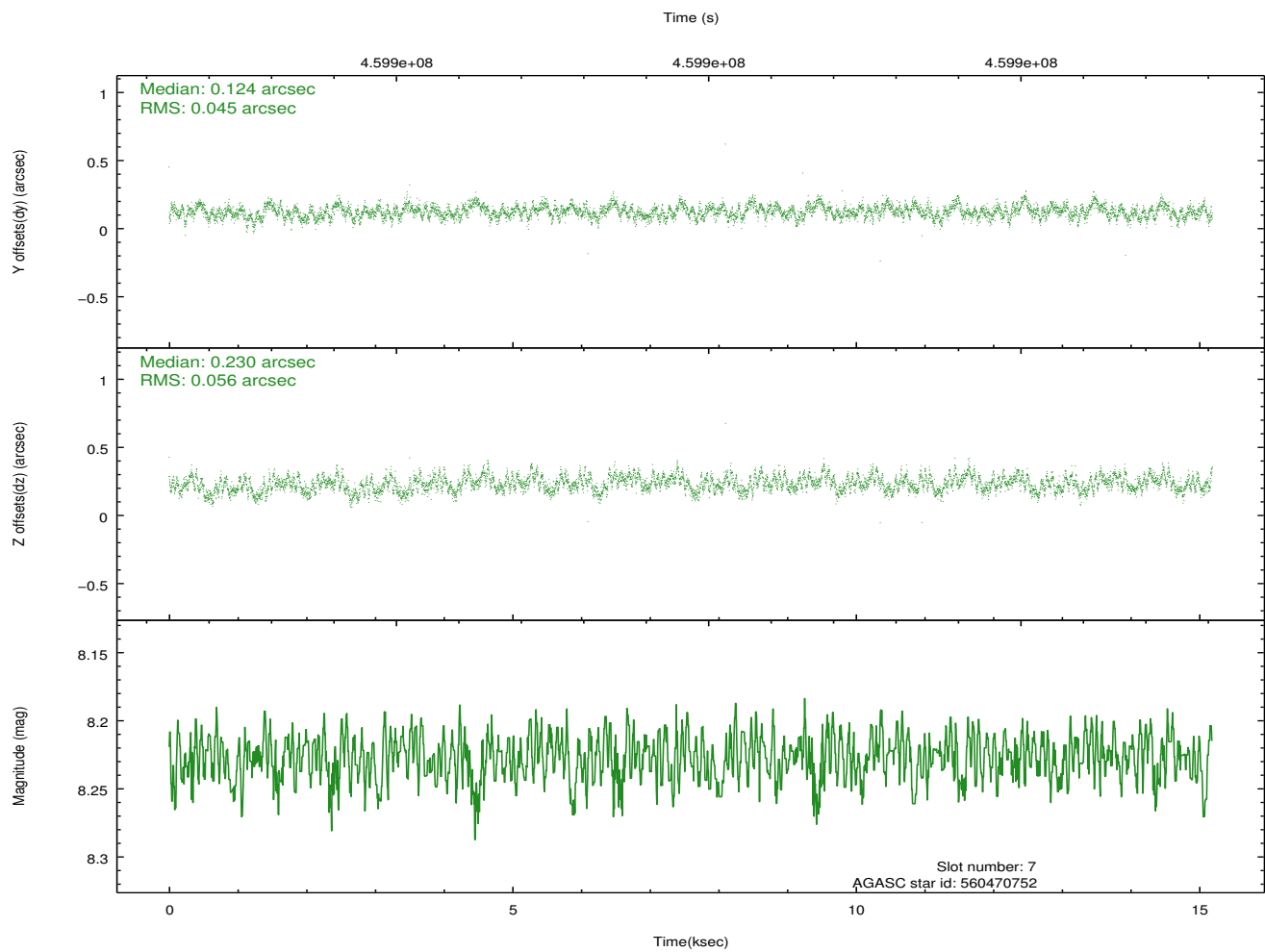
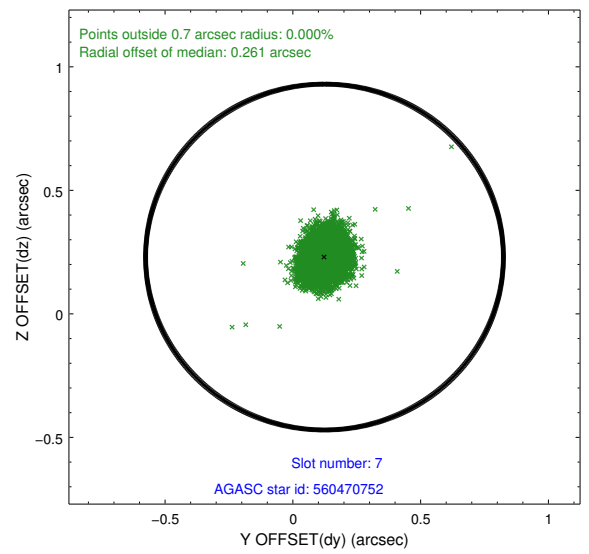
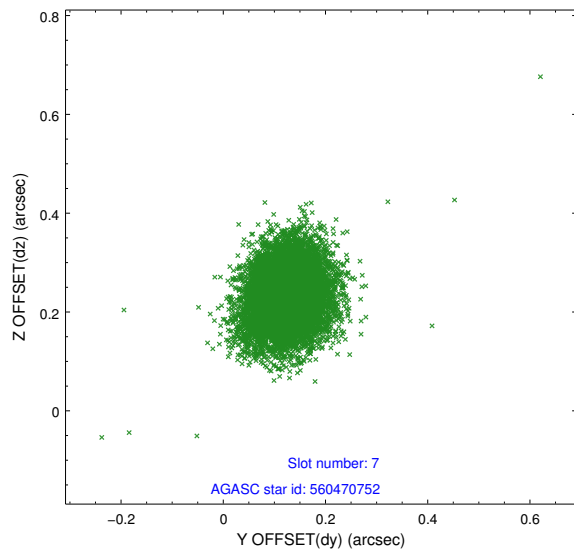
2.4.3 Slot 5



2.4.4 Slot 6

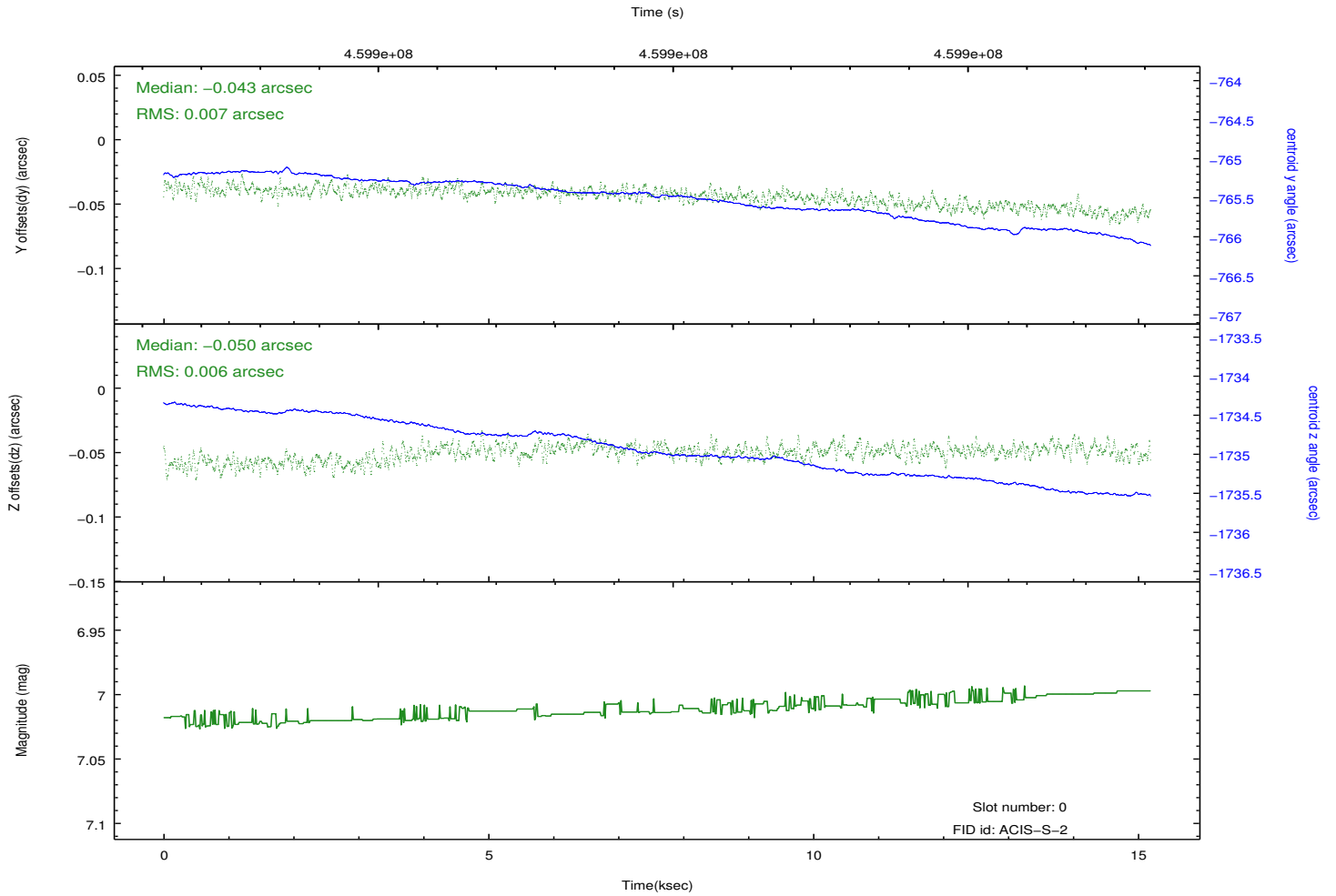
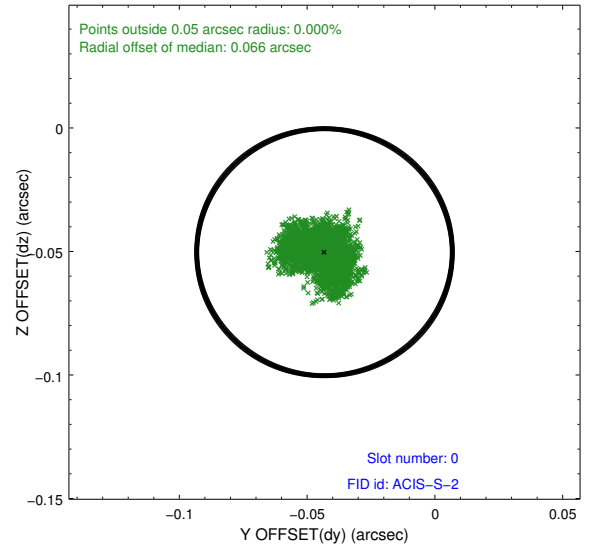
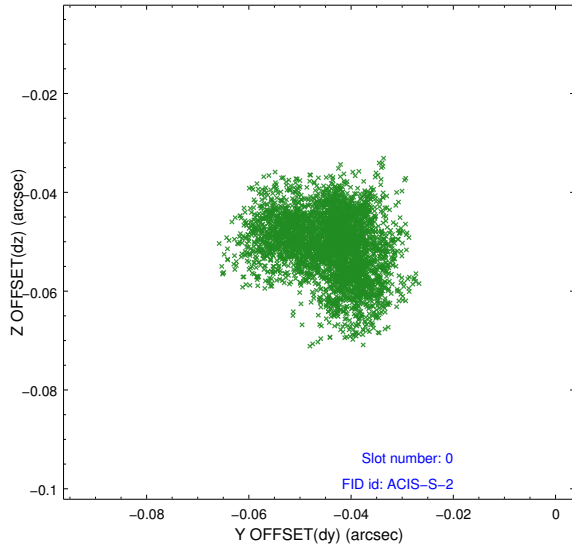


2.4.5 Slot 7

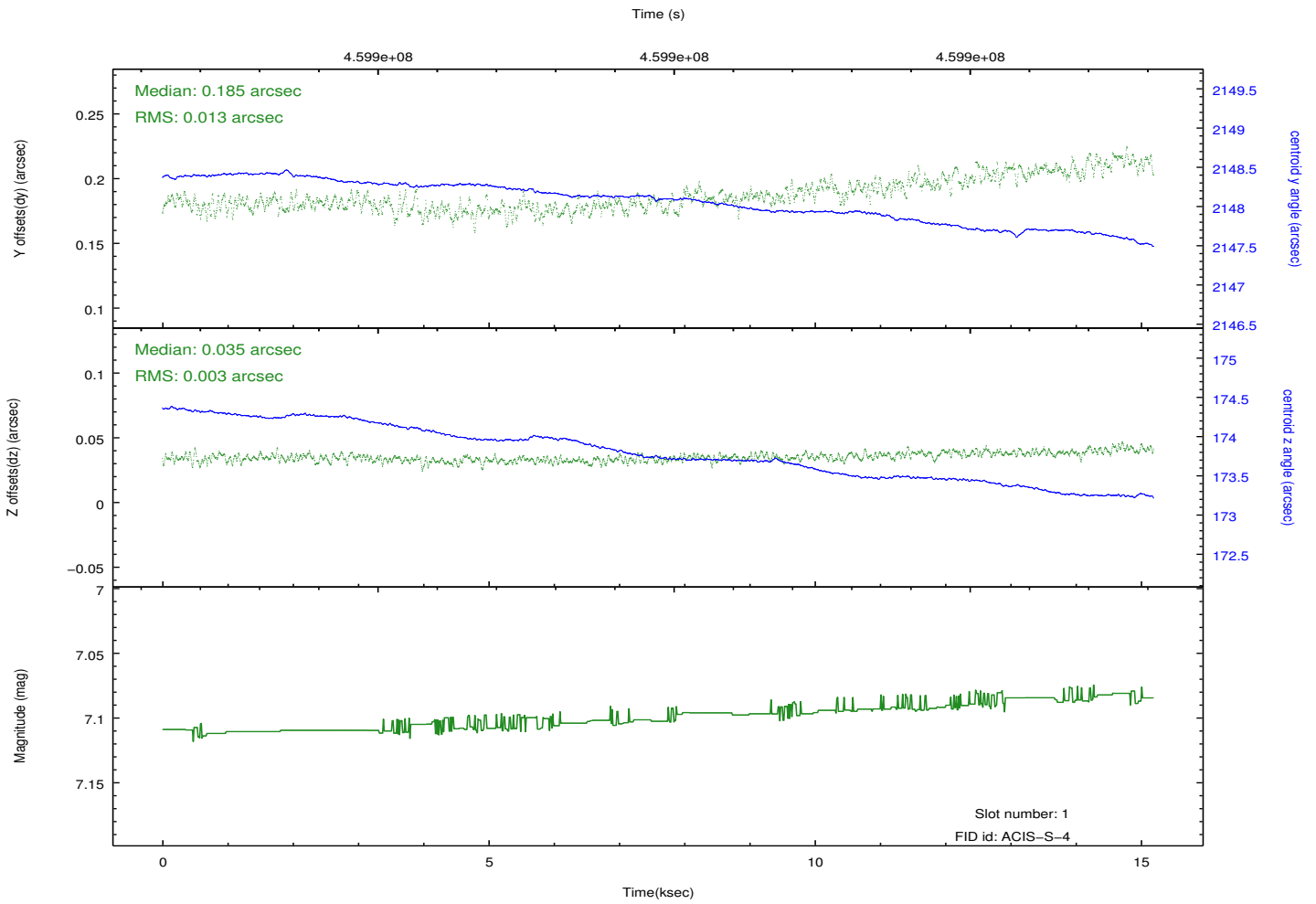
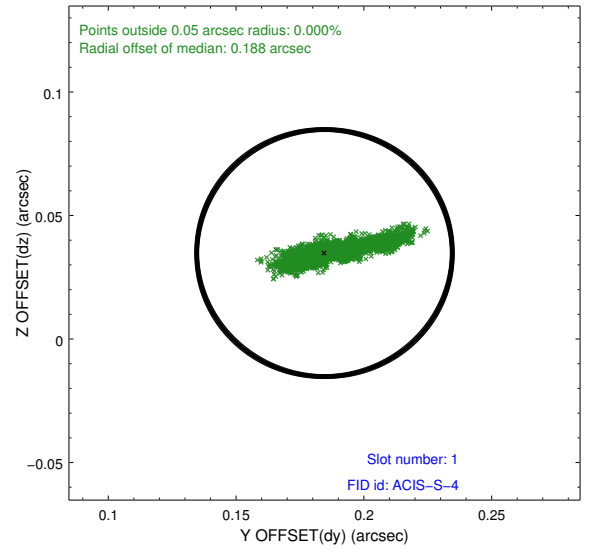
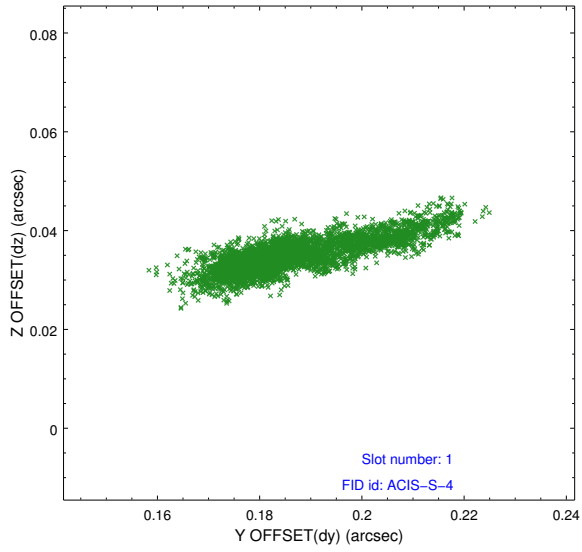


2.5 FID Slots

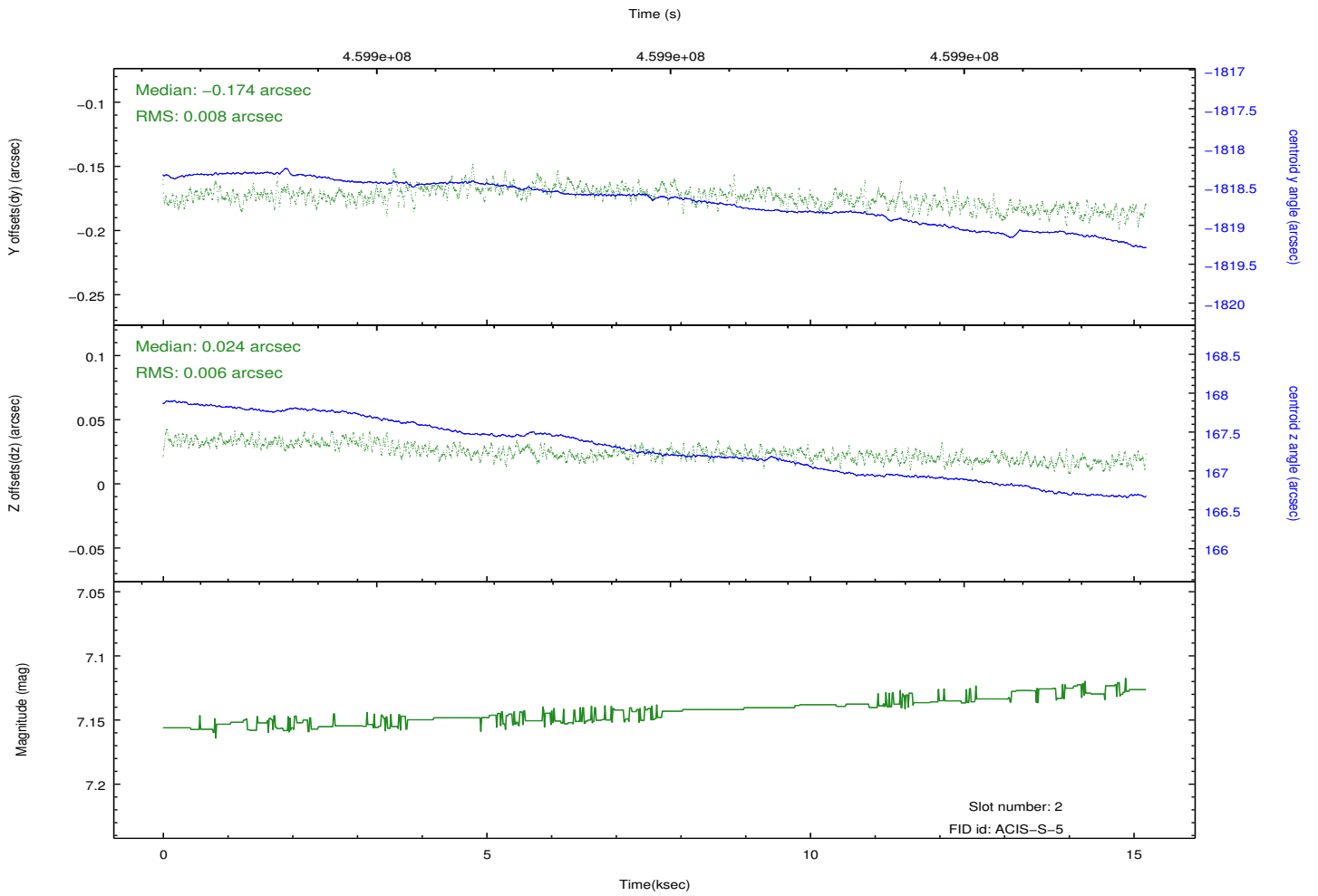
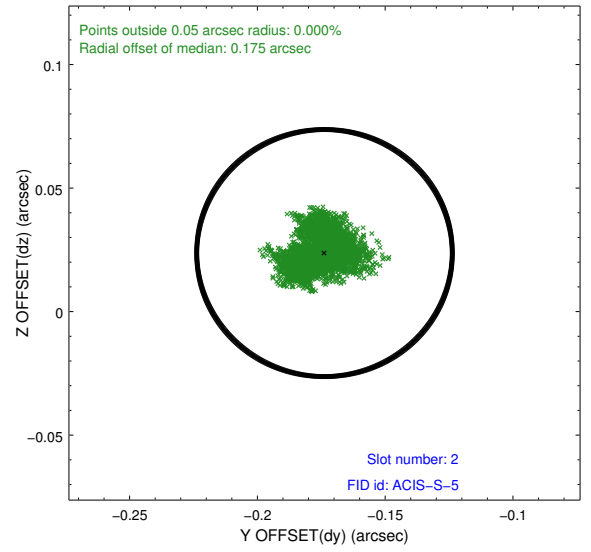
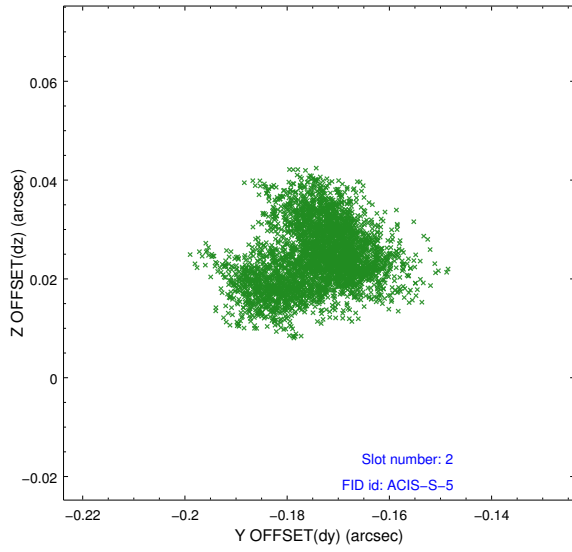
2.5.1 Slot 0



2.5.2 Slot 1



2.5.3 Slot 2



A Summary

A.1 Status

V&V Scientist	Joy Nichols
V&V Date (YYYY-MM-DD)	2012.07.30
V&V Edition	1
V&V Disposition and Status	OK
V&V Charge Time	15.067816412687

A.2 Comments