

V&V Reference Report

L2 ASCDS Version : 8.4.5

Observation 1557 - L2 Version 5
Chandra X-Ray Center

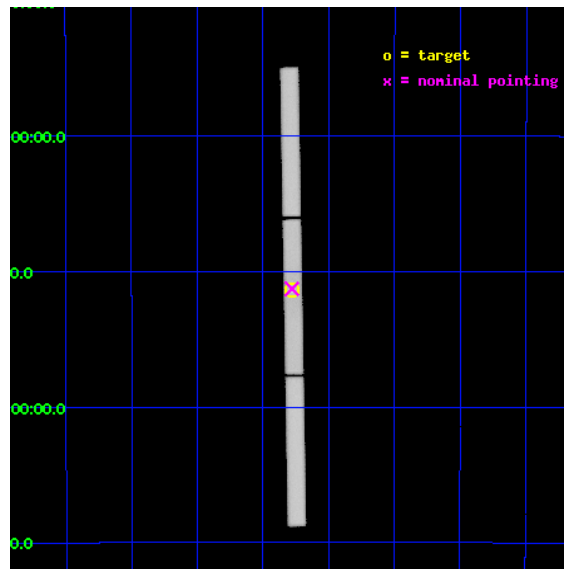
L2 Processing Date : Sep 11 2012

Contents

1	Front	2
2	OBI	3
2.1	OBI	3
2.1.1	Images	3
2.1.2	Parameters	4
2.1.3	Events	4
2.2	Compared Parameters	5
2.3	Aspect	6
2.4	Star Slots	9
2.4.1	Slot 3	9
2.4.2	Slot 4	10
2.4.3	Slot 5	11
2.4.4	Slot 6	12
2.4.5	Slot 7	13
2.5	FID Slots	14
2.5.1	Slot 0	14
2.5.2	Slot 1	15
2.5.3	Slot 2	16
A	Summary	17
A.1	Status	17
A.2	Comments	17

1 Front

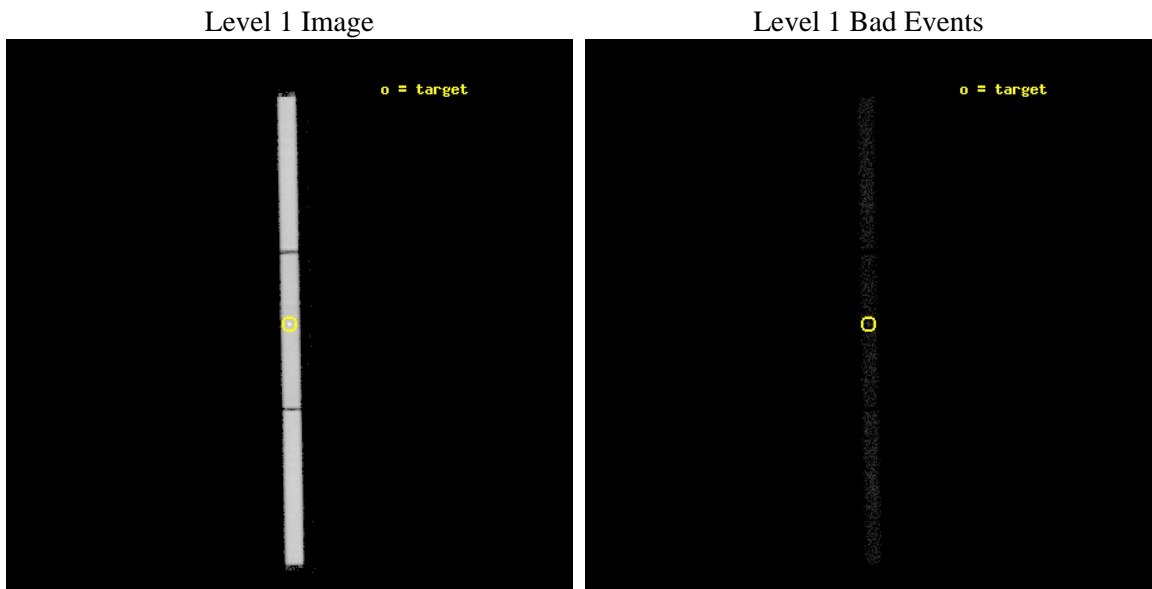
seq_num	590166	Sequence number
obs_id	1557	Observation id
title	CALIBRATION OBSERVATIONS OF THE STANDARD CANDLE G21.5-09	Proposal
observer	Dr. CXC Calibration	Principal investigator
object	G21.5-0.9 [HRC-S, Offsets=0,0,0 Offsets=AO2A]	Source name
ra_targ	278.389583	Observer's specified target RA [deg]
dec_targ	-10.568528	Observer's specified target Dec [deg]
ra_nom	278.38986563065	Nominal RA [deg]
dec_nom	-10.563881032399	Nominal Dec [deg]
roll_nom	88.952322029288	Nominal Roll [deg]
revision	5	Processing version of data
ontime	8853.1815921366	[s]
livetime	8537.4986027111	Ontime multiplied by DTCOR
l2events	617690	Number of level 2 events



2 OBI

2.1 OBI

2.1.1 Images



2.1.2 Parameters

obi_num	0	Obi number	sched_exp_time	9000.000000	[s] Scheduled observation exposure time
ascdsver	8.4.5	Processing system revision	ontime	8853.1815921366	[s]
caldsver	4.5.1.1	 	l1events	799130	Number of level 1 events
date	2012-09-12T00:16:33	Date and time of file creation			
revision	4	Processing version of data			

2.1.3 Events

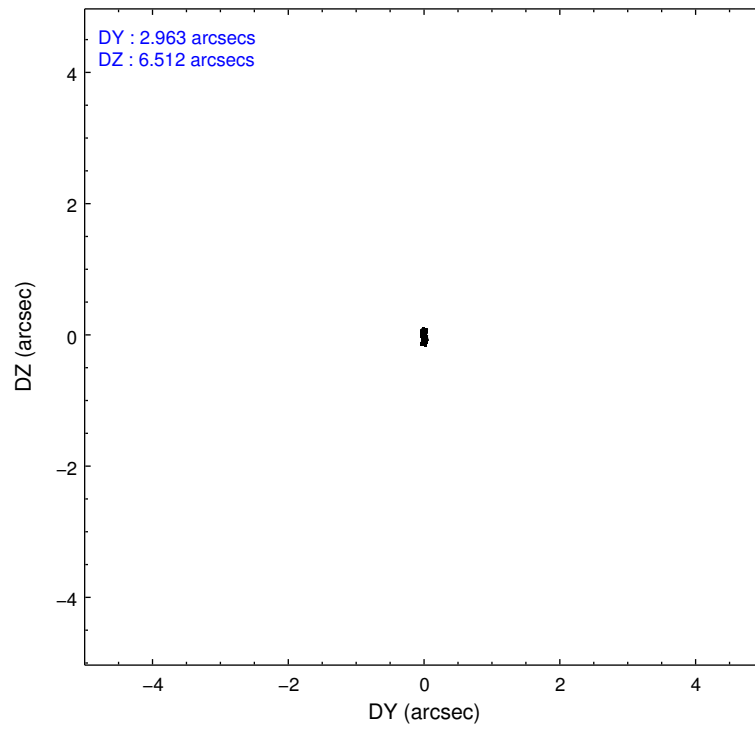
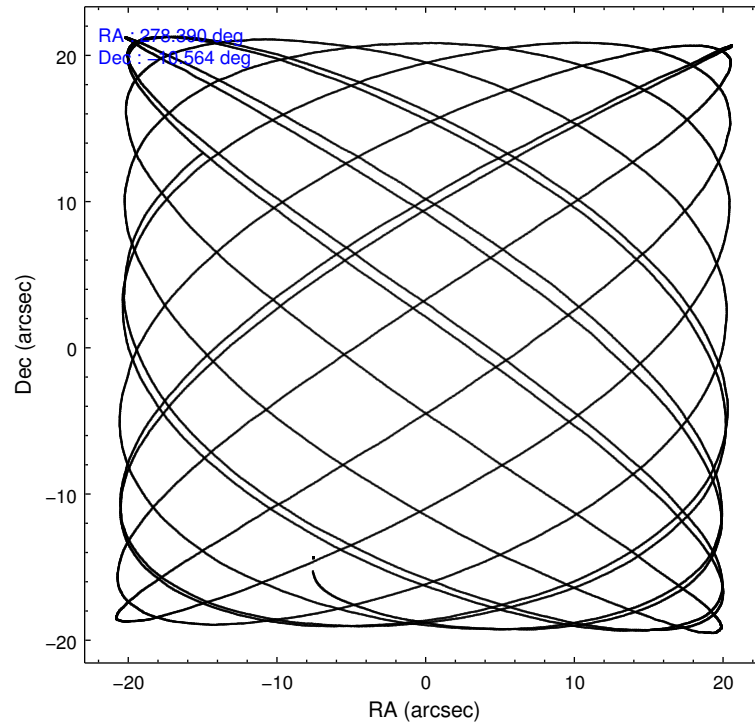
Level 1 Events

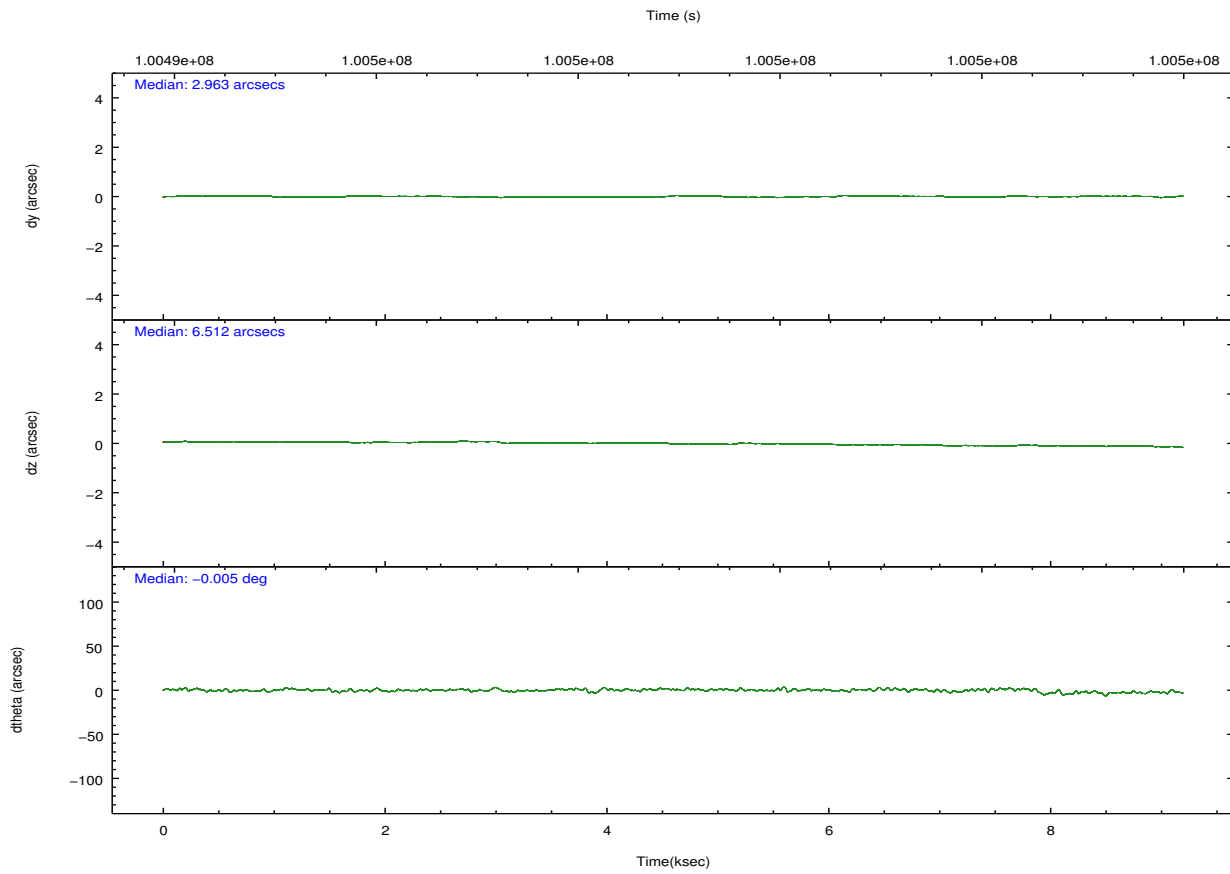
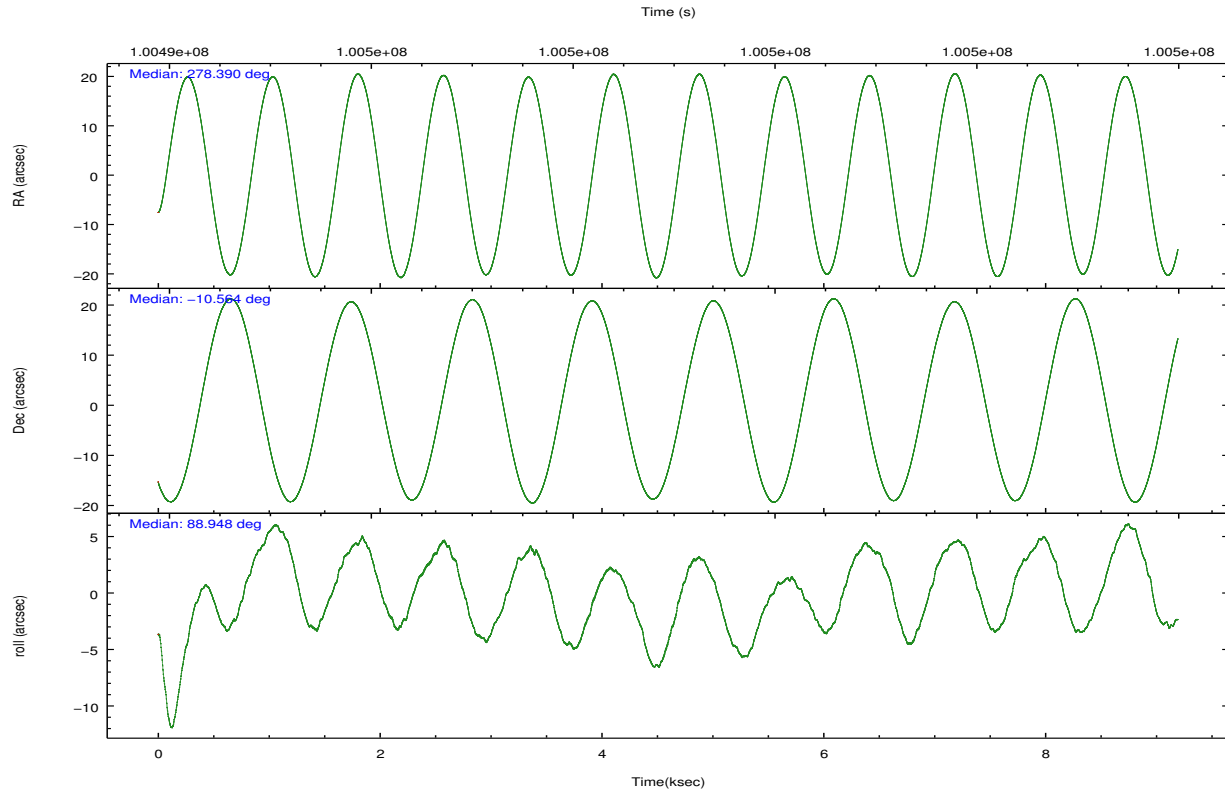
	segment 1	segment 2	segment 3
level 1 events	286236	243118	269776
rejected events	2777	4122	2664
rejected %	0%	1%	0%

2.2 Compared Parameters

Parameter	Planned	Actual	Parameter	Planned	Actual
Instrument	HRC	HRC	Obspar format version number	7	7
Detector	HRC-S	HRC-S	Obspar file type	PREDICTED	ACTUAL
Grating	NONE	NONE	Obspar update status	NONE	UPDATED
Data mode	OBSERVING	OBSERVING			
Observation mode	POINTING	POINTING			
[deg] Pointing RA	278.405134	278.3898656306545			
[deg] Pointing Dec	-10.588159	-10.56388103239943			
[deg] Pointing Roll	88.887790	88.95232202928814			
[s] Window start time (MET)	98582464.184000	98582464.184000			
[s] Window stop time (MET)	101001664.184000	101001664.184000			
[mm] SIM focus pos	-1.429586	-1.428180813131781			
[mm] SIM defocus	0.1037507710433287	0.1051558262725154			
[mm] SIM translation stage pos	250.455976	250.466033080201			
[mm] SIM translation stage offset	0	-0.01005468664627074			
[s] Observation start time (MET)	100494538.184000	100494164.59954			
Observation start date	2001-03-09T03:07:54	2001-03-09T03:02:44			
[s] Observation end time (MET)	100503538.184000	100504459.69994			
Observation end date	2001-03-09T05:37:54	2001-03-09T05:54:19			

2.3 Aspect



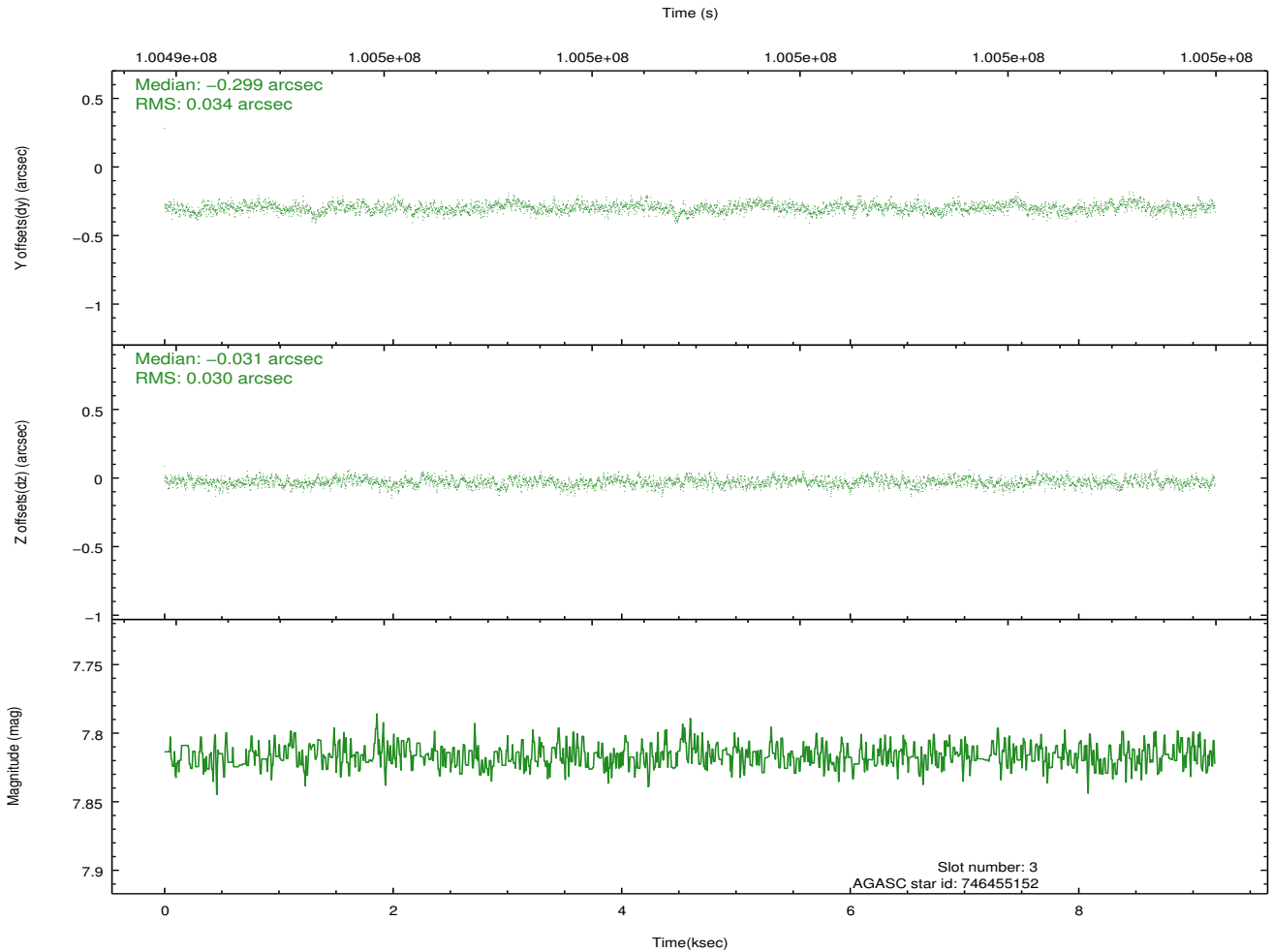
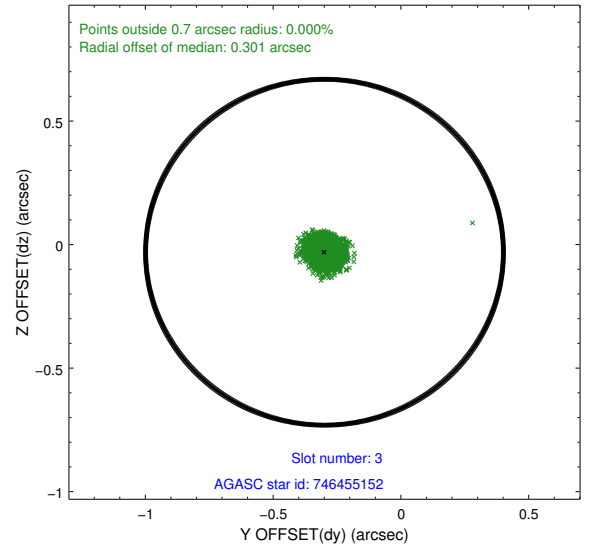
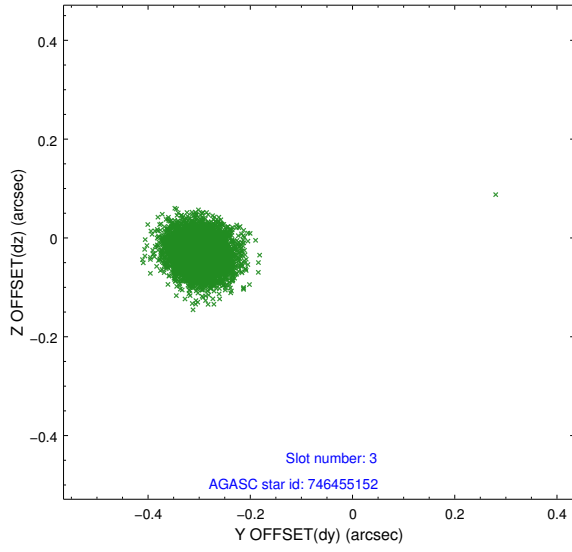


Slot Statistics

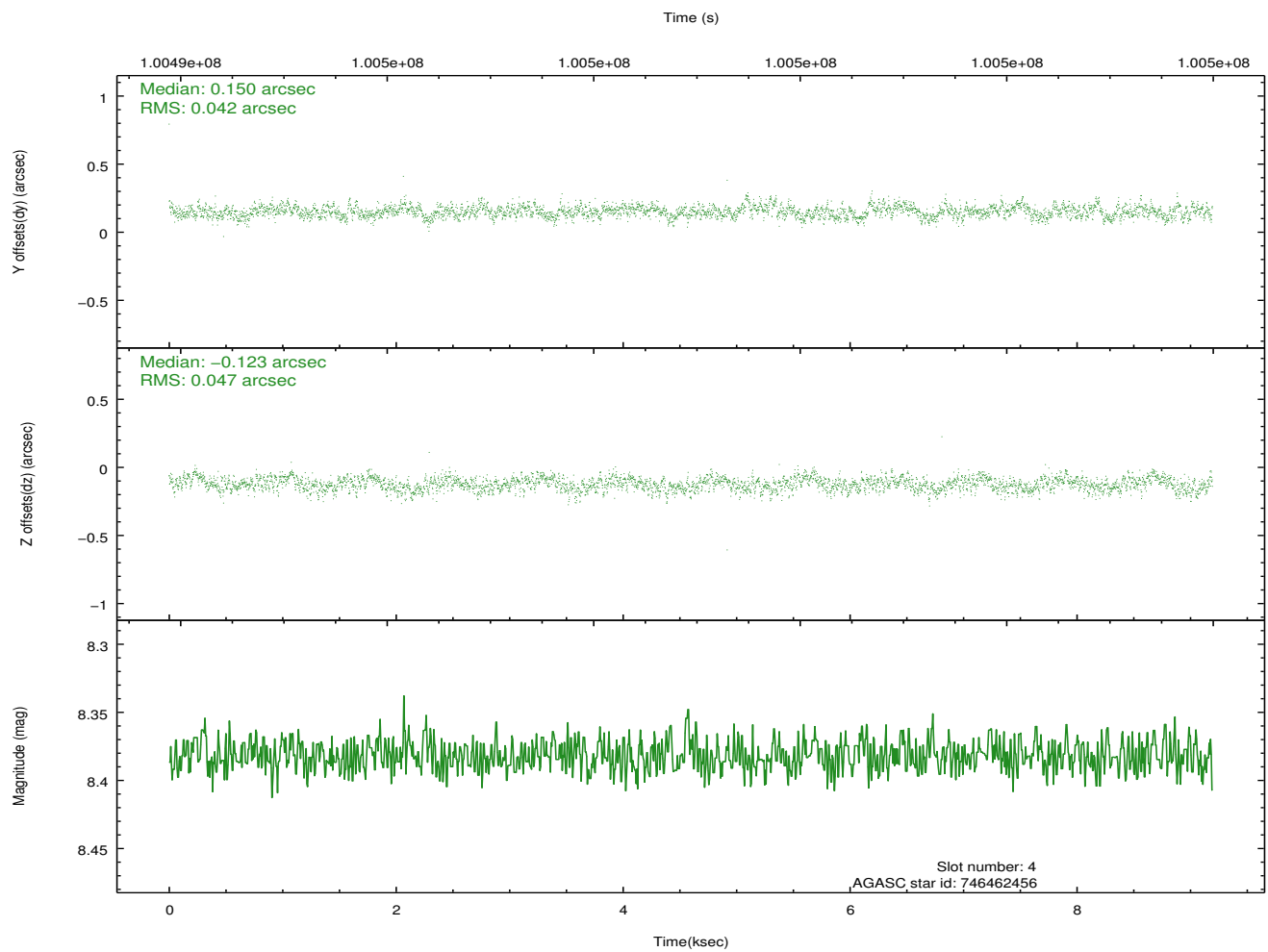
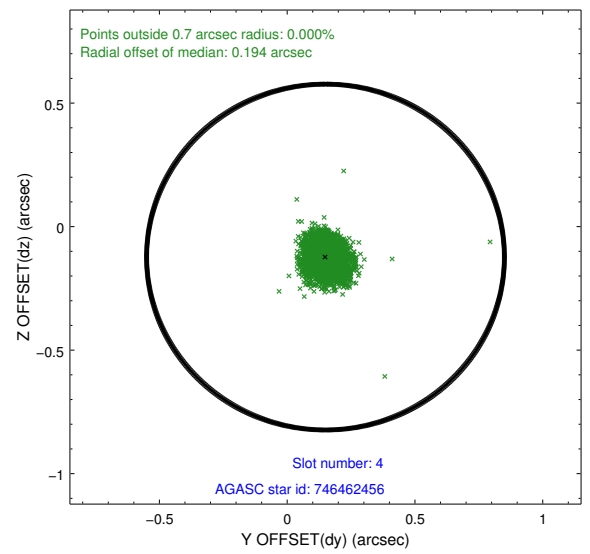
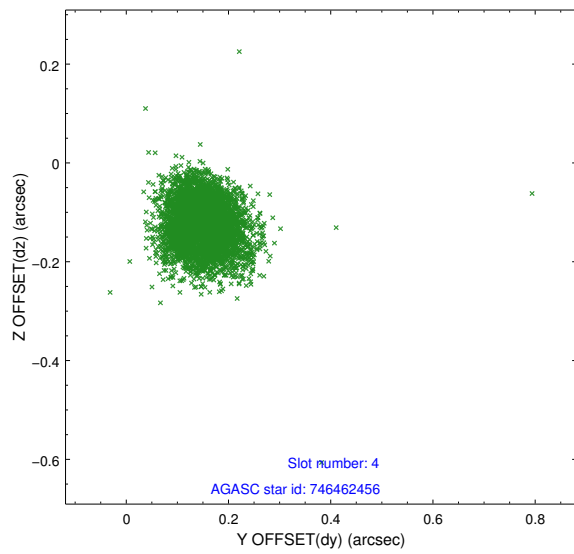
slot	status	id	mag	n_pts	med_dy	med_dz	dr1	dr2	ra	dec	mean_y	mean_z
0	FID	HRC-S-1	7.00	2242	0.104	-0.116	0.009	0.016	0.000000	0.000000	-1157.02	-455.06
1	FID	HRC-S-3	7.02	2242	0.147	-0.092	0.010	0.016	0.000000	0.000000	-1160.24	574.29
2	FID	HRC-S-4	6.95	2243	0.137	-0.089	0.006	0.012	0.000000	0.000000	1240.73	577.39
3	GUIDE	746455152	7.82	4486	-0.299	-0.031	0.048	0.077	278.447893	-9.976732	2203.60	-108.89
4	GUIDE	746462456	8.38	4486	0.150	-0.123	0.064	0.106	278.652171	-10.530173	226.11	-870.47
5	GUIDE	746462392	8.54	4486	0.132	0.120	0.081	0.132	279.038421	-10.890715	-1047.53	-2260.03
6	GUIDE	746455112	8.94	4486	0.135	-0.002	0.074	0.123	278.266531	-10.703234	-423.69	481.39
7	GUIDE	746460272	8.94	4479	-0.119	0.040	0.072	0.116	278.847488	-10.152127	1598.90	-1536.73

2.4 Star Slots

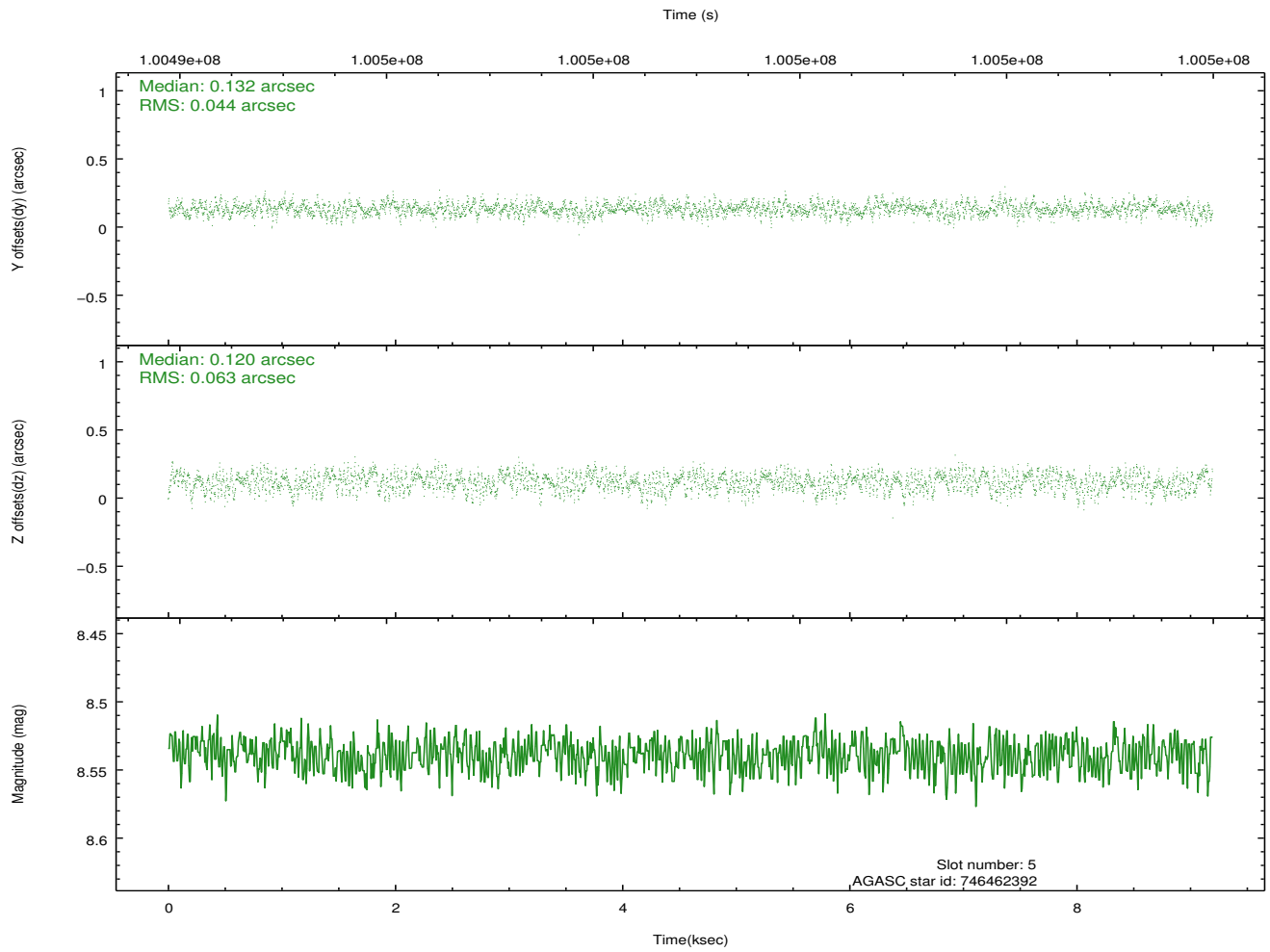
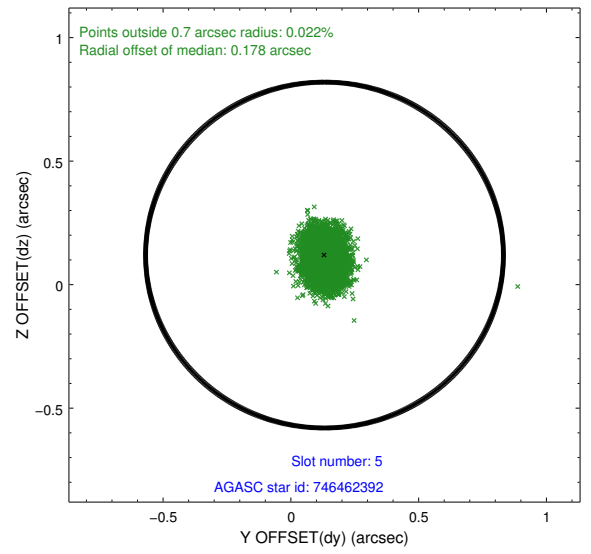
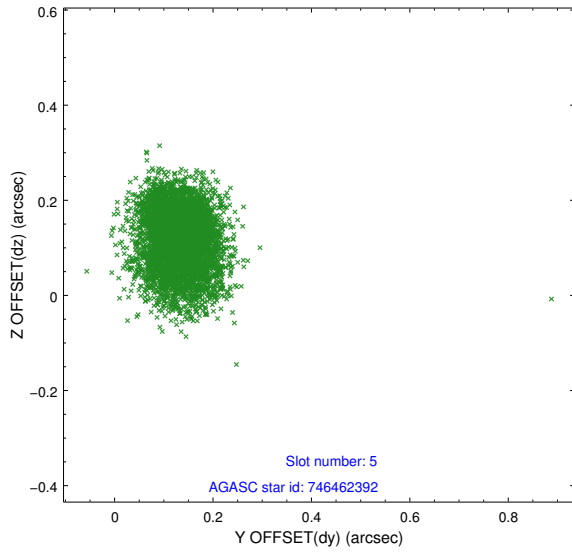
2.4.1 Slot 3



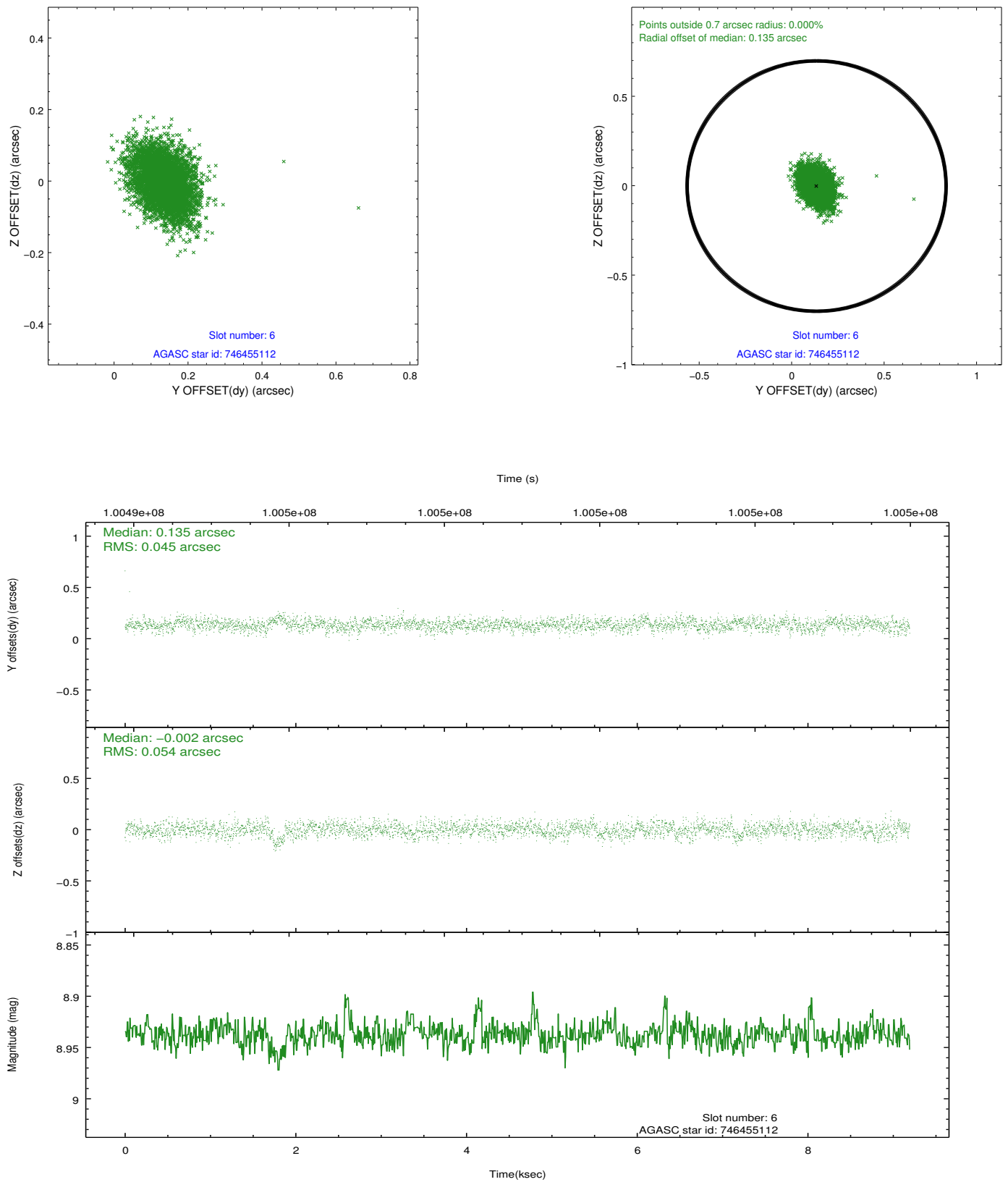
2.4.2 Slot 4



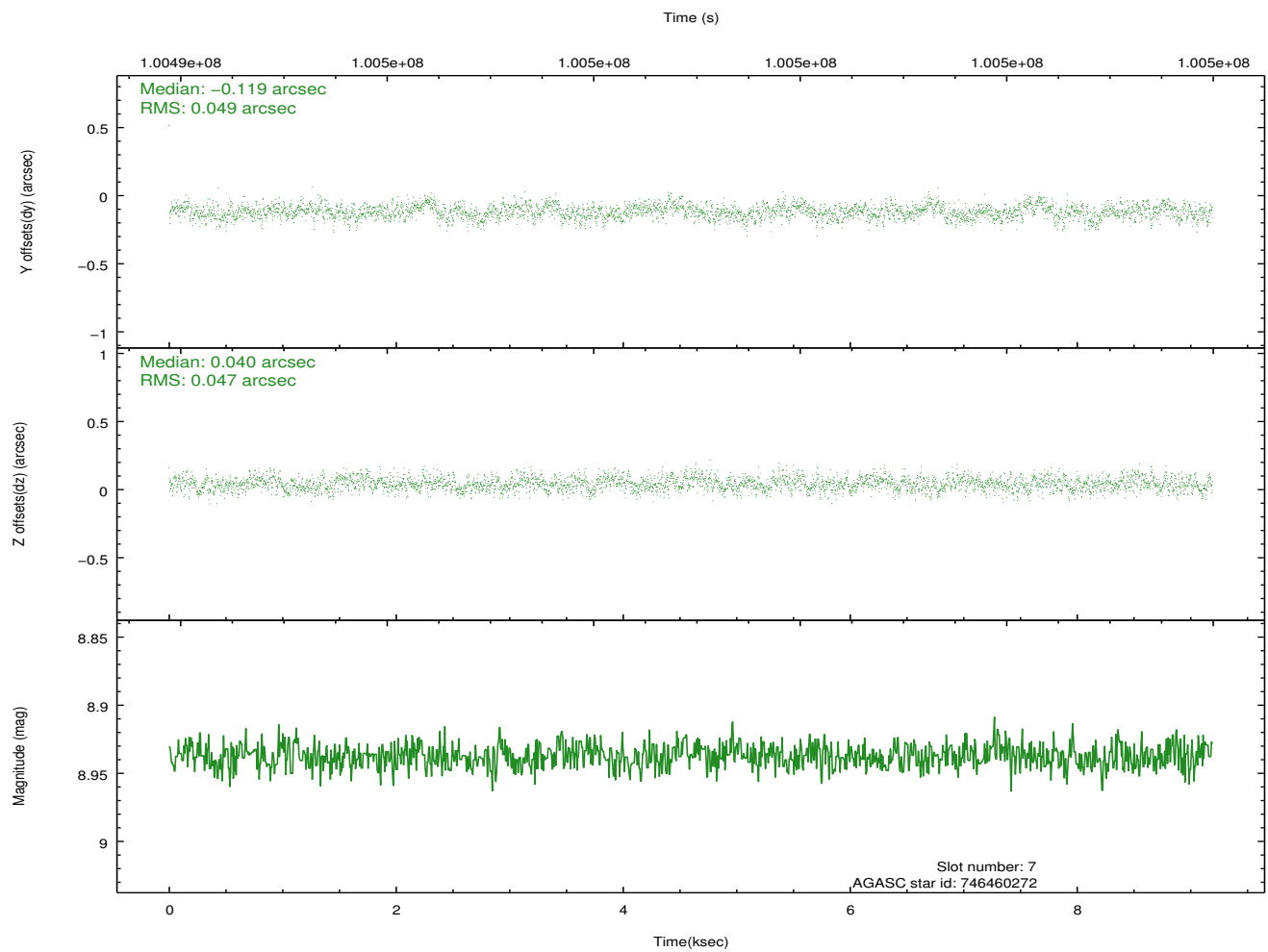
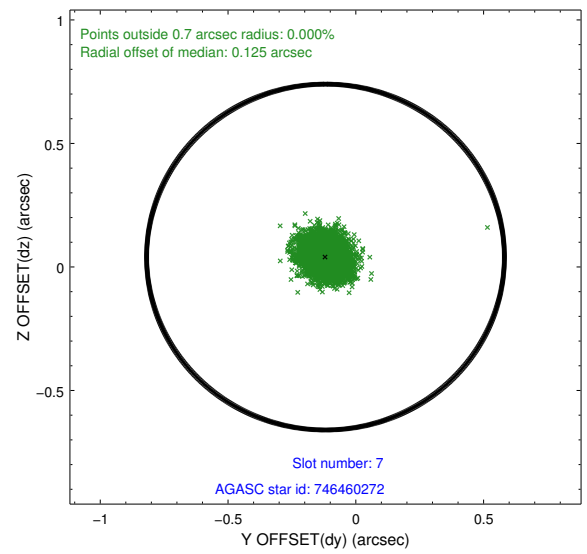
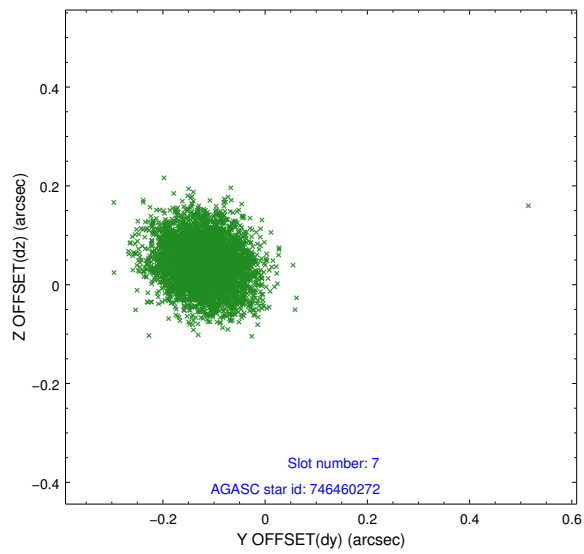
2.4.3 Slot 5



2.4.4 Slot 6

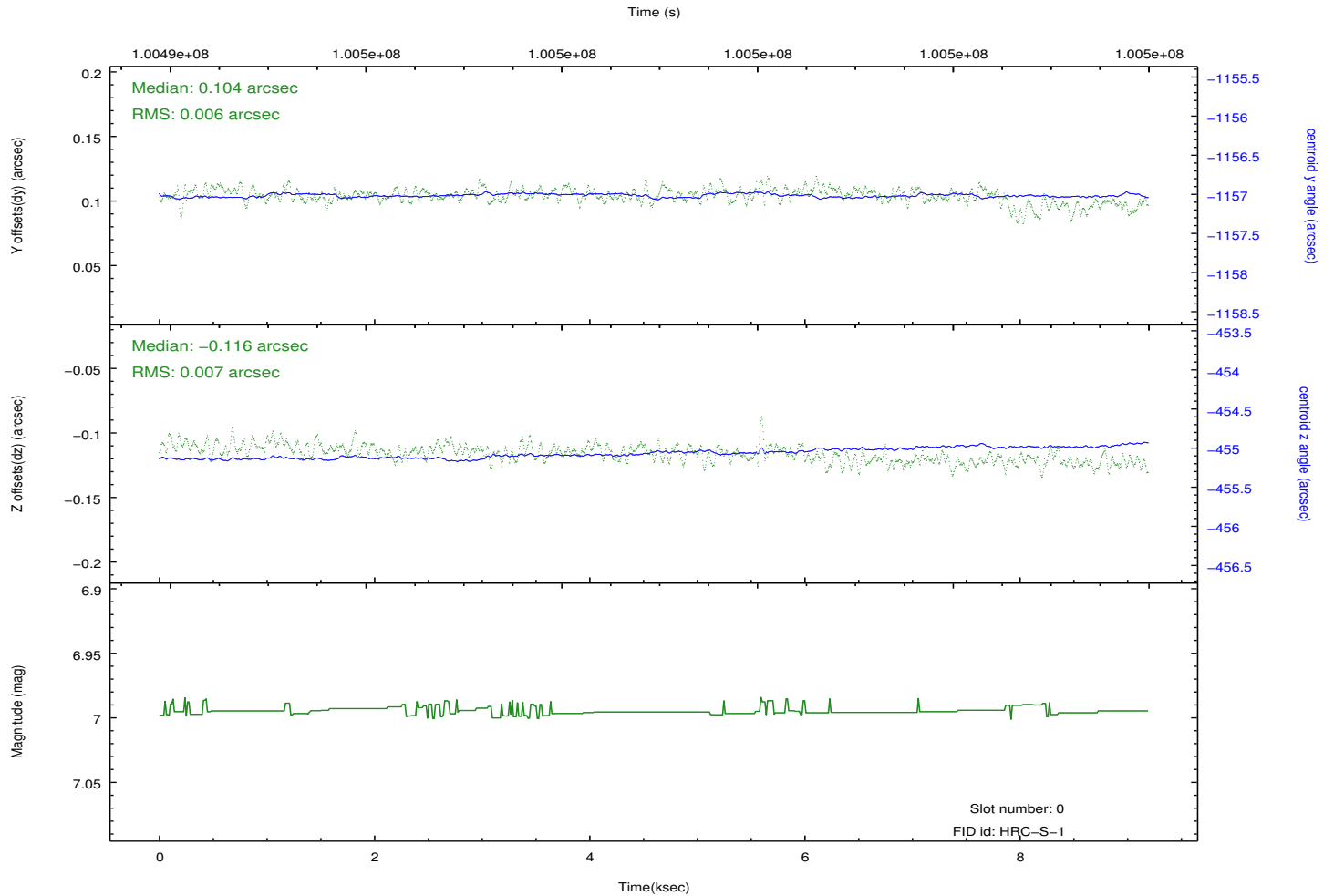
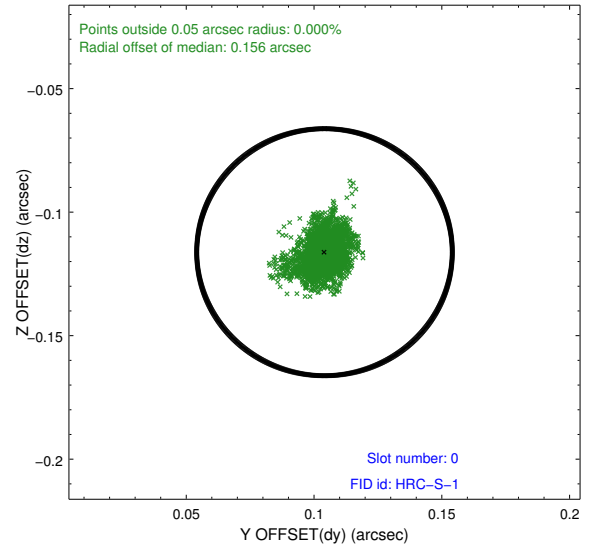
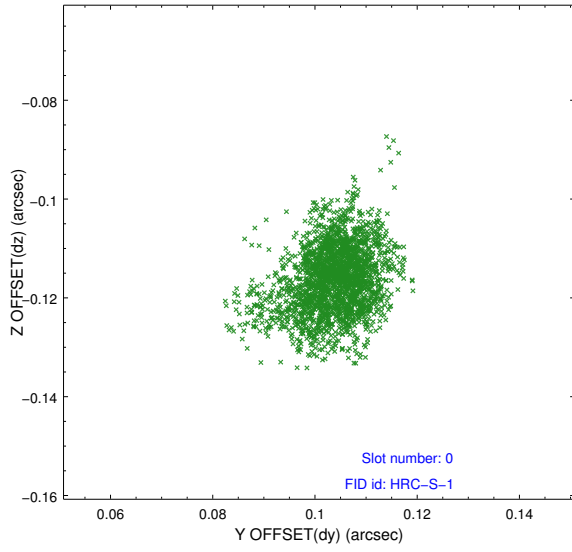


2.4.5 Slot 7

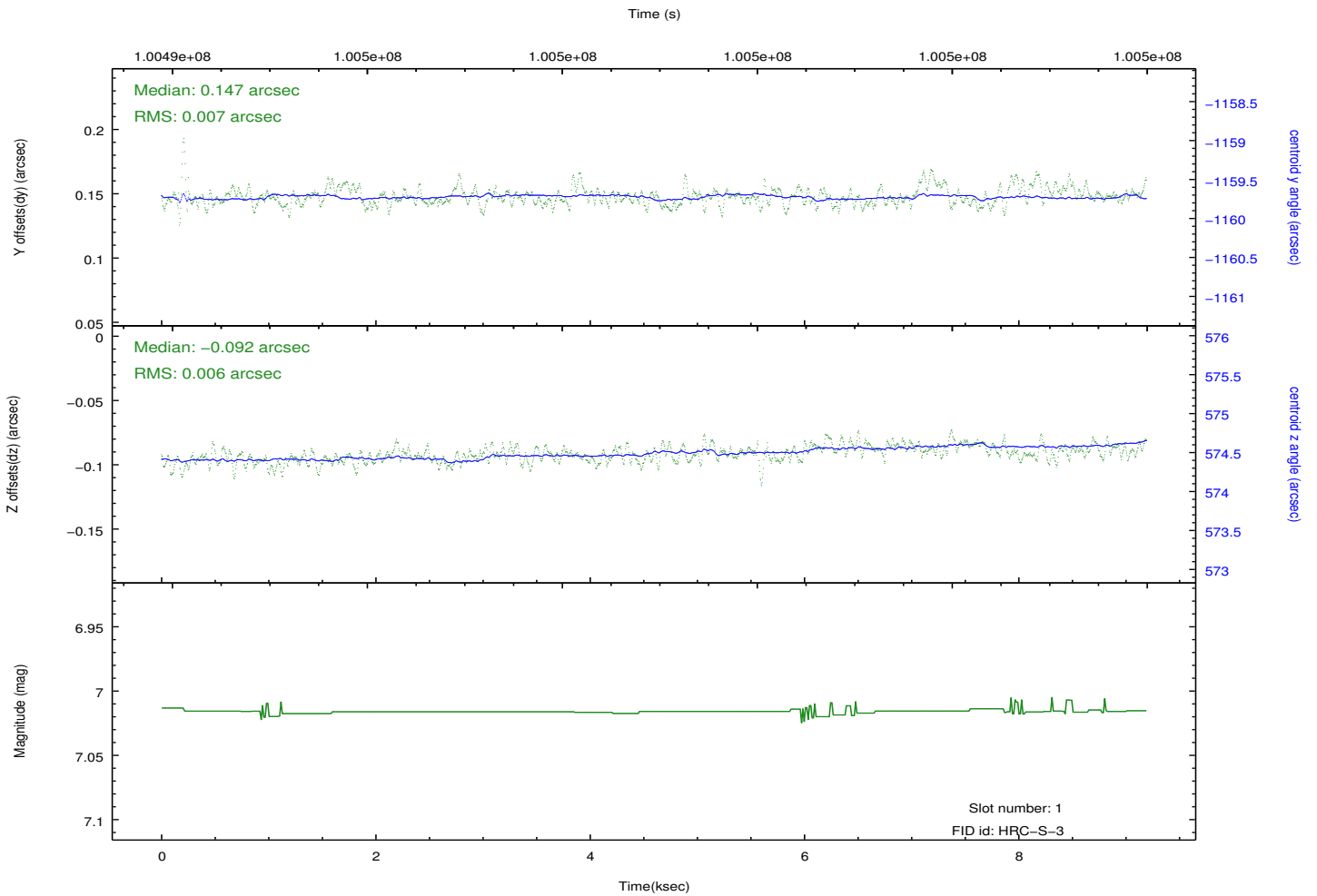
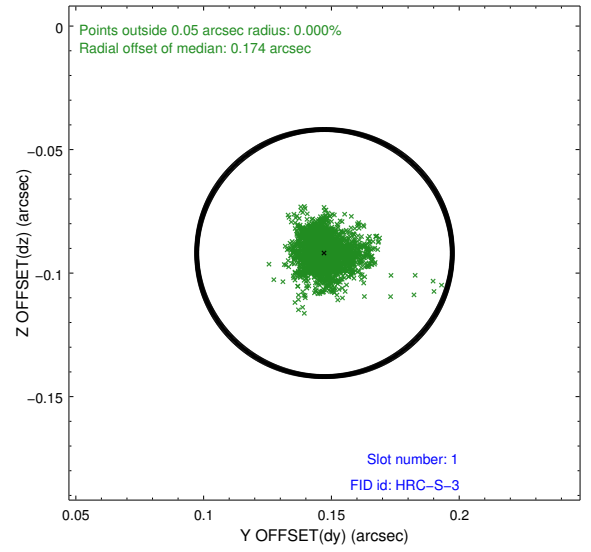
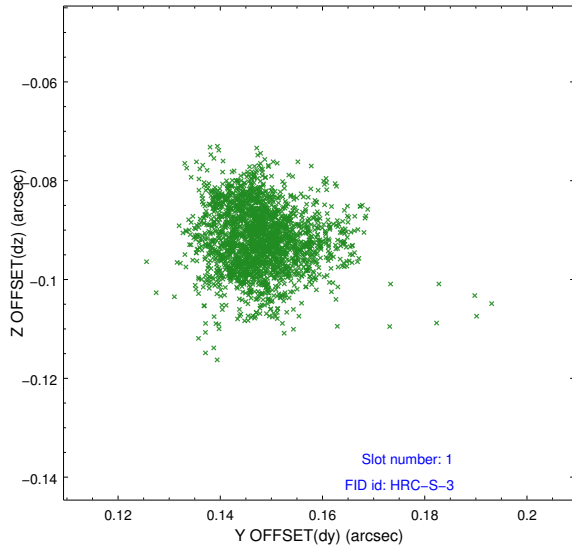


2.5 FID Slots

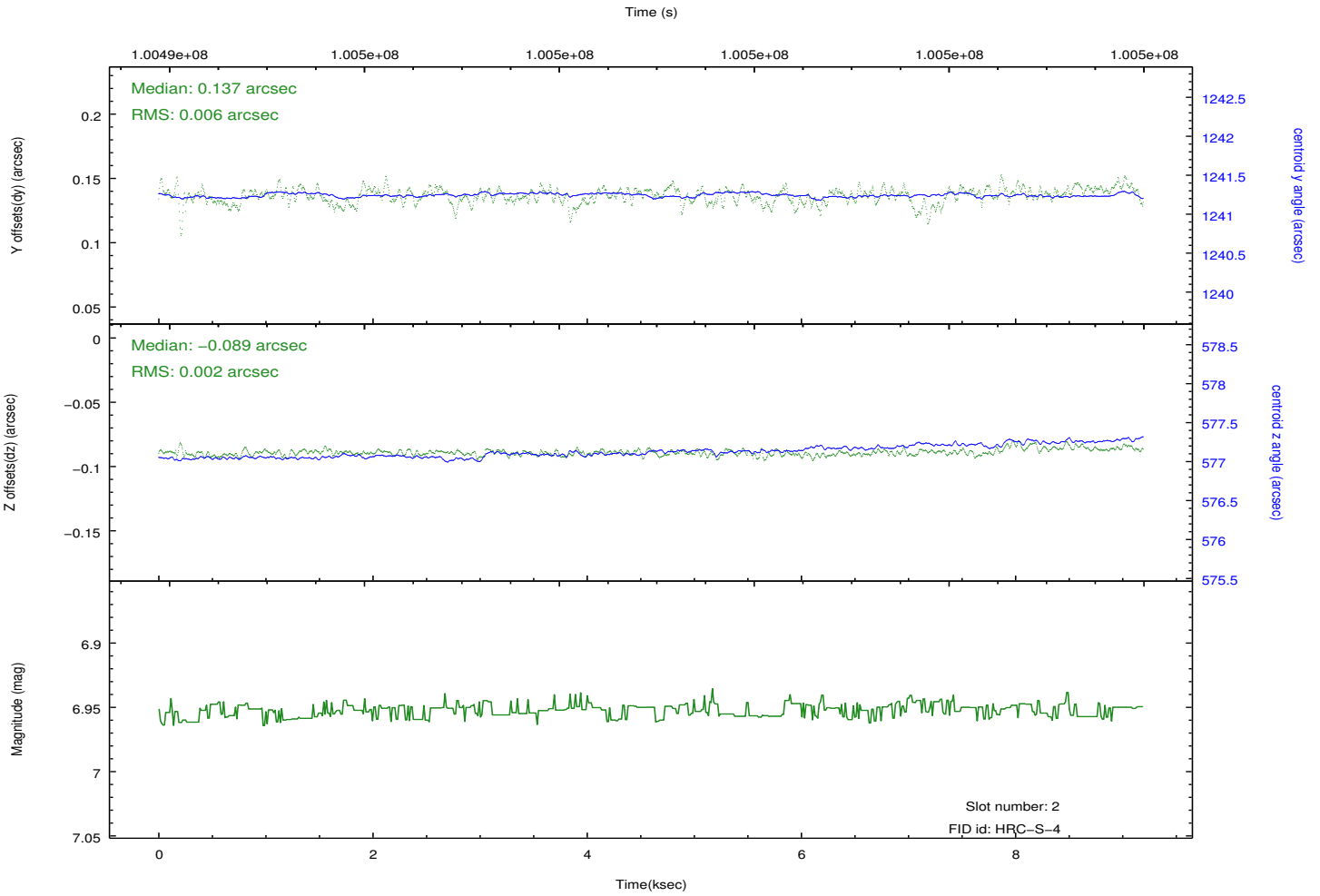
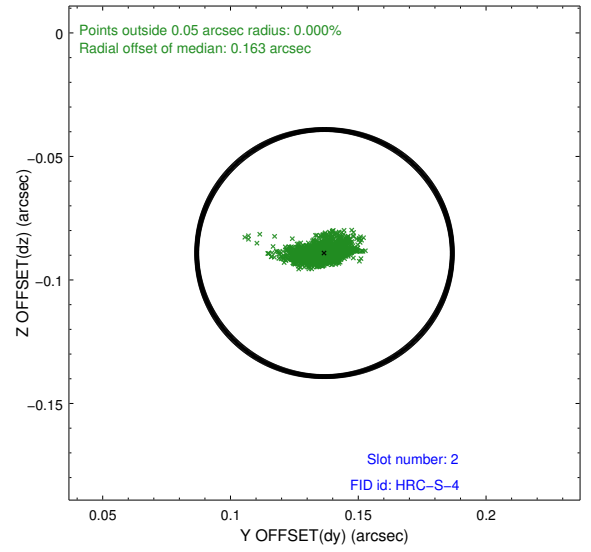
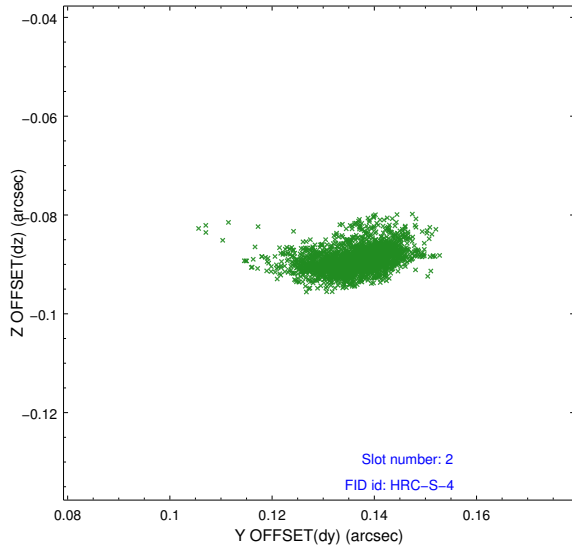
2.5.1 Slot 0



2.5.2 Slot 1



2.5.3 Slot 2



A Summary

A.1 Status

V&V Scientist	Jen Lauer
V&V Date (YYYY-MM-DD)	2012.09.17
V&V Edition	1
V&V Disposition and Status	OK
V&V Charge Time	8.849

A.2 Comments

Window constraint met.