

V&V Reference Report

L2 ASCDS Version : 8.5.1.1

Observation 15637 - L2 Version 2
Chandra X-Ray Center

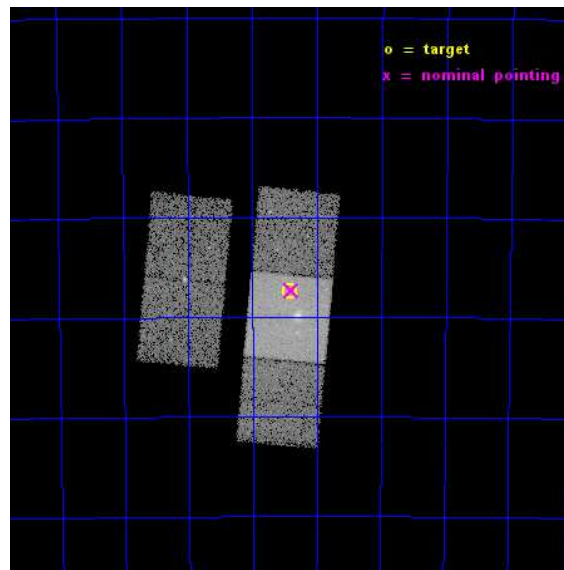
L2 Processing Date : Dec 2 2014

Contents

1	Front	2
2	OBI	3
2.1	OBI	3
2.1.1	Images	3
2.1.2	Bias	3
2.1.3	Parameters	4
2.1.4	Events	4
2.2	Compared Parameters	5
2.3	Aspect	6
2.4	Star Slots	9
2.4.1	Slot 3	9
2.4.2	Slot 4	10
2.4.3	Slot 5	11
2.4.4	Slot 6	12
2.4.5	Slot 7	13
2.5	FID Slots	14
2.5.1	Slot 0	14
2.5.2	Slot 1	15
2.5.3	Slot 2	16
A	Summary	17
A.1	Status	17
A.2	Comments	17

1 Front

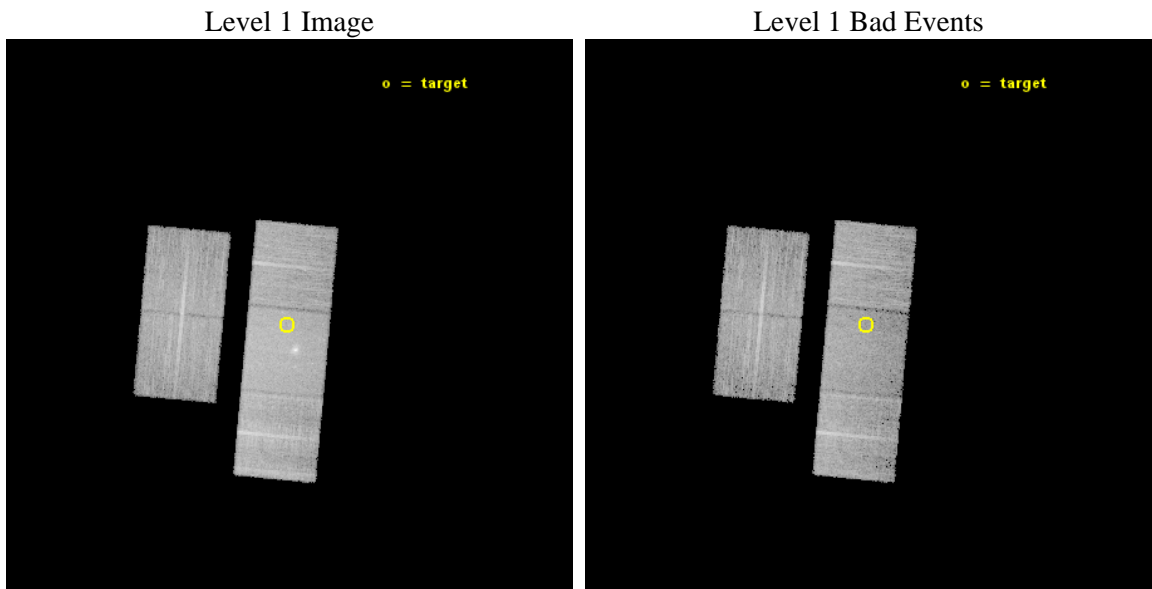
seq_num	702922	Sequence number
obs_id	15637	Observation id
title	Confirm the Nuclear Origin of the Post-flare Hard Spectrum from a Tidal Disruption Event Candidate	Proposal title
observer	Dr. Dacheng Lin	Principal investigator
object	2XMMI J184725.1-631724	Source name
dtcycle	0	
cycle	P	events from which exps? Prim/Second/Both
ra_targ	281.855	Observer's specified target RA [deg]
dec_targ	-63.290278	Observer's specified target Dec [deg]
ra_nom	281.84903164095	Nominal RA [deg]
dec_nom	-63.28886922462	Nominal Dec [deg]
roll_nom	95.314583985589	Nominal Roll [deg]
revision	2	Processing version of data
ontime	15069.100115895	Sum of GTIs [s]
livetime	14872.211229171	Livetime [s]
ontime2	15069.100115895	Sum of GTIs [s]
ontime3	15069.100115895	Sum of GTIs [s]
ontime6	15069.100115895	Sum of GTIs [s]
ontime7	15069.100115895	Sum of GTIs [s]
ontime8	15069.100115895	Sum of GTIs [s]
l2events	93500	Number of level 2 events



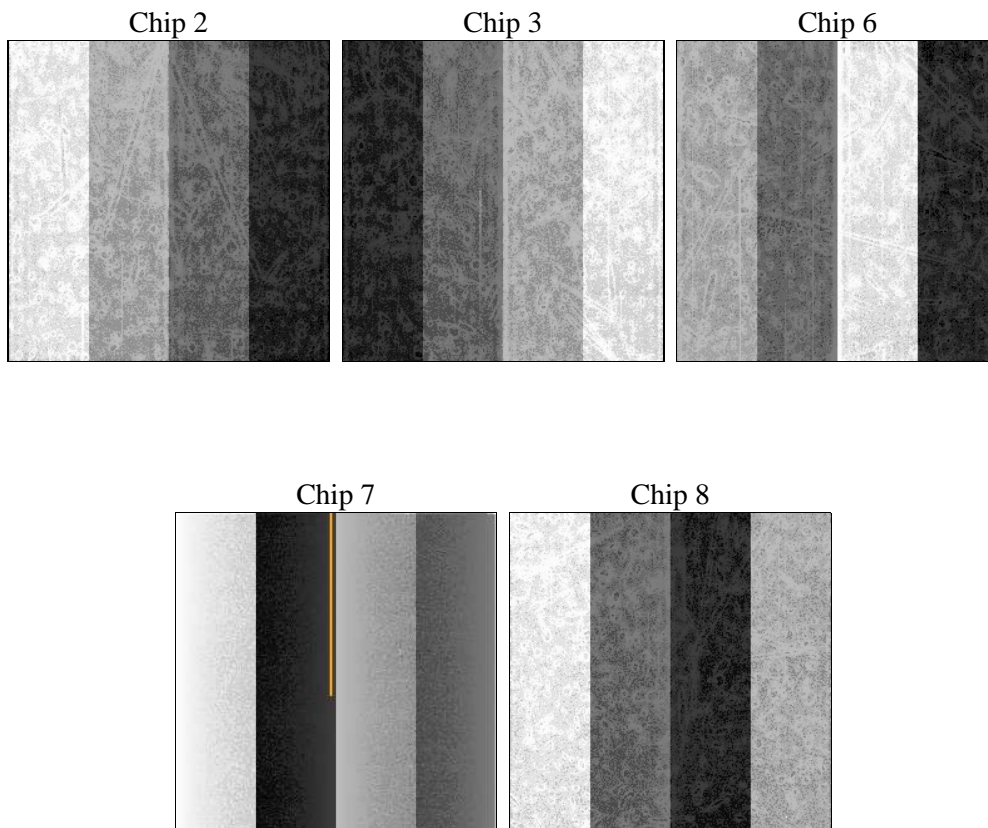
2 OBI

2.1 OBI

2.1.1 Images



2.1.2 Bias



2.1.3 Parameters

obi_num	0	Obi number	sched_exp_time	15000.885000	[s] Scheduled observation exposure time
ascdsver	10.3	Processing system revision	ontime	15069.100115895	Sum of GTIs [s]
caldbver	4.6.4	 	ontime2	15069.100115895	Sum of GTIs [s]
date	2014-12-02T12:58:58	Date and time of file creation	ontime3	15069.100115895	Sum of GTIs [s]
revision	2	Processing version of data	ontime6	15069.100115895	Sum of GTIs [s]
			ontime7	15069.100115895	Sum of GTIs [s]
			ontime8	15069.100115895	Sum of GTIs [s]
			l1events	466769	Number of level 1 events

2.1.4 Events

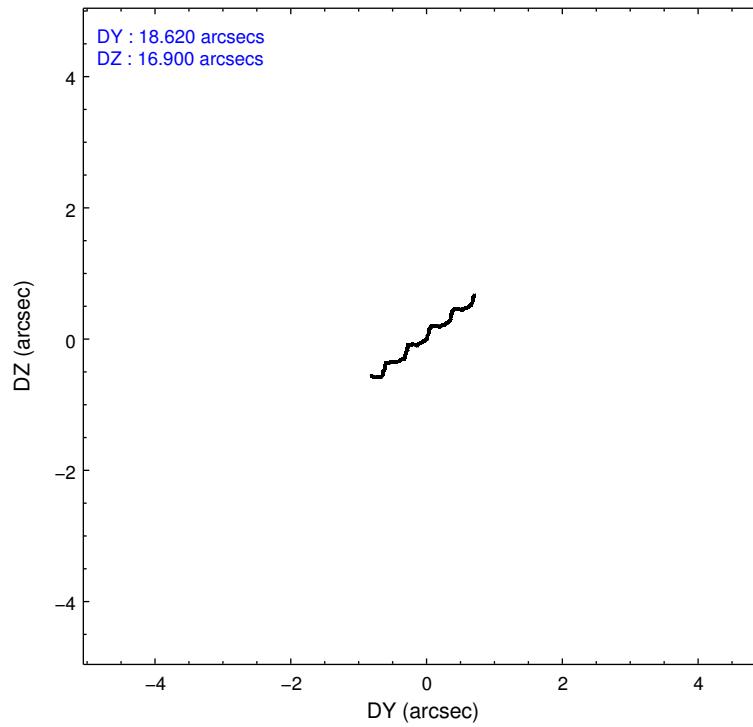
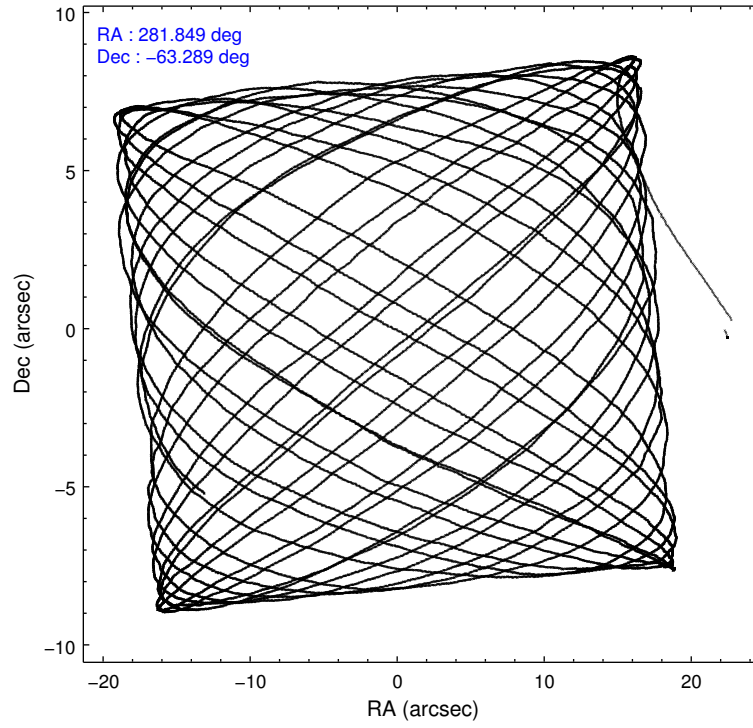
	ccd 2	ccd 3	ccd 6	ccd 7	ccd 8
level 1 events	78507	78594	84623	116010	109035
rejected events	68275	68572	72802	60939	78496
rejected %	86%	87%	86%	52%	71%

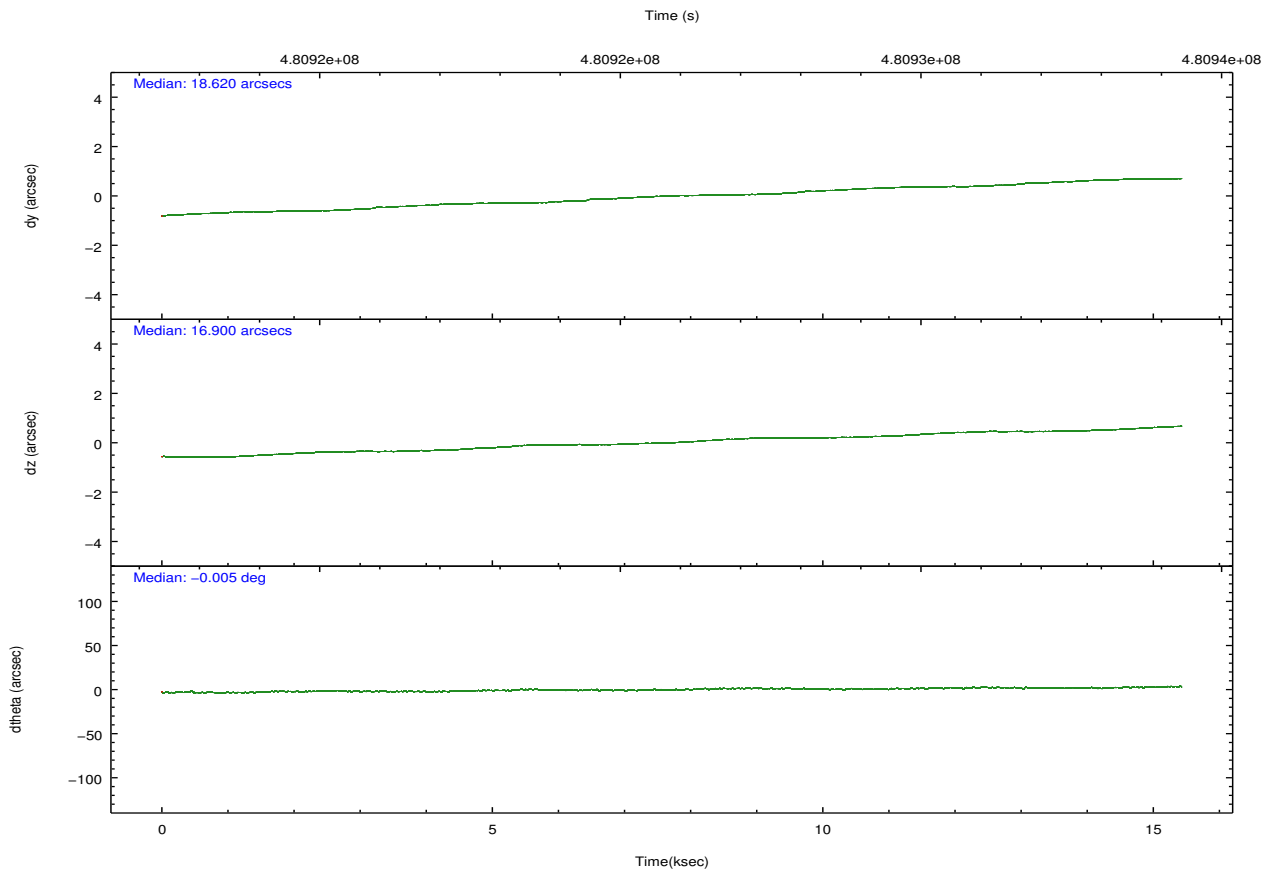
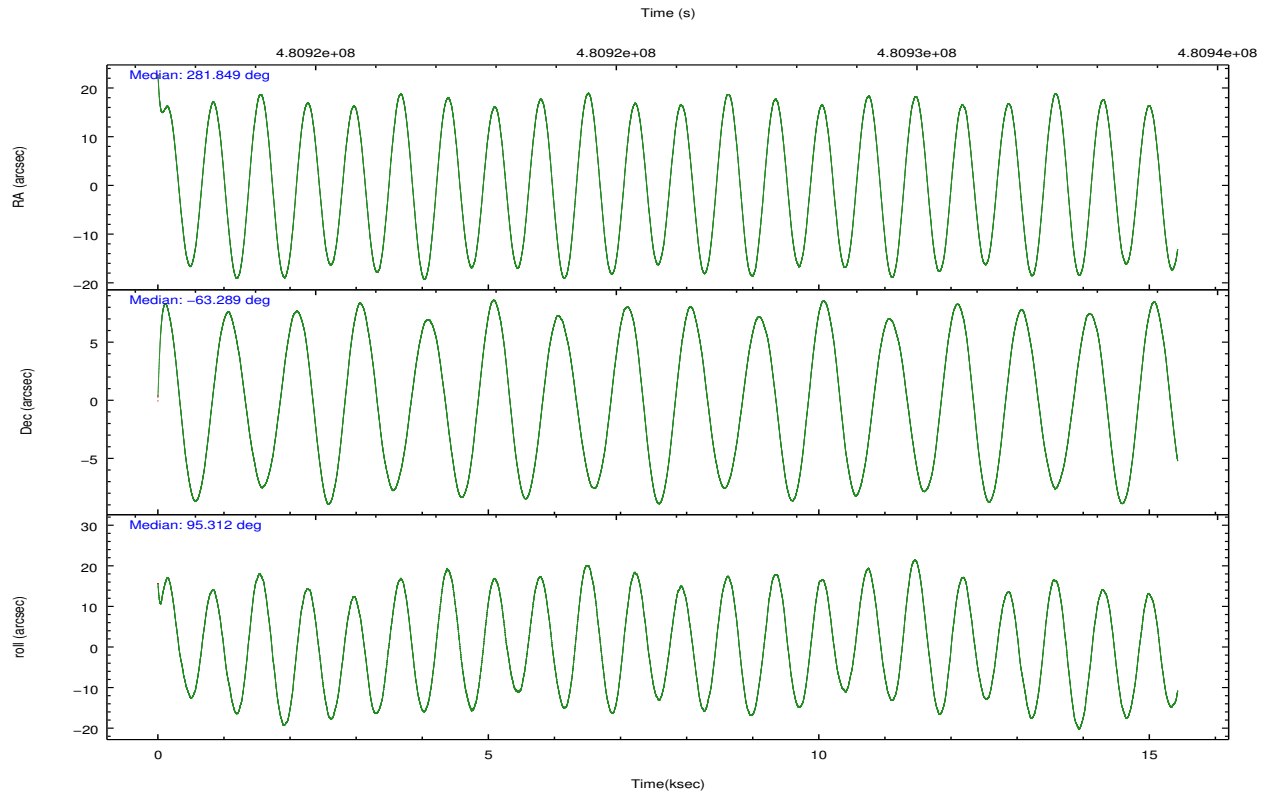
	ccd 2	ccd 3	ccd 6	ccd 7	ccd 8
grade 0 events	4220	4011	5094	6601	9643
	5%	5%	6%	5%	8%
grade 1 events	50	47	54	130	76
	0%	0%	0%	0%	0%
grade 2 events	2249	2160	2385	11832	6953
	2%	2%	2%	10%	6%
grade 3 events	942	963	1047	5023	3050
	1%	1%	1%	4%	2%
grade 4 events	998	1050	1072	5000	2857
	1%	1%	1%	4%	2%
grade 5 events	3437	4285	4208	11138	6099
	4%	5%	4%	9%	5%
grade 6 events	1827	1841	2225	26627	8040
	2%	2%	2%	22%	7%
grade 7 events	64784	64237	68538	49659	72317
	82%	81%	80%	42%	66%

2.2 Compared Parameters

Parameter	Planned	Actual	Parameter	Planned	Actual
Instrument	ACIS	ACIS	Obspar format version number	7	7
Detector	ACIS-23678	ACIS-23678	Obspar file type	PREDICTED	ACTUAL
Grating	NONE	NONE	Obspar update status	NONE	UPDATED
Data mode	FAINT	FAINT	Number of optional ACIS chips dropped	0	0
Observation mode	POINTING	POINTING	On-chip summing requested	N	N
[deg] Pointing RA	281.884870	281.8490316409515	Subarray requested	NONE	NONE
[deg] Pointing Dec	-63.310996	-63.28886922461976	Alternating exposures requested	N	N
[deg] Pointing Roll	95.189984	95.314583985589	[s] Primary exposure time	0.000000	3.1
[mm] SIM focus pos	-0.684267	-0.6828225247311905			
[mm] SIM defocus	0	0.001444936568705701			
[mm] SIM translation stage pos	-190.132523	-190.1425803651734			
[mm] SIM translation stage offset	0	0.01005778216563158			
[s] Observation start time (MET)	480918573.184000	480917509.48559			
Observation start date	2013-03-29T04:28:26	2013-03-29T04:11:49			
[s] Observation end time (MET)	480933574.184000	480933799.81147			
Observation end date	2013-03-29T08:38:27	2013-03-29T08:43:19			
Read mode	TIMED	TIMED			

2.3 Aspect





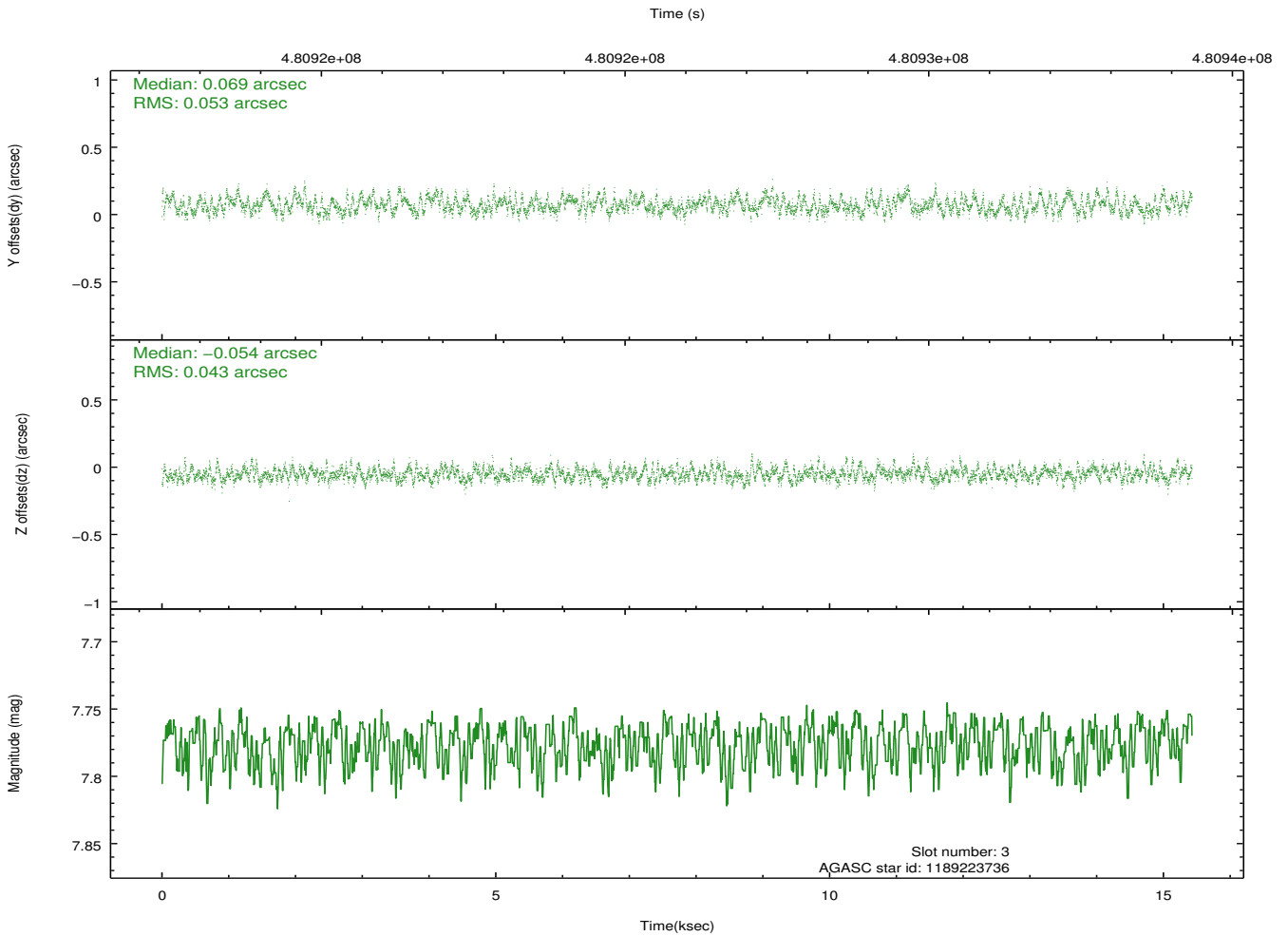
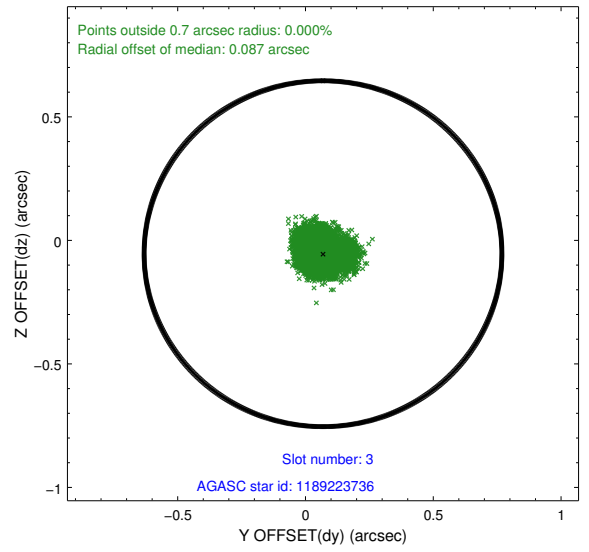
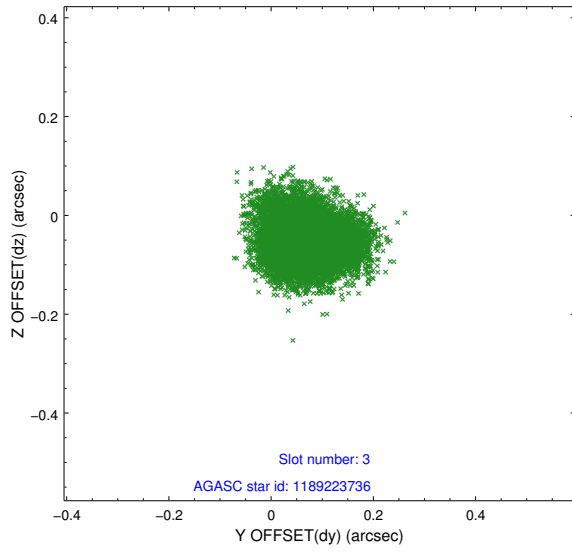
Slot Statistics

slot	status	used	id	mag	n_pts	med_dy	med_dz	dr1	dr2	ra	dec	mean_y	mean_z
0	FID		ACIS-S-1	7.06	3764	0.075	-0.075	0.020	0.037	0.000000	0.000000	924.44	-1734.00
1	FID		ACIS-S-4	7.06	3763	0.198	0.018	0.014	0.020	0.000000	0.000000	2142.13	169.94
2	FID		ACIS-S-5	7.09	3764	-0.298	0.068	0.013	0.020	0.000000	0.000000	-1824.43	163.91
3	GUIDE	used	1189223736	7.78	7526	0.069	-0.054	0.073	0.114	282.264494	-63.269528	91.34	-625.29
4	GUIDE	used	1189224120	8.78	7519	-0.440	-0.455	0.075	0.122	280.452005	-62.774497	2110.25	2177.65
5	GUIDE	used	1189362408	8.90	7525	-0.037	0.320	0.095	0.147	283.011284	-63.498822	-852.62	-1738.49
6	GUIDE	used	1189752608	9.46	7502	0.009	-0.312	0.115	0.182	280.957335	-63.966199	-2227.31	1673.54
7	GUIDE	used	1189882216	9.50	7479	0.395	0.498	0.129	0.206	283.229469	-63.889912	-2290.41	-1930.09

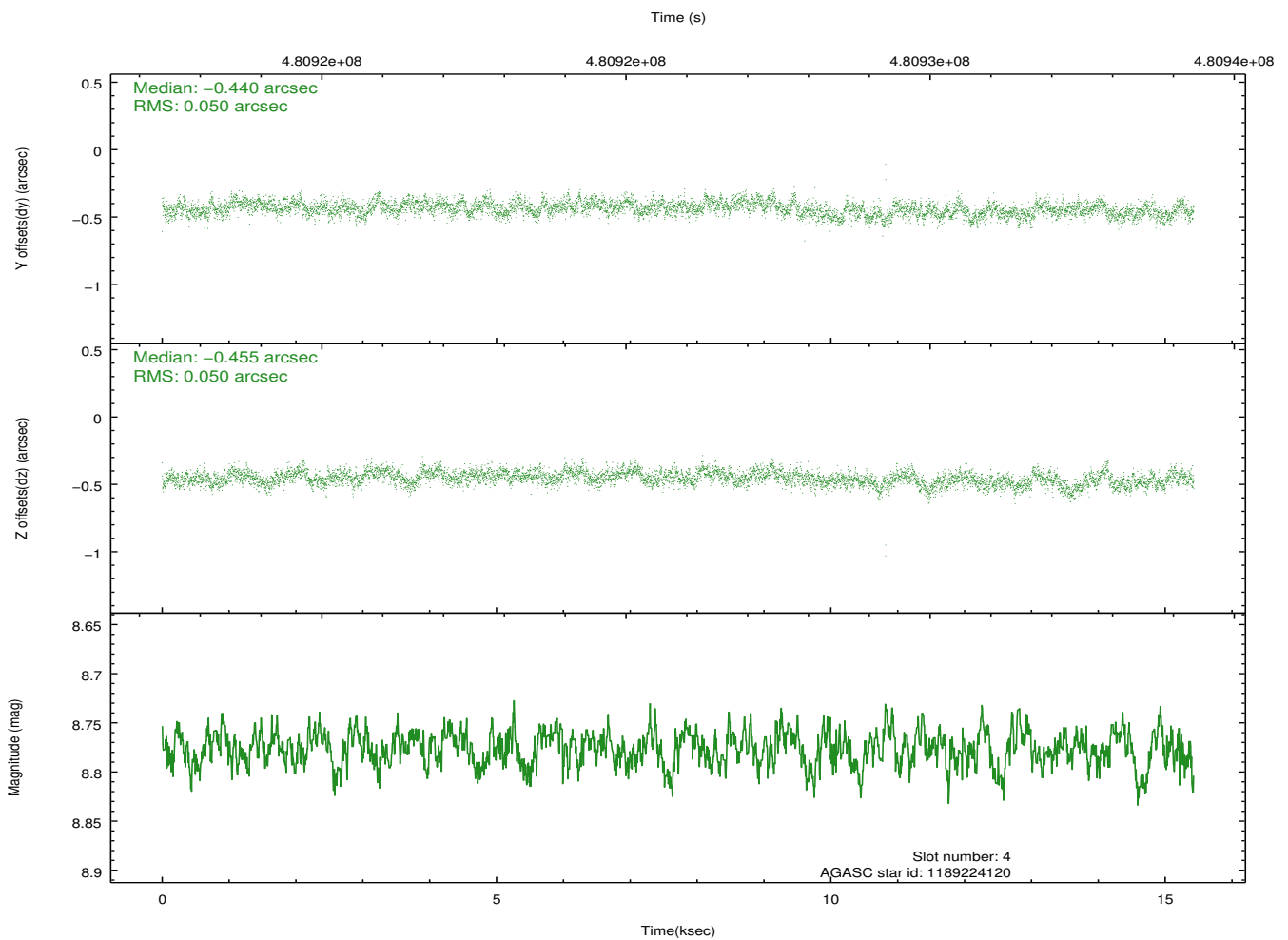
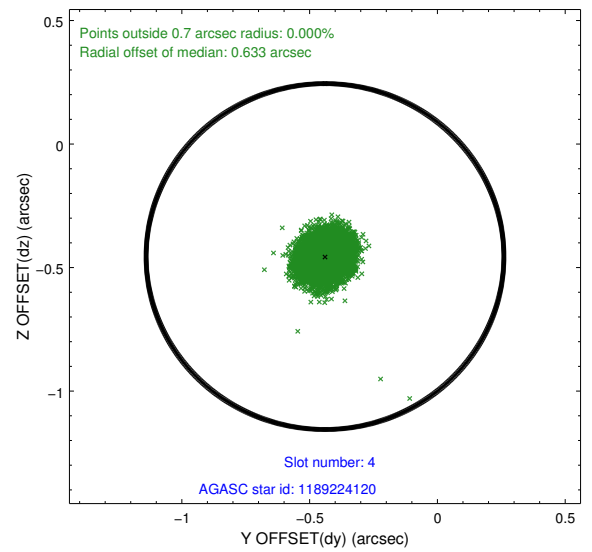
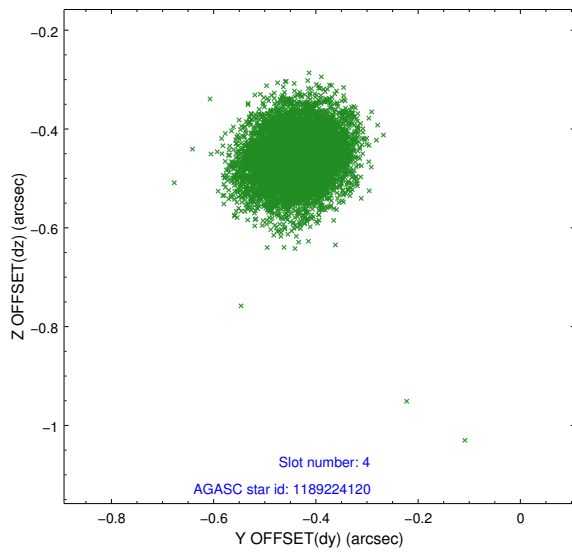
∞

2.4 Star Slots

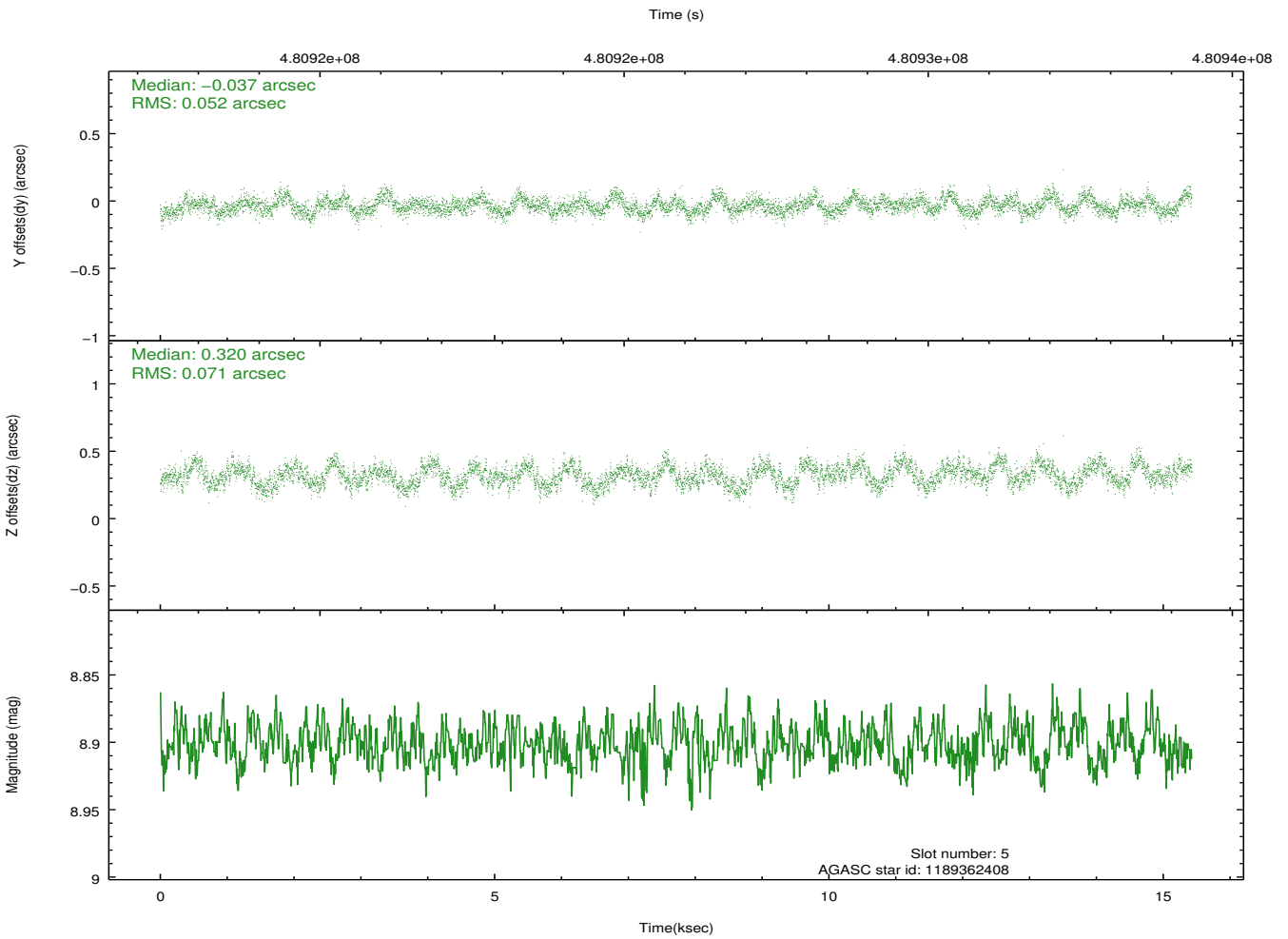
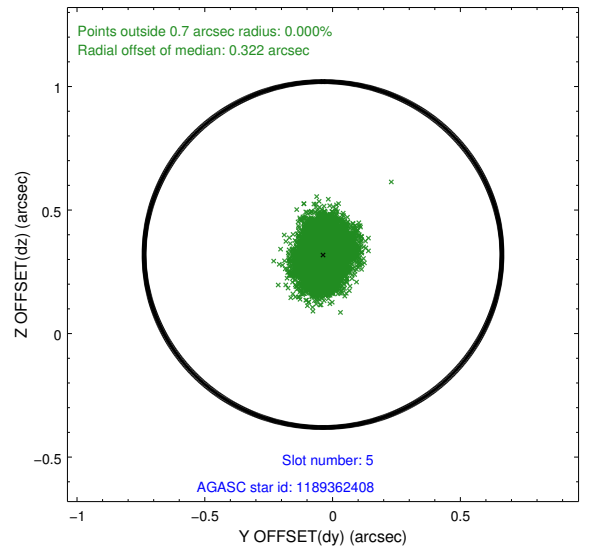
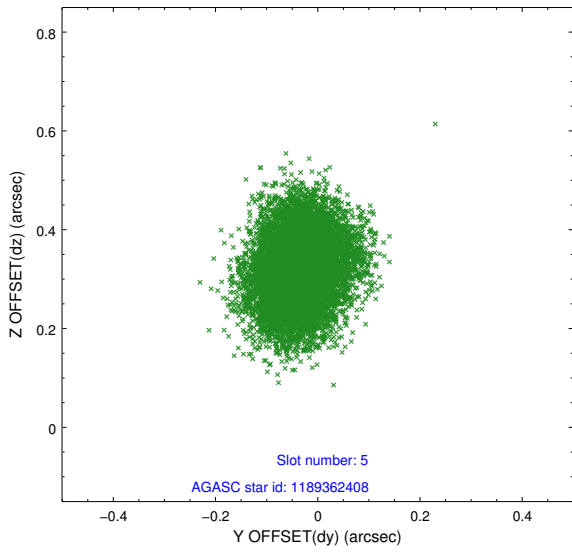
2.4.1 Slot 3



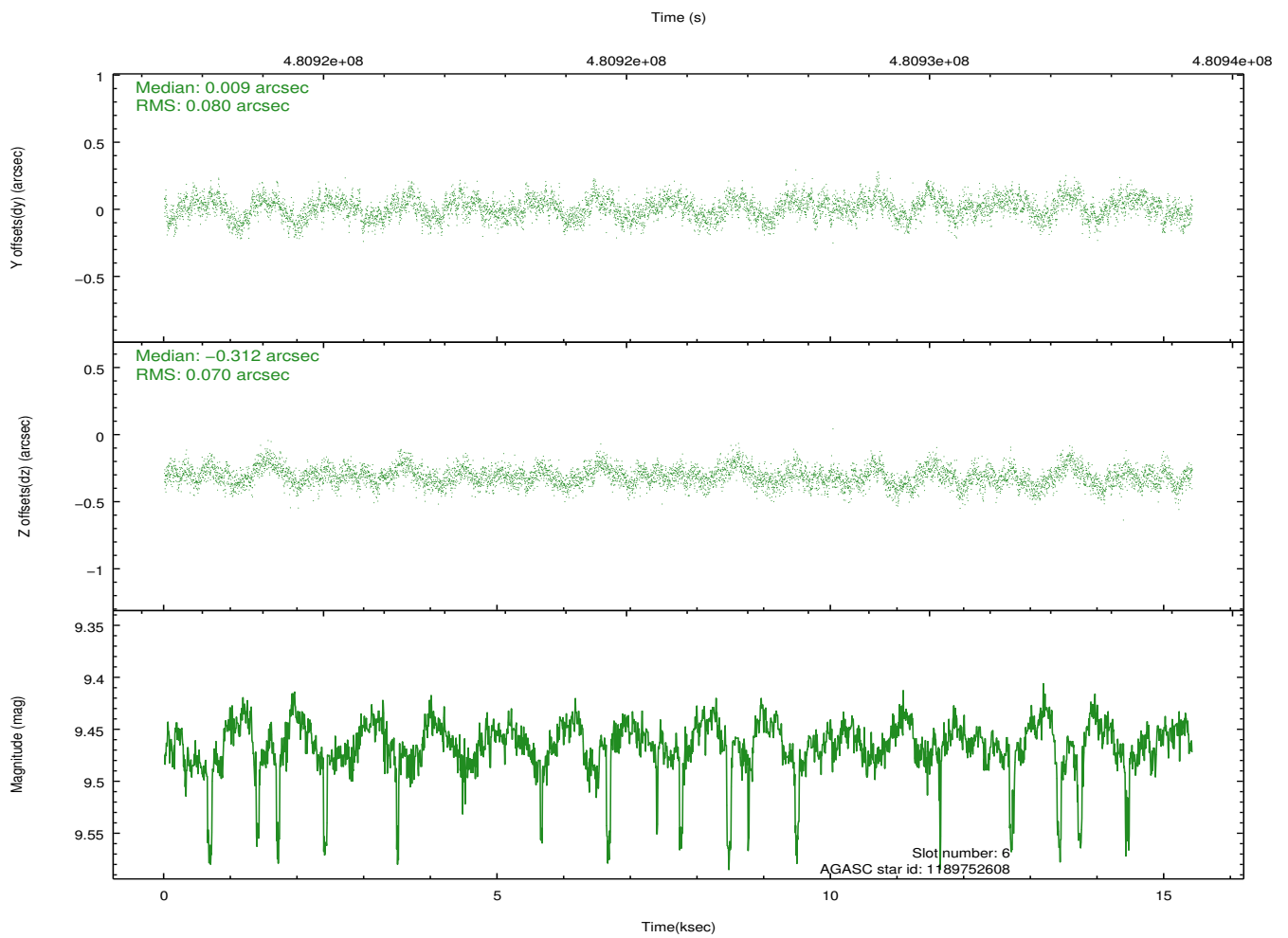
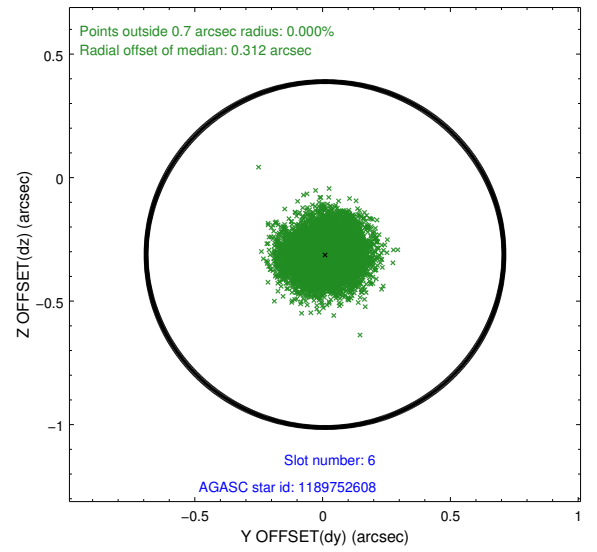
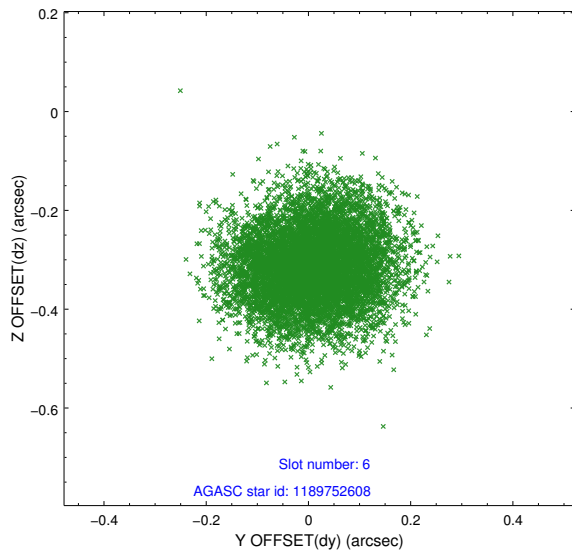
2.4.2 Slot 4



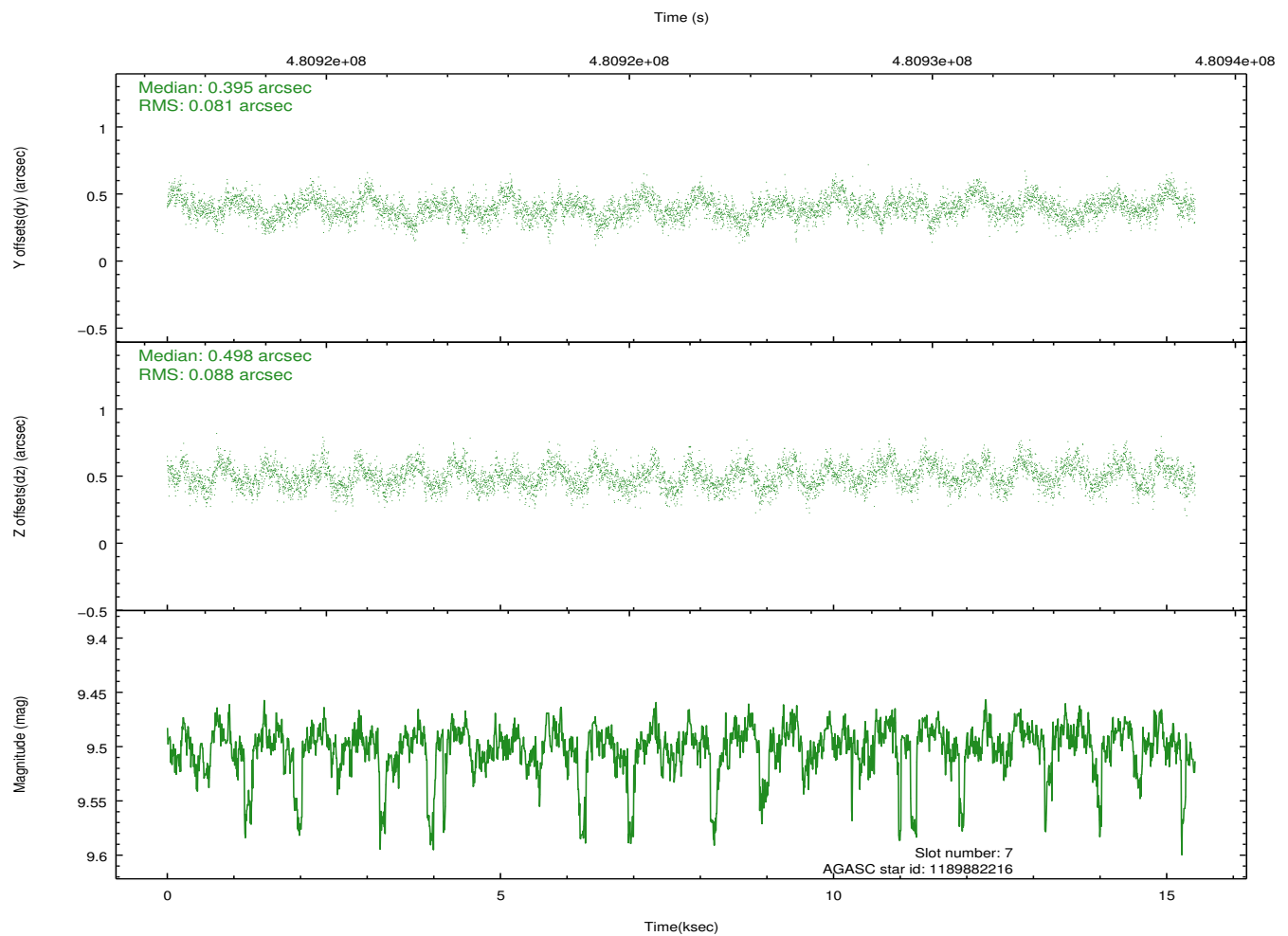
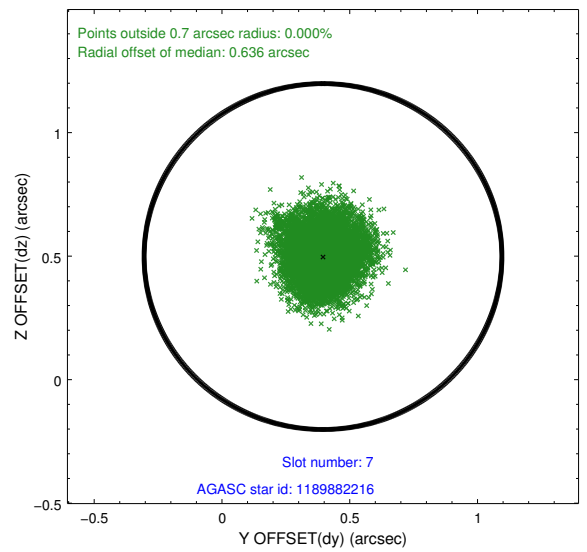
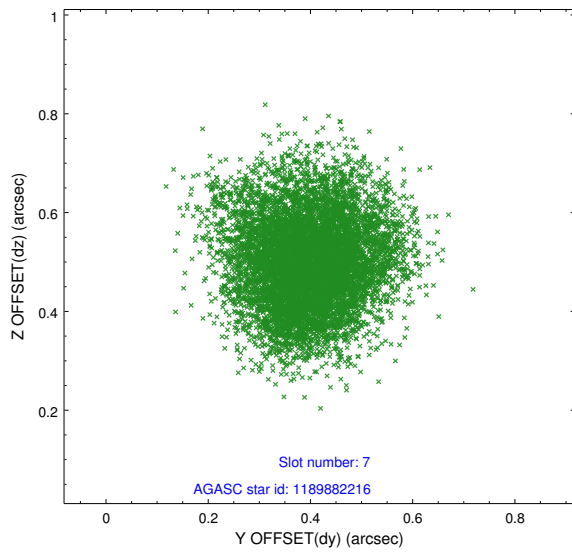
2.4.3 Slot 5



2.4.4 Slot 6

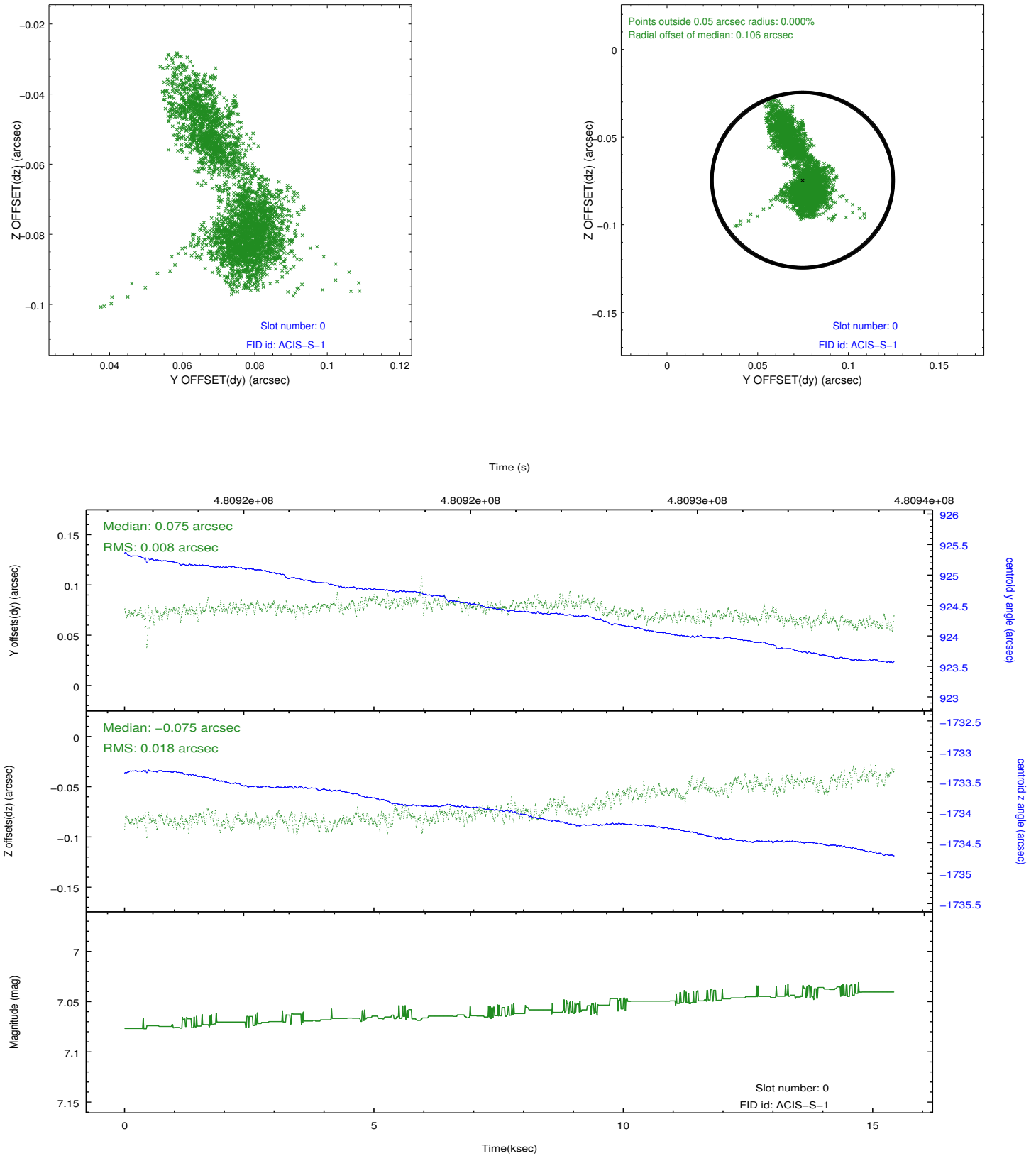


2.4.5 Slot 7

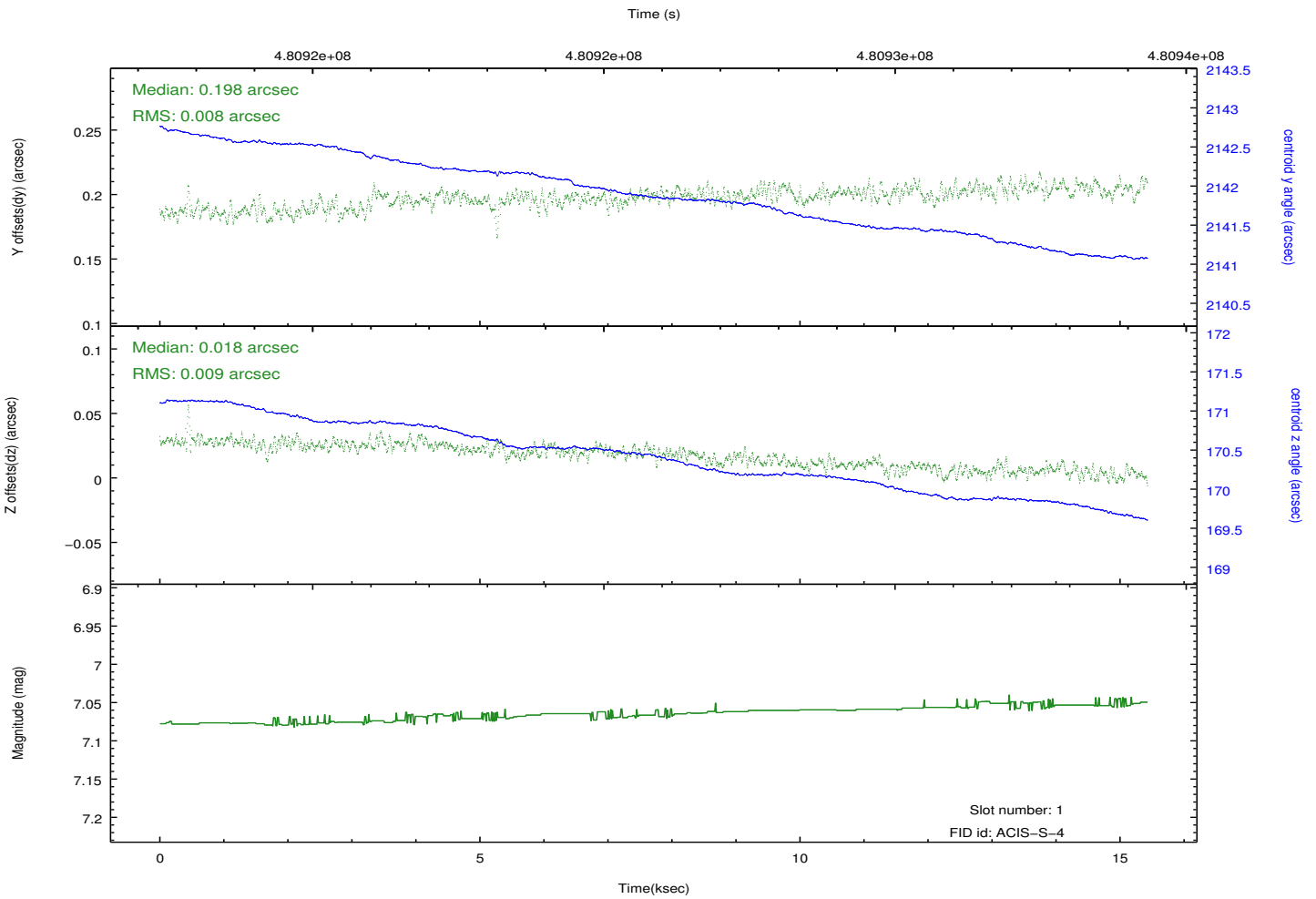
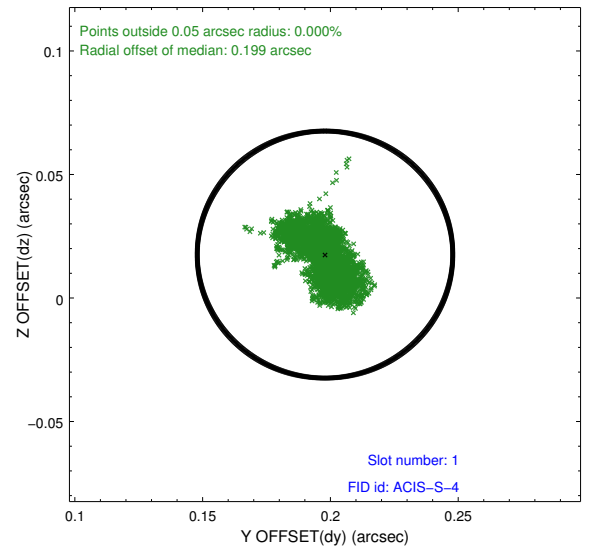
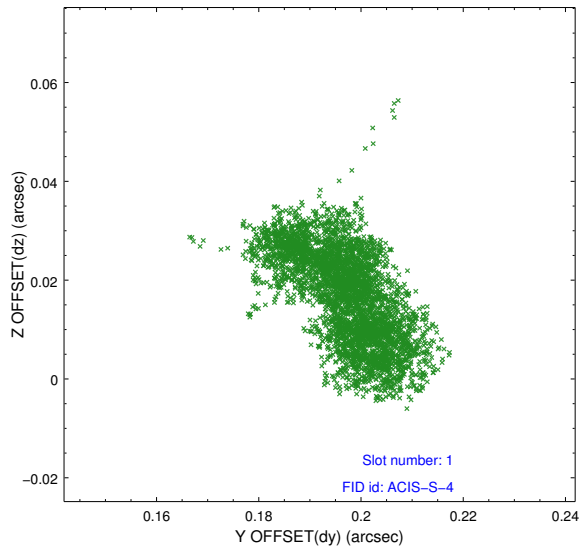


2.5 FID Slots

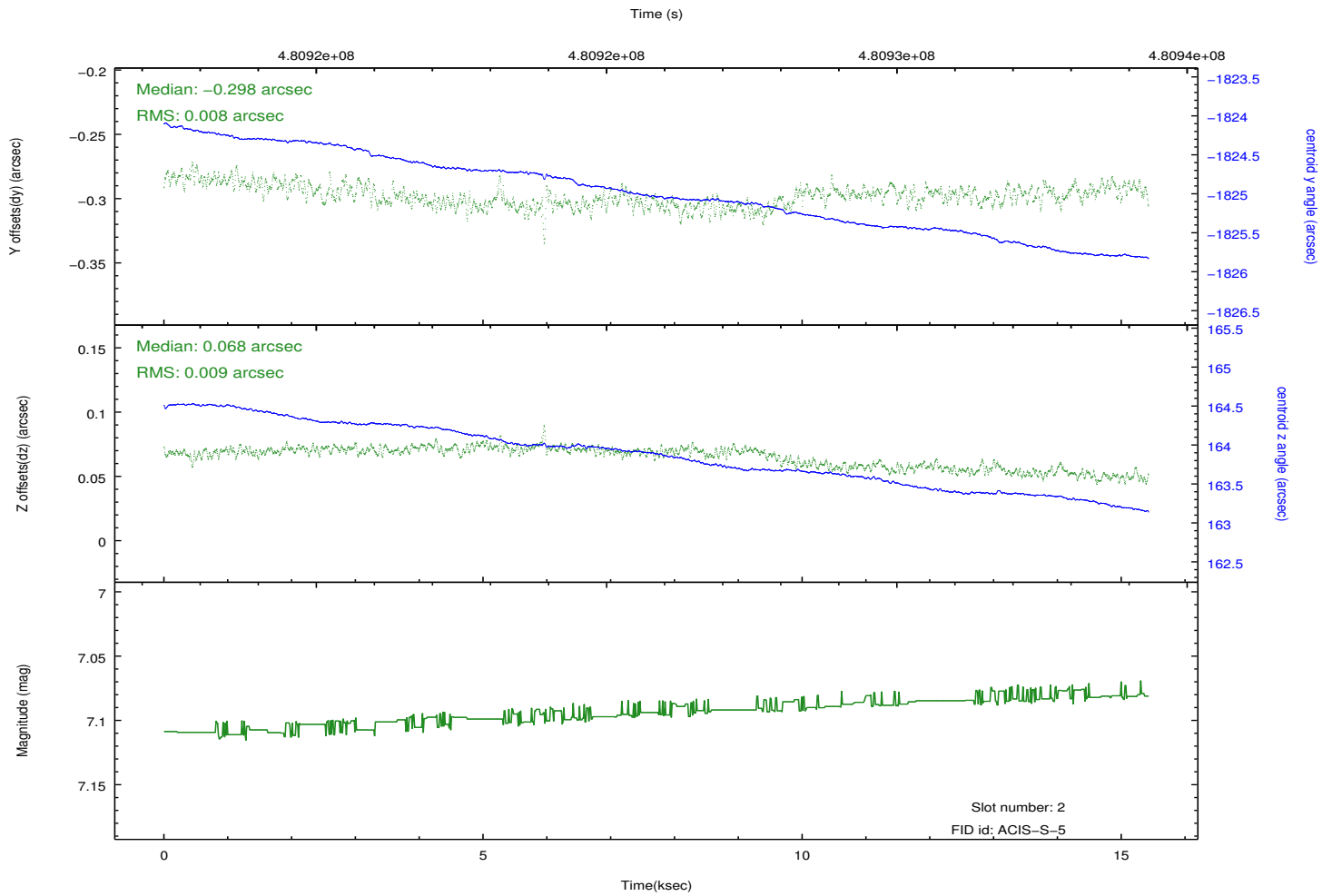
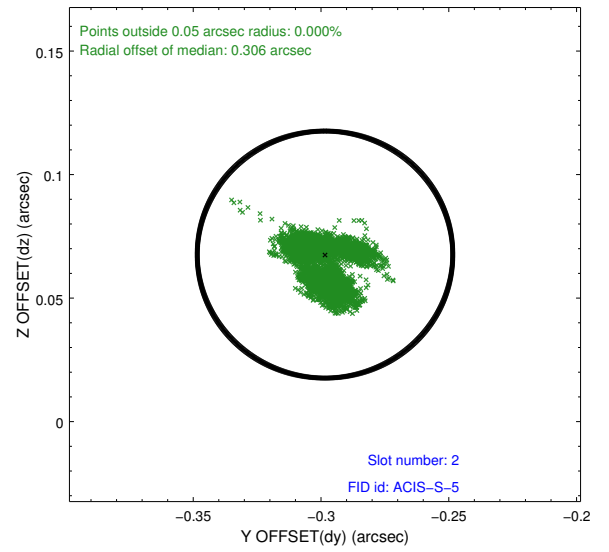
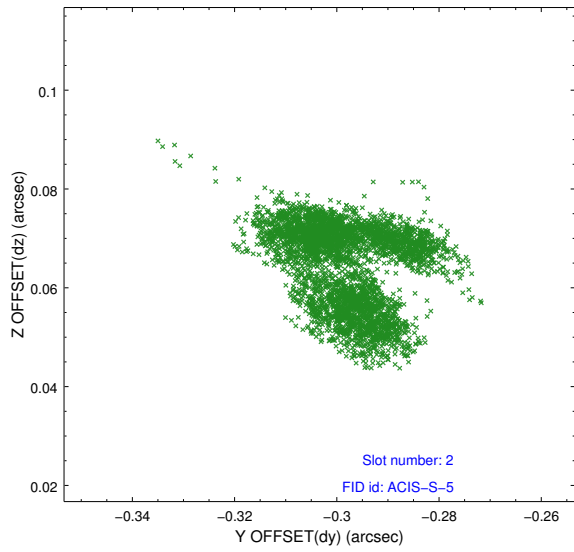
2.5.1 Slot 0



2.5.2 Slot 1



2.5.3 Slot 2



A Summary

A.1 Status

V&V Scientist	Jen Lauer
V&V Date (YYYY-MM-DD)	2014.12.10
V&V Edition	1
V&V Disposition and Status	OK
V&V Charge Time	15.069100115895

A.2 Comments

These data have been reprocessed with new aspect alignment calibration files that correct small mean offsets (up to 0.4 arcsecs) and improve overall astrometric accuracy. The new calibration was determined using data from the time period being reprocessed and was performed using cross-correlation of X-ray sources with radio and optical counterparts.