

V&V Reference Report

L2 ASCDS Version : 10.2.4

Observation 15807 - L2 Version 1
Chandra X-Ray Center

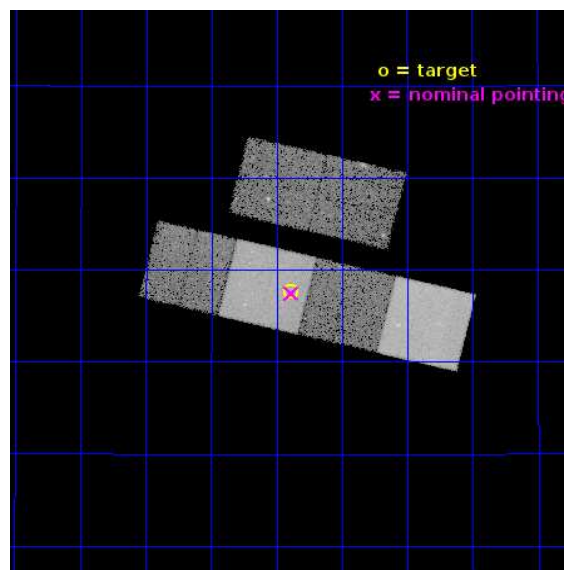
L2 Processing Date : Oct 5 2014

Contents

1	Front	2
2	OBI	3
2.1	OBI	3
2.1.1	Images	3
2.1.2	Bias	3
2.1.3	Parameters	4
2.1.4	Events	4
2.2	Compared Parameters	5
2.3	Aspect	6
2.4	Star Slots	9
2.4.1	Slot 3	9
2.4.2	Slot 4	10
2.4.3	Slot 5	11
2.4.4	Slot 6	12
2.4.5	Slot 7	13
2.5	FID Slots	14
2.5.1	Slot 0	14
2.5.2	Slot 1	15
2.5.3	Slot 2	16
A	Summary	17
A.1	Status	17
A.2	Comments	17

1 Front

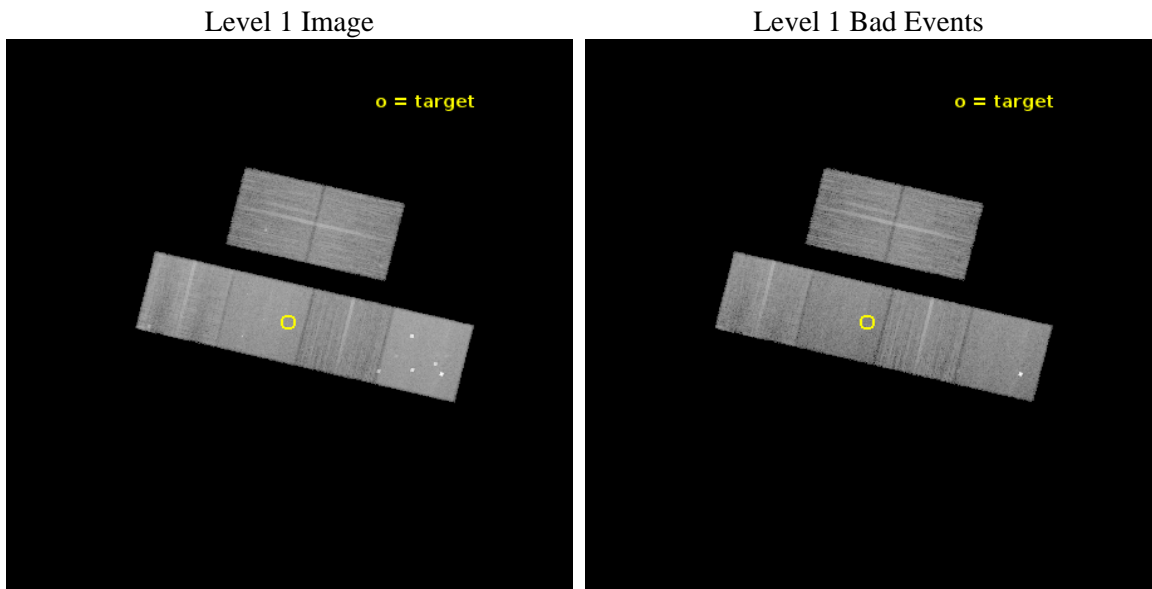
seq_num	502040	Sequence number
obs_id	15807	Observation id
title	Measuring the Explosion Geometry of Short GRBs: Implications for Energetics and Rates	Proposal title
observer	Fong Wen-fai	Principal investigator
object	GRB 140930B	Source name
dtcycle	0	
cycle	P	events from which exps? Prim/Second/Both
ra_targ	6.347708	Observer's specified target RA [deg]
dec_targ	24.294167	Observer's specified target Dec [deg]
ra_nom	6.3465374822638	Nominal RA [deg]
dec_nom	24.291241267624	Nominal Dec [deg]
roll_nom	193.57736192056	Nominal Roll [deg]
revision	1	Processing version of data
ontime	23750.399911582	Sum of GTIs [s]
livetime	23449.658047128	Livetime [s]
ontime2	23750.399911582	Sum of GTIs [s]
ontime3	23747.15886116	Sum of GTIs [s]
ontime5	23750.399911582	Sum of GTIs [s]
ontime6	23750.399911582	Sum of GTIs [s]
ontime7	23750.399911582	Sum of GTIs [s]
ontime8	23747.159000635	Sum of GTIs [s]
l2events	202915	Number of level 2 events



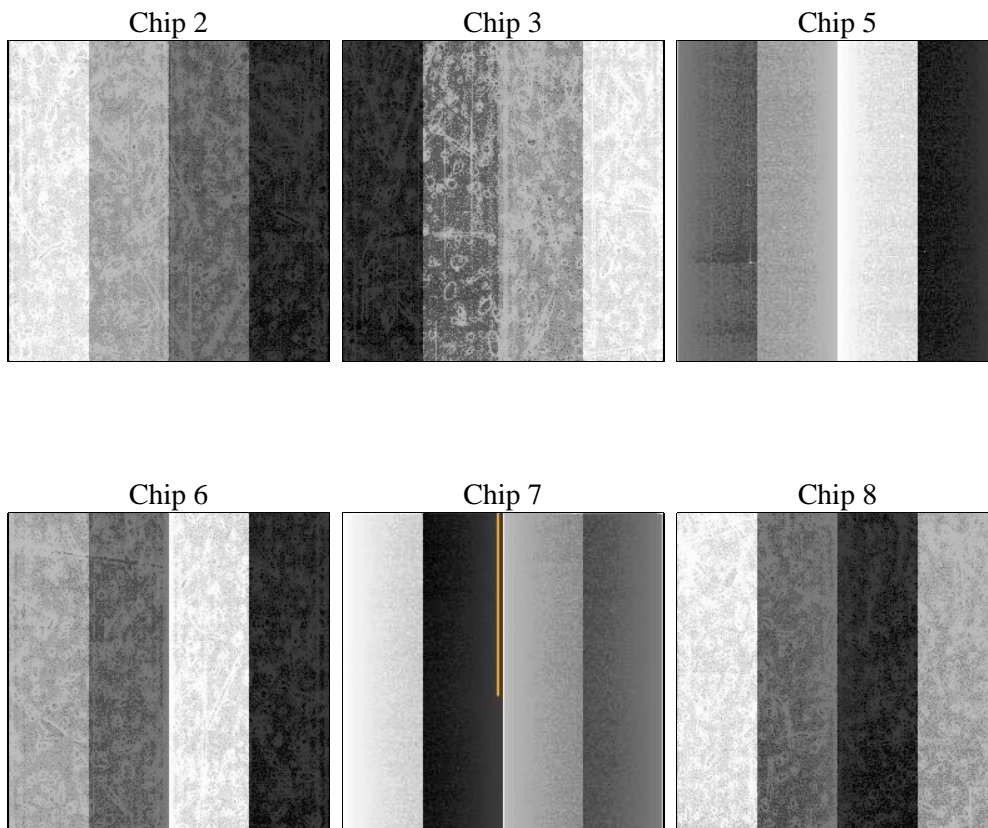
2 OBI

2.1 OBI

2.1.1 Images



2.1.2 Bias



2.1.3 Parameters

obi_num	0	Obi number	sched_exp_time	23789.977000	[s] Scheduled observation exposure time
ascdsver	10.2.4	Processing system revision	ontime	23750.399911582	Sum of GTIs [s]
caldbver	4.6.3	 	ontime2	23750.399911582	Sum of GTIs [s]
date	2014-10-05T23:33:49	Date and time of file creation	ontime3	23747.15886116	Sum of GTIs [s]
revision	1	Processing version of data	ontime5	23750.399911582	Sum of GTIs [s]
			ontime6	23750.399911582	Sum of GTIs [s]
			ontime7	23750.399911582	Sum of GTIs [s]
			ontime8	23747.159000635	Sum of GTIs [s]
			l1events	861401	Number of level 1 events

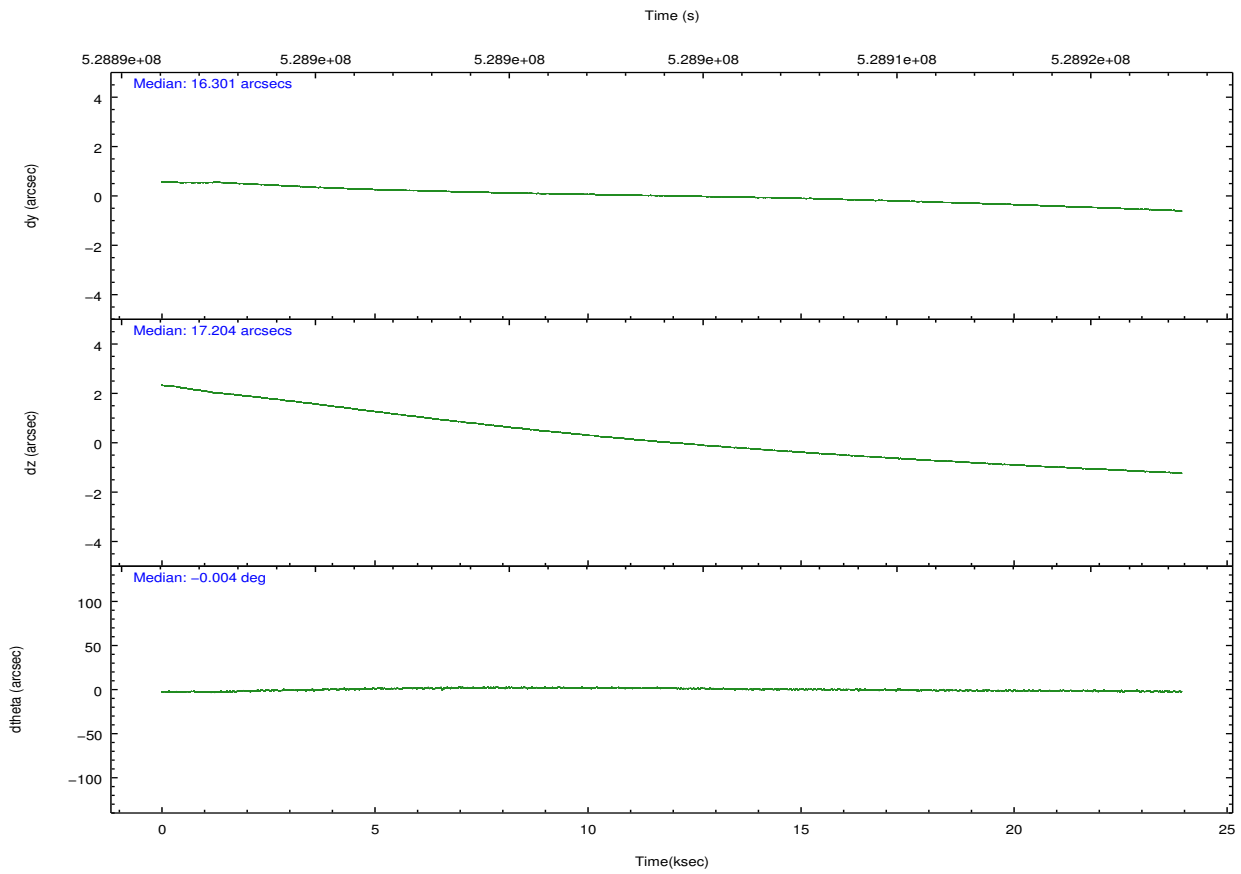
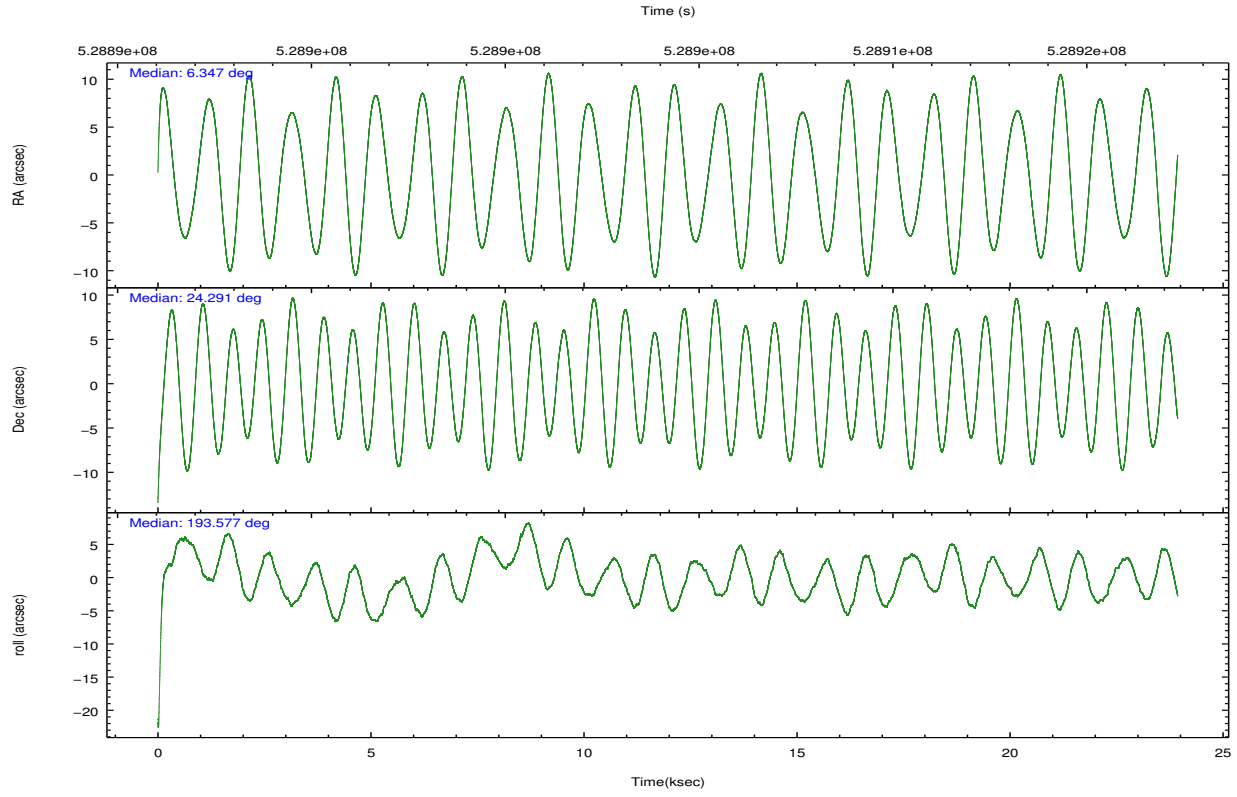
2.1.4 Events

	ccd 2	ccd 3	ccd 5	ccd 6	ccd 7	ccd 8		ccd 2	ccd 3	ccd 5	ccd 6	ccd 7	ccd 8
level 1 events	117979	107673	209787	114085	157604	154273	grade 0 events	4958	4794	18098	4620	6080	12012
rejected events	104131	94619	106603	100363	88932	113189		4%	4%	8%	4%	3%	7%
rejected %	88%	87%	50%	87%	56%	73%	grade 1 events	74	65	412	66	189	132
								0%	0%	0%	0%	0%	0%
							grade 2 events	3428	2814	28814	3079	14252	9452
								2%	2%	13%	2%	9%	6%
							grade 3 events	1410	1402	3309	1403	5864	4493
								1%	1%	1%	1%	3%	2%
							grade 4 events	1371	1367	2949	1364	5829	4304
								1%	1%	1%	1%	3%	2%
							grade 5 events	5134	5971	14286	5935	16135	8646
								4%	5%	6%	5%	10%	5%
							grade 6 events	2686	2681	50044	3259	36660	10850
								2%	2%	23%	2%	23%	7%
							grade 7 events	98918	88579	91875	94359	72595	104384
								83%	82%	43%	82%	46%	67%

2.2 Compared Parameters

Parameter	Planned	Actual	Parameter	Planned	Actual
Instrument	ACIS	ACIS	Obspar format version number	7	7
Detector	ACIS-235678	ACIS-235678	Obspar file type	PREDICTED	ACTUAL
Grating	NONE	NONE	Obspar update status	NONE	UPDATED
Data mode	VFAINT	VFAINT	CCD I0 on	N	N
Observation mode	POINTING	POINTING	CCD I1 on	N	N
[deg] Pointing RA	6.368087	6.346537482263821	CCD I2 on	O1	Y
[deg] Pointing Dec	24.310420	24.29124126762416	CCD I3 on	O2	Y
[deg] Pointing Roll	193.411874	193.5773619205621	CCD S0 on	N	N
[mm] SIM focus pos	-0.684267	-0.6828225247311905	CCD S1 on	Y	Y
[mm] SIM defocus	0	0.001444936568705701	CCD S2 on	Y	Y
[mm] SIM translation stage pos	-190.132523	-190.1425803651734	CCD S3 on	Y	Y
[mm] SIM translation stage offset	0	0.01005778216563158	CCD S4 on	Y	Y
[s] Observation start time (MET)	528892368.184000	528891028.89329	CCD S5 on	N	N
Observation start date	2014-10-05T10:31:41	2014-10-05T10:10:28	Number of optional ACIS chips dropped	0	0
[s] Observation end time (MET)	528916158.184000	528916384.3197	On-chip summing requested	N	N
Observation end date	2014-10-05T17:08:11	2014-10-05T17:13:04	Subarray requested	NONE	NONE
Read mode	TIMED	TIMED	Alternating exposures requested	N	N
			[s] Primary exposure time	0.000000	3.2

2.3 Aspect

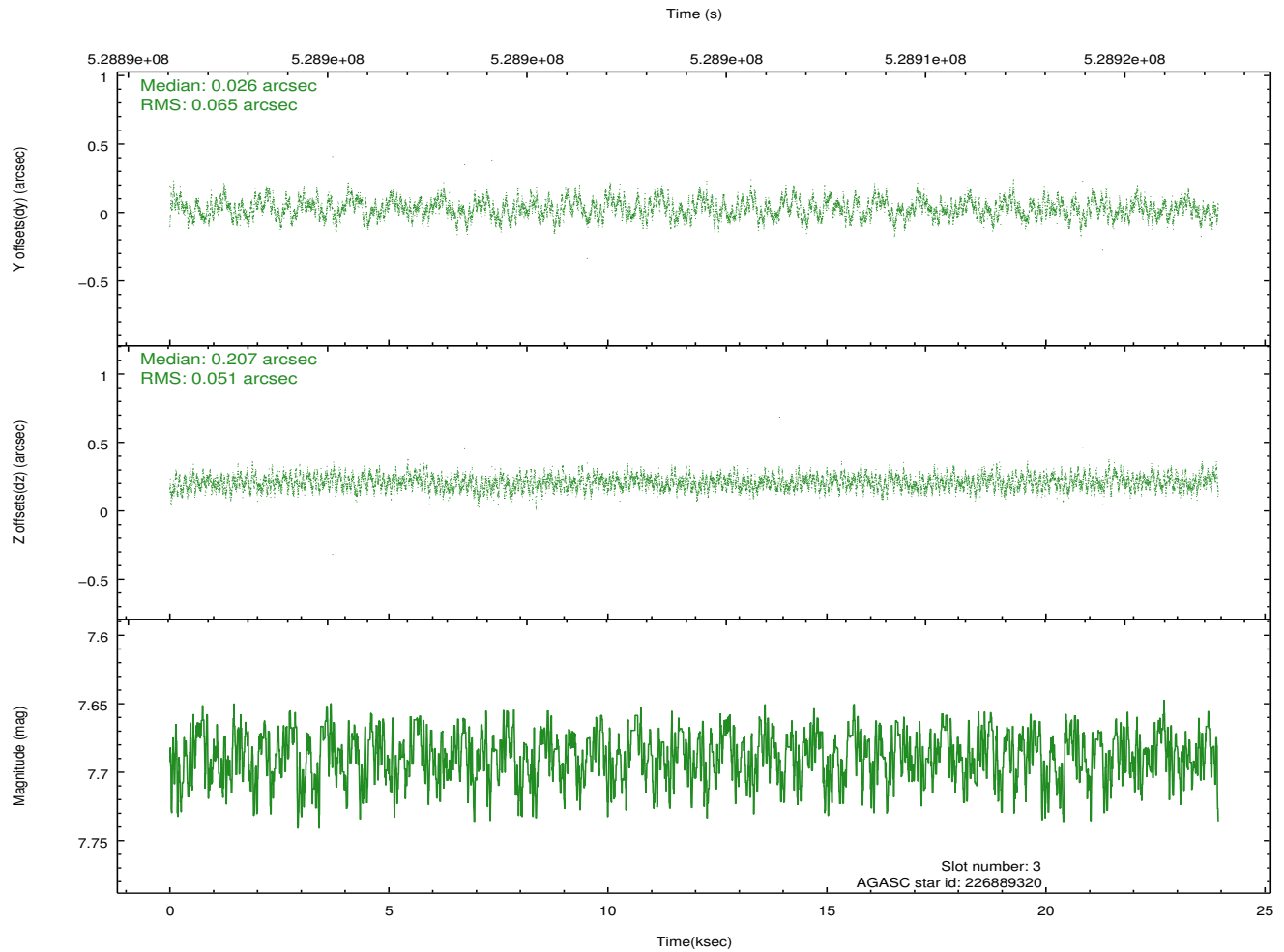
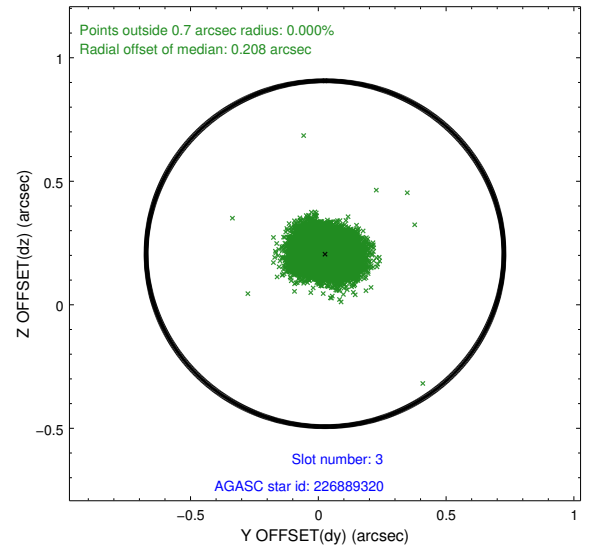
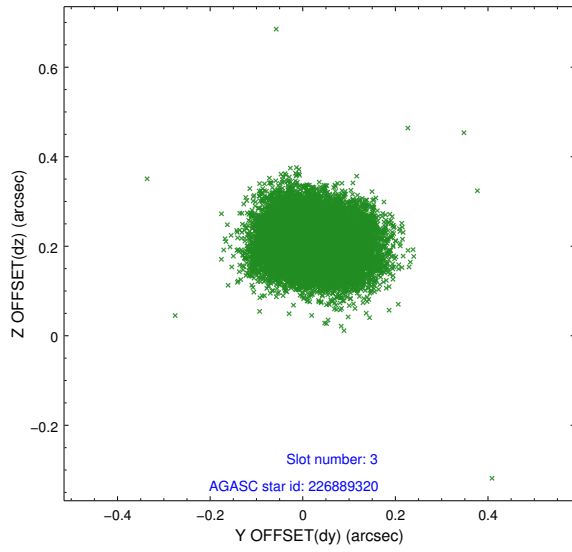


Slot Statistics

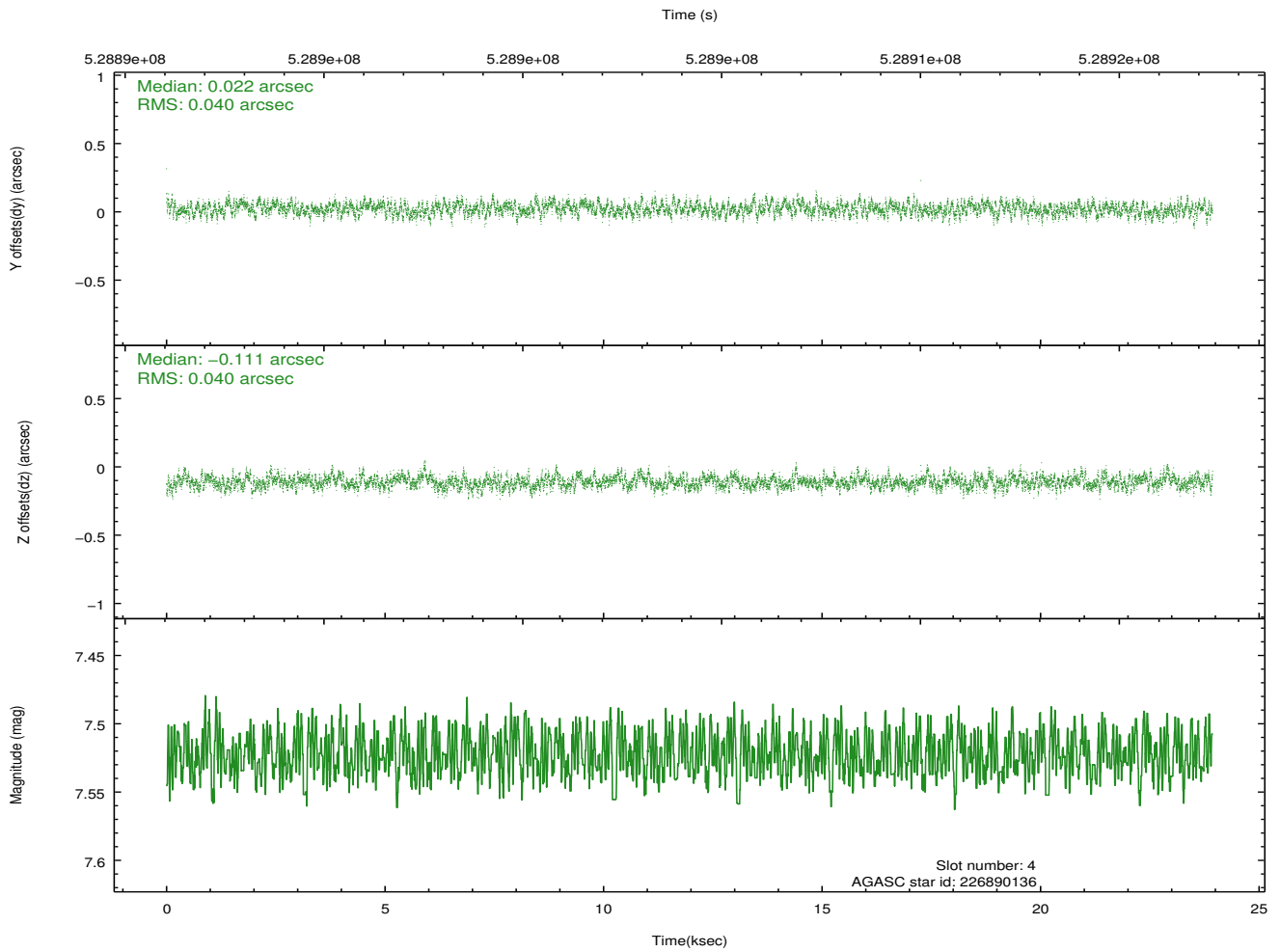
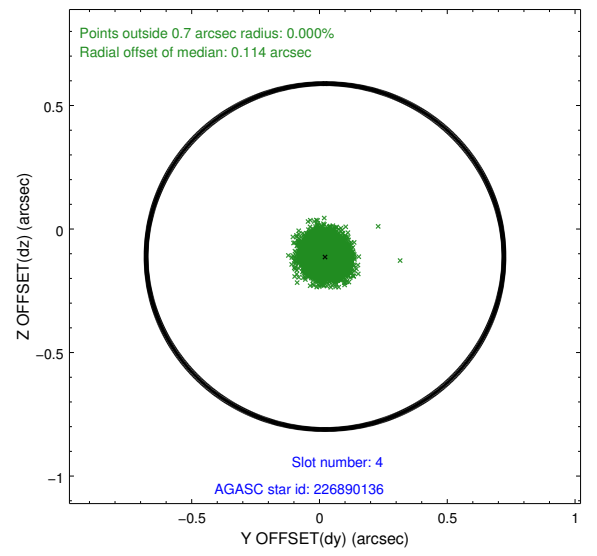
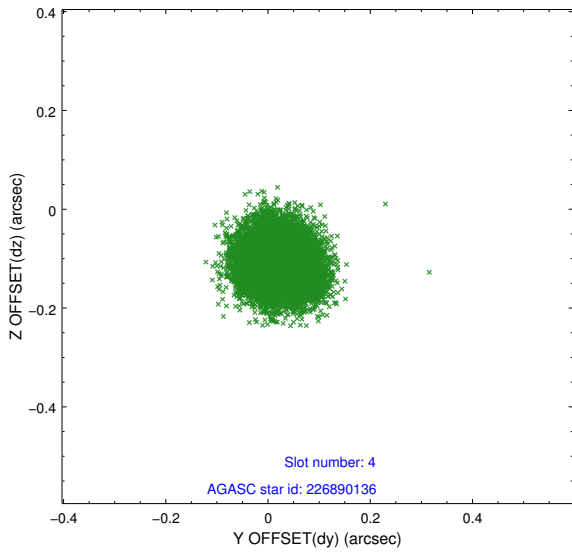
slot	status	id	mag	n_pts	med_dy	med_dz	dr1	dr2	ra	dec	mean_y	mean_z
0	FID	ACIS-S-2	6.96	5837	-0.098	-0.013	0.019	0.025	0.000000	0.000000	-769.41	-1738.81
1	FID	ACIS-S-4	7.05	5838	0.201	0.051	0.012	0.021	0.000000	0.000000	2144.12	169.57
2	FID	ACIS-S-5	7.08	5838	-0.136	-0.028	0.017	0.024	0.000000	0.000000	-1822.11	163.35
3	GUIDE	226889320	7.69	11676	0.026	0.207	0.089	0.138	6.716953	24.630274	-1377.36	-856.11
4	GUIDE	226890136	7.52	11677	0.022	-0.111	0.061	0.095	6.591703	24.734950	-1065.25	-1317.25
5	GUIDE	226894808	8.05	11675	-0.131	0.020	0.093	0.161	5.676972	24.568976	1984.18	-1434.85
6	GUIDE	227291384	6.86	11677	-0.030	-0.090	0.069	0.112	6.769057	25.042065	-1884.30	-2259.93
7	GUIDE	226755864	8.19	11674	0.114	-0.029	0.092	0.161	5.571047	24.679403	2226.81	-1903.84

2.4 Star Slots

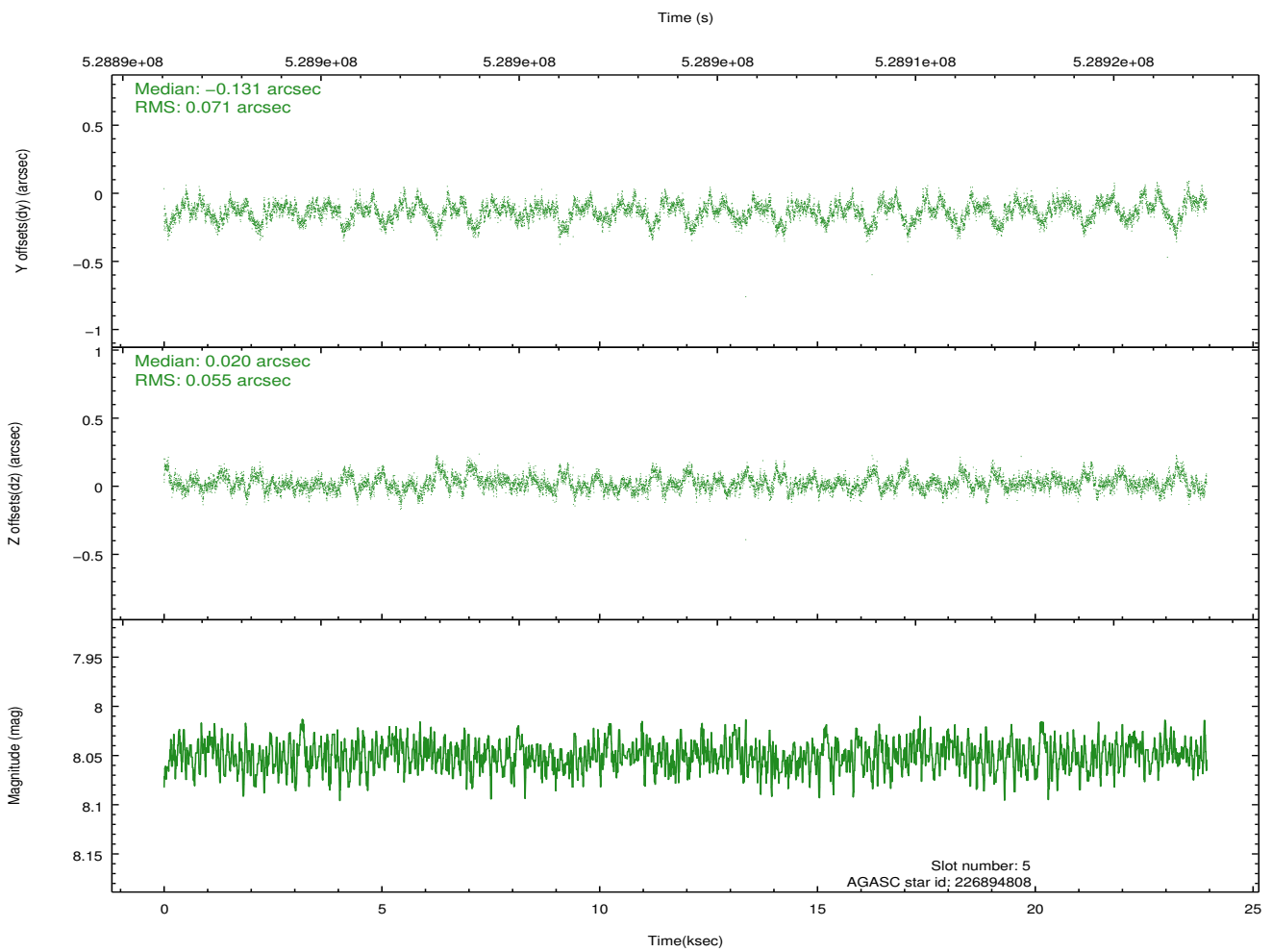
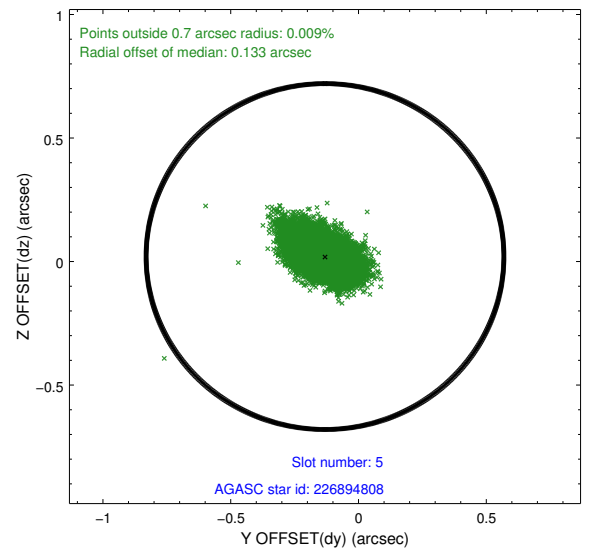
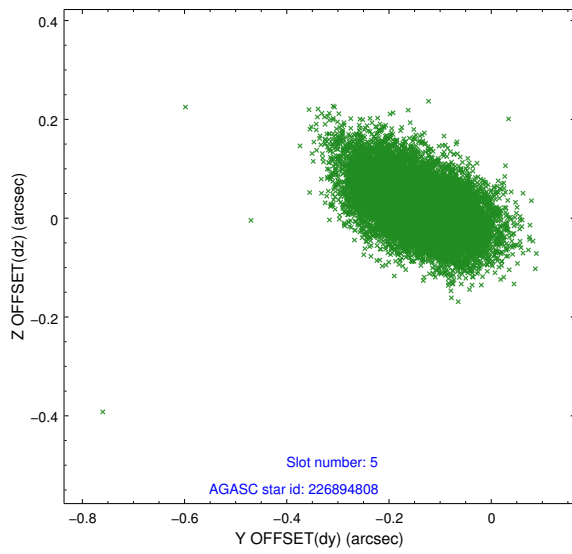
2.4.1 Slot 3



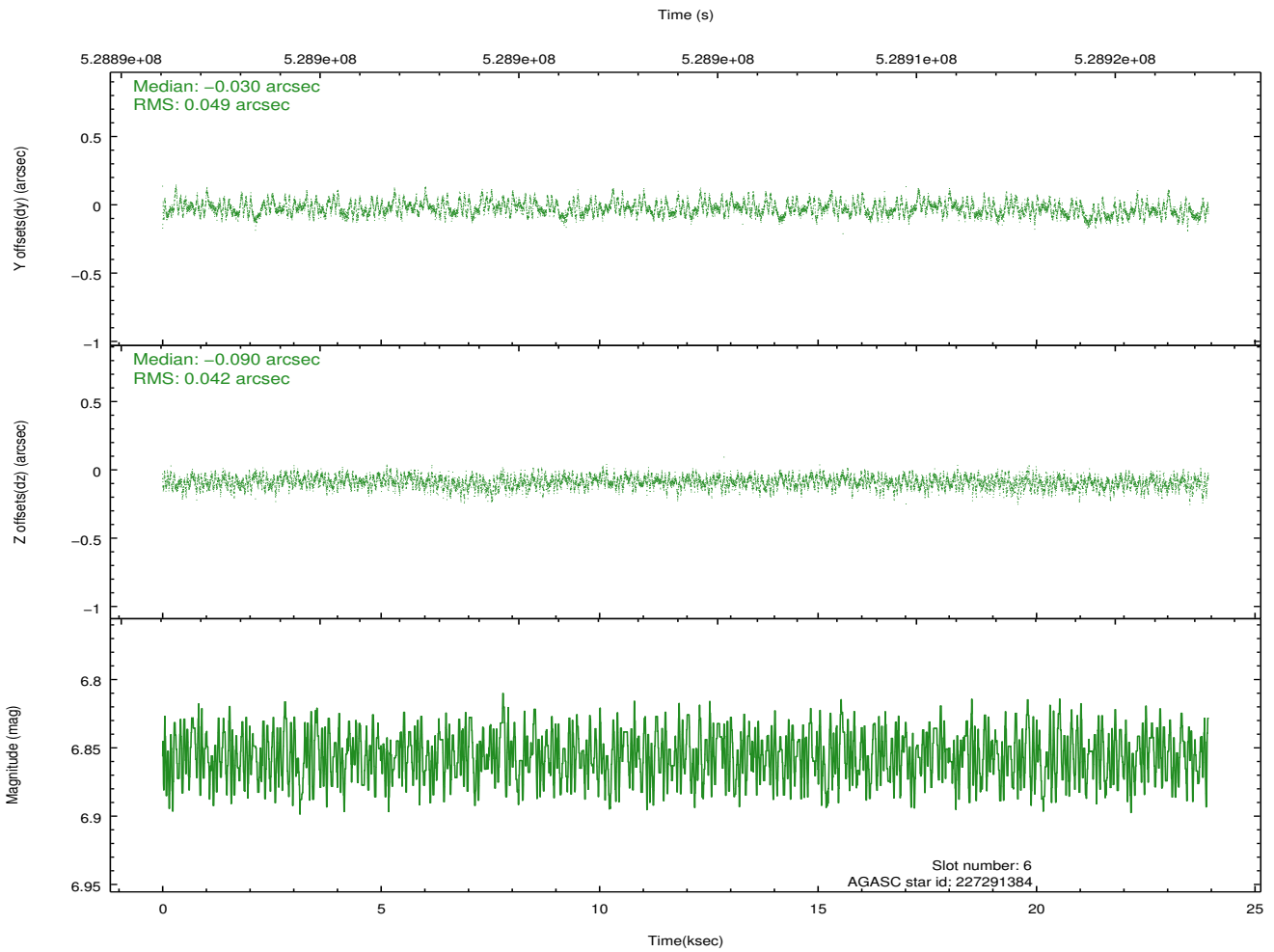
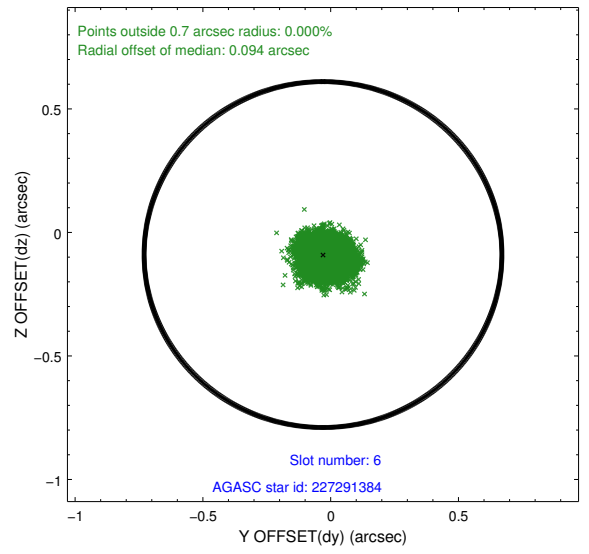
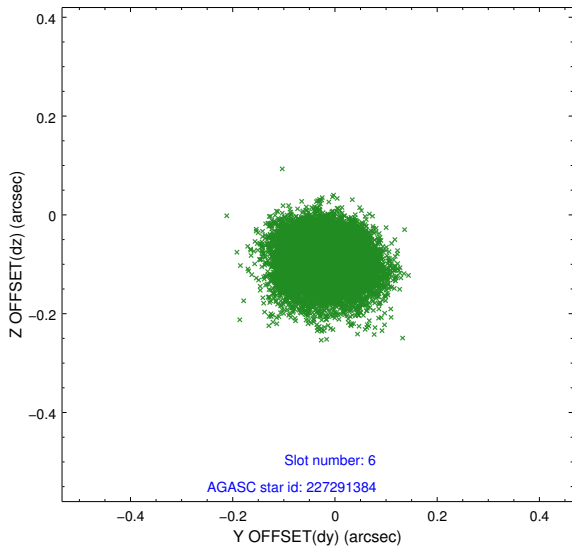
2.4.2 Slot 4



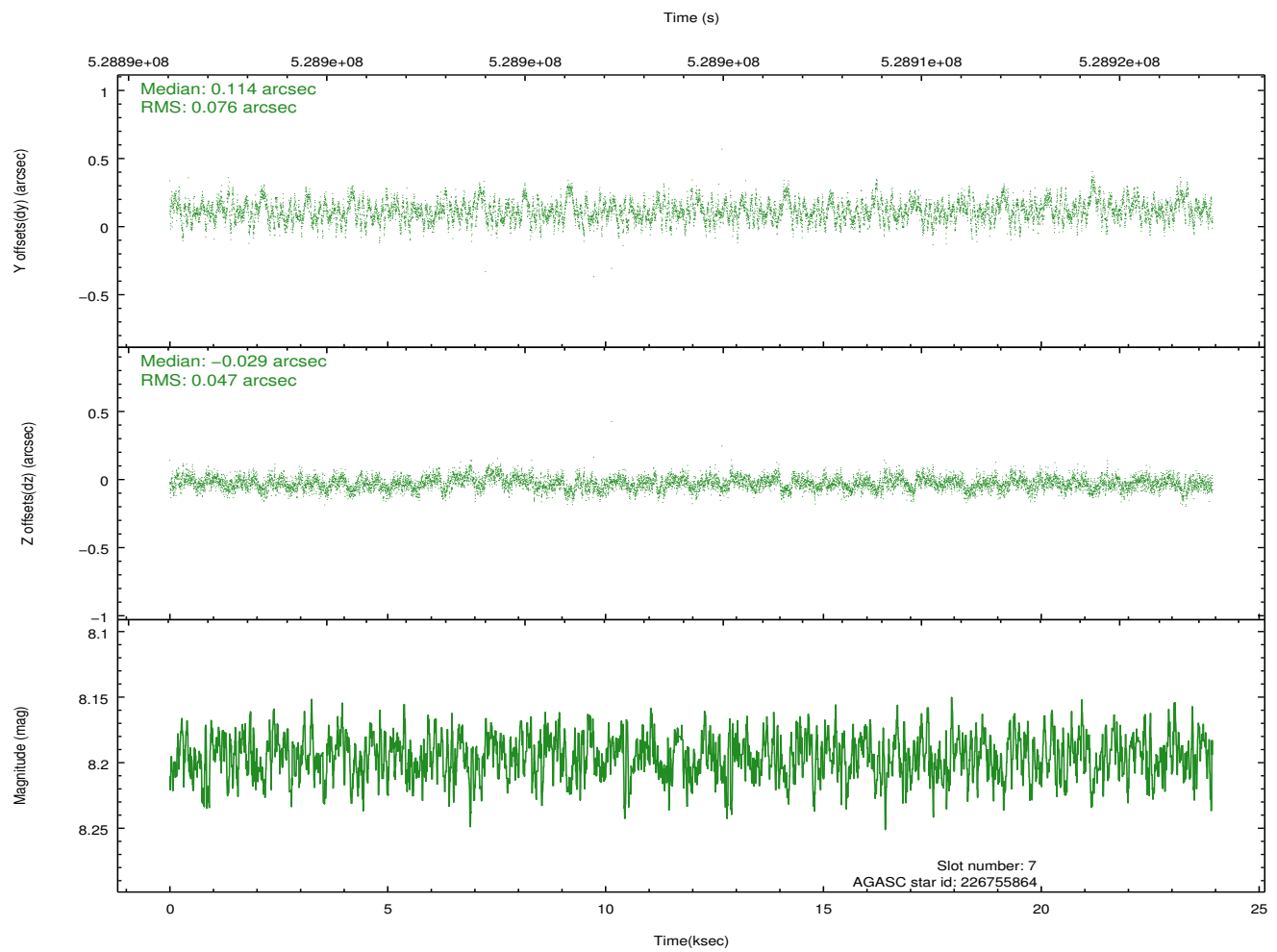
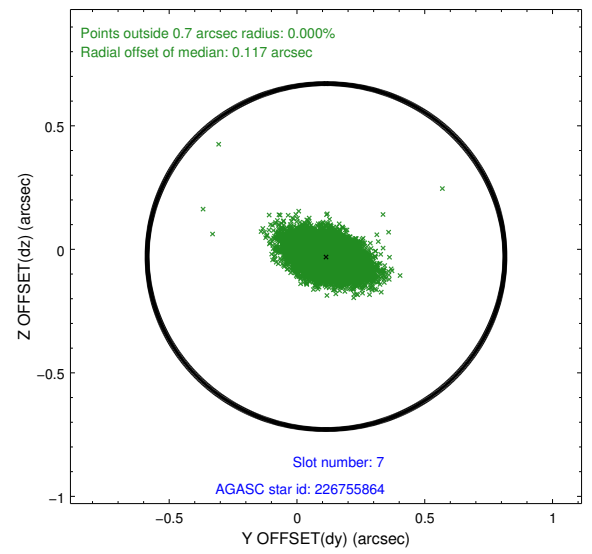
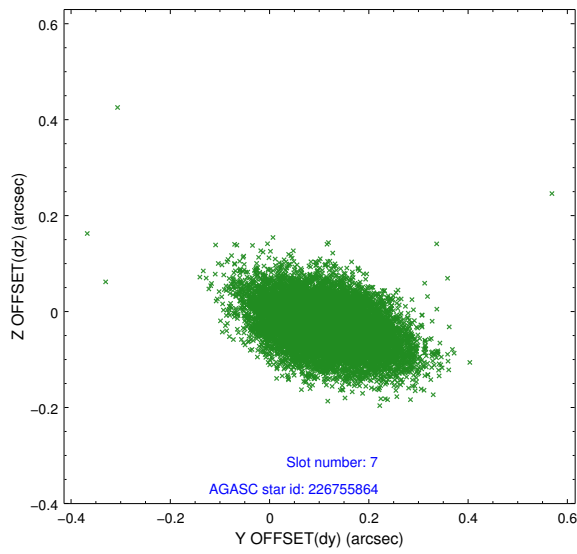
2.4.3 Slot 5



2.4.4 Slot 6

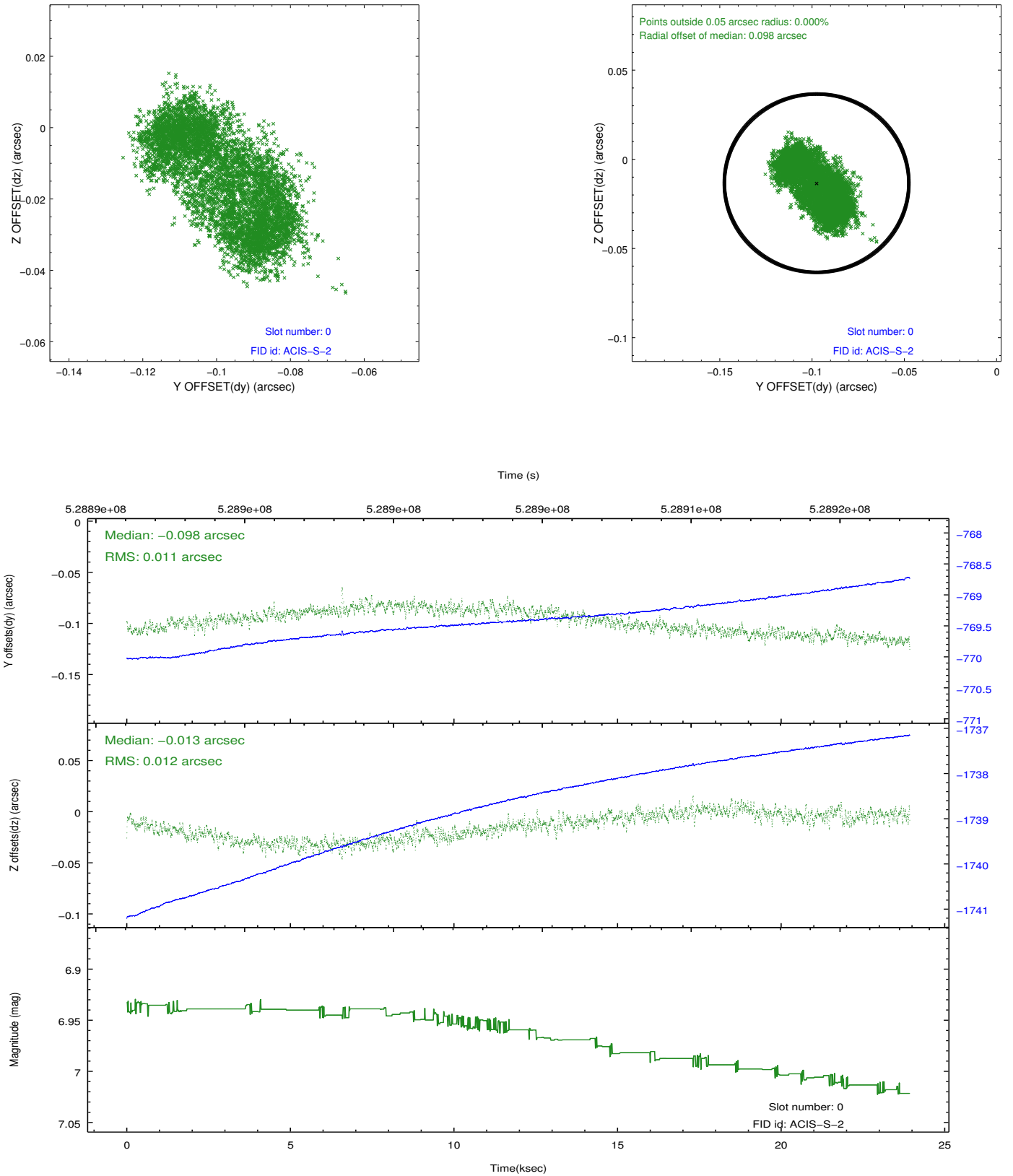


2.4.5 Slot 7

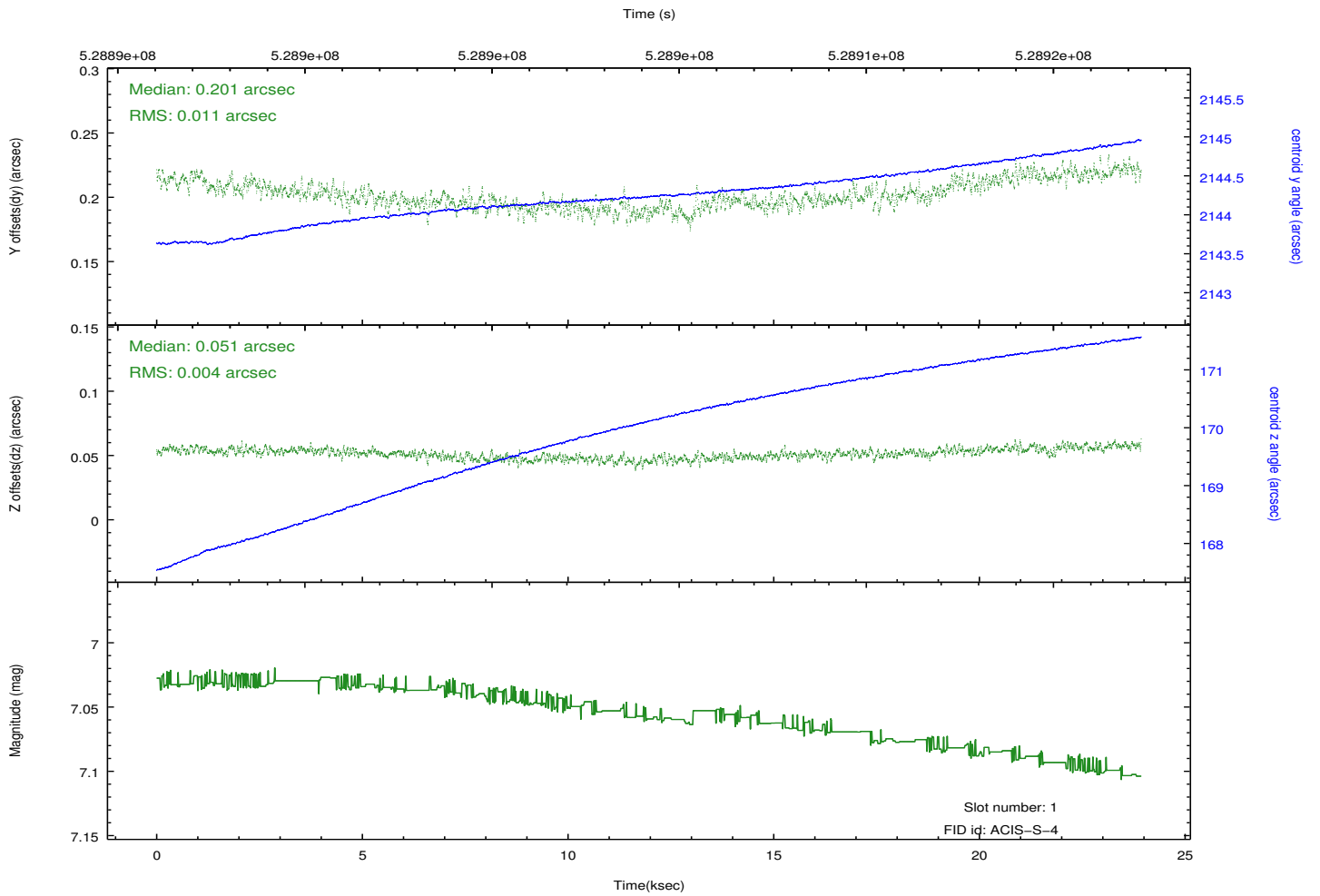
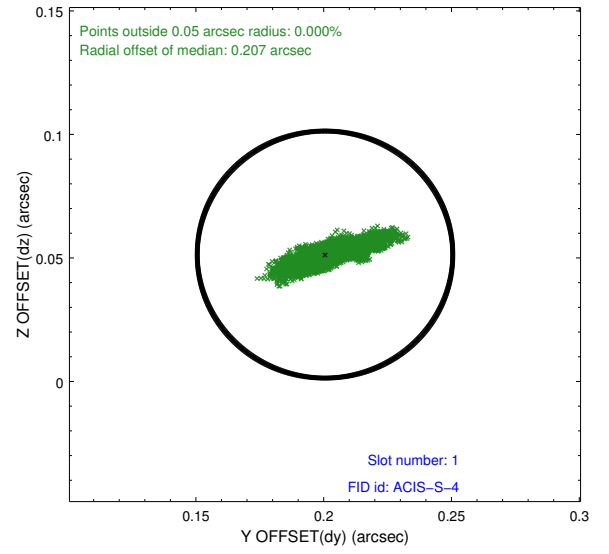
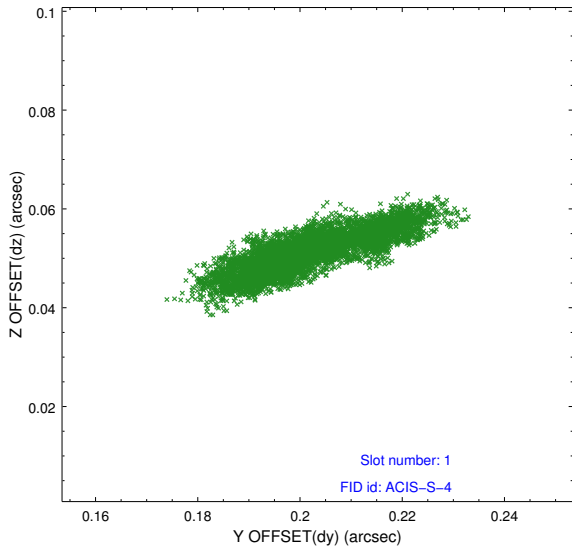


2.5 FID Slots

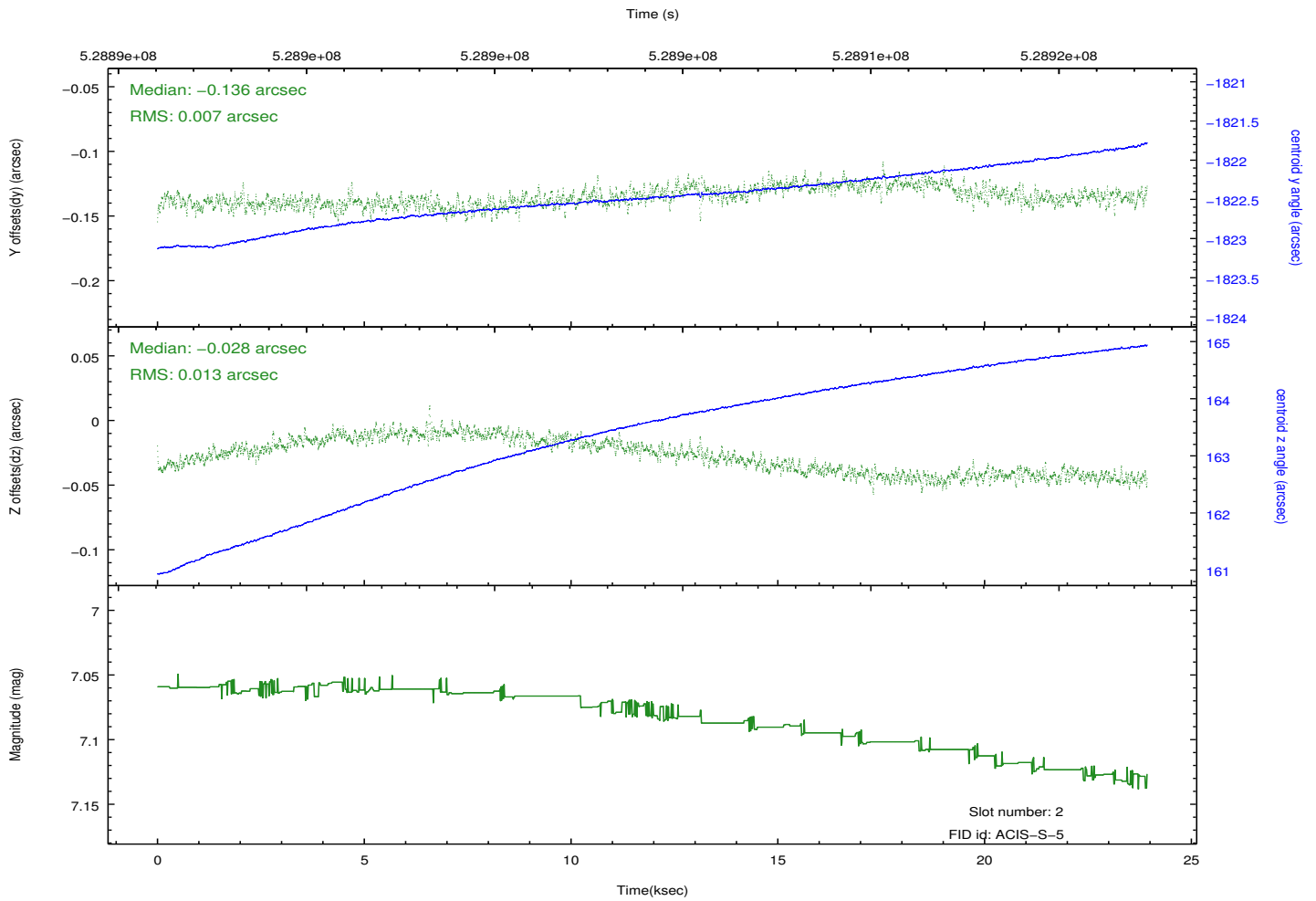
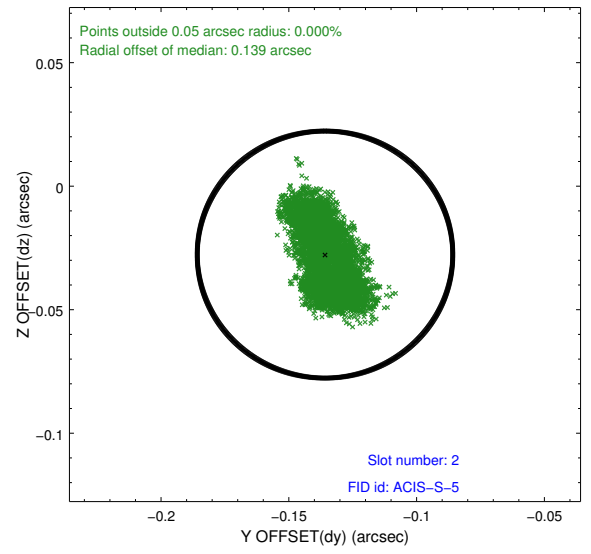
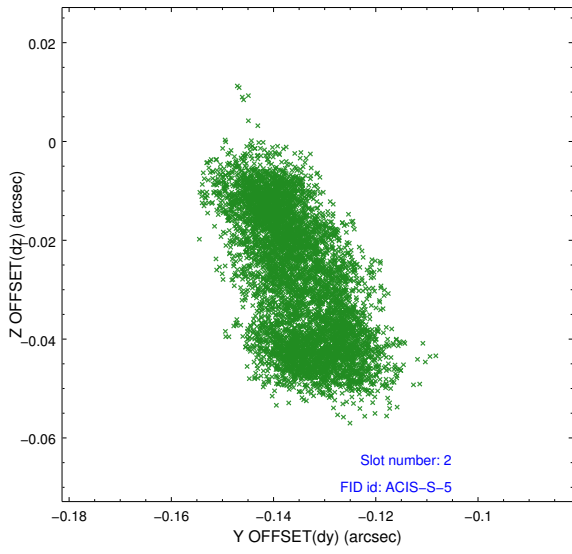
2.5.1 Slot 0



2.5.2 Slot 1



2.5.3 Slot 2



A Summary

A.1 Status

V&V Scientist	Joy Nichols
V&V Date (YYYY-MM-DD)	2014.10.10
V&V Edition	2
V&V Disposition and Status	OK
V&V Charge Time	23.750399911582

A.2 Comments

The observer reports that sources in the field have unusually large and asymmetric PSFs. There is no indication of an aspect problem so this obsid was not sent for Aspect Review when it was first processed. But Belinda is inquiring about the presumably large PSFs, so it's probably worth a formal Aspect Review.

Software status was OK.

This is the second V&V report for this obsid. It was created to formally document the quality of the aspect solution.