

V&V Reference Report

L2 ASCDS Version : 10.2.4

Observation 16007 - L2 Version 1
Chandra X-Ray Center

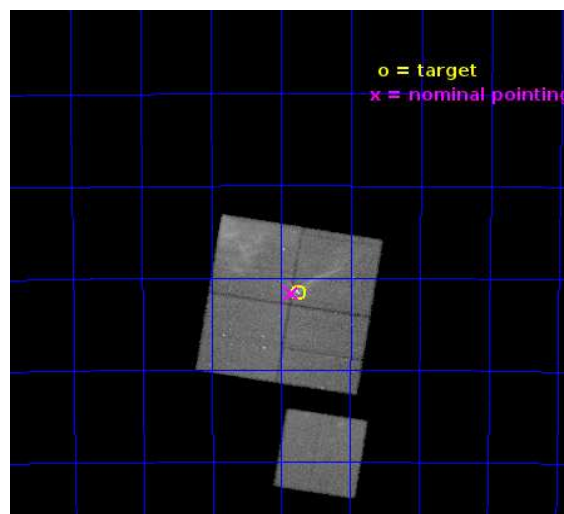
L2 Processing Date : Aug 29 2014

Contents

1	Front	2
2	OBI	3
2.1	OBI	3
2.1.1	Images	3
2.1.2	Bias	3
2.1.3	Parameters	4
2.1.4	Events	4
2.2	Compared Parameters	5
2.3	Aspect	6
2.4	Star Slots	9
2.4.1	Slot 3	9
2.4.2	Slot 4	10
2.4.3	Slot 5	11
2.4.4	Slot 6	12
2.4.5	Slot 7	13
2.5	FID Slots	14
2.5.1	Slot 0	14
2.5.2	Slot 1	15
2.5.3	Slot 2	16
A	Summary	17
A.1	Status	17
A.2	Comments	17

1 Front

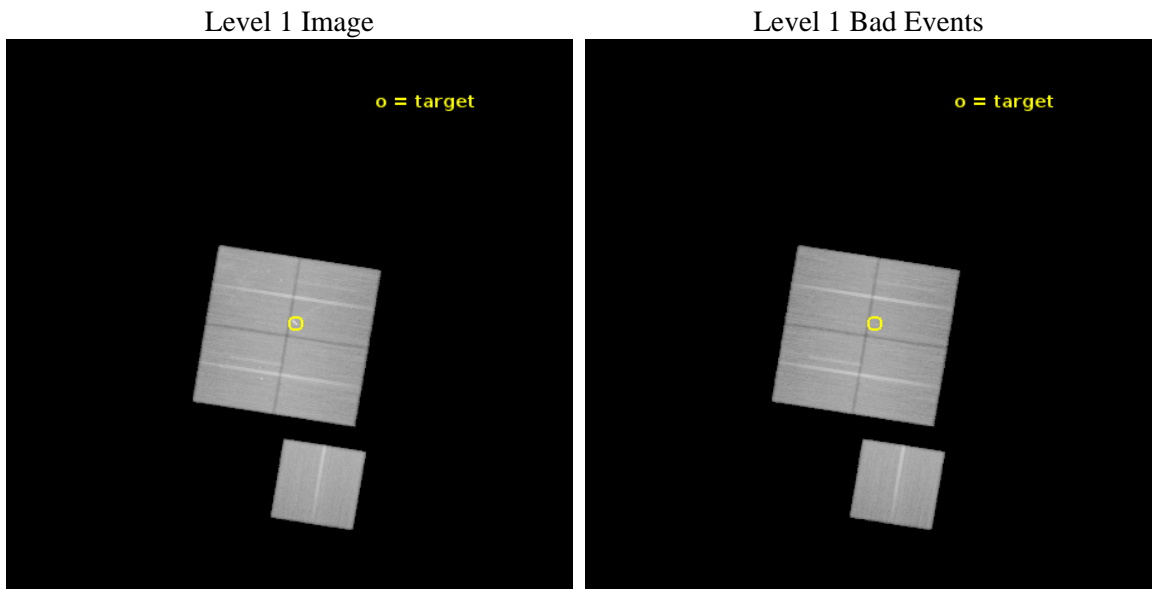
seq_num	502240	Sequence number
obs_id	16007	Observation id
title	DEEP STUDY OF THE 20PC-LONG PRECESSING JET IN IGR J11014-6103	Prop
observer	Dr Lucia Pavan	Principal investigator
object	IGR J11014-6103	Source name
dtcycle	0	
cycle	P	events from which exps? Prim/Second/Both
ra_targ	165.4375	Observer's specified target RA [deg]
dec_targ	-61.027667	Observer's specified target Dec [deg]
ra_nom	165.46316639448	Nominal RA [deg]
dec_nom	-61.028197624706	Nominal Dec [deg]
roll_nom	189.23113838614	Nominal Roll [deg]
revision	1	Processing version of data
ontime	117584.99355751	Sum of GTIs [s]
livetime	116048.65905187	Livetime [s]
ontime0	117584.99355751	Sum of GTIs [s]
ontime1	117581.89362723	Sum of GTIs [s]
ontime2	117581.93468732	Sum of GTIs [s]
ontime3	117591.39860845	Sum of GTIs [s]
ontime6	117594.37545854	Sum of GTIs [s]
l2events	378732	Number of level 2 events



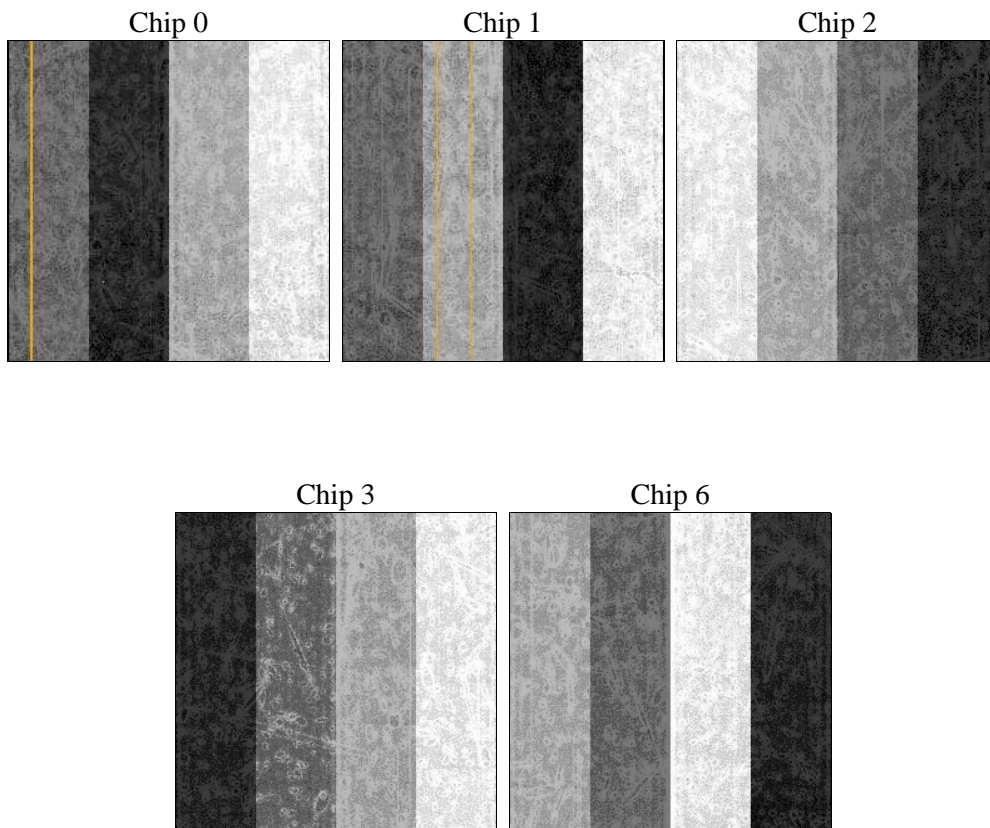
2 OBI

2.1 OBI

2.1.1 Images



2.1.2 Bias



2.1.3 Parameters

obi_num	0	Obi number	sched_exp_time	117510.000000	[s] Scheduled observation exposure time
ascdsver	10.2.4	Processing system revision	ontime	117584.99355751	Sum of GTIs [s]
caldbver	4.6.2	 	ontime0	117584.99355751	Sum of GTIs [s]
date	2014-08-29T17:58:21	Date and time of file creation	ontime1	117581.89362723	Sum of GTIs [s]
revision	1	Processing version of data	ontime2	117581.93468732	Sum of GTIs [s]
			ontime3	117591.39860845	Sum of GTIs [s]
			ontime6	117594.37545854	Sum of GTIs [s]
			l1events	3005187	Number of level 1 events

2.1.4 Events

	ccd 0	ccd 1	ccd 2	ccd 3	ccd 6
level 1 events	577423	598989	619663	600701	608411
rejected events	481847	480887	544652	525282	532990
rejected %	83%	80%	87%	87%	87%

	ccd 0	ccd 1	ccd 2	ccd 3	ccd 6
grade 0 events	42928	59359	29090	30229	26762
	7%	9%	4%	5%	4%
grade 1 events	414	420	373	334	294
	0%	0%	0%	0%	0%
grade 2 events	20717	23166	17994	15986	16762
	3%	3%	2%	2%	2%
grade 3 events	8349	8877	7012	7245	7391
	1%	1%	1%	1%	1%
grade 4 events	7830	8652	7091	7326	7477
	1%	1%	1%	1%	1%
grade 5 events	28447	29683	26645	32386	31337
	4%	4%	4%	5%	5%
grade 6 events	15758	18053	13825	14633	17032
	2%	3%	2%	2%	2%
grade 7 events	452980	450779	517633	492562	501356
	78%	75%	83%	81%	82%

2.2 Compared Parameters

Parameter	Planned	Actual	Parameter	Planned	Actual
Instrument	ACIS	ACIS	Obspar format version number	7	7
Detector	ACIS-01236	ACIS-01236	Obspar file type	PREDICTED	ACTUAL
Grating	NONE	NONE	Obspar update status	NONE	UPDATED
Data mode	VFAINT	VFAINT	CCD I0 on	Y	Y
Observation mode	POINTING	POINTING	CCD I1 on	Y	Y
[deg] Pointing RA	165.507161	165.4631663944814	CCD I2 on	Y	Y
[deg] Pointing Dec	-61.010654	-61.02819762470577	CCD I3 on	Y	Y
[deg] Pointing Roll	189.060935	189.2311383861354	CCD S0 on	N	N
[mm] SIM focus pos	-0.782348	-0.7809083437167272	CCD S1 on	N	N
[mm] SIM defocus	0	0.001439871863259334	CCD S2 on	O1	Y
[mm] SIM translation stage pos	-239.592463	-239.5815621397477	CCD S3 on	N	N
[mm] SIM translation stage offset	6	5.98910913681803	CCD S4 on	N	N
[s] Observation start time (MET)	525585093.184000	525583880.04713	CCD S5 on	N	N
Observation start date	2014-08-28T03:50:26	2014-08-28T03:31:20	Number of optional ACIS chips dropped	0	0
[s] Observation end time (MET)	525702603.184000	525703902.42878	On-chip summing requested	N	N
Observation end date	2014-08-29T12:28:56	2014-08-29T12:51:42	Subarray requested	NONE	NONE
Read mode	TIMED	TIMED	Alternating exposures requested	N	N
			[s] Primary exposure time	0.000000	3.1

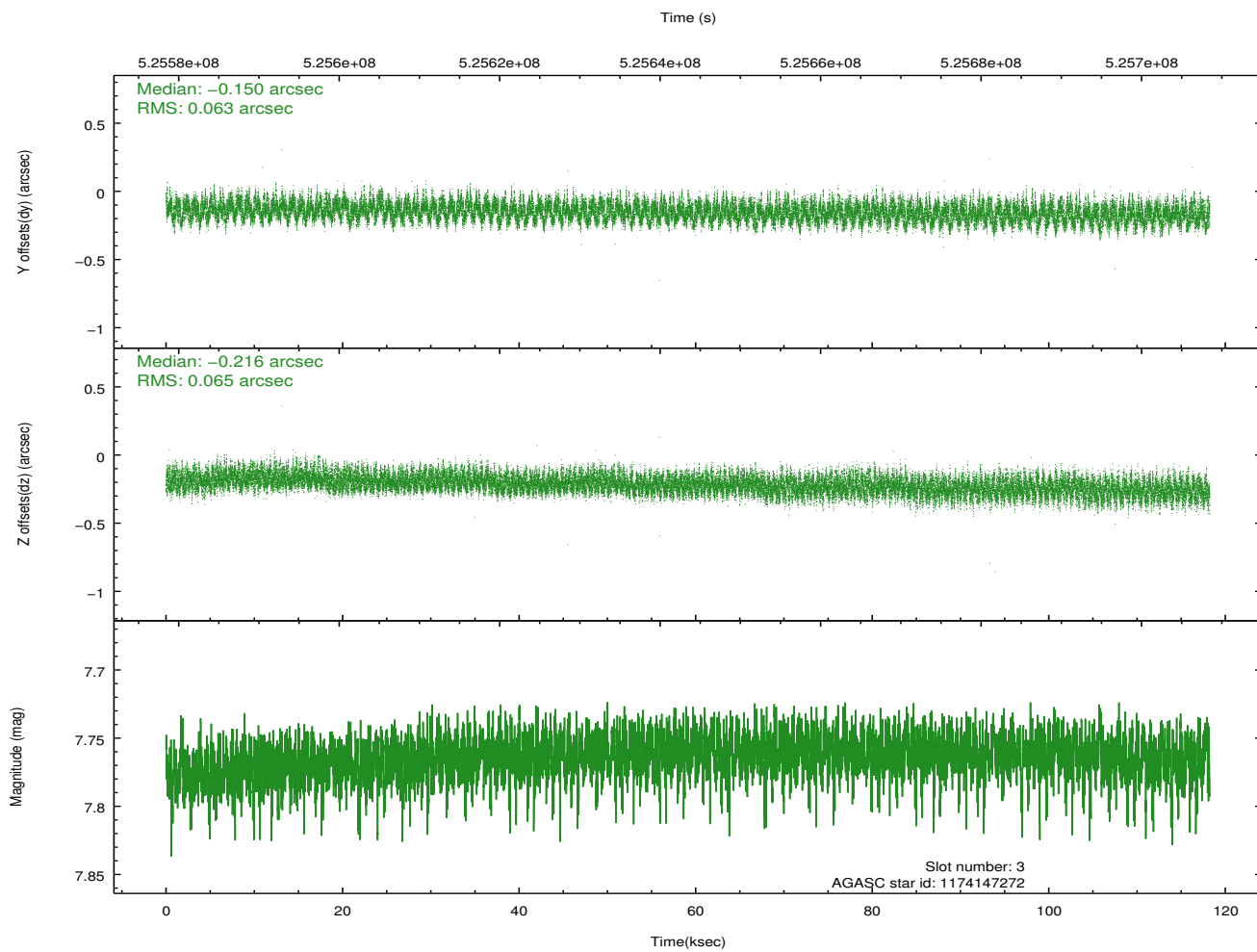
2.3 Aspect

Slot Statistics

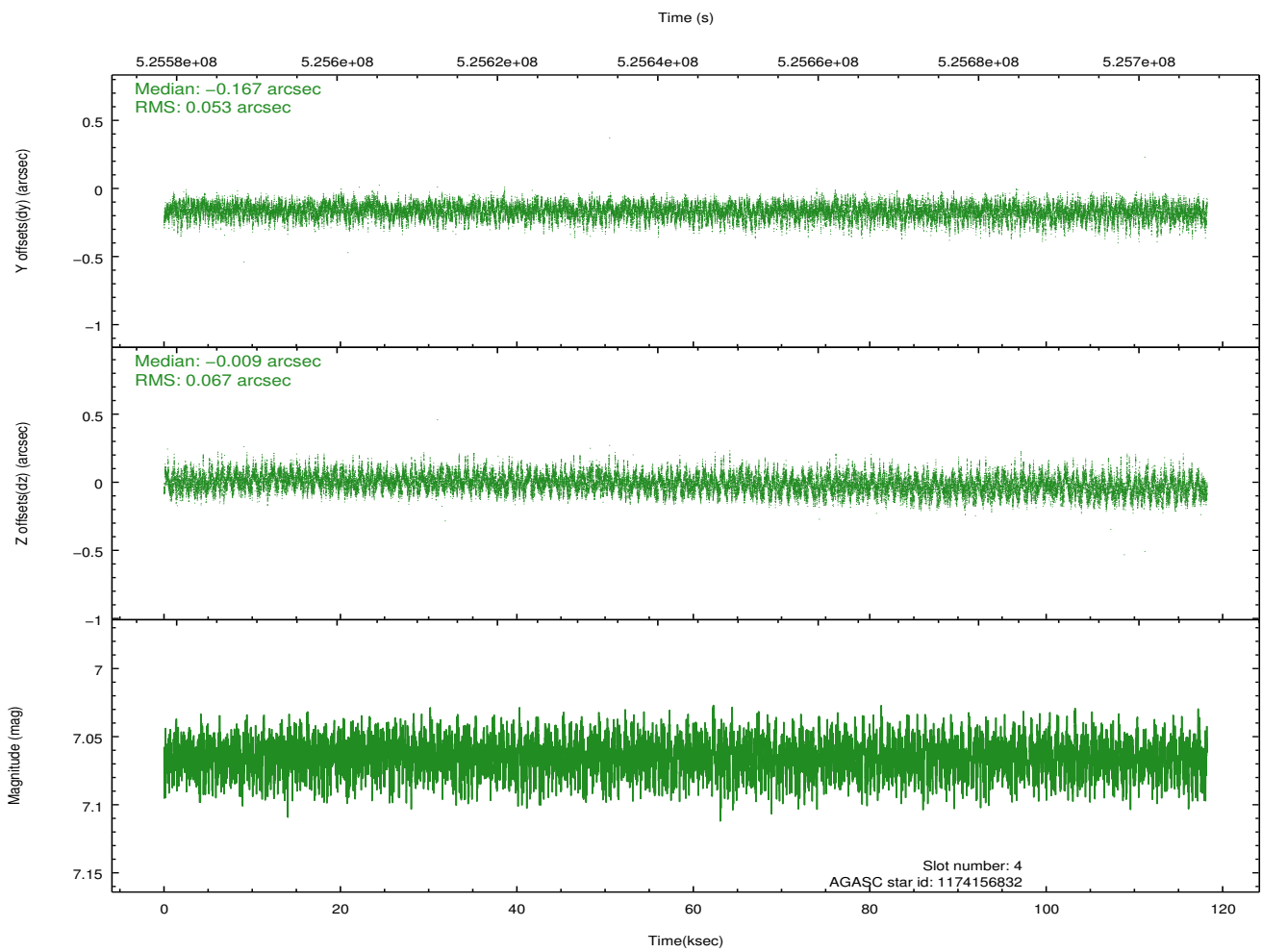
slot	status	id	mag	n_pts	med_dy	med_dz	dr1	dr2	ra	dec	mean_y	mean_z
0	FID	ACIS-I-1	7.11	28839	-0.090	0.151	0.064	0.084	0.000000	0.000000	915.08	-722.71
1	FID	ACIS-I-4	7.06	28837	0.329	-0.036	0.045	0.065	0.000000	0.000000	2135.81	1176.23
2	FID	ACIS-I-5	7.06	28840	-0.336	-0.044	0.028	0.045	0.000000	0.000000	-1833.30	1174.69
3	GUIDE	1174147272	7.76	57664	-0.150	-0.216	0.098	0.152	165.413771	-61.562087	470.54	1935.30
4	GUIDE	1174156832	7.06	57674	-0.167	-0.009	0.092	0.147	166.121036	-61.488309	-770.05	1869.35
5	GUIDE	1174174824	7.34	57666	-0.080	0.022	0.068	0.110	164.692322	-60.862830	1328.20	-741.30
6	GUIDE	1174174944	8.16	57657	0.244	-0.116	0.110	0.195	164.048245	-60.453559	2247.00	-2359.71
7	GUIDE	1174171768	8.77	57651	0.159	0.320	0.097	0.164	166.839003	-60.963190	-2320.83	221.24

2.4 Star Slots

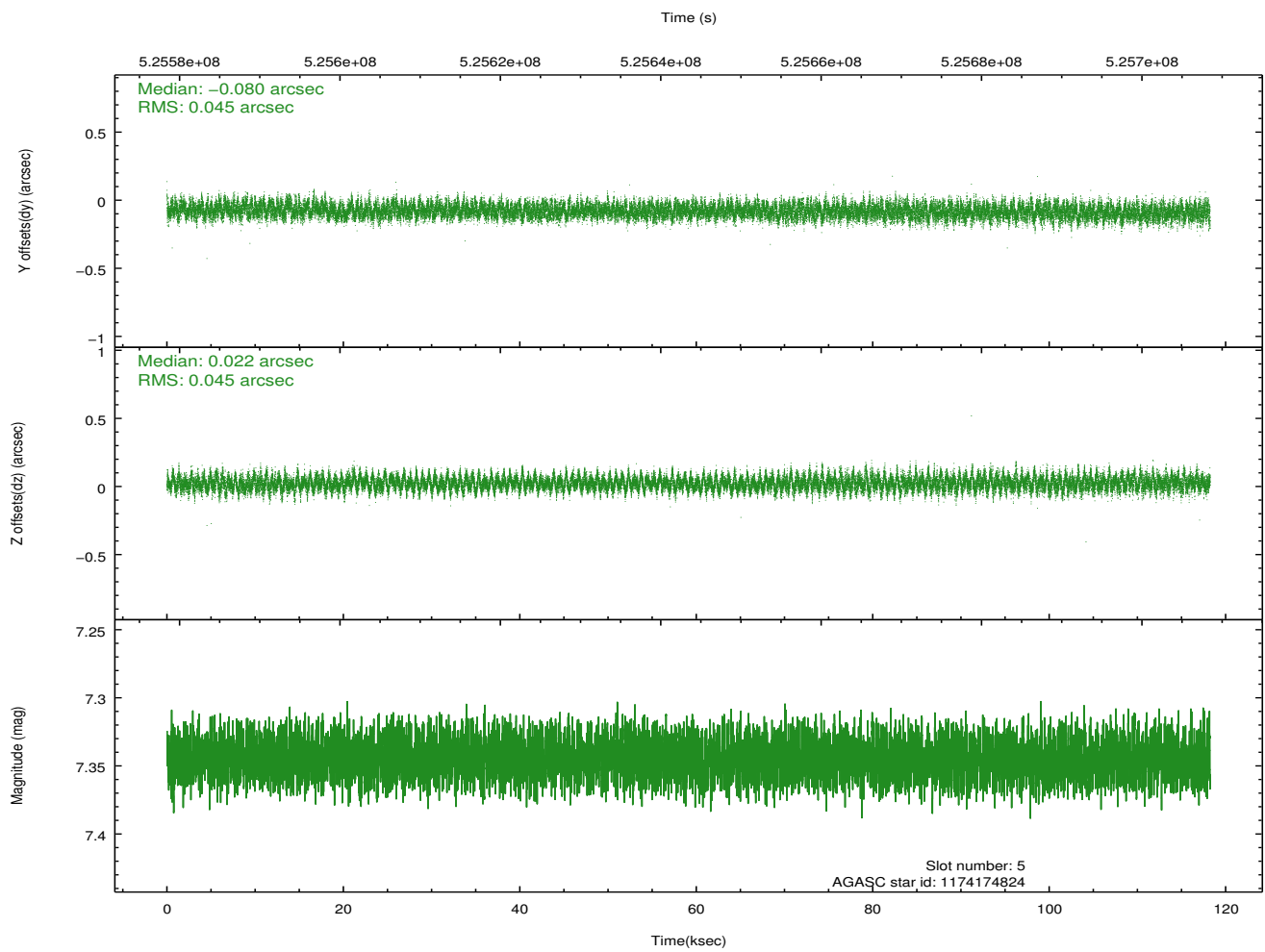
2.4.1 Slot 3



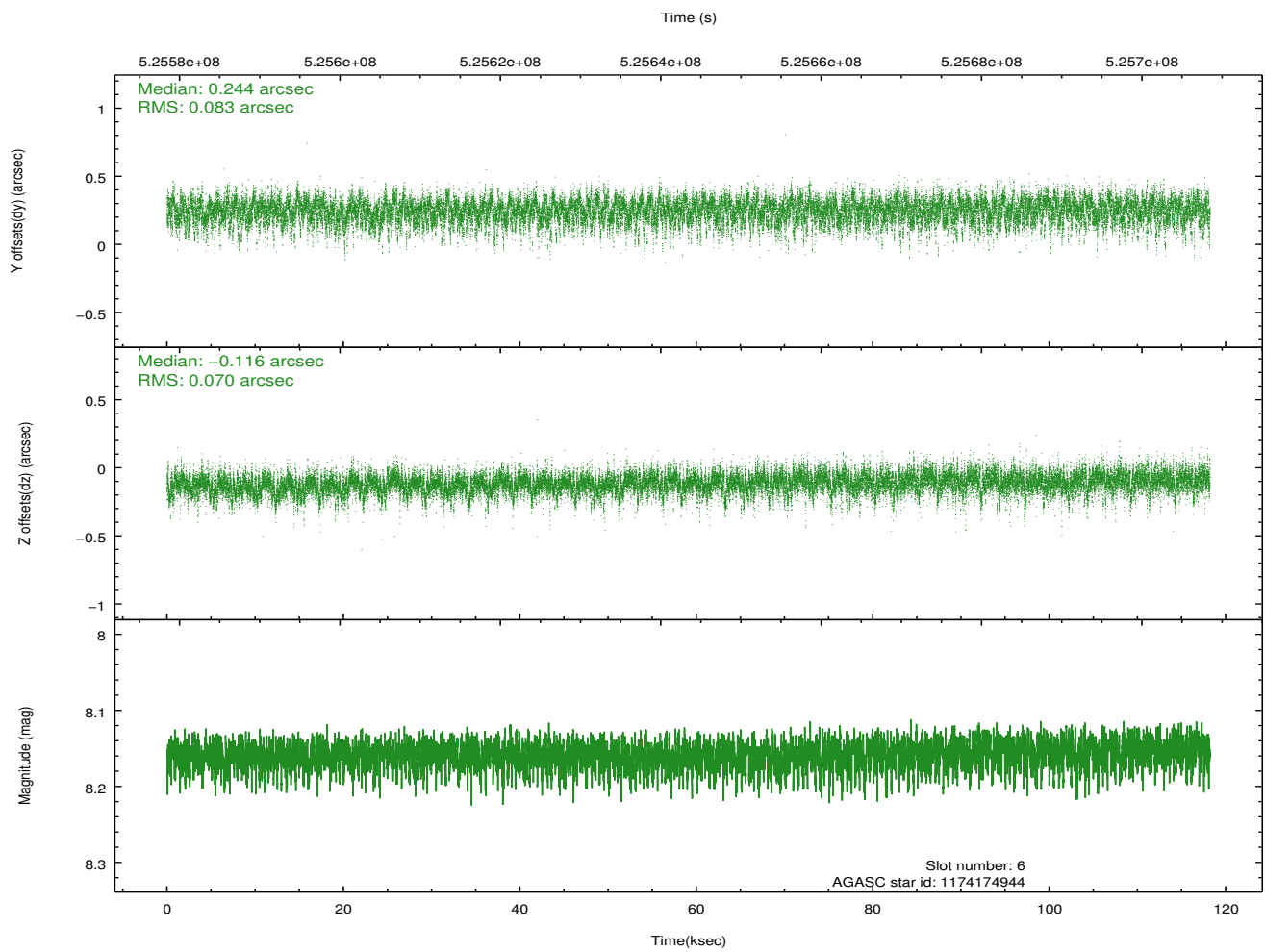
2.4.2 Slot 4



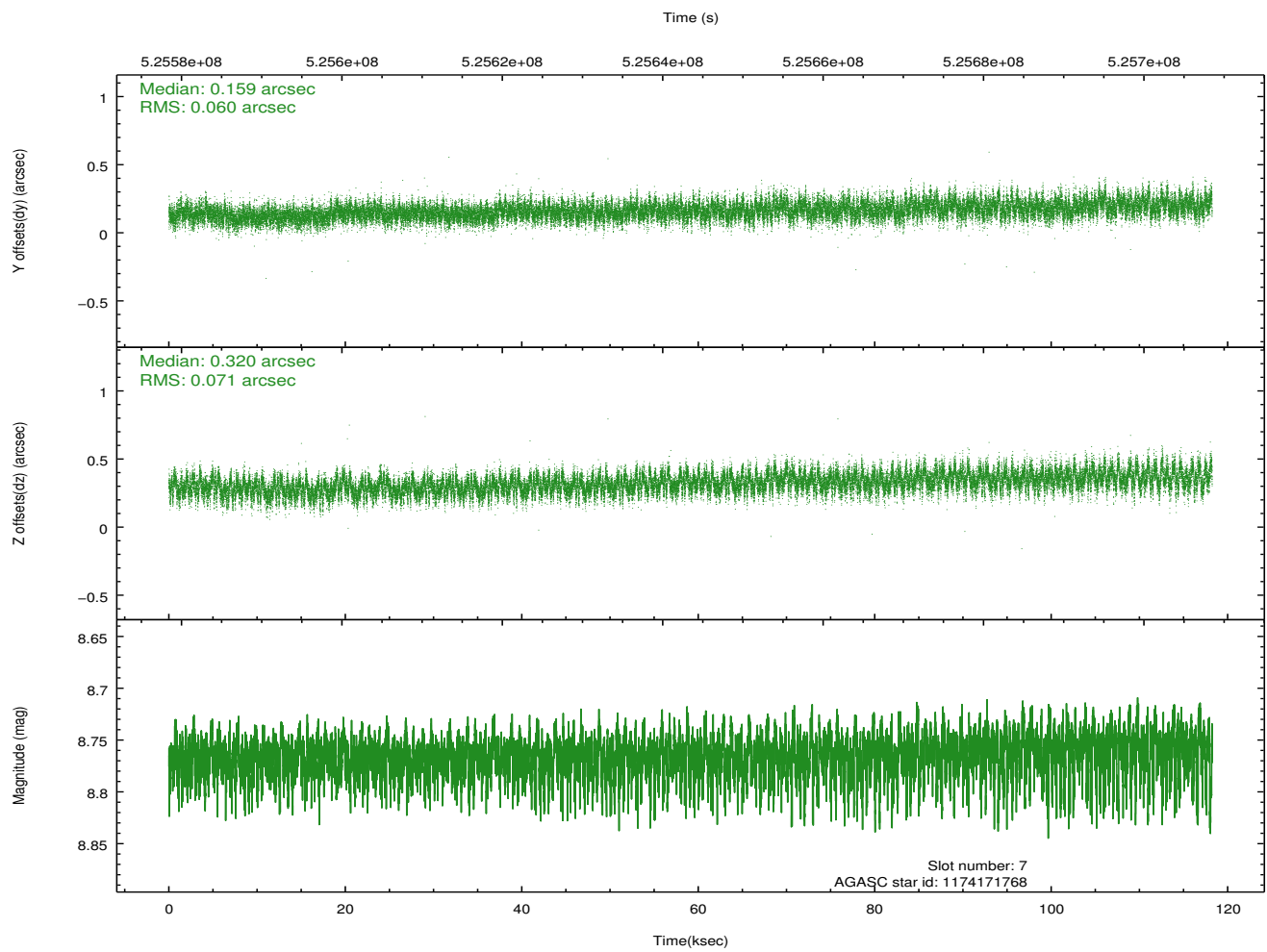
2.4.3 Slot 5



2.4.4 Slot 6

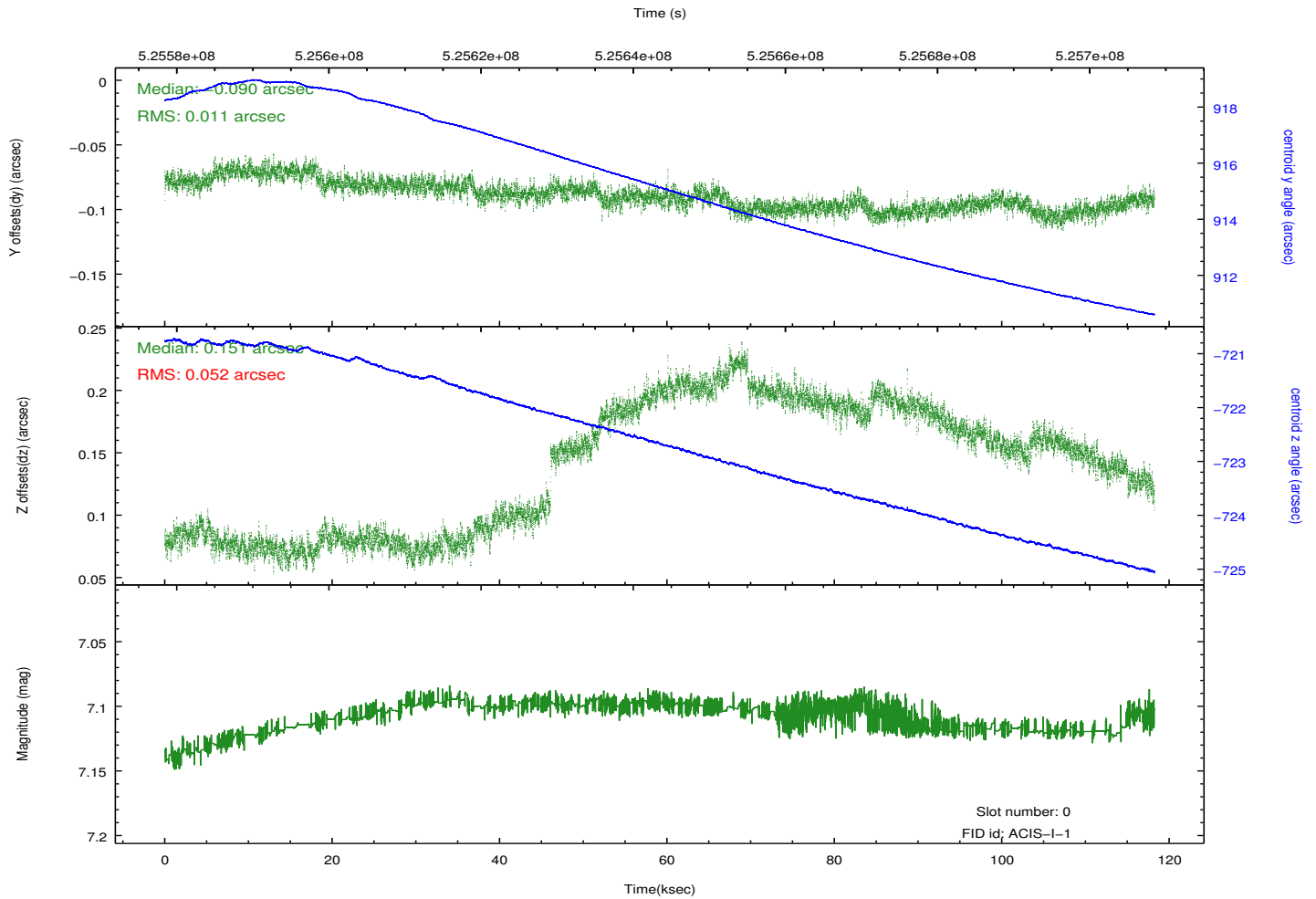
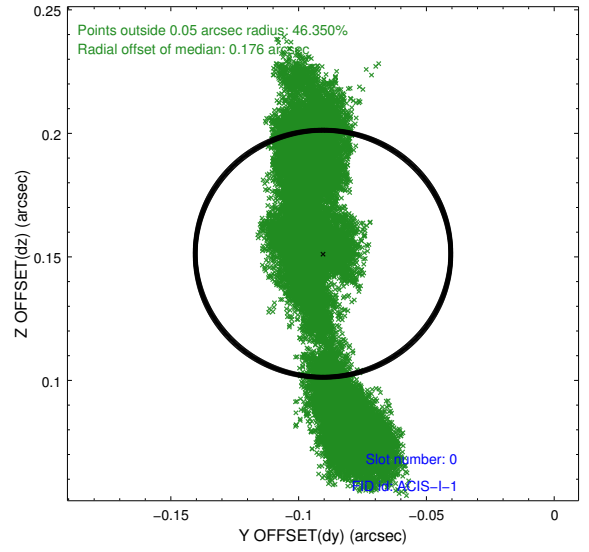
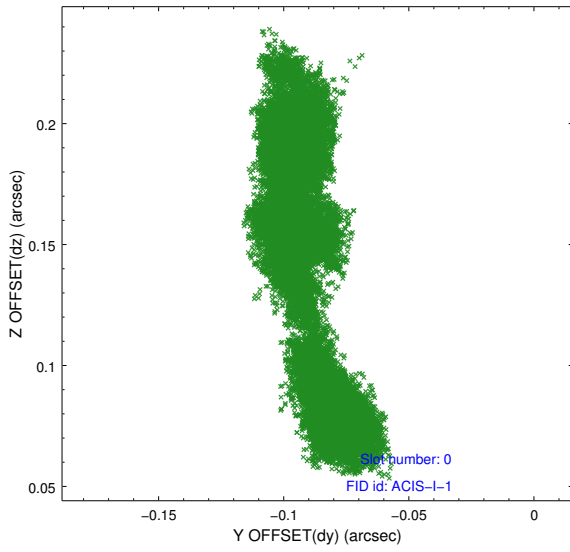


2.4.5 Slot 7

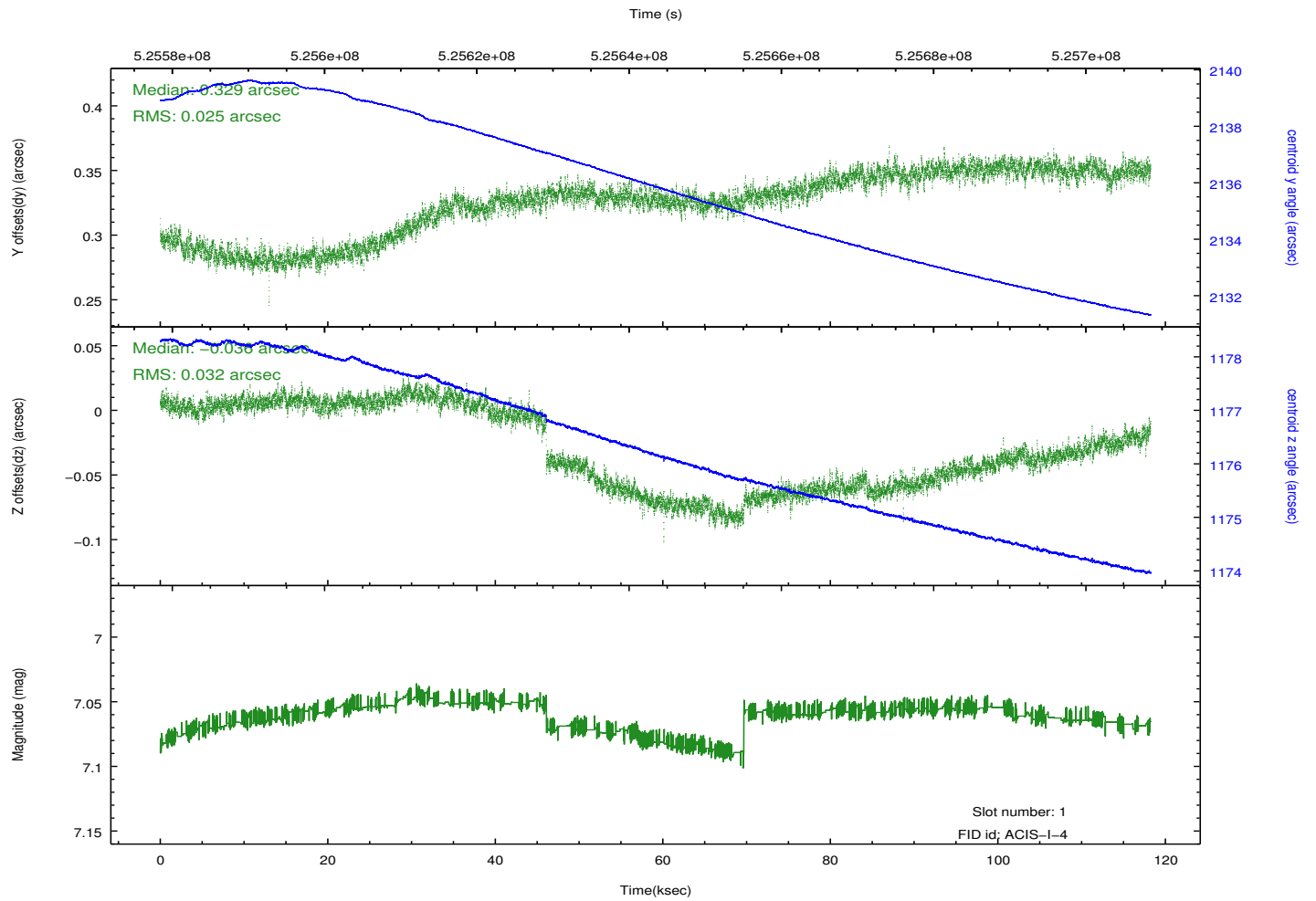
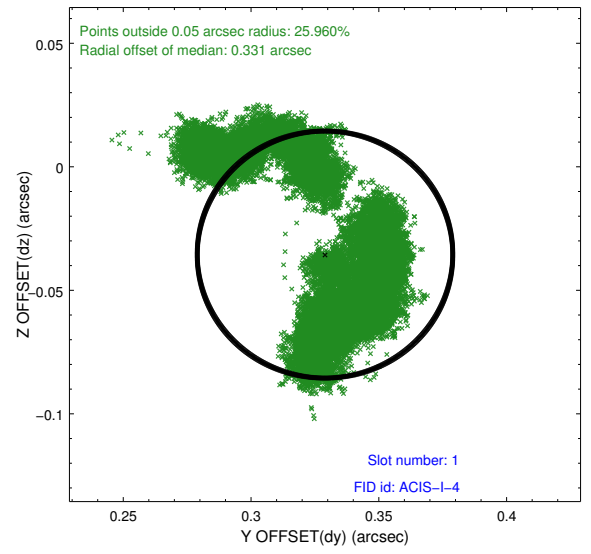
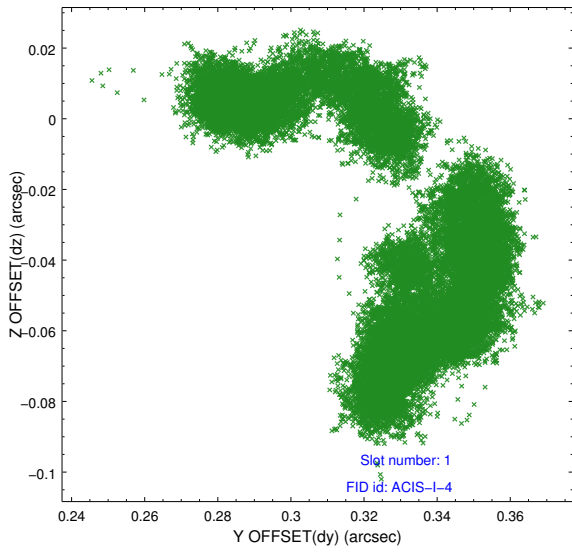


2.5 FID Slots

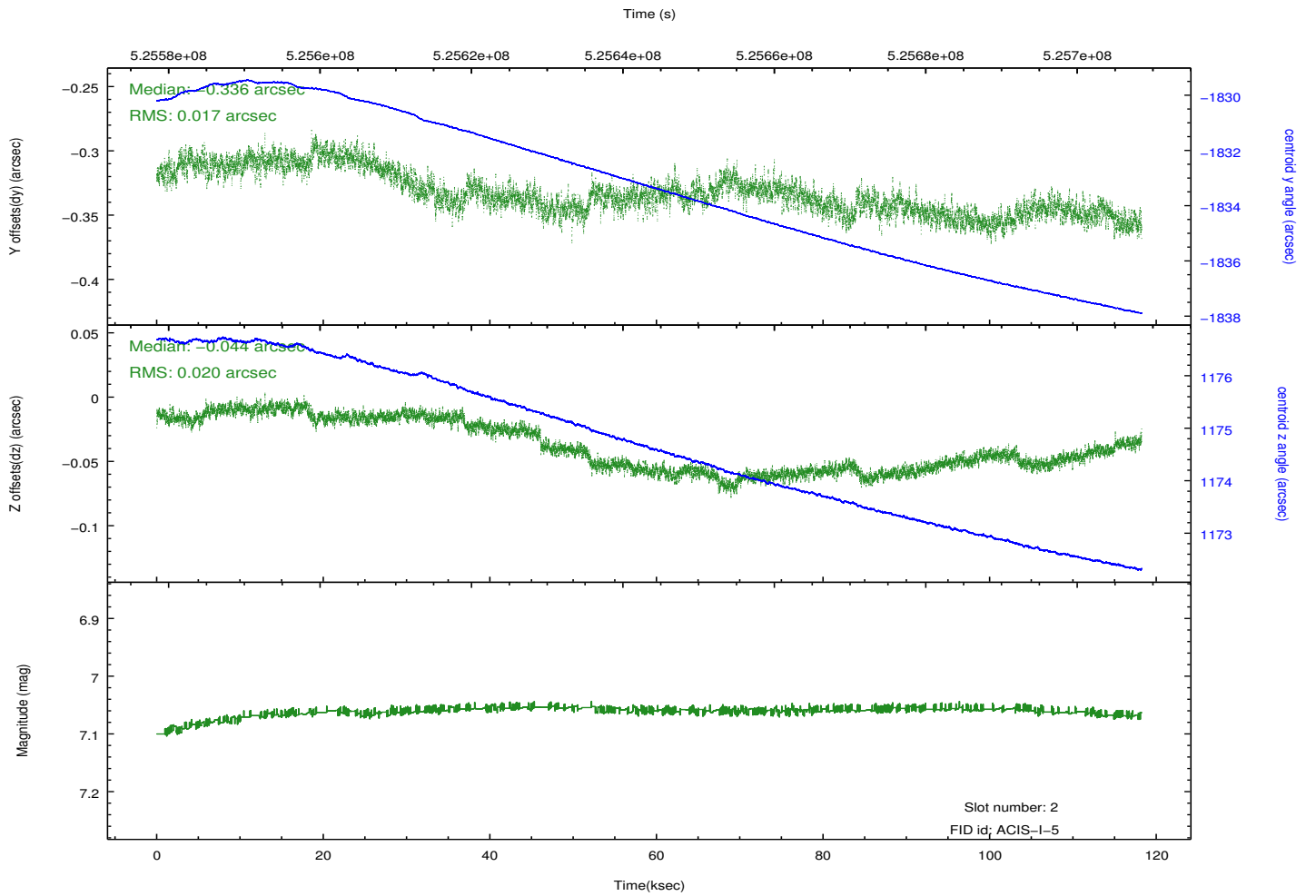
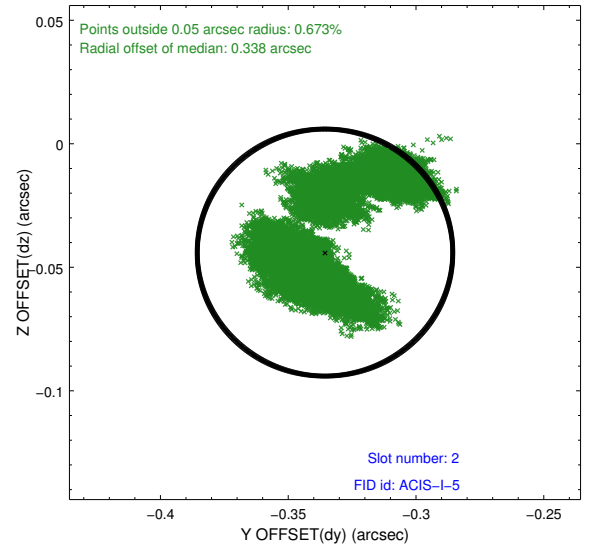
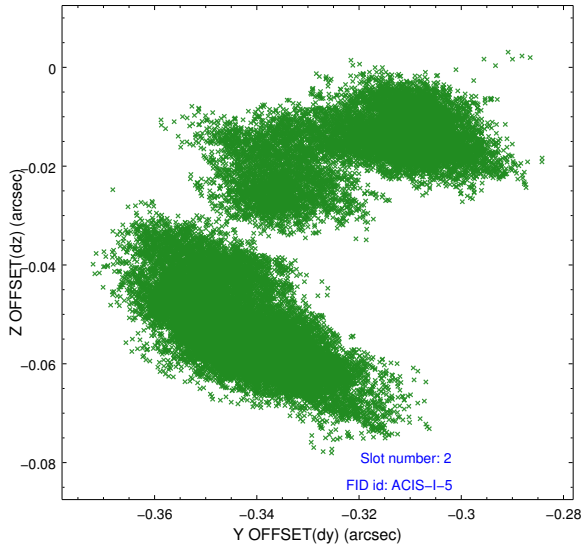
2.5.1 Slot 0



2.5.2 Slot 1



2.5.3 Slot 2



A Summary

A.1 Status

V&V Scientist	Joy Nichols
V&V Date (YYYY-MM-DD)	2014.09.02
V&V Edition	1
V&V Disposition and Status	OK
V&V Charge Time	117.58499355751

A.2 Comments