

# V&V Reference Report

## L2 ASCDS Version : 10.3

Observation 16017 - L2 Version 1  
Chandra X-Ray Center

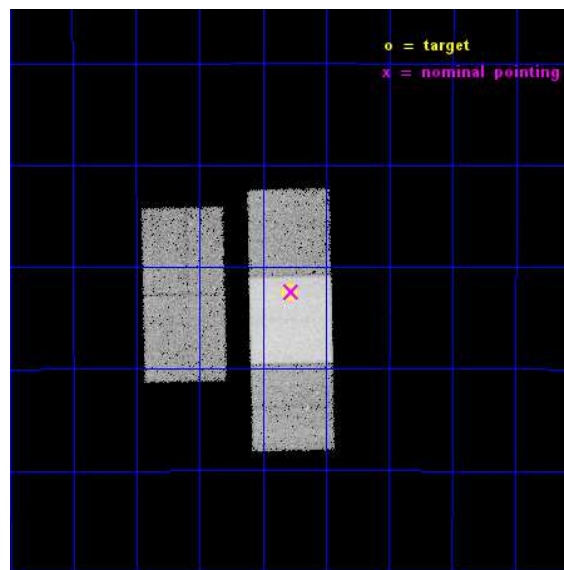
L2 Processing Date : Nov 20 2014

## Contents

<b>1</b>	<b>Front</b>	<b>2</b>
<b>2</b>	<b>OBI</b>	<b>3</b>
2.1	OBI . . . . .	3
2.1.1	Images . . . . .	3
2.1.2	Bias . . . . .	3
2.1.3	Parameters . . . . .	4
2.1.4	Events . . . . .	4
2.2	Compared Parameters . . . . .	5
2.3	Aspect . . . . .	6
2.4	Star Slots . . . . .	9
2.4.1	Slot 3 . . . . .	9
2.4.2	Slot 4 . . . . .	10
2.4.3	Slot 5 . . . . .	11
2.4.4	Slot 6 . . . . .	12
2.4.5	Slot 7 . . . . .	13
2.5	FID Slots . . . . .	14
2.5.1	Slot 0 . . . . .	14
2.5.2	Slot 1 . . . . .	15
2.5.3	Slot 2 . . . . .	16
<b>A</b>	<b>Summary</b>	<b>17</b>
A.1	Status . . . . .	17
A.2	Comments . . . . .	17

# 1 Front

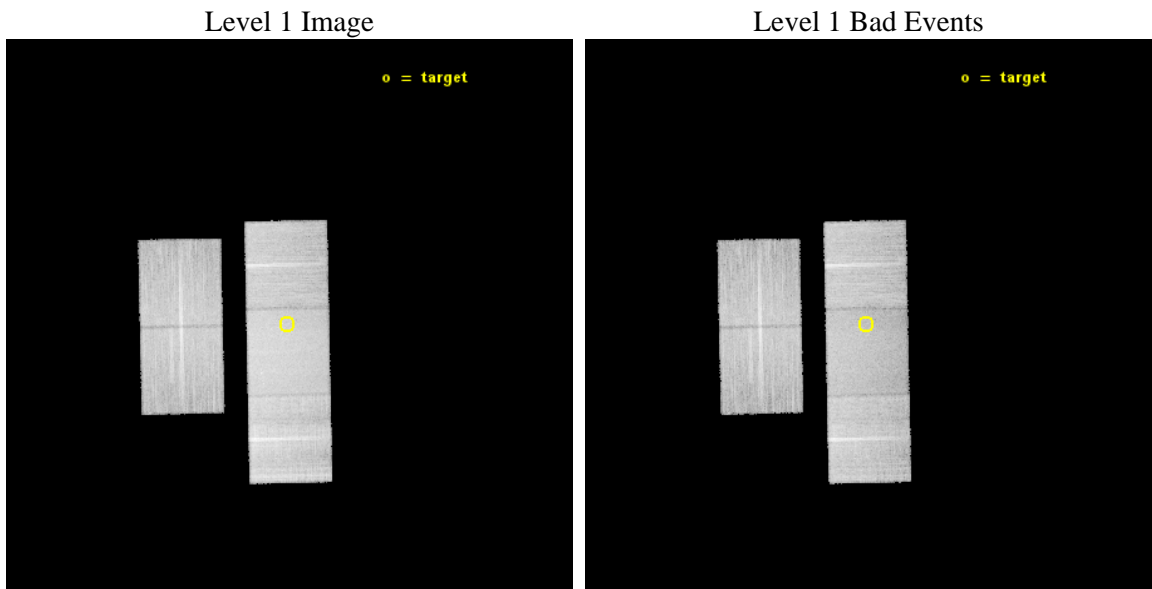
seq_num	601105	Sequence number
obs_id	16017	Observation id
title	[NeV] Emission and Ultraluminous X-ray Sources in Two Low-metallicity Blue Compact Dwarf Galaxies	Proposal title
observer	Prof. Trinh Thuan	Principal investigator
object	Tol1214-277	Source name
dtcycle	0	&#160
cycle	P	events from which exps? Prim/Second/Both
ra_targ	184.32125	Observer's specified target RA [deg]
dec_targ	-28.042417	Observer's specified target Dec [deg]
ra_nom	184.31833985728	Nominal RA [deg]
dec_nom	-28.040632712646	Nominal Dec [deg]
roll_nom	88.77374279728	Nominal Roll [deg]
revision	1	Processing version of data
ontime	30124.65361762	Sum of GTIs [s]
livetime	29731.052840659	Livetime [s]
ontime2	30124.489457607	Sum of GTIs [s]
ontime3	30118.289577007	Sum of GTIs [s]
ontime6	30124.612577617	Sum of GTIs [s]
ontime7	30124.65361762	Sum of GTIs [s]
ontime8	30118.248517096	Sum of GTIs [s]
l2events	164597	Number of level 2 events



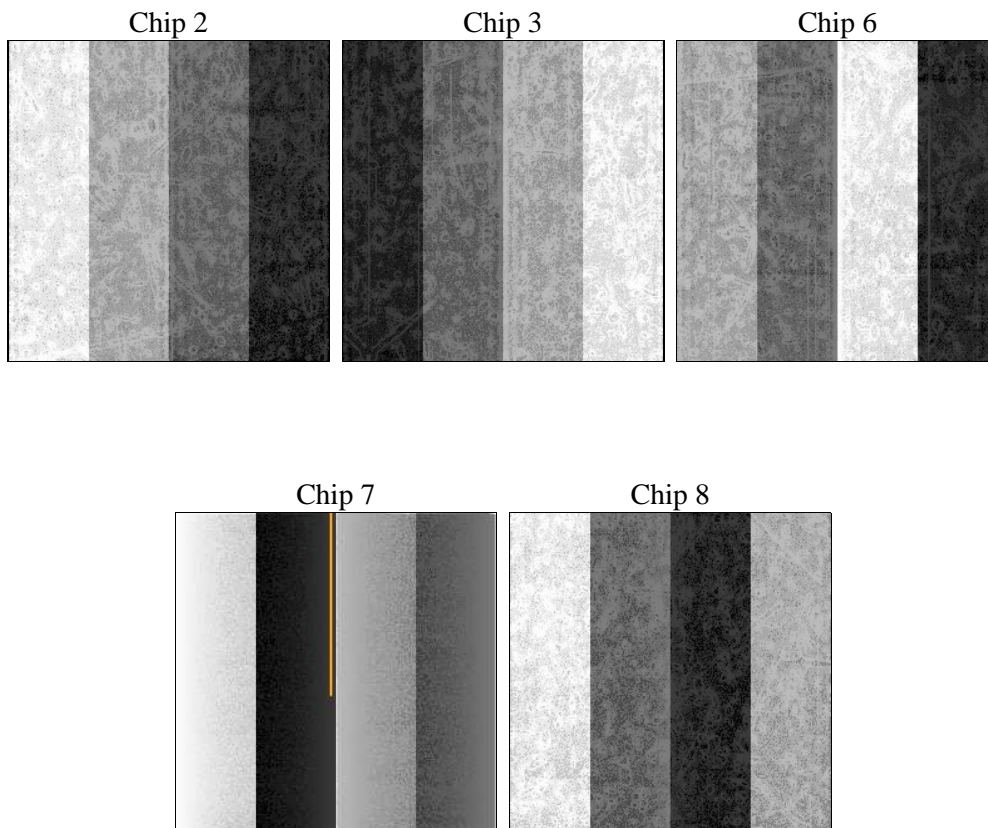
## 2 OBI

### 2.1 OBI

#### 2.1.1 Images



#### 2.1.2 Bias



### 2.1.3 Parameters

obi_num	0	Obi number	sched_exp_time	30055.000000	[s] Scheduled observation exposure time
ascdsver	10.3	Processing system revision	ontime	30124.65361762	Sum of GTIs [s]
caldbver	4.6.4	&#160	ontime2	30124.489457607	Sum of GTIs [s]
date	2014-11-20T23:44:33	Date and time of file creation	ontime3	30118.289577007	Sum of GTIs [s]
revision	1	Processing version of data	ontime6	30124.612577617	Sum of GTIs [s]
			ontime7	30124.65361762	Sum of GTIs [s]
			ontime8	30118.248517096	Sum of GTIs [s]
			l1events	949674	Number of level 1 events

### 2.1.4 Events

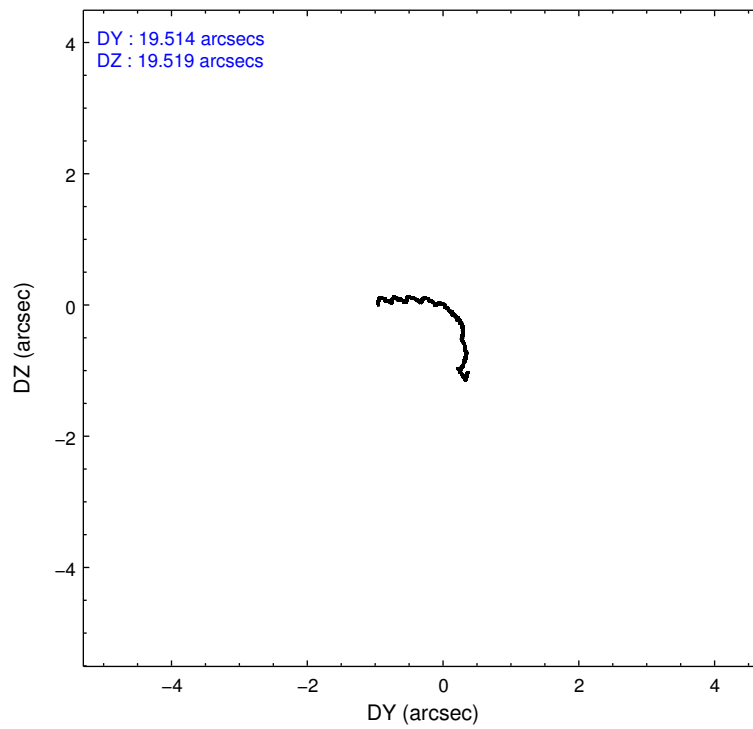
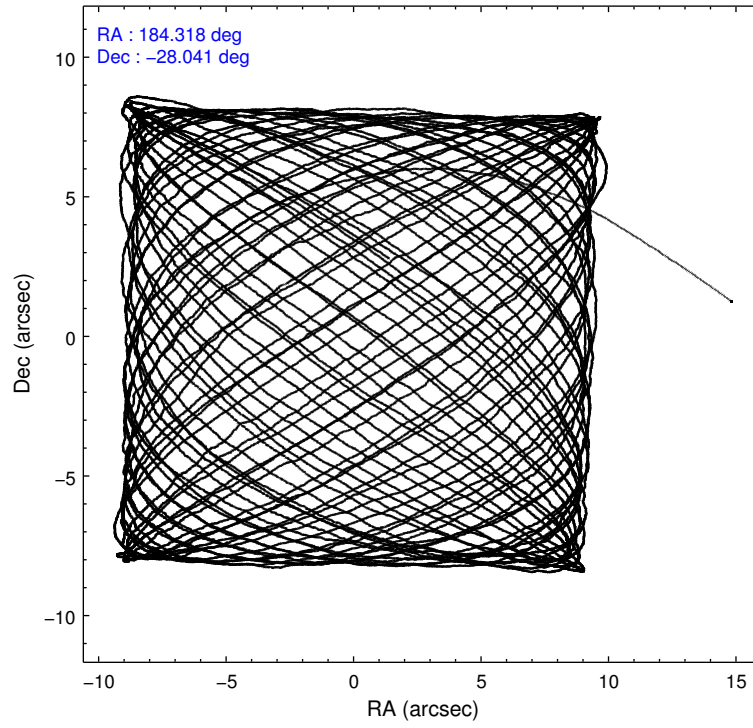
	ccd 2	ccd 3	ccd 6	ccd 7	ccd 8
level 1 events	160966	162673	174149	224530	227356
rejected events	142367	144231	154207	126913	167272
rejected %	88%	88%	88%	56%	73%

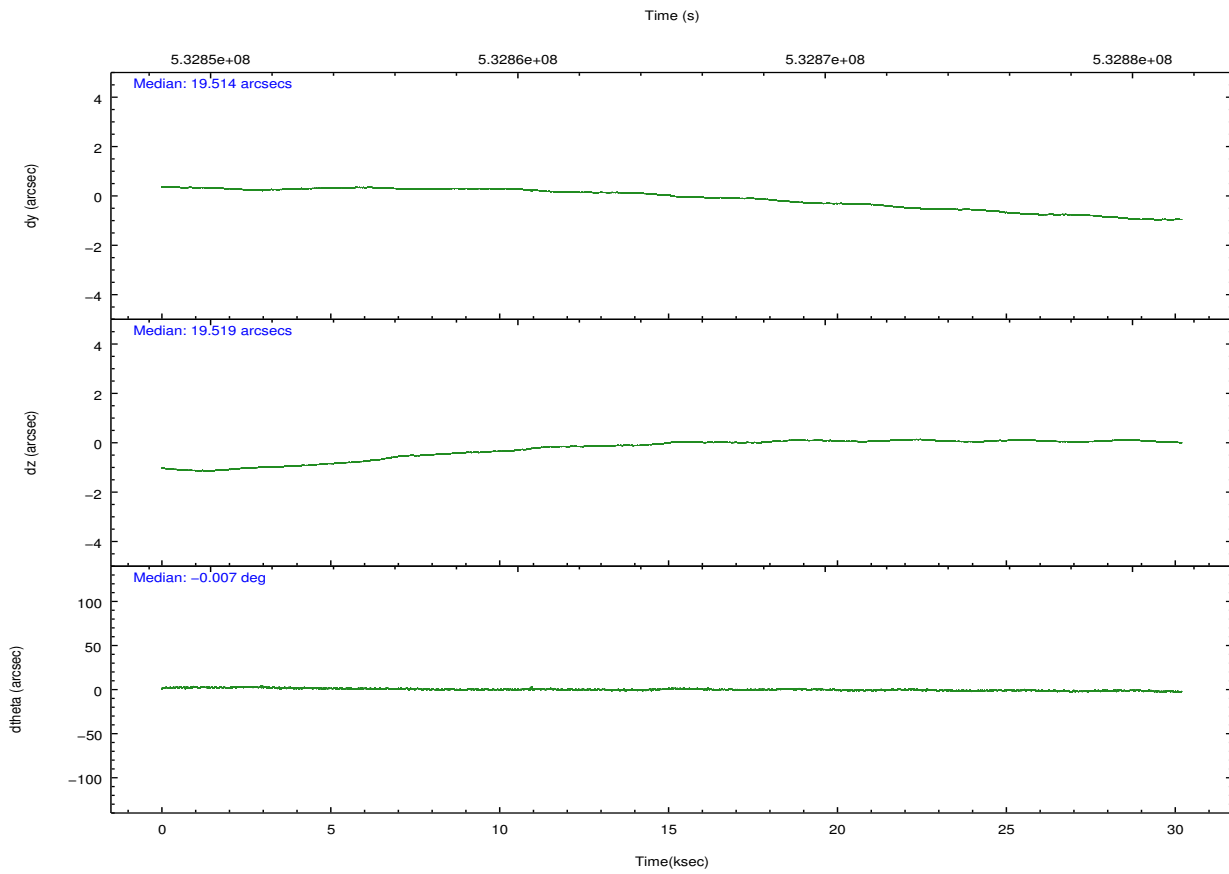
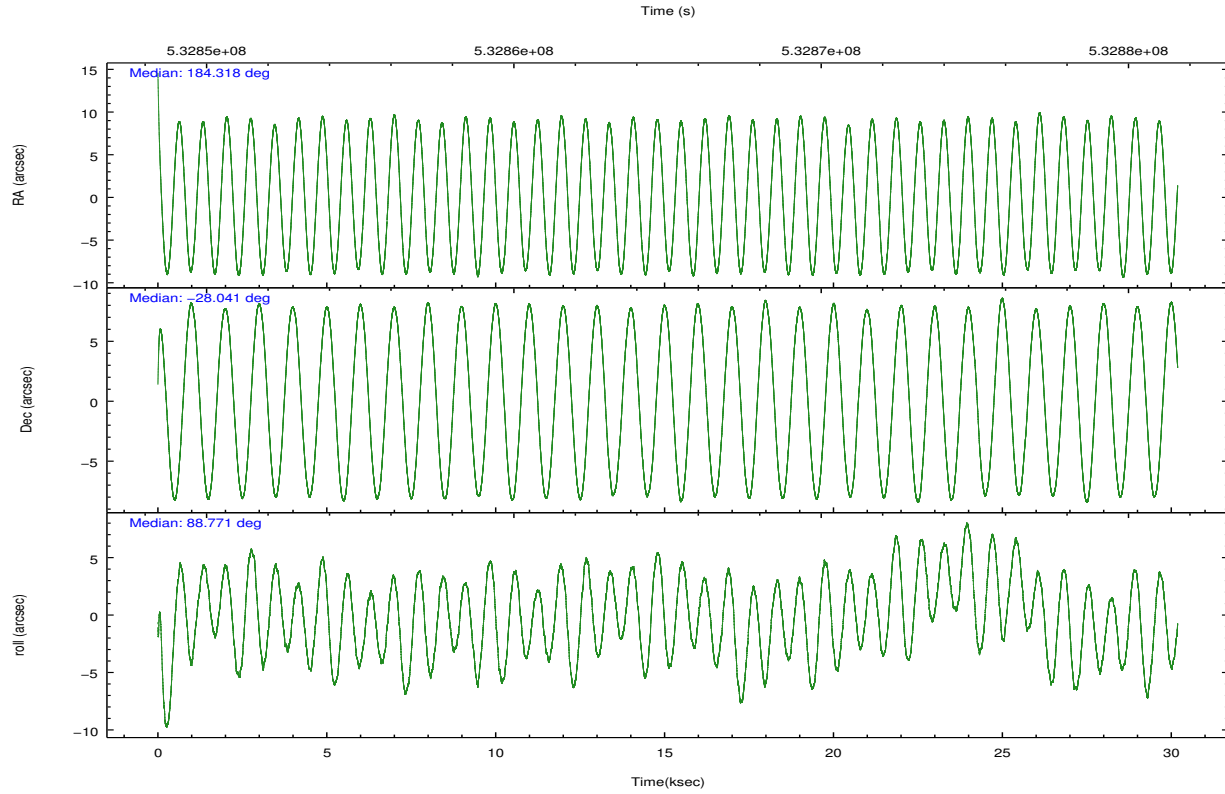
	ccd 2	ccd 3	ccd 6	ccd 7	ccd 8
grade 0 events	6414	6565	6647	8459	17832
	3%	4%	3%	3%	7%
grade 1 events	85	108	83	294	183
	0%	0%	0%	0%	0%
grade 2 events	4637	4144	4490	20091	14313
	2%	2%	2%	8%	6%
grade 3 events	1891	1997	2060	8171	5961
	1%	1%	1%	3%	2%
grade 4 events	1869	1967	2009	8185	5693
	1%	1%	1%	3%	2%
grade 5 events	7249	8554	8467	22816	12581
	4%	5%	4%	10%	5%
grade 6 events	3788	3772	4738	52720	16286
	2%	2%	2%	23%	7%
grade 7 events	135033	135566	145655	103794	154507
	83%	83%	83%	46%	67%

## 2.2 Compared Parameters

Parameter	Planned	Actual	Parameter	Planned	Actual
Instrument	ACIS	ACIS	Obspar format version number	7	7
Detector	ACIS-23678	ACIS-23678	Obspar file type	PREDICTED	ACTUAL
Grating	NONE	NONE	Obspar update status	NONE	UPDATED
Data mode	VFAINT	VFAINT	CCD I0 on	N	N
Observation mode	POINTING	POINTING	CCD I1 on	N	N
[deg] Pointing RA	184.333678	184.3183398572807	CCD I2 on	O1	Y
[deg] Pointing Dec	-28.064522	-28.04063271264623	CCD I3 on	Y	Y
[deg] Pointing Roll	88.624331	88.77374279728011	CCD S0 on	N	N
[mm] SIM focus pos	-0.684267	-0.6828225247311905	CCD S1 on	N	N
[mm] SIM defocus	0	0.001444936568705701	CCD S2 on	Y	Y
[mm] SIM translation stage pos	-190.132523	-190.1425803651734	CCD S3 on	Y	Y
[mm] SIM translation stage offset	0	0.01005778216563158	CCD S4 on	Y	Y
[s] Observation start time (MET)	532850054.184000	532848812.41336	CCD S5 on	N	N
Observation start date	2014-11-20T05:53:07	2014-11-20T05:33:32	Number of optional ACIS chips dropped	0	0
[s] Observation end time (MET)	532880109.184000	532880802.15264	On-chip summing requested	N	N
Observation end date	2014-11-20T14:14:02	2014-11-20T14:26:42	Subarray requested	NONE	NONE
Read mode	TIMED	TIMED	Alternating exposures requested	N	N
			[s] Primary exposure time	0.000000	3.1

## 2.3 Aspect





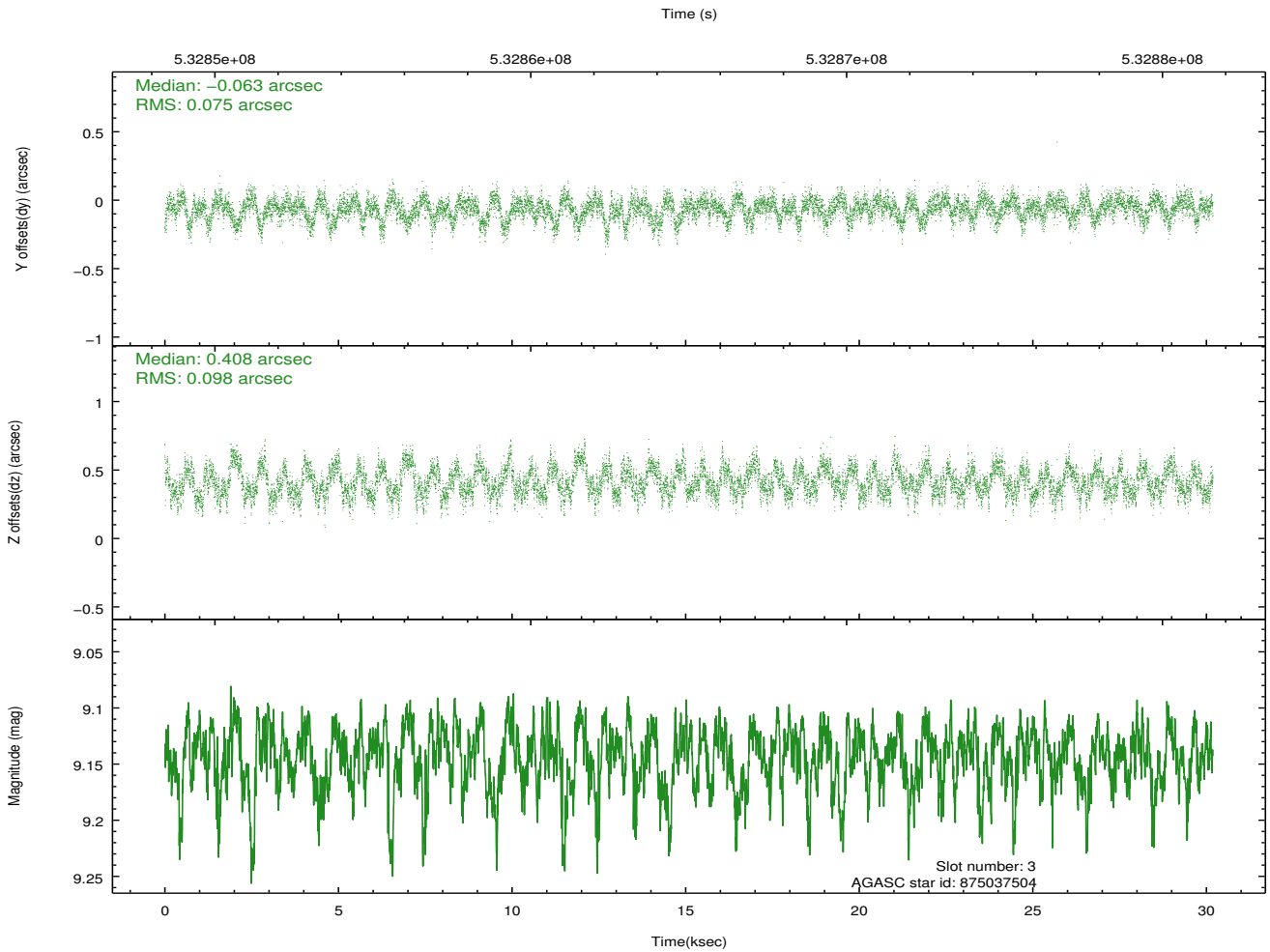
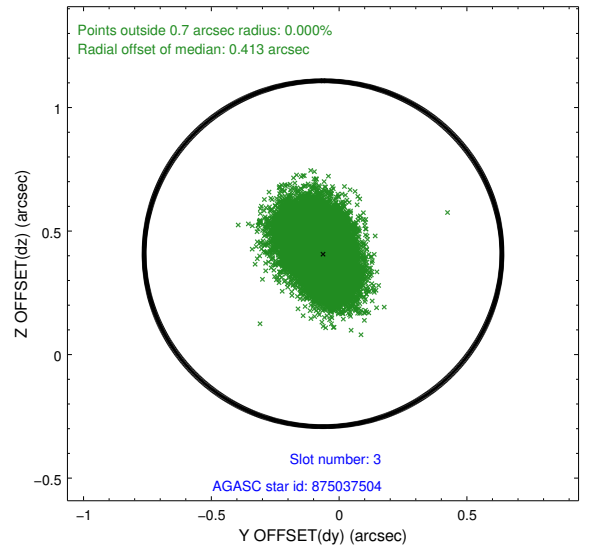
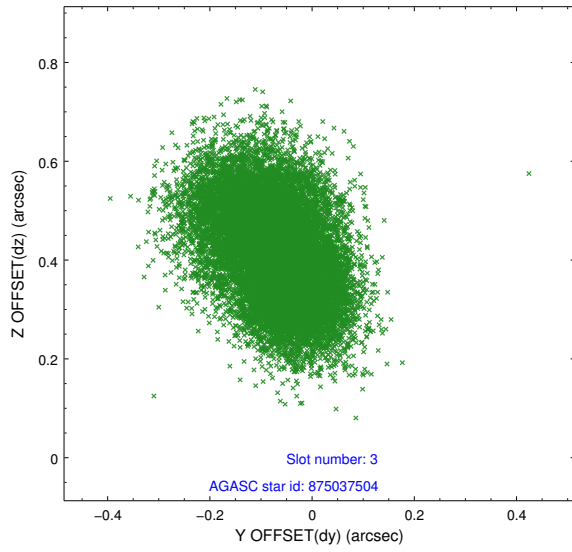
### Slot Statistics

slot	status	used	id	mag	n_pts	med_dy	med_dz	dr1	dr2	ra	dec	mean_y	mean_z
0	FID		ACIS-S-1	7.02	7364	0.149	-0.022	0.014	0.022	0.000000	0.000000	923.76	-1736.33
1	FID		ACIS-S-2	6.95	7364	-0.122	-0.004	0.015	0.028	0.000000	0.000000	-772.38	-1740.99
2	FID		ACIS-S-5	7.05	7363	-0.052	0.036	0.015	0.024	0.000000	0.000000	-1825.69	161.13
3	GUIDE	used	875037504	9.14	14715	-0.063	0.408	0.132	0.213	184.075416	-27.951342	386.76	831.43
4	GUIDE	used	875040240	7.62	14727	-0.406	-0.406	0.074	0.116	184.058283	-27.434894	2243.15	934.39
5	GUIDE	used	875567096	9.66	14715	0.295	-0.275	0.148	0.250	183.911828	-28.305826	-902.79	1315.41
6	GUIDE	used	877266216	7.58	14655	-0.255	0.042	0.084	0.138	184.445976	-28.271411	-736.38	-373.54
7	GUIDE	used	877269248	7.92	14719	0.436	0.220	0.071	0.115	184.998486	-28.525542	-1614.40	-2141.08

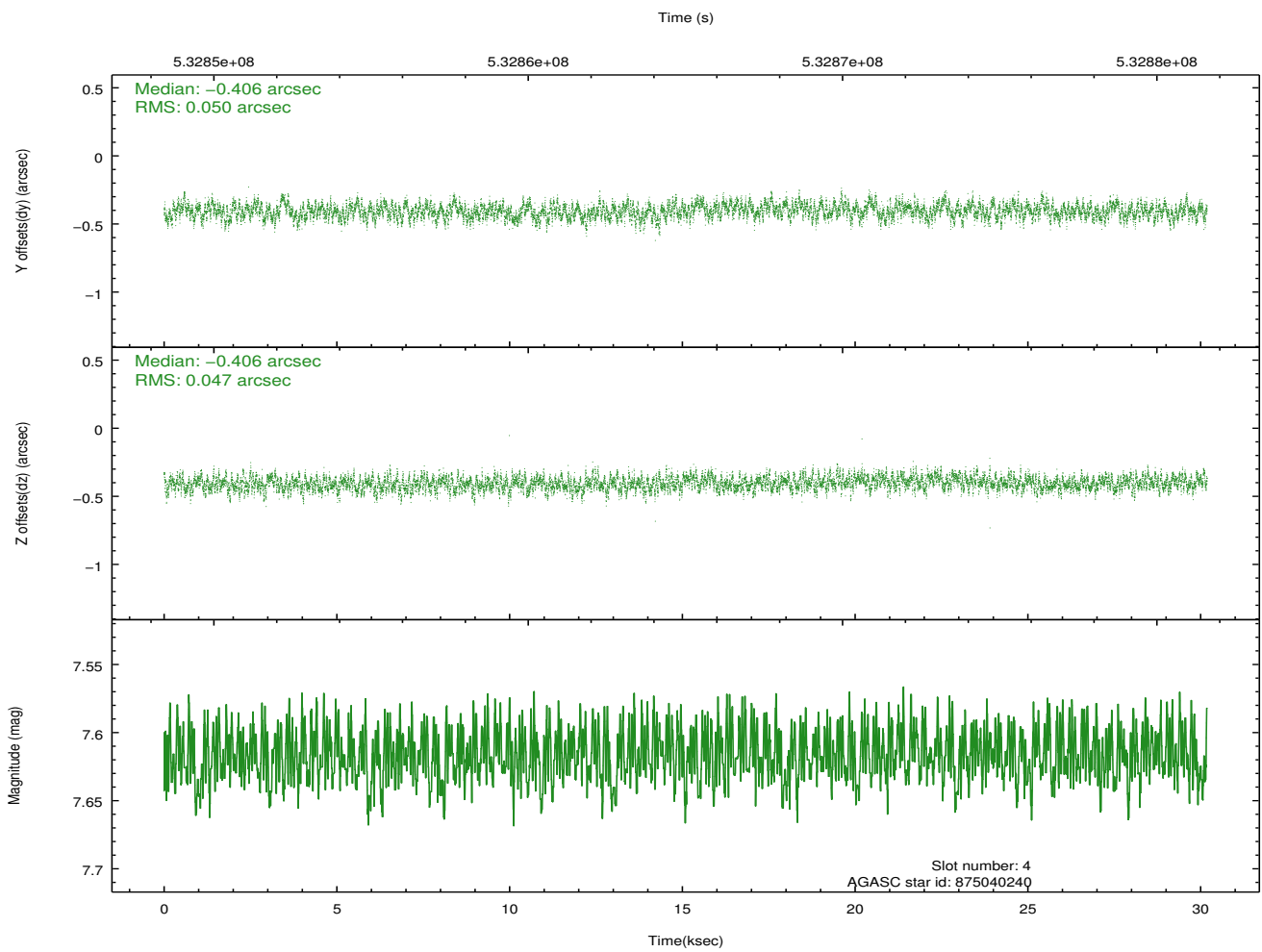
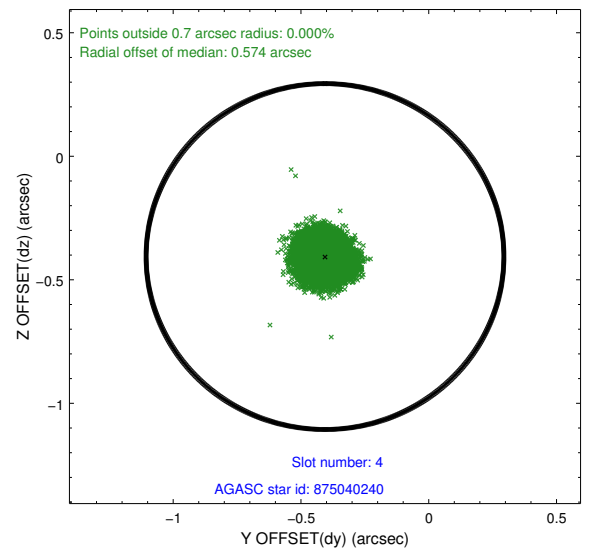
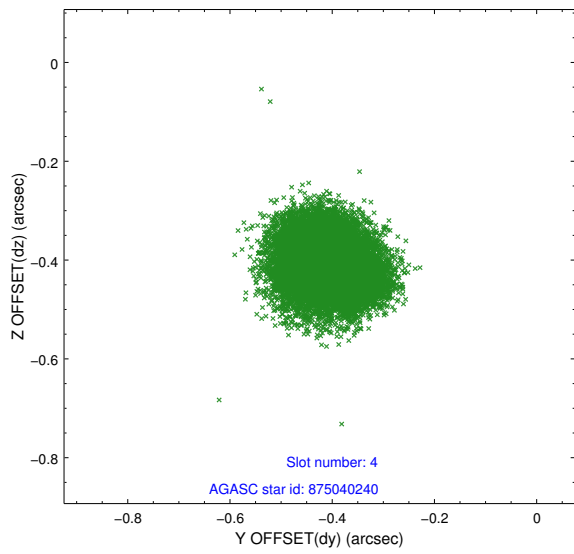
∞

## 2.4 Star Slots

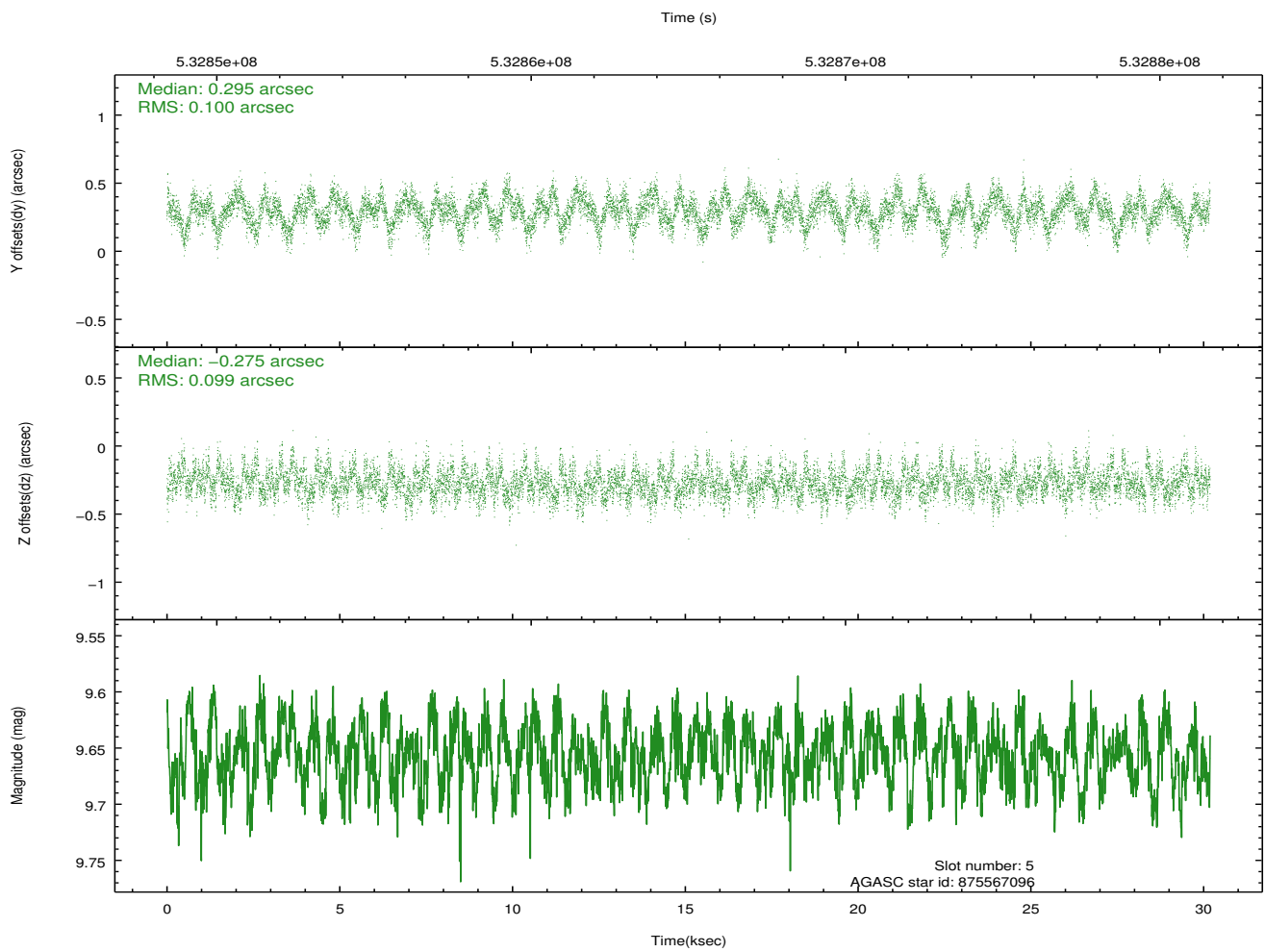
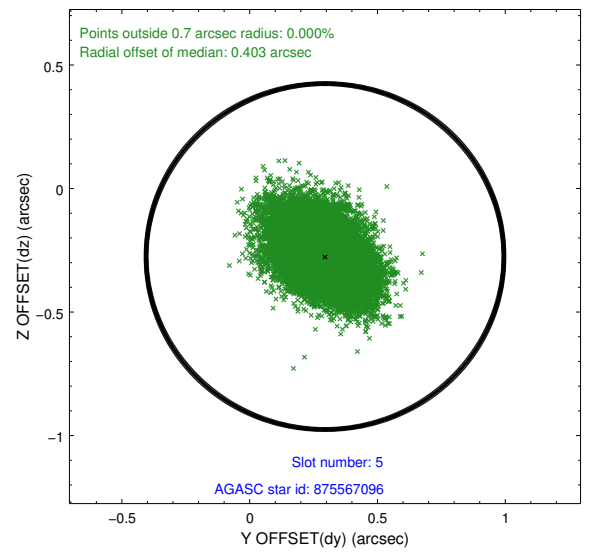
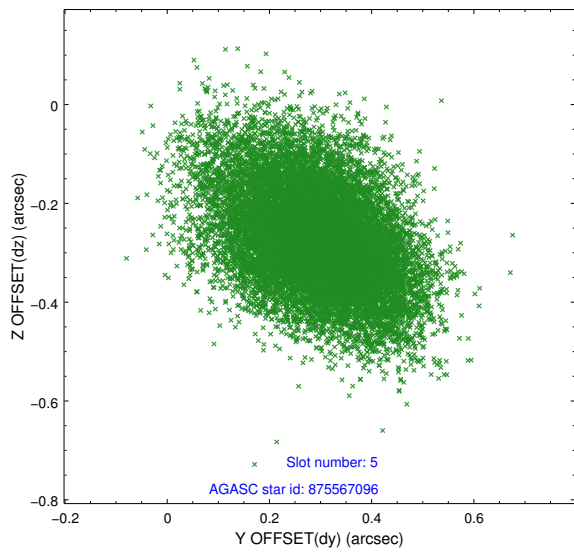
### 2.4.1 Slot 3



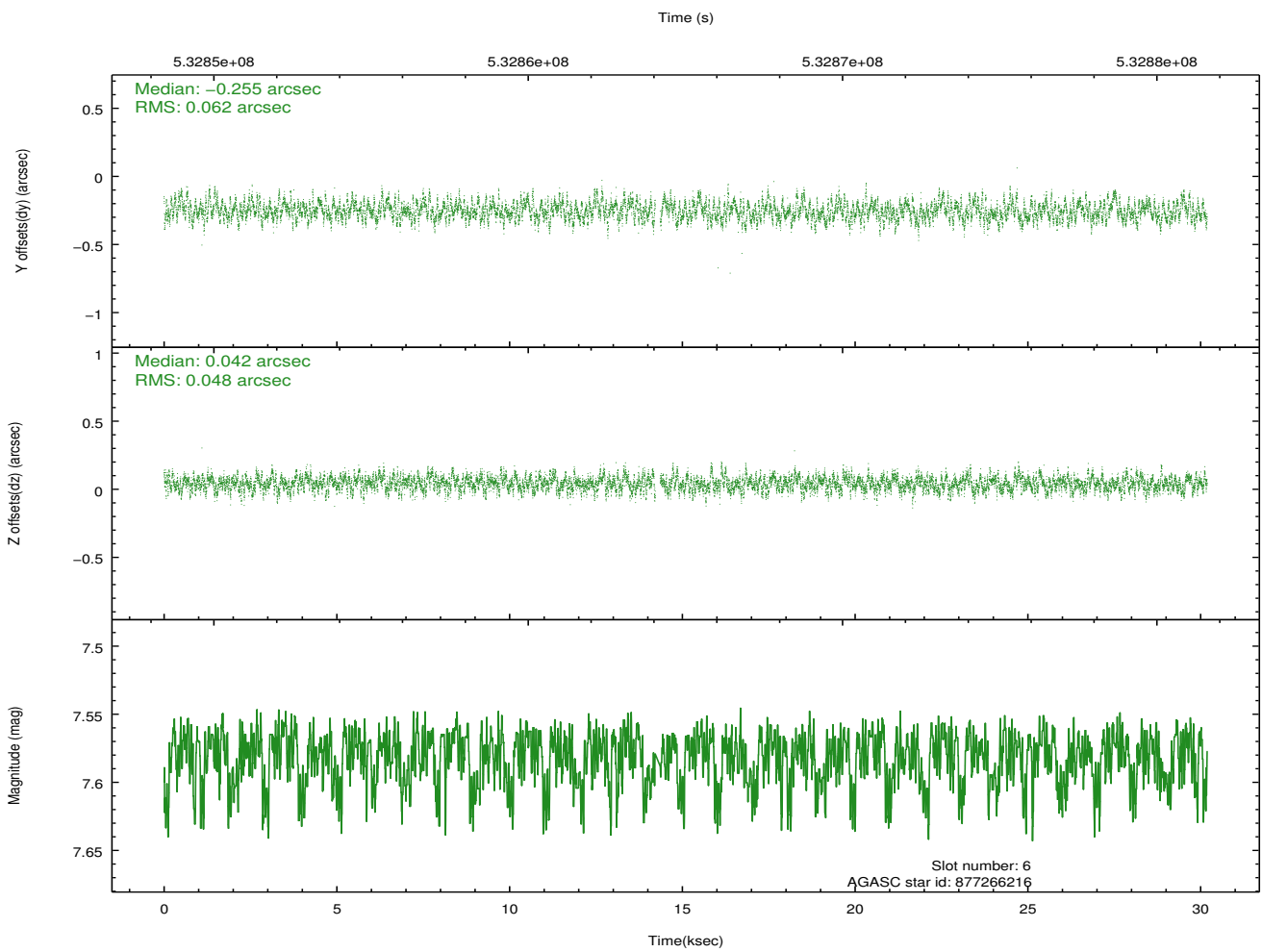
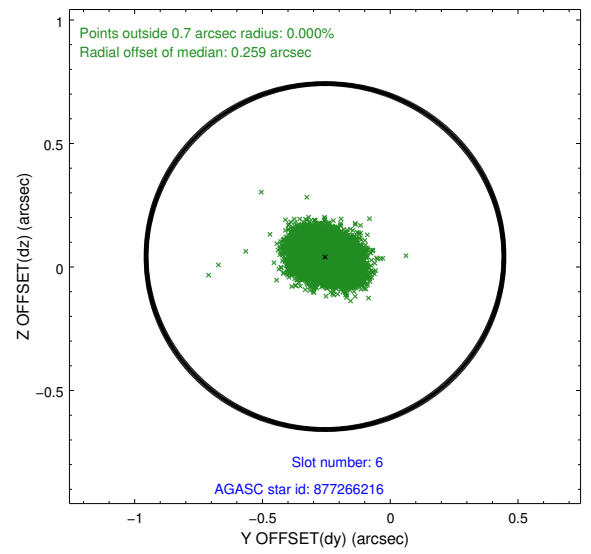
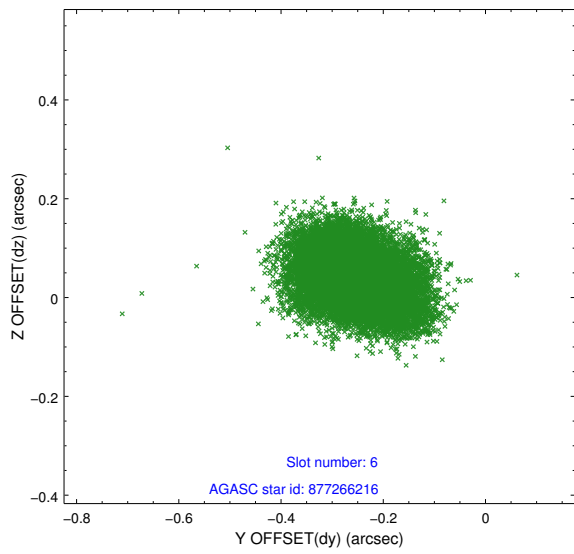
## 2.4.2 Slot 4



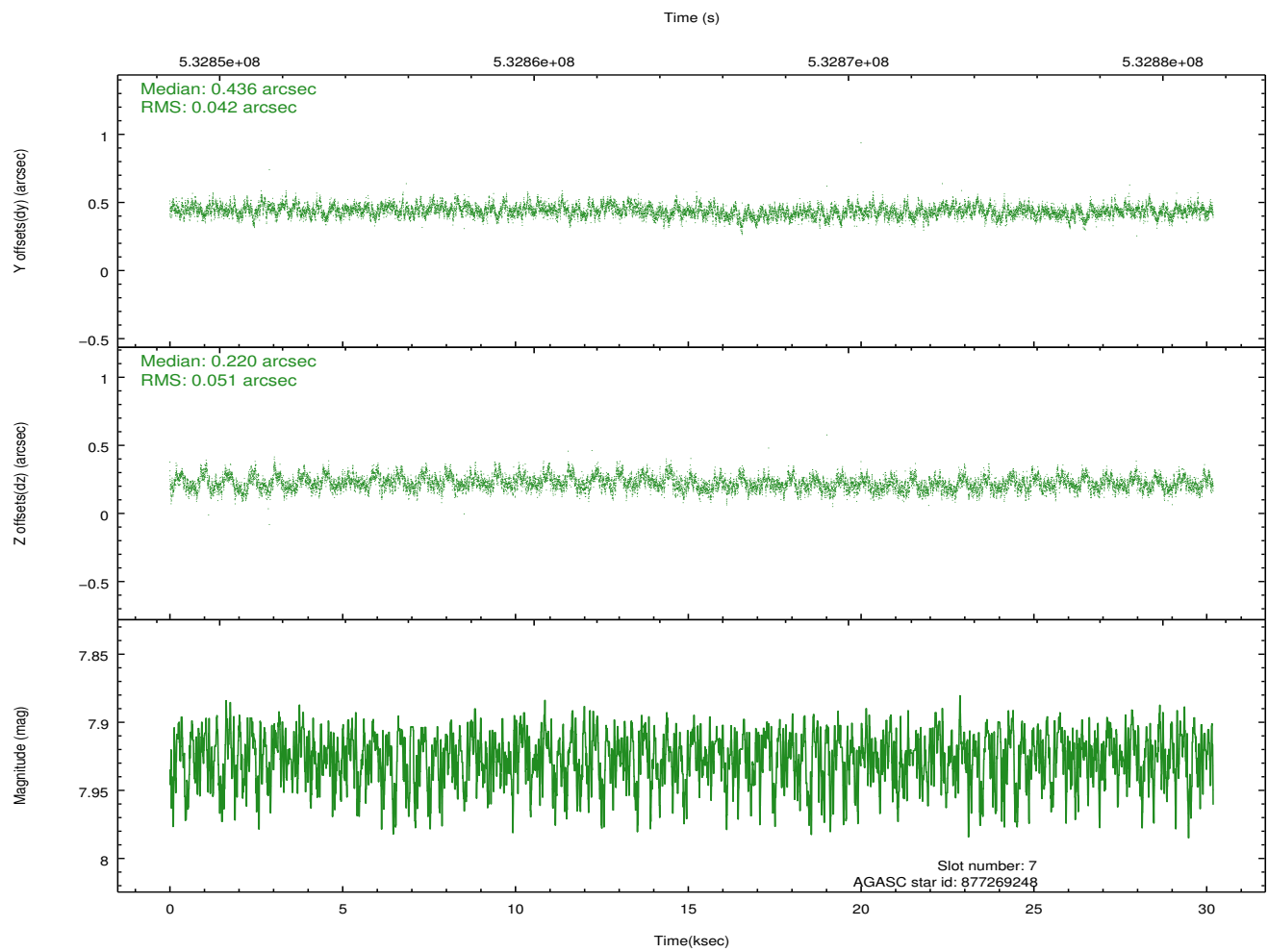
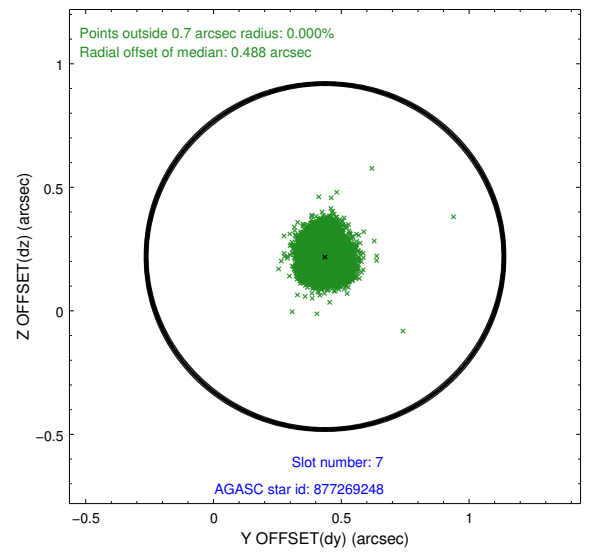
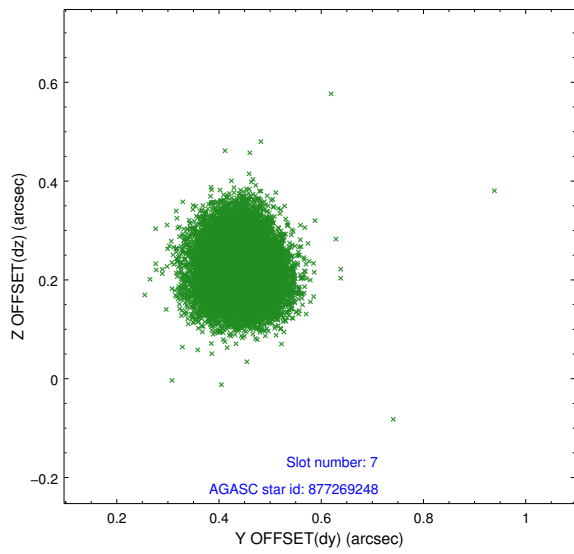
### 2.4.3 Slot 5



## 2.4.4 Slot 6

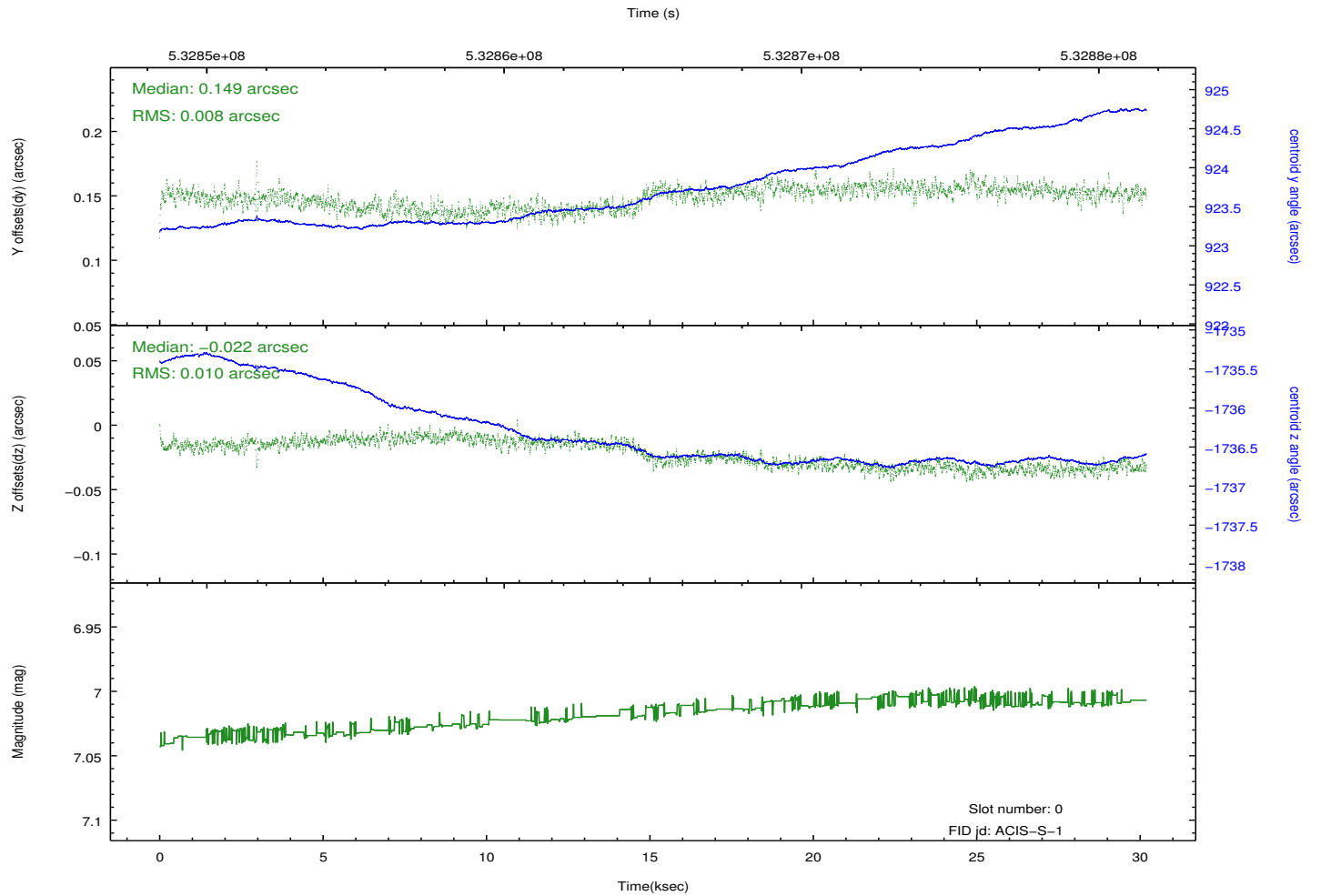
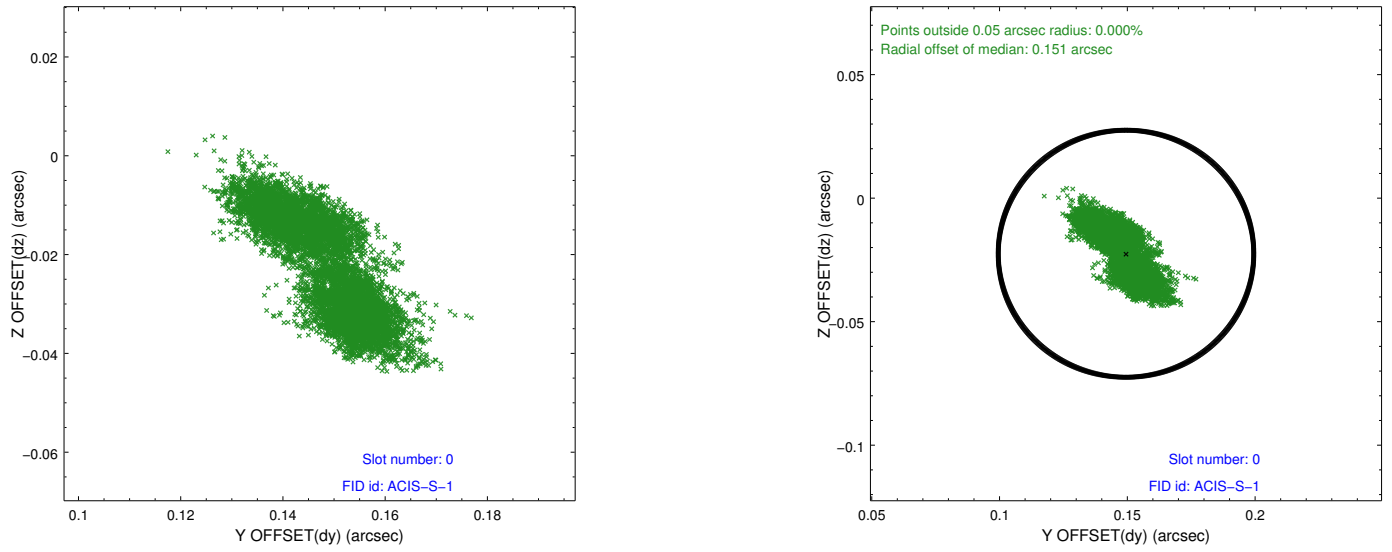


## 2.4.5 Slot 7

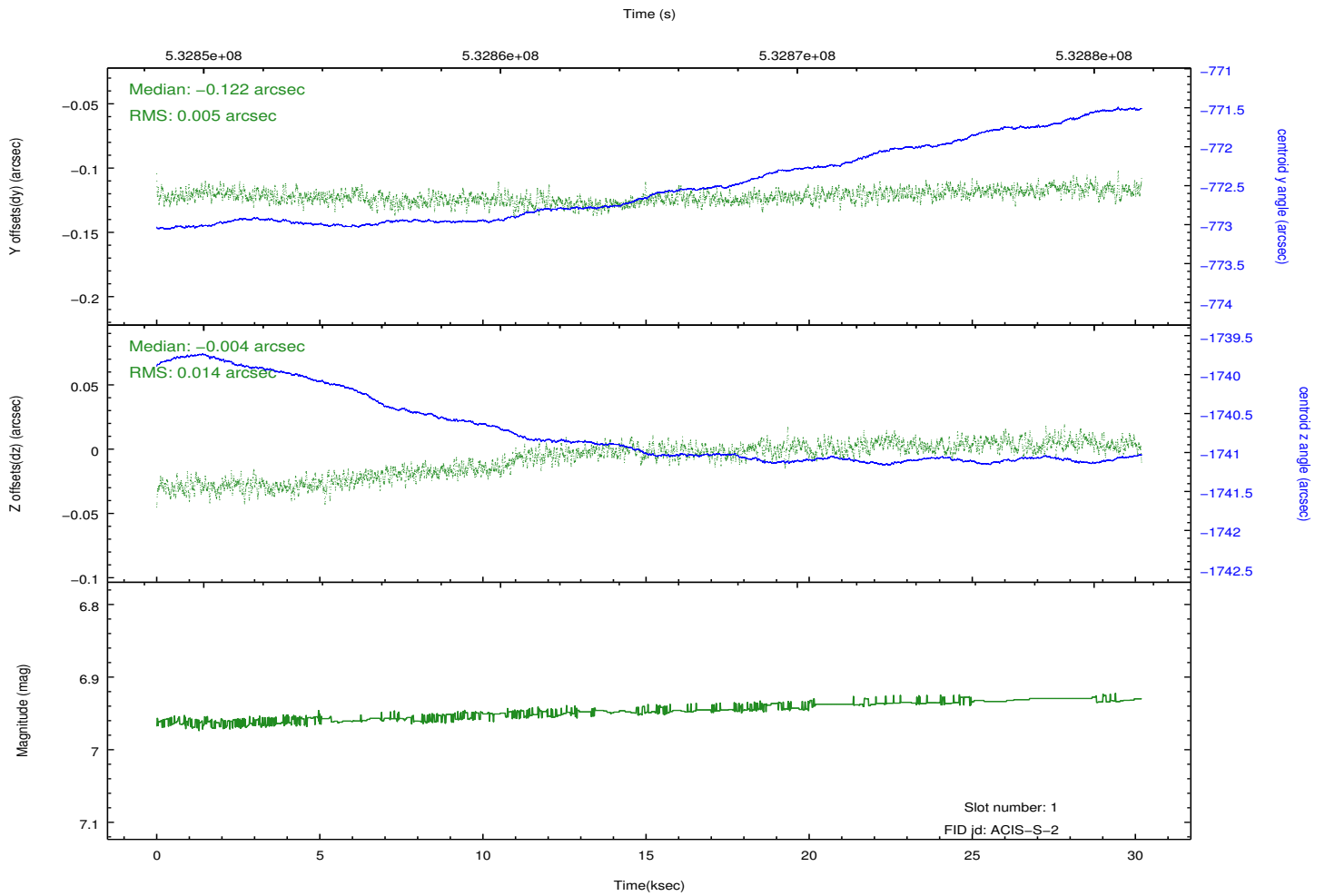
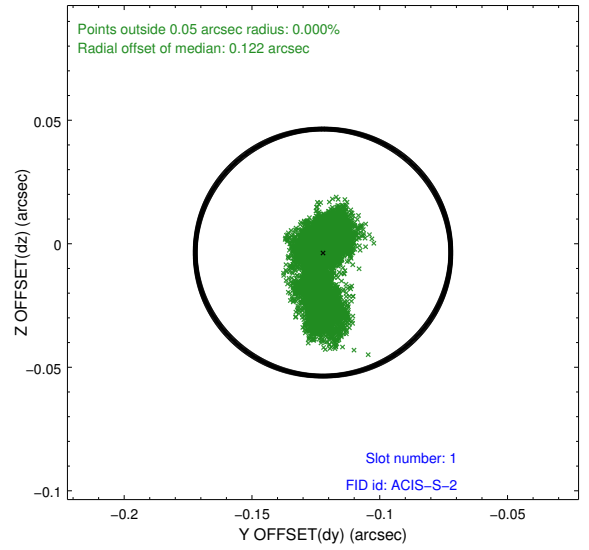
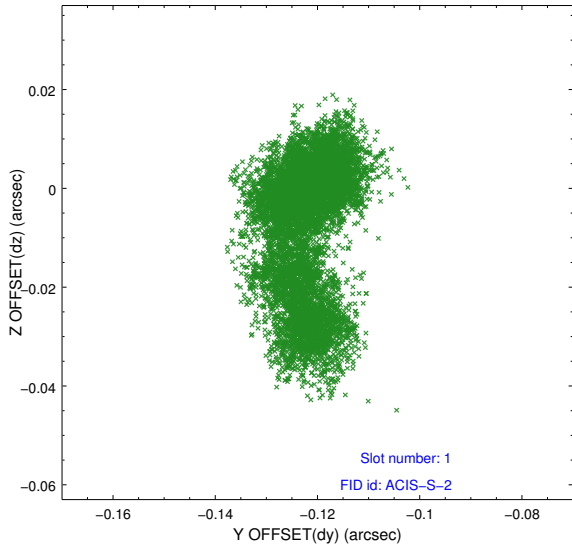


## 2.5 FID Slots

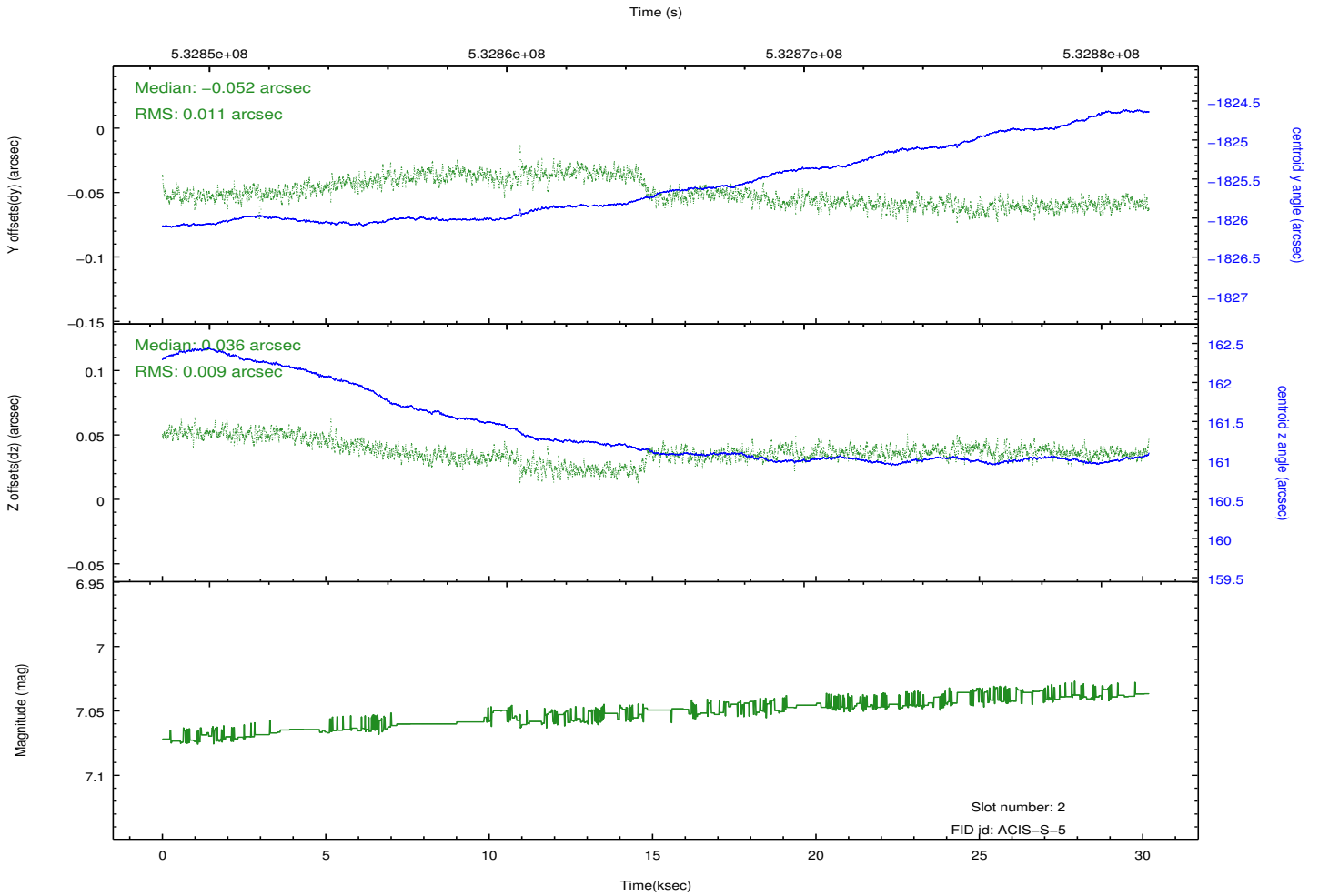
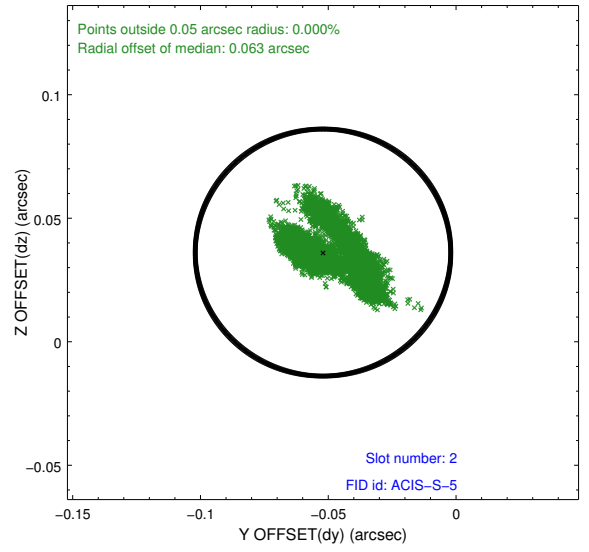
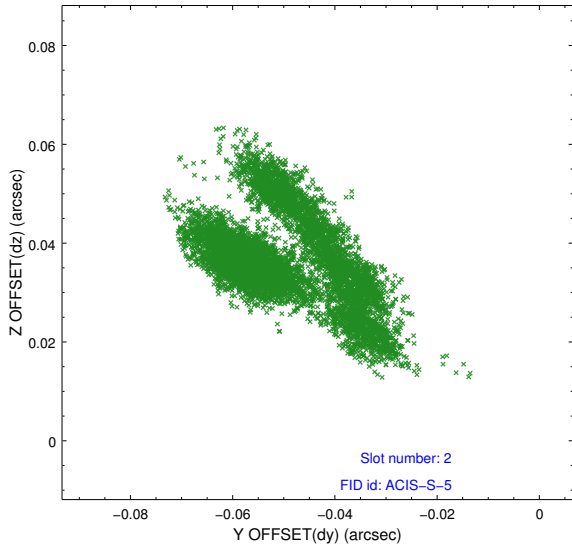
### 2.5.1 Slot 0



## 2.5.2 Slot 1



### 2.5.3 Slot 2



## **A Summary**

### **A.1 Status**

V&V Scientist	Jen Lauer
V&V Date (YYYY-MM-DD)	2014.11.21
V&V Edition	1
V&V Disposition and Status	OK
V&V Charge Time	30.12465361762

### **A.2 Comments**