

# V&V Reference Report

## L2 ASCDS Version : 10.2.4

Observation 16127 - L2 Version 1  
Chandra X-Ray Center

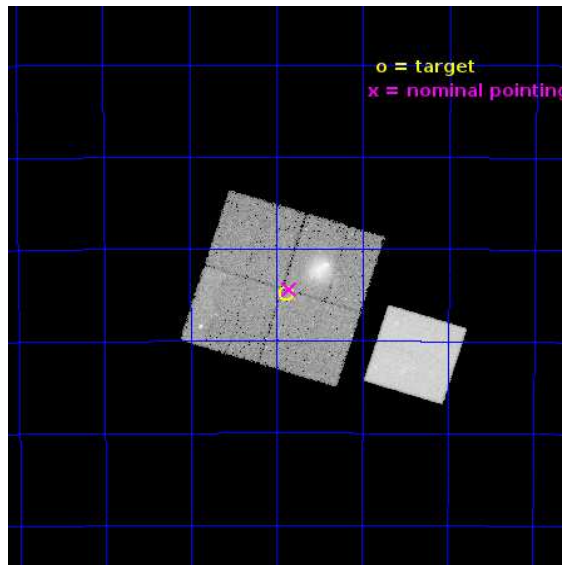
L2 Processing Date : Jul 26 2014

## Contents

<b>1</b>	<b>Front</b>	<b>2</b>
<b>2</b>	<b>OBI</b>	<b>3</b>
2.1	OBI . . . . .	3
2.1.1	Images . . . . .	3
2.1.2	Bias . . . . .	3
2.1.3	Parameters . . . . .	4
2.1.4	Events . . . . .	4
2.2	Compared Parameters . . . . .	5
2.3	Aspect . . . . .	6
2.4	Star Slots . . . . .	9
2.4.1	Slot 3 . . . . .	9
2.4.2	Slot 4 . . . . .	10
2.4.3	Slot 5 . . . . .	11
2.4.4	Slot 6 . . . . .	12
2.4.5	Slot 7 . . . . .	13
2.5	FID Slots . . . . .	14
2.5.1	Slot 0 . . . . .	14
2.5.2	Slot 1 . . . . .	15
2.5.3	Slot 2 . . . . .	16
<b>A</b>	<b>Summary</b>	<b>17</b>
A.1	Status . . . . .	17
A.2	Comments . . . . .	17

# 1 Front

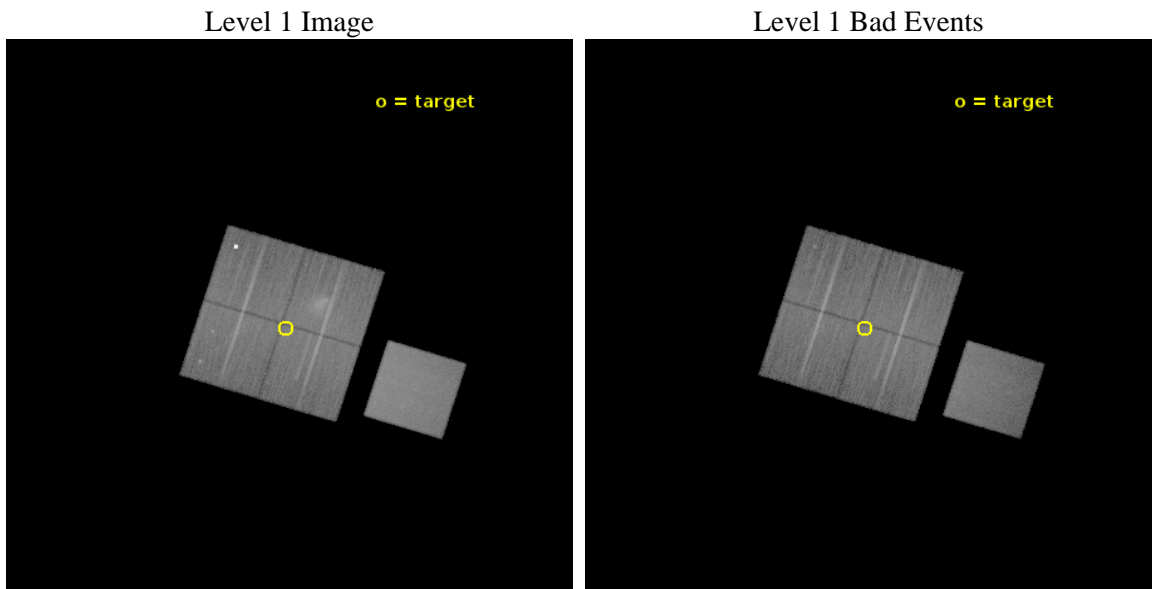
seq_num	801381	Sequence number
obs_id	16127	Observation id
title	SNAPSHOTS IN THE HISTORY OF DISSOCIATIVE MAJOR MERGERS	Proposal ti
observer	Dr Florian Pacaud	Principal investigator
object	Abell S0295	Source name
dtcycle	0	&#160
cycle	P	events from which exps? Prim/Second/Both
ra_targ	41.47	Observer's specified target RA [deg]
dec_targ	-53.08	Observer's specified target Dec [deg]
ra_nom	41.462239554588	Nominal RA [deg]
dec_nom	-53.073275412785	Nominal Dec [deg]
roll_nom	107.35186655708	Nominal Roll [deg]
revision	1	Processing version of data
ontime	43894.852827668	Sum of GTIs [s]
livetime	43321.334260554	Livetime [s]
ontime0	43894.729707658	Sum of GTIs [s]
ontime1	43888.48871702	Sum of GTIs [s]
ontime2	43891.670807302	Sum of GTIs [s]
ontime3	43894.852827668	Sum of GTIs [s]
ontime7	43894.893867671	Sum of GTIs [s]
l2events	227834	Number of level 2 events



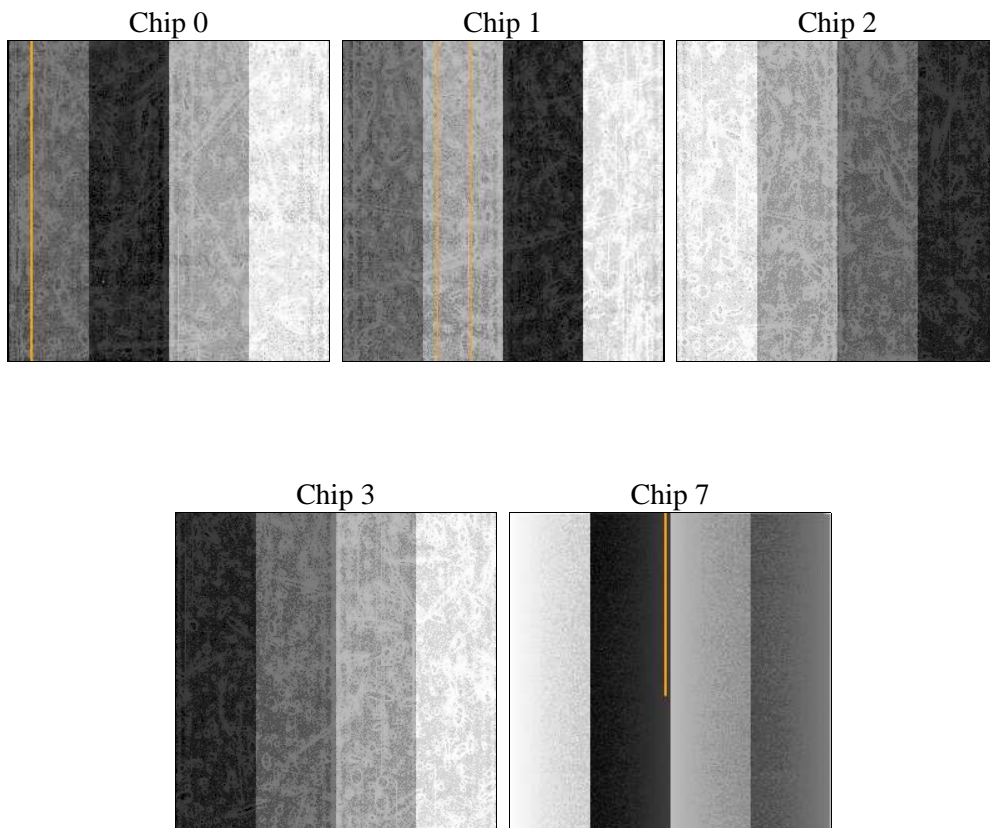
## 2 OBI

### 2.1 OBI

#### 2.1.1 Images



#### 2.1.2 Bias



### 2.1.3 Parameters

obi_num	0	Obi number	sched_exp_time	43825.936000	[s] Scheduled observation exposure time
ascdsver	10.2.4	Processing system revision	ontime	43894.852827668	Sum of GTIs [s]
caldbver	4.6.2	&#160	ontime0	43894.729707658	Sum of GTIs [s]
date	2014-07-26T19:18:48	Date and time of file creation	ontime1	43888.48871702	Sum of GTIs [s]
revision	1	Processing version of data	ontime2	43891.670807302	Sum of GTIs [s]
			ontime3	43894.852827668	Sum of GTIs [s]
			ontime7	43894.893867671	Sum of GTIs [s]
			l1events	1155136	Number of level 1 events

### 2.1.4 Events

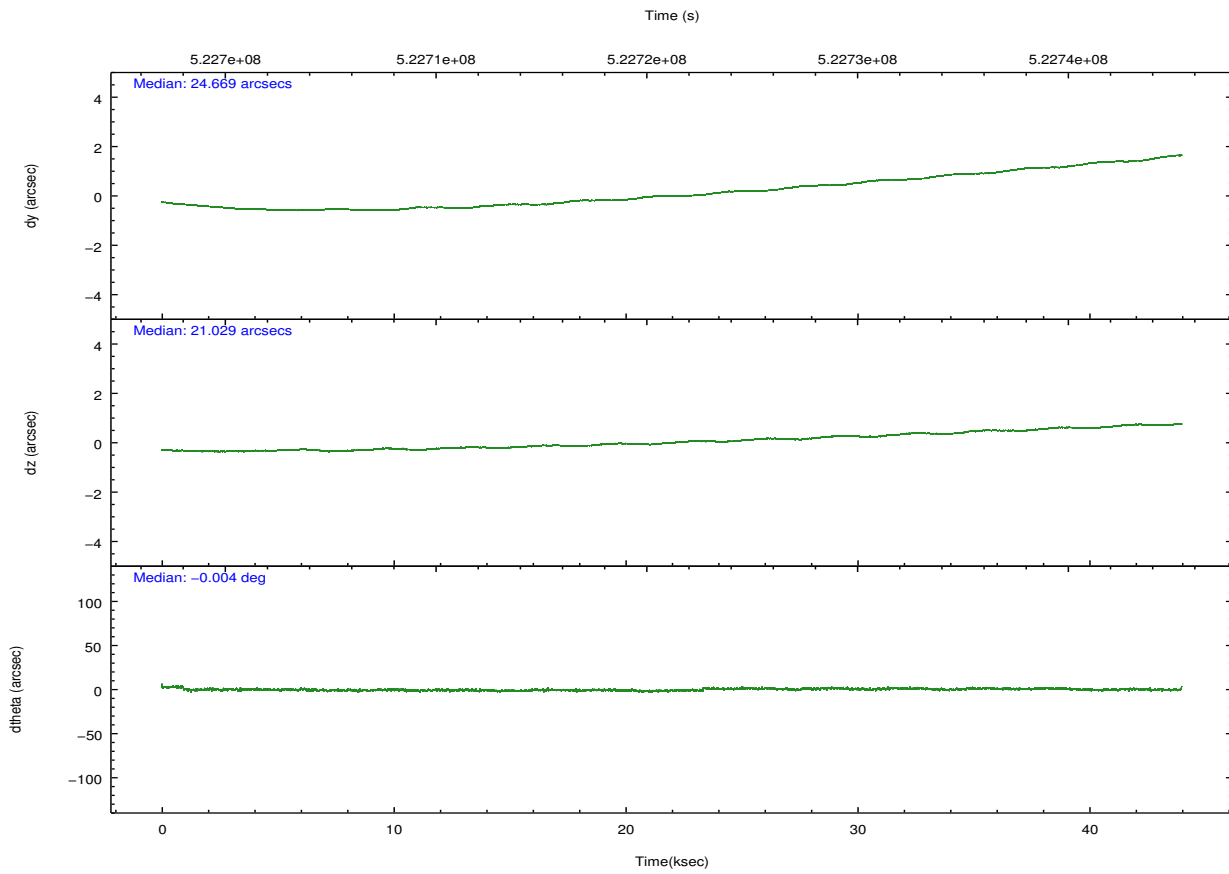
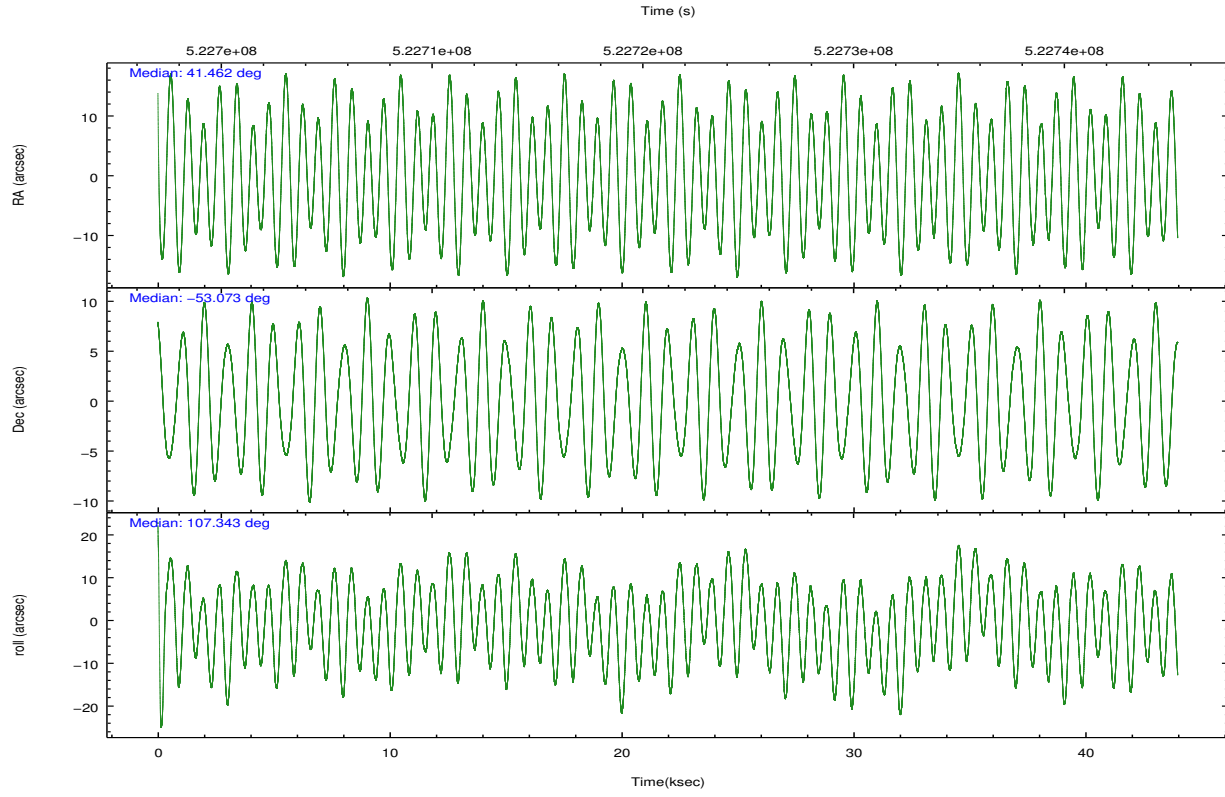
	ccd 0	ccd 1	ccd 2	ccd 3	ccd 7
level 1 events	225294	199528	229293	205968	295053
rejected events	167307	170060	186760	181596	167461
rejected %	74%	85%	81%	88%	56%

	ccd 0	ccd 1	ccd 2	ccd 3	ccd 7
grade 0 events	27927	10831	23494	8550	11154
	12%	5%	10%	4%	3%
grade 1 events	189	109	211	124	353
	0%	0%	0%	0%	0%
grade 2 events	19843	7016	7779	5479	26131
	8%	3%	3%	2%	8%
grade 3 events	2667	2732	2945	2652	10961
	1%	1%	1%	1%	3%
grade 4 events	2451	2758	3064	2601	10747
	1%	1%	1%	1%	3%
grade 5 events	10109	10878	9563	11584	30291
	4%	5%	4%	5%	10%
grade 6 events	5101	6131	5255	5093	68608
	2%	3%	2%	2%	23%
grade 7 events	157007	159073	176982	169885	136808
	69%	79%	77%	82%	46%

## 2.2 Compared Parameters

Parameter	Planned	Actual	Parameter	Planned	Actual
Instrument	ACIS	ACIS	Obspar format version number	7	7
Detector	ACIS-01237	ACIS-01237	Obspar file type	PREDICTED	ACTUAL
Grating	NONE	NONE	Obspar update status	NONE	UPDATED
Data mode	VFAINT	VFAINT	Number of optional ACIS chips dropped	0	0
Observation mode	POINTING	POINTING	On-chip summing requested	N	N
[deg] Pointing RA	41.496158	41.46223955458757	Subarray requested	NONE	NONE
[deg] Pointing Dec	-53.091902	-53.07327541278529	Alternating exposures requested	N	N
[deg] Pointing Roll	107.170293	107.3518665570832	[s] Primary exposure time	0.000000	3.1
[mm] SIM focus pos	-0.782348	-0.7809083437167272			
[mm] SIM defocus	0	0.001439871863259334			
[mm] SIM translation stage pos	-233.592463	-233.5874344608287			
[mm] SIM translation stage offset	0	-0.005018542100998502			
[s] Observation start time (MET)	522699330.184000	522697957.02459			
Observation start date	2014-07-25T18:14:23	2014-07-25T17:52:37			
[s] Observation end time (MET)	522743155.184000	522743392.2021			
Observation end date	2014-07-26T06:24:48	2014-07-26T06:29:52			
Read mode	TIMED	TIMED			

## 2.3 Aspect

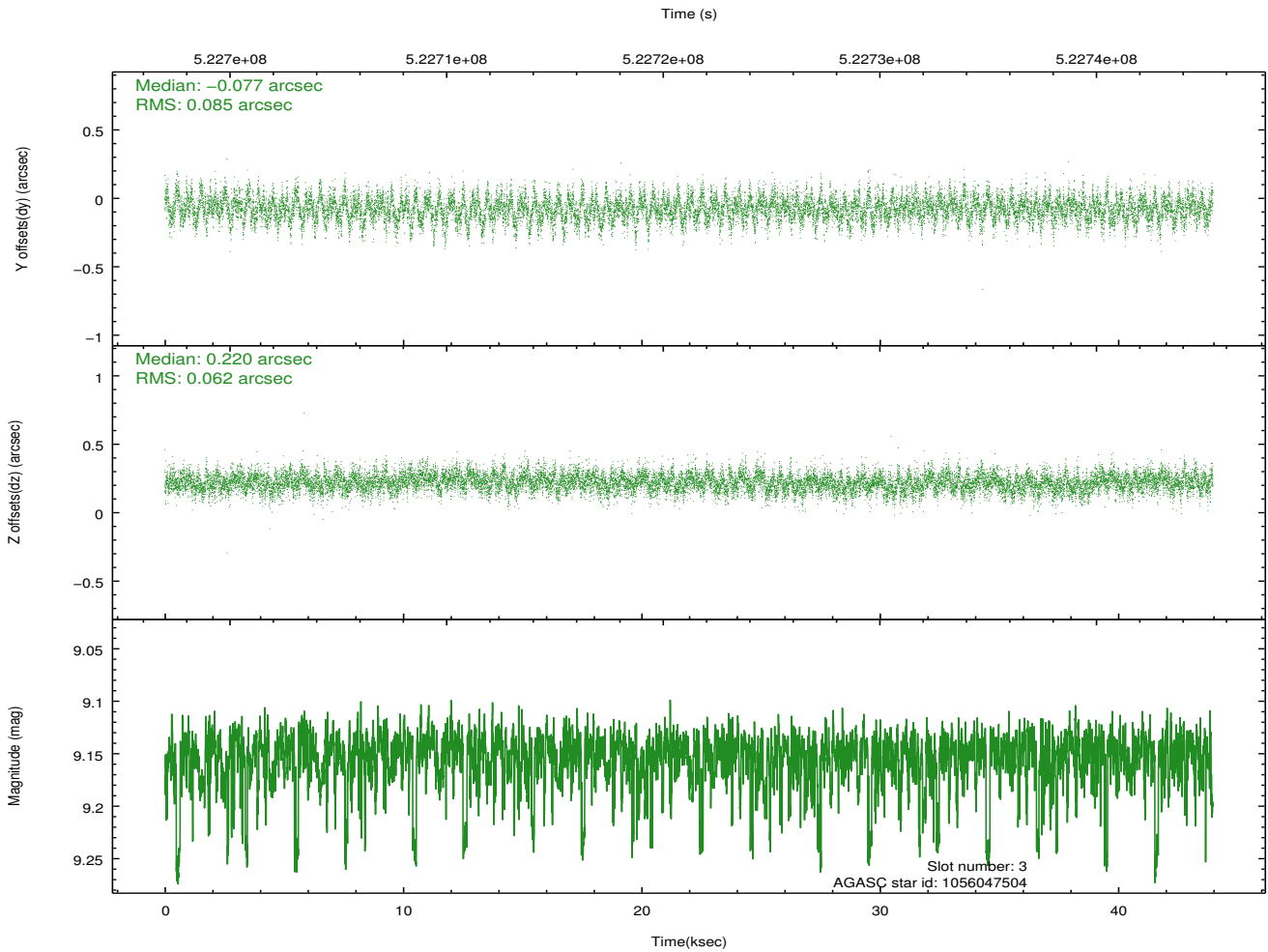
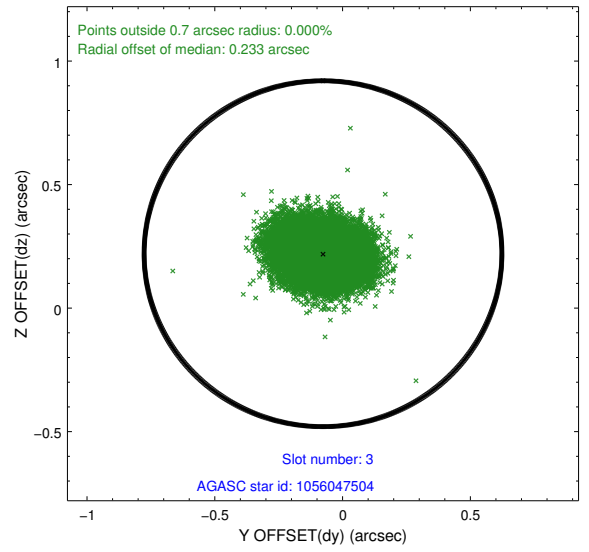
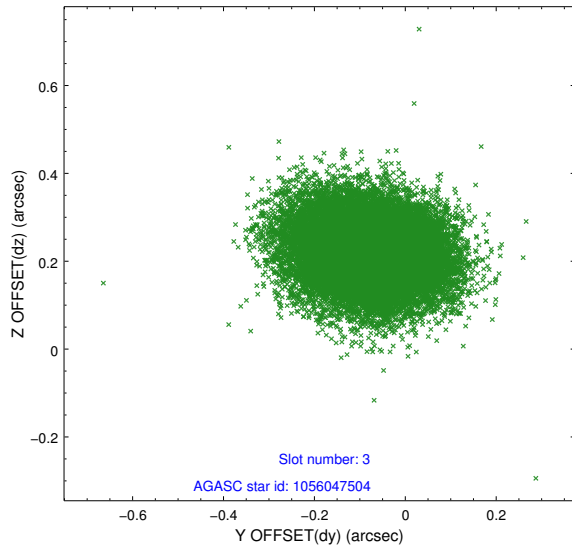


### Slot Statistics

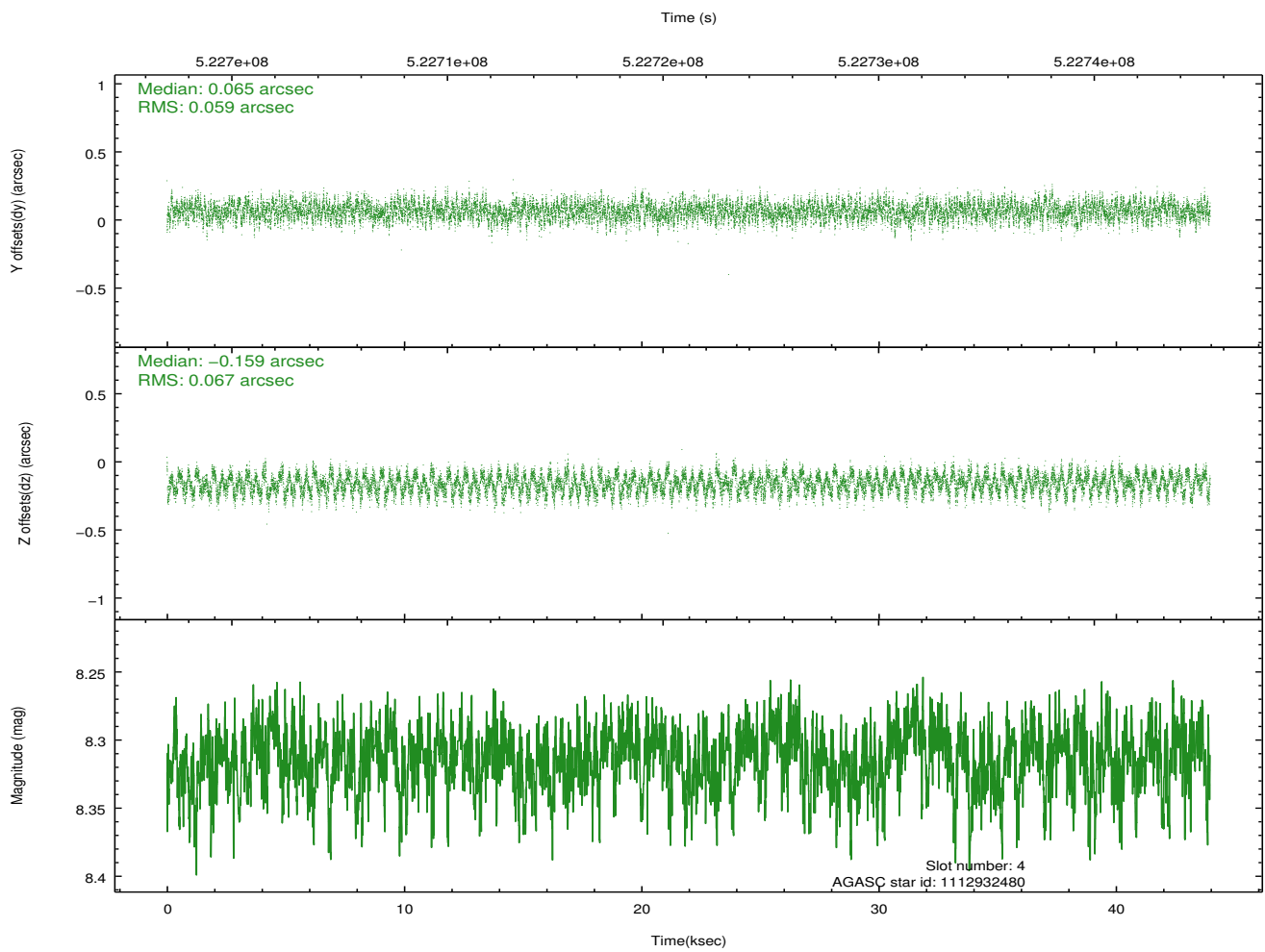
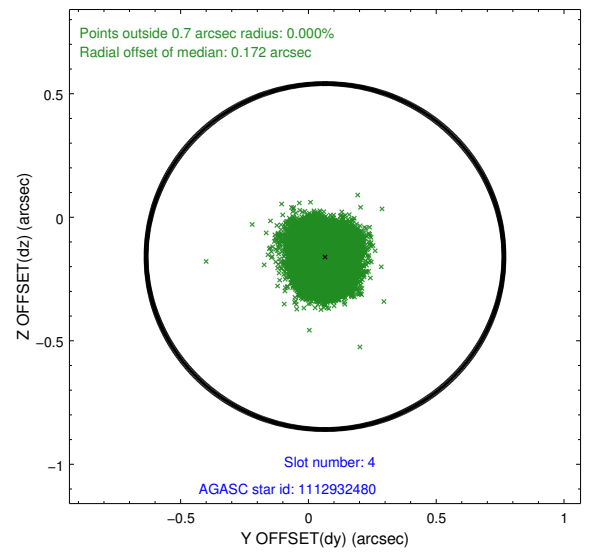
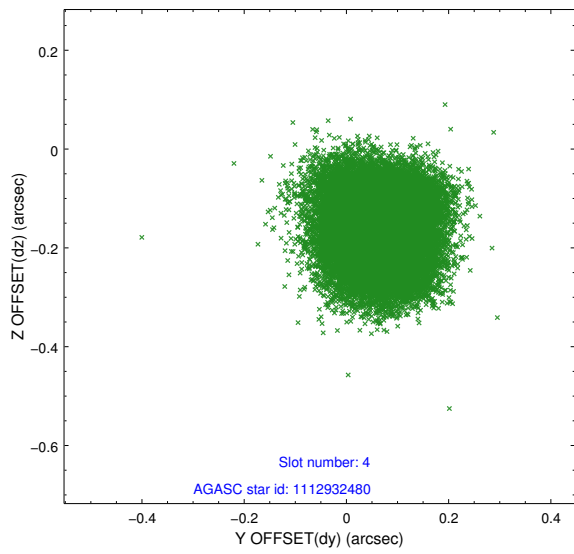
slot	status	id	mag	n_pts	med_dy	med_dz	dr1	dr2	ra	dec	mean_y	mean_z
0	FID	ACIS-I-2	7.04	10725	-0.183	-0.117	0.013	0.022	0.000000	0.000000	-780.00	-851.36
1	FID	ACIS-I-4	7.08	10724	0.370	0.131	0.012	0.020	0.000000	0.000000	2134.56	1055.13
2	FID	ACIS-I-5	7.13	10724	-0.287	0.056	0.013	0.020	0.000000	0.000000	-1833.98	1052.81
3	GUIDE	1056047504	9.15	21427	-0.077	0.220	0.110	0.186	41.496916	-52.433184	2265.65	-701.77
4	GUIDE	1112932480	8.31	21449	0.065	-0.159	0.097	0.149	41.121788	-52.787610	1285.50	456.18
5	GUIDE	1112933704	9.61	21427	0.458	0.225	0.137	0.224	41.378920	-53.359907	-847.24	525.28
6	GUIDE	1112937160	7.87	21444	-0.134	-0.178	0.090	0.139	40.691929	-52.972857	914.22	1542.03
7	GUIDE	1112943208	7.95	21448	-0.310	-0.109	0.077	0.124	40.899521	-52.856390	1187.61	990.59

## 2.4 Star Slots

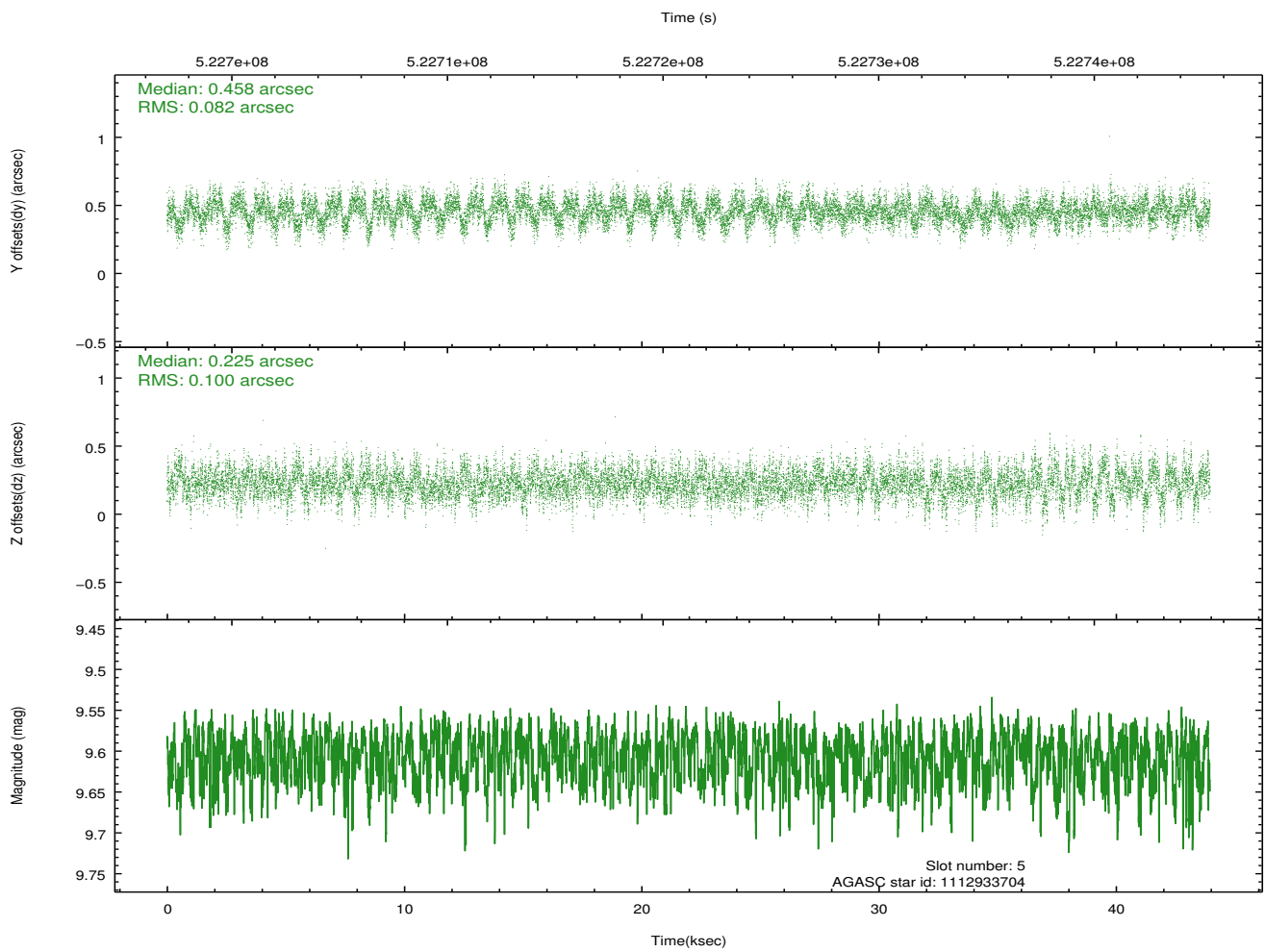
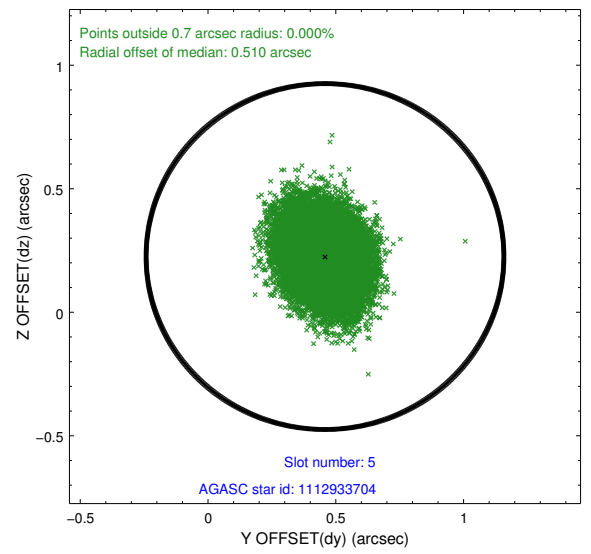
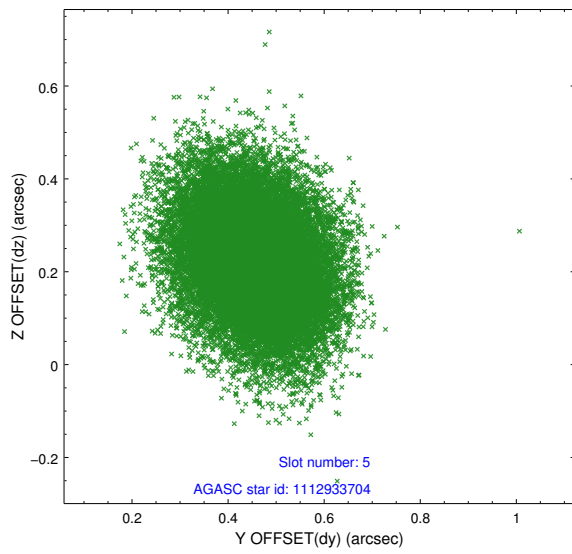
### 2.4.1 Slot 3



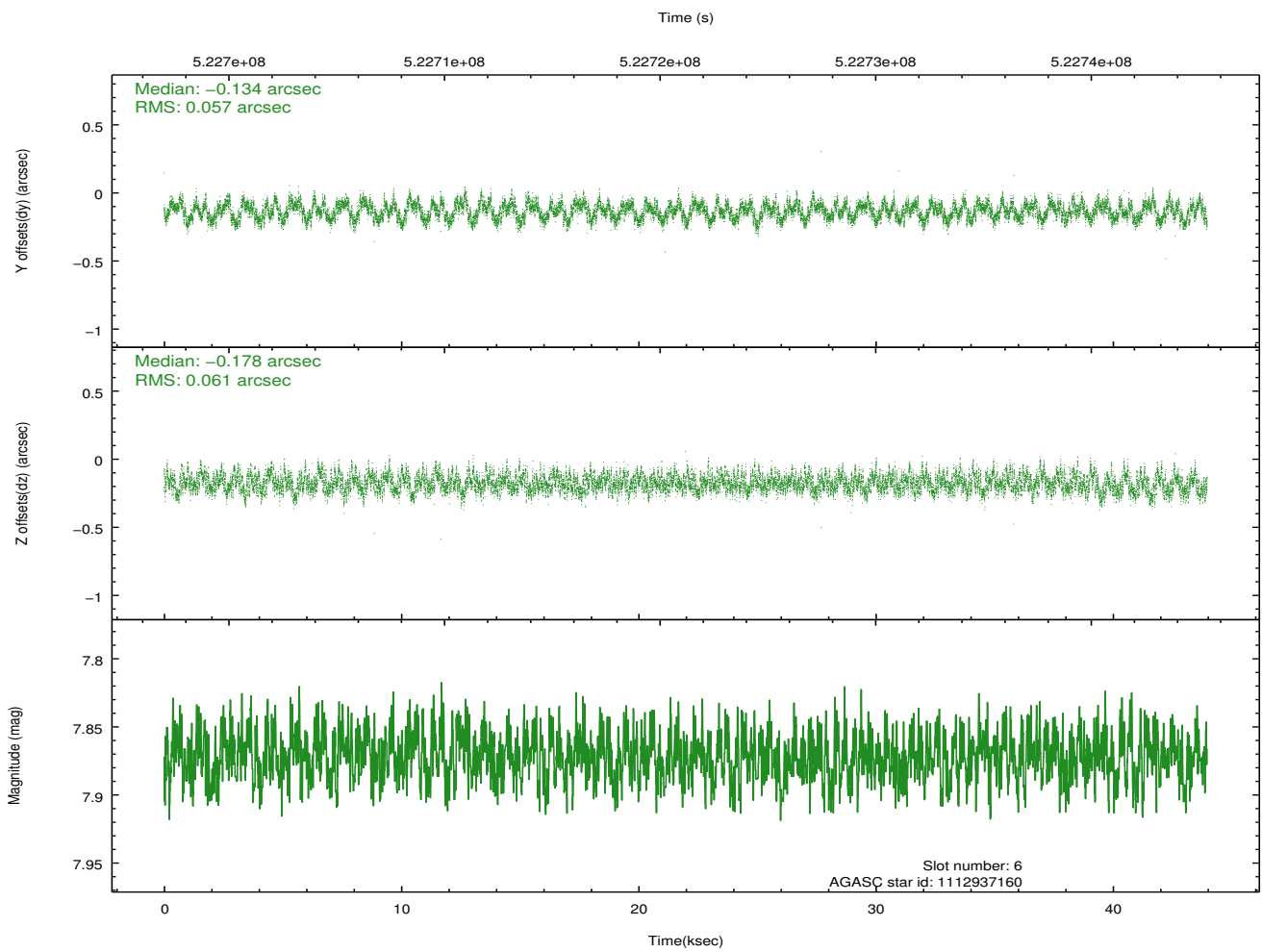
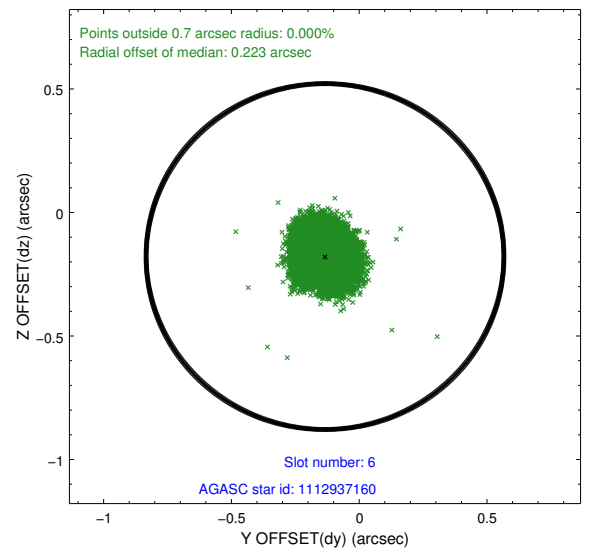
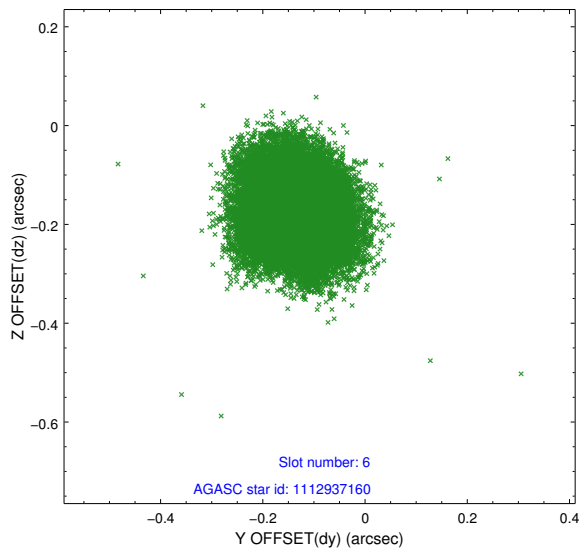
## 2.4.2 Slot 4



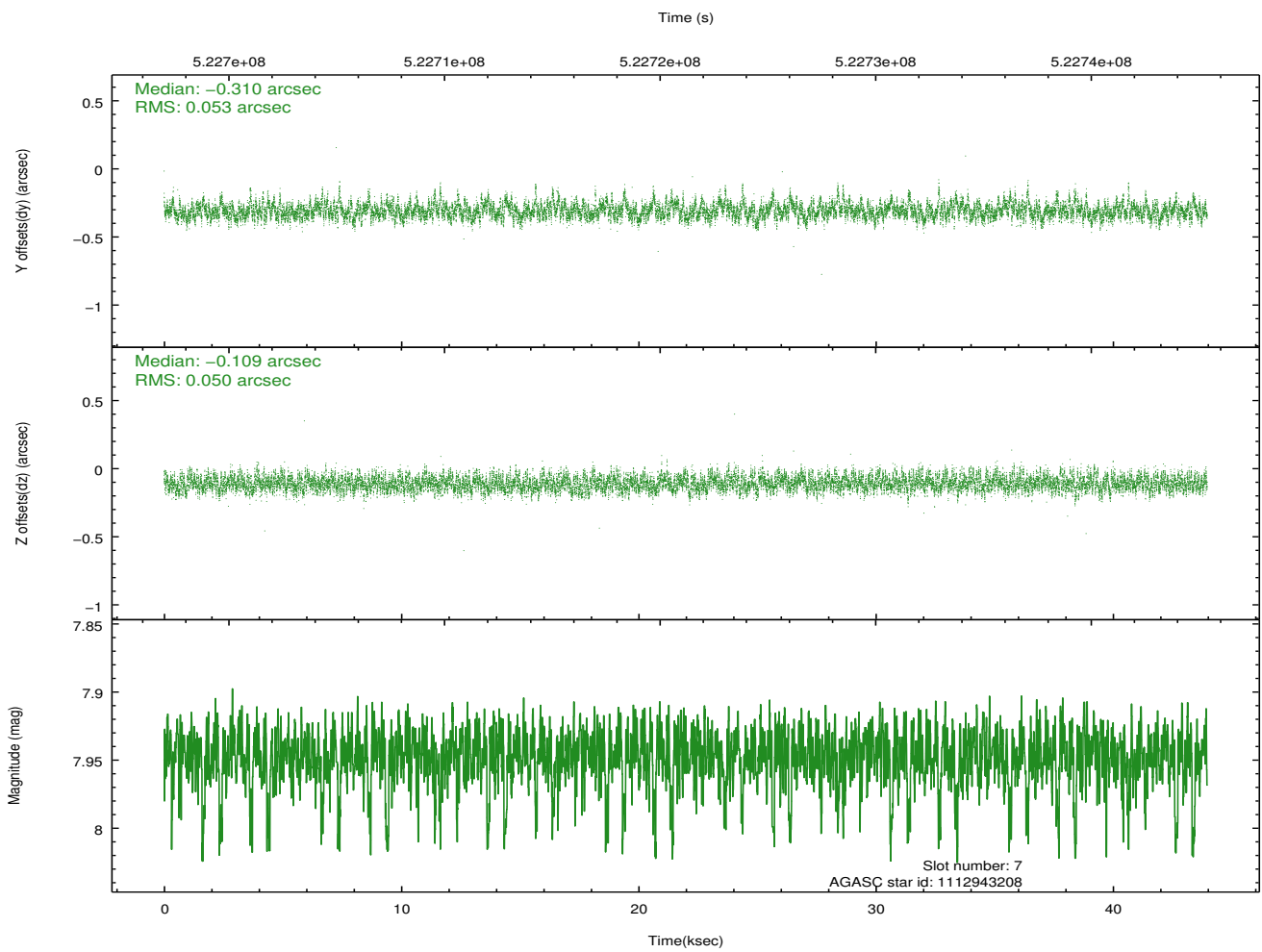
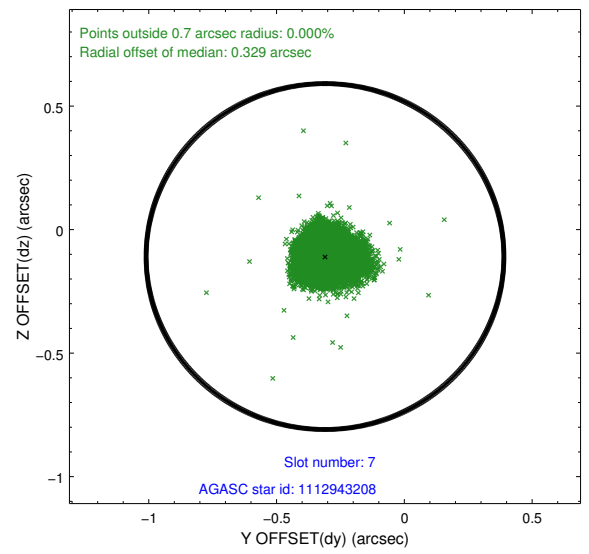
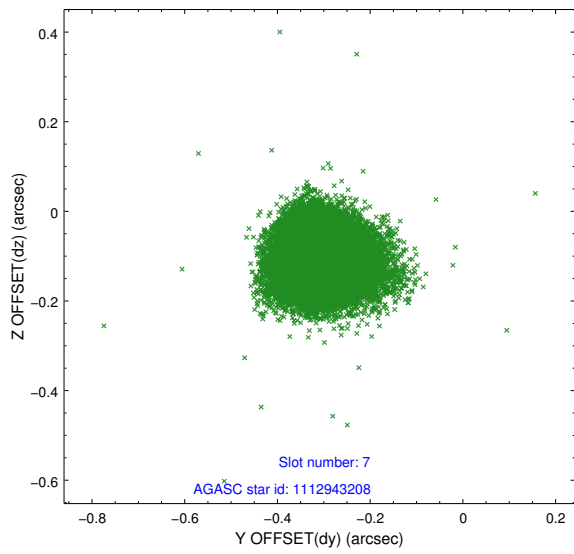
### 2.4.3 Slot 5



## 2.4.4 Slot 6

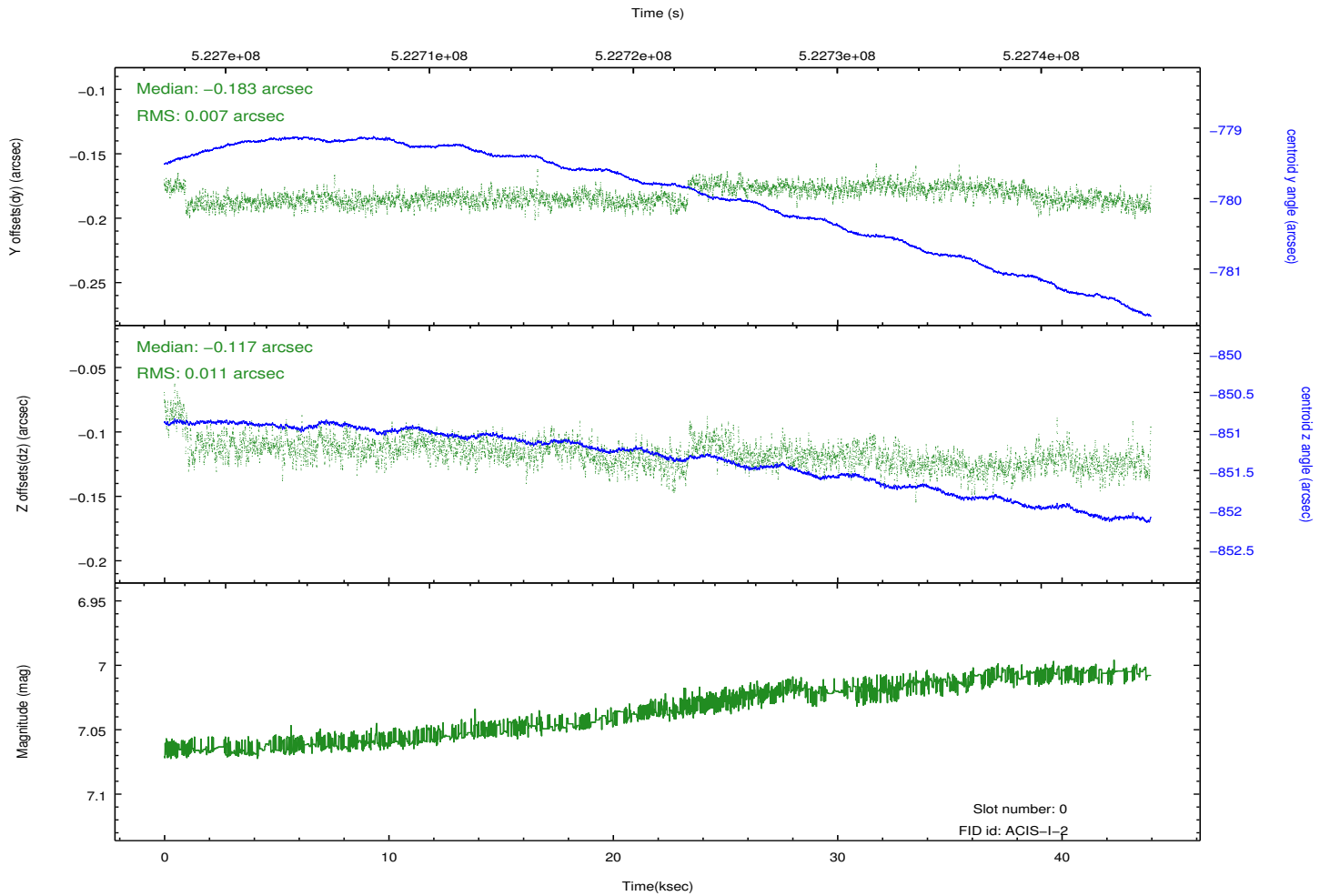
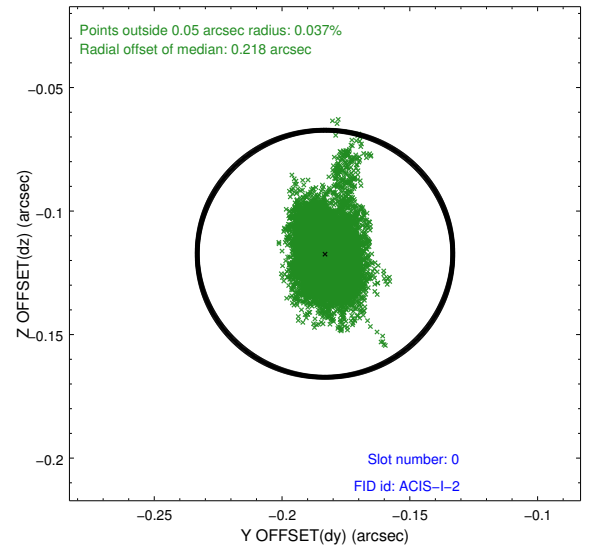
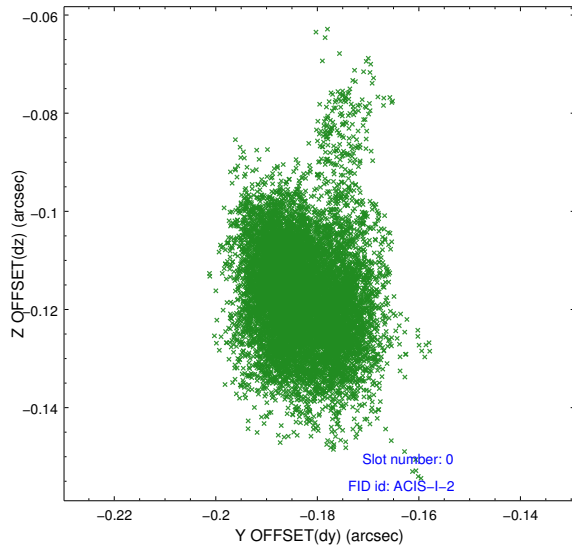


## 2.4.5 Slot 7

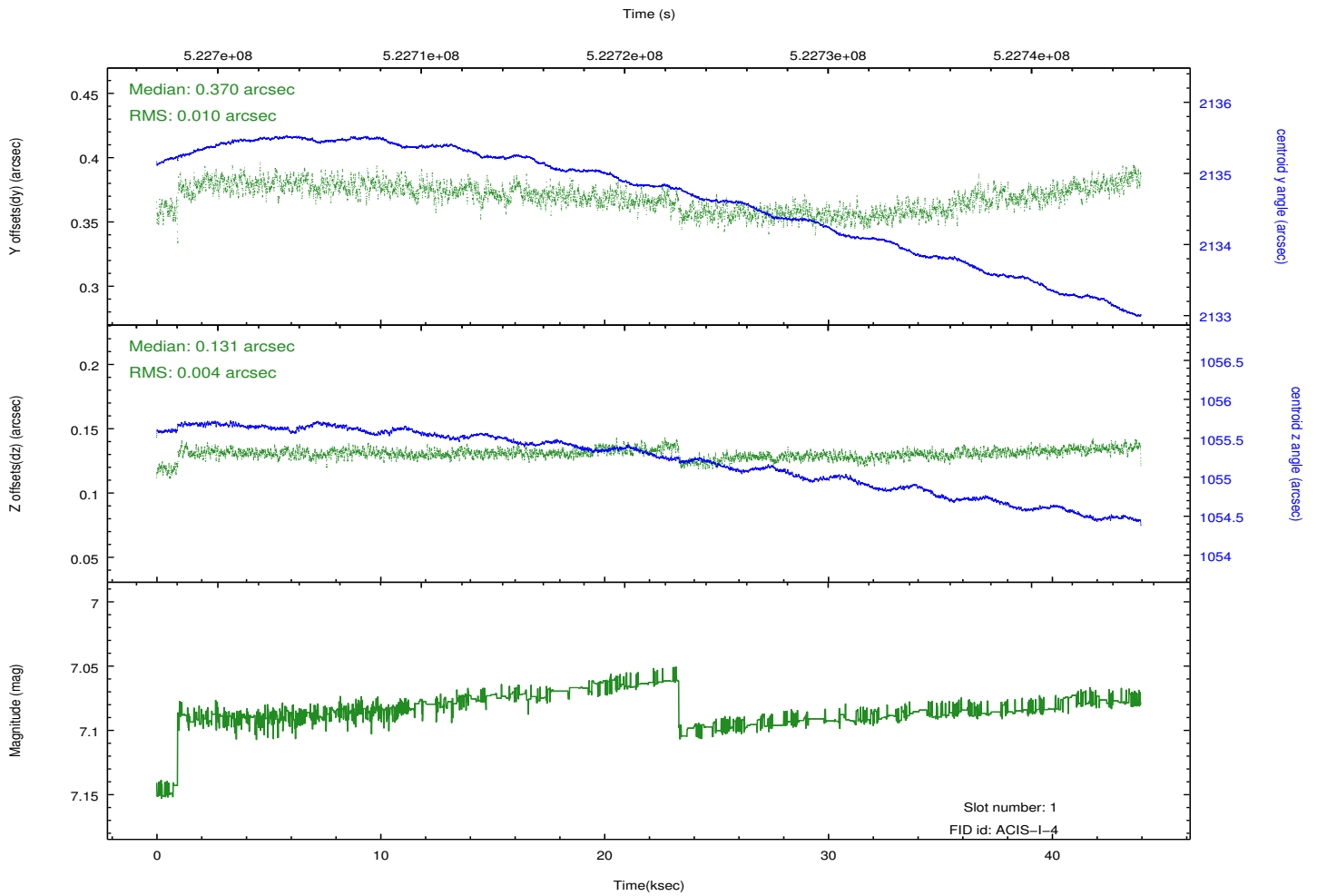
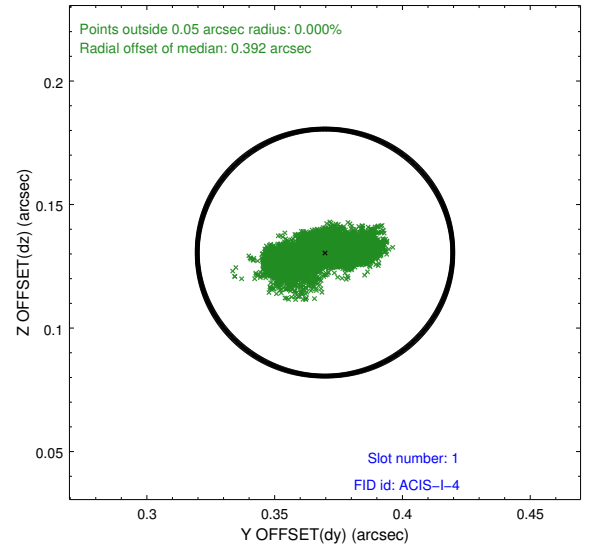
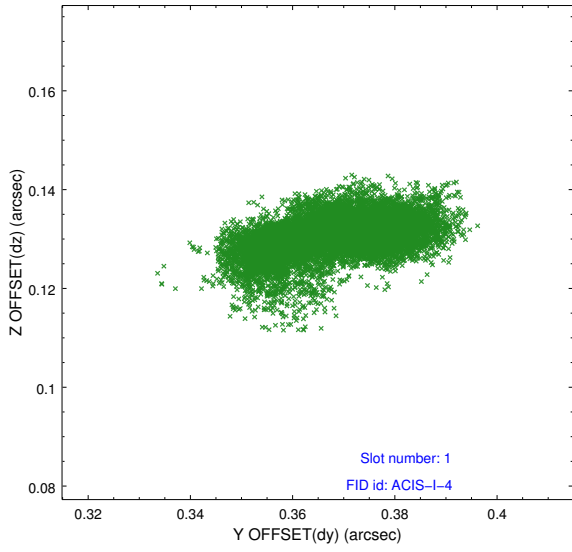


## 2.5 FID Slots

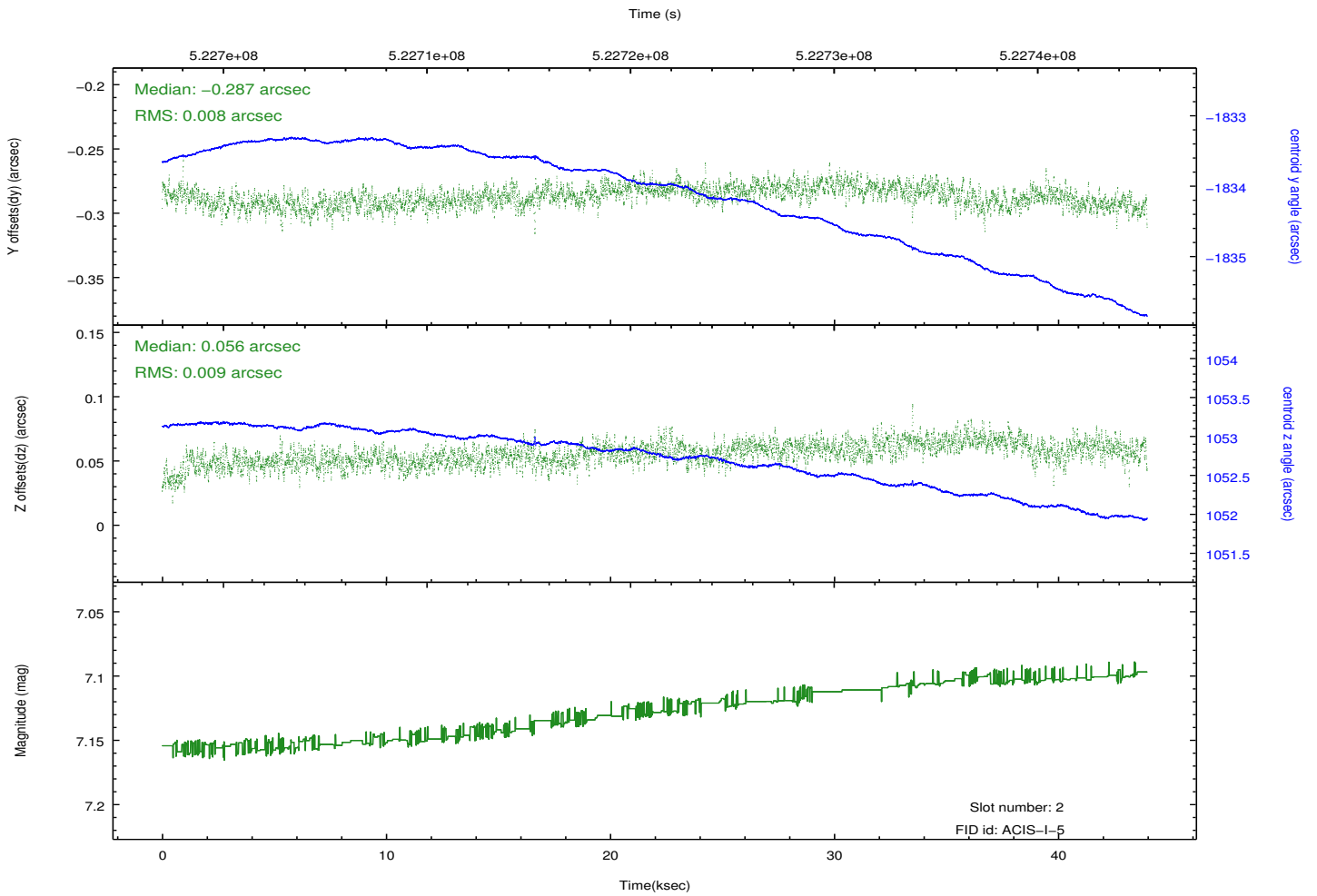
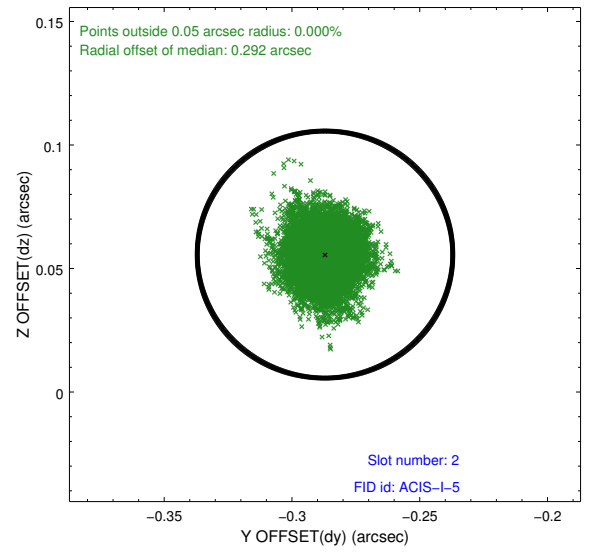
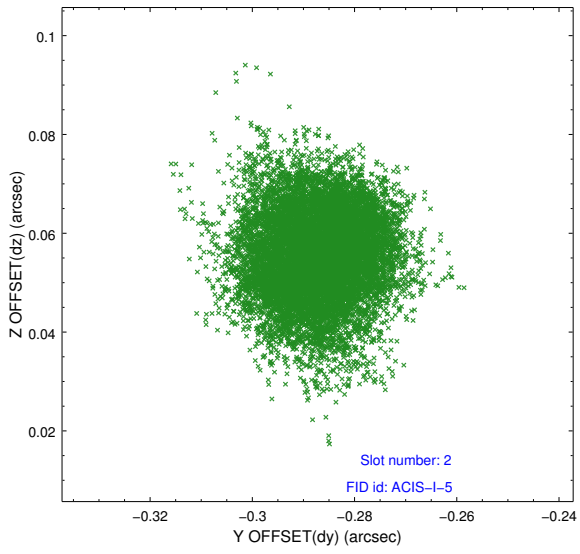
### 2.5.1 Slot 0



## 2.5.2 Slot 1



### 2.5.3 Slot 2



# A Summary

## A.1 Status

V&V Scientist	Joy Nichols
V&V Date (YYYY-MM-DD)	2014.07.28
V&V Edition	1
V&V Disposition and Status	OK
V&V Charge Time	43.894852827668

## A.2 Comments

Target coordinates have been modified to effect the placement of the source near the center of CCD chip 2.

The target coordinates in the header are not the published coordinates of this object. However, the aspect solution is correct and sky coordinates in the processed data products are correct.