

V&V Reference Report

L2 ASCDS Version : 8.4.5

Observation 1627 - L2 Version 3
Chandra X-Ray Center

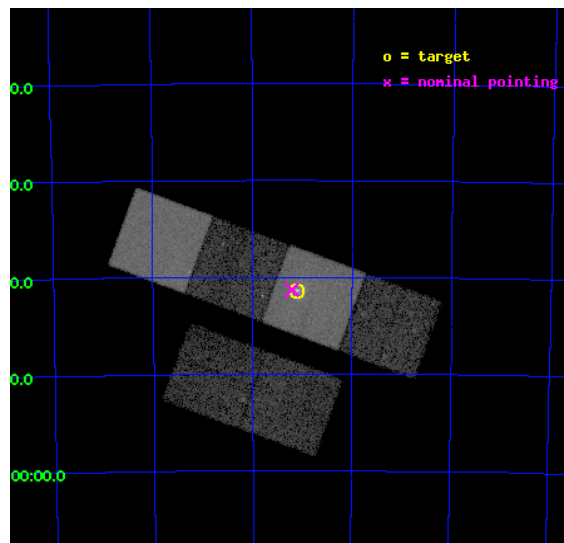
L2 Processing Date : Sep 21 2012

Contents

1	Front	2
2	OBI	3
2.1	OBI	3
2.1.1	Images	3
2.1.2	Bias	3
2.1.3	Parameters	4
2.1.4	Events	4
2.2	Compared Parameters	5
2.3	Aspect	6
2.4	Star Slots	9
2.4.1	Slot 3	9
2.4.2	Slot 4	10
2.4.3	Slot 5	11
2.4.4	Slot 6	12
2.4.5	Slot 7	13
2.5	FID Slots	14
2.5.1	Slot 0	14
2.5.2	Slot 1	15
2.5.3	Slot 2	16
A	Summary	17
A.1	Status	17
A.2	Comments	17

1 Front

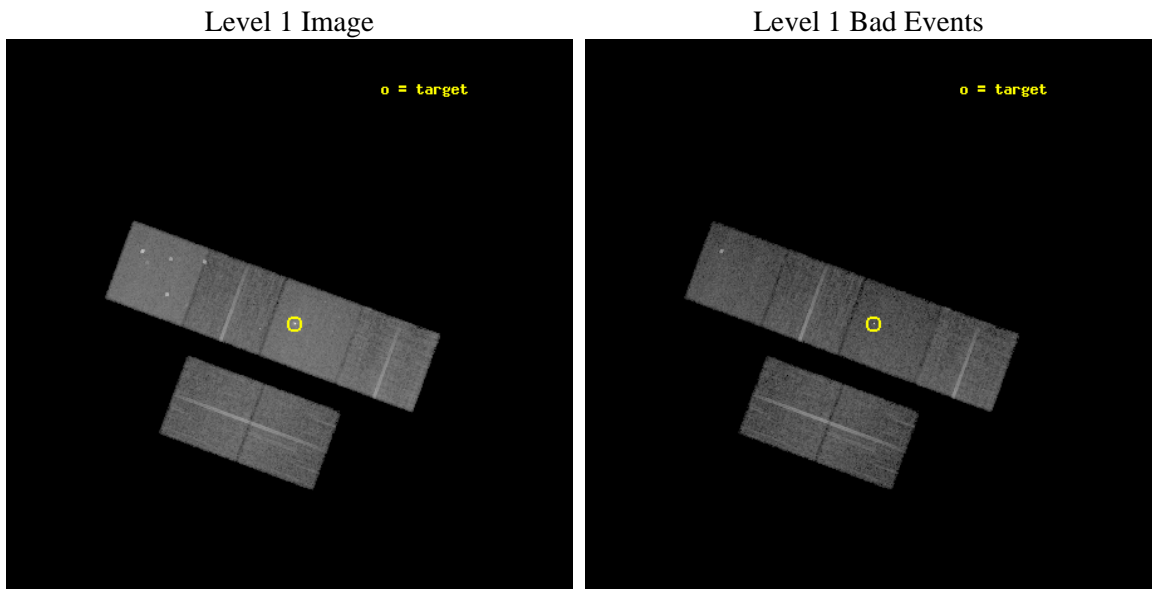
seq_num	700243	Sequence number
obs_id	1627	Observation id
title	STUDIES OF RADIO JETS AND THE NARROW LINE REGIONS OF ACTIVE GALAXIES	
observer	Professor Andrew Wilson	Principal investigator
object	PKS 2153-69	Source name
dtcycle	0	
cycle	P	events from which exps? Prim/Second/Both
ra_targ	329.275	Observer's specified target RA [deg]
dec_targ	-69.689917	Observer's specified target Dec [deg]
ra_nom	329.30258373755	Nominal RA [deg]
dec_nom	-69.688233094396	Nominal Dec [deg]
roll_nom	20.156453942963	Nominal Roll [deg]
revision	3	Processing version of data
ontime	13948.45330511	Sum of GTIs [s]
livetime	13771.829590611	Livetime [s]
ontime2	13948.494345114	Sum of GTIs [s]
ontime3	13948.330185115	Sum of GTIs [s]
ontime5	13948.412265107	Sum of GTIs [s]
ontime6	13948.371225119	Sum of GTIs [s]
ontime7	13948.45330511	Sum of GTIs [s]
ontime8	13948.289145112	Sum of GTIs [s]
l2events	160354	Number of level 2 events



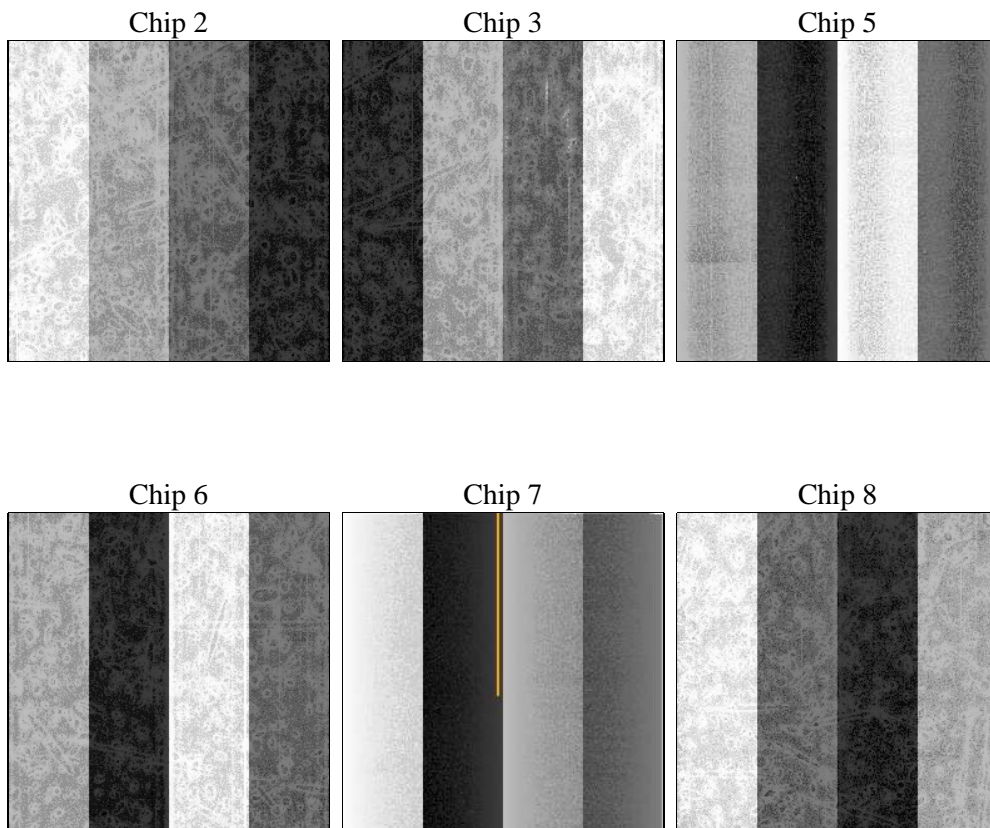
2 OBI

2.1 OBI

2.1.1 Images



2.1.2 Bias



2.1.3 Parameters

obi_num	0	Obi number	sched_exp_time	14000.000000	[s] Scheduled observation exposure time
ascdsver	8.4.5	Processing system revision	ontime	13948.45330511	Sum of GTIs [s]
caldbver	4.5.1.1	 	ontime2	13948.494345114	Sum of GTIs [s]
date	2012-09-21T10:34:09	Date and time of file creation	ontime3	13948.330185115	Sum of GTIs [s]
revision	3	Processing version of data	ontime5	13948.412265107	Sum of GTIs [s]
			ontime6	13948.371225119	Sum of GTIs [s]
			ontime7	13948.45330511	Sum of GTIs [s]
			ontime8	13948.289145112	Sum of GTIs [s]
			l1events	665189	Number of level 1 events

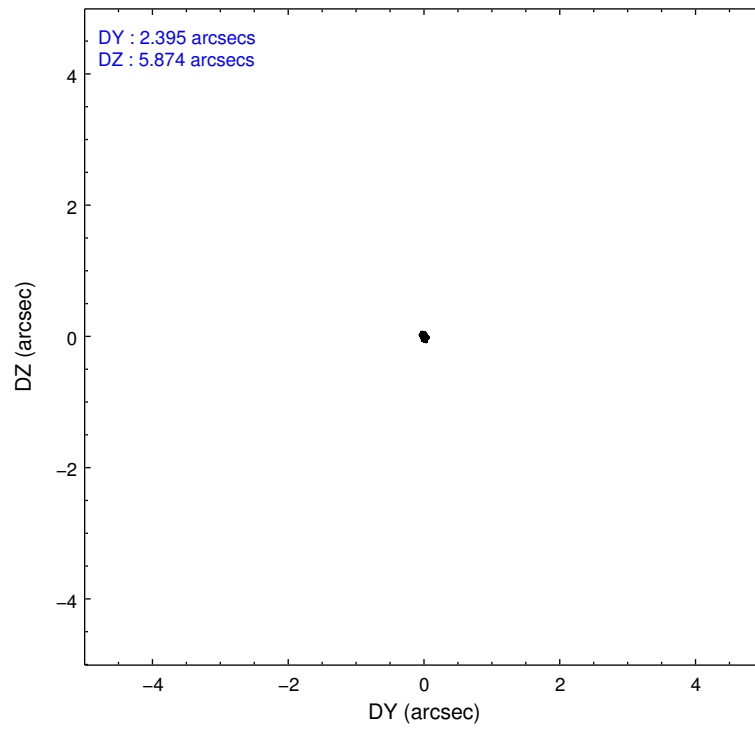
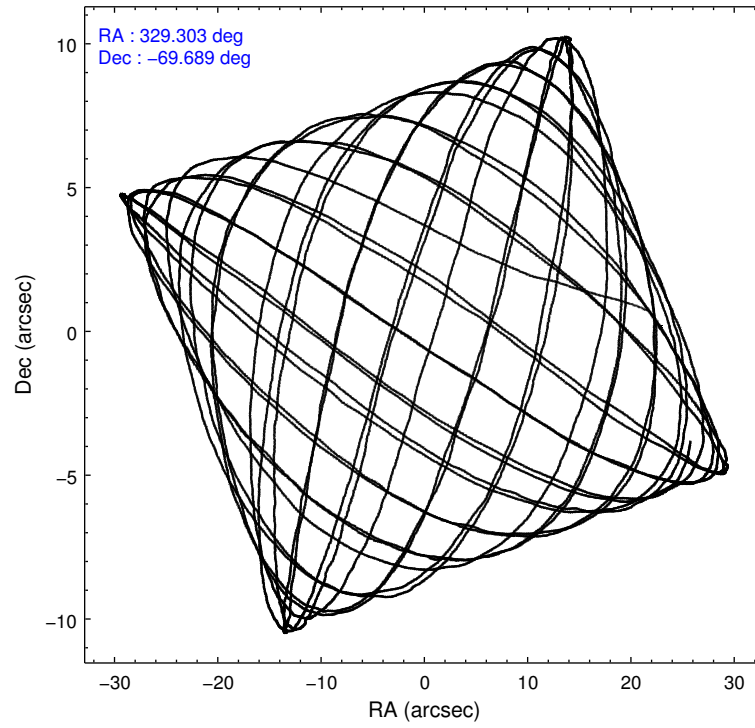
2.1.4 Events

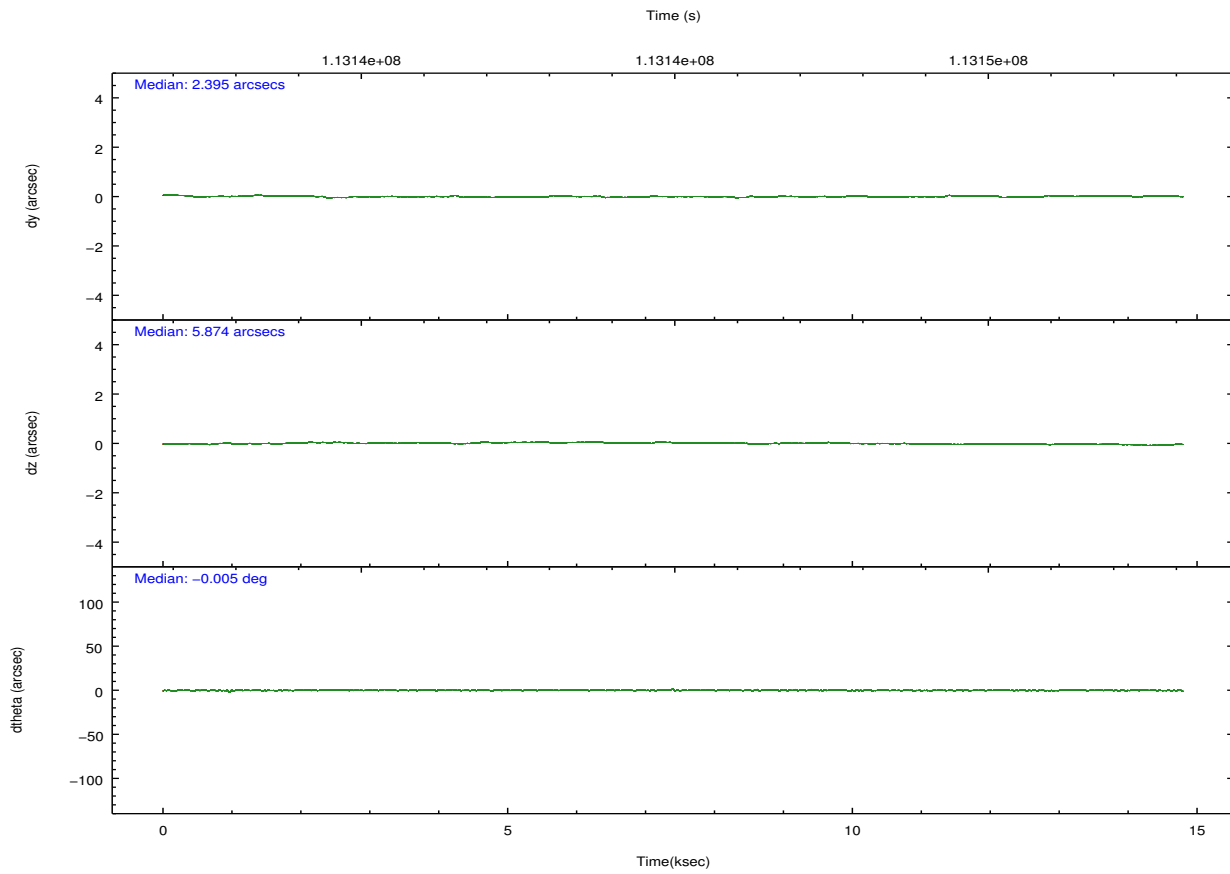
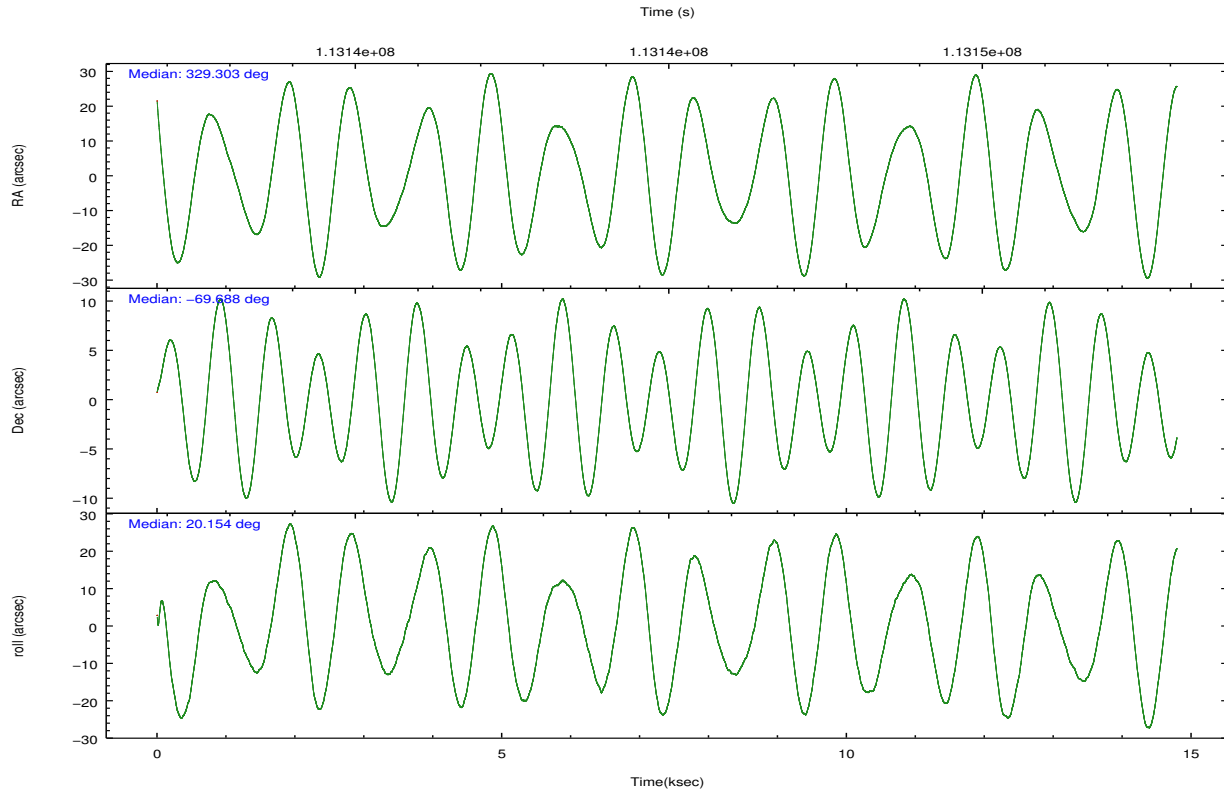
	ccd 2	ccd 3	ccd 5	ccd 6	ccd 7	ccd 8		ccd 2	ccd 3	ccd 5	ccd 6	ccd 7	ccd 8
level 1 events	93561	89762	138892	92552	134678	115744	grade 0 events	4330	4699	10991	5463	8419	7830
rejected events	83014	79063	71054	80505	71380	92564		4%	5%	7%	5%	6%	6%
rejected %	88%	88%	51%	86%	53%	79%	grade 1 events	40	46	948	46	248	55
								0%	0%	0%	0%	0%	0%
							grade 2 events	2355	2203	19237	2352	12716	4899
								2%	2%	13%	2%	9%	4%
							grade 3 events	951	980	2940	1104	5859	2409
								1%	1%	2%	1%	4%	2%
							grade 4 events	1039	974	2818	1041	5751	2251
								1%	1%	2%	1%	4%	1%
							grade 5 events	3151	3473	10022	4006	11909	4809
								3%	3%	7%	4%	8%	4%
							grade 6 events	1874	1846	31869	2091	30570	5792
								2%	2%	22%	2%	22%	5%
							grade 7 events	79821	75541	60067	76449	59206	87699
								85%	84%	43%	82%	43%	75%

2.2 Compared Parameters

Parameter	Planned	Actual	Parameter	Planned	Actual
Instrument	ACIS	ACIS	Obspar format version number	7	7
Detector	ACIS-235678	ACIS-235678	Obspar file type	PREDICTED	ACTUAL
Grating	NONE	NONE	Obspar update status	NONE	UPDATED
Data mode	VFAINT	VFAINT	Number of optional ACIS chips dropped	0	0
Observation mode	POINTING	POINTING	On-chip summing requested	N	N
[deg] Pointing RA	329.252938	329.30258373755	Subarray requested	NONE	NONE
[deg] Pointing Dec	-69.709355	-69.68823309439607	Alternating exposures requested	N	N
[deg] Pointing Roll	19.953280	20.15645394296332	[s] Primary exposure time	0.000000	3.2
[mm] SIM focus pos	-0.684267	-0.6828225247311905			
[mm] SIM defocus	0	0.001444936568705701			
[mm] SIM translation stage pos	-190.132523	-190.1400660498719			
[mm] SIM translation stage offset	0	0.00754346686406393			
[s] Observation start time (MET)	113138372.184000	113137115.74152			
Observation start date	2001-08-02T11:18:28	2001-08-02T10:58:35			
[s] Observation end time (MET)	113152372.184000	113153029.89214			
Observation end date	2001-08-02T15:11:48	2001-08-02T15:23:49			
Read mode	TIMED	TIMED			

2.3 Aspect





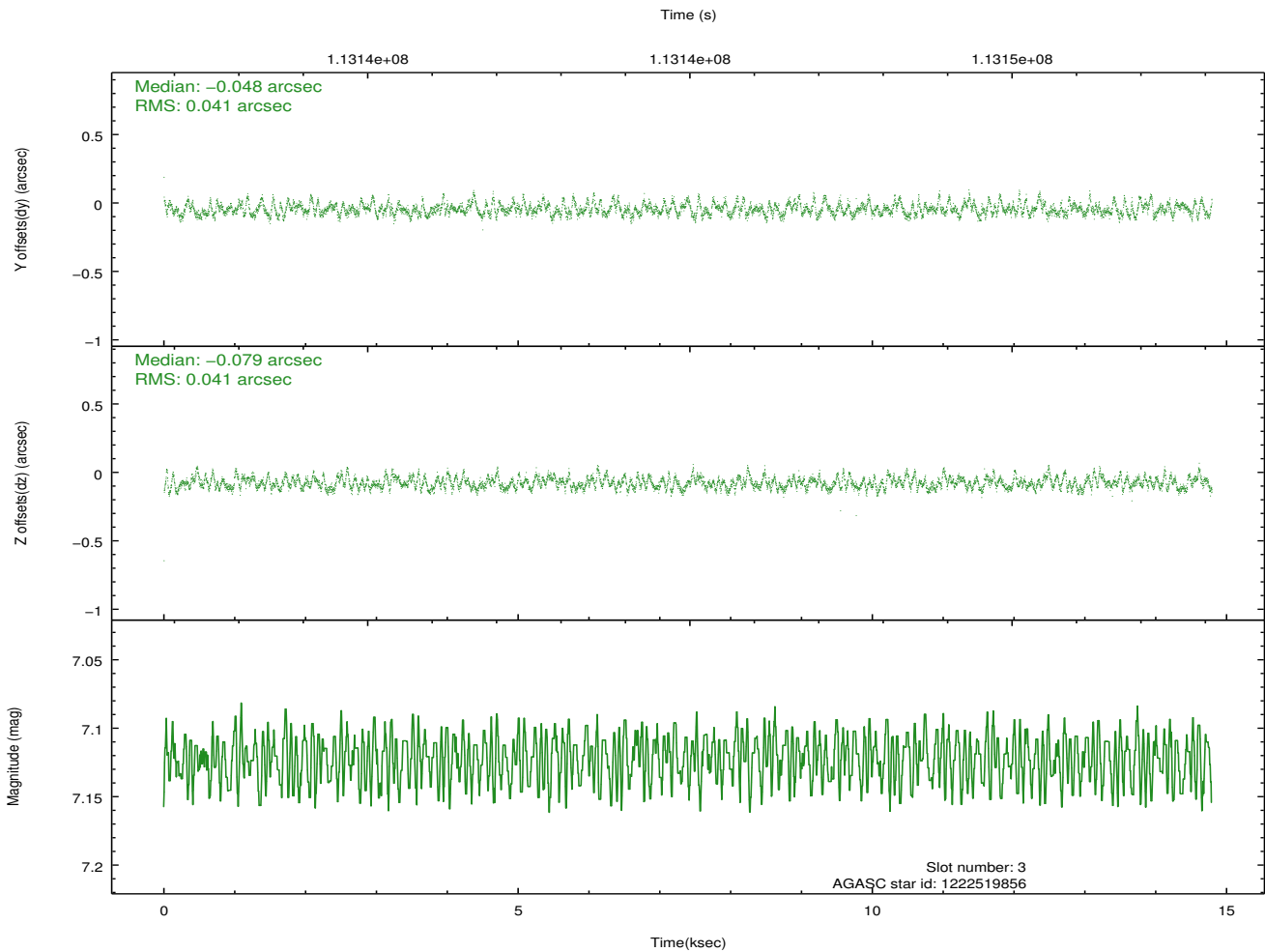
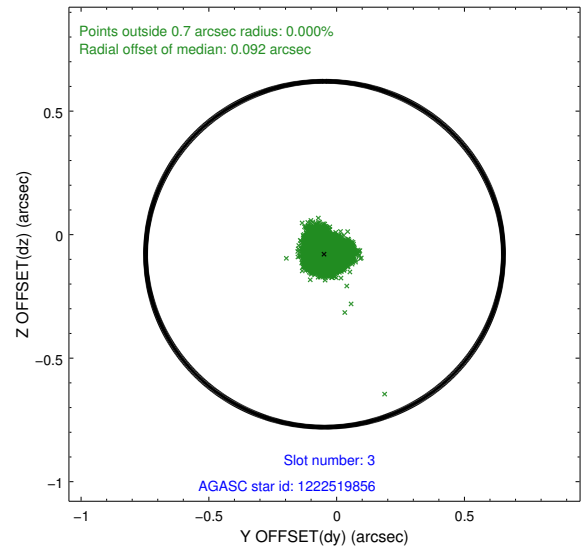
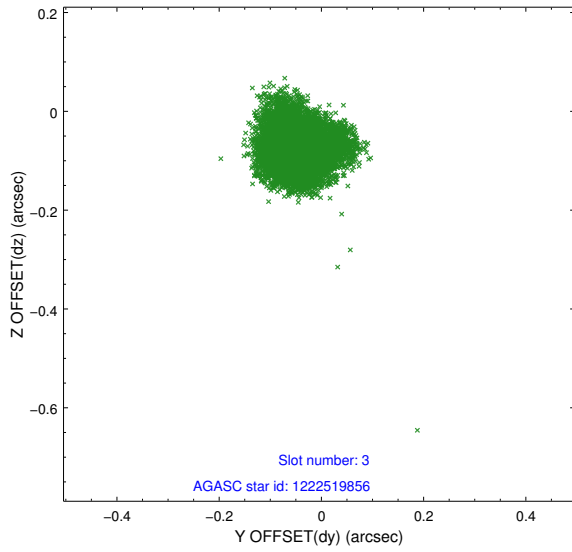
Slot Statistics

slot	status	id	mag	n_pts	med_dy	med_dz	dr1	dr2	ra	dec	mean_y	mean_z
0	FID	ACIS-S-2	7.12	3608	-0.040	-0.000	0.007	0.011	0.000000	0.000000	-755.02	-1727.03
1	FID	ACIS-S-4	7.20	3608	-0.028	0.019	0.005	0.010	0.000000	0.000000	2158.09	181.23
2	FID	ACIS-S-5	7.24	3608	0.037	-0.010	0.007	0.011	0.000000	0.000000	-1807.43	175.12
3	GUIDE	1222519856	7.12	7217	-0.048	-0.079	0.062	0.096	328.864671	-70.115366	-946.55	-1212.05
4	GUIDE	1222516160	7.93	7217	-0.111	-0.034	0.063	0.095	327.947629	-70.351694	-2280.63	-1649.56
5	GUIDE	1221993040	8.81	7212	-0.022	0.020	0.063	0.104	329.911887	-69.225732	1382.68	1346.20
6	GUIDE	1222124168	9.46	7178	0.114	0.176	0.100	0.157	330.495563	-69.004603	2366.58	1824.42
7	GUIDE	1222639984	8.86	7211	0.065	-0.083	0.061	0.100	330.310234	-69.445781	1575.85	426.52

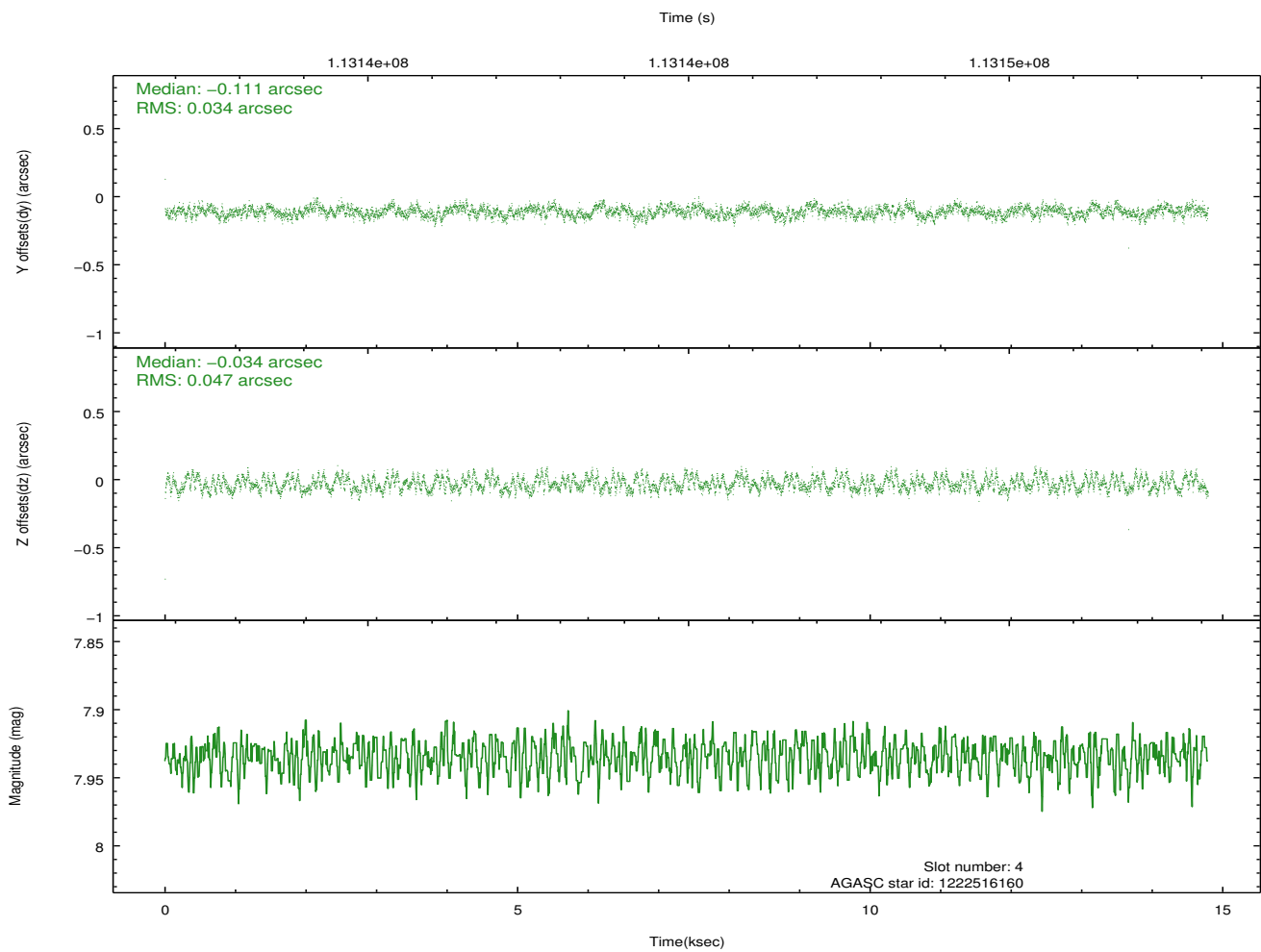
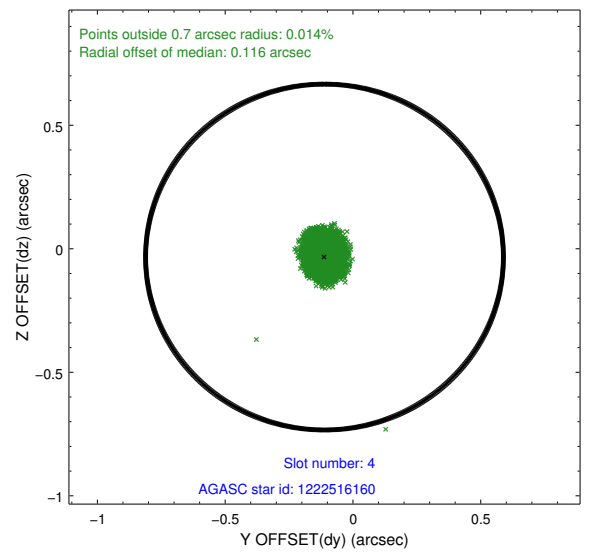
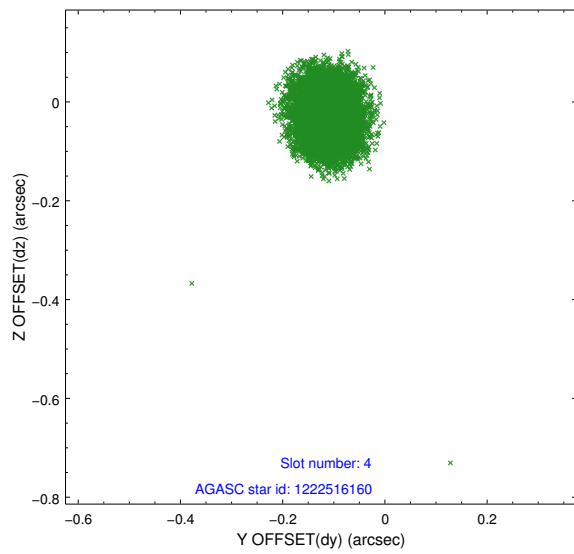
∞

2.4 Star Slots

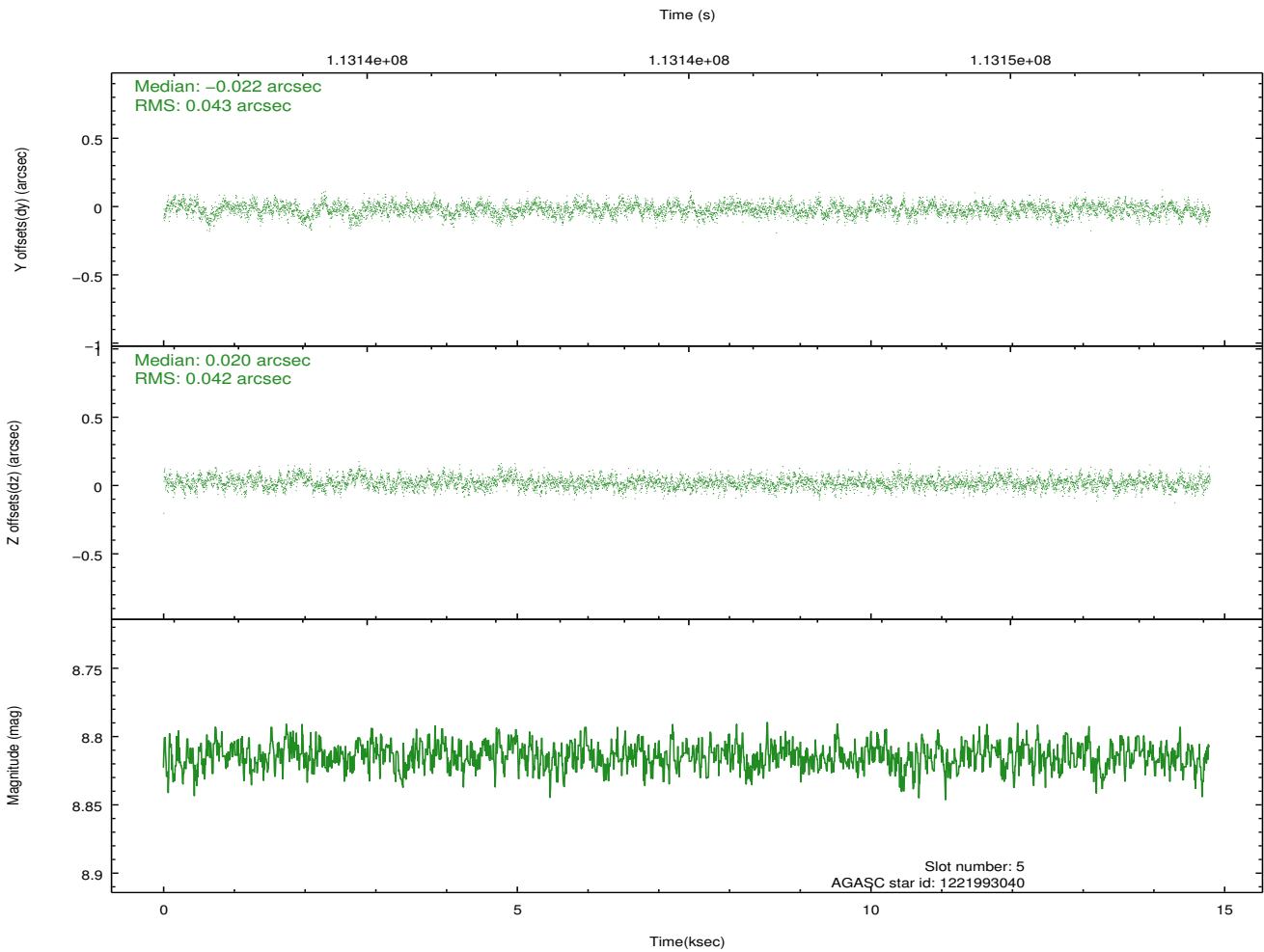
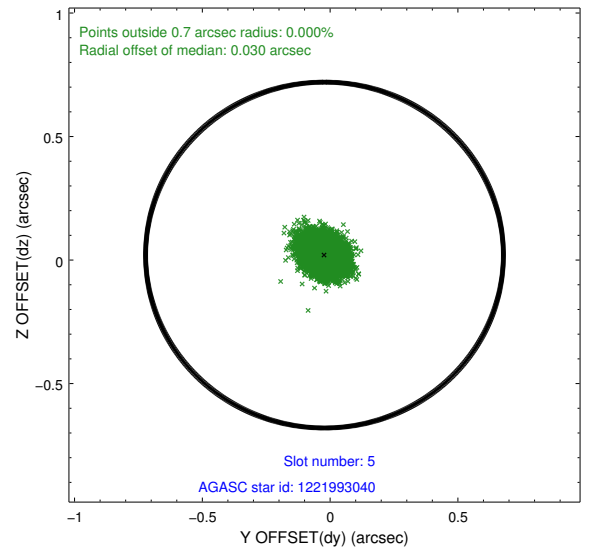
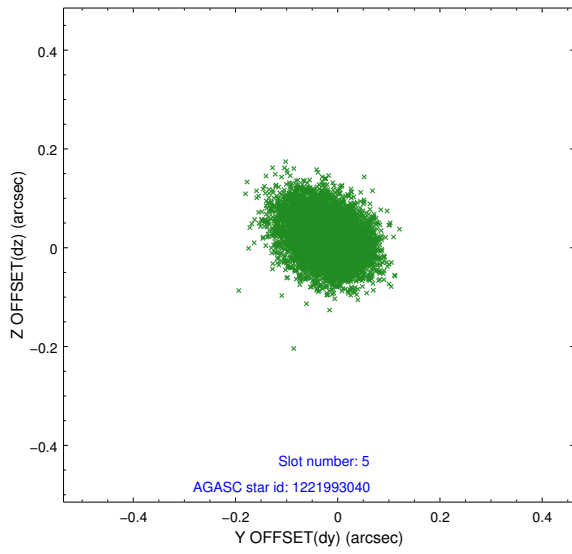
2.4.1 Slot 3



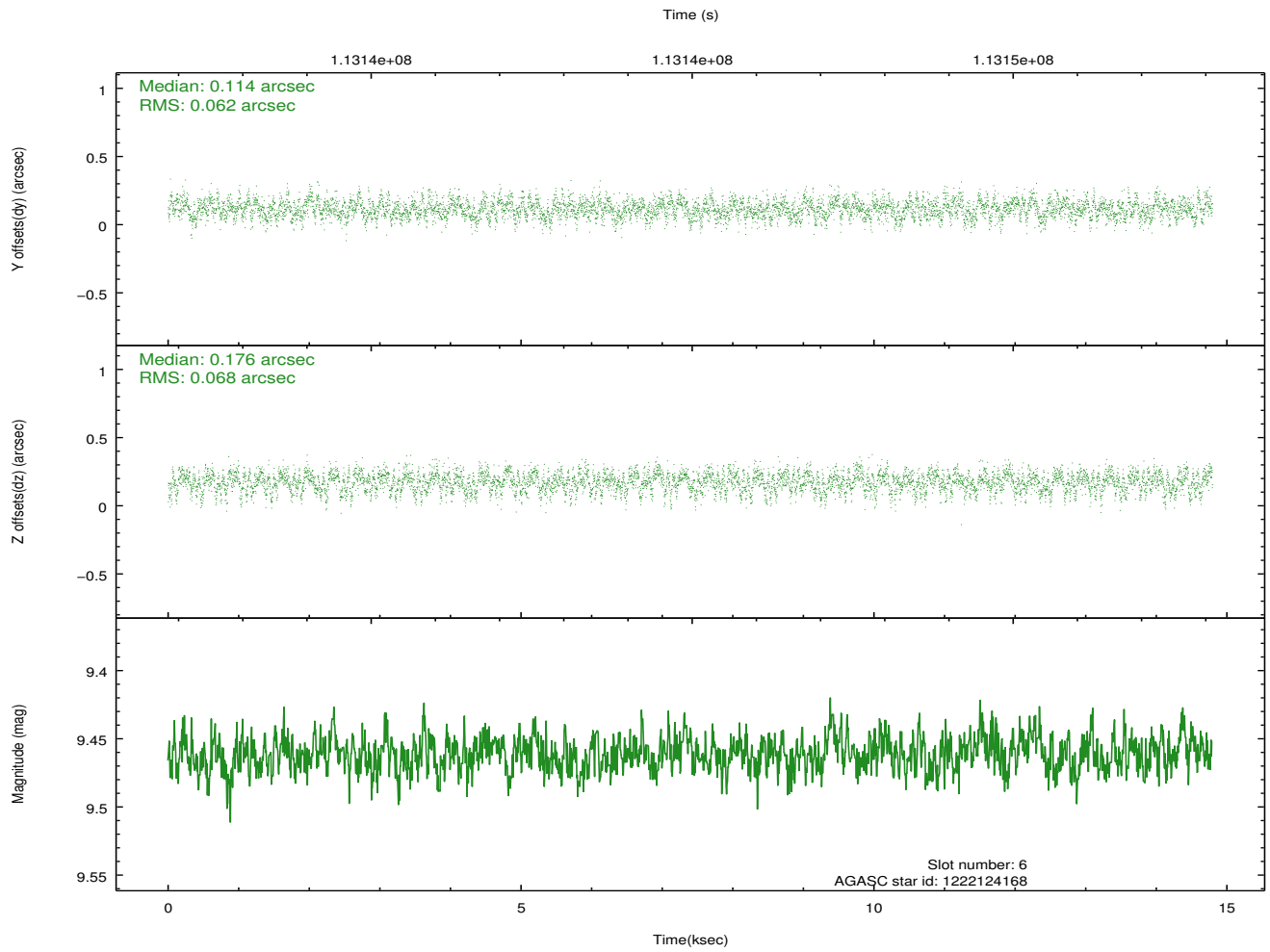
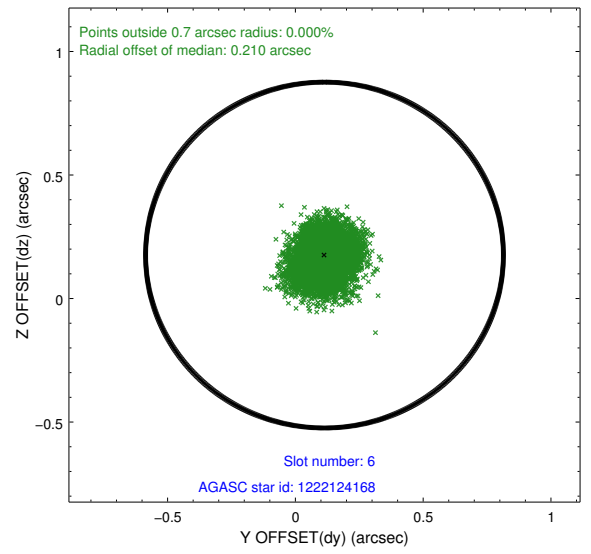
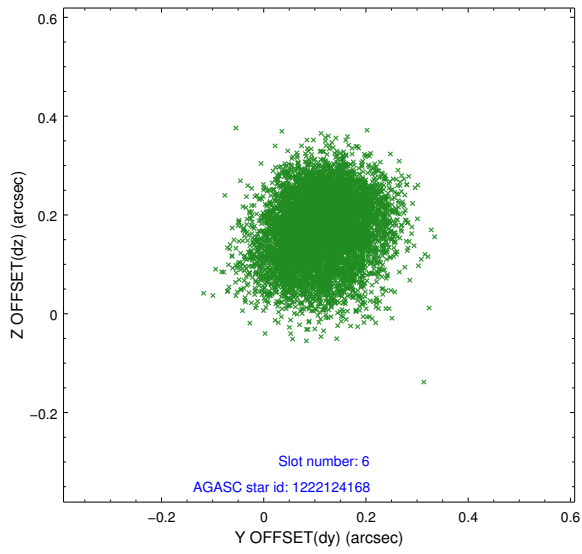
2.4.2 Slot 4



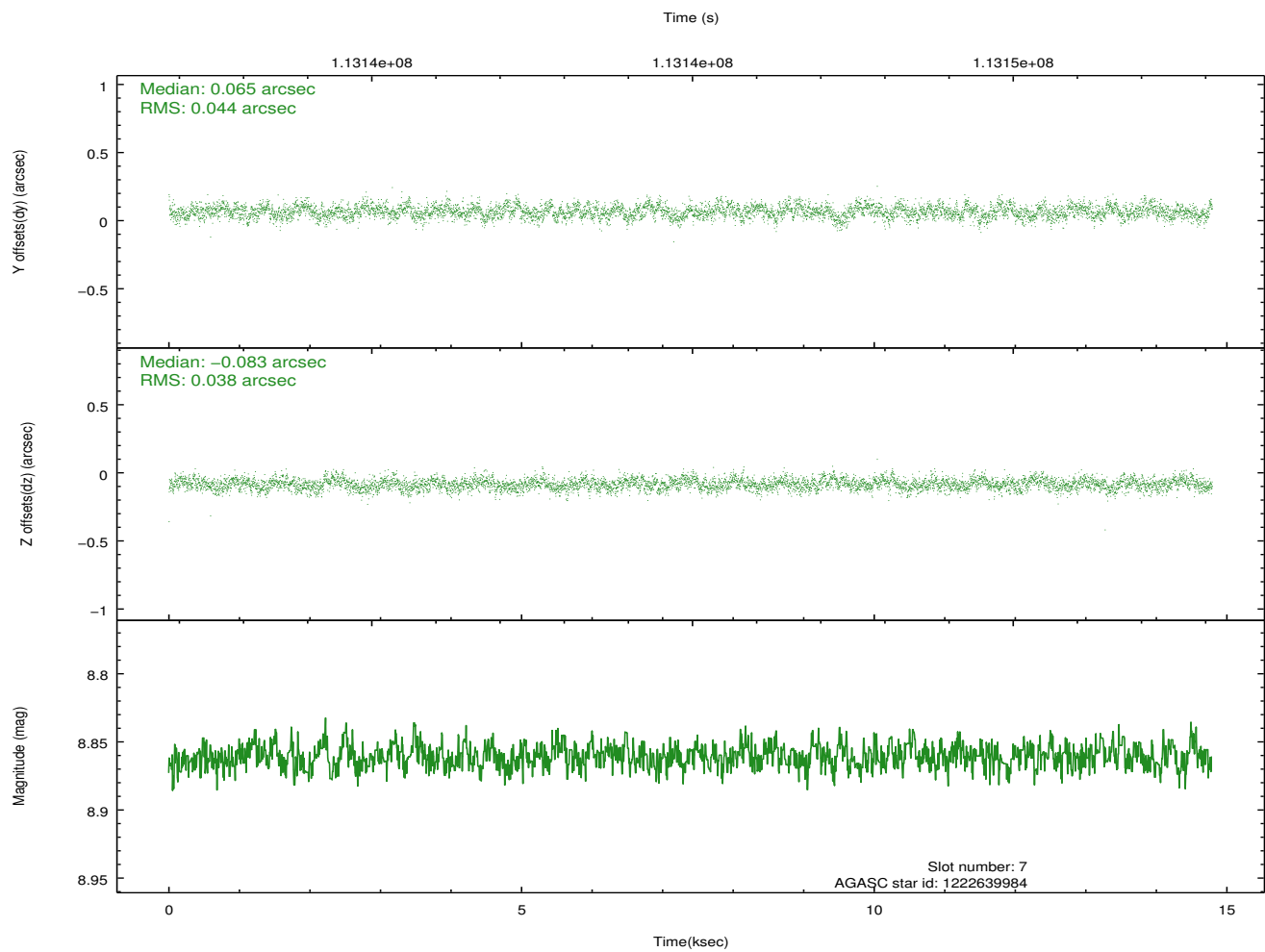
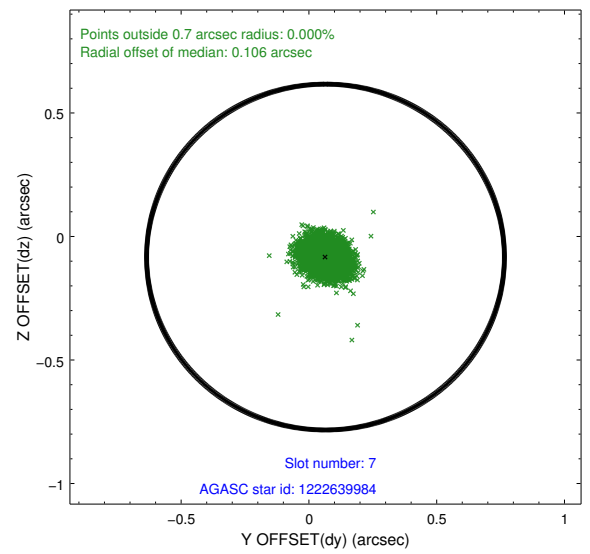
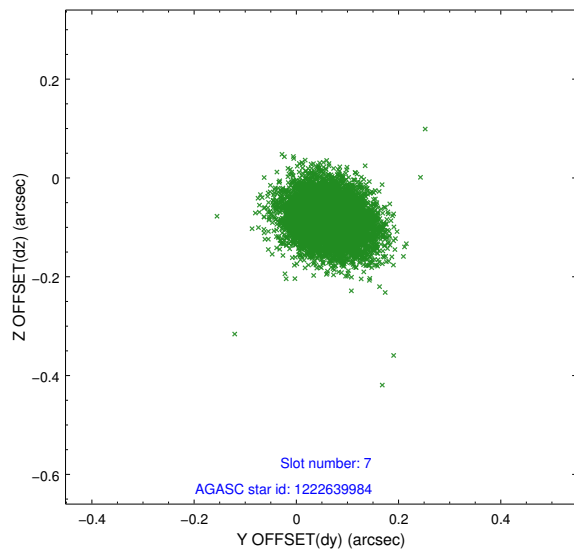
2.4.3 Slot 5



2.4.4 Slot 6

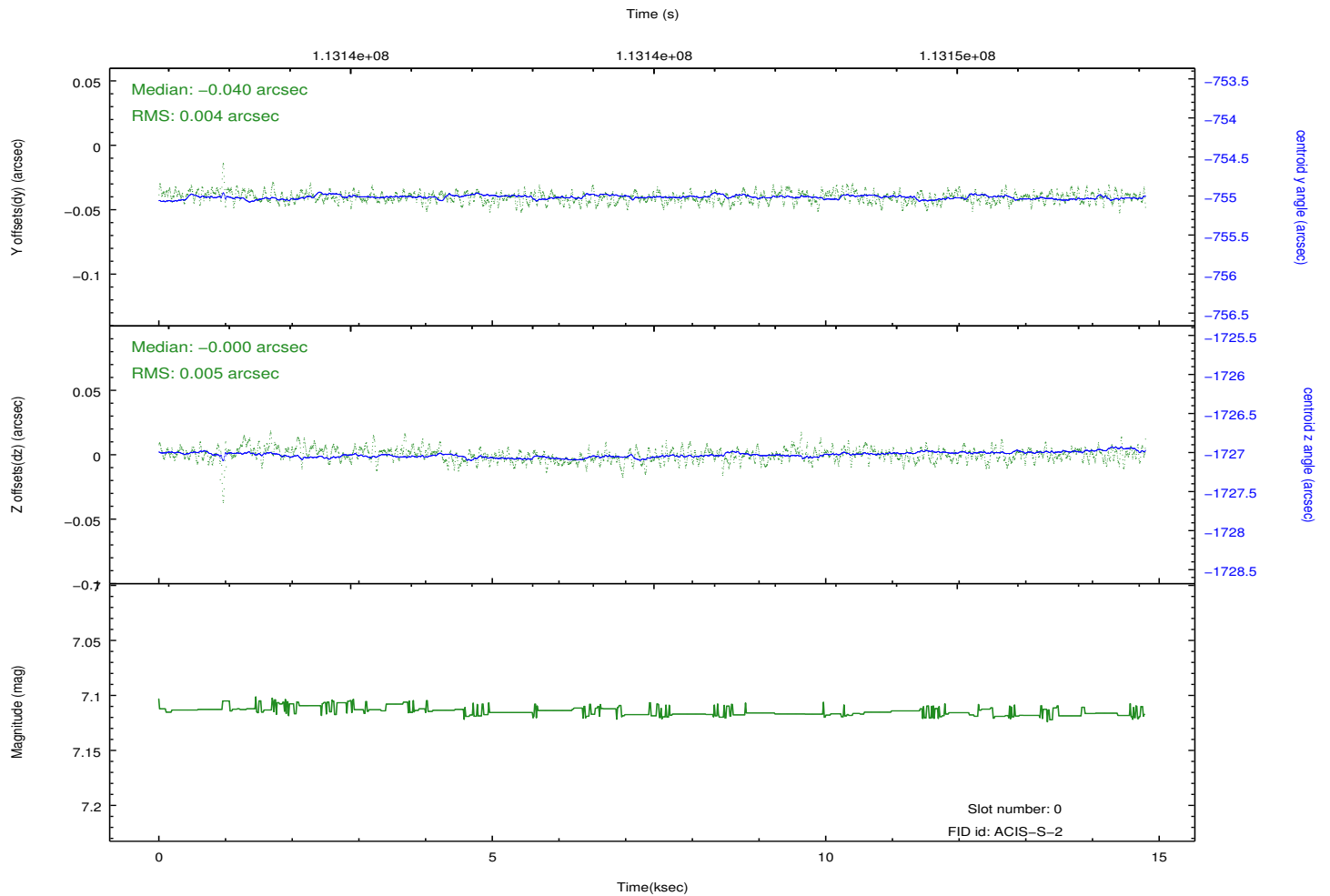
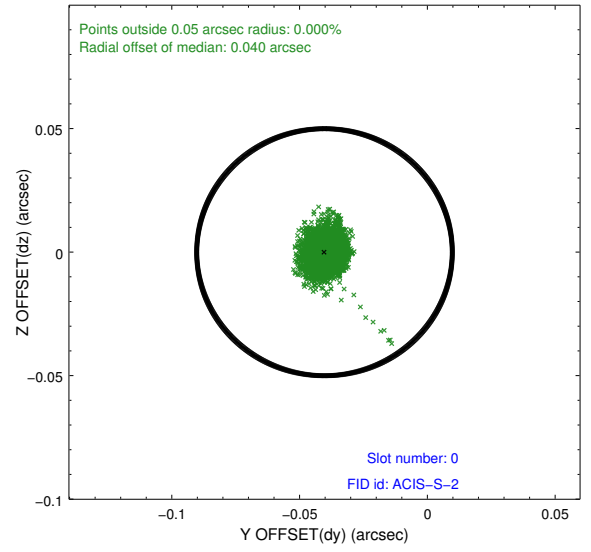
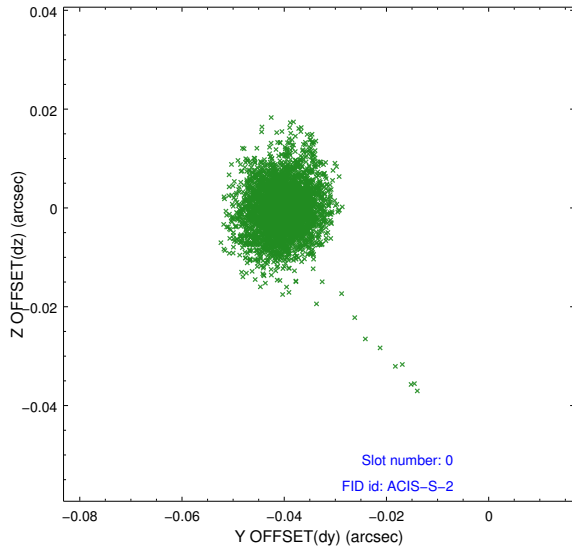


2.4.5 Slot 7

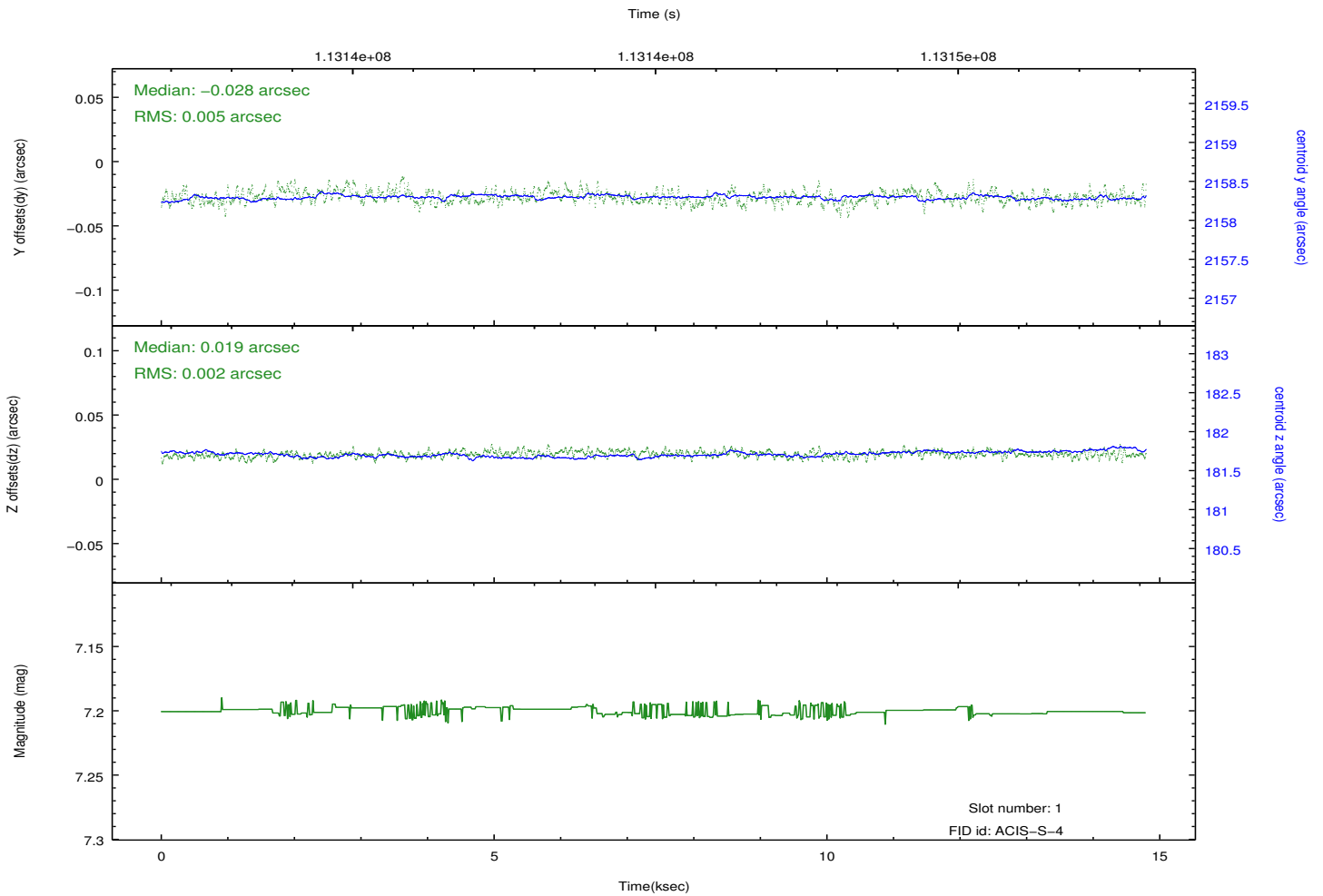
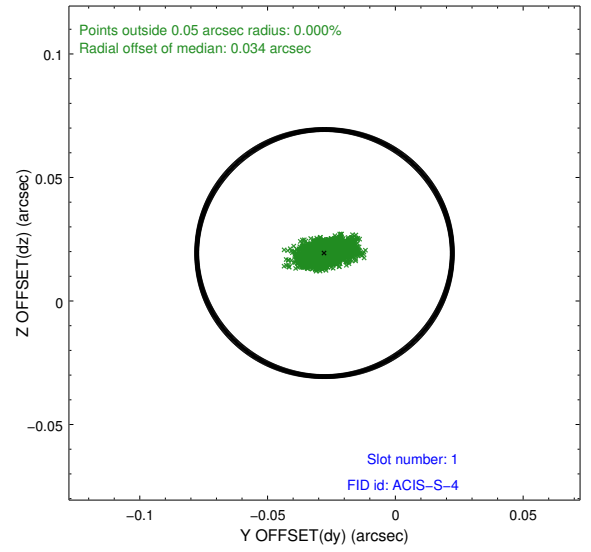
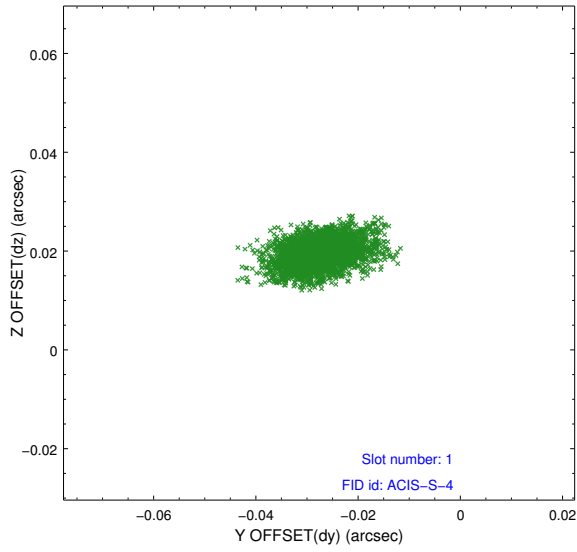


2.5 FID Slots

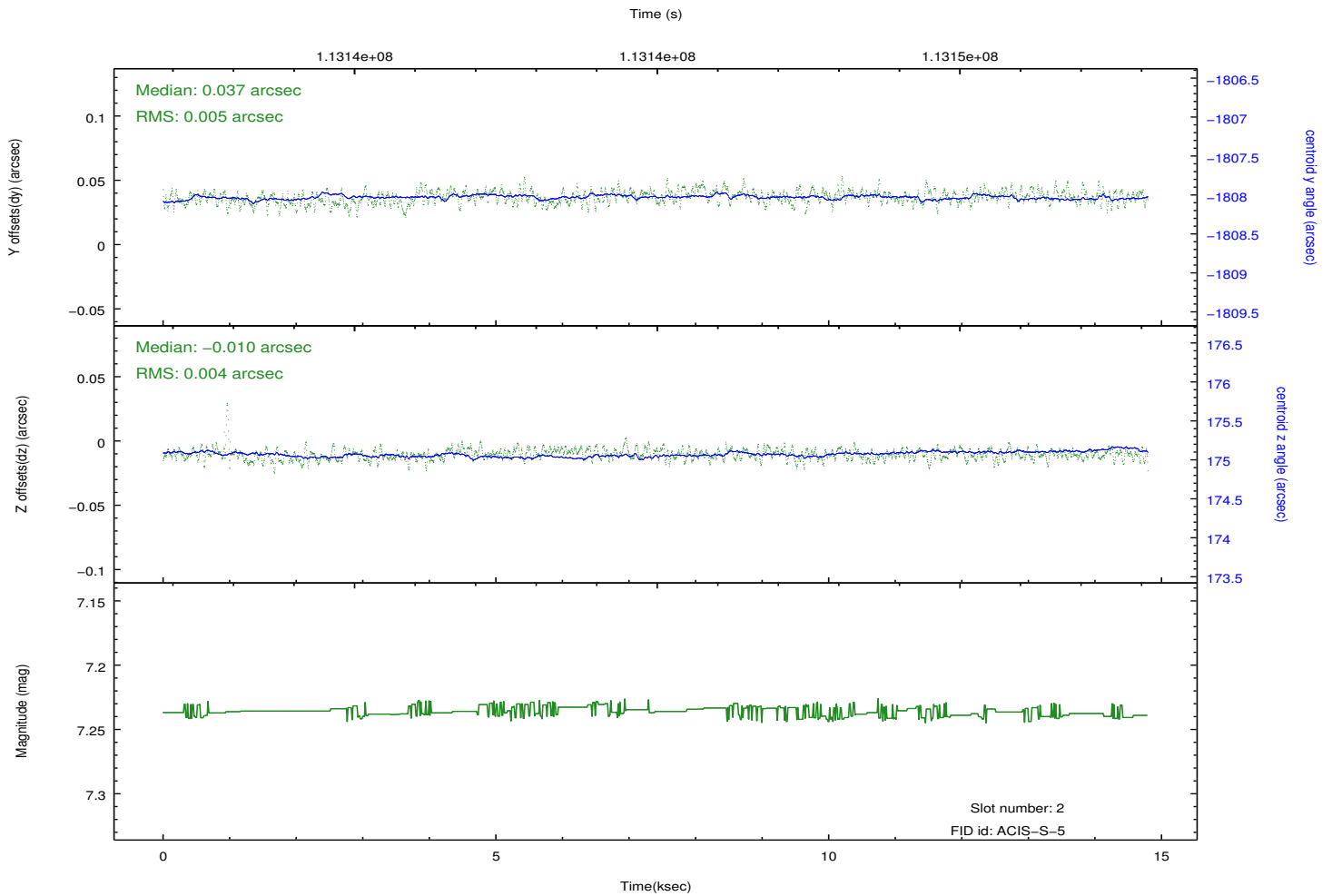
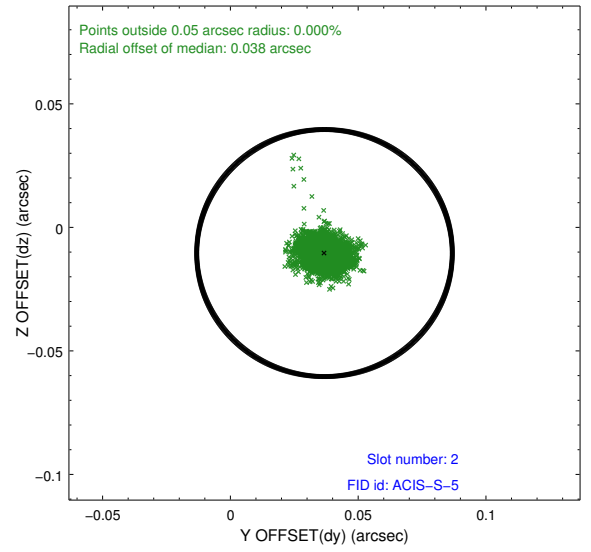
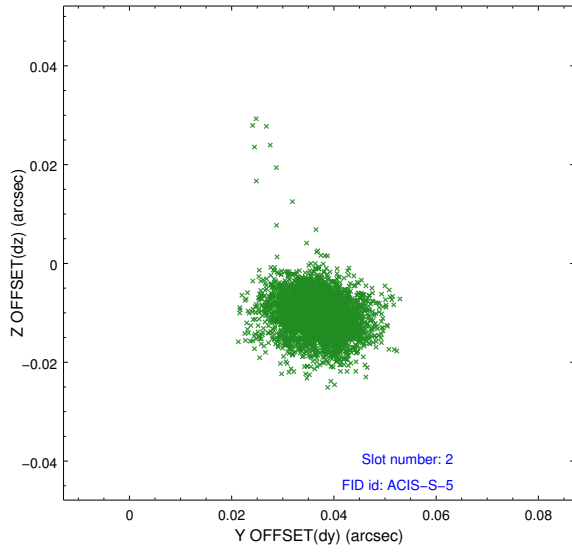
2.5.1 Slot 0



2.5.2 Slot 1



2.5.3 Slot 2



A Summary

A.1 Status

V&V Scientist	Jen Lauer
V&V Date (YYYY-MM-DD)	2012.09.25
V&V Edition	1
V&V Disposition and Status	OK
V&V Charge Time	13.949

A.2 Comments