

V&V Reference Report

L2 ASCDS Version : 10.0.1

Observation 16367 - L2 Version 2
Chandra X-Ray Center

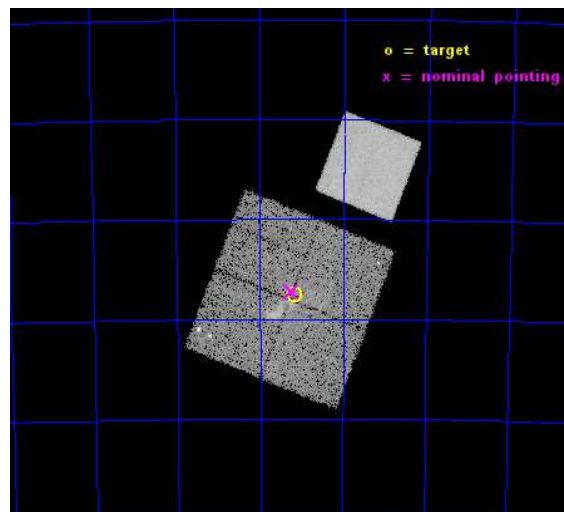
L2 Processing Date : Dec 6 2014

Contents

1	Front	2
2	OBI	3
2.1	OBI	3
2.1.1	Images	3
2.1.2	Bias	3
2.1.3	Parameters	4
2.1.4	Events	4
2.2	Compared Parameters	5
2.3	Aspect	6
2.4	Star Slots	9
2.4.1	Slot 3	9
2.4.2	Slot 4	10
2.4.3	Slot 5	11
2.4.4	Slot 6	12
2.4.5	Slot 7	13
2.5	FID Slots	14
2.5.1	Slot 0	14
2.5.2	Slot 1	15
2.5.3	Slot 2	16
A	Summary	17
A.1	Status	17
A.2	Comments	17

1 Front

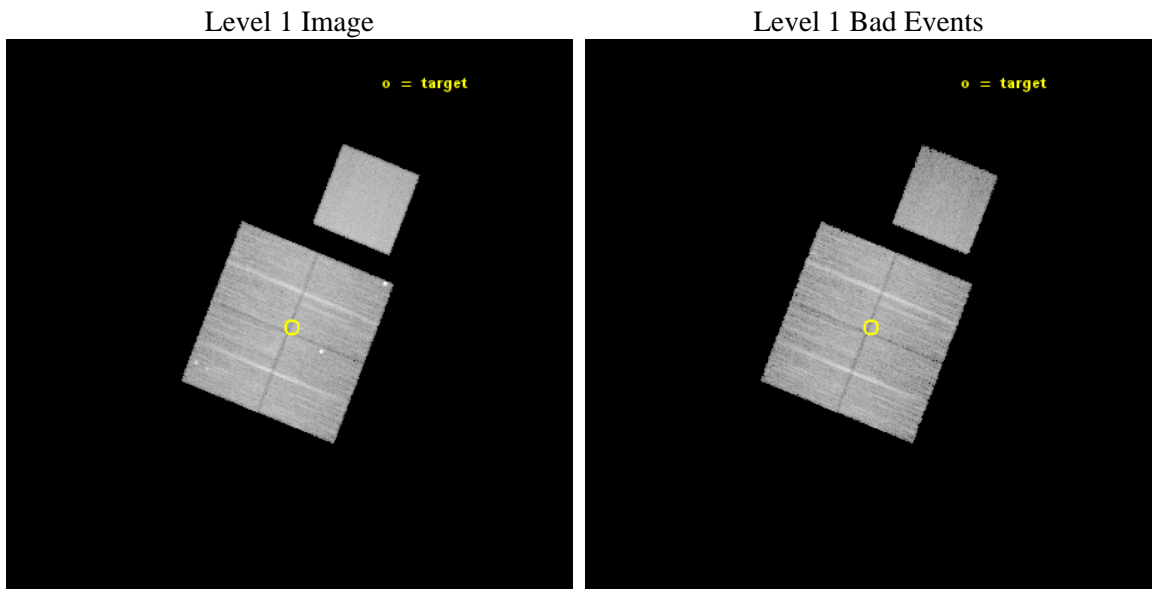
seq_num	401507	Sequence number
obs_id	16367	Observation id
title	The Small Magellanic Cloud - A Case Study of X-ray Populations at Low Metallicity	Proposal title
observer	Dr Andreas Zezas	Principal investigator
object	Deep Field 11	Source name
dtcycle	0	
cycle	P	events from which exps? Prim/Second/Both
ra_targ	11.79	Observer's specified target RA [deg]
dec_targ	-73.125833	Observer's specified target Dec [deg]
ra_nom	11.811658347927	Nominal RA [deg]
dec_nom	-73.120770883289	Nominal Dec [deg]
roll_nom	21.589404795071	Nominal Roll [deg]
revision	2	Processing version of data
ontime	24260.477075875	Sum of GTIs [s]
livetime	23943.496082575	Livetime [s]
ontime0	24269.900186658	Sum of GTIs [s]
ontime1	24263.61811614	Sum of GTIs [s]
ontime2	24269.900186658	Sum of GTIs [s]
ontime3	24260.477075875	Sum of GTIs [s]
ontime7	24269.900186658	Sum of GTIs [s]
l2events	103231	Number of level 2 events



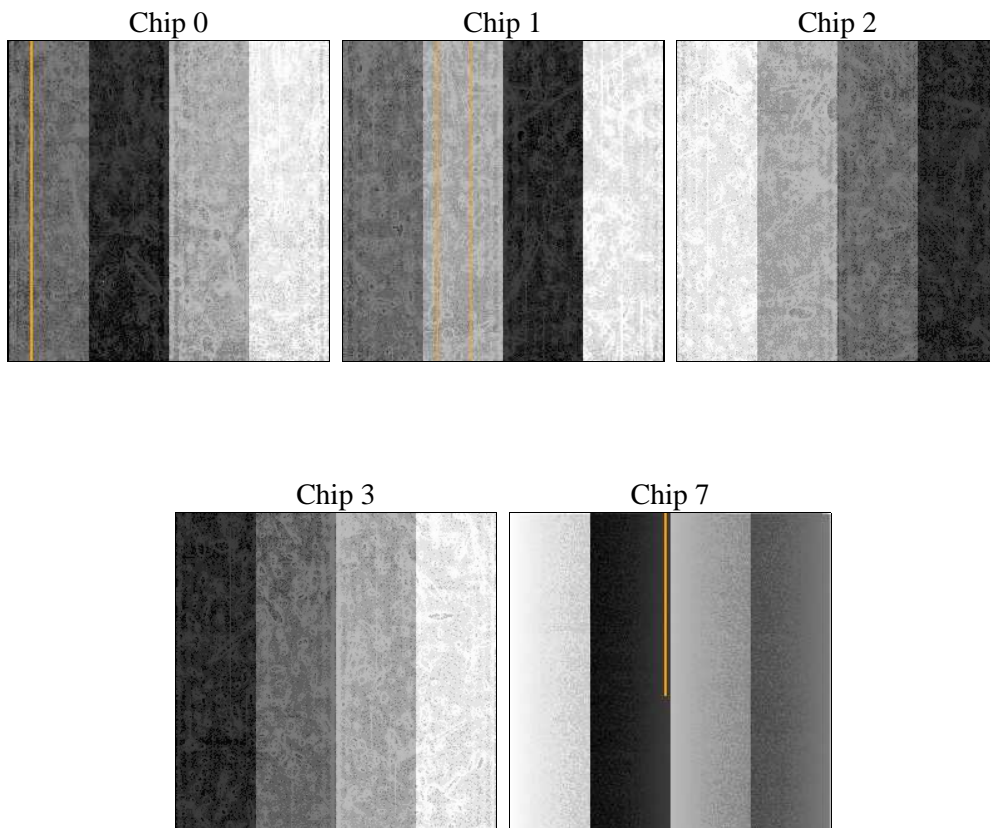
2 OBI

2.1 OBI

2.1.1 Images



2.1.2 Bias



2.1.3 Parameters

obi_num	0	Obi number	sched_exp_time	24200.000000	[s] Scheduled observation exposure time
ascdsver	10.3.1	Processing system revision	ontime	24260.477075875	Sum of GTIs [s]
caldbver	4.6.4	 	ontime0	24269.900186658	Sum of GTIs [s]
date	2014-12-06T22:39:47	Date and time of file creation	ontime1	24263.61811614	Sum of GTIs [s]
revision	2	Processing version of data	ontime2	24269.900186658	Sum of GTIs [s]
			ontime3	24260.477075875	Sum of GTIs [s]
			ontime7	24269.900186658	Sum of GTIs [s]
			l1events	539181	Number of level 1 events

2.1.4 Events

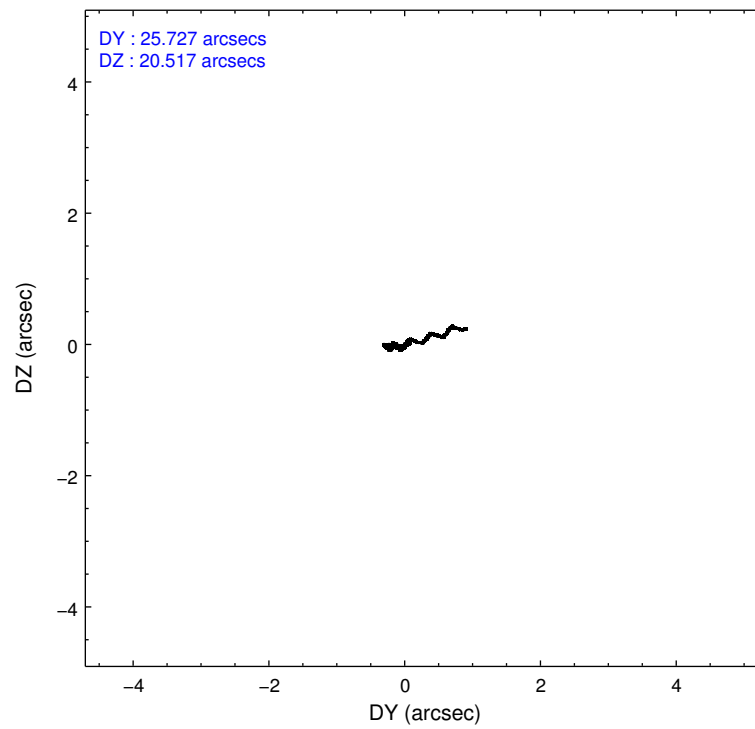
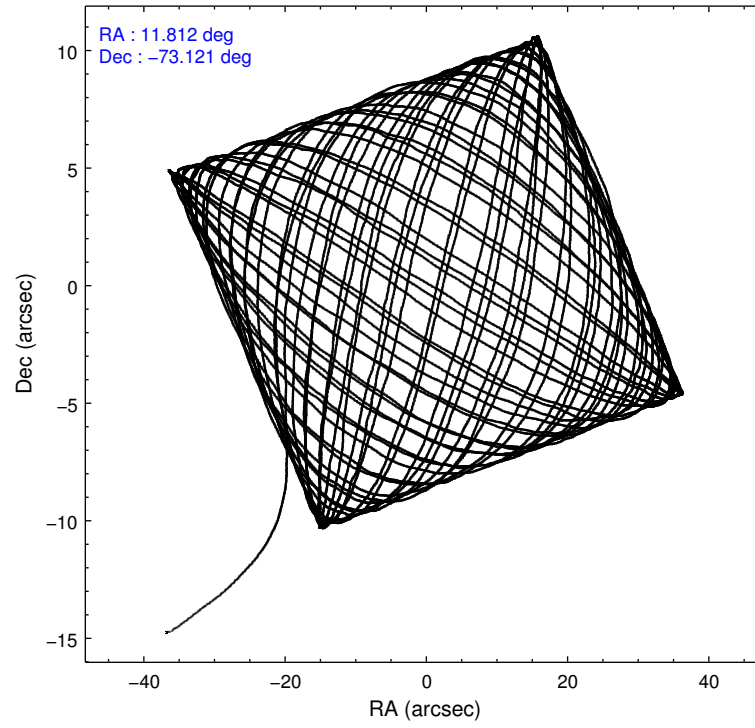
	ccd 0	ccd 1	ccd 2	ccd 3	ccd 7
level 1 events	102250	97932	107096	103172	128731
rejected events	87319	82512	94622	88516	68767
rejected %	85%	84%	88%	85%	53%

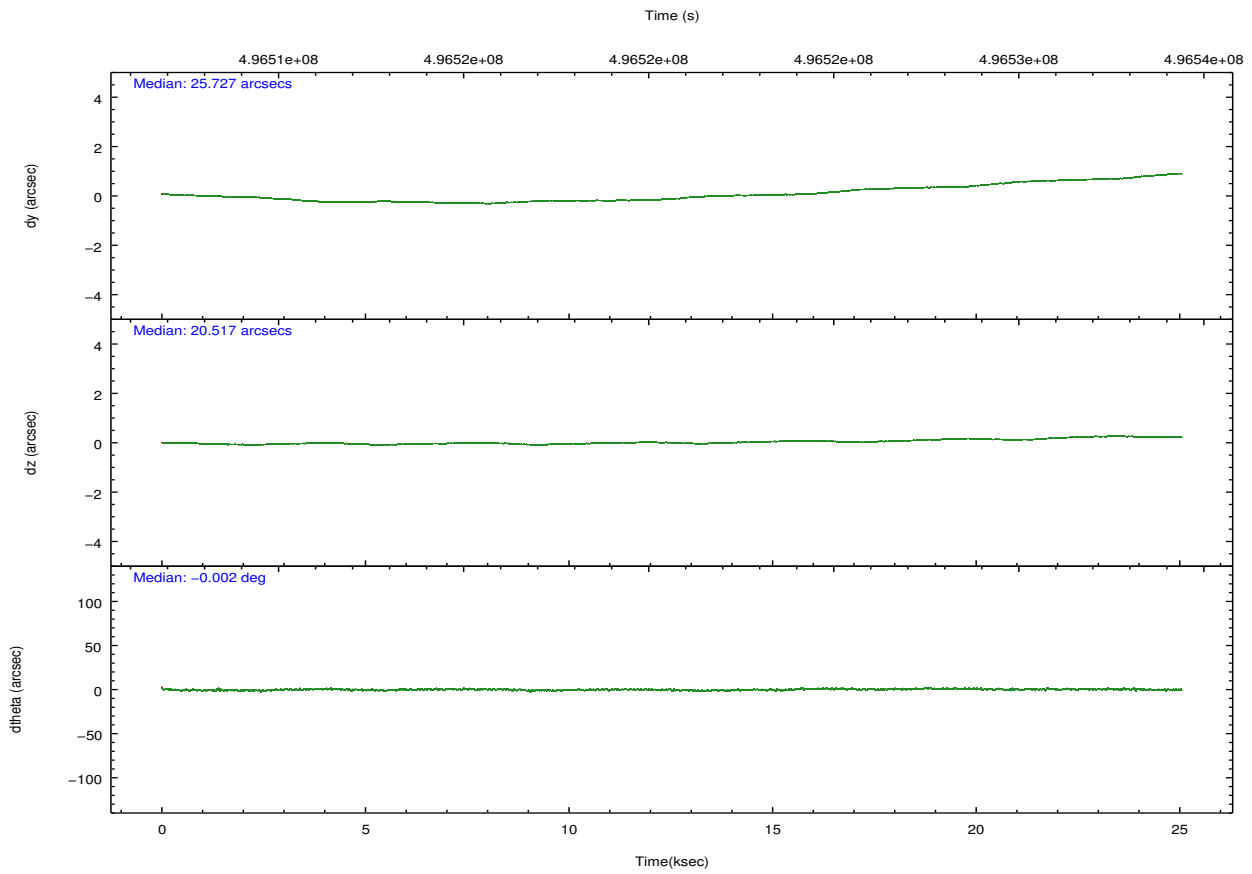
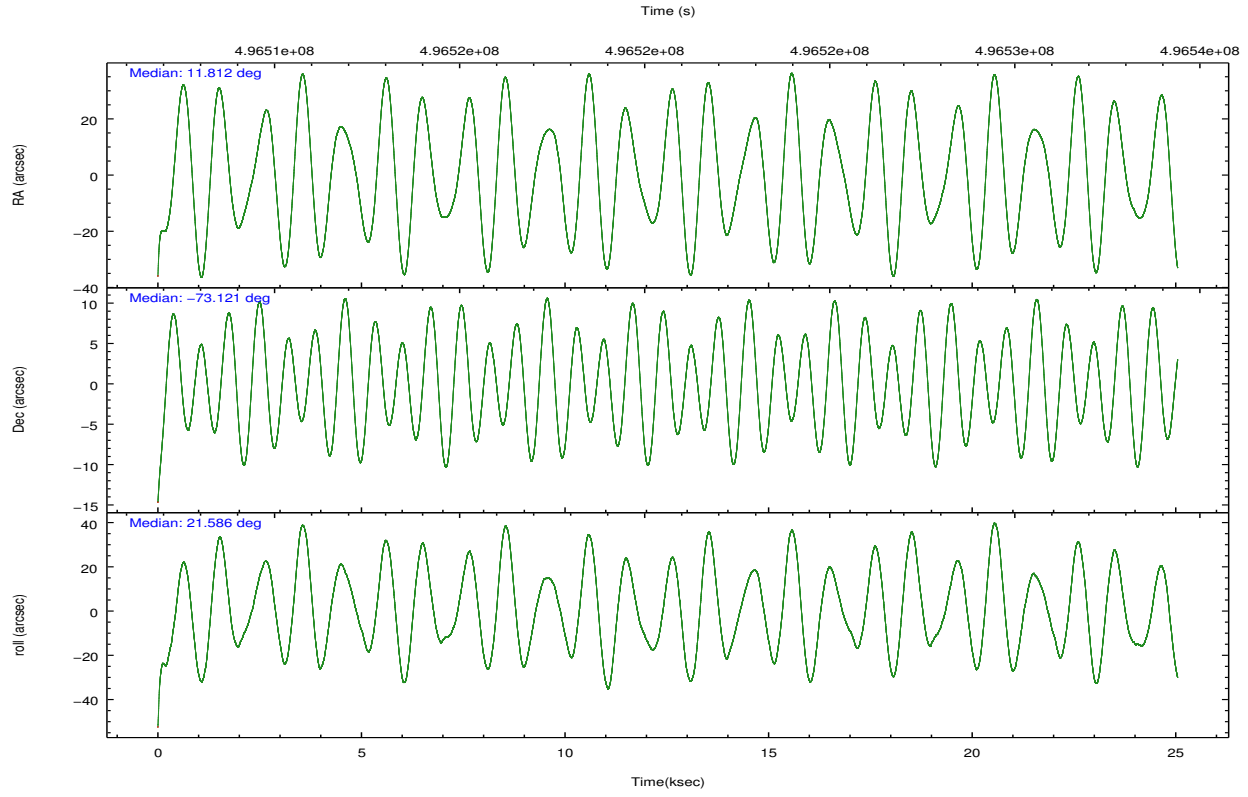
	ccd 0	ccd 1	ccd 2	ccd 3	ccd 7
grade 0 events	6230	6624	4710	7086	5854
	6%	6%	4%	6%	4%
grade 1 events	50	72	70	86	181
	0%	0%	0%	0%	0%
grade 2 events	3400	3193	3119	2748	12702
	3%	3%	2%	2%	9%
grade 3 events	1389	1319	1247	1241	5242
	1%	1%	1%	1%	4%
grade 4 events	1318	1418	1206	1301	5239
	1%	1%	1%	1%	4%
grade 5 events	4405	4715	4280	5095	13944
	4%	4%	3%	4%	10%
grade 6 events	2599	2868	2194	2282	30940
	2%	2%	2%	2%	24%
grade 7 events	82859	77723	90270	83333	54629
	81%	79%	84%	80%	42%

2.2 Compared Parameters

Parameter	Planned	Actual	Parameter	Planned	Actual
Instrument	ACIS	ACIS	Obspar format version number	7	7
Detector	ACIS-01237	ACIS-01237	Obspar file type	PREDICTED	ACTUAL
Grating	NONE	NONE	Obspar update status	NONE	UPDATED
Data mode	VFAINT	VFAINT	Number of optional ACIS chips dropped	0	0
Observation mode	POINTING	POINTING	On-chip summing requested	N	N
[deg] Pointing RA	11.753060	11.81165834792711	Subarray requested	NONE	NONE
[deg] Pointing Dec	-73.142370	-73.12077088328934	Alternating exposures requested	N	N
[deg] Pointing Roll	21.324649	21.58940479507129	[s] Primary exposure time	0.000000	3.1
[mm] SIM focus pos	-0.782348	-0.7809083437167272			
[mm] SIM defocus	0	0.001439871863259334			
[mm] SIM translation stage pos	-233.592463	-233.5874344608287			
[mm] SIM translation stage offset	0	-0.005018542100998502			
[s] Observation start time (MET)	496508943.184000	496507247.83301			
Observation start date	2013-09-25T15:07:56	2013-09-25T14:40:47			
[s] Observation end time (MET)	496533143.184000	496534176.63448			
Observation end date	2013-09-25T21:51:16	2013-09-25T22:09:36			
Read mode	TIMED	TIMED			

2.3 Aspect





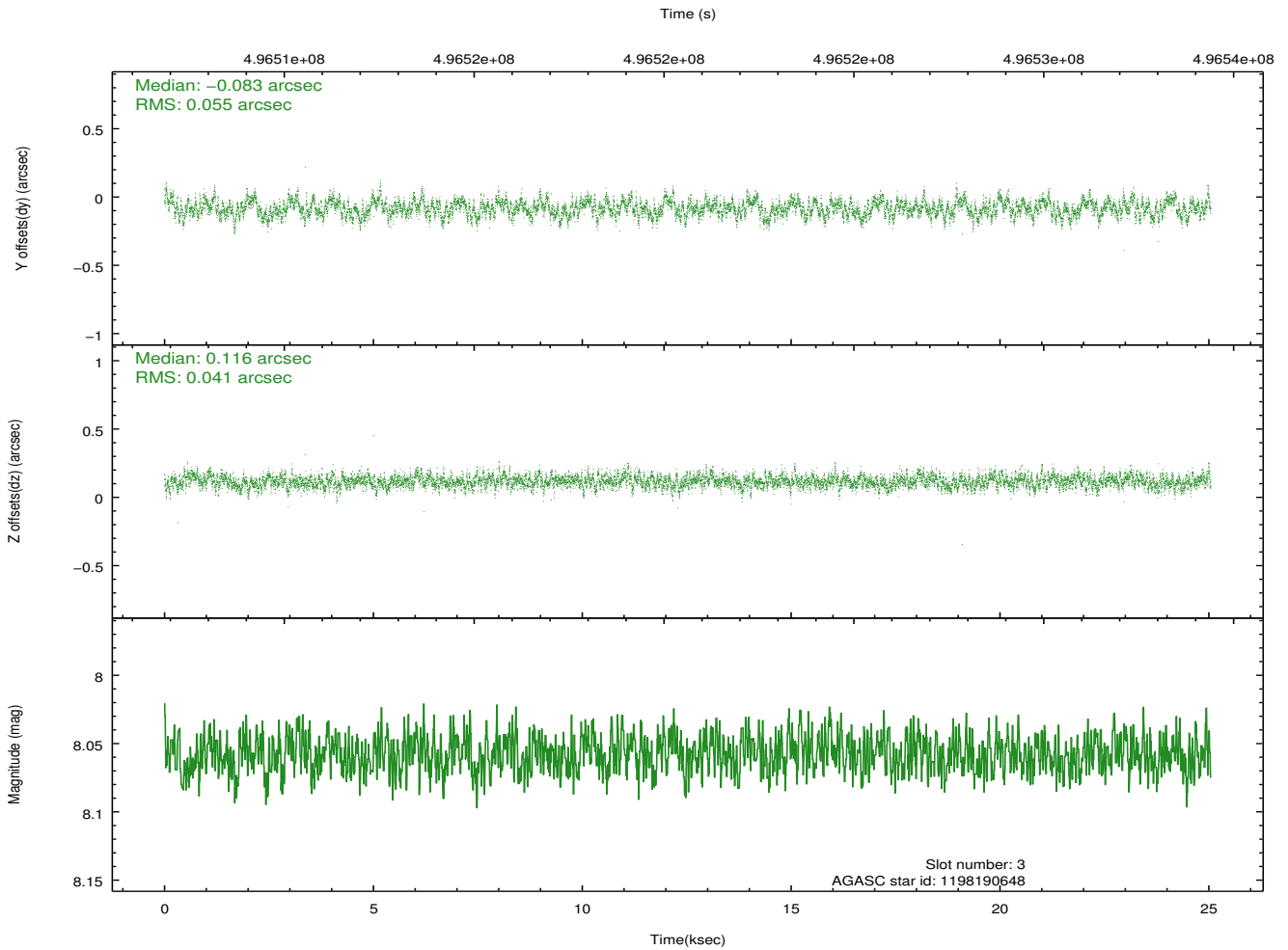
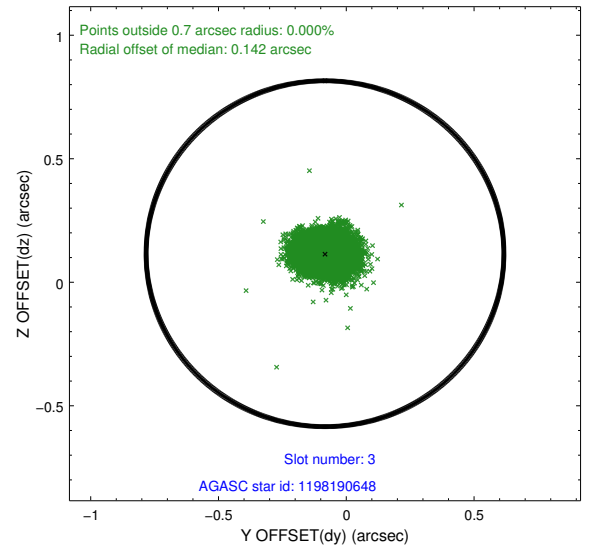
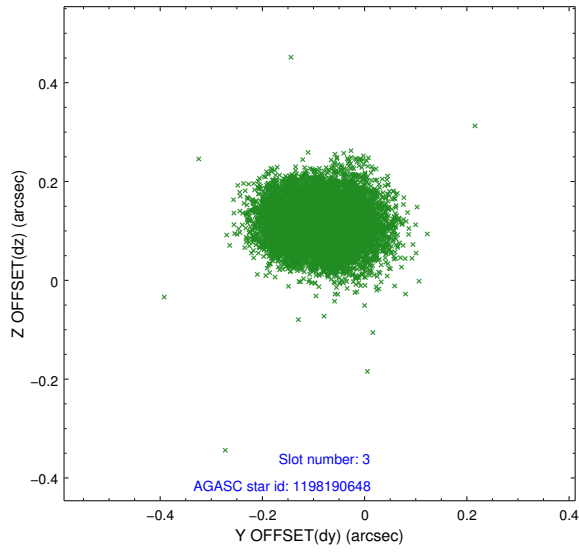
Slot Statistics

slot	status	used	id	mag	n_pts	med_dy	med_dz	dr1	dr2	ra	dec	mean_y	mean_z
0	FID		ACIS-I-2	7.01	6108	-0.040	-0.111	0.018	0.037	0.000000	0.000000	-780.88	-850.75
1	FID		ACIS-I-5	7.10	6109	-0.234	0.026	0.013	0.023	0.000000	0.000000	-1835.21	1053.17
2	FID		ACIS-I-6	7.11	6110	0.180	0.151	0.011	0.018	0.000000	0.000000	378.94	1697.92
3	GUIDE	used	1198190648	8.06	12215	-0.083	0.116	0.073	0.120	12.344115	-73.478663	122.64	-1350.50
4	GUIDE	used	1198192176	9.49	12164	-0.082	0.105	0.138	0.235	14.042526	-73.121350	2240.28	-841.51
5	GUIDE	used	1198150512	8.38	12161	0.037	-0.083	0.091	0.155	9.044301	-72.846944	-2314.76	1975.65
6	GUIDE	used	1198191824	9.34	12137	0.131	0.206	0.124	0.194	11.519918	-73.478175	-661.56	-1039.14
7	GUIDE	used	1198191400	8.38	12216	0.002	-0.341	0.092	0.143	11.617890	-72.595865	579.92	1885.32

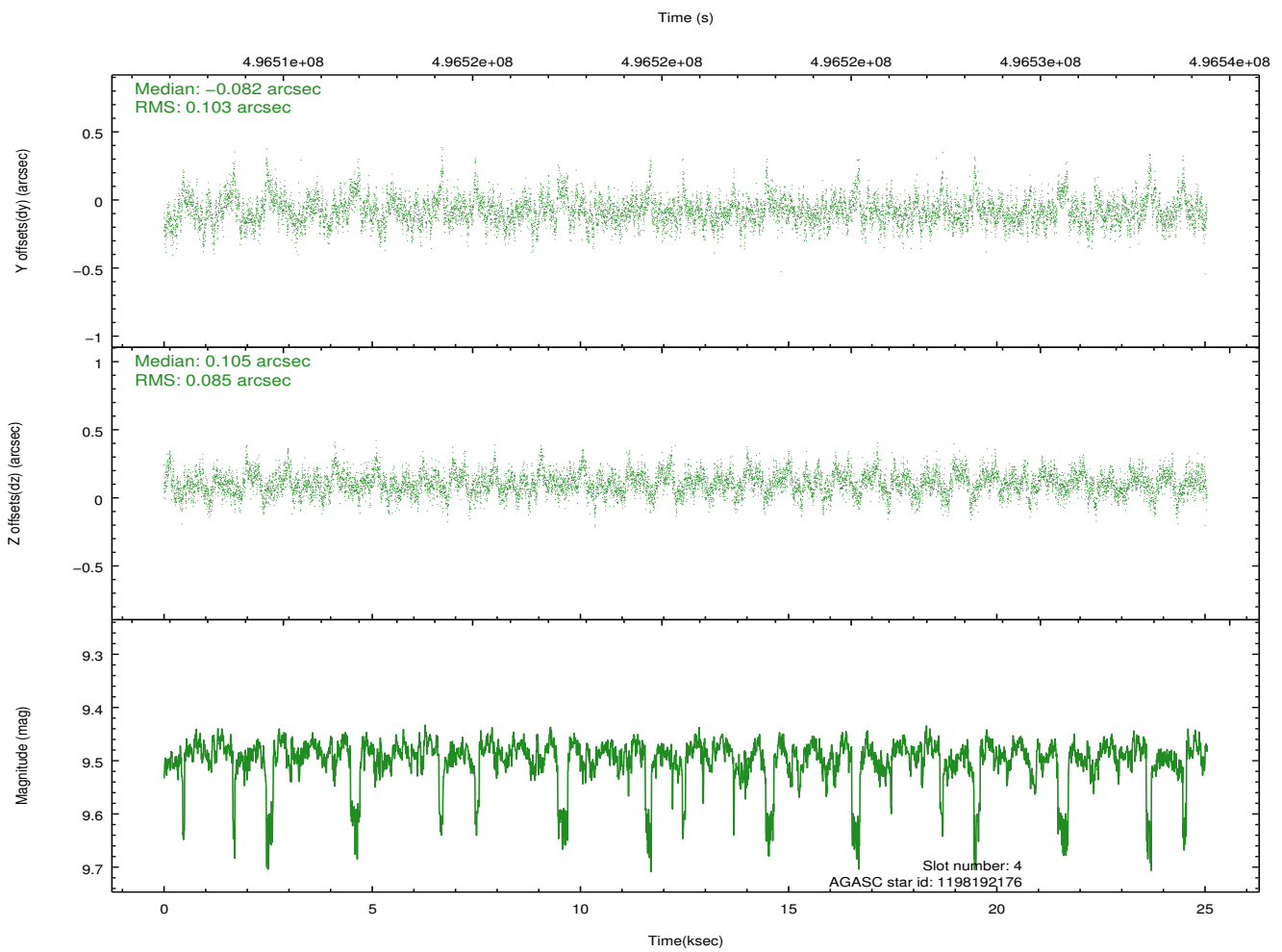
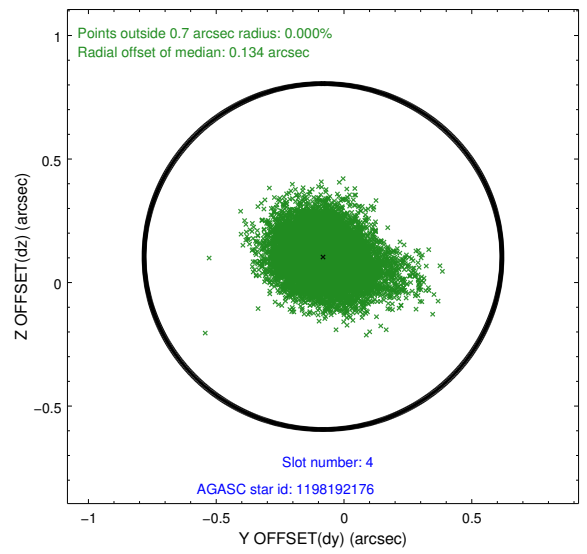
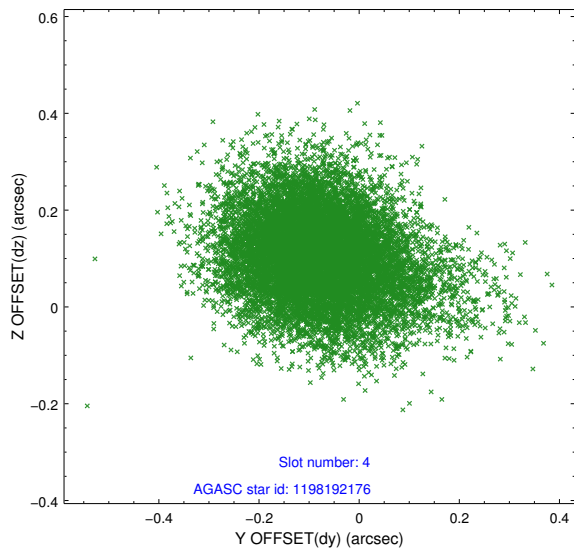
∞

2.4 Star Slots

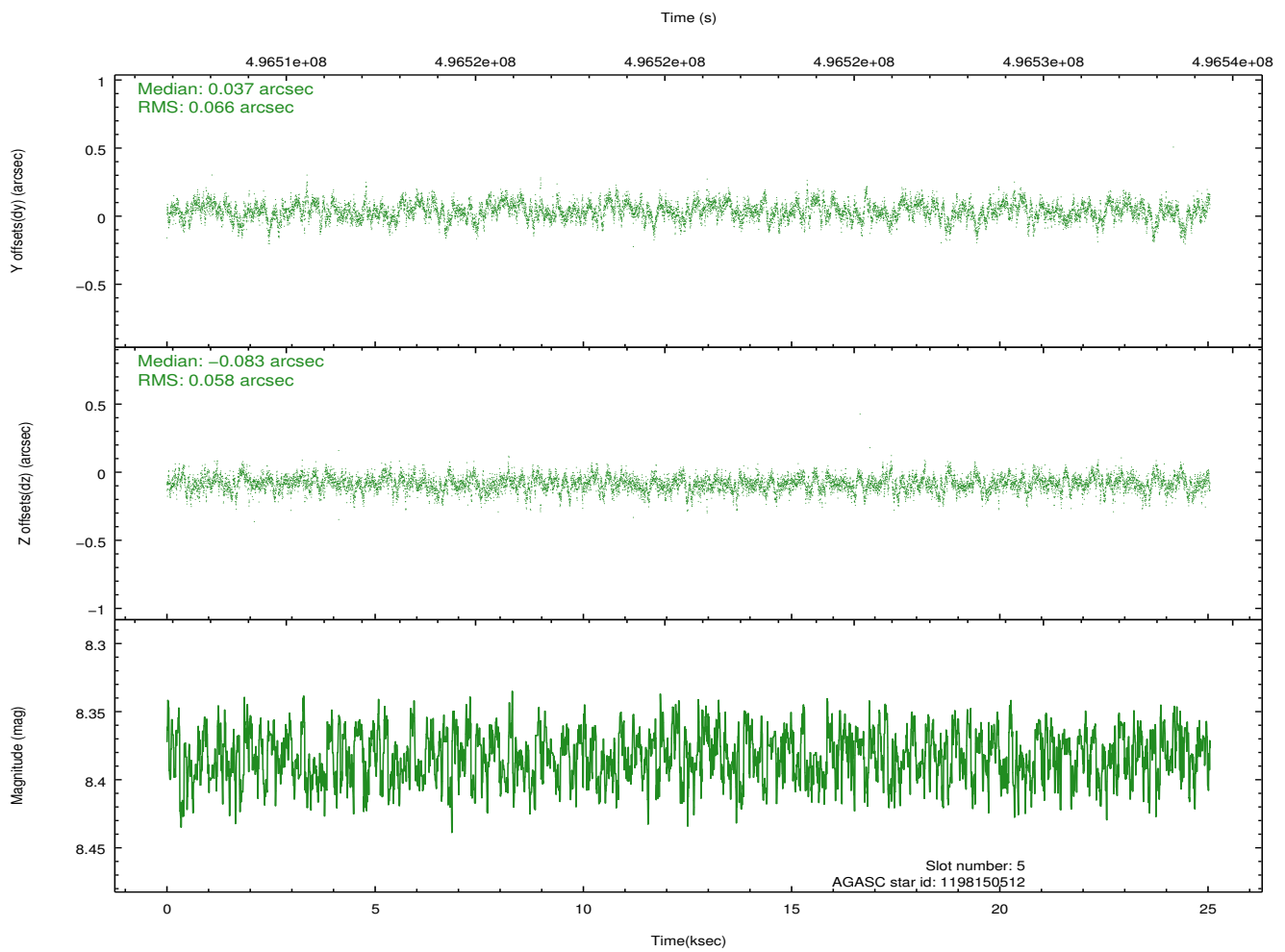
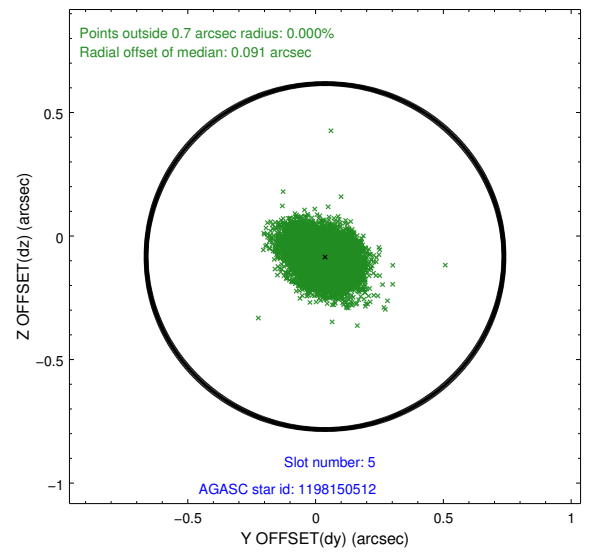
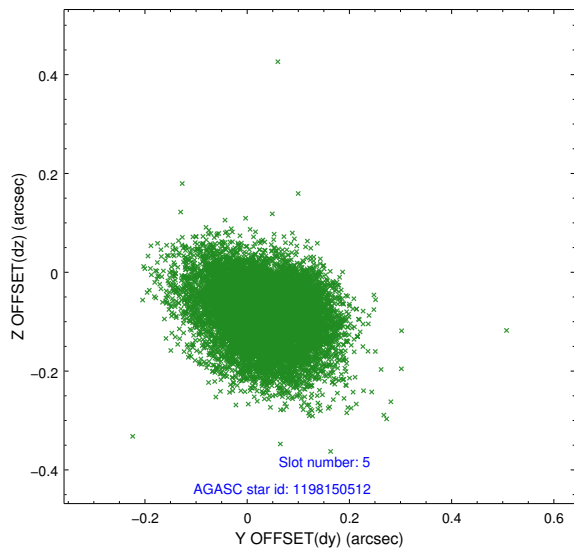
2.4.1 Slot 3



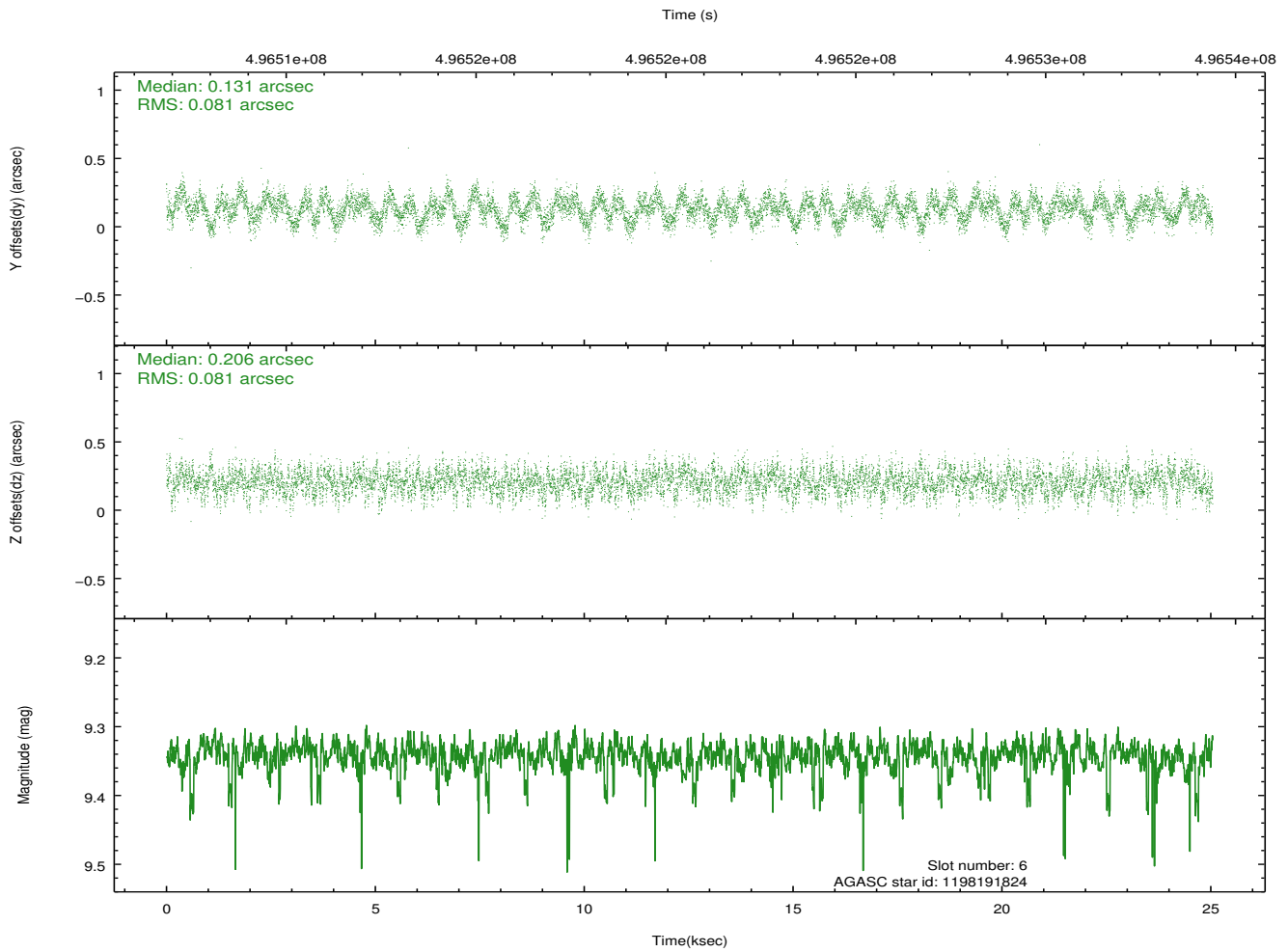
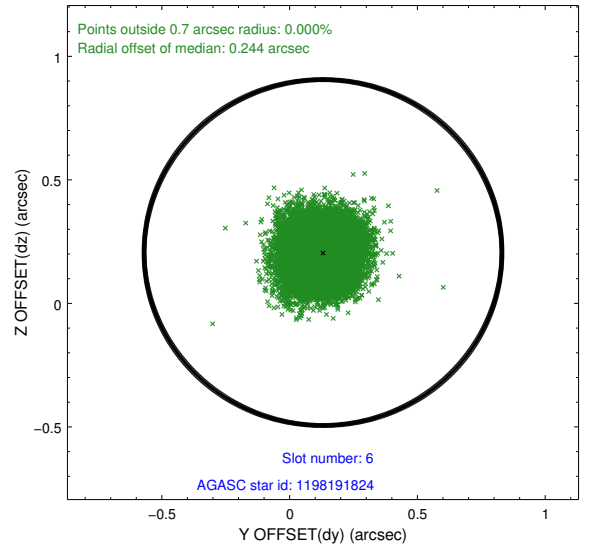
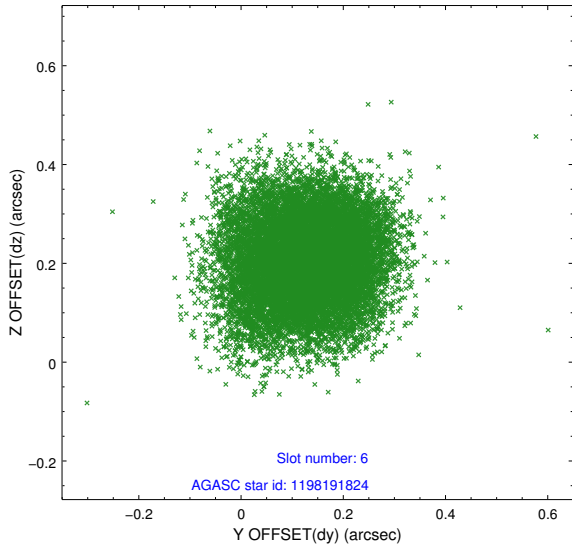
2.4.2 Slot 4



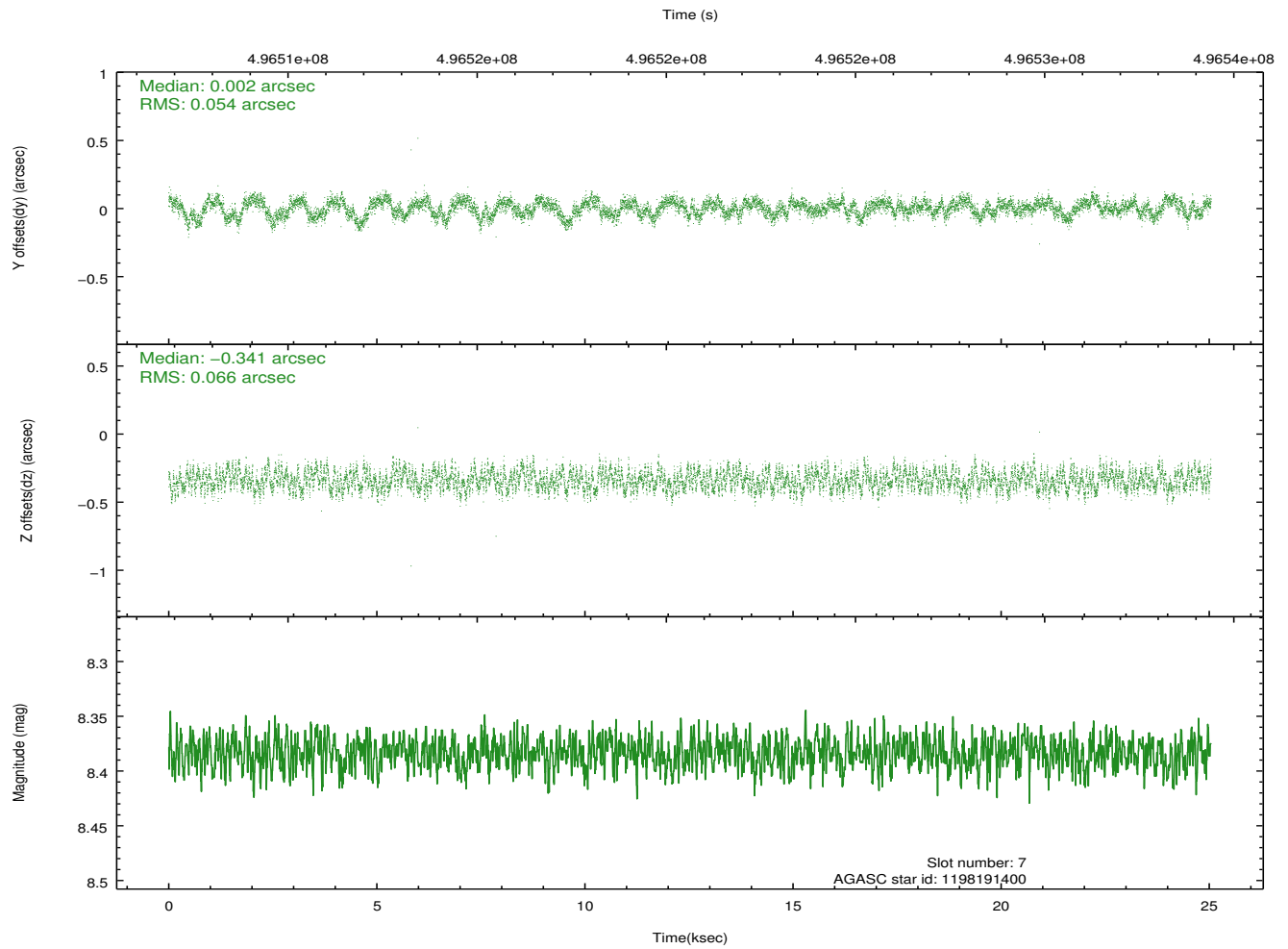
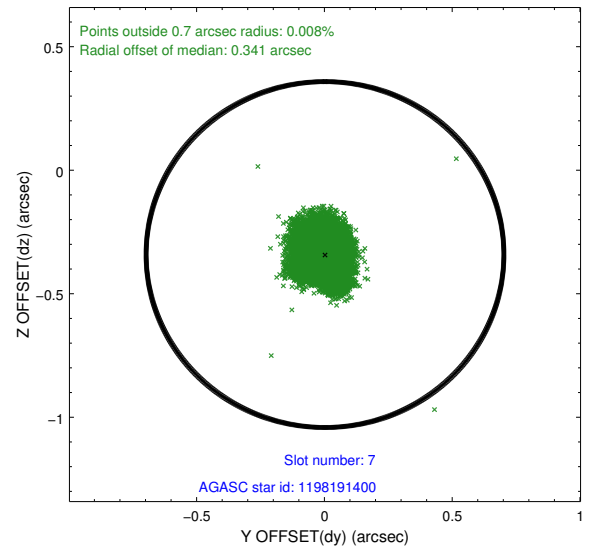
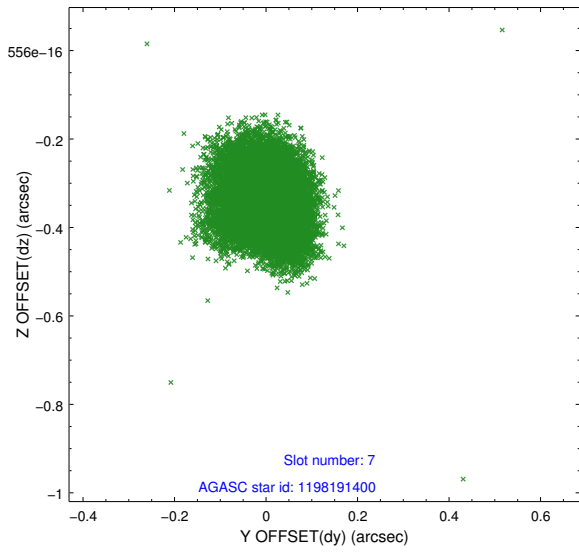
2.4.3 Slot 5



2.4.4 Slot 6

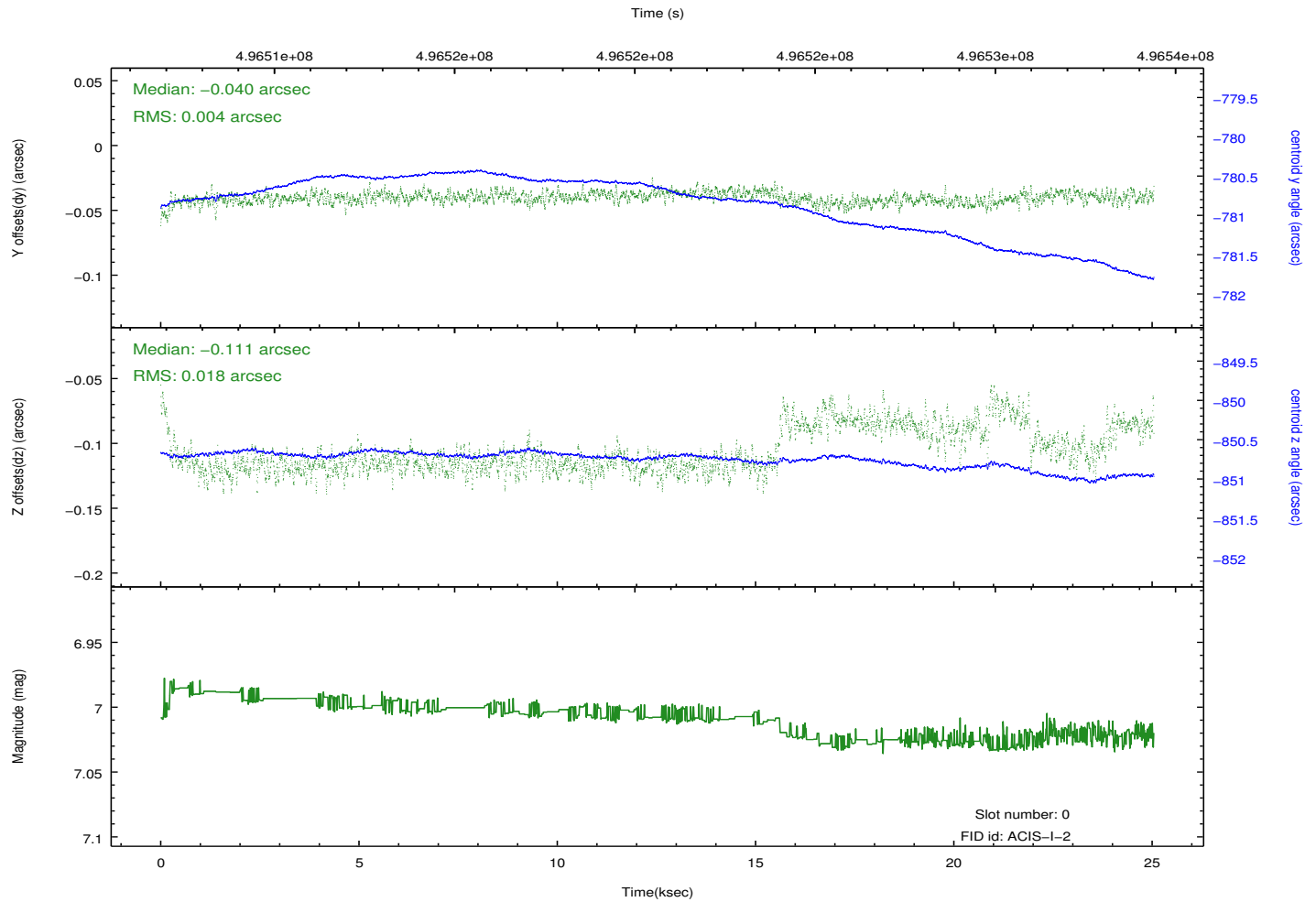
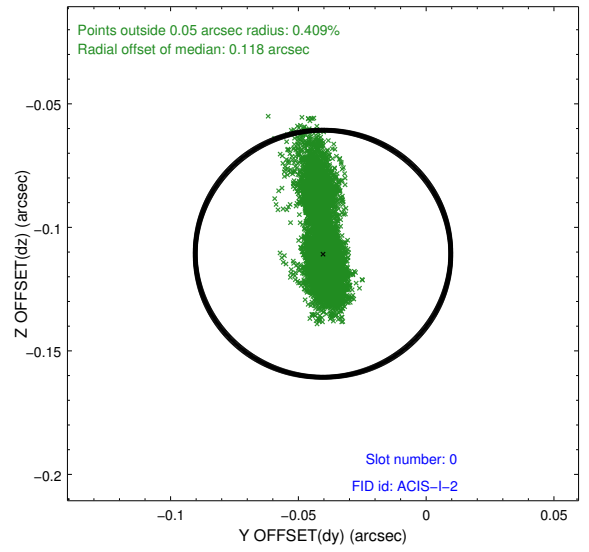
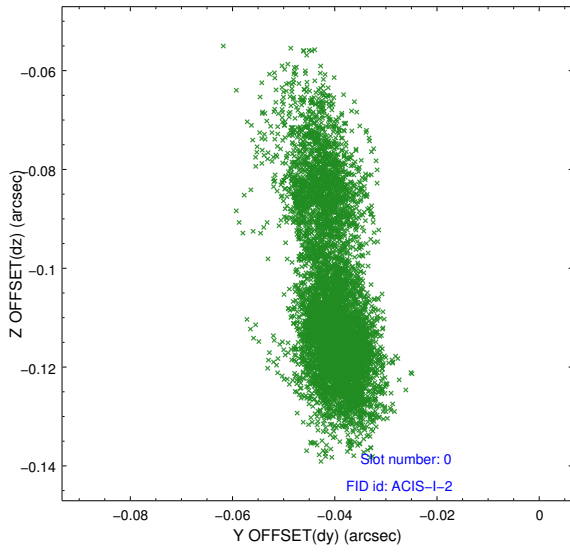


2.4.5 Slot 7

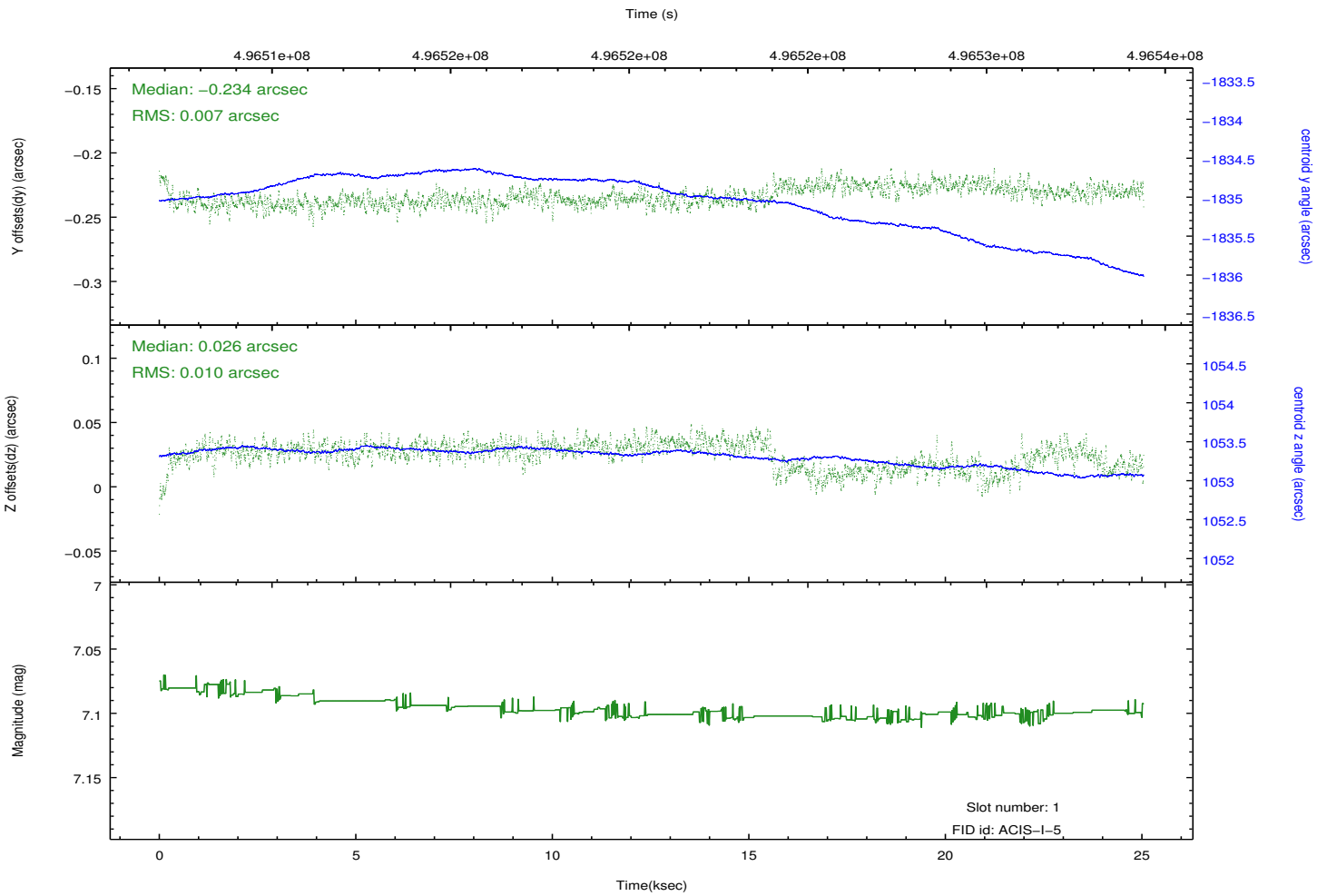
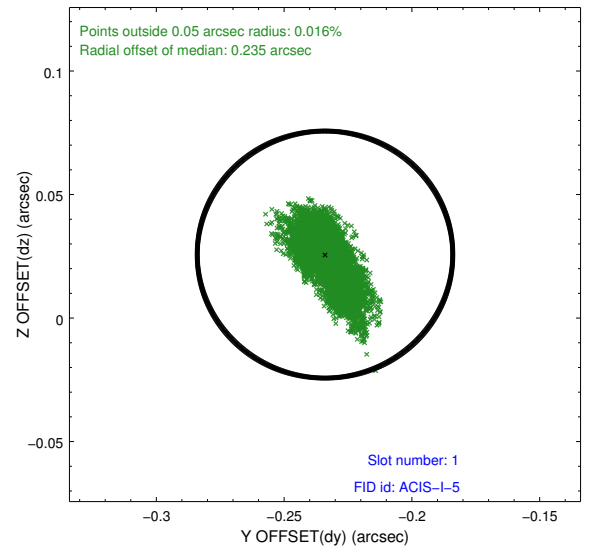
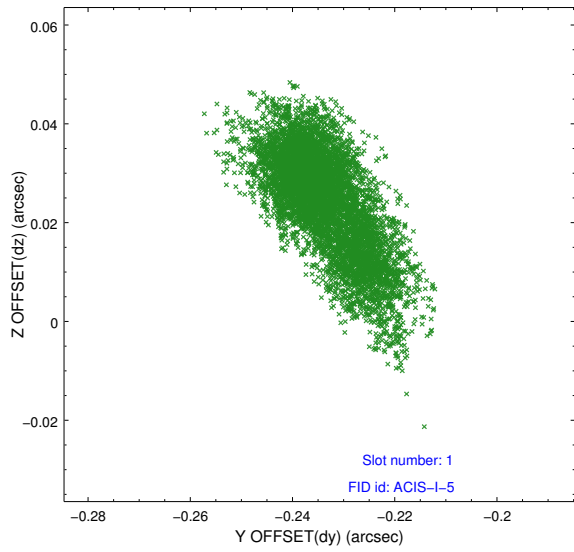


2.5 FID Slots

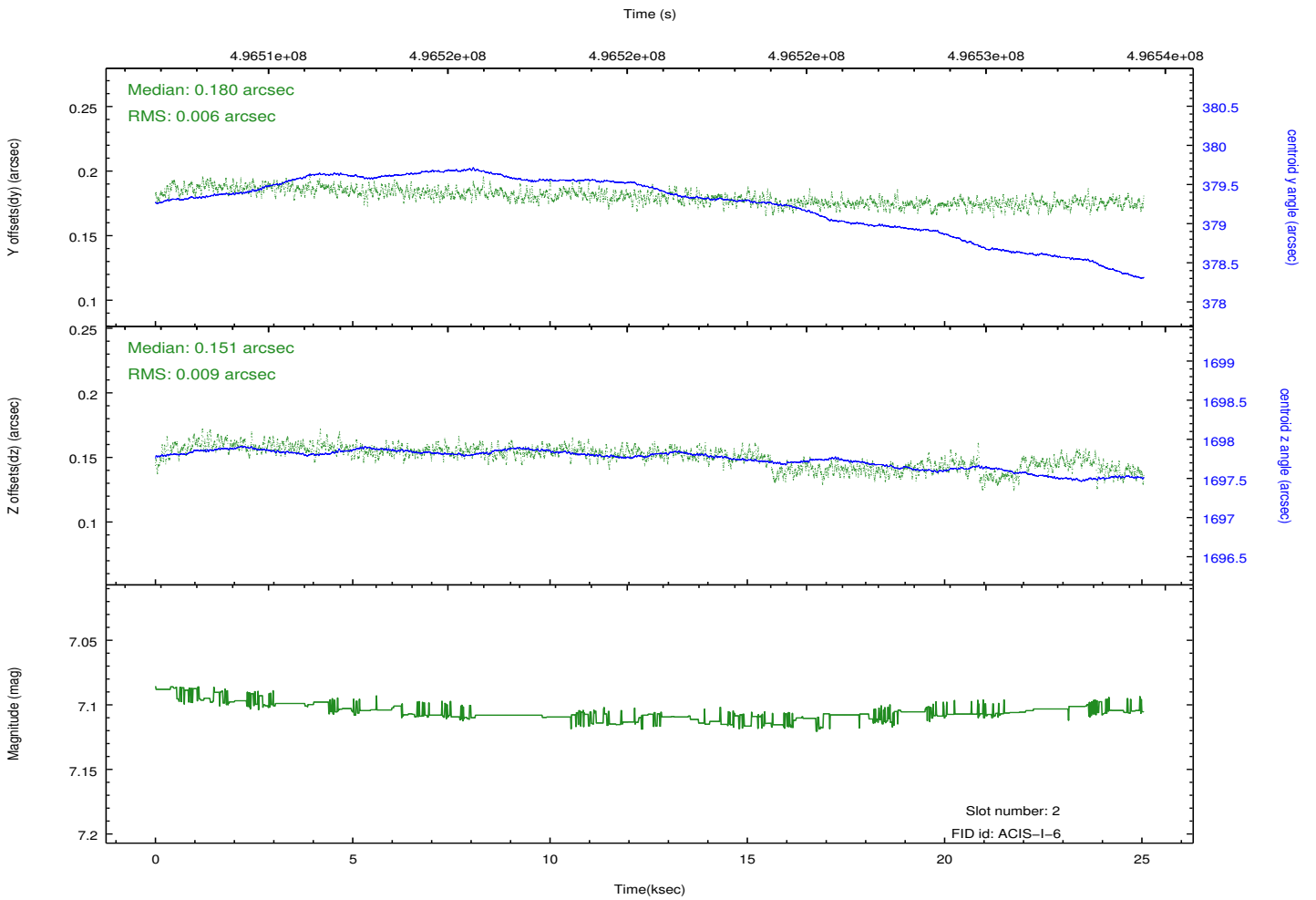
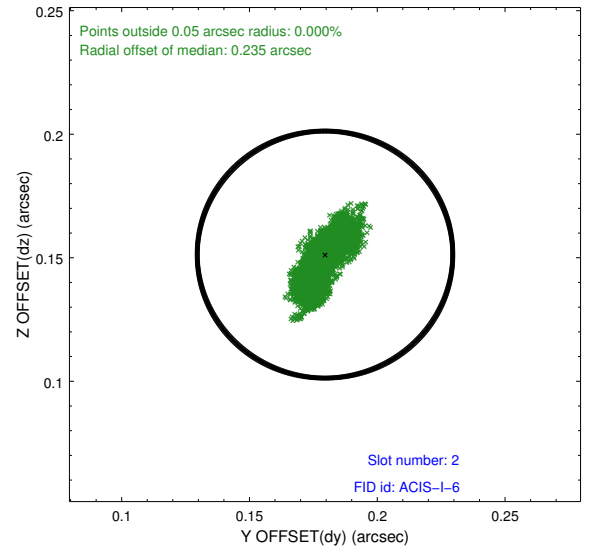
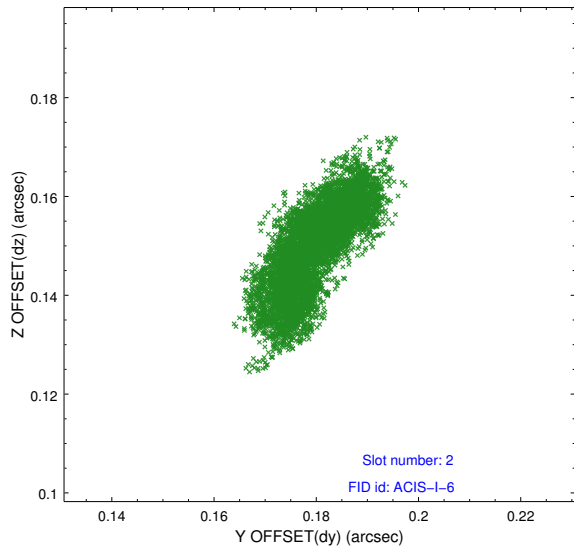
2.5.1 Slot 0



2.5.2 Slot 1



2.5.3 Slot 2



A Summary

A.1 Status

V&V Scientist	Beth Sundheim
V&V Date (YYYY-MM-DD)	2014.12.12
V&V Edition	1
V&V Disposition and Status	OK
V&V Charge Time	24.260477075875

A.2 Comments

These data have been reprocessed with new aspect alignment calibration files that correct small mean offsets (up to 0.4 arcsecs) and improve overall astrometric accuracy. The new calibration was determined using data from the time period being reprocessed and was performed using cross-correlation of X-ray sources with radio and optical counterparts.