

V&V Reference Report

L2 ASCDS Version : 10.2.1

Observation 16437 - L2 Version 3
Chandra X-Ray Center

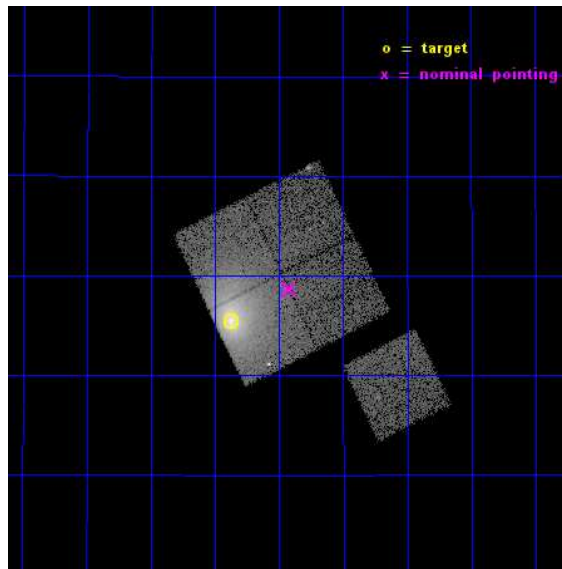
L2 Processing Date : Dec 11 2014

Contents

1	Front	2
2	OBI	3
2.1	OBI	3
2.1.1	Images	3
2.1.2	Bias	3
2.1.3	Parameters	4
2.1.4	Events	4
2.2	Compared Parameters	5
2.3	Aspect	6
2.4	Star Slots	9
2.4.1	Slot 3	9
2.4.2	Slot 4	10
2.4.3	Slot 5	11
2.4.4	Slot 6	12
2.4.5	Slot 7	13
2.5	FID Slots	14
2.5.1	Slot 0	14
2.5.2	Slot 1	15
2.5.3	Slot 2	16
A	Summary	17
A.1	Status	17
A.2	Comments	17

1 Front

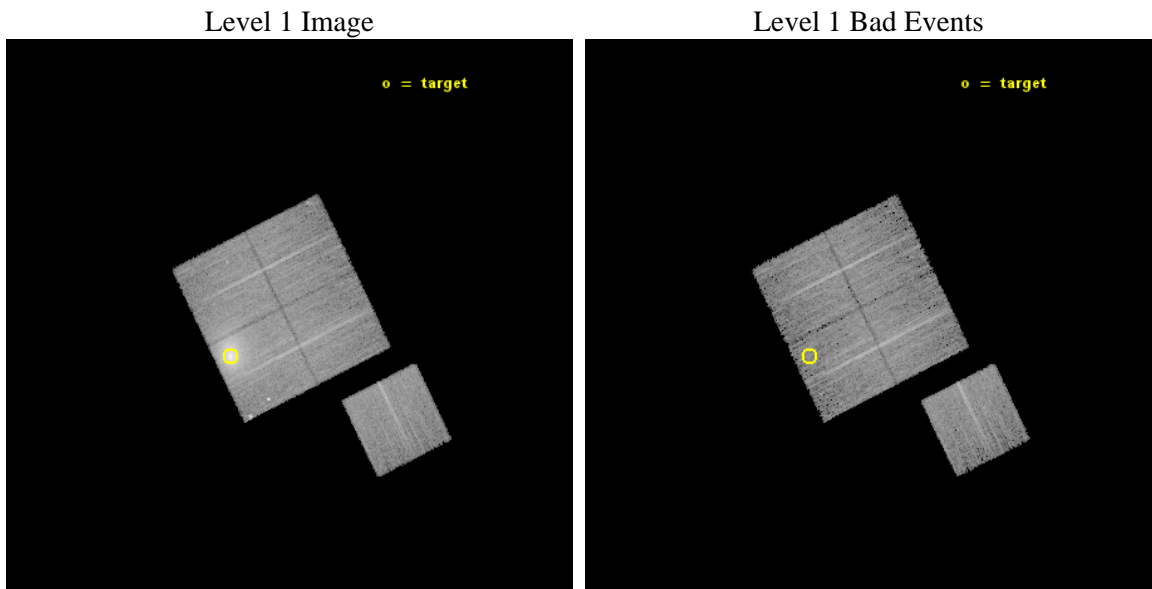
seq_num	890084	Sequence number
obs_id	16437	Observation id
title	AO-15 Calibration Observations of A1795	Proposal title
observer	Dr. CXC Calibration	Principal investigator
object	A1795	Source name
dtcycle	0	
cycle	P	events from which exps? Prim/Second/Both
ra_targ	207.219583	Observer's specified target RA [deg]
dec_targ	26.590833	Observer's specified target Dec [deg]
ra_nom	207.10499085342	Nominal RA [deg]
dec_nom	26.643911628108	Nominal Dec [deg]
roll_nom	153.70416381052	Nominal Roll [deg]
revision	3	Processing version of data
ontime	14783.177269936	Sum of GTIs [s]
livetime	14590.024175687	Livetime [s]
ontime0	14786.195220292	Sum of GTIs [s]
ontime1	14783.095200002	Sum of GTIs [s]
ontime2	14786.277300298	Sum of GTIs [s]
ontime3	14783.177269936	Sum of GTIs [s]
ontime6	14786.154190421	Sum of GTIs [s]
l2events	120242	Number of level 2 events



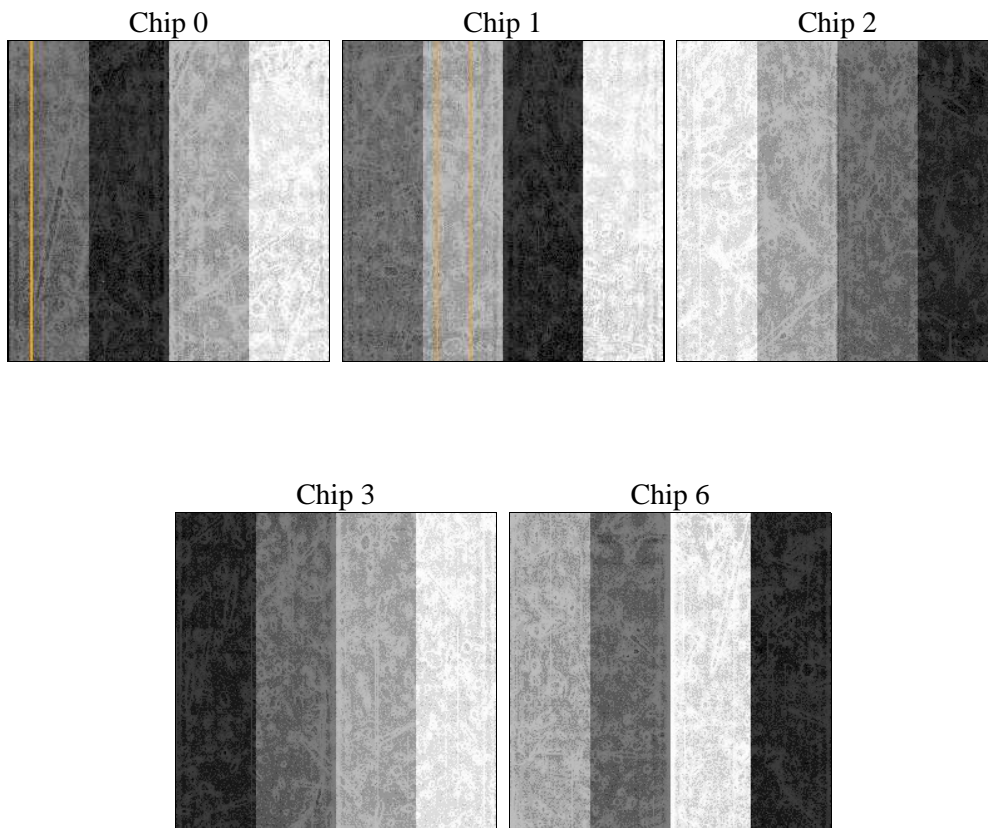
2 OBI

2.1 OBI

2.1.1 Images



2.1.2 Bias



2.1.3 Parameters

obi_num	0	Obi number	sched_exp_time	15008.983000	[s] Scheduled observation exposure time
ascdsver	10.3.1	Processing system revision	ontime	14783.177269936	Sum of GTIs [s]
caldsver	4.6.4	 	ontime0	14786.195220292	Sum of GTIs [s]
date	2014-12-11T05:35:22	Date and time of file creation	ontime1	14783.095200002	Sum of GTIs [s]
revision	3	Processing version of data	ontime2	14786.277300298	Sum of GTIs [s]
			ontime3	14783.177269936	Sum of GTIs [s]
			ontime6	14786.154190421	Sum of GTIs [s]
			l1events	437518	Number of level 1 events

2.1.4 Events

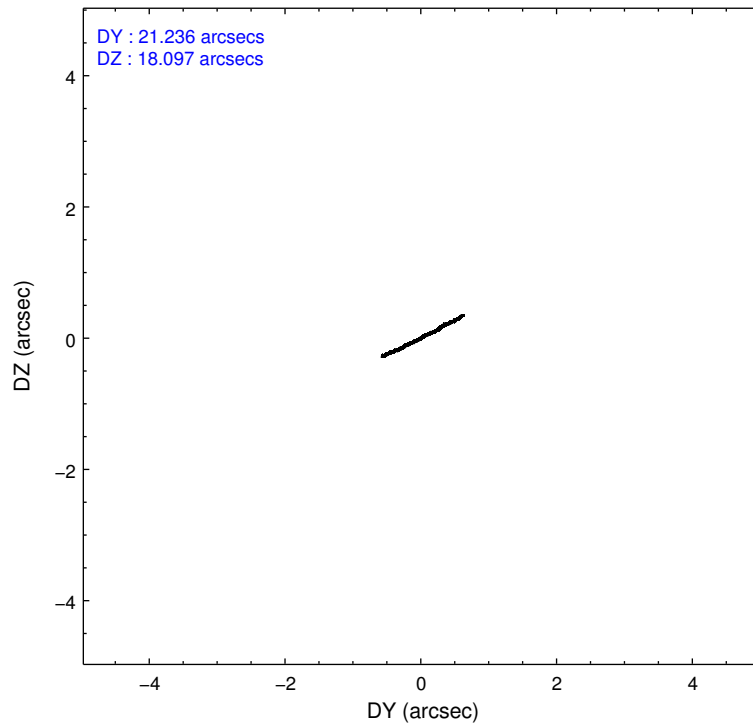
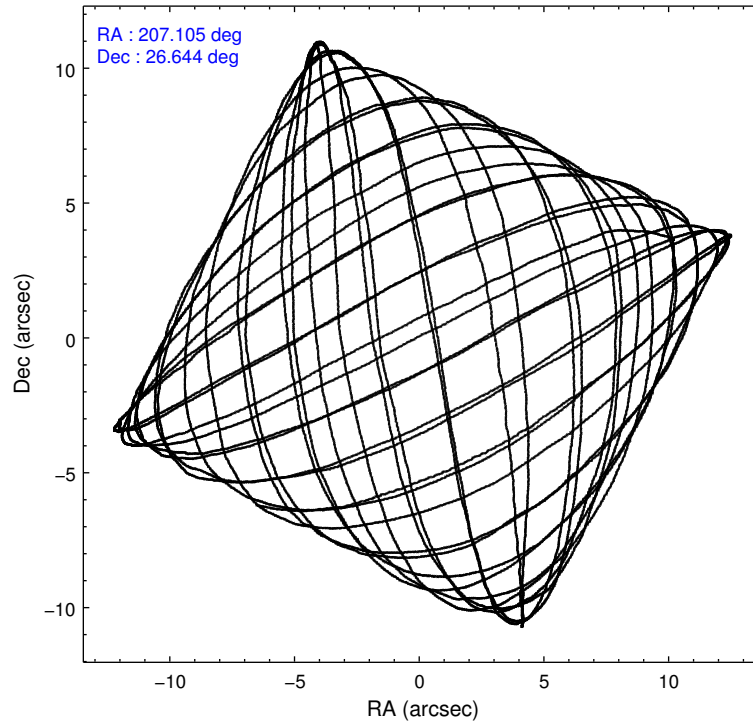
	ccd 0	ccd 1	ccd 2	ccd 3	ccd 6
level 1 events	67622	82110	73214	143512	71060
rejected events	58311	59342	64070	63775	62540
rejected %	86%	72%	87%	44%	88%

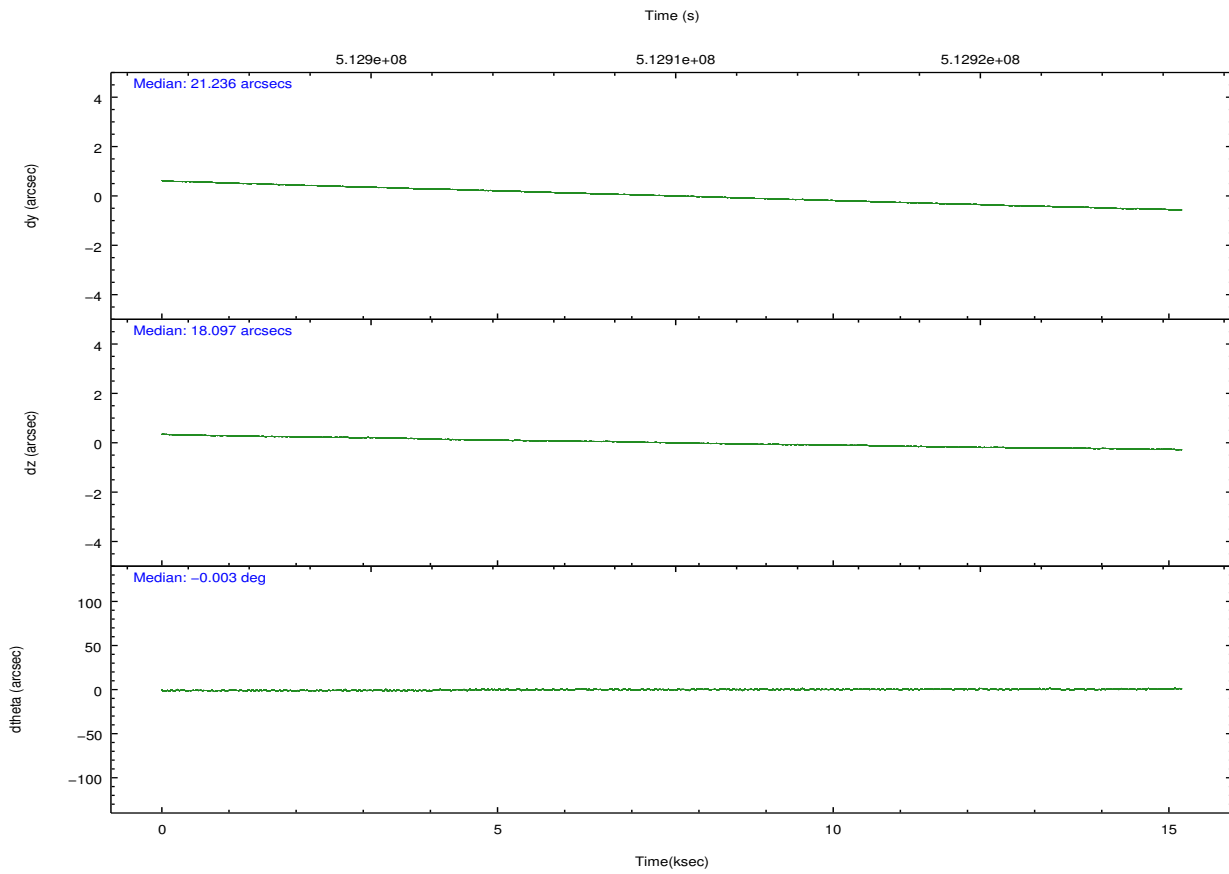
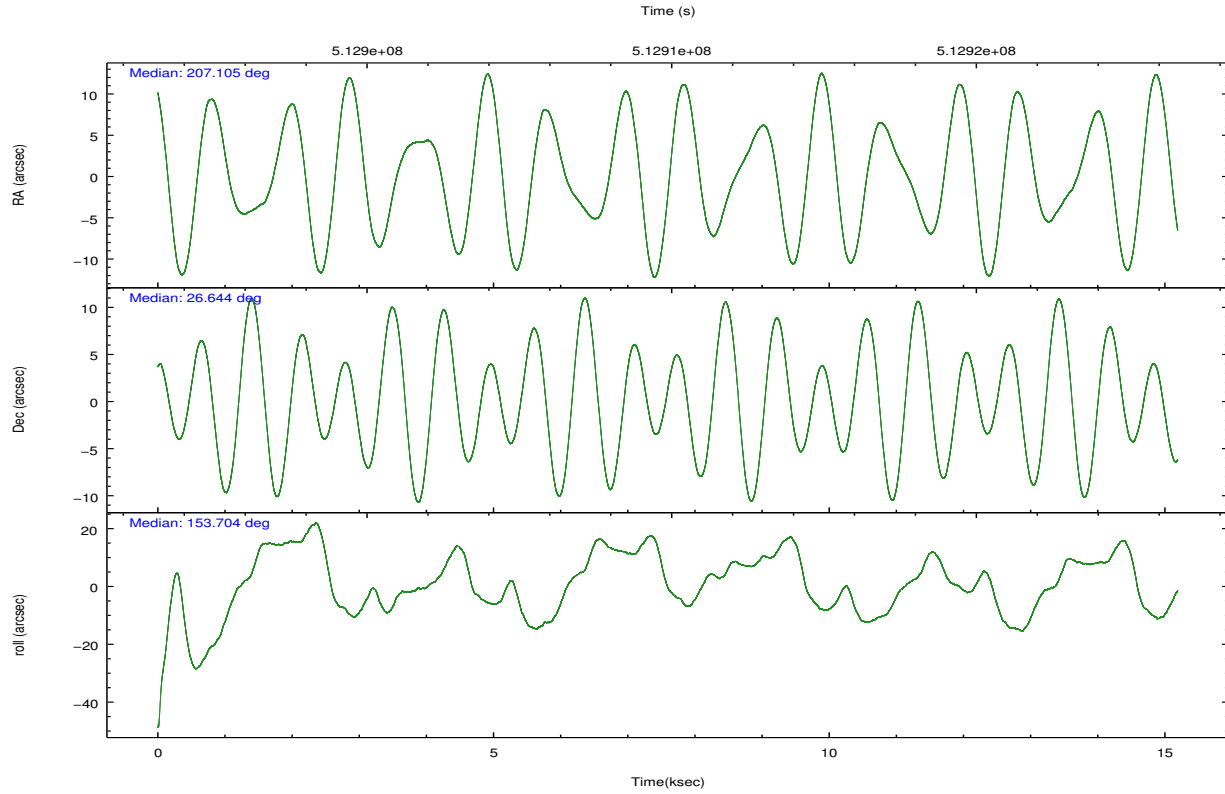
	ccd 0	ccd 1	ccd 2	ccd 3	ccd 6
grade 0 events	3696	13871	3955	59929	2832
	5%	16%	5%	41%	3%
grade 1 events	40	75	33	231	37
	0%	0%	0%	0%	0%
grade 2 events	2078	3676	2002	9342	1956
	3%	4%	2%	6%	2%
grade 3 events	876	1287	831	3347	813
	1%	1%	1%	2%	1%
grade 4 events	845	1301	832	3391	878
	1%	1%	1%	2%	1%
grade 5 events	3287	3543	3078	3915	3464
	4%	4%	4%	2%	4%
grade 6 events	1819	2644	1531	3764	2044
	2%	3%	2%	2%	2%
grade 7 events	54981	55713	60952	59593	59036
	81%	67%	83%	41%	83%

2.2 Compared Parameters

Parameter	Planned	Actual	Parameter	Planned	Actual
Instrument	ACIS	ACIS	Obspar format version number	7	7
Detector	ACIS-01236	ACIS-01236	Obspar file type	PREDICTED	ACTUAL
Grating	NONE	NONE	Obspar update status	NONE	UPDATED
Data mode	VFAINT	VFAINT	Number of optional ACIS chips dropped	0	0
Observation mode	POINTING	POINTING	On-chip summing requested	N	N
[deg] Pointing RA	207.135681	207.1049908534208	Subarray requested	NONE	NONE
[deg] Pointing Dec	26.645798	26.64391162810828	Alternating exposures requested	N	N
[deg] Pointing Roll	153.481713	153.7041638105219	[s] Primary exposure time	0.000000	3.1
[s] Window start time (MET)	512697667.184000	512697667.184000			
[s] Window stop time (MET)	515203267.184000	515203267.184000			
[mm] SIM focus pos	-0.782348	-0.7809083437167272			
[mm] SIM defocus	0	0.001439871863259334			
[mm] SIM translation stage pos	-230.252463	-230.248423740357			
[mm] SIM translation stage offset	-3.34	-3.34402926257269			
[s] Observation start time (MET)	512902517.184000	512902140.64574			
Observation start date	2014-04-03T08:54:10	2014-04-03T08:49:00			
[s] Observation end time (MET)	512917526.184000	512917762.15911			
Observation end date	2014-04-03T13:04:19	2014-04-03T13:09:22			
Read mode	TIMED	TIMED			

2.3 Aspect



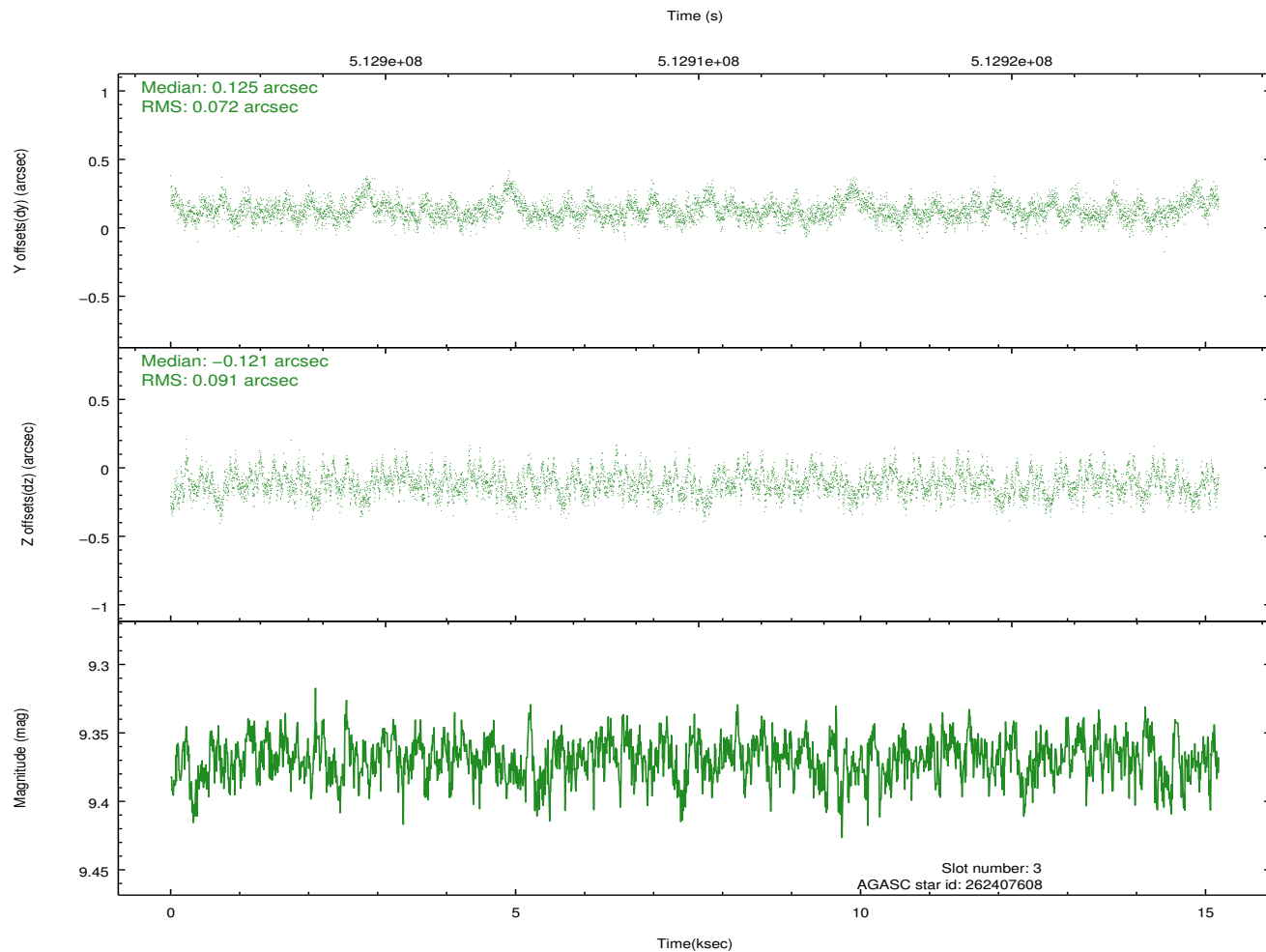
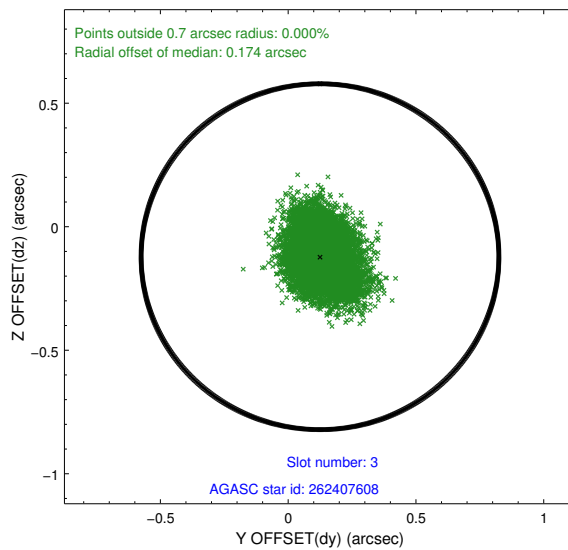
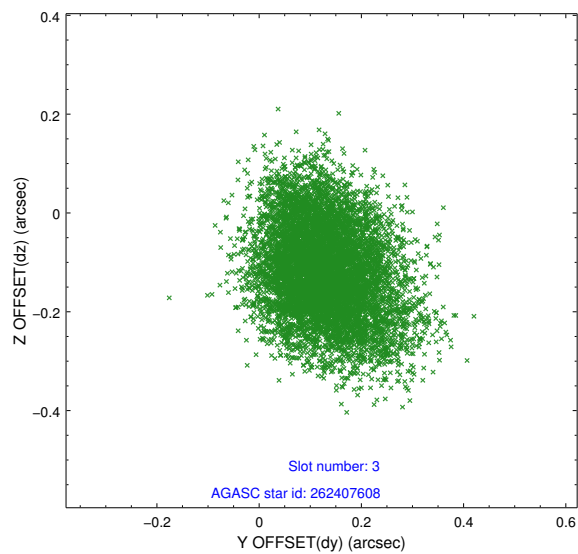


Slot Statistics

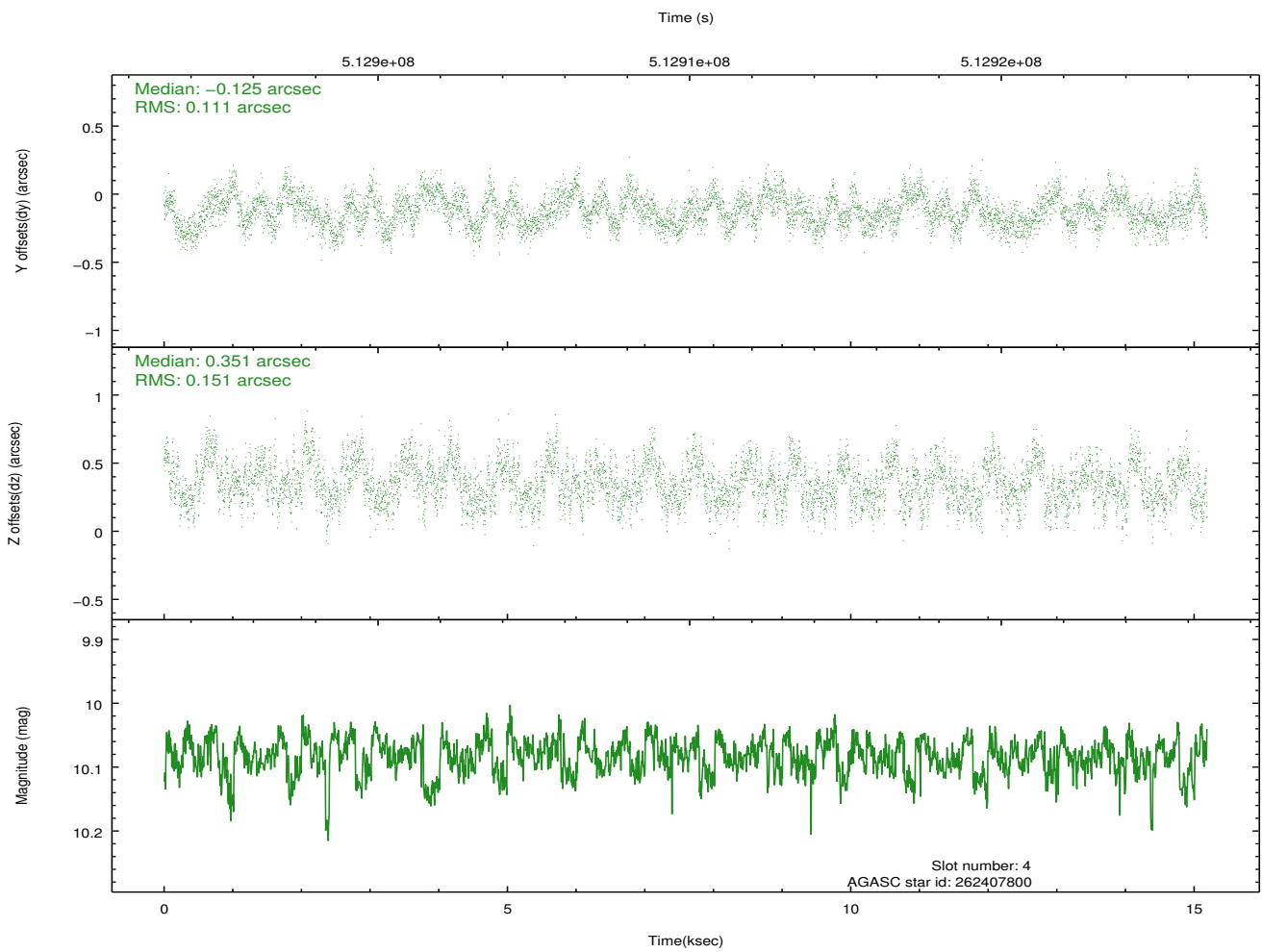
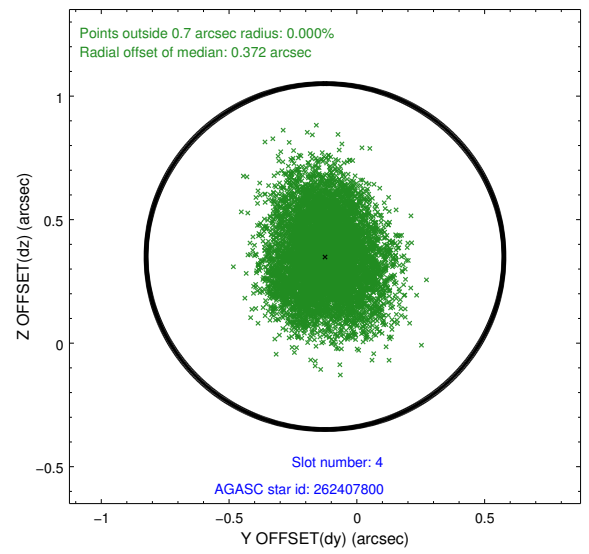
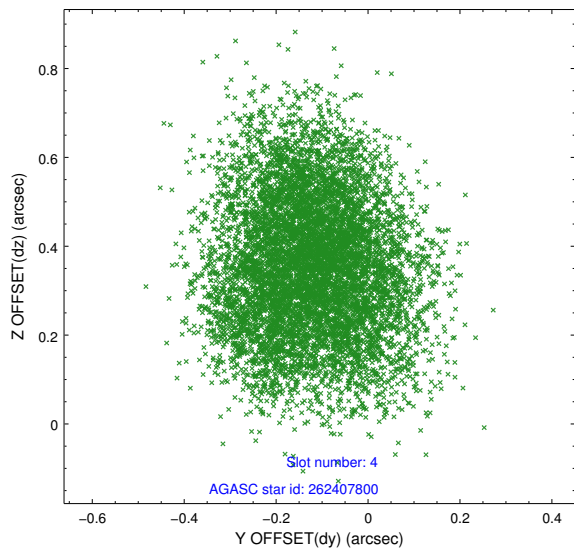
slot	status	used	id	mag	n_pts	med_dy	med_dz	dr1	dr2	ra	dec	mean_y	mean_z
0	FID		ACIS-I-1	7.22	3705	0.107	-0.082	0.013	0.028	0.000000	0.000000	918.11	-910.43
1	FID		ACIS-I-5	7.22	3705	-0.300	0.078	0.008	0.015	0.000000	0.000000	-1830.28	986.99
2	FID		ACIS-I-6	7.22	3705	0.102	0.073	0.012	0.020	0.000000	0.000000	383.27	1631.87
3	GUIDE	used	262407608	9.37	7409	0.125	-0.121	0.124	0.203	207.378401	26.435507	-1037.44	327.53
4	GUIDE	used	262407800	10.08	7399	-0.125	0.351	0.203	0.316	207.321181	27.251762	445.28	-2215.15
5	GUIDE	used	262408096	9.33	7401	-0.001	-0.163	0.178	0.260	207.011678	26.515421	148.96	597.98
6	GUIDE	used	262408936	9.61	7401	-0.053	0.018	0.243	0.404	207.154731	26.726554	75.07	-287.08
7	GUIDE	used	262411960	9.65	7405	0.039	-0.086	0.145	0.257	207.327895	25.881727	-1784.56	2183.07

2.4 Star Slots

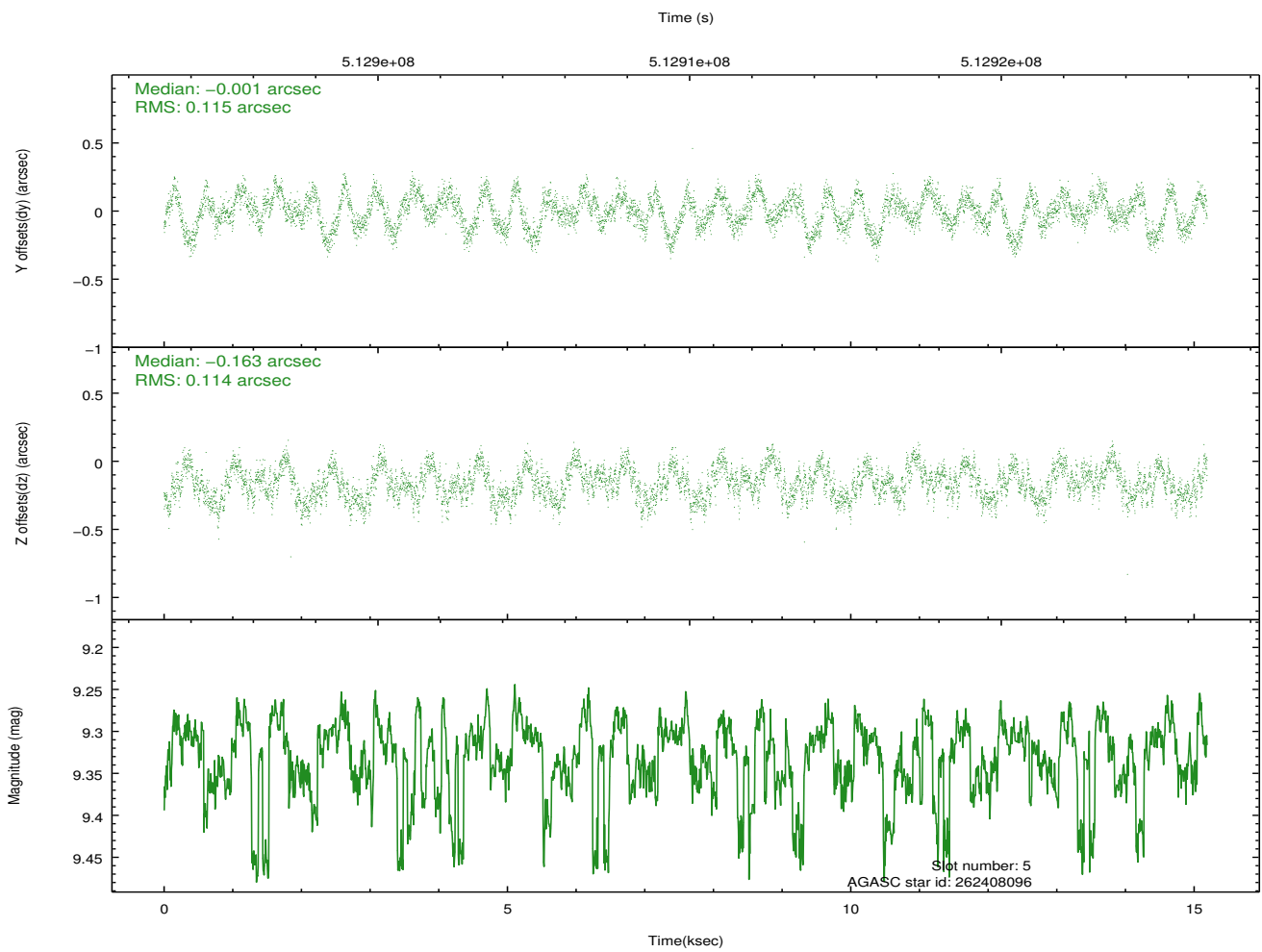
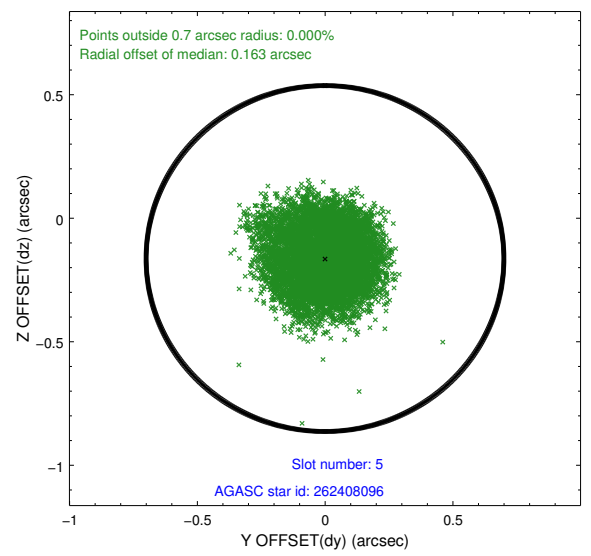
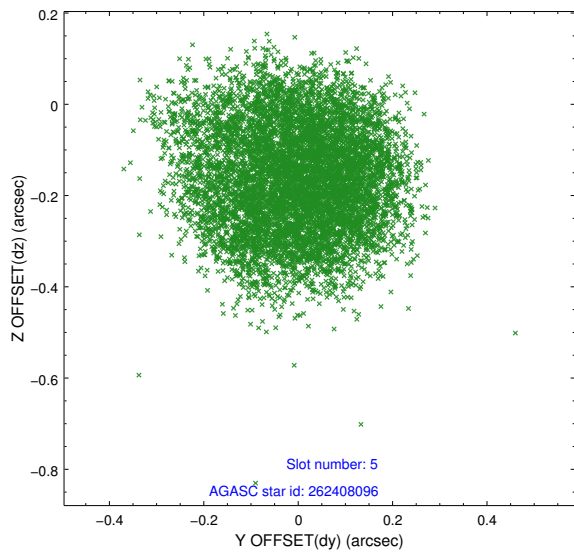
2.4.1 Slot 3



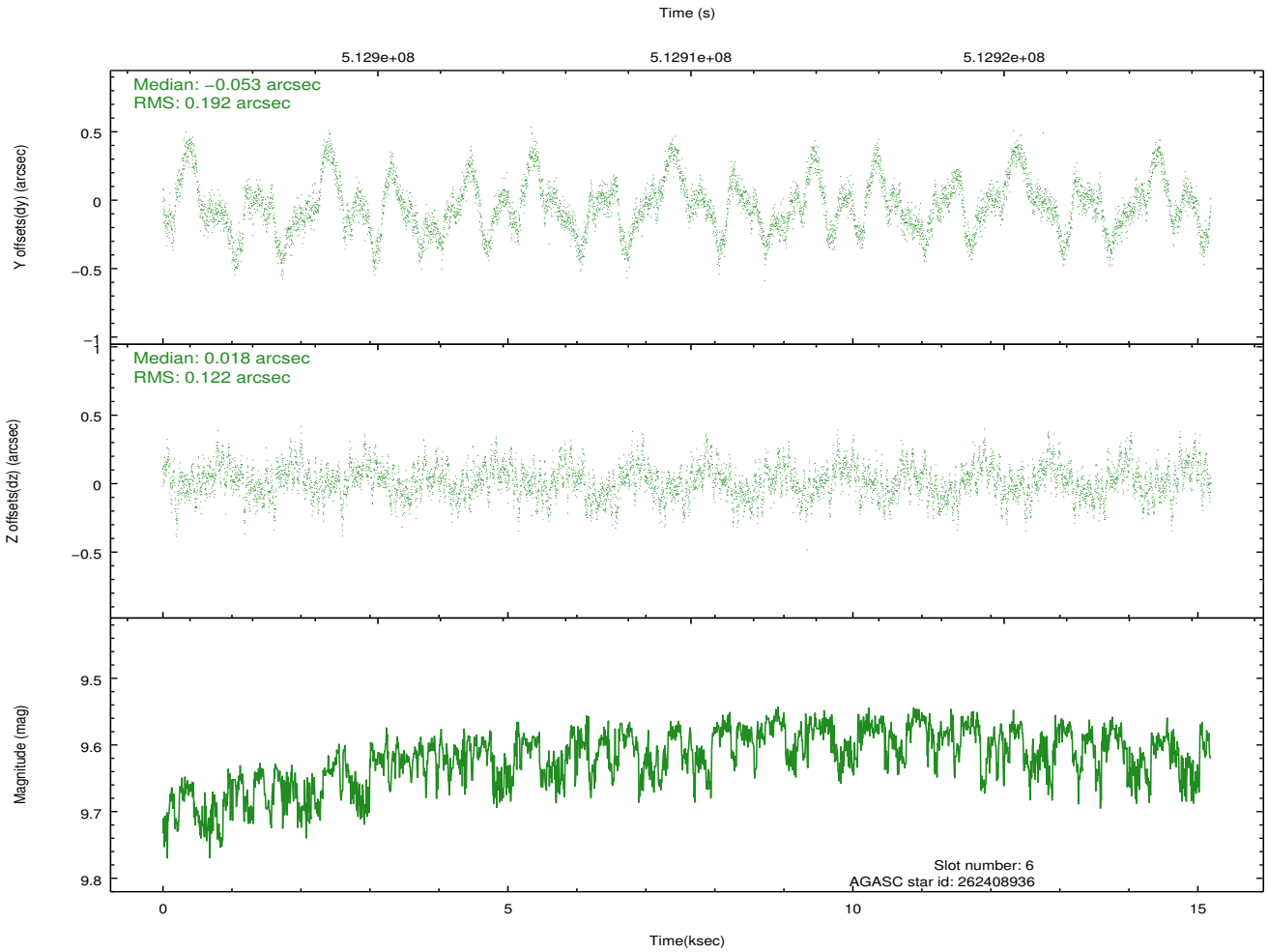
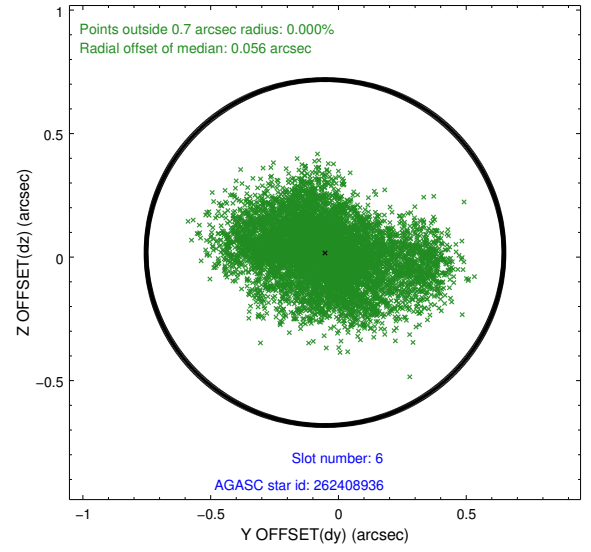
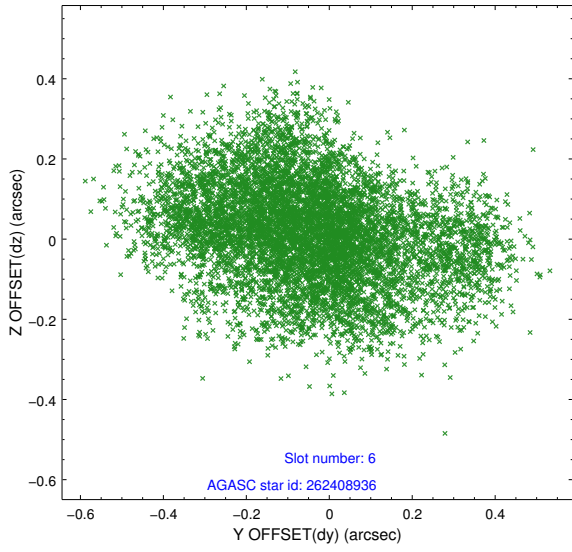
2.4.2 Slot 4



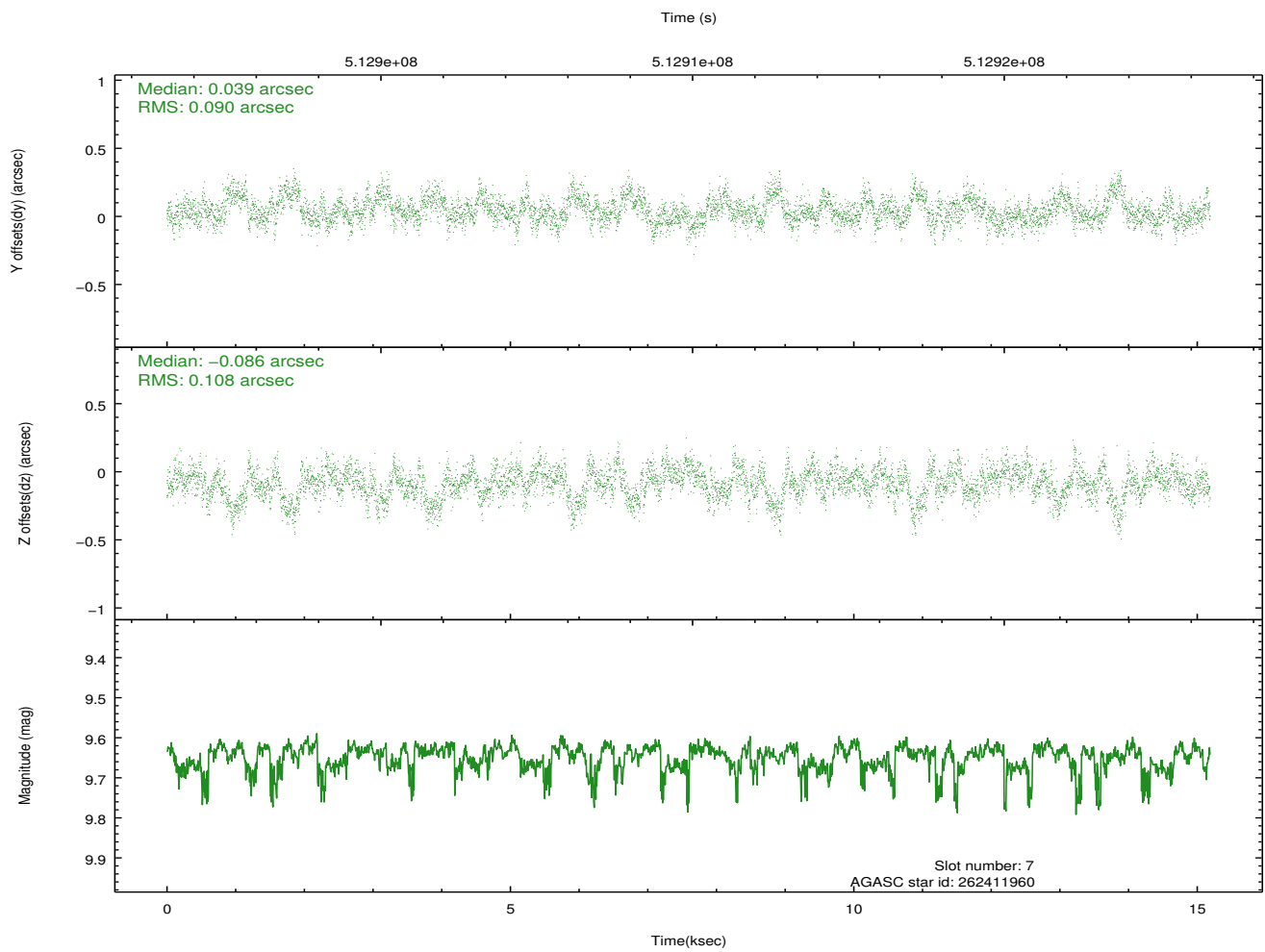
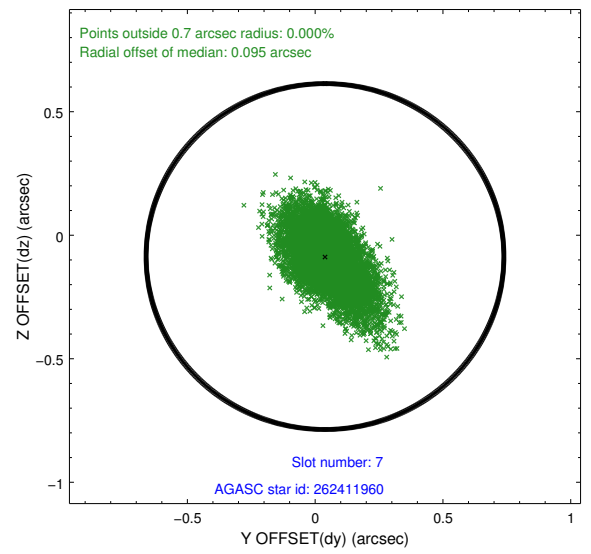
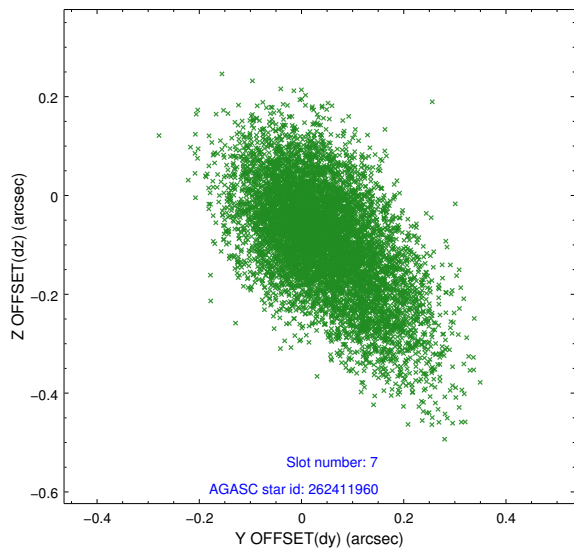
2.4.3 Slot 5



2.4.4 Slot 6

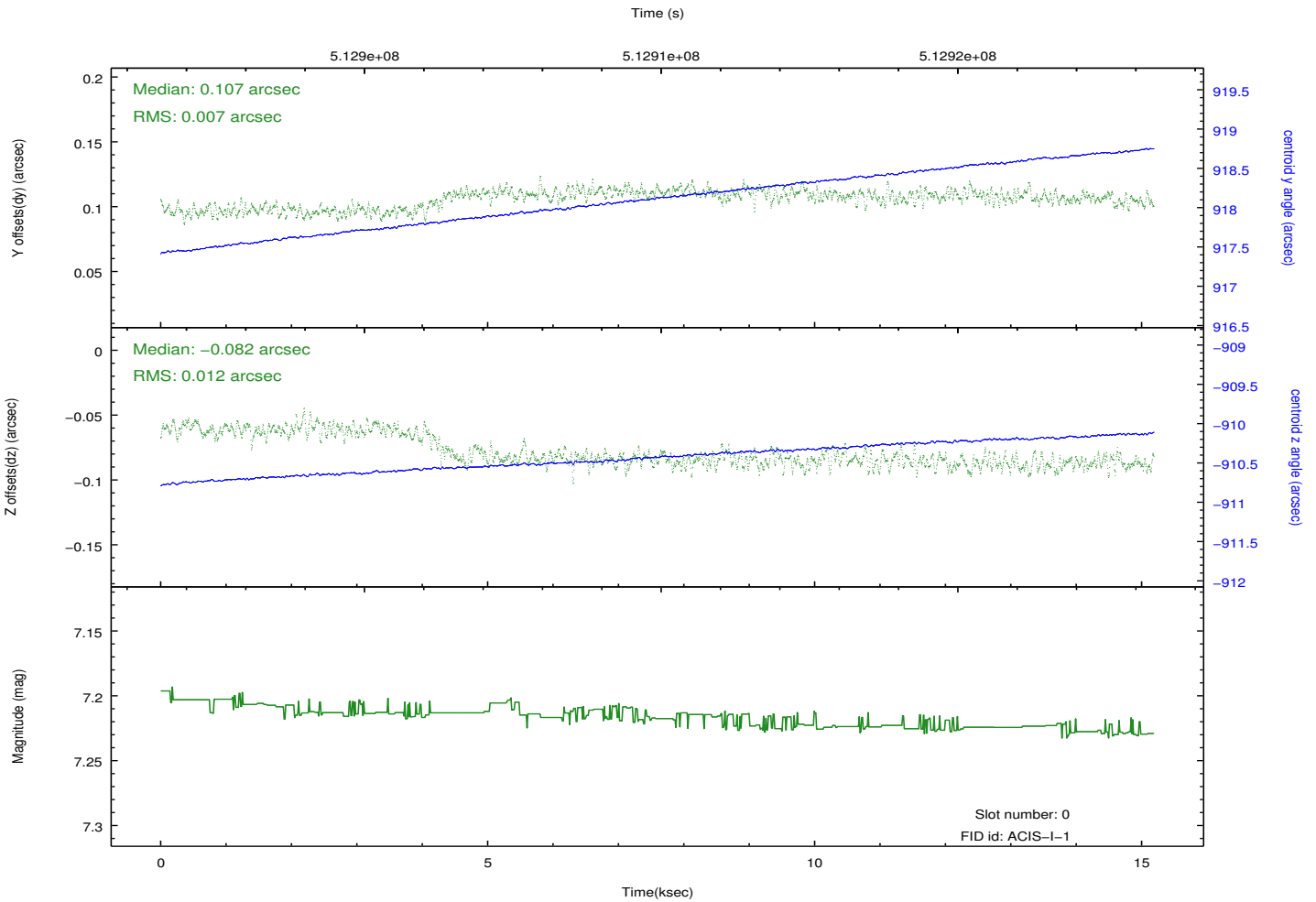
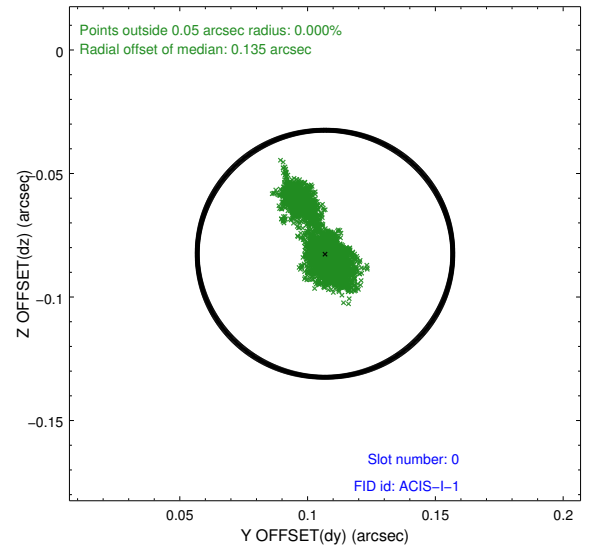
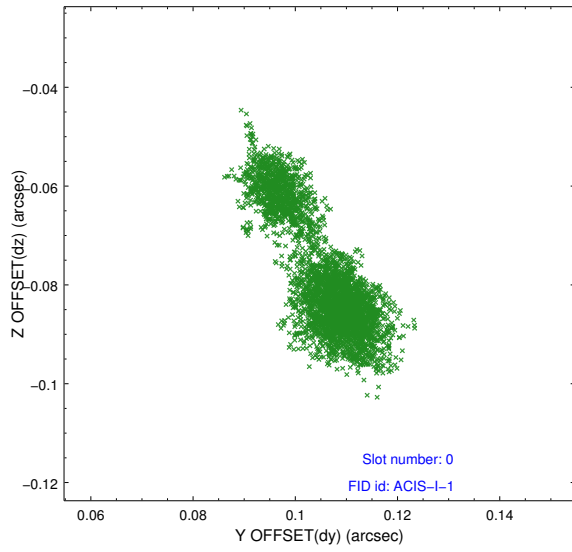


2.4.5 Slot 7

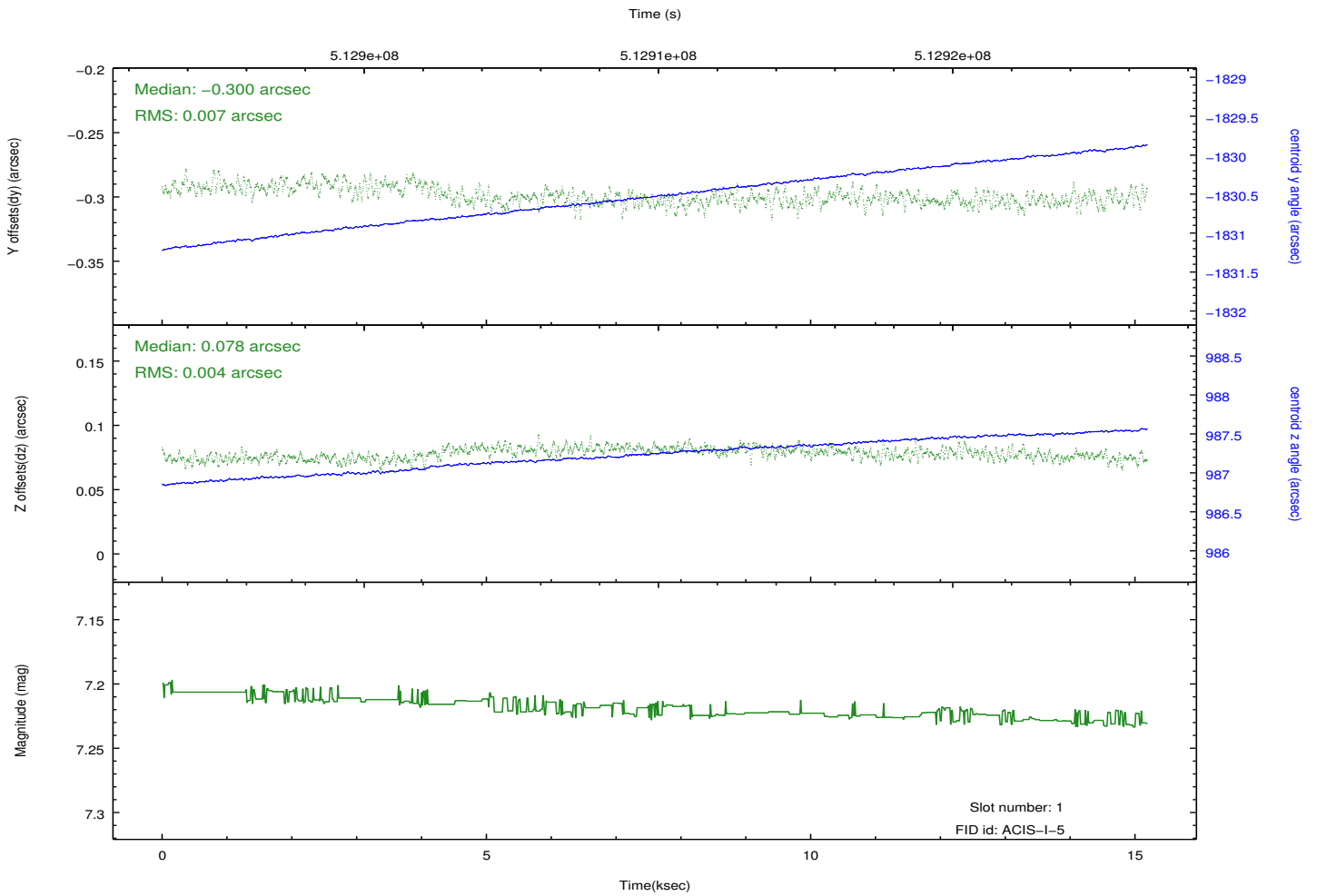
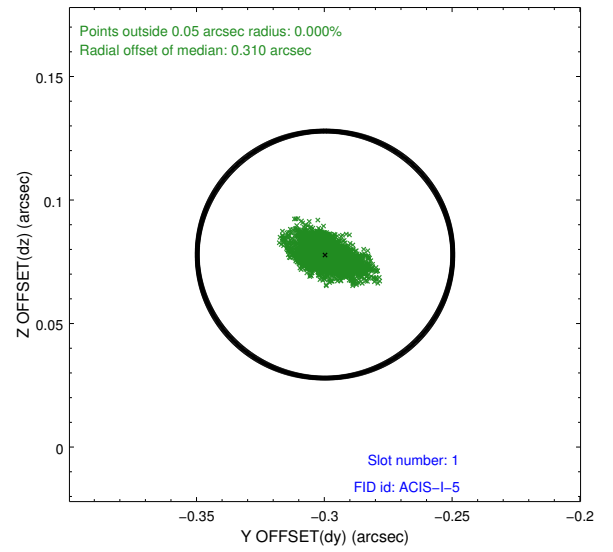
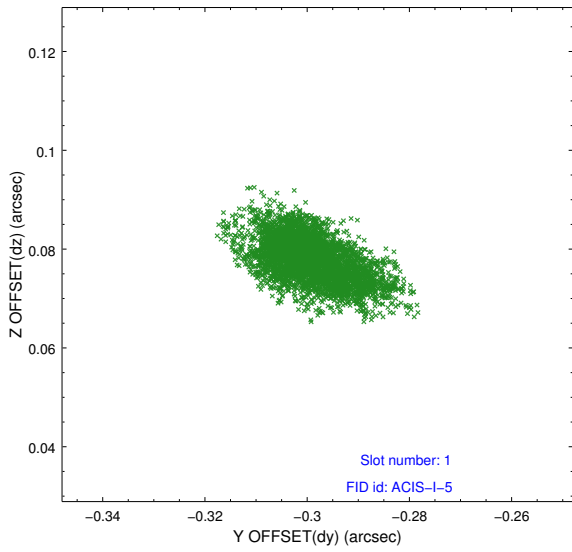


2.5 FID Slots

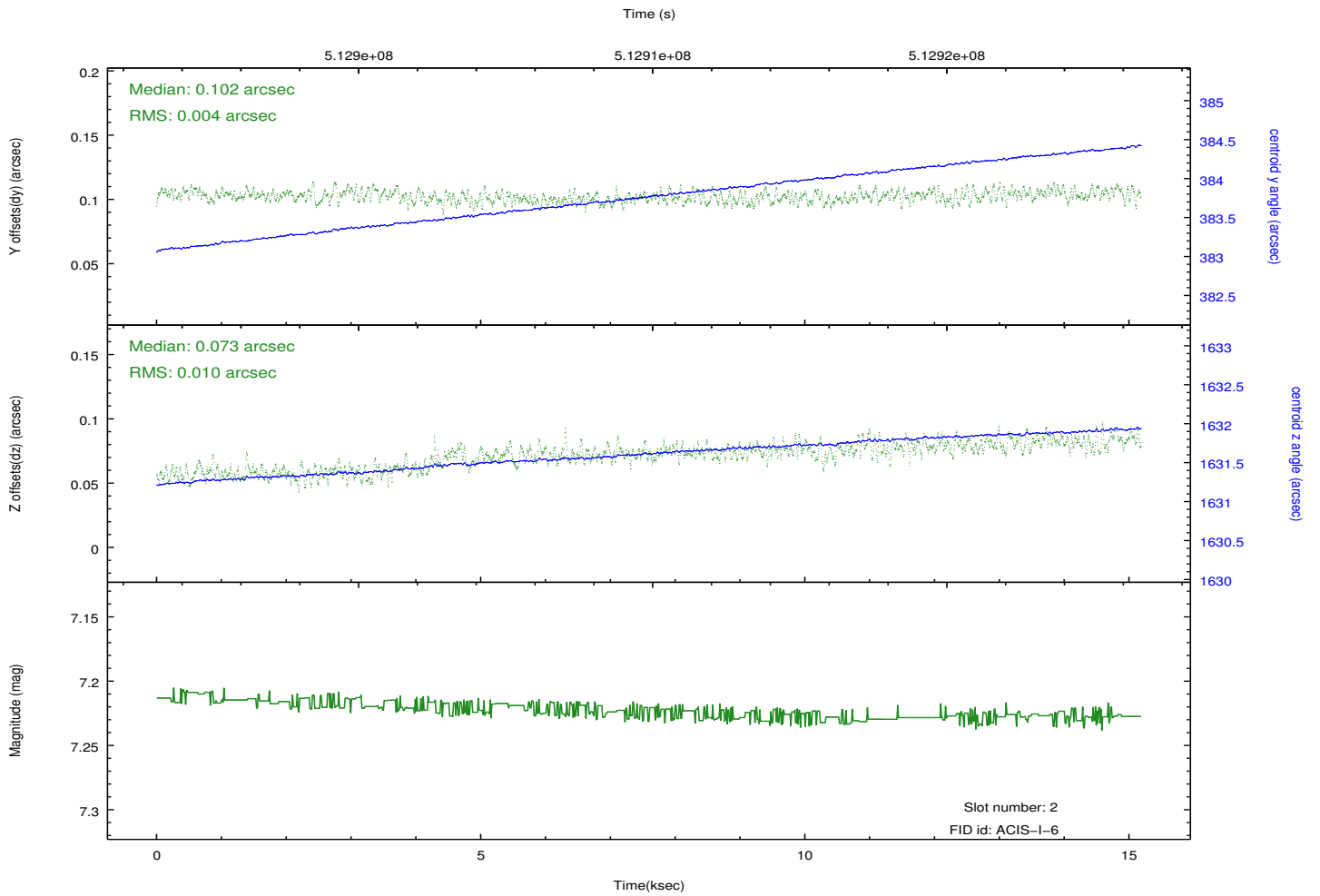
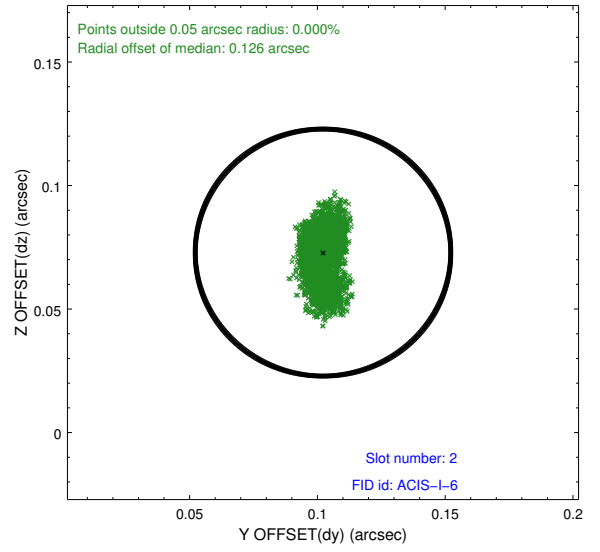
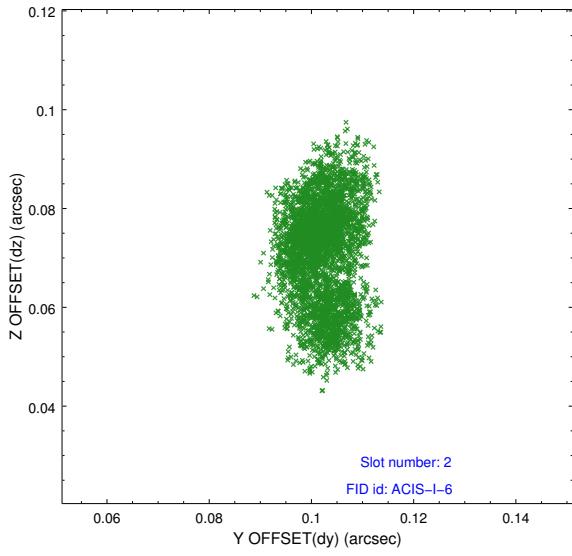
2.5.1 Slot 0



2.5.2 Slot 1



2.5.3 Slot 2



A Summary

A.1 Status

V&V Scientist	Beth Sundheim
V&V Date (YYYY-MM-DD)	2014.12.18
V&V Edition	1
V&V Disposition and Status	OK
V&V Charge Time	14.783177269936

A.2 Comments

Window preference met.

These data have been reprocessed with new aspect alignment calibration files that correct small mean offsets (up to 0.4 arcsecs) and improve overall astrometric accuracy. The new calibration was determined using data from the time period being reprocessed and was performed using cross-correlation of X-ray sources with radio and optical counterparts.