

V&V Reference Report

L2 ASCDS Version : 10.2.1

Observation 16467 - L2 Version 2
Chandra X-Ray Center

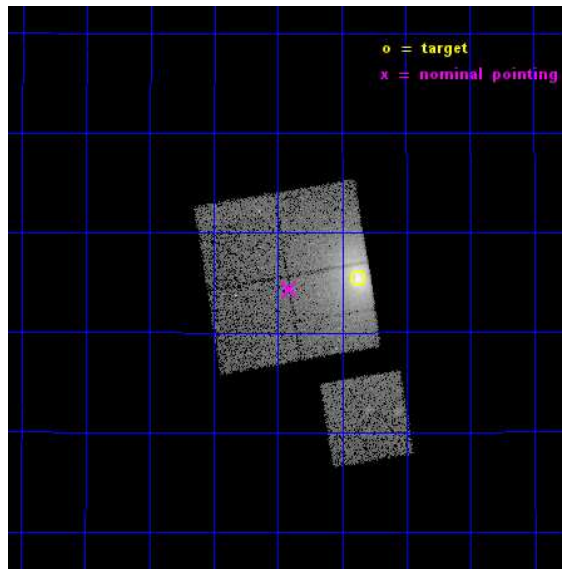
L2 Processing Date : Dec 10 2014

Contents

1	Front	2
2	OBI	3
2.1	OBI	3
2.1.1	Images	3
2.1.2	Bias	3
2.1.3	Parameters	4
2.1.4	Events	4
2.2	Compared Parameters	5
2.3	Aspect	6
2.4	Star Slots	9
2.4.1	Slot 3	9
2.4.2	Slot 4	10
2.4.3	Slot 5	11
2.4.4	Slot 6	12
2.4.5	Slot 7	13
2.5	FID Slots	14
2.5.1	Slot 0	14
2.5.2	Slot 1	15
2.5.3	Slot 2	16
A	Summary	17
A.1	Status	17
A.2	Comments	17

1 Front

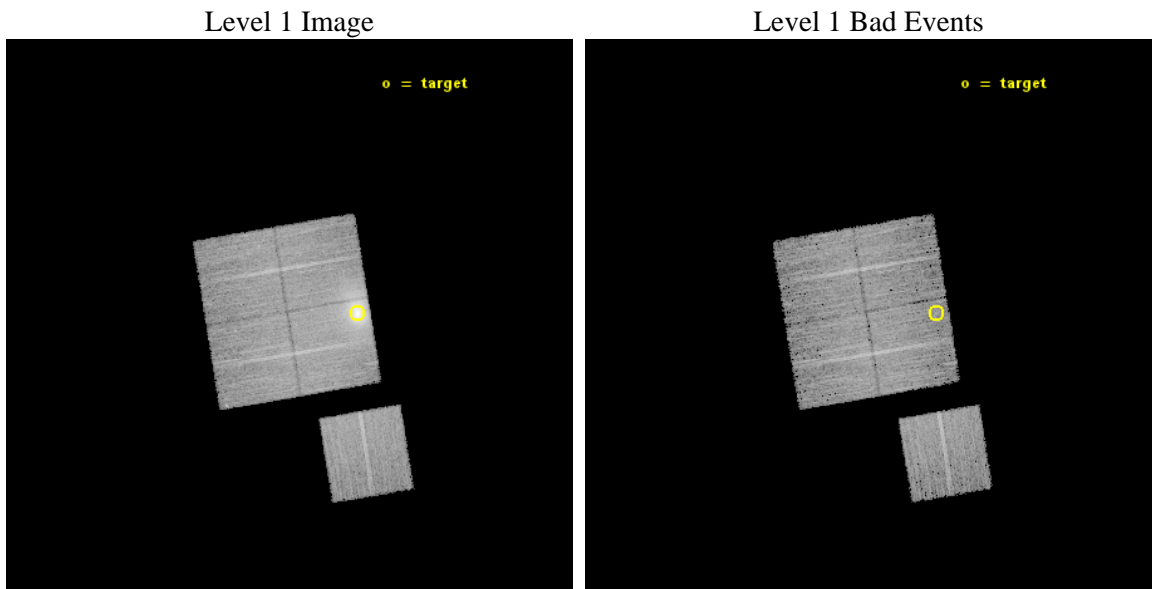
seq_num	890089	Sequence number
obs_id	16467	Observation id
title	AO-15 Calibration Observations of A1795	Proposal title
observer	Dr. CXC Calibration	Principal investigator
object	A1795	Source name
dtcycle	0	
cycle	P	events from which exps? Prim/Second/Both
ra_targ	207.219583	Observer's specified target RA [deg]
dec_targ	26.590833	Observer's specified target Dec [deg]
ra_nom	207.35285710914	Nominal RA [deg]
dec_nom	26.572282052452	Nominal Dec [deg]
roll_nom	170.52644836262	Nominal Roll [deg]
revision	2	Processing version of data
ontime	14771.500113606	Sum of GTIs [s]
liveltime	14578.499590002	Livetime [s]
ontime0	14771.500113606	Sum of GTIs [s]
ontime1	14771.500113606	Sum of GTIs [s]
ontime2	14771.500113606	Sum of GTIs [s]
ontime3	14771.500113606	Sum of GTIs [s]
ontime6	14771.500113606	Sum of GTIs [s]
l2events	105196	Number of level 2 events



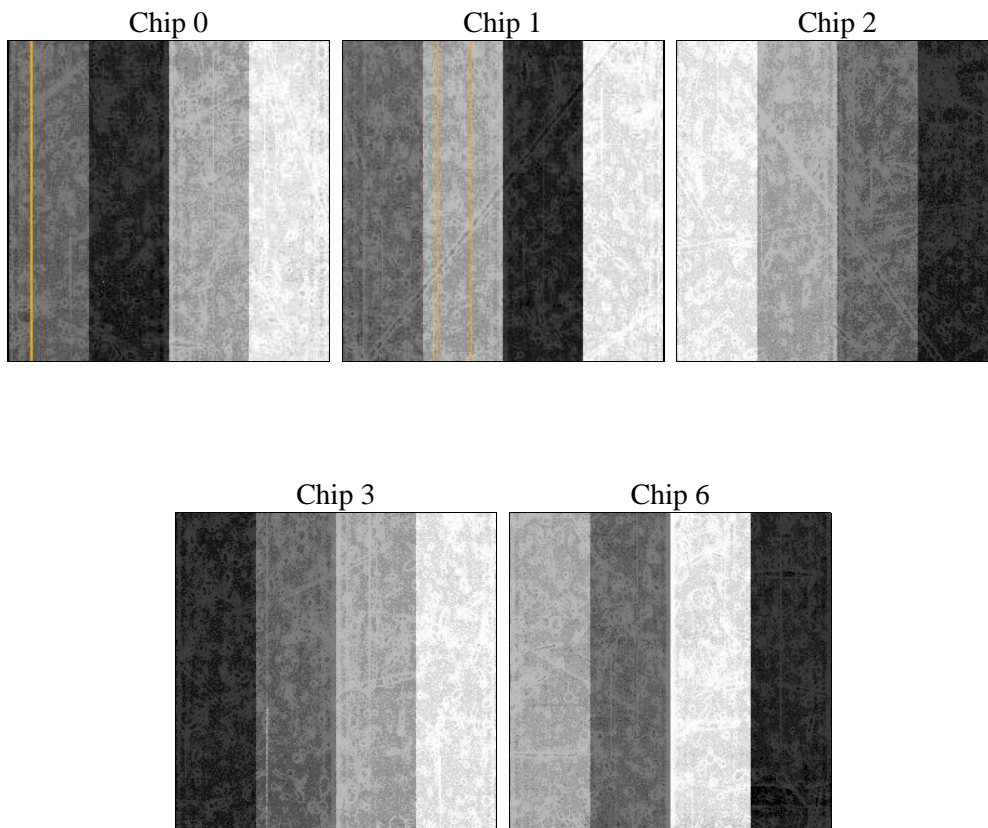
2 OBI

2.1 OBI

2.1.1 Images



2.1.2 Bias



2.1.3 Parameters

obi_num	1	Obi number	sched_exp_time	15000.000000	[s] Scheduled observation exposure time
ascdsver	10.3.1	Processing system revision	ontime	14771.500113606	Sum of GTIs [s]
caldbver	4.6.4	 	ontime0	14771.500113606	Sum of GTIs [s]
date	2014-12-11T02:35:47	Date and time of file creation	ontime1	14771.500113606	Sum of GTIs [s]
revision	2	Processing version of data	ontime2	14771.500113606	Sum of GTIs [s]
			ontime3	14771.500113606	Sum of GTIs [s]
			ontime6	14771.500113606	Sum of GTIs [s]
			l1events	408903	Number of level 1 events

2.1.4 Events

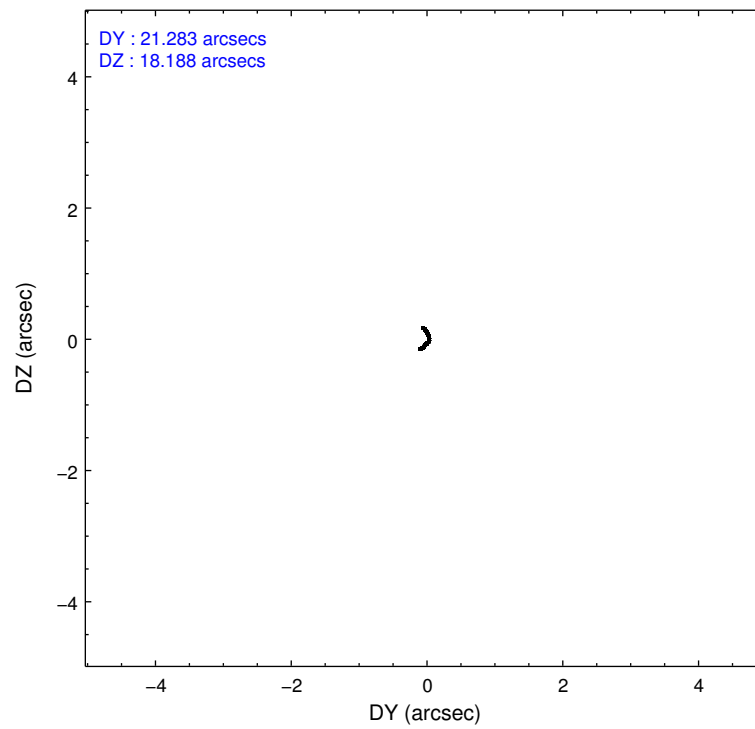
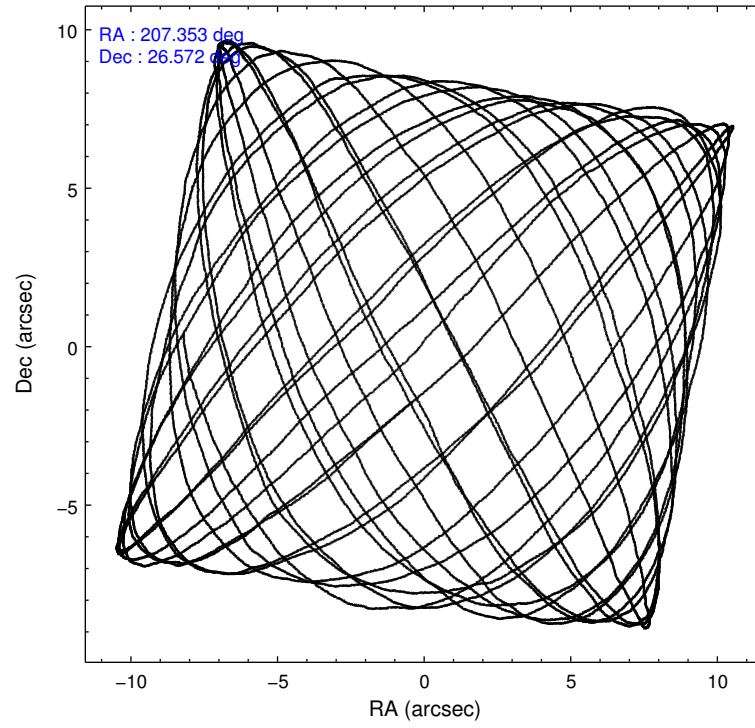
	ccd 0	ccd 1	ccd 2	ccd 3	ccd 6
level 1 events	79084	64509	127931	69507	67872
rejected events	54288	54405	62674	60677	58918
rejected %	68%	84%	48%	87%	86%

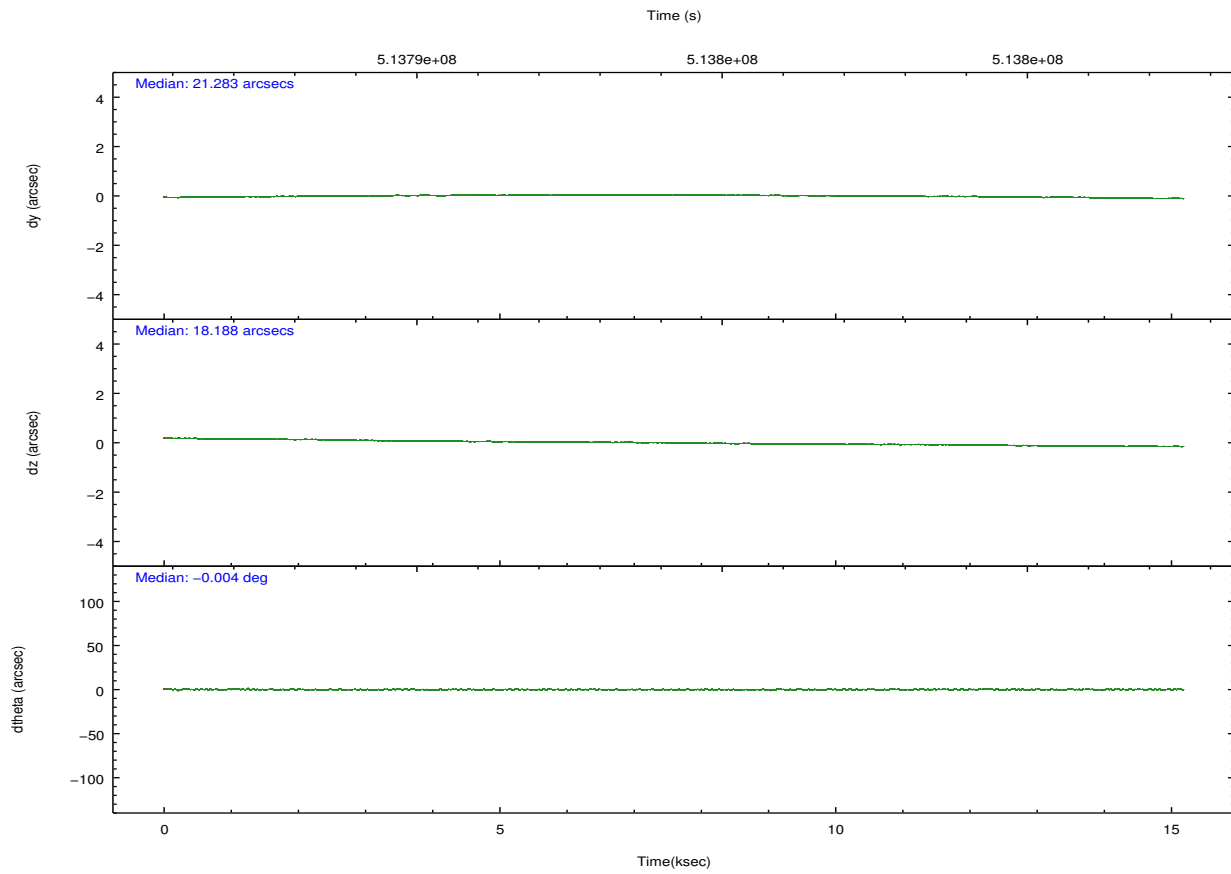
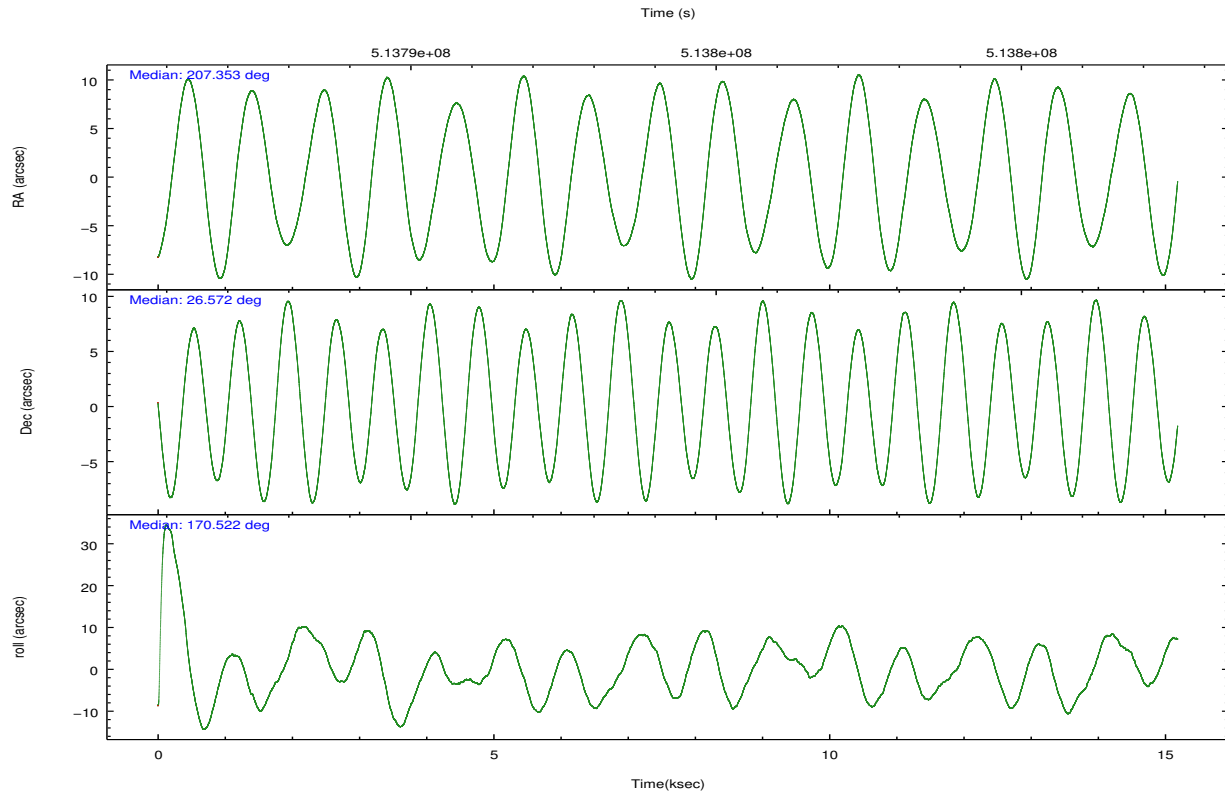
	ccd 0	ccd 1	ccd 2	ccd 3	ccd 6
grade 0 events	15847	4056	48206	3559	3308
	20%	6%	37%	5%	4%
grade 1 events	77	47	178	42	25
	0%	0%	0%	0%	0%
grade 2 events	3888	2192	8243	1865	1921
	4%	3%	6%	2%	2%
grade 3 events	1487	893	2752	822	870
	1%	1%	2%	1%	1%
grade 4 events	1332	930	2862	798	884
	1%	1%	2%	1%	1%
grade 5 events	3426	3558	3283	3823	3514
	4%	5%	2%	5%	5%
grade 6 events	2246	2041	3225	1788	1972
	2%	3%	2%	2%	2%
grade 7 events	50781	50792	59182	56810	55378
	64%	78%	46%	81%	81%

2.2 Compared Parameters

Parameter	Planned	Actual	Parameter	Planned	Actual
Instrument	ACIS	ACIS	Obspar format version number	7	7
Detector	ACIS-01236	ACIS-01236	Obspar file type	PREDICTED	ACTUAL
Grating	NONE	NONE	Obspar update status	NONE	UPDATED
Data mode	VFAINT	VFAINT	Number of optional ACIS chips dropped	0	0
Observation mode	POINTING	POINTING	On-chip summing requested	N	N
[deg] Pointing RA	207.381639	207.3528571091432	Subarray requested	NONE	NONE
[deg] Pointing Dec	26.582063	26.57228205245166	Alternating exposures requested	N	N
[deg] Pointing Roll	170.304932	170.5264483626193	[s] Primary exposure time	0.000000	3.1
[s] Window start time (MET)	512697667.184000	512697667.184000			
[s] Window stop time (MET)	515203267.184000	515203267.184000			
[mm] SIM focus pos	-0.782348	-0.7809083437167272			
[mm] SIM defocus	0	0.001439871863259334			
[mm] SIM translation stage pos	-231.837463	-231.8374710109429			
[mm] SIM translation stage offset	-1.755	-1.754981991986767			
[s] Observation start time (MET)	513786805.184000	513786428.69454			
Observation start date	2014-04-13T14:32:18	2014-04-13T14:27:08			
[s] Observation end time (MET)	513801805.184000	513801938.9954			
Observation end date	2014-04-13T18:42:18	2014-04-13T18:45:38			
Read mode	TIMED	TIMED			

2.3 Aspect





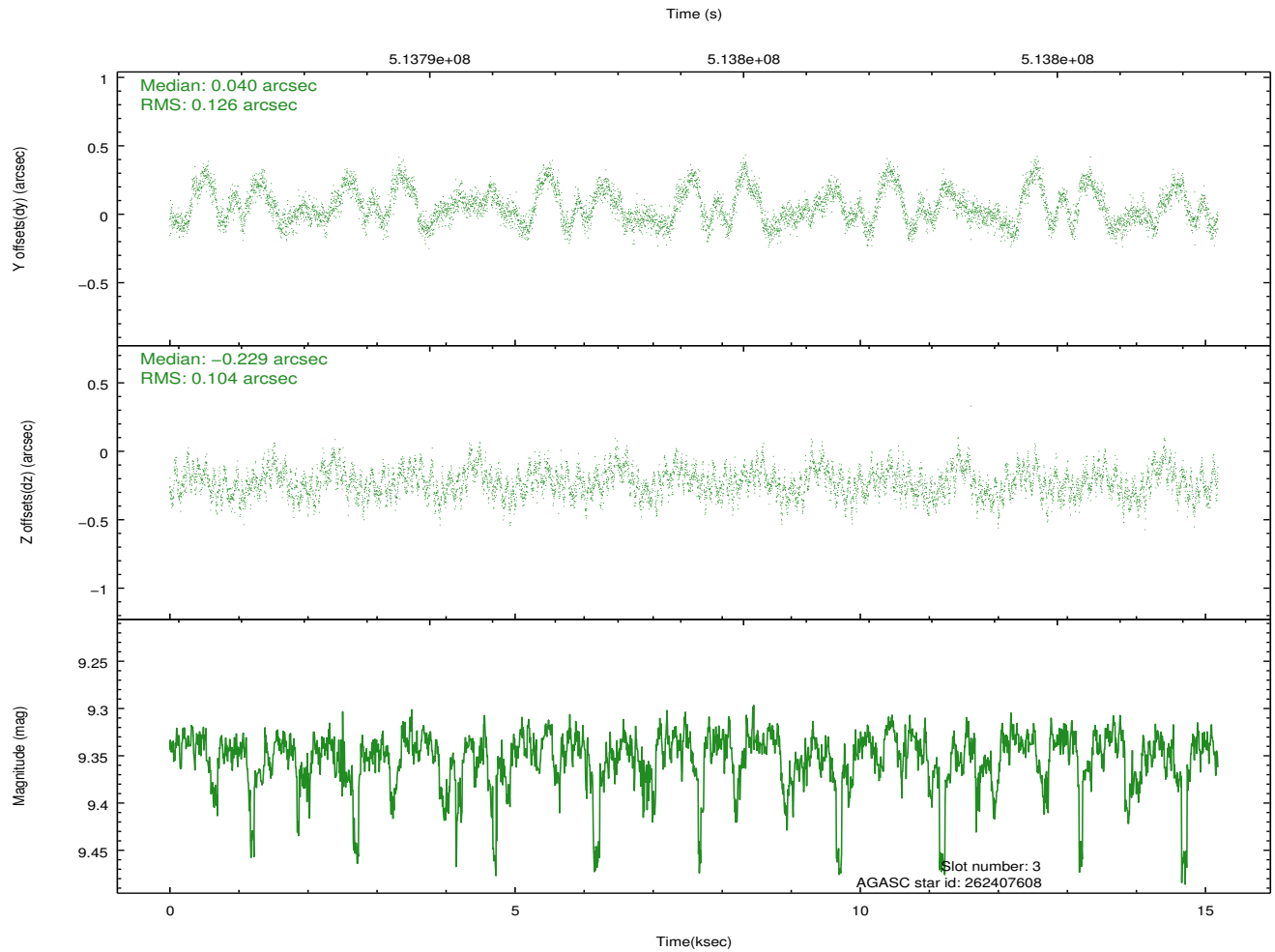
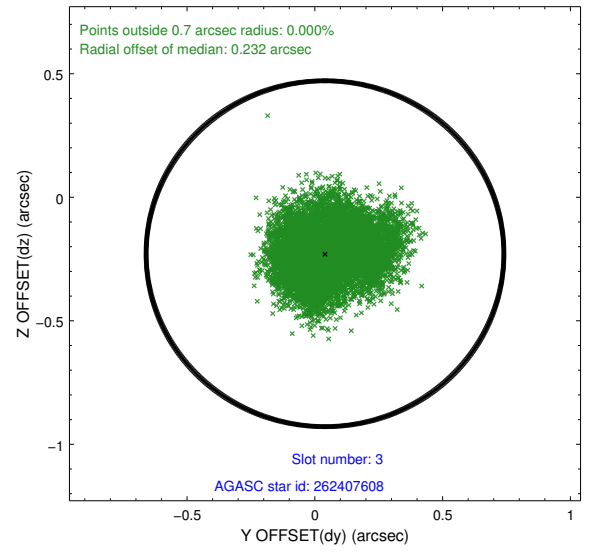
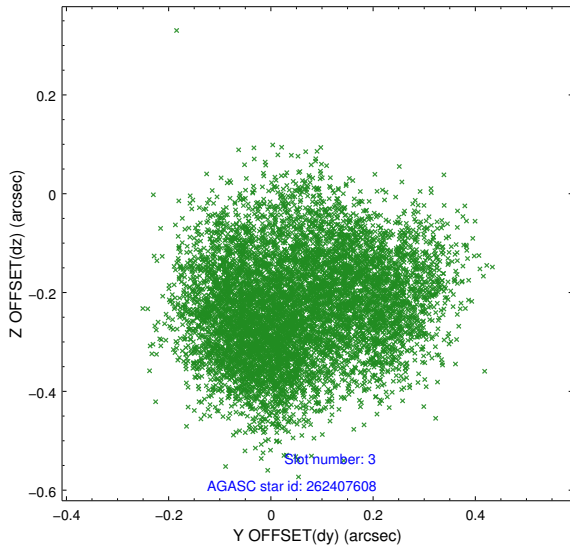
Slot Statistics

slot	status	used	id	mag	n_pts	med_dy	med_dz	dr1	dr2	ra	dec	mean_y	mean_z
0	FID		ACIS-I-1	7.09	3704	0.040	0.019	0.006	0.011	0.000000	0.000000	918.05	-877.76
1	FID		ACIS-I-5	7.09	3704	-0.258	0.038	0.006	0.010	0.000000	0.000000	-1830.26	1019.49
2	FID		ACIS-I-6	7.09	3704	0.126	0.014	0.007	0.011	0.000000	0.000000	383.27	1664.38
3	GUIDE	used	262407608	9.35	7404	0.040	-0.229	0.178	0.268	207.378401	26.435507	-78.39	521.92
4	GUIDE	used	262407800	10.06	7401	-0.138	0.332	0.215	0.358	207.321181	27.251762	599.72	-2342.29
5	GUIDE	used	262408096	9.32	7405	-0.047	-0.225	0.114	0.182	207.011678	26.515421	1135.52	435.20
6	GUIDE	used	262408512	8.00	7407	0.156	0.033	0.095	0.138	207.800210	27.128796	-989.30	-2167.87
7	GUIDE	used	262408936	9.62	7403	-0.042	0.087	0.202	0.308	207.154731	26.726554	806.82	-390.23

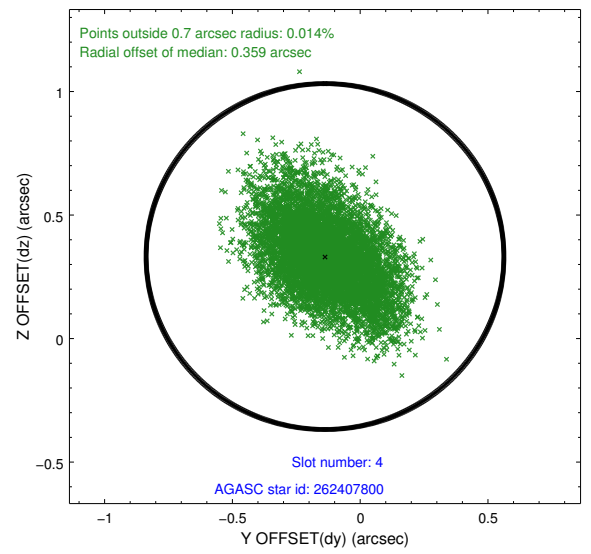
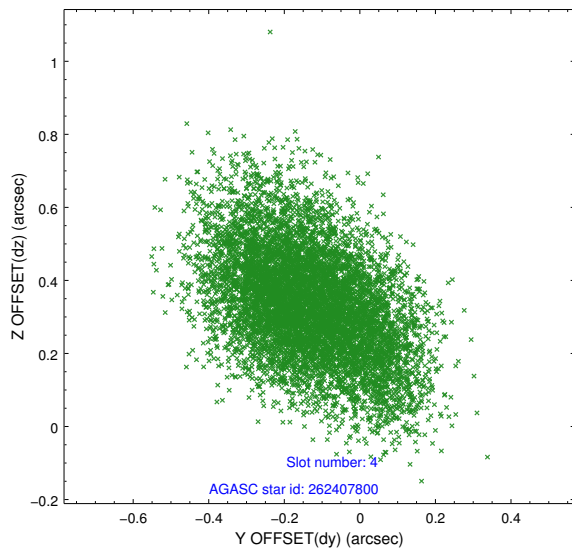
∞

2.4 Star Slots

2.4.1 Slot 3



2.4.2 Slot 4

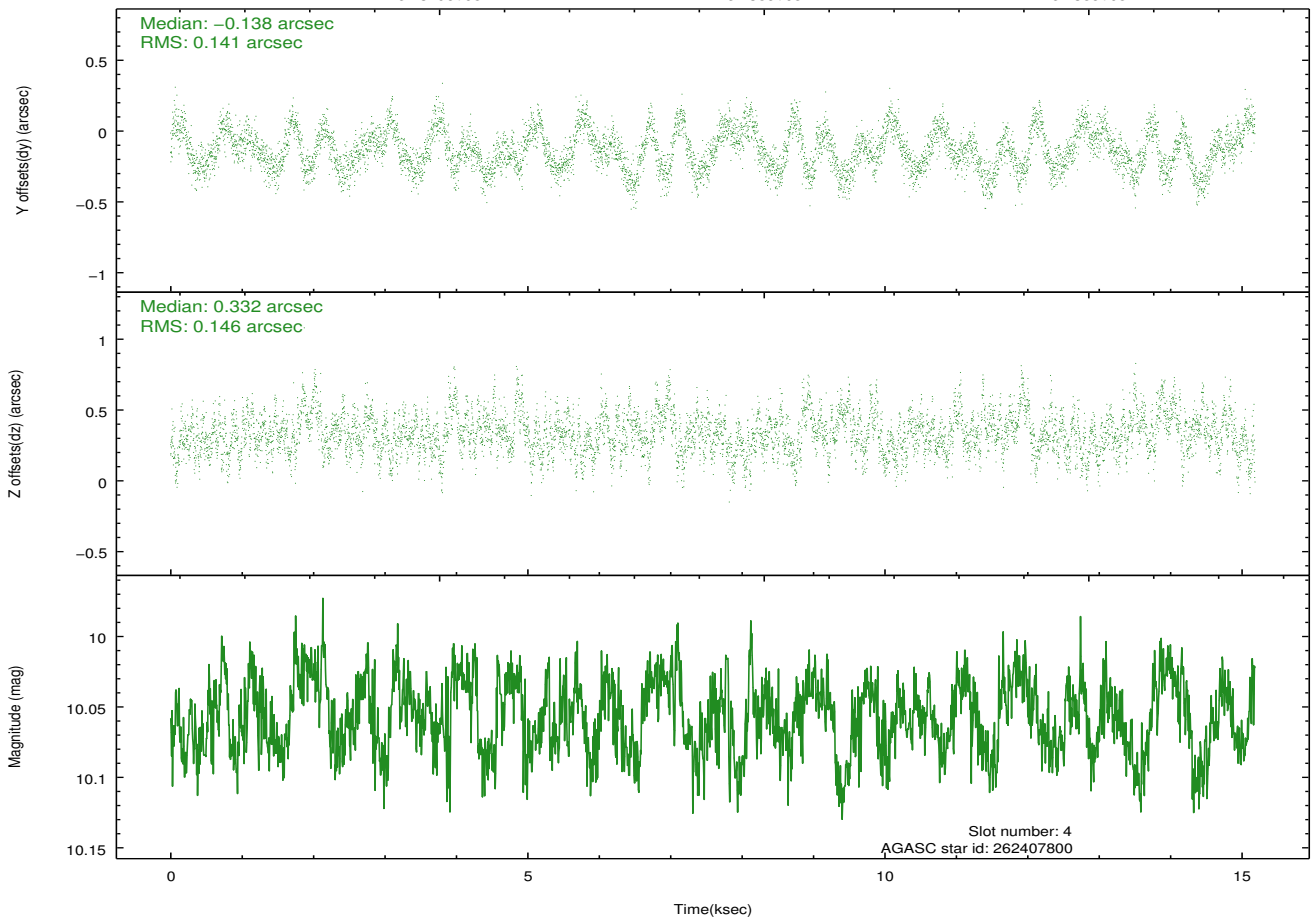


Time (s)

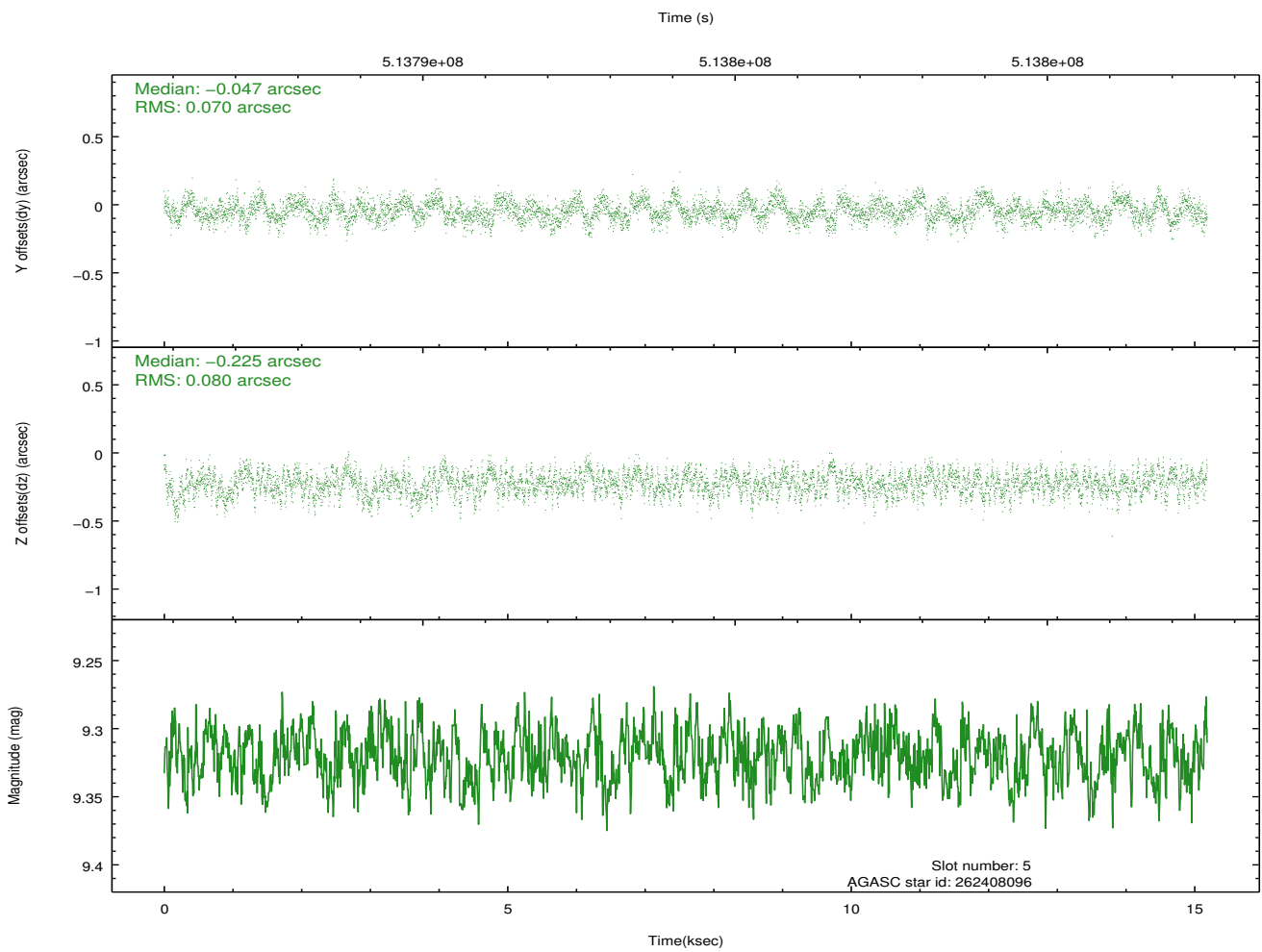
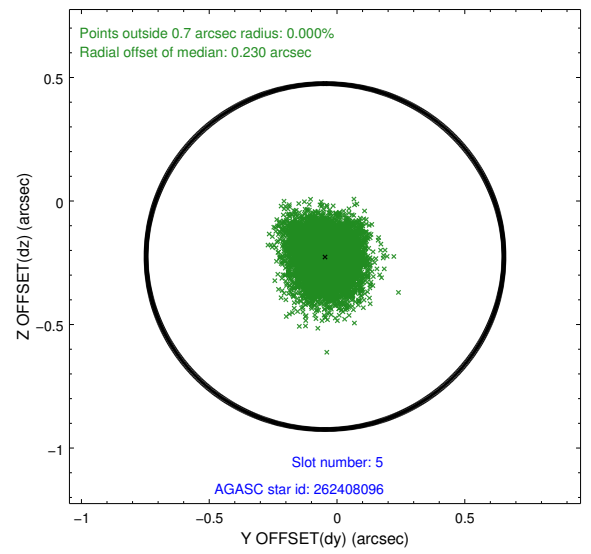
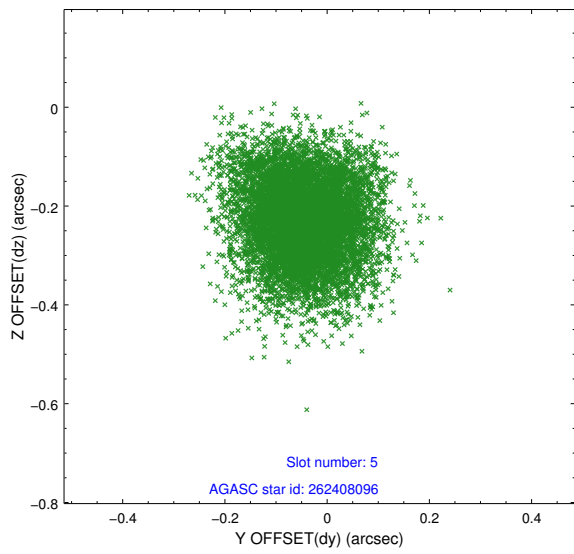
5.1379e+08

5.138e+08

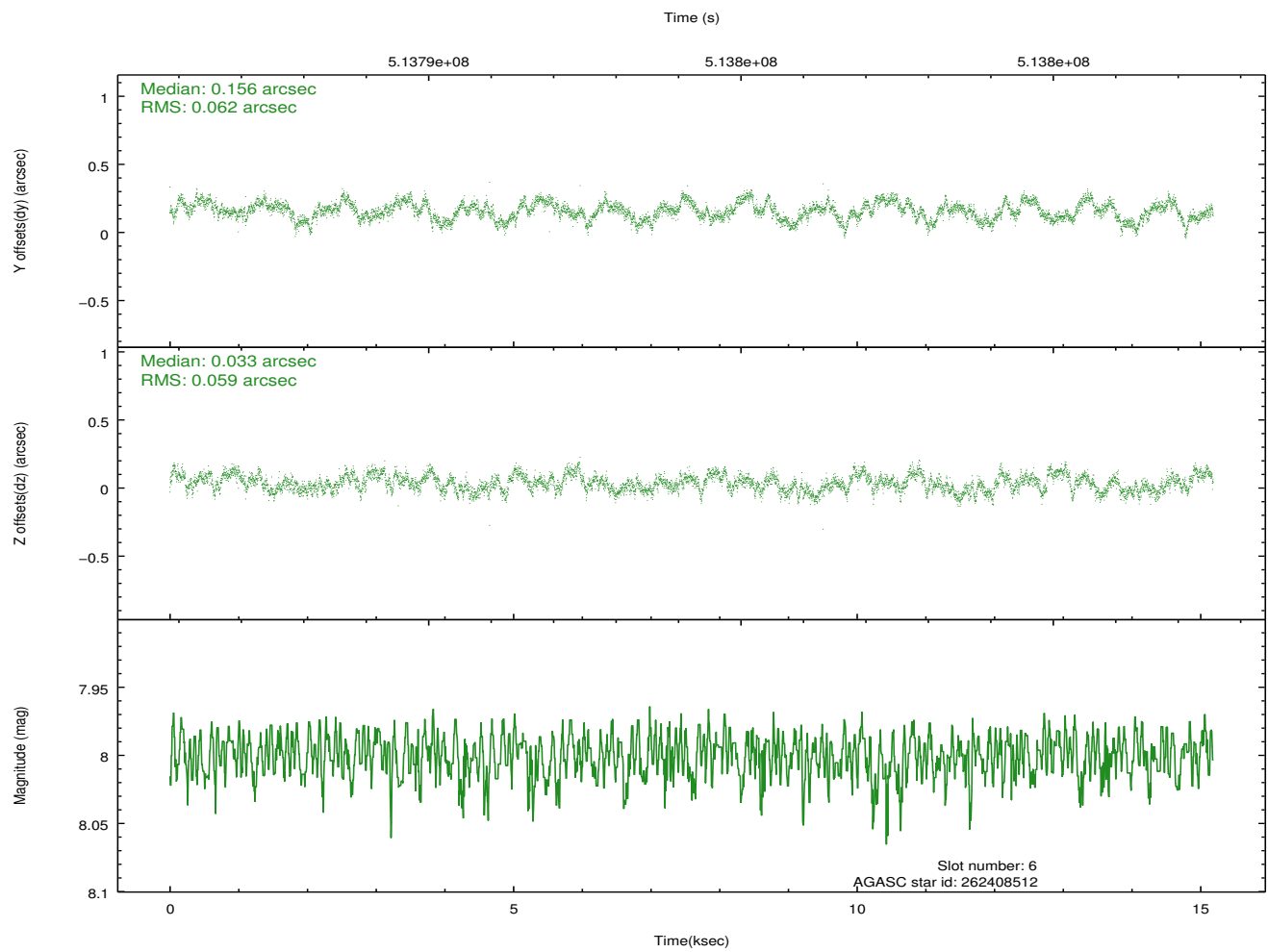
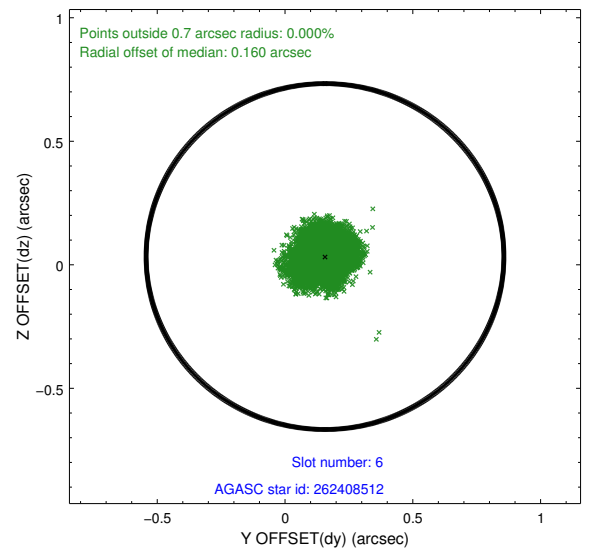
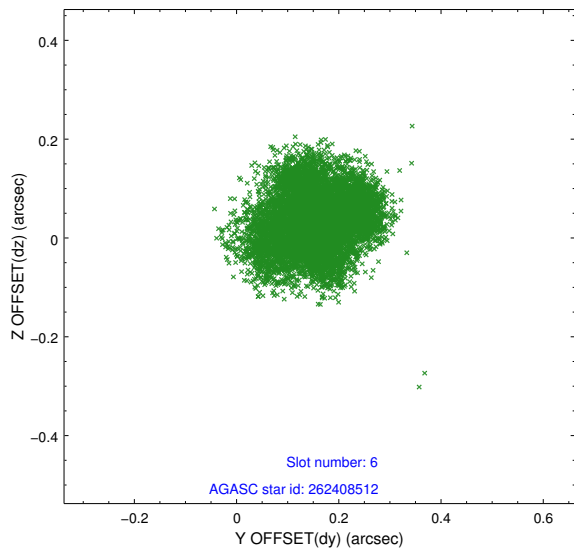
5.138e+08



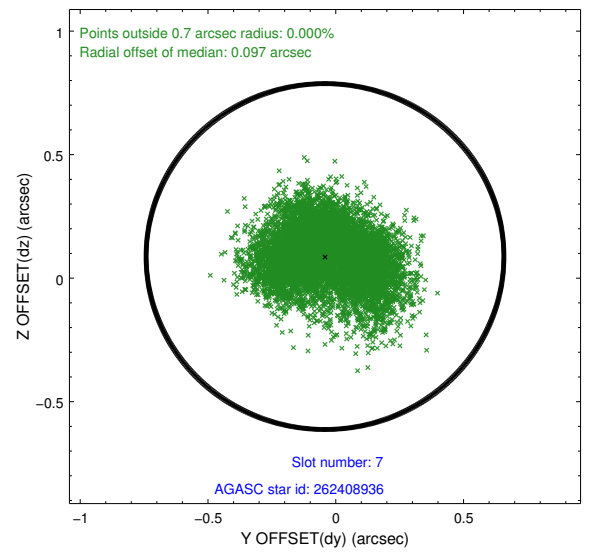
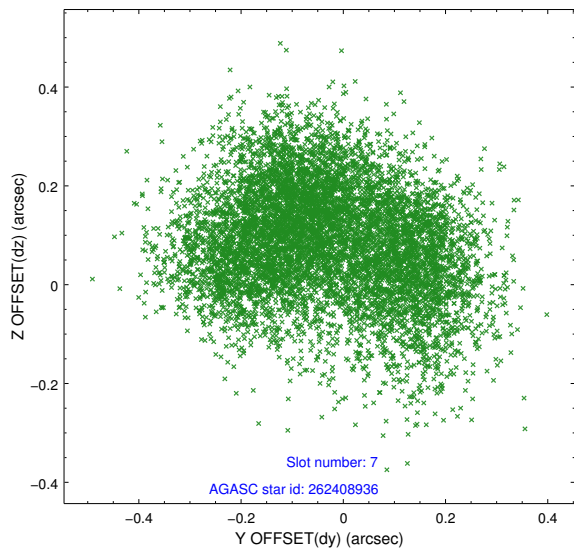
2.4.3 Slot 5



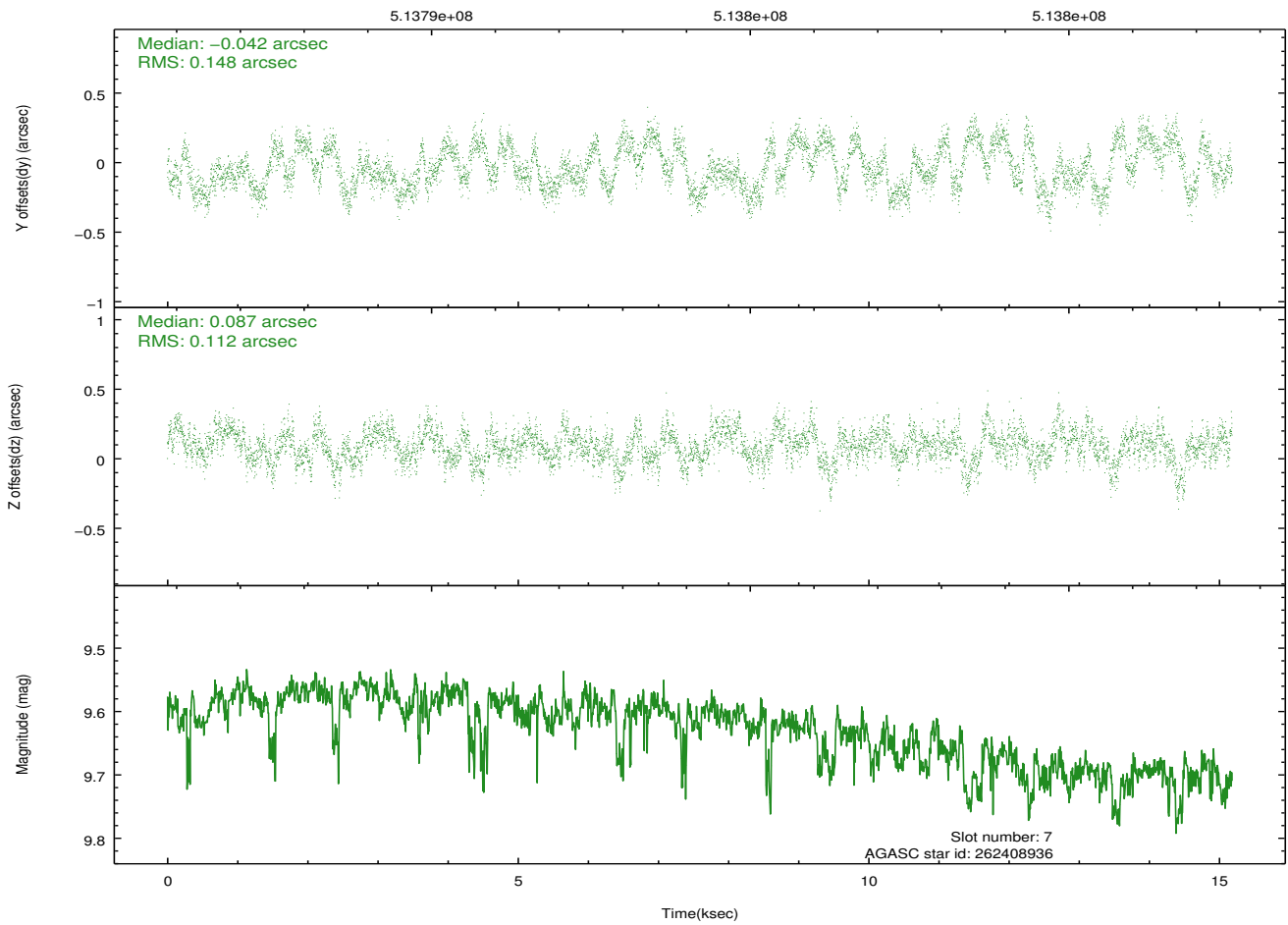
2.4.4 Slot 6



2.4.5 Slot 7

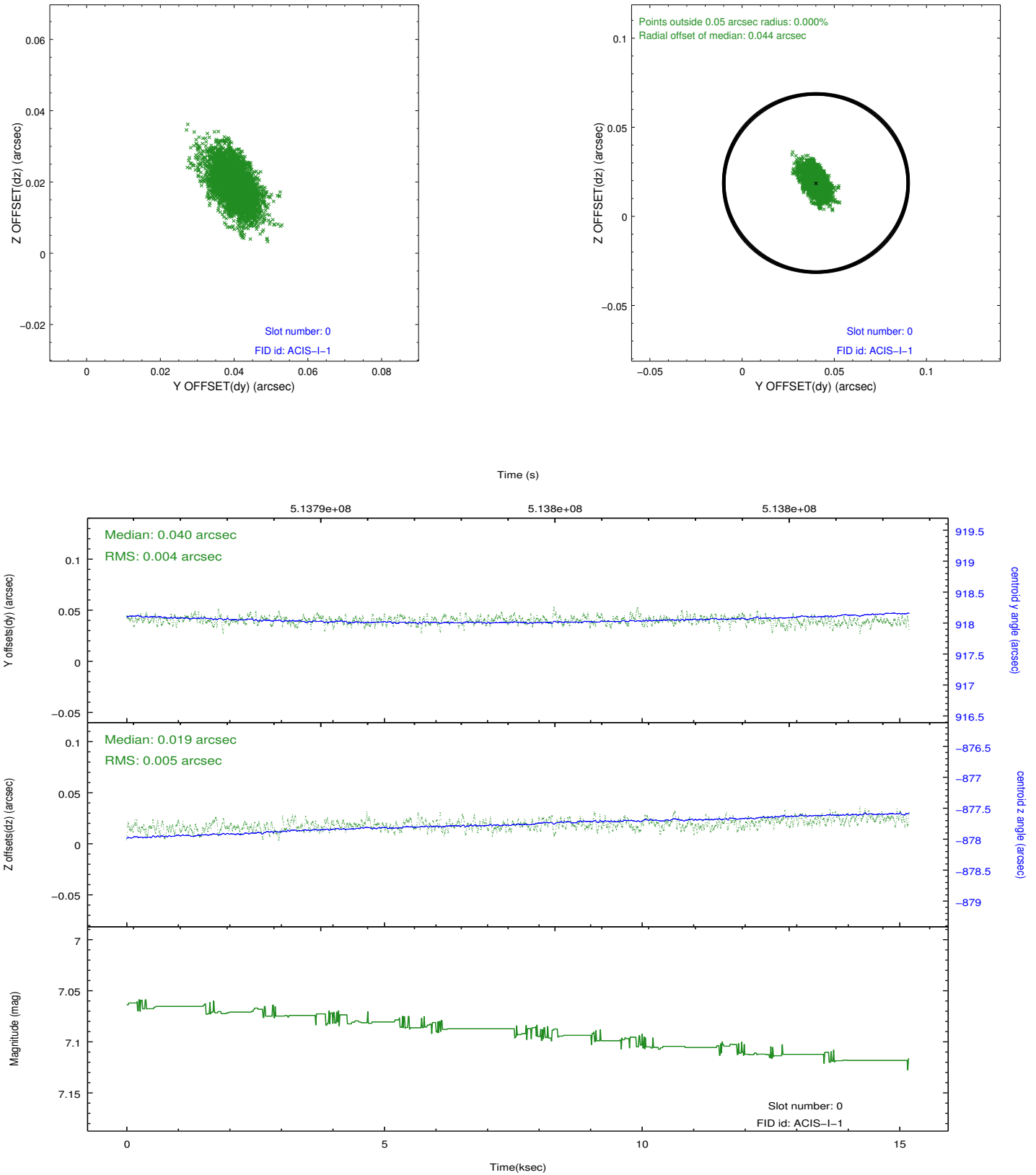


Time (s)

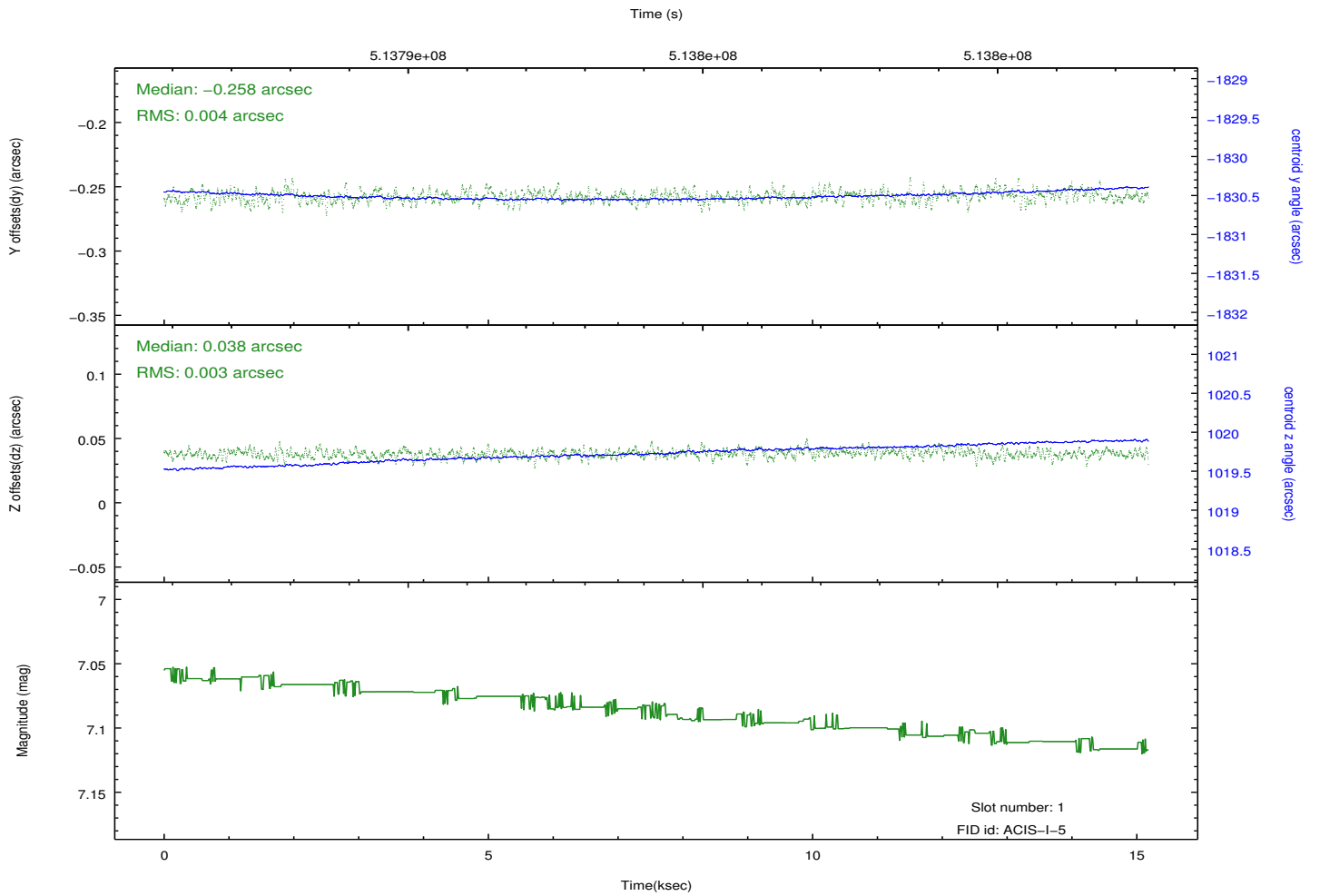
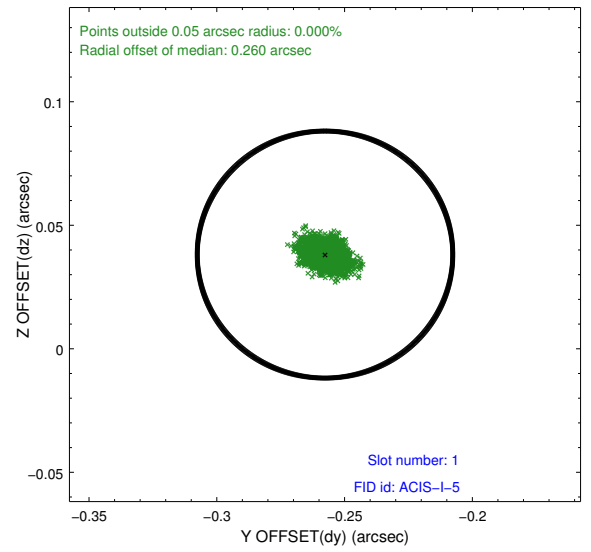
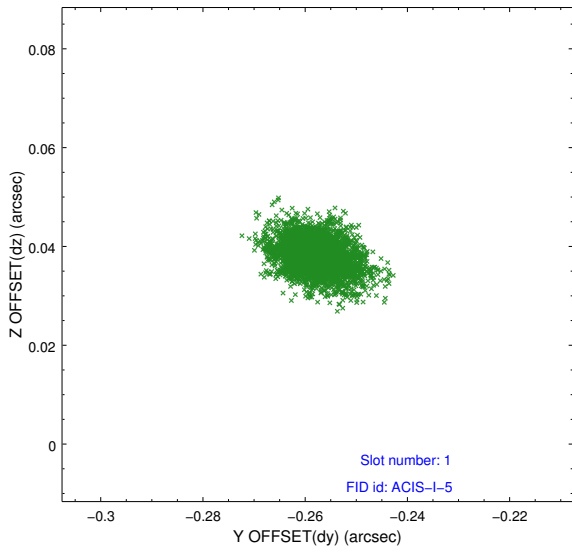


2.5 FID Slots

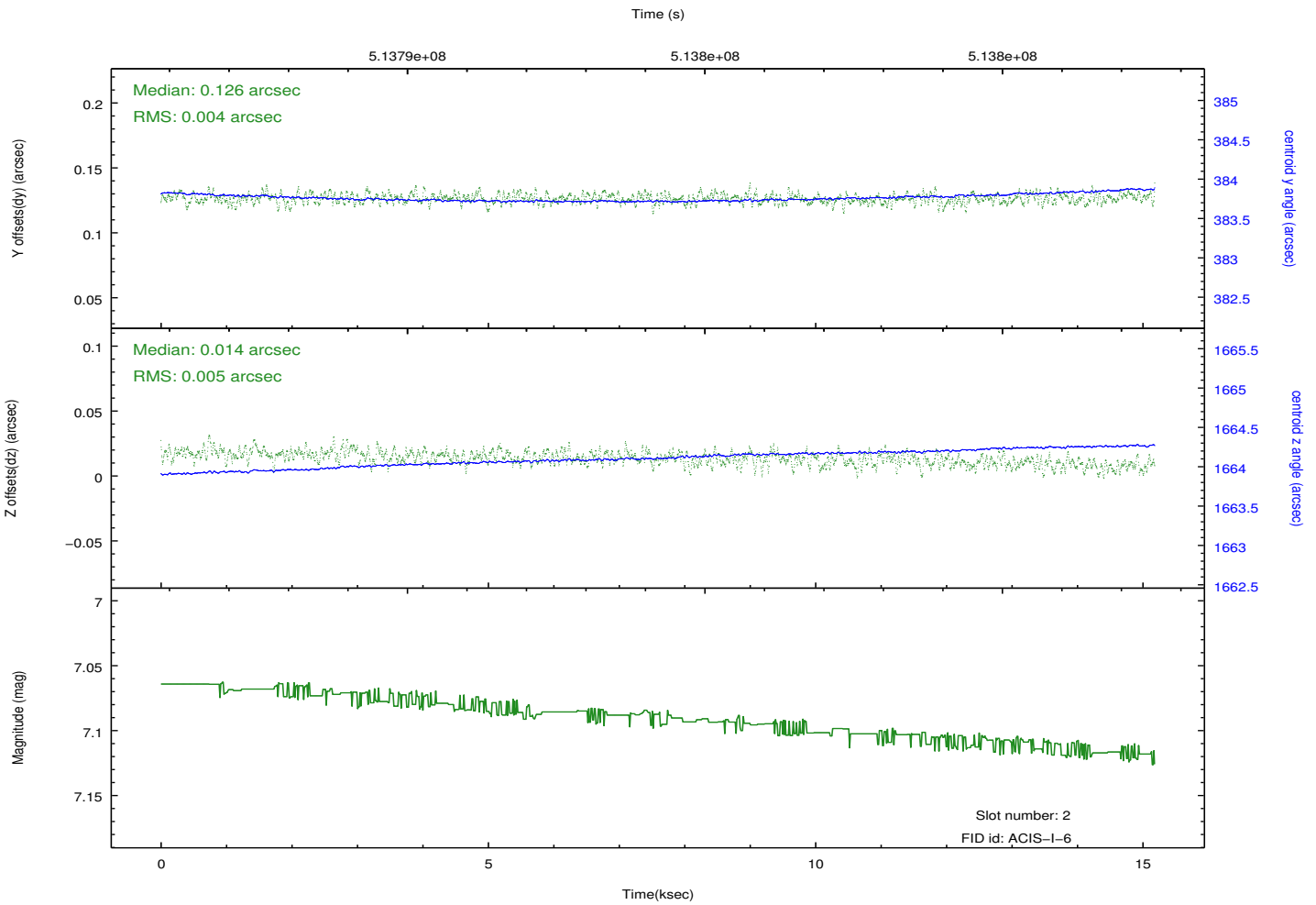
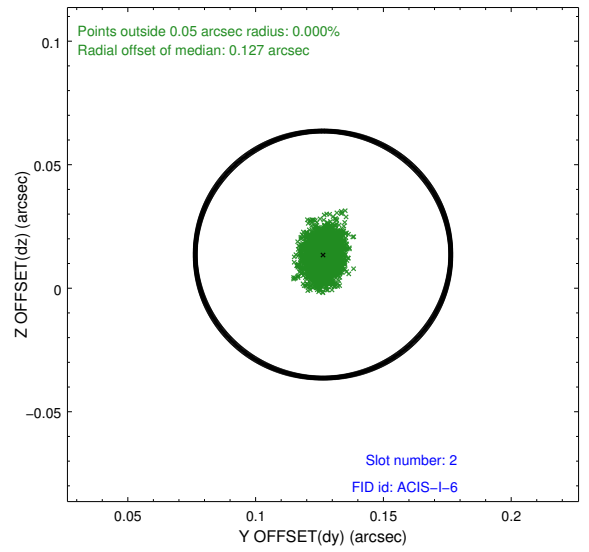
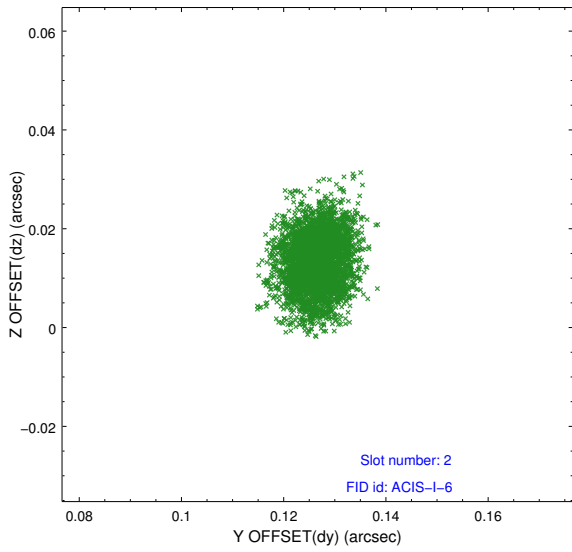
2.5.1 Slot 0



2.5.2 Slot 1



2.5.3 Slot 2



A Summary

A.1 Status

V&V Scientist	Jen Lauer
V&V Date (YYYY-MM-DD)	2014.12.18
V&V Edition	1
V&V Disposition and Status	OK
V&V Charge Time	14.771500113606

A.2 Comments

These data have been reprocessed with new aspect alignment calibration files that correct small mean offsets (up to 0.4 arcsecs) and improve overall astrometric accuracy. The new calibration was determined using data from the time period being reprocessed and was performed using cross-correlation of X-ray sources with radio and optical counterparts.