

V&V Reference Report

L2 ASCDS Version : 8.4.5

Observation 1647 - L2 Version 3
Chandra X-Ray Center

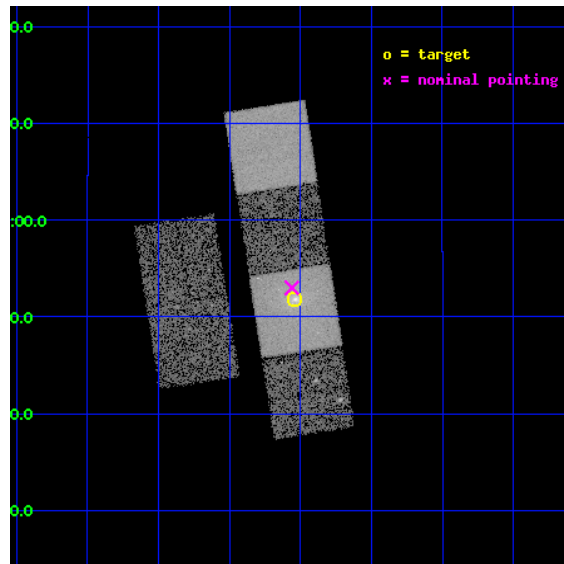
L2 Processing Date : Sep 5 2012

Contents

1	Front	2
2	OBI	3
2.1	OBI	3
2.1.1	Images	3
2.1.2	Bias	3
2.1.3	Parameters	4
2.1.4	Events	4
2.2	Compared Parameters	5
2.3	Aspect	6
2.4	Star Slots	9
2.4.1	Slot 3	9
2.4.2	Slot 4	10
2.4.3	Slot 5	11
2.4.4	Slot 6	12
2.4.5	Slot 7	13
2.5	FID Slots	14
2.5.1	Slot 0	14
2.5.2	Slot 1	15
2.5.3	Slot 2	16
A	Summary	17
A.1	Status	17
A.2	Comments	17

1 Front

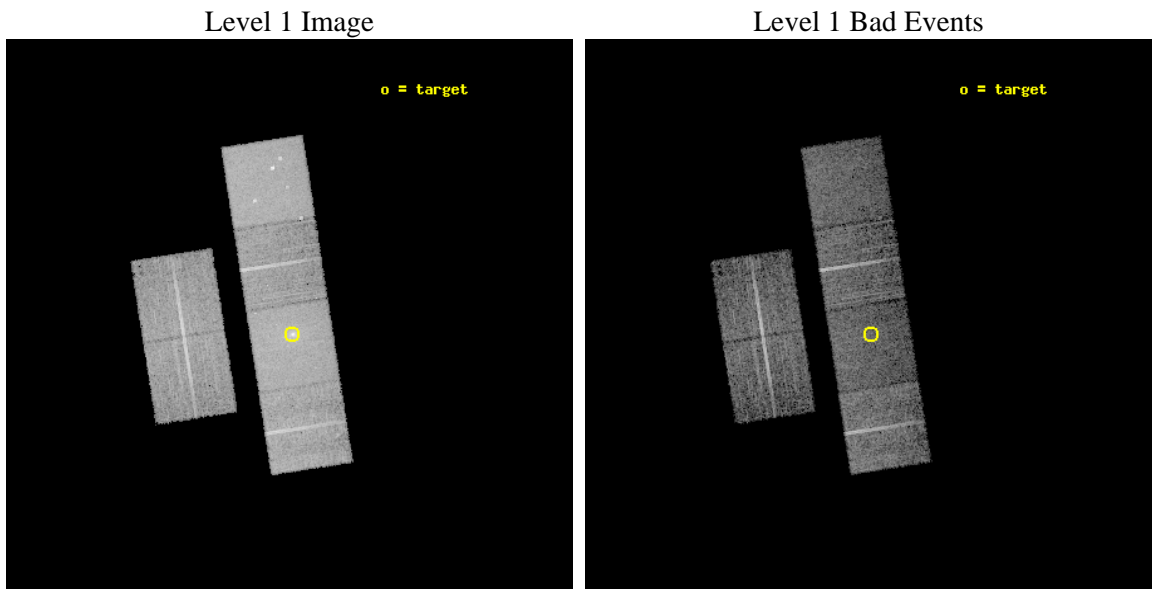
seq_num	800115	Sequence number
obs_id	1647	Observation id
title	THE COOLING FLOW IN RXJ0821.0+0752	Proposal title
observer	Professor Andrew Fabian	Principal investigator
object	RXJ0821	Source name
dtcycle	0	
cycle	P	events from which exps? Prim/Second/Both
ra_targ	125.26	Observer's specified target RA [deg]
dec_targ	7.863056	Observer's specified target Dec [deg]
ra_nom	125.2650438032	Nominal RA [deg]
dec_nom	7.8834142879048	Nominal Dec [deg]
roll_nom	81.135127146218	Nominal Roll [deg]
revision	3	Processing version of data
ontime	9539.2000088692	Sum of GTIs [s]
livetime	9418.4089145402	Livetime [s]
ontime2	9539.2000088692	Sum of GTIs [s]
ontime3	9539.2000088692	Sum of GTIs [s]
ontime5	9539.2000088692	Sum of GTIs [s]
ontime6	9539.2000088692	Sum of GTIs [s]
ontime7	9539.2000088692	Sum of GTIs [s]
ontime8	9532.7181681693	Sum of GTIs [s]
l2events	114609	Number of level 2 events



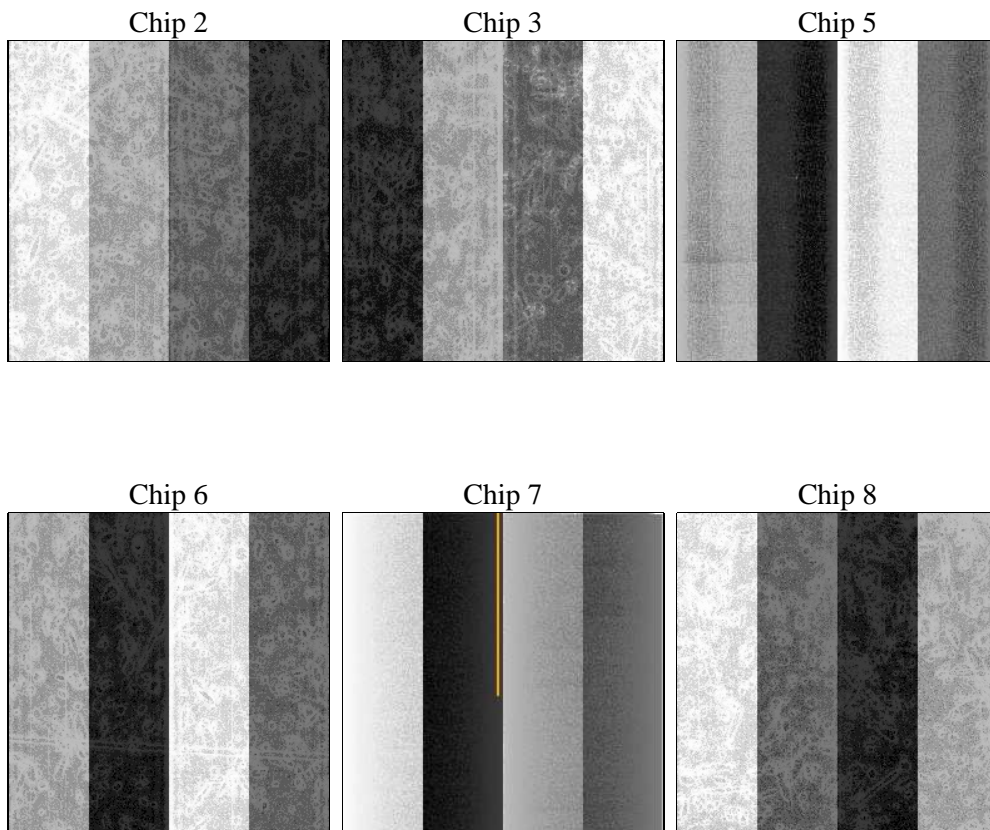
2 OBI

2.1 OBI

2.1.1 Images



2.1.2 Bias



2.1.3 Parameters

obi_num	0	Obi number	sched_exp_time	9785.000000	[s] Scheduled observation exposure time
ascdsver	8.4.5	Processing system revision	ontime	9539.2000088692	Sum of GTIs [s]
caldbver	4.5.1.1	 	ontime2	9539.2000088692	Sum of GTIs [s]
date	2012-09-05T15:07:36	Date and time of file creation	ontime3	9539.2000088692	Sum of GTIs [s]
revision	3	Processing version of data	ontime5	9539.2000088692	Sum of GTIs [s]
			ontime6	9539.2000088692	Sum of GTIs [s]
			ontime7	9539.2000088692	Sum of GTIs [s]
			ontime8	9532.7181681693	Sum of GTIs [s]
			l1events	426184	Number of level 1 events

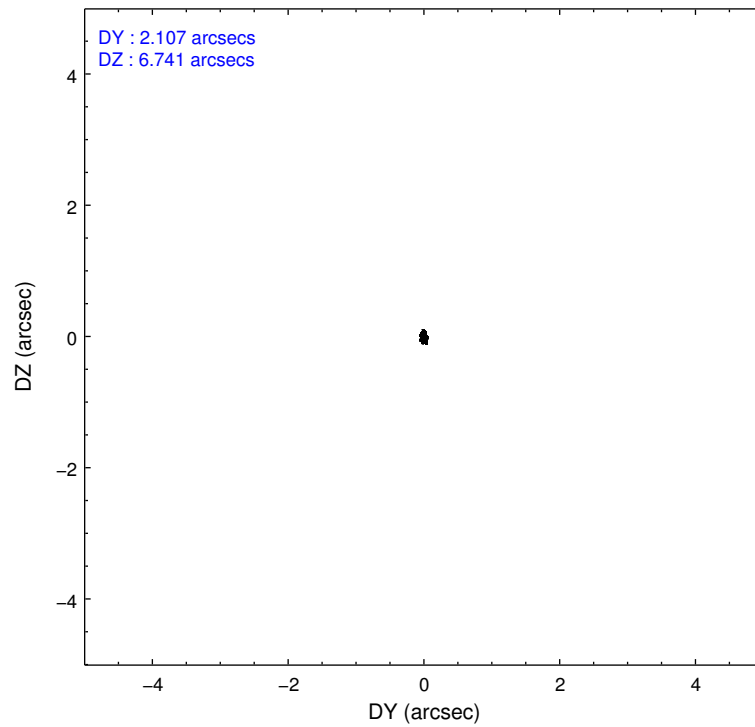
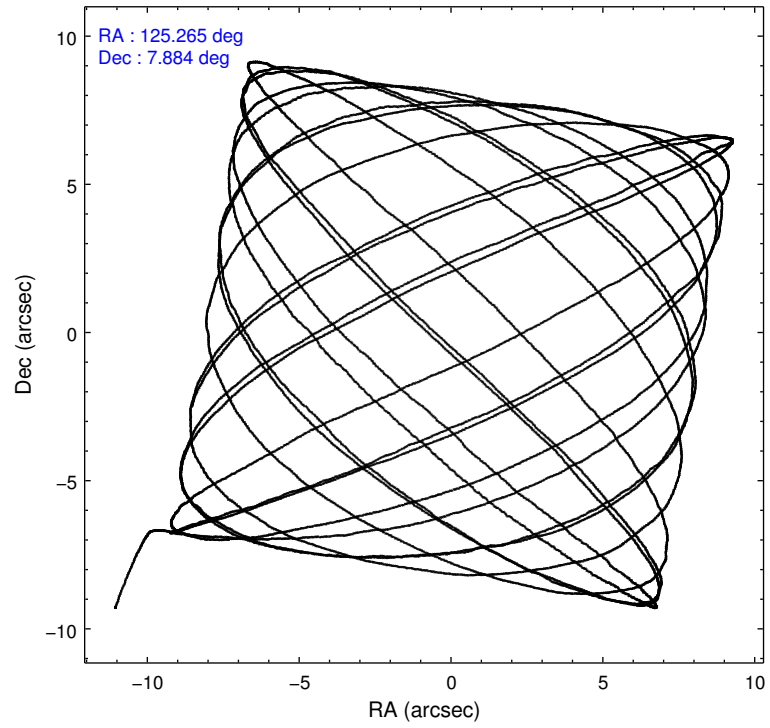
2.1.4 Events

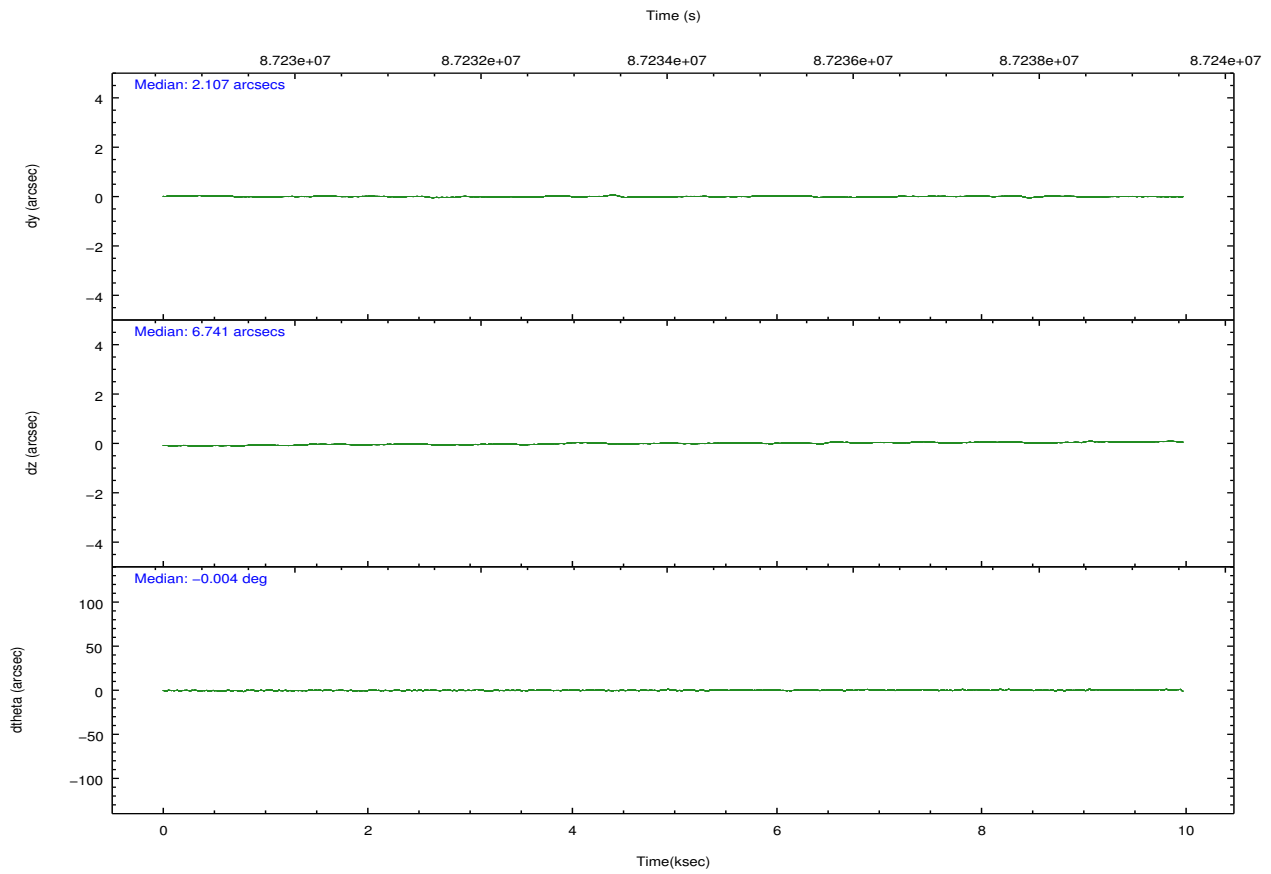
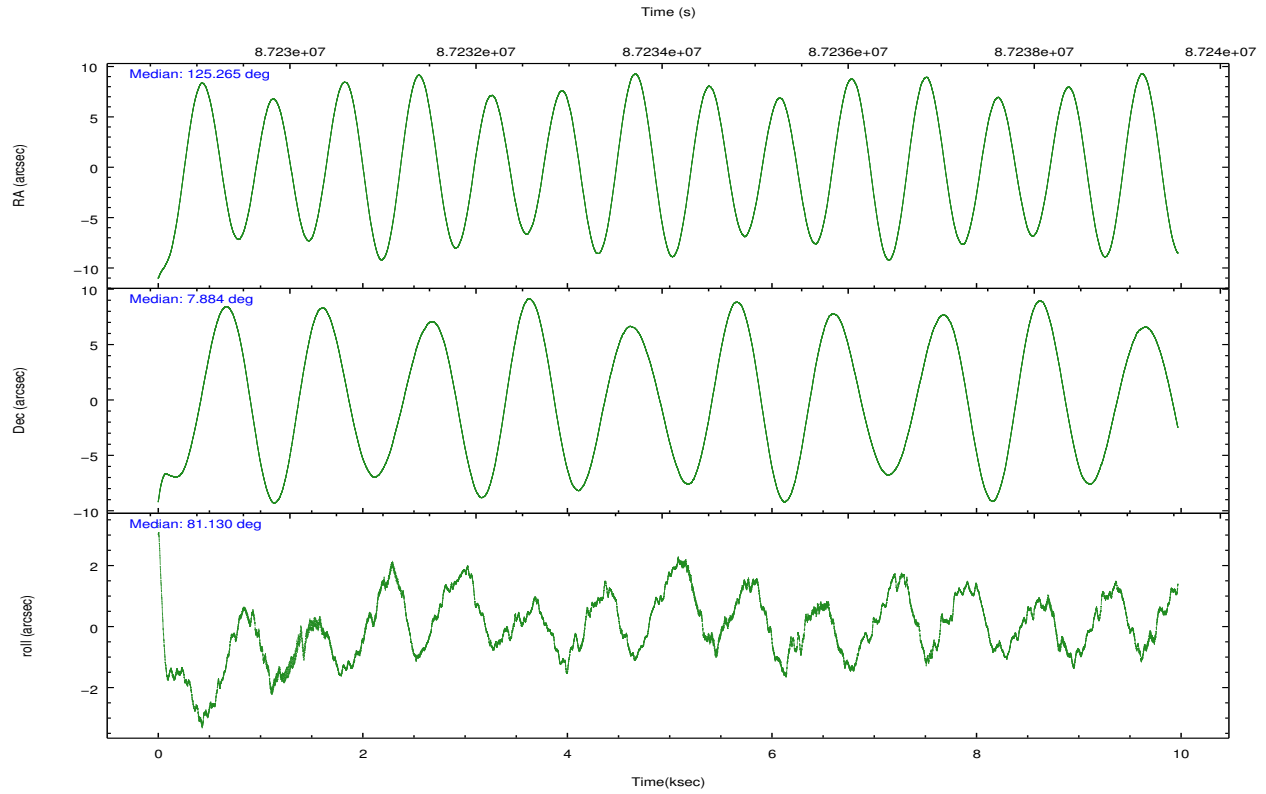
	ccd 2	ccd 3	ccd 5	ccd 6	ccd 7	ccd 8		ccd 2	ccd 3	ccd 5	ccd 6	ccd 7	ccd 8
level 1 events	57912	56143	90057	58238	89725	74109	grade 0 events	2780	2882	7843	2967	7512	4683
rejected events	51530	49737	42505	51554	41331	60151		4%	5%	8%	5%	8%	6%
rejected %	88%	88%	47%	88%	46%	81%	grade 1 events	25	28	180	24	73	51
								0%	0%	0%	0%	0%	0%
							grade 2 events	1325	1205	13031	1281	9972	2894
								2%	2%	14%	2%	11%	3%
							grade 3 events	629	593	2339	620	4477	1550
								1%	1%	2%	1%	4%	2%
							grade 4 events	579	633	2289	618	4561	1495
								0%	1%	2%	1%	5%	2%
							grade 5 events	1853	2123	6062	2237	6841	3054
								3%	3%	6%	3%	7%	4%
							grade 6 events	1069	1097	22056	1198	21887	3337
								1%	1%	24%	2%	24%	4%
							grade 7 events	49652	47582	36257	49293	34402	57045
								85%	84%	40%	84%	38%	76%

2.2 Compared Parameters

Parameter	Planned	Actual	Parameter	Planned	Actual
Instrument	ACIS	ACIS	Obspar format version number	7	7
Detector	ACIS-235678	ACIS-235678	Obspar file type	PREDICTED	ACTUAL
Grating	NONE	NONE	Obspar update status	NONE	UPDATED
Data mode	FAINT	FAINT	Number of optional ACIS chips dropped	0	0
Observation mode	POINTING	POINTING	On-chip summing requested	N	N
[deg] Pointing RA	125.275199	125.2650438032028	Subarray requested	NONE	NONE
[deg] Pointing Dec	7.857971	7.883414287904765	Alternating exposures requested	N	N
[deg] Pointing Roll	80.977113	81.13512714621751	[s] Primary exposure time	0.000000	3.2
[mm] SIM focus pos	-0.684267	-0.6828225247311905			
[mm] SIM defocus	0	0.001444936568705701			
[mm] SIM translation stage pos	-190.132523	-190.1400660498719			
[mm] SIM translation stage offset	0	0.00754346686406393			
[s] Observation start time (MET)	87229264.184000	87228550.029799			
Observation start date	2000-10-06T14:20:00	2000-10-06T14:09:10			
[s] Observation end time (MET)	87239049.184000	87239906.517728			
Observation end date	2000-10-06T17:03:05	2000-10-06T17:18:26			
Read mode	TIMED	TIMED			

2.3 Aspect



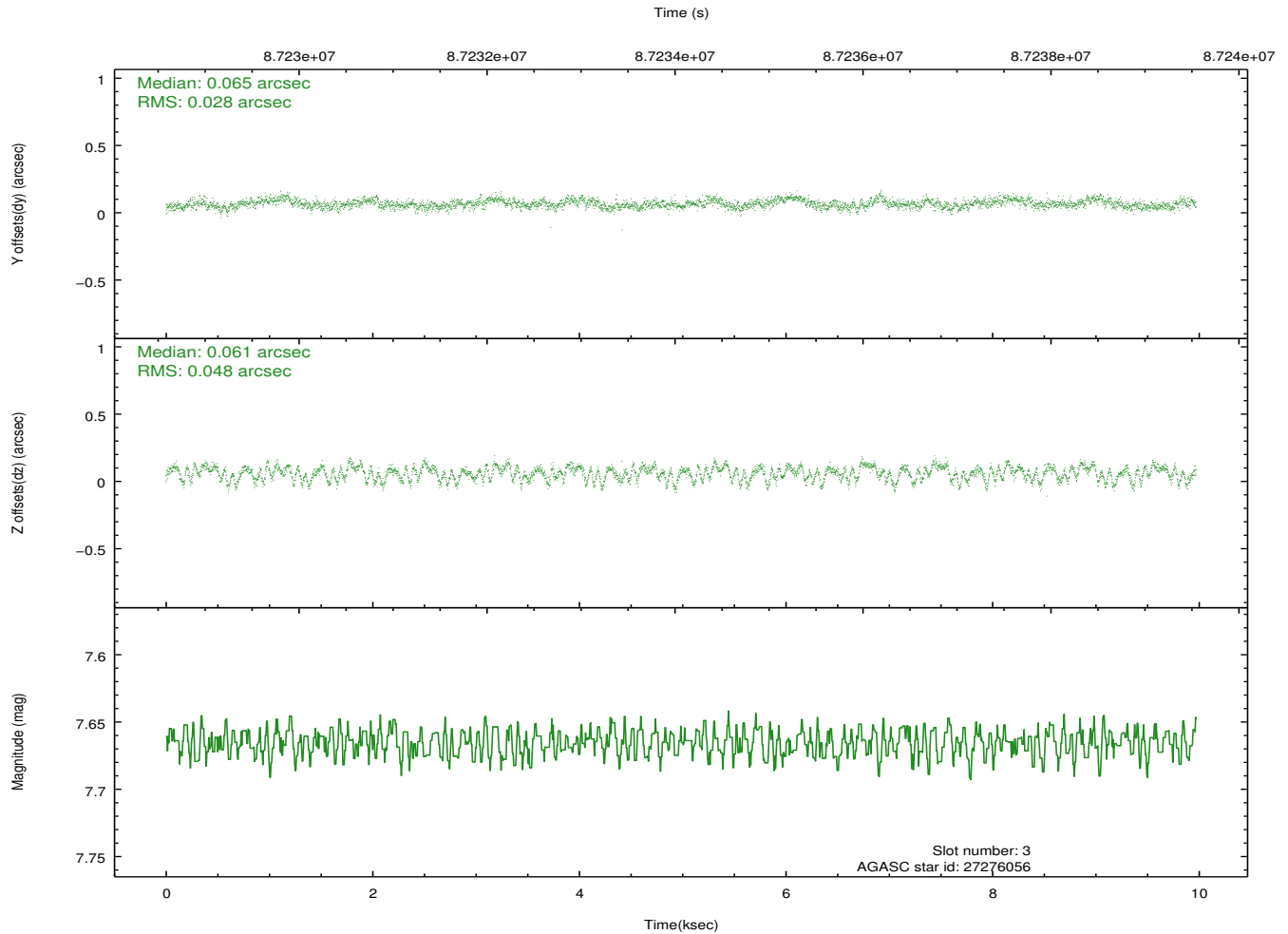
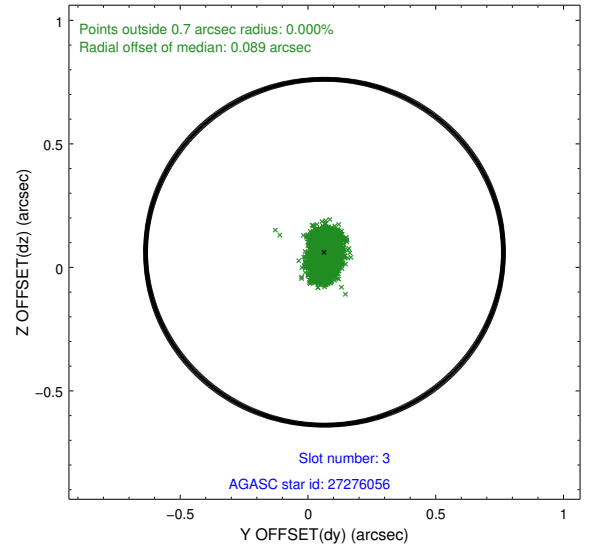
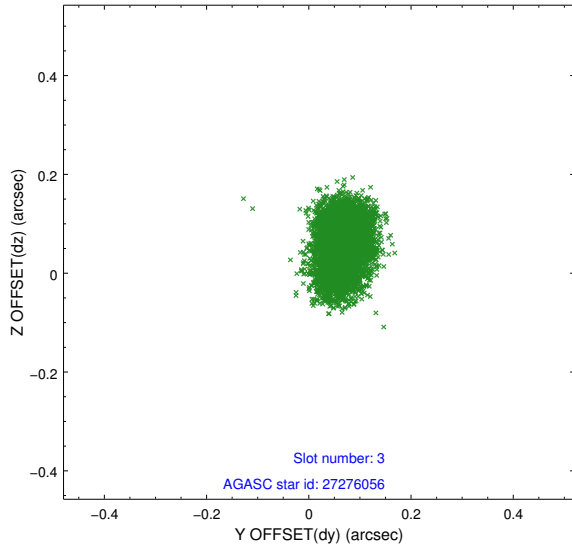


Slot Statistics

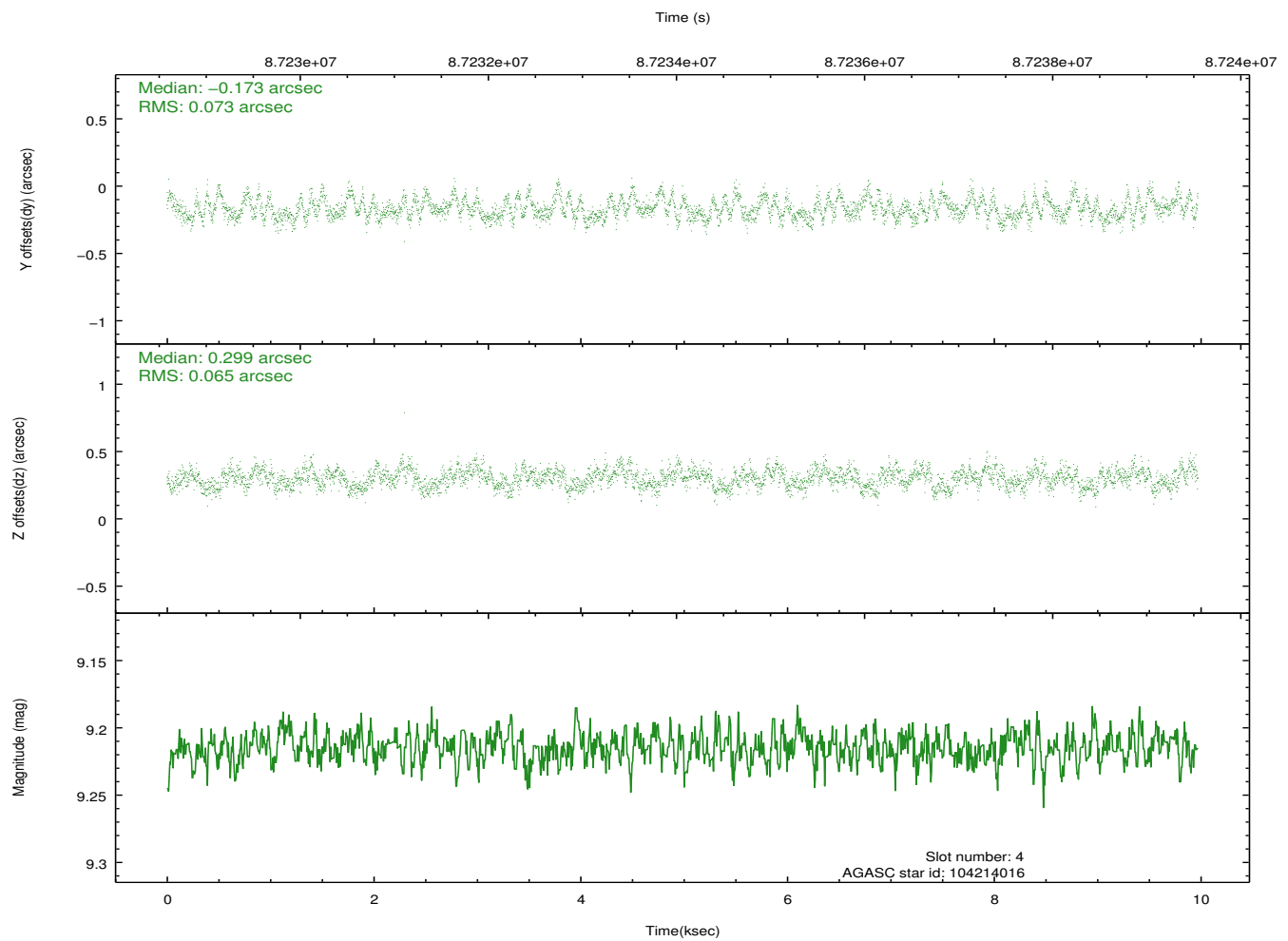
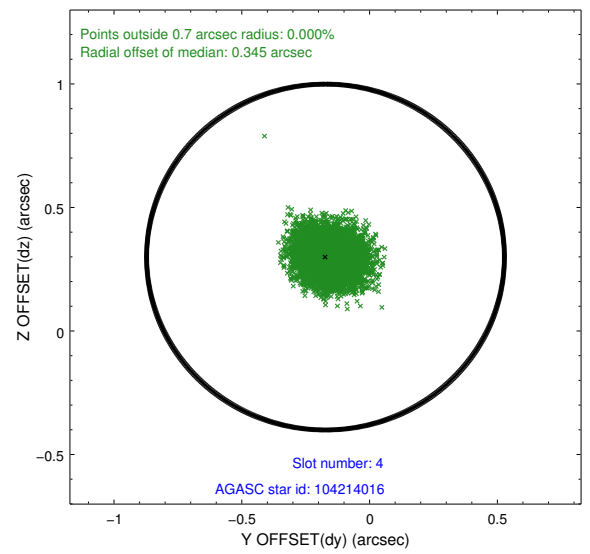
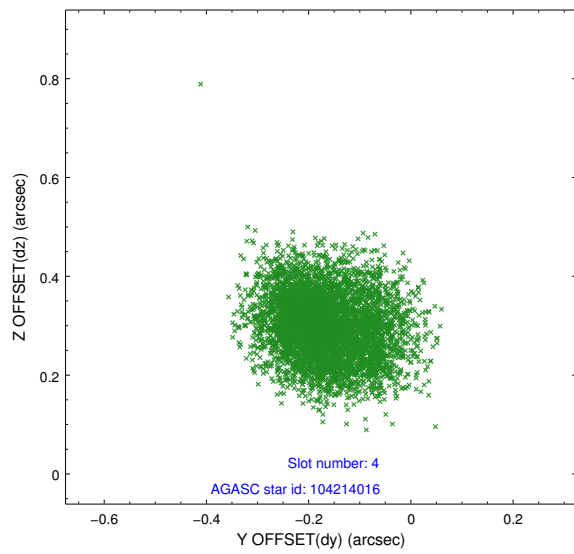
slot	status	id	mag	n_pts	med_dy	med_dz	dr1	dr2	ra	dec	mean_y	mean_z
0	FID	ACIS-S-2	7.11	2431	-0.030	-0.003	0.006	0.011	0.000000	0.000000	-754.76	-1727.90
1	FID	ACIS-S-4	7.20	2431	-0.023	0.015	0.005	0.010	0.000000	0.000000	2158.29	180.05
2	FID	ACIS-S-5	7.23	2432	0.022	-0.004	0.006	0.011	0.000000	0.000000	-1806.86	174.32
3	GUIDE	27276056	7.67	4864	0.065	0.061	0.060	0.097	125.347486	7.386536	-1635.92	-520.59
4	GUIDE	104214016	9.21	4865	-0.173	0.299	0.105	0.165	125.978575	8.019253	968.16	-2384.16
5	GUIDE	104217296	8.88	4865	0.111	-0.022	0.074	0.116	125.514563	7.643066	-629.88	-964.82
6	GUIDE	27265384	9.58	4864	0.251	-0.261	0.122	0.188	124.635258	7.417855	-1921.87	2008.03
7	GUIDE	104202616	9.56	4864	-0.264	-0.076	0.102	0.163	125.143469	8.504755	2225.05	829.52

2.4 Star Slots

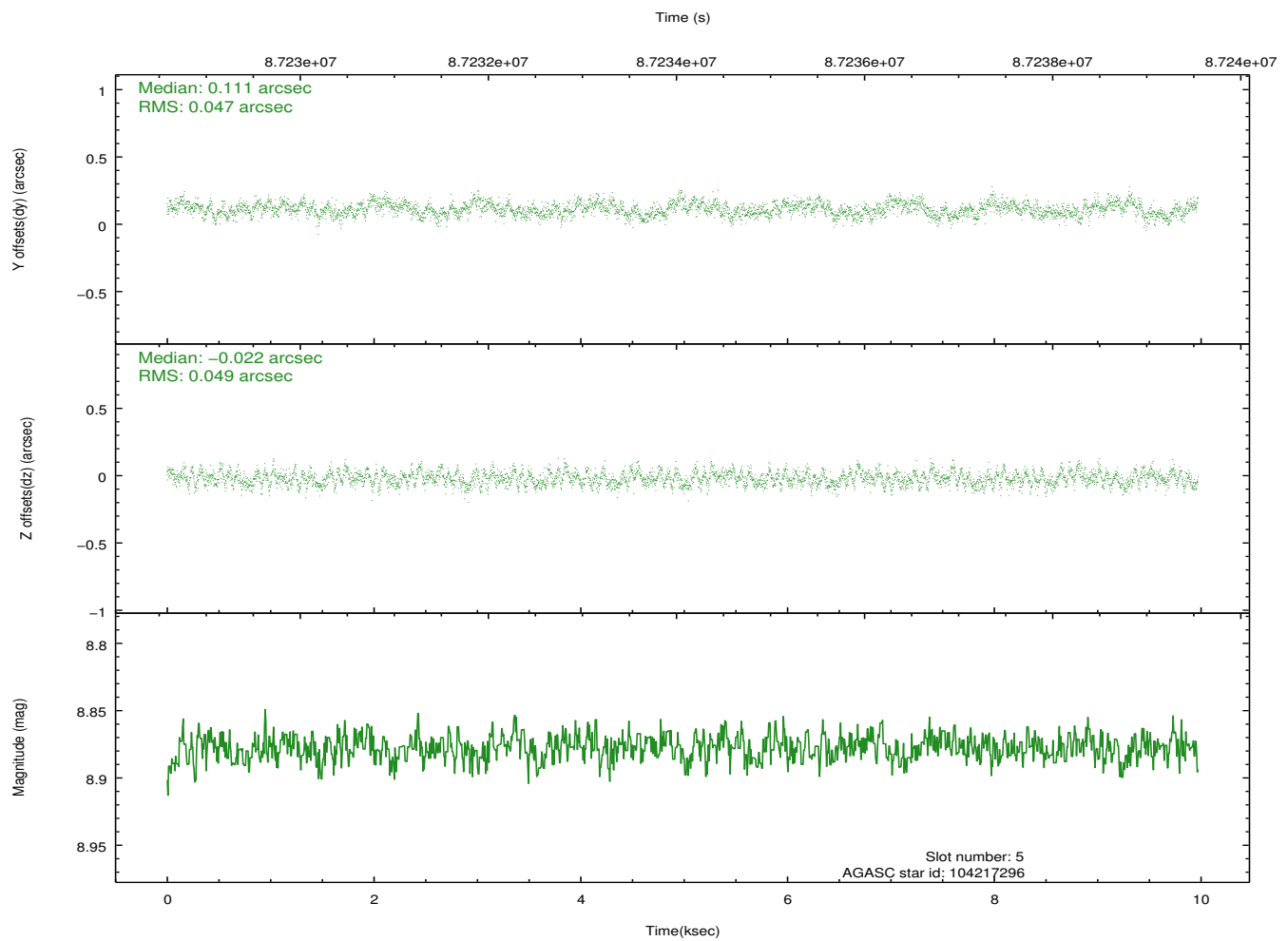
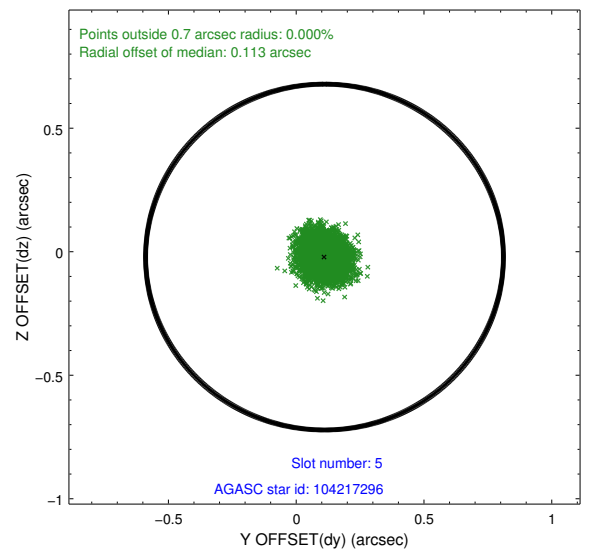
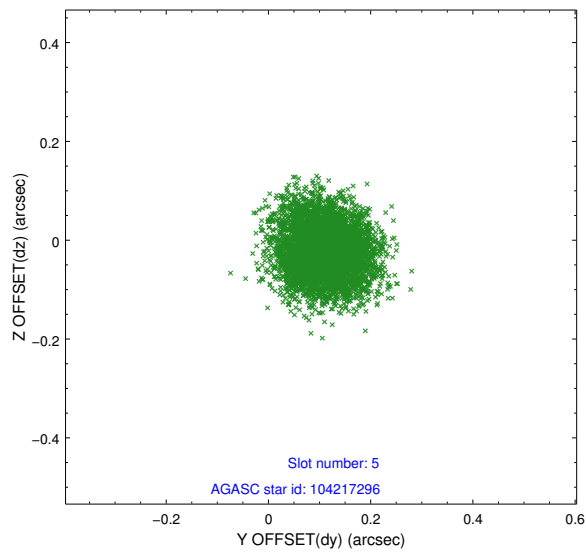
2.4.1 Slot 3



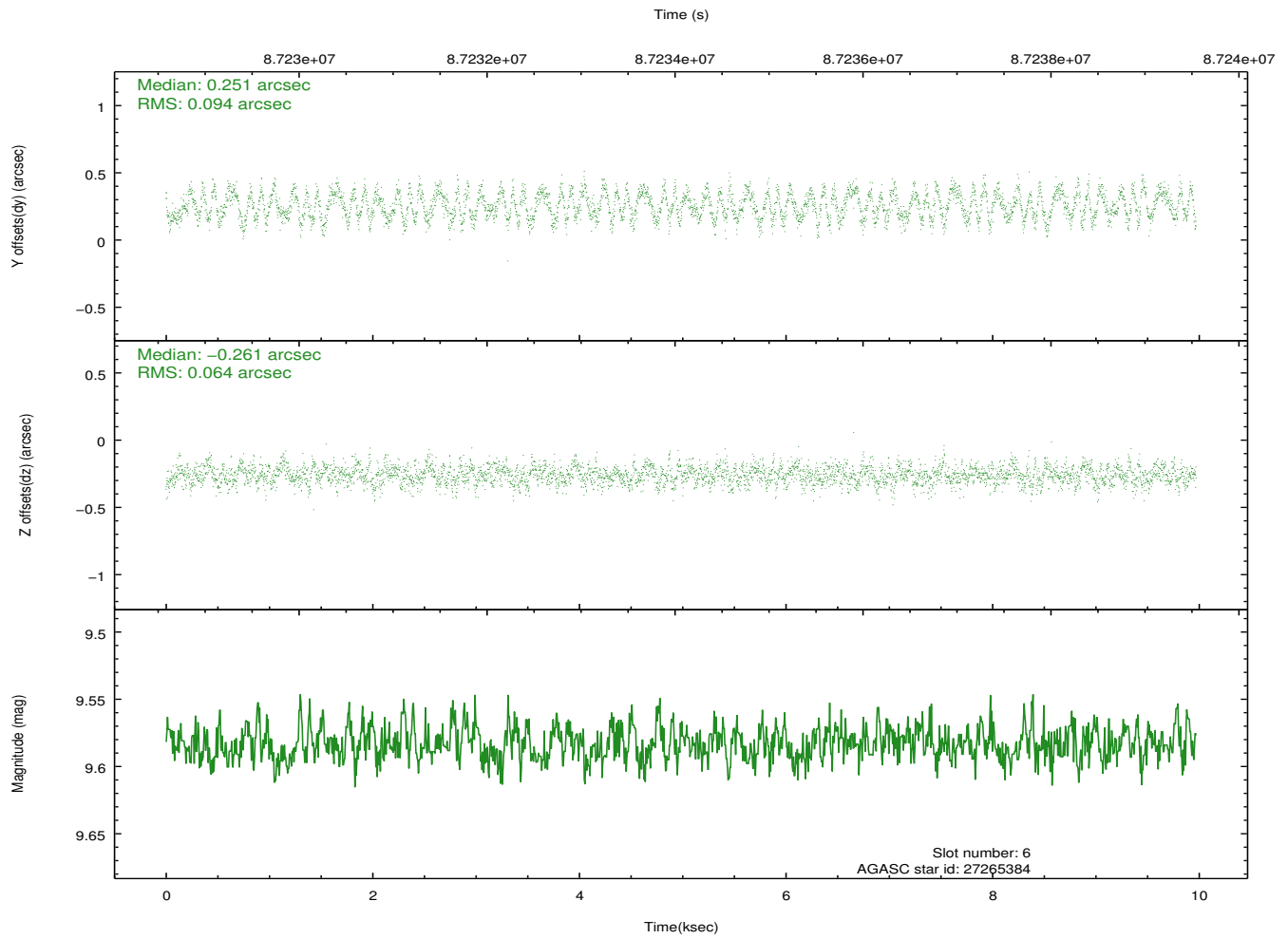
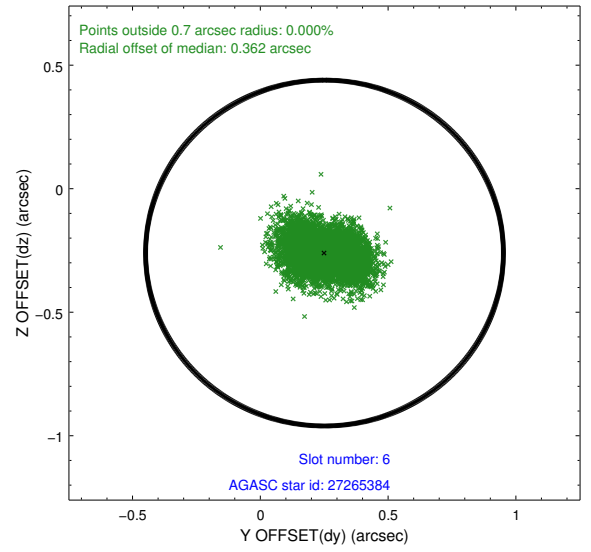
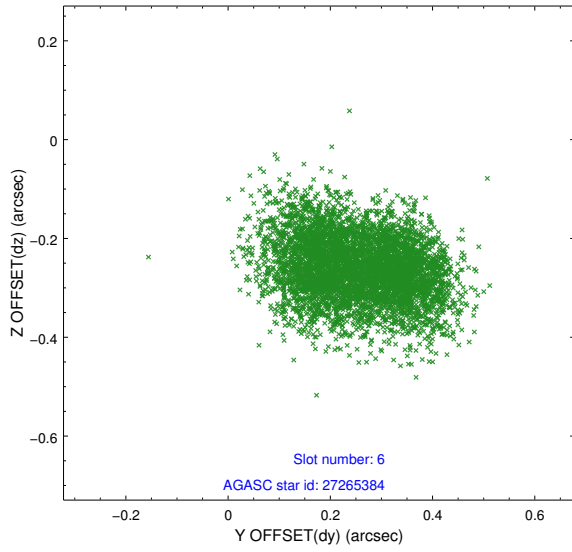
2.4.2 Slot 4



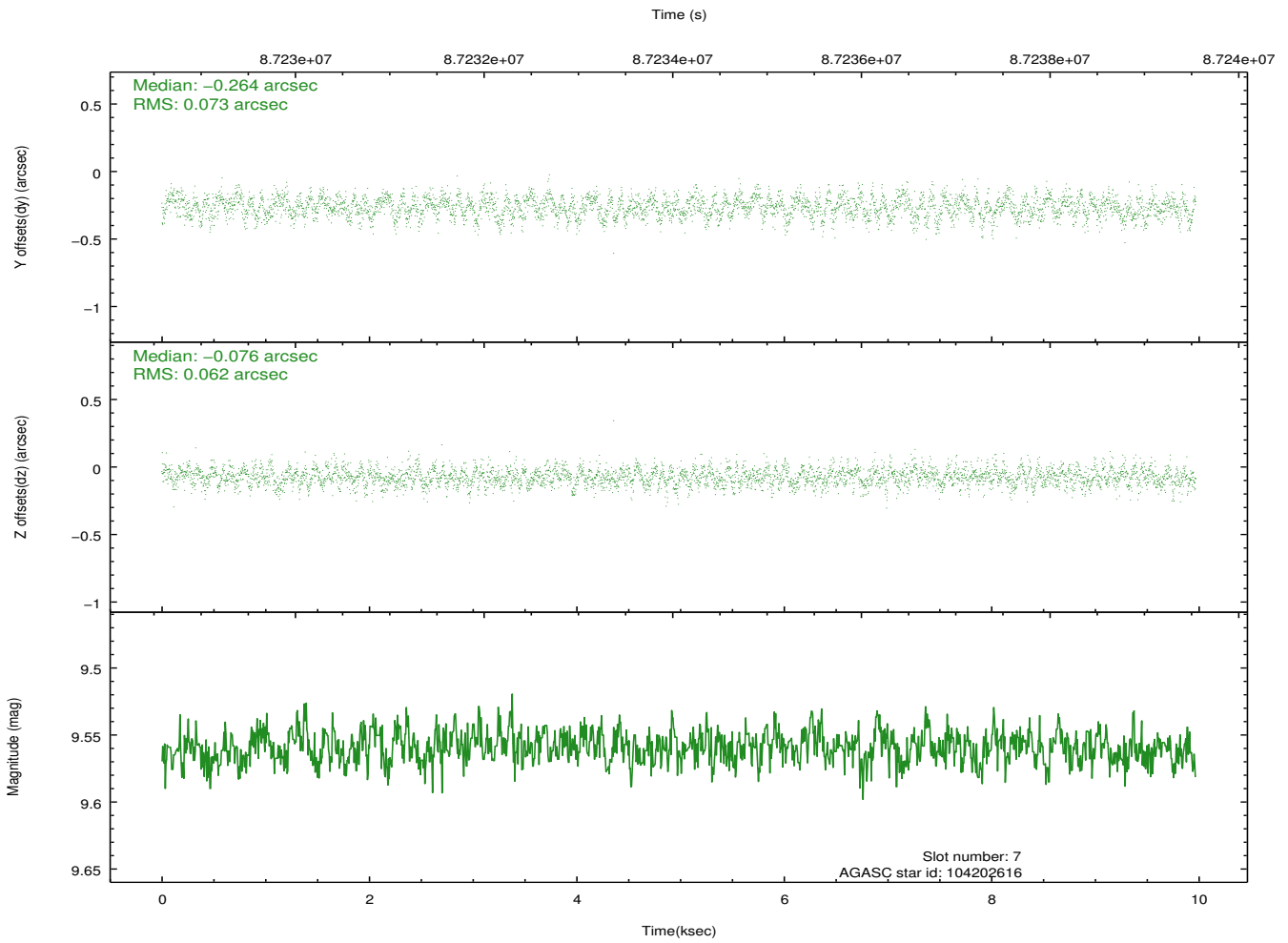
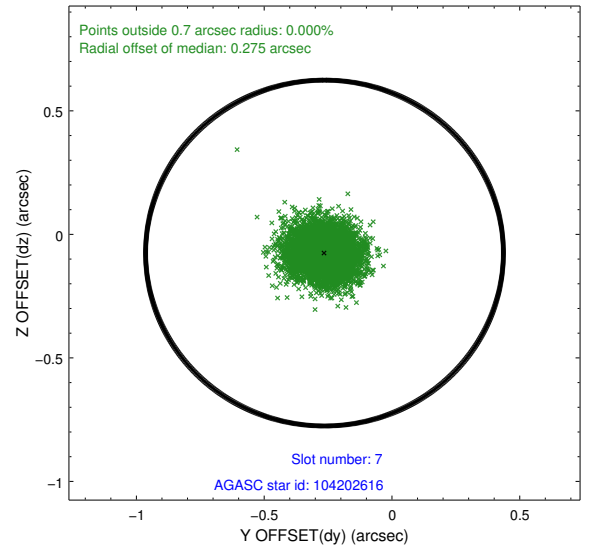
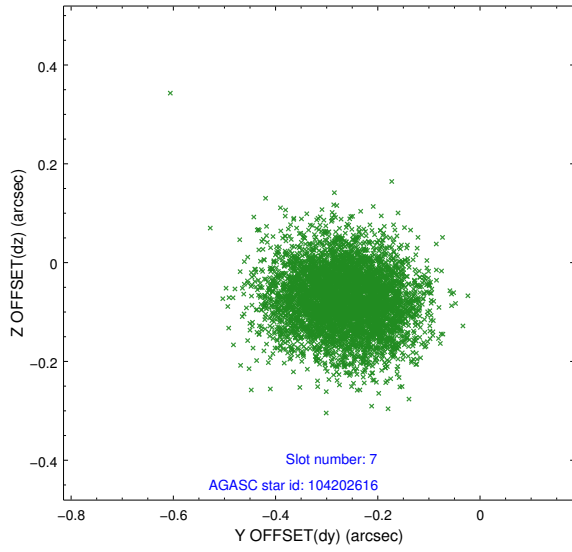
2.4.3 Slot 5



2.4.4 Slot 6

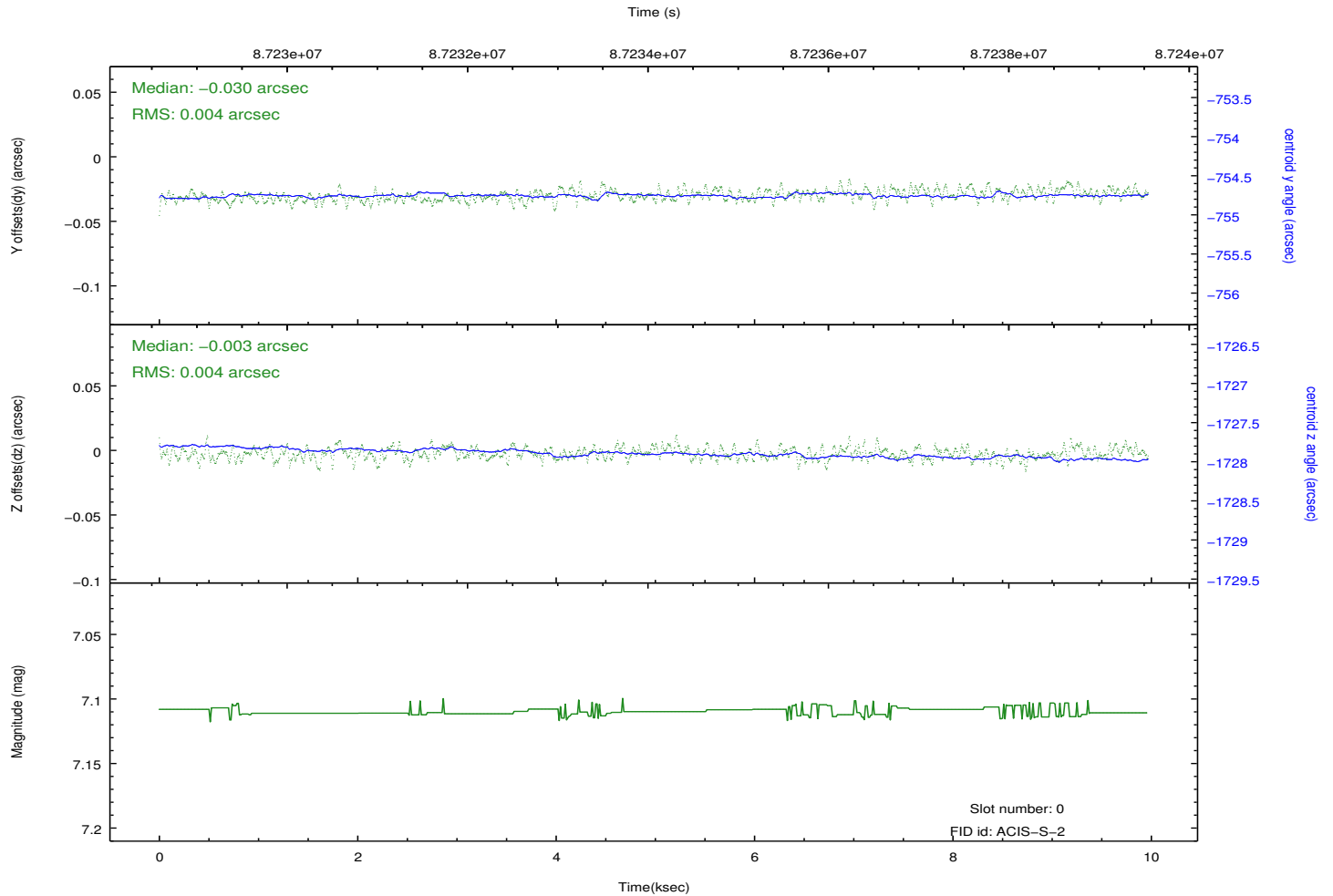
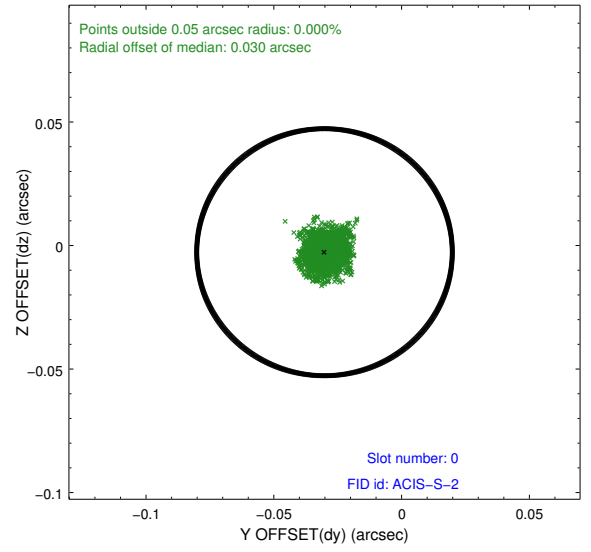
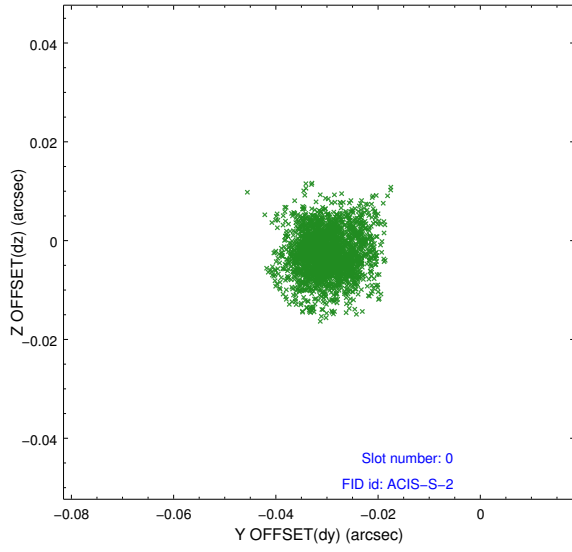


2.4.5 Slot 7

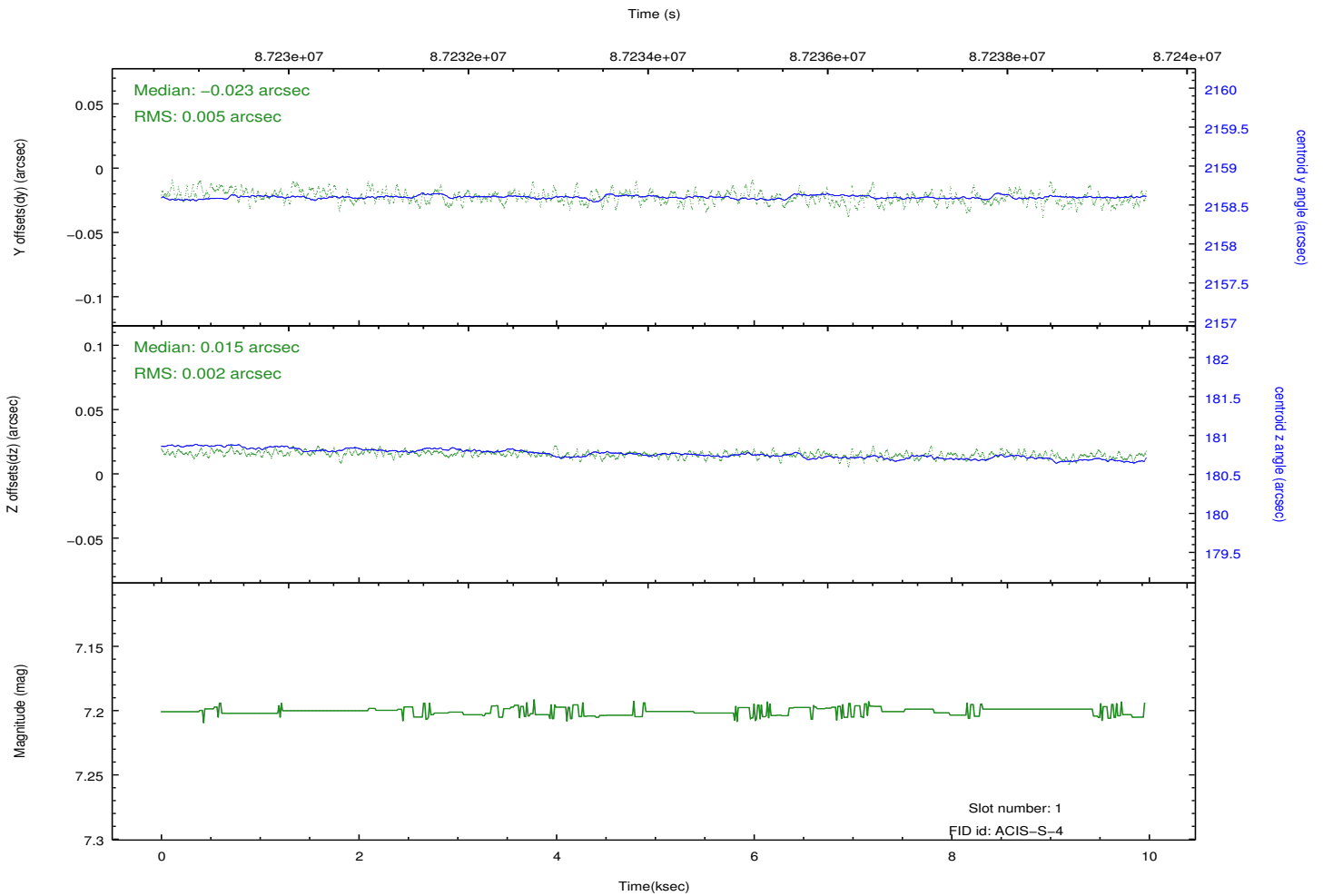
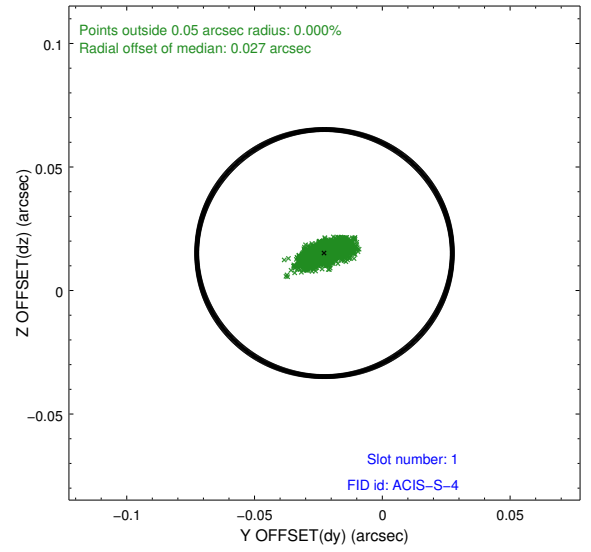
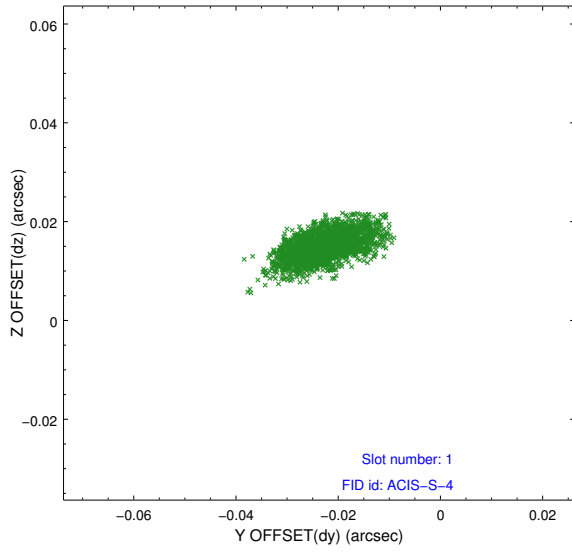


2.5 FID Slots

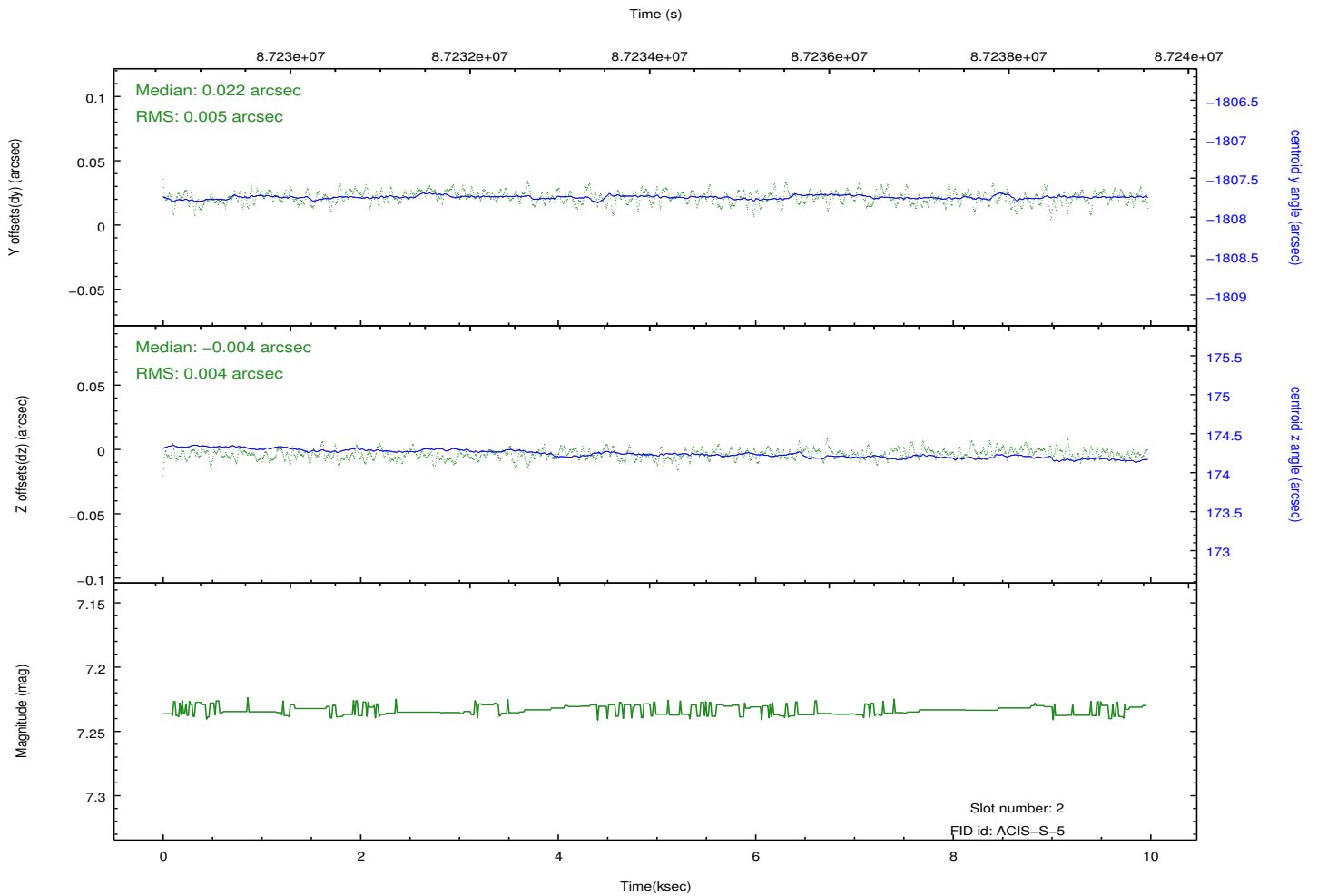
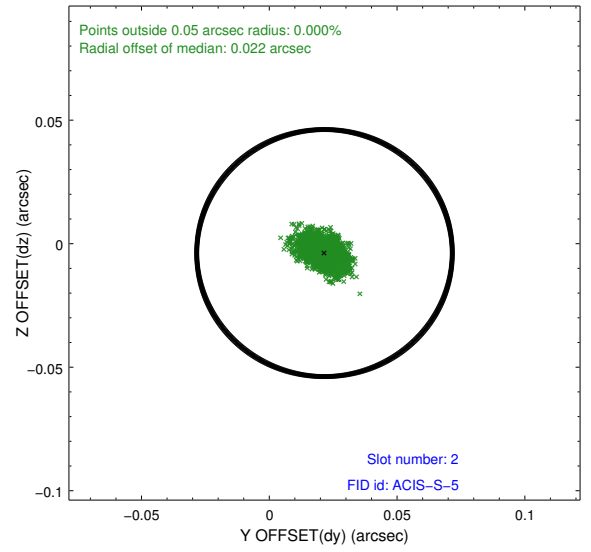
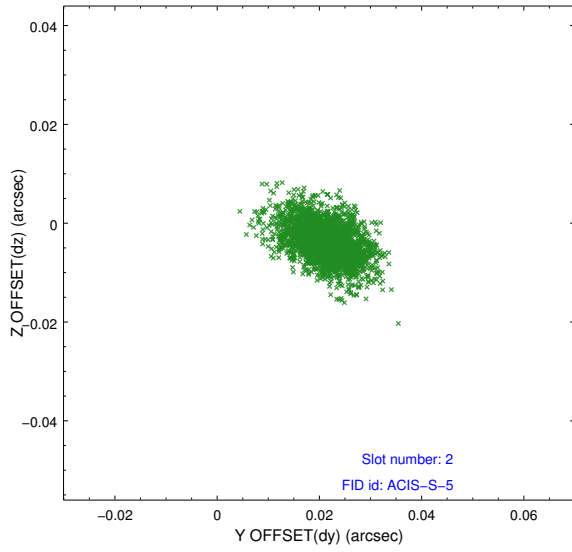
2.5.1 Slot 0



2.5.2 Slot 1



2.5.3 Slot 2



A Summary

A.1 Status

V&V Scientist	Beth Sundheim
V&V Date (YYYY-MM-DD)	2012.09.13
V&V Edition	1
V&V Disposition and Status	OK
V&V Charge Time	9.542

A.2 Comments